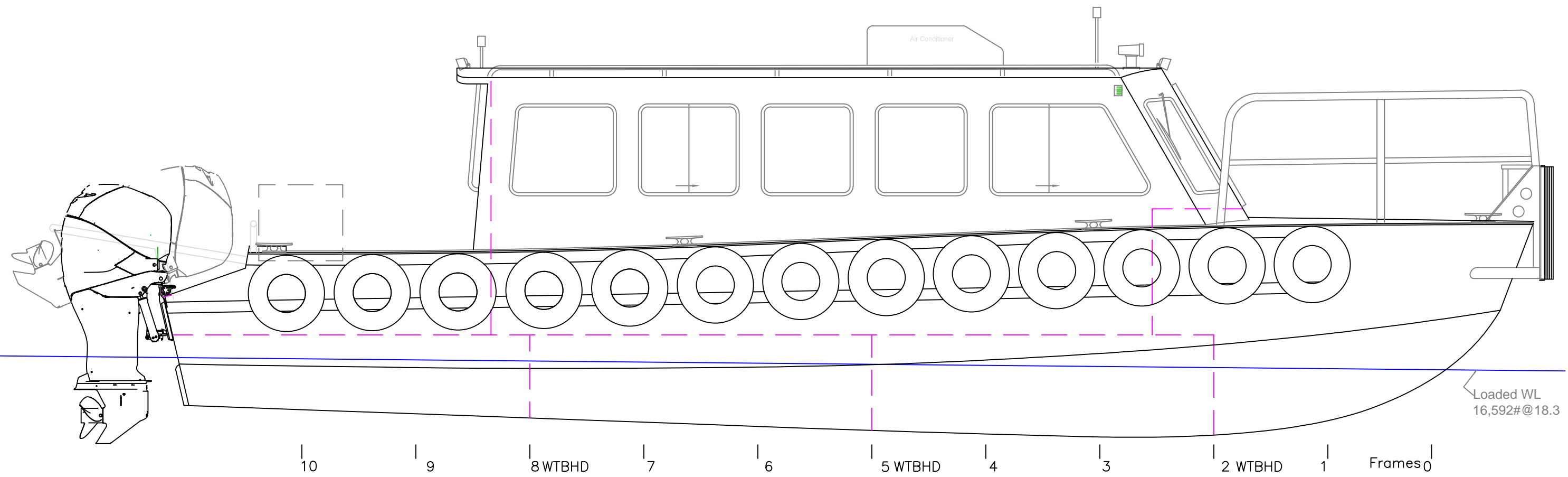


Hull LOA	36' 0" (w/o rails & fendering)
Hull Beam	12' 0" (w/o rails & fendering)

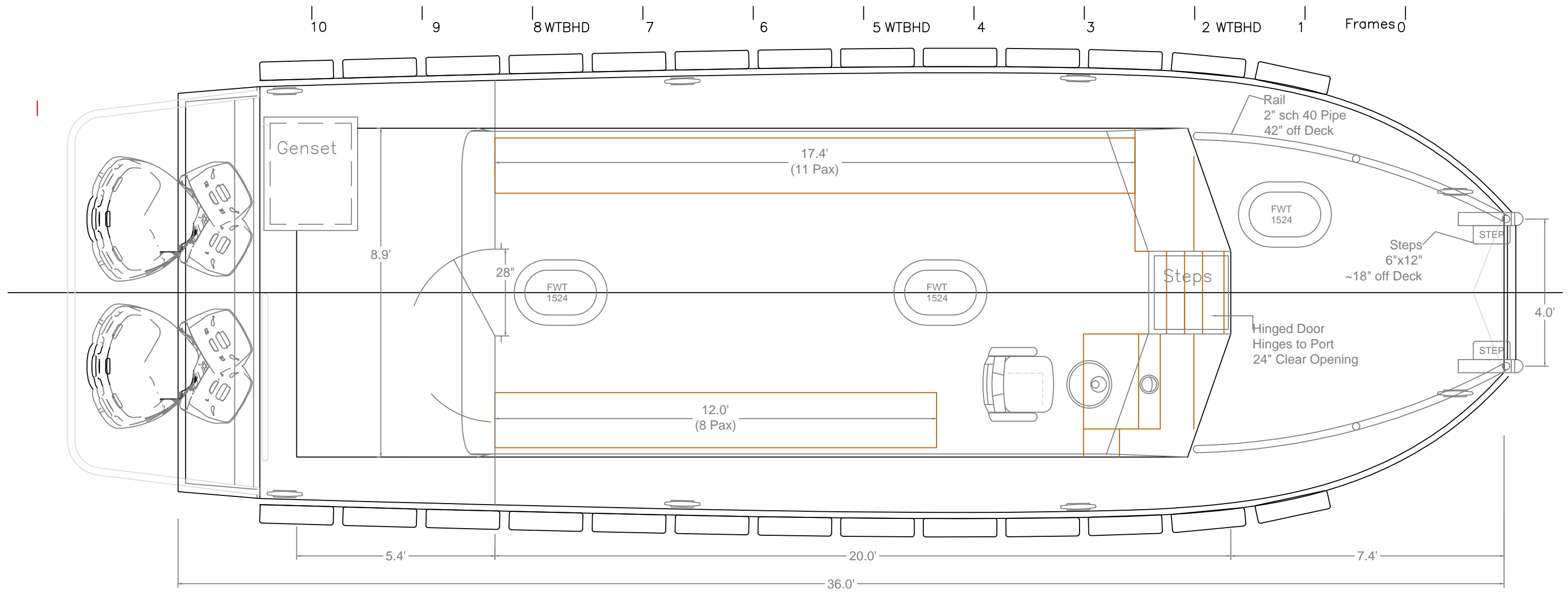


This drawing represents intellectual property of Response Marine, Inc. Reproduction of this drawing in any form, in whole or in part, including transmissions of any type, to third parties is forbidden without the prior written consent of Response Marine, Inc.

REV.	DESCRIPTION

PROFILE- 20' Cabin		
36' x 12' CREW BOAT		
VIKING WELDING/WASH GRP		
SCALE 3/8"=1'	DES/DWN WAL/JCC	DATE 6/25/15
<b>Response Marine, Inc.</b>		REV
Newburyport, MA, <a href="http://www.responsemarine.com">www.responsemarine.com</a>		DWG NO. 505-1

Hull LOA 36' 0" (w/o rails & fendering)  
 Hull Beam 12' 0" (w/o rails & fendering)



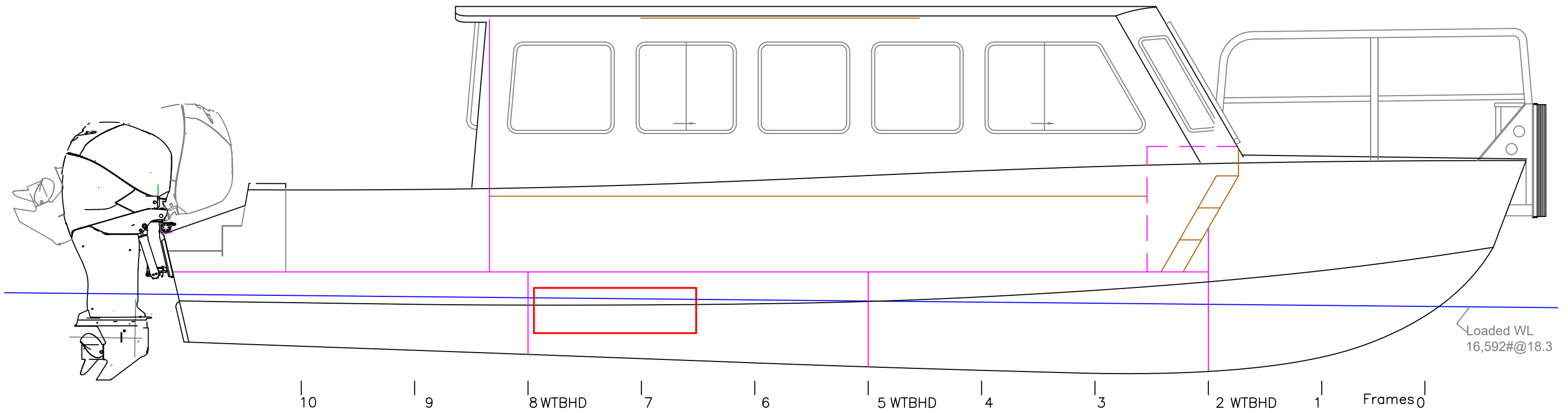
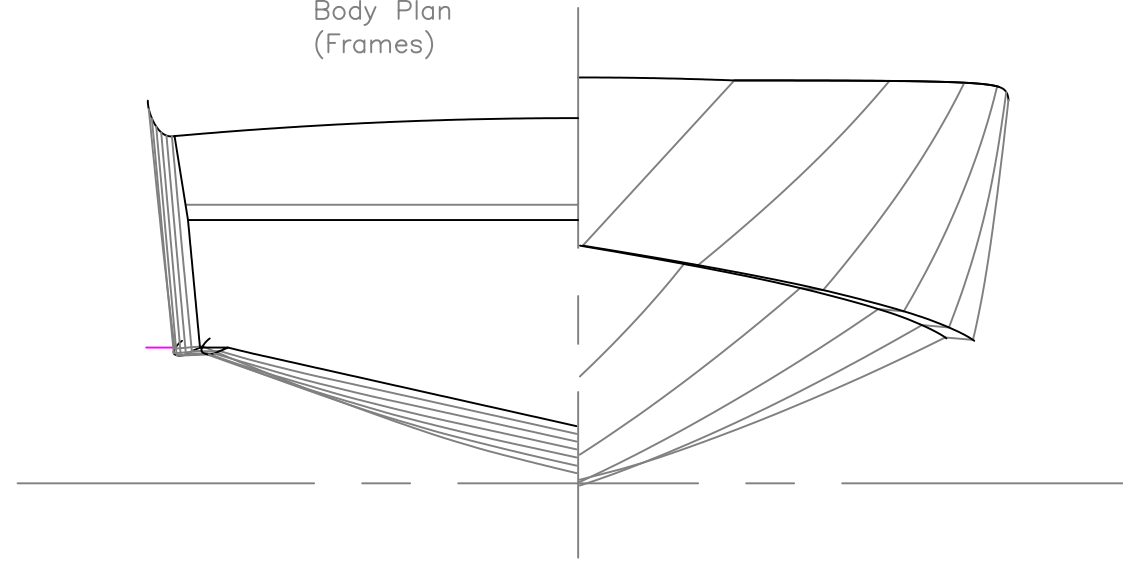
ARRANGEMENT PLAN- 20' Cabin

36' x 12' CREW BOAT		
VIKING WELDING/WASH GRP		
SCALE 3/8"=1'	DES/DWN WAL/JCC	DATE 6/25/15
Response Marine, Inc.		REV
Newburyport, MA, www.responsemarine.com		DWG NO. 505-2

This drawing represents intellectual property of Response Marine, Inc. Reproduction of this drawing in any form, in whole or in part, including transmissions of any type, to third parties is forbidden without the prior written consent of Response Marine, Inc.

REV.	DESCRIPTION

Body Plan  
(Frames)



Loaded WL  
16,592#@18.3

10 | 9 | 8 WT BHD | 7 | 6 | 5 WT BHD | 4 | 3 | 2 WT BHD | 1 | Frames 0

This drawing represents intellectual property of Response Marine, Inc. Reproduction of this drawing in any form, in whole or in part, including transmissions of any type, to third parties is forbidden without the prior written consent of Response Marine, Inc.

REV.	DESCRIPTION

INB'D PRO & Body Plan		
36' x 12' CREW BOAT		
VIKING WELDING/WASH GRP		
SCALE 3/8"=1'	DES/DWN WAL/JCC	DATE 6/25/15
Response Marine, Inc.		REV
Newburyport, MA, www.responsemarine.com		DWG NO. 505-3