

DRAWING LIST

<b>Design</b>	<b>Dwg</b>	<b>Description</b>	<b>Customer</b>	<b>Date</b>
		Sound 16' FB, Version for <input type="text"/>		
472	-1	Outboard Views		4/21/15
	-2	Inboard Views		4/21/15
	-3	Bottom Plate Layout		4/21/15
	-4	Side Plate Laout		4/21/15
	-5	Transom		4/21/15
	-6	Side Deck Layout		4/21/15
	-7	Parts Nesting (Eddie Hong)		4/21/15
	-8	Aft Benches		4/21/15
	-F1	Frame 1		4/21/15
	-F2	Frame 2		4/21/15
	-F3	Frame 3		4/21/15

Response Marine, Inc.  
Stock List for Sound 16' FB # 472 for

revised: 4/21/15

Print Date: 4/22/15

Quoted & Nested by Yarde.

**EXTRUSION**

<u>QTY</u>	<u>Description</u>	<u>Alloy</u>	<u>Length</u>	<u>Wt/Ft</u>	<u>lbs</u>
1	1.5x1.5x.188" Angle	6061 T6	25	0.622	16
2	2x1.25" AA Channel	6061-T6	25	1.070	54
1	4x2" AA Channel	6061-T6	25	1.740	44
2	1" sch 40 Pipe	6061-T6	20	0.58	23
1	1.5" sch 40 Pipe	6061-T6	20	0.94	19

<b>Sub Total Extrusion</b>	<b>155</b>
----------------------------	------------

**SHEET/PLATE to be NC Cut**

<u>QTY</u>	<u>Description</u>	<u>Thick</u>	<u>Width</u>	<u>Lngh</u>	<u>lbs/ft^2</u>	<u>lbs</u>
1	1/8" Sheet- 5052	0.125	48	144	1.800	86
2	3/16" Sheet- 5086 or 5083 H116, Marine	0.190	72	240	2.67	641

<b>Total Sheet/Plate</b>	<b>727</b>
--------------------------	------------

<b>Total Aluminum</b>	<b>882</b>
-----------------------	------------

Response Marine, Inc. Plaz Parts for #472, Sound 16' FB, for [redacted]  
 Note Parts are listed for Single Boat  
 File: Sound 16 FB

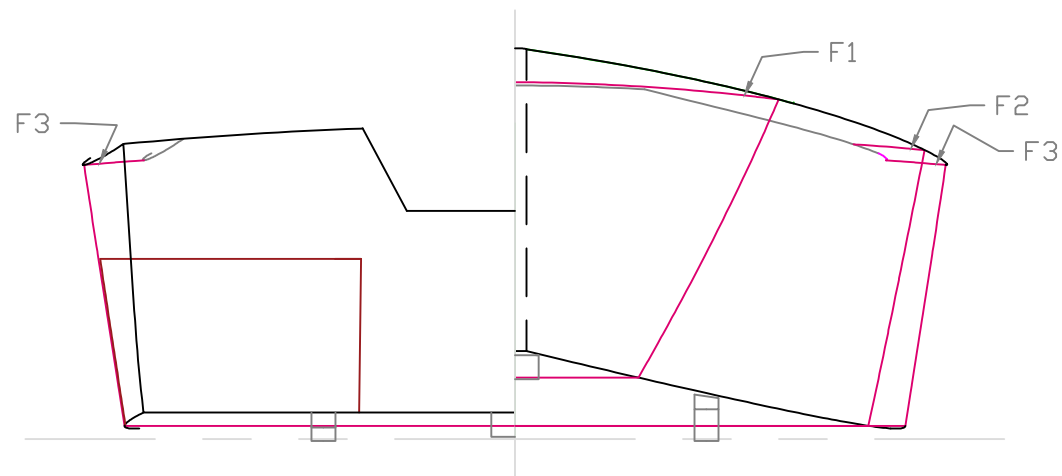
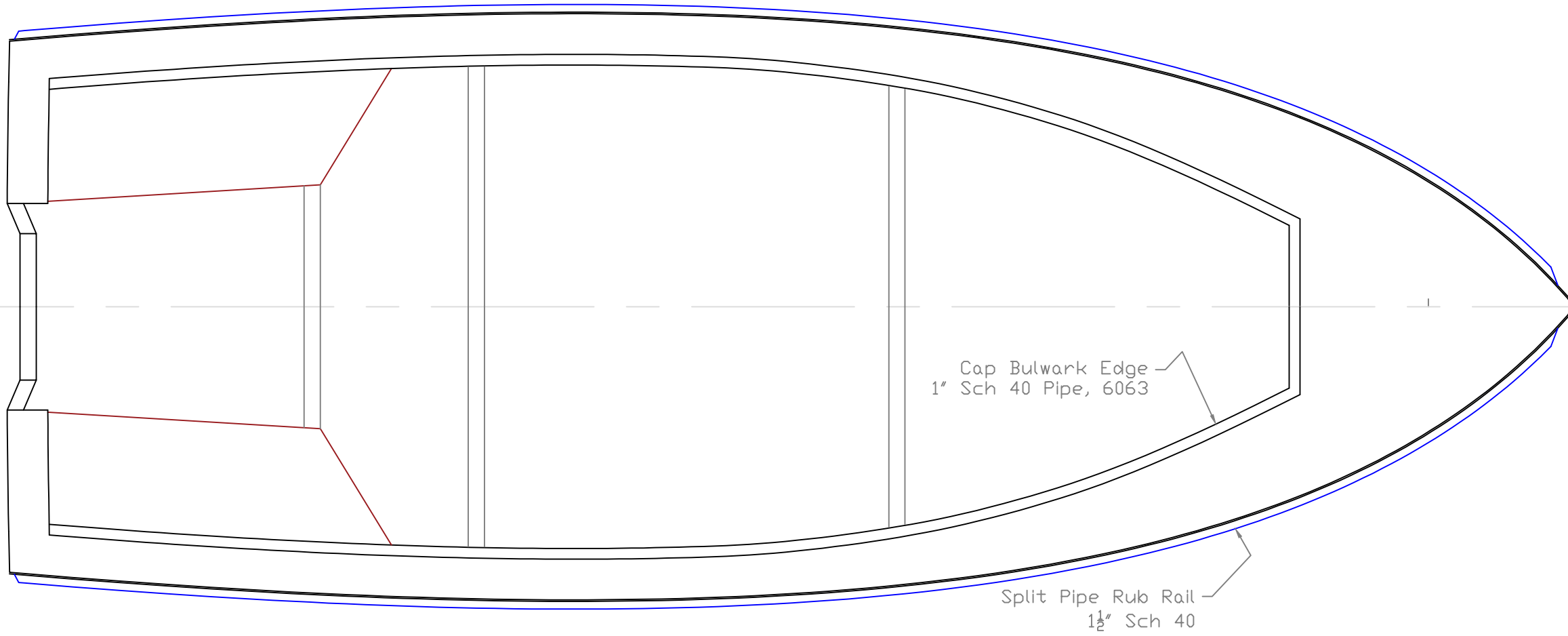
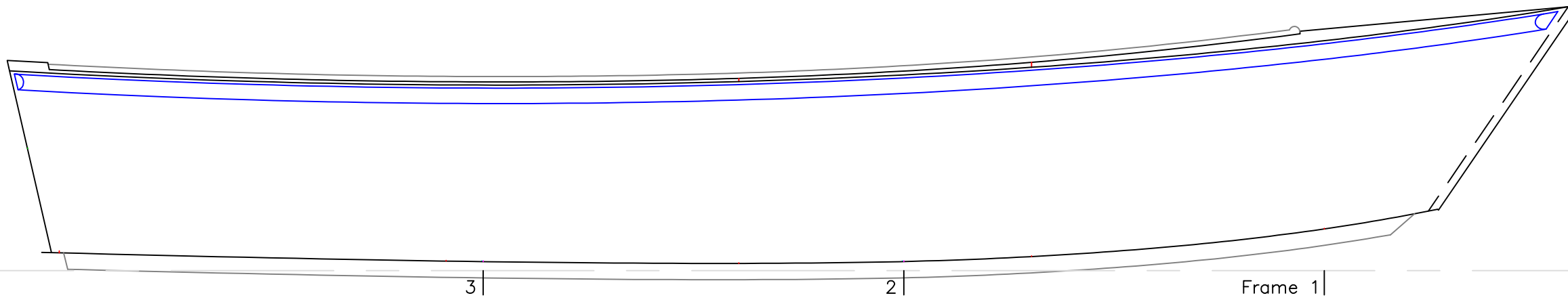
4/21/2015  
 Print Date: 4/22/2015

**3/16" Parts- 5086/5083 Marine**

<u>Part #</u>	<u>Pieces</u>	<u>Description</u>	<u>BEND</u>
B	1	Bottom	
F2-P	1	Topside Frame 2, Port	Y, 90deg Flange, 1/2" Inside Radius, 1 1/2" Back Gauge
F2-S	1	Topside Frame 2, Stbd	Y, 90deg Flange, 1/2" Inside Radius, 1 1/2" Back Gauge
F3-P	1	Topside Frame 3, Port	Y, 90deg Flange, 1/2" Inside Radius, 1 1/2" Back Gauge
F3-S	1	Topside Frame 3, Stbd	Y, 90deg Flange, 1/2" Inside Radius, 1 1/2" Back Gauge
FD	1	Foredeck	
SD-AP	1	Side Deck Fwd, Port	
SD-AS	1	Side Deck Fwd, Stbd	
SD-BP	1	Side Deck Aft, Port	
SD-BS	1	Side Deck Aft, Stbd	
TDC-P	1	Transom Deck Coaming, Port	
TDC-S	1	Transom Deck Coaming, Stbd	
TDCV-P	1	Transom Deck Coaming, Vertical, Port	
TDCV-S	1	Transom Deck Coaming, Vertical, Stbd	
TD-P	1	Transom Deck, Port	
TD-S	1	Transom Deck, Stbd	
TK	1	Transom Knee, on CL	Y, 90deg Flange, 1/2" Inside Radius, 1 1/2" Back Gauge
TKD	1	Transom Knee, doubler at bottom	
TR	1	Transom (actually no label on this part)	
TS-P	1	Topsides Port	
TS-S	1	Topsides Stbd	
	21	Sub Total	

**1/8" Parts- 5052**

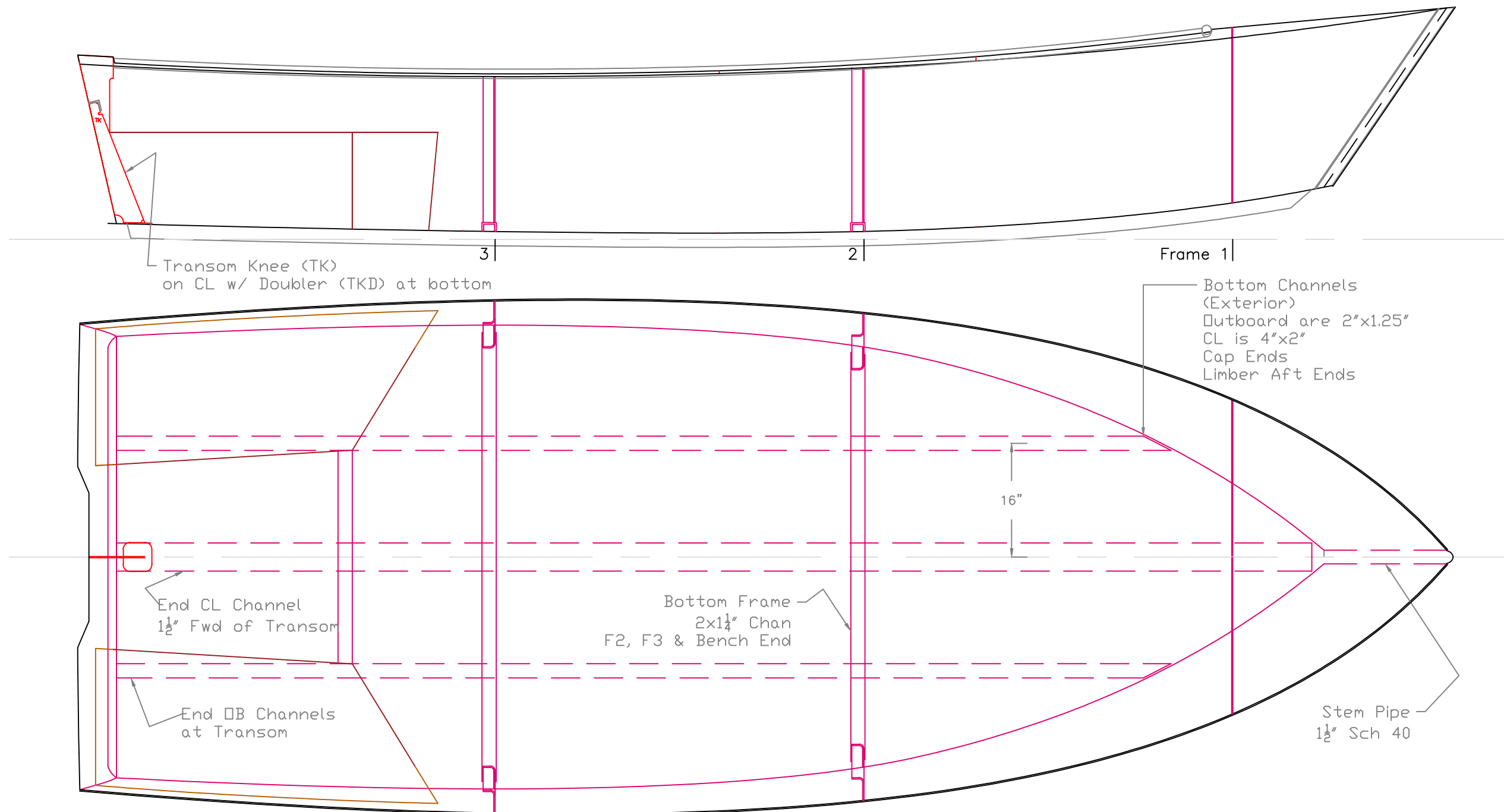
<u>Part #</u>	<u>Pieces</u>	<u>Description</u>	<u>BEND</u>
B-P1	1	Bench Port- Body	Y, 90 deg as marked, tight radius
B-P2	1	Bench Port- Front	
B-S1	1	Bench Stbd- Body	Y, 90 deg as marked, tight radius
B-S2	1	Bench Stbd- Front	
F1	1	Frame 1	
	5	Sub Total	
	26	TOTAL PARTS	



OUTBOARD VIEWS  
16'x6' FB SKIFF

For: Sound Marine		
SCALE 3/4"=1'	DES/DWN WAL	DATE 4/21/15
<b>Response Marine, Inc.</b> Newburyport, MA, www.responsemarine.com		REV DWG NO. 472-1

REV.	DESCRIPTION



INBOARD VIEWS

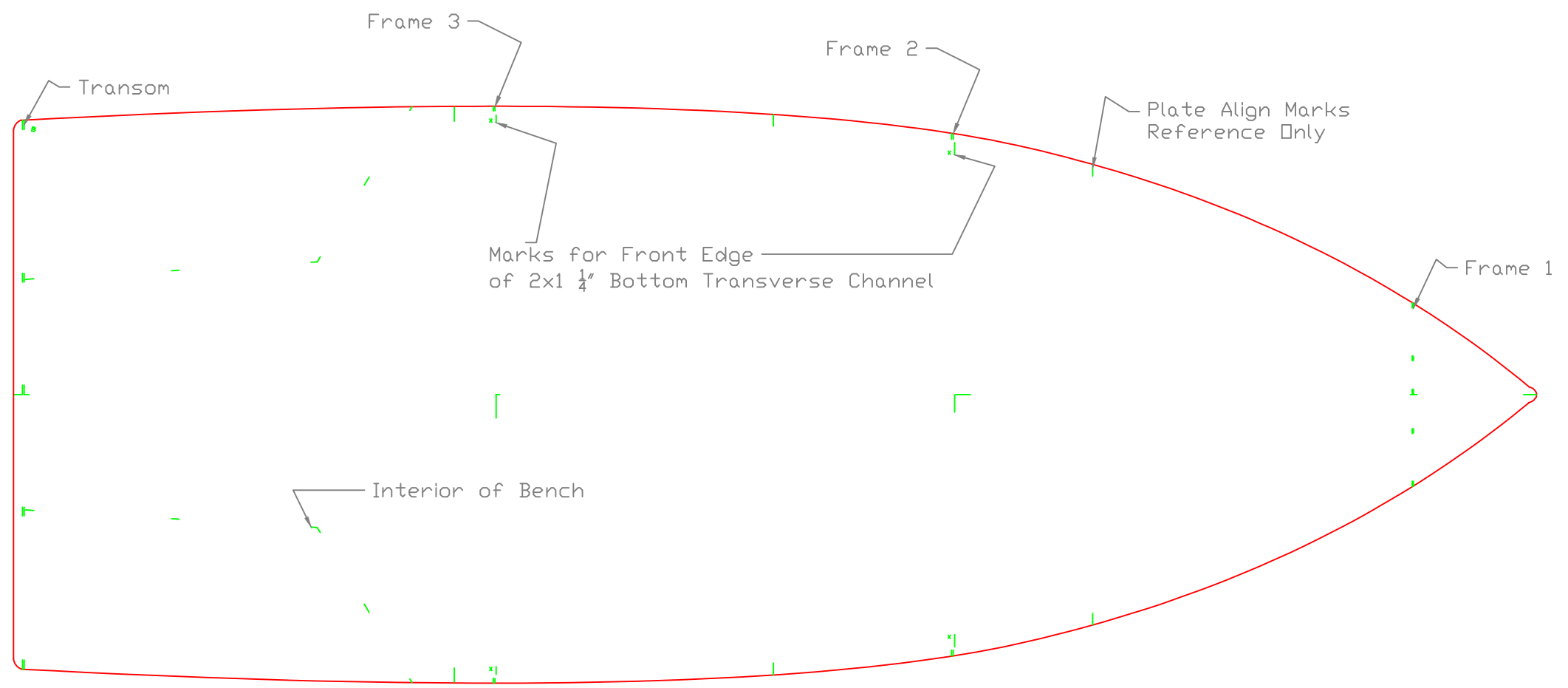
16'x6' FB SKIFF

For: Sound Marine

SCALE 3/4"=1'	DES/DWN WAL	DATE 4/21/15
------------------	----------------	-----------------

<b>Response Marine, Inc.</b> Newburyport, MA, www.responsemarine.com	REV 472-2
---	--------------

REV.	DESCRIPTION



BOTTOM PLATE LAYOUT

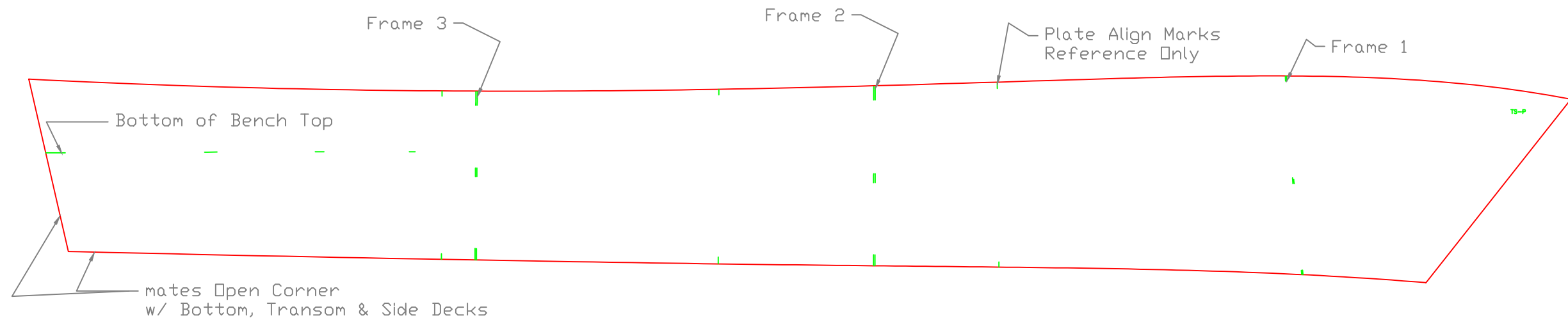
16'x6' FB SKIFF

For: Sound Marine

SCALE 3/4"=1'	DES/DWN WAL	DATE 4/21/15
------------------	----------------	-----------------

<b>Response Marine, Inc.</b>		REV
Newburyport, MA, <a href="http://www.responsemarine.com">www.responsemarine.com</a>		DWG NO. 472-3

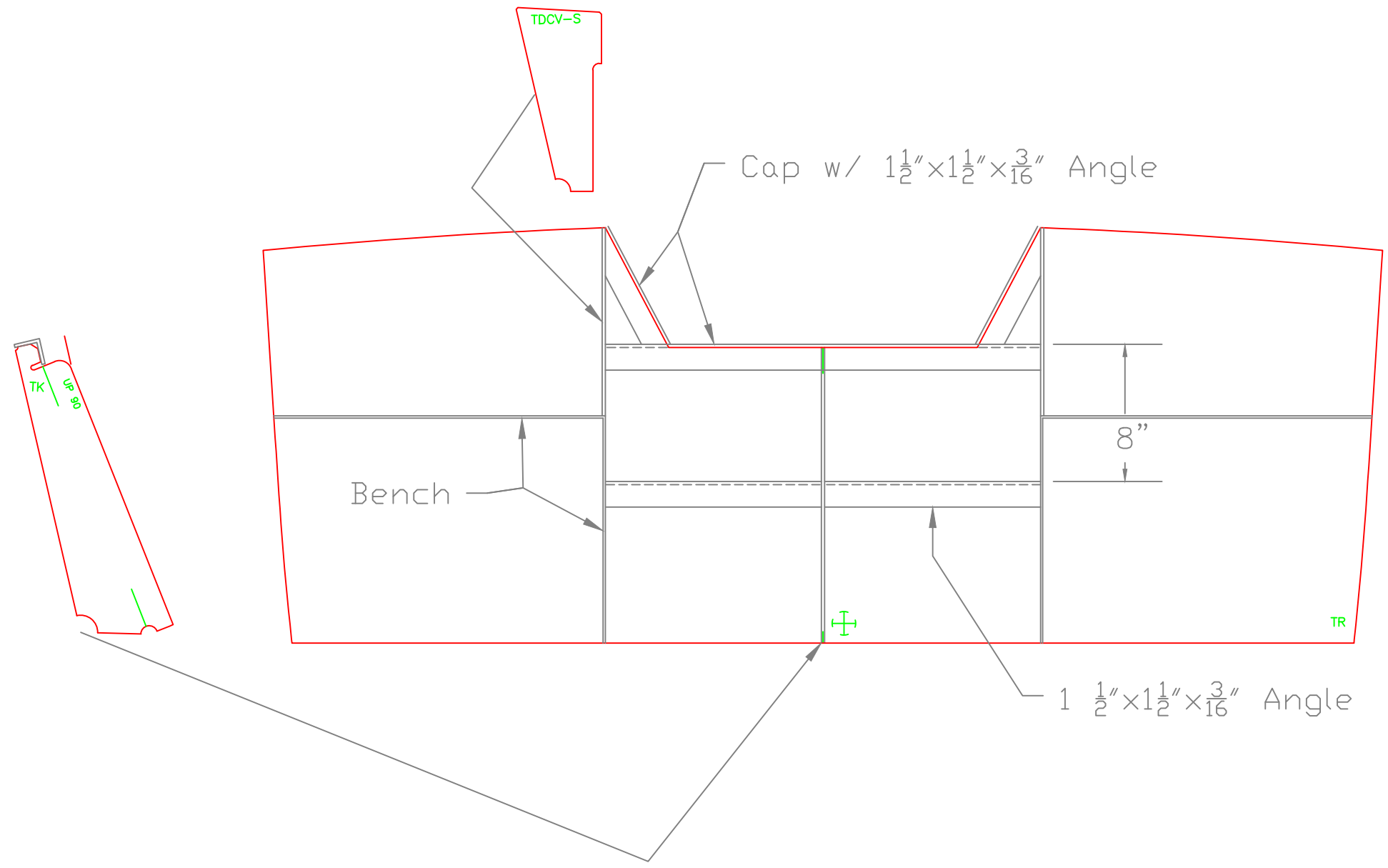
REV.	DESCRIPTION



SIDE PLATE LAYOUT

16'x6' FB SKIFF		
For: Sound Marine		
SCALE 3/4"=1'	DES/DWN WAL	DATE 4/21/15
<b>Response Marine, Inc.</b> Newburyport, MA, www.responsemarine.com		REV DWG NO. 472-4

REV.	DESCRIPTION

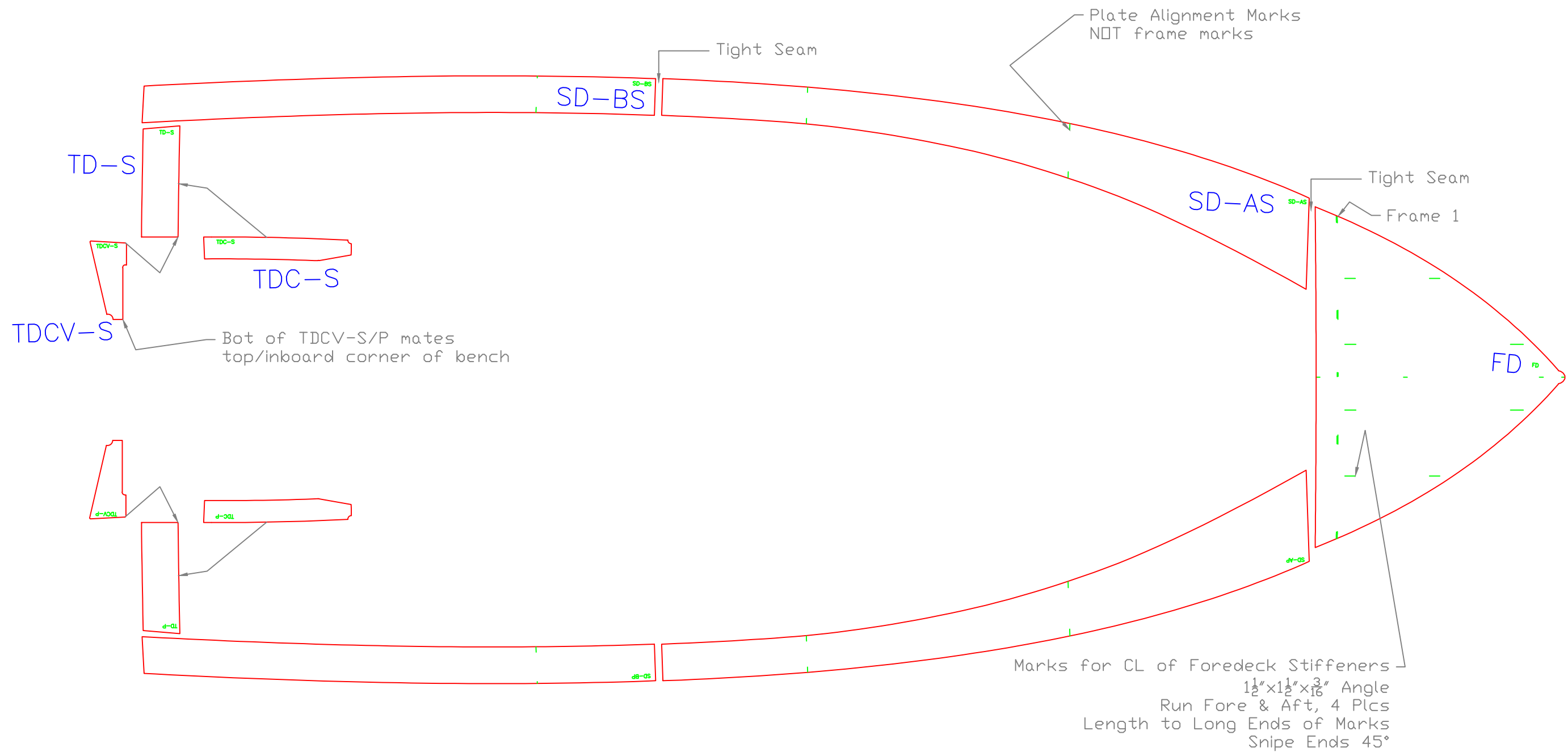


TRANSOM

16'x6' FB SKIFF		
For: Sound Marine		
SCALE 1 1/2"=1'	DES/DWN WAL	DATE 4/21/15
<b>Response Marine, Inc.</b> Newburyport, MA, www.responsemarine.com		REV DWG NO. 472-5

REV.	DESCRIPTION





# SIDE DECK LAYOUT

16'x6' FB SKIFF		
For: Sound Marine		
SCALE NONE	DES/DWN WAL	DATE 4/21/15
<b>Response Marine, Inc.</b> Newburyport, MA, www.responsemarine.com		REV DWG NO. 472-6

REV.	DESCRIPTION

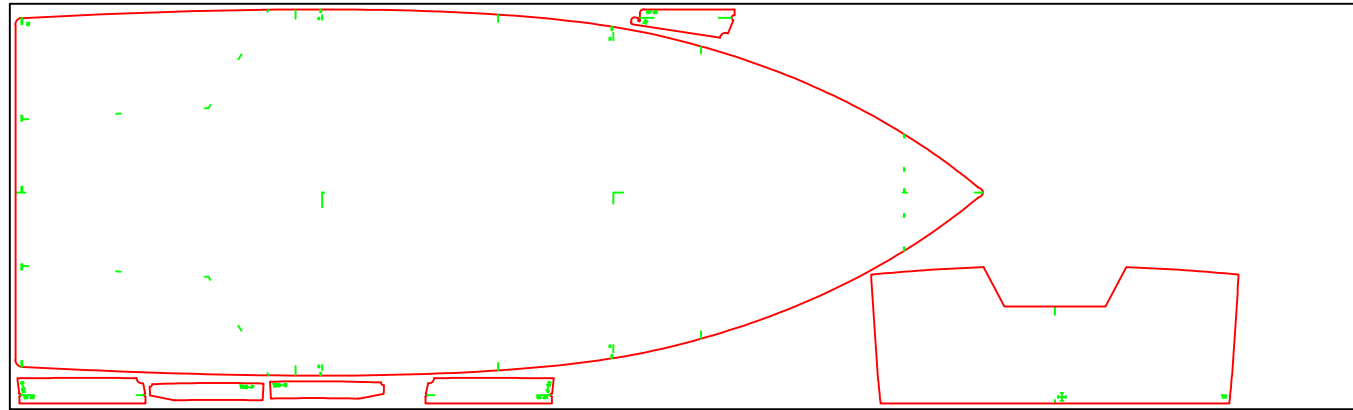
Response #472- Eddie Hong  
.190 5086 Marine, ASTM B928

Part Qty=21

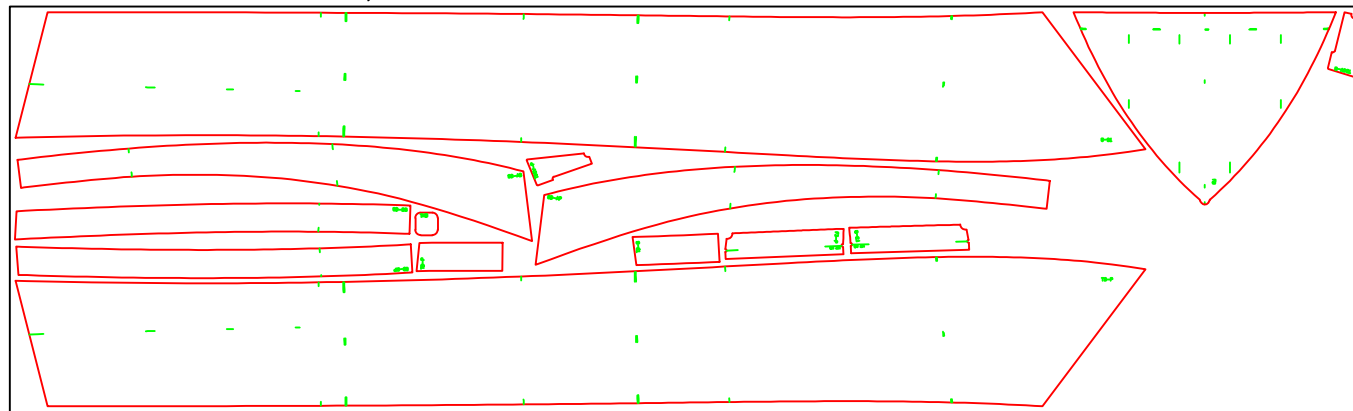
"CUT" Layer, Red= Inside & Outside Perimeters

"TXT" Layer, Green= Text & Marks

.190"x72x240, 5086 Marine



.190"x72x240, 5086 Marine



Response #472- Eddie Hong

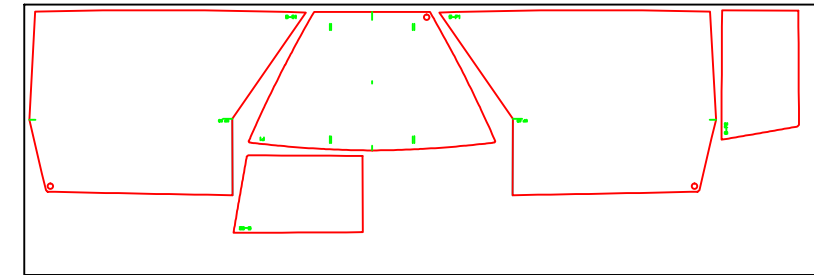
.125" 5052 H32

Part Qty=5

"CUT" Layer, Red= Inside & Outside Perimeters

"TXT" Layer, Green= Text & Marks

.125"x48x144, 5052



PARTS NESTING

16'x6' FB SKIFF

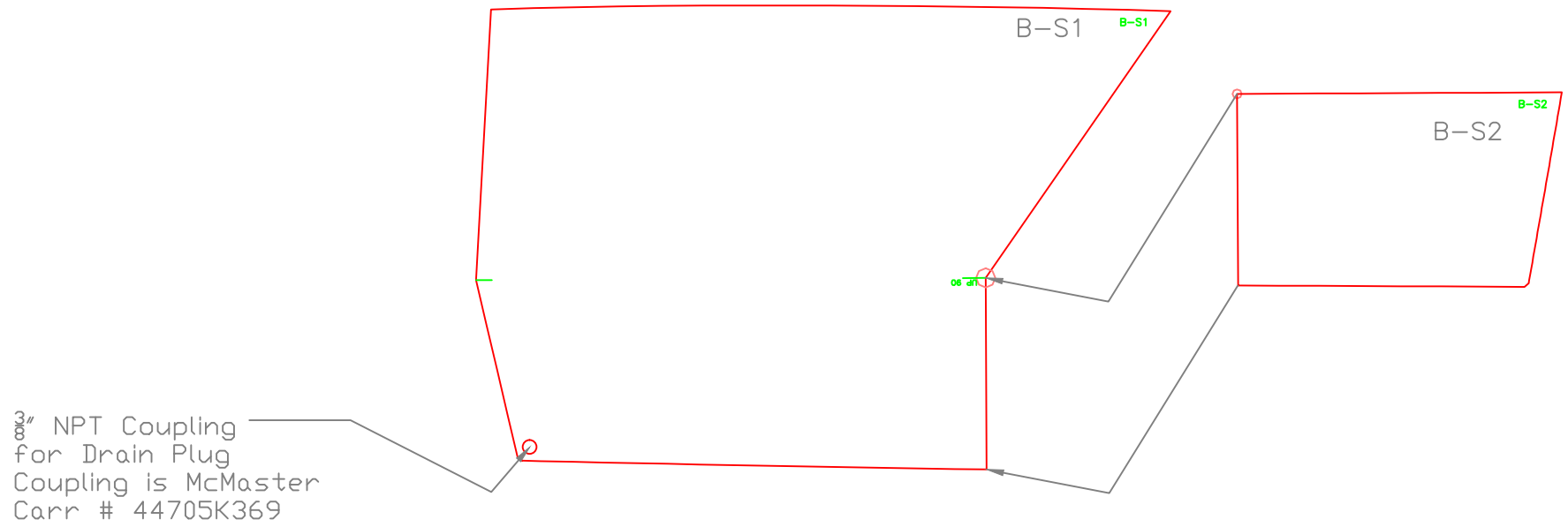
For:

SCALE	DES/DWN	DATE
NONE	WAL	4/21/15

REV
-----

<b>Response Marine, Inc.</b>	DWG NO.
Newburyport, MA, <a href="http://www.responsemarine.com">www.responsemarine.com</a>	472-7

REV.	DESCRIPTION

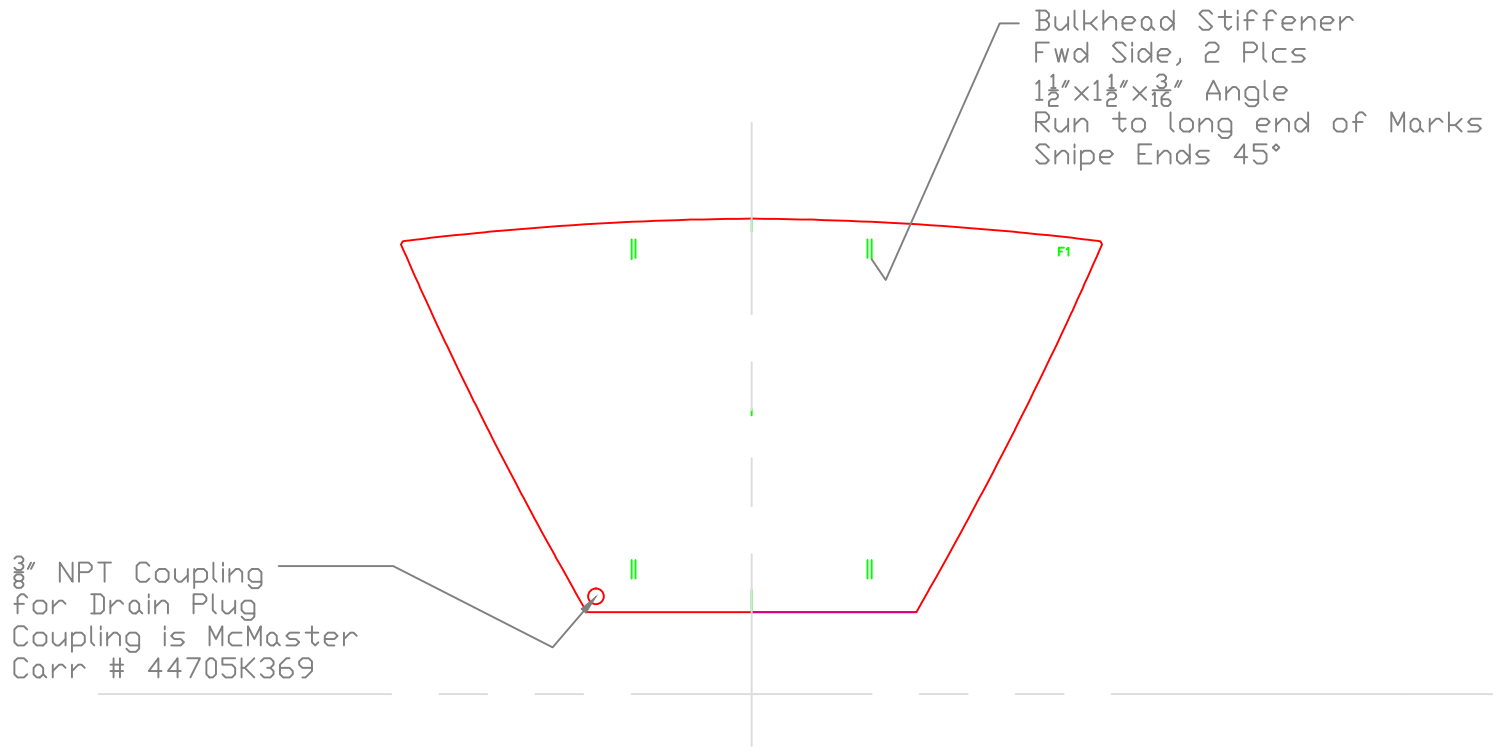


3/8" NPT Coupling  
 for Drain Plug  
 Coupling is McMaster  
 Carr # 44705K369

Stbd Bench Shown  
 Port is Mirror Image

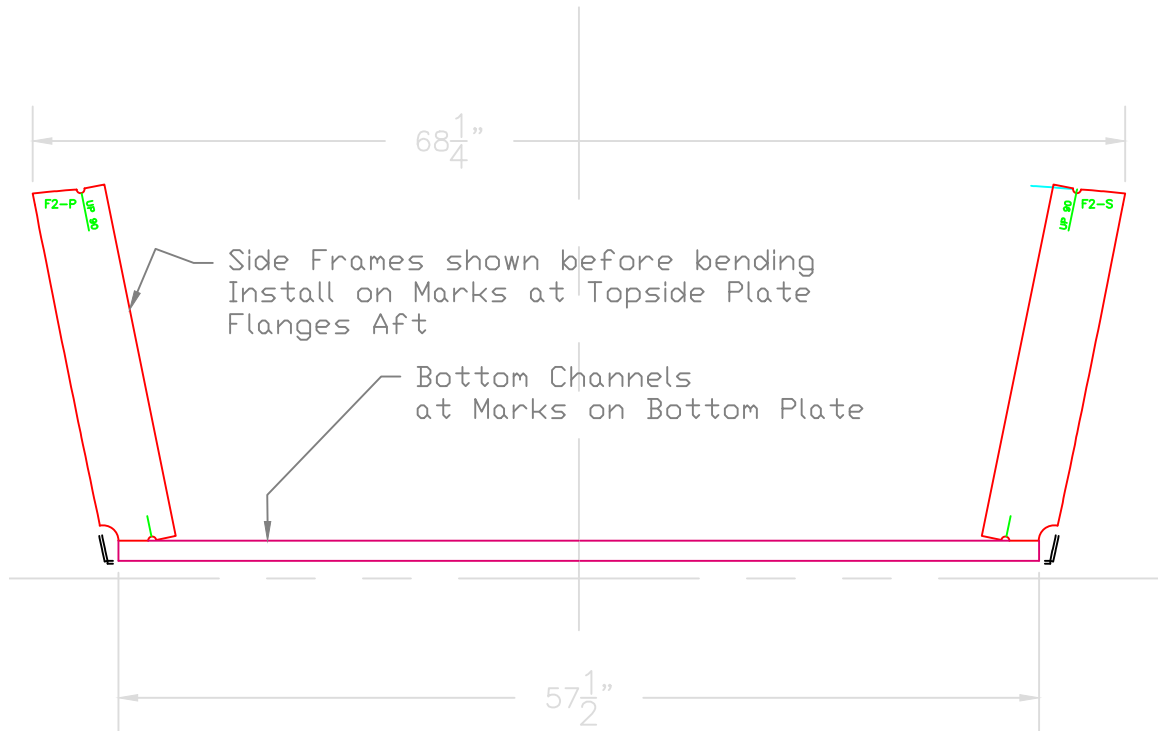
AFT BENCHES		
16'x6' FB SKIFF		
SCALE 1"=1'	DES/DWN WAL	DATE 4/21/1
<b>Response Marine, Inc.</b> Newburyport, MA, <a href="http://www.responsemarine.com">www.responsemarine.com</a>		SHEET
		DWG NO. 472-8

REV.	DESCRIPTION



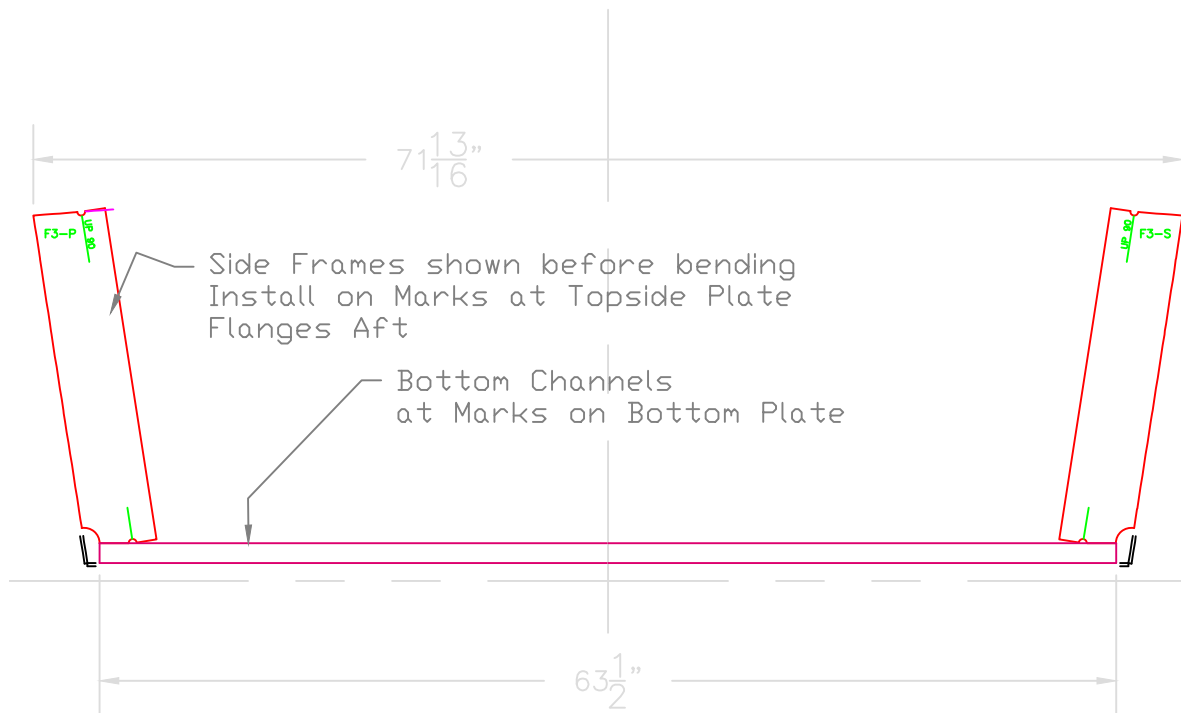
FRAME 1		
16'x6' FB SKIFF		
SCALE 1"=1'	DES/DWN WAL	DATE 4/21/1
<b>Response Marine, Inc.</b> Newburyport, MA, <a href="http://www.responsemarine.com">www.responsemarine.com</a>		SHEET
		DWG NO. 472-F1

REV.	DESCRIPTION



FRAME 2		
16'x6' FB SKIFF		
SCALE 1"=1'	DES/DWN WAL	DATE 4/21/1
<b>Response Marine, Inc.</b> Newburyport, MA, <a href="http://www.responsemarine.com">www.responsemarine.com</a>		SHEET
		DWG NO. 472-F1

REV.	DESCRIPTION



FRAME 3		
16'x6' FB SKIFF		
SCALE 1"=1'	DES/DWN WAL	DATE 4/21/1
<b>Response Marine, Inc.</b> Newburyport, MA, <a href="http://www.responsemarine.com">www.responsemarine.com</a>		SHEET
		DWG NO. 472-F1

REV.	DESCRIPTION