

OUTBOARD VIEWS

34'x12' Landing Craft- Flat Bottom

For: Chester Marina

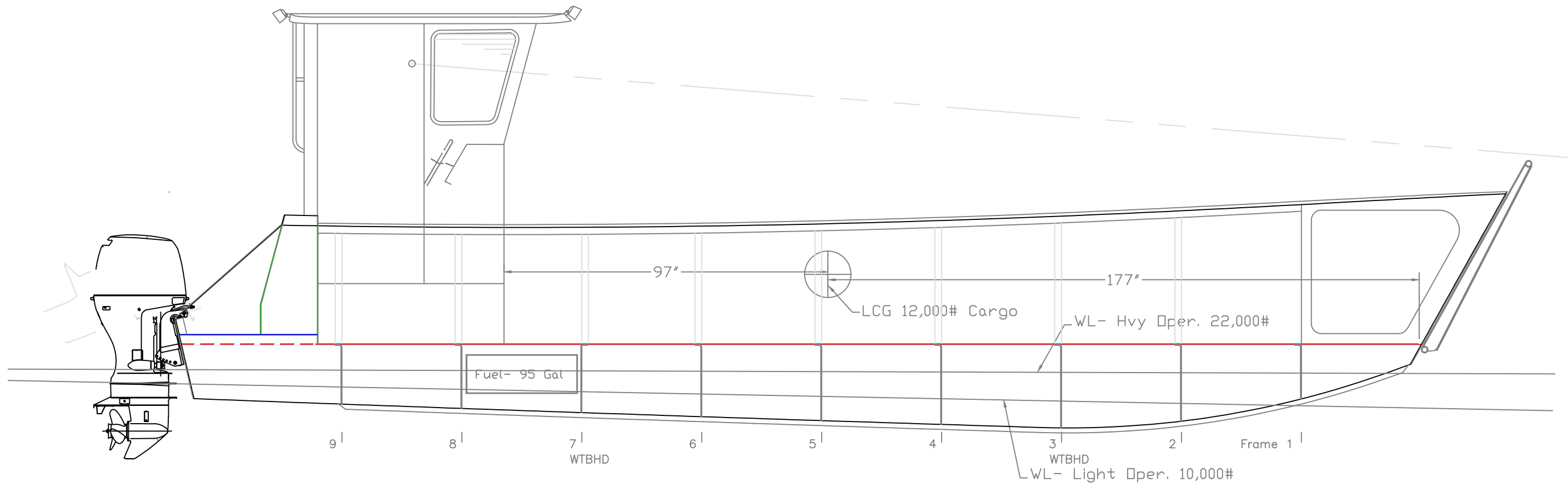
SCALE 3/8" = 1'	DES/DWN WAL	DATE 7/28/07
--------------------	----------------	-----------------

SHEET	
-------	--

DWG NO. 289-01	
-------------------	--

REV.	DESCRIPTION

**Response Marine, Inc.**  
Newburyport, MA, www.responsemarine.com



INBOARD VIEWS

34'x12' Landing Craft- Flat Bottom

For: Chester Marina

SCALE 3/8" = 1'	DES/DWN WAL	DATE 7/28/07
--------------------	----------------	-----------------

SHEET	
DWG NO. 289-02	

REV.	DESCRIPTION

**Response Marine, Inc.**  
Newburyport, MA www.responsemarine.com