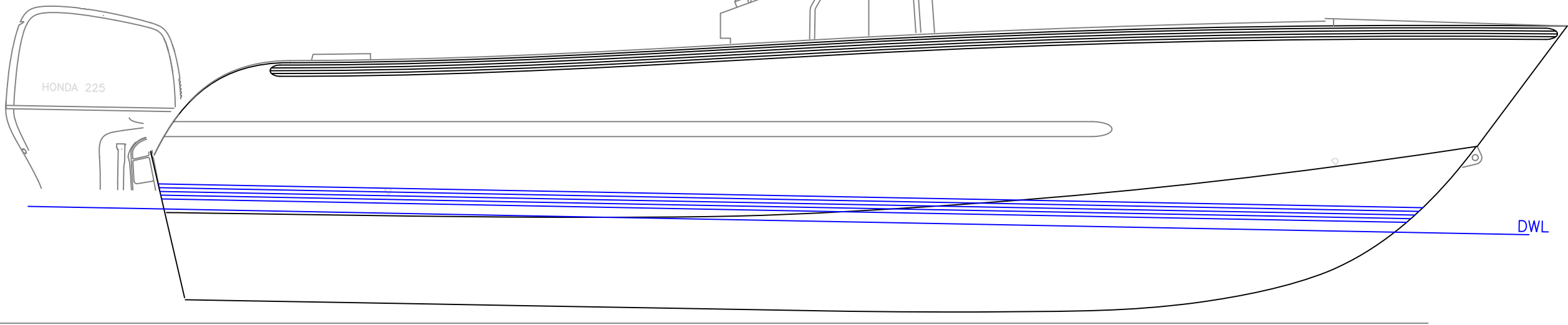
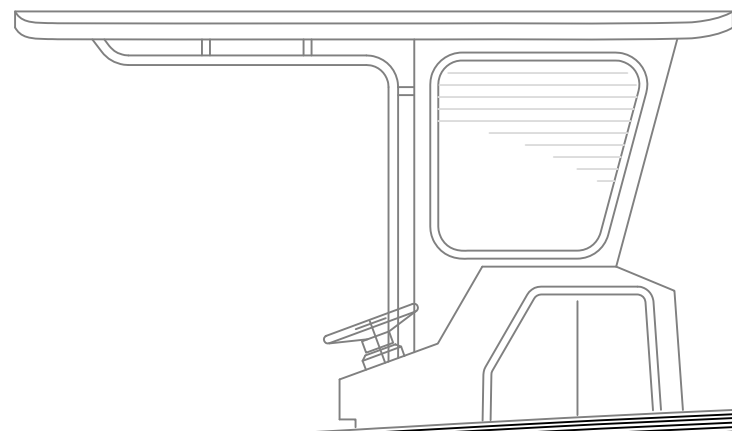


PARTICULARS~	
Hull LOA;	23' 9"
Hull Beam;	8' 3½"
Draft;	1' 7"
Displacement;	5,250 lbs. (Normal Operating)



OUTBOARD PLAN & PROFILE

Rock Salt 24

for: Sound Marine

SCALE 1/2" = 1'	DES/DWN WAL/JCC	DATE 4/28/14
--------------------	--------------------	-----------------

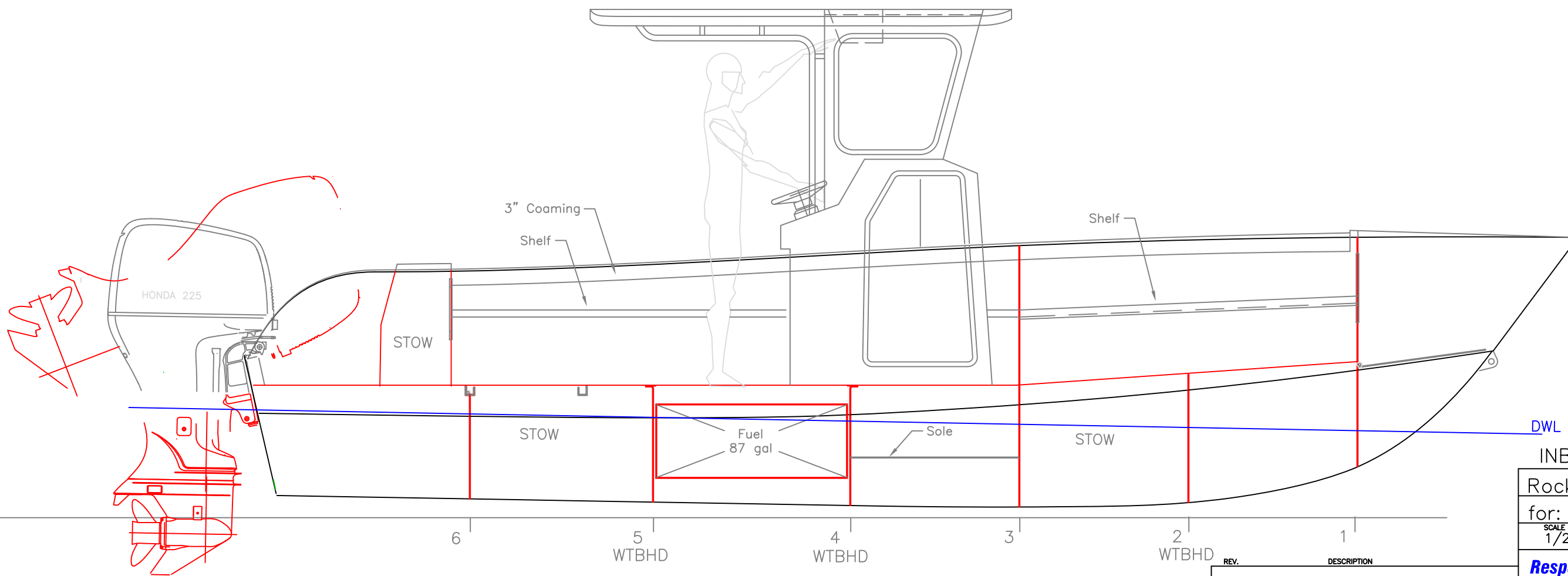
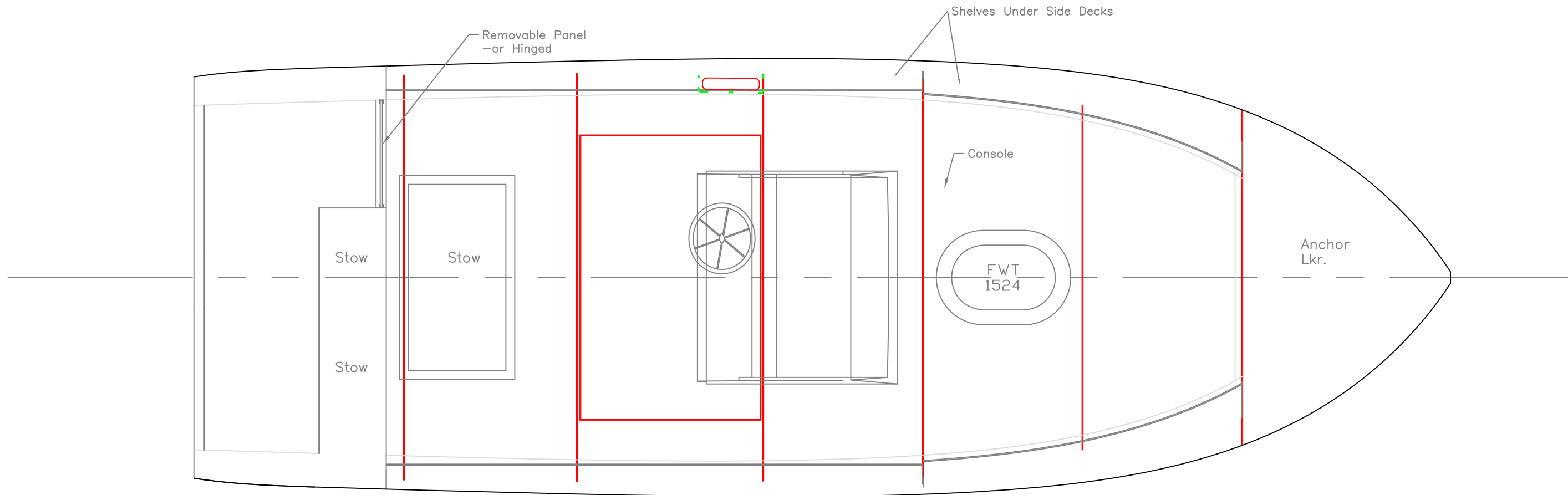
Response Marine, Inc.

Newburyport, MA, www.responsemarine.com

DWG. NO.
473-1

REV. DESCRIPTION

--	--



DWL

INBOARD PLAN & PROFILE

Rock Salt 24

for: Sound Marine

SCALE 1/2" = 1' DES/DWN WAL/JCC DATE 4/28/14

SHEET

Response Marine, Inc. DWG NO. 473-2
Newburyport, MA, www.responsemarine.com

REV. DESCRIPTION

DRAWING LIST

Design	Dwg	Description	Customer	Date
RockSalt 24-		Sound Marine		
473	-1	Outboard Plan & Profile		4/28/14
	-2	Inboard Plan & Profile		4/28/14
	2-1	Keel Layout		4/28/14
	2-2	Hull Structural Plan & Profile		4/28/14
	2-3	Cockpit Sole Structure		4/28/14
	2-4	Transom		4/28/14
	2-5	Step Chine Plan/Pro		4/28/14
	2-5	Step Chine Offsets		4/28/14
	3-1	Fuel Tank		4/15/14
	4-1	Console Parts		4/30/14
	B-1	Flange Bending		4/28/14
	F-R	Frame Dimensions		4/28/14
	F-1	Frame 1		4/28/14
	F-2	Frame 2		4/28/14
	F-3	Frame 3		4/28/14
	F-4	Frame		4/28/14
	F-5	Frame 5		4/28/14
	F-6	Frame 6		4/28/14
	F-7	Transom Bhd		4/28/14
	F-8	False Transom		4/28/14

Response Marine, Inc.
 Stock List for RockSalt 24
 File:BlackLab\RockSalt 24-Sound
 revised: 4/30/14

Print Date: 4/30/14

EXTRUSION

Use	QTY	Description	Alloy	Dims	Thick	Length	Wt/Ft	Wt
hatch gutters	2	Channel, A.A.	6063	2x2	0.25	16	1.634	52
Rub Rail- DB503	1	Channel, A.A.	6063	.75x1	0.125	16	0.350	6
tran door track	1	Channel, A.A.	6061 T6	2x1	0.125	25	0.580	15
bhd stiffs	1	Angle, Am. Std.	6061 T6	1.5x1.5	0.188	25	0.622	16
Deck stiffs, misc	2	Angle, Am. Std.	6061 T6	1.5x1.5	0.25	25	0.809	40
Step Chine	2	Angle, Am. Std.	6061 T6	2.5x2	0.188	25	0.961	48
Deck CL	1	Angle, Am. Std.	6061 T6	3x2	0.25	25	1.400	35
Construction Jig/Fair	8	Tee, Am. Std.	6061 T6	1.5x1.5	0.25	25	0.870	174
Frame Flanges	2	Flat Bar	6061 T6	1.5	0.188	12	0.451	11
Fwd Shelf Coam	2	Flat Bar	6061 T6	2	0.25	12	0.590	14
	1	Square Tube	6061 T6	1.5	0.125	24	0.810	19
conduits, collars	1	Pipe, sch 40	6061 T6	2.5		20	2.000	40
Sub Total Extrusic								470

SHEET/PLATE

Need also blank stock for deck body- (1) 72x144, (1) 36x96
 As Nested by Yarde~4/18/14

QTY	Description	Thick	Width	Lngh	lbs/ft^2	lbs
1	1/8" Sheet- 5052 H32	0.125	60	144	1.800	108
1	1/8" Sheet- 5052 H32	0.125	60	96	1.800	72
1	1/8" Sheet- 5052 H32	0.125	60	120	1.800	90
4	3/16" Sheet- 5052 H32	0.190	72	144	2.67	769
2	3/16" Sheet- 5086 H32	0.190	96	288	2.67	1,025
1	1/4" Plate 5086 H116-117	0.250	96	288	3.456	664
1	1/4" Plate 5086 H116-117	0.250	96	202	3.456	465
1	3/8" Plate 5086 H116-117	0.375	72	144	5.184	373

Total Sheet/Plate 3,296

Total Aluminum 3,766

Response Marine Plaz Parts for Rock Salt 24

File: RMIdes\BlackLab\RS24-SOUND

Revised: 4/17/14

Print Date: 4/30/14

1/8" 5052 Parts

<u>Part #</u>	<u>Pieces</u>	<u>Description</u>	<u>Bending</u>	<u>Bending Info</u>
C-B	1	Console Body	Y	On Marks
J-CR	2	Jig, Console Roof		
C-EB	1	Console Elect Box	Y	On Marks
C-A	1	Console Aft Panel	Y	On Marks
C-T	1	Console Top Face	Y	On Marks
C-WS	1	Console Windshield	Y	On Marks
	7	Total Pieces (1/8")		

3/16" 5052 Parts

<u>Part #</u>	<u>Pieces</u>	<u>Description</u>	<u>Bending</u>	<u>Bending Info</u>
C-R	1	Console Roofe	Y	as marked
C-VA	1	Console Visor Fwd		
C-VB	1	Console Visor Aft		
DB-A	1	Sole Body, Fwd, F1-F2		
DB-B	1	Sole Body, Fwd Mid, F2-F3		
FD-C	1	Foredeck Coaming		
FD-J	1	Foredeck Jig		
FD-P	1	Foredeck, Port		
FD-S	1	Foredeck, Stbd		
FT-B	2	Fuel Tank Baffle	Y	B-1 Flange
FT-BT	1	Fuel Tank Baffle	Y	B-1 Flange
FT-E	2	Fuel Tank Ends		
FT-S	1	Fuel Tank Skin	Y	On Marks
FT-T	1	Fuel Tank Top		
SD-P	1	Side Deck, Port		
SD-S	1	Side Deck, Stbd		
ST-P	1	Scupper Tube, Port	Y	On Marks
ST-S	1	Scupper Tube, Stbd	Y	On Marks
TD	1	Transom Deck		
TDS	1	Transom Door Side		
TLB	1	Transom Lkr. Bhd	Y	B-1 Flange
WS-P	1	Wing Side, Inner, Port		
WS-S	1	Wing Side, Inner, Stbd		
WT-P	1	Wing Top, Port		
WT-S	1	Wing Top, Stbd		
	27	Total Pieces (3/16")		

3/16" 5083/86 Parts

<u>Part #</u>	<u>Pieces</u>	<u>Description</u>	<u>Bending</u>	<u>Bending Info</u>
ALB	1	Anchor Locker Bottom		
DM-AP	1	Sole Margin, Port F3-Tran		
DM-AS	1	Sole Margin, Stbd F3-Tran		
F1	1	Frame 1		
F2	1	Frame 2	Y	B-1 Back Gauge, UP 86 Degrees
F3	1	Frame 3, Main Lower	Y	B-1 Flange
F3-P	1	Frame 3, Upper, Port	Y	B-1 Flange
F3-S	1	Frame 3, Upper, Stbd	Y	B-1 Flange
F4	1	Frame 4	Y	B-1 Flange
F4-P1	1	Frame 4, Upper, Port, Fuel Trunk	Y	On Marks
F4-P2	1	Frame 4, Fuel Trunk Cover Plate		
F5	1	Frame 5	Y	B-1 Flange
F6	1	Frame 6		
FTR	1	False Transom	Y	On Marks
S	1	Stem Cap		
SDC-P	1	Side Deck Coaming, Port		
SDC-S	1	Side Deck Coaming, Stbd		
TB-P	1	Transom Bhd, Port Side		
TB-S	1	Transom Bhd, Stbd Side		
TB-B	1	Transom Bhd, Center/Body		
TS-AP	1	Topsides, Fwd, Port		
TS-AS	1	Topsides, Fwd, Stbd		
TS-BP	1	Topsides, Aft, Port		
TS-BS	1	Topsides, Aft, Stbd		
	24	Total Pieces (3/16")		

1/4" 5083/86 Parts

<u>Part #</u>	<u>Pieces</u>	<u>Description</u>
B-P	1	Bottom Plate, Port
B-S	1	Bottom Plate, Stbd
BS-1AP	1	Bottom Longitudinal 1, Fwd, Port
BS-1AS	1	Bottom Longitudinal 1, Fwd, Stbd
BS-1BP	1	Bottom Longitudinal 1, Aft, Port
BS-1BS	1	Bottom Longitudinal 1, Aft, Stbd
BS-2AP	1	Bottom Longitudinal 2, Fwd, Port
BS-2AS	1	Bottom Longitudinal 2, Fwd, Stbd
BS-2BP	1	Bottom Longitudinal 2, Aft, Port
BS-2BS	1	Bottom Longitudinal 2, Aft, Stbd
BS-3AP	1	Bottom Longitudinal 3, Fwd, Port
BS-3AS	1	Bottom Longitudinal 3, Fwd, Stbd
BS-3BP	1	Bottom Longitudinal 3, Aft, Port
BS-3BS	1	Bottom Longitudinal 3, Aft, Stbd

BS-4AP	1	Bottom Longitudinal 4, Fwd, Port
BS-4AS	1	Bottom Longitudinal 4, Fwd, Stbd
BS-4BP	1	Bottom Longitudinal 4, Mid, Port
BS-4BS	1	Bottom Longitudinal 4, Mid, Stbd
TRS-1	2	Transom Stiffener @ BS1
TRS-2	2	Transom Stiffener @ BS2
TRS-3	2	Transom Stiffener @ BS3
TSL-AP	1	Topside Stringer, Fwd Port, Keel-F3
TSL-AS	1	Topside Stringer, Fwd Stbd Keel-F3
TSL-BP	1	Topside Stringer, Aft Port, F3-Tran
TSL-BS	1	Topside Stringer, Aft Stbd, F3-Tran

28 Total Pieces

3/8" 5083/86 Parts

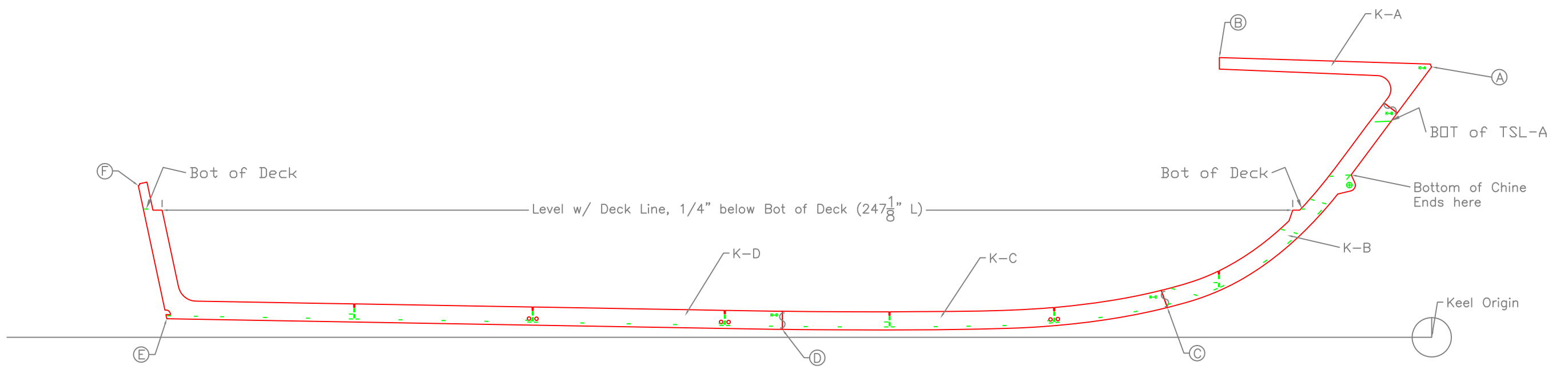
<u>Part #</u>	<u>Pieces</u>	<u>Description</u>
C-AP	1	Chine, Fwd, Port
C-AS	1	Chine, Fwd, Stbd
C-BP	1	Chine, Aft, Port
C-BS	1	Chine, Aft, Stbd
K-A	1	Keel, Fwd
K-B	1	Keel, Mid fwd
K-C	1	Keel, Mid aft
K-D	1	Keel, Aft
TR-1	1	Transom
TR-2	1	Transom Lip

10 Total 3/8" parts

96 Total Cut Parts

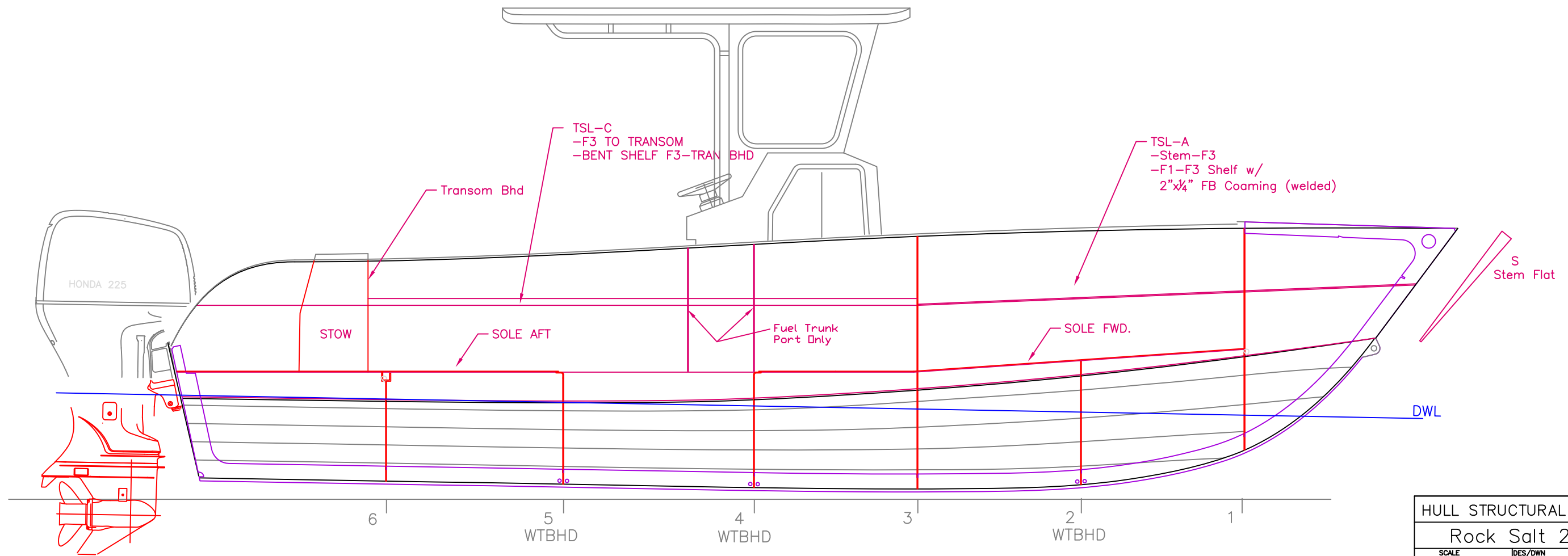
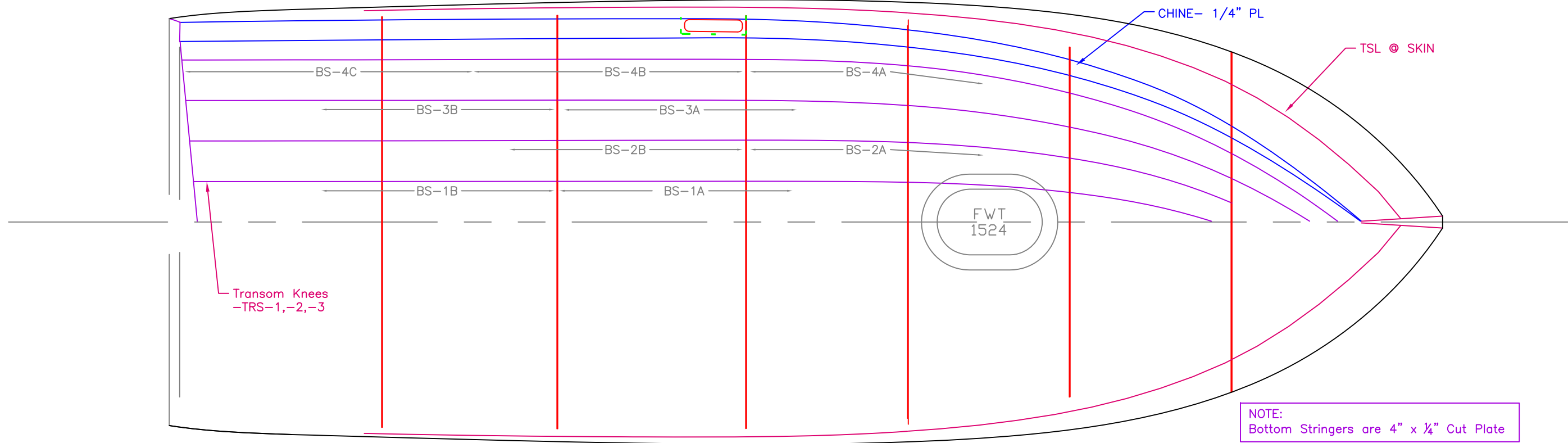
Response Marine, Inc.					
Rock Salt 24	2/11/05	REVISED	2/11/05		
Keel Points					
	Inches- sixteenths		Feet		
	Horizontal	Vertical		Horizontal	Vertical
A to Origin					
B to Origin					
C to Origin					
D to Origin					
E to Origin					
F to Origin					

Aligned: Inches-Sixteenths						
	A	B	C	D	E	F
A to						
B to						
C to						
D to						
E to						
F to						



KEEL LAYOUT		
Rock Salt 24- Sound		
SCALE 1/2" = 1'	DES/DWN WAL	DATE 4/28/14
Response Marine, Inc.		SHEET
Newburyport, MA, www.responsemarine.com		DWG NO. 473-2-1

REV.	DESCRIPTION



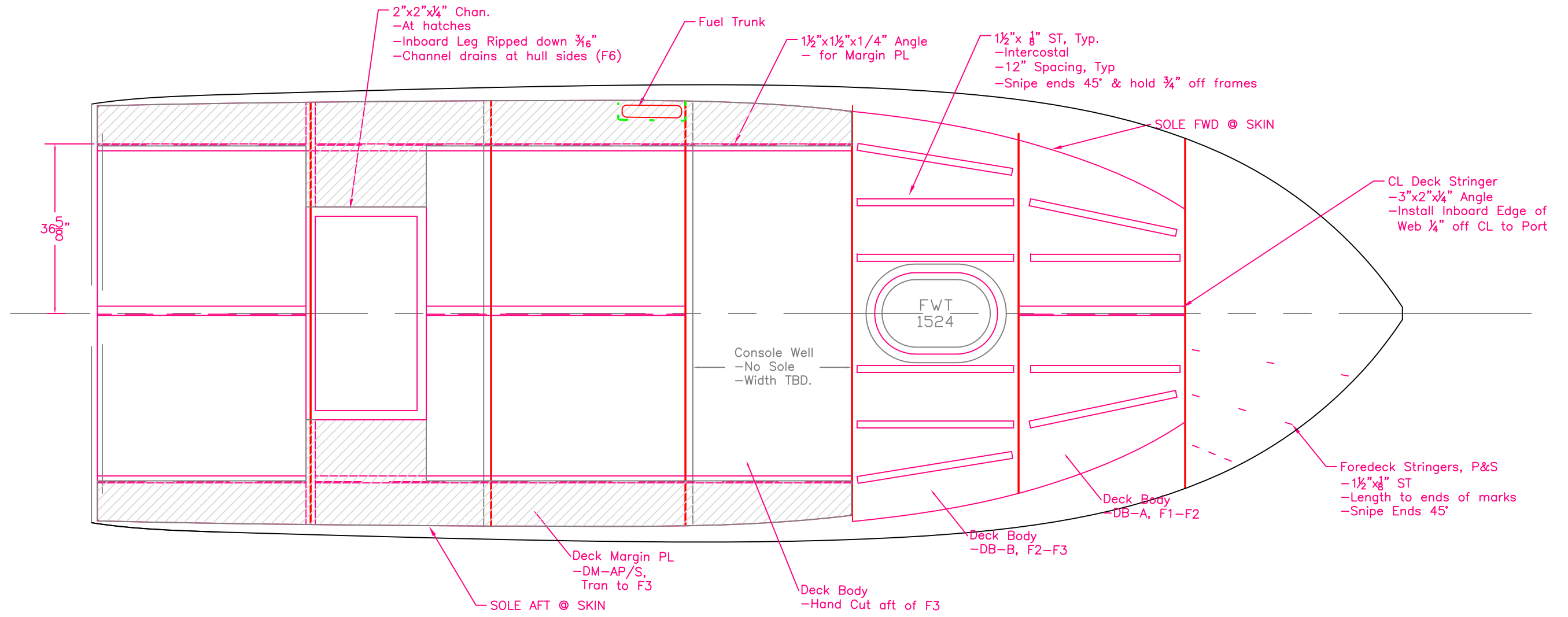
HULL STRUCTURAL PLAN & PROFILE

Rock Salt 24- Sound

SCALE 1/2" = 1'	DES/DWN WAL	DATE 4/28/14
--------------------	----------------	-----------------

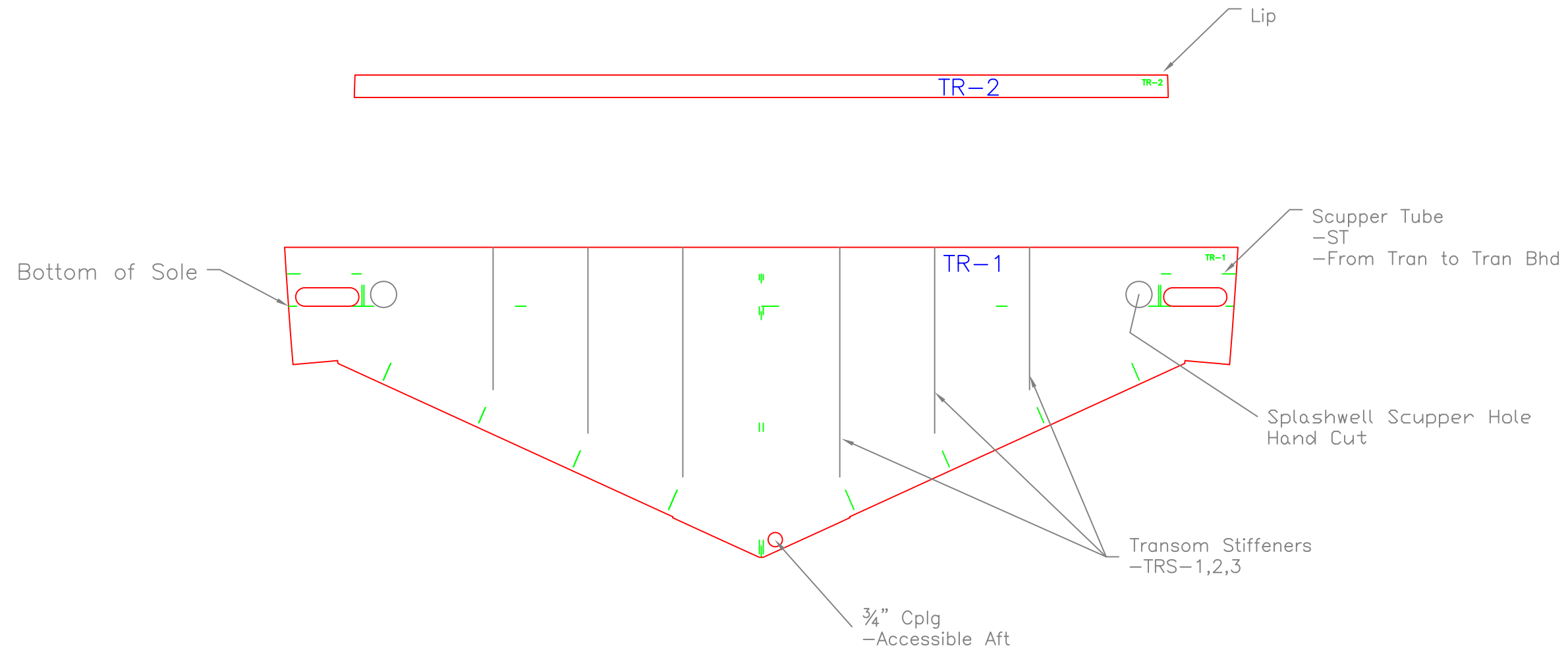
Response Marine, Inc.		SHEET
Newburyport, MA, www.responsemarine.com	DWG NO.	473-2-2

REV. DESCRIPTION



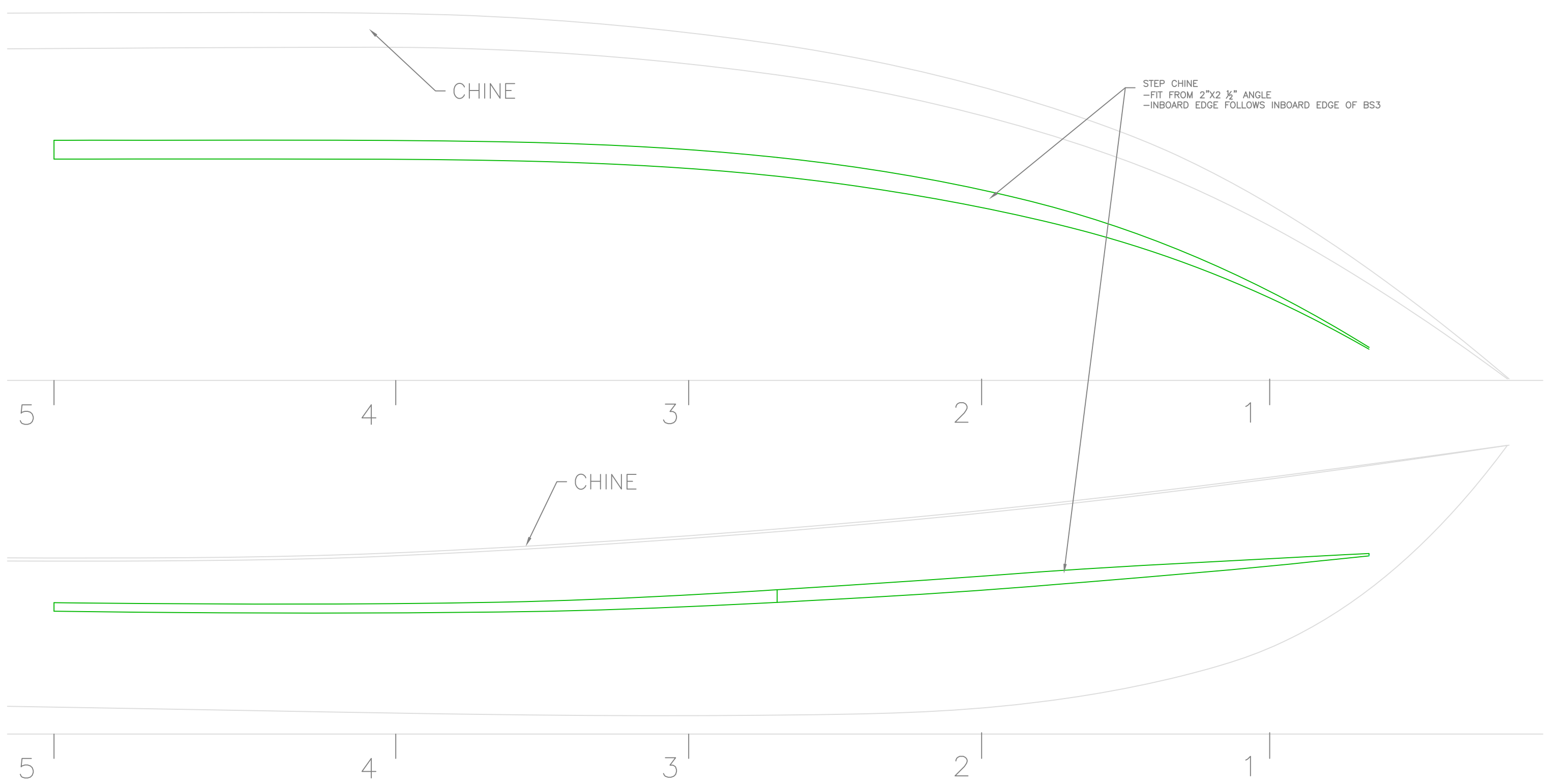
COCKPIT SOLE STRUCTURE		
Rock Salt 24- Sound		
SCALE 1/2" = 1'	DES/DWN WAL	DATE 4/28/14
Response Marine, Inc. Newburyport, MA, www.responsemarine.com		SHEET DWG NO. 473-2-3

REV.	DESCRIPTION



TRANSOM		
Rock Salt 24- Sound		
SCALE 1" = 1'	DES/DWN WAL	DATE 4/28/14
Response Marine, Inc. Newburyport, MA, www.responsemarine.com		SHEET DWG NO. 473-2-4

REV.	DESCRIPTION



CHINE

STEP CHINE
 -FIT FROM 2"x2 1/2" ANGLE
 -INBOARD EDGE FOLLOWS INBOARD EDGE OF BS3

CHINE

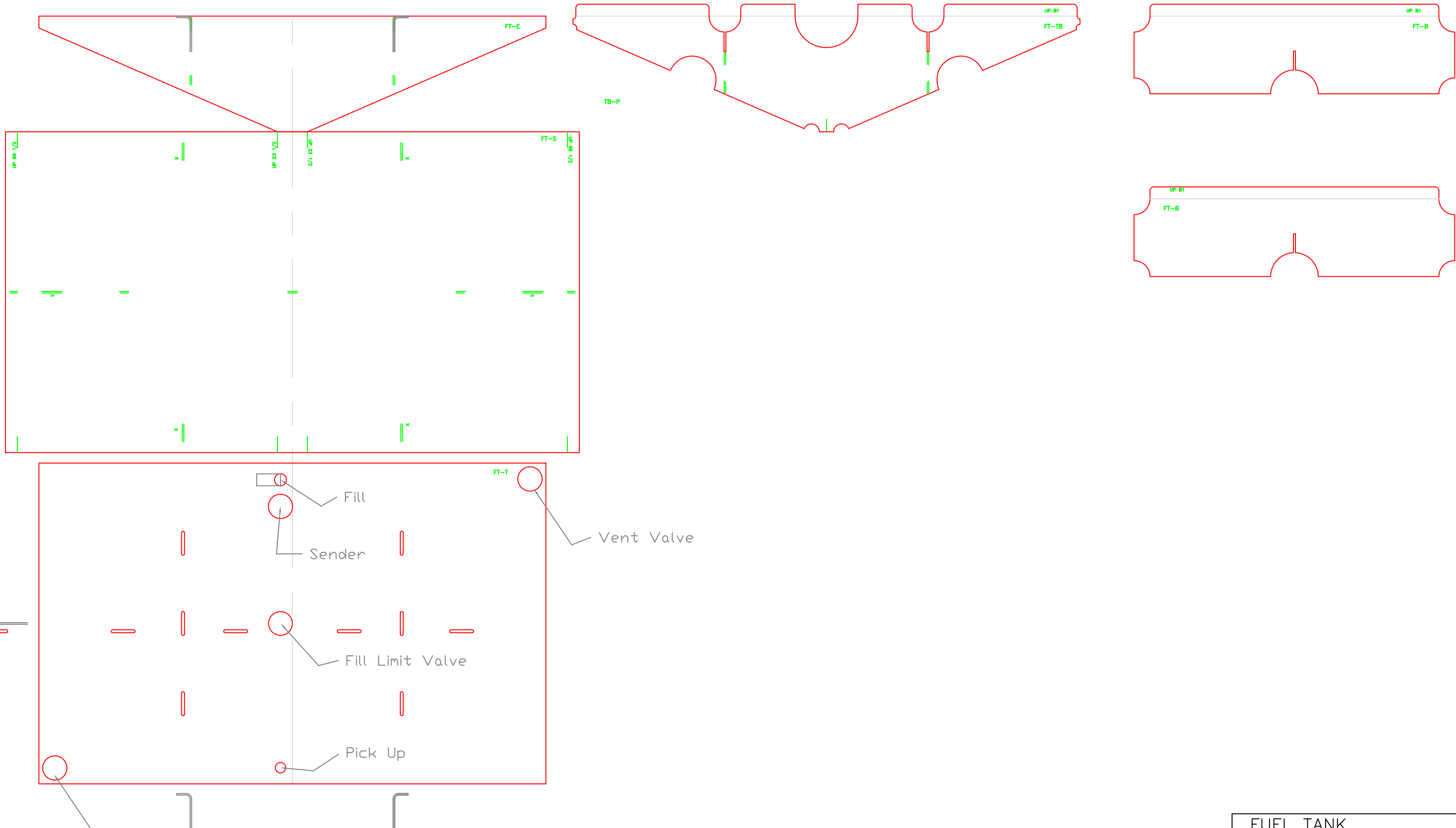
STEP CHINE- Plan/Pro

RockSalt 24- Sound

SCALE 1" = 1'	DES/DWN WAL	DATE 4/28/14
------------------	----------------	-----------------

Response Marine, Inc.		SHEET
Newburyport, MA, www.responsemarine.com		DWG NO. 473-2-5

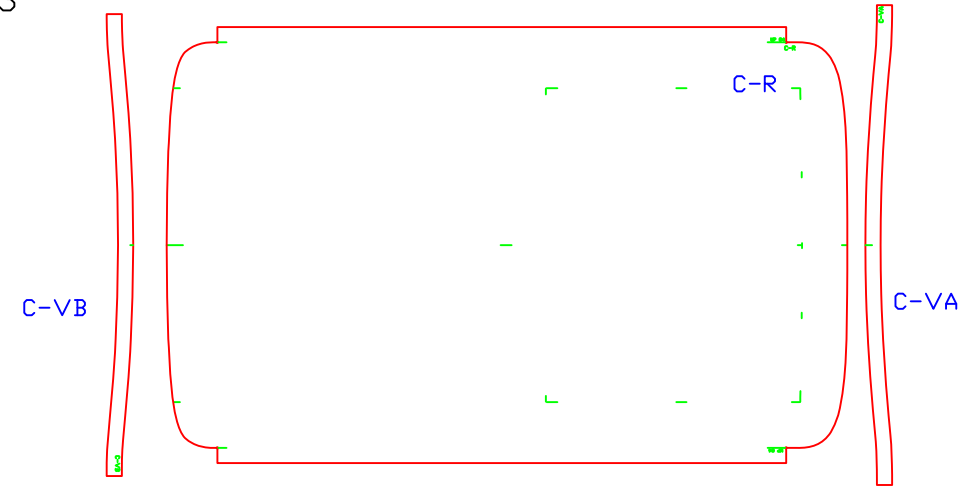
REV.	DESCRIPTION



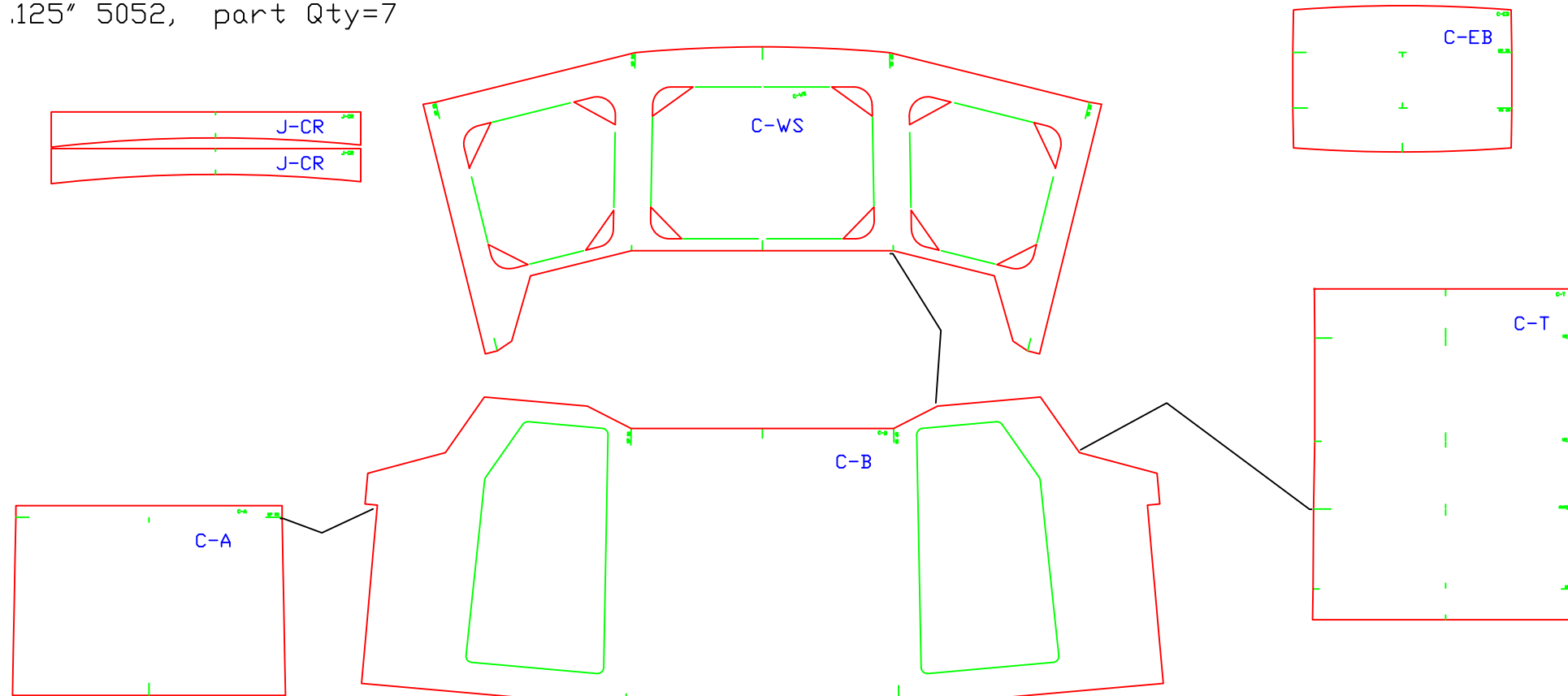
FUEL TANK		
RockSalt 24- Sound		
SCALE 1" = 1'	DES/DWN WAL	DATE 4/15/14
Response Marine, Inc. Newburyport, MA, www.responsemarine.com		SHEET DWG NO. 473-3-1

REV.	DESCRIPTION

.190" 5052, part Qty=3



.125" 5052, part Qty=7



Console Parts
Rock Salt 24- Sound

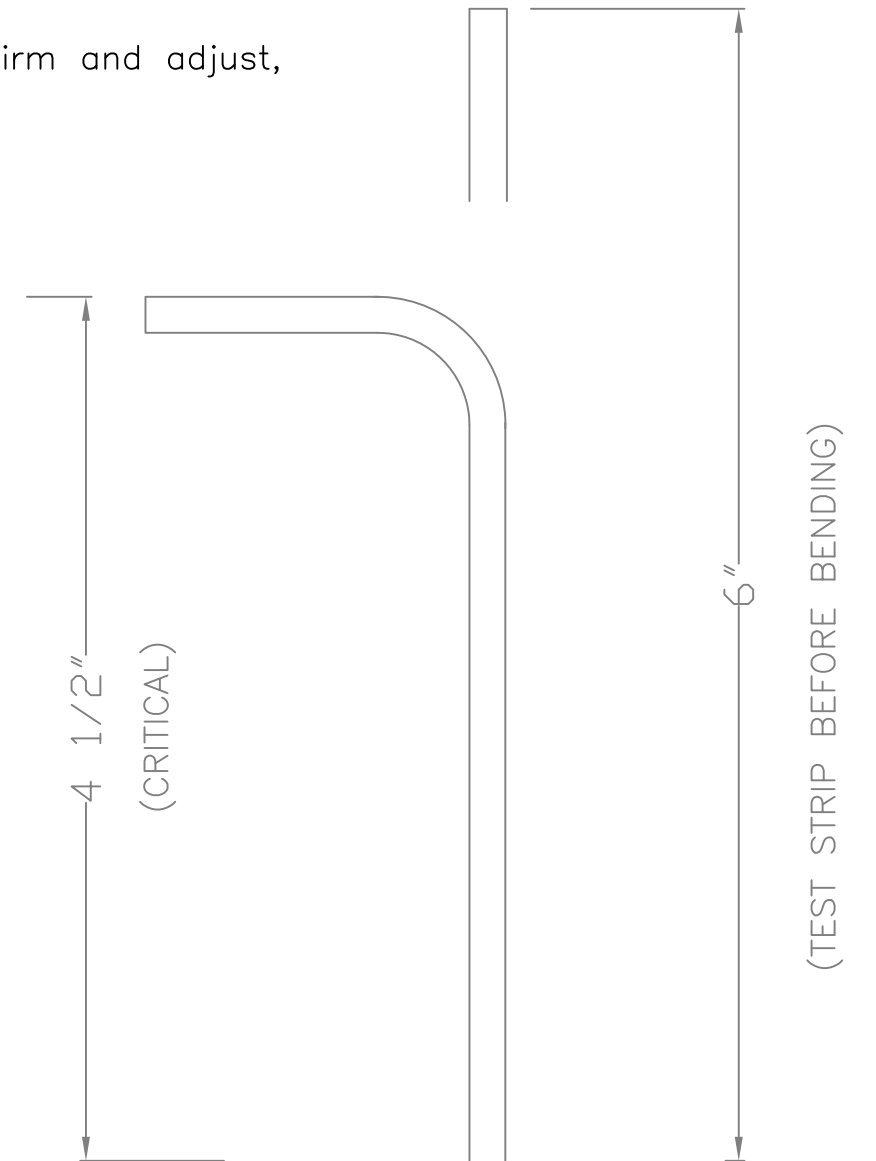
SCALE NONE	DES/DWN WAL	DATE 4/30/14
---------------	----------------	-----------------

REV.	DESCRIPTION

Response Marine, Inc. Newburyport, MA, www.responsemarine.com	SHEET DWG NO. 473-4-1
---	-----------------------------

STANDARD FLANGE BENDING: $\frac{3}{16}$ " 5086/83 H116 Stock

- 1) Confirm results for dimensions and cracking with test strips before bending frames.
- 2) Expected Die Radius is $\frac{1}{2}$ "
- 3) Flanges are designed for outside major flange length of $1\frac{1}{2}$ " less than flat stock length as shown.
- 4) Expected Back Gauge setting is 1.74", but confirm and adjust, based on test strip.



F3	1	Frame 3, Main Lower	Y	B-1 Flange
F3-P	1	Frame 3, Upper, Port	Y	B-1 Flange
F3-S	1	Frame 3, Upper, Stbd	Y	B-1 Flange
F4	1	Frame 4	Y	B-1 Flange
F5	1	Frame 5	Y	B-1 Flange
FT-B	2	Fuel Tank Baffle	Y	B-1 Flange
FT-BT	1	Fuel Tank Baffle	Y	B-1 Flange
TLB	1	Transom Lkr. Bhd	Y	B-1 Flange
F2	1	Frame 2	Y	B-1 Back Gauge, UP 86 Degrees
	10	Total Flanges		

FLANGE BENDING

Rock Salt 24- Sound

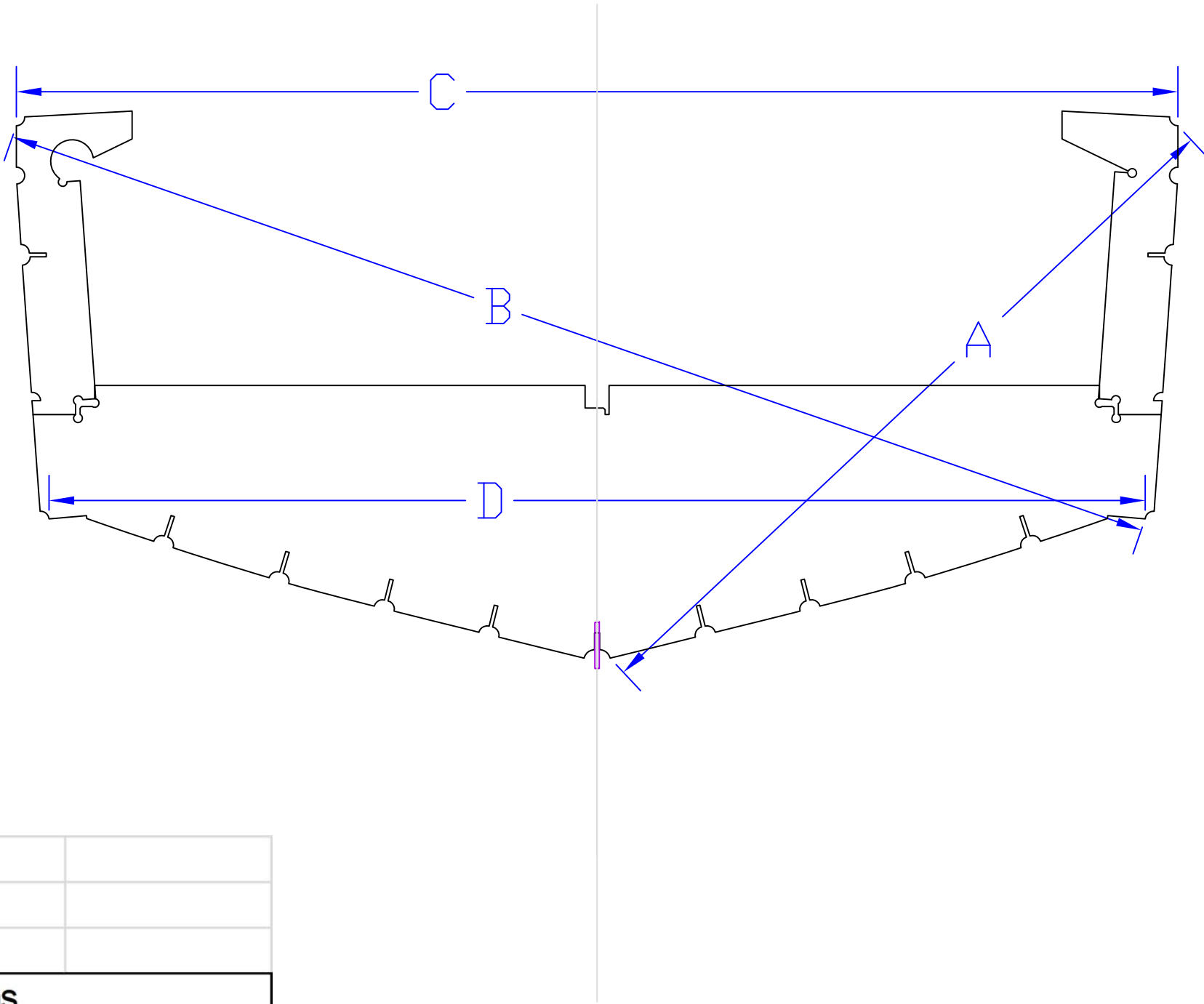
SCALE 1 1/2" = 1' DES/DWN WAL DATE 4/28/14

SHEET

Response Marine, Inc. DWG NO. 473-B-1

Newburyport, MA, www.responsemarine.com

REV. DESCRIPTION

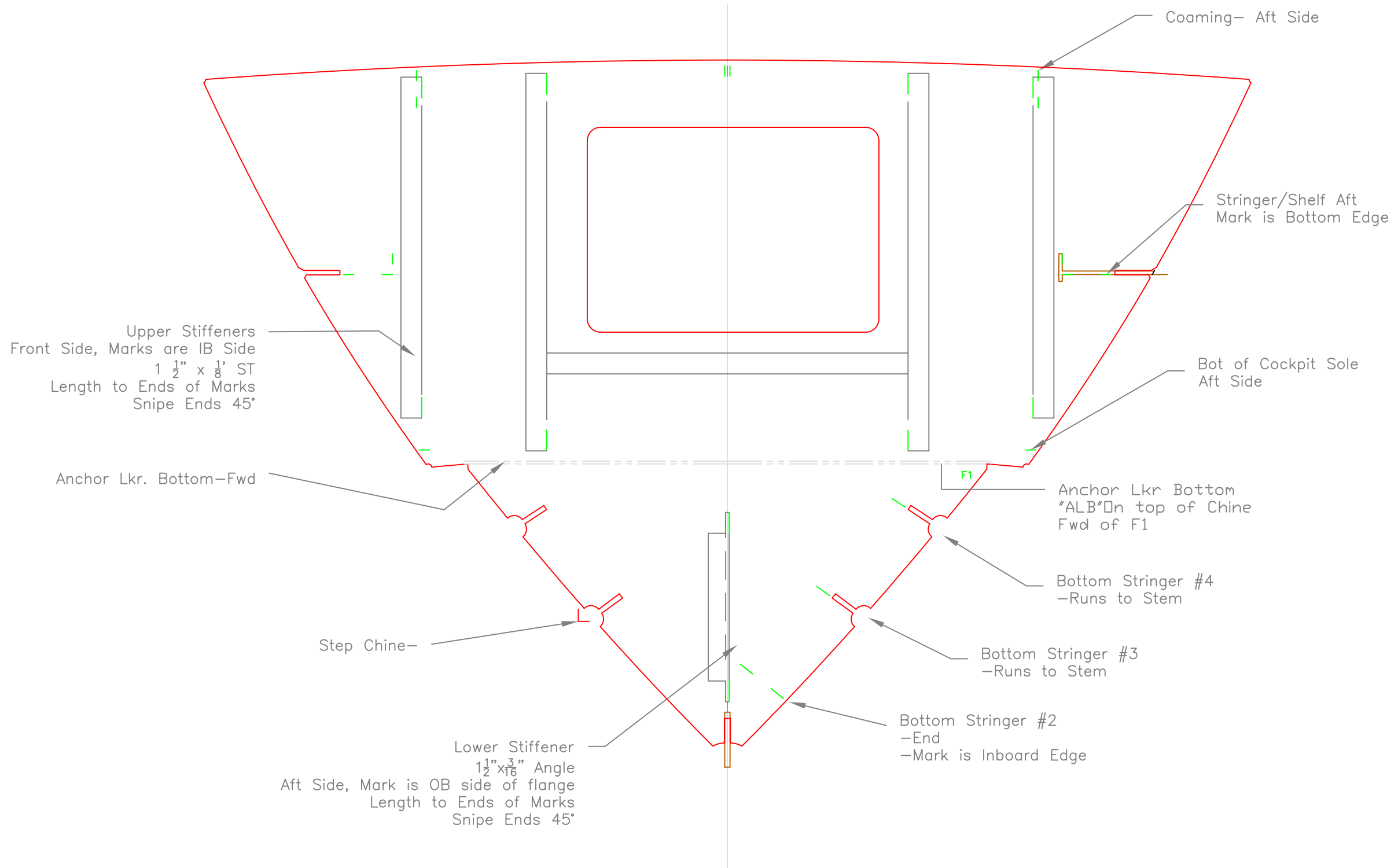


Response Marine, Inc.				
Rock Salt 24	4/28/14			
FRAME DIMENSIONS				
	Inches- sixteenths			
	A	B	C	D
F1				
F2				
F3				
F4				
F5				
F6				

FRAME DIMENSIONS		
Rock Salt 24- Sound		
SCALE 1 1/2" = 1'	DES/DWN WAL	DATE 4/28/14
Response Marine, Inc. Newburyport, MA, www.responsemarine.com		SHEET DWG NO. 473-F-R

REV. DESCRIPTION

Frame 1
 WTBHD Chine and above
 L'KG AFT
 MARKS FWD



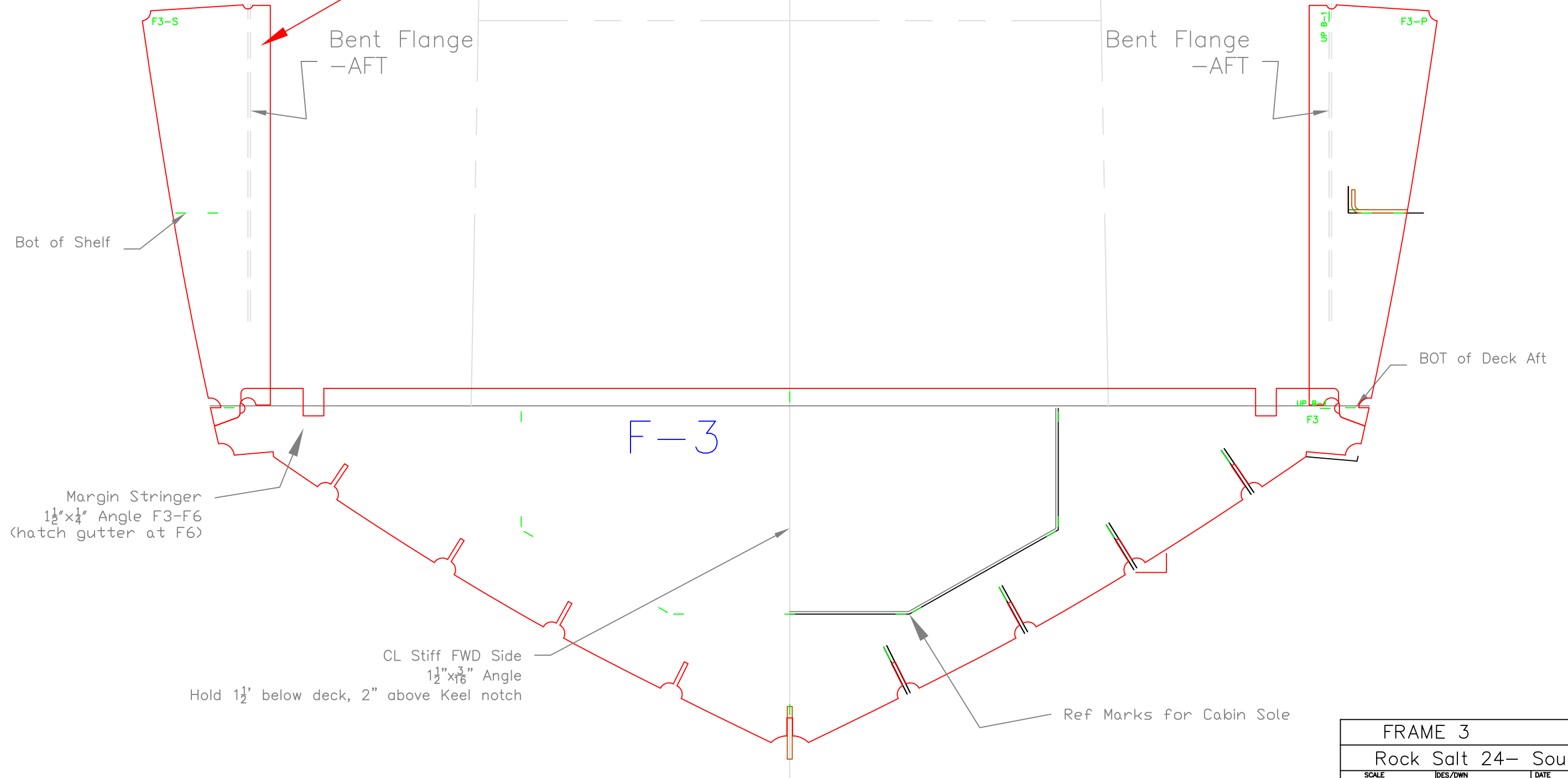
FRAME 1		
Rock Salt 24- Sound		
SCALE 1 1/2" = 1'	DES/DWN WAL	DATE 4/28/14
Response Marine, Inc. Newburyport, MA, www.responsemarine.com		SHEET DWG NO. 473-F-1

REV.	DESCRIPTION

Console

Install TS Frames w/ Flange AFT
(Reverse P/S parts)

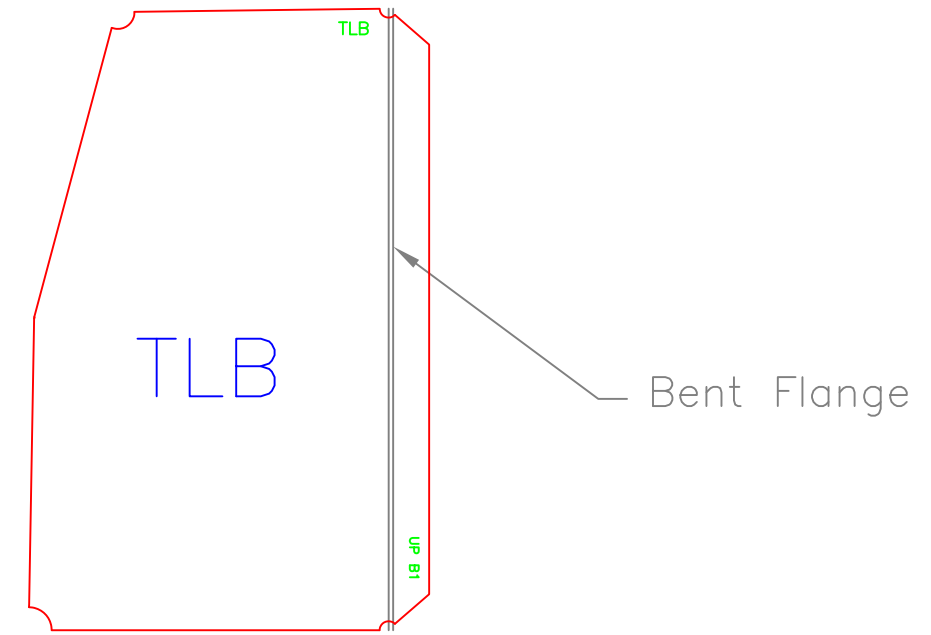
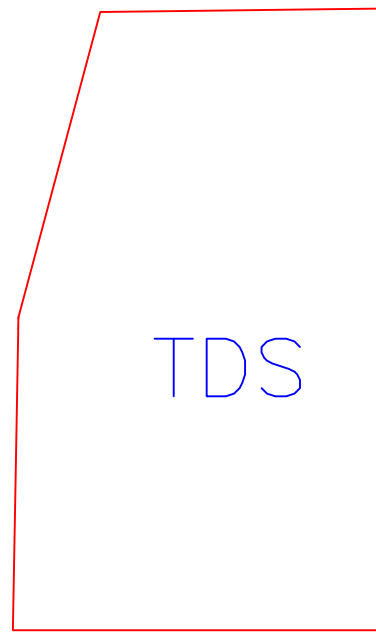
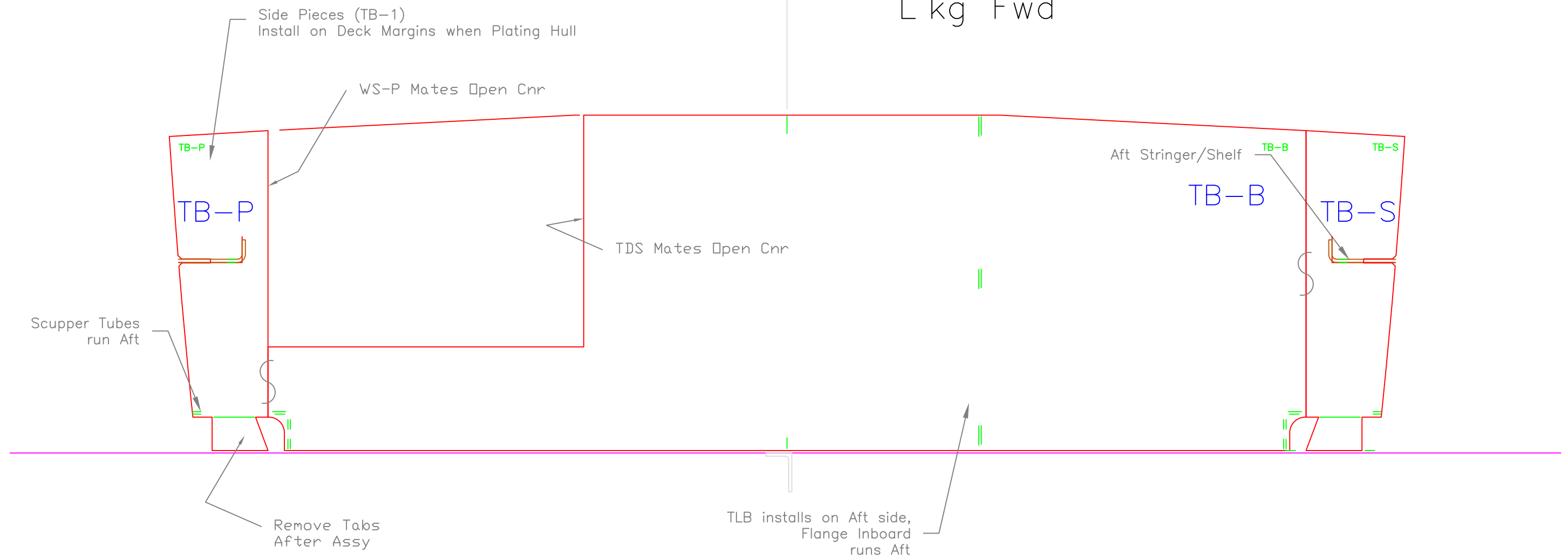
Frame 3 L'KG FWD MARKS AFT, FLANGES AFT



FRAME 3		
Rock Salt 24- Sound		
SCALE 1 1/2" = 1'	DES/DWN WAL	DATE 4/28/14
Response Marine, Inc. Newburyport, MA, www.responsemarine.com		SHEET DWG NO. 473-F-3

REV.	DESCRIPTION

Transom Bhd L'kg Fwd



TRANSOM BHD		
Rock Salt 24- Sound		
SCALE 1 1/2" = 1'	DES/DWN WAL	DATE 4/28/14
Response Marine, Inc. Newburyport, MA, www.responsemarine.com		SHEET DWG NO. 473-F-7

REV.	DESCRIPTION