

NDP 4427# @12  
 MAINE DEP  
 Needs Update

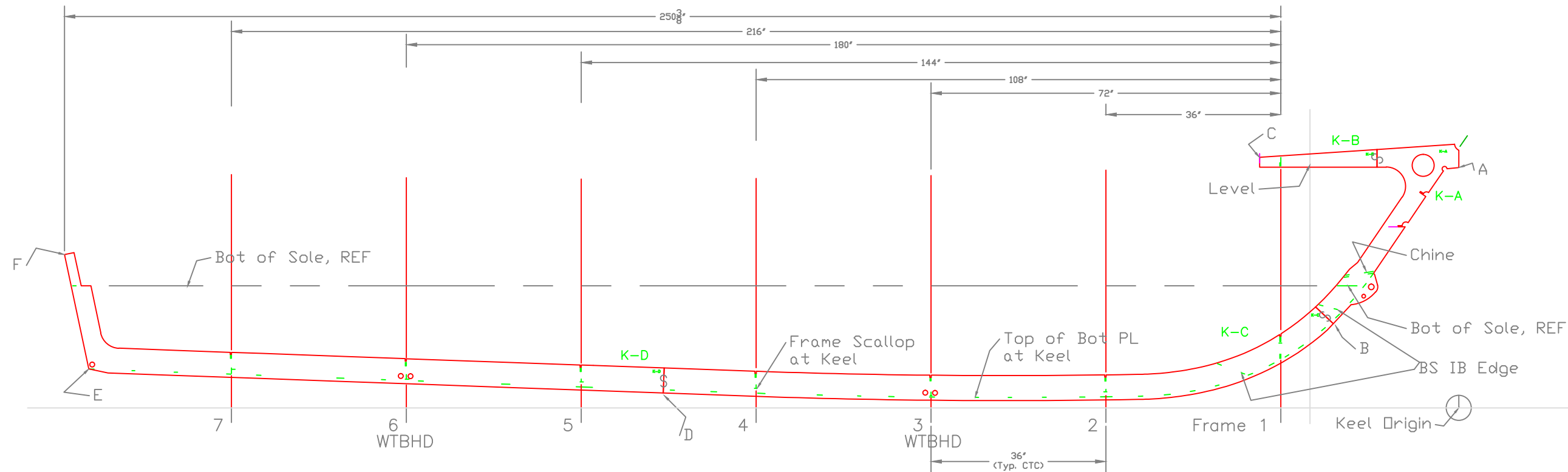
PROFILE & PLAN

Response FR-24BB x 8'  
 For: South Portland F.D.

SCALE 1/2" = 1'	DES/DWN WAL	DATE 8/19/12
--------------------	----------------	-----------------

<b>Response Marine, Inc.</b>	DWG NO. 425-01
Newburyport, MA, <a href="http://www.responsemarine.com">www.responsemarine.com</a>	

REV.    DESCRIPTION

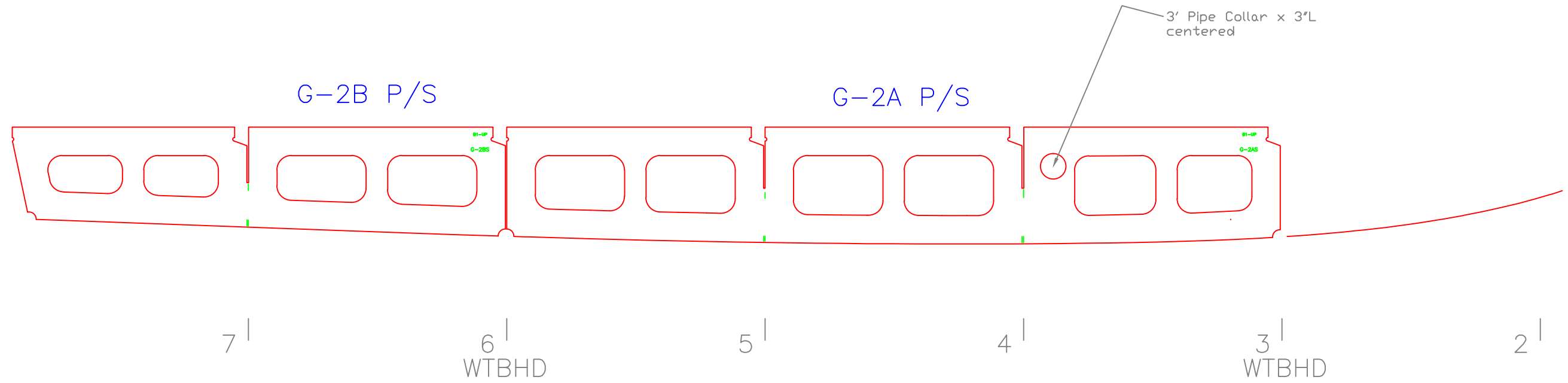


Response Marine, Inc.						
#425, S. Portland		8/1/12				
Keel Points						
	Inches- sixteenths		Feet			
	Horizontal	Vertical		Horizontal	Vertical	
A to Origin	0	10 9/16		0.0000	1.1255	
B to Origin						
C to Origin						
D to Origin						
E to Origin						
F to Origin						
ALIGNED (INCHES)						
	A	B	C	D	E	F
A to						
B to						
C to						
D to						
E to						

KEEL LAYOUT		
South Portland 24'X8'		
SCALE 1/2" = 1'	DES/DWN WAL	DATE 8/1/12
<b>Response Marine, Inc.</b> Newburyport, MA, www.responsemarine.com		SHEET 425-2-1

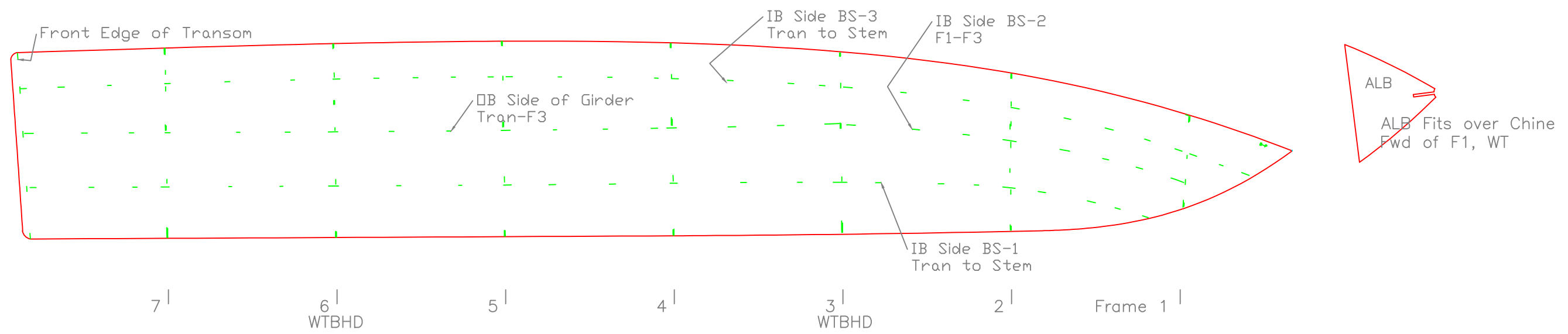
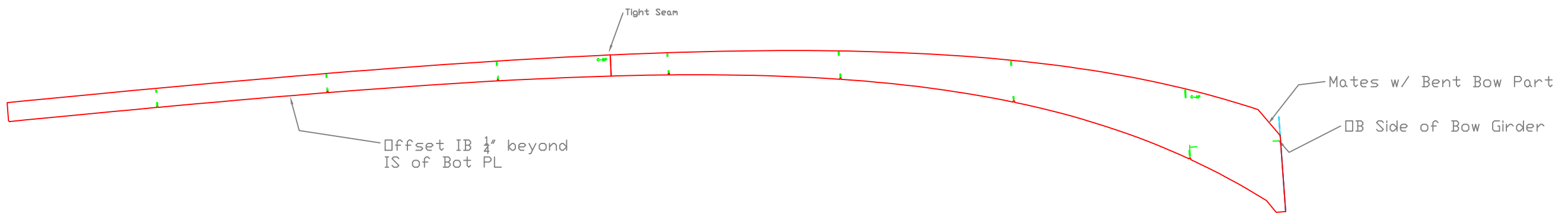
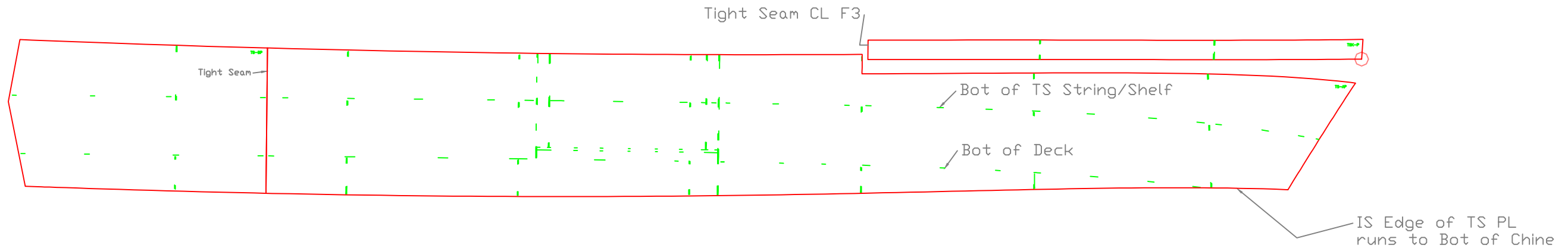
REV.	DESCRIPTION

Bent Flanges install OUTBOARD  
 No Flanges on Cutouts



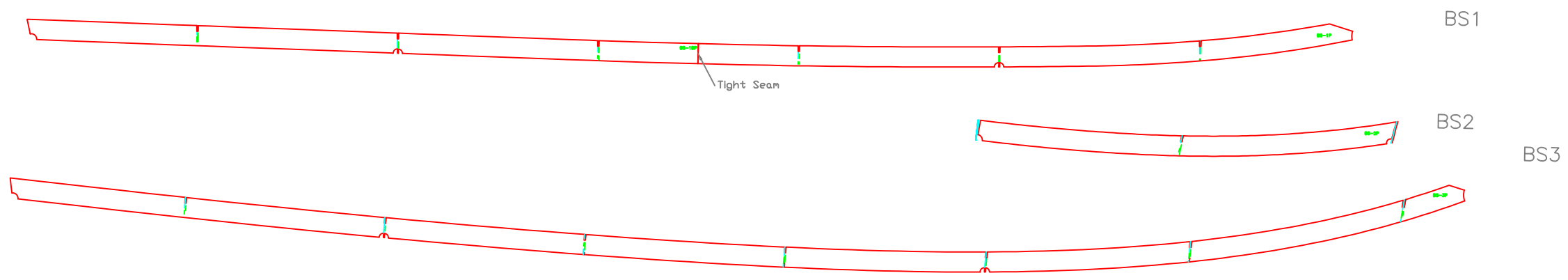
GIRDER LAYOUT		
S. Portland 24'x8'		
SCALE 3/4" = 1'	DES/DWN WAL	DATE 8/1/12
<b>Response Marine, Inc.</b> Newburyport, MA, www.responsemarine.com		SHEET DWG NO. 425-2-2

REV.	DESCRIPTION



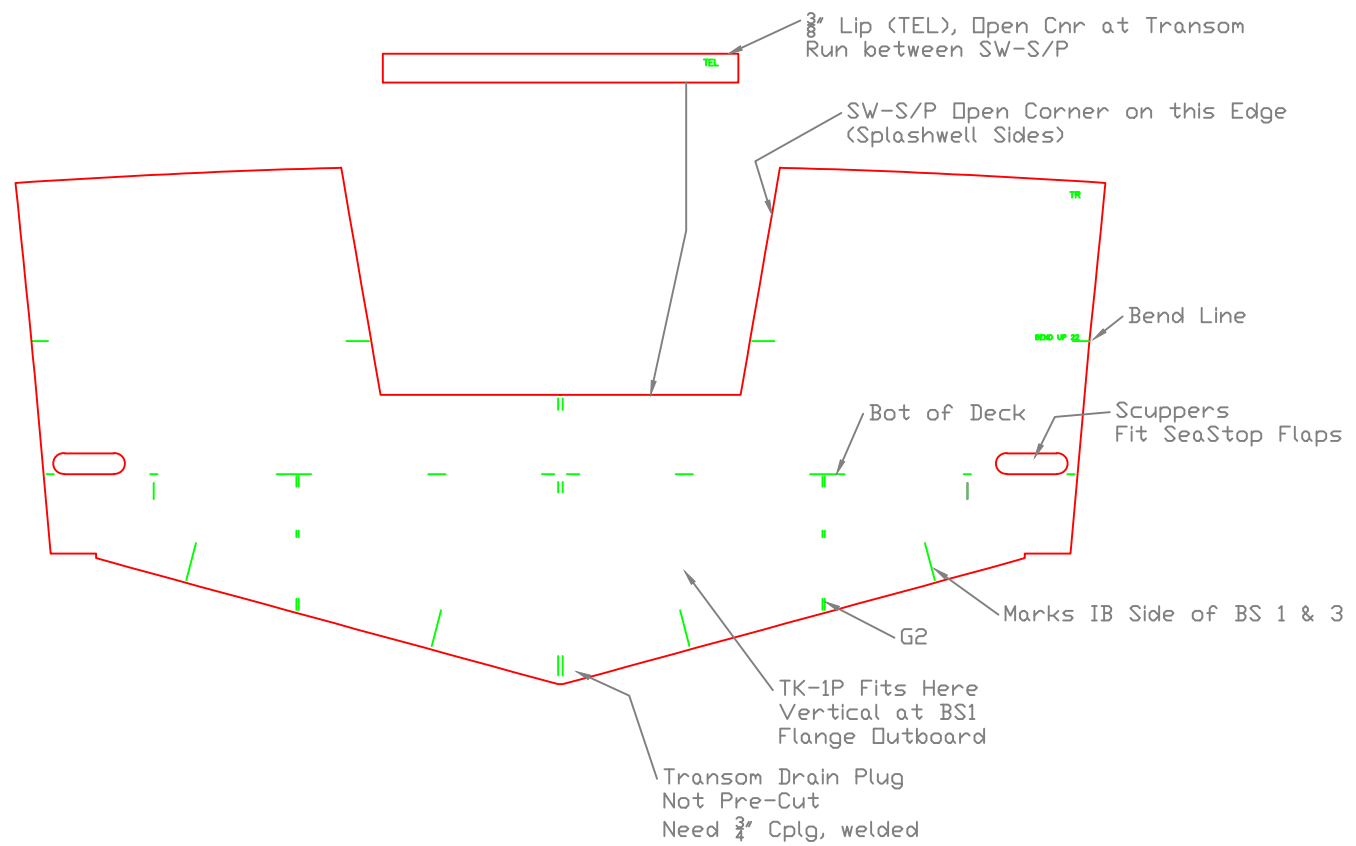
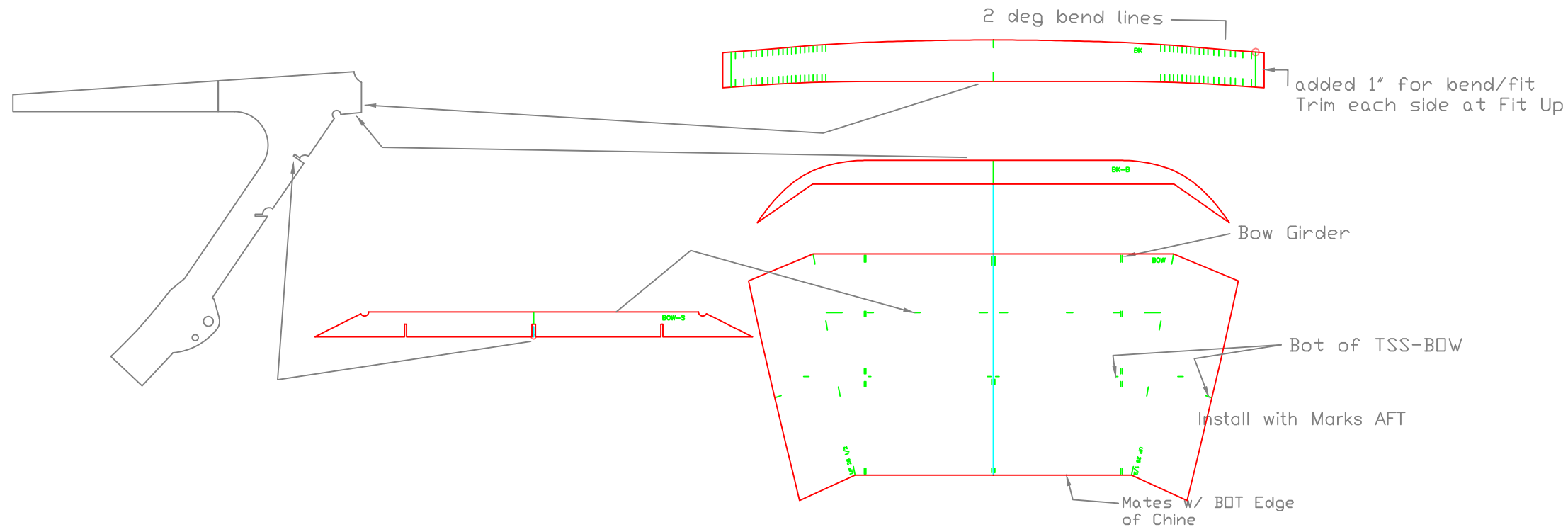
7 | 6 | 5 | 4 | 3 | 2 | Frame 1 |

WTBHD WTBHD



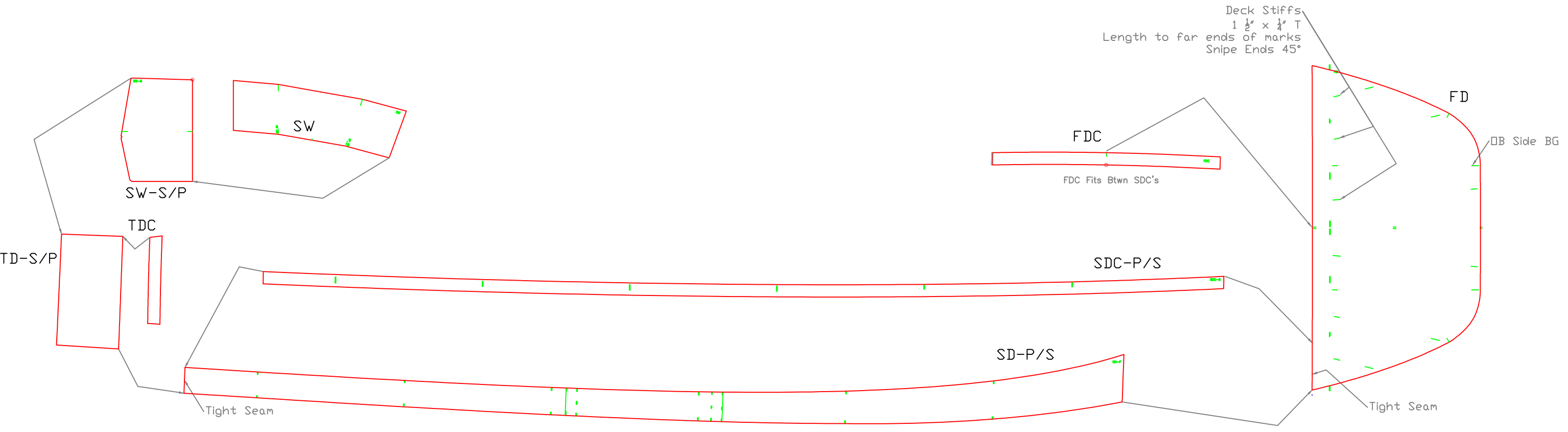
HULL SKIN LAYOUT		
S. Portland 24'X8'		
SCALE 1/2" = 1'	DES/DWN WAL	DATE 8/19/12
<b>Response Marine, Inc.</b> Newburyport, MA, www.responsemarine.com		SHEET DWG NO. 425-2-3

REV.	DESCRIPTION



REV.	DESCRIPTION

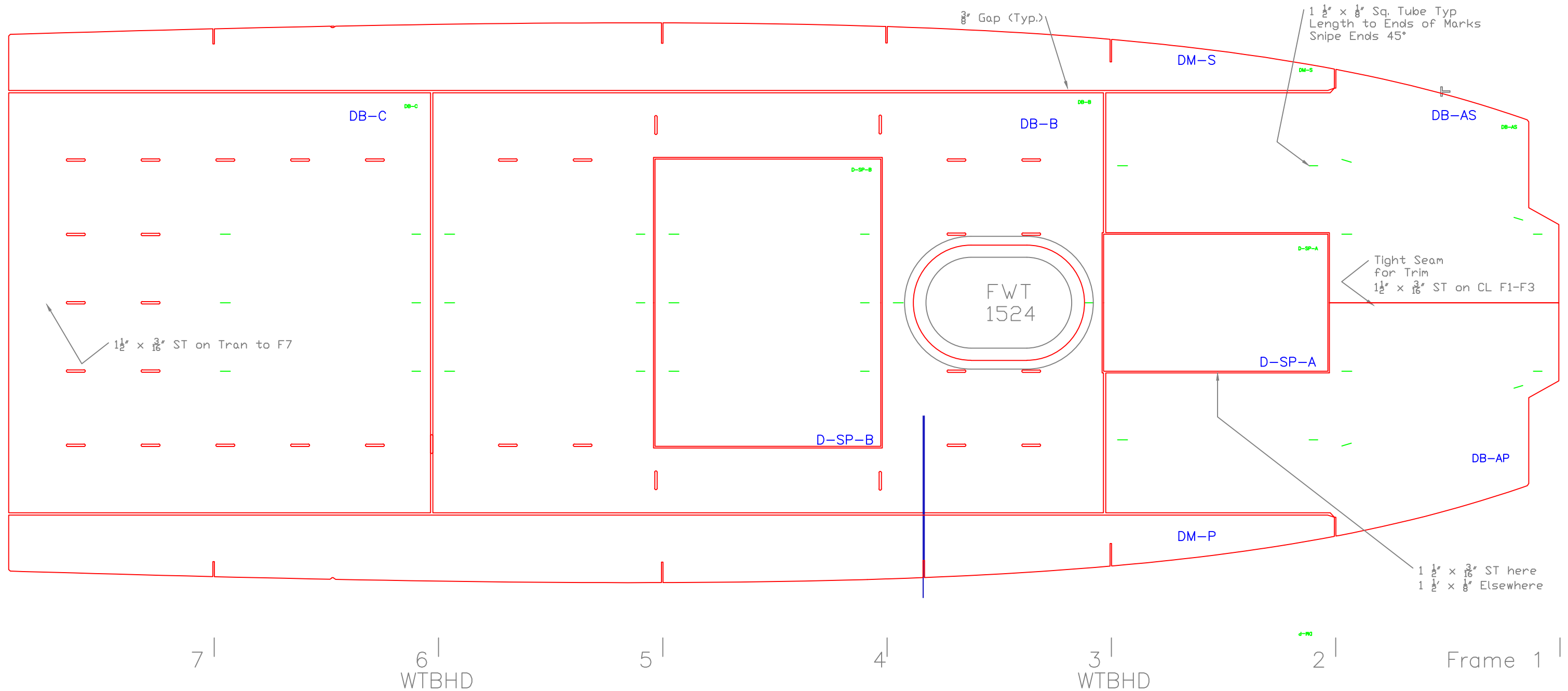
<b>BOW &amp; TRANSOM</b>		
S. Portland 24'X8'		
SCALE 3/4" = 1'	DES/DWN WAL	DATE 8/19/12
<b>Response Marine, Inc.</b> Newburyport, MA, www.responsemarine.com		SHEET DWG NO. 425-2-4



SIDE & FORE DECKS		
S. Portland 24'X8'		
SCALE 1/2" = 1'	DES/DWN WAL	DATE 8/19/12
<b>Response Marine, Inc.</b> Newburyport, MA, www.responsemarine.com		SHEET DWG NO. 425-2-5

REV.	DESCRIPTION

Deck Tank & Console are Viewed From BOTTOM



COCKPIT DECKS		
S. Portland 24'X8'		
SCALE 3/4" = 1'	DES/DWN WAL	DATE 8/19/12
<b>Response Marine, Inc.</b> Newburyport, MA, www.responsemarine.com		SHEET DWG NO. 425-2-6

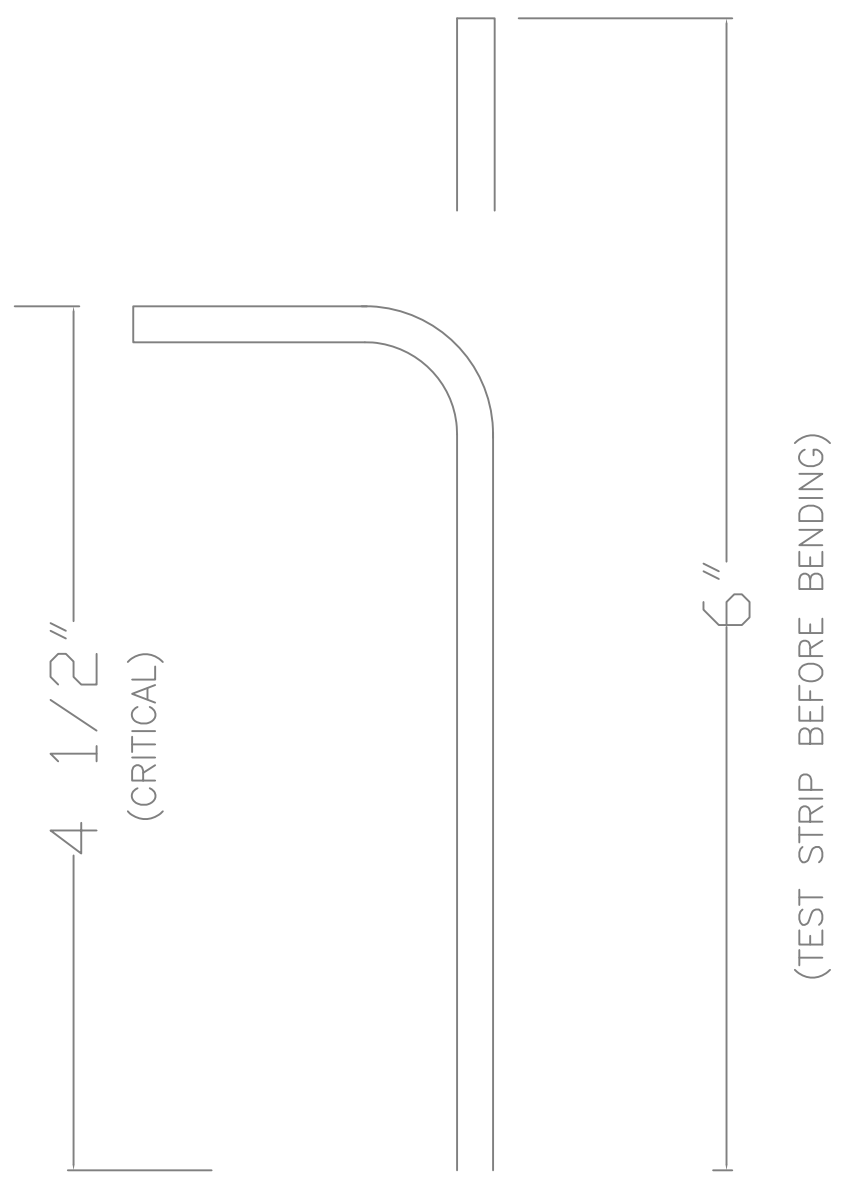
REV.	DESCRIPTION

STANDARD FLANGE BENDING:  $\frac{3}{16}$ " 5086/83 H116 Stock

- 1) Confirm results for dimensions and cracking with test strips before bending frames.
  - 2) Expected Die Radius is  $\frac{1}{2}$ "
  - 3) Flanges are designed for outside major flange length of  $1\frac{1}{2}$ " less than flat stock length as shown.
  - 4) Expected Back Gauge setting is 1.74", but confirm and adjust, based on test strip.
- Parts to be flanged per this same set-up are listed at left.

+ DD-HB, Dive Door Frame Aft

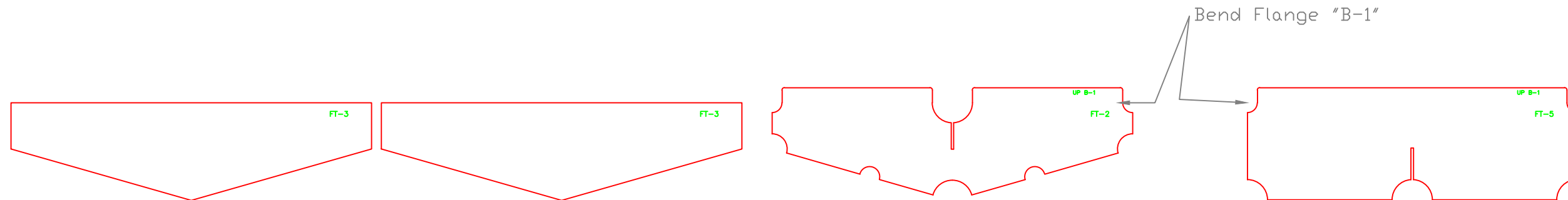
DD-A	1	Dive Door Frame, Fwd
DD-B	1	Dive Door Frame, Aft
DD-HA1	1	Dive Door Hull Frame, Fwd, Up
DD-HT	1	Dive Door Hull Threshold
F2	1	Frame 2
F2-P	2	Frame 2, Upper, Port
F2-S	2	Frame 2, Upper, Stbd
F3	1	Frame 3
F3-U	2	Frame 3, Upper
F4	1	Frame 4
F4-U	1	Frame 4, Upper, Stbd Only
F5	1	Frame 5
F5-U	2	Frame 5, Upper
F6	1	Frame 6
F7	1	Frame 7
F7-U	2	Frame 7, Upper
FT-2	1	Fuel Tank Baffle
G-2AP	1	Girder, Fwd, Port
G-2AS	1	Girder, Fwd Stbd
G-2BP	1	Girder, Aft, Port
G-2BS	1	Girder, Aft, Stbd
TK-1P	1	Transom Knee, at BS 1, Port
TK-1S	1	Transom Knee, at BS 1, Stbd
TSS-AP	1	Topside Shelf, Fwd Port
TSS-AS	1	Topside Shelf, Fwd Stbd
TSS-BP	1	Topside Shelf, Mid, Port
TSS-BS	1	Topside Shelf, Mid, Stbd
TSS-CP	1	Topside Shelf, Aft, Port
TSS-CS	1	Topside Shelf, Aft, Stbd
TSS-DD	1	Topside Shelf, Dive Door
Total Parts	35	36



TYP. FLANGE BENDING		
S. Portland 24'X8'		
SCALE FULL	DES/DWN WAL	DATE 8/19/12
<b>Response Marine, Inc.</b>		SHEET
Newburyport, MA, www.responsemarine.com		DWG NO. 425-B-1

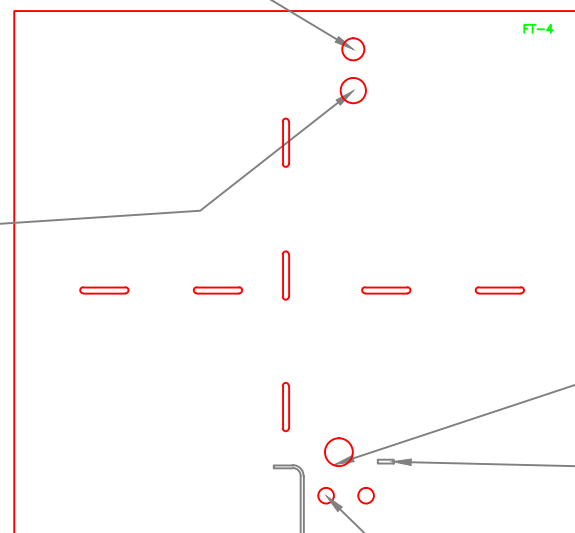
REV. DESCRIPTION





$\frac{3}{4}$ " Cplg for  $\frac{3}{4}$  x  $\frac{1}{2}$ " SS Bush,  $\frac{1}{2}$ " x  $\frac{5}{8}$ " BR Barb  
Lead to STBD

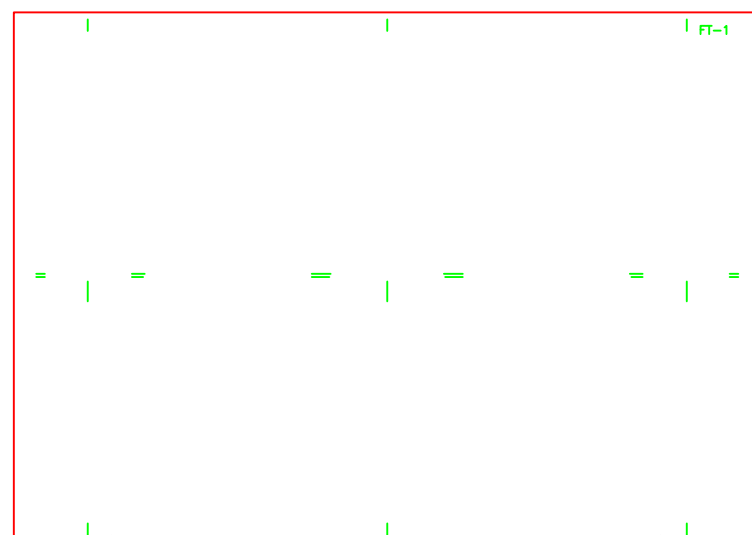
$1\frac{1}{2}$ " Fill, 90° Lead to STBD Mitered  $1\frac{1}{2}$ " OD Tubing  
Keep top at 2" above Tank



Sender, Moeller, Reed Switch Style, 8"  
PN M0E 03576110

Ground Tab

Pick Ups  
 $\frac{3}{8}$ " Cplg welded at tank  
to receive  $\frac{3}{8}$ " Withdrawal tube & Valve  
Lead to Port



Bend Lines

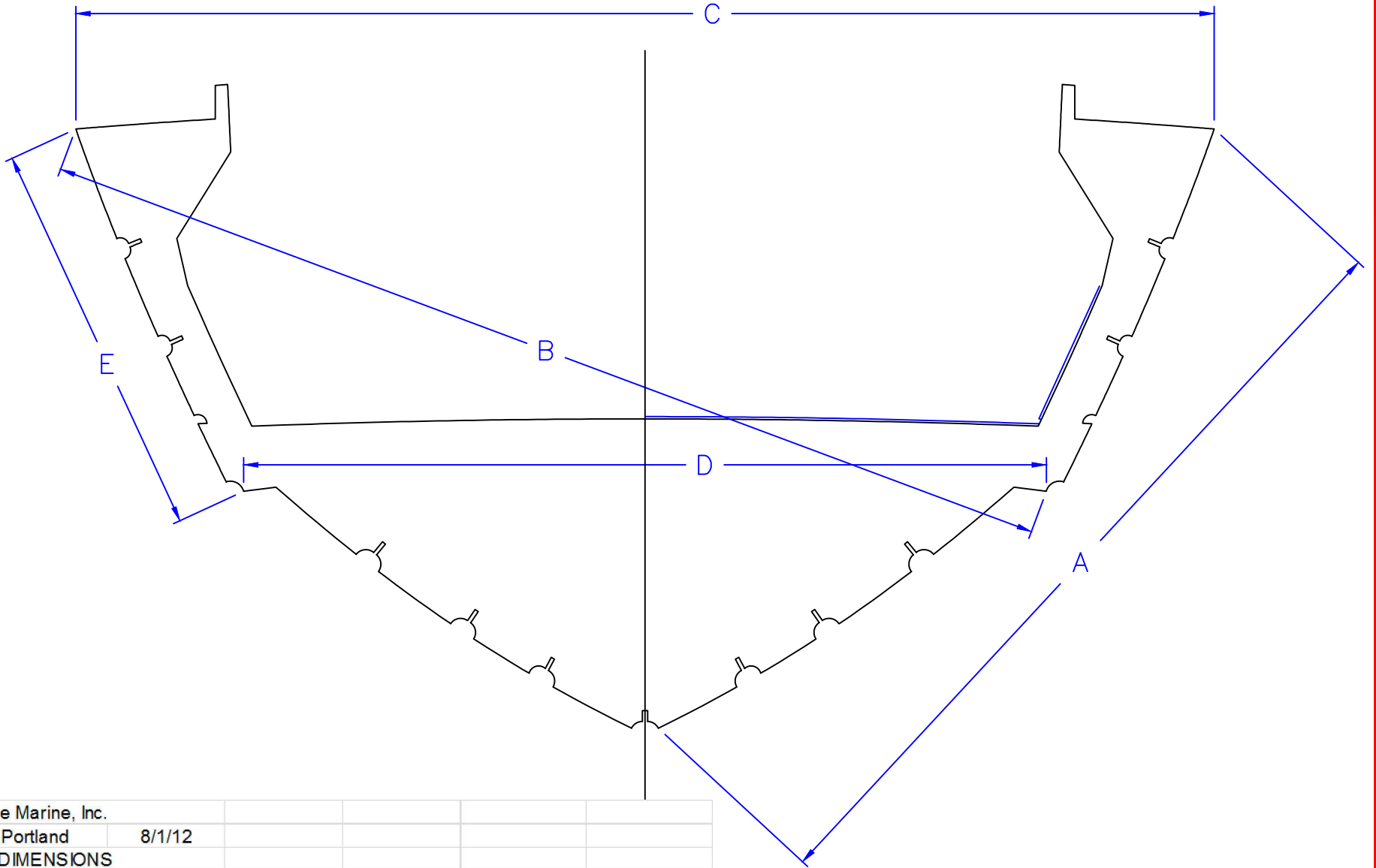
FUEL TANK, 35 Gal.

S. Portland 24'X8'

SCALE 1"=1'	DES/DWN WAL	DATE 8/19/12
----------------	----------------	-----------------

SHEET		DWG NO.
Response Marine, Inc.		425-3-1
Newburyport, MA, www.responsemarine.com		

REV.	DESCRIPTION



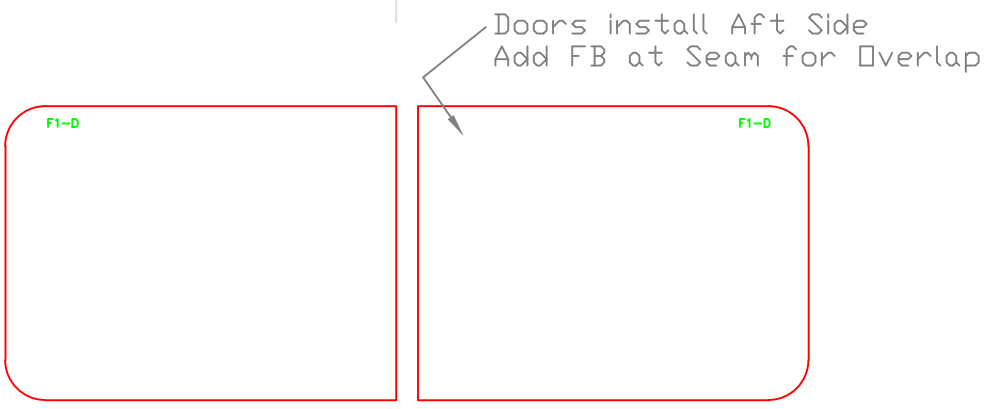
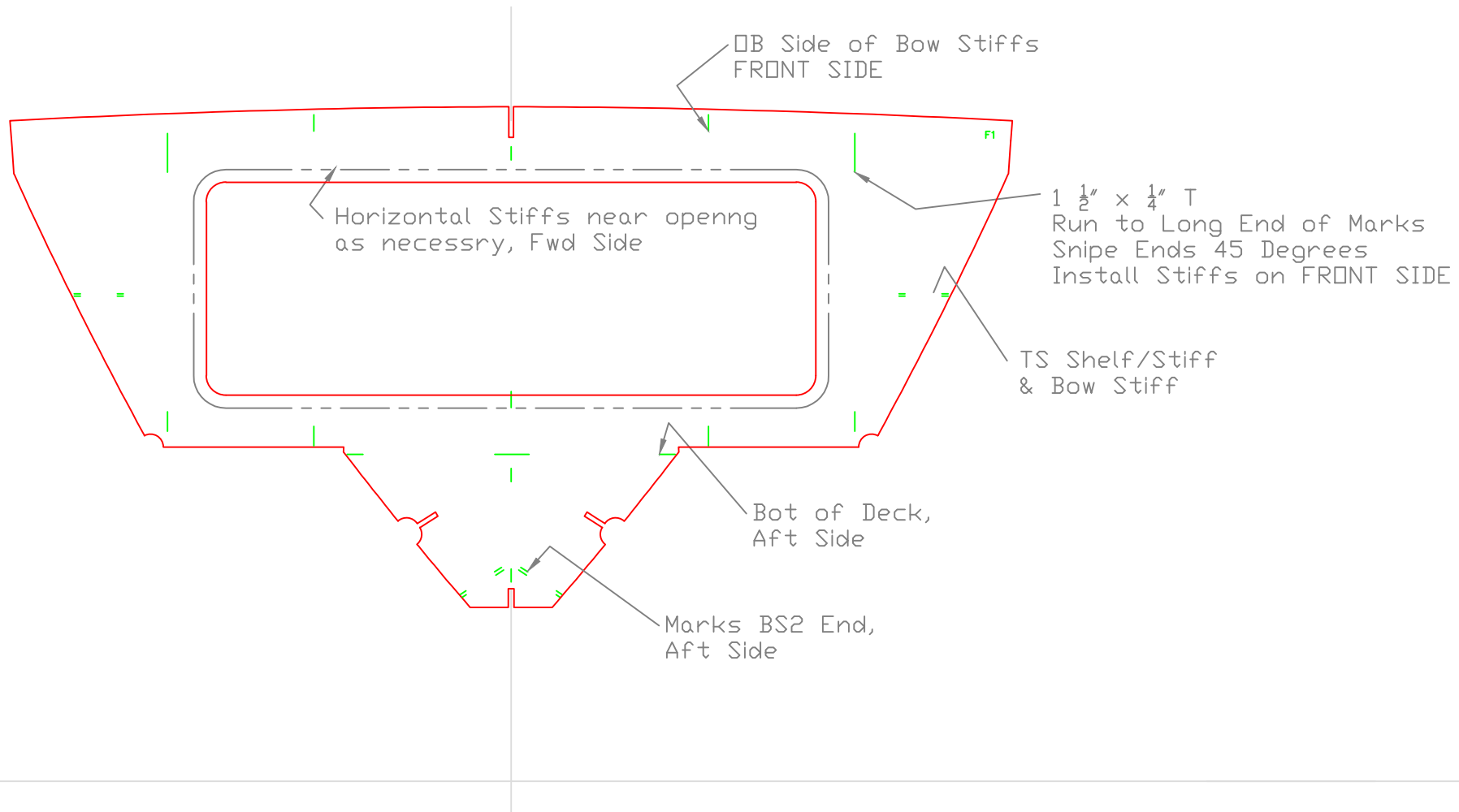
Response Marine, Inc.  
 #425, S. Portland  
 FRAME DIMENSIONS

8/1/12


Inches- sixteenths					
A	B	C	D	E	

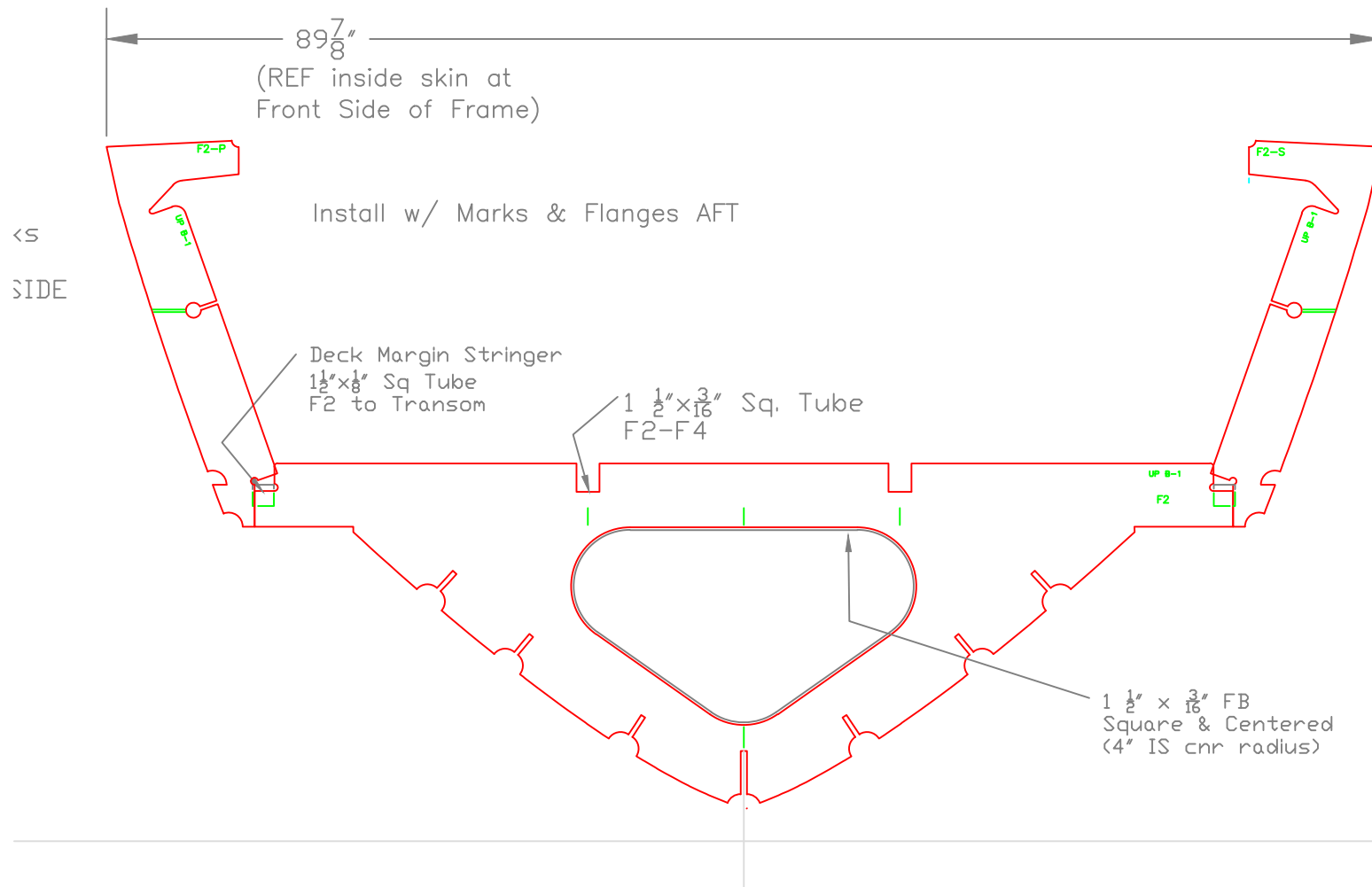
F1	
F2	
F3	
F4	
F5	
F6	
F7	

FRAME DIMENSIONS		
S. Portland 24'X8'		
SCALE NONE	DES/DWN WAL	DATE 8/1/12
Response Marine, Inc.		SHEET
Newburyport, MA, www.responsemarine.com		DWG NO. 425-F-R



FRAME 1		
S. Portland 24'X8'		
SCALE 1" = 1'	DES/DWN WAL	DATE 8/19/12
<b>Response Marine, Inc.</b> Newburyport, MA, <a href="http://www.responsemarine.com">www.responsemarine.com</a>		SHEET DWG NO. 425-F-1

REV.	DESCRIPTION

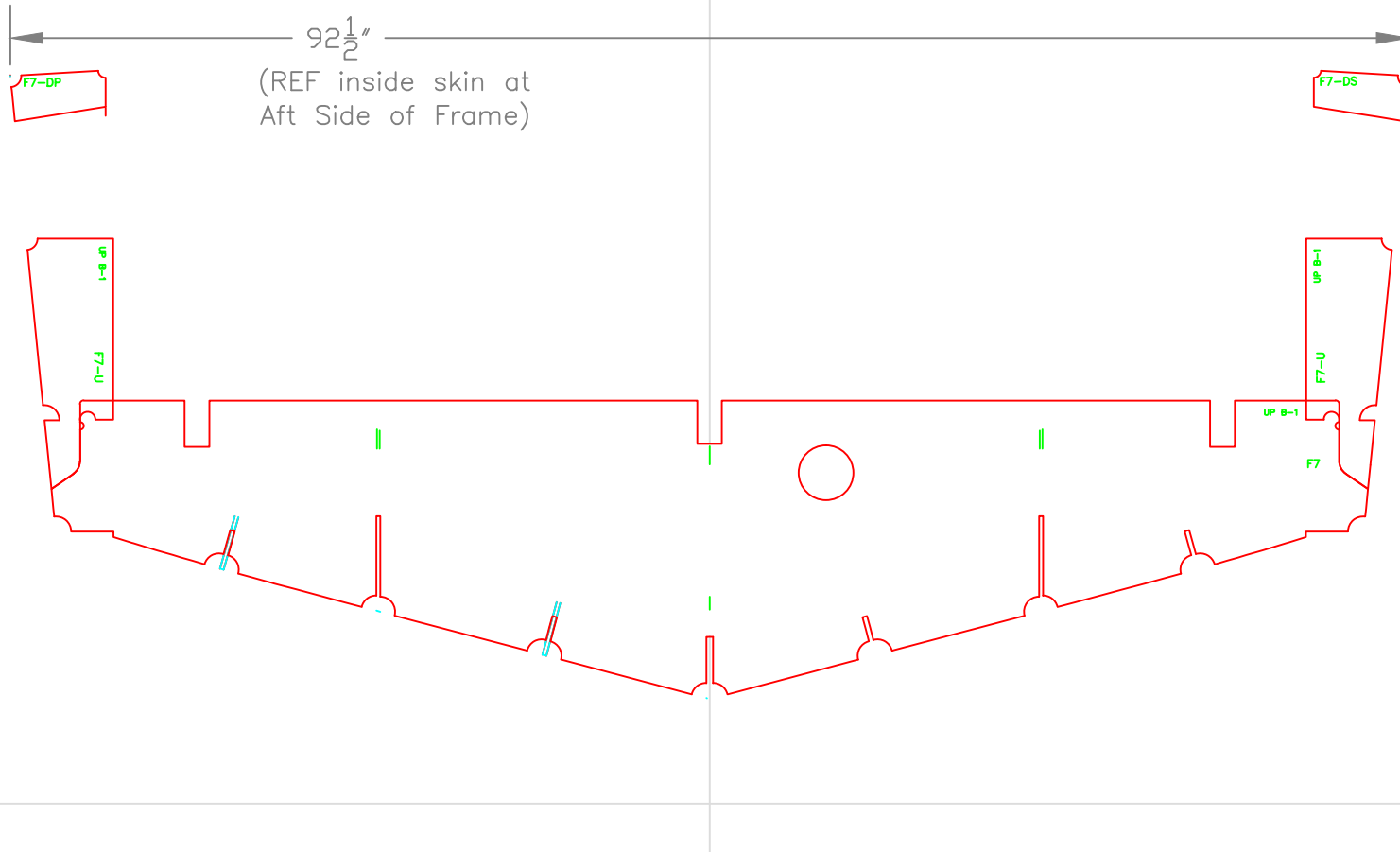


FRAME 2  
S. Portland 24'X8'

SCALE 1" = 1'	DES/DWN WAL	DATE 8/19/12
------------------	----------------	-----------------

<b>Response Marine, Inc.</b> Newburyport, MA, <a href="http://www.responsemarine.com">www.responsemarine.com</a>		SHEET DWG NO. 425-F-2
---	--	-----------------------------

REV.	DESCRIPTION



FRAME 7		
S. Portland 24'X8'		
SCALE 1" = 1'	DES/DWN WAL	DATE 8/19/12
<b>Response Marine, Inc.</b> Newburyport, MA, <a href="http://www.responsemarine.com">www.responsemarine.com</a>		SHEET DWG NO. 425-F-7

REV.	DESCRIPTION