

F5 F4 F3 F2 F1

Bilge Skegs, 3/4"X4"X39"  
24" off CL

WTBHD

WTBHD

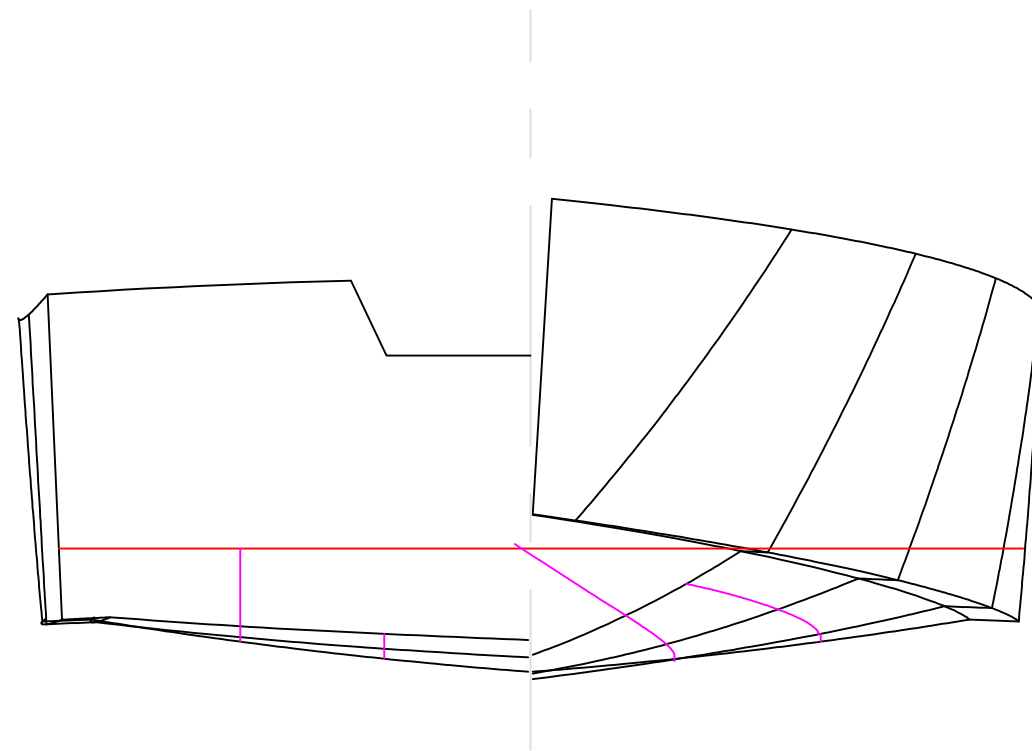
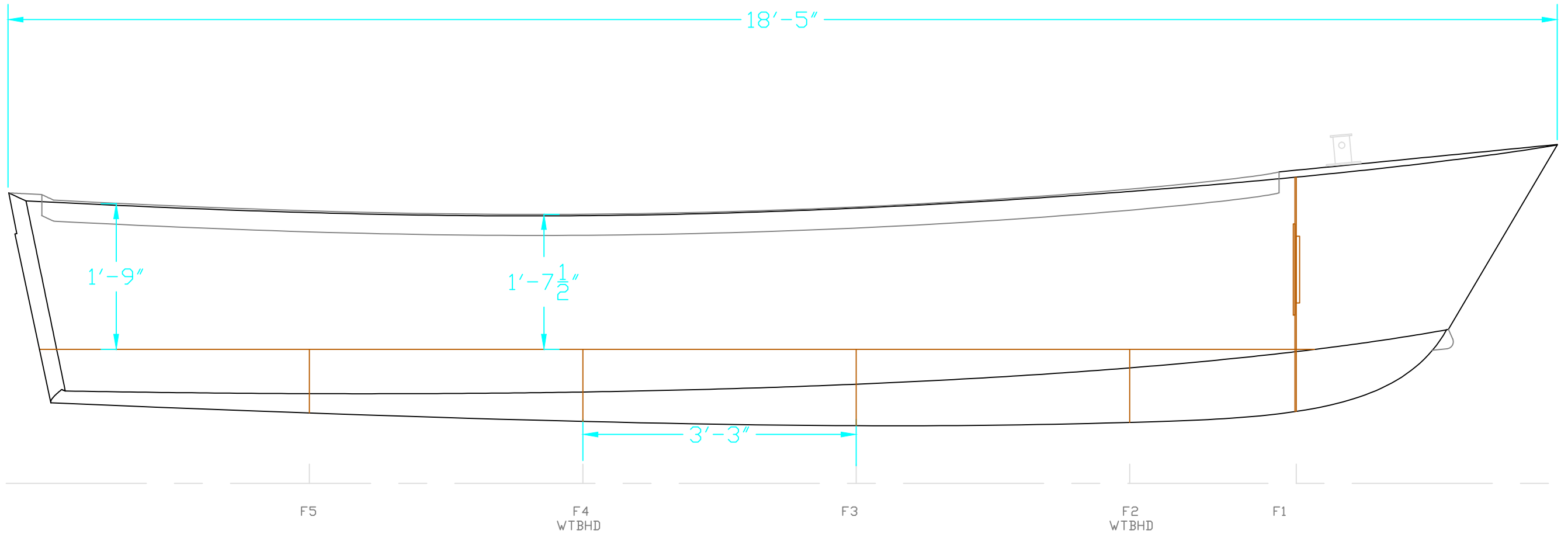
6'

7'-1 1/2"

**Design/Outfit for Commercial Use Only**

REV.	DESCRIPTION

18.5' x 7 2' Work Skiff		
Outboard Views		
SCALE 1/2" = 1'	DES/DWN WAL	DATE 1/9/17
Response Marine, Inc.		SHEET
Newburyport, MA, www.responsemarine.com		DWG NO. 550-1



**Design/Outfit for Commercial Use Only**

REV.	DESCRIPTION

18.5' x 7'2" Work Skiff		
Inboard Pro & Body Plan		
SCALE 3/4" = 1'	DES/DWN WAL	DATE 1/9/17
Response Marine, Inc.		SHEET
Newburyport, MA, www.responsemarine.com		DWG NO. 550-2