

Waterlines:
 A- Base Boat, Dockside
 B- A+ 4 Crew
 C- B+ 1,000# Tumbler Gear
 D- C+ 2,000# Oysters

D, 7,700# @ 11.4'
 C, 5,700# @ 12.3'
 B, 4,700# @ 13.3'
 A, 4,250# @ 13.1'

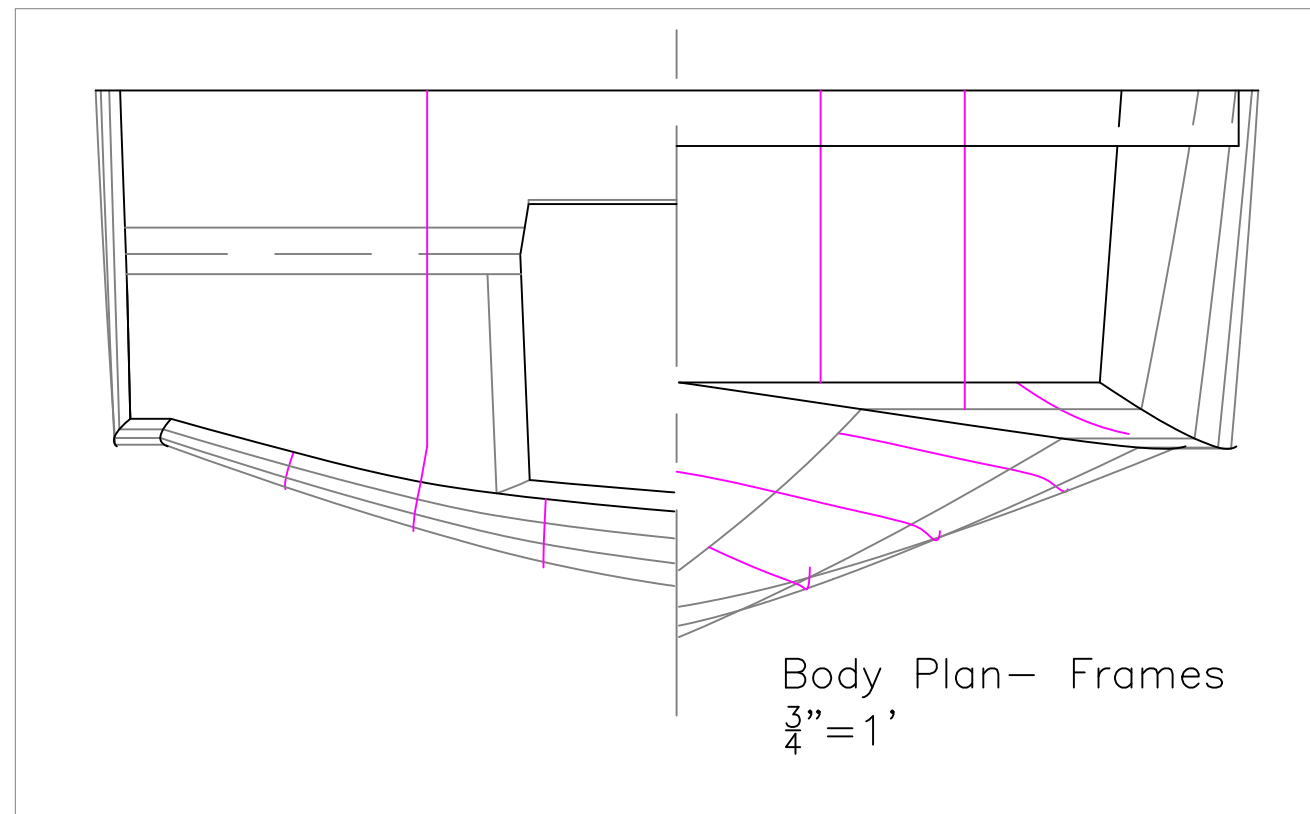
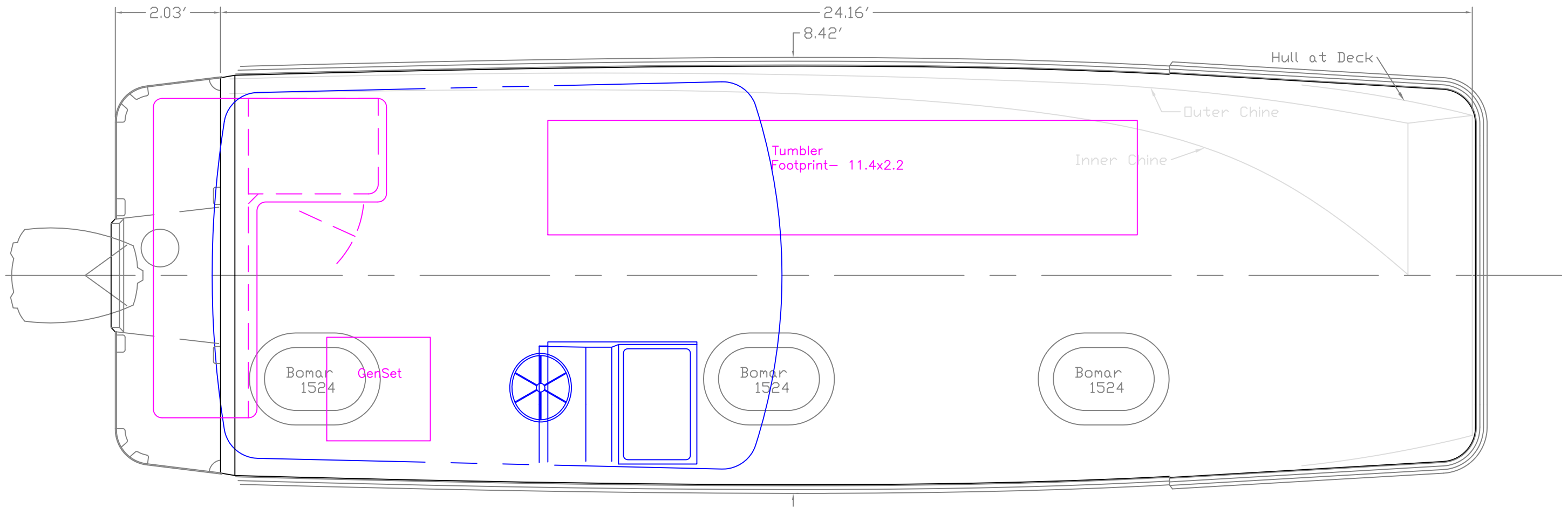
OUTBOARD PROFILE

24' Flush Deck V
 For: White Metal Welding

SCALE 1/2" = 1'	DES/DWN WAL	DATE 10/17/16
--------------------	----------------	------------------

Response Marine, Inc.	SHEET
Newburyport, MA, www.responsemarine.com	DWG NO. 538-1

REV.	DESCRIPTION



OUTBOARD PLAN & BODY PLAN

24' Flush Deck V		
For: White Metal Welding		
SCALE 1/2" = 1'	DES/DWN WAL	DATE 10/17/16
Response Marine, Inc.		SHEET
Newburyport, MA, www.responsemarine.com		DWG NO. 538-2

REV.	DESCRIPTION