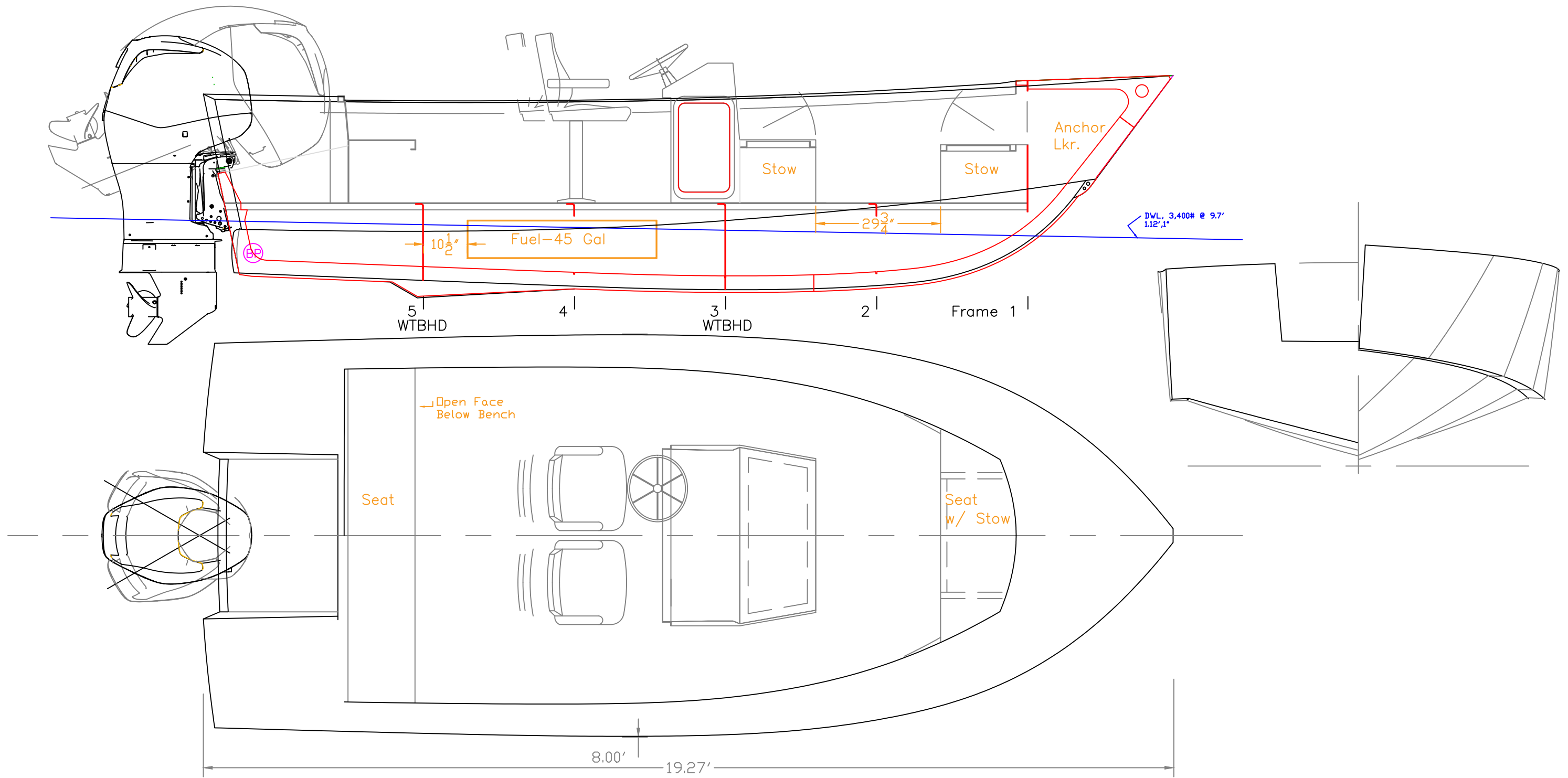


OB Profile on WL

19' x 8' SKIFF		
For: Bill Goveny / Polaris		
SCALE 1/2" = 1'	DES/DWN WAL	DATE 3/7/18
Response Marine, Inc. Newburyport, MA, www.responsemarine.com		SHEET DWG NO. 574-1

REV.	DESCRIPTION



IB Profile, Plan & Body Plan

19' x 8' SKIFF		
For: Bill Goveny / Polaris		
SCALE 1/2" = 1'	DES/DWN WAL	DATE 3/7/10
Response Marine, Inc. Newburyport, MA, www.responsemarine.com		SHEET DWG NO. 574-2

REV.	DESCRIPTION

DRAWING LIST

Design	Dwg	Description	Customer	Date
Response Marine, Inc. Design #574				
Polaris/Bill Goveny, 19'x8' Skiff				
Rev. 3/7/18				
	574 -1	Outboard Profile		3/7/18
	-2	Inboard Profile & Body Plan		3/7/18
	2-1	Keel Layout		3/7/18
	2-2	Bottom Layout		3/7/18
	2-3	Side Layout		3/7/18
	2-4	Cockpit Deck		3/7/18
	2-5	Anchor Locker Bottom		3/7/18
	2-6	Transom		3/7/18
	2-7	Side Decks		3/7/18
	2-8	Transom Bench & Splashwell		3/7/18
	2-9	Sheer Width Dimensions		3/7/18
	2-10	Forward Bench/Locker		3/7/18
	3-1	Fuel Tank		3/7/18
	4-1	Console		3/7/18
	4-2	Console Seat Hatch		3/7/18
	B-1	Flange "B1" Details		3/7/18
	C-1	Typical Bottom Joints		3/7/18
	F1	Frame 1		3/7/18
	F2	Frame 2		3/7/18
	F2D	Frame 2- Dimensions		3/7/18
	F3	Frame 3		3/7/18
	F3D	Frame 3- Dimensions		3/7/18
	F4	Frame 4		3/7/18
	F5	Frame 5		3/7/18

Response Marine,

NC Parts for #574, 19' Skiff
File: RMIdes\Viking\Viking 22\Deriv\574 Polaris 19
Revised: 3/6/18

Print Date: 3/7/18

3/16" 5052 Parts

<u>Part #</u>	<u>Pieces</u>	<u>Description</u>	<u>Bending</u>	<u>Bending Info</u>
B-AT	1	Bench, Fwd Top		
B-B	1	Bench Aft	Y	On Marks, Tight Radius
C-1P	1	Console Side, Port	Y	On Marks, Tight Radius
C-1S	1	Console Side, Stbd	Y	On Marks, Tight Radius
C-2	1	Console Top	Y	On Marks, Tight Radius
C-3	1	Console Back	Y	On Marks, Tight Radius
C-4	1	Console Front		
C-5	1	Console Seat Hatch	Y	On Marks, Tight Radius
FT-1	2	Fuel Tank Ends		
FT-2	1	Fuel Tank Body	Y	On Marks, Tight Radius
FT-3	1	Fuel Tank, Transverse Baffle		
FT-4	1	Fuel Tank, Long'l Baffle		
FT-5	1	Fuel Tank Top		
J-T	2	Jig, Transom		
SP-F	1	Splashwell Front		
SP-P	1	Splashwell Side, Port	Y	On Marks, Tight Radius
SP-S	1	Splashwell Side, Stbd	Y	On Marks, Tight Radius

19 Total Pieces (3/16" 5052")

NOTE: When removing parts from pallet, 3/16" 5052 Parts need to be isolated
& marked for tighter radius bends than the 5086.

3/16" 5083/86 Parts

<u>Part #</u>	<u>Pieces</u>	<u>Description</u>	<u>Bending</u>	<u>Bending Info</u>
ALB	1	Anchor Locker Bottom		
B-AH	1	Bench, Fwd, Hatch	Y	On Marks
B-AV	1	Bench, Fwd, Vertical face	Y	Flange B1
B-P	1	Bottom Plate, Port		
B-S	1	Bottom Plate, Stbd		
DB-AP	1	Deck Body, F1-F3, Port		
DB-AS	1	Deck Body, F1-F3, Stbd		
DB-B	1	Deck Body, F3-F5		
DB-C	1	Deck Body, F5-Tran		
DM-P	1	Deck Margin, F3-Tran, Port		
DM-S	1	Deck Margin, F3-Tran, Stbd		
DP-5	3	Deck Plate Cover		
DP-5R	3	Deck Plate Ring		
F1	1	Frame 1		
F2	1	Frame 2, Main Lower	Y	Flange B1
F2-P	1	Frame 2, Port		
F2-S	1	Frame 2, Stbd		
F3	1	Frame 3, Main Lower	Y	Flange B1
F3-P	1	Frame 3, Port	Y	Flange B1

F3-S	1	Frame 3, Stbd	Y	Flange B1
F4	1	Frame 4	Y	Flange B1
F5	1	Frame 5	Y	Flange B1
FDC	1	ForeDeck Coaming		
SDC-P	1	Side Deck Coaming, Port		
SDC-S	1	Side Deck Coaming, Stbd		
SD-P	1	Side Deck, Port		
SD-S	1	Side Deck, Stbd		
SF	1	Stem Flat		
TSL-AP	1	Topside Stringer, Fwd Port, F1-F3	Y	Flange B1
TSL-AS	1	Topside Stringer, Fwd Stbd, F1-F3	Y	Flange B1
TSL-BP	1	Topside Stringer, Aft Port, F3-Transom	Y	Flange B1
TSL-BS	1	Topside Stringer, Aft Stbd, F3-Transom	Y	Flange B1
TSL-CP	1	Topside Stringer, Transom, Port		
TSL-CS	1	Topside Stringer, Transom, Stbd		
TS-P	1	Topsides, Port		
TS-S	1	Topsides, Stbd		
	40	Total Pieces (3/16", 5083/86)		

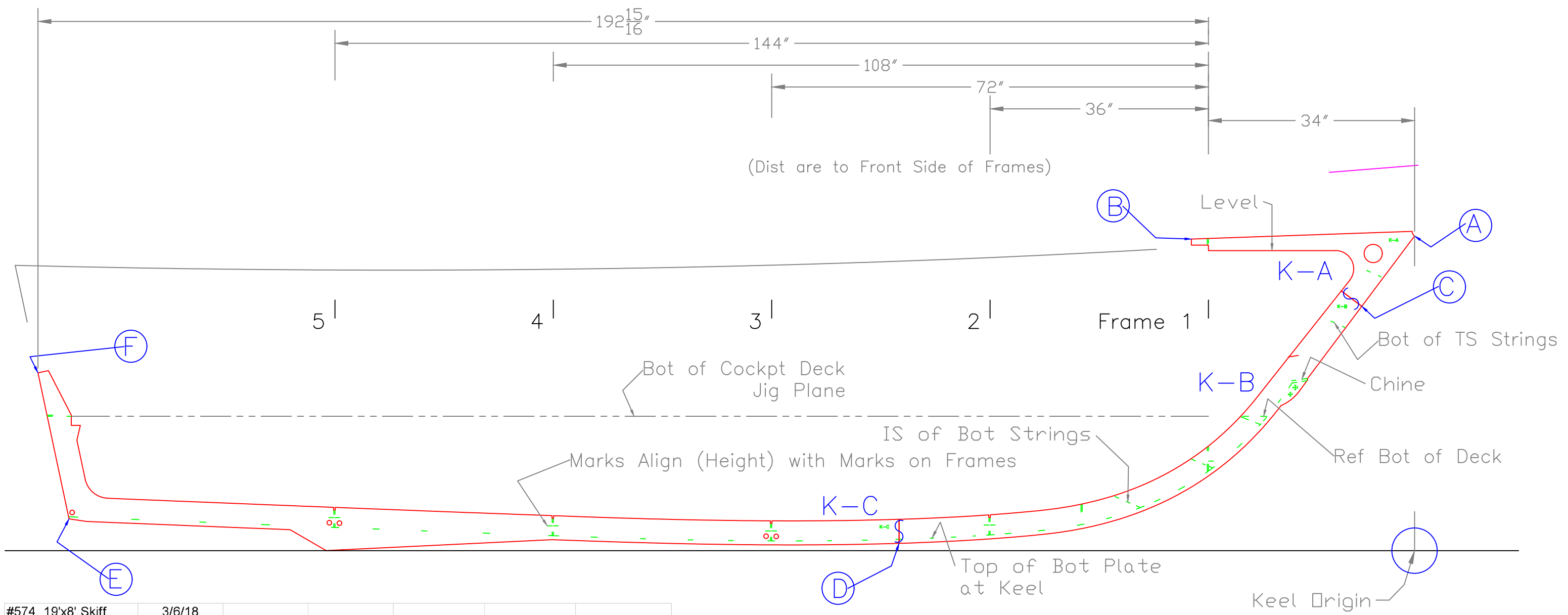
1/4" 5083/86 Parts

<u>Part #</u>	<u>Pieces</u>	<u>Description</u>
BS1-P	1	Bottom Stringer 1, Port
BS1-S	1	Bottom Stringer 1, Stbd
BS1-T	2	Transom Knee at BS1
BS2-P	1	Bottom Stringer 2, Port
BS2-S	1	Bottom Stringer 2, Stbd
BS3-P	1	Bottom Stringer 3, Port
BS3-S	1	Bottom Stringer 3, Stbd
ED-T	2	Engine Doublers at Transom
TR	1	Transom
TSL-F1P	1	Topside Stringer #1, Lower Port, F1-Stem
TSL-F1S	1	Topside Stringer #1, Lower Stbd, F1-Stem
TSL-F2P	1	Topside Stringer #2, Upper Port, F1-Stem
TSL-F2S	1	Topside Stringer #2, Lower Stbd, F1-Stem
	15	Total Pieces (1/4")

3/8" 5083/86 Parts

<u>Part #</u>	<u>Pieces</u>	<u>Description</u>
C-AP	1	Chine, Fwd Port
C-AS	1	Chine, Fwd Stbd
C-BP	1	Chine, Aft Port
C-BS	1	Chine, Aft Stbd
K-A	1	Keel, Foredeck/Stem
K-B	1	Keel, Mid fwd
K-C	1	Keel, Aft
TL	1	Transom Lip at Engine
	8	Total Pieces (3/8")

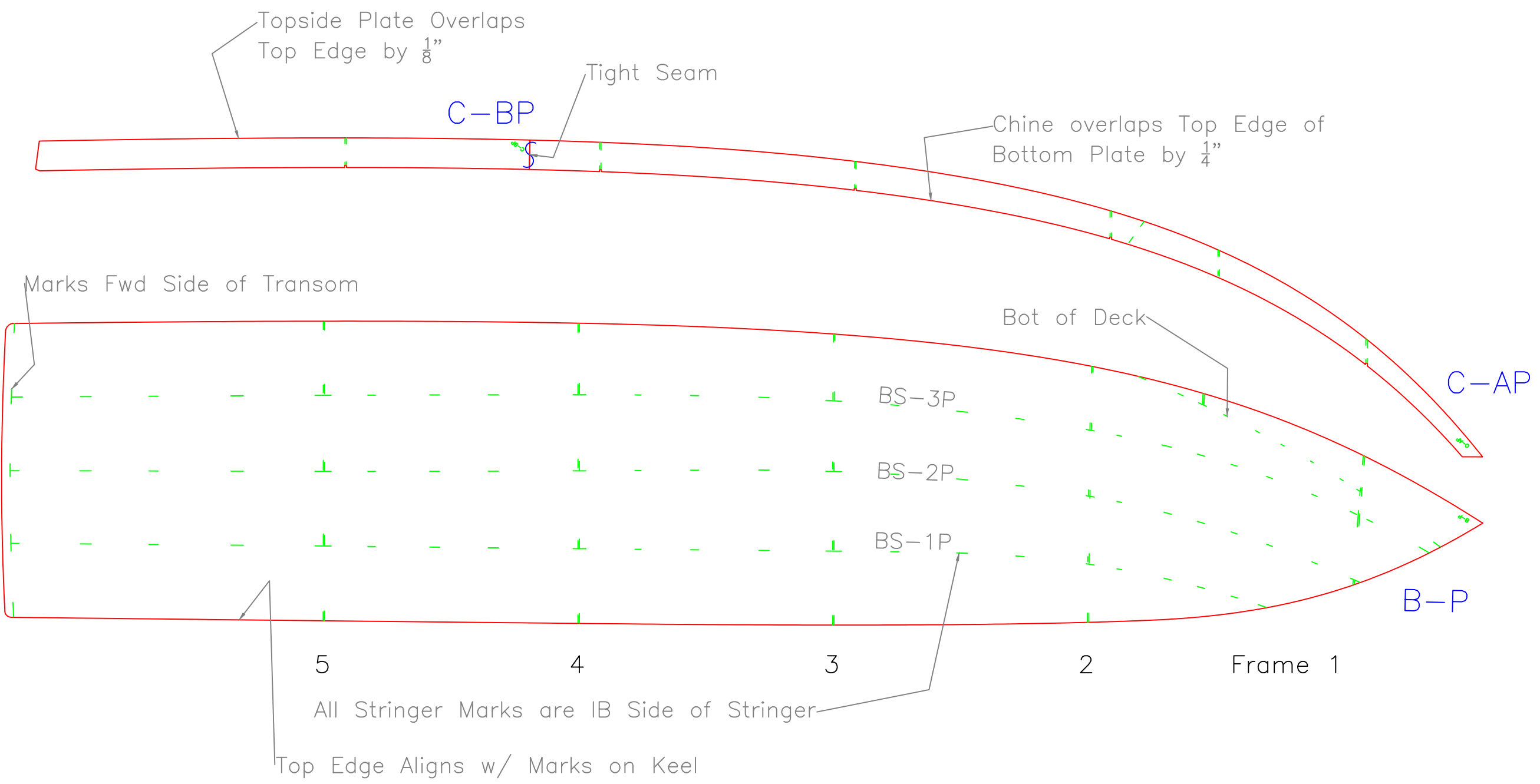
82 Total Cut Parts



#574, 19'x8' Skiff	3/6/18					
Keel Points						
	Inches- sixteenths		Feet			
	Horizontal	Vertical	Horizontal	Vertical		
A to Origin						
B to Origin						
C to Origin						
D to Origin						
E to Origin						
F to Origin						
ALIGNED (INCHES)						
	A	B	C	D	E	F
A to						
B to						
C to						
D to						
E to						

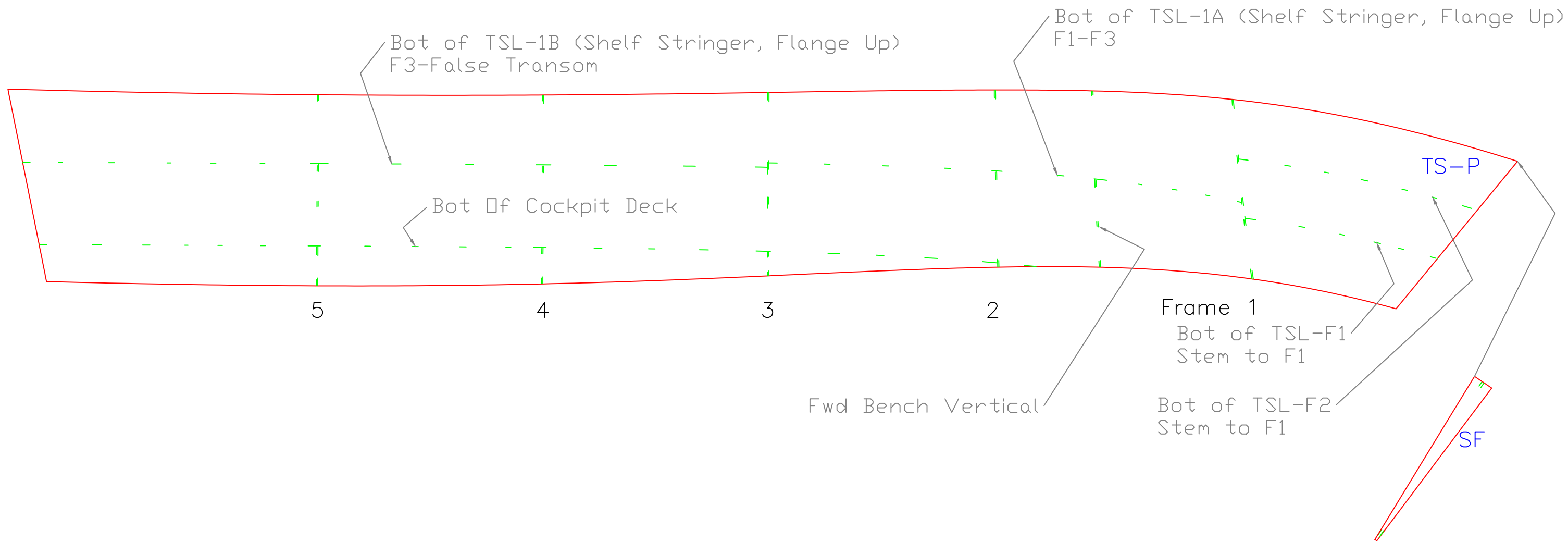
REV.	DESCRIPTION

KEEL LAYOUT		
19' x 8' SKIFF		
SCALE 3/4" = 1'	DES/DWN WAL	DATE 3/7/10
Response Marine, Inc.		SHEET
Newburyport, MA, www.responsemarine.com		DWG NO. 574-2-1



BOTTOM LAYOUT		
19' x 8' SKIFF		
SCALE 3/4" = 1'	DES/DWN WAL	DATE 3/7/10
Response Marine, Inc. Newburyport, MA, www.responsemarine.com		SHEET DWG NO. 574-2-2

REV.	DESCRIPTION



SIDE LAYOUT		
19' x 8' SKIFF		
SCALE 3/4" = 1'	DES/DWN WAL	DATE 3/7/10
Response Marine, Inc. Newburyport, MA, www.responsemarine.com		SHEET DWG NO. 574-2-3

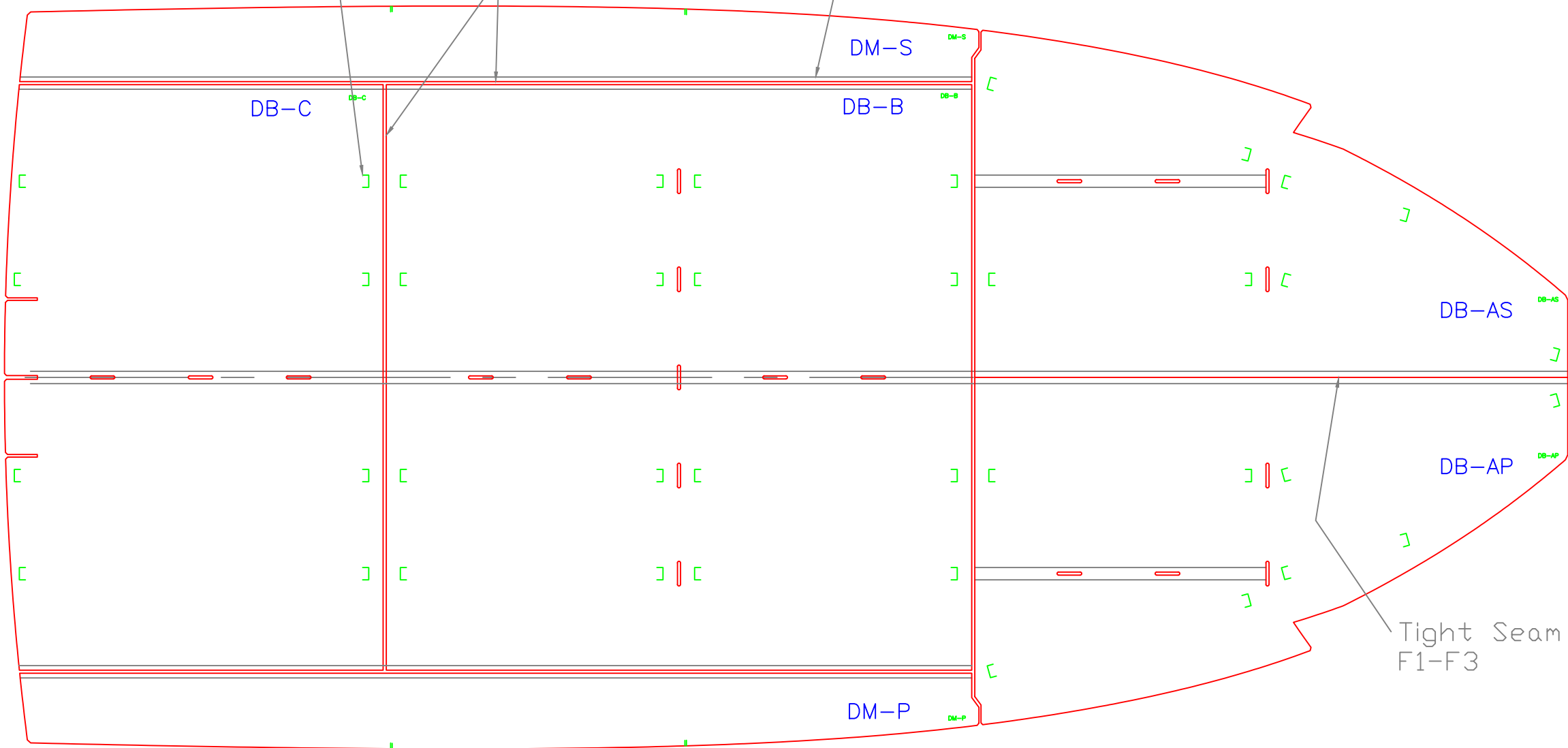
REV.	DESCRIPTION

Deck is Viewed From BELOW
 Deck Stringers are 1 1/2" x 1 1/2" x 3/16" Sq. Tube

Intercostals
 As Marked
 Length to Ends of Marks
 Snipe Ends 45°

3/8" Seams, TYP

- 1 1/2" x 3/16" Sq. Tube
- At Margins, F3-Transom
 - At 24" off CL, F2-F3
 - At CL, F1-Transom

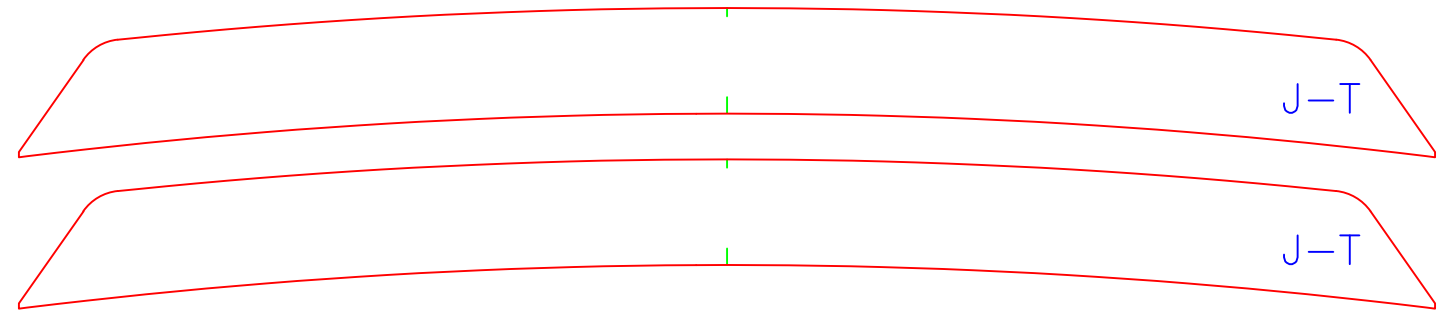


Tight Seam on CL for Trim
 F1-F3

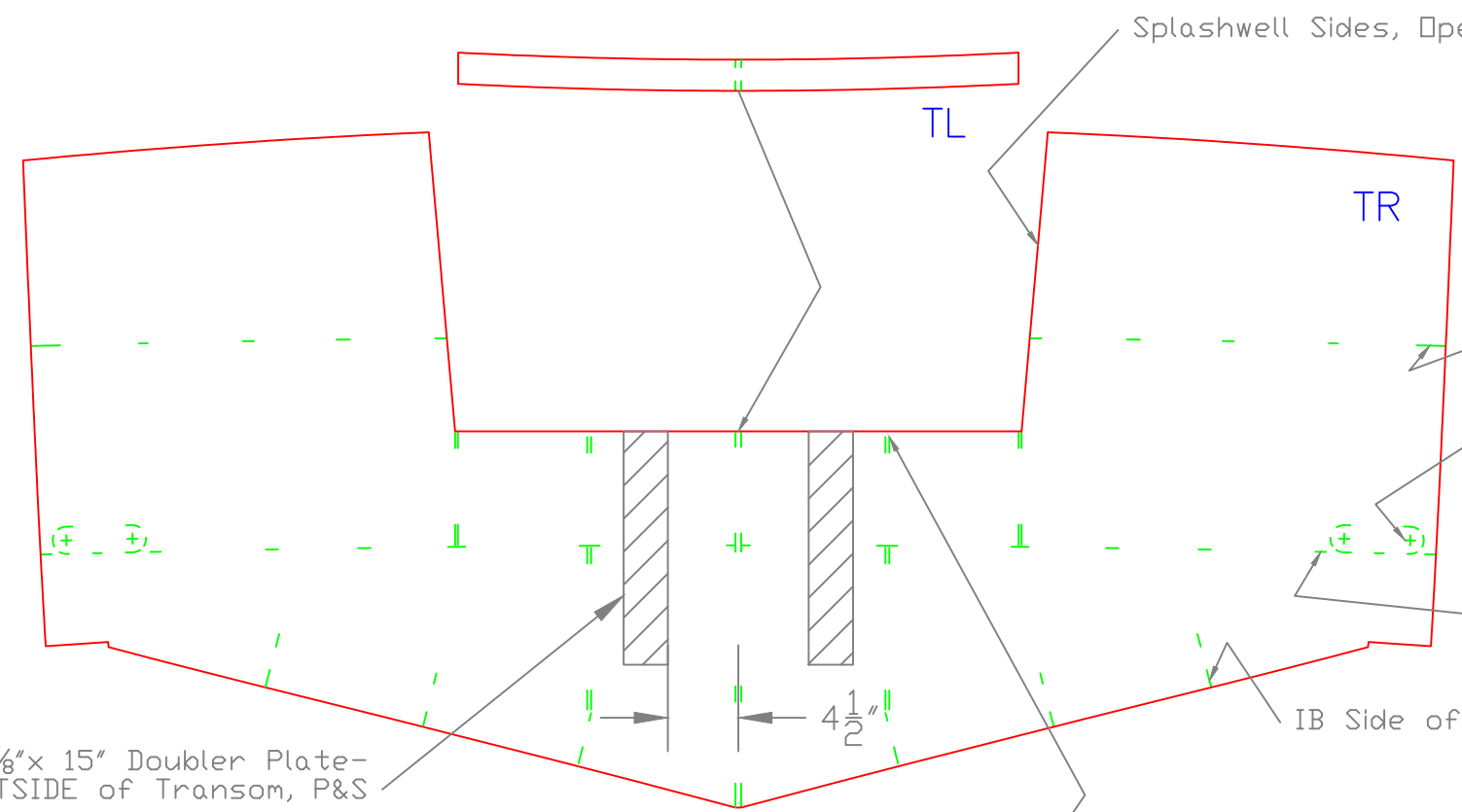
5 | 4 | 3 | 2 | Frame 1

REV.	DESCRIPTION

COCKPIT DECK		
19' x 8' SKIFF		
SCALE 3/4" = 1'	DES/DWN WAL	DATE 3/7/10
Response Marine, Inc. Newburyport, MA, www.responsemarine.com		SHEET DWG NO. 574-2-4



Transom Jigs
 (2) Identical Parts
 Fit Outside of transom, Square
 off Transom



Splashwell Sides, Open Corner

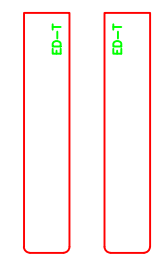
Bot of TSL-1B
 TSL-1C runs across transom
 Butts at Side Stringer & Splashwell Side

Cut Marks for SeaStop Scuppers
 w/ Shims
 Alternate Scuppers would be 3" Pipe Collar
 fit w/ Salisbury Flap

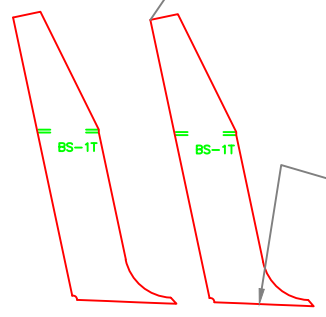
Bot of Cockpit Deck

IB Side of Bottom Stringers

3/8" x 2 7/8" x 15" Doubler Plate-
 (ED-T) on OUTSIDE of Transom, P&S



ED-T



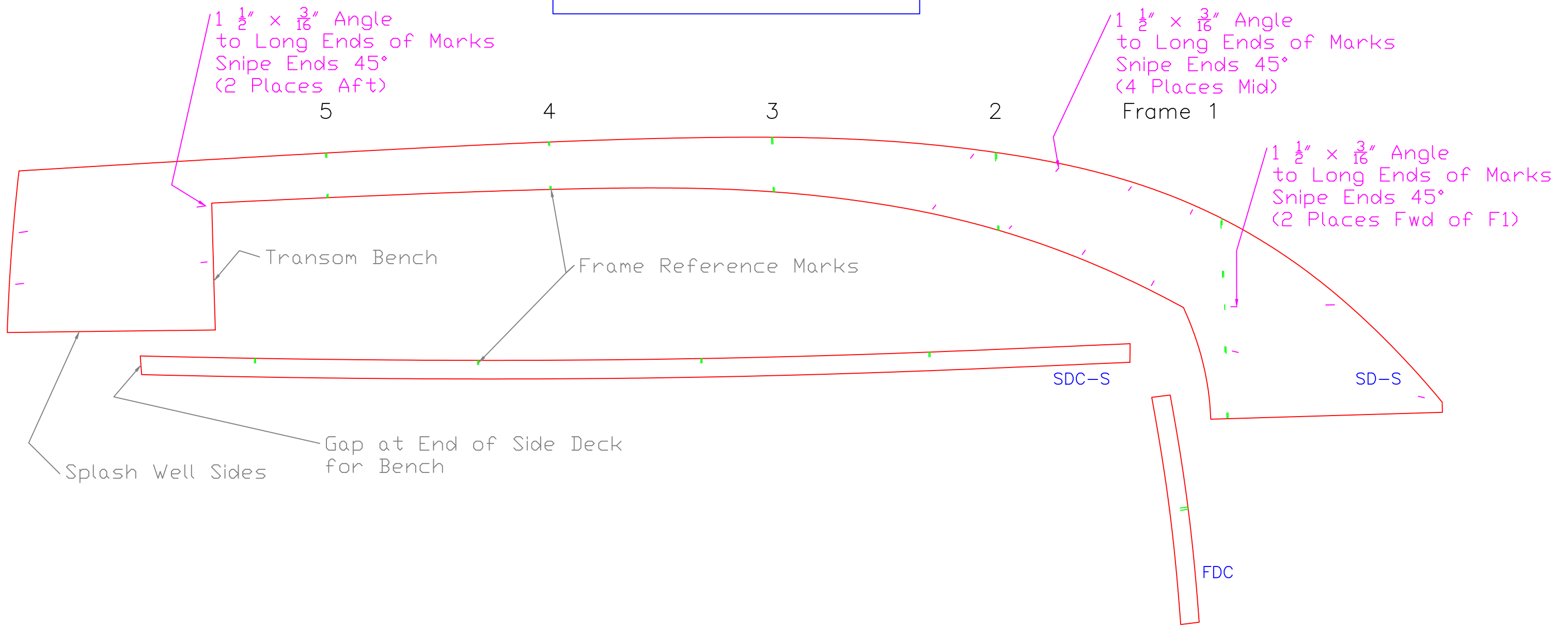
Butt on Top of BS-1

BS-1T

TRANSOM		
19' x 8' SKIFF		
SCALE 1" = 1'	DES/DWN WAL	DATE 3/7/10
Response Marine, Inc. Newburyport, MA, www.responsemarine.com		SHEET DWG NO. 574-2-6

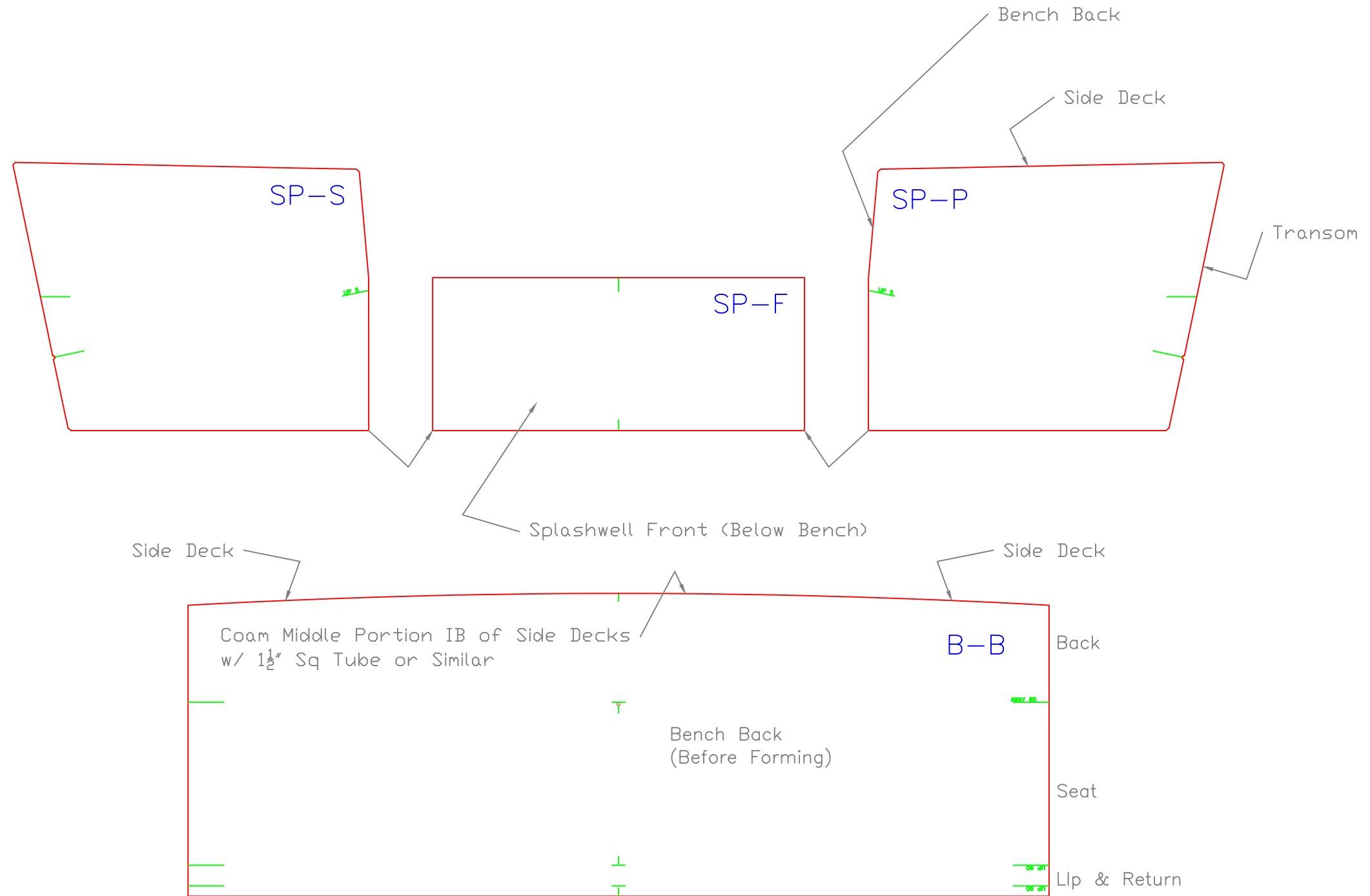
REV.	DESCRIPTION

Deck is Viewed From BELOW



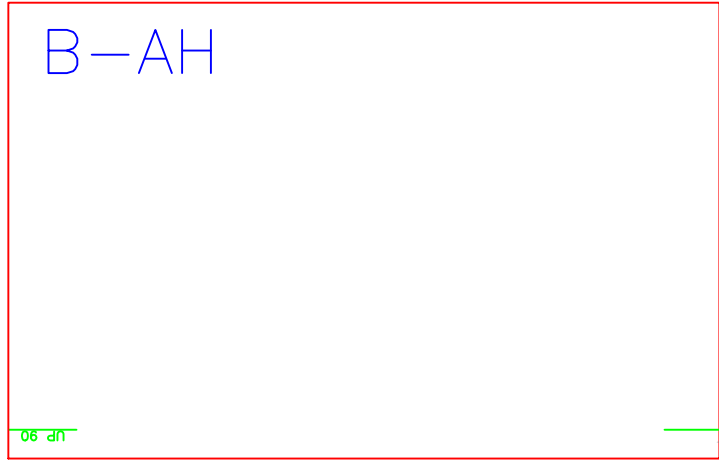
SIDE DECKS		
19' x 8' SKIFF		
SCALE 3/4" = 1'	DES/DWN WAL	DATE 3/7/10
Response Marine, Inc. Newburyport, MA, www.responsemarine.com		SHEET DWG NO. 574-2-7

REV.	DESCRIPTION



TRANSOM BENCH & SPLASHWELL

19' x 8' SKIFF		
SCALE 1" = 1'	DES/DWN WAL	DATE 3/7/10
Response Marine, Inc. Newburyport, MA, www.responsemarine.com		SHEET DWG NO. 574-2-8
REV.	DESCRIPTION	

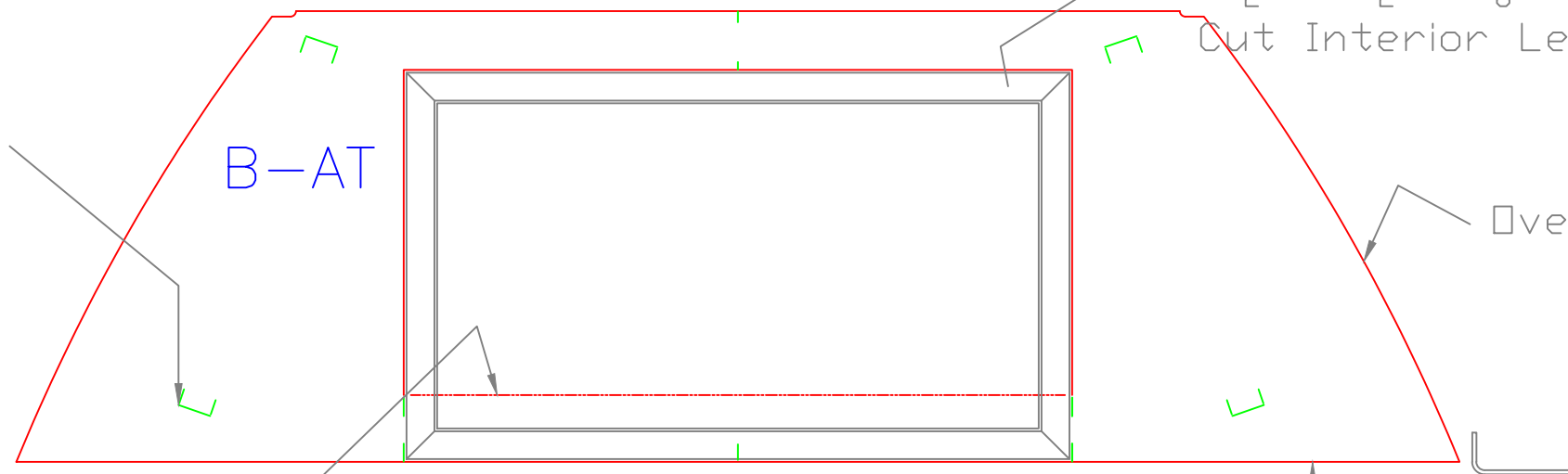


B-AH

Formed Lip at Aft End

06 in

Gutter at Fwd End & Sides
 $1\frac{1}{2}'' \times 1\frac{1}{2}'' \times \frac{1}{8}''$ Channel
 Cut Interior Leg down $\frac{3}{16}''$ for Gasket



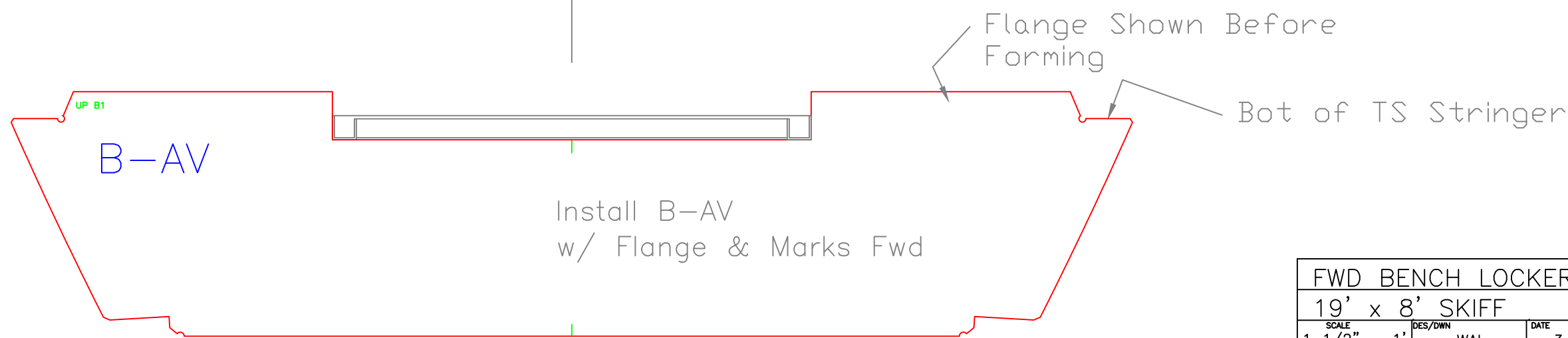
B-AT

Intercostal Stiffener
 $1\frac{1}{2}'' \times \frac{3}{16}''$ Sq Tube
 Snipe ends 45°

Overlaps on TS Stringer

Cut Away CL Strip of Bench Top
 for Gutter Install

Overlaps on Flange of B-AV



B-AV

Flange Shown Before
 Forming

Bot of TS Stringer

Install B-AV
 w/ Flange & Marks Fwd

FWD BENCH LOCKER		
19' x 8' SKIFF		
SCALE 1 1/2" = 1'	DES/DWN WAL	DATE 3/7/10
Response Marine, Inc. Newburyport, MA, www.responsemarine.com		SHEET DWG NO. 574-2-10

REV.	DESCRIPTION

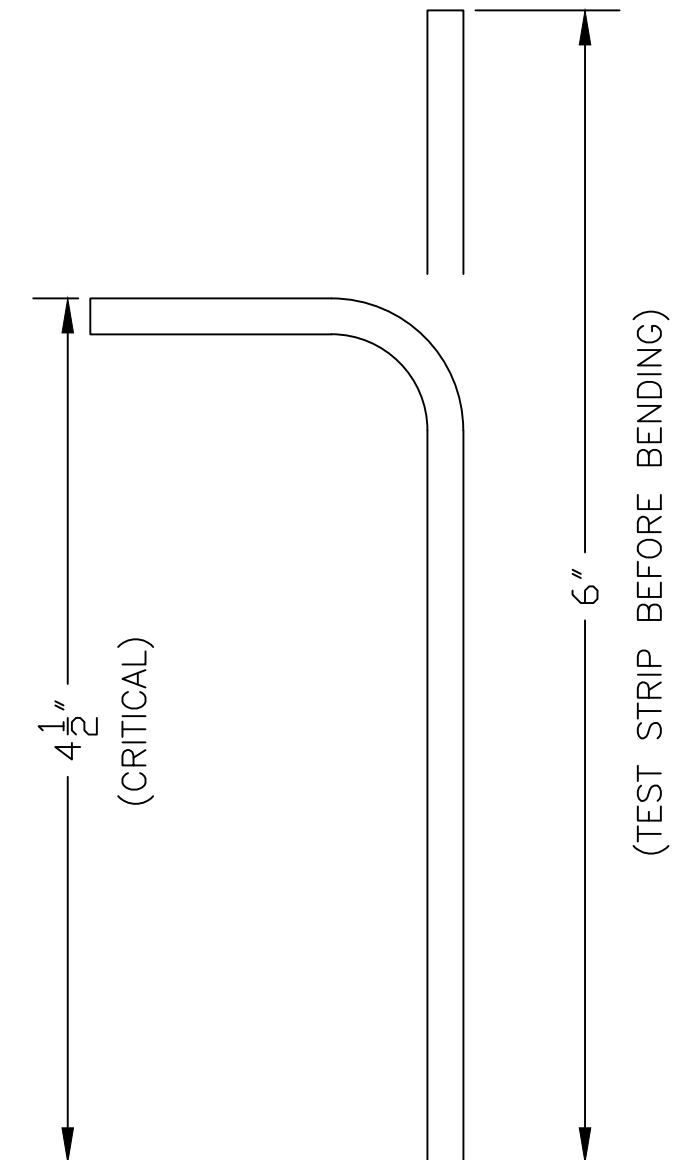
ch

STANDARD FLANGE BENDING: $\frac{3}{16}$ " 5086/83 H116 Stock

- 1) Confirm results for dimensions and cracking with test strips before bending parts.
- 2) Expected Die Radius is $\frac{3}{8}$ " ($\frac{3}{4}$ " diameter). $\frac{1}{2}$ " Radius is OK as well.
- 3) Flanges are designed for outside major flange length of $1\frac{1}{2}$ " less than flat stock length as shown.
- 4) Expected Back Gauge setting is 1.68", but confirm and adjust, based on test strip.

Parts to be flanged per this same set-up are listed at left. 11 Parts.

Part #	Pieces	Description
B-AV	1	Bench, Fwd, Vertical face
F2	1	Frame 2, Main Lower
F3	1	Frame 3, Main Lower
F3-P	1	Frame 3, Port
F3-S	1	Frame 3, Stbd
F4	1	Frame 4
F5	1	Frame 5
TSL-AP	1	Topside Stringer, Fwd Port, F1-F3
TSL-AS	1	Topside Stringer, Fwd Stbd, F1-F3
TSL-BP	1	Topside Stringer, Aft Port, F3-Transom
TSL-BS	1	Topside Stringer, Aft Stbd, F3-Transom



FLANGE "B1" DETAILS

19' x 8' SKIFF

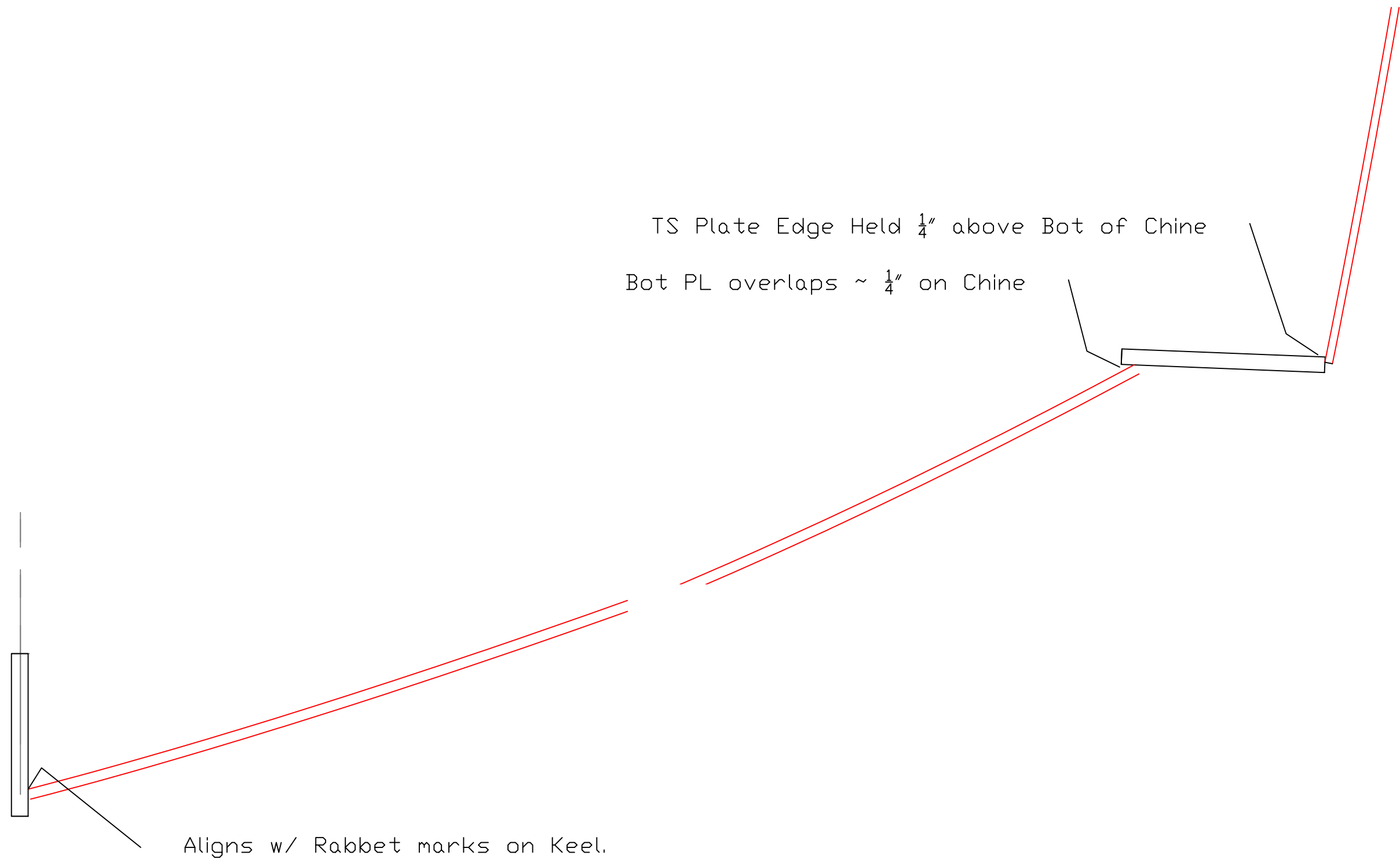
SCALE 3/4" = 1'	DES/DWN WAL	DATE 3/7/10
--------------------	----------------	----------------

SHEET	
-------	--

DWG NO. 574-B-1

REV.	DESCRIPTION

Response Marine, Inc.
Newburyport, MA, www.responsemarine.com



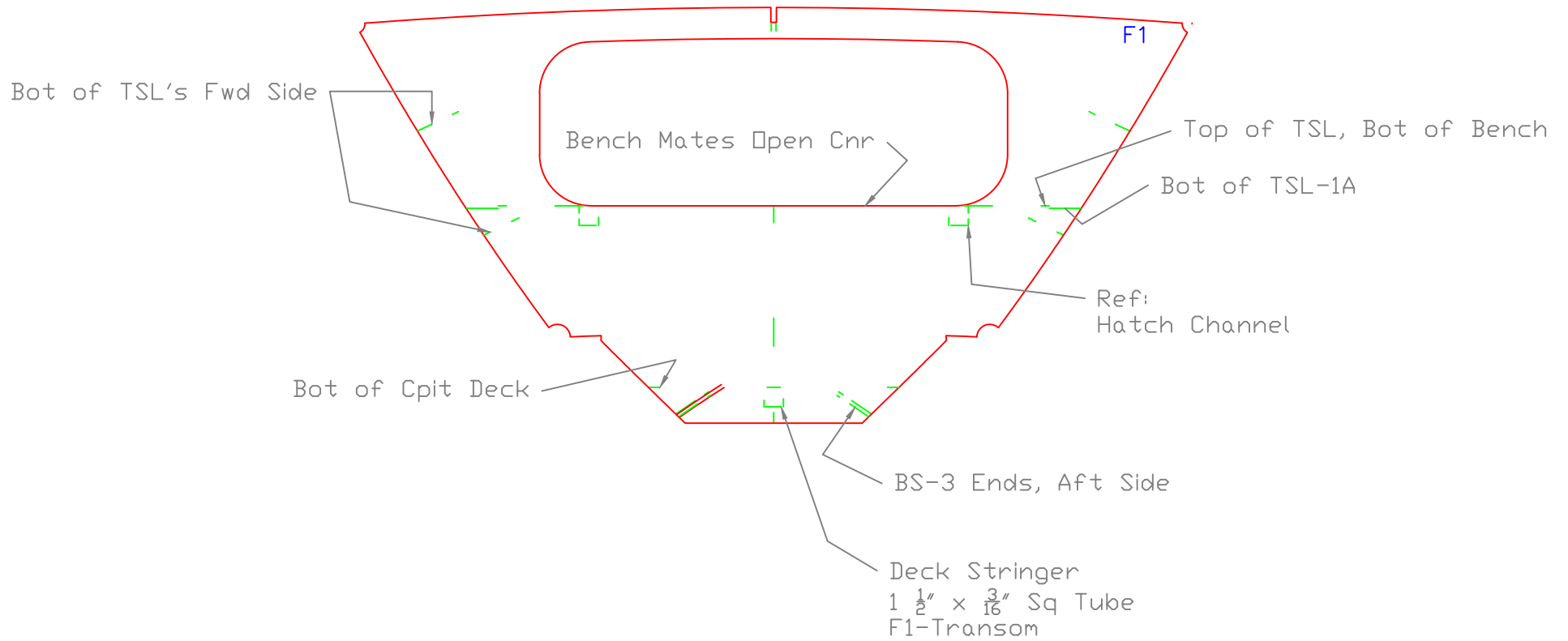
TS Plate Edge Held $\frac{1}{4}$ " above Bot of Chine
 Bot PL overlaps $\sim \frac{1}{4}$ " on Chine

Aligns w/ Rabbet marks on Keel.

TYPICAL BOTTOM JOINTS		
19' x 8' SKIFF		
SCALE 1 1/2" = 1'	DES/DWN WAL	DATE 3/7/10
Response Marine, Inc. Newburyport, MA, www.responsemarine.com		SHEET DWG NO. 574-C-1

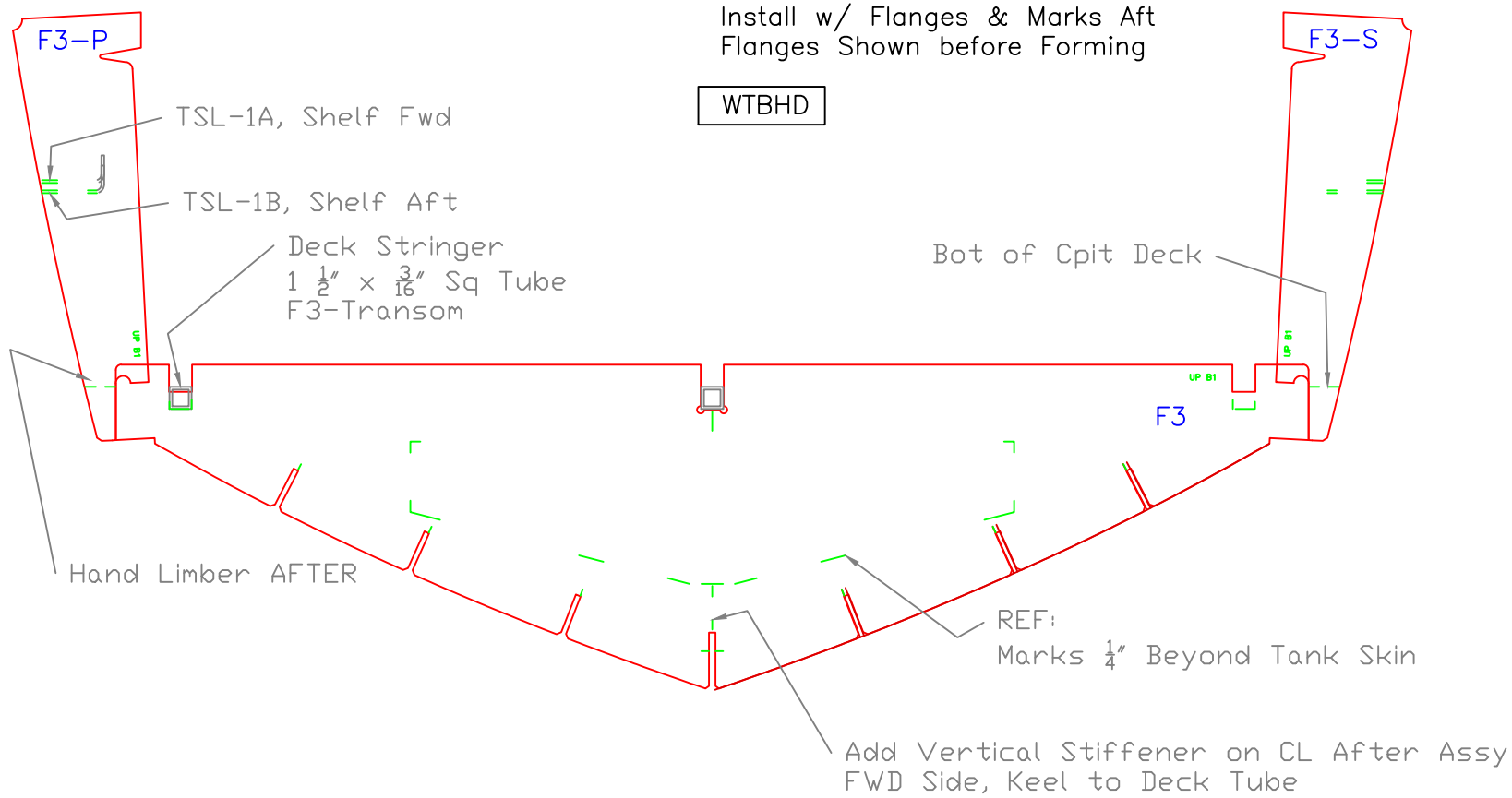
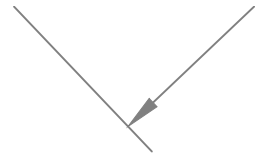
REV.	DESCRIPTION

Install Marks Aft



Frame 1		
19' x 8' SKIFF		
SCALE 1" = 1'	DES/DWN WAL	DATE 3/7/10
Response Marine, Inc.		SHEET
Newburyport, MA, www.responsemarine.com		DWG NO. 574-F1

REV.	DESCRIPTION



Install w/ Flanges & Marks Aft
Flanges Shown before Forming

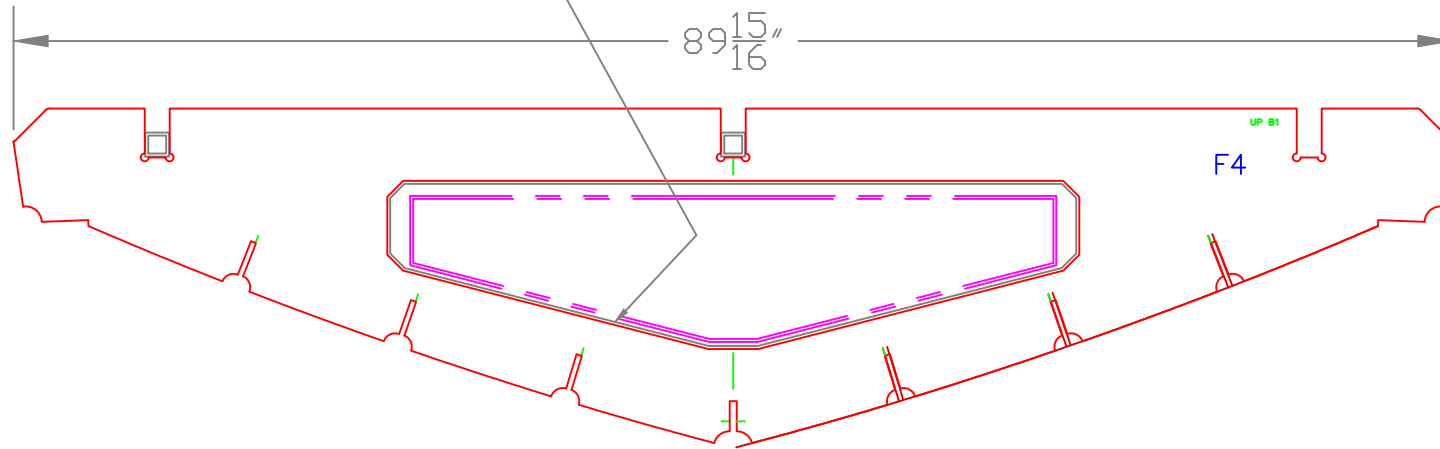
WTBHD

Frame 3, WTBHD		
19' x 8' SKIFF		
SCALE 1" = 1'	DES/DWN WAL	DATE 3/7/10
Response Marine, Inc. Newburyport, MA, www.responsemarine.com		SHEET DWG NO. 574-F3

REV.	DESCRIPTION

Install w/ Flange & Marks Aft
Flange Shown before Forming

Flange Perimeter w/ $1\frac{1}{2}'' \times \frac{3}{16}''$ FB,
Centered
Bottom Flange is $\frac{1}{4}''$ Beyond Tank Skin



Frame 4		
19' x 8' SKIFF		
SCALE 1" = 1'	DES/DWN WAL	DATE 3/7/10
Response Marine, Inc. Newburyport, MA, www.responsemarine.com		SHEET DWG NO. 574-F4

REV.	DESCRIPTION