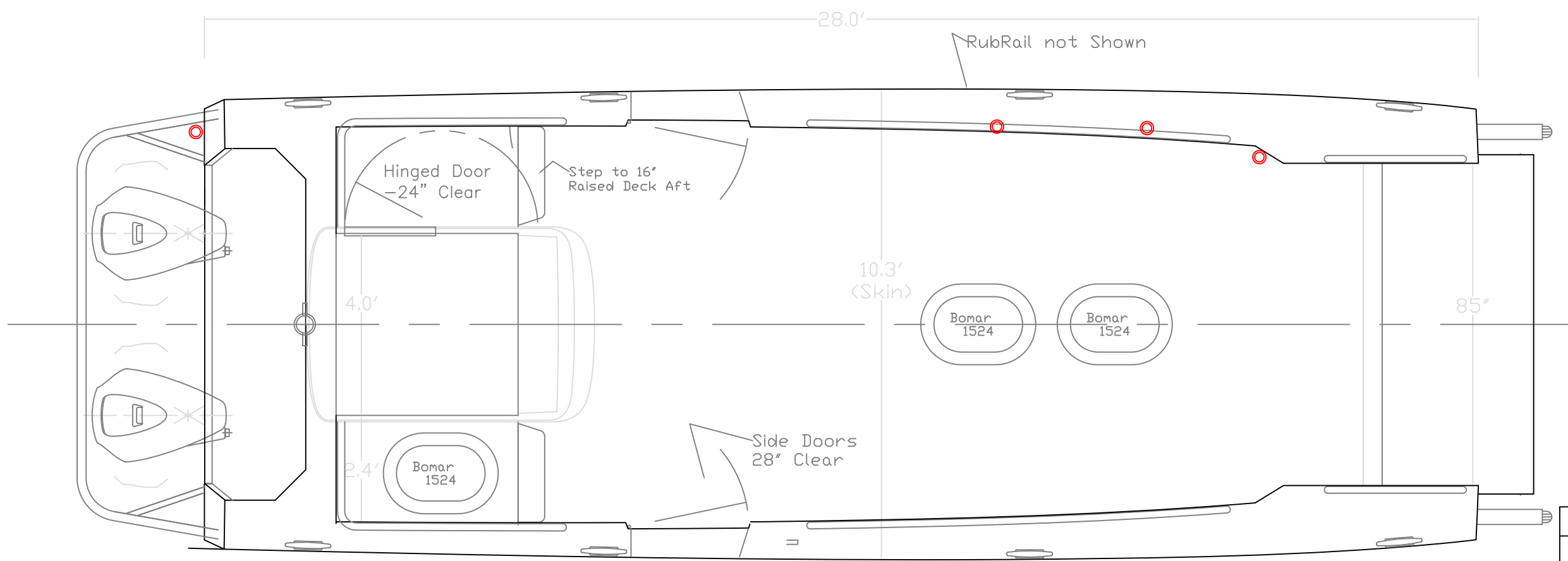
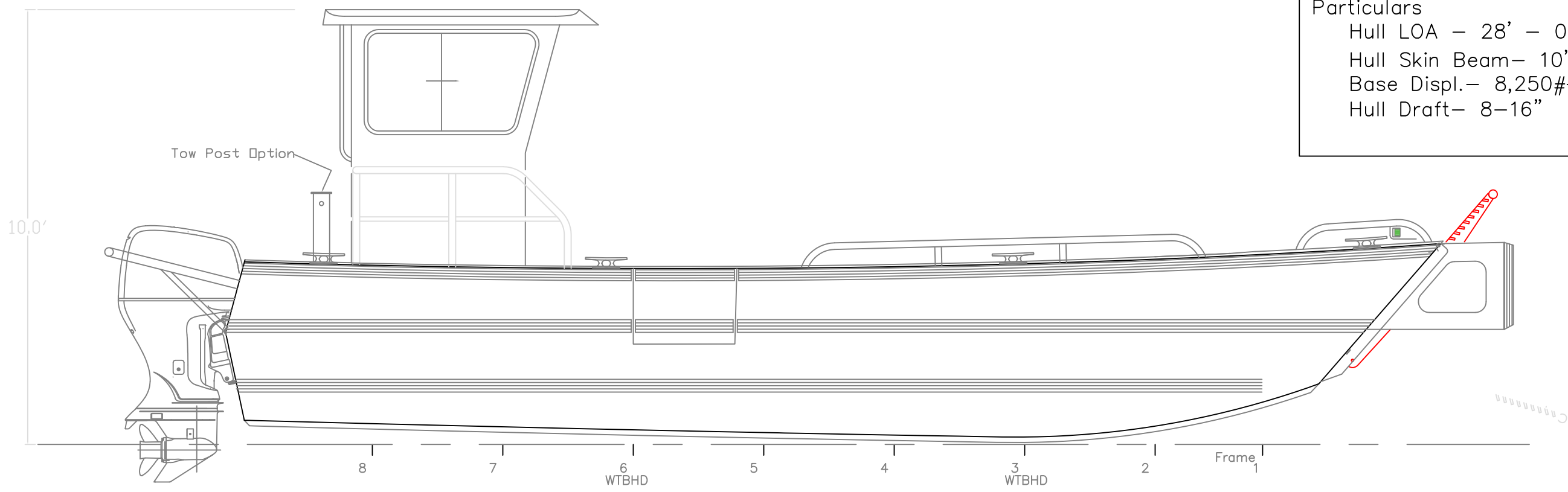


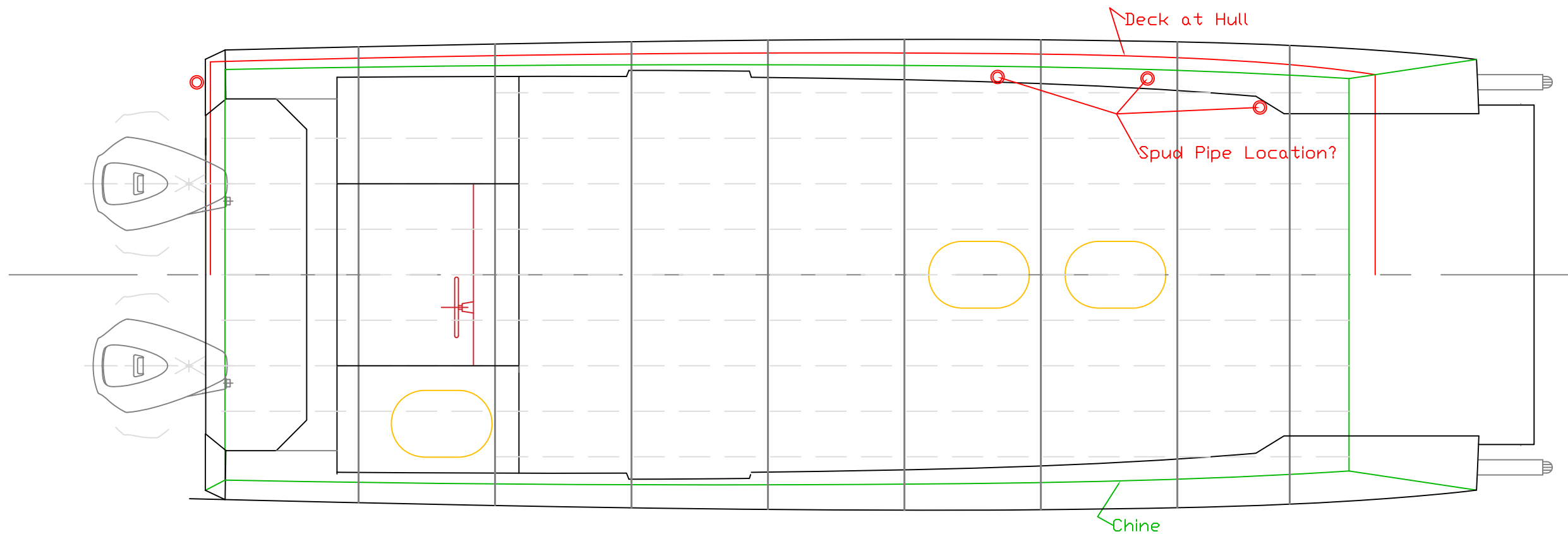
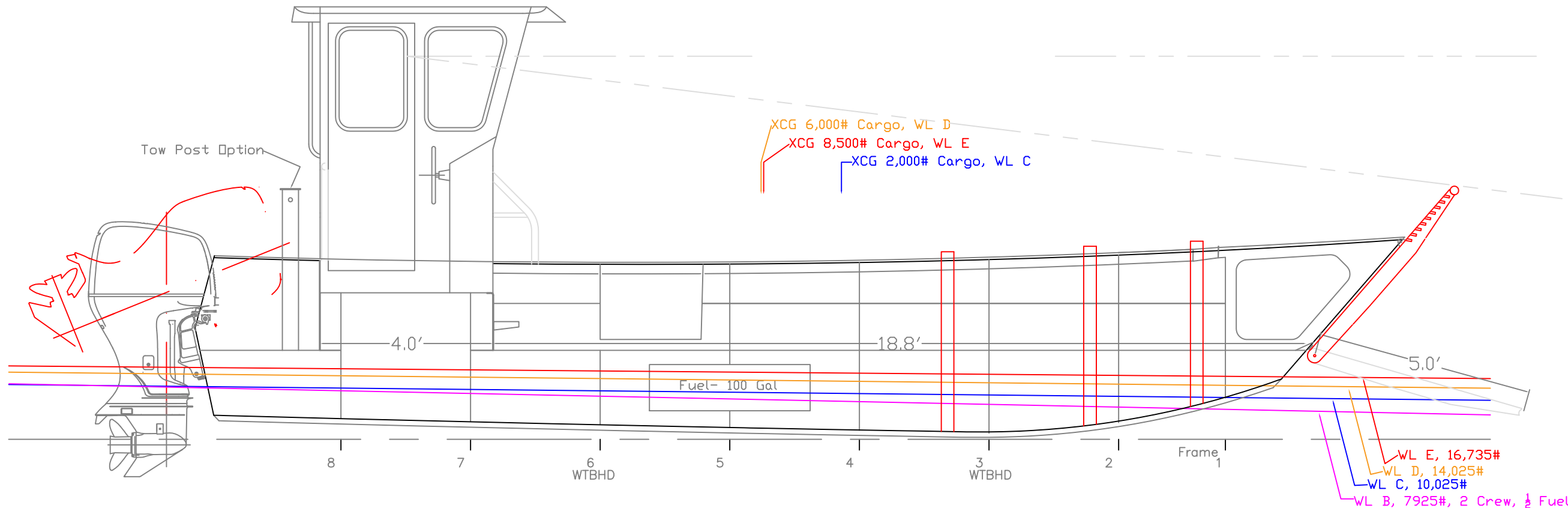
Particulars
 Hull LOA - 28' - 0"
 Hull Skin Beam - 10' 3 1/2"
 Base Displ. - 8,250# - 2 pax, 1/2 fuel
 Hull Draft - 8-16"



OUTBOARD VIEWS

REV.	DESCRIPTION

28' LANDING CRAFT		
For: Chesterfield		
SCALE 3/8" = 1'	DES/DWN WAL/JCC	DATE 8/10/16
Response Marine, Inc.		SHEET
Newburyport, MA, www.responsemarine.com		DWG NO. 536-1, R1



INBOARD VIEWS

REV.	DESCRIPTION

28' LANDING CRAFT		
For: Chesterfield		
SCALE 3/8" = 1'	DES/DWN WAL/JCC	DATE 8/10/16
Response Marine, Inc. Newburyport, MA, www.responsemarine.com		SHEET DWG NO. 536-2, R1