

Response Marine, Inc.  
 Stock List for Redman 25,  
 File: RMIeng\Redman  
 revised: 7/17/06

Print Date: 7/17/06

**EXTRUSION**

QTY	Description	Alloy	Dims	Thick	Length	Wt/Ft	Wt
2	Angle, Am. Std.	6061 T6	3x2	0.25	25	1.400	70
3	Flat Bar	6061 T6	2	0.19	12	0.443	16
12	Tee, Am. Std.	6061 T6	1.5x1.5	0.25	25	0.870	261
1	Round Tube	6061 T6	4	0.125	12	1.788	21

<b>Sub Total Extrusic</b>	<b>368</b>
---------------------------	------------

**SHEET/PLATE**

QTY	Description	Thick	Width	Lngh	lbs/ft^2	lbs
Note 5086 may be 5083. Both 5086 & 5083 to be Marine Grade ASTM B928						
8	3/16" Sheet- 5052 H32	0.190	60	120	2.67	1,068
3	3/16" Sheet- 5083 H117 Marine ASTM B-928	0.190	72	240	2.67	961
2	1/4" Plate 5086 H116-117, Marine ASTM B-928	0.250	60	240	3.500	700
2	1/4" Plate 5086 H116-117, Marine ASTM B-928	0.250	72	240	3.500	840
1	3/8" Plate 5086 H116-117, Marine ASTM B-928	0.375	48	144	5.184	249

<b>Total Sheet/Plate</b>	<b>3,818</b>
--------------------------	--------------

<b>Total Aluminum</b>	<b>4,186</b>
-----------------------	--------------

Response Marine, Inc.

Plaz Parts for Redman 25,  
 File: RMIdes\Redman  
 revised: 7/7/06

Print Date: 7/10/06

**3/16" Parts- 5052 H32**

<u>Part #</u>	<u>Pieces</u>	<u>Description</u>	<u>Stock</u>	<u>Bending</u>		
				<u>Bending</u>	<u>Back Gauge</u>	<u>Bend Info</u>
BC	1	Bow Cone	3A-7	Y		Bump to Jig
CO-FD	1	Coaming, Foredeck	3A-7			
CO-TD	1	Coaming, Transom Deck	3A-1			
D-A	1	Deck, Fwd	3A-5			
D-DS	1	Deck Body Fwd, Stbd	3A-2			
D-DP	1	Deck Body Fwd, Port	3A-2			
D-FP	1	Deck Body Aft, Port	3A-3			
D-FS	1	Deck Body Aft, Stbd	3A-6			
D-T	1	Deck, Soft Patch at Tank	3A-4			
F1-A	1	Frame 1, Insert	3A-8			
F2	1	Frame 2	3A-1	Y	1 11/16"	Bend 90 AFT
F-2P	1	Frame 2, upper Port	3A-7	Y	1 11/16"	Bend 90 AFT
F-2S	1	Frame 2, upper Stbd	3A-7	Y	1 11/16"	Bend 90 AFT
F3	1	Frame 3	3A-7	Y	1 11/16"	Bend 90 AFT
F3-P	1	Frame 3, Upper Port	3A-7	Y	1 11/16"	Bend 90 AFT
F3-S	1	Frame 3, Upper Stbd	3A-7	Y	1 11/16"	Bend 90 AFT
F4	1	Frame 4	3A-8	Y	1 11/16"	Bend 90 FWD
F4-P	1	Frame 4, Upper Port	3A-7	Y	1 11/16"	Bend 90 FWD
F4-S	1	Frame 4, Upper Stbd	3A-8	Y	1 11/16"	Bend 90 FWD
F5	1	Frame 5	3A-8	Y	1 11/16"	Bend 90 AFT
F5-P	1	Frame 5, upper Port	3A-7	Y	1 11/16"	Bend 90 AFT
F5-S	1	Frame 5, upper Stbd	3A-8	Y	1 11/16"	Bend 90 AFT
F6	1	Frame 6	3A-7	Y	1 11/16"	Bend 90 AFT
F6-P	1	Frame 6, upper Port	3A-8	Y	1 11/16"	Bend 90 AFT
F6-S	1	Frame 6, upper Stbd	3A-8	Y	1 11/16"	Bend 90 AFT
F7-BP	1	Frame 7, Body, Port	3A-3	Y	1 11/16"	Bend 90 AFT
F7-BS	1	Frame 7, Body, Stbd.	3A-2	Y	1 11/16"	Bend 90 AFT
F7-P	1	Frame 7, upper Port	3A-8	Y	1 11/16"	Bend 90 AFT
F7-S	1	Frame 7, upper Stbd	3A-6	Y	1 11/16"	Bend 90 AFT
J-BC	1	Jig, Bow Cone	3A-3			
J-T	2	Jig, Transom	3A-3			
J-TSA	2	Jig, Topsides seam, 2" fwd	3A-1			
J-TSB	2	Jig, Topsides seam, 2" aft	3A-7,3A-8			
T-1	1	Tank Body	3A-1	Y	None	On Marks
T-2	1	Tank Top	3A-5			
T-3	1	Tank Baffle	3A-4			
T-4	2	Tank Ends	3A-6			
TD	1	Transom Deck	3A-1			
	42	Total Pieces				

**3/16" Parts- 5086/5083**

<u>Part #</u>	<u>Pieces</u>	<u>Description</u>	<u>Stock</u>
ALB	1	Anchor Locker Bottom	3-3
CO-AP	1	Coaming fwd, Port	3-2

CO-AS	1	Coaming fwd, Stbd	3-1
CO-BP	1	Coaming Aft, Port	3-1
CO-BS	1	Coaming Aft, Stbd	3-2
D-BP	1	Deck, mid Port Margin	3-1
D-BS	1	Deck, mid Stbd Margin	3-2
D-CP	1	Deck, aft Port Margin	3-3
D-CS	1	Deck, aft Stbd Margin	3-3
F1	1	Frame 1	3-3
FD	2	Foredeck	3-1,3-2
SD-AP	1	Side Deck, fwd Port	3-1
SD-AS	1	Side Deck, fwd Stbd	3-2
SD-BP	1	Side Deck, Aft Port	3-2
SD-BS	1	Side Deck, Aft Stbd	3-1
TS-AP	1	Topsides, forward, Port	3-1
TS-AS	1	Topsides, forward, Stbd	3-2
TS-BP	1	Topsides, aft, Port	3-3
TS-BS	1	Topsides, aft, Stbd	3-3
	20	Total Pieces (3/16")	

**1/4" Parts**

<u>Part #</u>	<u>Pieces</u>	<u>Description</u>	<u>Stock</u>
B-AP	1	Bottom Plate, Fwd Port	4-1
B-AS	1	Bottom Plate, Fwd Stbc	4-2
B-BP	1	Bottom Plate, Aft Port	4-3
B-BS	1	Bottom Plate, Aft Stbd	4-3
BL-1	2	Bottom Longitudinal 1	4-1,4-2
BL-2A	2	Bottom Longitudinal 2 (fwd)	4-3
BL-2B	2	Bottom Longitudinal 2 (aft)	4-3,4-4
BL-3A	2	Bottom Longitudinal 3 (fwd)	4-1
BL-3B	2	Bottom Longitudinal 3 (aft)	4-4
BL-4A	2	Bottom Longitudinal 4 (fwd)	4-4
BL-4B	2	Bottom Longitudinal 4 (aft)	4-4
C-A	2	Chine fwd	4-4
C-B	2	Chine aft	4-3,4-4
EB-1	2	Engine Bed Girder	4-1
EB-6	2	Engine Bed Knee	4-1
EB-D	2	Engine Bed Doubler, F7	4-1
TSL-A	2	Topside Stringer, fwd	4-4
TSL-B	2	Topside Stringer, aft	4-1,4-2
TR	1	Transom	4-3
	33	Total Pieces	

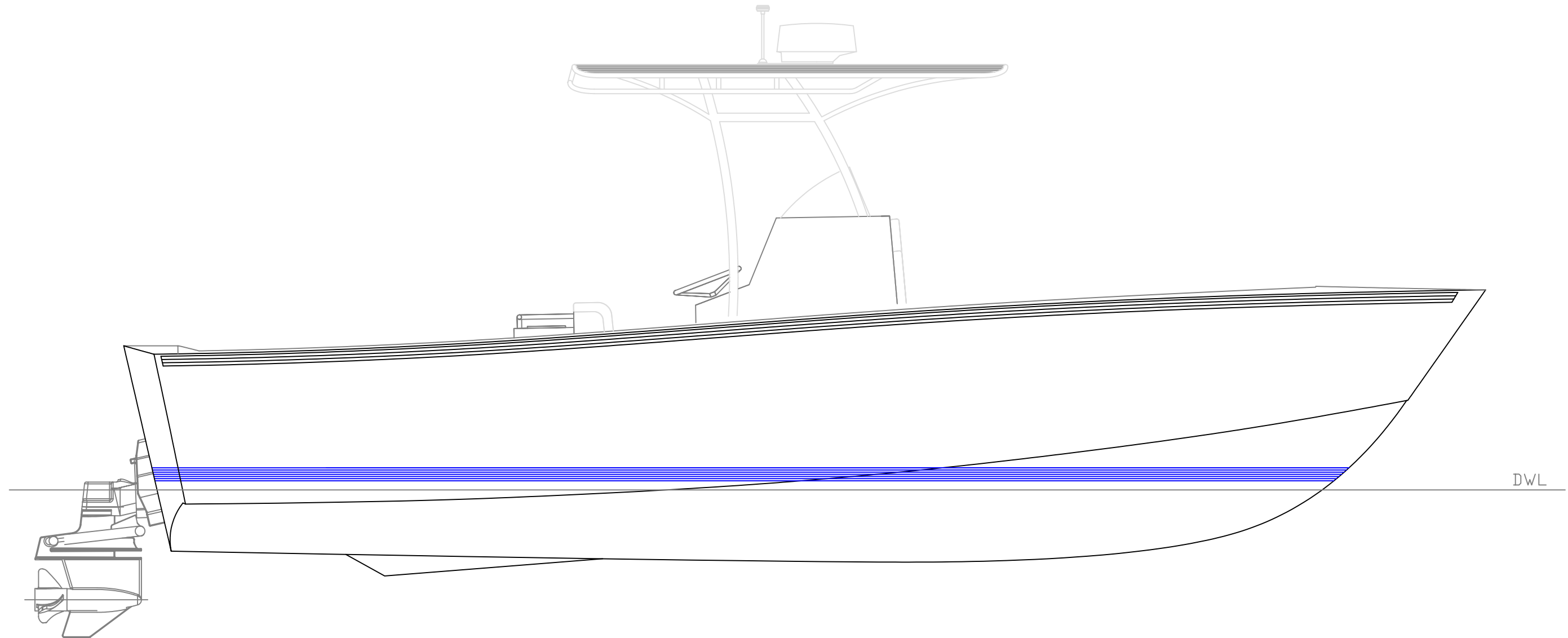
**3/8" Parts**

<u>Part #</u>	<u>Pieces</u>	<u>Description</u>	<u>Stock</u>
K-A	1	Keel, Fwd	6-1
K-B	1	Keel, Mid	6-1
K-C	1	Keel, Aft	6-1
EB-2	2	Engine Bed Flange, fwd	6-1
EB-3	2	Engine Bed Flange, mid	6-1
EB-4	2	Engine Bed Flange, aft mid	6-1
EB-5	2	Engine Bed Flange, aft	6-1

11 Total 3/8" parts

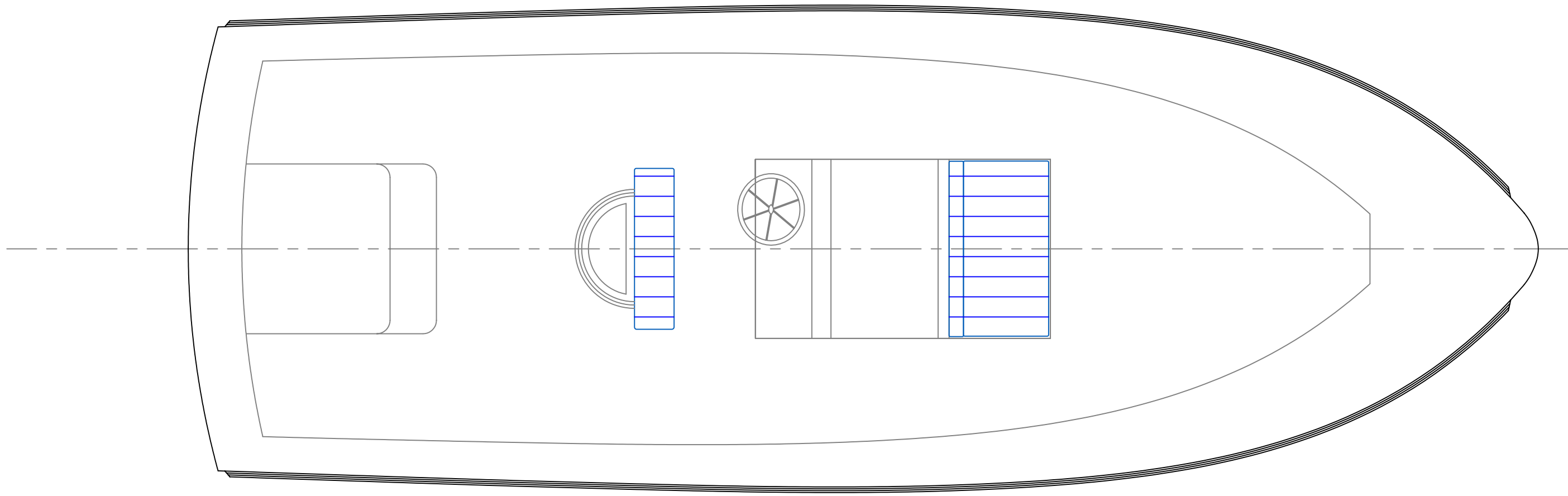
106 Total Cut Parts

Particulars~  
 Hull LOA; 25' 2½"  
 Hull Beam; 8' 11"  
 DWL Draft; 1' 7" to Hull Skeg  
 DWL Displacement; 5,500# w/ 95 gal fuel, 2 pax.



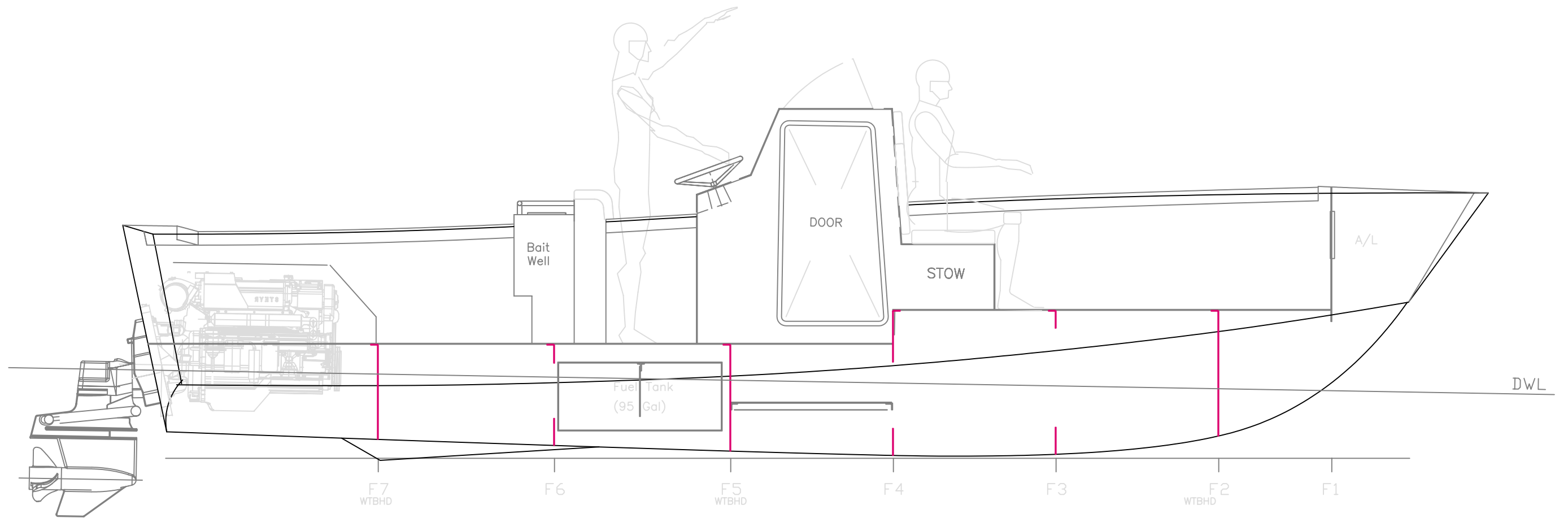
OUTBOARD PROFILE		
REDMAN 25		
SCALE 1/2" = 1'	DES/DWN WAL	DATE 7/4/06
<b>Response Marine, Inc.</b> Newburyport, MA, <a href="http://www.responsemarine.com">www.responsemarine.com</a>		SHEET DWG NO. 258-01

REV.	DESCRIPTION



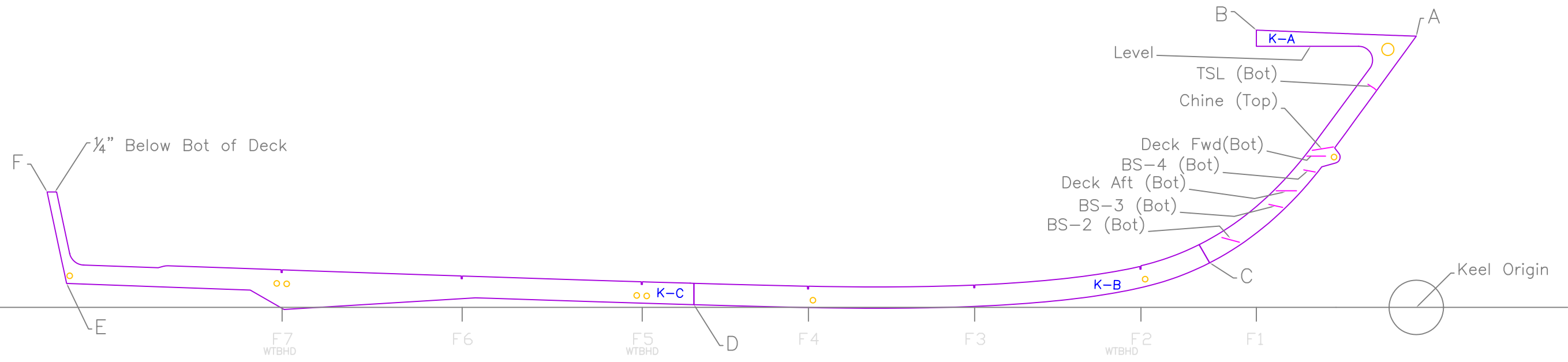
OUTBOARD PLAN		
REDMAN 25		
SCALE 1/2" = 1'	DES/DWN WAL	DATE 7/4/06
<b>Response Marine, Inc.</b>		SHEET
Newburyport, MA, <a href="http://www.responsemarine.com">www.responsemarine.com</a>		DWG NO. 258-02

REV.	DESCRIPTION



INBOARD PROFILE		
REDMAN 25		
SCALE 1/2" = 1'	DES/DWN WAL	DATE 7/4/06
<b>Response Marine, Inc.</b> Newburyport, MA, www.responsemarine.com		SHEET DWG NO. 258-03

REV. DESCRIPTION

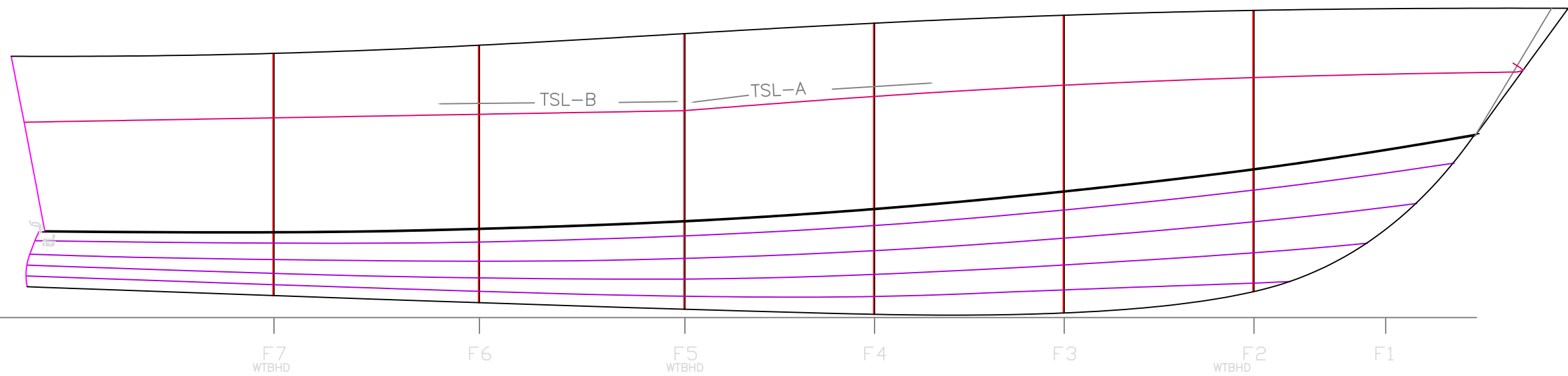
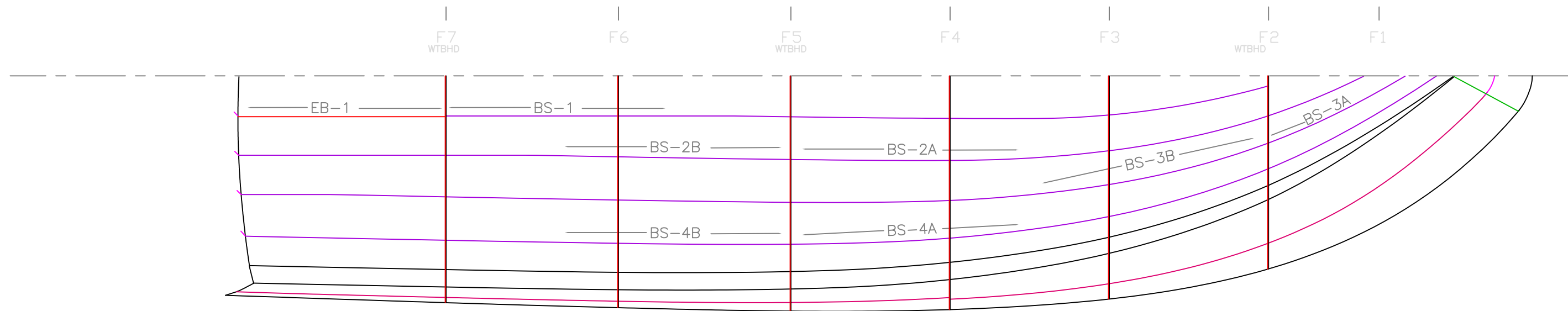


Response Marine, Inc.					
Redman 25		7/3/06			
Keel Points					
	Inches- sixteenths		Feet		
	Horizontal	Vertical	Horizontal	Vertical	
A to Origin					
B to Origin					
C to Origin					
D to Origin	1				
E to Origin	2				
F to Origin	2				
Aligned: I					
A to					
A to					
A to					
A to					
C to					
Response Marine, Inc.					
Redman 25		Keel Points			
A to Origin					
B to Origin					
C to Origin					
D to Origin					
E to Origin					
F to Origin					
Aligne					
A to					
A to					
A to					
A to					
C to					

KEEL LAYOUT		
REDMAN 25		
SCALE 1/2"=1'	DES/DWN WAL	DATE 7/3/06
Response Marine, Inc.		SHEET
Newburyport, MA, www.responsemarine.com		DWG NO. 258-2-1

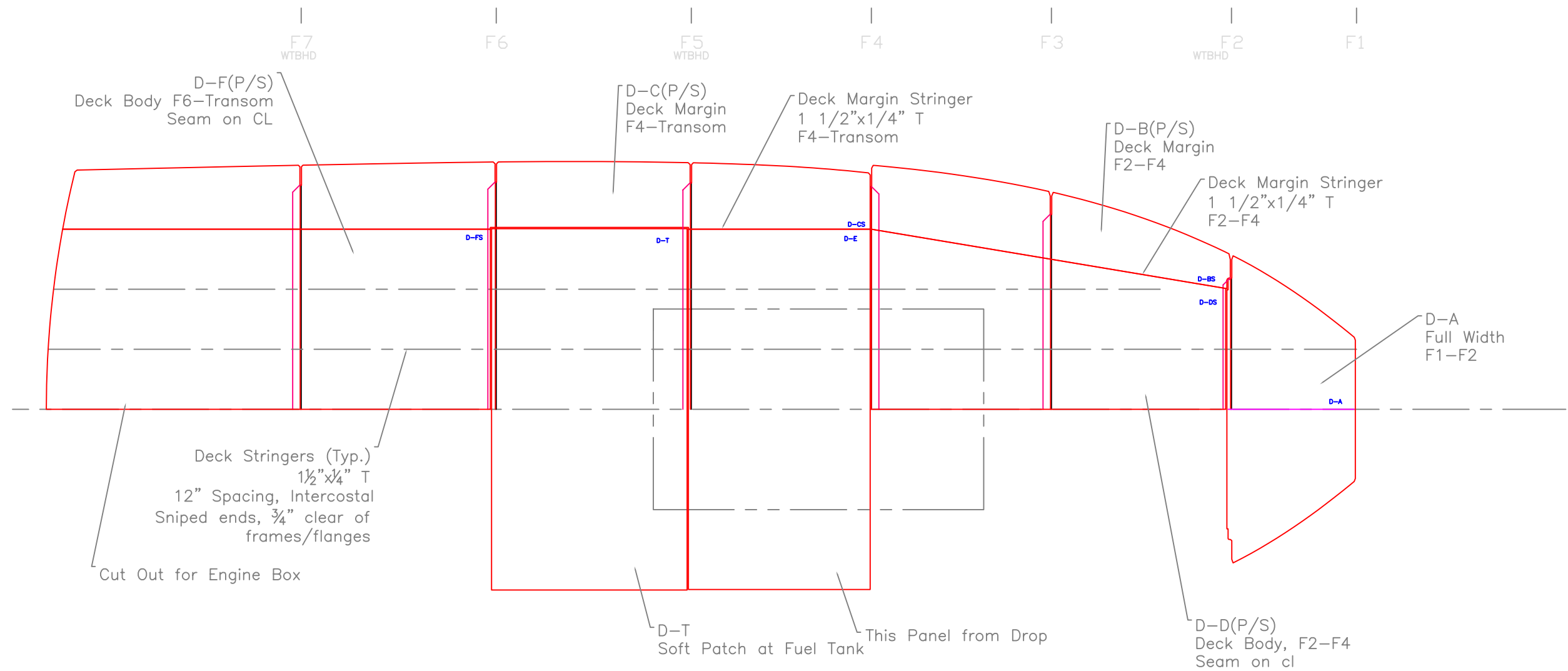
REV.	DESCRIPTION





HULL STRINGERS		
REDMAN 25		
SCALE 1/2"=1'	DES/DWN WAL	DATE 7/4/06
<b>Response Marine, Inc.</b> Newburyport, MA, <a href="http://www.responsemarine.com">www.responsemarine.com</a>		SHEET DWG NO. 258-2-02

REV.	DESCRIPTION



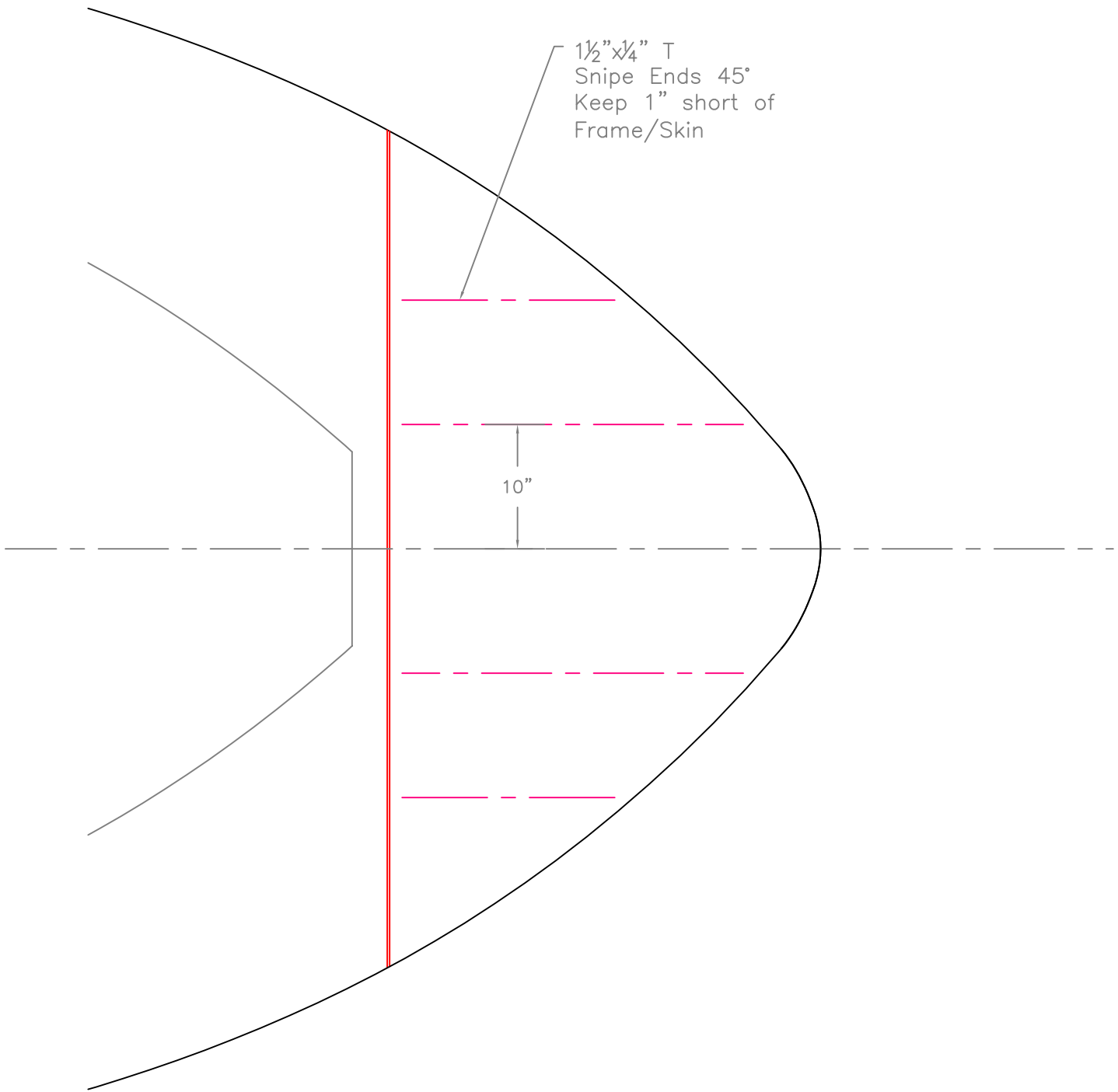
DECK PARTS & STRUCTURE

REDMAN 25

SCALE 1/2"=1'	DES/DWN WAL	DATE 7/4/06
------------------	----------------	----------------

<b>Response Marine, Inc.</b>		SHEET
Newburyport, MA, <a href="http://www.responsemarine.com">www.responsemarine.com</a>		DWG NO. 258-2-03

REV.	DESCRIPTION



1 1/2" x 1/4" T  
 Snipe Ends 45°  
 Keep 1" short of  
 Frame/Skin

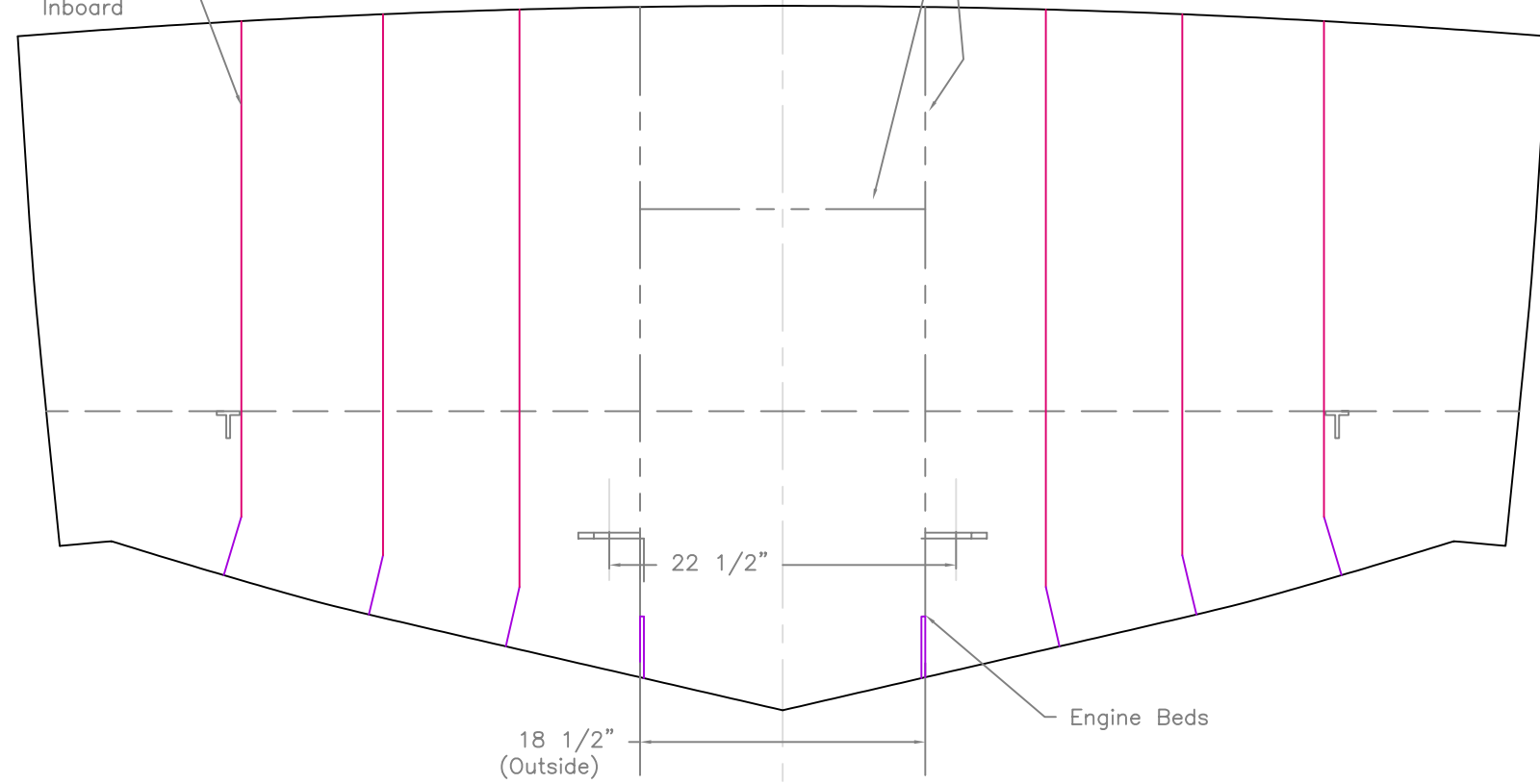
10"

FOREDECK FRAMING		
REDMAN 25		
SCALE 1" = 1'	DES/DWN WAL	DATE 7/4/06
<b>Response Marine, Inc.</b> <small>Newburyport, MA    www.responsemarine.com</small>		SHEET DWG NO. 258-2-04

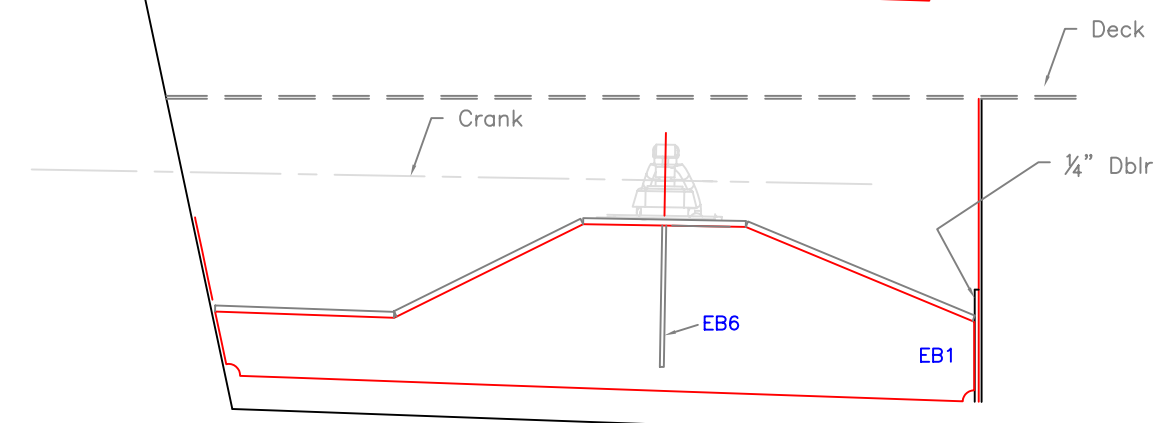
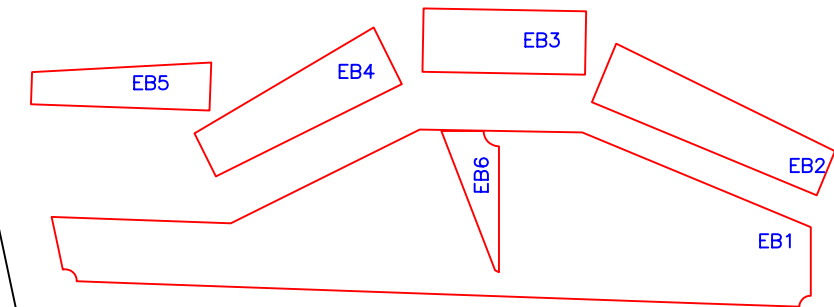
REV.	DESCRIPTION

3x2x1/4" Angle  
In-Line w/  
bottom  
Stringers  
Flanges  
Inboard

These  
Stiffeners  
to Suit  
I/O



TRANSOM VIEW

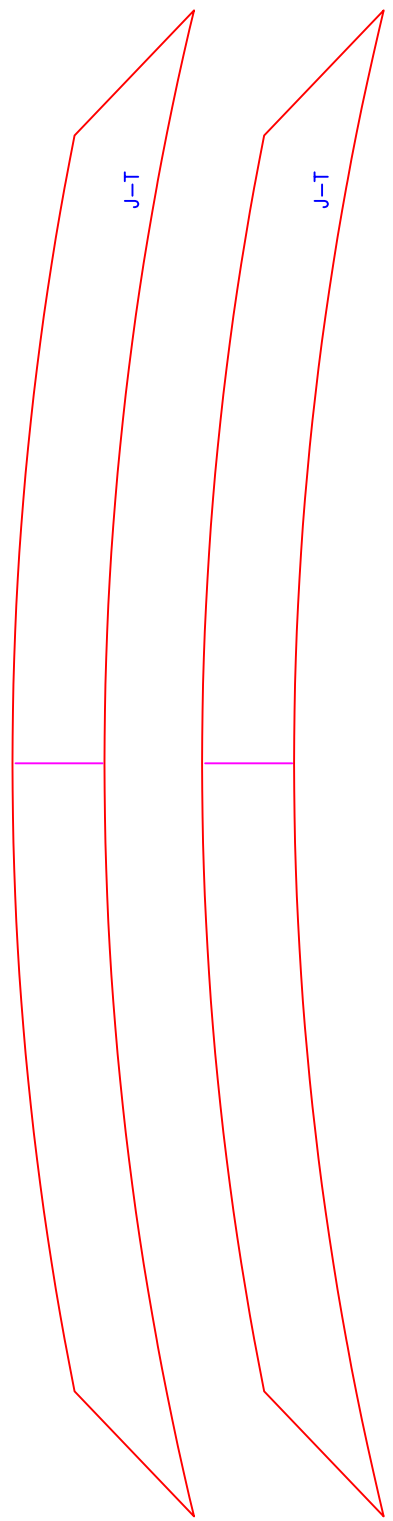


ENGINE BED PROFILE

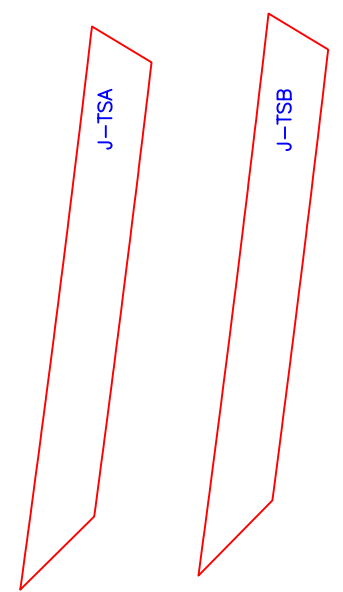
REV.	DESCRIPTION

TRANSOM AREA STRUCT		
REDMAN 25		
SCALE 1"=1'	DES/DWN WAL	DATE 7/4/06
<b>Response Marine, Inc.</b> <small>Newburyport, MA    www.responsemarine.com</small>		SHEET DWG NO. 258-2-05

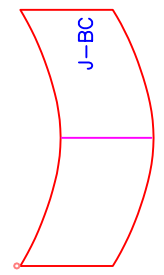
Transom Jigs—  
Fit inside or Outside  
Horizontal, at any height



Topside Jigs  
Fit outside at TS Pl Seam  
J-TSA is 2" fwd of Seam  
J-TSB is 2" aft of seam

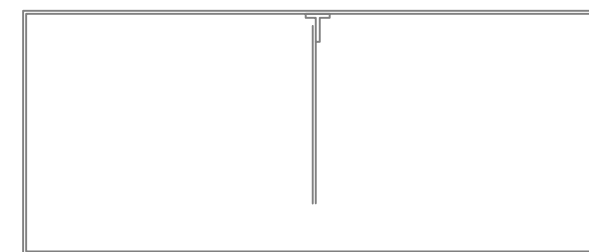
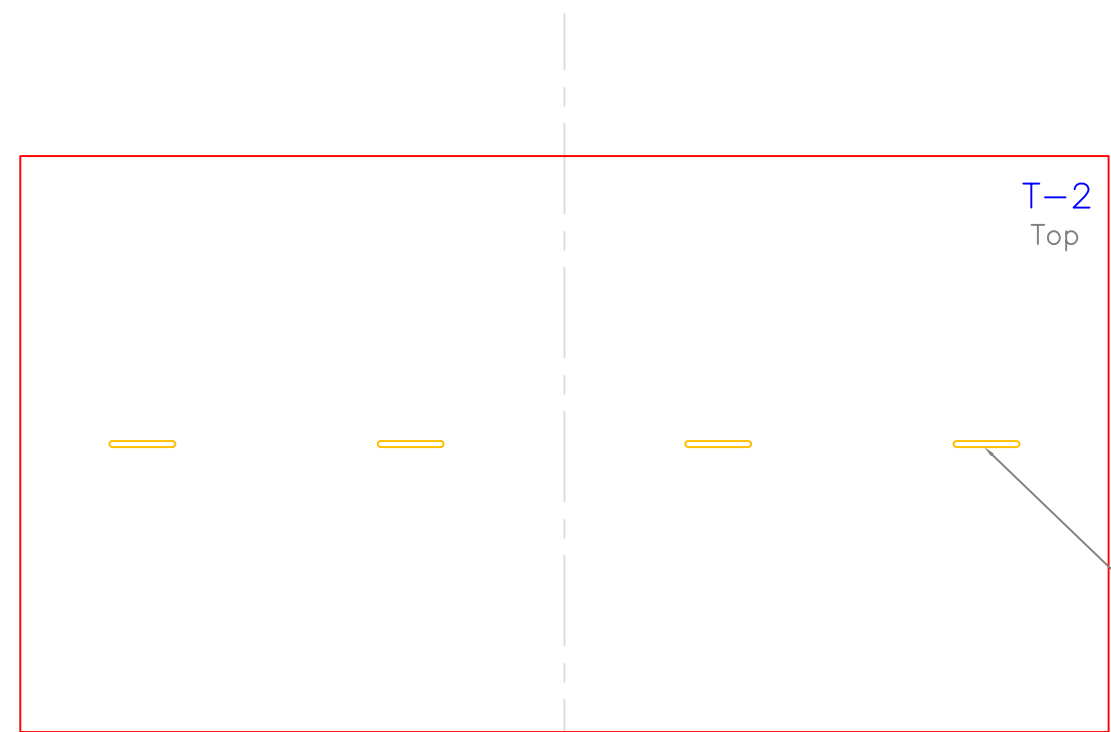
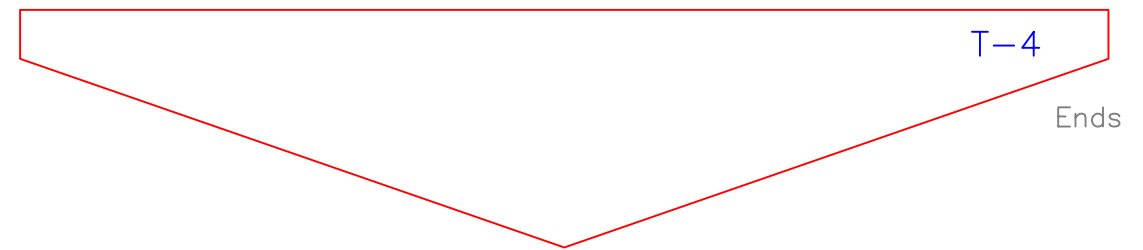
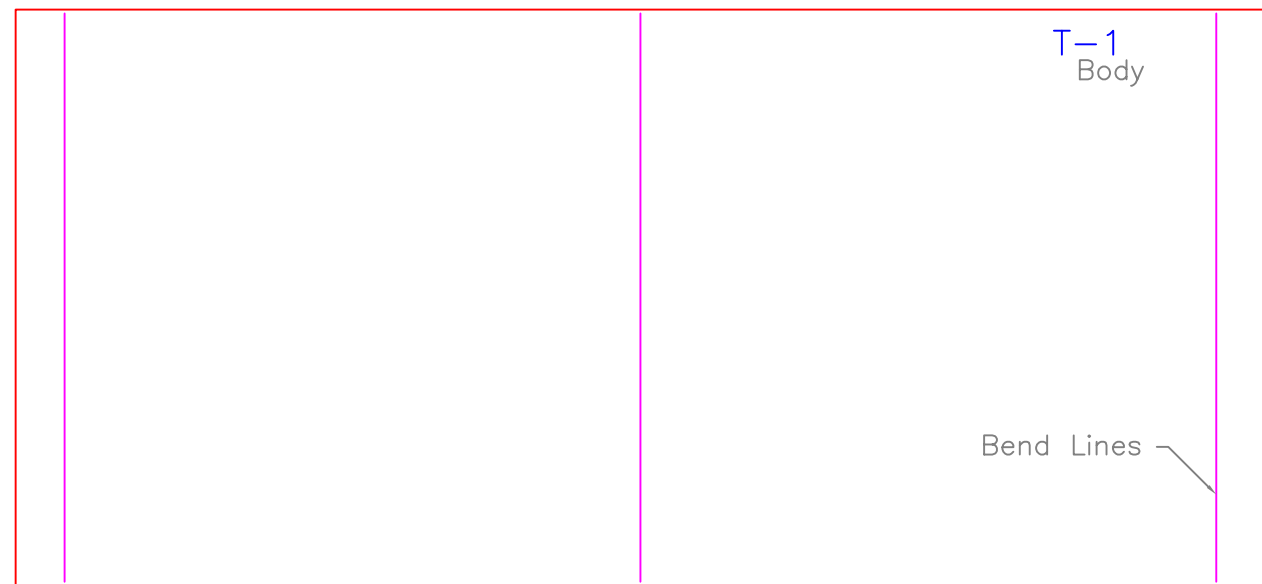
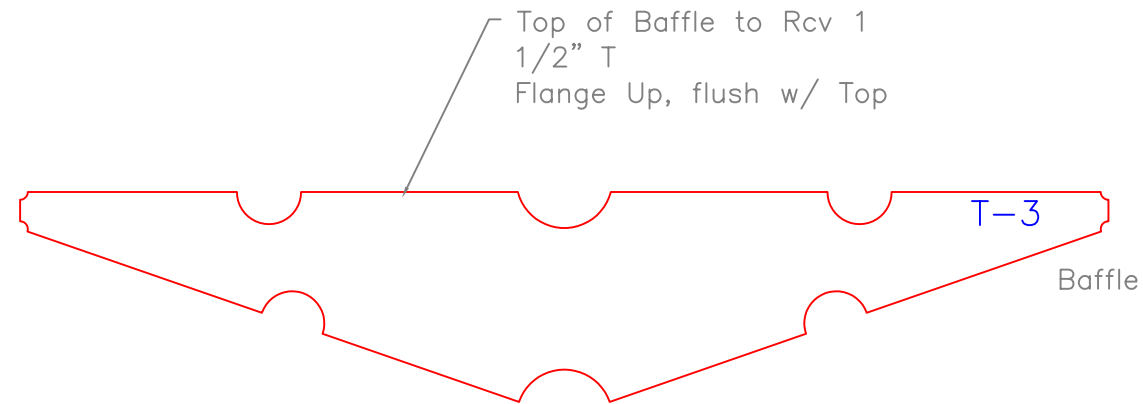
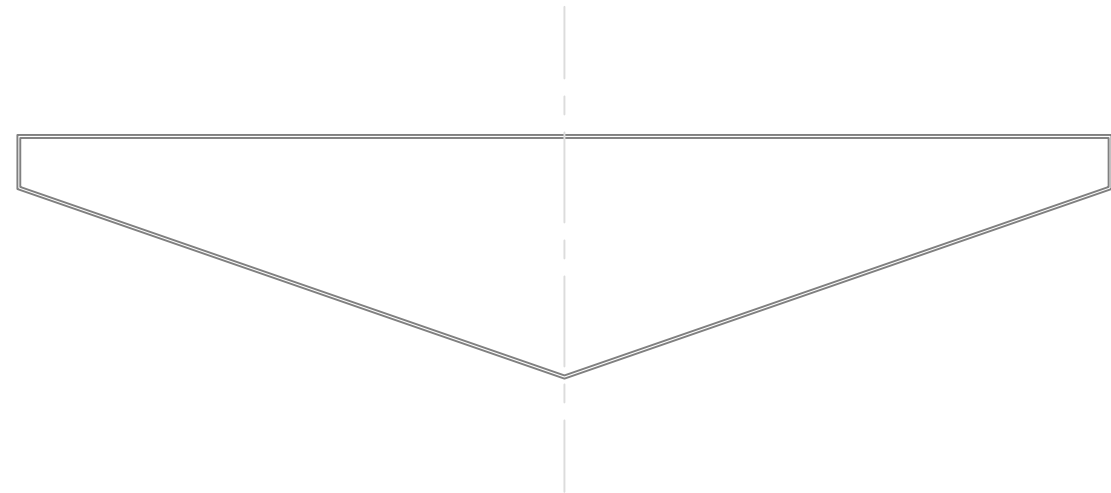


Bow Cone Jig  
Fit Inside or Outside at Top Corners  
Square to Bow Cone



JIGS		
REDMAN 25		
SCALE 1" = 1'	DES/DWN WAL	DATE 7/4/06
<b>Response Marine, Inc.</b> Newburyport, MA, <a href="http://www.responsemarine.com">www.responsemarine.com</a>		SHEET DWG NO. 258-2-06

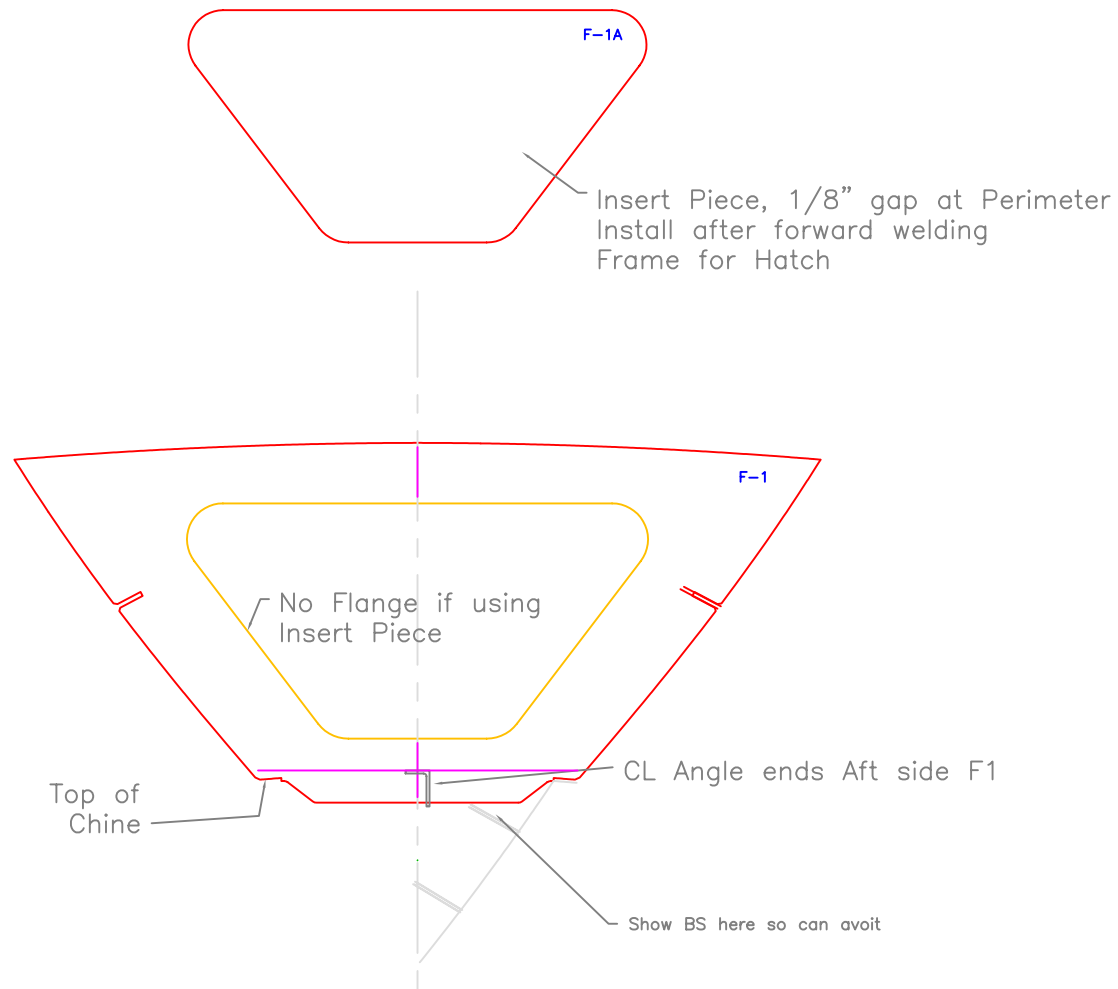
REV.	DESCRIPTION



PROFILE SECTION

REV.	DESCRIPTION

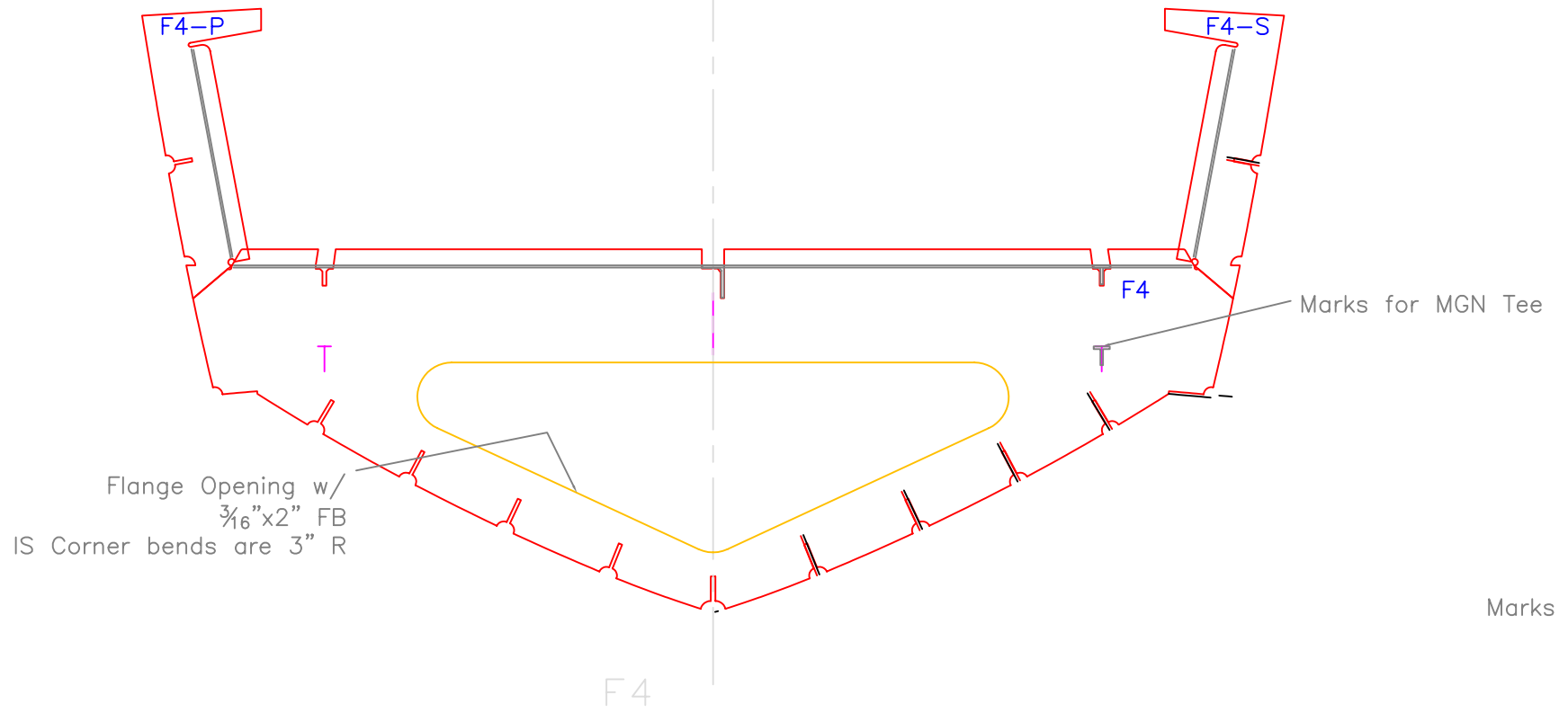
FUEL TANK- 95 gal.		
REDMAN 25		
SCALE 1" = 1'	DES/DWN WAL	DATE 7/4/06
Response Marine, Inc.		SHEET
Newburyport, MA www.responsemarine.com		DWG NO. 258-3-01



FRAME 1		
REDMAN 25		
SCALE 3/4"=1'	DES/DWN WAL	DATE 7/3/06
<b>Response Marine, Inc.</b> Newburyport, MA, <a href="http://www.responsemarine.com">www.responsemarine.com</a>		SHEET DWG NO. 258-F-01

REV.	DESCRIPTION

Looking Fwd.  
Bend Flanges FWD



Flange Opening w/  
3/16" x 2" FB  
IS Corner bends are 3" R

Marks for MGN Tee

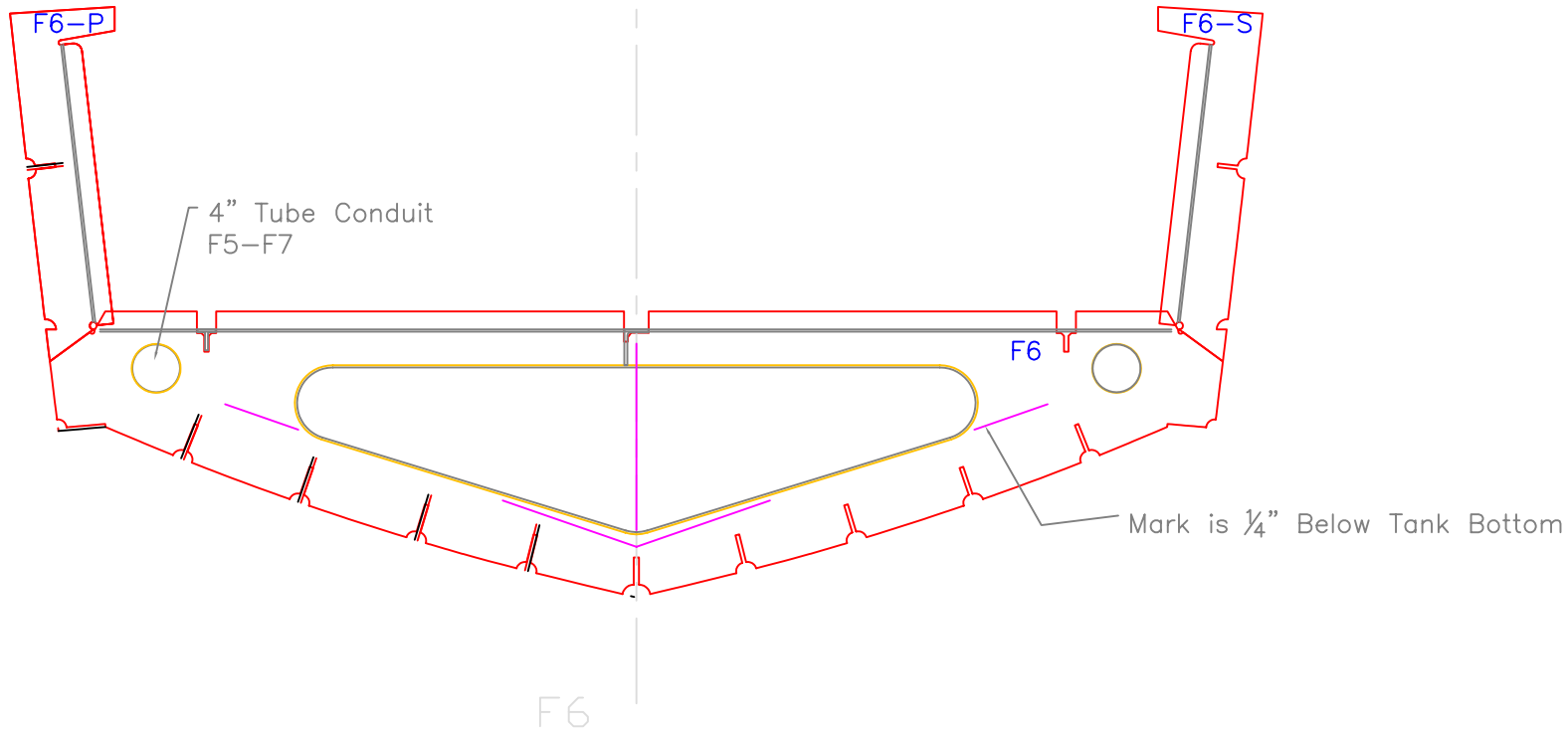
Marks

FRAME 4		
REDMAN 25		
SCALE 3/4" = 1'	DES/DWN WAL	DATE 7/3/06
<b>Response Marine, Inc.</b> Newburyport, MA, <a href="http://www.responsemarine.com">www.responsemarine.com</a>		SHEET
		DWG NO. 258-F-04

REV.	DESCRIPTION



Looking AFT  
 Bend Flanges Aft



Mark is 1/4" Below Tank Bottom

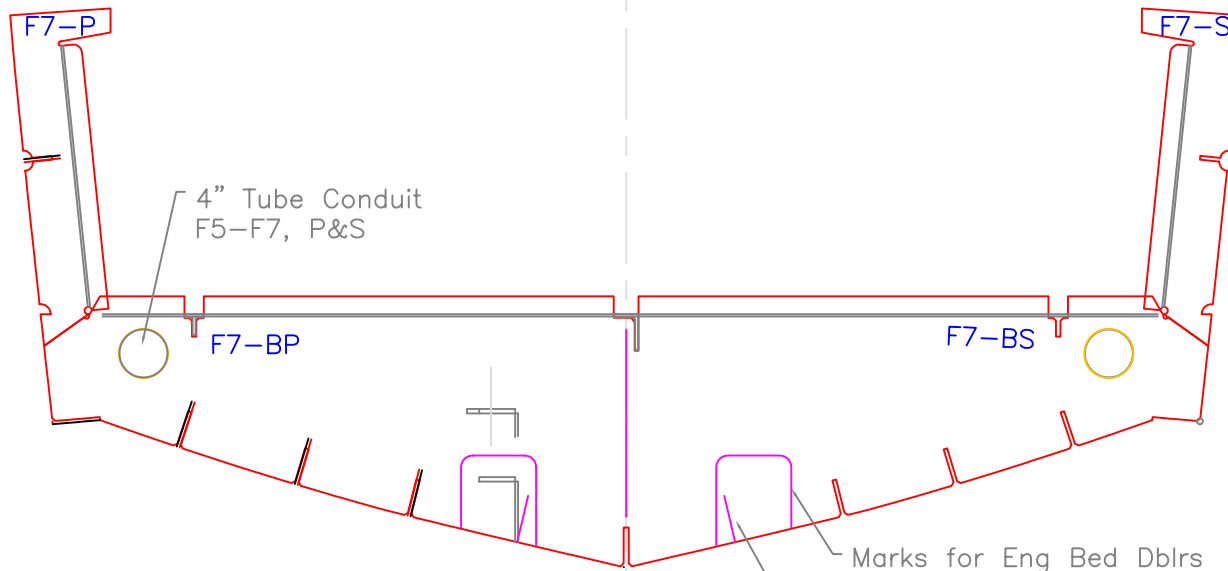
F6

FRAME 6		
REDMAN 25		
SCALE	DES/DWN	DATE
3/4"=1'	WAL	7/3/06
		SHEET
		DWG NO.
		258-F-06

REV.	DESCRIPTION

**Response Marine, Inc.**  
 Newburyport, MA, [www.responsemarine.com](http://www.responsemarine.com)

Looking Fwd.  
Bend Flanges Aft



Bottom

Marks for Eng Bed Dblrs

Marks for end BS-1

F7  
WTBHD

**EBD** Install after hull Assy  
Before Engine Beds

FRAME 7		
REDMAN 25		
SCALE 3/4"=1'	DES/DWN WAL	DATE 7/3/06
<b>Response Marine, Inc.</b>		SHEET
Newburyport, MA, <a href="http://www.responsemarine.com">www.responsemarine.com</a>		DWG NO. 258-F-07

REV.	DESCRIPTION