

DRAWING LIST

Design	Dwg	Description	Date
578		30'6" x 10' Cat Landing Craft for <span style="border: 1px solid red; display: inline-block; width: 80px; height: 15px;"></span>	
578A	-1	Outboard Views- Bighorn	9/10/18
578A	-2	Inboard Profile- Bighorn	9/10/18
578AB	-3	End Views	9/10/18
578B	-1	Outboard Views- Cherokee Nation	9/10/18
578B	-2	Inboard Views- Cherokee Nation	9/10/18
578	-2-1	Keel Layout	9/10/18
	-2-2	Girder & Bridge Stringer	9/10/18
	-2-3	Bottom Skins	9/10/18
	-2-4	Bottom Plate Layout	9/10/18
	-2-5	Chine Plate Layout	9/10/18
	-2-6	Bridge Plate Layout	9/10/18
	-2-7	Topside Plate Layout	9/10/18
	-2-8	Center Hull Layout	9/10/18
	-2-9	Bow	9/10/18
	-2-10	Transom	9/10/18
	-2-11	Side Decks & Coamings	9/10/18
	-2-12	Cockpit Deck	9/10/18
	-2-13	Transom Locker & Deck	9/10/18
	-2-14	False Transom	9/10/18
	-2-15	Sheer Widths	9/10/18
	-2-16	Engine Deck & Wing Liner	9/10/18
	-CR-1	Hull Joint Details- Bottom	9/10/18
	-B-1	Forming: Flange- B-1	9/10/18
	-FR-1	Typical Frame	9/10/18
	-FR-2	Frame Dimensions	9/10/18
	-F1	Frame 1	9/10/18
	-F2	Frame 2	9/10/18
	-F3	Frame 3, WTBHD	9/10/18
	-F4	Frame 4	9/10/18
	-F5	Frame 5	9/10/18
	-F6	Frame 6	9/10/18
	-F7	Frame 7	9/10/18
	-F8	Frame 8	9/10/18

## Also Included:

Parts List (pdf & xls)  
3D dxf (by dropbox link)

Response Marine, Inc. Plaz Parts for #578 [redacted] 30' Cat LC

File: RM\ides\PB\Deriv\ [redacted]  
revised: 9/5/18

Print Date:

**3/16" Parts- 5052**

<u>Part #</u>	<u>Pieces</u>	<u>Description</u>	<u>Bending</u>	<u>Bend Info</u>
SD-BP	1	Side Deck, Jog to Transom BHD, Port	Y	2 bends, as marked, 3/8" ISR
SD-BS	1	Side Deck, Jog to Transom BHD, Stbd	Y	2 bends, as marked, 3/8" ISR
SDC-P	1	Side Deck Coaming, Bow Cmpmt to Jog Aft of F5, Port	Y	2 bends, as marked, 3/8" ISR
SDC-S	1	Side Deck Coaming, Bow Cmpmt to Jog Aft of F5, Stbd	Y	2 bends, as marked, 3/8" ISR
T-BHD	1	Transom BHD		
T-BHD-D	1	Transom Locker Deck		
TR-WL-P	1	Transom Wing Liner, Port	Y	As Marked, 3/8" ISR
TR-WL-S	1	Transom Wing Liner, Stbd	Y	As Marked, 3/8" ISR
TR-WT-P	1	Transom Wing Top, Port		
TR-WT-S	1	Transom Wing Top, Stbd		
	10	Total Pieces (3/16", 5052)		

**3/16" Parts- 5086/83**

<u>Part #</u>	<u>Pieces</u>	<u>Description</u>	<u>Bending</u>	<u>Bend Info</u>
DB-AP	1	Deck Body, Stem-F3, Port		
DB-AS	1	Deck Body, Stem-F3, Stbd		
DB-BP	1	Deck Body, F3-F6, Port		
DB-BS	1	Deck Body, F3-F6, Stbd		
DB-CP	1	Deck Body, F6-False Transom, Port		
DB-CS	1	Deck Body, F6-False Transom, Stbd		
DB-TP	1	Deck Body, F4-F6, over Tank, Port		
DB-TS	1	Deck Body, F4-F6, over Tank, Stbd		
DB-E	1	Deck Body at Engine Deck, aft of F Tran		
DM-AP	1	Deck Margin, Bow-F3, Port		
DM-AS	1	Deck Margin, Bow-F3, Stbd		
DM-BP	1	Deck Margin, F3 to False Transom, Port		
DM-BS	1	Deck Margin, F3 to False Transom, Stbd		
FTRAN	1	False Transom	Y	As Marked, 3/8" ISR
SD-AP	1	Side Deck, Bow to Jog aft of F5, Port		
SD-AS	1	Side Deck, Bow to Jog aft of F5, Stbd		
	16	Total Pieces (3/16" 5086/83)		

**1/4" Parts 5086/83**

<u>Part #</u>	<u>Pieces</u>	<u>Description</u>	<u>Bending</u>	<u>Bend Info</u>
B-P	2	Bottom Plate, Port side of each hull		
B-S	2	Bottom Plate, Stbd side of each hull		
BD-P	2	Bottom Doubler, 1" below chine to mid F4, Port Sides of Outer Hulls		
BD-S	2	Bottom Doubler, 1" below chine to mid F4, Stbd Sides of Outer Hulls		
BLC-P	1	Bow Locker, Port	Y	on Marks, 5/8" ISR
BLC-S	1	Bow Locker, Stbd	Y	on Marks, 5/8" ISR
BR	1	Bridge Plate		
BR-BS1-AP	1	Bridge Stringer #1, Bow to F3, 5" off CL, Port	Y	Flange B-1
BR-BS1-AS	1	Bridge Stringer #1, Bow to F3, 5" off CL, Stbd	Y	Flange B-1
BR-BS1-BP	1	Bridge Stringer #1, F3 to Transom, 5" off CL, Port		
BR-BS1-BS	1	Bridge Stringer #1, F3 to Transom, 5" off CL, Stbd		
BR-G-AP	1	Bridge Girder, Bow to aft of F5, Port	Y	Flange B-1
BR-G-AS	1	Bridge Girder, Bow to aft of F5, Stbd	Y	Flange B-1
BR-G-BP	1	Bridge Girder, aft of F5 to Transom, Port	Y	Flange B-1
BR-G-BS	1	Bridge Girder, aft of F5 to Transom, Stbd	Y	Flange B-1
BR-BS3-P	1	Bridge Stringer #3, Bow to ~14" aft, 26.75" off CL, Port		
BR-BS3-S	1	Bridge Stringer #3, Bow to ~14" aft, 26.75" off CL, Stbd		

BR-F0	1	Bridge Transverse Stiff fwd of F1, btwn #1 Bridge Stringers		
CS-P	1	Chine Stiffener at Bow to F1, Port		
CS-S	1	Chine Stiffener at Bow to F1, Stbd		
CLH-TR-P	1	CL Hull Transom, Port		
CLH-TR-S	1	CL Hull Transom, Stbd		
CLH-BOT-P	1	CL Hull Bot, Port		
CLH-BOT-S	1	CL Hull Bot, Stbd		
CLH-F1	1	CL Hull, Frame 1		
CLH-F2	1	CL Hull, Frame 2		
CLH-F3	1	CL Hull, Frame 3		
DR-T	1	Door Threshold- 4"x~75" FB		
F1	1	Frame 1	Y	Flange, B-1
F1-P	1	Frame 1, upper Port	Y	Flange, B-1
F1-S	1	Frame 1, upper Stbd	Y	Flange, B-1
F2	1	Frame 2	Y	Flange, B-1
F2-P	1	Frame 2, upper Port	Y	Flange, B-1
F2-S	1	Frame 2, upper Stbd	Y	Flange, B-1
F3	1	Frame 3	Y	Flange, B-1
F3-P	1	Frame 3, Upper Port	Y	Flange, B-1
F3-S	1	Frame 3, Upper Stbd	Y	Flange, B-1
F4	1	Frame 4	Y	Flange, B-1
F4-P	1	Frame 4, Upper Port	Y	Flange, B-1
F4-S	1	Frame 4, Upper Stbd	Y	Flange, B-1
F5	1	Frame 5	Y	Flange, B-1
F5-P	1	Frame 5, upper Port	Y	Flange, B-1
F5-S	1	Frame 5, upper Stbd	Y	Flange, B-1
F6	1	Frame 6	Y	Flange, B-1
F6-P	1	Frame 6, upper Port	Y	Flange, B-1
F6-S	1	Frame 6, upper Stbd	Y	Flange, B-1
F7	1	Frame 7	Y	Flange, B-1
F7-P	1	Frame 7, upper Port	Y	Flange, B-1
F7-S	1	Frame 7, upper Stbd	Y	Flange, B-1
F8	1	Frame 8	Y	Flange, B-1
TS-P	1	Topsides, Outboard, Port		
TS-S	1	Topsides, Outboard, Stbd		
TS-IB-P	1	Topsides, Inboard, Port		
TS-IB-S	1	Topsides, Inboard, Stbd		
TSL-1AP	1	Topside Stringer #1, F1-F3, Port		
TSL-1AS	1	Topside Stringer #1, F1-F3, Stbd		
TSL-1BP	1	Topside Stringer #1, F3-Transom, Port		
TSL-1BS	1	Topside Stringer #1, F3-Transom, Stbd		
TSL-2AP	1	Topside Stringer #2, Bow to F1, Port		
TSL-2AS	1	Topside Stringer #2, Bow to F1, Stbd		
TSL-2BP	1	Topside Stringer #2, F1 to False Transom, Port		
TSL-2BS	1	Topside Stringer #2, F1 to False Transom, Stbd		
TSL-3P	1	Topside Stringer #3, Bow to F6, Port		
TSL-3S	1	Topside Stringer #3, Bow to F6, Stbd		

68 Total 1/4" Parts

### 5/16" Parts 5083

<u>Part #</u>	<u>Pieces</u>	<u>Description</u>	<u>Bending</u>	<u>Bend Info</u>
BS1-AP	2	Bottom Stringer #1, Stem-F2, Port of Each Hull		
BS1-AS	2	Bottom Stringer #1, Stem-F2, Stbd of Each Hull		
BS1-BP	2	Bottom Stringer #1, F2- Transom, Port of Each Hull		
BS1-BS	2	Bottom Stringer #1, F2-Transom, Stbd of Each Hull		
C-AP	1	Chine, Outboard, Fwd Port		
C-AS	1	Chine, Outboard, Fwd Stbd		
C-BP	1	Chine, Outboard, Aft Port		
C-BS	1	Chine, Outboard, Aft Stbd		
C-IB-AP	1	Chine, Inboard, Fwd Port		
C-IB-AS	1	Chine, Inboard, Fwd Stbd		
C-IB-BP	1	Chine, Inboard, Aft Port		
C-IB-BS	1	Chine, Inboard, Aft Stbd		

16 Total 5/16" Parts

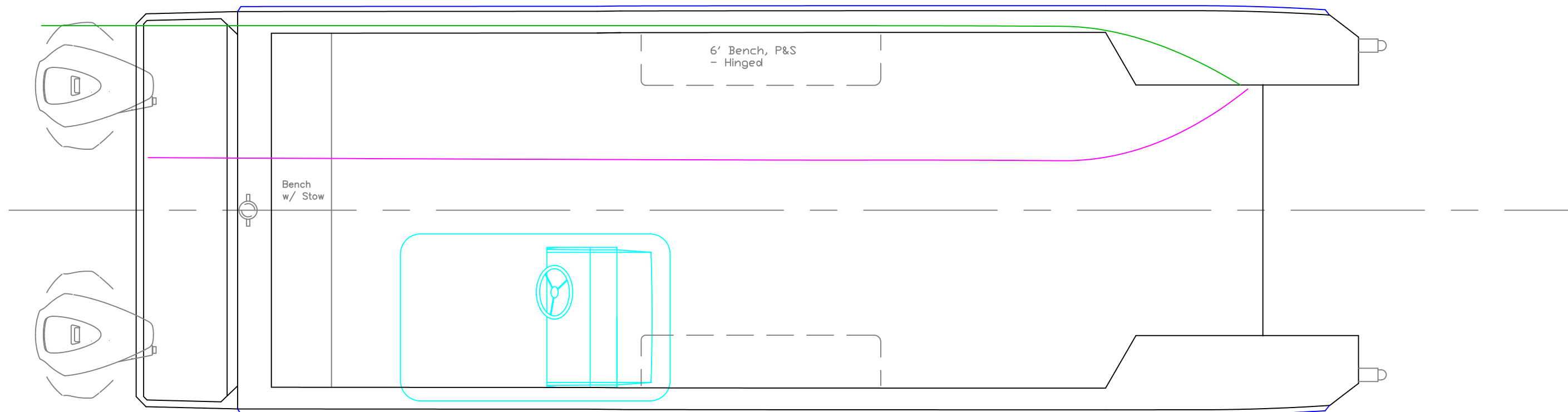
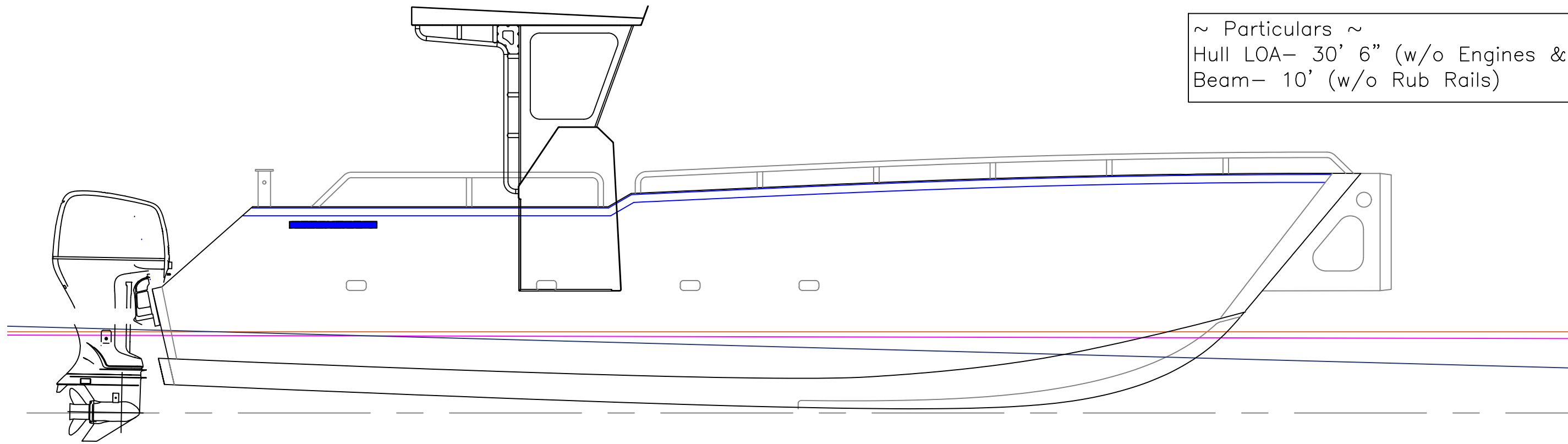
**3/8" Parts 5086/83**

<u>Part #</u>	<u>Pieces</u>	<u>Description</u>	<u>Bending</u>	<u>Bend Info</u>
CLH-K	1	Keel, CL Hull, Bow to F4		
	1	Total 3/8' Parts		

**1/2" Parts 5086/83**

<u>Part #</u>	<u>Pieces</u>	<u>Description</u>	<u>Bending</u>	<u>Bend Info</u>
BOW	1	Bow Plate	Y	on Marks
K-AP	1	Keel, Fwd Port		
K-AS	1	Keel, Fwd Stbd		
K-BP	1	Keel, Mid Port		
K-BS	1	Keel, Mid Stbd		
K-CP	1	Keel, Aft Port		
K-CS	1	Keel, Aft Stbd		
TL	1	Transom Lip		
TR	1	Transom	Y	on Marks
	9	Total 1/2" parts		

~ Particulars ~  
 Hull LOA- 30' 6" (w/o Engines & Knees)  
 Beam- 10' (w/o Rub Rails)



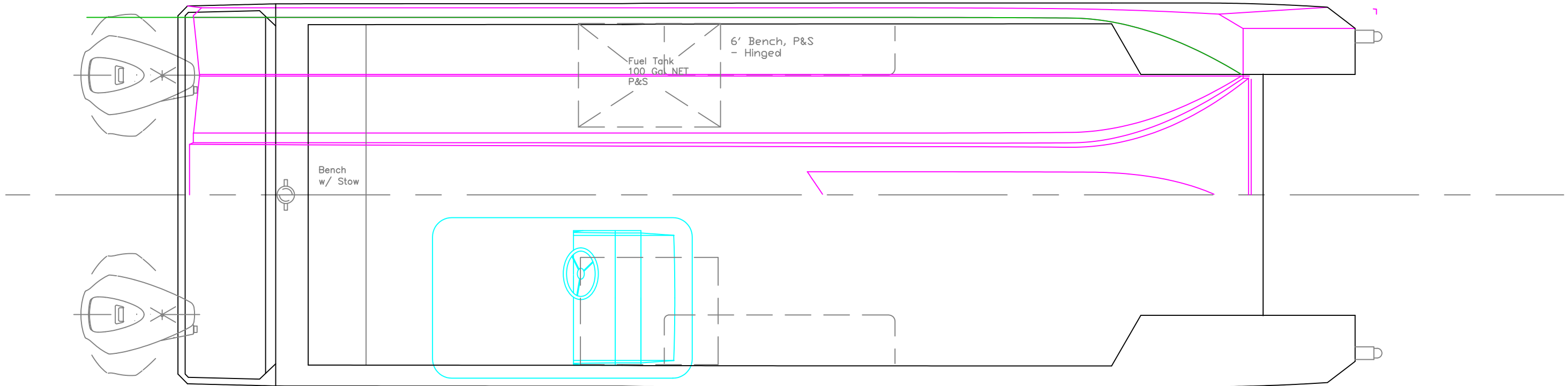
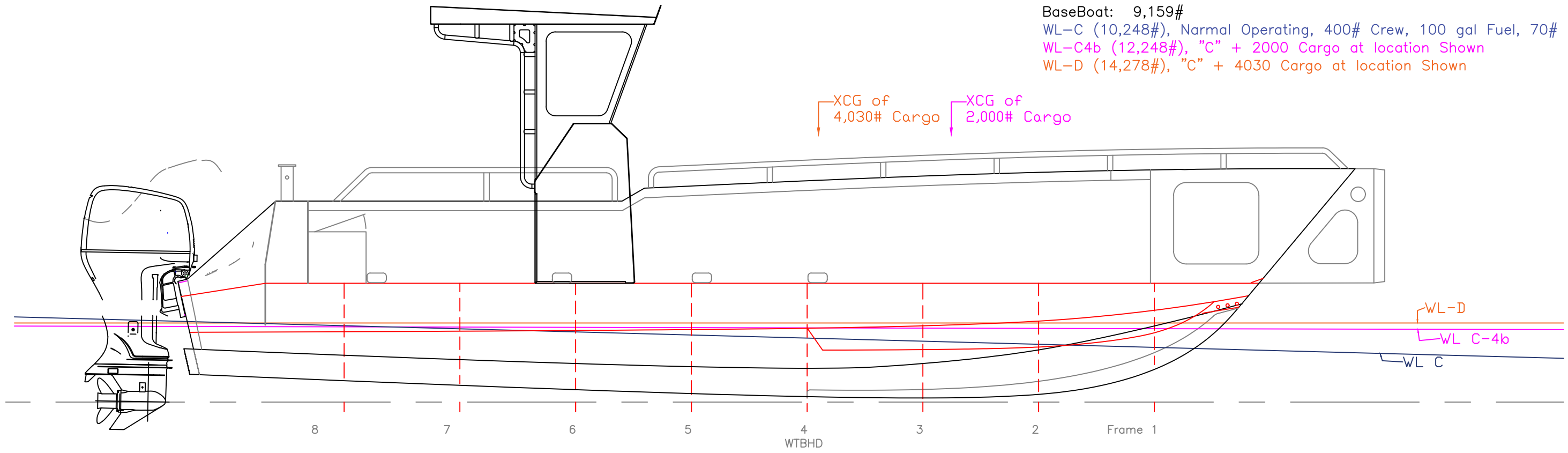
Drawings & NC Parts Files are provided to [redacted] for construction of the initial 2 boats only. Use of drawings & files for purposes other than constructing this boat is prohibited without the pre-payment of additional fees to Response Marine, Inc.

OUTBOARD PLAN & PROFILE

30.5'x10' Cat Landing Craft		
For: [redacted]		
SCALE 3/8" = 1'	DES/DWN WAL	DATE 9/10/18
Response Marine, Inc.		REV
Newburyport, MA, www.responsemarine.com		DWG NO. 578A-1

REV.	DESCRIPTION

BaseBoat: 9,159#  
 WL-C (10,248#), Normal Operating, 400# Crew, 100 gal Fuel, 70# Gear  
 WL-C4b (12,248#), "C" + 2000 Cargo at location Shown  
 WL-D (14,278#), "C" + 4030 Cargo at location Shown



INBOARD PLAN & PROFILE

30.5'x10' Cat Landing Craft

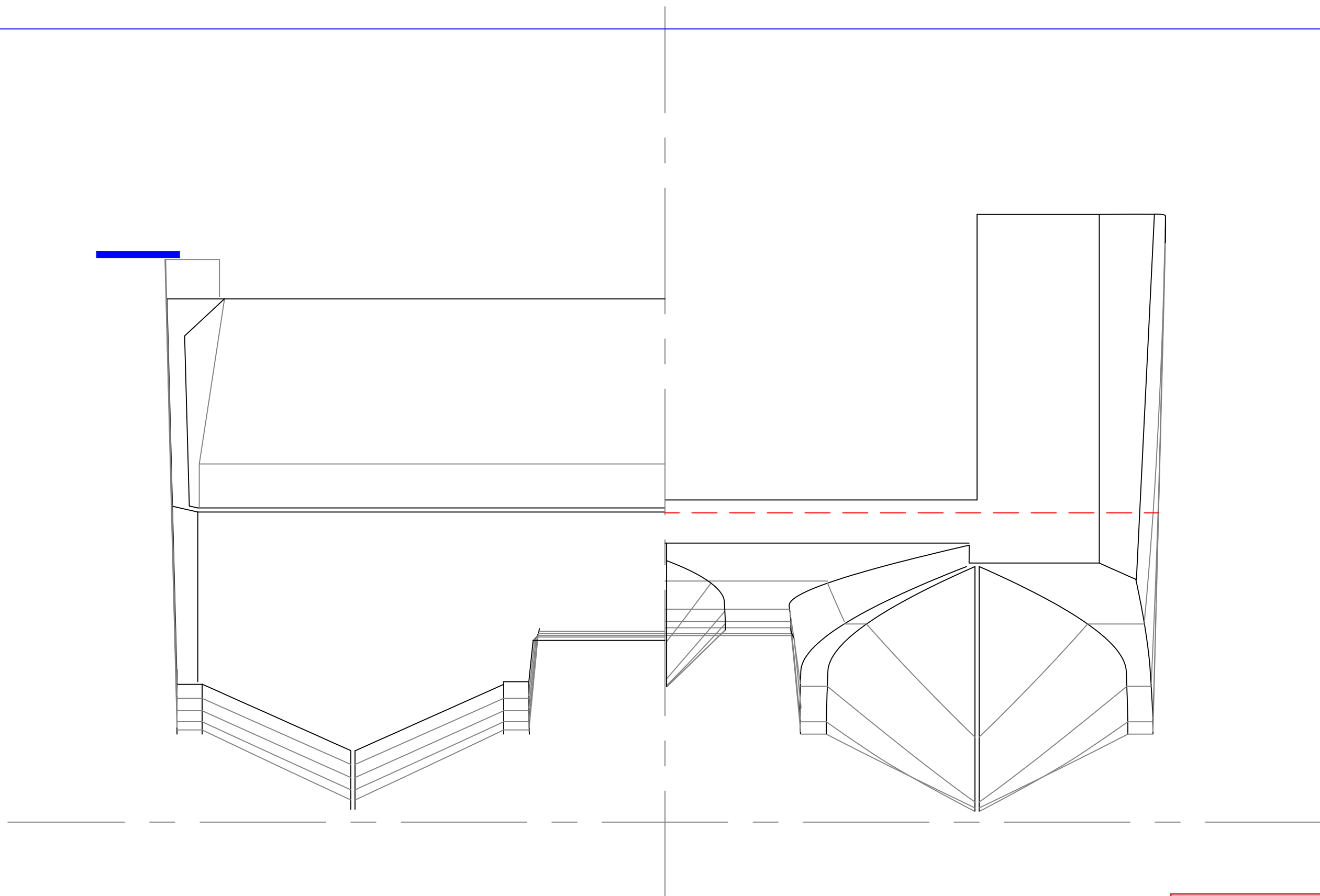
For: [Redacted]

SCALE 3/8" = 1' DES/DWN WAL DATE 9/10/18

REV [Redacted] **Response Marine, Inc.** DWG NO. 578A-2  
 Newburyport, MA, www.responsemarine.com

Drawings & NC Parts Files are provided to [Redacted] for construction of the initial 2 boats only. Use of drawings & files for purposes other than constructing this boat is prohibited without the pre-payment of additional fees to Response Marine, Inc.

REV. DESCRIPTION



BODY PLAN (Frames)

30.5'x10' Cat Landing Craft

For: [Redacted]

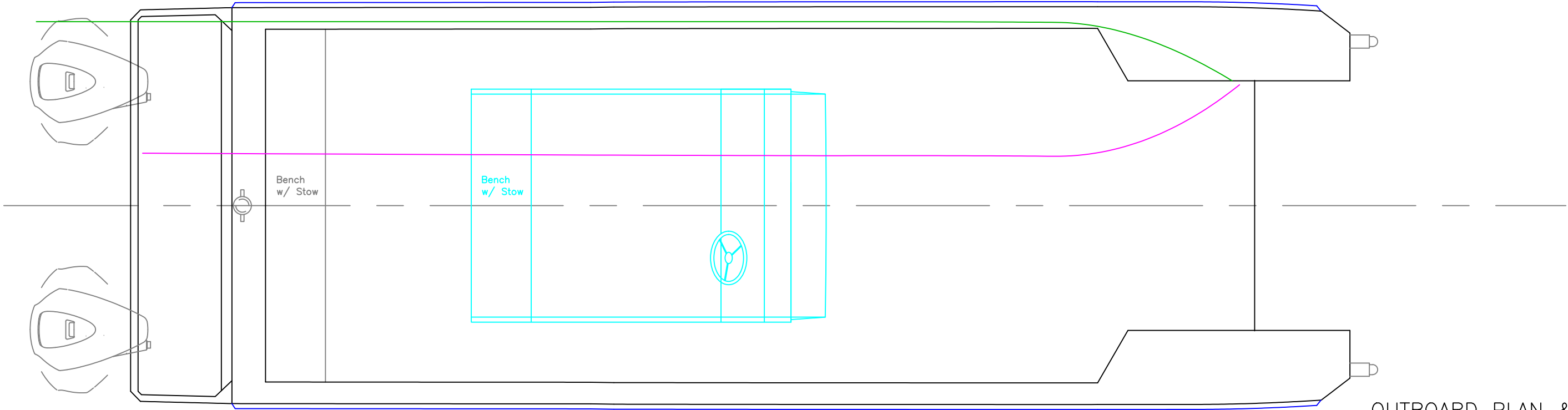
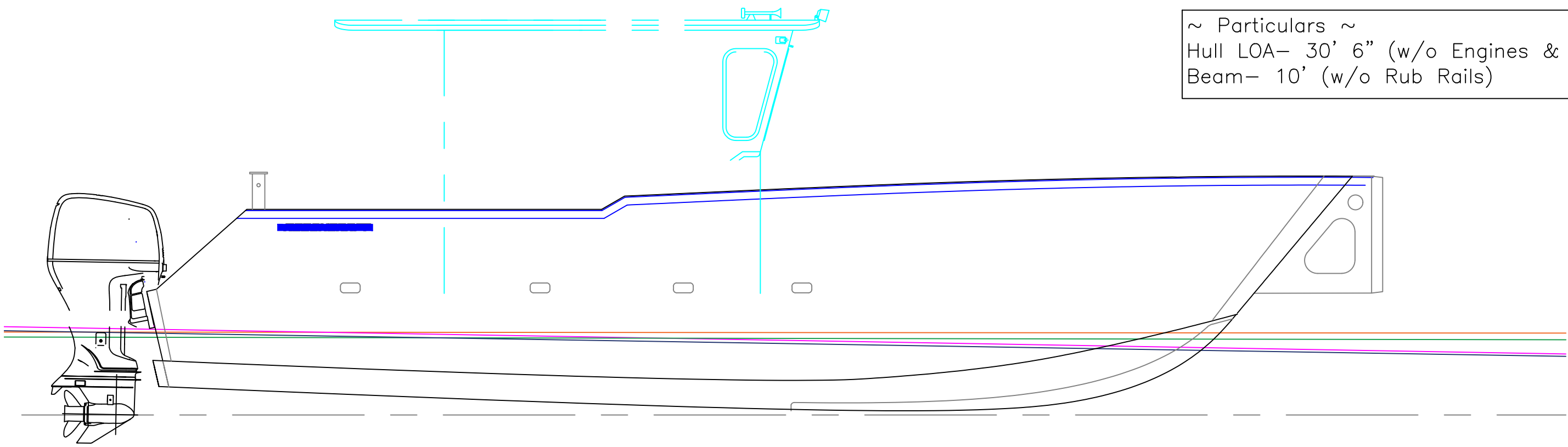
SCALE 1" = 1'	DES/DWN WAL	DATE 9/10/18
------------------	----------------	-----------------

<b>Response Marine, Inc.</b>	REV
Newburyport, MA, <a href="http://www.responsemarine.com">www.responsemarine.com</a>	DWG NO. 578AB-3

Drawings & NC Parts Files are provided to [Redacted] for construction of the initial 2 boats only. Use of drawings & files for purposes other than constructing this boat is prohibited without the pre-payment of additional fees to Response Marine, Inc.

REV.	DESCRIPTION

~ Particulars ~  
 Hull LOA- 30' 6" (w/o Engines & Knees)  
 Beam- 10' (w/o Rub Rails)



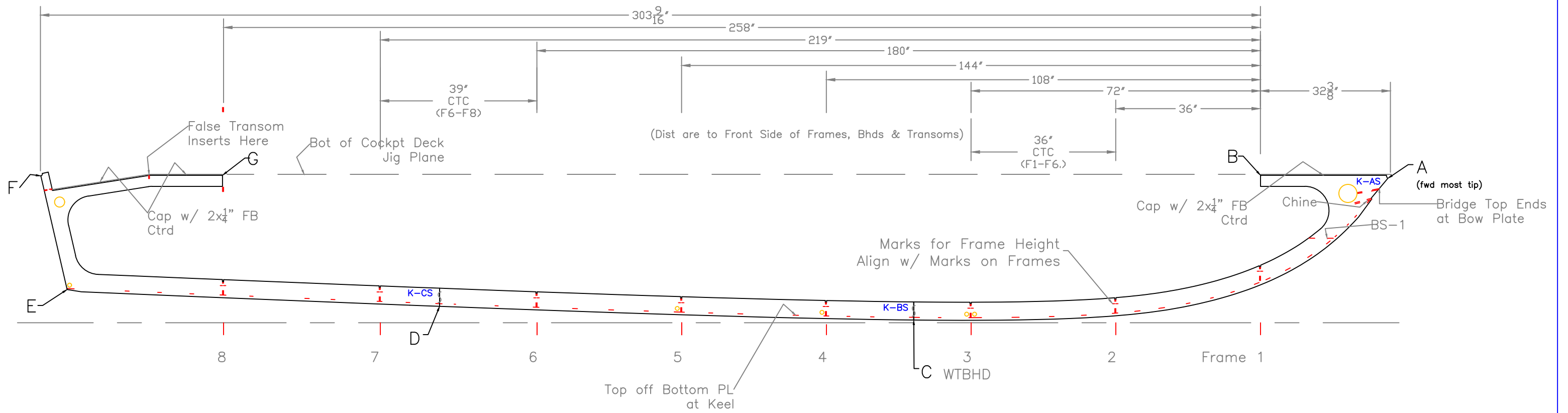
OUTBOARD PLAN & PROFILE

30.5'x10' Cat Landing Craft		
For: [REDACTED]		
SCALE 3/8" = 1'	DES/DWN WAL	DATE 9/10/18
<b>Response Marine, Inc.</b> Newburyport, MA, <a href="http://www.responsemarine.com">www.responsemarine.com</a>		REV DWG NO. 578B-1

Drawings & NC Parts Files are provided to [REDACTED] for construction of the initial 2 boats only. Use of drawings & files for purposes other than constructing this boat is prohibited without the pre-payment of additional fees to Response Marine, Inc.

REV.	DESCRIPTION





Response Marine, Inc.  
 Response # 578, Recon 30' CLC 9/7/18  
 OUTBOARD Keels Points

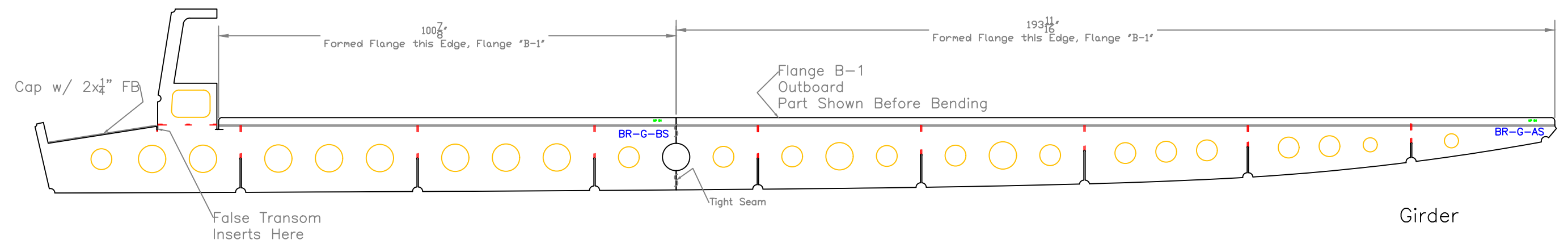
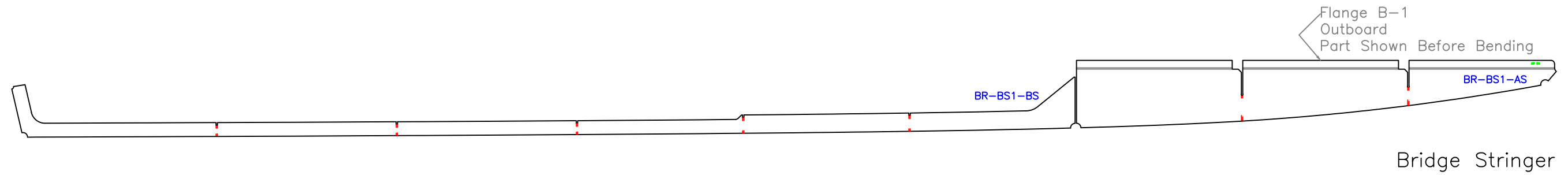
	Inches- sixteenths		Feet	
	Horizontal	Vertical	Horizontal	Vertical
A to Origin				
B to Origin				
C to Origin				
D to Origin				
E to Origin				
F to Origin				
G to Origin				
A to				
B to				
C to				
D to				
E to				
F to				

OUTBOARD KEELS LAYOUT  
 1/2" Plate

30.5'x10' Cat Landing Craft		
For: [REDACTED]		
SCALE 1/2" = 1'	DES/DWN WAL	DATE 9/10/18
Response Marine, Inc.		REV
Newburyport, MA, www.responsemarine.com		DWG NO. 578-2-1

Drawings & NC Parts Files are provided to [REDACTED] for construction of the initial 2 boats only. Use of drawings & files for purposes other than constructing this boat is prohibited without the pre-payment of additional fees to Response Marine, Inc.

REV.	DESCRIPTION



GIRDER & BRIDGE STRINGER

30.5'x10' Cat Landing Craft

For: [REDACTED]

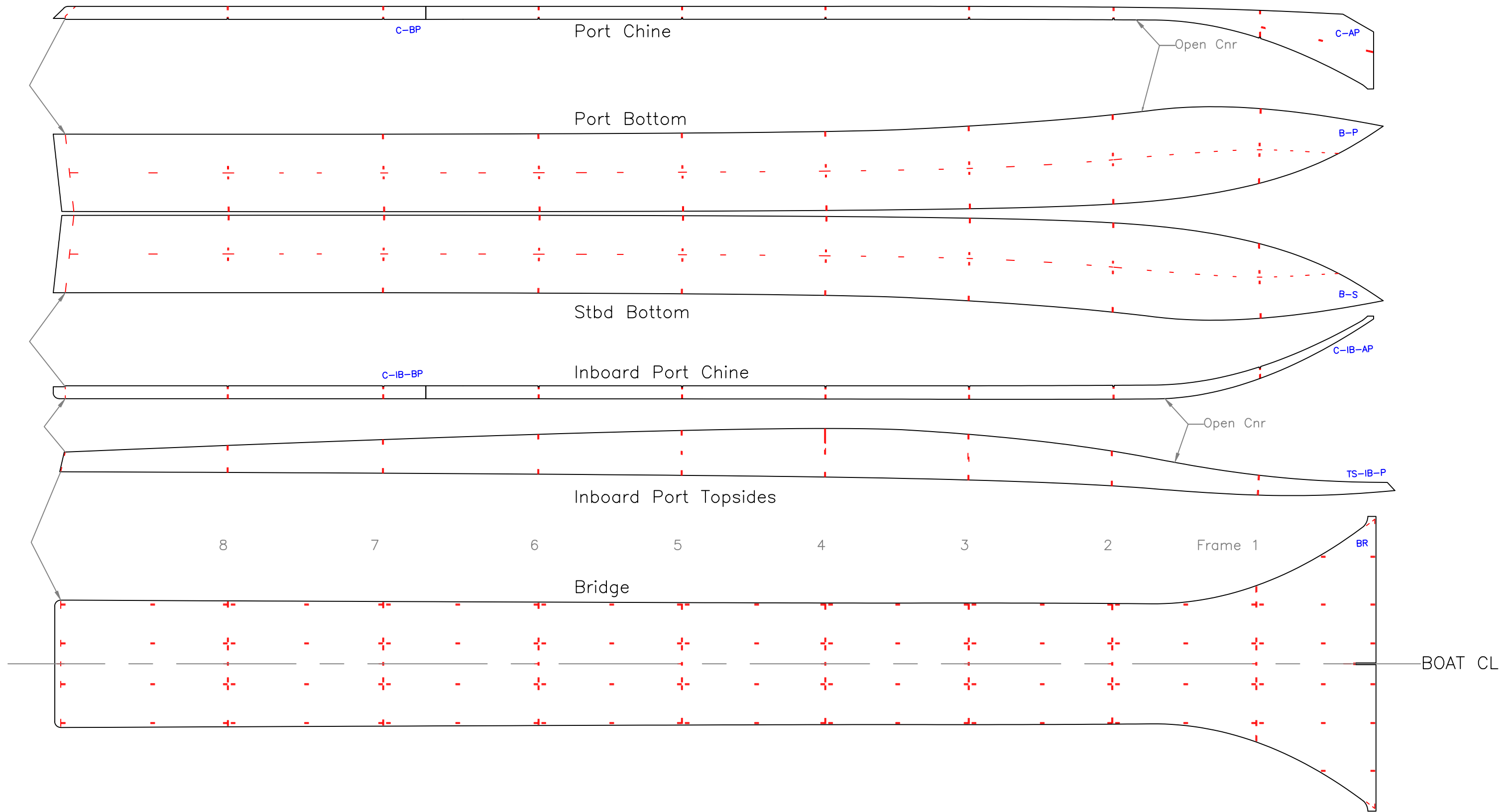
SCALE 1/2" = 1'	DES/DWN WAL	DATE 9/10/18
--------------------	----------------	-----------------

<b>Response Marine, Inc.</b>		REV
------------------------------	--	-----

Newburyport, MA, <a href="http://www.responsemarine.com">www.responsemarine.com</a>		DWG NO. 578-2-2
---	--	--------------------

Drawings & NC Parts Files are provided to [REDACTED] for construction of the initial 2 boats only. Use of drawings & files for purposes other than constructing this boat is prohibited without the pre-payment of additional fees to Response Marine, Inc.

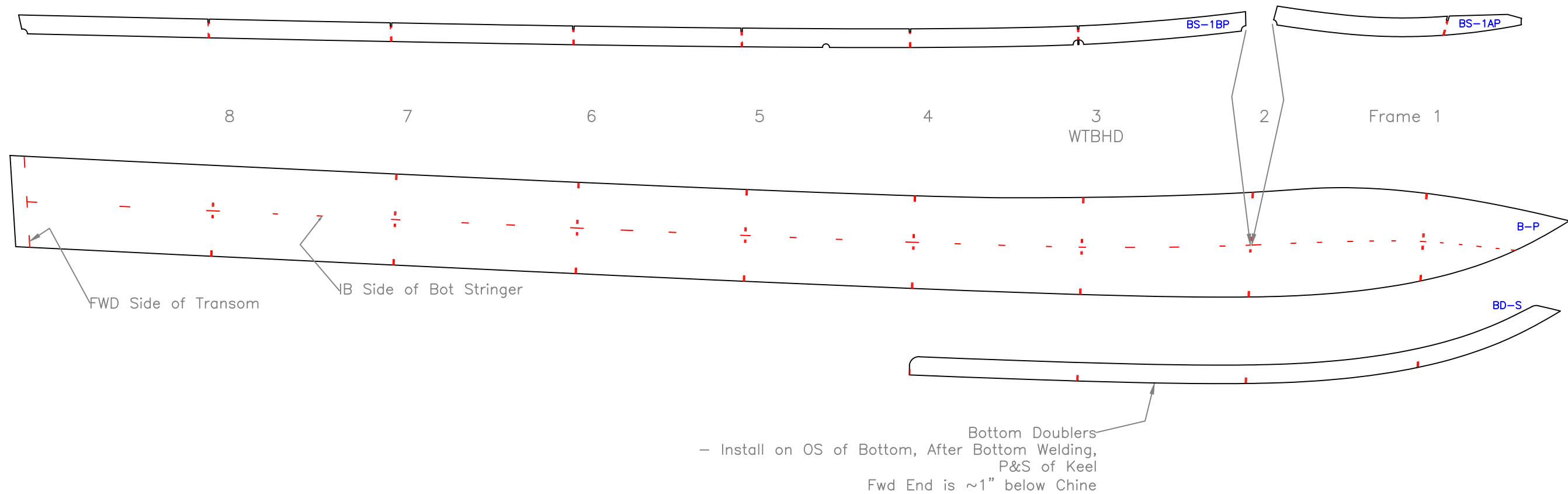
REV.	DESCRIPTION



Drawings & NC Parts Files are provided to [redacted] for construction of the initial 2 boats only. Use of drawings & files for purposes other than constructing this boat is prohibited without the pre-payment of additional fees to Response Marine, Inc.

<b>BOTTOM SKINS</b>		
30.5'x10' Cat Landing Craft		
For: [redacted]		
SCALE 1/2" = 1'	DES/DWN WAL	DATE 9/10/18
<b>Response Marine, Inc.</b>		REV
Newburyport, MA, <a href="http://www.responsemarine.com">www.responsemarine.com</a>		DWG NO. 578-2-3

REV.	DESCRIPTION

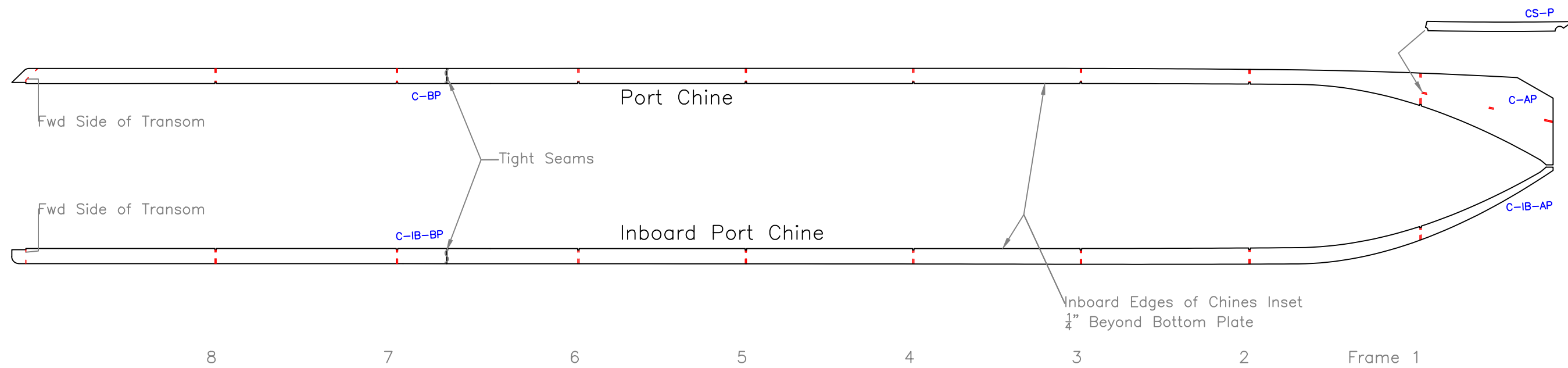


Drawings & NC Parts Files are provided to [redacted] for construction of the initial 2 boats only. Use of drawings & files for purposes other than constructing this boat is prohibited without the pre-payment of additional fees to Response Marine, Inc.

**BOTTOM PLATE LAYOUT**

30.5'x10' Cat Landing Craft		
For: [redacted]		
SCALE 1/2" = 1'	DES/DWN WAL	DATE 9/10/18
<b>Response Marine, Inc.</b> Newburyport, MA, <a href="http://www.responsemarine.com">www.responsemarine.com</a>		REV DWG NO. 578-2-4

REV.	DESCRIPTION



Drawings & NC Parts Files are provided to [redacted] for construction of the initial 2 boats only. Use of drawings & files for purposes other than constructing this boat is prohibited without the pre-payment of additional fees to Response Marine, Inc.

### CHINE PLATE LAYOUT

30.5'x10' Cat Landing Craft

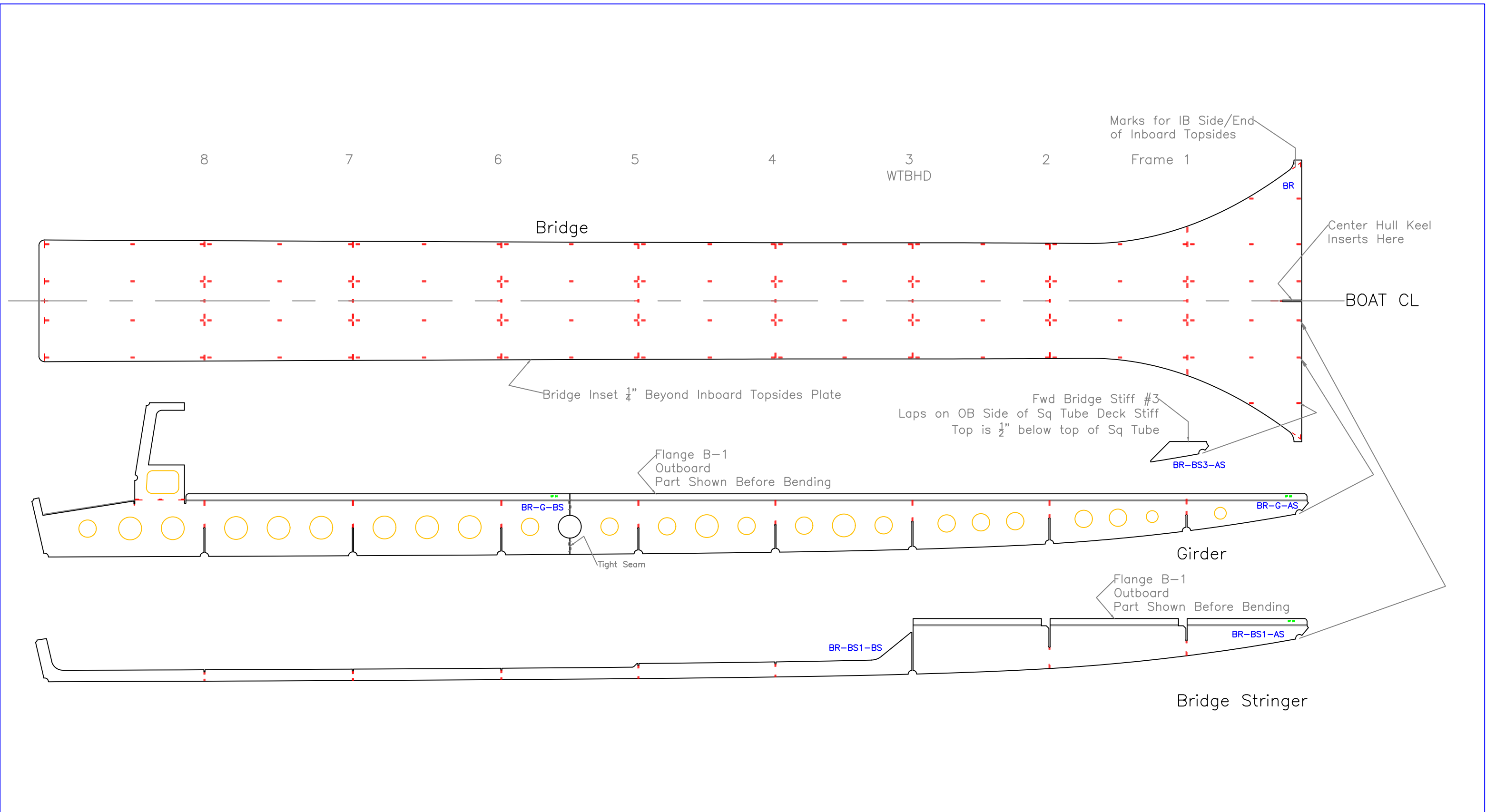
For: [redacted]

SCALE 1/2" = 1'	DES/DWN WAL	DATE 9/10/18
--------------------	----------------	-----------------

REV	DESCRIPTION	Response Marine, Inc. Newburyport, MA, www.responsemarine.com
-----	-------------	--

DWG NO. 578-2-5
--------------------

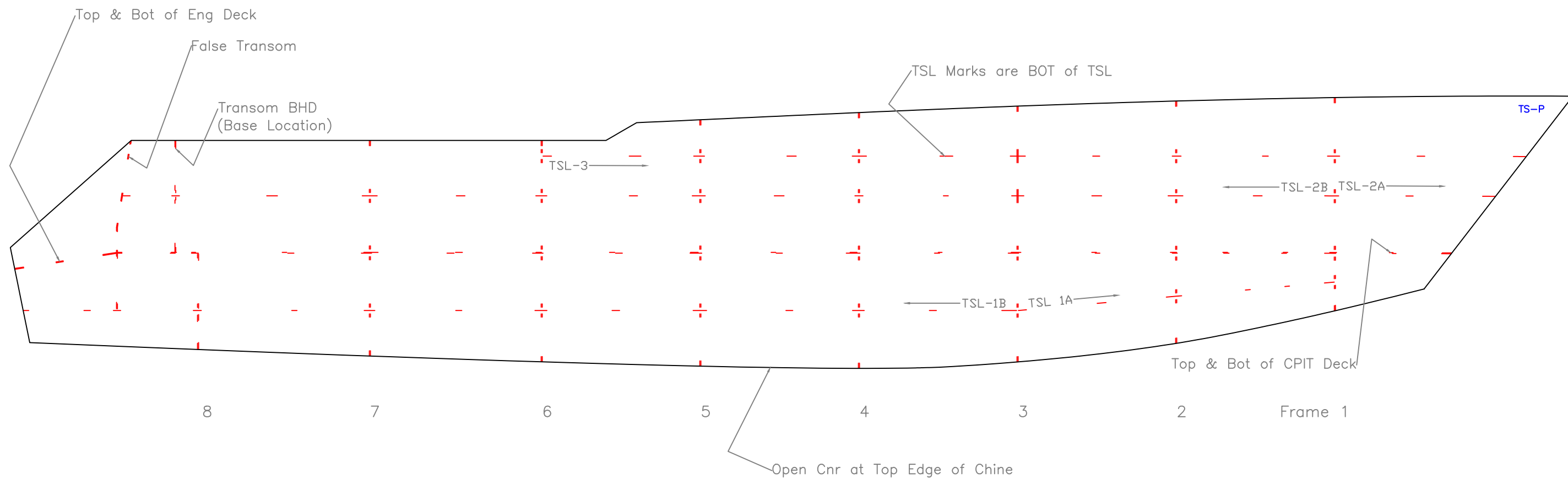
REV.	DESCRIPTION
------	-------------



Drawings & NC Parts Files are provided to [redacted] for construction of the initial 2 boats only. Use of drawings & files for purposes other than constructing this boat is prohibited without the pre-payment of additional fees to Response Marine, Inc.

BRIDGE PLATE LAYOUT		
30.5'x10' Cat Landing Craft		
For: [redacted]		
SCALE 1/2" = 1'	DES/DWN WAL	DATE 9/10/18
<b>Response Marine, Inc.</b> Newburyport, MA, <a href="http://www.responsemarine.com">www.responsemarine.com</a>		REV DWG NO. 578-2-6

REV.	DESCRIPTION



TOPSIDE PLATE LAYOUT

30.5'x10' Cat Landing Craft

For: [Redacted]

SCALE 1/2" = 1'	DES/DWN WAL	DATE 9/10/18
--------------------	----------------	-----------------

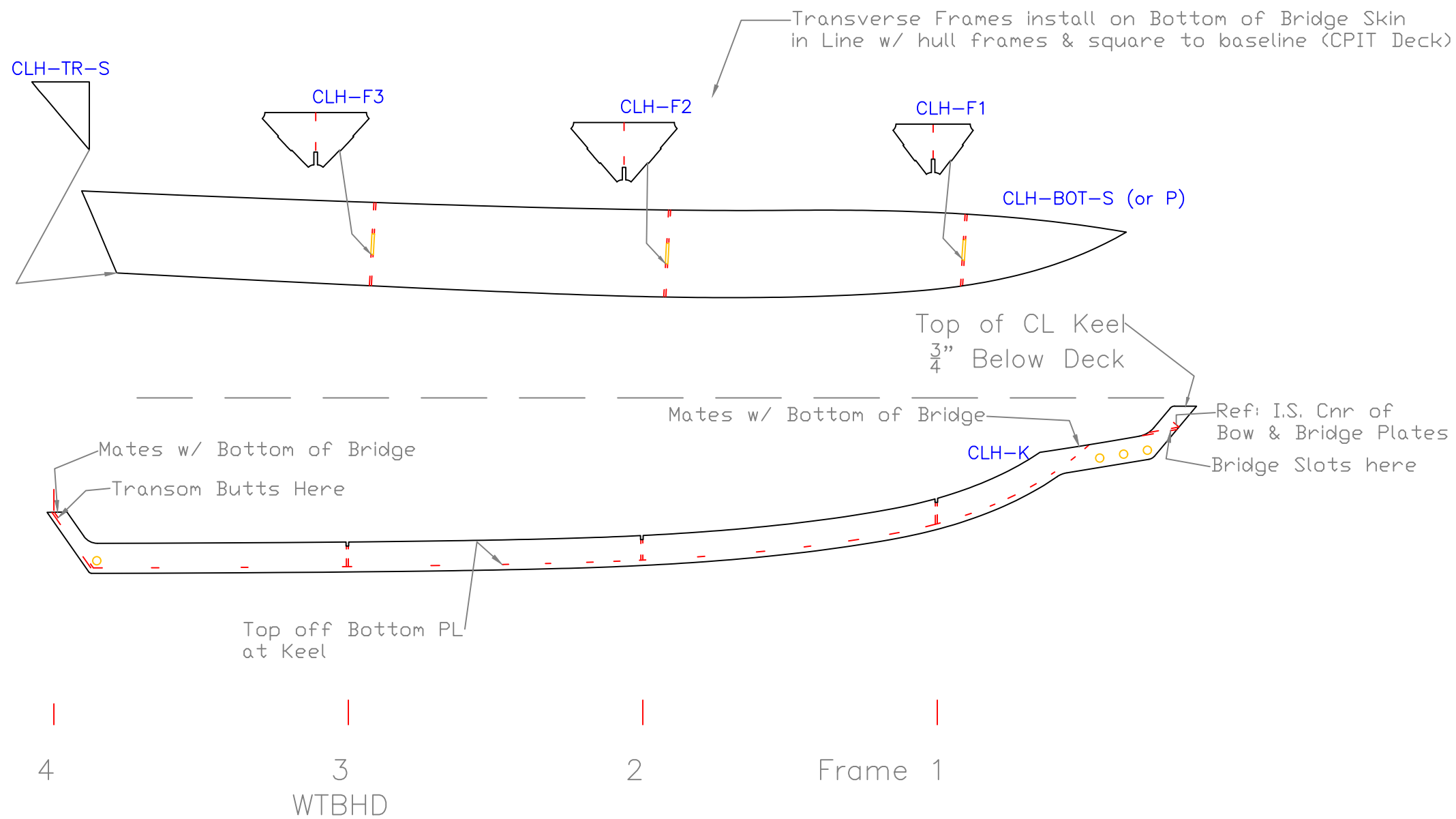
REV	DESCRIPTION	REV
-----	-------------	-----

**Response Marine, Inc.**  
Newburyport, MA, [www.responsemarine.com](http://www.responsemarine.com)

DWG NO. 578-2-7

Drawings & NC Parts Files are provided to [Redacted] for construction of the initial 2 boats only. Use of drawings & files for purposes other than constructing this boat is prohibited without the pre-payment of additional fees to Response Marine, Inc.

REV.	DESCRIPTION



CENTER HULL LAYOUT

30.5'x10' Cat Landing Craft

For: [REDACTED]

SCALE 3/4" = 1'	DES/DWN WAL	DATE 9/10/18
--------------------	----------------	-----------------

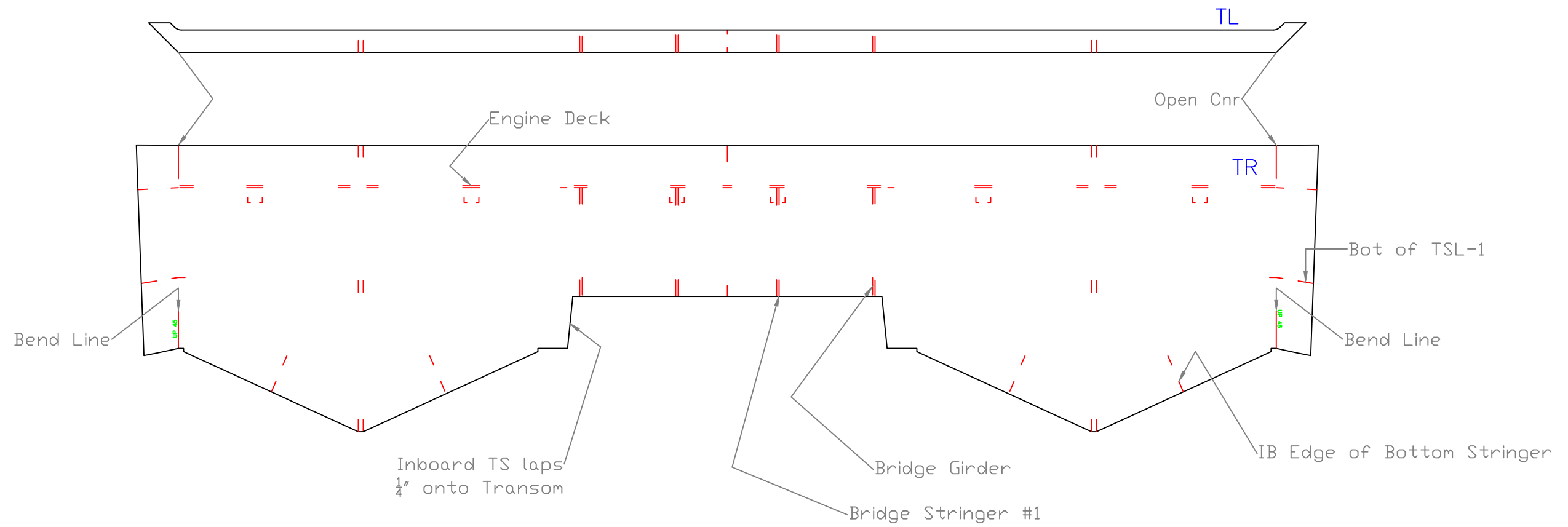
REV	DESCRIPTION
-----	-------------

**Response Marine, Inc.**  
Newburyport, MA, [www.responsemarine.com](http://www.responsemarine.com)

DWG NO. 578-2-8

Drawings & NC Parts Files are provided to [REDACTED] for construction of the initial 2 boats only. Use of drawings & files for purposes other than constructing this boat is prohibited without the pre-payment of additional fees to Response Marine, Inc.





TRANSOM

30.5'x10' Cat Landing Craft

For: [REDACTED]

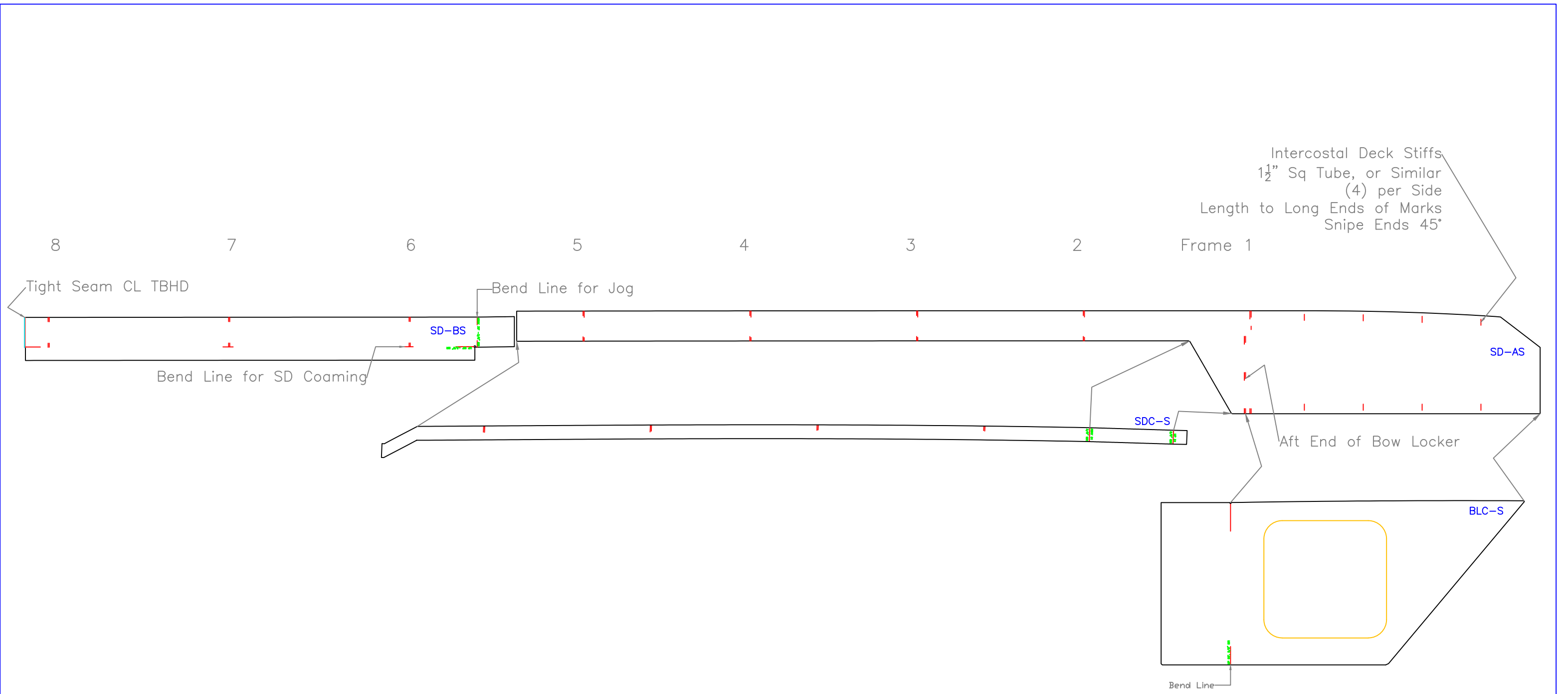
SCALE 1" = 1'	DES/DWN WAL	DATE 9/10/18
------------------	----------------	-----------------

REV	DESCRIPTION	Response Marine, Inc.
-----	-------------	-----------------------

Newburyport, MA, <a href="http://www.responsemarine.com">www.responsemarine.com</a>	DWG NO. 578-2-10
---	---------------------

Drawings & NC Parts Files are provided to [REDACTED] for construction of the initial 2 boats only. Use of drawings & files for purposes other than constructing this boat is prohibited without the pre-payment of additional fees to Response Marine, Inc.

REV.	DESCRIPTION

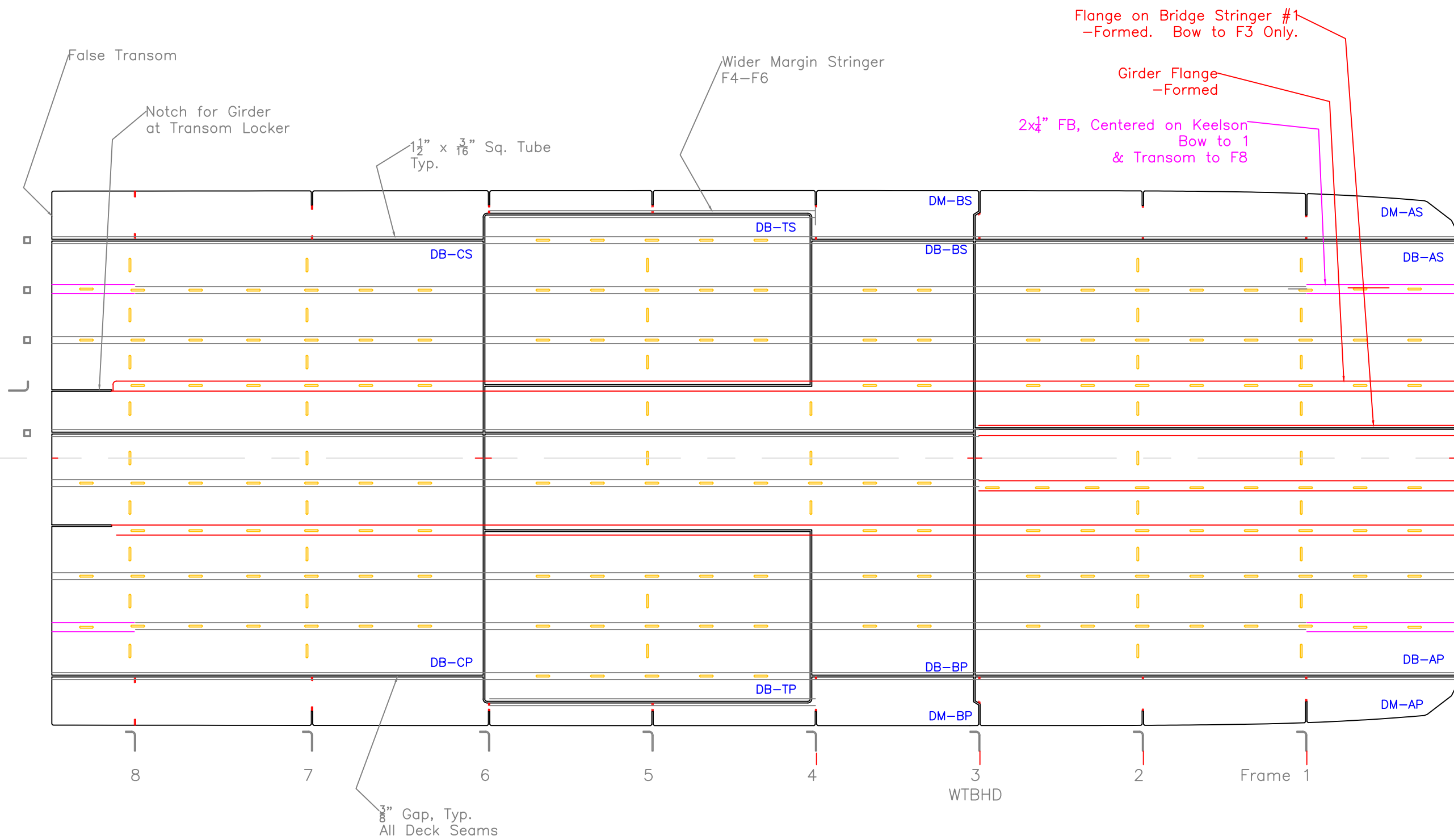


Drawings & NC Parts Files are provided to [redacted] for construction of the initial 2 boats only. Use of drawings & files for purposes other than constructing this boat is prohibited without the pre-payment of additional fees to Response Marine, Inc.

REV.	DESCRIPTION

### SIDE DECKS & COAMINGS

30.5'x10' Cat Landing Craft		
For: [redacted]		
SCALE 1/2" = 1'	DES/DWN WAL	DATE 9/10/18
<b>Response Marine, Inc.</b> Newburyport, MA, <a href="http://www.responsemarine.com">www.responsemarine.com</a>		REV 
		DWG NO. 578-2-11

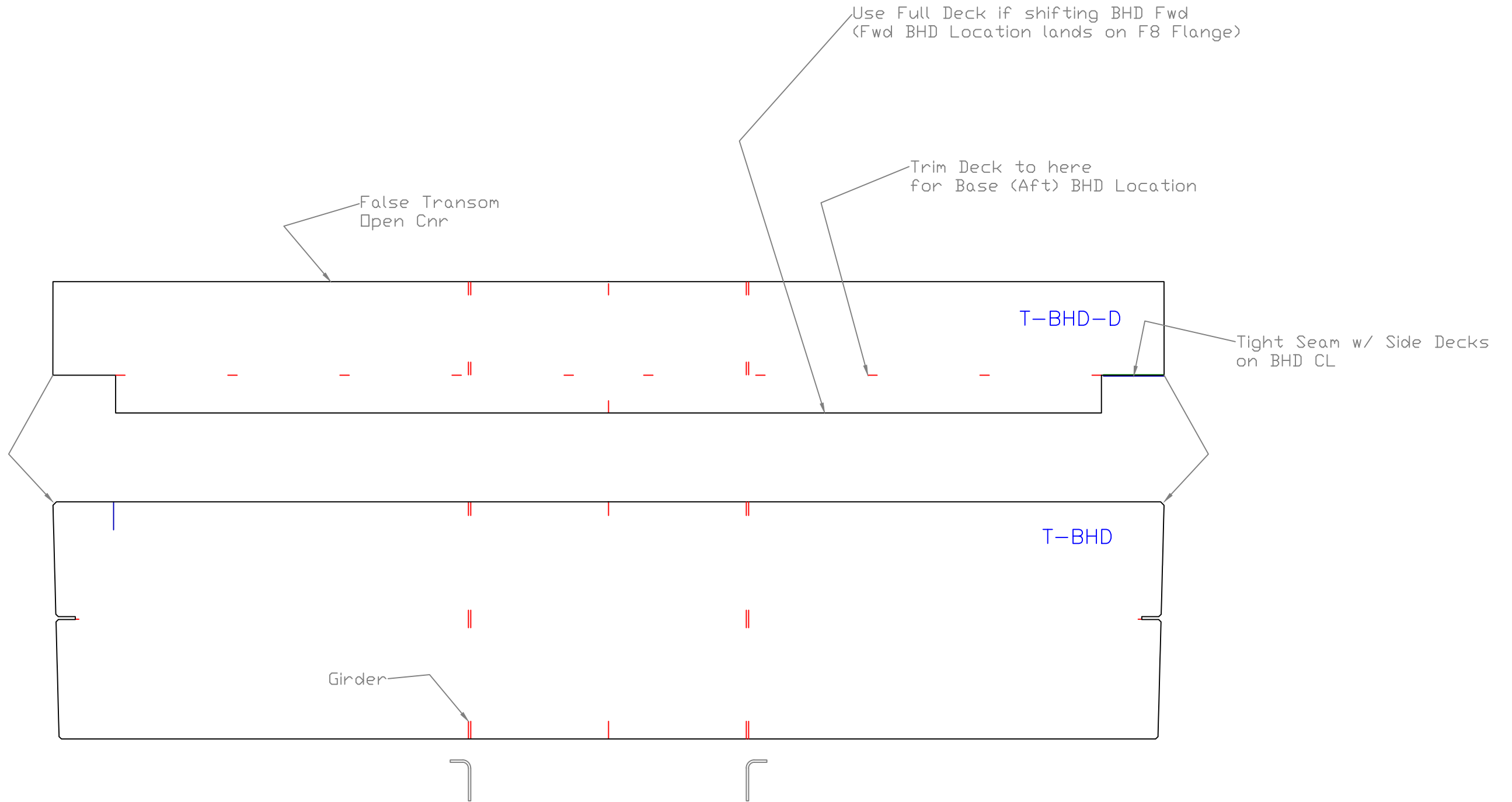


Drawings & NC Parts Files are provided to [redacted] for construction of the initial 2 boats only. Use of drawings & files for purposes other than constructing this boat is prohibited without the pre-payment of additional fees to Response Marine, Inc.

**COCKPIT DECK**  
30.5'x10' Cat Landing Craft

For: [redacted]		DATE
SCALE	DES/DWN	9/10/18
1/2" = 1'	WAL	
<b>Response Marine, Inc.</b>		REV
Newburyport, MA <a href="http://www.responsemarine.com">www.responsemarine.com</a>		DWG NO. 578-2-12

REV.	DESCRIPTION



Drawings & NC Parts Files are provided to [redacted] for construction of the initial 2 boats only. Use of drawings & files for purposes other than constructing this boat is prohibited without the pre-payment of additional fees to Response Marine, Inc.

TRANSOM LKR & DECK

30.5'x10' Cat Landing Craft

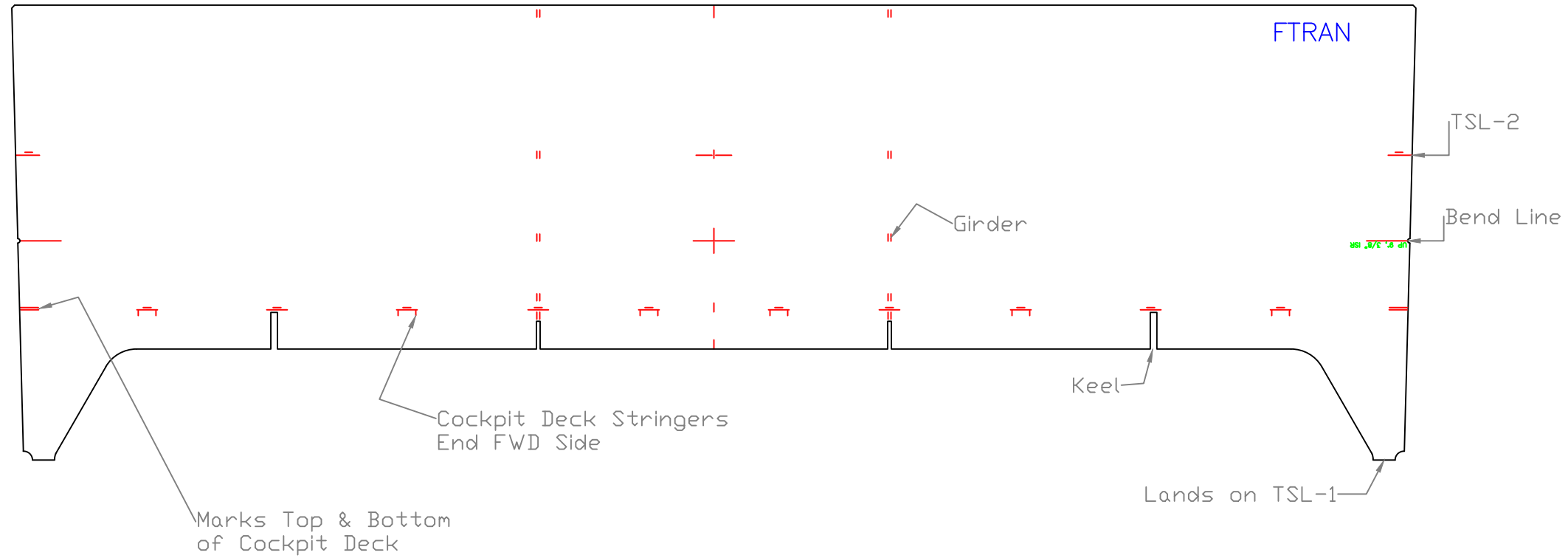
For: [redacted]

SCALE 1" = 1'	DES/DWN WAL	DATE 9/10/18
------------------	----------------	-----------------

REV	DESCRIPTION	REV
-----	-------------	-----

**Response Marine, Inc.**  
Newburyport, MA, www.responsemarine.com

DWG NO. 578-2-13



FALSE TRANSOM

30.5'x10' Cat Landing Craft

For: [Redacted]

SCALE 1" = 1'	DES/DWN WAL	DATE 9/10/18
------------------	----------------	-----------------

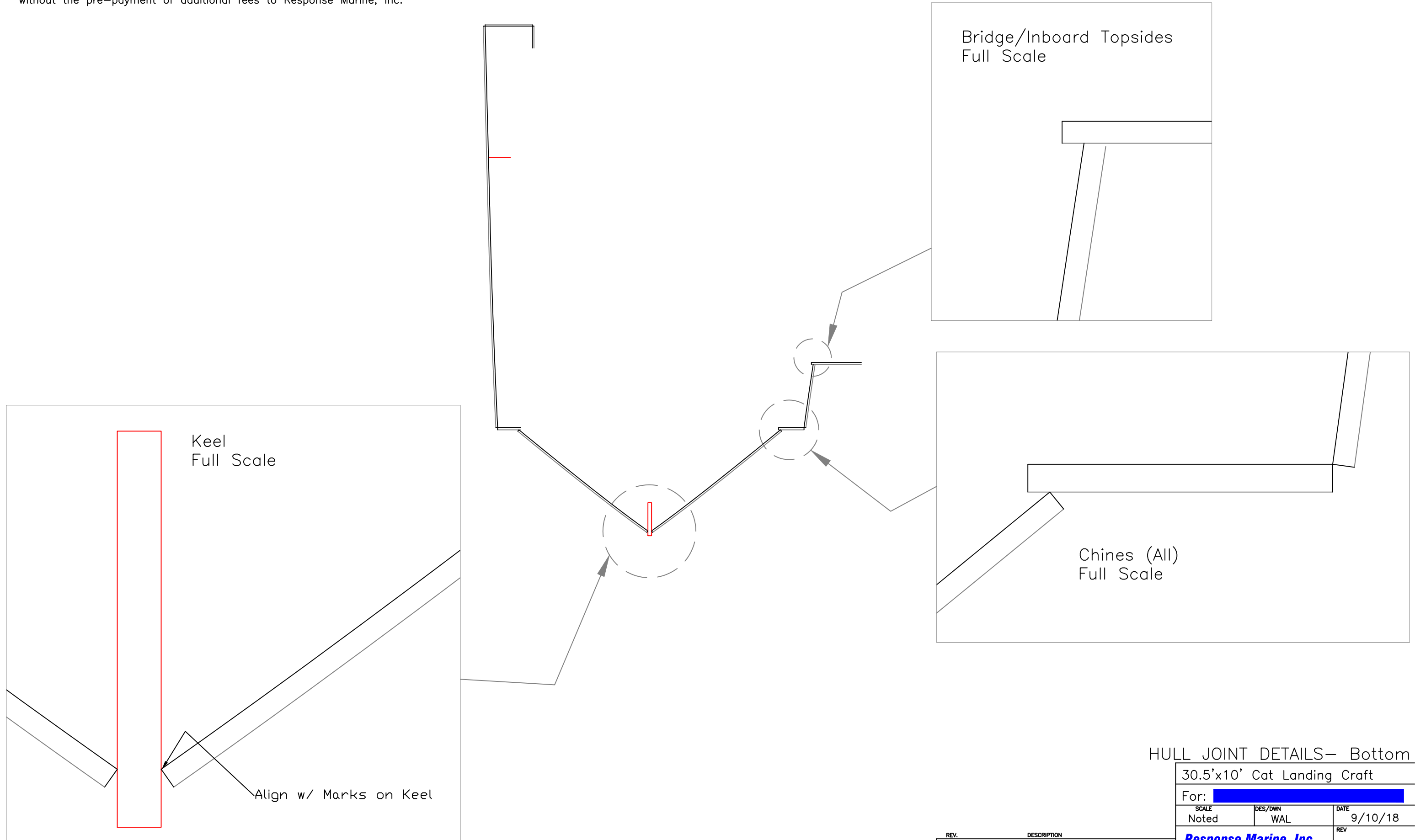
REV	DESCRIPTION	Response Marine, Inc.
-----	-------------	-----------------------

Newburyport, MA, www.responsemarine.com	DWG NO. 578-2-14
---	---------------------

Drawings & NC Parts Files are provided to [Redacted] for construction of the initial 2 boats only. Use of drawings & files for purposes other than constructing this boat is prohibited without the pre-payment of additional fees to Response Marine, Inc.

REV. DESCRIPTION

Drawings & NC Parts Files are provided to [redacted] for construction of the initial 2 boats only.  
 Use of drawings & files for purposes other than constructing this boat is prohibited  
 without the pre-payment of additional fees to Response Marine, Inc.



HULL JOINT DETAILS- Bottom

30.5'x10' Cat Landing Craft		
For: [redacted]		
SCALE Noted	DES/DWN WAL	DATE 9/10/18
<b>Response Marine, Inc.</b> Newburyport, MA, <a href="http://www.responsemarine.com">www.responsemarine.com</a>		REV DWG NO. 578-CR-1

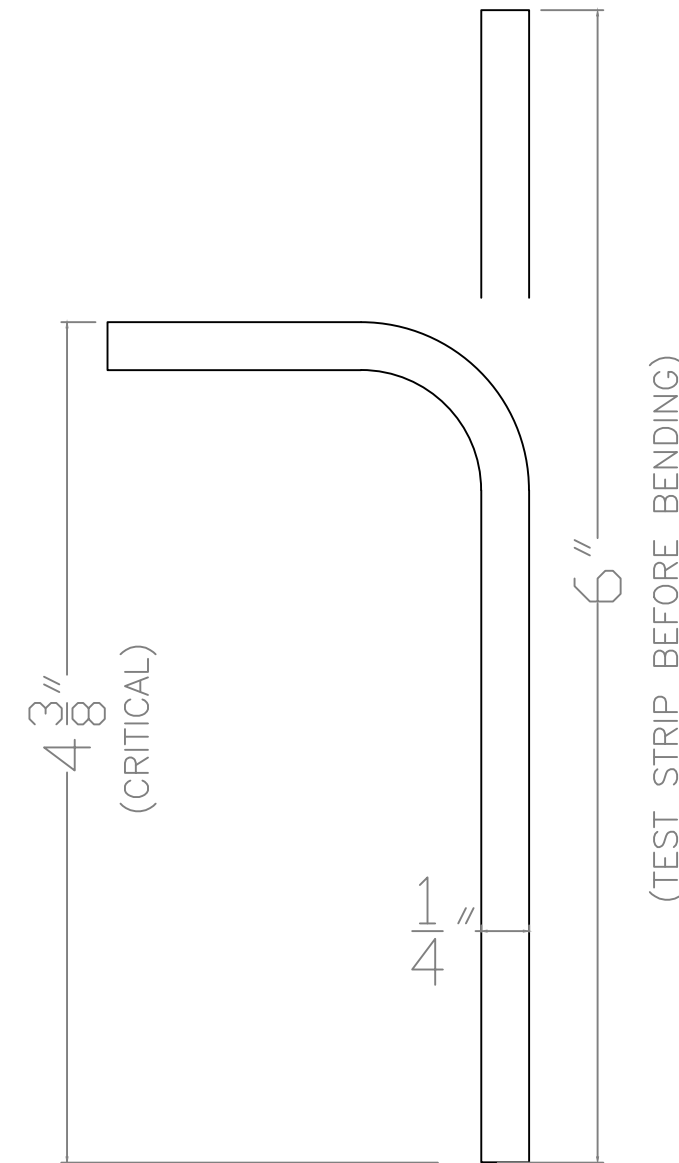
REV.	DESCRIPTION

- BR-BS1-AP Bridge Stringer #1, Bow to F3, 5" off CL, Port
- BR-BS1-AS Bridge Stringer #1, Bow to F3, 5" off CL, Stbd
- BR-G-AP Bridge Girder, Bow to aft of F5, Port
- BR-G-AS Bridge Girder, Bow to aft of F5, Stbd
- BR-G-BP Bridge Girder, aft of F5 to Transom, Port
- BR-G-BS Bridge Girder, aft of F5 to Transom, Stbd
- F1 Frame 1
- F1-P Frame 1, upper Port
- F1-S Frame 1, upper Stbd
- F2 Frame 2
- F2-P Frame 2, upper Port
- F2-S Frame 2, upper Stbd
- F3 Frame 3
- F3-P Frame 3, Upper Port
- F3-S Frame 3, Upper Stbd
- F4 Frame 4
- F4-P Frame 4, Upper Port
- F4-S Frame 4, Upper Stbd
- F5 Frame 5
- F5-P Frame 5, upper Port
- F5-S Frame 5, upper Stbd
- F6 Frame 6
- F6-P Frame 6, upper Port
- F6-S Frame 6, upper Stbd
- F7 Frame 7
- F7-P Frame 7, upper Port
- F7-S Frame 7, upper Stbd
- F8 Frame 8

Total QTY= 28, 1 each

STANDARD FLANGE BENDING:  $\frac{1}{4}$ " 5086/83 H116 Stock

- 1) Confirm results for dimensions and cracking with test strips before bending parts.
  - 2) Expected Die Radius is  $\frac{5}{8}$ "
  - 3) Flanges are designed for outside major flange length of  $1\frac{5}{8}$ " less than flat stock length as shown.
  - 4) Adjust & Confirm back gauge based on test strips.
- Parts to be flanged per this same set-up are listed at left.



FORMING: FLANGE "B-1"

30.5'x10' Cat Landing Craft

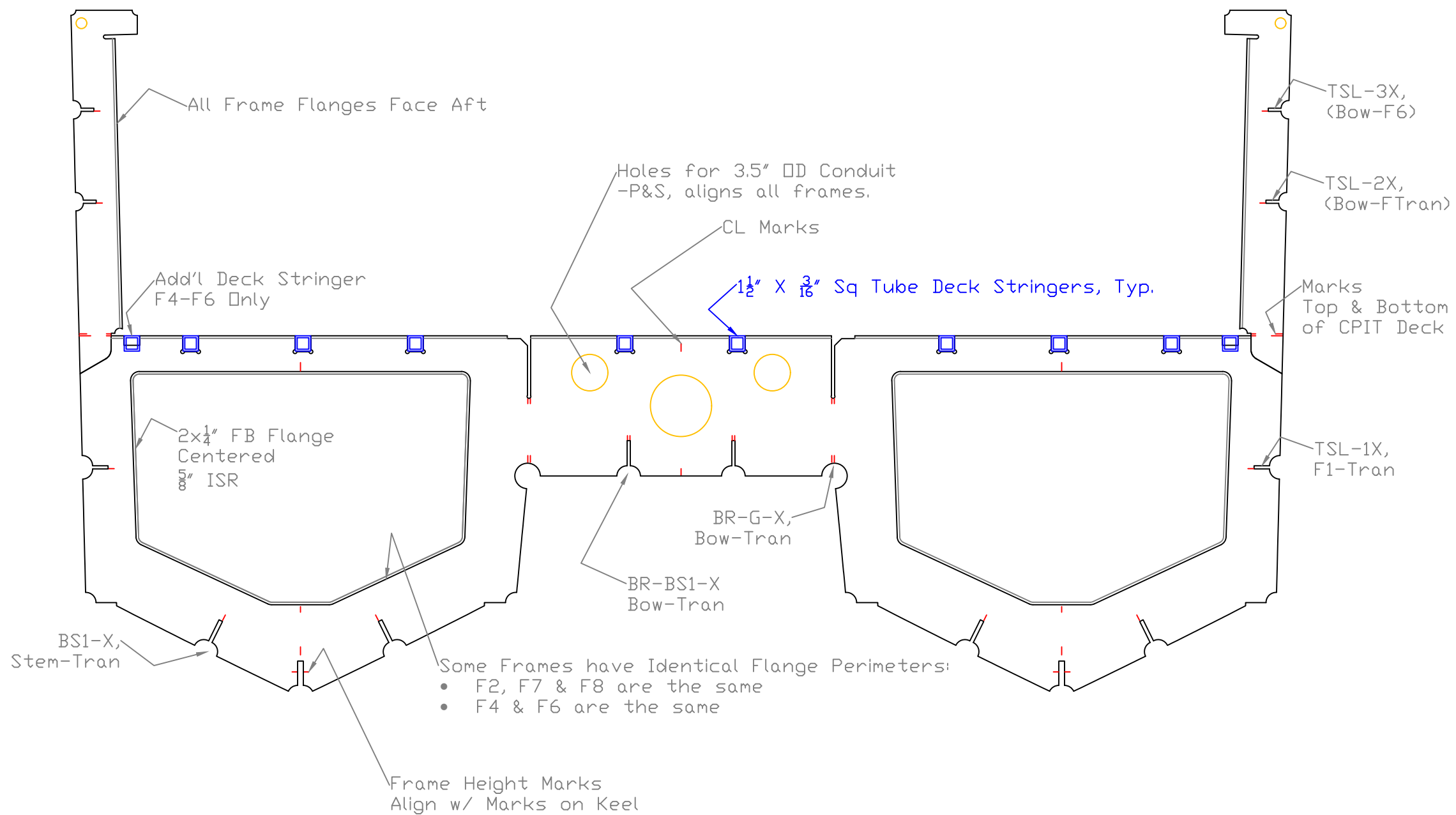
For: [REDACTED]

SCALE FULL	DES/DWN WAL	DATE 9/10/18
---------------	----------------	-----------------

REV.	DESCRIPTION
------	-------------

**Response Marine, Inc.**  
Newburyport, MA, [www.responsemarine.com](http://www.responsemarine.com) DWG NO: 578-B-1

Drawings & NC Parts Files are provided to [REDACTED] for construction of the initial 2 boats only. Use of drawings & files for purposes other than constructing this boat is prohibited without the pre-payment of additional fees to Response Marine, Inc.



TYPICAL FRAME

30.5'x10' Cat Landing Craft

For: [REDACTED]

SCALE 1"=1'	DES/DWN WAL	DATE 9/10/18
----------------	----------------	-----------------

REV	DESCRIPTION	REV
-----	-------------	-----

**Response Marine, Inc.**  
Newburyport, MA, [www.responsemarine.com](http://www.responsemarine.com)

DWG NO. 578-FR-1

Drawings & NC Parts Files are provided to [REDACTED] for construction of the initial 2 boats only. Use of drawings & files for purposes other than constructing this boat is prohibited without the pre-payment of additional fees to Response Marine, Inc.