

Waterlines:

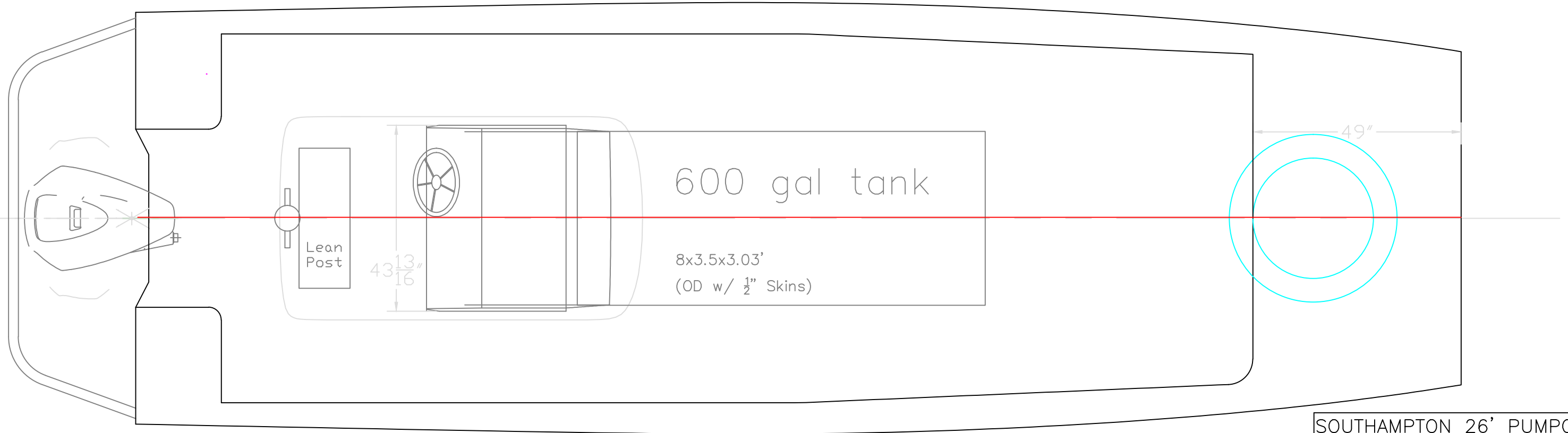
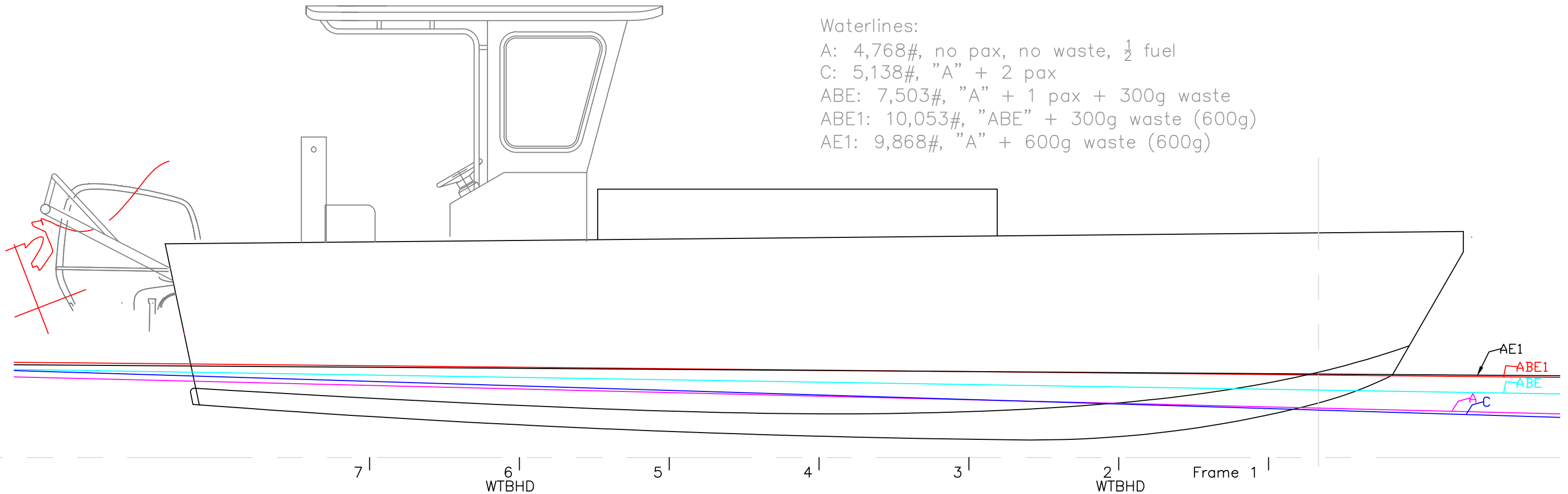
A: 4,768#, no pax, no waste, 1/2 fuel

C: 5,138#, "A" + 2 pax

ABE: 7,503#, "A" + 1 pax + 300g waste

ABE1: 10,053#, "ABE" + 300g waste (600g)

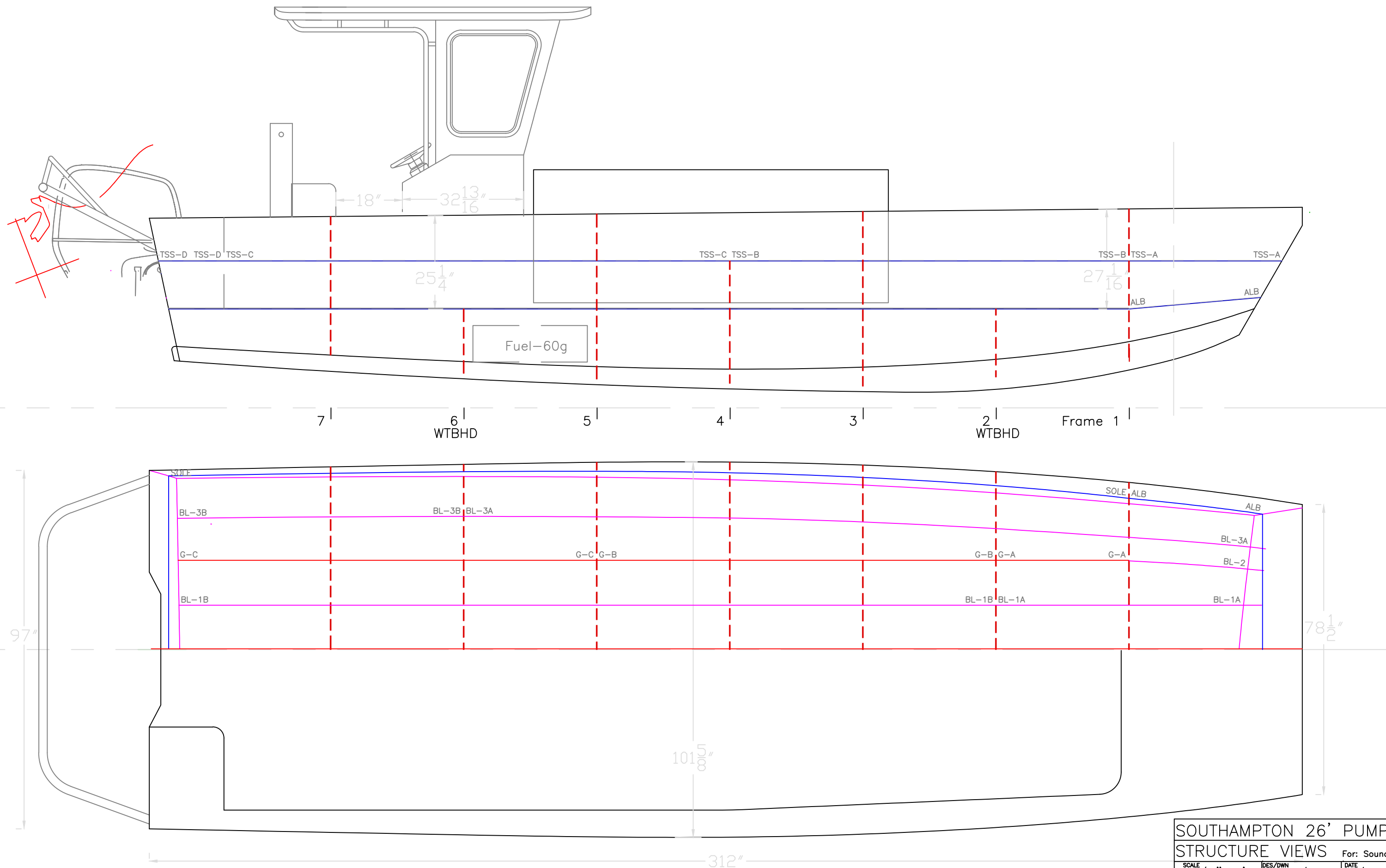
AE1: 9,868#, "A" + 600g waste (600g)



This drawing represents significant intellectual property of Response Marine, Inc. Reproduction of this drawing in any form, in whole or in part, including transmissions of any type, to third parties is forbidden without the prior written consent of Response Marine, Inc.

REV.	DESCRIPTION

SOUTHAMPTON 26' PUMPOUT		
For: Sound Marine		
SCALE 1/2"=1'	DES/DWN WAL/JCC	DATE 5/10/13
Response Marine, Inc.		REV
Newburyport, MA, www.responsemarine.com		DWG NO. 449-01



This drawing represents significant intellectual property of Response Marine, Inc. Reproduction of this drawing in any form, in whole or in part, including transmissions of any type, to third parties is forbidden without the prior written consent of Response Marine, Inc.

REV.	DESCRIPTION

SOUTHAMPTON 26' PUMPOUT		
STRUCTURE VIEWS		
For: Sound Marine		DATE
SCALE	DES/DWN	5/10/13
1/2"=1'	WAL/JCC	REV
Response Marine, Inc.		DWG NO.
Newburyport, MA, www.responsemarine.com		449-02