

DRAWING LIST

Delivered	Design	Dwg	Description	Customer	Date
CPM Constructors 24' Workboat	467	-01	Ourboard Views		2/6/14
		-02	Inboard Views		2/12/14
		-03	Skins Structure		2/10/14
		-2-01	Keel Drawing		2/7/14
		-2-02	Skin Layout		2/7/14
		-2-03	Side Deck Layout		2/7/14
		-2-04	Cockpit Sole Layout		2/7/14
		-2-05	SD Sheathing Layout		2/7/14
		-2-06	Hull Joint Details		2/10/14
		-2-07	Girder Details		2/10/14
		-3-01	Console		2/7/14
		-3-02	Push Knees		2/7/14
		-FR	Frame Reference		2/6/14
		-F-1	Frame 1		2/7/14
		-F-2to6	Frame 2-6, Typ.		2/7/14

***** Plazed Parts *****

Response Marine, Inc.

Boat: CPM - 24' Work Skiff

File: \Des\Sound Mar\SouthHampton26Garvey\Deriv\CPM 24

Rev. Date: 2/3/14

Print Date: 2/12/14

1/4" Parts- 5086 H116 Marine

<u>Part #</u>	<u>Pieces</u>	<u>Description</u>
ALB-P	1	Anchor Locker Bottom, Port, Bow-F1
ALB-S	1	Anchor Locker Bottom, Stbd, Bow-F1
ALB-CL	1	Anchor Locker Bottom, CL, Bow-F1
SM-AP	1	Sole Margin F1-F2, Port
SM-AS	1	Sole Margin F1-F2, Stbd
SM-BP	1	Sole Margin F2-F5, Port
SM-BS	1	Sole Margin F2-F5, Stbd
SM-CP	1	Sole Margin F5-Tran, Port
SM-CS	1	Sole Margin F5-Tran, Stbd
SB-A	1	Sole Body F1-F2, CL
SB-B	1	Sole Body F2-F5, CL
SB-C	1	Sole Body F5-Tran, CL
FD	1	Foredeck
SD-P	1	Side Deck, Port
SD-S	1	Side Deck, Stbd
SDS-AP	1	Side Deck Sheathing, F1-F6 Port
SDS-AS	1	Side Deck Sheathing, F1-F6 Stbd
SDS-BP	1	Side Deck Sheathing, F6-Tran Port
SDS-BS	1	Side Deck Sheathing, F6-Tran Stbd
SWS-P	1	Splash Well Side, Port
SWS-S	1	Splash Well Side, Stbd
TD-P	1	Transom Deck, Port
TD-S	1	Transom Deck, Stbd
TSL-A	2	Topsides Stringer, Keel-F1, Port&Stbd
TSL-B	2	Topsides Stringer, F1-Tran, Port&Stbd
TSL-C	2	Topsides Stringer, Tran OB-SWS, P&S
BOW	1	Bow
BK-P	1	Bow Knuckle, Port
BK-S	1	Bow Knuckle, Stbd
F1	1	Frame 1
F2	1	Frame 2
F2-U	2	Frame 2 Upper, Port&Stbd
F3	1	Frame 3
F3-U	2	Frame 3 Upper, Port&Stbd
F4	1	Frame 4
F4-U	2	Frame 4 Upper, Port&Stbd
F5	1	Frame 5
F5-U	2	Frame 5 Upper, Port&Stbd

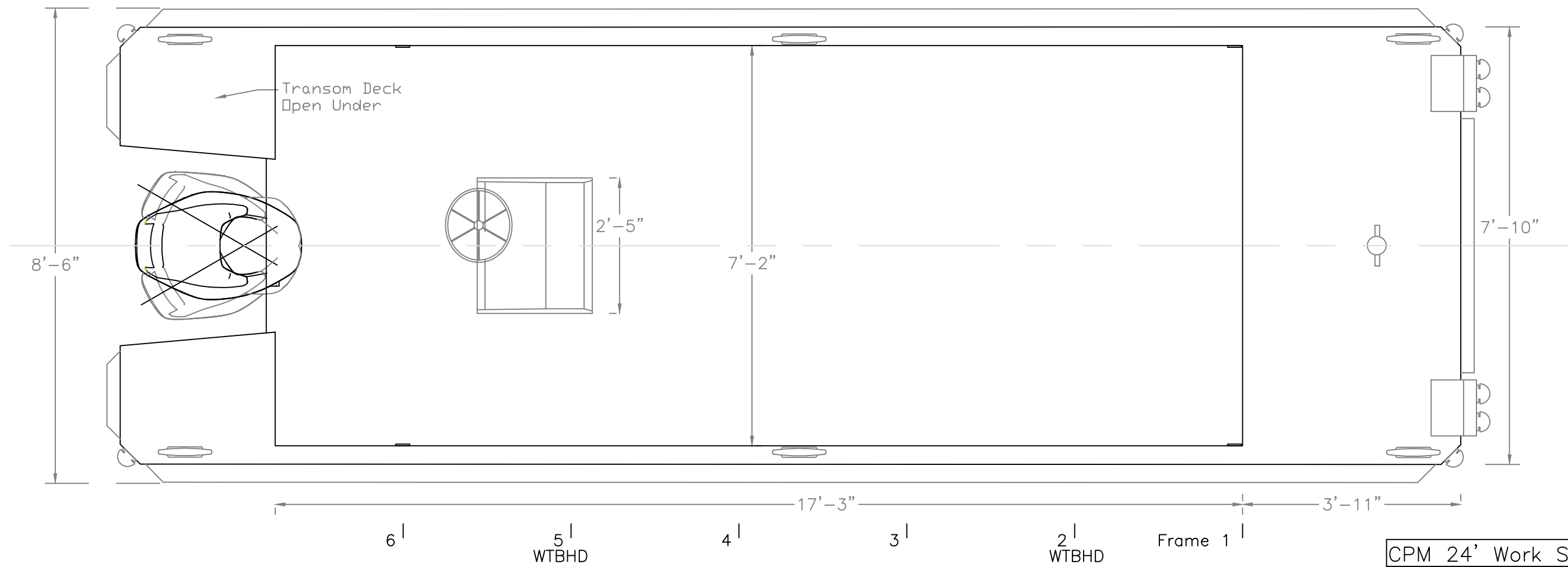
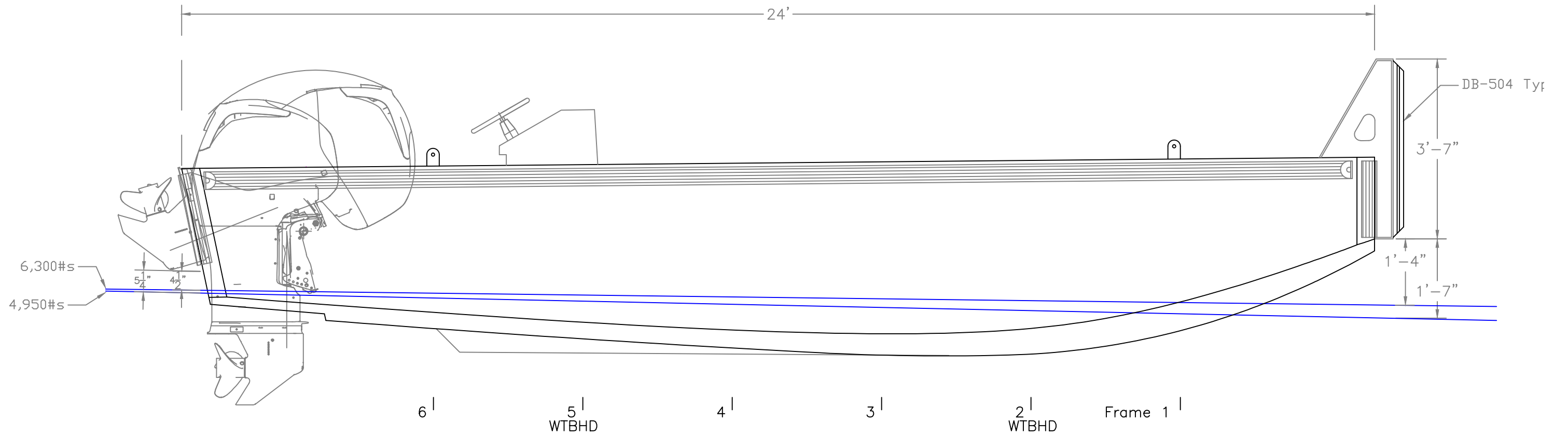
F6	1	Frame 6
F6-U	2	Frame 6 Upper, Port&Stbd
G2-A	2	Girder, Fwd Upper (Bow-F1) @ FD
G2-B	2	Girder, Fwd Lower (Bow-F2)
G2-C	2	Girder, Aft (F2-Tran)
G3-A	2	Girder, Fwd (FD/BOW), @ BS3
G3-B	2	Girder, Fwd (BOW/BOT), @ BS3
TS-AP	1	Topsides, Fwd, Port
TS-AS	1	Topsides, Fwd, Stbd
TS-BP	1	Topsides, Aft, Port
TS-BS	1	Topsides, Aft, Stbd
B-AP	1	Bottom, Fwd Port
B-AS	1	Bottom, Fwd Stbd
B-BP	1	Bottom, Aft Port
B-BS	1	Bottom, Aft Stbd
BS1-A	2	Bottom Longitudinal 1, (Bow-F5)
BS1-B	2	Bottom Longitudinal 1, (F5-Tran CL)
BS3	2	Bottom Longitudinal 3, (F1-Tran OB)
TR-P	1	Transom, Port
TR-S	1	Transom, Stbd
TR-CL	1	Transom, CL
TK-P	1	Transom Knuckle, Port
TK-S	1	Transom Knuckle, Stbd
TDC-AP	1	Transom Deck Coaming, Port, Upper
TDC-AS	1	Transom Deck Coaming, Stbd, Upper
TDC-BP	1	Transom Deck Coaming, Port, Lower
TDC-BS	1	Transom Deck Coaming, Stbd, Lower
DP-6C	10	Deck Plate Cap, 6"
DP-6R	10	Deck Plate Ring, 6"
CF-1	1	Console Face (FWD)
CF-2	1	Console Face (Sequential)
CF-3	1	Console Face (Sequential)
CF-4	1	Console Face (Sequential)
CF-5	1	Console Face (Sequential)
CF-6	1	Console Face (AFT)
CS-P	1	Console Side, Port
CS-S	1	Console Side, Stbd
PK-41	2	Push Knee FD Doubler
PK-42	4	Push Knee Sides
PK-43	2	Push Knee Cap, Aft
PK-44	2	Push Knee Cap, Top
PK-45	2	Push Knee Cap, Bottom

121 Sub Total 1/4" 5086 Parts

3/8" Parts 5086 H116 Marine

<u>Part #</u>	<u>Pieces</u>	<u>Description</u>
KA	1	Keel, Fwd (Top @ FD)
KB	1	Keel, Fwd

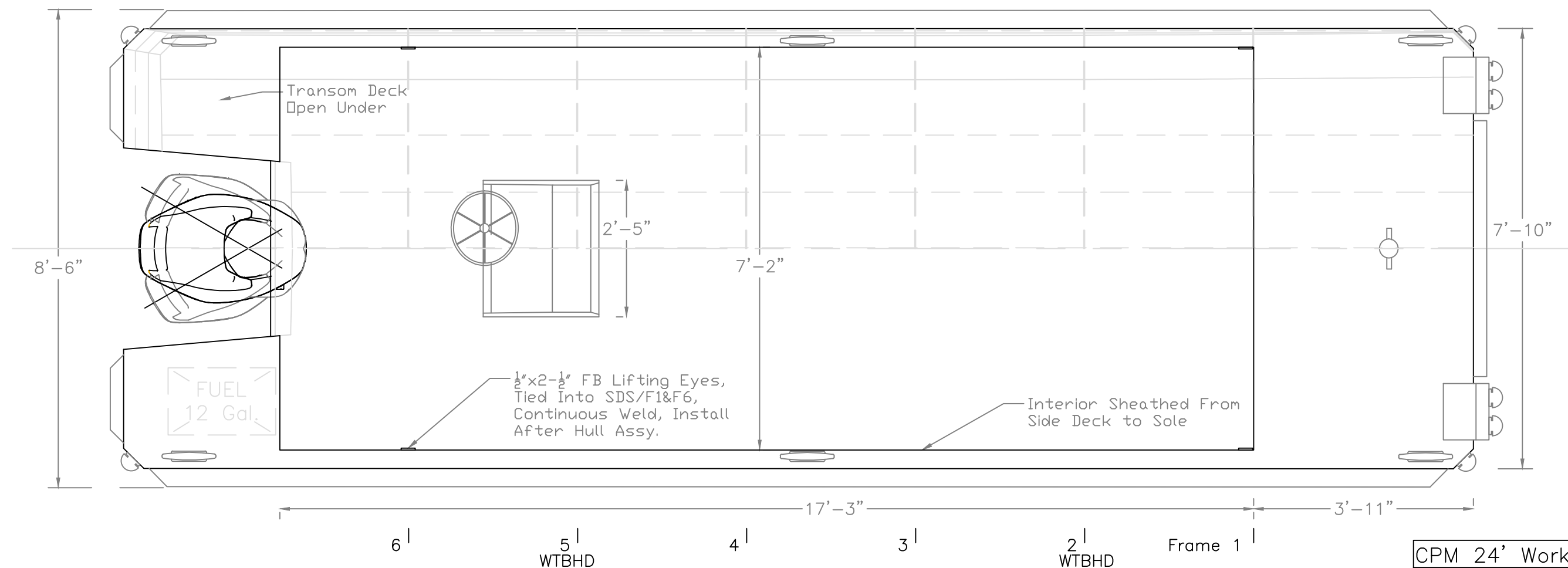
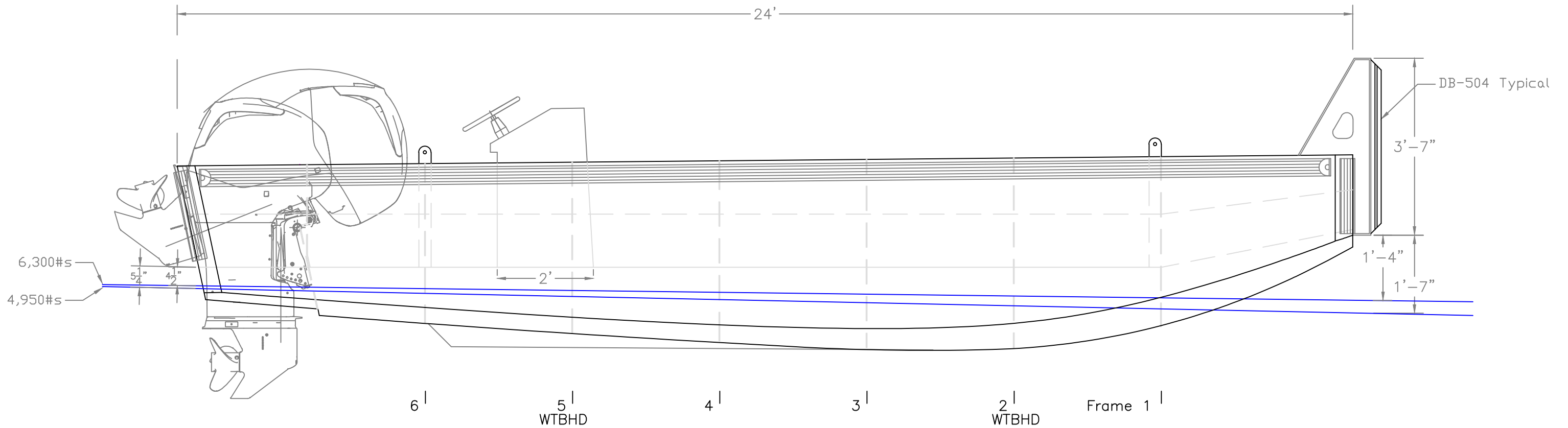
KC	1	Keel, Mid
KD	1	Keel, Aft
PK-61	2	Push Knee Face, Fwd
TL	1	Transom Lip
	7	Sub Total 3/8" 5086 Parts
128		Total Parts (1/4" & 3/8")



This drawing represents significant intellectual property of Response Marine, Inc. Reproduction of this drawing in any form, in whole or in part, including transmissions of any type, to third parties is forbidden without the prior written consent of Response Marine, Inc.

REV.	DESCRIPTION

CPM 24' Work Skiff		
OUTBOARD VIEWS		
SCALE	DES/DWN	DATE
1/2"=1'	WAL/JCC	2/6/14
For: CPM Const.		REV
Response Marine, Inc.		DWG NO.
Newburyport, MA, www.responsemarine.com		467-01

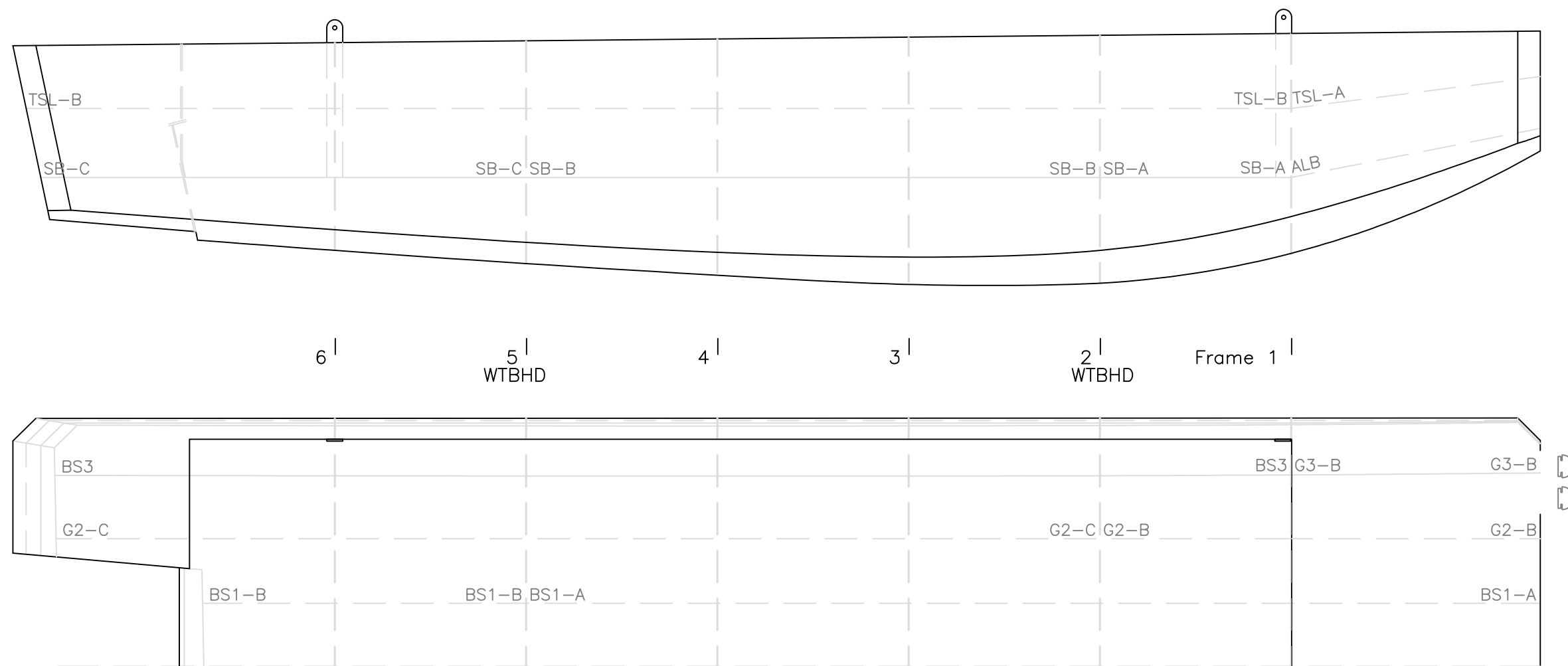


This drawing represents significant intellectual property of Response Marine, Inc. Reproduction of this drawing in any form, in whole or in part, including transmissions of any type, to third parties is forbidden without the prior written consent of Response Marine, Inc.

REV.	DESCRIPTION

CPM 24' Work Skiff		
INBOARD VIEWS		
SCALE	DES/DWN	DATE
1/2"=1'	WAL/JCC	2/12/14
Response Marine, Inc.		REV
Newburyport, MA, www.responsemarine.com		DWG NO.
		467-02

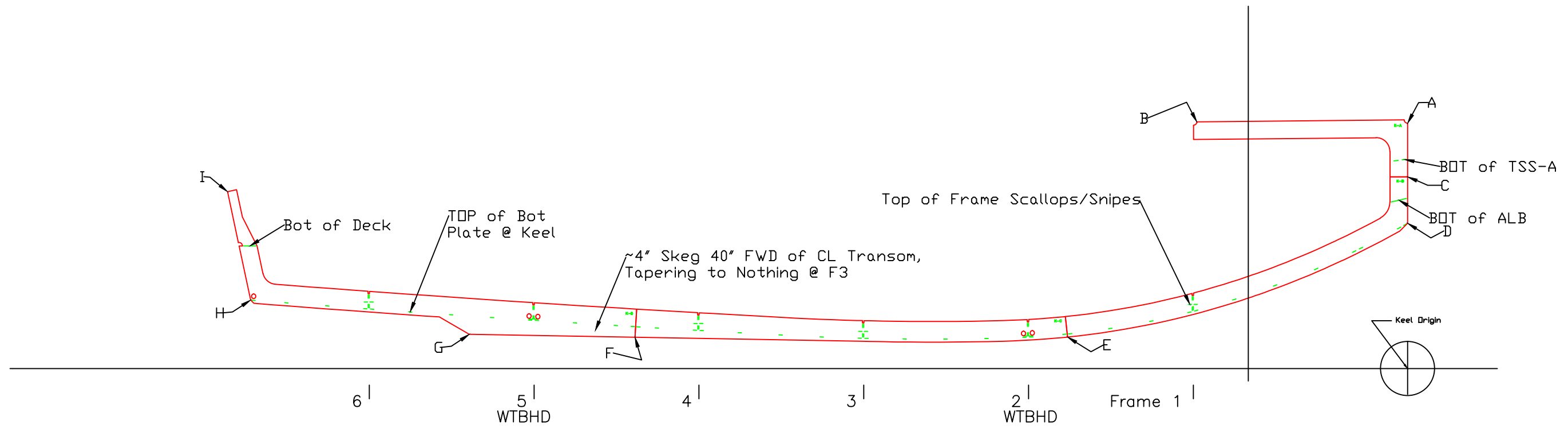
For: CPM Const.



This drawing represents significant intellectual property of Response Marine, Inc. Reproduction of this drawing in any form, in whole or in part, including transmissions of any type, to third parties is forbidden without the prior written consent of Response Marine, Inc.

REV.	DESCRIPTION

CPM 24' Work SKiff		
Skins Structure		For: CPM Const.
SCALE 1/2"=1'	DES/DWN WAL/JCC	DATE 2/10/14
Response Marine, Inc.		REV
Newburyport, MA, www.responsemarine.com		DWG NO. 467-03



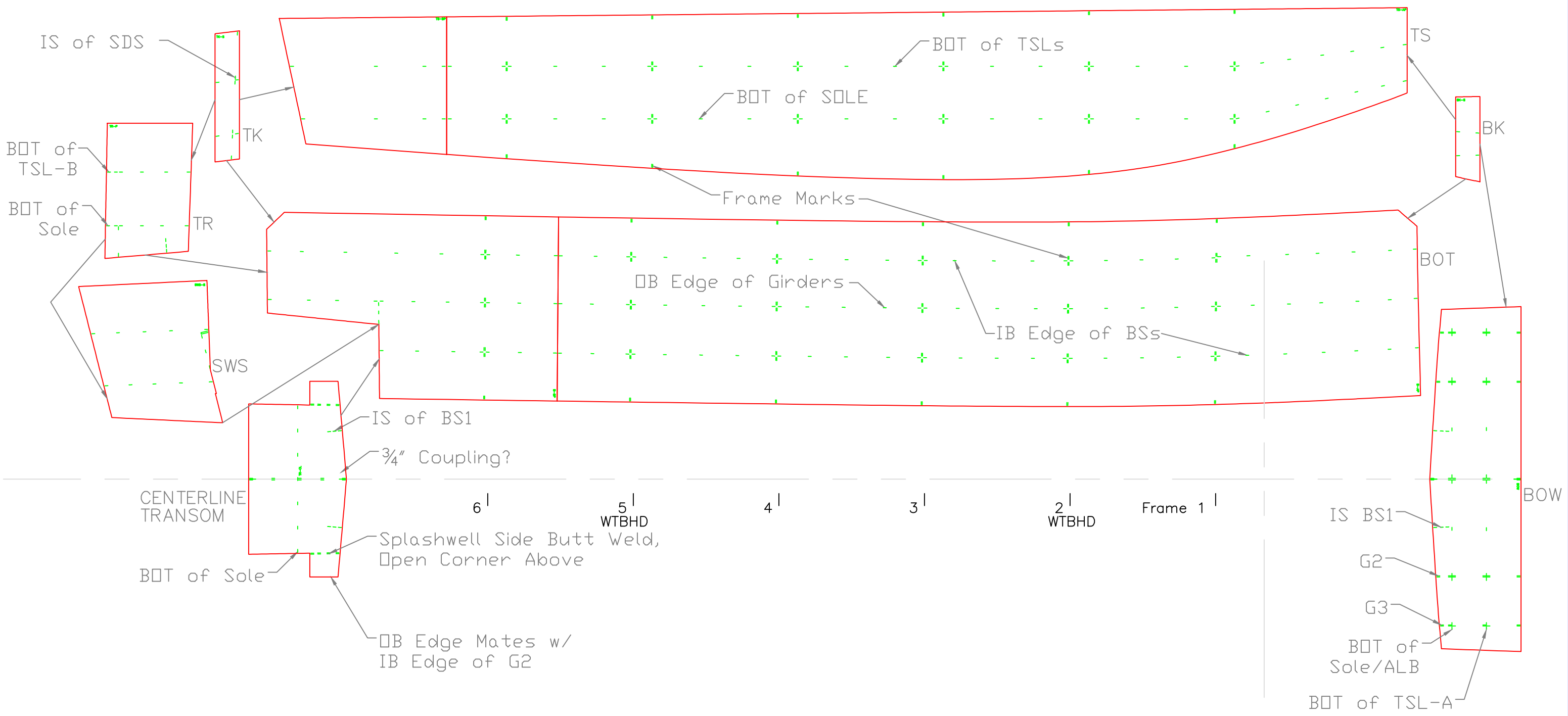
Response Marine, Inc.				
CPM24	2/6/14			
Keel Points				
	Inches- sixteenths		Feet	
	Horizontal	Vertical	Horizontal	Vertical

A to Origin				
B to Origin				
C to Origin				
D to Origin				
E to Origin				
F to Origin				
G to Origin				
H to Origin				
I to Origin				
A				
A to				
B to				
C to				
D to				
E to				
F to				
G to				
H to				
I to				
A				
A to				
B to				
C to				
D to				
E to				
F to				
G to				
H to				
I to				

This drawing represents significant intellectual property of Response Marine, Inc. Reproduction of this drawing in any form, in whole or in part, including transmissions of any type, to third parties is forbidden without the prior written consent of Response Marine, Inc.

REV.	DESCRIPTION

CPM 24' Work Skiff		
KEEL DRAWING		
For: CPM Const.		DATE
SCALE	DES/DWN	DATE
1/2"=1'	WAL/JCC	2/7/14
Response Marine, Inc.		REV
Newburyport, MA, www.responsemarine.com		DWG NO.
		467-2-01

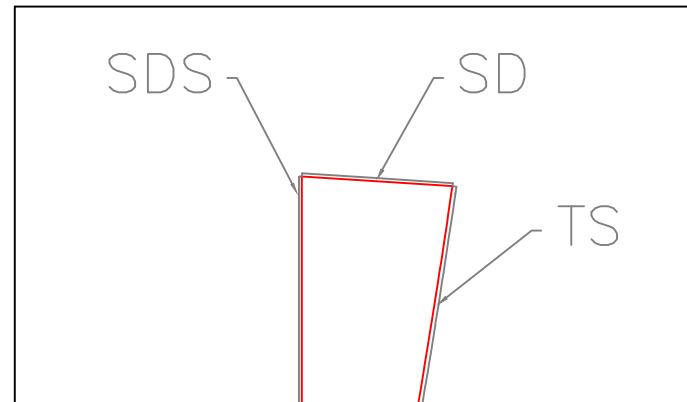


This drawing represents significant intellectual property of Response Marine, Inc. Reproduction of this drawing in any form, in whole or in part, including transmissions of any type, to third parties is forbidden without the prior written consent of Response Marine, Inc.

CPM 24' Work Skiff		
SKIN LAYOUT		
SCALE	DES/DWN	DATE
1/2"=1'	WAL/JCC	2/7/14
REV		DWG NO.
		467-2-02

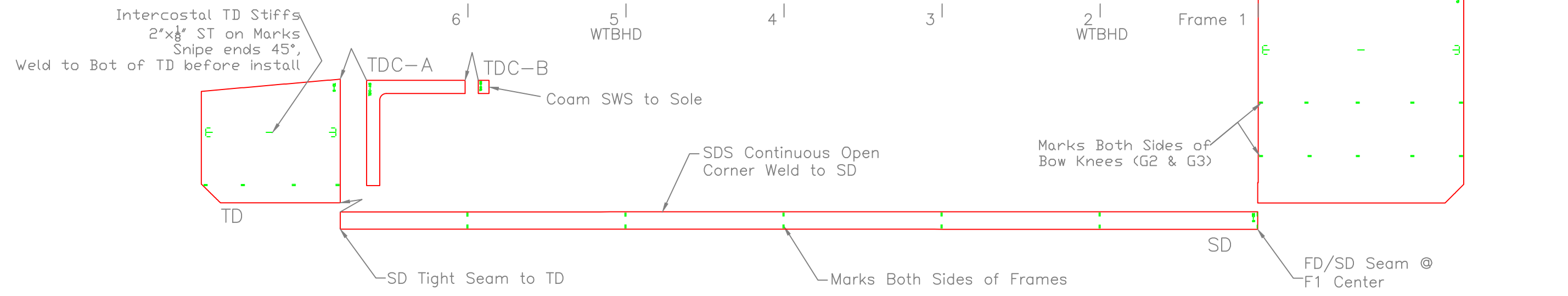
REV.	DESCRIPTION

For: CPM Const.



Intercostal FD Stiffs
 2"x $\frac{1}{8}$ " ST on Marks
 Snipe ends 45°,
 Weld to Bot of FD before install

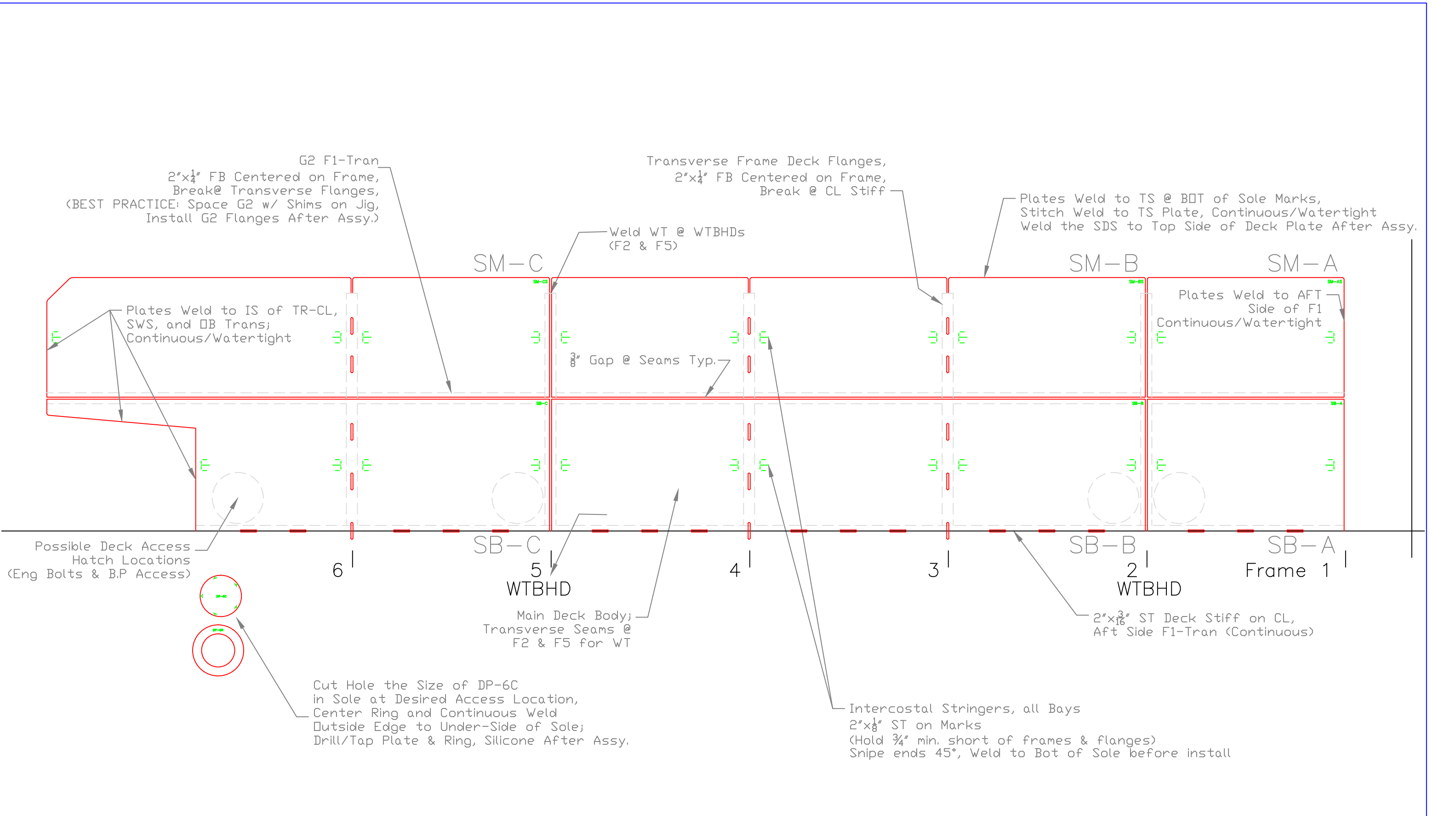
Marks Are On UNDERSIDE / OUTBOARD SIDE of Parts



This drawing represents significant intellectual property of Response Marine, Inc. Reproduction of this drawing in any form, in whole or in part, including transmissions of any type, to third parties is forbidden without the prior written consent of Response Marine, Inc.

CPM 24' Work Skiff		
SIDE DECK LAYOUT For: CPM Const.		
SCALE 1/2"=1'	DES/DWN WAL/JCC	DATE 2/7/14
Response Marine, Inc. Newburyport, MA, www.responsemarine.com		REV DWG NO. 467-2-03

REV.	DESCRIPTION



G2 F1-Tran
 2"x1/4" FB Centered on Frame,
 Break@ Transverse Flanges,
 (BEST PRACTICE: Space G2 w/ Shims on Jig,
 Install G2 Flanges After Assy.)

Transverse Frame Deck Flanges,
 2"x1/4" FB Centered on Frame,
 Break @ CL Stiff

Plates Weld to TS @ BOT of Sole Marks,
 Stitch Weld to TS Plate, Continuous/Watertight
 Weld the SDS to Top Side of Deck Plate After Assy.

Weld WT @ WTBHDs
 (F2 & F5)

Plates Weld to IS of TR-CL,
 SWS, and DB Trans;
 Continuous/Watertight

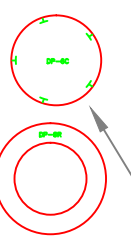
Plates Weld to AFT
 Side of F1
 Continuous/Watertight

3/8" Gap @ Seams Typ.

Possible Deck Access
 Hatch Locations
 (Eng Bolts & B.P Access)

Cut Hole the Size of DP-6C
 in Sole at Desired Access Location,
 Center Ring and Continuous Weld
 Outside Edge to Under-Side of Sole;
 Drill/Tap Plate & Ring, Silicone After Assy.

Intercostal Stringers, all Bays
 2"x1/8" ST on Marks
 (Hold 3/4" min. short of frames & flanges)
 Snipe ends 45°, Weld to Bot of Sole before install



CPM 24' Work Skiff		
COCKPIT SOLE LAYOUT		For: CPM Const.
SCALE 3/4"=1'	DES/DWN WAL/JCC	DATE 2/7/14
Response Marine, Inc. Newburyport, MA, www.responsemarine.com		REV DWG NO. 467-2-04

This drawing represents significant intellectual property of Response Marine, Inc. Reproduction of this drawing in any form, in whole or in part, including transmissions of any type, to third parties is forbidden without the prior written consent of Response Marine, Inc.

REV.	DESCRIPTION

2-1/2"x1/2" FB Lifting Eyes;
Cut to Length, Round & Drill Top Eye,
Weld to SDS/Sole After Hull Assy.
@ Backside F1 & CL F6

Possible SDS Access Hatch
Locations (B.P. Overboard
Discharge Access, etc.)

Open Corner Weld SDS to SD

SDS-B

SDS-A

Full Depth Notch
for TSL-B

Continuous/WT Butt
Weld SDS to Tran-Knuck

SDS Seam @ F6 CL
for Ease of Install;
SDS-B Installs First

Continuous/WT Butt
Weld SDS to Sole

Plug Weld SDS to
TS Frame Flanges

Continuous/WT Butt
Weld SDS to F1

6 |

5 |
WTBHD

4 |

3 |

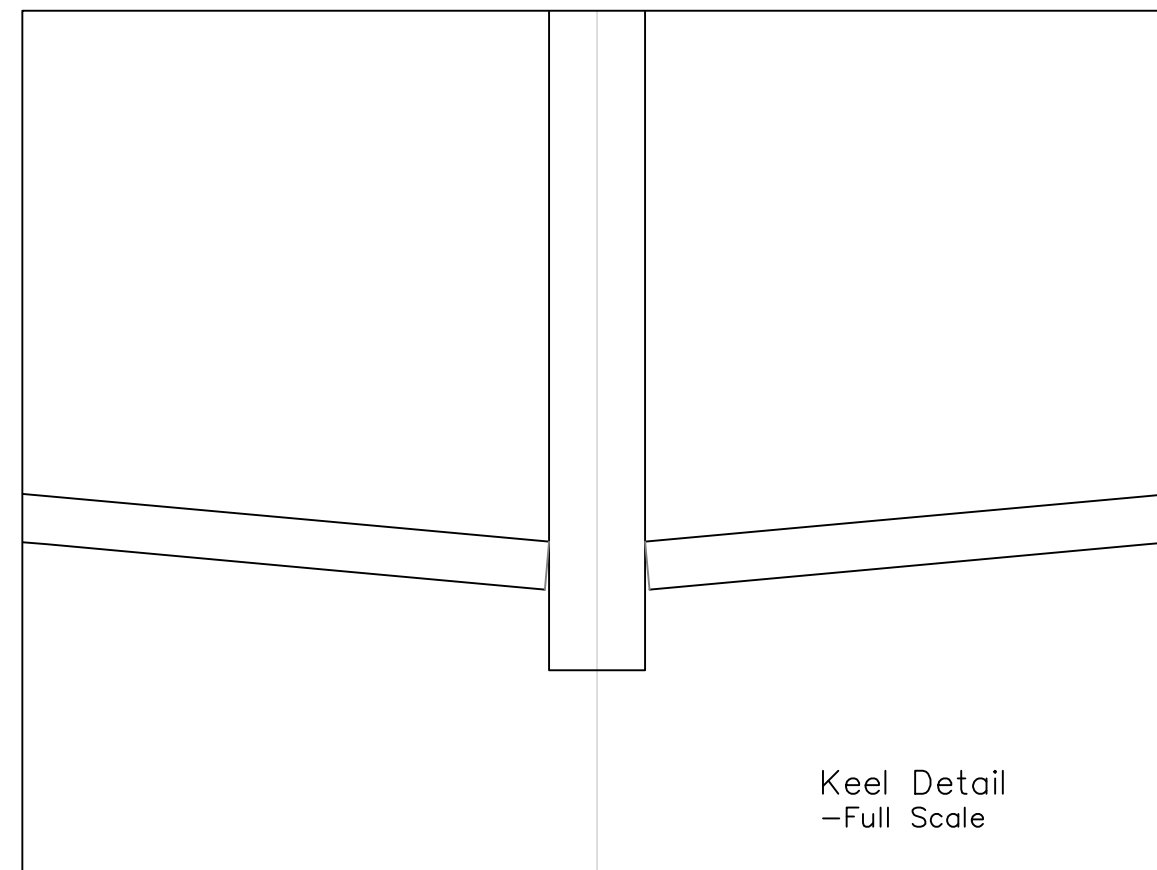
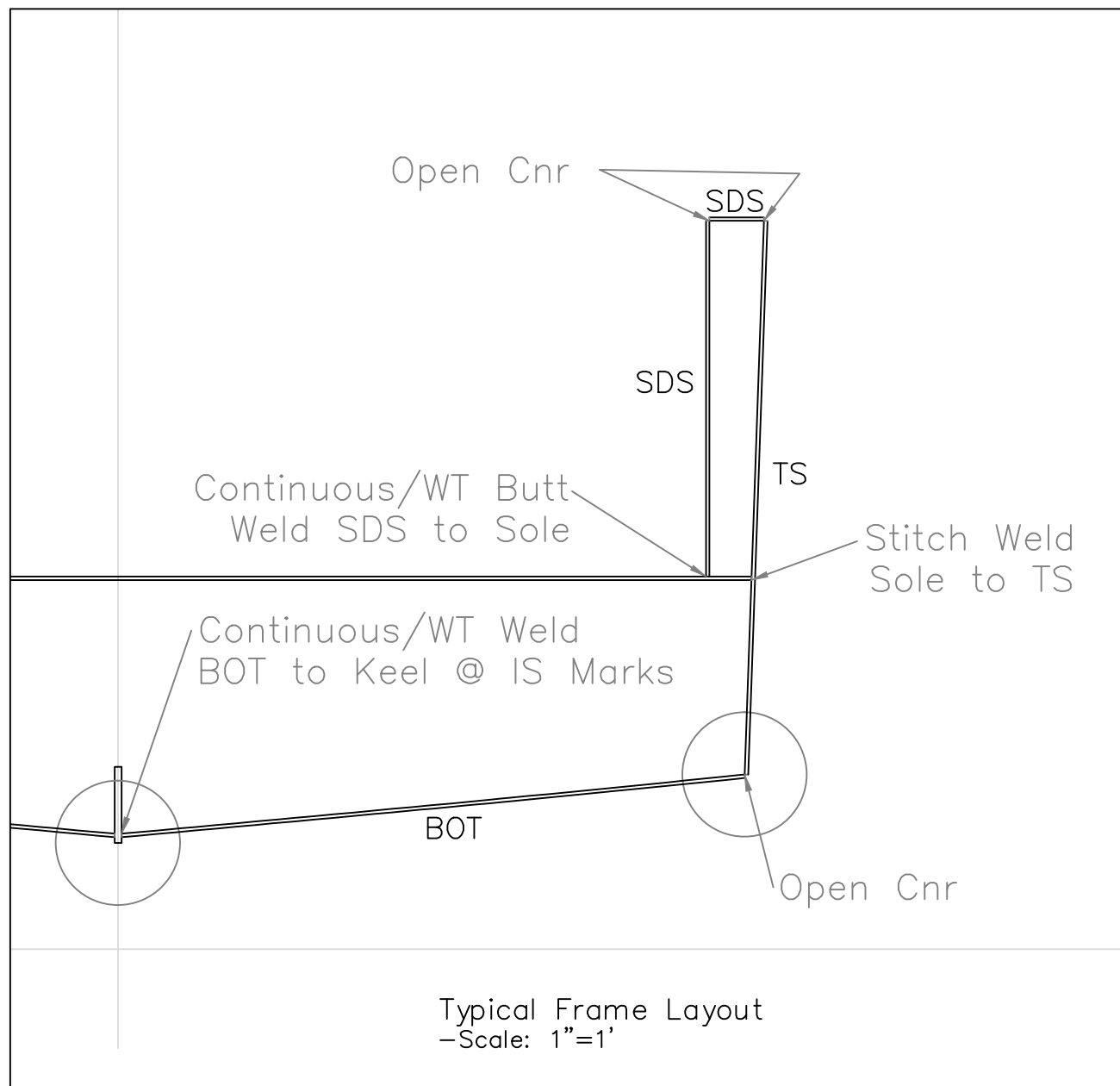
2 |
WTBHD

Frame 1 |

This drawing represents significant intellectual property of Response Marine, Inc. Reproduction of this drawing in any form, in whole or in part, including transmissions of any type, to third parties is forbidden without the prior written consent of Response Marine, Inc.

CPM 24' Work Skiff		
SD SHEATHING LAYOUT		For: CPM Const.
SCALE 3/4"=1'	DES/DWN WAL/JCC	DATE 2/7/14
Response Marine, Inc.		REV
Newburyport, MA, www.responsemarine.com		DWG NO. 467-2-05

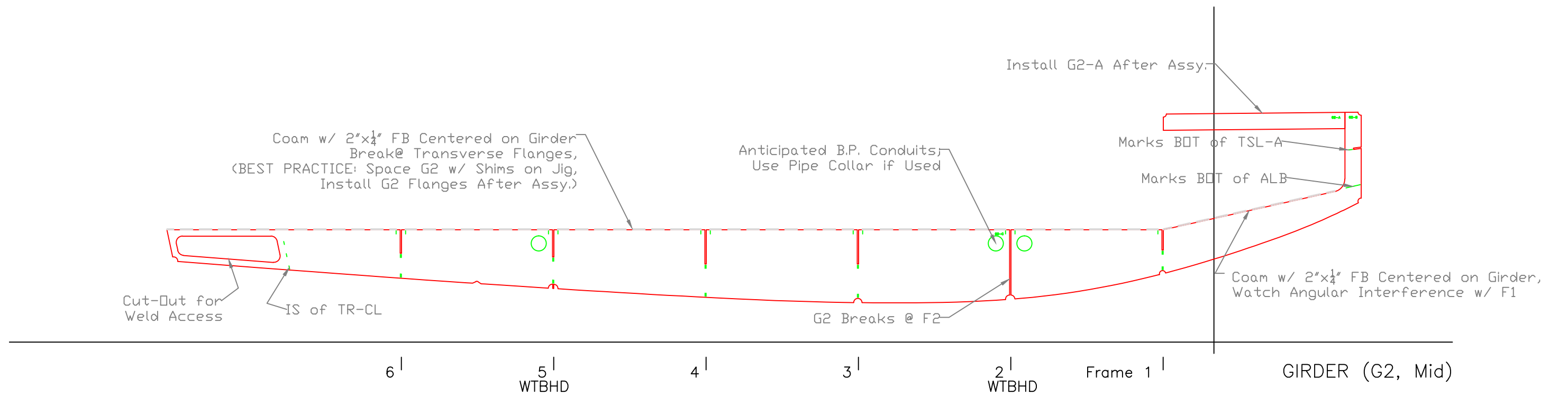
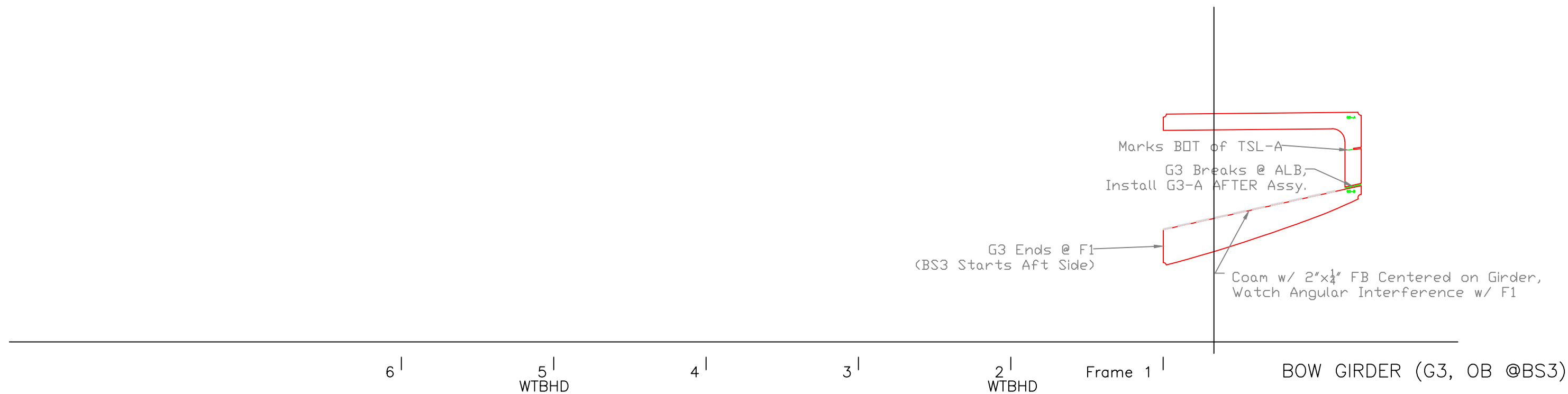
REV.	DESCRIPTION



This drawing represents significant intellectual property of Response Marine, Inc. Reproduction of this drawing in any form, in whole or in part, including transmissions of any type, to third parties is forbidden without the prior written consent of Response Marine, Inc.

CPM 24' Work Skiff		
HULL JOINT DETAILS		For: CPM Const.
SCALE	DES/DWN	DATE
NOTED	WAL/JCC	2/10/14
REV		REV
DWC NO.		467-2-06
Response Marine, Inc. Newburyport, MA, www.responsemarine.com		

REV.	DESCRIPTION

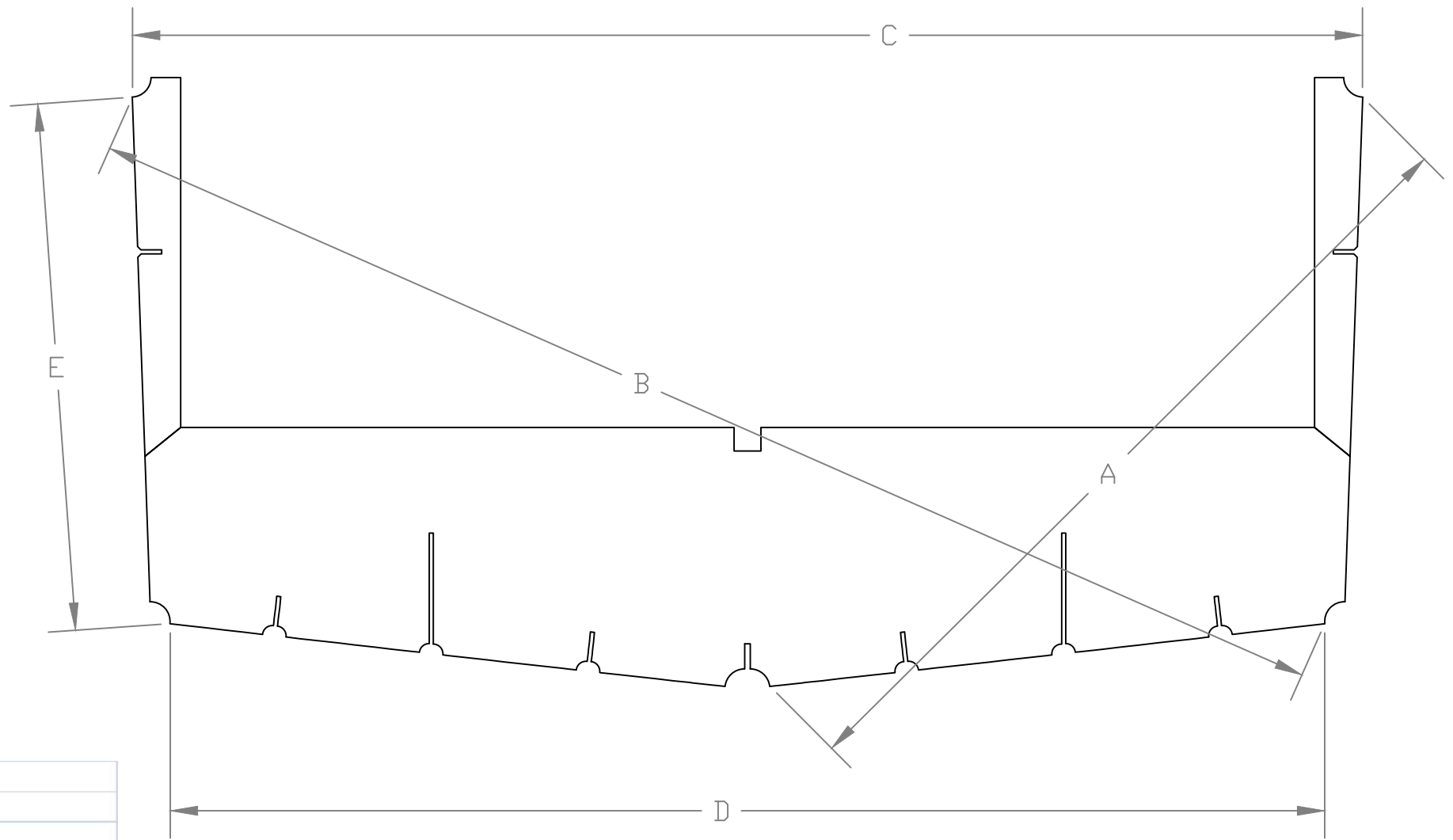


This drawing represents significant intellectual property of Response Marine, Inc. Reproduction of this drawing in any form, in whole or in part, including transmissions of any type, to third parties is forbidden without the prior written consent of Response Marine, Inc.

REV.	DESCRIPTION

CPM 24' Work Skiff		
GIRDER DETAILS		For: CPM Const.
SCALE 1/2"=1'	DES/DWN WAL/JCC	DATE 2/10/14
Response Marine, Inc.		REV
Newburyport, MA, www.responsemarine.com		DWG NO. 467-2-07

Frame & Girder Flanging:
 1.)All Frame Flanges Break @ CL 2"ST Deck Stiff
 2.)Girder Flanges Break Between All Frame Flanges
 3.)All Flanges Centered on Frames/Girders
 4.)Hold Topside Frame Flanges 1- $\frac{1}{2}$ " From Top/Bot and Center Vertically on Frame

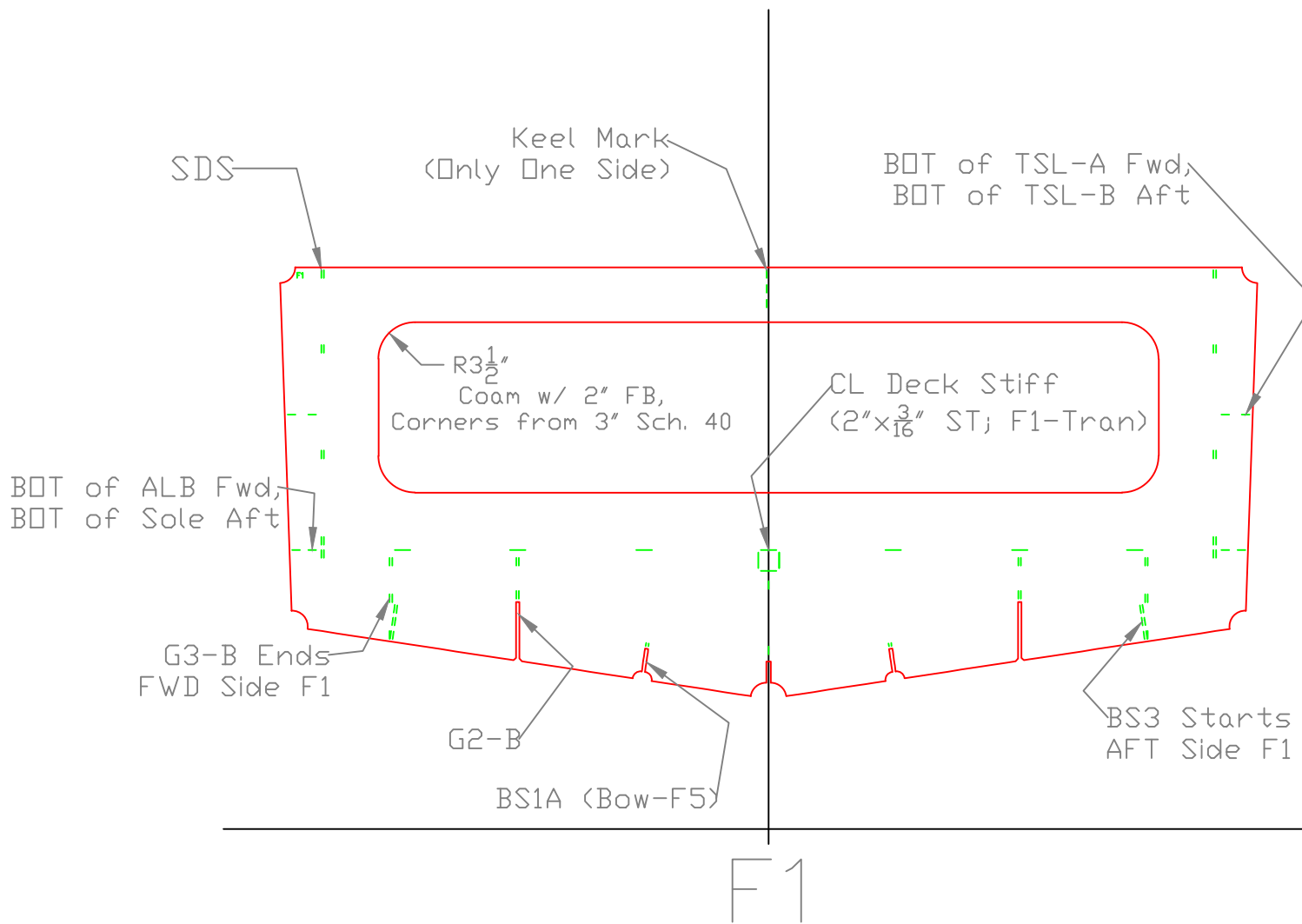


Response Marine, Inc.					
CPM24	2/6/14				
FRAME DIMENSIONS					
	Inches- sixteenths				
	A	B	C	D	E
F1					
F2					
F3					
F4					
F5					
F6					
F1					
F2					
F3					
F4					
F5					
F6					

This drawing represents significant intellectual property of Response Marine, Inc. Reproduction of this drawing in any form, in whole or in part, including transmissions of any type, to third parties is forbidden without the prior written consent of Response Marine, Inc.

REV.	DESCRIPTION

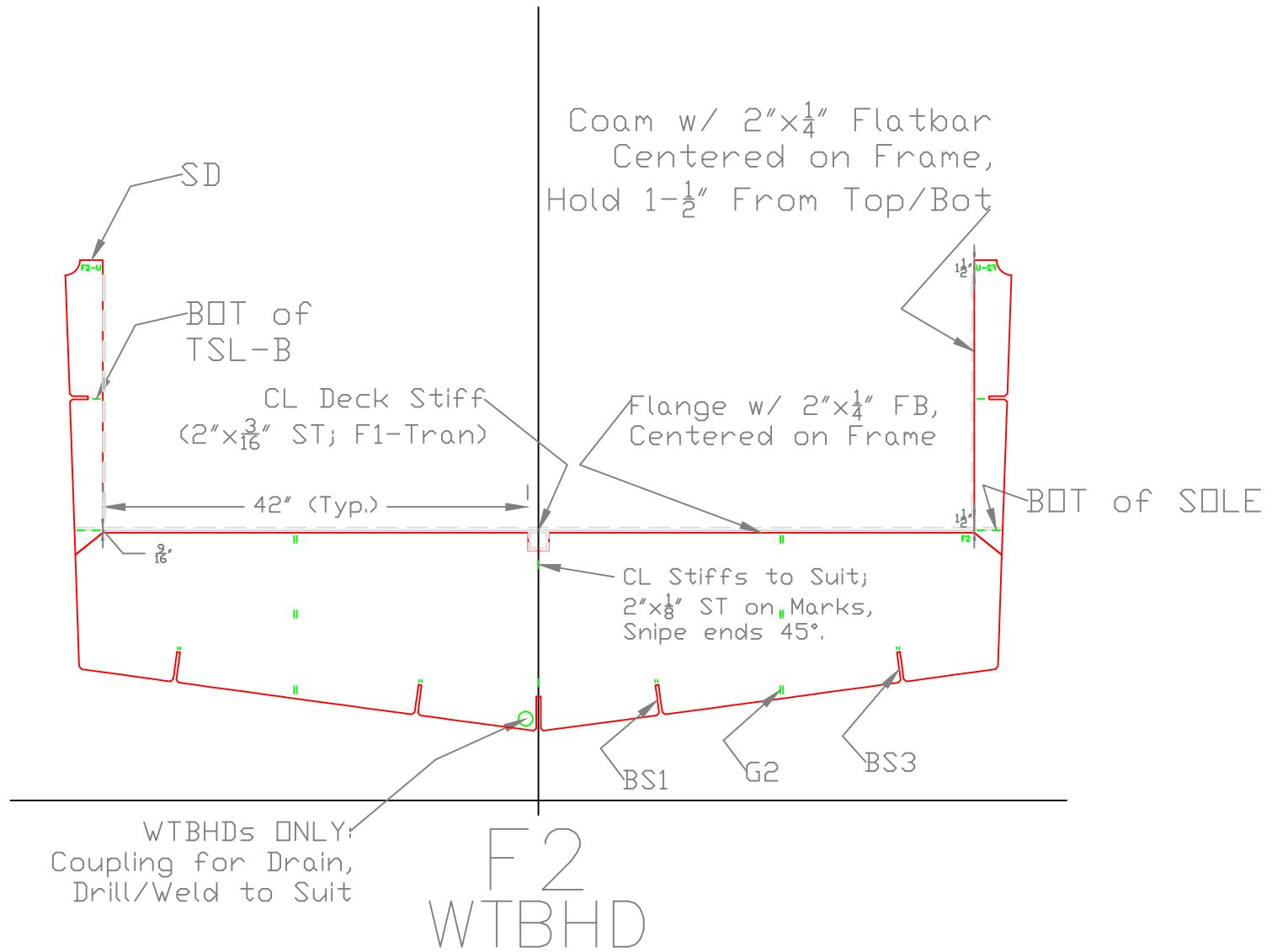
CPM 24' Work Skiff		
FRAME REFERENCE For: CPM Const.		
SCALE NONE	DES/DWN WAL/JCC	DATE 2/6/14
Response Marine, Inc.		REV
Newburyport, MA, www.responsemarine.com		DWG NO. 467-FR



This drawing represents significant intellectual property of Response Marine, Inc. Reproduction of this drawing in any form, in whole or in part, including transmissions of any type, to third parties is forbidden without the prior written consent of Response Marine, Inc.

REV.	DESCRIPTION

CPM 24' Work Skiff		
FRAME 1		For: CPM Const.
SCALE 3/4"=1'	DES/DWN WAL/JCC	DATE 2/7/14
Response Marine, Inc.		REV
Newburyport, MA, www.responsemarine.com		DWG NO. 467-F-1



This drawing represents significant intellectual property of Response Marine, Inc. Reproduction of this drawing in any form, in whole or in part, including transmissions of any type, to third parties is forbidden without the prior written consent of Response Marine, Inc.

REV. DESCRIPTION

CPM 24' Work Skiff

FRAMES 2-6, Typ. For: CPM Const.

SCALE
3/4"=1'

DES/DWN
WAL/JCC

DATE
2/7/14

Response Marine, Inc.

Newburyport, MA, www.responsemarine.com

REV

DWG NO.

467-F-2to6