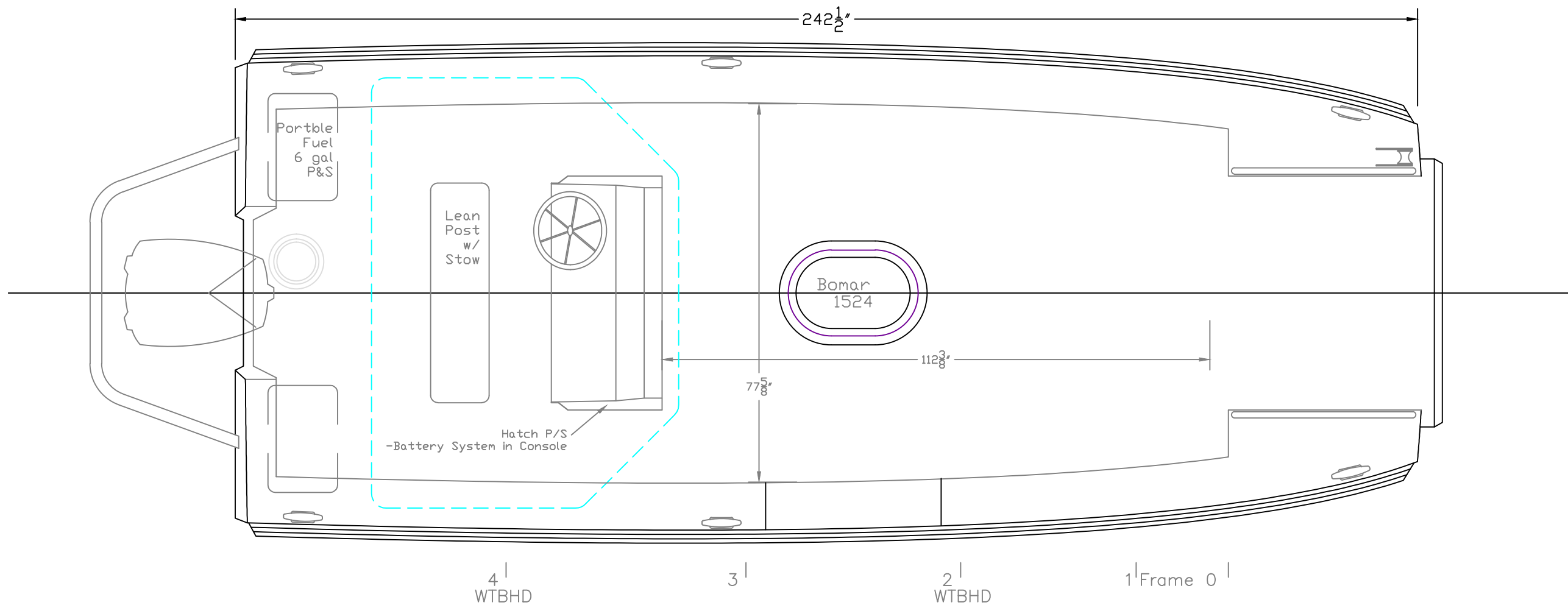


Waterlines:
 B- 3541 lbs, 370 lbs crew, 20 lbs gear
 C- 3900 lbs, 740 lbs crew (aft) , 120 lbs gear
 E- 5026 lbs, 1850 lbs crew (mid), 20 lbs gear
 F- 3916 lbs, 740 lbs crew (fwd), 20 lbs gear

NUSAR
 20' X 8' FIRE/RESCUE

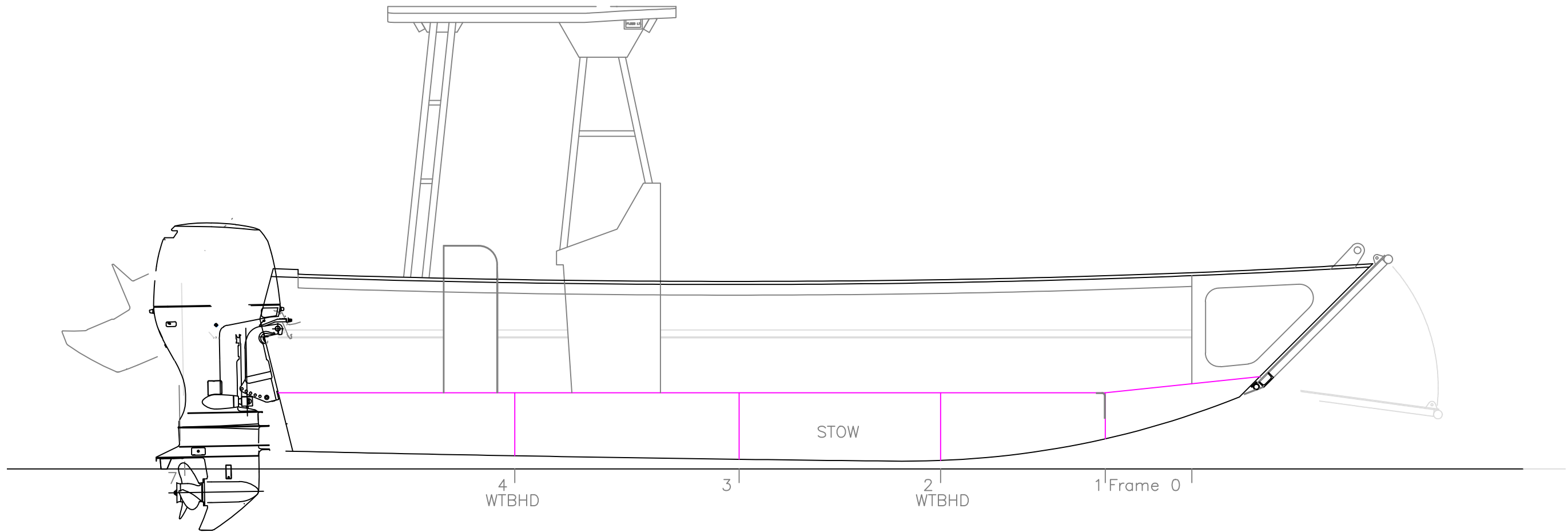
REV.	DESCRIPTION	SCALE	DES/DWN	DATE
		1/2" = 1'	WAL	10/22/12
Response Marine, Inc.				SHEET
Newburyport, MA, www.responsemarine.com				DWG NO. 436-1

OUTBOARD PROFILE
 #436- Flat Bottom



NUSAR
20' X 8' FIRE/RESCUE

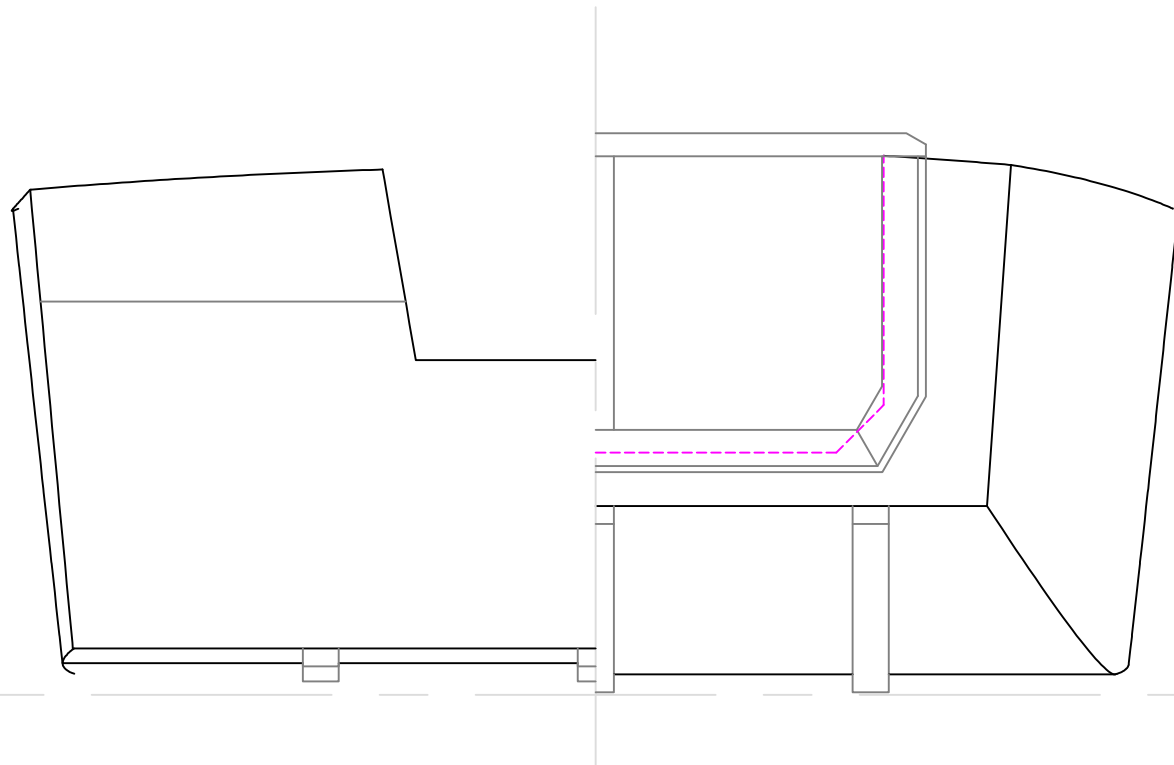
REV.	DESCRIPTION	DATE
	OUTBOARD PLAN	
	#436- Flat Bottom	
SCALE 1/2" = 1'	DES/DWN WAL	DATE 10/22/12
Response Marine, Inc. Newburyport, MA, www.responsemarine.com		SHEET DWG NO. 436-2



NUSAR
20' X 8' FIRE/RESCUE

REV.	DESCRIPTION	SCALE	DES/DWN	DATE
		1/2" = 1'	WAL	10/22/12
<p>Response Marine, Inc. Newburyport, MA, www.responsemarine.com</p>				<p>SHEET DWG NO. 436-3</p>

INBOARD PROFILE
#436- Flat Bottom



NUSAR
20' X 8' FIRE/RESCUE

END VIEWS

#436- Flat Bottom

SCALE	DES/DWN	DATE
3/4" = 1'	WAL	10/22/12

SHEET	
-------	--

Response Marine, Inc.	
DWG NO.	436-5

Newburyport, MA, www.responsemarine.com

REV.	DESCRIPTION
11/12/12,	moved outer bot channels