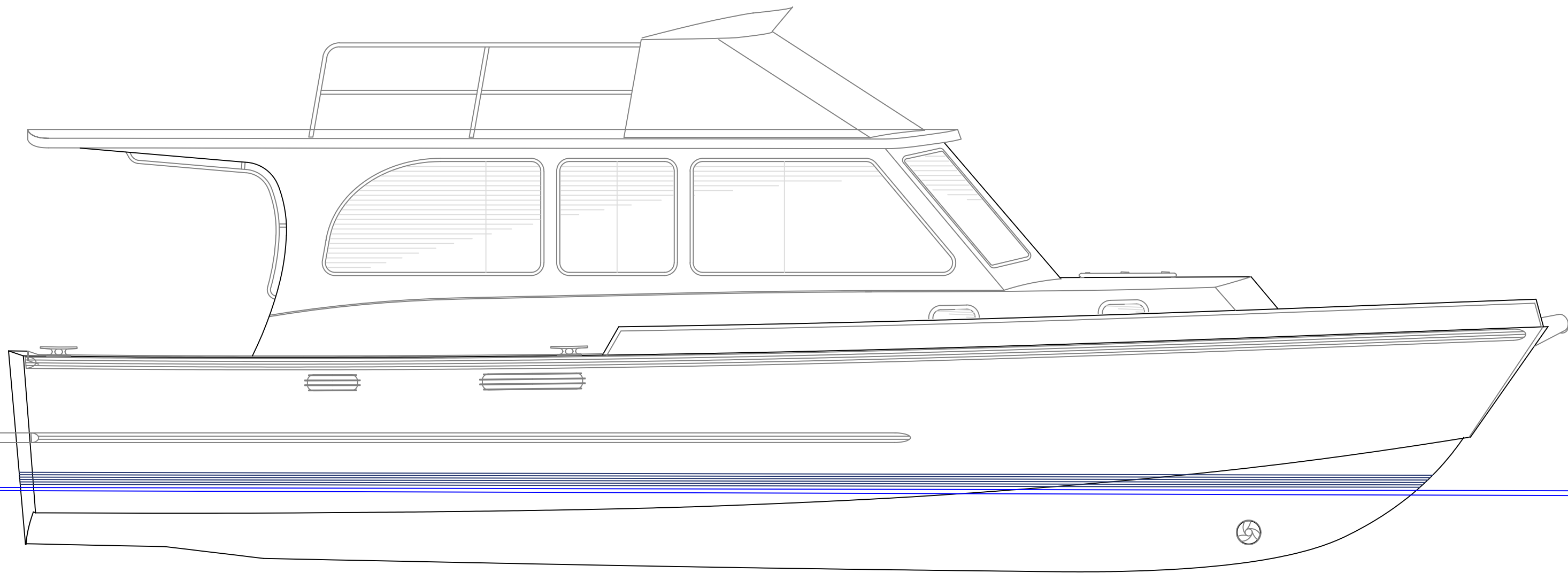


Hull Skin LOA: 40' 0" (12.19m)  
 Hull LOA w/ Platform: 42' 7" (12.98m)  
 Hull Skin Beam: 10' 2½" (3.11m)  
 Hull Beam w/ 1¾" Rub Rail: 10' 6" (3.20m)

Waterlines shown are 20,400# at .18° trim  
 & 22,200# at .12° trim

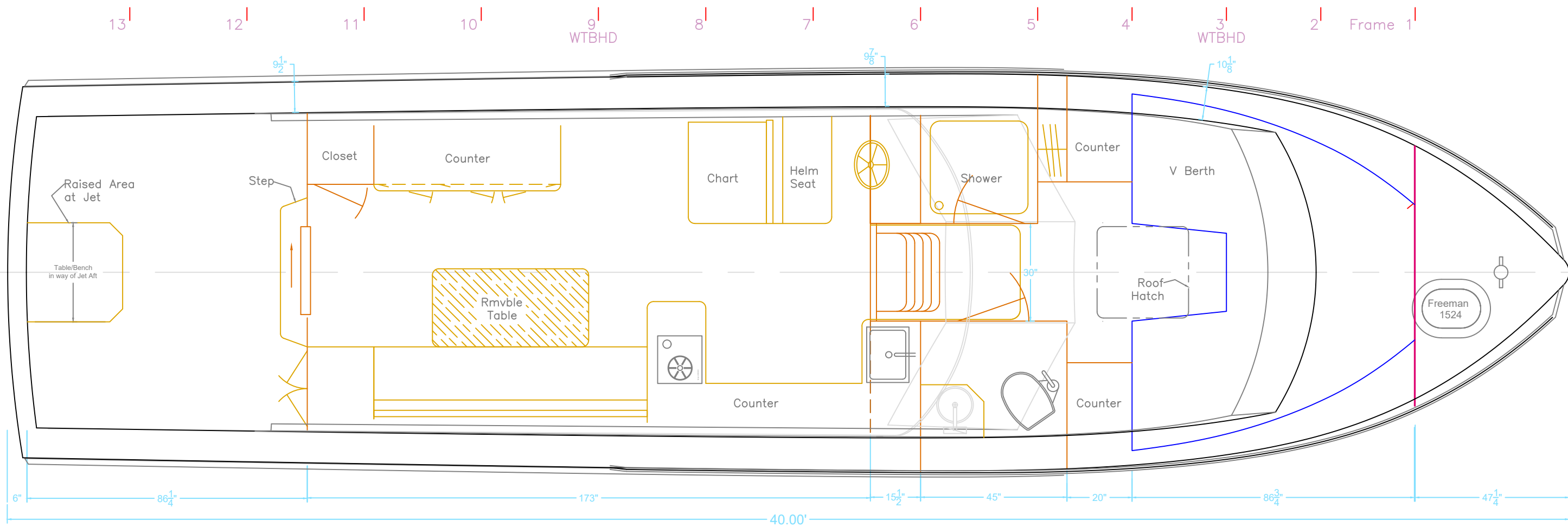


13' 12' 11' 10' 9' WTBHD 8' 7' 6' 5' 4' 3' WTBHD 2' Frame 1'

**PRELIMINARY**

| REV. | DESCRIPTION |
|------|-------------|
|      |             |

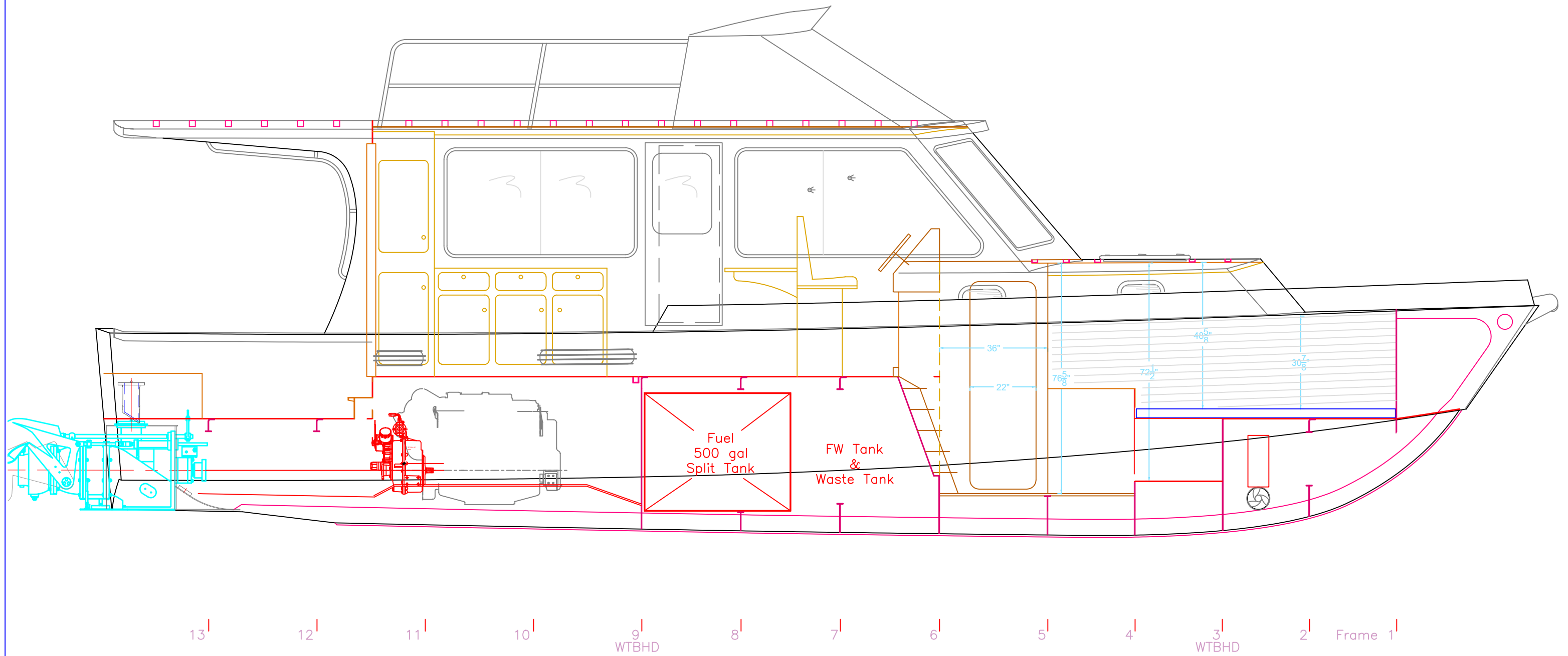
|   |                |                    |
|---|----------------|--------------------|
| OUTBOARD PROFILE                        |                |                    |
| 40' Jet Cruiser- Setz                   |                |                    |
| SCALE<br>3/8"=1'                        | DES/DWN<br>WAL | DATE<br>1/10/19    |
| Response Marine, Inc.                   |                | REV.               |
| Newburyport, MA, www.responsemarine.com |                | DWG. NO.<br>585-P1 |



**PRELIMINARY**

| REV. | DESCRIPTION |
|------|-------------|
|      |             |

|   |                |                    |
|---|----------------|--------------------|
| ARRANGEMENT PLAN                        |                |                    |
| 40' Jet Cruiser- Setz                   |                |                    |
| SCALE<br>3/8"=1'                        | DES/DWN<br>WAL | DATE<br>1/9/19     |
| <b>Response Marine, Inc.</b>            |                | REV                |
| Newburyport, MA, www.responsemarine.com |                | DWG. NO.<br>585-P2 |

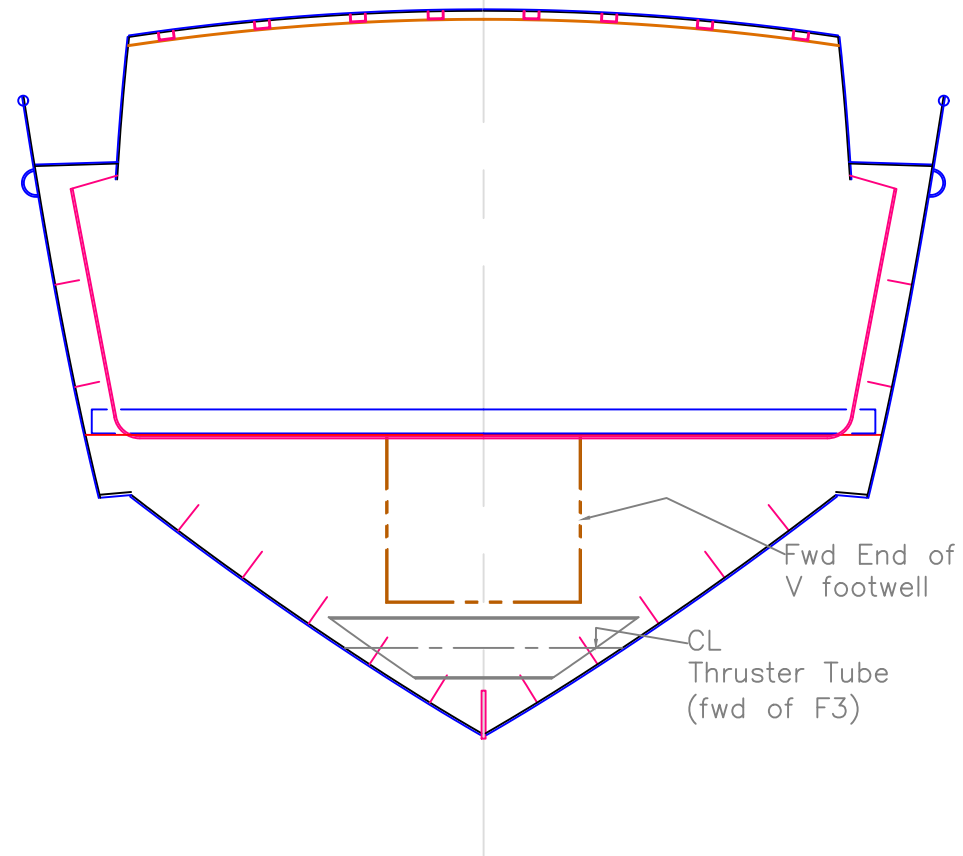


**PRELIMINARY**

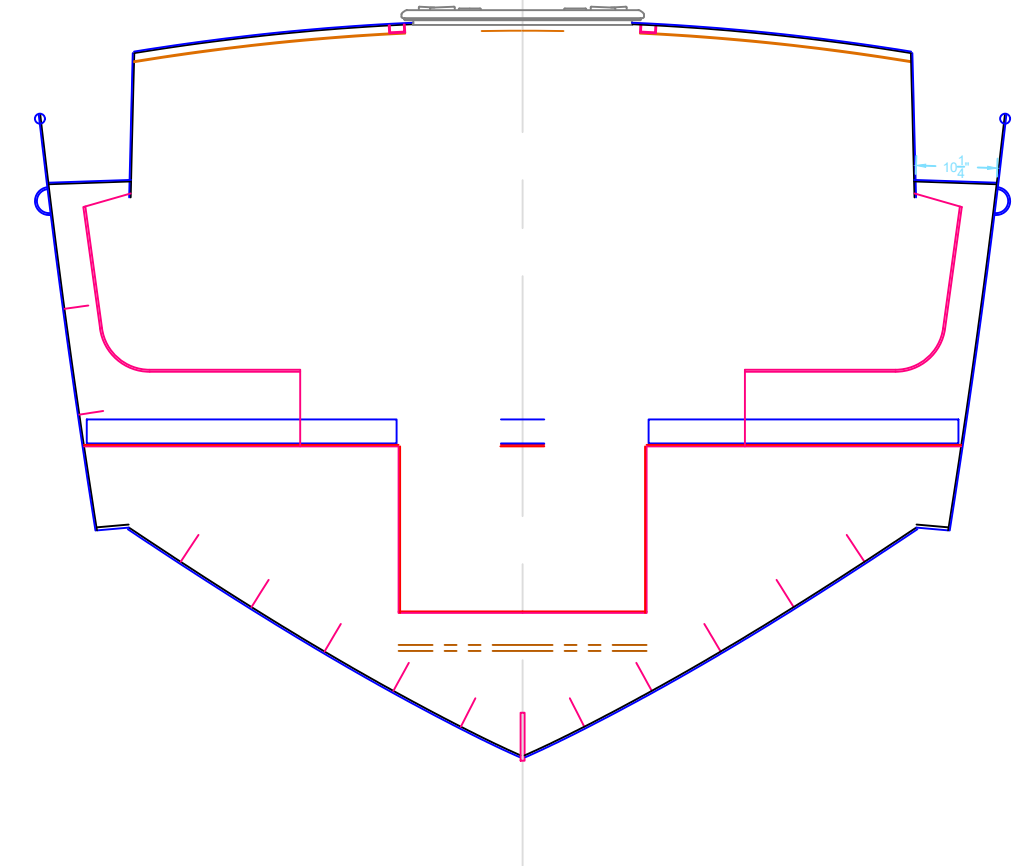
|   |                |                           |
|---|----------------|---------------------------|
| INBOARD PROFILE   |                |                           |
| 40' Jet Cruiser-Setz  |                |                           |
| SCALE<br>3/8"=1'  | DES/DWN<br>WAL | DATE<br>1/9/19            |
| <b>Response Marine, Inc.</b><br>Newburyport, MA, <a href="http://www.responsemarine.com">www.responsemarine.com</a> |                | REV<br>DWG. NO.<br>585-P3 |

| REV. | DESCRIPTION |
|------|-------------|
|      |             |

Frame 3  
at V Berth  
Looking Fwd



Frame 4  
Aft End of V Berth  
Looking Fwd

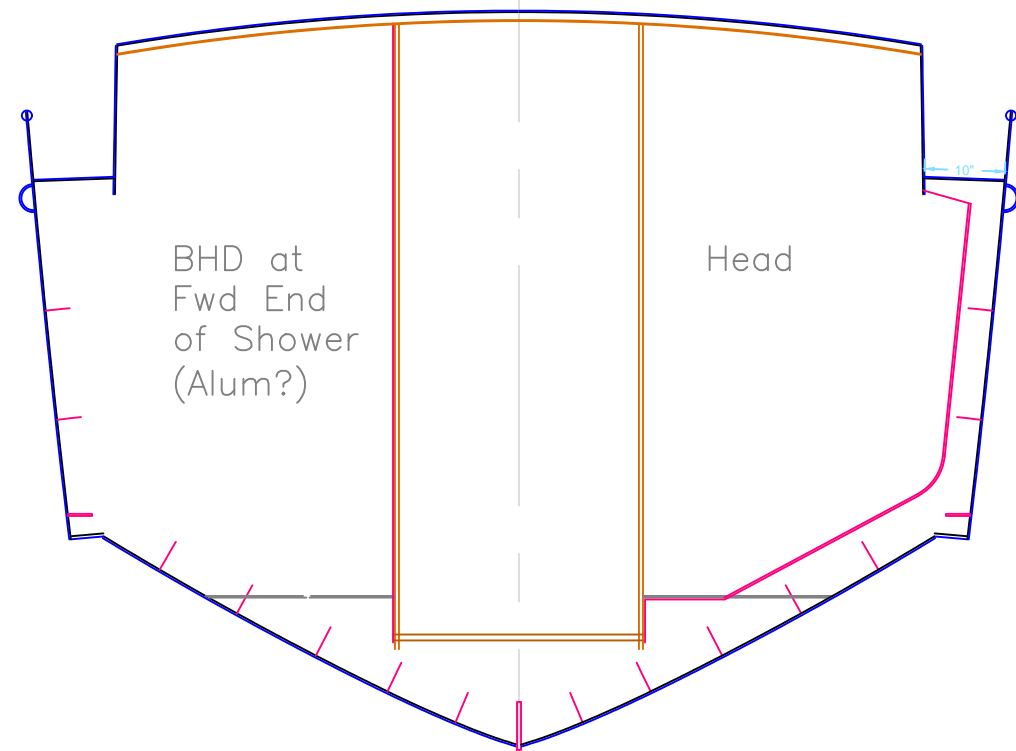


**PRELIMINARY**

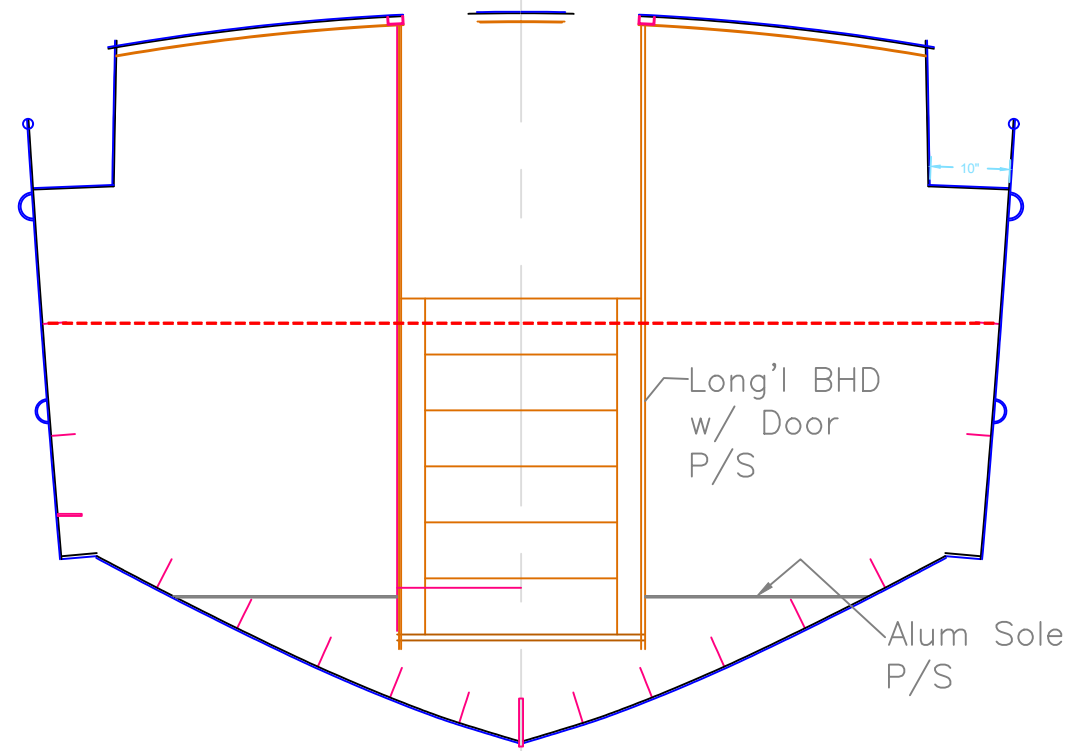
| REV. | DESCRIPTION |
|------|-------------|
|      |             |

|   |                |                    |
|---|----------------|--------------------|
| SECTIONS at F3 & F4                     |                |                    |
| 40' Jet Cruiser- Setz                   |                |                    |
| SCALE<br>1/2"=1'                        | DES/DWN<br>WAL | DATE<br>1/9/19     |
| Response Marine, Inc.                   |                | REV.               |
| Newburyport, MA, www.responsemarine.com |                | DWG. NO.<br>585-P4 |

Frame 5  
Looking Fwd



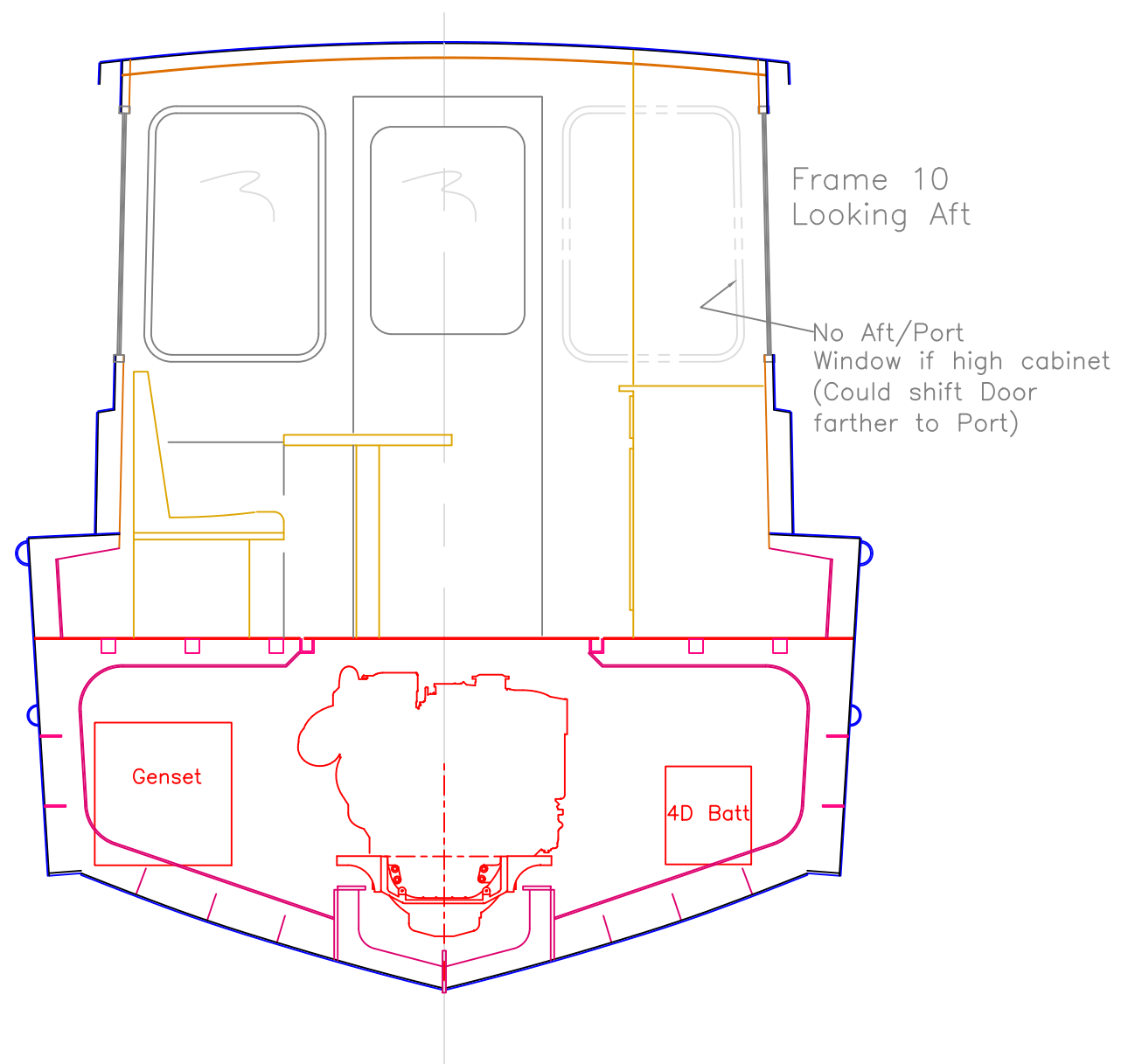
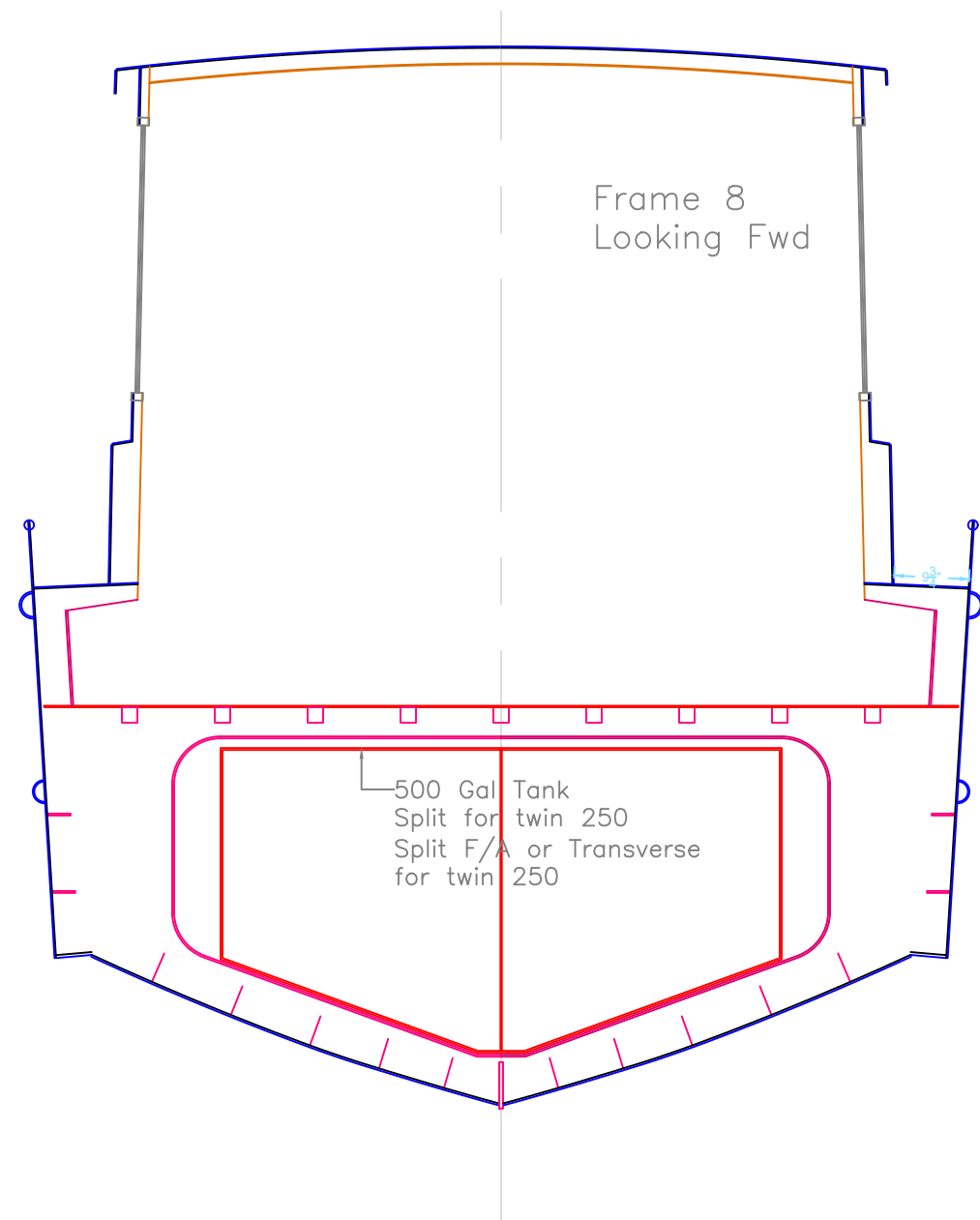
Frame 6  
BHD at Aft End of  
Head & Shower  
Looking Fwd



**PRELIMINARY**

REV. DESCRIPTION

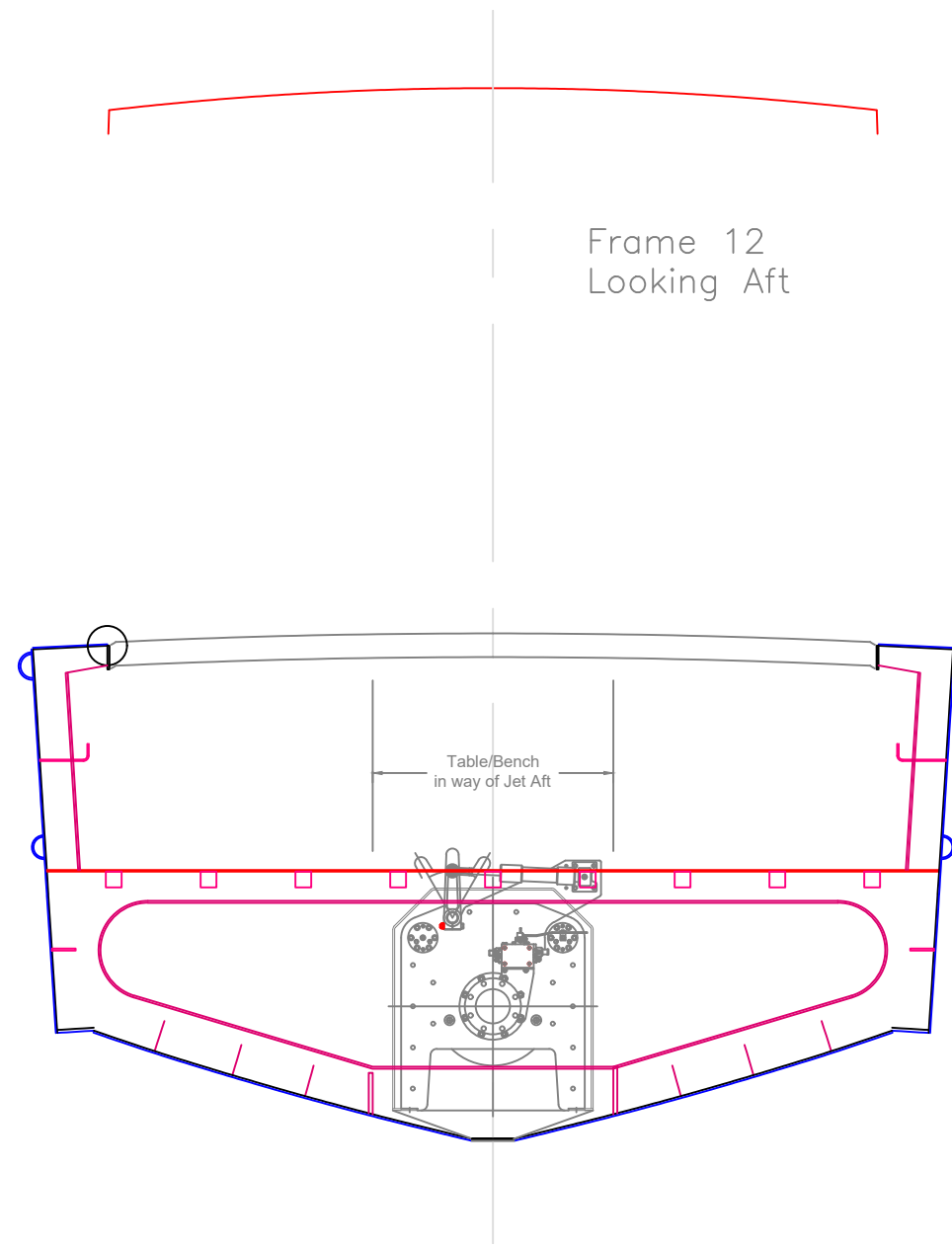
|   |                |                    |
|---|----------------|--------------------|
| SECTIONS at F5 & F6                     |                |                    |
| 40' Jet Cruiser- Setz                   |                |                    |
| SCALE<br>1/2"=1'                        | DES/DWN<br>WAL | DATE<br>1/9/19     |
| <b>Response Marine, Inc.</b>            |                | REV                |
| Newburyport, MA, www.responsemarine.com |                | DWG. NO.<br>585-P5 |



**PRELIMINARY**

REV. DESCRIPTION

|   |                |                    |
|---|----------------|--------------------|
| SECTIONS at F8 & F10                    |                |                    |
| 40' Jet Cruiser- Setz                   |                |                    |
| SCALE<br>1/2"=1'                        | DES/DWN<br>WAL | DATE<br>1/9/19     |
| Response Marine, Inc.                   |                | REV                |
| Newburyport, MA, www.responsemarine.com |                | DWG. NO.<br>585-P6 |

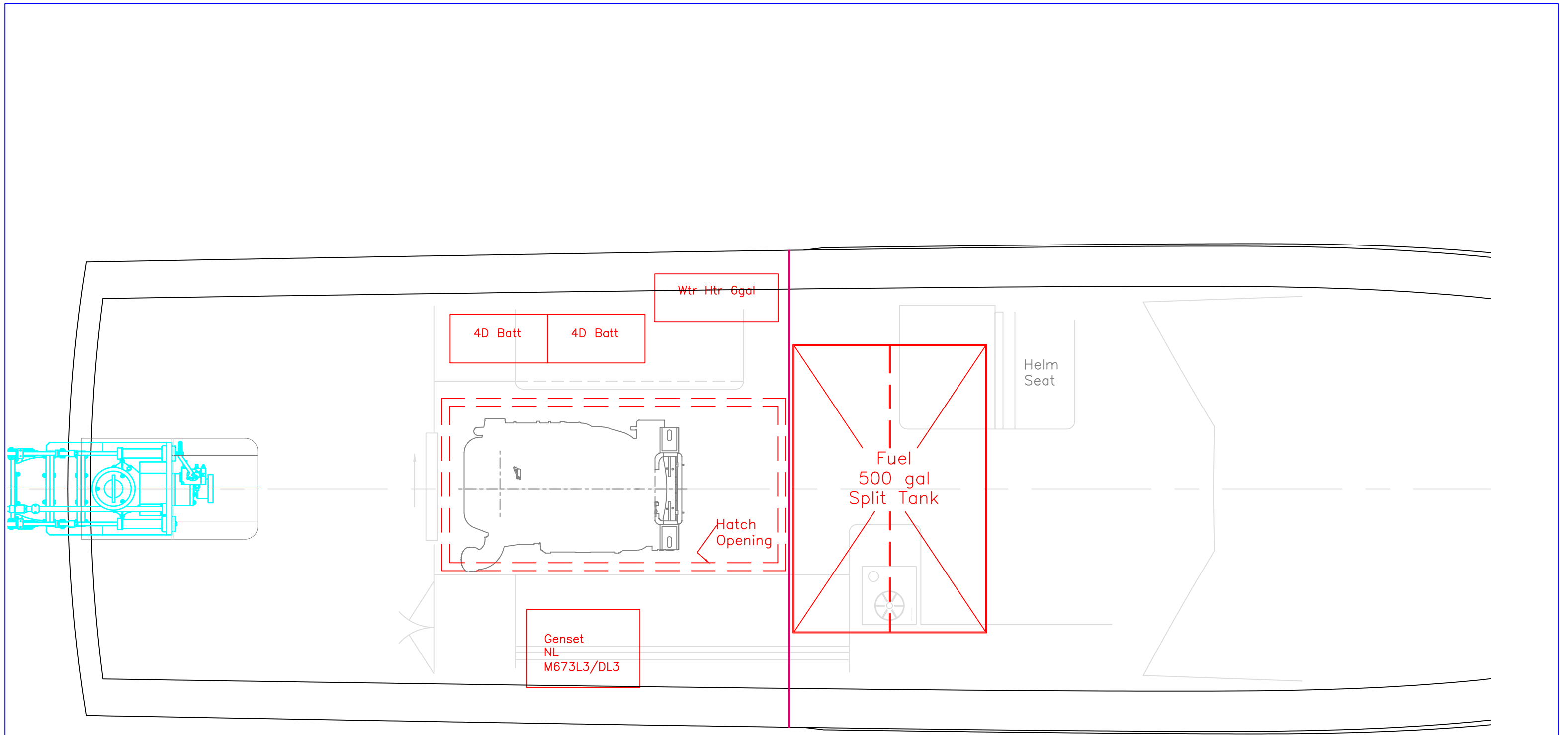


Frame 12  
Looking Aft

**PRELIMINARY**

| REV. | DESCRIPTION |
|------|-------------|
|      |             |

|   |                |                    |
|---|----------------|--------------------|
| SECTION at F12  |                |                    |
| 40' Jet Cruiser- Setz   |                |                    |
| SCALE<br>1/2"=1'  | DES/DWN<br>WAL | DATE<br>1/9/19     |
| <b>Response Marine, Inc.</b>  |                | REV                |
| Newburyport, MA, <a href="http://www.responsemarine.com">www.responsemarine.com</a> |                | DWG. NO.<br>585-P7 |



13'    12'    11'    10'    9'    8'    7'    6'    5'    4'

WTBHD

**PRELIMINARY**

| REV. | DESCRIPTION |
|------|-------------|
|      |             |

|   |                |                    |
|---|----------------|--------------------|
| ENGINE ROOM & FUEL  |                |                    |
| 40' Jet Cruiser- Setz   |                |                    |
| SCALE<br>1/2"=1'  | DES/DWN<br>WAL | DATE<br>1/9/19     |
| <b>Response Marine, Inc.</b>  |                | REV                |
| Newburyport, MA, <a href="http://www.responsemarine.com">www.responsemarine.com</a> |                | DWG. NO.<br>585-P8 |