

Response Marine, Inc. #600
Jim Evans 20' CCFish w/ Windshield/Roof

Drawing List

<u>DWG #</u>	<u>Title</u>	<u>Date</u>
600 -1	Outboard Profile & Plan	8/5/20
-2	Inboard Profile & Body Plan	8/5/20
2-1	Keel Layout	7/26/20
2-2	Girder	7/26/20
2-3	Hull Plates	7/26/20
2-3a	Topside Stringers	7/26/20
2-4	Transom	7/26/20
2-5	Cockpit Deck	7/26/20
2-5a	Anchor Locker Bottom	7/26/20
2-6	Side Decks	7/26/20
2-7	Sheer Widths	7/26/20
2-8	Step Seat at Frame 1	7/26/20
2-9	Upper Tread & Riser to Foredeck	7/26/20
2-10	Engine Bracket	8/3/20
2-11	Engine Bracket Deck	8/3/20
2-12	Kicker Engine Bracket	8/3/20
2-13	Transom Compartment	8/3/20
2-14	Fishwell Liner	8/3/20
2-15	Fishwell Gutter & Lids	8/3/20
B-1	"B-1" Flange Forming	8/3/20
C-1	Typical Skin Joints	8/3/20
F-1	Frame 1	7/28/20
F-2	Frame 2, WTBHD	7/28/20
F-3	Frame 3	7/28/20
F-3D	Frame 3, Dimensions	7/28/20
F-31	Frame 31, Lower (Typ. Intermediate Fr)	7/28/20
F-31U	Frame 31, Uppers	7/28/20
F-4	Frame 4	7/28/20
F-5	Frame 5, WTBHD	7/28/20
F-52	Frame 52	7/28/20
3-1	Fuel Tank	8/3/20
4-1	Console & Seat Skins	7/23/20
4-2	Console Roof	7/23/20
4-3	Helm Seat Box	7/23/20
4-4	Window Set	7/23/20

600 Evans Parts

Response Marine, Inc.

NC Parts for #600- Evans 20'
\\Vikging\V22\Deriv\600 Evans\
revised: 8/5/20

Print Date:

8/5/2020

1/8" Parts- 5052

<u>Part #</u>	<u>Pieces</u>	<u>Description</u>	<u>Bending & (Qty)</u>
CN-1	2	Console Sides	
CN-2	1	Console Front	Y, 1/4" radius (2)
CN-3	1	Console Fwd Seat	Y, 1/4" radius (3)
CN-4	1	Console Aft	Y, 1/4" radius (5)
CN-5	1	Console Fwd Seat Lid	Y, 1/4" radius (3)
SB-1	1	Seat Box Face & Top	Y, 1/4" radius (1)
SB-2	1	Seat Box Face & Ends	Y, 1/4" radius (2)
V-AP	1	Visor Front & Sides, Port	
V-AS	1	Visor Front & Sides, Stbd	
V-B	1	Visor Aft	
J-R	3	Jig- Roof	
J-V0	1	Jig- Visor, Fwd CL	
J-V1	2	Jig-Visor, OS is 12" off CL	
J-V2	4	Jig-Visor, anywhere at sides	
J-V3	3	Jig-Visor, along back, except corner radii	
	24	Total 1/8" parts 5052	

3/16" Parts- 5052

<u>Part #</u>	<u>Pieces</u>	<u>Description</u>	<u>Bending</u>
FWH	2	Fish Well Hatch Lids	1/4" radius (4 each)
ROOF	1	Roof	
S-1	1	Step/Riser at Foredeck	Y, 1/4" radius
S-2	1	Step/Riser, Slanted, at Seatback	
S-3	1	Seat/Step w/ Stow hatch	Y, 1/4" radius (2)
S-4	1	Seat/Step Hatch Lid	Y, 1/4" radius (3)
T-A	1	Tank Body	Y, 1/4" radius (2)
T-BL	1	Tank Baffle, Longitudinal	
T-BT	1	Tank Baffle, Transverse	
T-C	2	Tank End	
T-D	1	Tank Top	
TR-CMPT	1	Transom Compartment	Y, 1/4" radius, (2)
TSS-1BP	1	Topside Stringer/Shelf, F3- Tran, Port	Y, 1/4" radius
TSS-1BS	1	Topside Stringer/Shelf, F3- Tran, Stbd	Y, 1/4" radius
	16	Total 3/16" parts 5052	

3/16" Parts- 5086

<u>Part #</u>	<u>Pieces</u>	<u>Description</u>	<u>Bending</u>
ALB	1	Anchor Locker Bottom	

600 Evans Parts

	BS-3BP	1	Bottom Girder,Transom to F2, Port	Flange B1
	BS-3BS	1	Bottom Girder,Transom to F2, Stbd	Flange B1
1 Extra	BS-3BS-SP	2	Soft Patch, Stbd Girder in Fishwell	
	DB-A	1	Deck Body, F1-2	
	DB-B	1	Deck Body, F2-3	
	DB-C	1	Deck Body F3-F5, Center	
	DB-CP	1	Deck Body F3- Transom, Girder-Margin, Port	
	DB-CS	1	Deck Body F3-Transom, Girder-Margin, Stbd	
	DB-D	1	Deck Body, F52-Transom, Center	
	DM-P	1	Deck Margin F3 to Tran, Port	
	DM-S	1	Deck Margin F3 to Tran, Stbd	
	DSP-C	2	Deck Soft Patch, Console	
	DSP-D	1	Deck Soft Patch, Transom Locker	
	DP-4C	2	Deck Plate Cover, for 4.5" hole	
1 Extra	DP-5	2	Deck Plate Cover, for DP-5R donut	
1 Extra	DP-5R	2	Deck Plate Donut Ring, for bot of deck	
1 Extra	DP-6	3	Deck Plate Cover, for DP-6R donut	
1 Extra	DP-6R	3	Deck Plate Donut Ring, for bot of deck	
	EB-1	1	Engine Bracket, Transom & Sides	Y, 1/2" Radius (2)
	EB-5	1	Engine Bracket Tray	Y, 1/2" Radius
	EB-6	1	Engine Bracket Deck	
	F1	1	Frame 1	
	F2	1	Frame 2	Flange B1
	F3	1	Frame 3 (bottom)	Flange B1
	F31-P	1	Intermediate Frame 31, Port	Flange B1
	F31-S	1	Intermediate Frame 31, Stbd	Flange B1
	F31-UP	1	Intermediate Frame 31, Port, Upper Trunk Side	Flange B1
	F31-US	1	Intermediate Frame 31, Stbd, Upper Trunk Side	Flange B1
	F32-P	1	Intermediate Frame 32, Port	Flange B1
	F32-S	1	Intermediate Frame 32, Stbd	Flange B1
	F3-P	1	Frame 3 Topsides, Port	Flange B1
	F3-S	1	Frame 3 Topsides, Stbd	Flange B1
	F4	1	Frame 4 (bottom)	Flange B1
	F41-P	1	Intermediate Frame 41, Port	Flange B1
	F41-S	1	Intermediate Frame 41, Stbd	Flange B1
	F42-P	1	Intermediate Frame 42, Port	Flange B1
	F42-S	1	Intermediate Frame 42, Stbd	Flange B1
	F5	1	Frame 5 (bottom)	Flange B1
	F51-P	1	Intermediate Frame 51, Port	Flange B1
	F51-S	1	Intermediate Frame 51, Stbd	Flange B1
	F52	1	Intermediate Frame 52, Bulkhead, Aft End of Fishwell	Flange B1
	FWL	1	Fish Well Liner	Y, 1/2" Radius (2)
	KB-1	1	Kicker Bracket, Transom & OB Side	Y, 1/2" Radius
	KB-2	1	Kicker Bracket, Bottom	
	KB-3	1	Kicker Bracket, Tray Side	Y, 1/2" Radius
	SD-AP	1	Side Deck, Forward, Port	
	SD-AS	1	Side Deck, Forward, Stbd	
	SD-BP	1	Side Deck, Port	
	SD-BS	1	Side Deck, Stbd	
	SDC-AP	1	Side Deck Coaming, Fwd Step to F4+, Port	
	SDC-AS	1	Side Deck Coaming, Fwd Step to F4+, Stbd	
	SDC-BP	1	Side Deck Coaming, at Jog, Port	
	SDC-BS	1	Side Deck Coaming, at Jog, Stbd	
	SDC-CP	1	Side Deck Coaming, Aft, Port	
	SDC-CS	1	Side Deck Coaming, Aft, Stbd	

600 Evans Parts

SD-CP	1	Side Deck, Port
SD-CS	1	Side Deck, Stbd
STEM	1	Stem Plate
TK-1	2	Trunk Filler Trim, Bottom
TK-2	2	Trunk Filler Trim, Top
TK-3	2	Trunk Face Soft Patch
TRD	1	Transom Deck
TS-P	1	Topsides, Port
TS-S	1	Topsides, Stbd
	77	Total 3/16 parts 5086

1/4" Parts

<u>Part #</u>	<u>Pieces</u>	<u>Description</u>
B-P	1	Bottom, port
B-S	1	Bottom, stbd
BS-1P	1	Bottom Stringer 1, F3 to Stem, Port
BS-1S	1	Bottom Stringer 1, F3 to Stem, Stbd
BS-2P	1	Bottom Stringer 1, F3 to Stem, Port
BS-2S	1	Bottom Stringer 1, F3 to Stem, Stbd
BS-3AP	1	Bottom Stringer 1, F2 to Stem, Port
BS-3AS	1	Bottom Stringer 1, F2 to Stem, Stbd
BS-4P	1	Bottom Stringer 1, Transom to F2, Port
BS-4S	1	Bottom Stringer 1, Transom to F2, Stbd
EB-2	1	Engine Bracket Transom Stiff
EB-3	1	Engine Bracket CL Deck Stiff
EB-4	2	Engine Bracket, Butt Stiffs
TRAN	1	Transom
TSS-1AP	1	Topside Stringer #1 Stem to F31, Port
TSS-1AS	1	Topside Stringer #1 Stem to F31, Stbd
TSS-2P	1	Topside Stringer #2, Stem to F1, Port
TSS-2S	1	Topside Stringer #2, Stem to F1, Stbd
	19	Total 1/4" parts 5086

Y, 1/2" Radius (2)

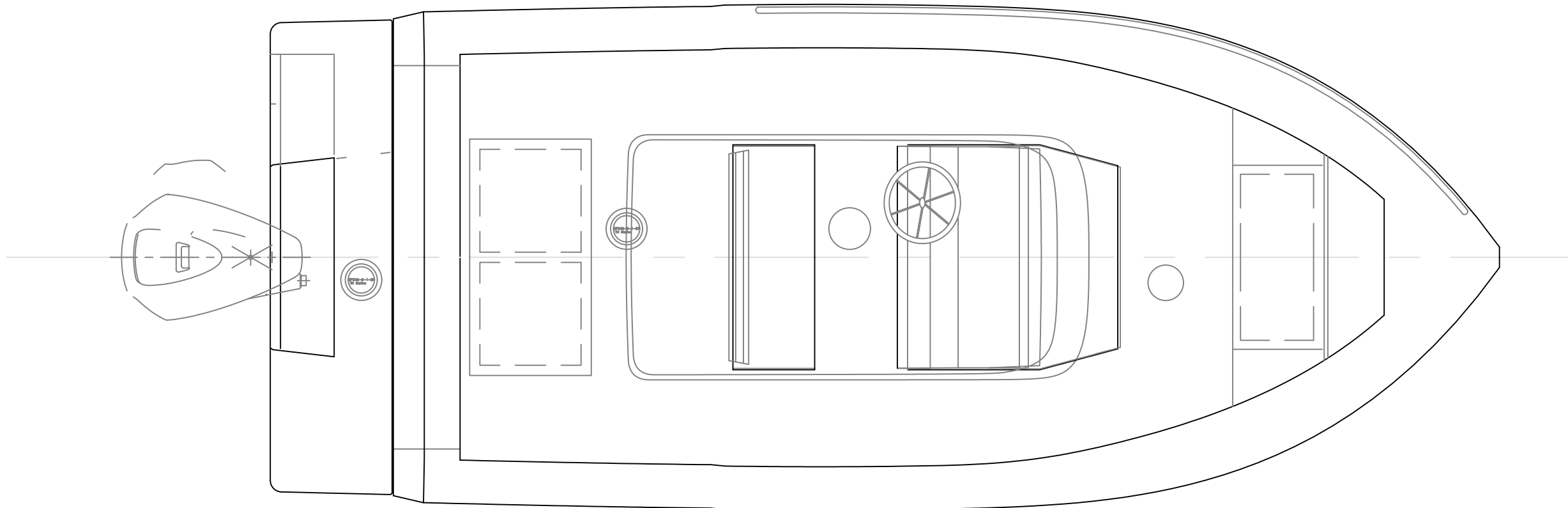
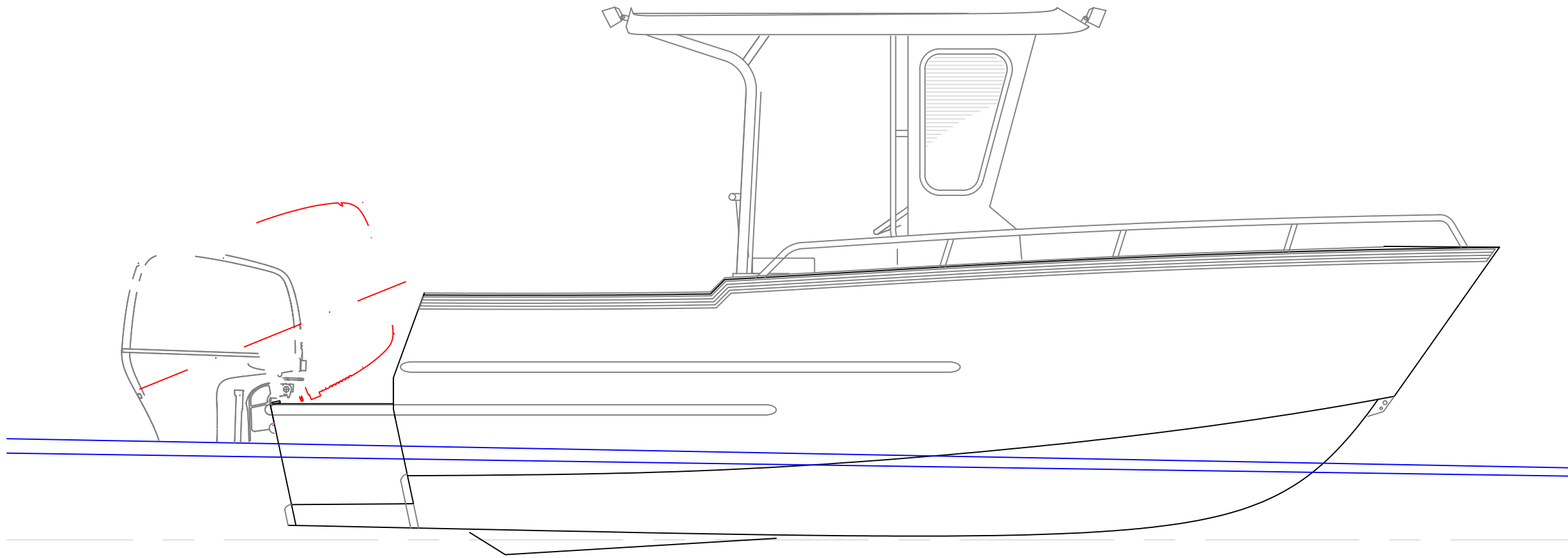
3/8" Parts 5086

<u>Part #</u>	<u>Pieces</u>	<u>Description</u>
C-AP	1	Chine, fwd port
C-AS	1	Chine, fwd stbd
C-BP	1	Chine, aft port
C-BS	1	Chine, aft stbd
EB-7	1	Engine Transom Lip, Trim if no kicker
K-A	1	Keel, fwd
K-B	1	Keel Mid
K-C	1	Keel, Aft
	8	Total 3/8" parts 5086
	144	Total Cut Parts

Response Marine, Inc.
 Extrusion List
 #600, Evans 20' Center Console
 8/5/2020

EXTRUSION

<u>QTY</u>	<u>Alloy</u>	<u>Item</u>	<u>Lgth (ft)</u>	<u>lbs/ft</u>	<u>lbs</u>	<u>\$/lb</u>	<u>\$</u>
5	6061 T6	Sq. Tube 1.5" x .125"	24	.809	97		Decks & Console
1	6061 T6	Round Tube 1.5" OD x .125" wall	12	.635	8		Fuel Fill
1	6061 T6	Round Tube 3.5" OD x .125" wall <or may substitute 3" Pipe, Sch 10>	12	1.328	16		Conduit/Collars
1	6061 T6	Pipe .75" Sch 40	20	.39	8		Console handrails
1	6061 T6	Pipe 1" Sch 40	20	.58	12		Gutter drain, some straight HR sections
1	6061 T6	Pipe 1.5" Sch 80	20	1.26	25		Fishwell Drain
3	6063	Pipe 1" sch 40	20	.58	35		HR
3	6063	Pipe 1.5" sch 40	20	.94	56		Roof Rail, Lwr strakes & Platform
2	6063	Pipe 2", sch 40	20	1.26	50		Sheer Rub
2	6061 T6	Flat Bar 1.5" x .190"	12	.332	8		Flanges
1	6061 T6	Flat Bar 2" x .190"	12	.443	5		Flanges
1	6061 T6	Channel, 2x1x.130", .58#, A.A.	25	.58	15		Roof
1	6061 T6	Channel 2"x1.25", 1.07#, A.A.	25	1.07	27		Gutters
2	6061 T6	Channel, 6"x1.95", 3#, A.S.	25	3.00	150		Jig
1	6061 T6	Angle 1.5"x1.5"x.190"	25	.622	16		Tank, Misc Stiffs
					Sub Total	527	



OUTBOARD VIEWS

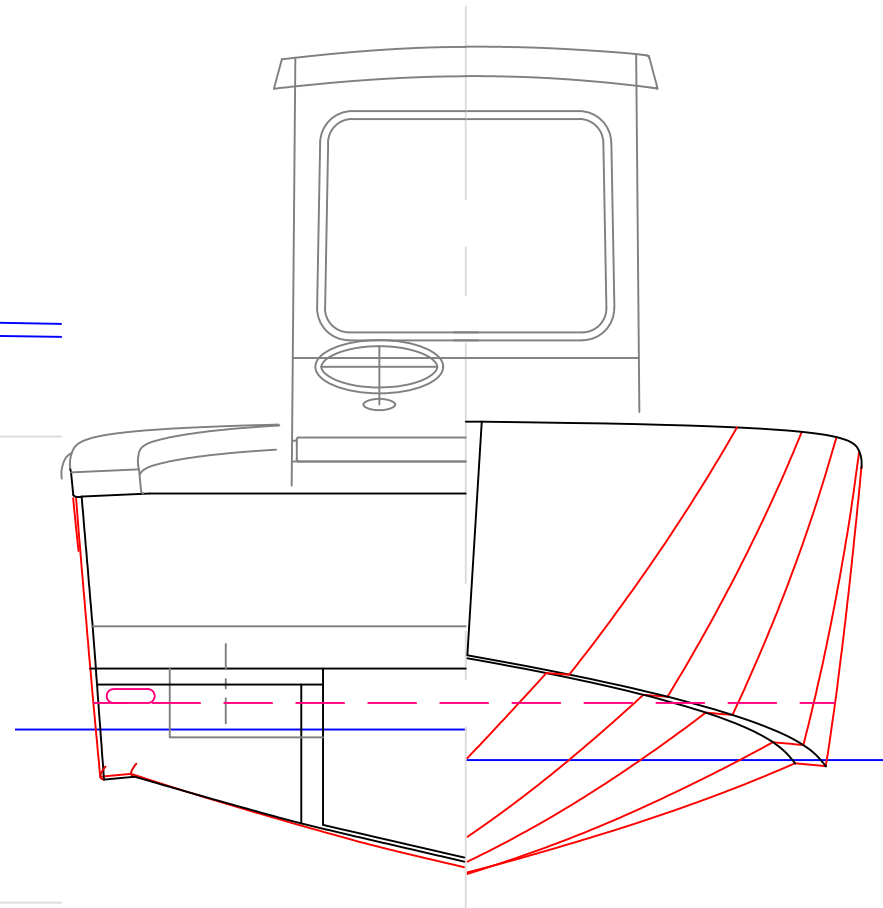
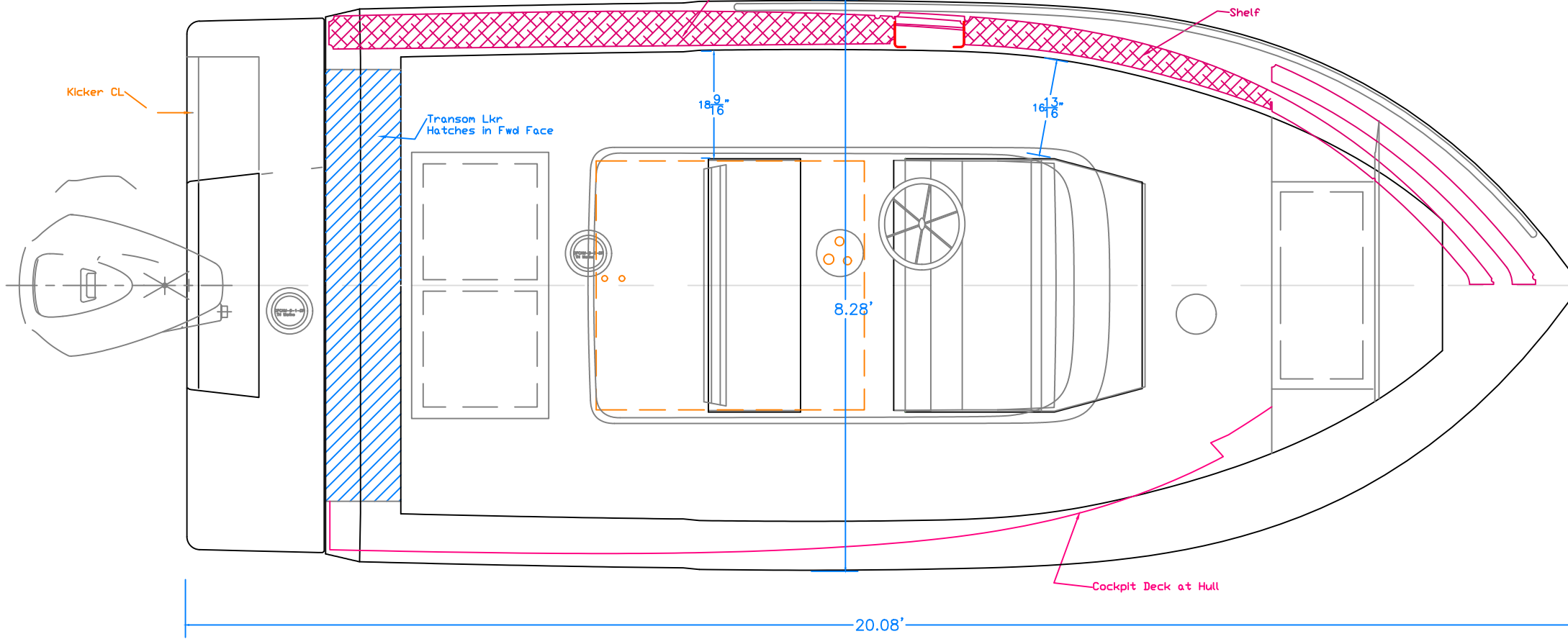
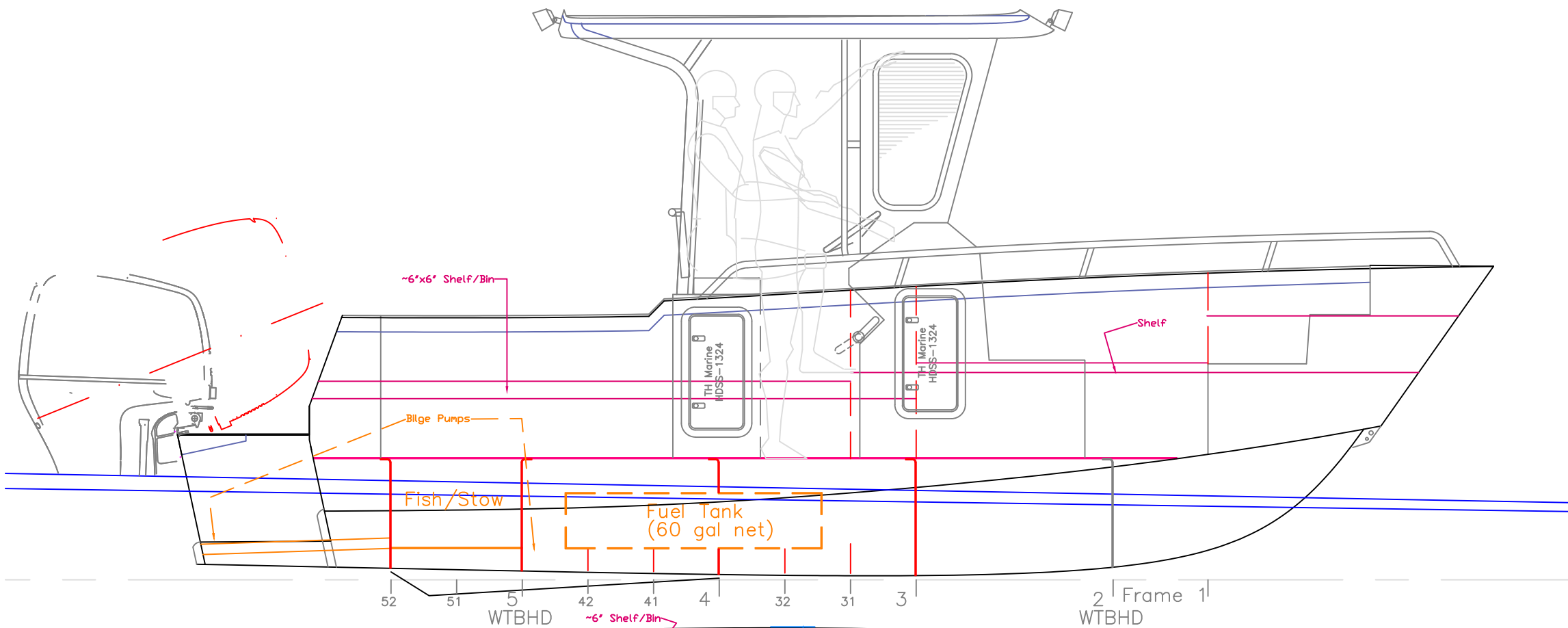
20'x8.3' Skiff

For: Jim Evans

SCALE 1/2" = 1'	DES/DWN WAL	DATE 8/5/20
--------------------	----------------	----------------

Response Marine, Inc.		REV
Newburyport, MA	www.responsemarine.com	DWG NO. 600-1

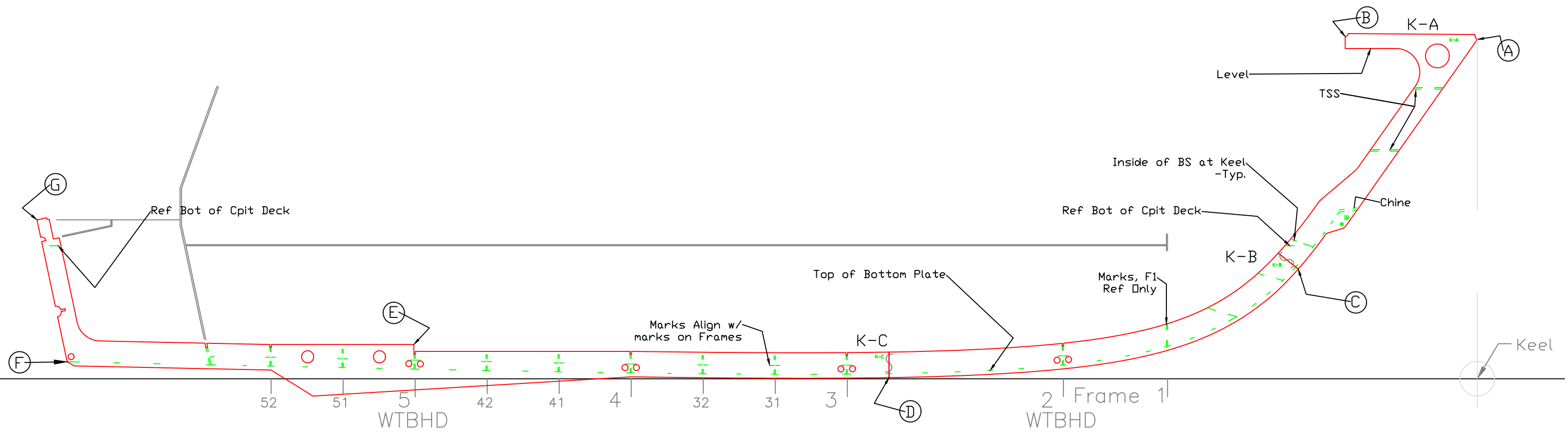
REV.	DESCRIPTION



INBOARD & END VIEWS
 20'x8.3' Skiff
 For: Jim Evans

SCALE 1/2" = 1'	DES/DWN WAL	DATE 8/5/20
Response Marine, Inc. Newburyport, MA, www.responsemarine.com		REV DWG NO. 600-2

REV.	DESCRIPTION



Response Marine, Inc.
 #600 20' CC
 Keel Points

7/23/20

Notes - sixteenths		Feet	
Horizontal	Vertical	Horizontal	Vertical

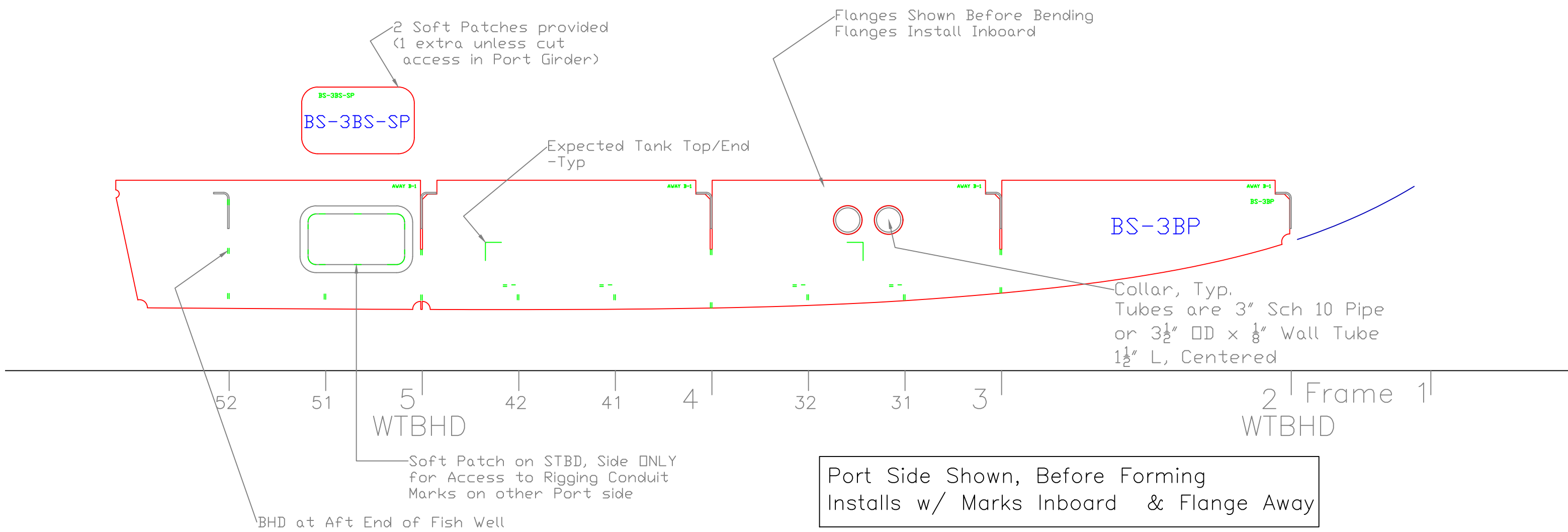
1
 2
 3
 4
 5
 6
 7
 8
 9
 10
 11
 12
 13
 14
 15
 16
 17
 18
 19
 20
 21
 22
 23
 24
 25
 26
 27
 28
 29
 30
 31
 32
 33
 34
 35
 36
 37
 38
 39
 40
 41
 42
 43
 44
 45
 46
 47
 48
 49
 50
 51
 52
 53
 54
 55
 56
 57
 58
 59
 60
 61
 62
 63
 64
 65
 66
 67
 68
 69
 70
 71
 72
 73
 74
 75
 76
 77
 78
 79
 80
 81
 82
 83
 84
 85
 86
 87
 88
 89
 90
 91
 92
 93
 94
 95
 96
 97
 98
 99
 100

ALIGNED NOTES	
Horizontal	Vertical

1
 2
 3
 4
 5
 6
 7
 8
 9
 10
 11
 12
 13
 14
 15
 16
 17
 18
 19
 20
 21
 22
 23
 24
 25
 26
 27
 28
 29
 30
 31
 32
 33
 34
 35
 36
 37
 38
 39
 40
 41
 42
 43
 44
 45
 46
 47
 48
 49
 50
 51
 52
 53
 54
 55
 56
 57
 58
 59
 60
 61
 62
 63
 64
 65
 66
 67
 68
 69
 70
 71
 72
 73
 74
 75
 76
 77
 78
 79
 80
 81
 82
 83
 84
 85
 86
 87
 88
 89
 90
 91
 92
 93
 94
 95
 96
 97
 98
 99
 100

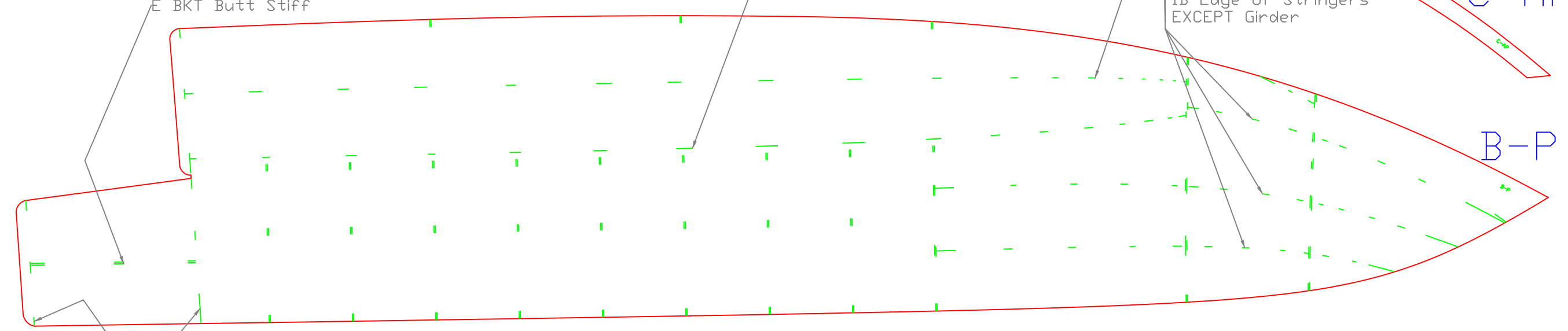
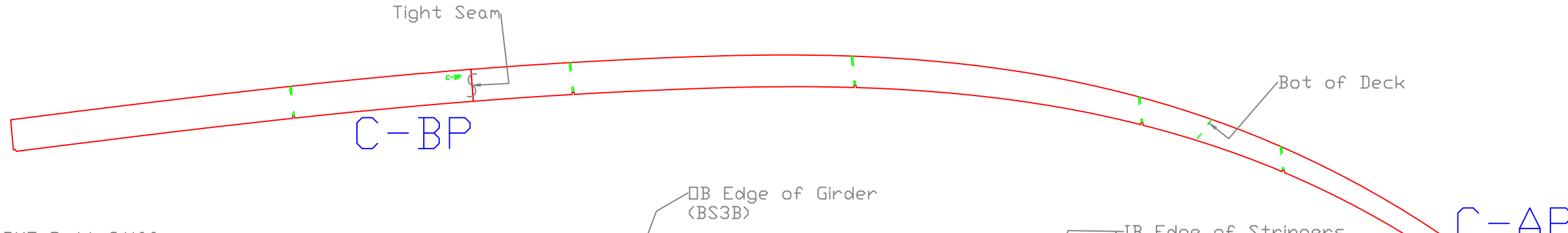
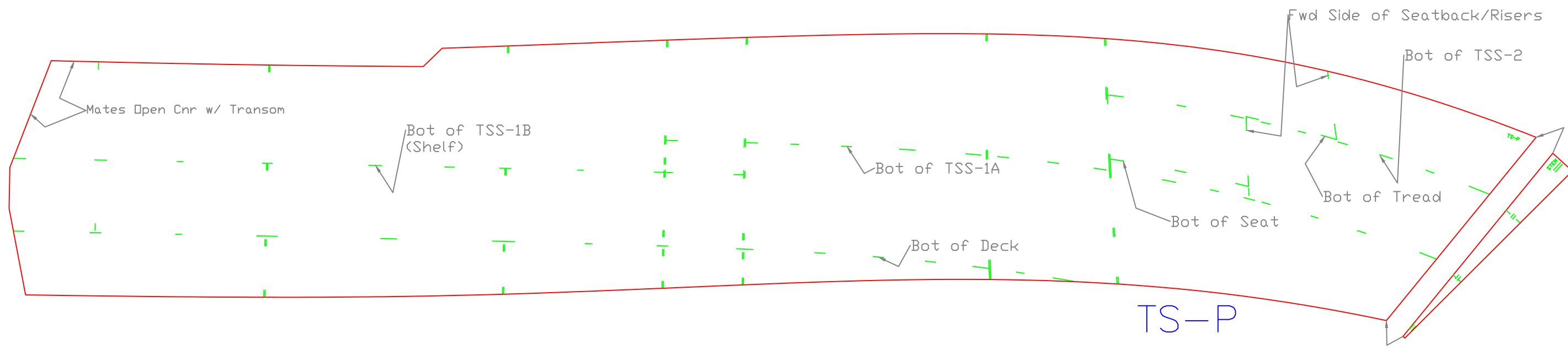
KEEL LAYOUT		
#600 20' CC		
SCALE 3/4" = 1'	DES/DWN WAL	DATE 7/26/20
Response Marine, Inc. Newburyport, MA, www.responsemarine.com		REV DWG NO. 600-2-1

REV.	DESCRIPTION



GIRDER		
#600 20' CC		
SCALE 1" = 1'	DES/DWN WAL	DATE 7/26/20
Response Marine, Inc.		REV
Newburyport, MA, www.responsemarine.com		DWG NO. 600-2-2

REV.	DESCRIPTION



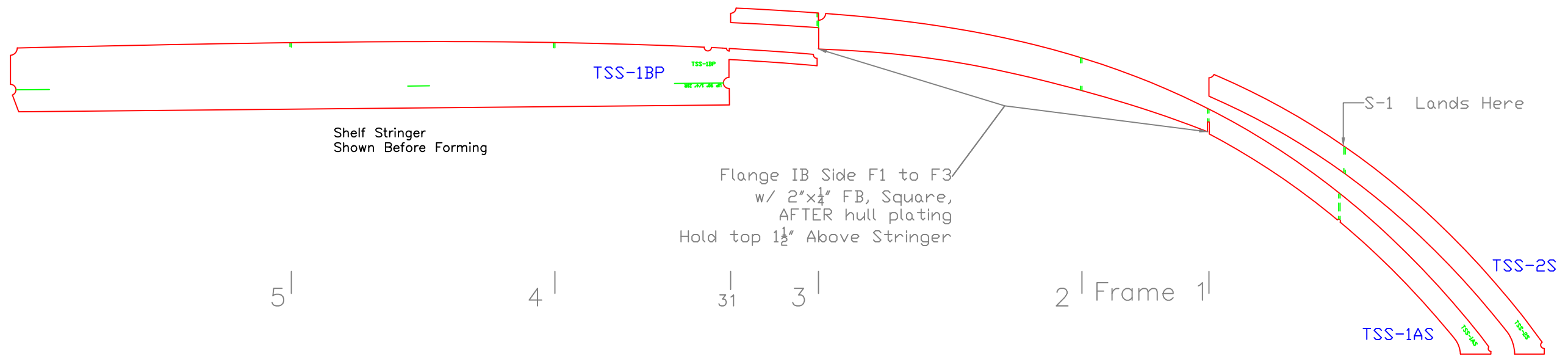
52 51 5 WT BHD 42 41 4 32 31 3 2 Frame 1 WT BHD

Intermediate Frames End at Girder

Fwd Side of Transoms

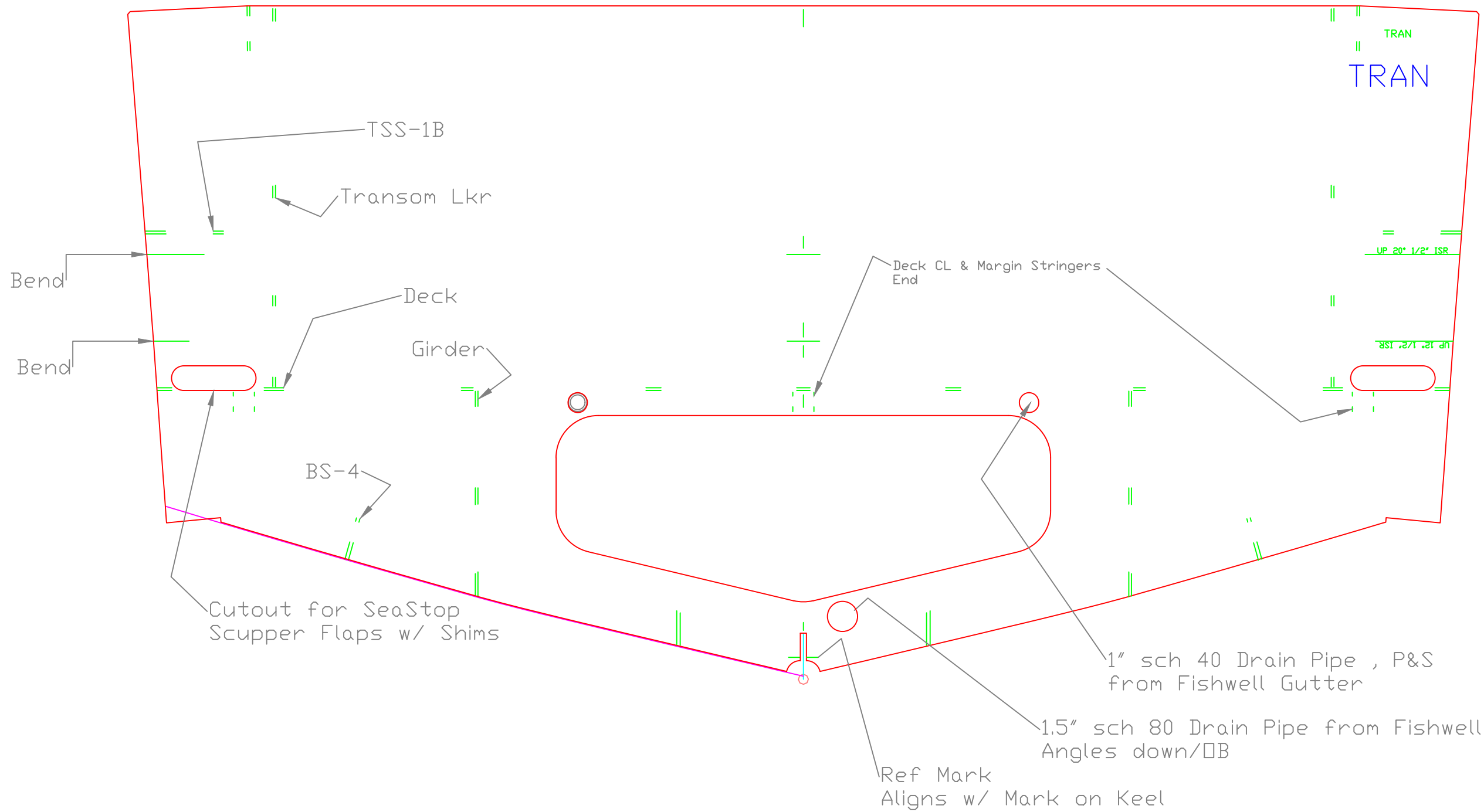
HULL PLATES		
#600 20' CC		
SCALE 3/4" = 1'	DES/DWN WAL	DATE 7/26/20
Response Marine, Inc. Newburyport, MA, www.responsemarine.com		REV DWG NO. 600-2-3

REV.	DESCRIPTION



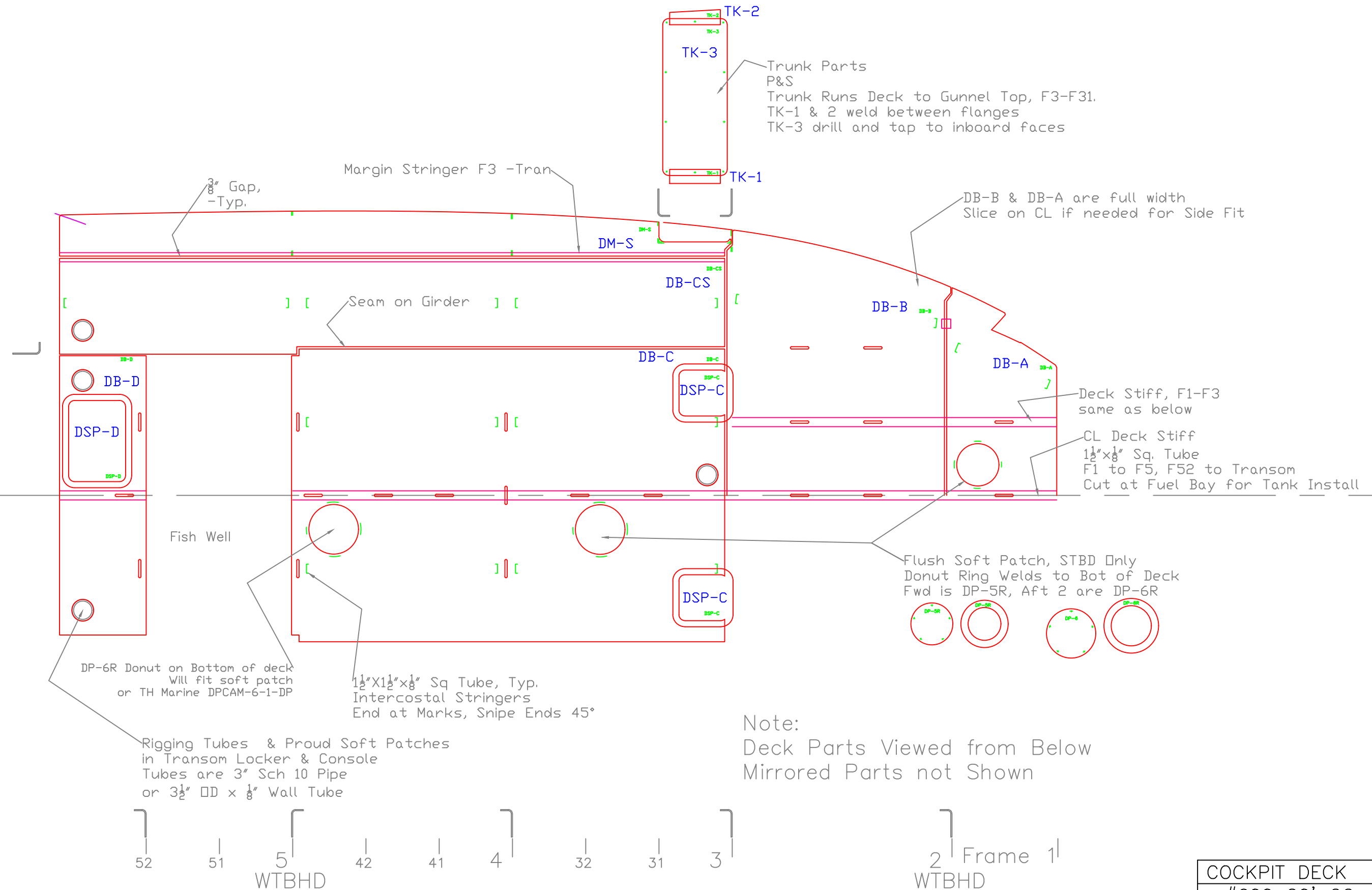
HULL PLATES		
#600 20' CC		
SCALE 3/4" = 1'	DES/DWN WAL	DATE 7/26/20
Response Marine, Inc. Newburyport, MA, www.responsemarine.com		REV DWG. NO. 600-2-3a

REV.	DESCRIPTION



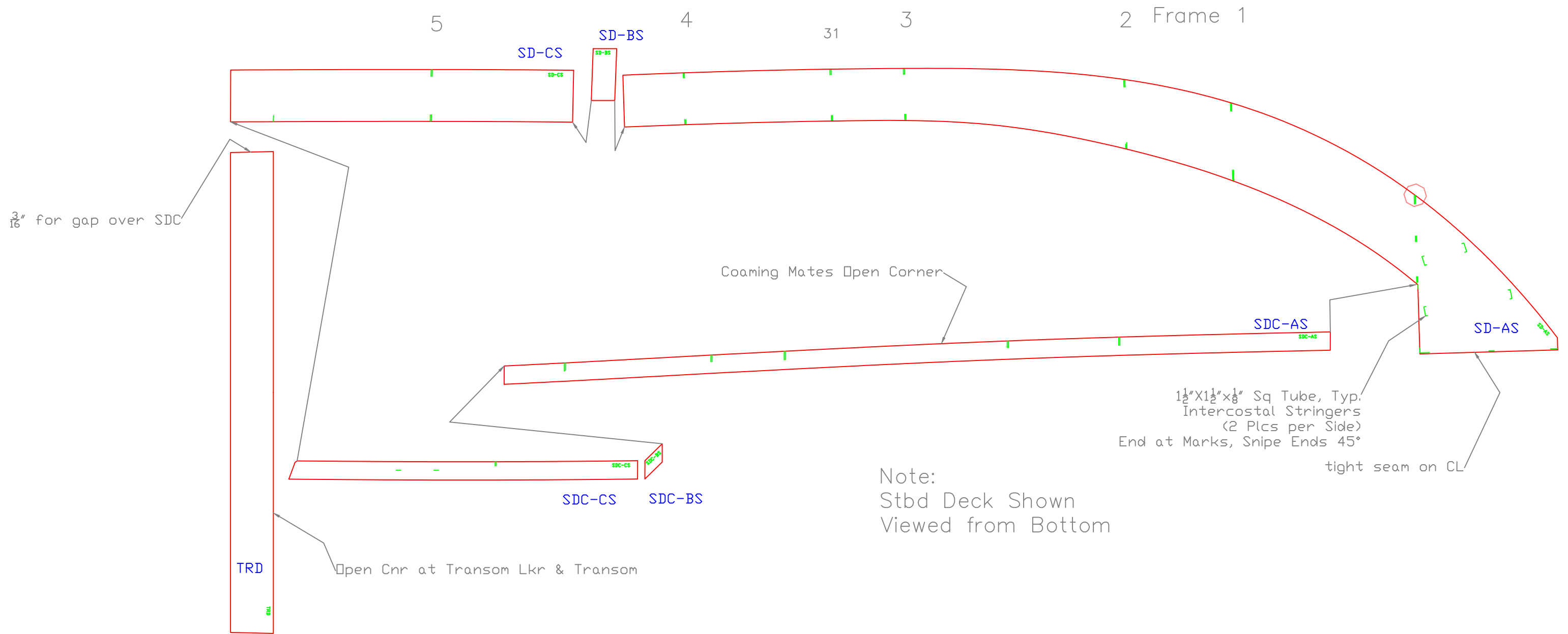
TRANSOM		
#600 20' CC		
SCALE 1 1/2" = 1'	DES/DWN WAL	DATE 7/26/20
Response Marine, Inc. Newburyport, MA www.responsemarine.com		REV DWG NO. 600-2-4

REV.	DESCRIPTION



COCKPIT DECK		
#600 20' CC		
SCALE 3/4" = 1'	DES/DWN WAL	DATE 7/26/20
Response Marine, Inc. Newburyport, MA, www.responsemarine.com		REV DWG NO. 600-2-5

REV.	DESCRIPTION



Coaming Mates Open Corner

Open Cnr at Transom Lkr & Transom

Note:
Stbd Deck Shown
Viewed from Bottom

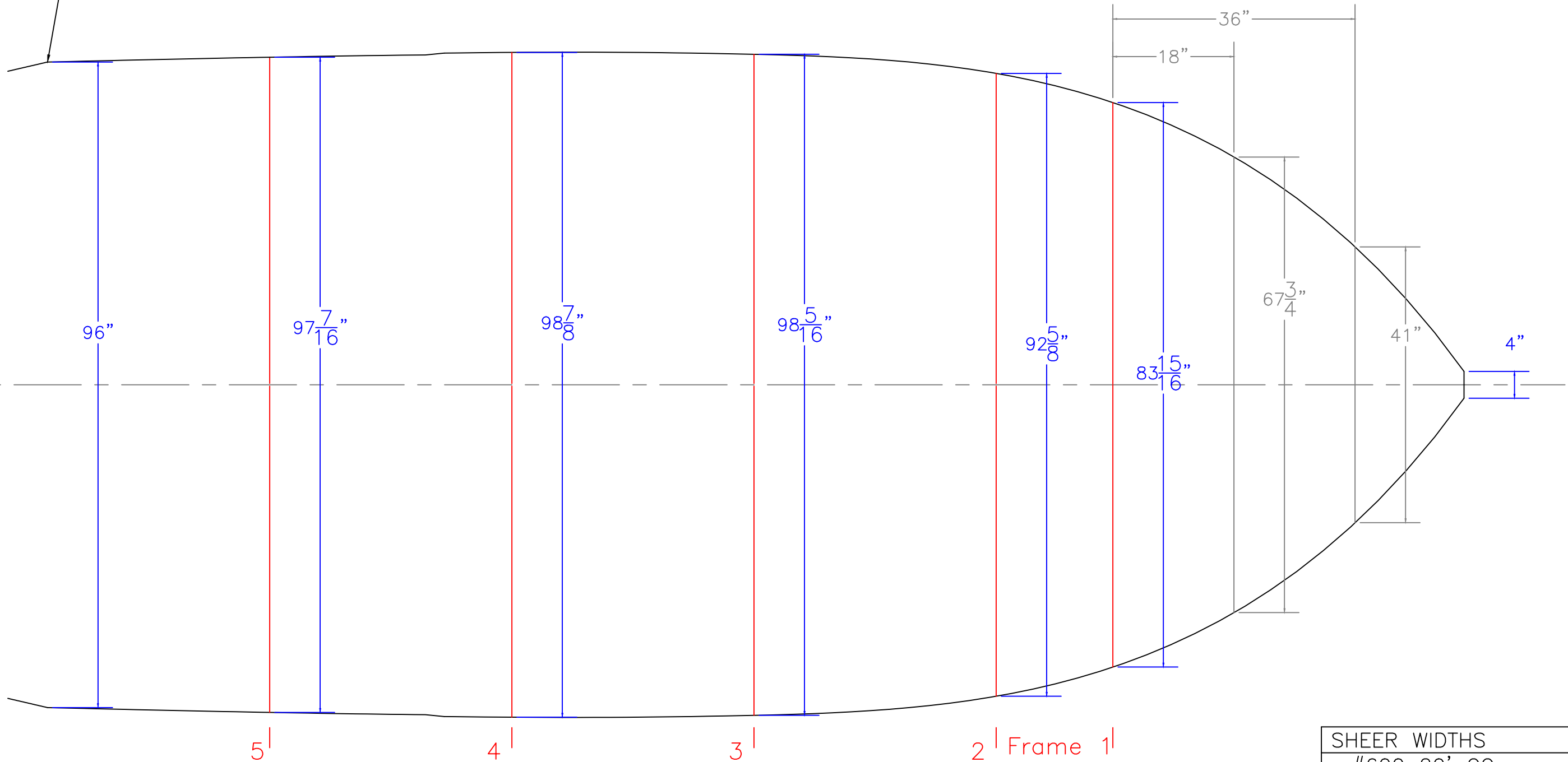
1 1/2" X 1 1/2" X 1/8" Sq Tube, Typ.
Intercostal Stringers
(2 Plcs per Side)
End at Marks, Snipe Ends 45°
tight seam on CL

SIDE DECKS		
#600 20' CC		
SCALE 3/4" = 1'	DES/DWN WAL	DATE 7/26/20
Response Marine, Inc. Newburyport, MA, www.responsemarine.com		REV DWG NO. 600-2-6

REV.	DESCRIPTION

Dimensions are Inside of Topside Plate at Sheer
 Taken at Front Side of Frames, or at noted location

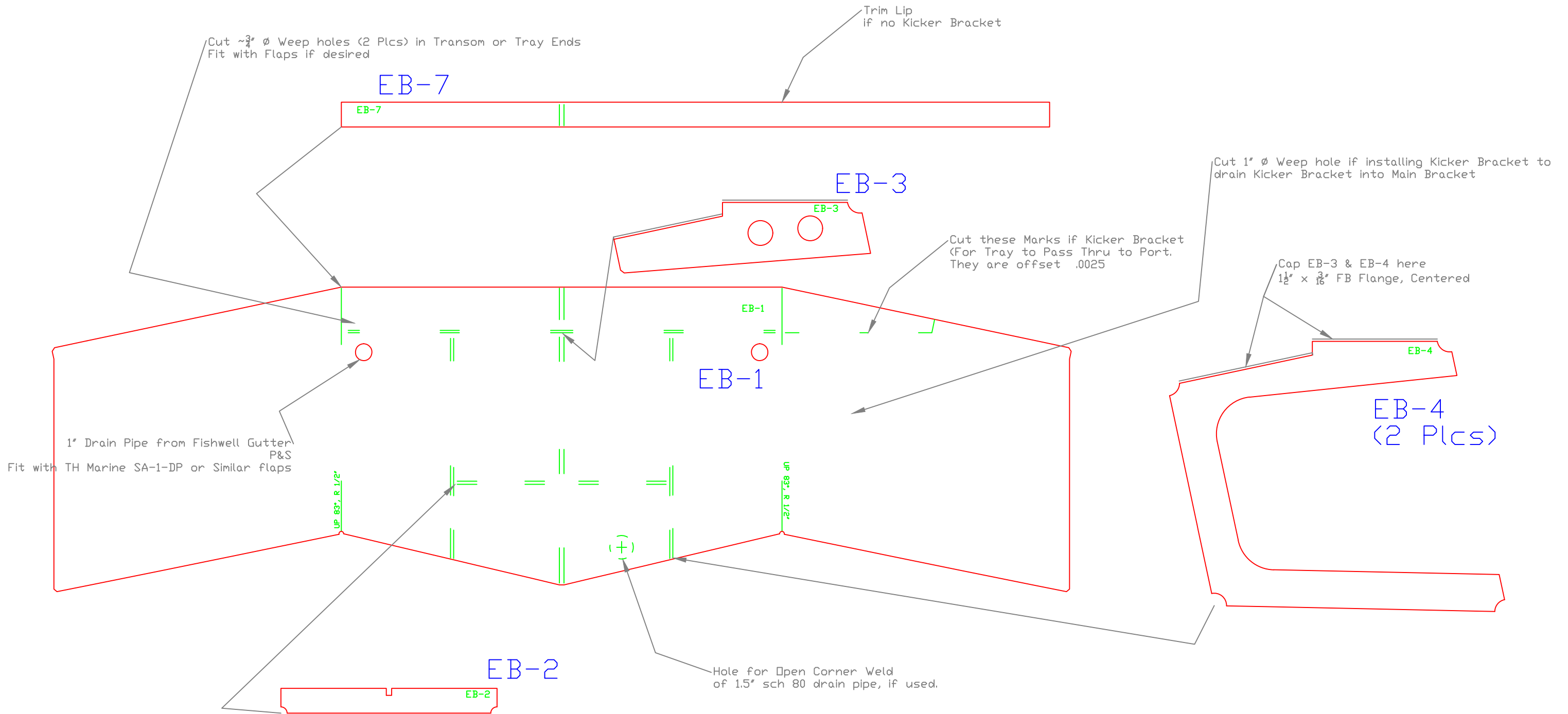
Sheer at False Transom



5 | 4 | 3 | 2 | Frame 1 |

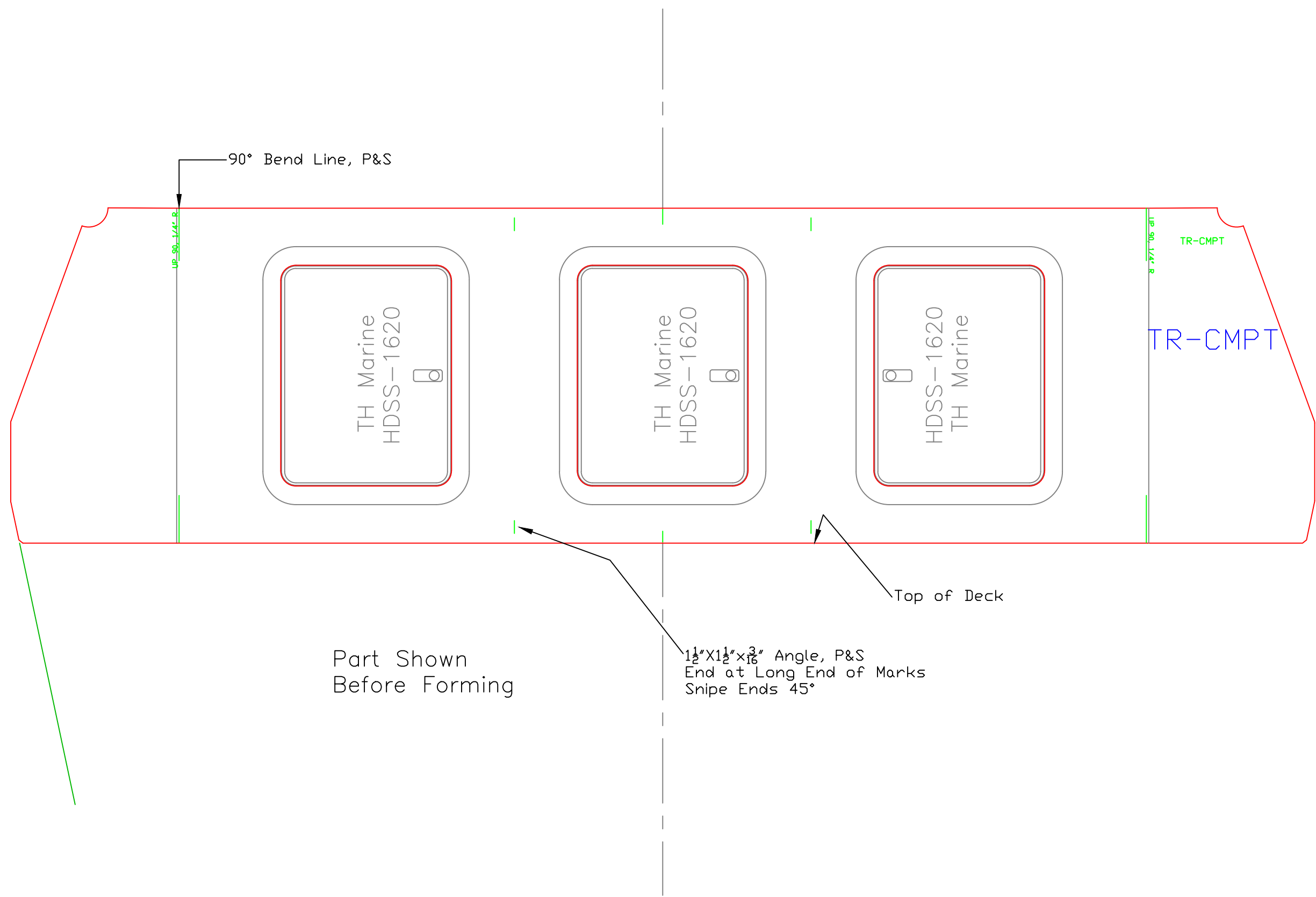
SHEER WIDTHS		
#600 20' CC		
SCALE 3/4" = 1'	DES/DWN WAL	DATE 7/26/20
Response Marine, Inc. Newburyport, MA, www.responsemarine.com		REV DWG. NO. 600-2-7

REV.	DESCRIPTION



Engine Bracket		
#600 20' CC		
SCALE 1 1/2" = 1'	DES/DWN WAL	DATE 8/3/20
Response Marine, Inc. Newburyport, MA, www.responsemarine.com		REV DWG. NO. 600-2-10

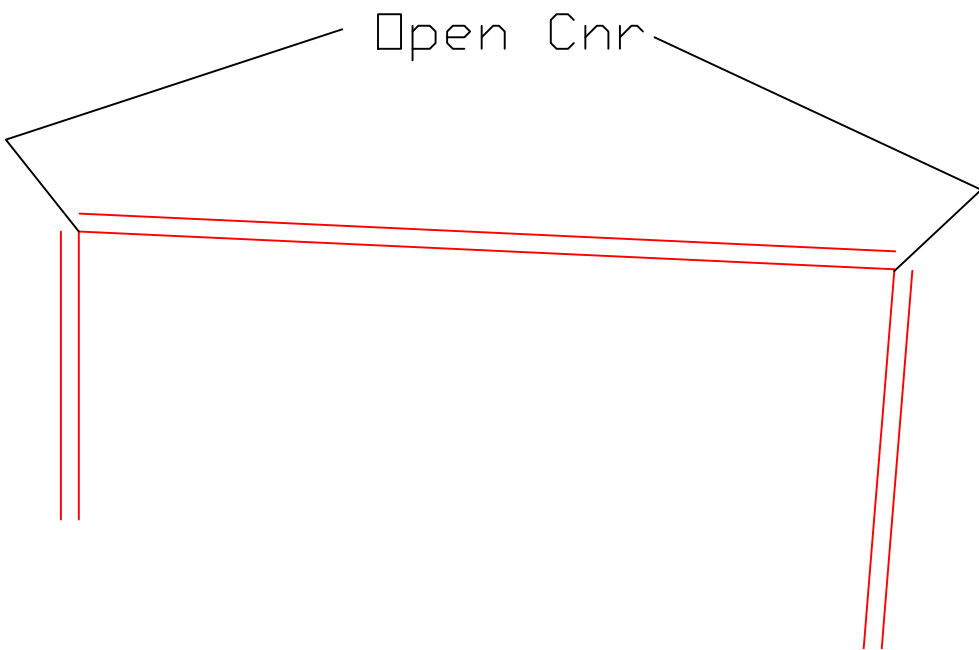
REV.	DESCRIPTION



9.

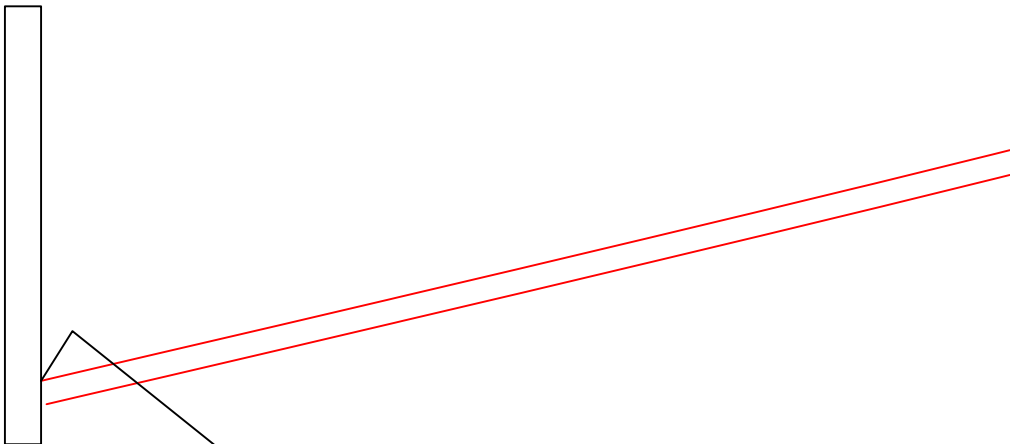
Transom Compartment		
#600 20' CC		
SCALE 1 1/2" = 1'	DES/DWN WAL	DATE 8/3/20
Response Marine, Inc. Newburyport, MA www.responsemarine.com		REV DWG NO. 600-2-13

REV.	DESCRIPTION



Bot PL overlaps ~ 1/4" on Chine

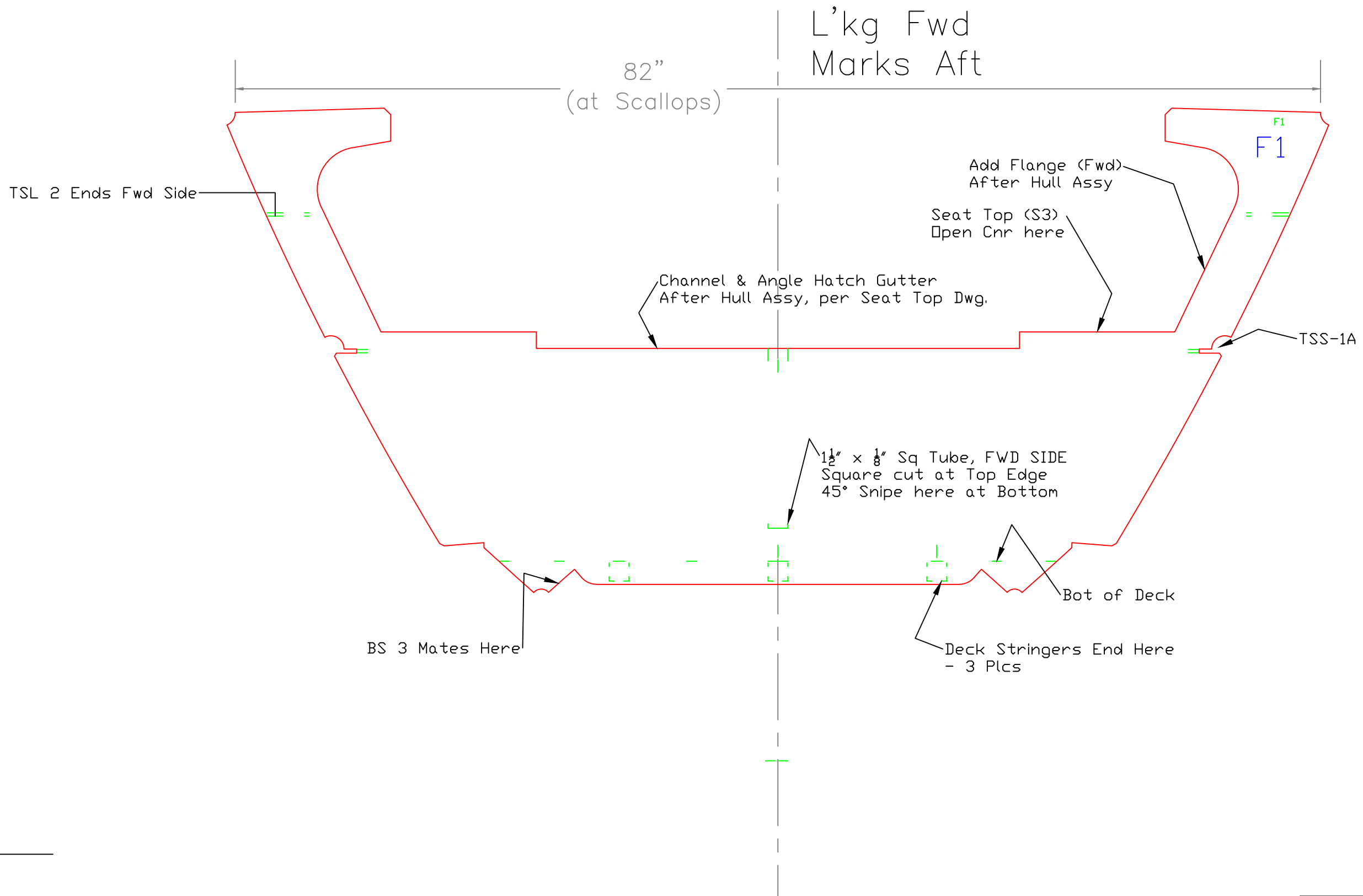
TS Plate IS Corner mates with Chine OS/Bottom Corner



Aligns w/ Rabbet marks on Keel.

Typical Skin Joints		
#600 20' CC		
SCALE 6" = 1'	DES/DWN WAL	DATE 8/3/20
Response Marine, Inc. Newburyport, MA www.responsemarine.com		REV DWG NO. 600-C-1

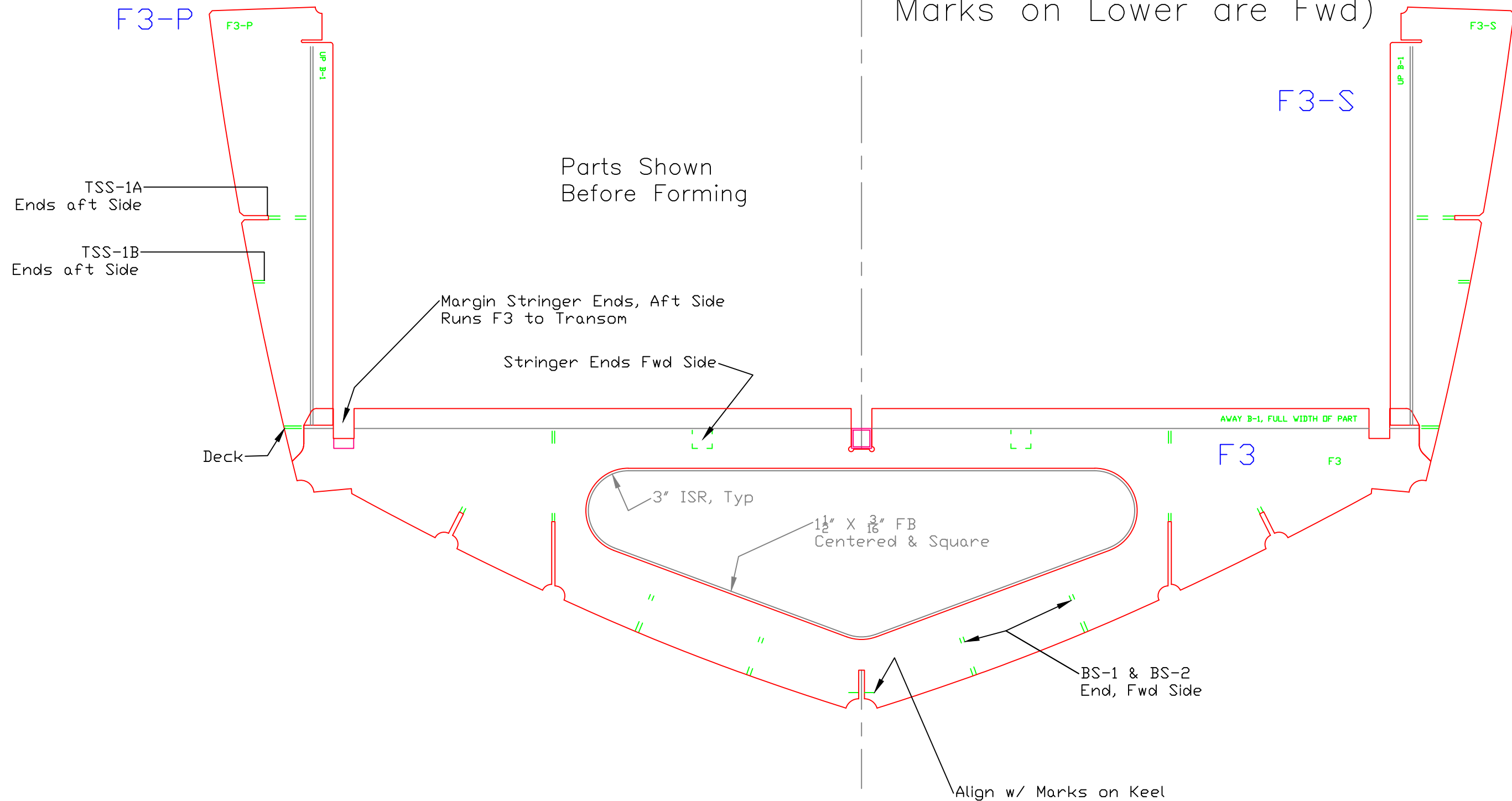
REV.	DESCRIPTION



Frame 1		
#600 20' CC		
SCALE 1 1/2" = 1'	DES/DWN WAL	DATE 7/28/20
Response Marine, Inc. Newburyport, MA, www.responsemarine.com		REV DWG NO. 600-F-1

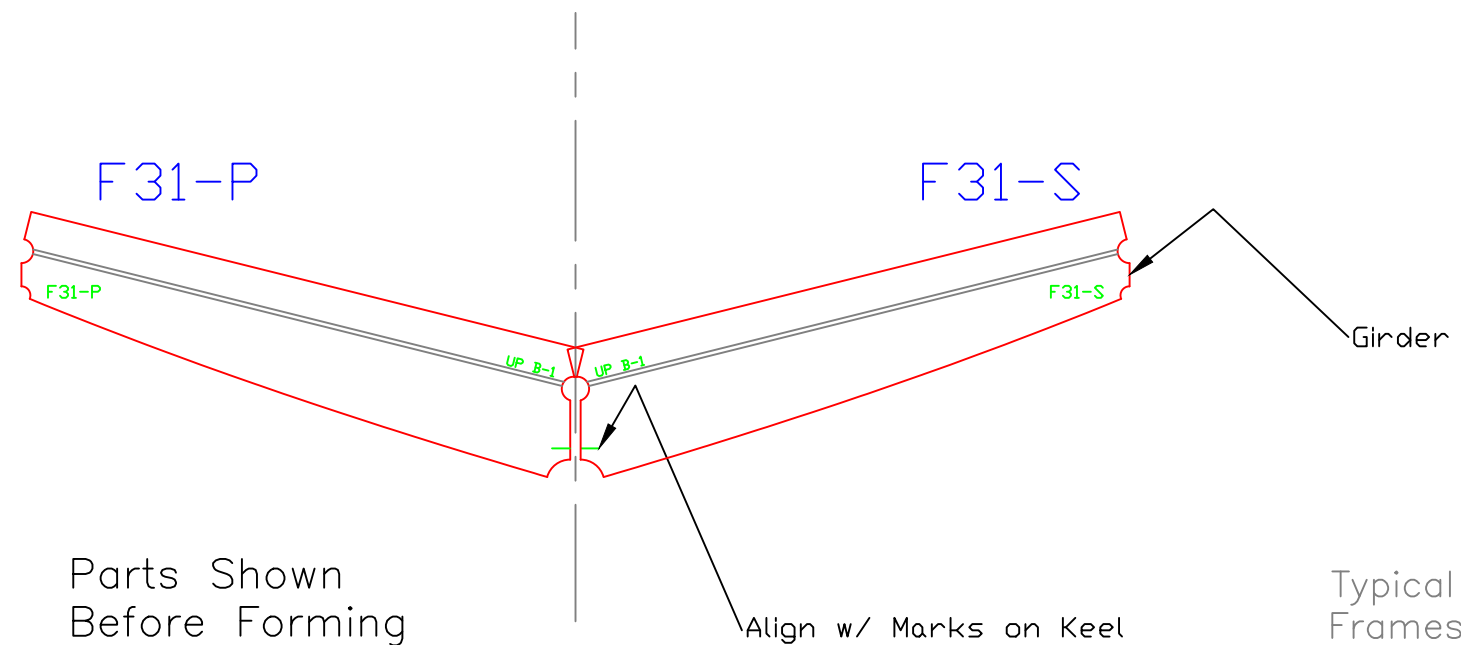
REV.	DESCRIPTION

Install w/ All Flanges AFT
 (Marks on Uppers are Aft &
 Marks on Lower are Fwd)



Frame 3		
#600 20' CC		
SCALE 1 1/2" = 1'	DES/DWN WAL	DATE 7/28/20
Response Marine, Inc. Newburyport, MA, www.responsemarine.com		REV DWG. NO. 600-F-3

REV.	DESCRIPTION



Parts Shown
Before Forming

Align w/ Marks on Keel

Typical Intermediate Frame
Frames:
31,32,41,42, & 51

L'kg FWD
Marks & Flange Aft

Frame 31, Lower		
#600 20' CC		
SCALE 1 1/2" = 1'	DES/DWN WAL	DATE 7/28/20
Response Marine, Inc. Newburyport, MA, www.responsemarine.com		REV DWG NO. 600-F-31

REV.	DESCRIPTION

L'kg Aft
Marks & Flanges Fwd

Part Shown
Before Forming

1 1/2" sch 40 Pipe conduit, Port Side
open Corner at each end
F52 to F5

CL Stringer Ends Fwd Side

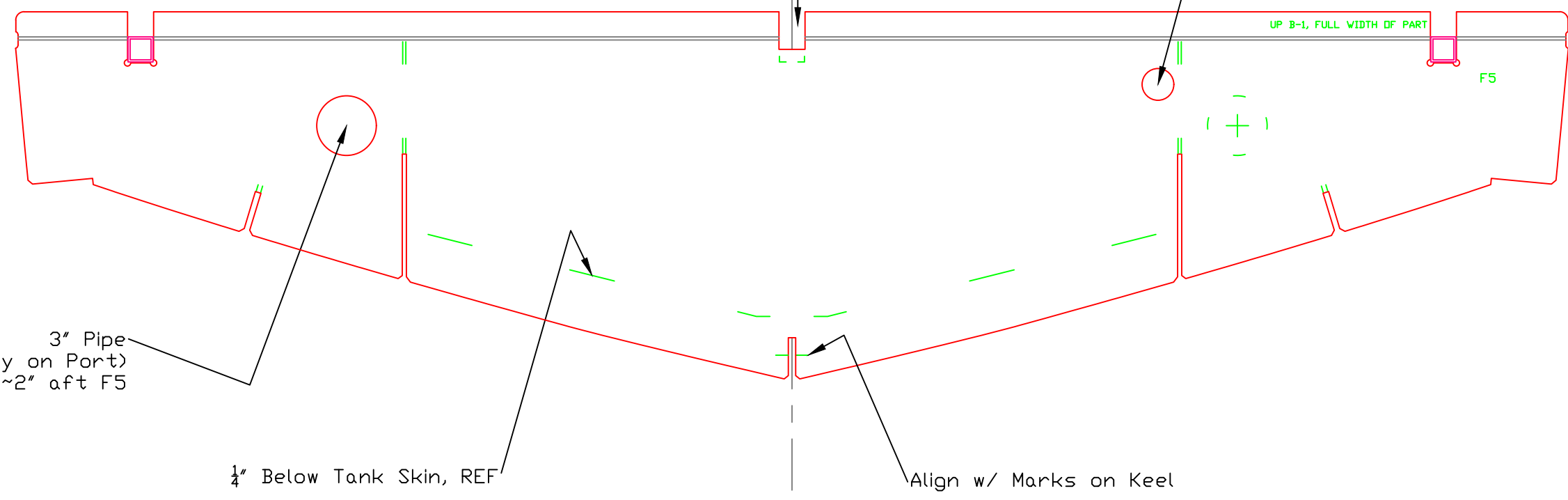
UP B-1, FULL WIDTH OF PART

F5

3" Pipe
Stbd (Mark Only on Port)
Ends ~2" aft F5

1/4" Below Tank Skin, REF

Align w/ Marks on Keel



Frame 5, WTBHD		
#600 20' CC		
SCALE 1 1/2" = 1'	DES/DWN WAL	DATE 7/28/20
Response Marine, Inc. Newburyport, MA, www.responsemarine.com		REV DWG NO. 600-F-5

REV.	DESCRIPTION