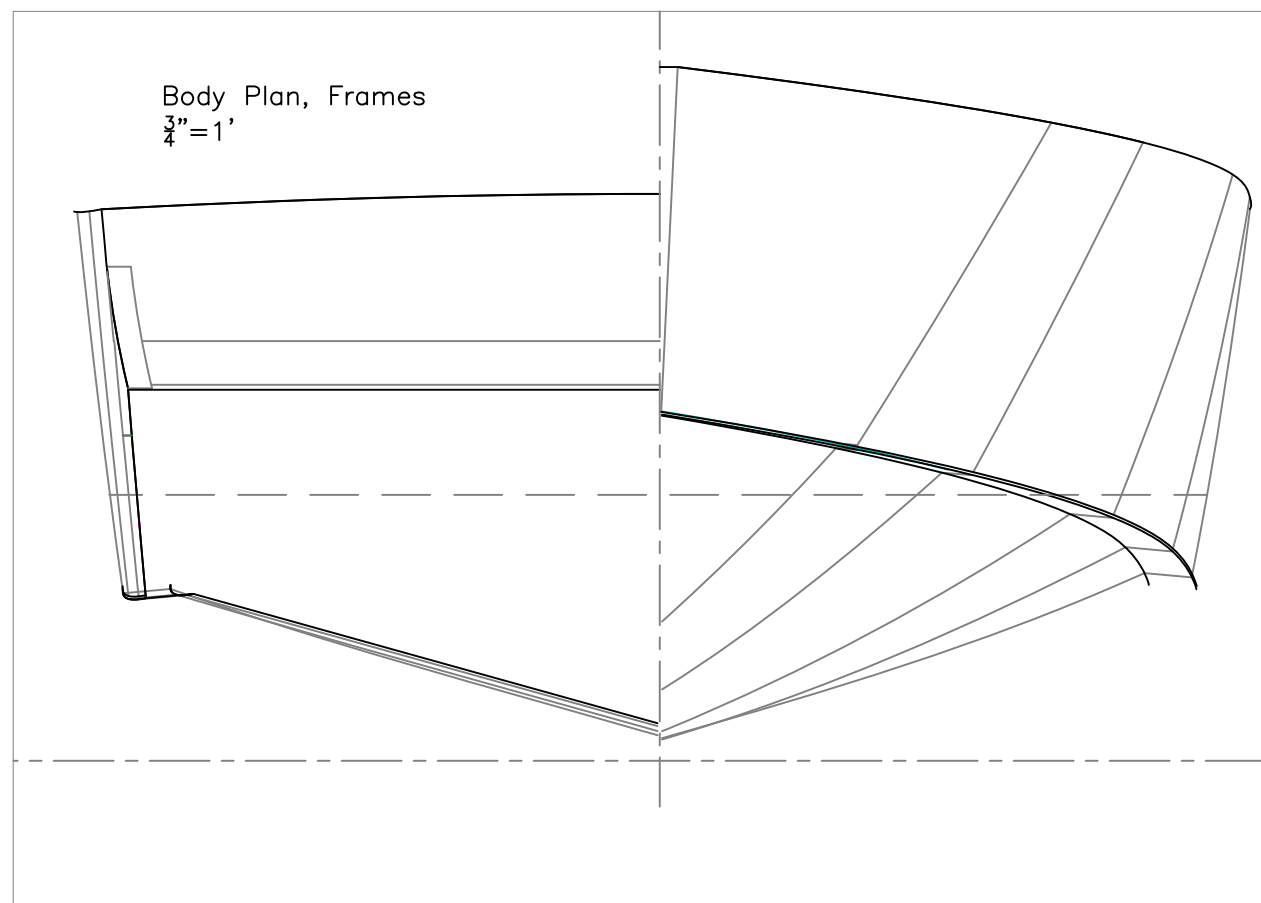
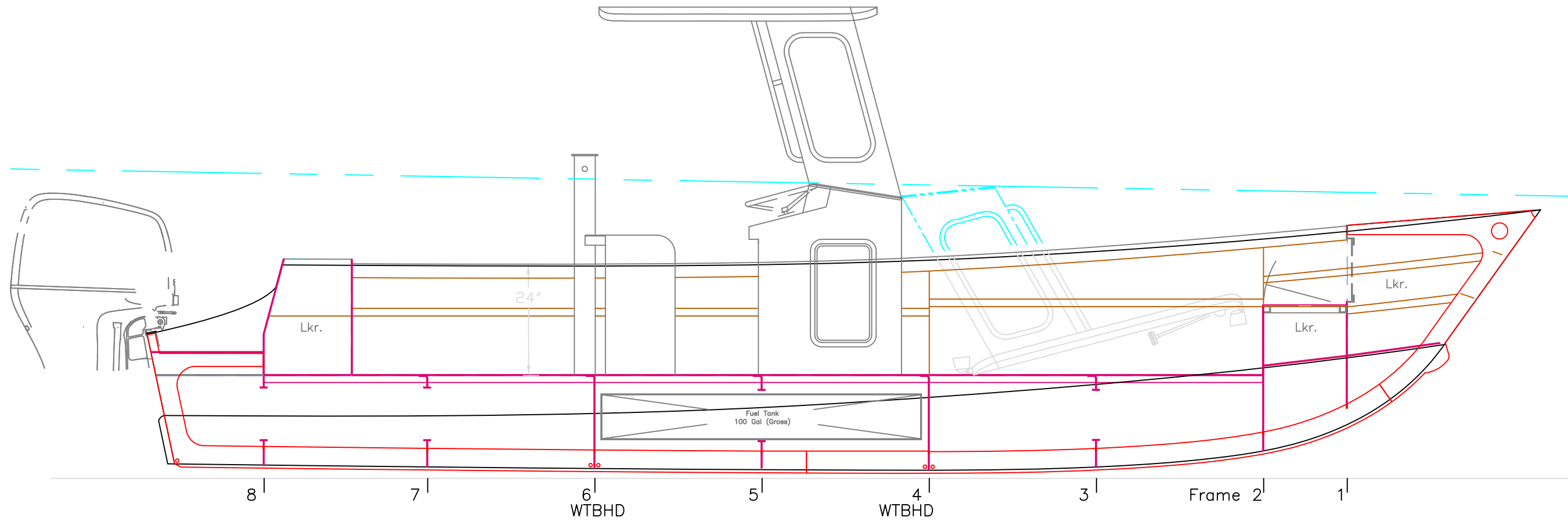


OUTBOARD VIEWS		
25'x8'3" CC, Pointview		
SCALE 1/2" = 1'	DES/DWN WAL	DATE 12/20/17
REV.	DESCRIPTION	DWG NO. 563-2
Response Marine, Inc. Newburyport, MA, www.responsemarine.com		



INB'D PROFILE & BODY PLAN		
25'x8'3" CC, Pointview		
SCALE 1/2" = 1'	DES/DWN WAL	DATE 12/20/17
REV.		DWG NO. 563-3

REV. DESCRIPTION

Response Marine, Inc.
Newburyport, MA, www.responsemarine.com

DRAWING LIST

Design	Dwg	Description	Customer	Date
Response Marine, Inc. Design #563				
Mazza/Pointview Marina 25' Twin OB CC				
Rev. 12/20/17				
	563 -1	General Profile		11/21/17
	-2	Outboard Views		12/20/17
	-3	Inboard Profile & Body Plan		12/20/17
	2-1	Keel Layout		12/14/17
	2-2	Bottom Layout		12/14/17
	2-3	Side Layout		12/14/17
	2-4	Cockpit Deck		12/14/17
	2-5	Engine Deck & Scupper Tubes		12/14/17
	2-6	Anchor & Step Locker Bottoms		12/14/17
	2-7	Transom		12/14/17
	2-8	Side Decks		12/14/17
	2-9	Transom Bulkhead		12/14/17
	2-10	Sheer Width Dimensions		12/14/17
	2-11	Step Locker		12/14/17
	2-12	Push Knees		12/14/17
	3-1	Fuel Tank		12/14/17
	4-1	Console & Windshield		12/14/17
	4-2	Windshield Flanges & Hinge		12/14/17
	4-3	Console Roof		12/14/17
	4-3	Leaning Post		12/14/17
	B-1	Flange "B1" Details		12/14/17
	C-1	Typical Bottom Joints		12/14/17
	F-R	Frame Dimensions		12/14/17
	F1	Frame 1		12/14/17
	F2	Frame 2		12/14/17
	F3	Frame 3		12/14/17
	F4	Frame 4		12/14/17
	F5	Frame 5		12/14/17
	F6	Frame 6		12/14/17
	F7	Frame 7		12/14/17
	F8	Frame 8 / False Transom		12/14/17

Response Marine, Inc. **Stock List**
 Dsgn # 563, File: 25' for Mazza
 revised: 12/19/17

ORDERED from PIERCE

SHEET/PLATE- NC Cut- Pierce Nesting

<u>QTY</u>	<u>Alloy</u>	<u>Thick</u>	<u>Width</u>	<u>Lngth</u>	approx. <u>lbs/ft^2</u>	<u>lbs</u>
1	5052	0.190	60	240	2.7	270
1	5052	0.190	72	240	2.7	324
1	5052	0.190	48	144	2.7	130
3	5086 H116	0.190	96	288	2.7	1,555
2	5086 H116	0.250	60	288	3.6	864
2	5086 H116	0.375	48	144	5.4	518
Sub Total						3,661

Response Marine, Inc.
 Dsgn # 563, File: 25' for Mazza
 revised: 12/13/17

SHEET/PLATE- BLANK

	<u>QTY</u>	<u>Alloy</u>	<u>Thick</u>	<u>Width</u>	<u>Lngth</u>	approx. <u>lbs/ft^2</u>	<u>lbs</u>
Deck	1	5052	0.190	72	144	2.7	194
Sub Total							194
						Pierce	Total Sheet/Plate
							3,856

Response Marine, Inc.
 Dsgn # 563, File: 25' for Mazza
 revised: 12/19/17

EXTRUSION

Boat Qty, Qty mod for Bill Stone's Stock is at right

	<u>QTY</u>	<u>Item</u>	<u>Alloy</u>	<u>Lgth (ft)</u>	<u>lbs/ft</u>	<u>lbs</u>
3		Frame Cutout Flanges	6061 T6	12	.34	12
7		Deck	6061 T6	24	1.14	192
1		Tank	6061 T6	25	.622	16
5		Rub Rail	6061 T6	25	.3	60
2		Misc. & Foredeck & Bhd Stiffs	6061 T6	25	.872	87
1		Roof Stiffs	6061 T6	25	.58	15
1		Step Hatch Gutter	6063	16	.625	10
2		Engine Guard Rail	6063	20	1.26	50
1		Conduit & Tow Post	6061 T6	20	1.788	0
1		Davit	6061 T6	20	2.00	0
1		Davit Socket	6061 T6	20	2.62	0
1		Lower Rub Strake	6061 T6	20	2.62	0
<<This could also cover Davit Socket>>>						
Sub Total						441
TOTAL						4,297

Response Marine, Inc.

NC Cut Parts List
 Dsgn # 563, File: 25' for Mazza
 revised: 12/17/17

Print Date: 12/17/2017

3/16" Parts- 5052 Marine

<u>Part #</u>	<u>Pieces</u>	<u>Description</u>	<u>Bend</u>	<u>Bend Info</u>
C-1	1	Console, Front & Sides	Y	Tight Radius for 5052
C-2	1	Console, Top	Y	Tight Radius for 5052
C-3	1	Console, Back	Y	Tight Radius for 5052
C-4	1	Console, Windshield	Y	Tight Radius for 5052
C-5	1	Console Roof	Y	Tight Radius for 5052
C-6A	1	Console Roof Visor, Fwd		
C-6B	1	Console Roof Visor, Aft		
C-9	2	Console Roof Jigs		
LP-1	1	Leaning Post, Back & Sides	Y	Two, as Marked
LP-2	1	Leaning Post, Front & Top	Y	Bump
LP-3	1	Leaning Post- Vertical Divider		
SL-T	1	Seat Locker Top		
SL-TH	1	Seat Locker Top Lid	Y	Flange B1
ST-P	1	Scupper Tube, Port	Y	Tight Radius for 5052
ST-S	1	Scupper Tube, Stbd	Y	Tight Radius for 5052
T-1	1	Fuel Tank, Body	Y	Tight Radius for 5052
T-2	2	Fuel Tank, Transverse Baffles		
T-3	1	Fuel Tank, Long'l Baffle		
T-4	2	Fuel Tank, Ends		
T-5	1	Fuel Tank, Top		
	23	Sub Total 3/16" 5052		

3/16" Parts- 5086 Marine

<u>Part #</u>	<u>Pieces</u>	<u>Description</u>	<u>Bend</u>	<u>Bend Info</u>
ALB-A	1	Anchor Locker Bottom, Fwd of F1		
ALB-B	1	Anchor Locker Bottom, F1 to F2		
D-AP	1	Deck, F1-F2, Port		
D-AS	1	Deck, F1-F2, Stbd		
D-BE	1	Deck at Engines, FTran to Transom		
D-MP	1	Deck, Margin, F2- Tran, Port		
D-MS	1	Deck, Margin, F2- Tran, Stbd		
DP-5	6	Deck Access Plate, Flush Lid		
DP-5R	6	Deck Access Plate, Ring		
F1	1	Frame 1		
F2	1	Frame 2	Y	Flange B1
F2-P	1	Frame 2, upper, Port	Y	Flange B1
F2-S	1	Frame 2, upper, Stbd	Y	Flange B1
F3	1	Frame 3	Y	Flange B1
F4	1	Frame 4	Y	Flange B1
F4-P	1	Frame 4, upper, Port	Y	Flange B1
F4-S	1	Frame 4, upper, Stbd	Y	Flange B1
F5	1	Frame 5	Y	Flange B1

563 NC Parts

F6	1	Frame 6	Y	Flange B1
F6-P	1	Frame 6, upper, Port	Y	Flange B1
F6-S	1	Frame 6, upper, Stbd	Y	Flange B1
F7	1	Frame 7	Y	Flange B1
F8	1	Frame 8	Y	one, on marks
SD-AP	1	Side Decks, Port Fwd		
SD-AS	1	Side Decks, Stbd Fwd		
SD-BP	1	Side Decks, Port Aft		
SD-BS	1	Side Decks, Stbd Aft		
SDC-P	1	Side Deck Coaming, Port		
SDC-S	1	Side Deck Coaming, Stbd		
SD-T	1	Transom Upper Deck		
STEM	1	Stem Face		
TB	1	Transom Bhd		
TK-P	1	Transom Knee at BS2, Port	Y	Flange B1
TK-S	1	Transom Knee at BS2, Stbd	Y	Flange B1
TS-AP	1	Topsides, Port Fwd		
TS-AS	1	Topsides, Stbd Fwd		
TS-BP	1	Topsides, Port Aft		
TS-BS	1	Topsides, Stbd Aft		
TSL-1BP	1	Topside Shelf/Stringer, F1-F4, Port	Y	Flange B1
TSL-1BS	1	Topside Shelf/Stringer, F1-F4, Stbd	Y	Flange B1
TSL-1CP	1	Topside Shelf/Stringer, F4-Ftran, Port	Y	Flange B1
TSL-1CS	1	Topside Shelf/Stringer, F4-Ftran, Stbd	Y	Flange B1

52 Sub Total 3/16" 5086

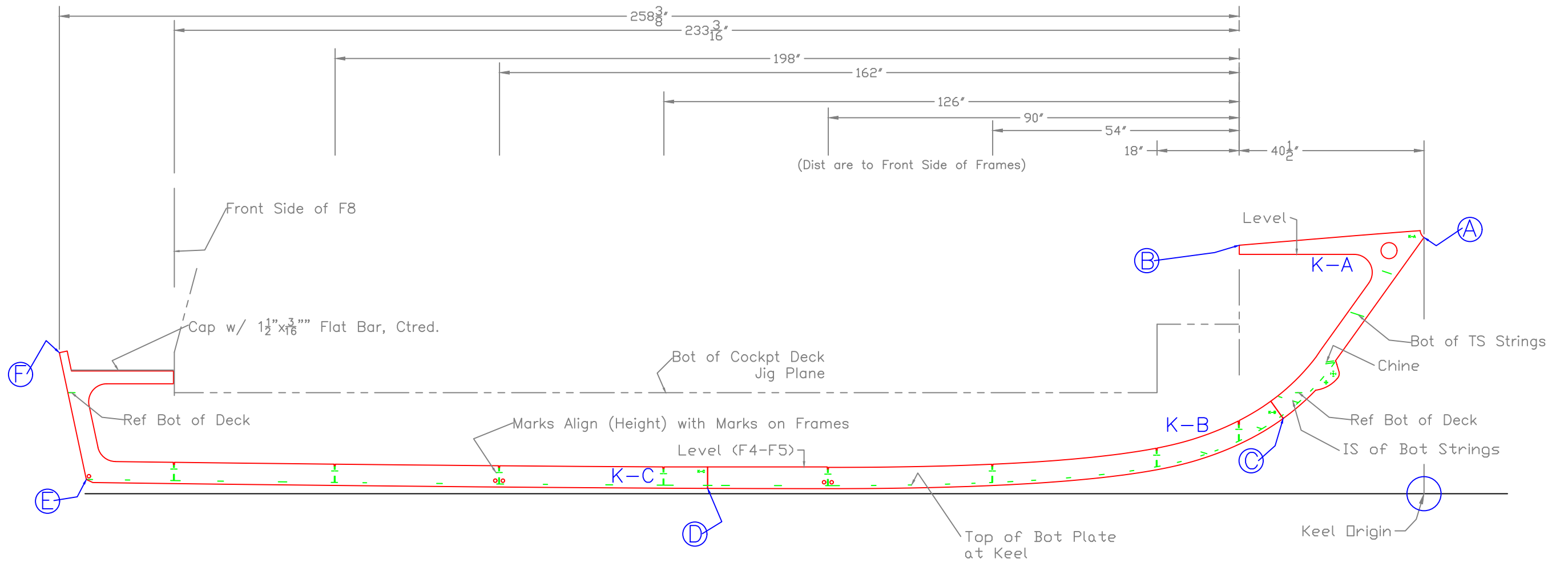
1/4" Parts, 5086 Marine

<u>Part #</u>	<u>Pieces</u>	<u>Description</u>		
B-P	1	Bottom Plate, Port		
B-S	1	Bottom Plate, Stbd		
BS-1P	1	Bottom Longitudinal 1, Port		
BS-1S	1	Bottom Longitudinal 1, Stbd		
BS-2P	1	Bottom Longitudinal 2, Port		
BS-2S	1	Bottom Longitudinal 2, Stbd		
BS-3P	1	Bottom Longitudinal 3, Port		
BS-3S	1	Bottom Longitudinal 3, Stbd		
C-7P	1	Console WS Side aft Flange, Port	Y	
C-7S	1	Console WS Side aft Flange, Stbd	Y	
C-8	1	Console WS Fwd Bot Flange, TRIM LENGTH TO SUIT		
PK-2	2	Push Knee, Doubler at Top Flange		
PK-3	2	Push Knee, Doubler at Bottom Flange		
PK-4	2	Push Knee, Doubler at Pipe		
TP-C	1	Tow Post Cap		
TP-D	1	Tow Post Doubler		
TSL-1AP	1	Topside Stringer, Lower, F2-Stem, Port		
TSL-1AS	1	Topside Stringer, Lower, F2-Stem, Stbd		
TSL-2P	1	Topside Stringer, Upper, F2-Stem, Port		
TSL-2S	1	Topside Stringer, Upper, F2-Stem, Stbd		
TS-TCL-P	1	Topside, Transom Cut Lip, Port		
TS-TCL-S	1	Topside, Transom Cut Lip, Stbd		

25 Sub Total 1/4" 5086

3/8" Parts, 5086 Marine

<u>Part #</u>	<u>Pieces</u>	<u>Description</u>
C-AP	1	Chine, fwd, port
C-AS	1	Chine, fwd, stbd
C-BP	1	Chine, aft, port
C-BS	1	Chine, aft, stbd
K-A	1	Keel, Stem
K-B	1	Keel Mid
K-C	1	Keel, Aft
PK-1	2	Push Knee, Web
PK-5	2	Push Knee, Fwd Flange
PK-6	2	Push Knee, Bottom Flange
PK-7	2	Push Knee, Top Flange
TL-1	1	Transom Lip
TR	1	Transom
	17	Sub Total 3/8" 5086
	117	Total Cut Parts



Response Marine, Inc.
 Dsgn # 563, File: 25' for Mazza
 revised: 12/14/17
 Keel Points

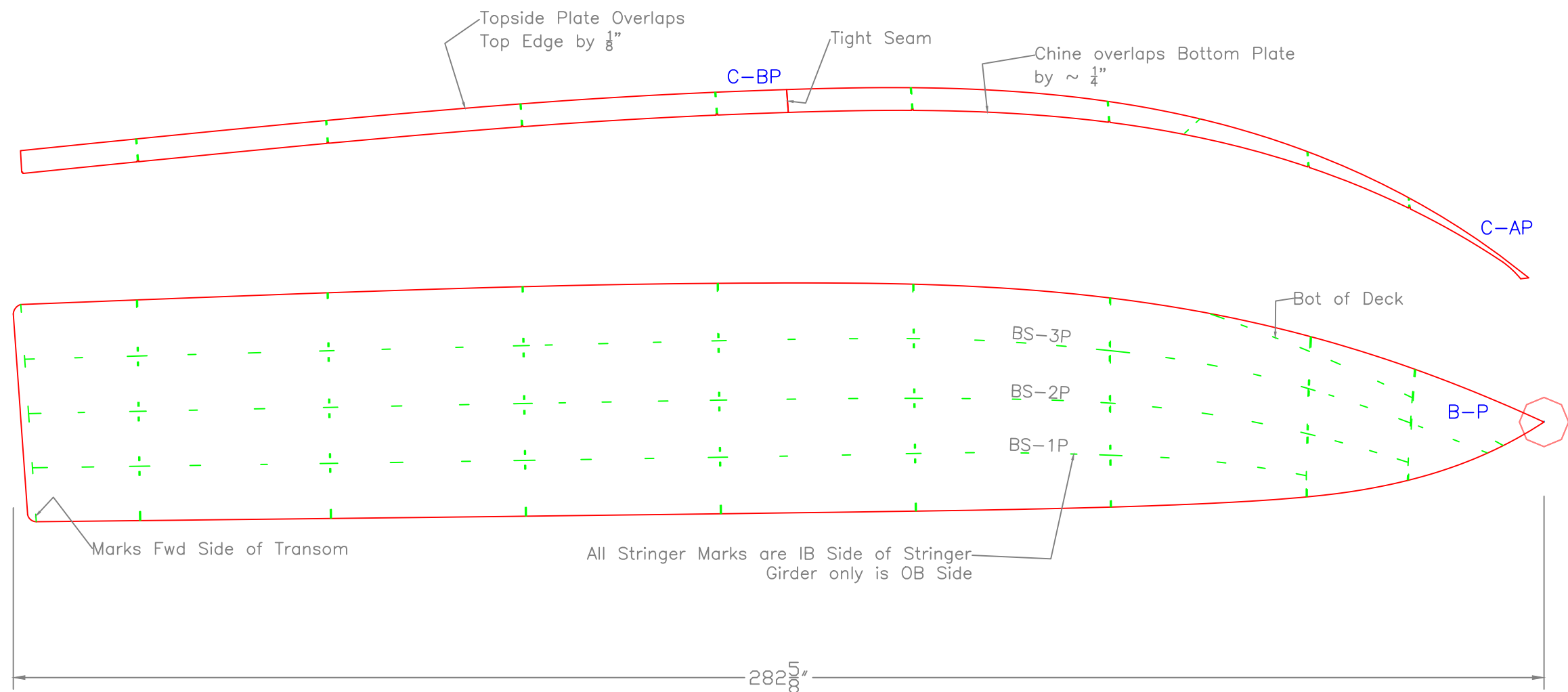
	Inches- sixteenths		Feet	
	Horizontal	Vertical	Horizontal	Vertical
A to Origin	0	50 3/16	0.0000	4.0000
B to Origin				
C to Origin				
D to Origin				
E to Origin				
F to Origin	250 14/16	50 14/16	24.9062	2.9750

ALIGNED (INCHES)

	A	B	C	D	E	F
A to						
B to						
C to						
D to						
E to						
F to						

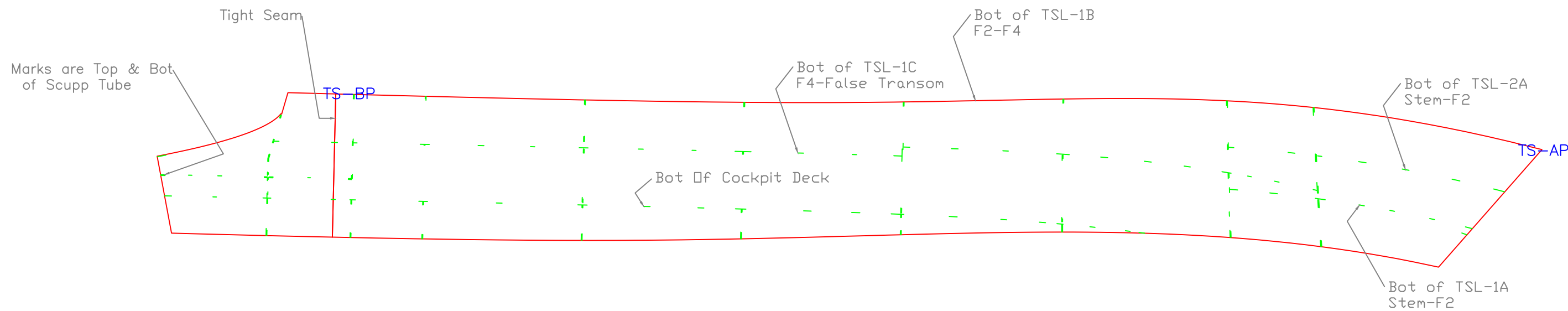
REV. DESCRIPTION

KEEL LAYOUT		
25'x8'3" CC, Pointview		
SCALE 1/2" = 1'	DES/DWN WAL	DATE 12/14/17
Response Marine, Inc. Newburyport, MA, www.responsemarine.com		REV DWG NO. 563-2-1



BOTTOM LAYOUT		
25'x8'3" CC, Pointview		
SCALE 1/2" = 1'	DES/DWN WAL	DATE 12/14/17
Response Marine, Inc. Newburyport, MA, www.responsemarine.com		SHEET DWG NO. 563-2-2

REV.	DESCRIPTION

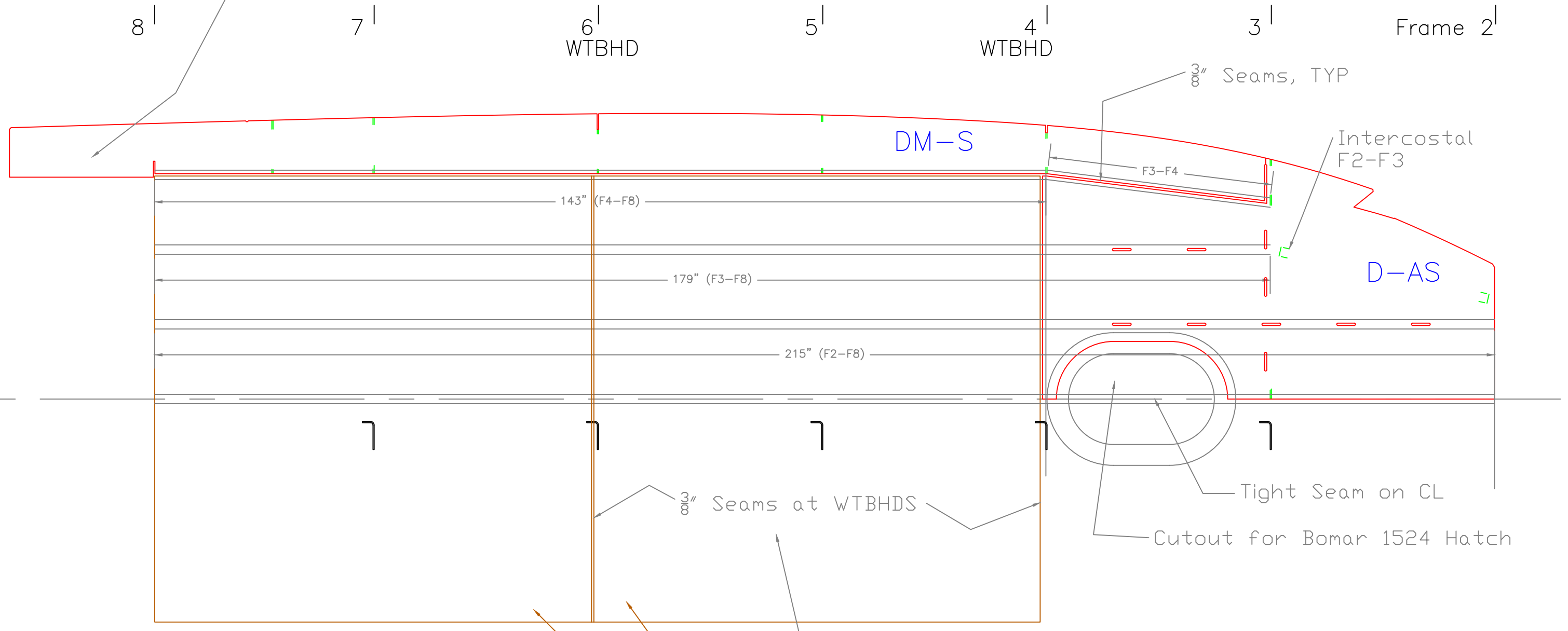


SIDE LAYOUT		
25'x8'3" CC, Pointview		
SCALE 1/2" = 1'	DES/DWN WAL	DATE 12/14/17
Response Marine, Inc. Newburyport, MA, www.responsemarine.com		SHEET DWG NO. 563-2-3

REV.	DESCRIPTION

Deck Margin PL
Runs to Transom
for Scupper Tube
(Stringer ends at F8)

Deck is Viewed From BELOW
Deck Stringers are 1 1/2" x 1 1/2" x 3/16" Sq. Tube



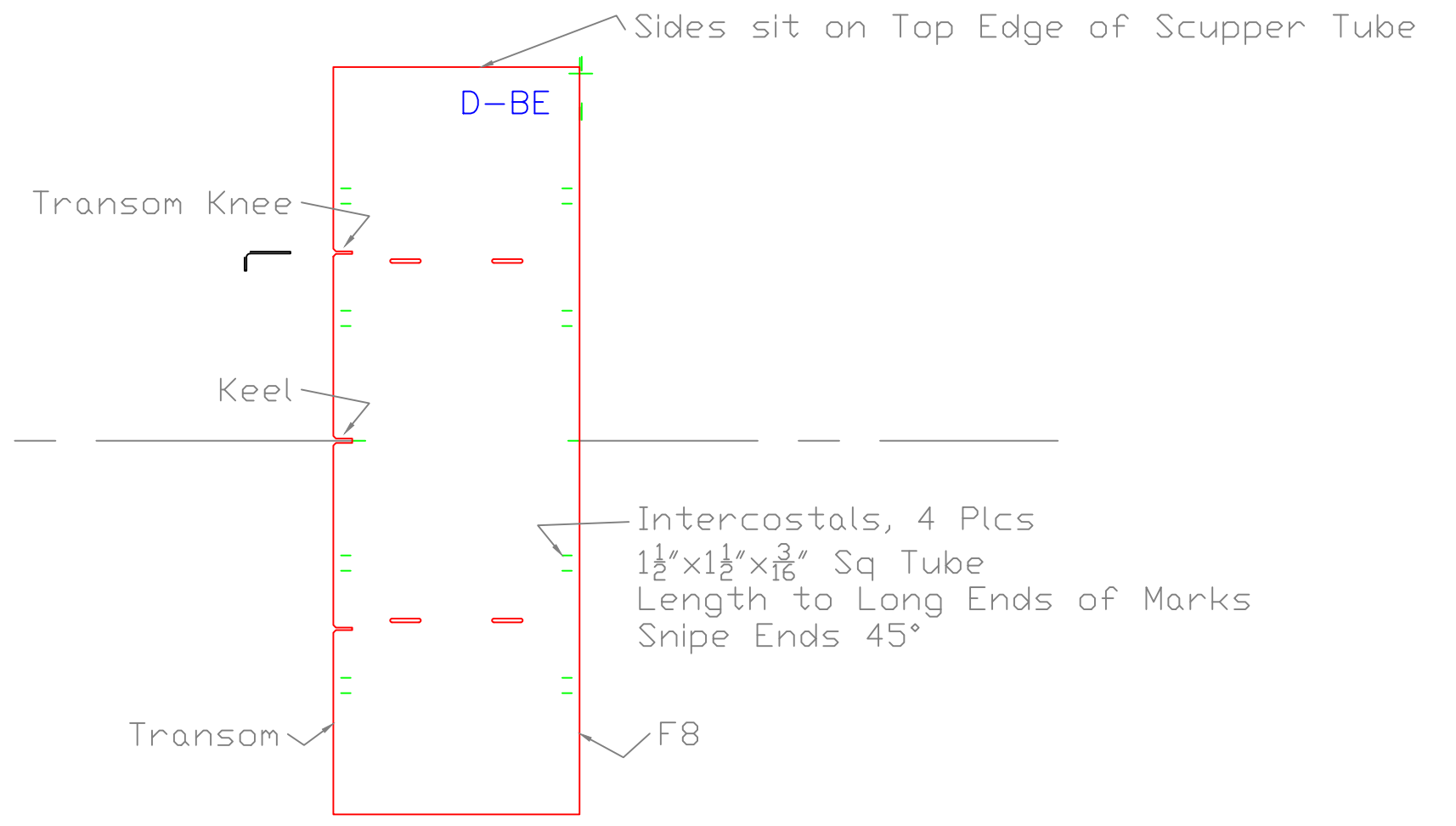
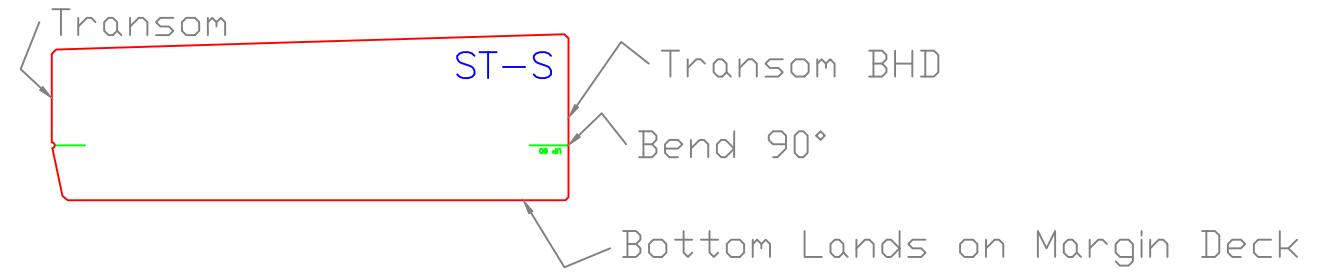
Bodies F4-F8 are Hand Cut
from Single 72x144

Fuel Bay
F4-F6

DP-5 DP-5R
Deck Access Plates, Locate to Suit
6 cut with boat
Ring installs at bottom of deck,
Plate sits Flush with Deck.

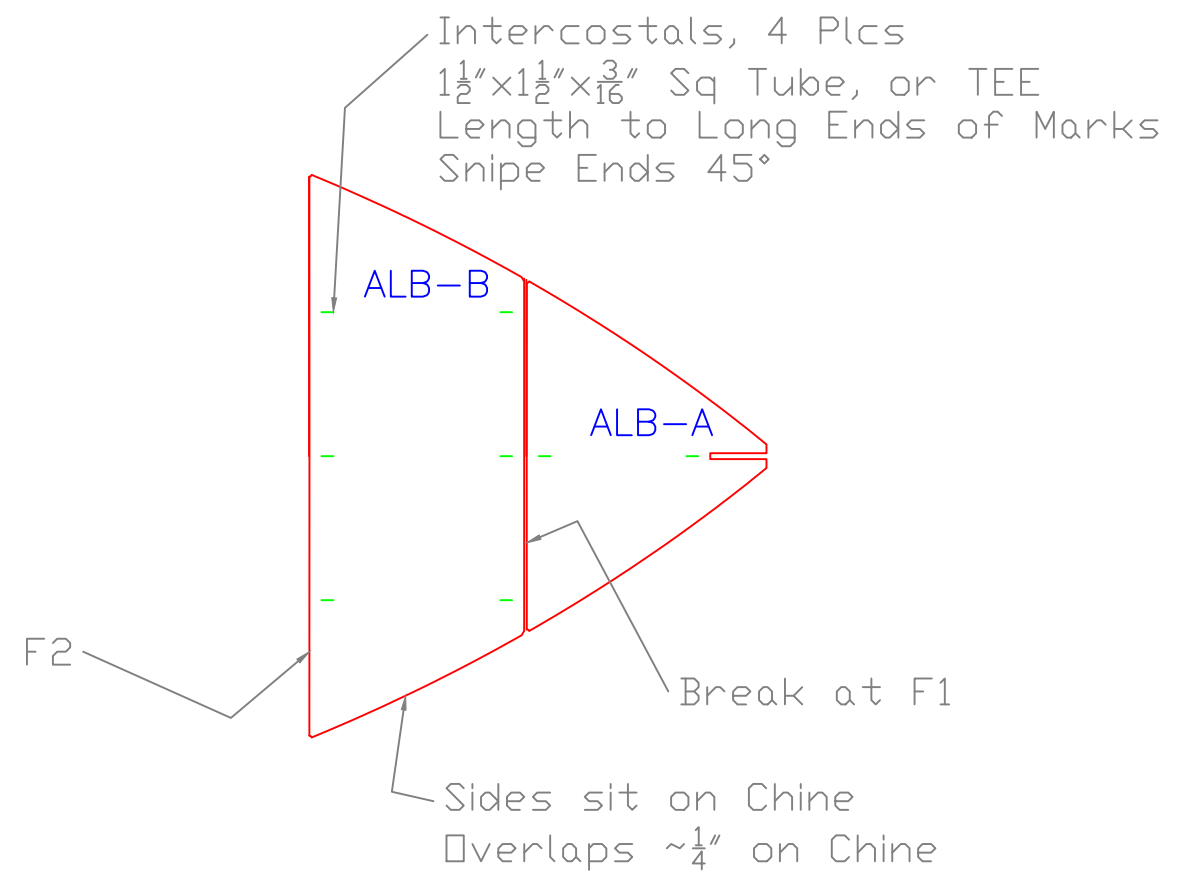
COCKPIT DECK		
25'x8'3" CC, Pointview		
SCALE 3/4" = 1'	DES/DWN WAL	DATE 12/14/17
Response Marine, Inc. Newburyport, MA www.responsemarine.com		REV DWG NO. 563-2-4

REV.	DESCRIPTION



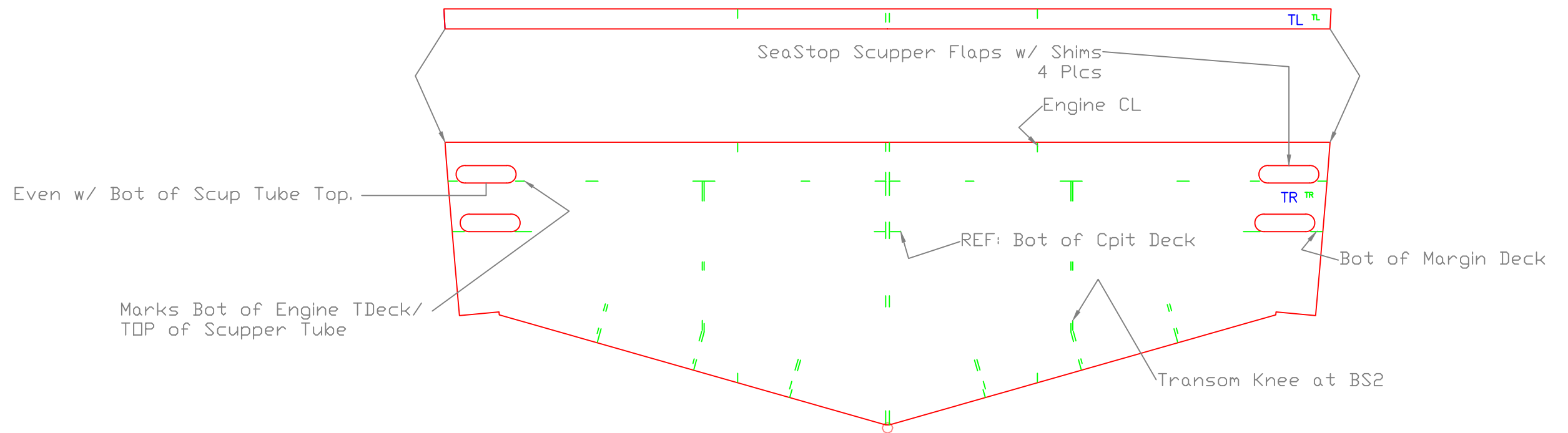
ENGINE DECK & SCUP. TUBES		
25'x8'3" CC, Pointview		
SCALE 3/4" = 1'	DES/DWN WAL	DATE 12/14/17
Response Marine, Inc. Newburyport, MA www.responsemarine.com		REV DWG NO. 563-2-5

REV.	DESCRIPTION



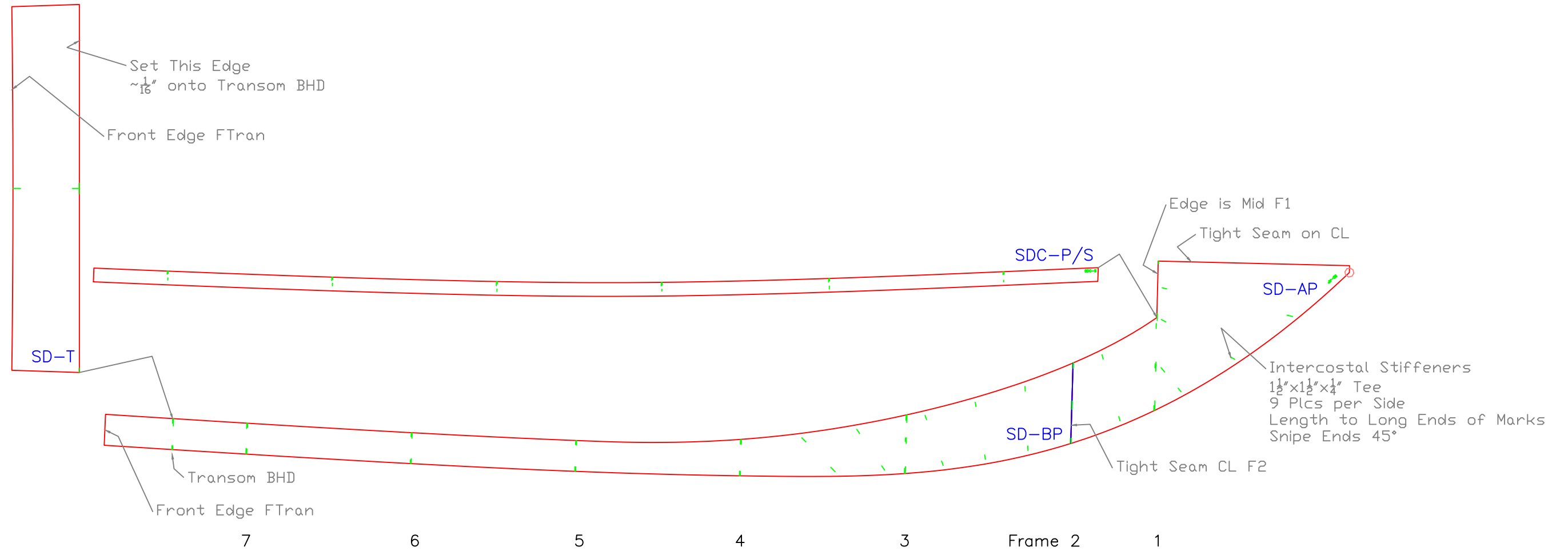
ANCHOR & STEP LKR BOT'S		
25'x8'3" CC, Pointview		
SCALE 3/4" = 1'	DES/DWN WAL	DATE 12/14/17
Response Marine, Inc. Newburyport, MA, www.responsemarine.com		REV DWG NO. 563-2-6

REV.	DESCRIPTION



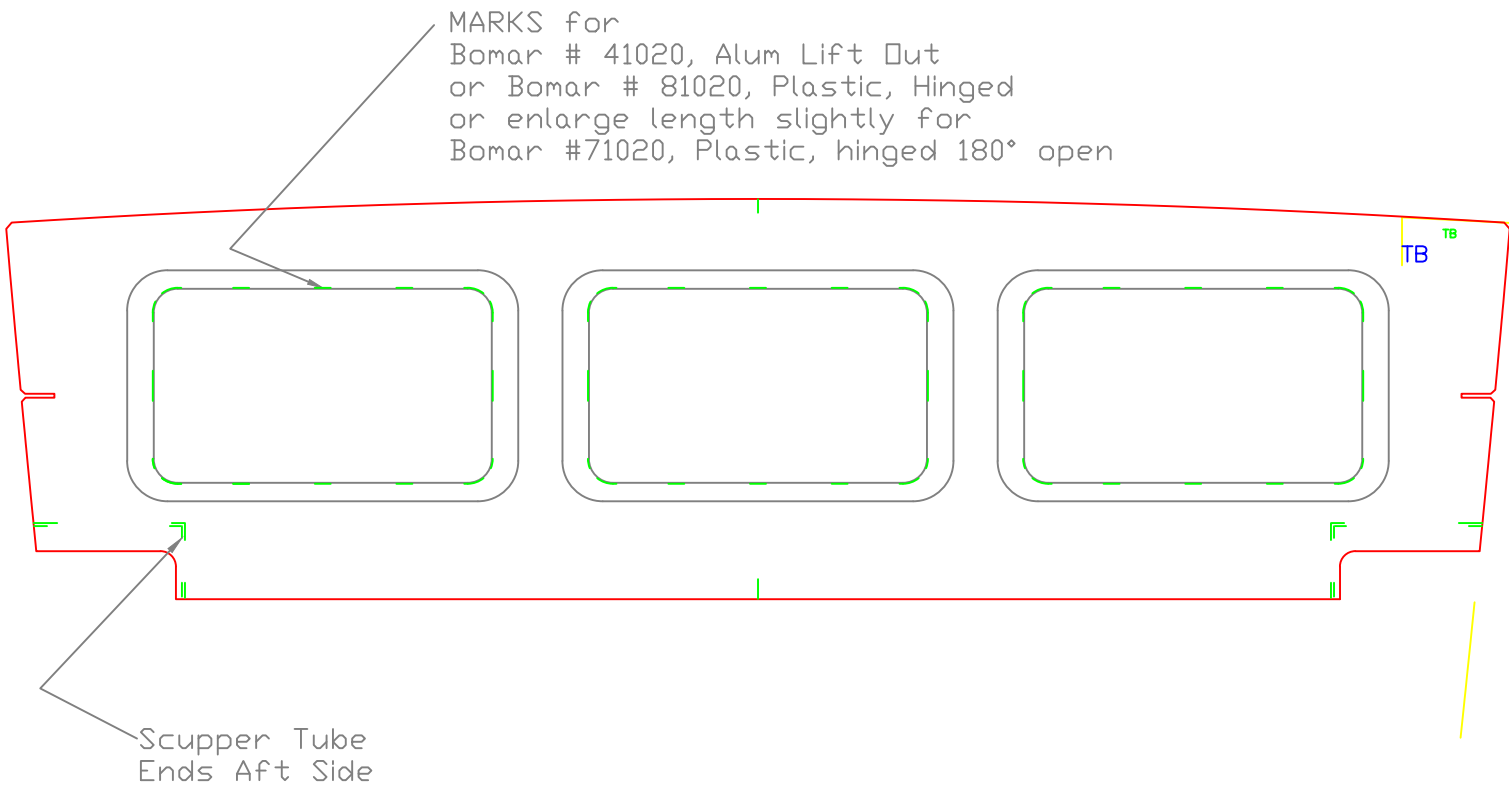
TRANSOM		
25'x8'3" CC, Pointview		
SCALE 1" = 1'	DES/DWN WAL	DATE 12/14/17
Response Marine, Inc. Newburyport, MA www.responsemarine.com		REV DWG NO. 563-2-7

REV.	DESCRIPTION



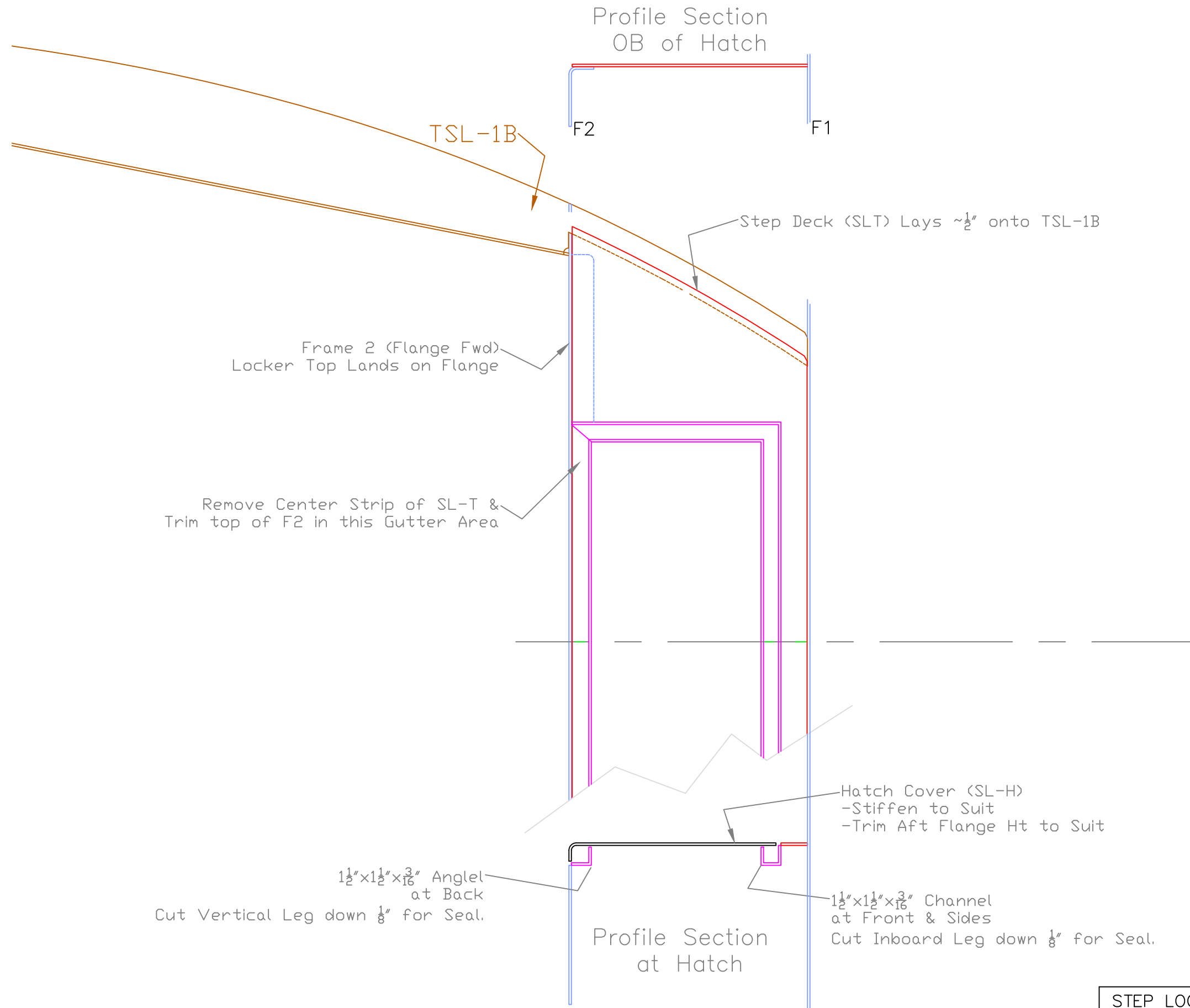
SIDE DECKS		
25'x8'3" CC, Pointview		
SCALE 1/2" = 1'	DES/DWN WAL	DATE 12/14/17
Response Marine, Inc. Newburyport, MA, www.responsemarine.com		REV DWG NO. 563-2-8

REV.	DESCRIPTION



TRANSOM BHD		
25'x8'3" CC, Pointview		
SCALE 1" = 1'	DES/DWN WAL	DATE 12/14/17
Response Marine, Inc. Newburyport, MA www.responsemarine.com		REV DWG NO. 563-2-9

REV.	DESCRIPTION



Frame 2 (Flange Fwd)
Locker Top Lands on Flange

Remove Center Strip of SL-T &
Trim top of F2 in this Gutter Area

Hatch Cover (SL-H)
-Stiffen to Suit
-Trim Aft Flange Ht to Suit

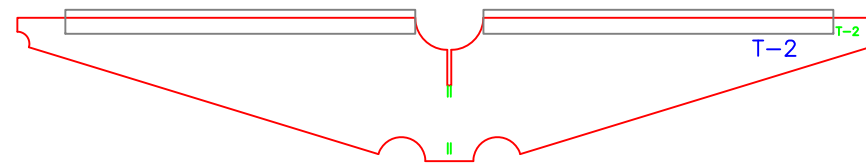
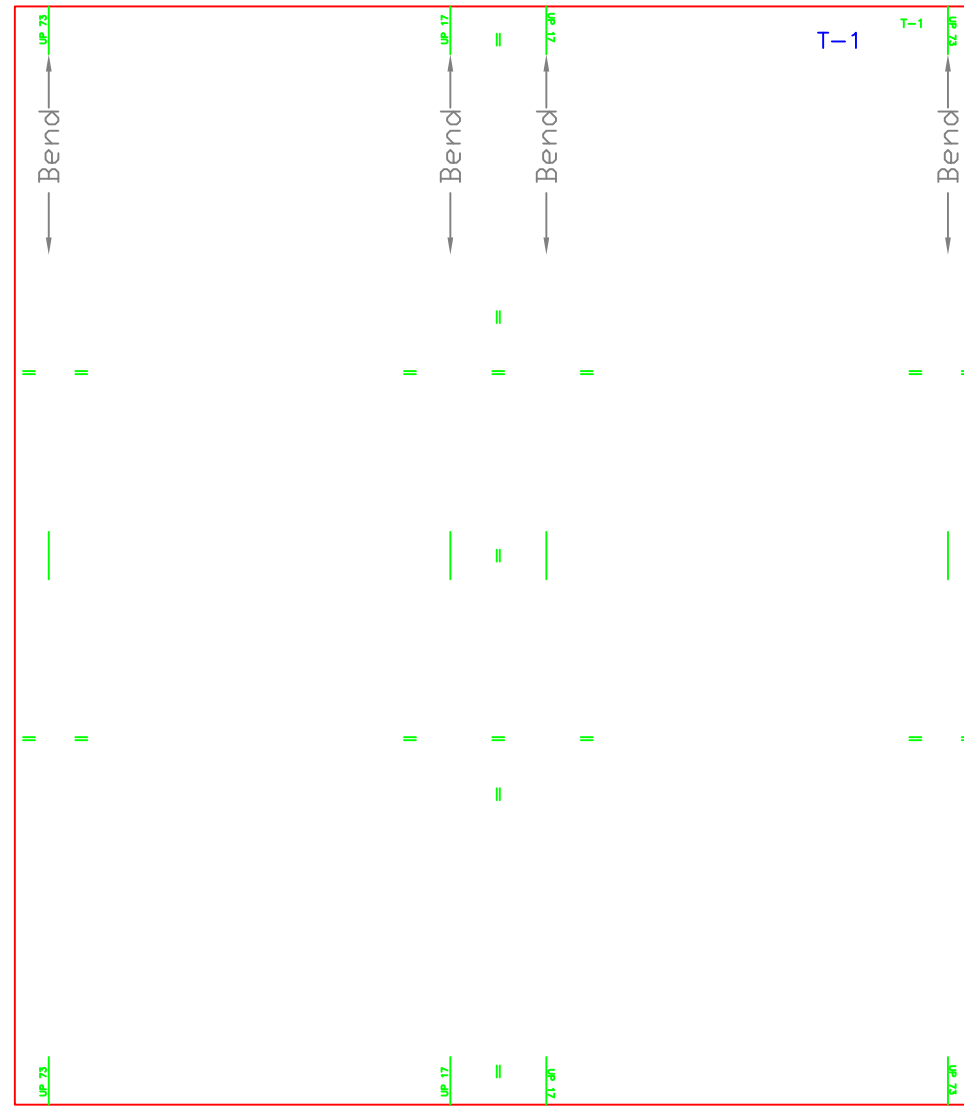
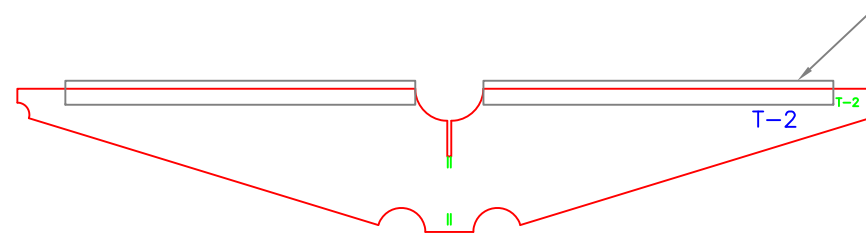
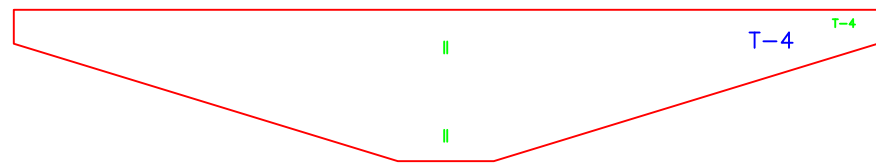
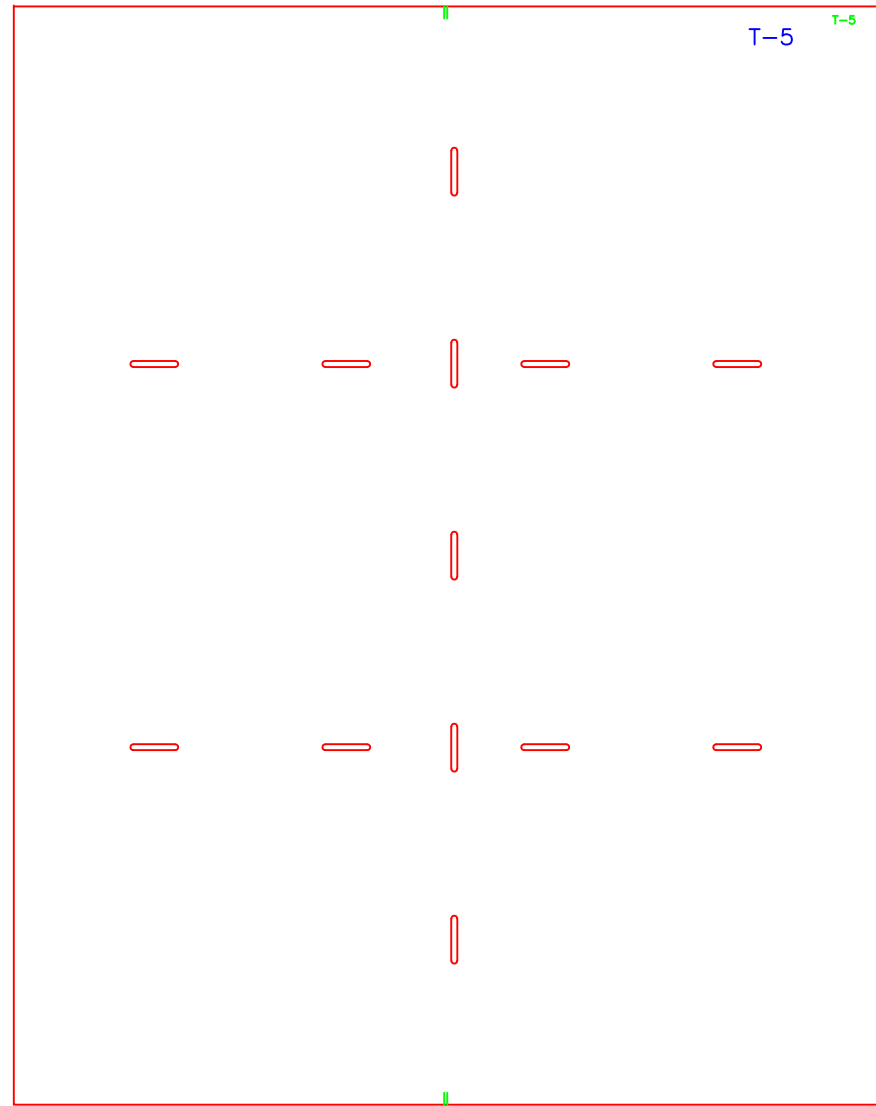
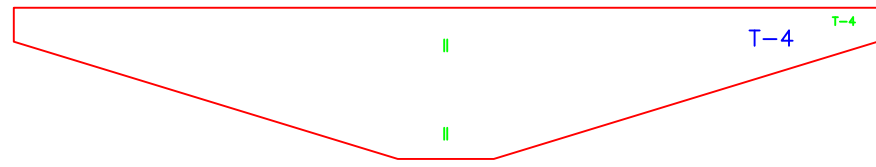
1 1/2" x 1 1/2" x 3/16" Anglet
at Back
Cut Vertical Leg down 1/8" for Seal.

1 1/2" x 1 1/2" x 3/16" Channel
at Front & Sides
Cut Inboard Leg down 1/8" for Seal.

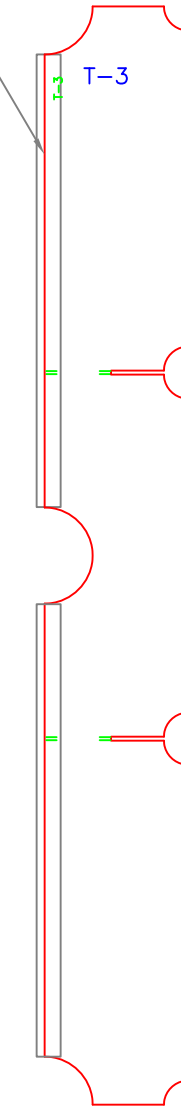
Profile Section
at Hatch

STEP LOCKER		
25'x8'3" CC, Pointview		
SCALE 1 1/2" = 1'	DES/DWN WAL	DATE 12/14/17
REV		DWG NO.
Response Marine, Inc.		563-2-11
Newburyport, MA. www.responsemarine.com		

REV.	DESCRIPTION



Baffles are Down $\frac{1}{2}$ "
for Adding ~1" Angle
Align Angle Flange w/ Plug Welds



FUEL TANK- 100 gal (Gross)

25'x8'3" CC, Pointview

SCALE 1" = 1'	DES/DWN WAL	DATE 12/14/17
------------------	----------------	------------------

REV	REV
-----	-----

Response Marine, Inc.
Newburyport, MA, www.responsemarine.com DWG NO. 563-3-1

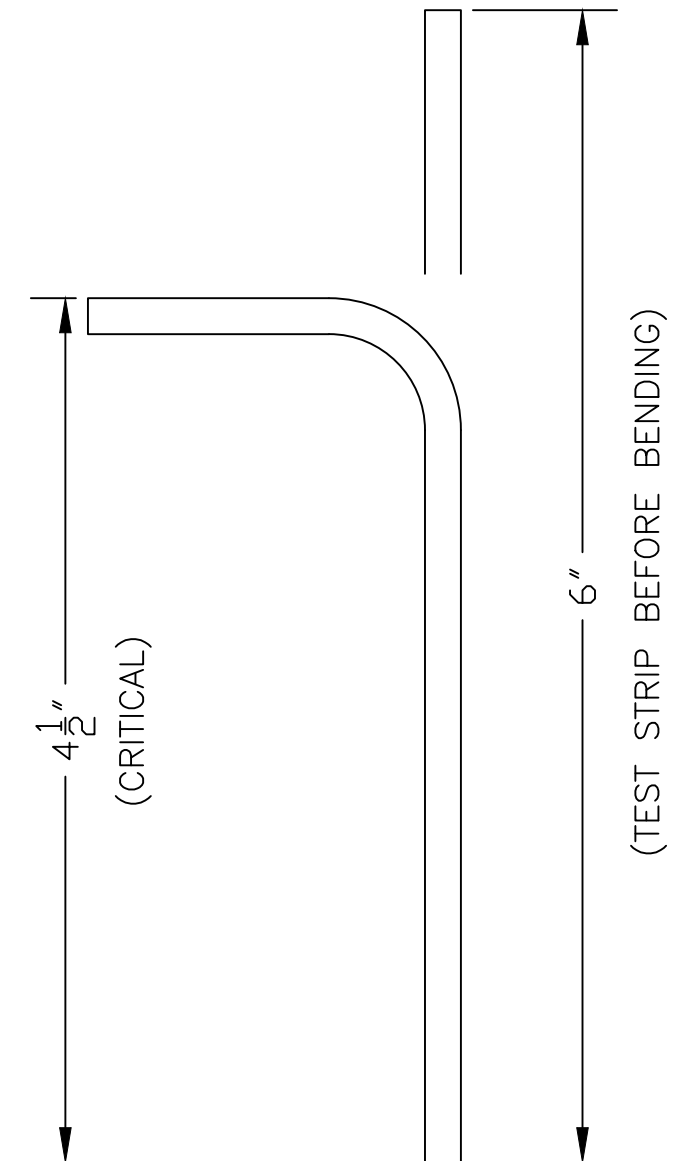
REV. DESCRIPTION

STANDARD FLANGE BENDING: $\frac{3}{16}$ " 5086/83 H116 Stock

- 1) Confirm results for dimensions and cracking with test strips before bending parts.
- 2) Expected Die Radius is $\frac{3}{8}$ " ($\frac{3}{4}$ " diameter). $\frac{1}{2}$ " Radius is OK as well.
- 3) Flanges are designed for outside major flange length of $1\frac{1}{2}$ " less than flat stock length as shown.
- 4) Expected Back Gauge setting is 1.68", but confirm and adjust, based on test strip.

Parts to be flanged per this same set-up are listed at left.

<u>Part</u>	<u>QTY</u>	<u>Description</u>
F2	1	Frame 2
F2-P	1	Frame 2, upper, Port
F2-S	1	Frame 2, upper, Stbd
F3	1	Frame 3
F4	1	Frame 4
F4-P	1	Frame 4, upper, Port
F4-S	1	Frame 4, upper, Stbd
F5	1	Frame 5
F6	1	Frame 6
F6-P	1	Frame 6, upper, Port
F6-S	1	Frame 6, upper, Stbd
F7	1	Frame 7
SL-TH	1	Seat Locker Top Lid ← This Part Only is 5052 H32
TK-P	1	Transom Knee at BS2, Port
TK-S	1	Transom Knee at BS2, Stbd
TSL-1BP	1	Topside Shelf/Stringer, F1-F4, Port
TSL-1BS	1	Topside Shelf/Stringer, F1-F4, Stbd
TSL-1CP	1	Topside Shelf/Stringer, F4-Ftran, Port
TSL-1CS	1	Topside Shelf/Stringer, F4-Ftran, Stbd
19		Total

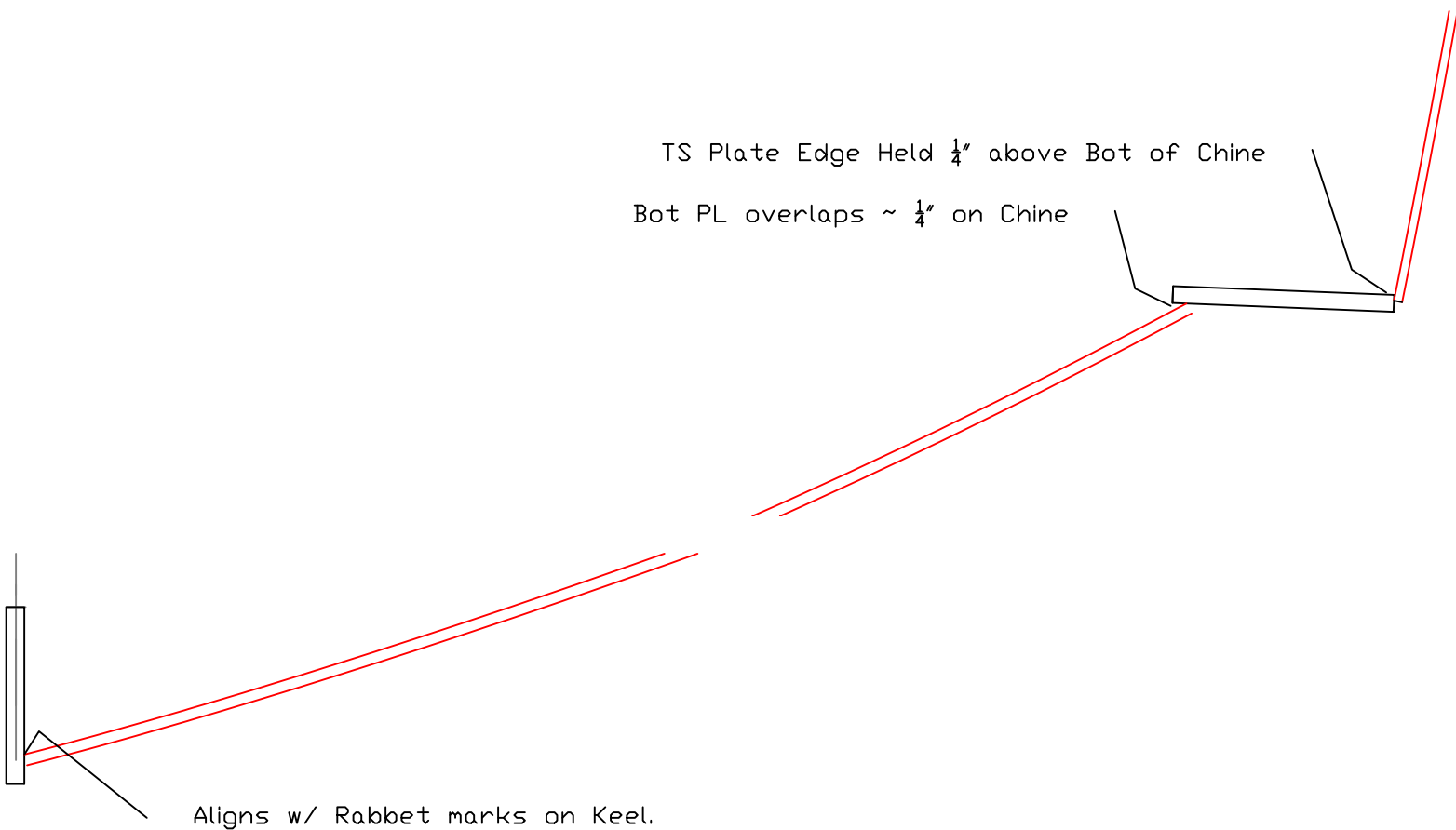


FLANGE "B1" DETAILS		
25'x8'3" CC, Pointview		
SCALE NONE	DES/DWN WAL	DATE 12/14/17
SHEET		DWG. NO. 563-B-1

REV.	DESCRIPTION

Response Marine, Inc.
Newburyport, MA, www.responsemarine.com

TS Plate Edge Held $\frac{1}{4}$ " above Bot of Chine
 Bot PL overlaps $\sim \frac{1}{4}$ " on Chine

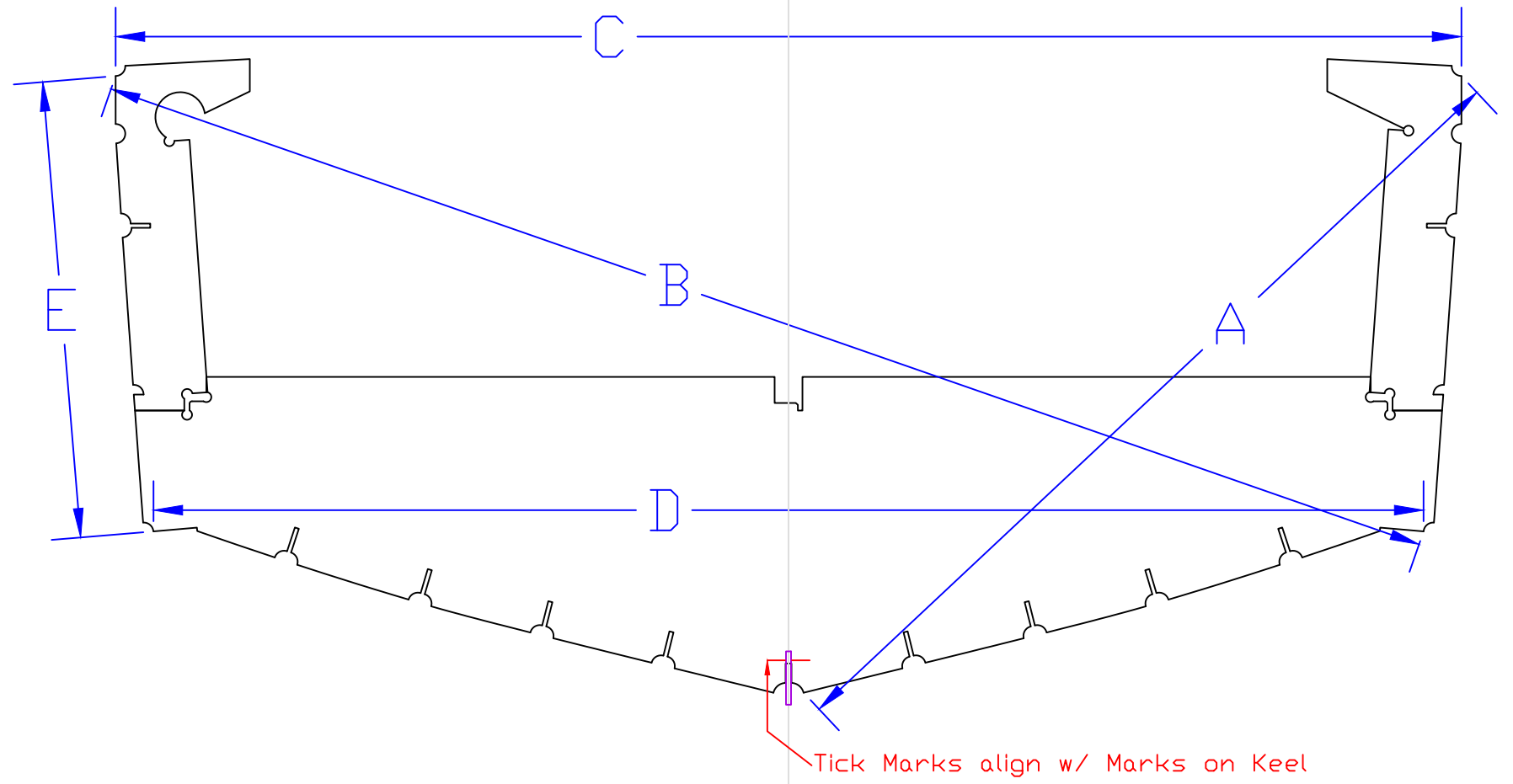


Aligns w/ Rabbet marks on Keel.

Drawings & NC Parts Files are provided to authorized builder for construction of one boat only.
 Use of drawings & files for purposes other than constructing this boat is prohibited
 without the pre-payment of additional fees to Response Marine, Inc.

REV.	DESCRIPTION

TYPICAL BOTTOM JOINTS		
25'x8'3" CC, Pointview		
SCALE 3" = 1'	DES/DWN WAL	DATE 12/14/17
Response Marine, Inc.		SHEET
Newburyport, MA, www.responsemarine.com		DWG NO. 563-C-1



Response Marine, Inc.
 Dsgn # 563, File: 25' for Mazza
 revised: 12/14/17
 FRAME DIMENSIONS

Inches- sixteenths				
A	B	C	D	E

F2
 F4
 F6



Millimeters				
A	B	C	D	E

F2
 F4
 F6



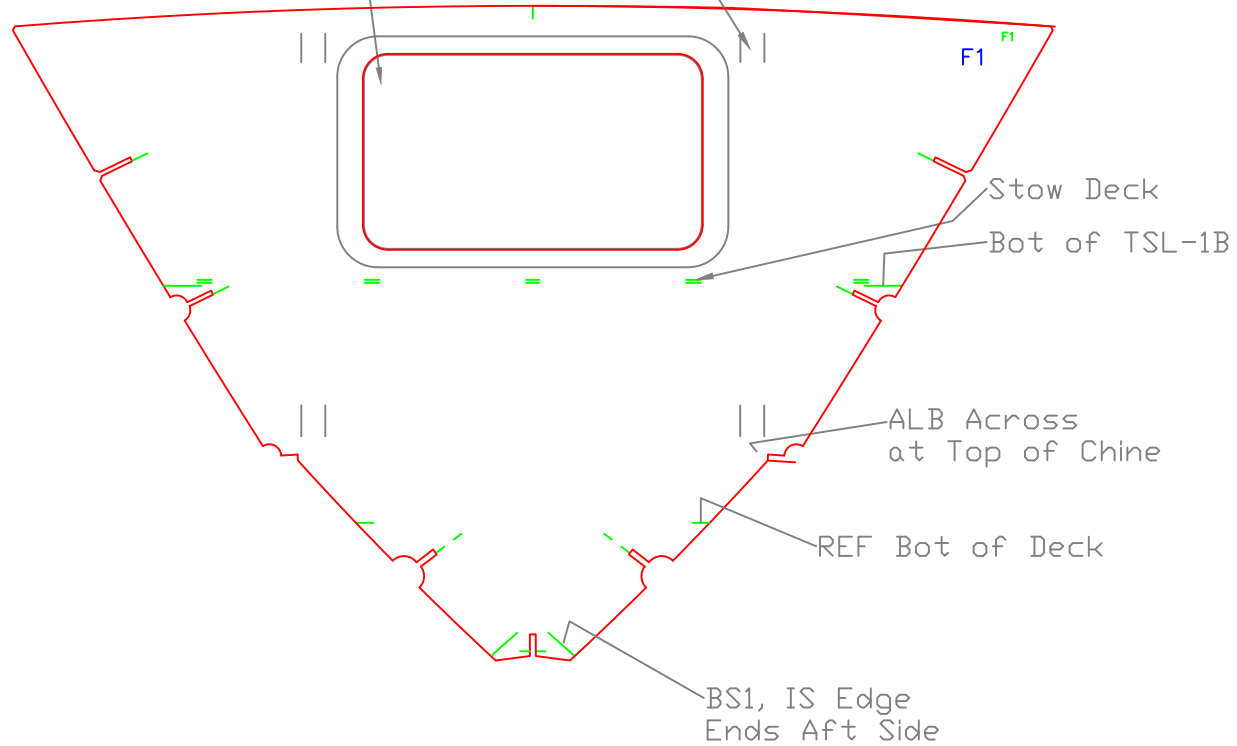
REV.	DESCRIPTION
------	-------------

FRAME DIMENSIONS		
25'x8'3" CC, Pointview		
SCALE NONE	DES/DWN WAL	DATE 12/14/17
Response Marine, Inc.		SHEET
Newburyport, MA, www.responsemarine.com		DWG. NO. 563-F-R

Cutout for
 Bomar # 41020, Alum Lift Out
 or Bomar # 81020, Plastic, Hinged
 or enlarge length slightly for
 Bomar #71020, Plastic, hinged 180° open

Install w/ Marks Aft

Stiff FWD Side w/ 1½"x⅛" Sq. Tube,
 Or Similar
 2 Verticals
 Snipe Top & Bottom 45°

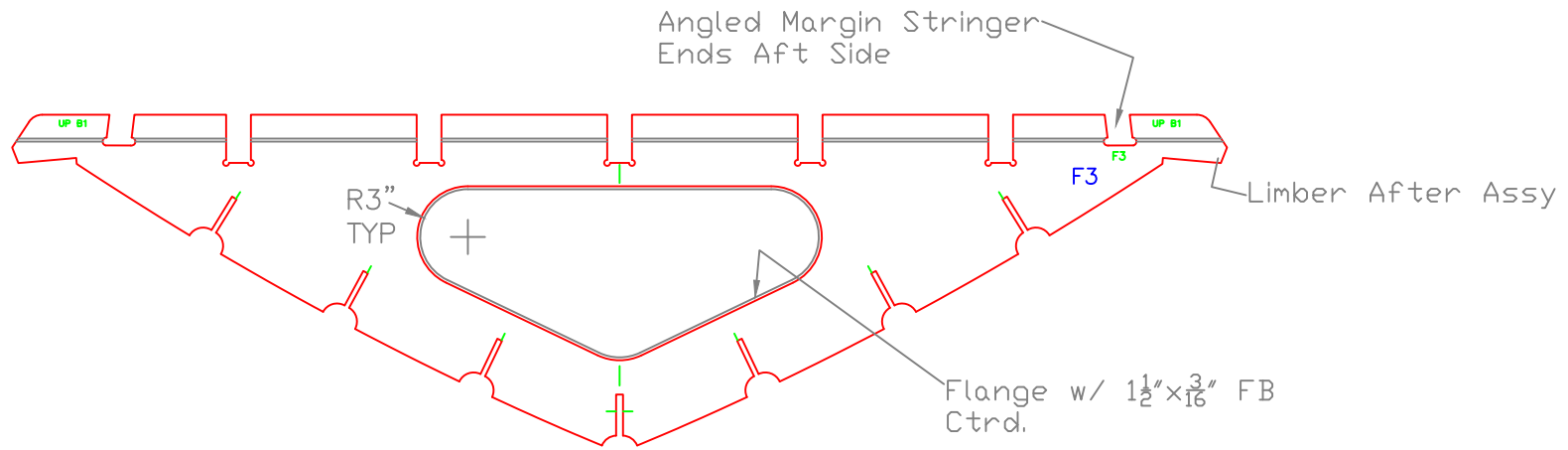


FRAME 1		
25'x8'3" CC, Pointview		
SCALE 1" = 1'	DES/DWN WAL	DATE 12/14/17
Response Marine, Inc.		SHEET
Newburyport, MA, www.responsemarine.com		DWG NO. 563-F1

Drawings & NC Parts Files are provided to authorized builder for construction of one boat only.
 Use of drawings & files for purposes other than constructing this boat is prohibited
 without the pre-payment of additional fees to Response Marine, Inc.

REV.	DESCRIPTION

Install Body w/ Marks & Flange Aft
 Flange Shown Before Bending



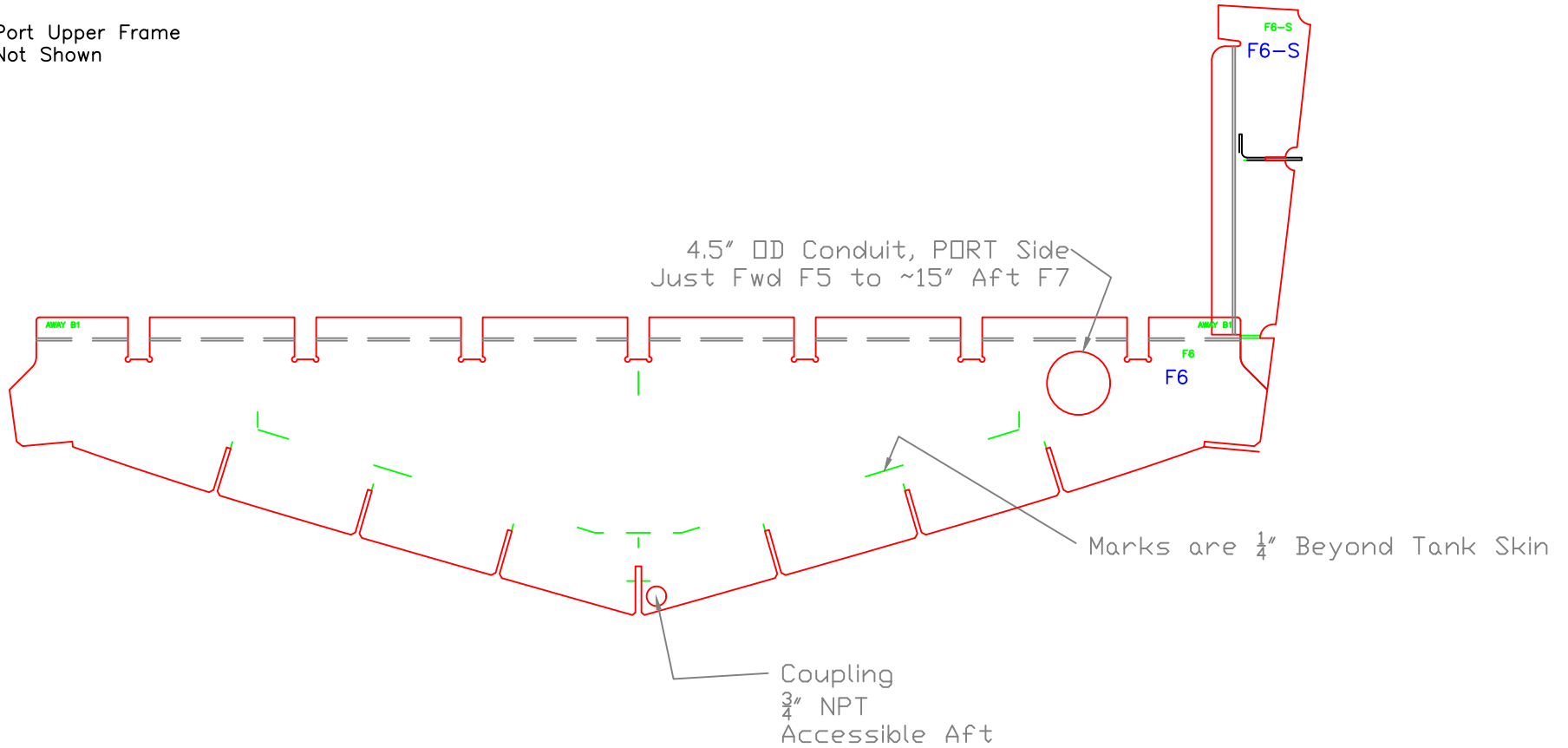
Drawings & NC Parts Files are provided to authorized builder for construction of one boat only. Use of drawings & files for purposes other than constructing this boat is prohibited without the pre-payment of additional fees to Response Marine, Inc.

REV.	DESCRIPTION

FRAME 3		
25'x8'3" CC, Pointview		
SCALE 1" = 1'	DES/DWN WAL	DATE 12/14/17
Response Marine, Inc.		SHEET
Newburyport, MA, www.responsemarine.com		DWG NO. 563-F3

Install Body w/ Marks Fwd, Flange Aft
 Install Tops w/ Marks Aft, Flange Aft
 Flanges Shown Before Bending

Port Upper Frame
 Not Shown



Drawings & NC Parts Files are provided to authorized builder for construction of one boat only.
 Use of drawings & files for purposes other than constructing this boat is prohibited
 without the pre-payment of additional fees to Response Marine, Inc.

REV.	DESCRIPTION

FRAME 6, WTBHD		
25'x8'3" CC, Pointview		
SCALE 1" = 1'	DES/DWN WAL	DATE 12/14/17
Response Marine, Inc.		SHEET
Newburyport, MA, www.responsemarine.com		DWG NO. 563-F6