

DRAWING LIST

Delivered	Design	Dwg	Description	Date
Krecak, Bob-	#317-2896			
	317	P1	PRELIM Profile	6/20/08
		P2	PRELIM Plan	6/20/08
		P3	PRELIM Bow Views	7/9/08
		P4	PRELIM Sections @ F3 & F2	7/9/08
		P5	PRELIM Cabin Layout	7/11/08
		P6	PRELIM House Section at Dash BHD	9/11/08
		P7	PRELIM Profile & Plan - Alt Flybridge	9/17/08
		P8	PRELIM House Section at F5	9/17/08
		-01	Outboard Profile & Flybridge Plan	9/28/08
		-02	Plan View	9/28/08
		-03	Inboard Profile	9/28/08
		-2-1	Keel Layout	9/24/08
		-2-2	Bottom & Chine Layout	9/26/08
		-2-3	Bottom Stringers	9/27/08
		-2-4	Side Plate Layout	9/26/08
		-2-5	Topside Stringers	9/27/08
		-2-6	Cockpit Deck	9/26/08
		-2-7	Side/Fore Deck Layout	9/26/08
		-2-8	Cabin Bulkheads	9/26/08
		-3-1	Fuel Tank- 200 Gal	9/23/08
		-3-2	Engne Bracket	9/23/08
		-4-1	Pilothouse Typ. Section	9/27/08
		-4-2	Pilothouse Assy	9/28/08
		-4-3	Roof Assembly	9/26/08
		-4-4	Flybridge Assembly	9/23/08
		-7-1	Cabin Furring Strips	9/27/08
		-F-R	Frame Dimensions	9/26/08
		-F-T	Transom	9/27/08
		-F-1	Frame 1	9/24/08
		-F-2	Frame 2	9/24/08
		-F-3	Frame 3	9/24/08
		-F-4	Frame 4	9/24/08
		-F-5	Frame 5	9/24/08
		-F-6	Frame 6	9/24/08
		-F-7	Frame 7	9/24/08
		-F-8	Frame 8	9/24/08
		-B-1	Bending- Cockpit Shelves	9/27/08
	303	-B-3	Bending- Fish Well Liner	1/8/08
	303	-B-6	Bending- Batt. Compartment	1/8/08

Note: Items in bold require bending

1/8" PARTS for Flybridge

FB-F0	1 Frame Fwd CL	2- 2
FB-F1	2 Frame 1	2- 2
FB-F2	2 Frame 2	2- 2
FB-F3	2 Frame 3	2- 2
FB-F4	2 Frame 5	2- 2 & 3
FBS-P	1 Skin, Port	2- 2
FBS-S	1 Skin, Stbd	2- 3
FB-TC	2 Top Coaming	2- 2 & 3
FB-AC	2 Aft Coaming	2- 3
FB-TCL	2 Top Coaming Lip	2- 2
FB-ACL	2 Aft Coaming Lip	2- 2 & 3
FB-WS	2 Windscreen	2- 1
FB-S	2 Stringer	2- 3

23 Sub Total

3/16" PARTS for Pilothouse & Cuddy:

CF	1 Cabin Front	H3- 6
CS-S	1 Cabin Side, Stbd	H3- 8
CS-P	1 Cabin Side, Port	H3- 9
CT	1 Cabin (Cuddy) Top	H3- 4
DB	1 Dash Bulkhead	H3- 3
J-CF	1 Jig, Cabin Front	H3- 5
J-PHR	2 Jig, Pilothouse Roof	H3- 2 & 3
J-C1	1 Jig, Cuddy top CL	H3- 7
J-CF2	1 Jig, Cuddy at Hull Frame 2	H3- 7
PHB-TS	2 Pilothouse BHD at Topsides	H3- 4
PHB	2 Pilothouse Bulkhead	H3- 1 & 2
PHK	2 Pilothouse Knuckle	H3- 7
PHR-P	1 Pilothouse Roof, Port	H3- 6
PHR-S	1 Pilothouse Roof, Stbd	H3- 7
PHS	2 Pilothouse Sides	H3- 8 & 9
VA	1 Visor Aft	H3- 6
VP	1 Visor, Forward & Sides, Port	H3- 7
VS	1 Visor, Forward & Sides, Stbd	H3- 6
VJ-0	1 Visor Jig, Fwd CL	H3- 6
VJ-1	2 Visor Jig, Fwd 12"	H3- 6
WS	1 Windshield	H3- 5

Bending

On Marks

27

3/16" PARTS:

ALB	1 Anchor Locker	3- 7
BF	1 Bench Flat, F1-F2	3- 1
BC-A	1 Battery Compartment	3- 4
BS-2B	2 Bottom Stringer 2, aft (Girder)	3- 2 & 3
D-A	2 Deck, Outboard Section	3- 9
DM-P	1 Deck, Margin Port	3- 9
DM-S	1 Deck, Margin Stbd	3- 9
F1	1 Frame 1	3- 1
F2	1 Frame 2, Lower	3- 1
F3	1 Frame 3	3- 1
F4	1 Frame 4, Lower	3- 1
F4-U	2 Frame 4, Upper	3- 7 & 8
F5	1 Frame 5, Lower	3- 8
F5-U	2 Frame 5, Upper	3- 7 & 8
F6	1 Frame 6, Lower	3- 7
F7	1 Frame 7, Lower	3- 8

Bending

On Marks, Dwg # 303-B-6

F7-U	2	Frame 7, Upper	3- 7	
F8	1	Frame 8, Lower	3- 7	
F8-U	2	Frame 8, Upper	3- 8	
FDC	1	Coaming, Foredeck at Sheer	3- 3	
FDS	1	Foredeck at Sheer	3- 7	
FS-1	2	Furring Strip, Low	3- 4	
FS-2	2	Furring Strip, Mid	3- 4	
FS-3	2	Furring Strip, High	3- 3 & 4	
J-SDA	1	Jig, Foredeck (for parts SD-A)	3- 1	
OB-0	1	Outboard Bracket, CL Stiffener	3- 6	
OB-1	2	Outboard Bracket, Stiffener	3- 2 & 3	
OB-D	1	Outboard Bracket, Deck	3- 8	
OB-S	2	Outboard Bracket, Side	3- 2 & 3	
OB-T	1	Outboard Bracket, Back	3- 6	
SD-A	2	Side Decks Fwd	3- 7 & 8	
SD-BP	1	Side Deck Mid, Port	3- 4	
SD-BS	1	Side Deck Mid, Stbd	3- 5	
CS-CP	1	Side Deck Aft, Port	3- 4	
SD-CS	1	Side Deck Aft, Stbd	3- 5	
SDC-P	1	Side Deck Coaming, Port	3- 5	
SDC-S	1	Side Deck Coaming, Stbd	3- 5	
S-FC	1	Sole, Fwd Cabin	3- 5	
T-A	1	Tank Body	3- 6	On Marks, Dwg # 317-3-1
T-B	3	Tank Baffle	3- 6	
T-C	2	Tank End	3- 6	
T-D	1	Tank Top	3- 6	
TR	1	Transom	3- 7	On Marks, Dwg # 317-F-T
TRD	1	Transom Deck	3- 8	
TRDC	1	Transom Deck Coaming	3- 8	
TS-AP	1	Topsides, Fwd Port	3- 2	
TS-AS	1	Topsides, Fwd Stbd	3- 2	
TS-BP	1	Topsides, Aft Port	3- 4	
TS-BS	1	Topsides, Aft Stbd	3- 5	
TSL-B	2	Topside Stringer, Mid	3- 8	
TSL-C	2	Topside Stringer/Shelf	3- 4 & 5	On Marks, Dwg # 317-2-5
	68	Total Pieces (3/16")		

1/4" Parts

<u>Part #</u>	<u>Pieces</u>	<u>Description</u>	<u>Stock</u>
B-AP	1	Bottom Plate, Fwd Port	4- 5
B-AS	1	Bottom Plate, Fwd Stbd	4- 5
B-BP	1	Bottom Plate, Aft Port	4- 2
B-BS	1	Bottom , Aft Stbd	4- 3
BS-1A	2	Bottom Stringer #1, fwd	4- 1
BS-1B	2	Bottom Stringer #1, aft	4- 4 & 5
BS-2A	2	Bottom Stringer #2, fwd	4- 1
BS-3A	2	Bottom Stringer #3, fwd	4- 1
BS-3B	2	Bottom Stringer #3, aft	4- 4
C-AP	1	Chine, Fwd Port	4- 3
C-AS	1	Chine, Fwd Stbd	4- 2
C-BP	1	Chine, Aft Port	4- 4
C-BS	1	Chine, Aft Stbd	4- 4
K-A	1	Keel Fwd	4- 5
K-B	1	Keel Mid	4- 5
K-C	1	Keel Aft	4- 3
K-D	1	Keel at Transom	4- 5
TSL-A	2	Topside Stringer, fwd	4- 1
	24	Total Pieces	
	142	Total Cut Parts	

Response Marine, Inc.
 Aluminum Stock for Krecak 2896 w/ 10' House
 File: RMIDes\Norvelle 2896

Revised: 10/5/08
 Print Date: 10/6/08

SHEET/PLATE

Note All 5086 stock to be Marine per ASTM B928
Equivalent 5083 may be substituted

	<u>QTY</u>	<u>Description</u>	<u>Thick</u>	<u>Width</u>	<u>Lngh</u>	<u>lbs/ft^2</u>	<u>lbs</u>	
	For NC Cutting:							
Fly Br.	1	1/8' Sheet, 5086 H116	0.125	60	96	1.800	72	
Fly Br.	2	1/8' Sheet, 5086 H116	0.125	60	144	1.800	216	
House	5	3/16" Sheet, 5806 H116	0.190	48	96	2.700	432	
House	4	3/16" Sheet, 5806 H116	0.190	60	240	2.700	1,080	
Hull	6	3/16" Sheet, 5806 H116	0.190	72	240	2.700	1,944	
	3	3/16" Sheet, 5806 H116	0.190	60	240	2.700	810	
	1	1/4" Plate, 5086 H116	0.250	48	120	3.600	144	
	2	1/4" Plate, 5086 H116	0.250	72	144	3.600	518	
	1	1/4" Plate, 5086 H116	0.250	36	240	3.600	216	
	2	1/4" Plate, 5086 H116	0.250	60	240	3.600	720	
Deck	Blank Stock							
	2	3/16" Sheet- 5052 H32	0.190	48	144	2.700	259	
	2						Total Sheet/Plate	6,412

EXTRUSION

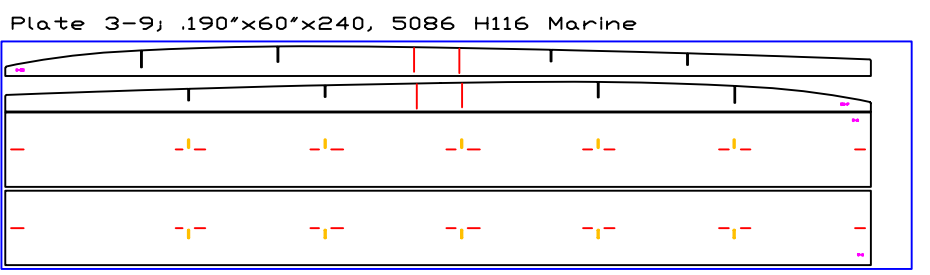
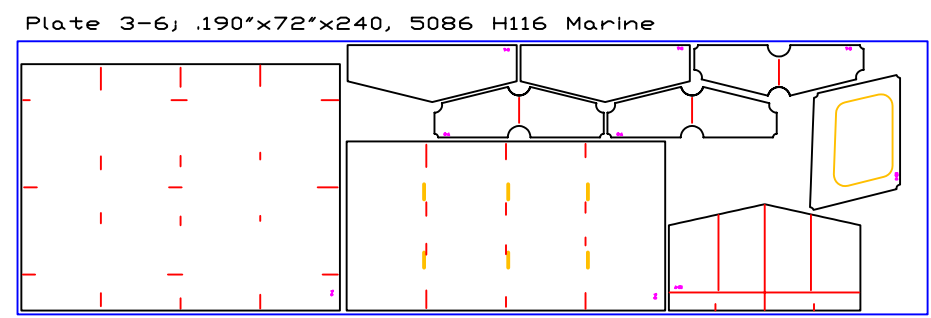
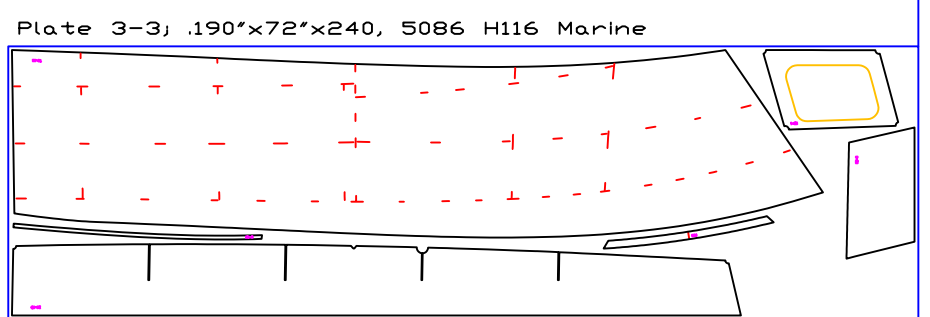
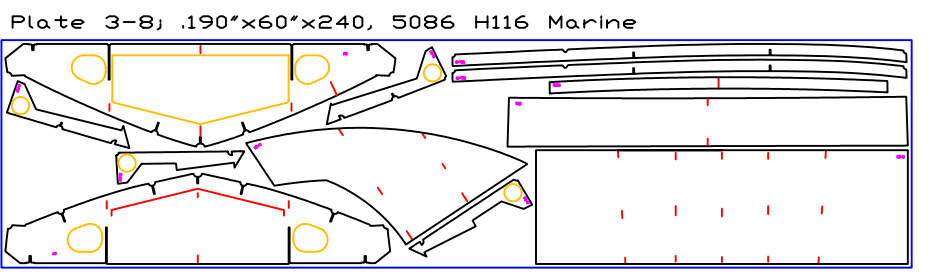
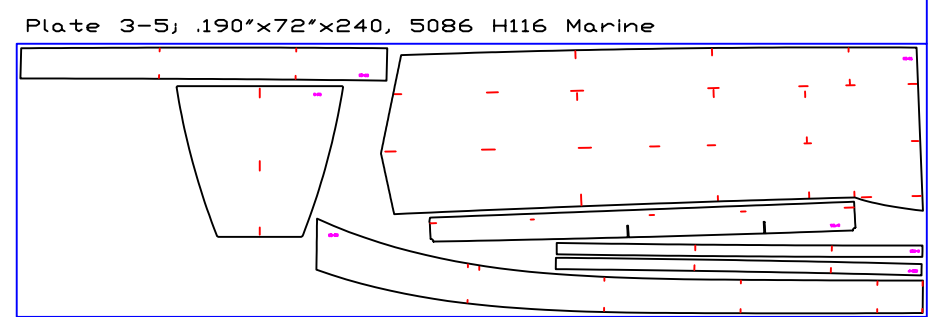
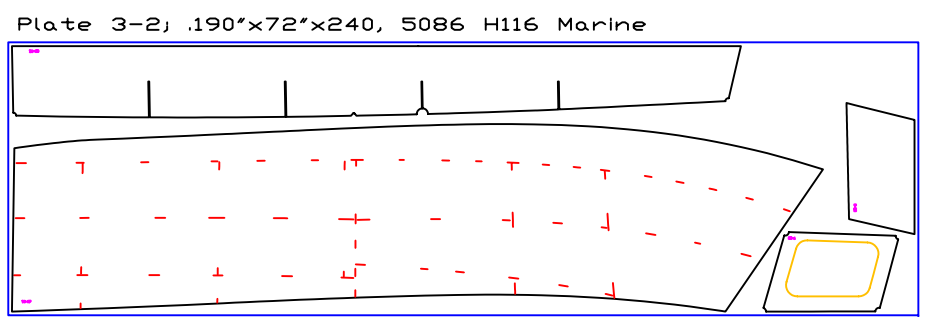
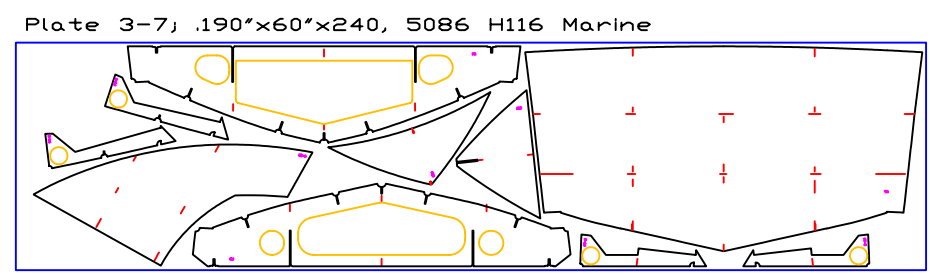
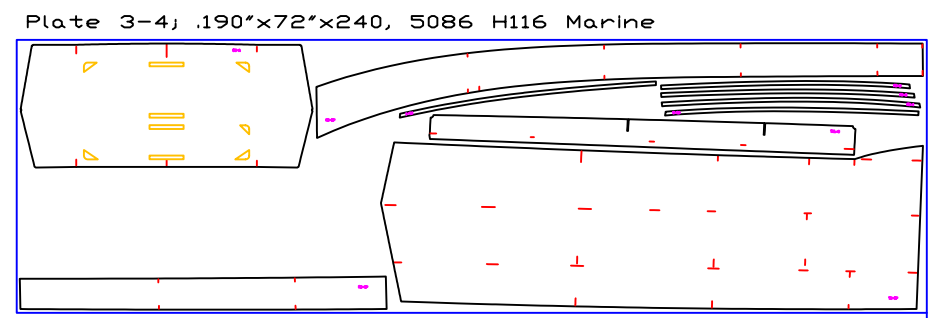
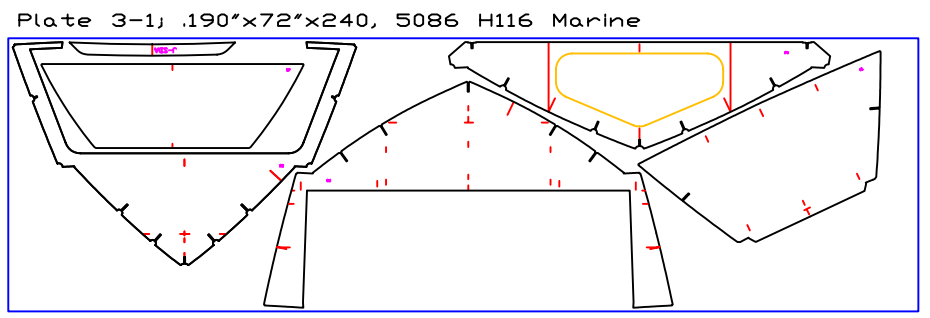
	<u>QTY</u>	<u>Description</u>	<u>Alloy</u>	<u>Dims</u>	<u>Thick</u>	<u>Length</u>	<u>lbs/ft</u>	<u>Lbs</u>
Flanges	12	Flat Bar	6061 T6	1.5	0.19	12	0.332	48
Deck, Constr.	15	Tee, Structural	6061 T6	1.5x1.5	0.25	25	0.870	326
Collars	1	4" Sch 40 Pipe	6061 T6	4.5	0.237	20	3.730	75
RubRails	3	2.5" Sch 40 Pipe	6061 T6	2.875	0.203	20	2.000	120
B'wrk Rail	2	1.25" Sch 40 Pipe	6061 T6	1.66	0.14	20	0.790	32
House	5	Channel, A.A., .58#	6061 T6	2x1	0.13	25	0.58	73
House	2	Channel, AA, 1.737#	6061 T6	4x2	.15,.23	25	1.737	87
							Sub Total Extrusion	760
							Total Aluminum	7,171

Notes:

- 1) 9 of the 1.5" T's are for deck construction & misc. stiffening
 6 more are for use on plating during construction.
- 2) 2.5" pipe is to be split for the rubrails. This may instead be purchased as half pipe, in which case the quantity should be doubled.
- 3) 4' pipe stock is much more than needed. Only need 2 feet for ~ 1 1/2" collars at frames under side decks.

Response Marine, Inc.
 Krecak 2896
 3/16" Plate Layouts for Hull
 10/2/08
 No Scale

- Notes:
 1) Layers:
 Plaz 1 (White/Black), Part outside cuts
 Plaz 2 (Gold), Part Interior cuts
 Plaz 3 (Red), Part Marking
 Plaz 4 (Magenta), Part Labels
 Plaz 5 (Blue), Plate Perimeters & Notes
 2) Plates 3-2 & 3 to be cut with the natural plate camber UP



Notes:

1) Layers:

- Plaz 1 (White/Black), Part outside cuts
- Plaz 2 (Gold), Part Interior cuts
- Plaz 3 (Red), Part Marking
- Plaz 4 (Magenta), Part Labels
- Plaz 5 (Blue), Plate Perimeters & Notes

Response Marine, Inc.
Krecak 2896
3/16" Plate Layouts for House
10/2/08
No Scale

Plate H3-1; .190x48x96"

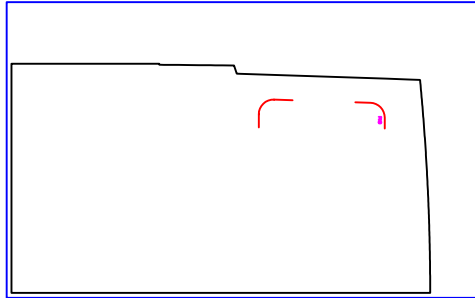


Plate H3-4; .190x48x96"

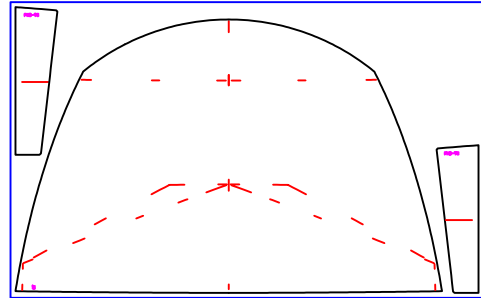


Plate H3-6; .190x60x240"

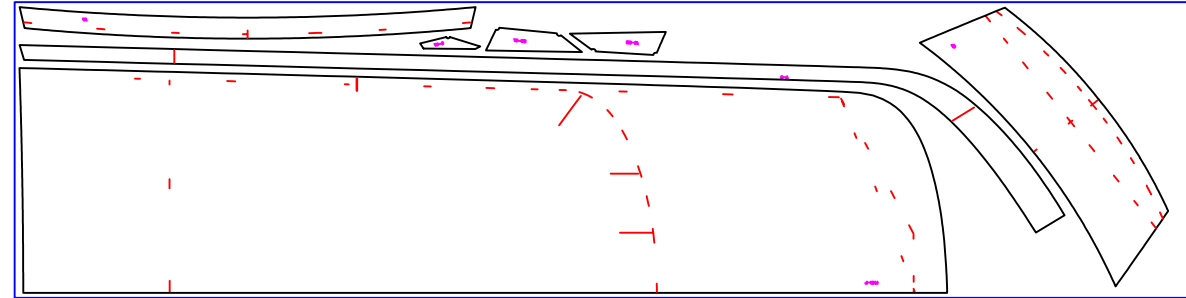


Plate H3-2; .190x48x96"

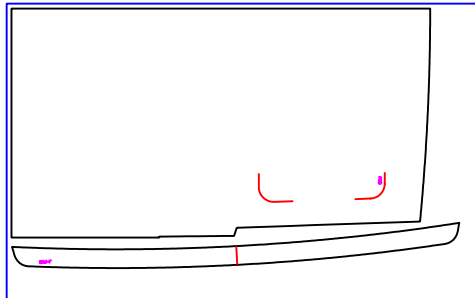


Plate H3-5; .190x48x96"

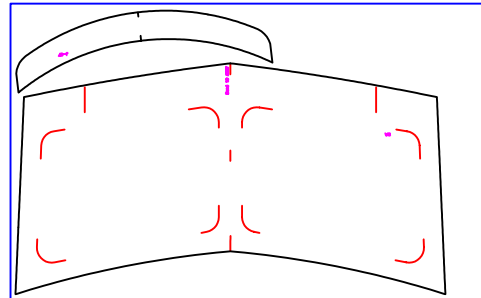


Plate H3-7; .190x60x240"

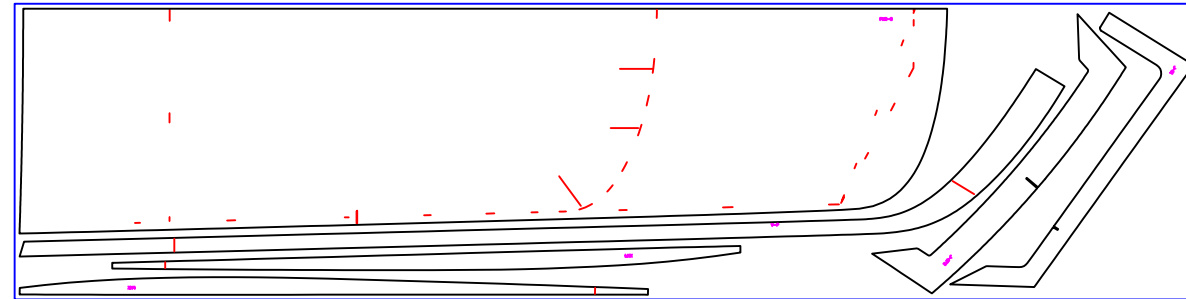


Plate H3-3; .190x48x96"

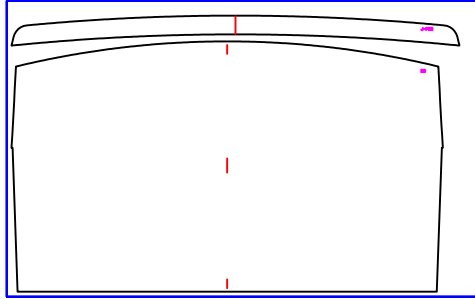


Plate H3-8; .190x60x240"

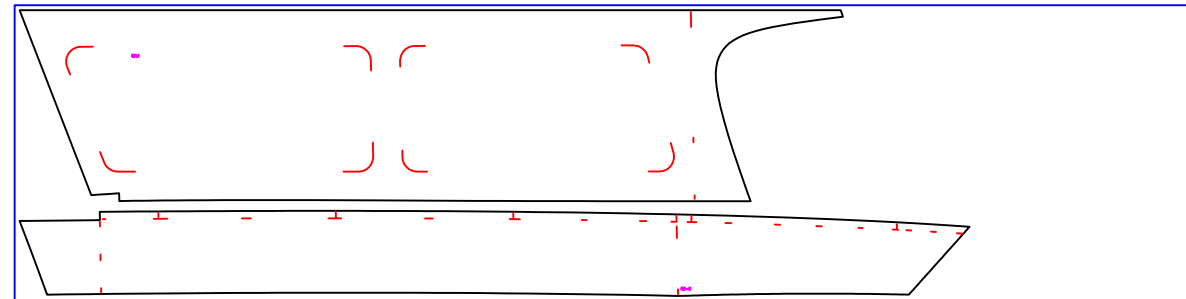


Plate H3-9; .190x60x240"

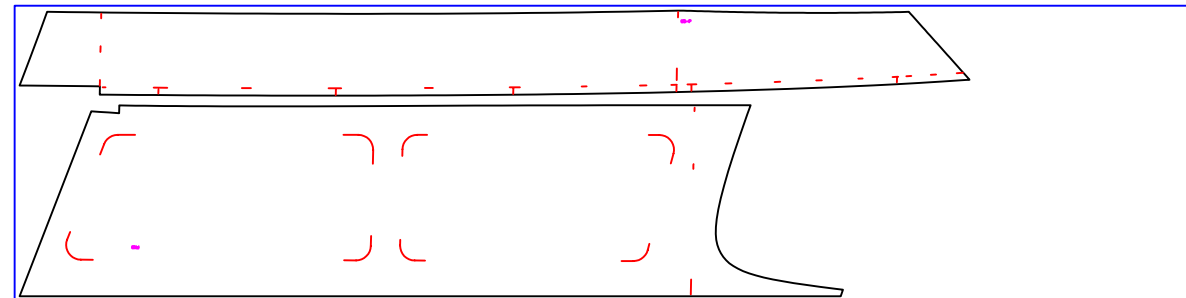


Plate 4-1; .250"x48"x120"

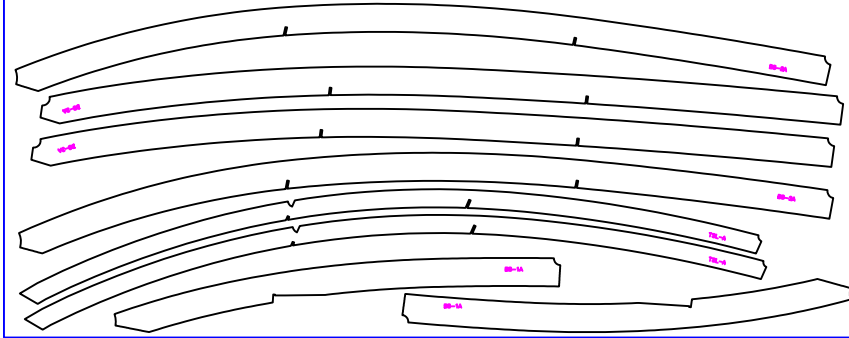


Plate 4-4; .250"x36"x240"

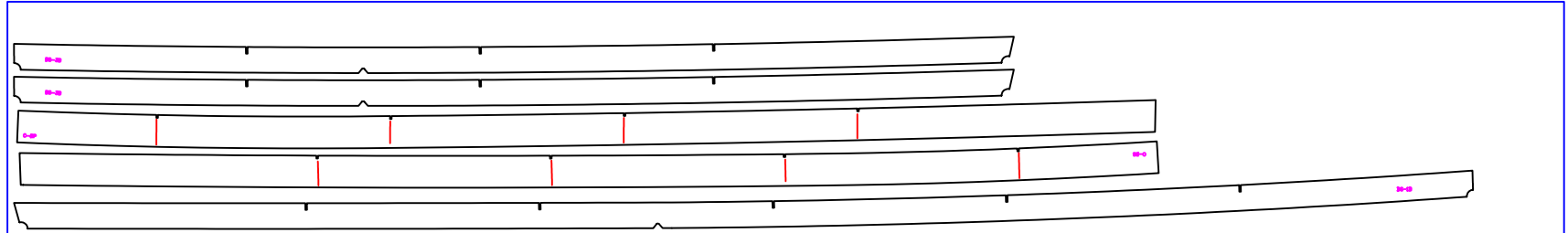


Plate 4-2; .250"x72"x144"

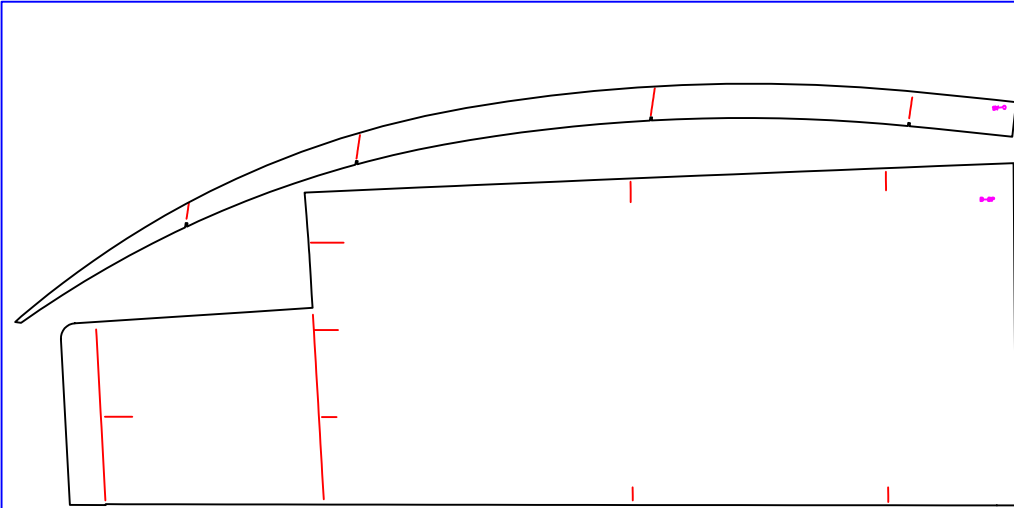


Plate 4-5; .250"x60"x240"

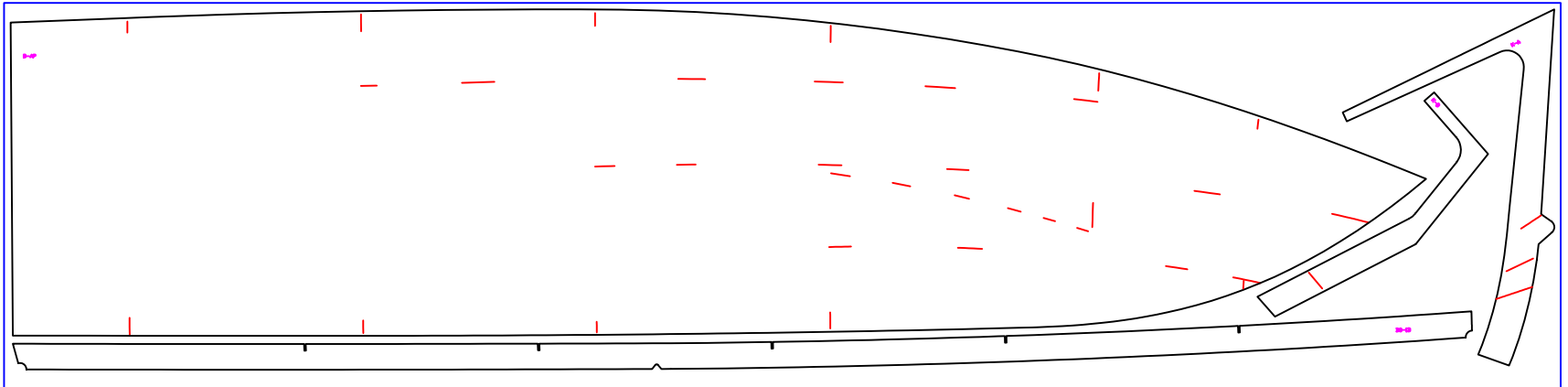


Plate 4-3; .250"x72"x144"

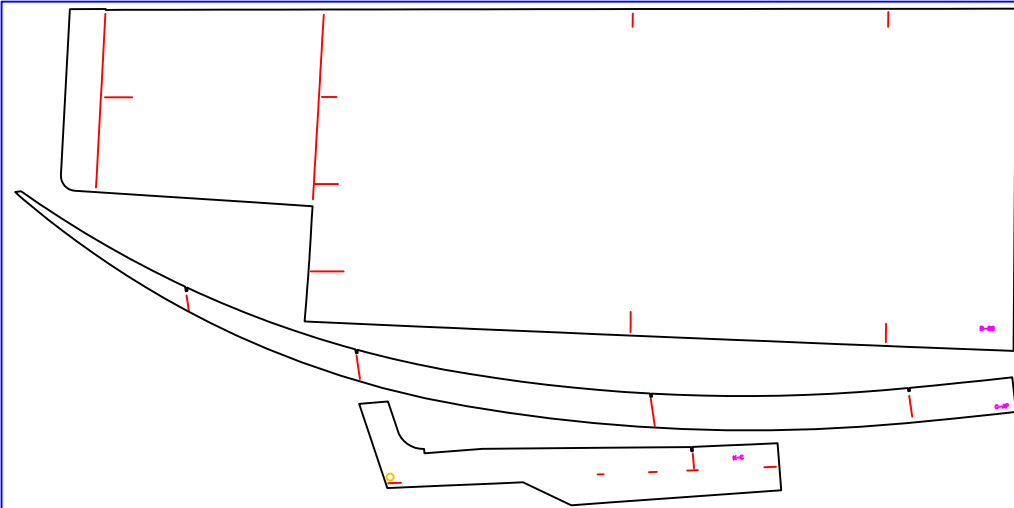
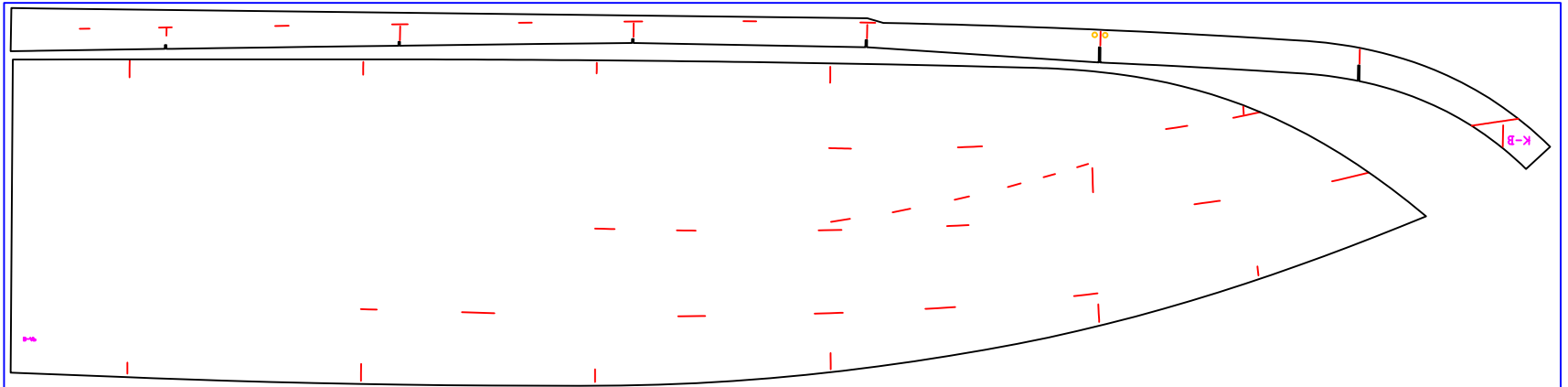
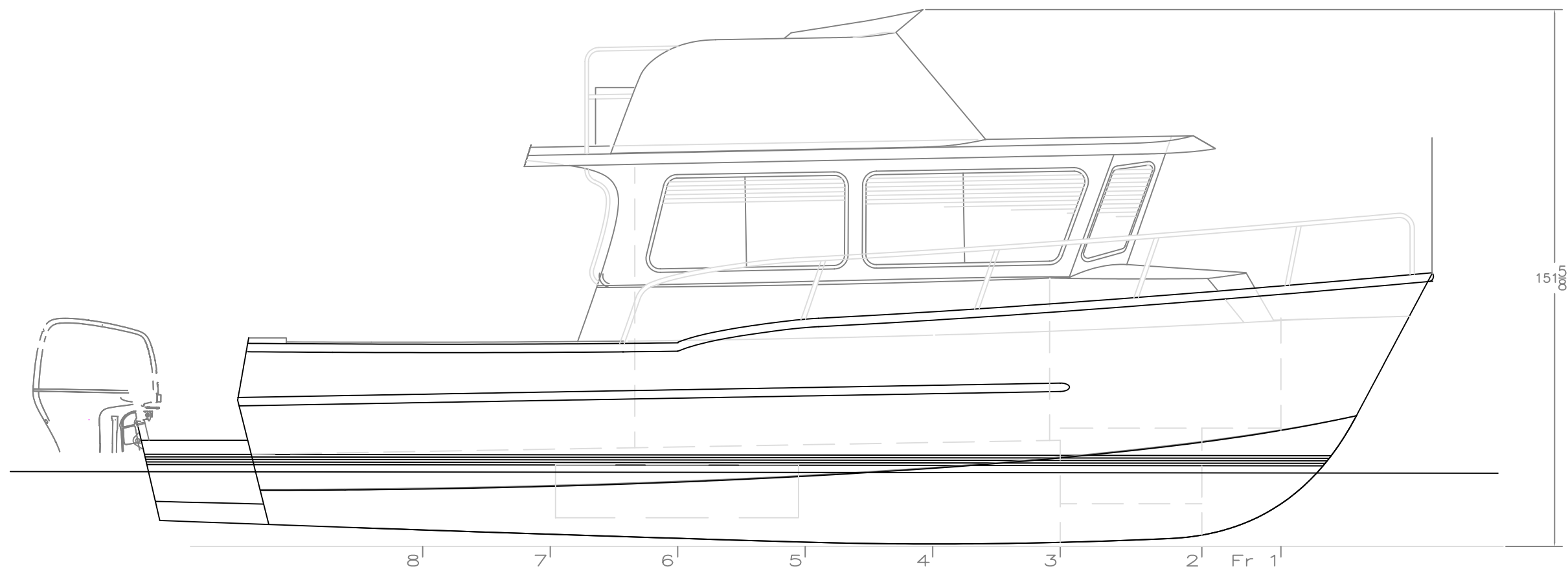
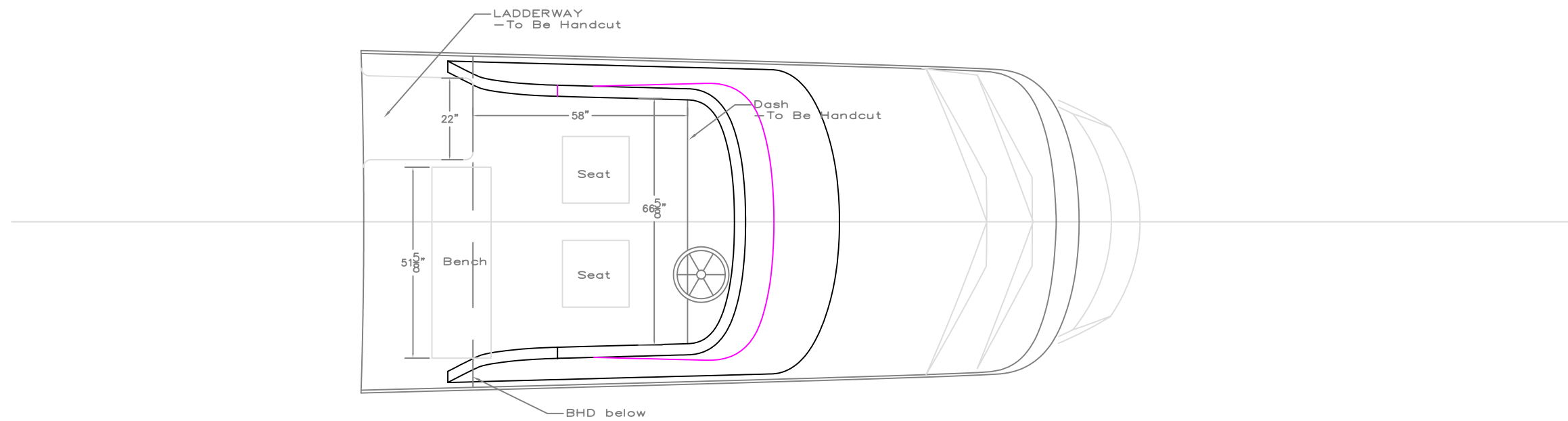
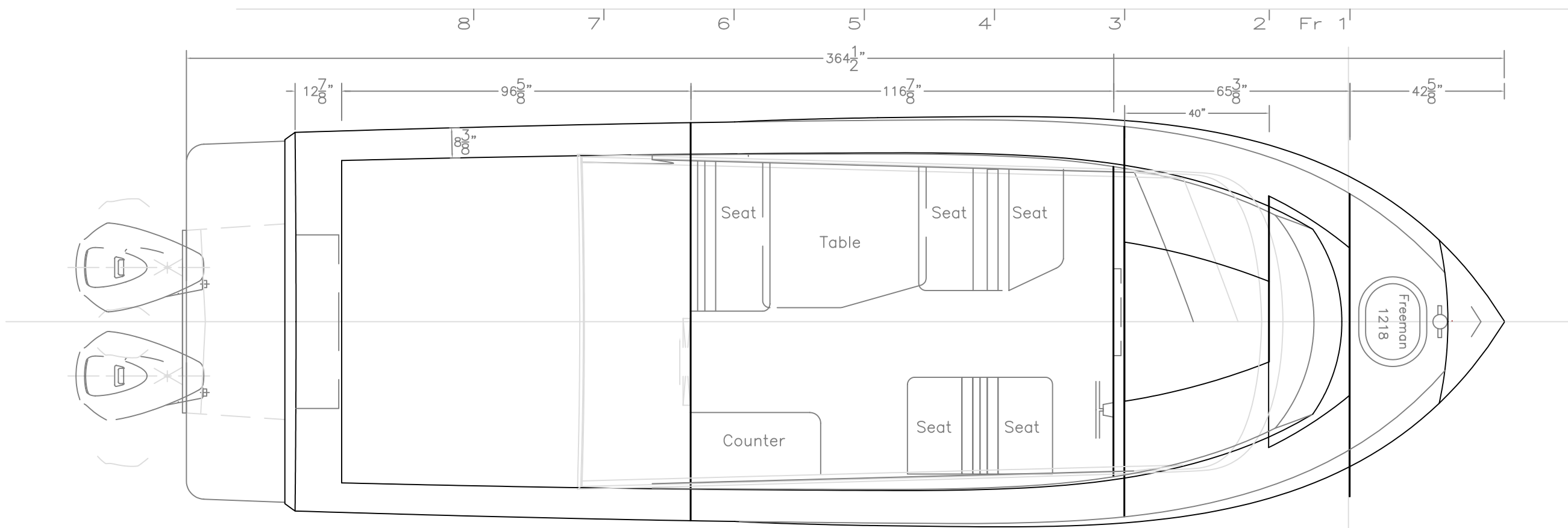


Plate 4-6; .250"x60"x240"





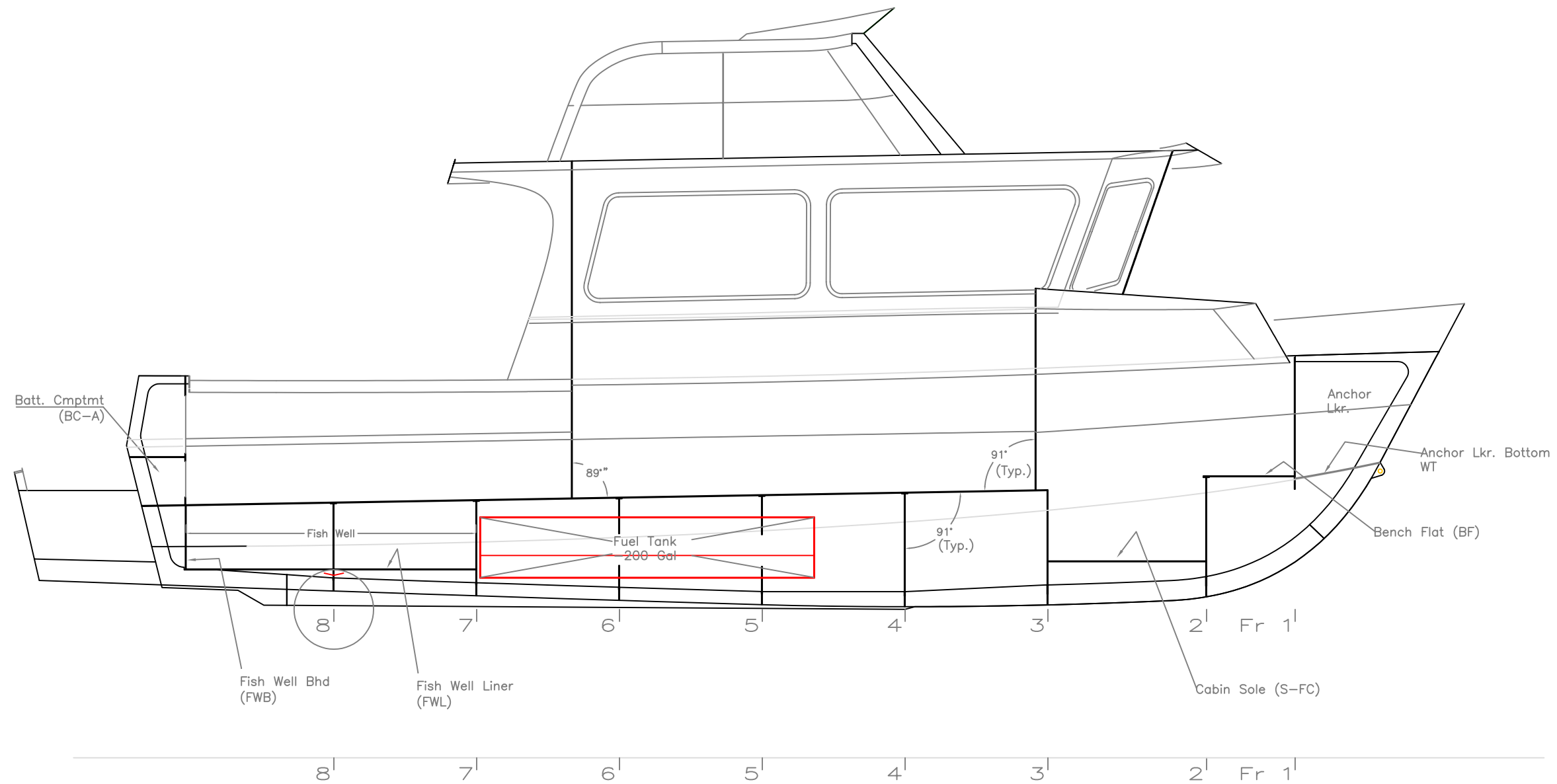
PROFILE & PLAN		
KRECAK 2896, 10' House		
SCALE 3/8"=1'	DES/DWN WAL	DATE 9/28/08
REV.		DESCRIPTION
Response Marine, Inc.		SHEET
Newport, MA www.responmarine.com		DWG NO. 317-01



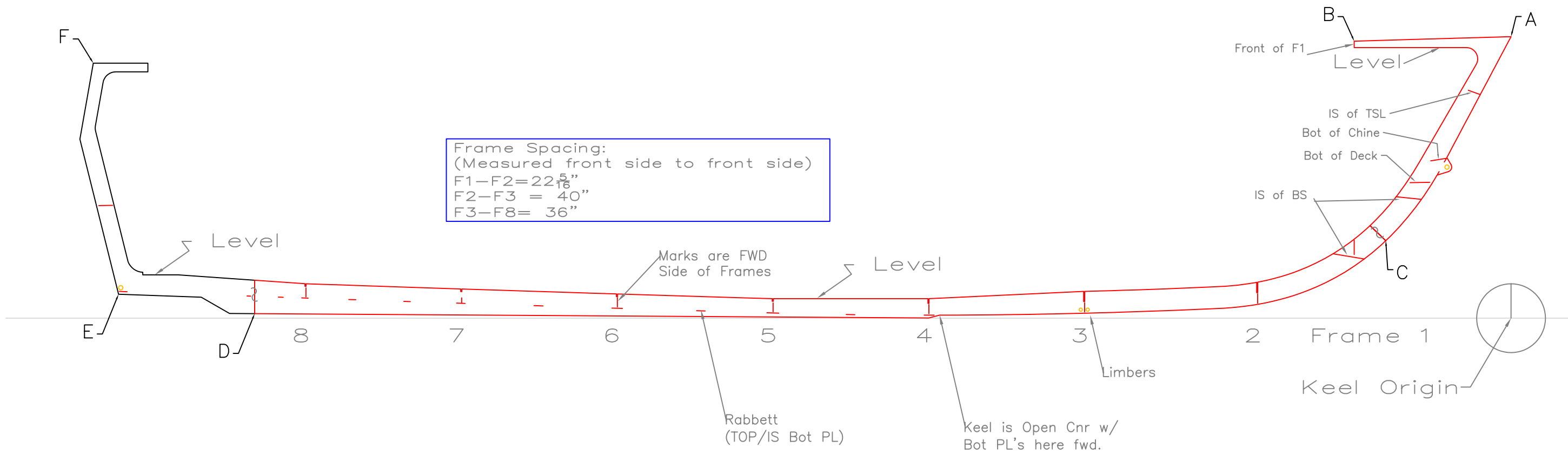
PLAN VIEW		
KRECAK 2896, 10' House		
SCALE 3/8" = 1'	DES/DWN WAL	DATE 9/28/08
SHEET		DWG NO. 317-02

REV.	DESCRIPTION

Response Marine, Inc.
 Newburgport, MA www.responsemarine.com



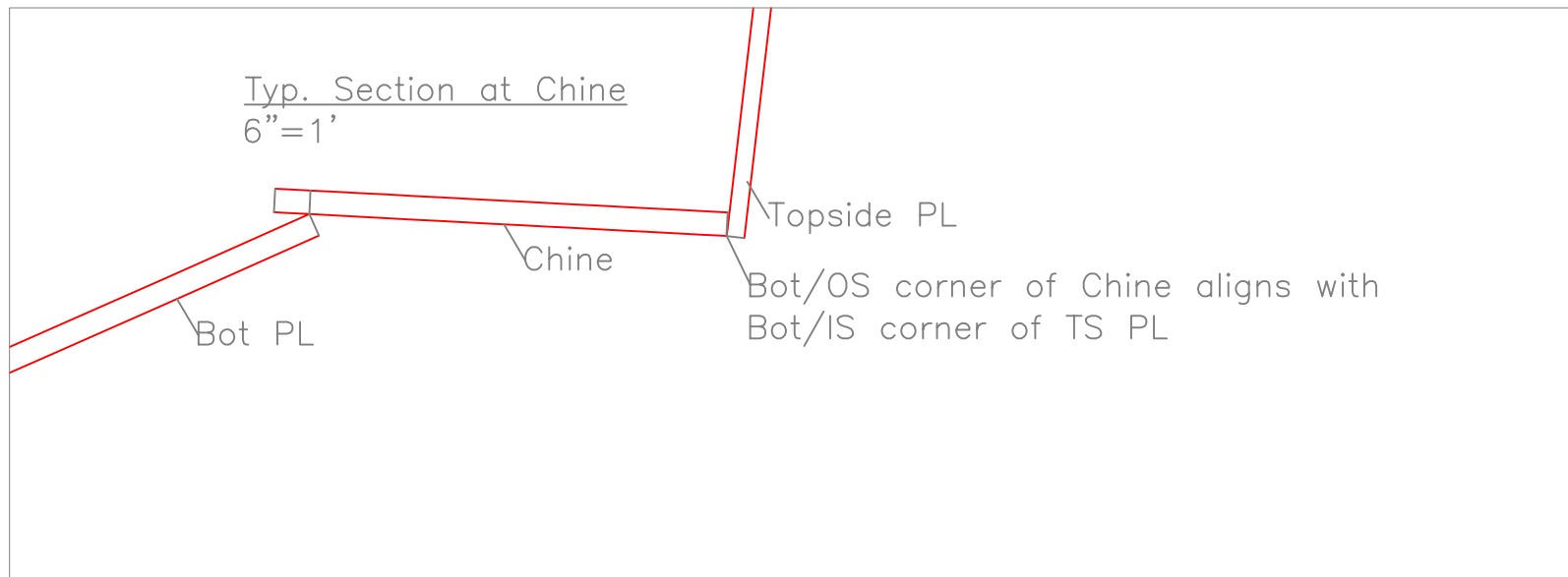
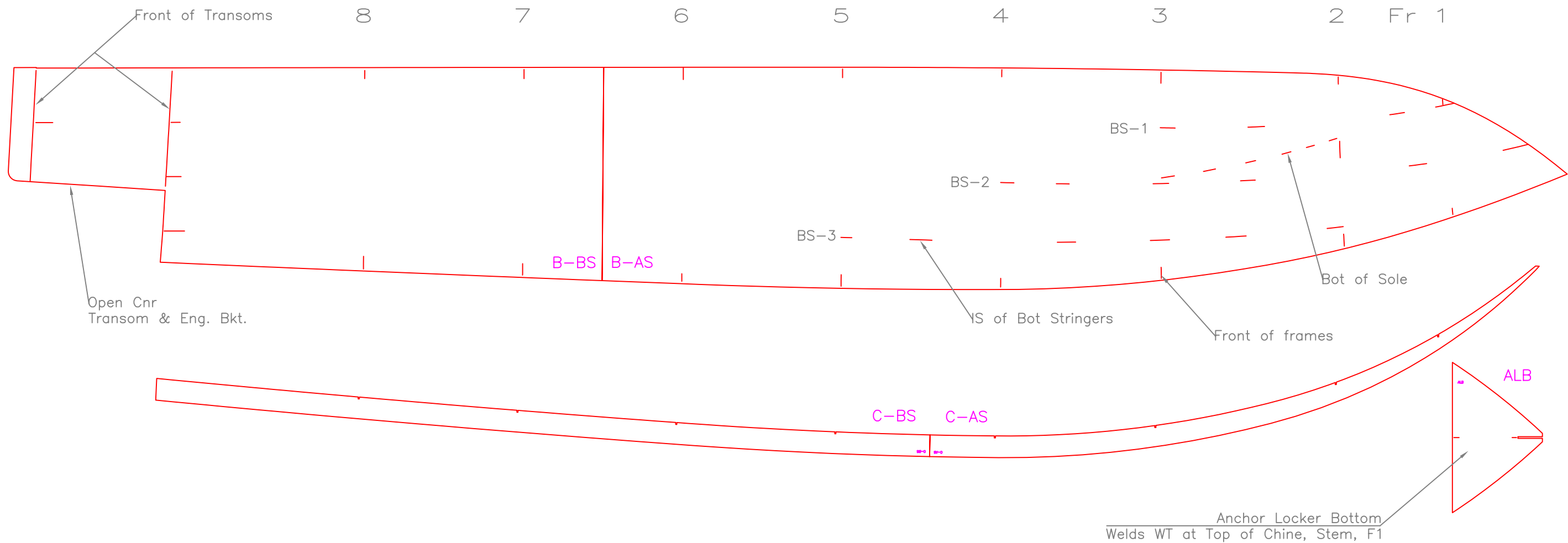
INBOARD PROFILE		
KRECAK 2896, 10' House		
SCALE 3/8" = 1'	DES/DWN WAL	DATE 9/28/08
REV.		SHEET
DESCRIPTION		DWG NO. 317-03
Response Marine, Inc. <small>Newingtonport, MA www.responsemarine.com</small>		



KEEL DIMENSIONS							
#317, Krecak 2895							
Response Marine, Inc. 9/24/08							
	Inches- sixteenths		ALIGNED (Inches-sixteenths)				
	Horizontal	Vertical	A	B	C	D	E
A to Origin							
B to Origin							
C to Origin							
D to Origin							
E to Origin							
F to Origin							
A to Origin							
B to Origin							
C to Origin							
D to Origin							
E to Origin							
F to Origin							

KEEL LAYOUT		
KRECAK 2895		
SCALE 1/2" = 1'	DES/DWN WAL	DATE 9/24/08
Response Marine, Inc.		SHEET
Newburgport, MA www.responsemarine.com		DWG NO. 317-2-1

REV.	DESCRIPTION

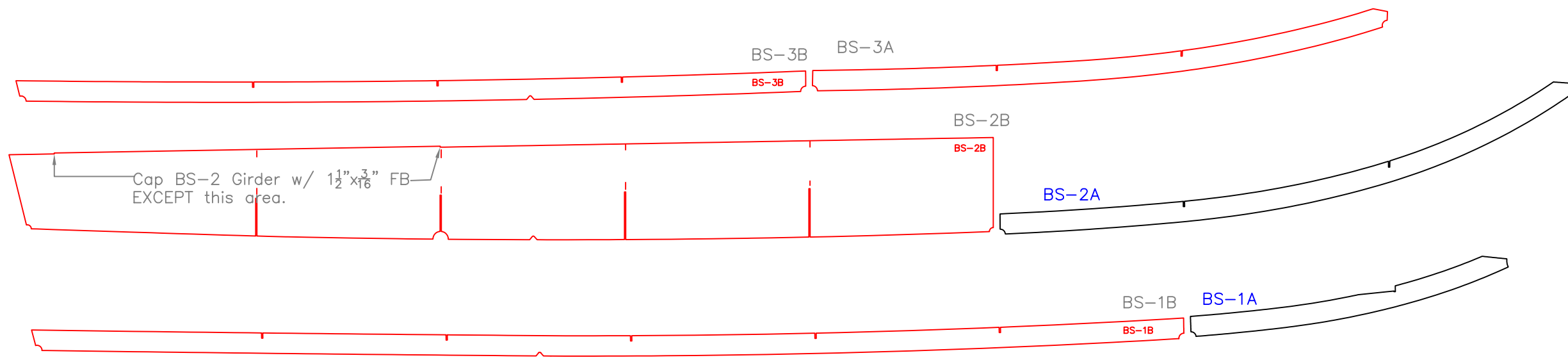


BOTTOM & CHINE LAYOUT		
KRECAK 2896, 10' House		
SCALE 1/2"=1'	DES/DWN WAL	DATE 9/26/08
SHEET		DWG NO. 317-2-2

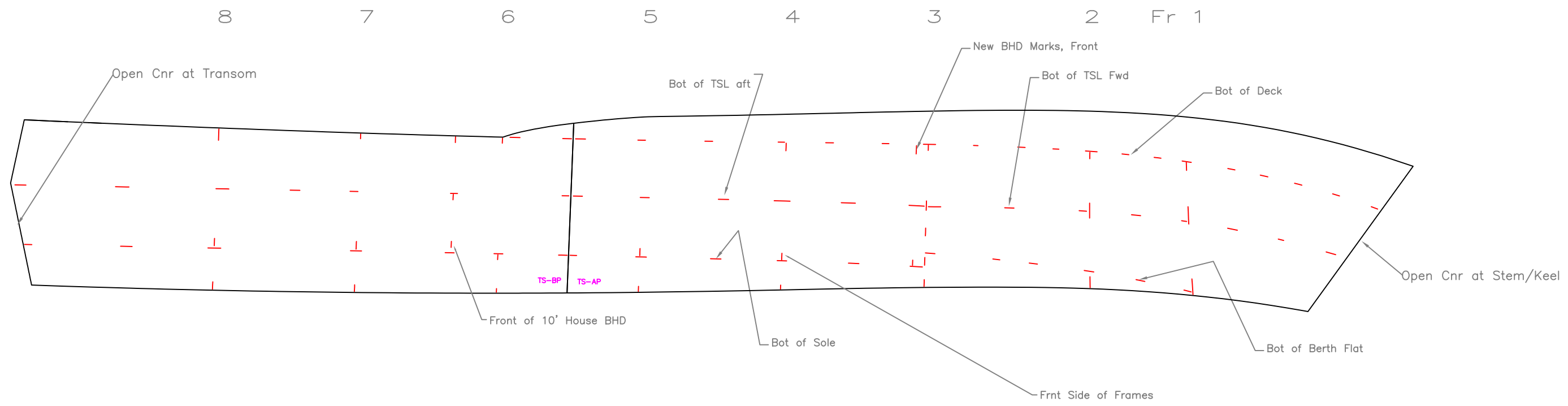
REV.	DESCRIPTION

Response Marine, Inc.
 Newburgport, MA www.responsemarine.com

8 7 6 5 4 3 Frame 2

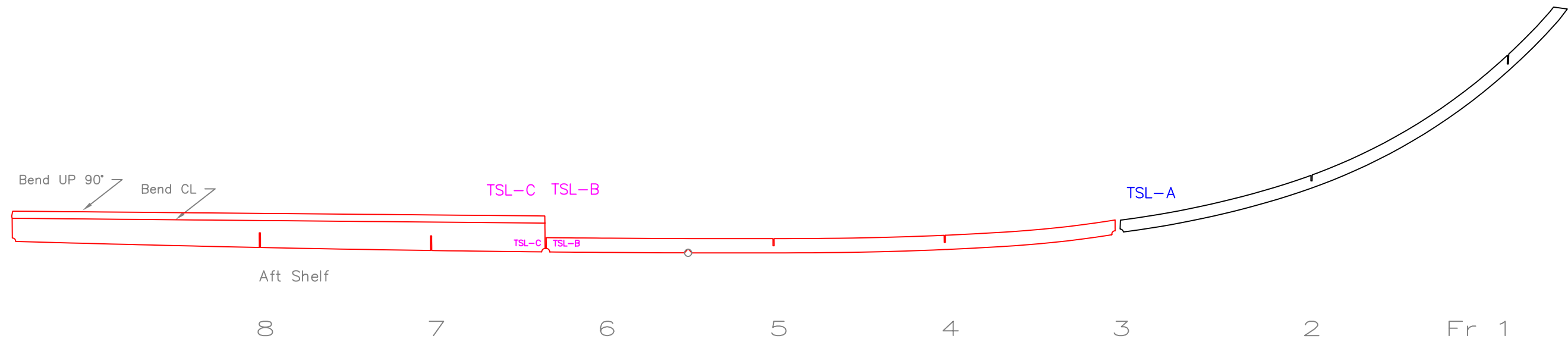


BOTTOM STRINGERS								
KRECAK 2896, 10' House								
SCALE 1/2"=1'	DES/DWN WAL	DATE 9/27/08						
<table border="1"> <thead> <tr> <th>REV.</th> <th>DESCRIPTION</th> </tr> </thead> <tbody> <tr> <td> </td> <td> </td> </tr> </tbody> </table>		REV.	DESCRIPTION			<table border="1"> <tr> <td>SHEET</td> </tr> <tr> <td>DWG NO. 317-2-3</td> </tr> </table>	SHEET	DWG NO. 317-2-3
REV.	DESCRIPTION							
SHEET								
DWG NO. 317-2-3								
Response Marine, Inc. <small>Newington, MA www.responsemarine.com</small>								



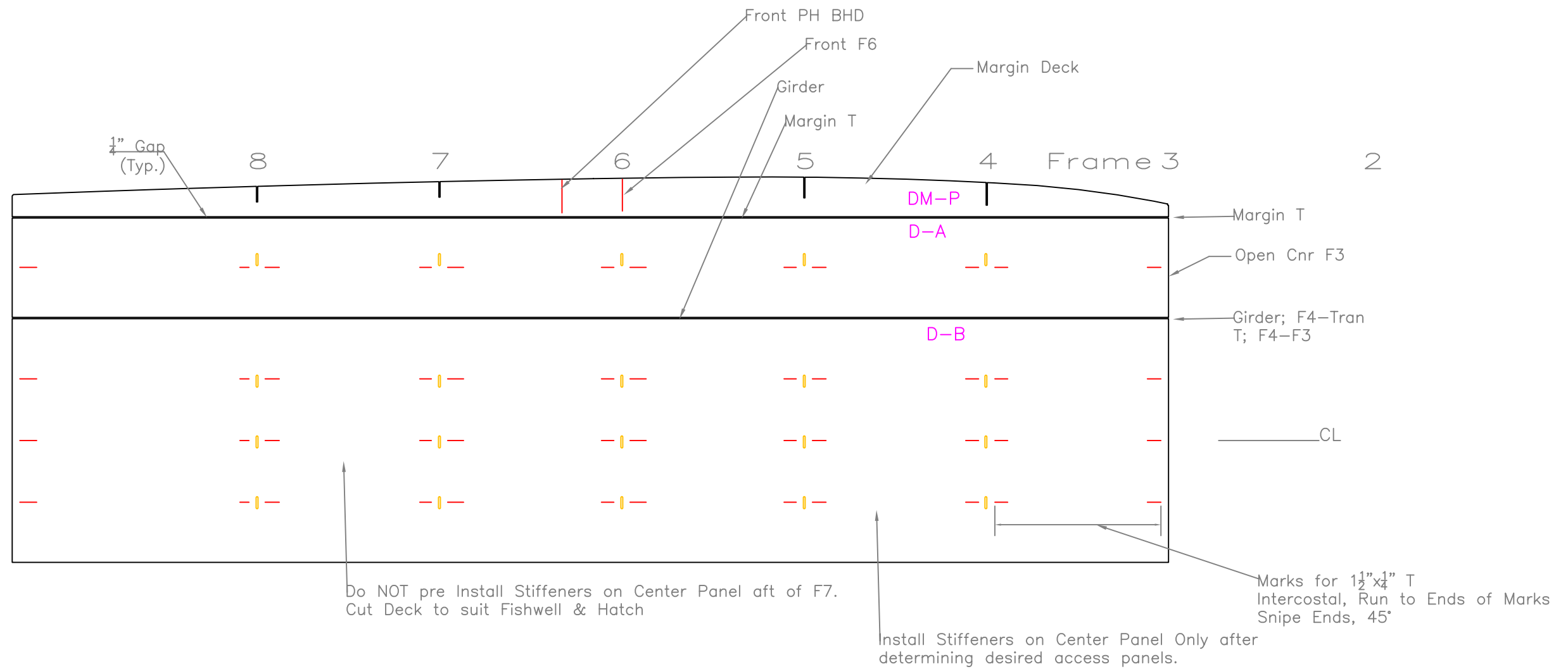
SIDE PLATE LAYOUT		
KRECAK 2896, 10' House		
SCALE NONE	DES/DWN WAL	DATE 9/26/08
REV. DESCRIPTION		SHEET
		DWG NO. 317-2-4

Response Marine, Inc.
 Newington, MA www.responsemarine.com



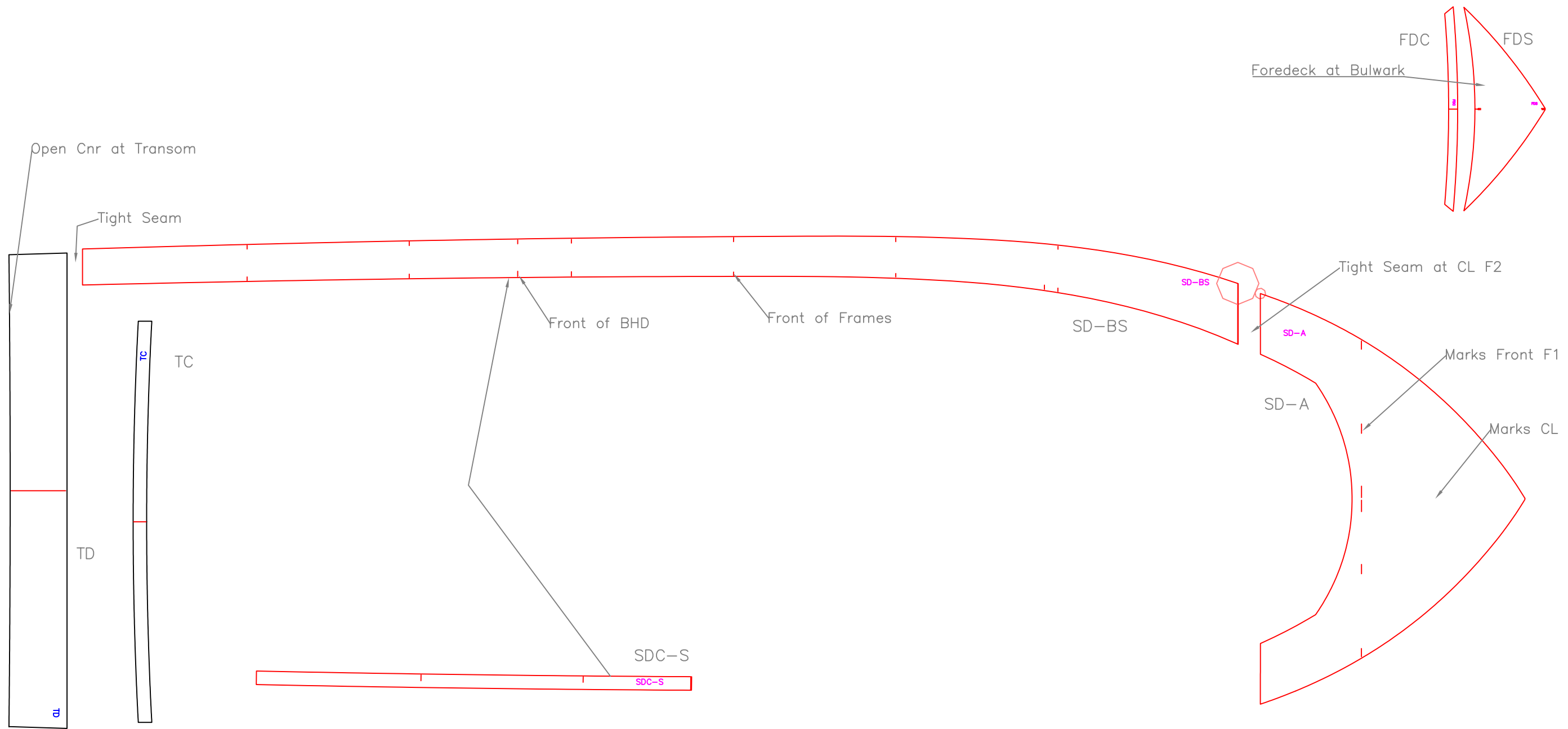
TOPSIDE STRINGERS		
KRECAK 2896, 10' House		
SCALE 1/2"=1'	DES/DWN WAL	DATE 9/27/08
Response Marine, Inc. <small>Newington, MA www.responsemarine.com</small>		SHEET DWG NO. 317-2-5

REV.	DESCRIPTION



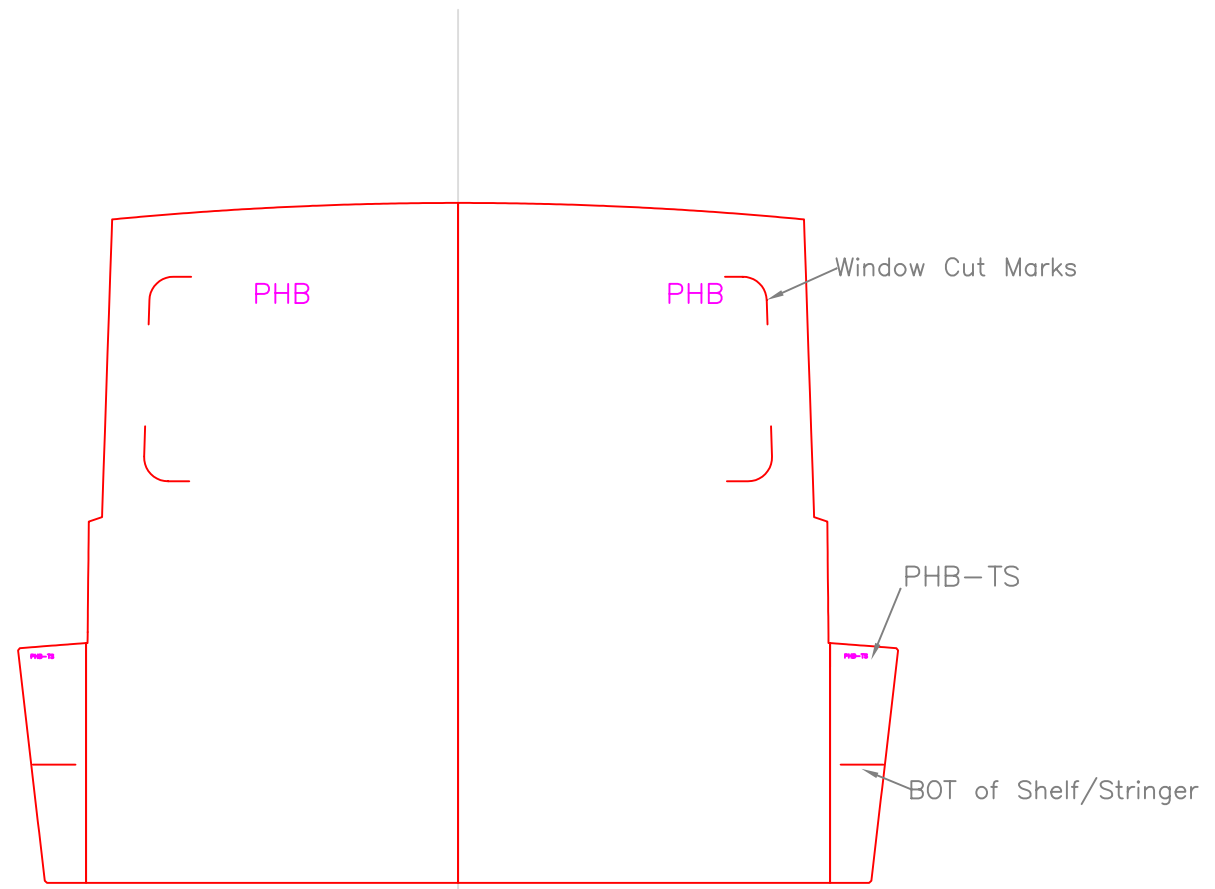
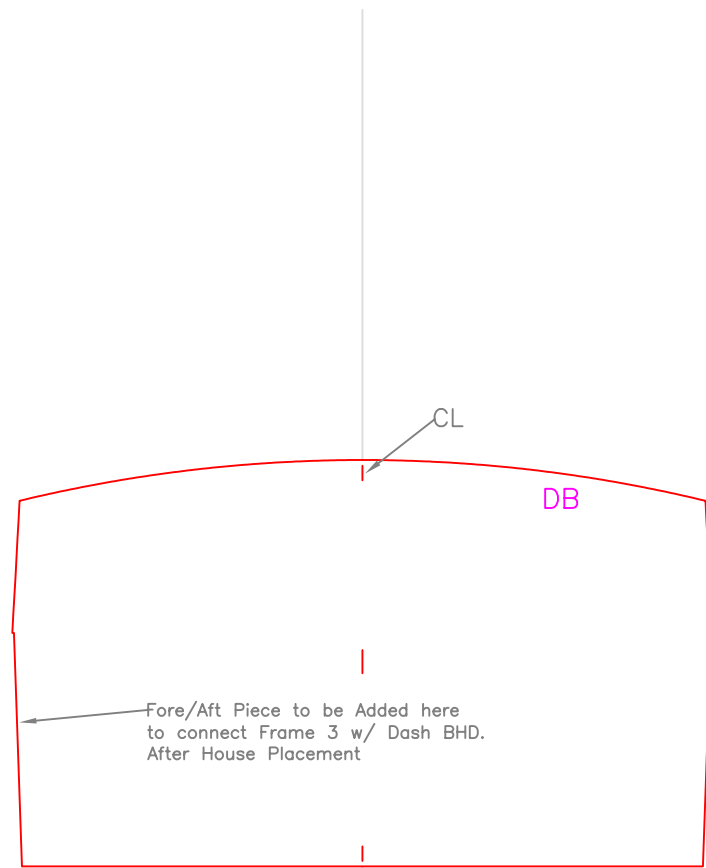
Notes:
 1) Center Deck Body (D-B) is NOT being NC Cut. Blank Stock is to be ordered for this (2) 48x144x³/₁₆", 5052, 5083 or 5086

COCKPIT DECK								
KRECAK 2896, 10' House								
SCALE 1/2"=1'	DES/DWN WAL	DATE 9/26/08						
<table border="1"> <thead> <tr> <th>REV.</th> <th>DESCRIPTION</th> </tr> </thead> <tbody> <tr> <td> </td> <td> </td> </tr> </tbody> </table>		REV.	DESCRIPTION			<table border="1"> <tr> <td>SHEET</td> </tr> <tr> <td>DWG NO. 317-2-6</td> </tr> </table>	SHEET	DWG NO. 317-2-6
REV.	DESCRIPTION							
SHEET								
DWG NO. 317-2-6								
Response Marine, Inc. <small>Newingtonport, MA www.responsemarine.com</small>								



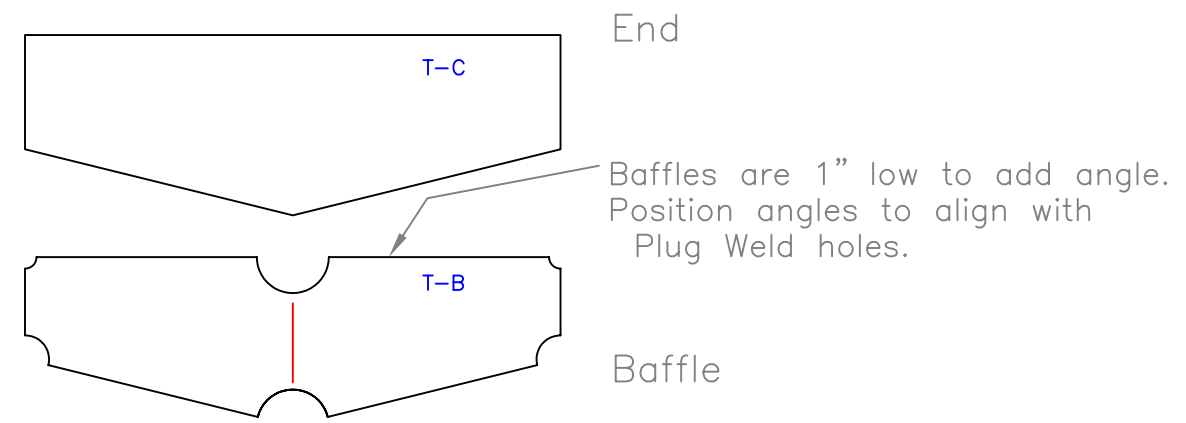
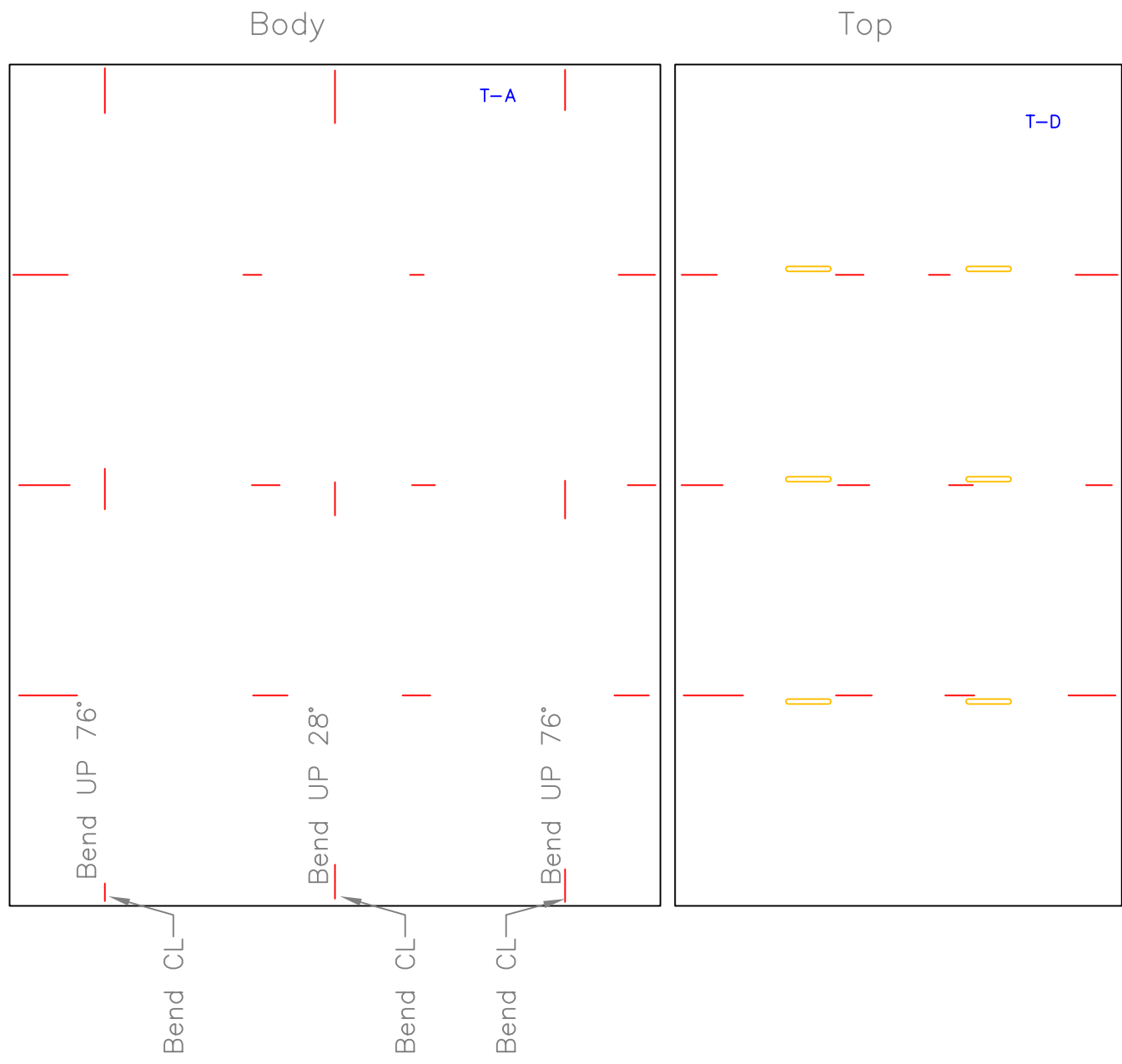
SIDE/FORE DECK LAYOUT		
KRECAK 2896, 10' House		
SCALE 1/2"=1'	DES/DWN WAL	DATE 9/26/08
Response Marine, Inc. <small>Newington, MA www.responsemarine.com</small>		SHEET
		DWG NO. 317-2-7

REV.	DESCRIPTION



CABIN BULKHEADS		
KRECAK 2896, 10' House		
SCALE 1/2"=1'	DES/DWN WAL	DATE 9/26/08
Response Marine, Inc. <small>Newington, MA www.responsemarine.com</small>		SHEET DWG NO. 317-2-8

REV.	DESCRIPTION

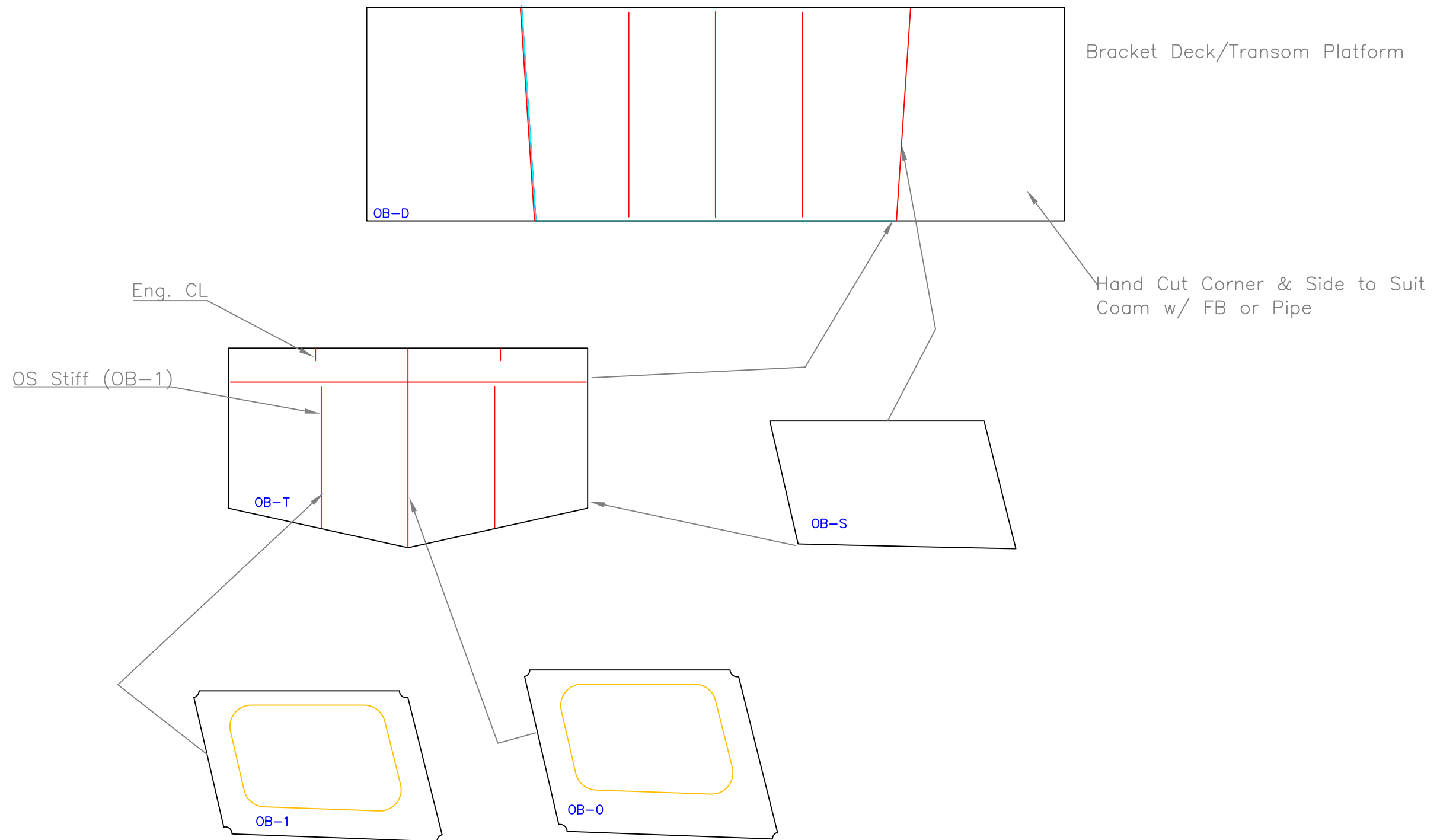


Baffle PL
-3 plcs

- Notes:
- 1) Bend Body to Match End (T-4), 1/2" Rad. Bends
 - 2) Weld Ends Inside & Out
 - 3) Top Plug Welds to Baffles, Open Corner at Perimeter

FUEL TANK- 200 Gal.		
KRECAK 2896, 10' House		
SCALE 3/4"=1'	DES/DWN WAL	DATE 9/23/08
Response Marine, Inc. <small>Newington, MA www.responsemarine.com</small>		SHEET DWG NO. 317-3-1

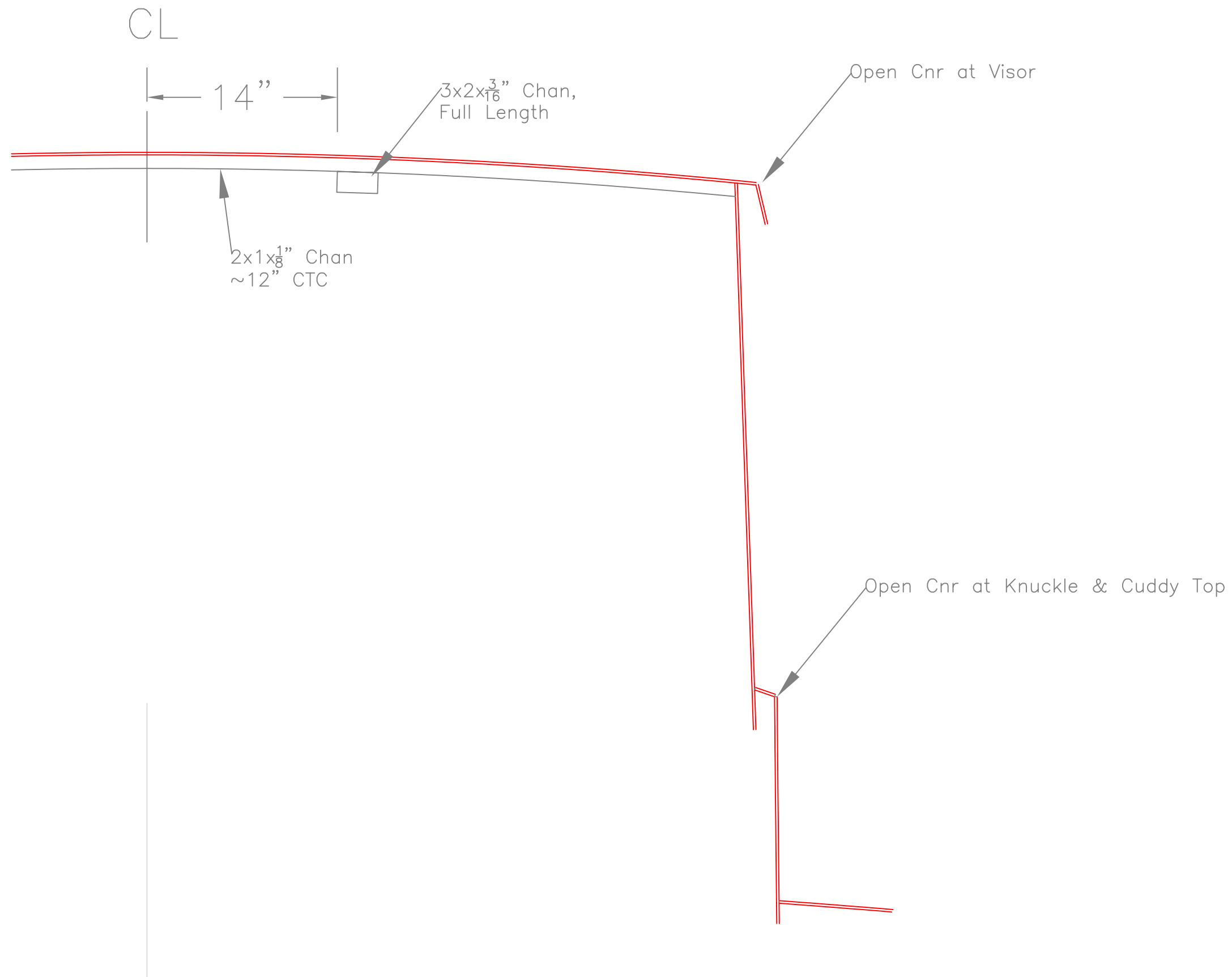
REV.	DESCRIPTION



ENGINE BRACKET		
KRECAK 2896, 10' House		
SCALE 3/4"=1'	DES/DWN WAL	DATE 9/23/08
REV.		SHEET
DESCRIPTION		DWG NO. 317-3-2

Response Marine, Inc.

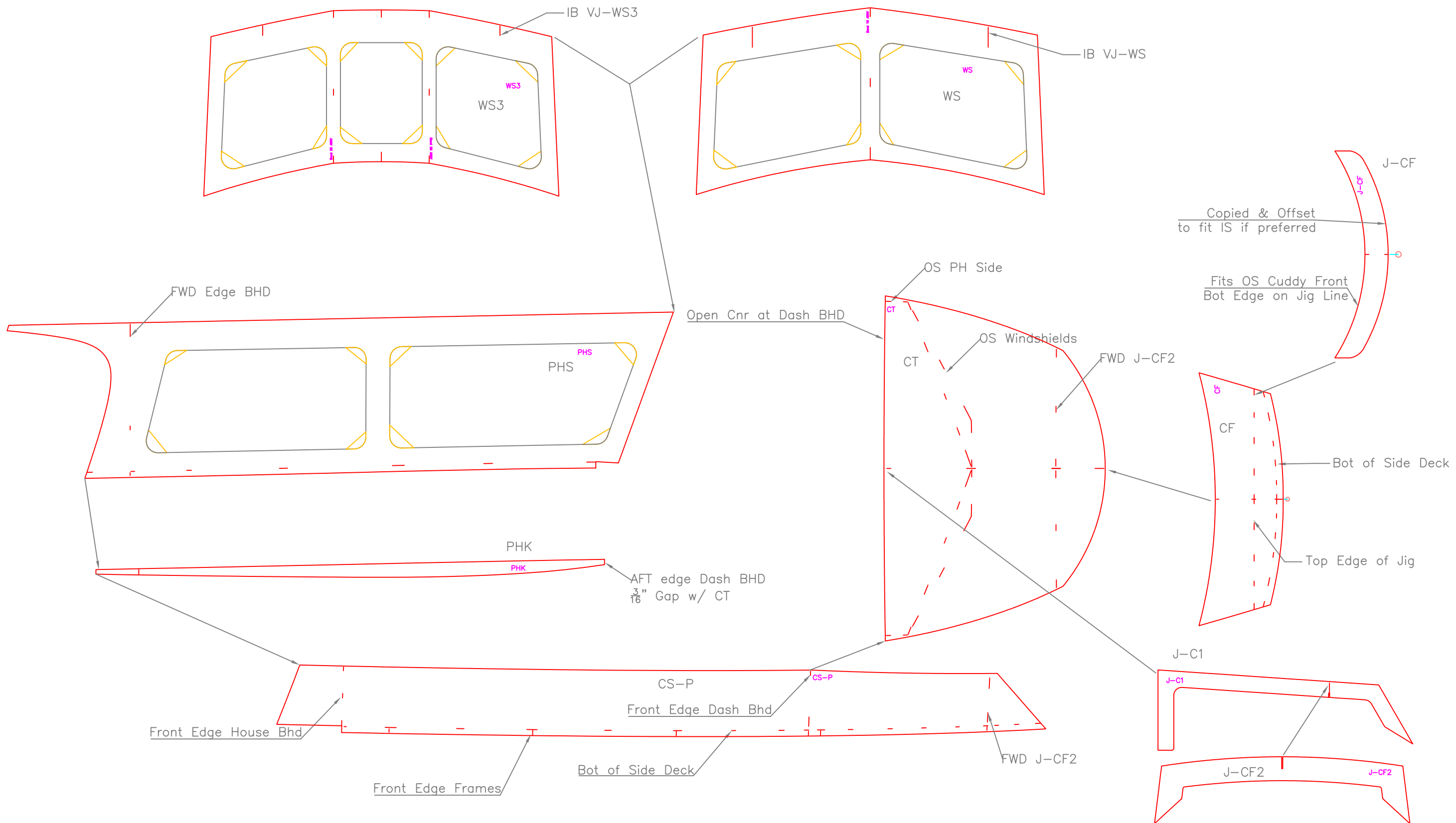
Newport, MA www.responsemarine.com



PILOTHOUSE— TYP. SECT.		
KRECAK 2896, 10' House		
SCALE 1 1/2"=1'	DES/DWN WAL	DATE 9/27/08
REV.		SHEET
DESCRIPTION		DWG NO. 317-4-1

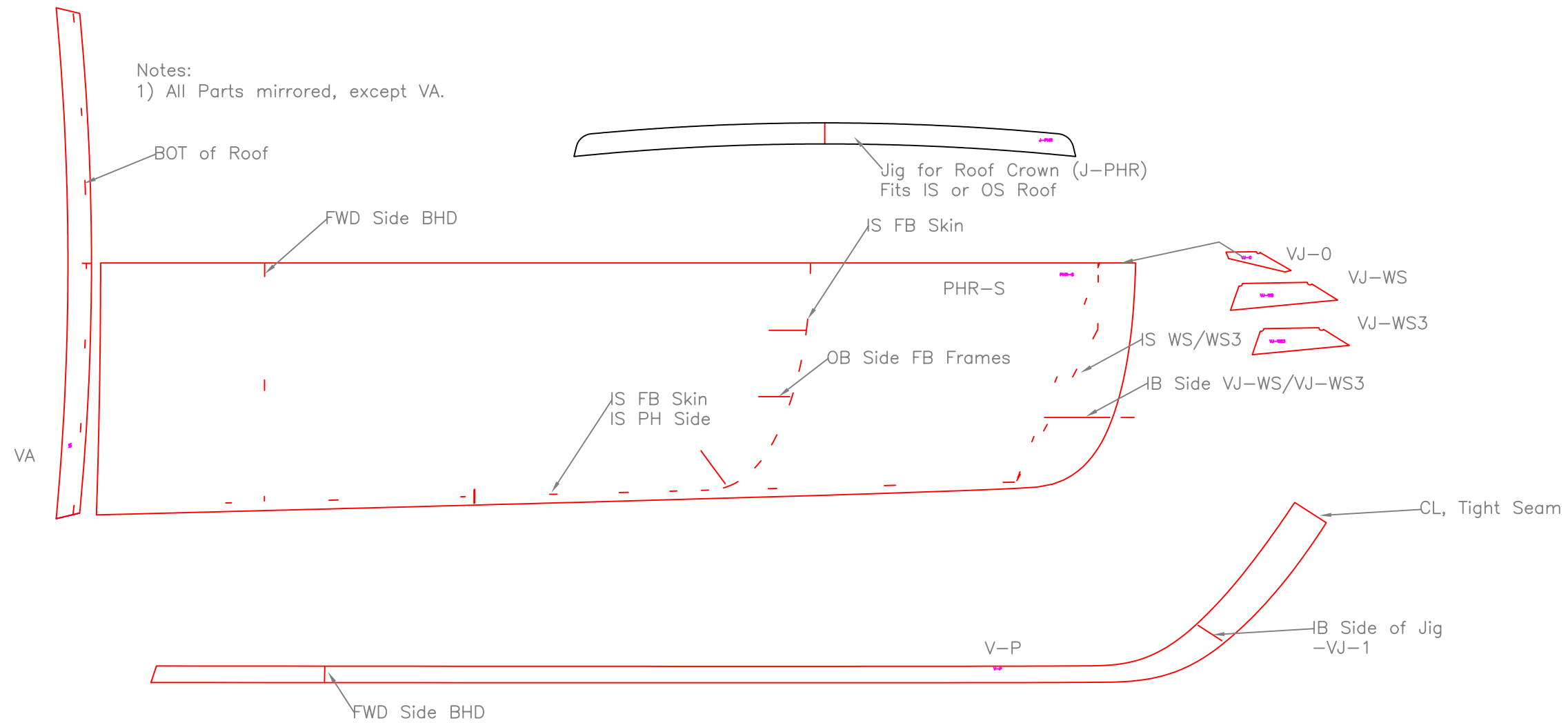
Response Marine, Inc.

Newington, MA www.responsemarine.com

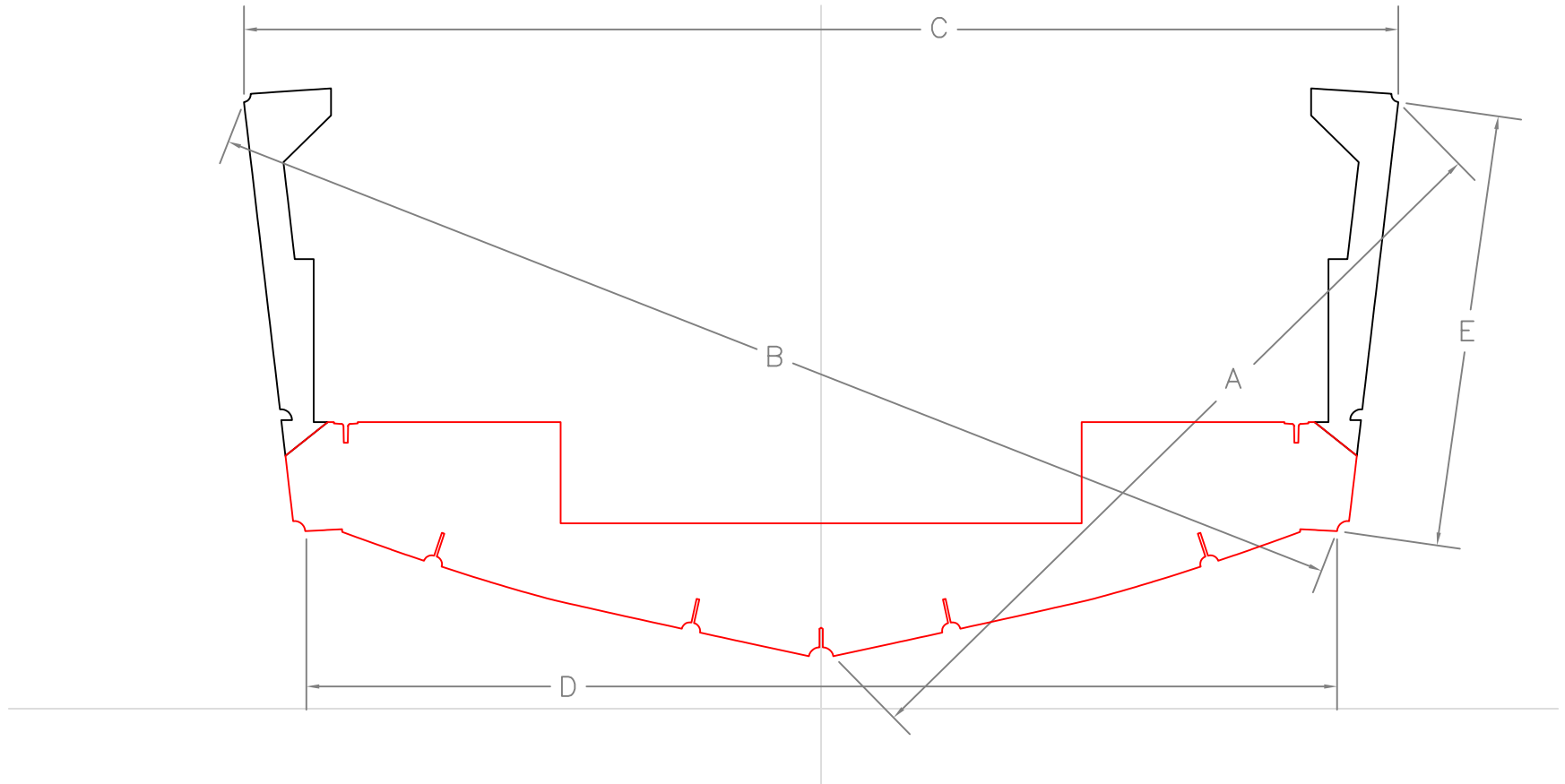


PILOTHOUSE ASSY		
KRECAK 2896, 10' House		
SCALE 1/2"=1'	DES/DWN WAL	DATE 9/28/08
Response Marine, Inc. <small>Newburyport, MA www.responsemarine.com</small>		SHEET DWG NO. 317-4-2

REV.	DESCRIPTION



ROOF ASSEMBLY		
KRECAK 2896, 10' House		
SCALE 1/2"=1'	DES/DWN WAL	DATE 9/26/08
REV.		DESCRIPTION
Response Marine, Inc.		SHEET
Newington, MA www.responsemarine.com		DWG NO. 317-4-3



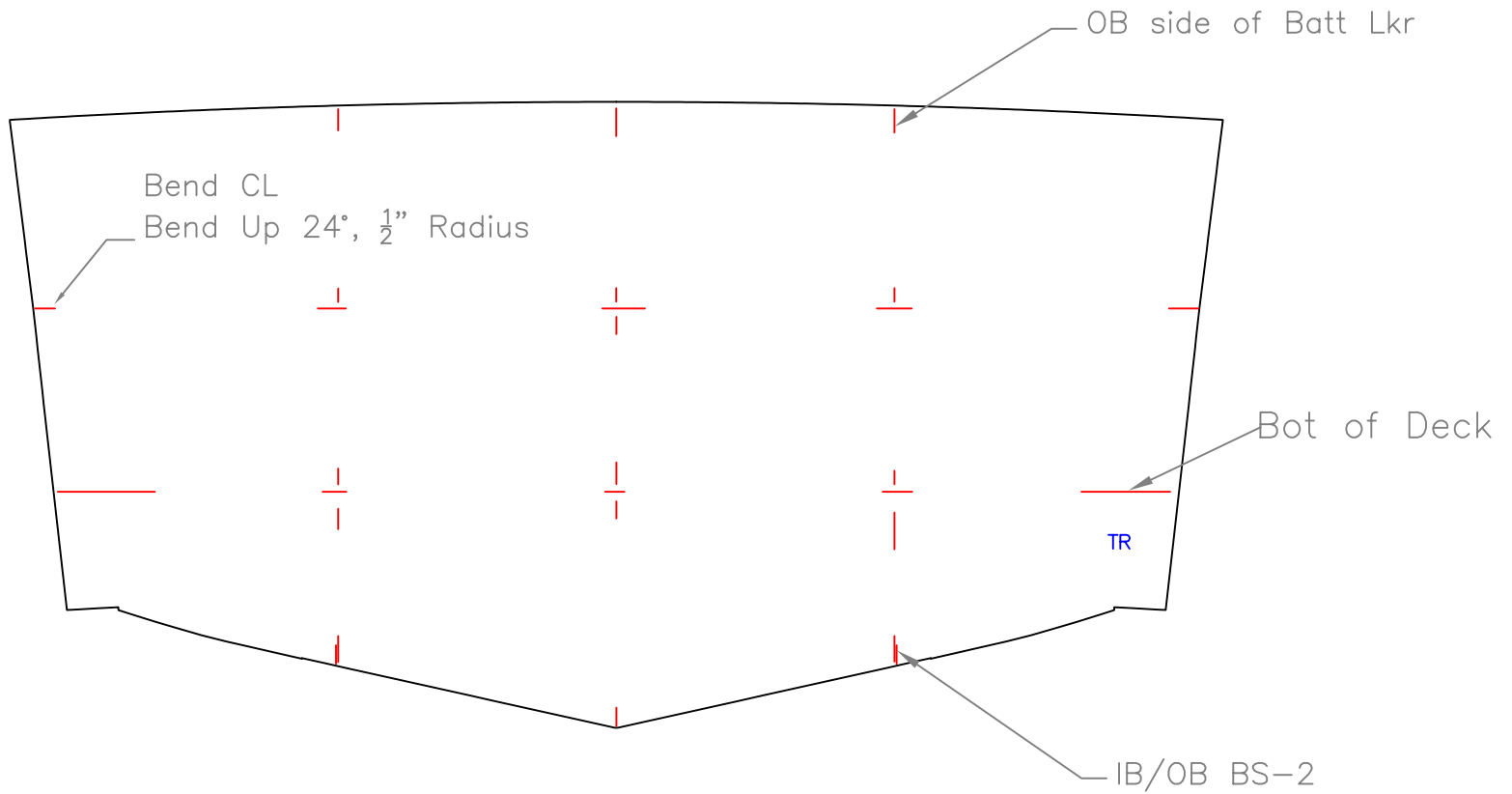
Response Marine, Inc.	#317, Krecak 2895
FRAME DIMENSIONS	Response Marine, Inc.
	9/26/08

Inches- sixteenths				
A	B	C	D	E

F1	
F2	
F3	
F4	
F5	
F6	
F7	
F8	

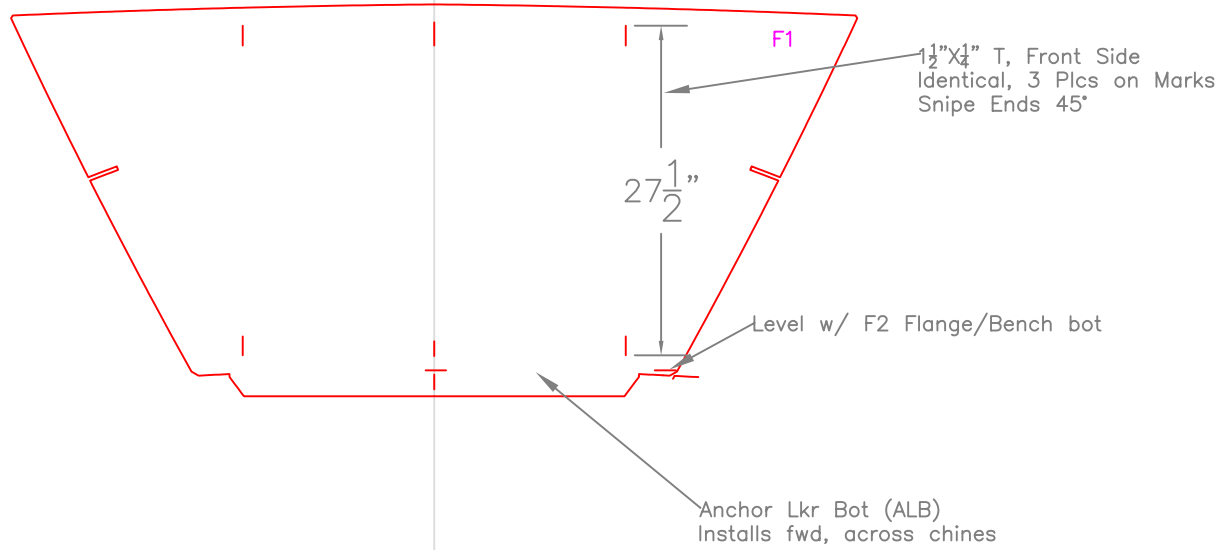
FRAME DIMENSIONS		
KRECACK 2895		
SCALE NONE	DES/DWN WAL	DATE 9/26/08
Response Marine, Inc.		SHEET
Newburyport, MA www.responsemarine.com		DWG NO. 317-F-R

REV.	DESCRIPTION



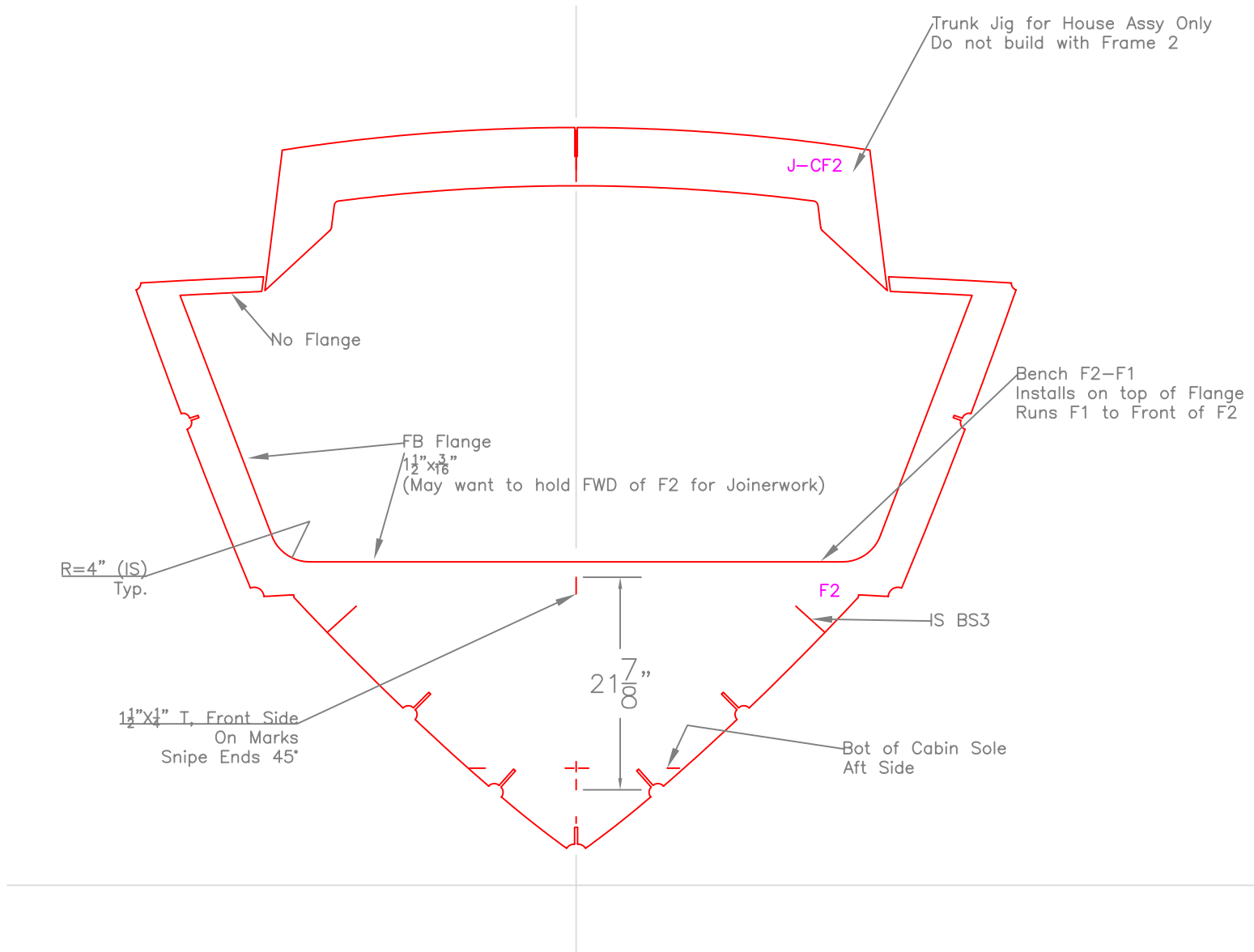
TRANSOM		
KREACK 2895		
SCALE 3/4" = 1'	DES/DWN WAL	DATE 9/27/08
Response Marine, Inc.		SHEET
Newburyport, MA www.responsemarine.com		DWG NO. 317-F-T

REV.	DESCRIPTION



FRAME 1		
KREACK 2895		
SCALE 3/4" = 1'	DES/DWN WAL	DATE 9/24/08
Response Marine, Inc.		SHEET
Newburyport, MA www.responsemarine.com		DWG NO. 317-F-1

REV.	DESCRIPTION



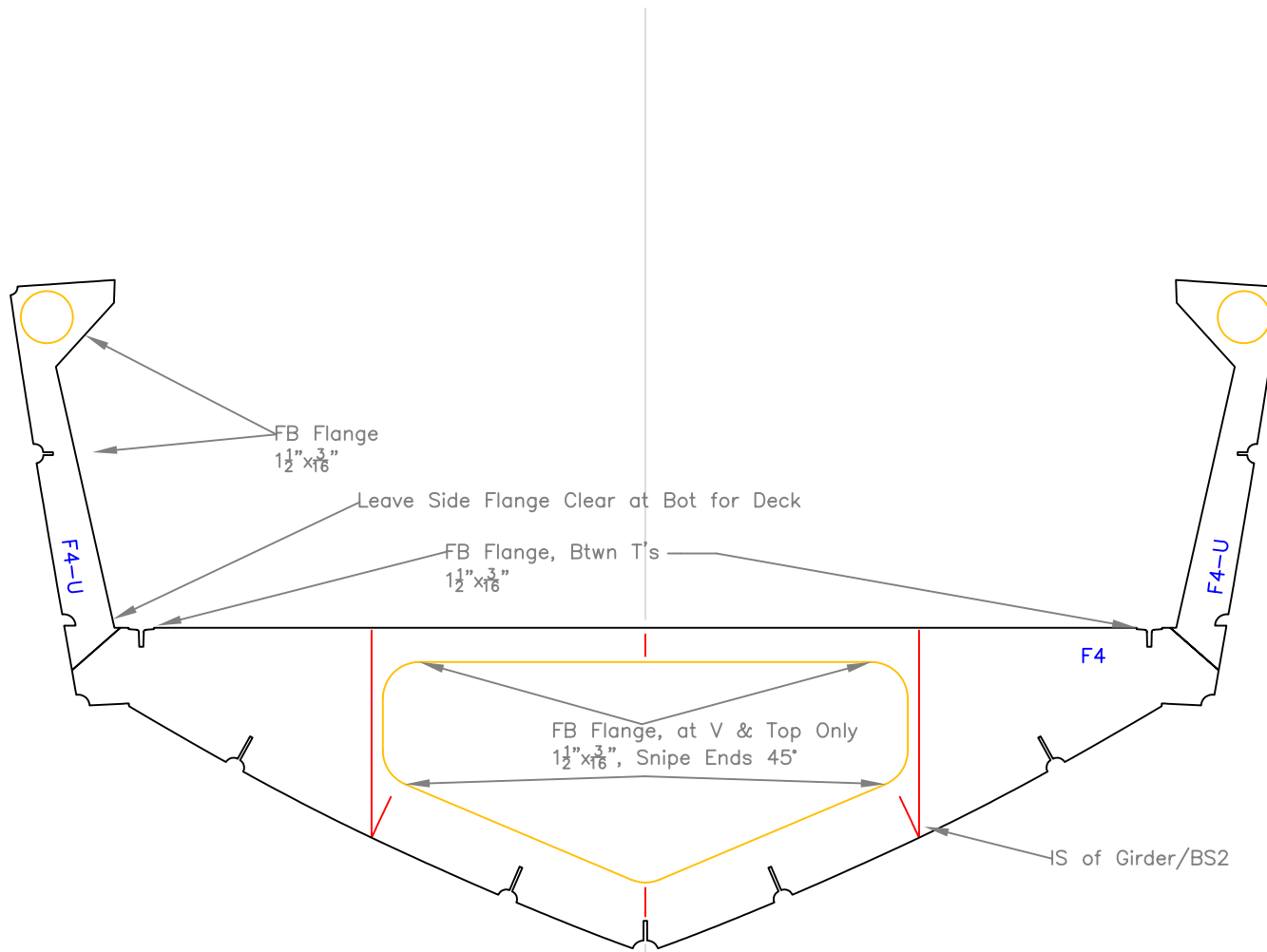
FRAME 2

KRECAK 2895

SCALE 3/4" = 1'	DES/DWN WAL	DATE 9/24/08
--------------------	----------------	-----------------

Response Marine, Inc.		SHEET
Newburyport, MA www.responsemarine.com		DWG NO. 317-F-2

REV.	DESCRIPTION



FRAME 4

KRECAK 2895

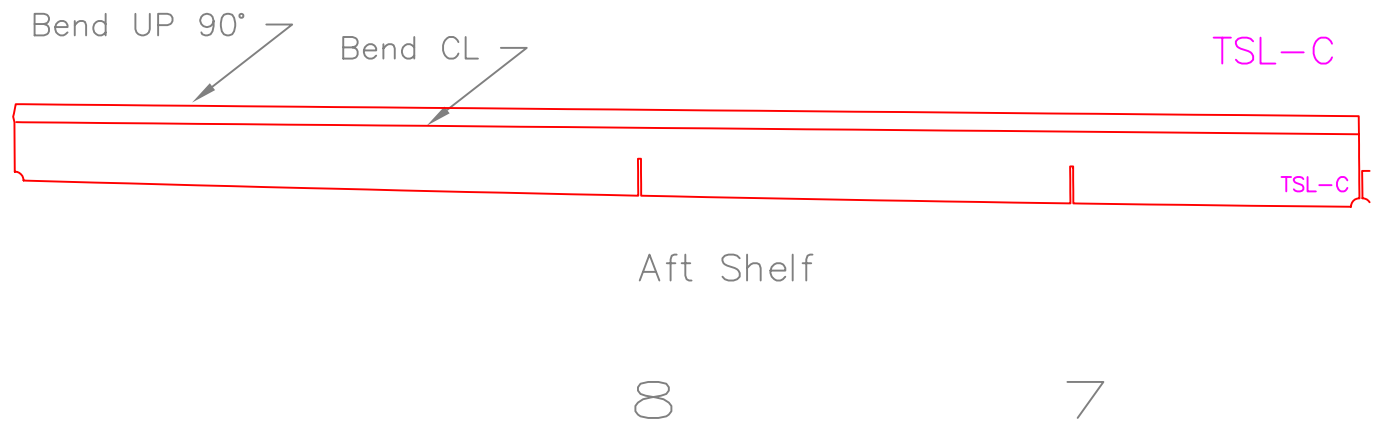
SCALE 3/4" = 1'	DES/DWN WAL	DATE 9/24/08
--------------------	----------------	-----------------

Response Marine, Inc.

Newburyport, MA www.responsemarine.com

SHEET
DWG NO. 317-F-4

REV.	DESCRIPTION



Notes:

- 1) Parts are "TSL-C", 2 total, Mirror Images
- 2) One Bend on Mark, 1/2" Inside Radius

Bending-Cockpit Shelves		
KRECAK 2895		
SCALE 3/4" = 1'	DES/DWN WAL	DATE 9/27/08
Response Marine, Inc.		SHEET
Newburyport, MA www.responsemarine.com		DWG NO. 317-B-1

REV.	DESCRIPTION