

Response Marine # 620: Drawing List

9/29/21

#620 -1	Outboard Profile & Plan	9/29/21
-2	Inboard Profile & Arrangement	9/29/21
-3	End Views	9/29/21
-4	Deck Hatches & Rigging Runs	9/29/21
#620 -2-1	Frame Locations	9/29/21
-2-2	Keel Layout	9/29/21
-2-3	Bottom & Chine Layout	9/29/21
-2-4	Bottom Stiffeners-Forward	9/29/21
-2-5	Topside Plate & Stringers	9/29/21
-2-6	Bow	9/29/21
-2-7A	Transom	9/29/21
-2-7B	False Transom	9/29/21
-2-8	Side Decks	9/29/21
-2-9	Foredeck	9/29/21
-2-10	Cockpit Deck	9/29/21
-2-11	Engine Deck	9/29/21
-2-12	Deck Soft Patch- DP-6	9/29/21
-2-13	Anchor Locker Bottom	9/29/21
-2-14	Transom Bhd	9/29/21
-2-15	Dive Door Parts & Marks	9/29/21
-2-16	Dive Door Sections	9/29/21
-2-17	Lifting Eyes	9/29/21
-3-1	Fuel Tank- 80 gal	9/29/21
-3-2	Ullage Tank	9/29/21
-3-3	Ullage Tank Mounting	9/29/21
-4-1	Console- Port Side	9/29/21
-4-2	Console- Stbd Side, Helm	9/29/21
-7-1	Hatch Doors	9/29/21
-B-1	"B-1" Flange Forming	9/29/21
-C-1	Hull Joint Details- Bottom	9/29/21
-C-2	Hull Joint Details- Bow	9/29/21
-F-1	Frame 1	9/29/21
-F-2	Frame 2	9/29/21
-F-3	Frame 3, WTBHD	9/29/21
-F-3D	Assembly Dimensions- Frame 3, WTBHD	9/29/21
-F-4	Frame 4	9/29/21
-F-4D	Assembly Dimensions- Frame 4	9/29/21
-F-5	Frame 5	9/29/21
-F-6	Frame 6, WTBHD	9/29/21
-F-6D	Assembly Dimensions- Frame 6, WTBHD	9/29/21
-F-7	Frame 7	9/29/21
-F-8	Frame 8	9/29/21

Response Marine, Inc.

NC Cut Parts

Design #620, 25'11' Cathedral for Michels Corp.

File: RMIDes\Reconcraft\576 24' Cathedral\Deriv\620

Revised: 9/30/21

Print Date: 9/30/21

1/8" Parts 5052

<u>Part #</u>	<u>Pieces</u>	<u>Description</u>	<u>Bend</u> (all bends on 1/8" 5052 are 1/4" IS Radius)
C-PE	1	Console, Port glovebox wall	
H-C	2	Hatch- Consoles inboard side	(4) each
H-TA	1	Hatch Door- Transom Bhd center	(4)
H-TB	2	Hatch Door- Transom Bhd outboard	(4) each
T-UA	1	Ullage Tank, Top & ends	(2)
T-UB	1	Ullage Tank, Bottom & sides	(2)
	8	Total Pieces (3/16", 5052)	

3/16" Parts, 5052 TREAD PLATE

<u>Part #</u>	<u>Pieces</u>	<u>Description</u>	<u>Bend</u>
ALB-P	1	Anchor Locker Bottom, Port	
ALB-S	1	Anchor Locker Bottom, Stbd	
D-AP	1	Deck Body, F1 to F3, Port	
D-AS	1	Deck Body, F1 to F3, Stbd	
D-BP	1	Deck Body, F3 to F6, Port	
D-BS	1	Deck Body, F3 to F6, Stbd	
D-CP	1	Deck Body, F6 to FTran, Port	
D-CS	1	Deck Body, F6 to FTran, Stbd	
DD-CS	1	Dive Door Coaming Step	
D-E	1	Deck at Engine Platform, Center	
D-EP	1	Deck at Engine Platform, Port	
D-ES	1	Deck at Engine Platform, Stbd	
DM-P	1	Deck Margin, F3-FTran, Port	
DM-S	1	Deck Margin, F3-FTran, Stbd	
DP-6	1	Deck Plate Soft Patch #6	
FD	1	Foredeck	
SD-P	1	Side Decks, Port	
SD-S	1	Side Decks, Stbd	
TR-D	1	Transom Deck	
	19	Total Pieces (3/16", 5052 TREAD PLATE)	

3/16" Parts 5052

<u>Part #</u>	<u>Pieces</u>	<u>Description</u>	<u>Bend</u> (all bends on 3/16" 5052 are 1/4" IS Radius)
C-PA	1	Console, Port inboard Side	(2)
C-PB	1	Console, Port top	(1)
C-PC	1	Console, Port aft lower	(1)
C-PD	1	Console, Port outboard side	
C-SA	1	Console, Stbd inboard Side	(2)
C-SB	1	Console, Stbd top	(1)
C-SC	1	Console, Stbd aft faces	(2)

C-SD	1	Console, Stbd outboard side	
ST-AP	1	Scupper Tube, Tran Bhd to False Transom, Port	(1)
ST-AS	1	Scupper Tube, Tran Bhd to False Transom, Stbd	(1)
T-A	1	Tank Body	(4)
T-BL	1	Tank Baffle, Longitudinal	
T-BT	2	Tank Baffle, Transverse	
T-C	2	Tank End	
T-D	1	Tank Top	

17 Total Pieces (3/16", 5052)

3/16" Parts 5086 Marine

<u>Part #</u>	<u>Pieces</u>	<u>Description</u>	<u>Bend</u>
ALB-OB	2	Anchor Locker Bottom, Fillers OB at Chines	
BG-P	1	Bow Girder, Port	B-1 Flange, per Dwg #620-B-1
BG-S	1	Bow Girder, Stbd	B-1 Flange, per Dwg #620-B-1
BOW	1	Bow Face, (above Bow Slant)	(2) 1/2" radius
BS-1AP	1	Bow Stiffener #1, fwd of F1, Port	B-1 Flange, per Dwg #620-B-1
BS-1AS	1	Bow Stiffener #1, fwd of F1, Stbd	B-1 Flange, per Dwg #620-B-1
BS-2AP	1	Bow Stiffener #2, fwd of F1, Port	B-1 Flange, per Dwg #620-B-1
BS-2AS	1	Bow Stiffener #2, fwd of F1, Stbd	B-1 Flange, per Dwg #620-B-1
DD-FA	1	Dive Door Frame, Fwd	B-1 Flange, per Dwg #620-B-1
DD-FB	1	Dive Door Frame, Aft	B-1 Flange, per Dwg #620-B-1
DD-HF	1	Dive Door Hull Frame Aft	B-1 Flange, per Dwg #620-B-1
DD-HT	1	Dive Door Hull Threshold	B-1 Flange, per Dwg #620-B-1
DP-6R	1	Deck Plate Soft Patch Ring #6	
F1	1	Frame 1	
F2	1	Frame 2	B-1 Flange, per Dwg #620-B-1
F3	1	Frame 3, WTBHD	B-1 Flange, per Dwg #620-B-1
F3-P	1	Frame 3, Upper, Port	B-1 Flange, per Dwg #620-B-1
F3-S	1	Frame 3, Upper, Stbd	B-1 Flange, per Dwg #620-B-1
F4	1	Frame 4	B-1 Flange, per Dwg #620-B-1
F4-P	1	Frame 4, Upper Port	B-1 Flange, per Dwg #620-B-1
F4-S	1	Frame 4, Upper Stbd	B-1 Flange, per Dwg #620-B-1
F5	1	Frame 5	B-1 Flange, per Dwg #620-B-1
F6	1	Frame 6	B-1 Flange, per Dwg #620-B-1
F6-P	1	Frame 6, Upper, Port	B-1 Flange, per Dwg #620-B-1
F6-S	1	Frame 6, Upper, Stbd	B-1 Flange, per Dwg #620-B-1
F7	1	Frame 7	B-1 Flange, per Dwg #620-B-1
F8	1	Frame 8	B-1 Flange, per Dwg #620-B-1
FDC	1	Foredeck Coaming	
FTRAN	1	False Transom	(1) 1/2" radius
FTS-P	1	False Transom Stiffener, Port	B-1 Flange, per Dwg #620-B-1
FTS-S	1	False Transom Stiffener, Stbd	B-1 Flange, per Dwg #620-B-1
ST-P	1	Scupper Tube Wall/Engine Deck Stiff, Port	B-1 Flange, per Dwg #620-B-1
ST-S	1	Scupper Tube Wall/Engine Deck Stiff, Stbd	B-1 Flange, per Dwg #620-B-1
TB-P	1	Transom Bulkhead, Stbd	
TB-S	1	Transom Bulkhead, Port	
TDC	1	Transom Deck Coaming	
TK-P	1	Transom Knee, Port	B-1 Flange, per Dwg #620-B-1
TK-S	1	Transom Knee, Stbd	B-1 Flange, per Dwg #620-B-1
TSL-AP	1	Topsides Stringer, Chine to F3, Port	B-1 Flange, per Dwg #620-B-1
TSL-AS	1	Topsides Stringer, Chine to F4, Stbd	B-1 Flange, per Dwg #620-B-1
TSL-BP	1	Topsides Stringer, at Dive Door, Port	B-1 Flange, per Dwg #620-B-1
TSL-BS	1	Topsides Stringer, F4- to F6, Stbd	B-1 Flange, per Dwg #620-B-1
TSL-CP	1	Topsides Stringer, F4- to F6, Port	B-1 Flange, per Dwg #620-B-1
TSL-CS	1	Topsides Stringer, F6 to FTran, Stbd	B-1 Flange, per Dwg #620-B-1
TSL-DP	1	Topsides Stringer, F6 to FTran, Port	B-1 Flange, per Dwg #620-B-1

TS-P	1	Topsides
TS-S	1	Topsides
	48	Total Pieces (3/16", 5086)

1/4" Parts, 5086 Marine

<u>Part #</u>	<u>Pieces</u>	<u>Description</u>
BOT-P	1	Bottom Plate, Port
BOT-S	1	Bottom Plate, Stbd
BS-1P	1	Bottom Longitudinal #1, Port
BS-1S	1	Bottom Longitudinal #1, Stbd
BS-2P	1	Bottom Longitudinal #2, Port
BS-2S	1	Bottom Longitudinal #2, Stbd
BS-3P	1	Bottom Longitudinal #3, Port
BS-3S	1	Bottom Longitudinal #3, Stbd
BS-A	1	Bottom Transverse Stiff fwd of F1, Lower
BS-B	1	Bottom Transverse Stiff fwd of F1, Upper
C-P	1	Chine, Port
C-S	1	Chine, Stbd
DD-DB	1	Dive Door Bottom/Hinge Plate
F8-S	1	Frame 8, Centerline Stiffener, aft side
FDS-1	2	Foredeck Stiffener #1
FDS-2	2	Foredeck Stiffener #2
SDC-AP	1	Side Deck Coaming, Slanted, end at F1, Port
SDC-AS	1	Side Deck Coaming, Slanted, end at F1, Stbd
SDC-BP	1	Side Deck Coaming, Slant to False Transom, Port
SDC-BS	1	Side Deck Coaming, Slant to False Transom, Stbd
TK-A	2	Transom Knee Bridge, BS2-BS3
TR-S	2	Transom, Horizontal Stiffener
TR-WLS	1	Topsides Wing Lip, Stbd.
TS-WLP	1	Topsides Wing Lip, Port
	28	Total Pieces (1/4")

3/8" Parts, 5086 Marine

<u>Part #</u>	<u>Pieces</u>	<u>Description</u>
KA	1	Keel, Fwd
KB	1	Keel, Mid
KC	1	Keel, Aft
TR	1	Transom
TR-LA	2	Transom Lip, Lower Outboard
TR-LB	1	Transom Lip, Upper Center
TR-LE	2	Transom Lip, End of Center, port & stbd
	9	Total Pieces (3/8")
	102	Total Cut Parts

Response Marine, Inc. **Extrusion List**

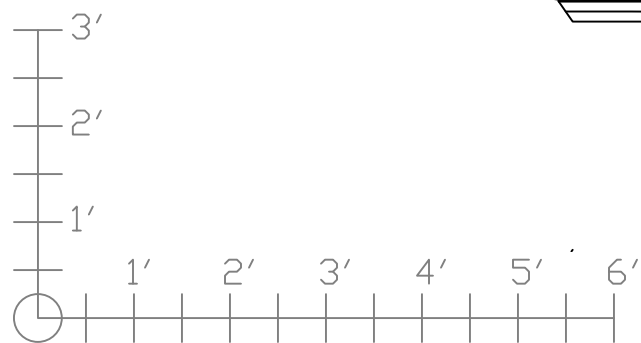
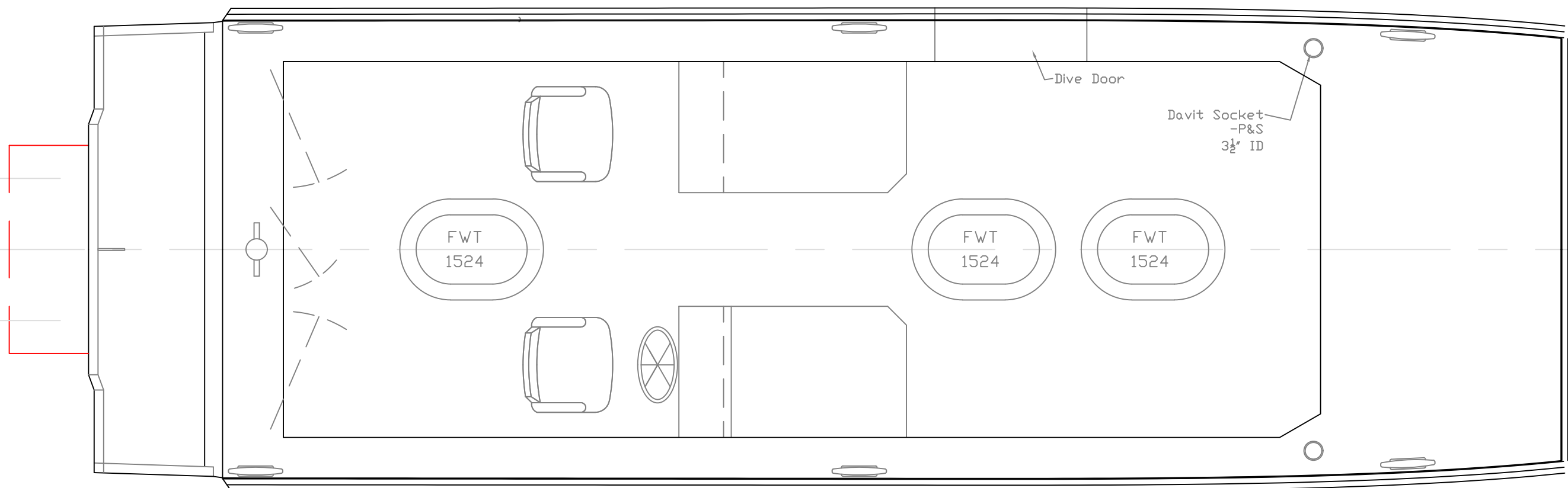
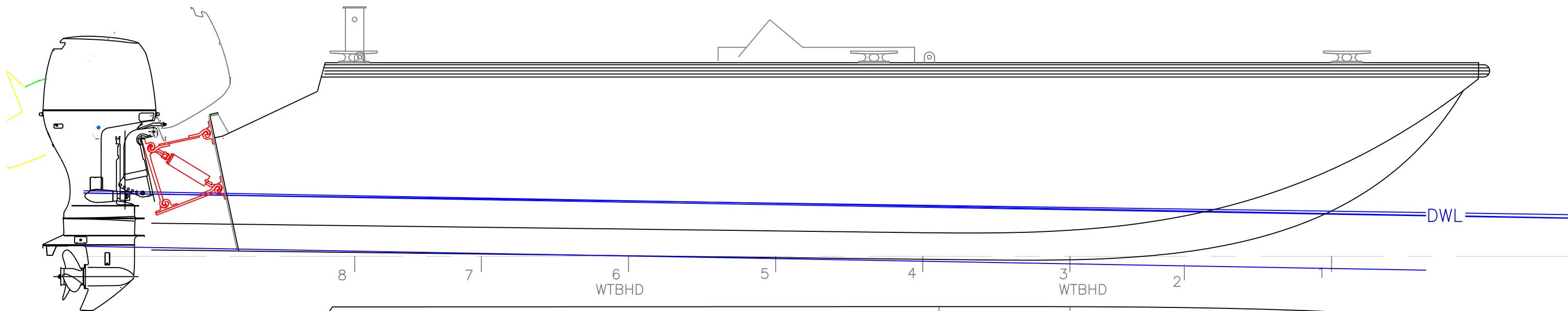
File: RMIDes\Reconcraft\576 24' Cathedral\Deriv\620

Design #620, 25'11" Cathedral for Michels Corp.

Revised: 9/30/21

Print Date: 9/30/21

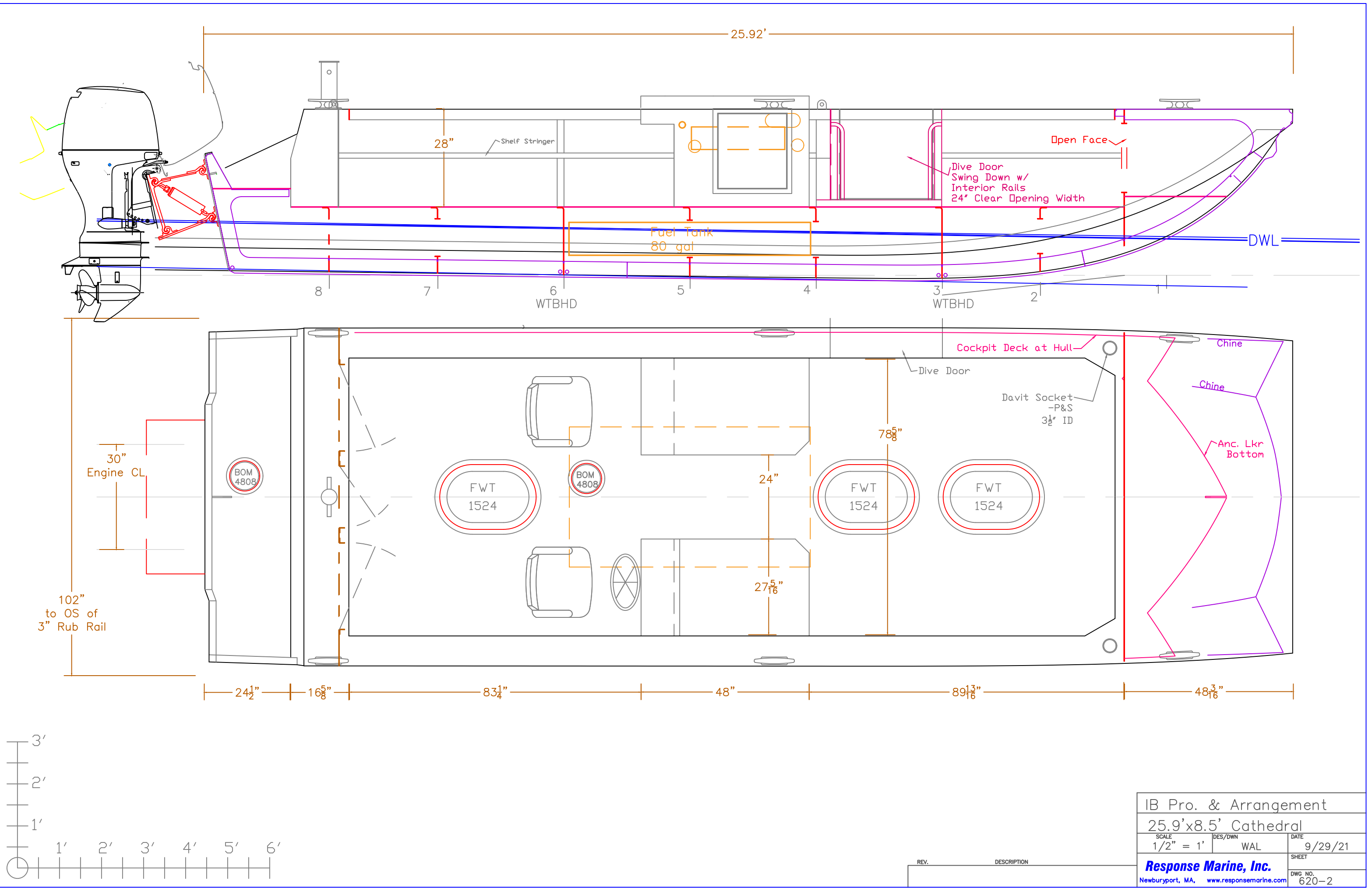
<u>EXTRUSION</u>						
Use	QTY	Description	Alloy	Length	Wt/Ft	Wt
Frame Flanges	4	Flat Bar 1.5x.188"	6061 T6	12	0.332	16
Lift Eyes	1	Flat Bar 2.5" x .500"	6061 T6	12	1.475	18
Tank & Hatch Frames	3	Angle, Am. Std., 1.5x1.5x.188"	6061 T6	25	0.622	47
Rub Rail, <u>Requires Ripping</u>	5	Angle, Am. Std., 1x1x.250"	6061 T6	25	0.622	78
Deck	7	Sq. Tube 1.5 x .188"	6061 T6	24	1.160	195
Fuel Tank Fill	1	Round Tube 1.5" OD x .125" wall	6061 T6	12	0.635	8 Only need ~6"
Dive Door Rails	1	Pipe, .75" sch 40	6063	20	0.390	8 Only need ~6'
Collars/Conduit	2	Pipe, 1.5" sch 40	6061 T6	20	0.940	38 Only need ~3'
DD Hinge, possible Rails	1	Pipe, 1" Sch 40	6061 T6	20	0.580	12 Only need ~4'
Collars/Conduit	1	Pipe, 3" Sch 40	6061 T6	20	2.620	52 Only need ~3'
Tow Post	1	Pipe, 4" Sch 40	6061 T6	20	3.73	75 Only need ~6'
Sub Total Extrusion						545



Outboard Profile & Plan
25.9'x8.5' Cathedral

SCALE 1/2" = 1'	DES/DWN WAL	DATE 9/29/21
Response Marine, Inc. Newburyport, MA, www.responsemarine.com		SHEET 620-1

REV.	DESCRIPTION

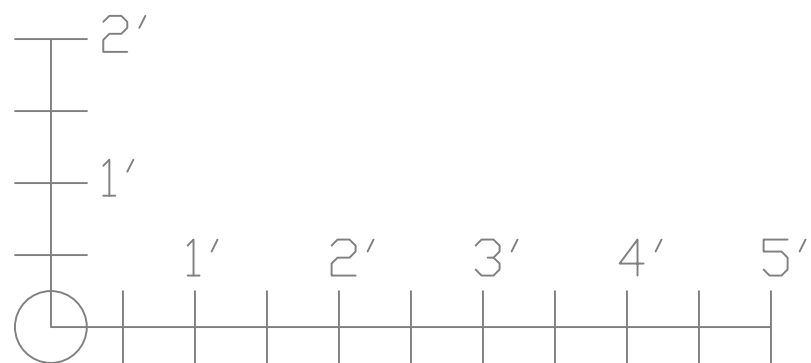
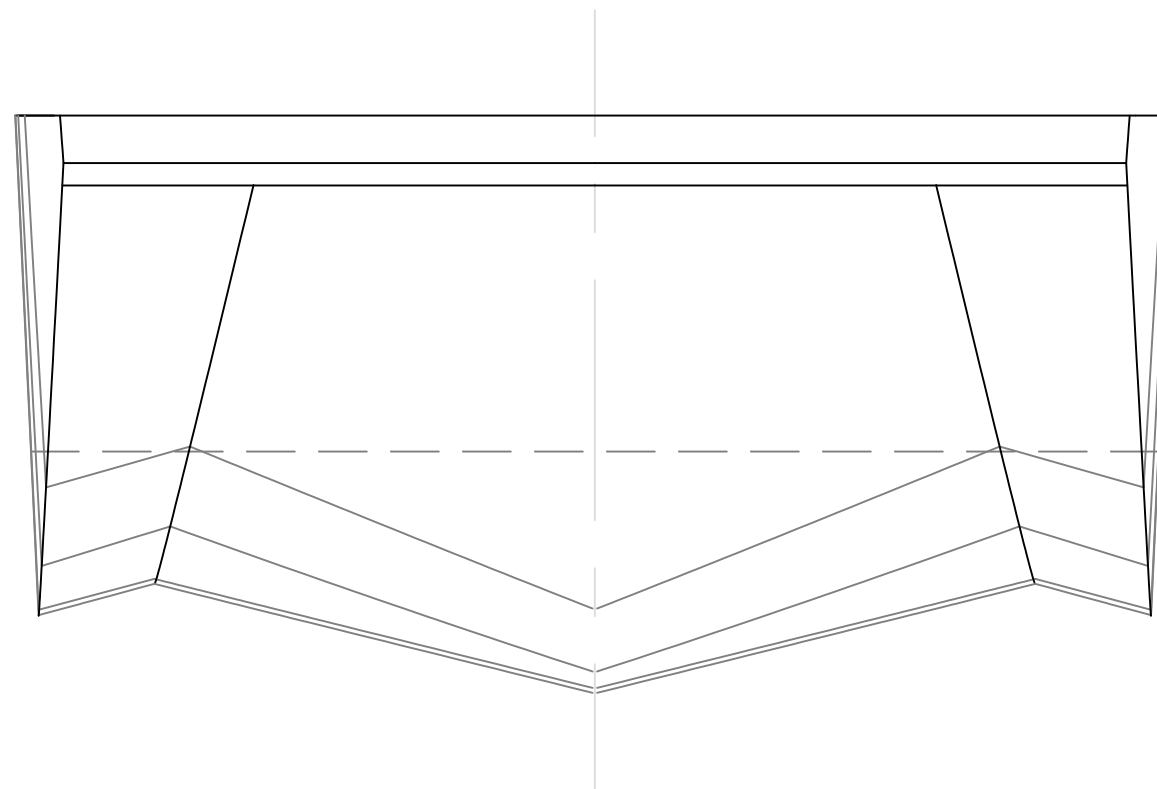
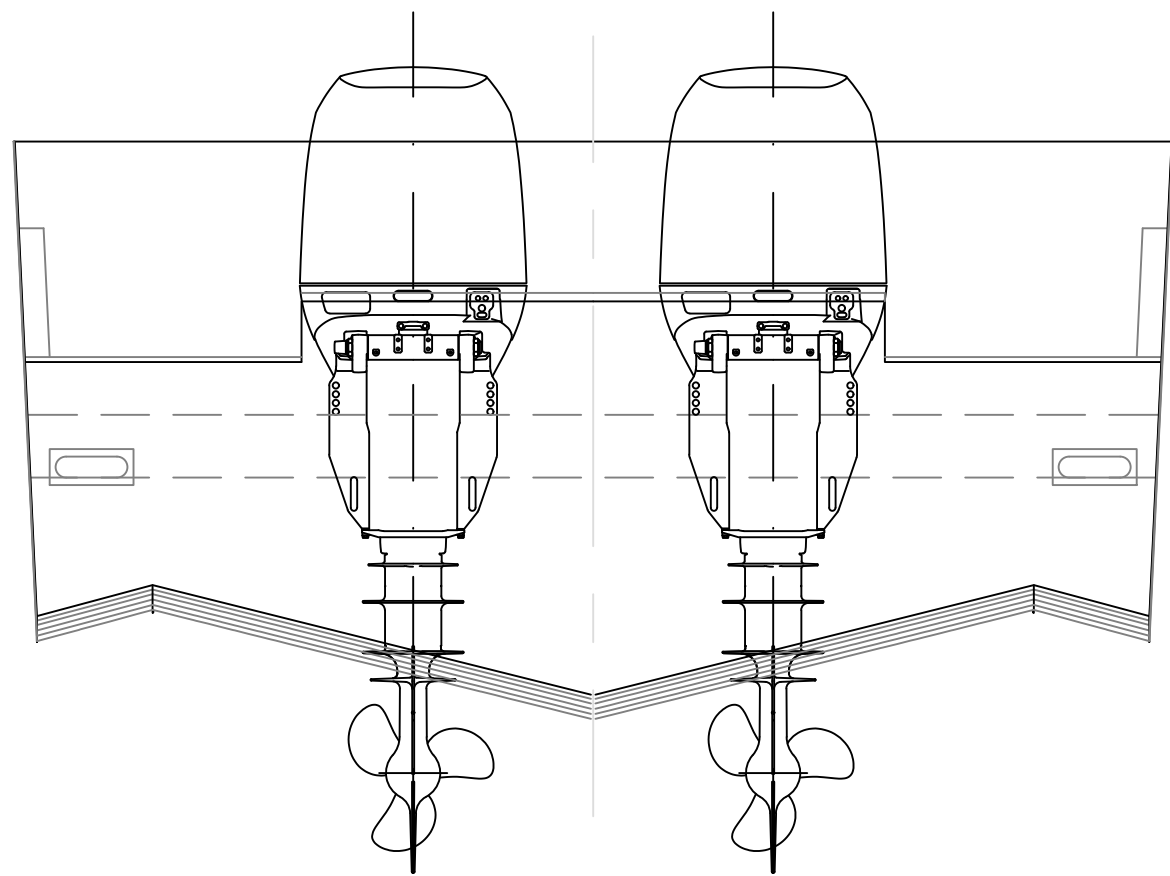


IB Pro. & Arrangement
25.9'x8.5' Cathedral

SCALE 1/2" = 1'	DES/DWN WAL	DATE 9/29/21
--------------------	----------------	-----------------

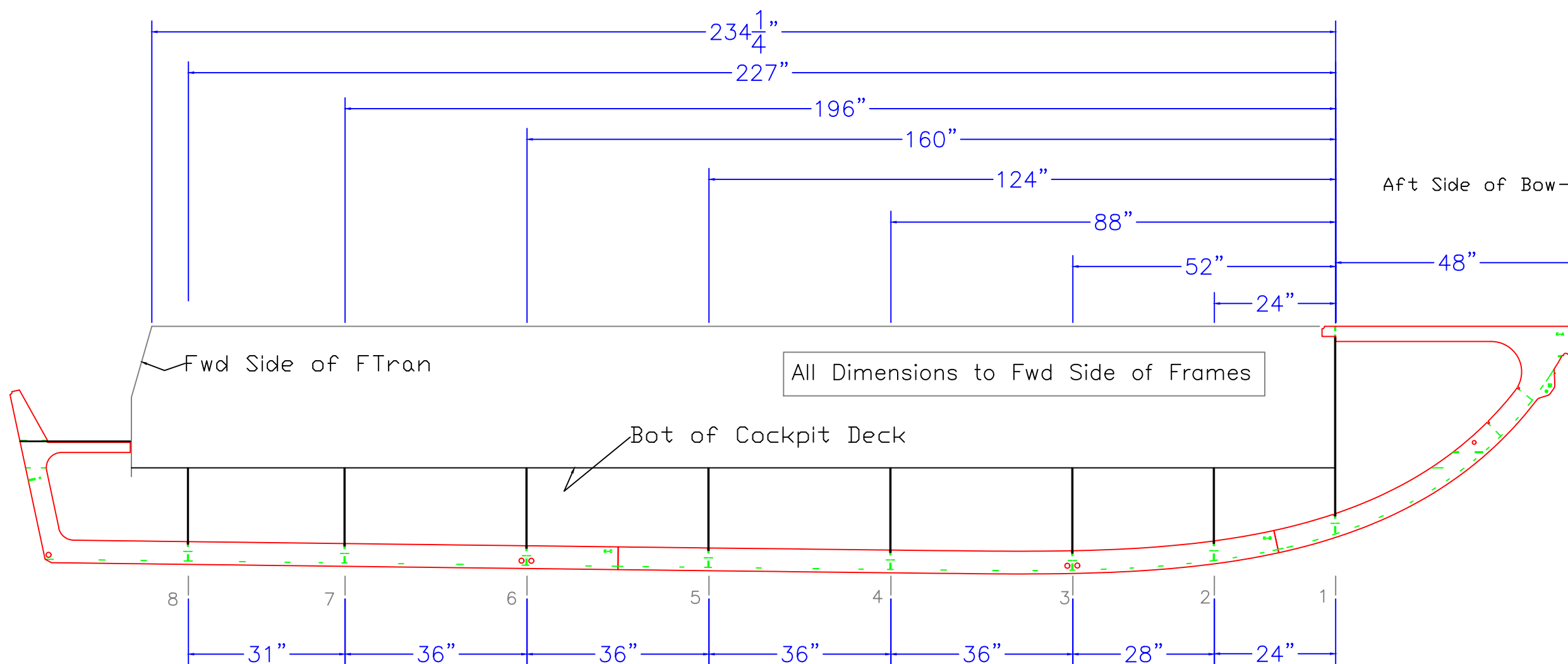
SHEET	
Response Marine, Inc. Newburyport, MA, www.responsemarine.com	
DWG. NO. 620-2	

REV.	DESCRIPTION
------	-------------



REV.	DESCRIPTION

End Views		
25.9'x8.5' Cathedral		
SCALE 3/4" = 1'	DES/DWN WAL	DATE 9/29/21
Response Marine, Inc.		SHEET
Newburyport, MA, www.responsemarine.com		DWG. NO. 620-3



This drawing and referenced information represent the intellectual property of Response Marine, Inc. Use, reproduction, or transmittal of drawings and referenced NC part files requires pre-payment of licensing fee to Response Marine, Inc. Construction of each boat and component fabrication are licensed on a per boat basis, and require proof of payment for each unit built, prior to construction. Possession of this drawing and referenced information does not constitute the right to use. Proper boat construction and outfitting requires knowledge and expertise beyond the scope of this, and other, drawings, and this knowledge and expertise is the sole responsibility of the builder.

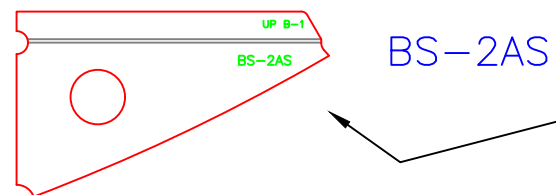
REV.	DESCRIPTION

Frame Locations

25.9'x8.5' Cathedral

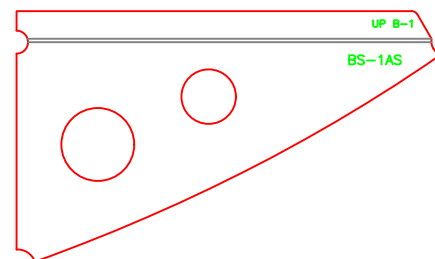
SCALE	DES/DWN	DATE
1/2" = 1'	WAL	9/29/21

Response Marine, Inc.		SHEET
Newburyport, MA,	www.responsemarine.com	DWG. NO. 620-2-1



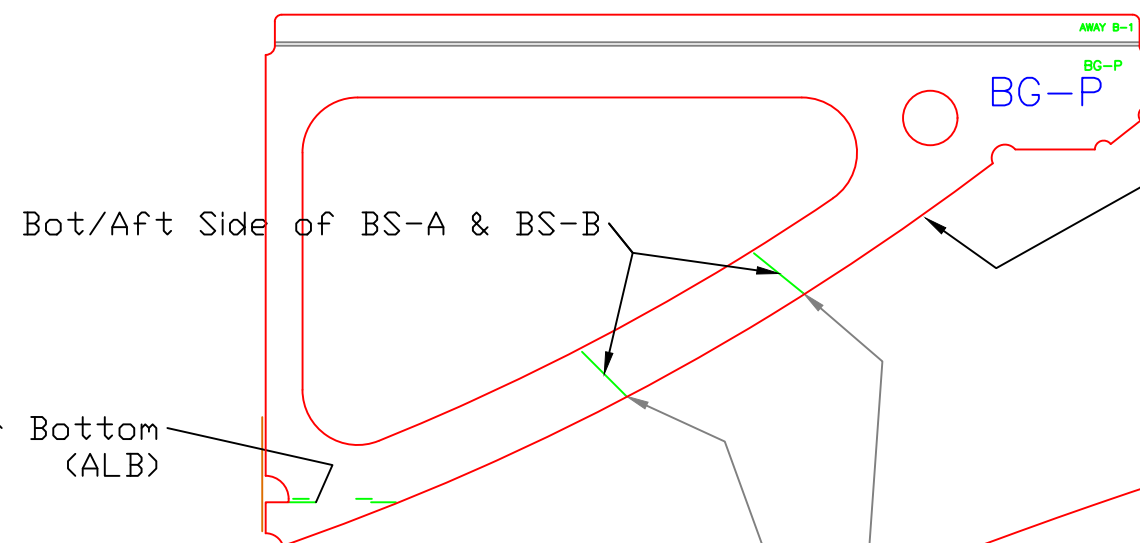
BS-2AS

Install on IB Side
of Bot Pl Marks
Flange QB



BS-1AS

Parts shown before
Forming



Install on QB Side
of Chine Pl Marks
Flange QB

Keel

NOTE:
These parts cut incorrectly.
Need to Hand Cut on CL (not notch edge)
to yield separate Port/Stbd Parts.
Install with newly cut CL edge on Edge of Keel

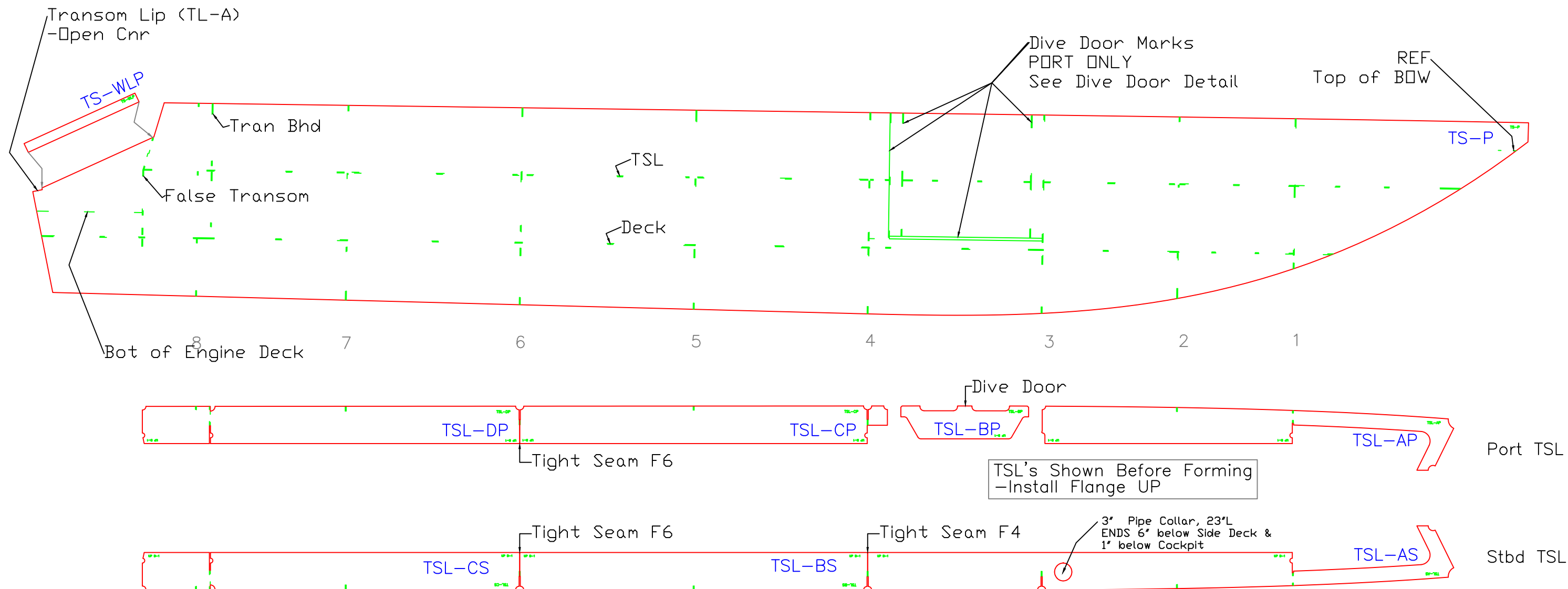
BS-B

BS-A

This drawing and referenced information represent the intellectual property of Response Marine, Inc. Use, reproduction, or transmittal of drawings and referenced NC part files requires pre-payment of licensing fee to Response Marine, Inc. Construction of each boat and component fabrication are licensed on a per boat basis, and require proof of payment for each unit built, prior to construction. Possession of this drawing and referenced information does not constitute the right to use. Proper boat construction and outfitting requires knowledge and expertise beyond the scope of this, and other, drawings, and this knowledge and expertise is the sole responsibility of the builder.

REV. DESCRIPTION
R1, 12/6/21; BS-A/B Note

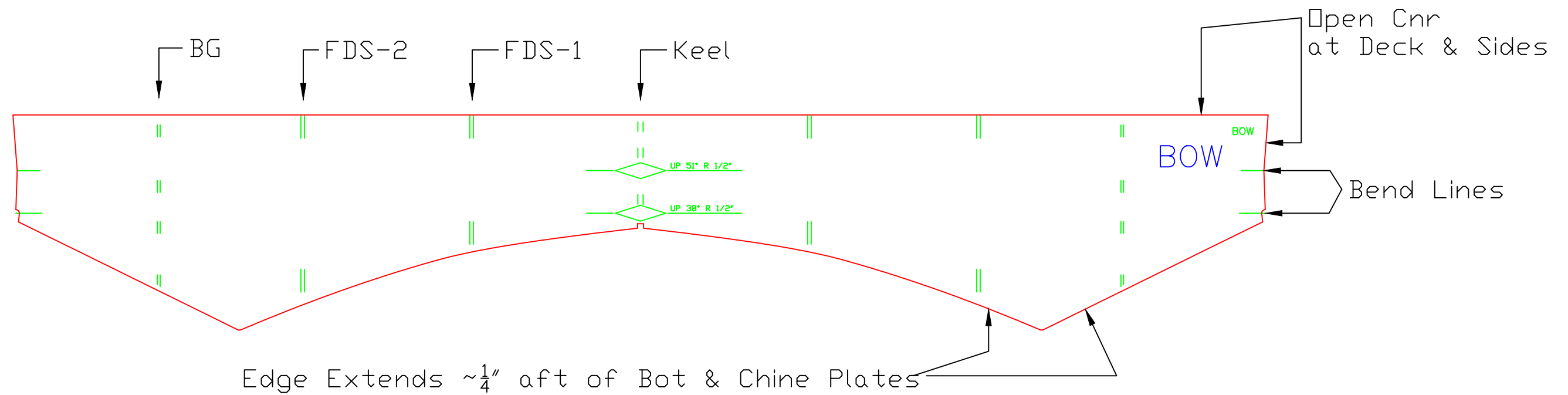
Bottom Stiffeners-Forward			
25.9'x8.5' Cathedral			
SCALE NONE	DES/DWN WAL	DATE 9/29/21	REV 12/6/21
Response Marine, Inc.		DWG. NO. 620-2-4,r1	
Newburyport, MA, www.responsemarine.com			



This drawing and referenced information represent the intellectual property of Response Marine, Inc. Use, reproduction, or transmittal of drawings and referenced NC part files requires pre-payment of licensing fee to Response Marine, Inc. Construction of each boat and component fabrication are licensed on a per boat basis, and require proof of payment for each unit built, prior to construction. Possession of this drawing and referenced information does not constitute the right to use. Proper boat construction and outfitting requires knowledge and expertise beyond the scope of this, and other, drawings, and this knowledge and expertise is the sole responsibility of the builder.

REV.	DESCRIPTION
R1, 12/13/21-	Deck Pipe Length

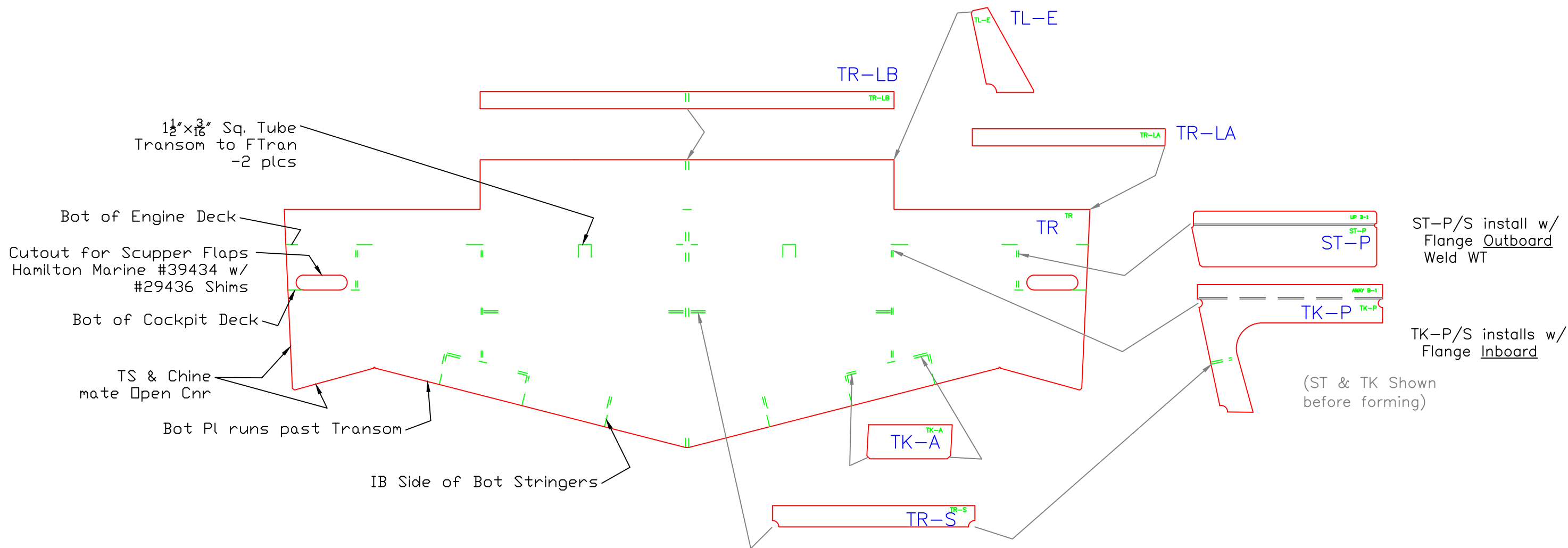
Topside Plate & Stringers		
25.9'x8.5' Cathedral		
SCALE NONE	DES/DWN WAL	DATE 9/29/21
Response Marine, Inc. Newburyport, MA, www.responsemarine.com		REV 12/13/21
		DWG. NO. 620-2-5,r1



This drawing and referenced information represent the intellectual property of Response Marine, Inc. Use, reproduction, or transmittal of drawings and referenced NC part files requires pre-payment of licensing fee to Response Marine, Inc. Construction of each boat and component fabrication are licensed on a per boat basis, and require proof of payment for each unit built, prior to construction. Possession of this drawing and referenced information does not constitute the right to use. Proper boat construction and outfitting requires knowledge and expertise beyond the scope of this, and other, drawings, and this knowledge and expertise is the sole responsibility of the builder.

REV.	DESCRIPTION

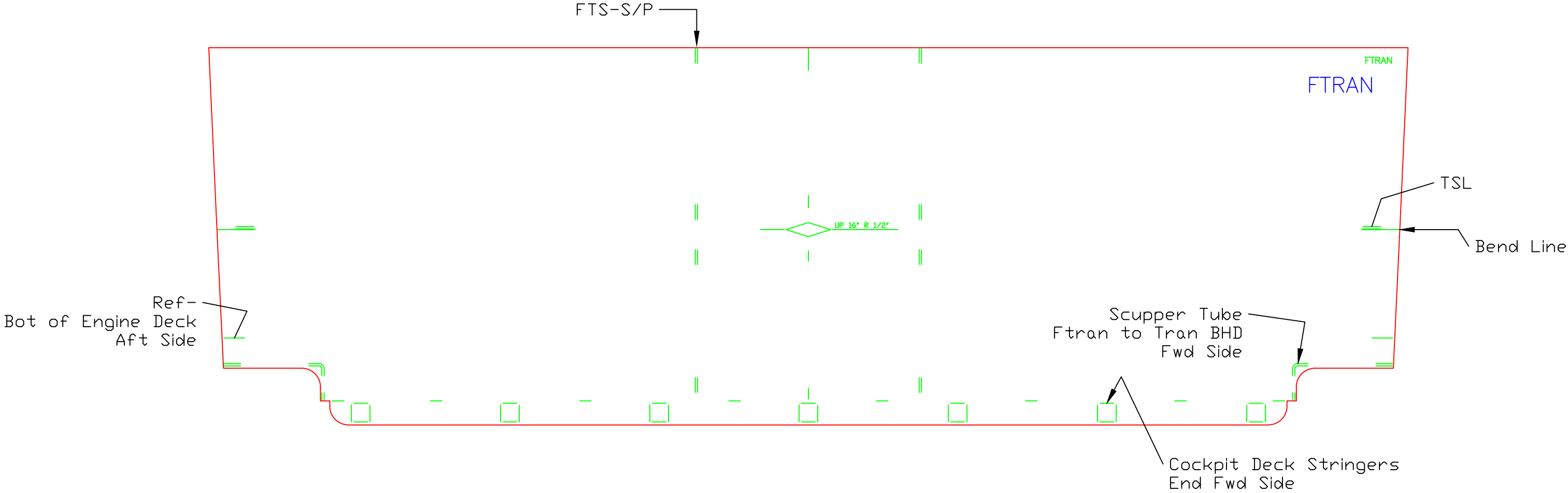
Bow		
25.9'x8.5' Cathedral		
SCALE 1 1/2"=1'	DES/DWN WAL	DATE 9/29/21
Response Marine, Inc. Newburyport, MA, www.responsemarine.com		SHEET DWG. NO. 620-2-6



This drawing and referenced information represent the intellectual property of Response Marine, Inc. Use, reproduction, or transmittal of drawings and referenced NC part files requires pre-payment of licensing fee to Response Marine, Inc. Construction of each boat and component fabrication are licensed on a per boat basis, and require proof of payment for each unit built, prior to construction. Possession of this drawing and referenced information does not constitute the right to use. Proper boat construction and outfitting requires knowledge and expertise beyond the scope of this, and other, drawings, and this knowledge and expertise is the sole responsibility of the builder.

REV.	DESCRIPTION

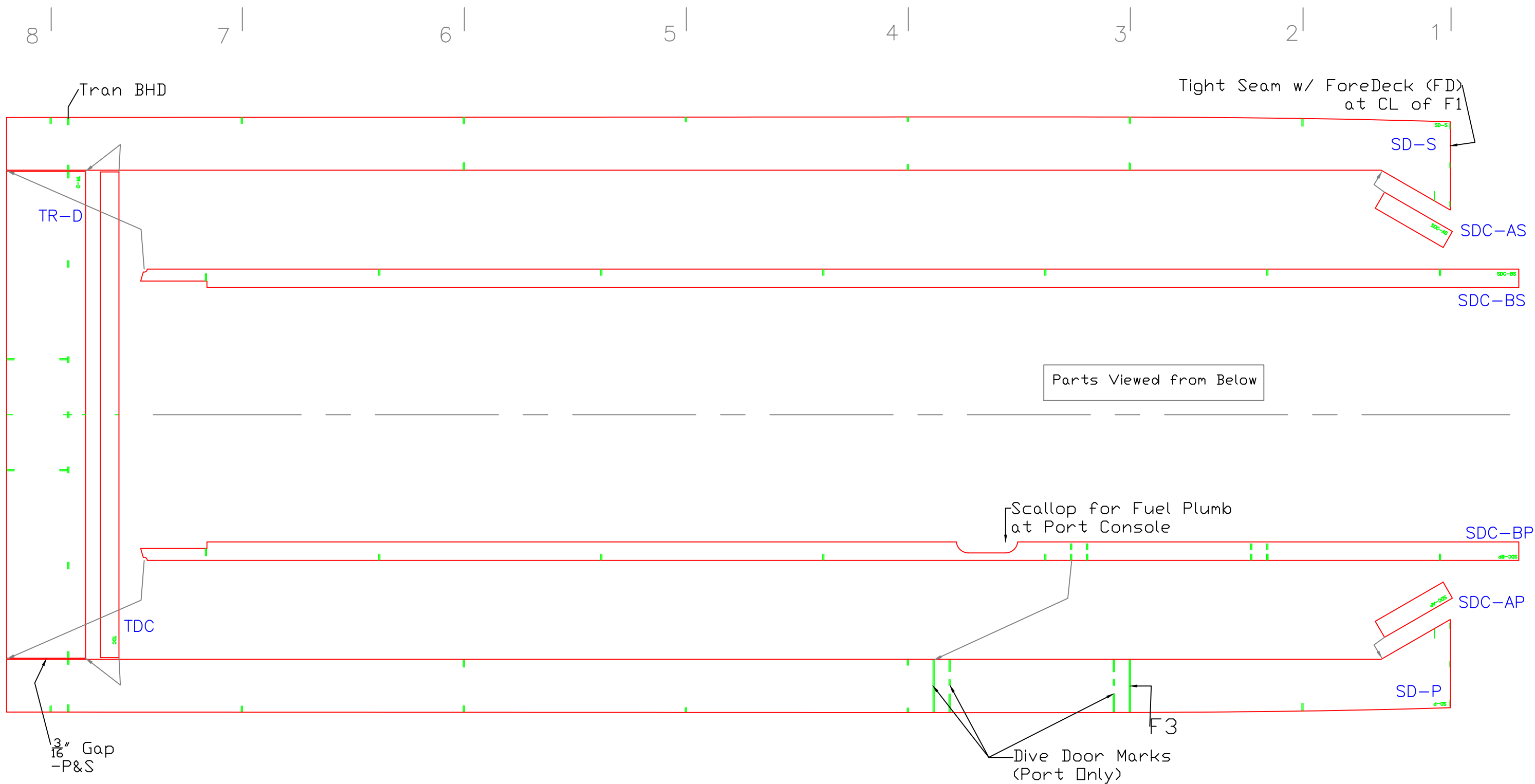
Transom		
25.9'x8.5' Cathedral		
SCALE 1"=1'	DES/DWN WAL	DATE 9/29/21
Response Marine, Inc. Newburyport, MA, www.responsemarine.com		SHEET DWG. NO. 620-2-7A



This drawing and referenced information represent the intellectual property of Response Marine, Inc. Use, reproduction, or transmittal of drawings and referenced NC part files requires pre-payment of licensing fee to Response Marine, Inc. Construction of each boat and component fabrication are licensed on a per boat basis, and require proof of payment for each unit built, prior to construction. Possession of this drawing and referenced information does not constitute the right to use. Proper boat construction and outfitting requires knowledge and expertise beyond the scope of this, and other, drawings, and this knowledge and expertise is the sole responsibility of the builder.

REV.	DESCRIPTION

False Transom		
25.9'x8.5' Cathedral		
SCALE 1 1/2"=1'	DES/DWN WAL	DATE 9/29/21
Response Marine, Inc. Newburyport, MA, www.responsemarine.com		SHEET DWG. NO. 620-2-7B



This drawing and referenced information represent the intellectual property of Response Marine, Inc. Use, reproduction, or transmittal of drawings and referenced NC part files requires pre-payment of licensing fee to Response Marine, Inc. Construction of each boat and component fabrication are licensed on a per boat basis, and require proof of payment for each unit built, prior to construction. Possession of this drawing and referenced information does not constitute the right to use. Proper boat construction and outfitting requires knowledge and expertise beyond the scope of this, and other, drawings, and this knowledge and expertise is the sole responsibility of the builder.

REV.	DESCRIPTION

Side Decks		
25.9'x8.5' Cathedral		
SCALE 3/4"=1'	DES/DWN WAL	DATE 9/29/21
Response Marine, Inc. Newburyport, MA, www.responsemarine.com		SHEET DWG. NO. 620-2-8

Plug Welds to Girder Flange

FD

IB Side of Girder (BG)

FDS-2

FDS-1

Keel

Deck Viewed from Below

FDC

Tight Seam w/ Sidedeck (SD-S/P)
at CL of F1

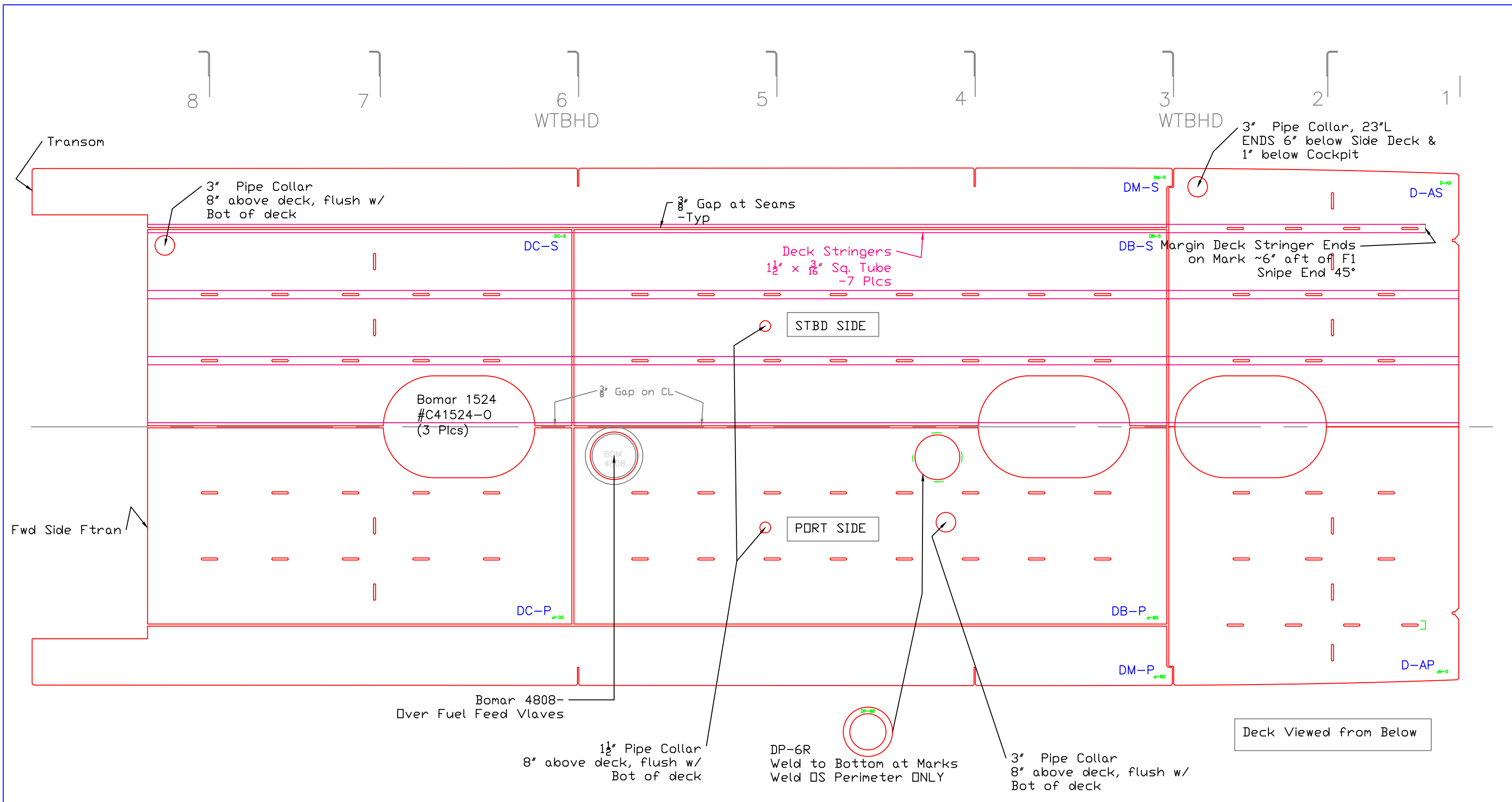
FDS-2

FDS-1

This drawing and referenced information represent the intellectual property of Response Marine, Inc. Use, reproduction, or transmittal of drawings and referenced NC part files requires pre-payment of licensing fee to Response Marine, Inc. Construction of each boat and component fabrication are licensed on a per boat basis, and require proof of payment for each unit built, prior to construction. Possession of this drawing and referenced information does not constitute the right to use. Proper boat construction and outfitting requires knowledge and expertise beyond the scope of this, and other, drawings, and this knowledge and expertise is the sole responsibility of the builder.

REV. DESCRIPTION

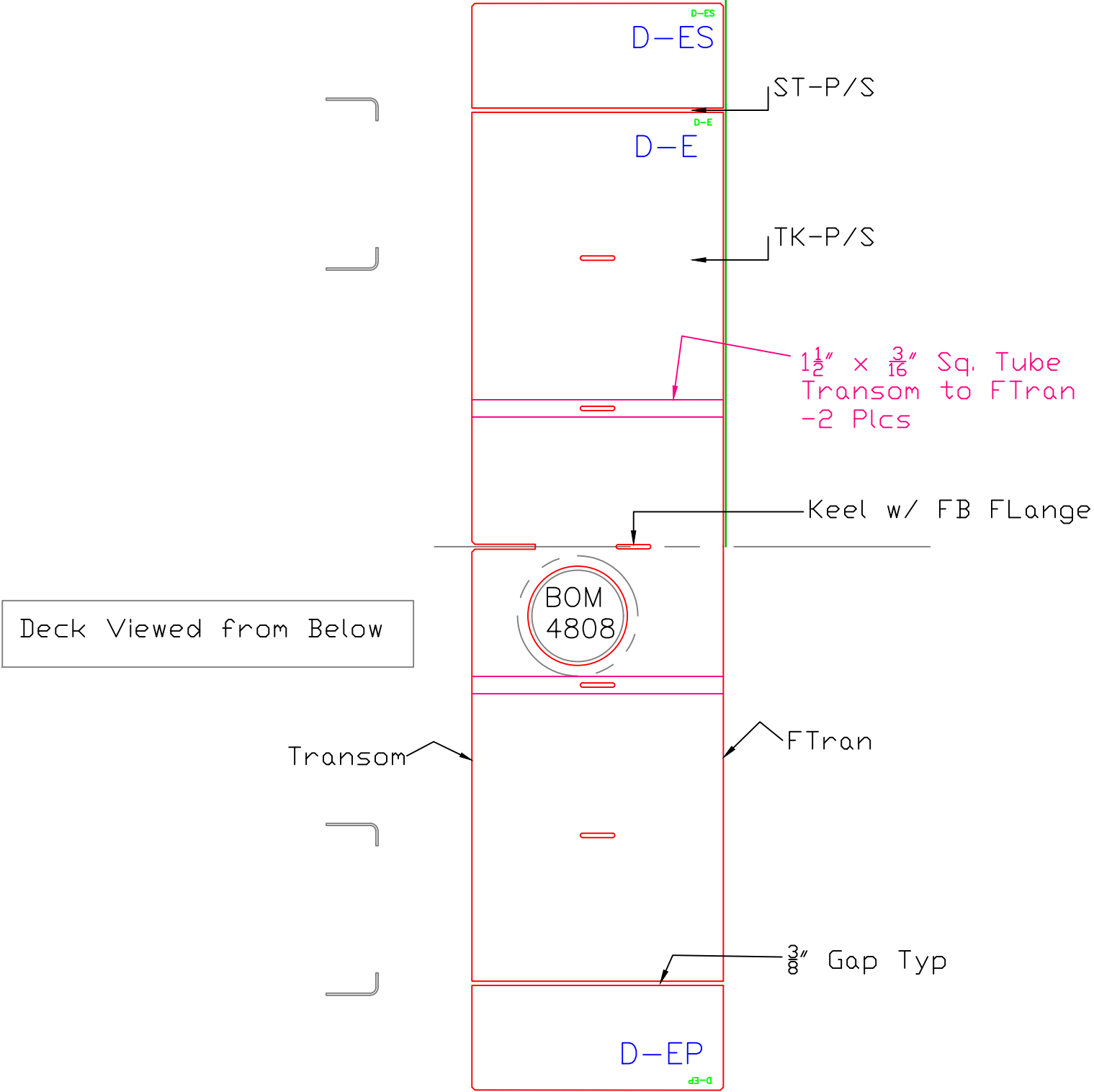
Foredeck		
25.9'x8.5' Cathedral		
SCALE 1"=1'	DES/DWN WAL	DATE 9/29/21
Response Marine, Inc. Newburyport, MA, www.responsemarine.com		SHEET DWG. NO. 620-2-9



This drawing and referenced information represent the intellectual property of Response Marine, Inc. Use, reproduction, or transmittal of drawings and referenced NC part files requires pre-payment of licensing fee to Response Marine, Inc. Construction of each boat and component fabrication are licensed on a per boat basis, and require proof of payment for each unit built, prior to construction. Possession of this drawing and referenced information does not constitute the right to use. Proper boat construction and outfitting requires knowledge and expertise beyond the scope of this, and other, drawings, and this knowledge and expertise is the sole responsibility of the builder.

REV.	DESCRIPTION
R1, 12/13/21-	Deck Pipe Length

Cockpit Deck		
25.9'x8.5' Cathedral		
SCALE NONE	DES/DWN WAL	DATE 9/29/21
Response Marine, Inc.		REV 12/13/21
Newburyport, MA, www.responsemarine.com		DWG. NO. 620-2-10,r1

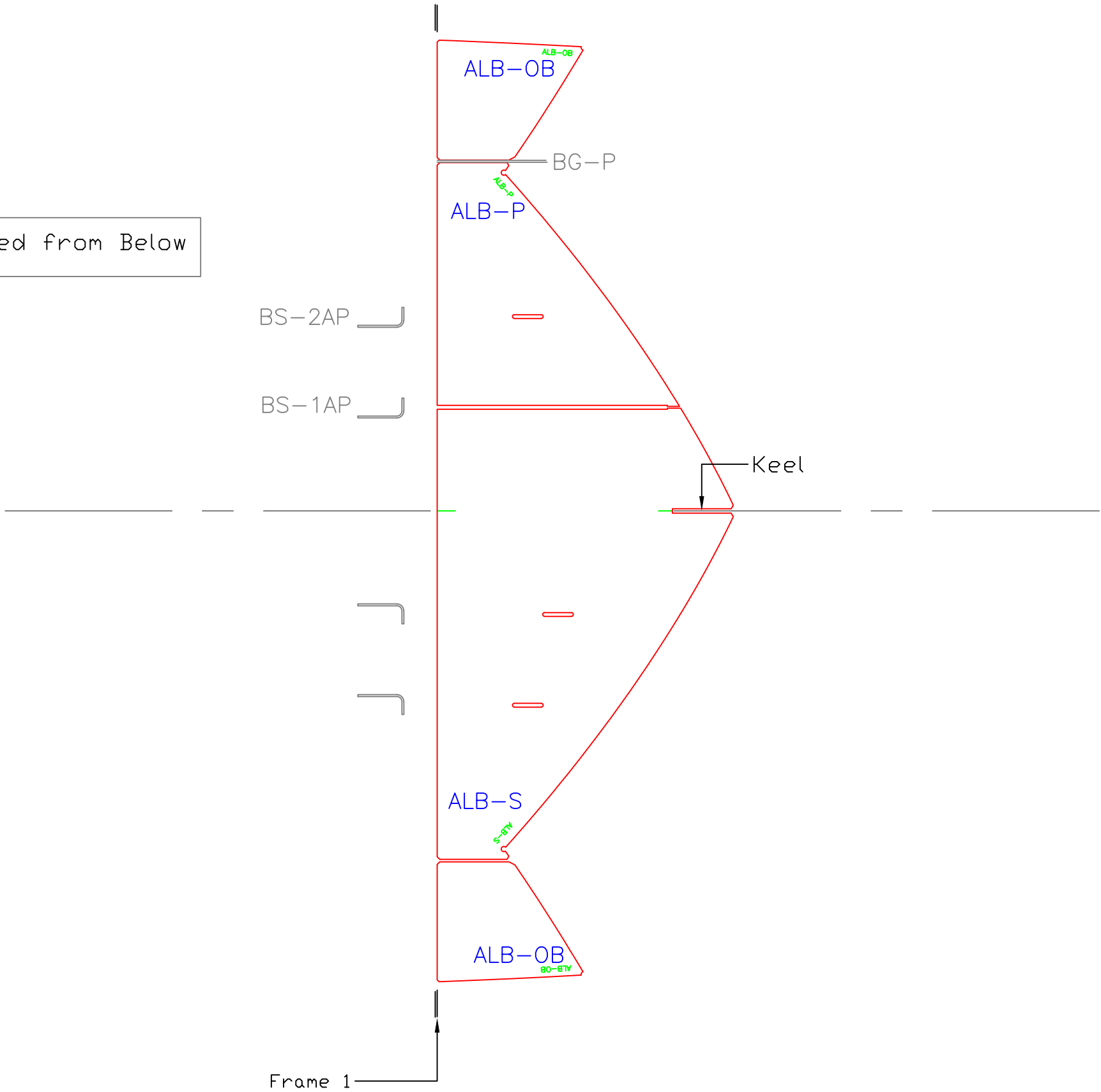


This drawing and referenced information represent the intellectual property of Response Marine, Inc. Use, reproduction, or transmittal of drawings and referenced NC part files requires pre-payment of licensing fee to Response Marine, Inc. Construction of each boat and component fabrication are licensed on a per boat basis, and require proof of payment for each unit built, prior to construction. Possession of this drawing and referenced information does not constitute the right to use. Proper boat construction and outfitting requires knowledge and expertise beyond the scope of this, and other, drawings, and this knowledge and expertise is the sole responsibility of the builder.

REV.	DESCRIPTION

Engine Deck		
25.9'x8.5' Cathedral		
SCALE 1"=1'	DES/DWN WAL	DATE 9/29/21
Response Marine, Inc. Newburyport, MA, www.responsemarine.com		SHEET DWG. NO. 620-2-11

Viewed from Below



This drawing and referenced information represent the intellectual property of Response Marine, Inc. Use, reproduction, or transmittal of drawings and referenced NC part files requires pre-payment of licensing fee to Response Marine, Inc. Construction of each boat and component fabrication are licensed on a per boat basis, and require proof of payment for each unit built, prior to construction. Possession of this drawing and referenced information does not constitute the right to use. Proper boat construction and outfitting requires knowledge and expertise beyond the scope of this, and other, drawings, and this knowledge and expertise is the sole responsibility of the builder.

REV.	DESCRIPTION

Anchor Locker Bottom		
25.9'x8.5' Cathedral		
SCALE 1 1/2"=1'	DES/DWN WAL	DATE 9/29/21
Response Marine, Inc. Newburyport, MA, www.responsemarine.com		SHEET DWG. NO. 620-2-13

L'kg Fwd

3" Pipe Collar x 1 $\frac{1}{2}$ "L
Flush to Bot of Side Deck
-P&S
(After Bhd is in place)

3/16" Gap at Vert Seam

FTS-S

FTS-S

TB-P

TB-P

- Lift Eye Strap
- P&S

TB-S

TB-S

TSL

FTS-S/P
Install w/ Flange OB

/ Hatch Frames & Doors
see Dwg # 620-7-1

ST-AS

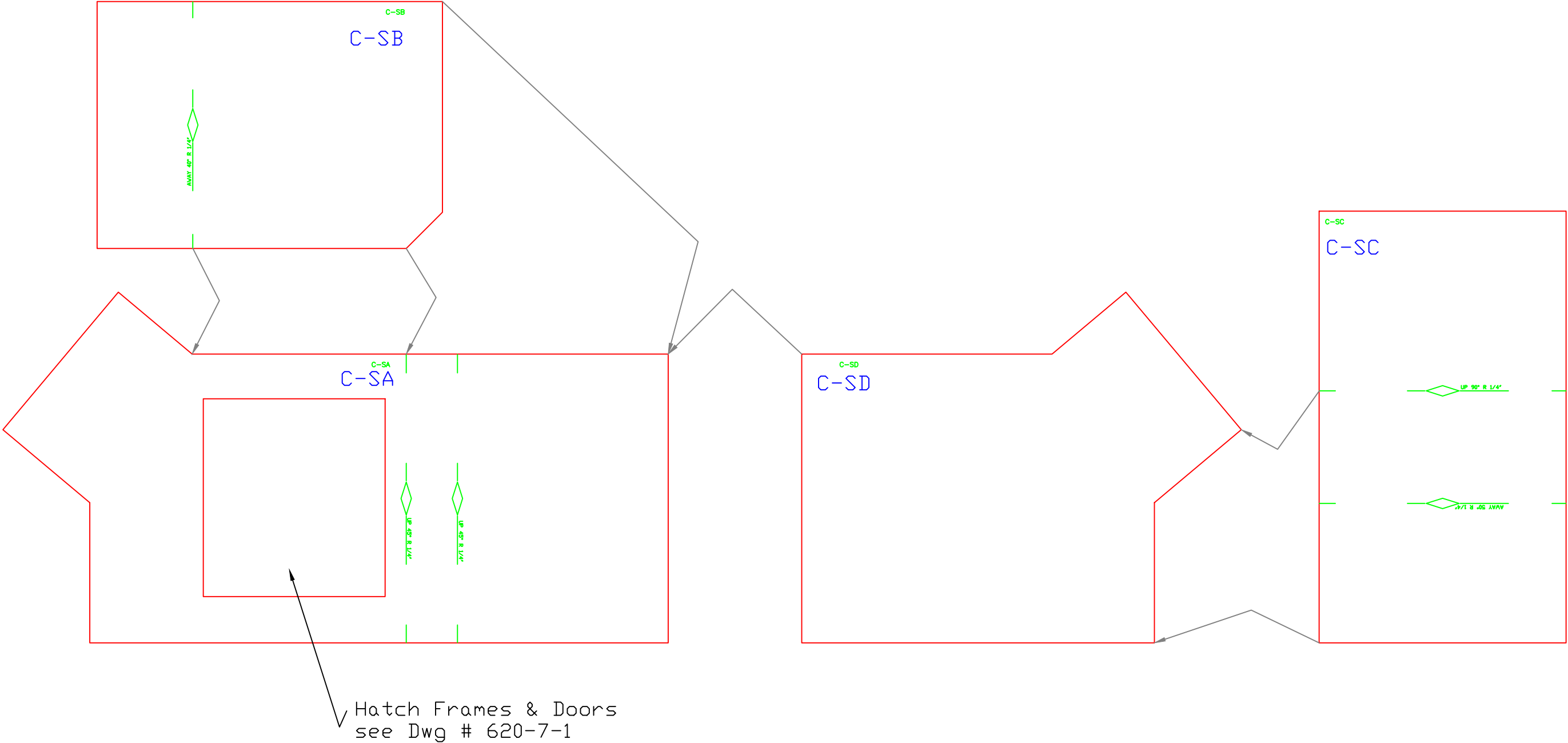
ST-AS

Scupper Tube
Aft Side to FTran
-P&S

UP 90° R 1/4'

This drawing and referenced information represent the intellectual property of Response Marine, Inc. Use, reproduction, or transmittal of drawings and referenced NC part files requires pre-payment of licensing fee to Response Marine, Inc. Construction of each boat and component fabrication are licensed on a per boat basis, and require proof of payment for each unit built, prior to construction. Possession of this drawing and referenced information does not constitute the right to use. Proper boat construction and outfitting requires knowledge and expertise beyond the scope of this, and other, drawings, and this knowledge and expertise is the sole responsibility of the builder.

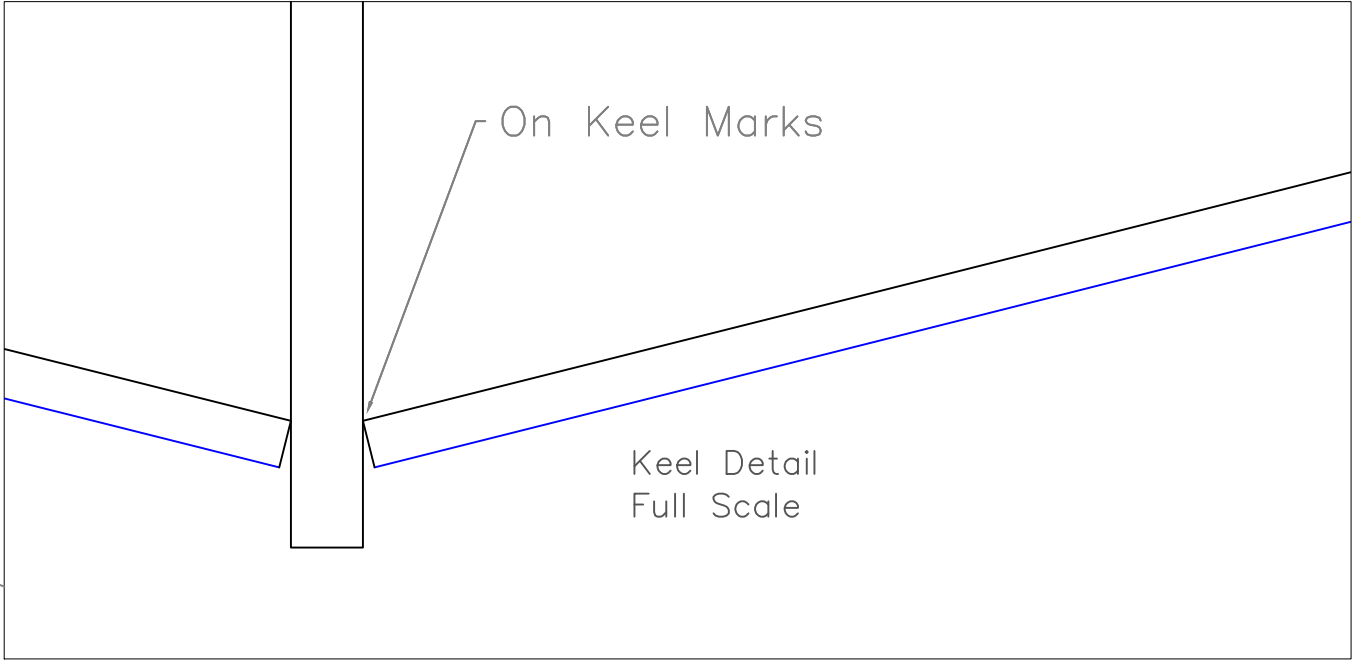
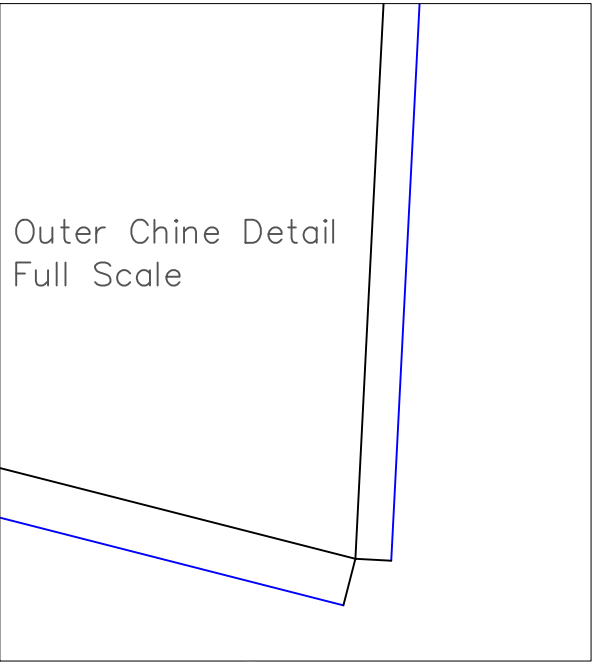
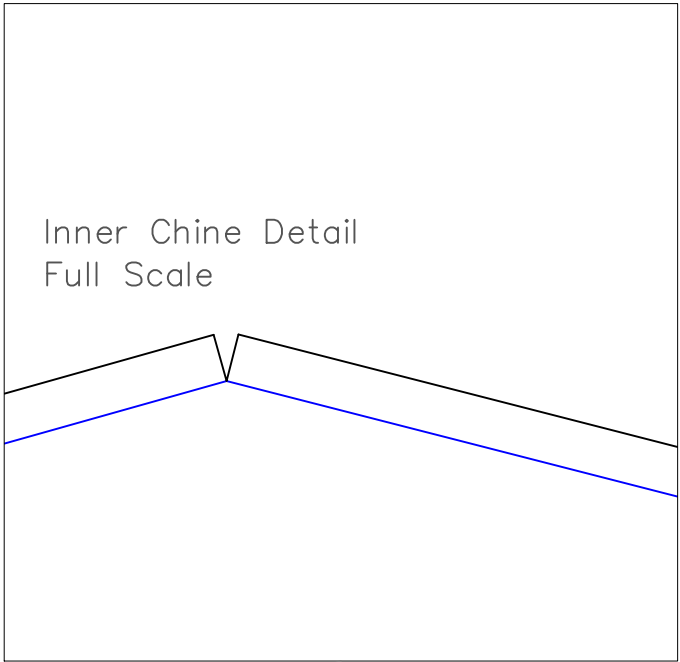
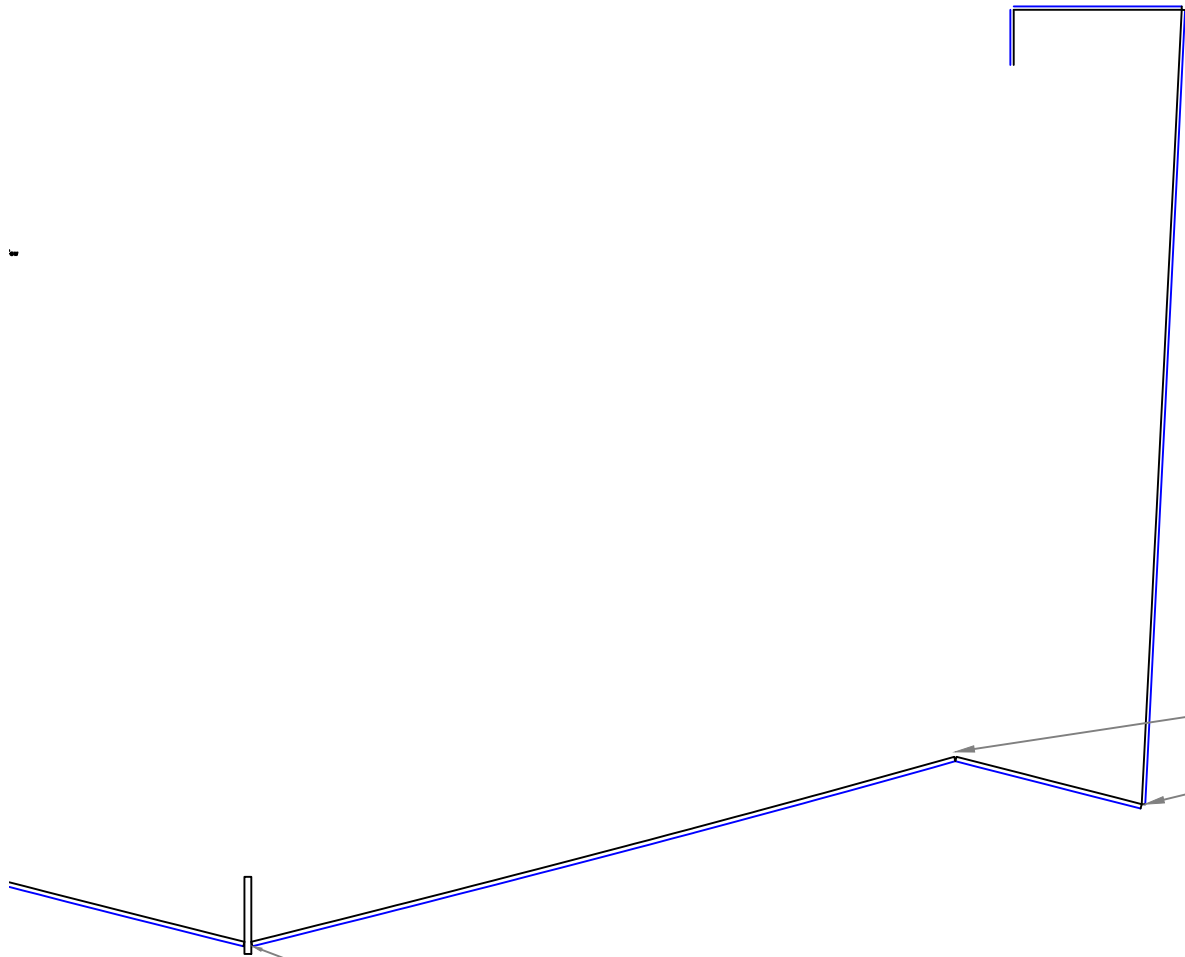
REV.	DESCRIPTION	 Response Marine, Inc. Newburyport, MA, www.responsemarine.com	SHEET
			DWG NO. 620-2-14



This drawing and referenced information represent the intellectual property of Response Marine, Inc. Use, reproduction, or transmittal of drawings and referenced NC part files requires pre-payment of licensing fee to Response Marine, Inc. Construction of each boat and component fabrication are licensed on a per boat basis, and require proof of payment for each unit built, prior to construction. Possession of this drawing and referenced information does not constitute the right to use. Proper boat construction and outfitting requires knowledge and expertise beyond the scope of this, and other, drawings, and this knowledge and expertise is the sole responsibility of the builder.

REV.	DESCRIPTION

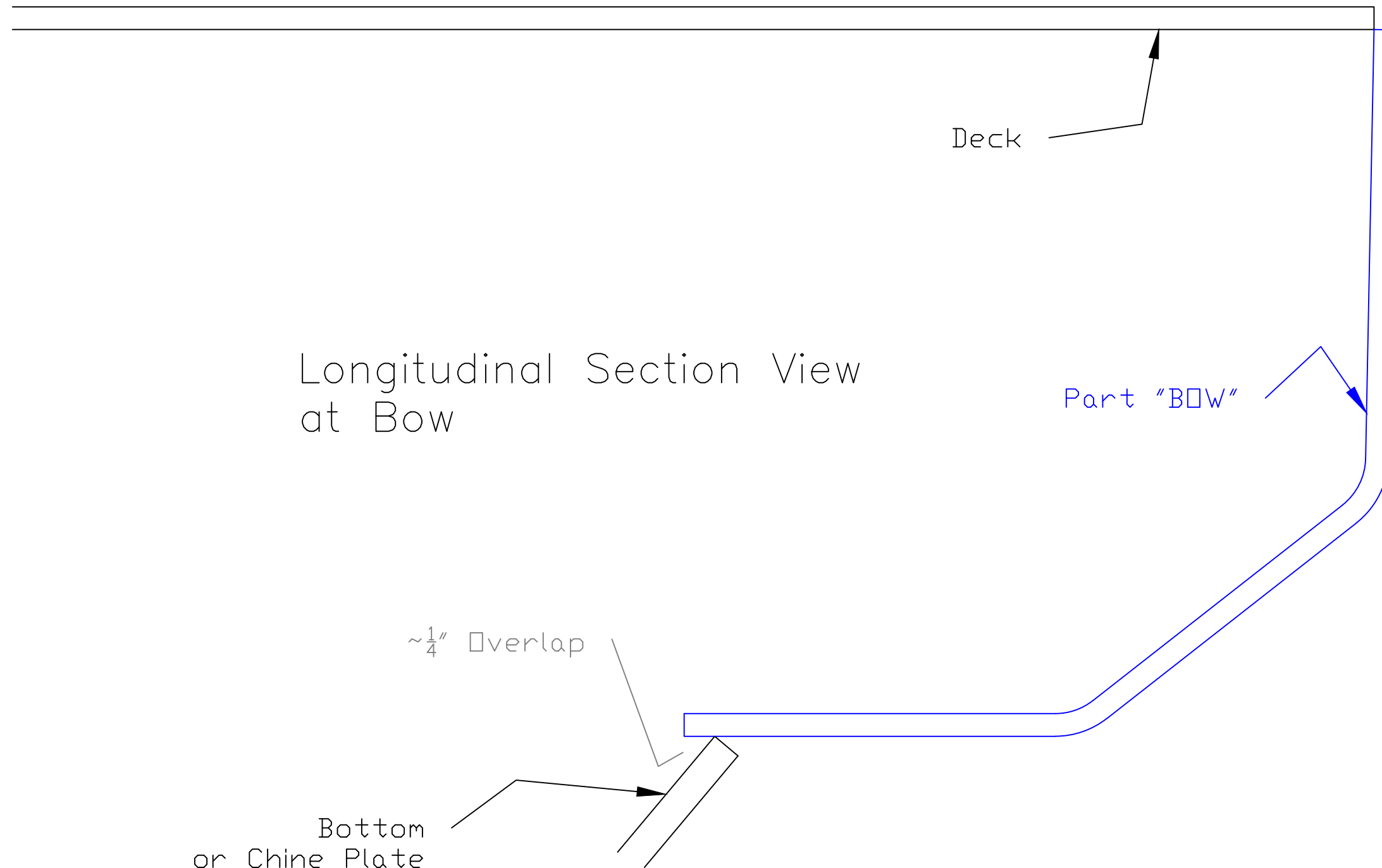
Console– Stbd, Helm		
25.9'x8.5' Cathedral		
SCALE 1" = 1'	DES/DWN WAL	DATE 9/29/21
Response Marine, Inc. Newburyport, MA, www.responsemarine.com		SHEET DWG. NO. 620-4-2



This drawing and referenced information represent the intellectual property of Response Marine, Inc. Use, reproduction, or transmittal of drawings and referenced NC part files requires pre-payment of licensing fee to Response Marine, Inc. Construction of each boat and component fabrication are licensed on a per boat basis, and require proof of payment for each unit built, prior to construction. Possession of this drawing and referenced information does not constitute the right to use. Proper boat construction and outfitting requires knowledge and expertise beyond the scope of this, and other, drawings, and this knowledge and expertise is the sole responsibility of the builder.

REV.	DESCRIPTION

Hull Joint Details– Bottom		
25.9'x8.5' Cathedral		
SCALE AS NOTED	DES/DWN WAL	DATE 9/29/21
Response Marine, Inc. Newburyport, MA, www.responsemarine.com		SHEET DWG. NO. 620–C–1

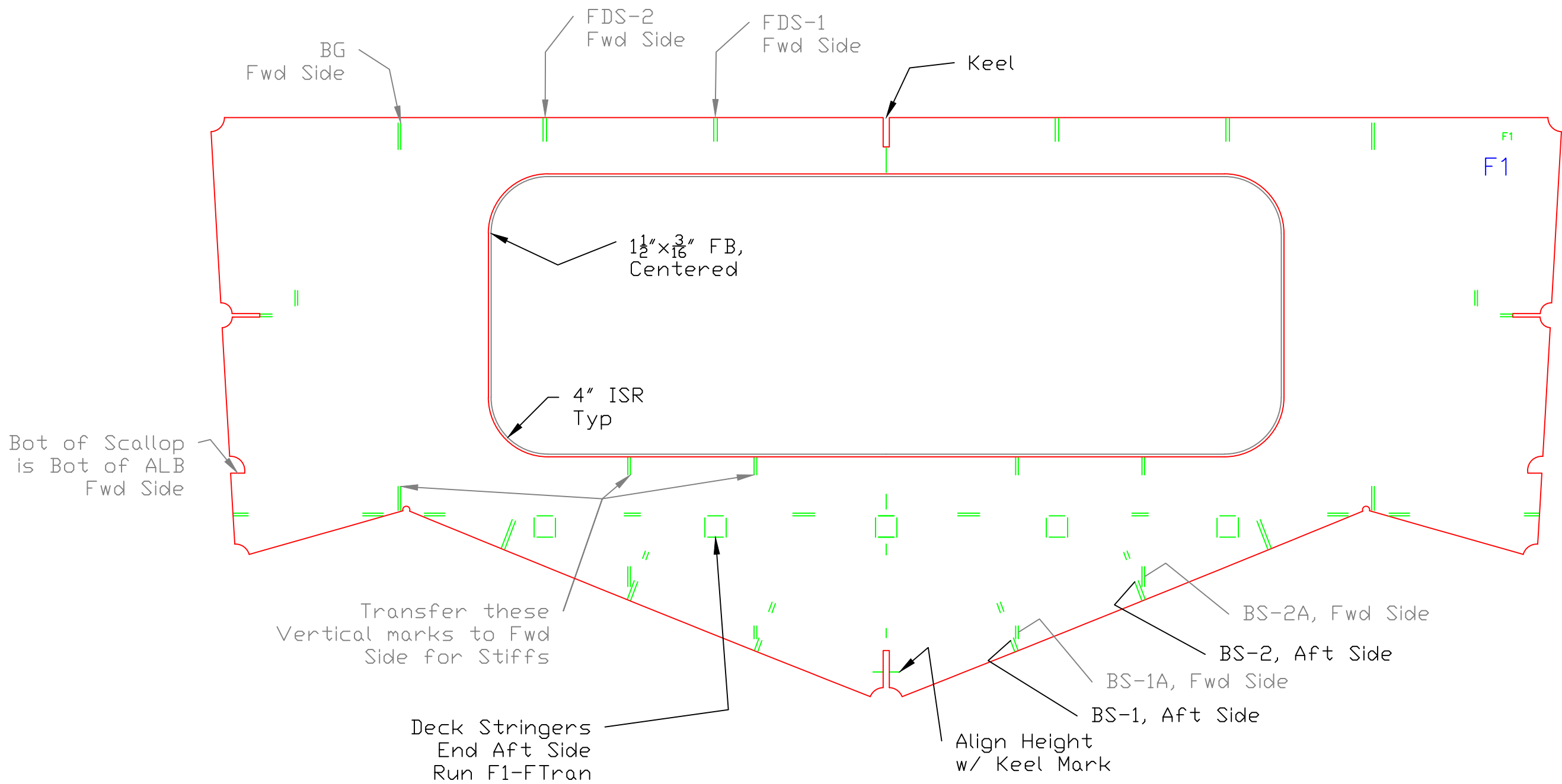


This drawing and referenced information represent the intellectual property of Response Marine, Inc. Use, reproduction, or transmittal of drawings and referenced NC part files requires pre-payment of licensing fee to Response Marine, Inc. Construction of each boat and component fabrication are licensed on a per boat basis, and require proof of payment for each unit built, prior to construction. Possession of this drawing and referenced information does not constitute the right to use. Proper boat construction and outfitting requires knowledge and expertise beyond the scope of this, and other, drawings, and this knowledge and expertise is the sole responsibility of the builder.

REV.	DESCRIPTION

Hull Joint Details– Bow		
25.9'x8.5' Cathedral		
SCALE FULL	DES/DWN WAL	DATE 9/29/21
Response Marine, Inc. Newburyport, MA, www.responsemarine.com		SHEET DWG. NO. 620-C-2

Marks Aft



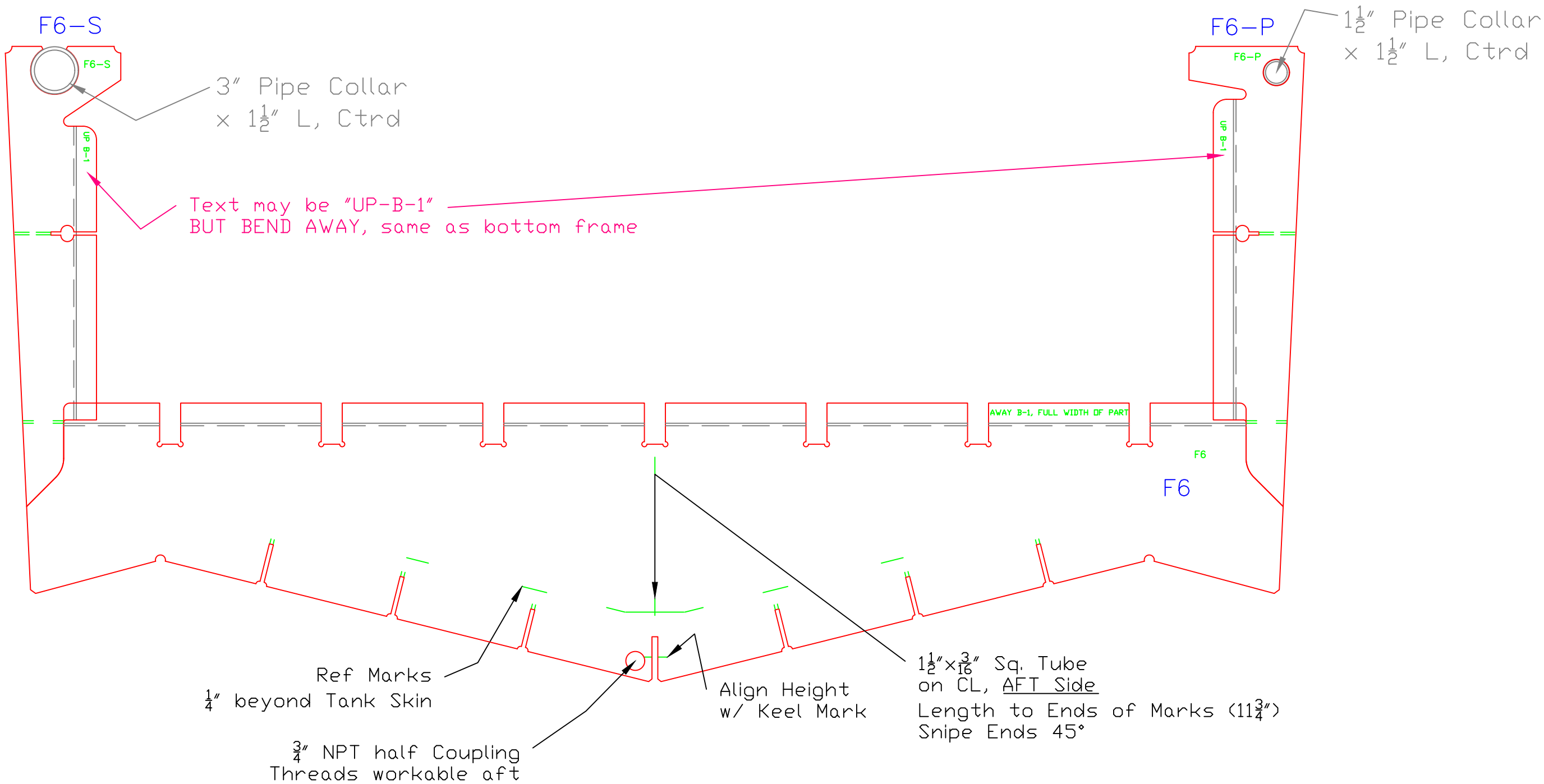
This drawing and referenced information represent the intellectual property of Response Marine, Inc. Use, reproduction, or transmittal of drawings and referenced NC part files requires pre-payment of licensing fee to Response Marine, Inc. Construction of each boat and component fabrication are licensed on a per boat basis, and require proof of payment for each unit built, prior to construction. Possession of this drawing and referenced information does not constitute the right to use. Proper boat construction and outfitting requires knowledge and expertise beyond the scope of this, and other, drawings, and this knowledge and expertise is the sole responsibility of the builder.

REV.	DESCRIPTION

Frame 1		
25.9'x8.5' Cathedral		
SCALE 1 1/2"=1'	DES/DWN WAL	DATE 9/29/21
Response Marine, Inc. Newburyport, MA, www.responsemarine.com		SHEET DWG. NO. 620-F1

Parts shown before
Forming

Flanges Aft
Marks FWD



This drawing and referenced information represent the intellectual property of Response Marine, Inc. Use, reproduction, or transmittal of drawings and referenced NC part files requires pre-payment of licensing fee to Response Marine, Inc. Construction of each boat and component fabrication are licensed on a per boat basis, and require proof of payment for each unit built, prior to construction. Possession of this drawing and referenced information does not constitute the right to use. Proper boat construction and outfitting requires knowledge and expertise beyond the scope of this, and other, drawings, and this knowledge and expertise is the sole responsibility of the builder.

REV. DESCRIPTION
R1, 12/13/21- Flange Direction note

Frame 6, WTBD		
25.9'x8.5' Cathedral		
SCALE 1 1/2"=1'	DES/DWN WAL	DATE 9/29/21
Response Marine, Inc.		REV 12/13/21
Newburyport, MA, www.responsemarine.com		DWG. NO. 620-F6,r1