

4 |

3 |

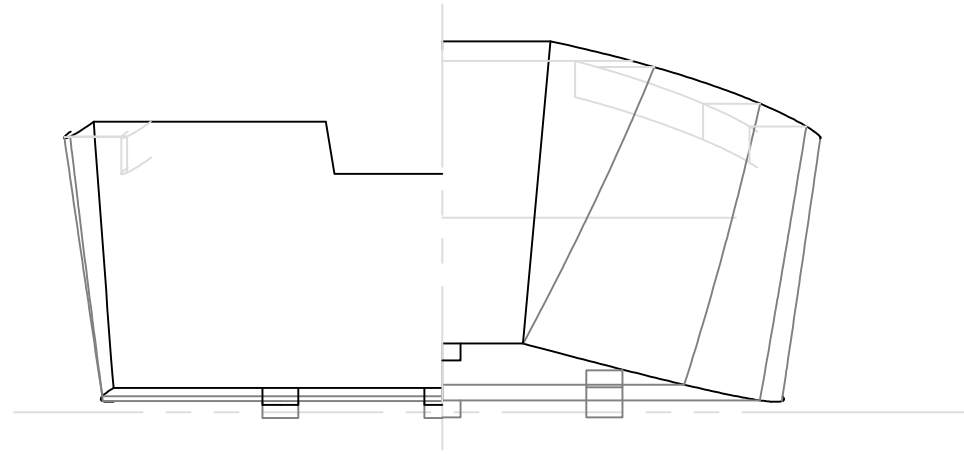
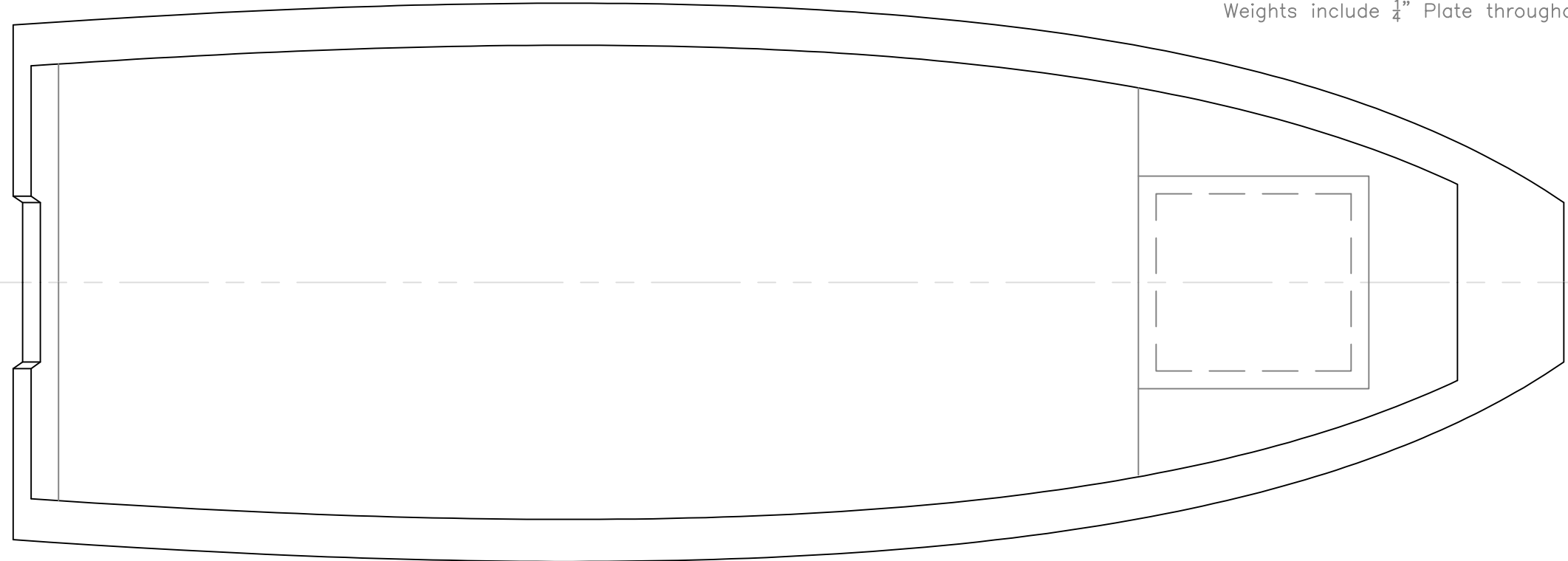
2 |

1 |

Station 0 |

Bottom Channels not Shown

Waterlines:
 A) 990 lbs, No crew, 40 hp engine, 6 gal fuel forward
 B) 1,170 lbs, A + 1 crew (@ 180 lbs each)
 Weights include 1/4" Plate throughout



BODY PLAN

Outboard Views

14' FB SKIFF

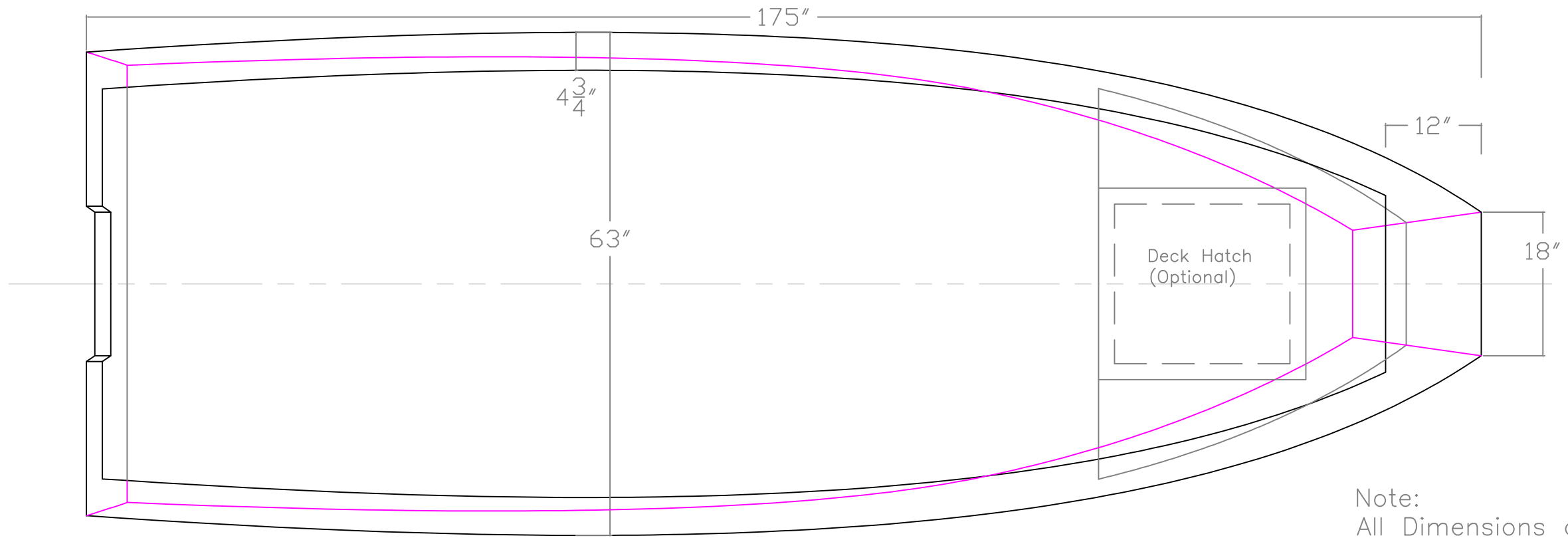
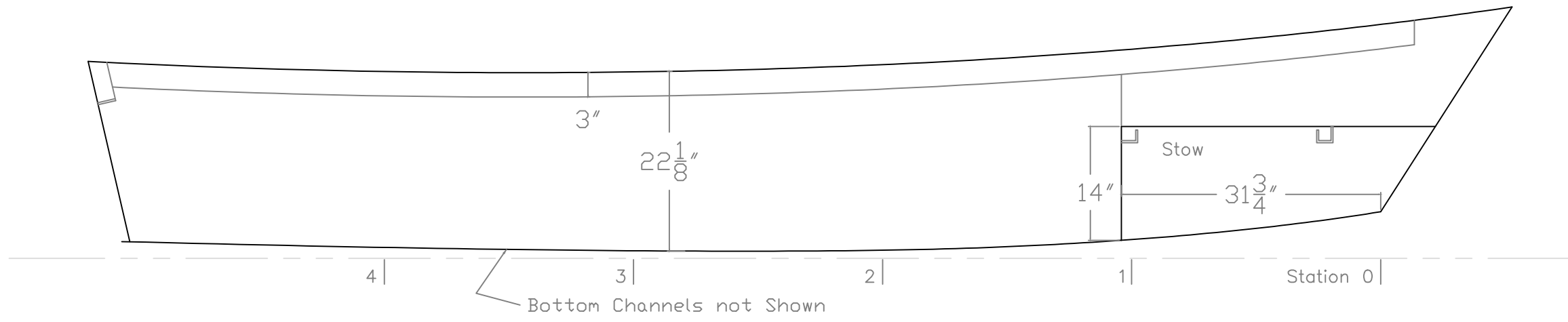
For: White Metal Welding

SCALE 3/4"=1'	DES/DWN WAL	DATE 11/5/14
------------------	----------------	-----------------

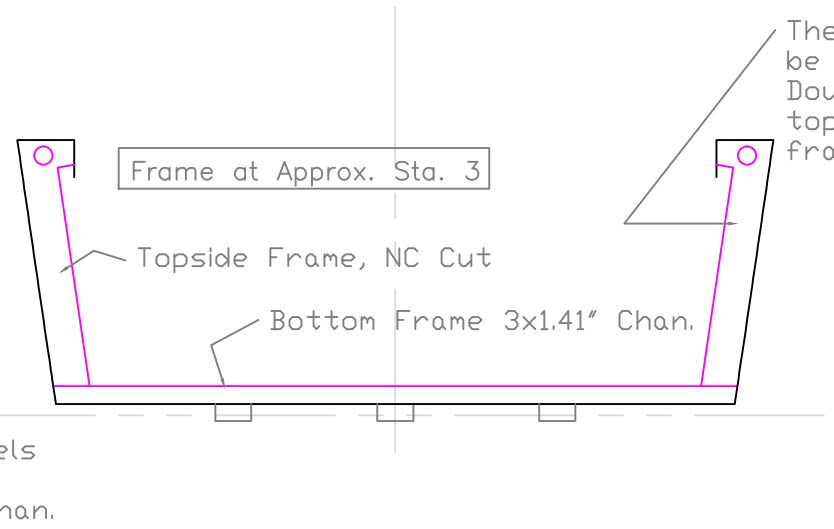
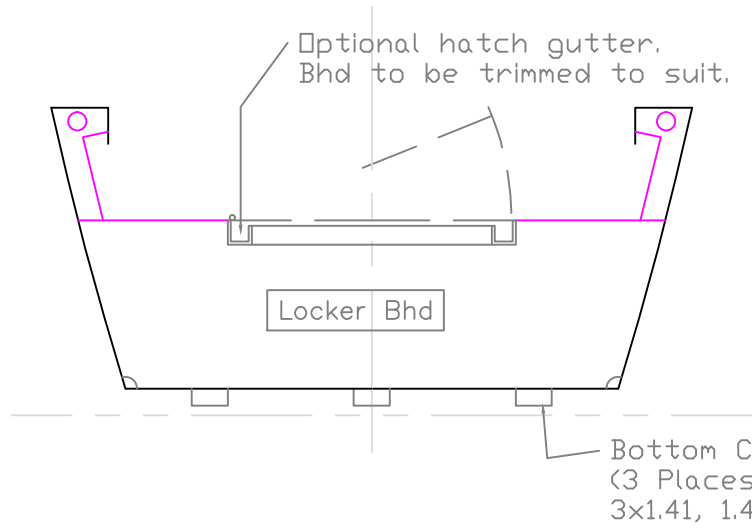
REV	DESCRIPTION

Response Marine, Inc.
 Newburyport, MA, www.responsemarine.com

DWG NO. 494-P1



Note:
All Dimensions are Inside Skins.



These Frames will be in Cut Parts. Might not be used with or without the bottom frame. Doublers will be in Cut Parts for use if the topside frames are used without the bottom frame.

Bottom Channels
(3 Places)
3x1.41, 1.42# Chan.

Inboard Views

14' FB SKIFF		
For: White Metal Welding		
SCALE 3/4"=1'	DES/DWN WAL	DATE 11/5/14
Response Marine, Inc.		REV
Newburyport, MA, www.responsemarine.com		DWG NO. 494-2

REV.	DESCRIPTION