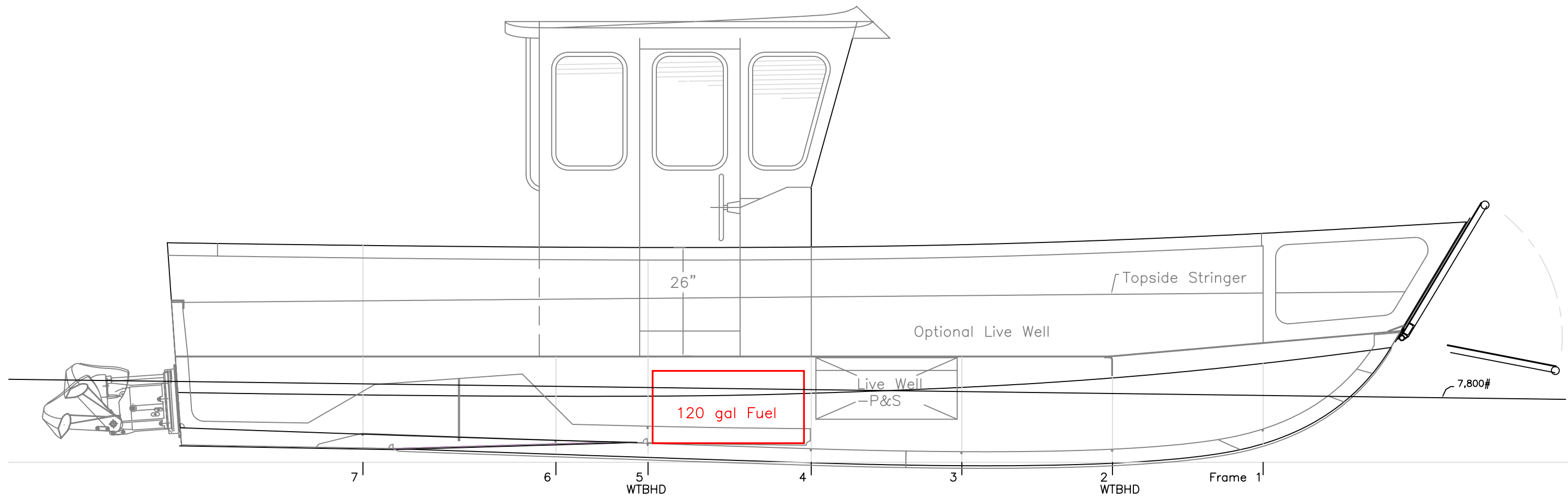


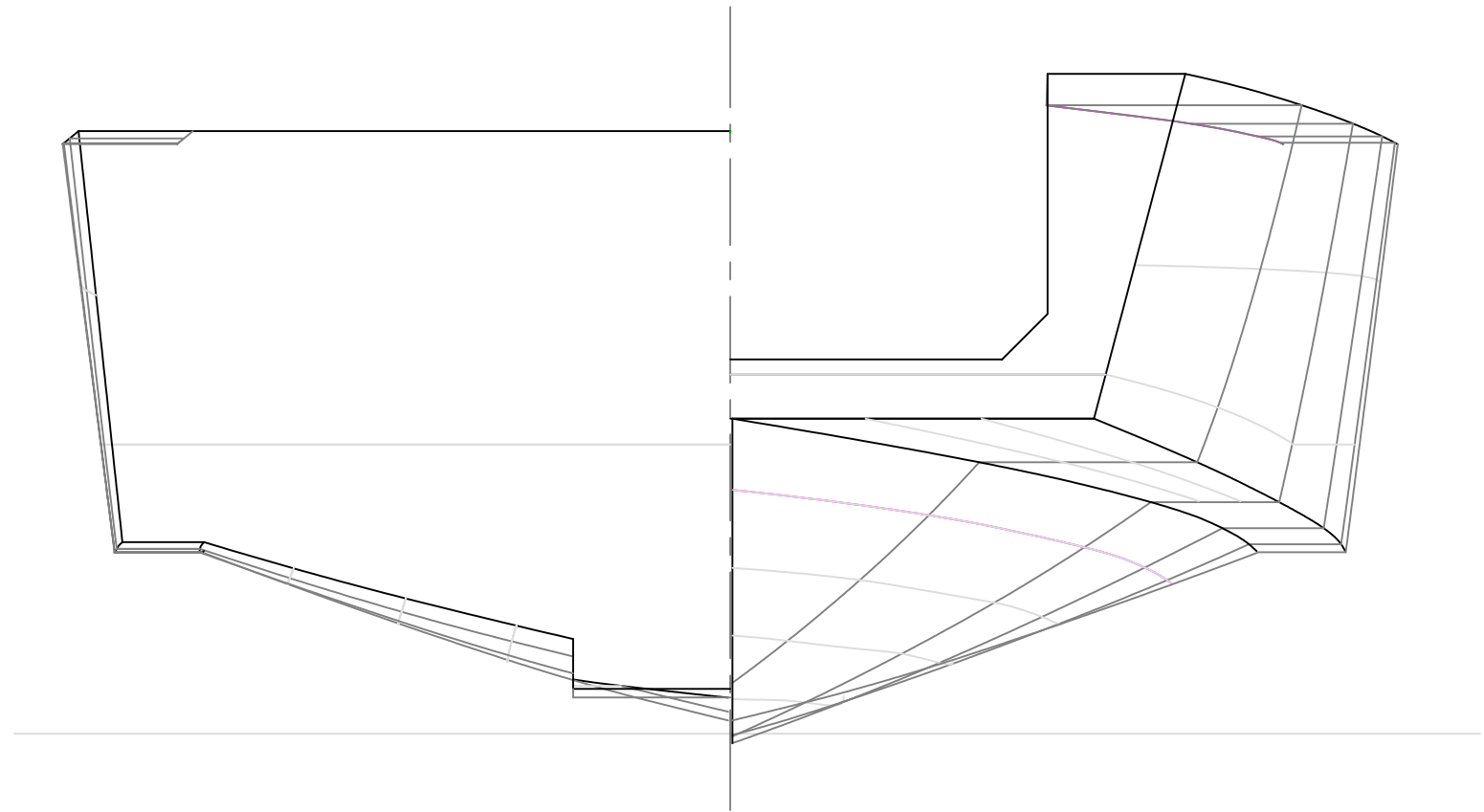
OUTBOARD VIEWS		
25.9'X10' JET LANDING CRAFT		
SCALE 1/2" = 1'	DES/DWN WAL	DATE 3/22/08
<b>Response Marine, Inc.</b> Newburyport, MA, <a href="http://www.responsemarine.com">www.responsemarine.com</a>		SHEET DWG NO. 302-01

REV.	DESCRIPTION



INBOARD PROFILE		
25.9'X10' JET LANDING CRAFT		
SCALE 1/2" = 1'	DES/DWN WAL	DATE 3/22/08
<b>Response Marine, Inc.</b> Newburyport, MA, <a href="http://www.responsemarine.com">www.responsemarine.com</a>		SHEET DWG NO. 302-02

REV.	DESCRIPTION



BODY PLAN- FRAMES

25.9'X10' JET LANDING CRAFT

SCALE 3/4" = 1'	DES/DWN WAL	DATE 3/22/08
--------------------	----------------	-----------------

<b>Response Marine, Inc.</b>		SHEET
------------------------------	--	-------

Newburyport, MA, <a href="http://www.responsemarine.com">www.responsemarine.com</a>	DWG NO. 302-03
---	-------------------

REV.	DESCRIPTION