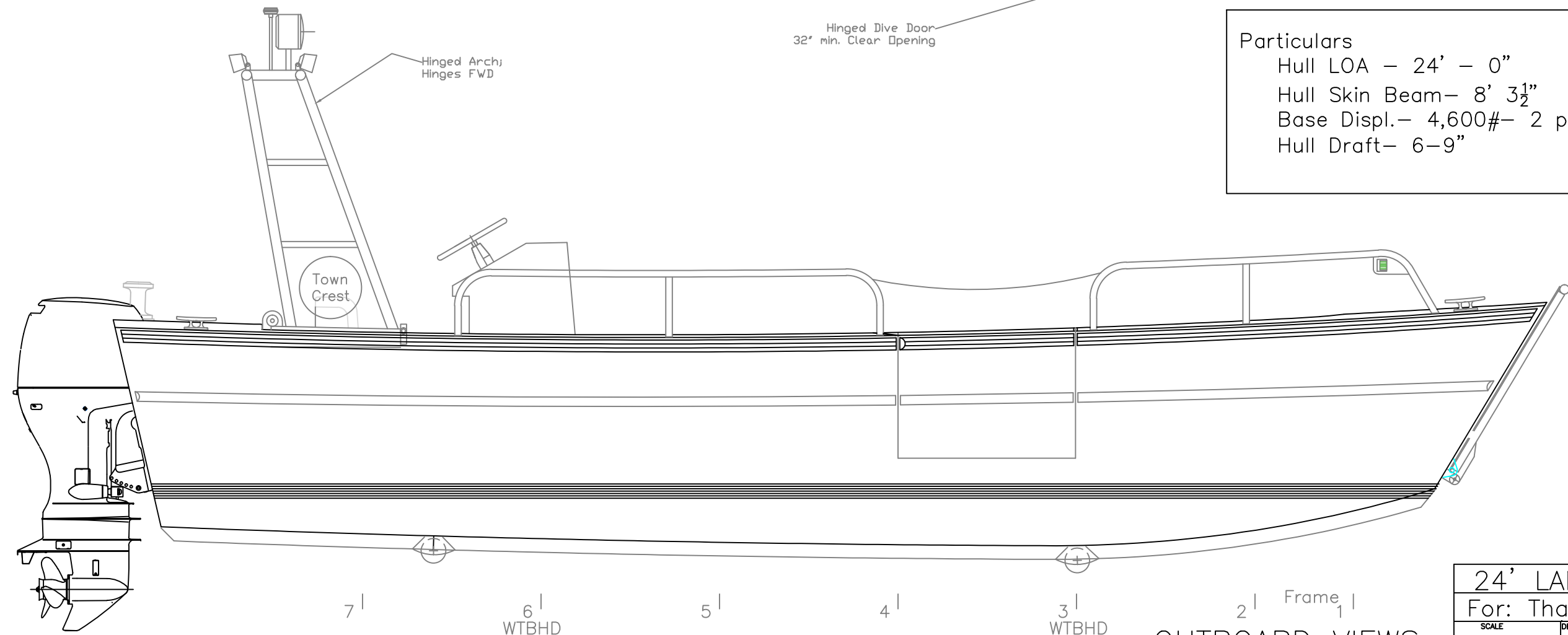


Hinged Dive Door  
32' min. Clear Opening

Hinged Arch  
Hinges FWD

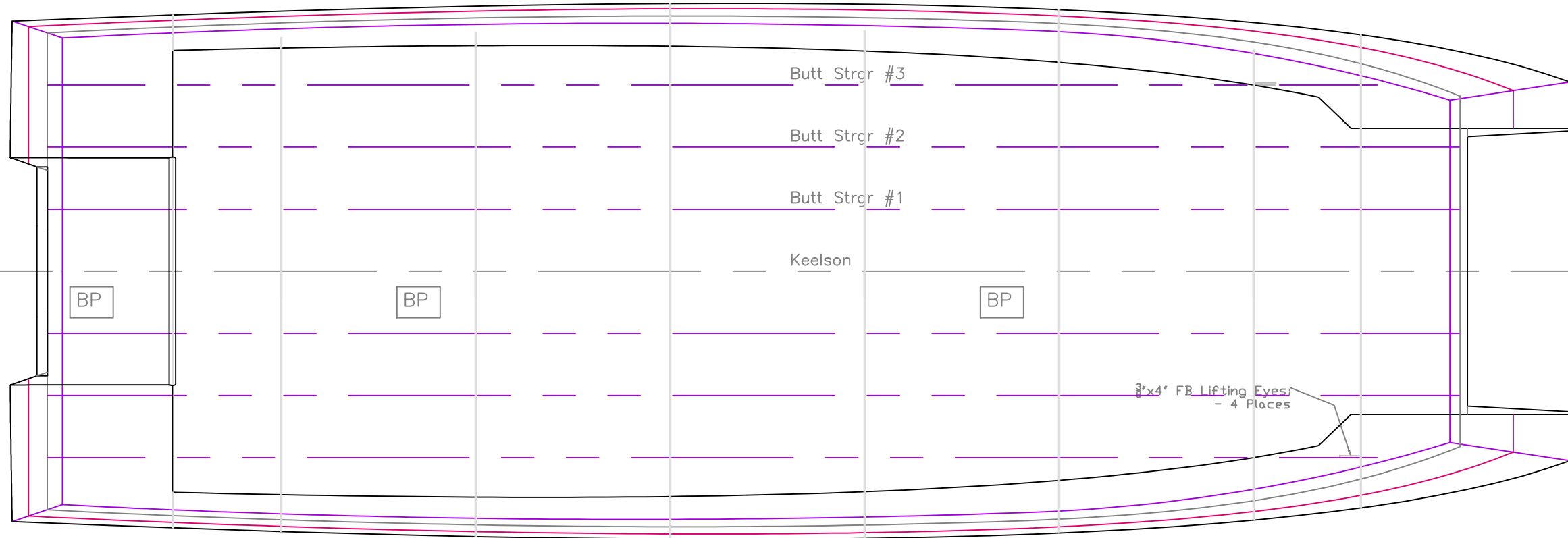
**Particulars**  
 Hull LOA - 24' - 0"  
 Hull Skin Beam - 8' 3 1/2"  
 Base Displ. - 4,600# - 2 pax, 1/2 fuel  
 Hull Draft - 6-9"



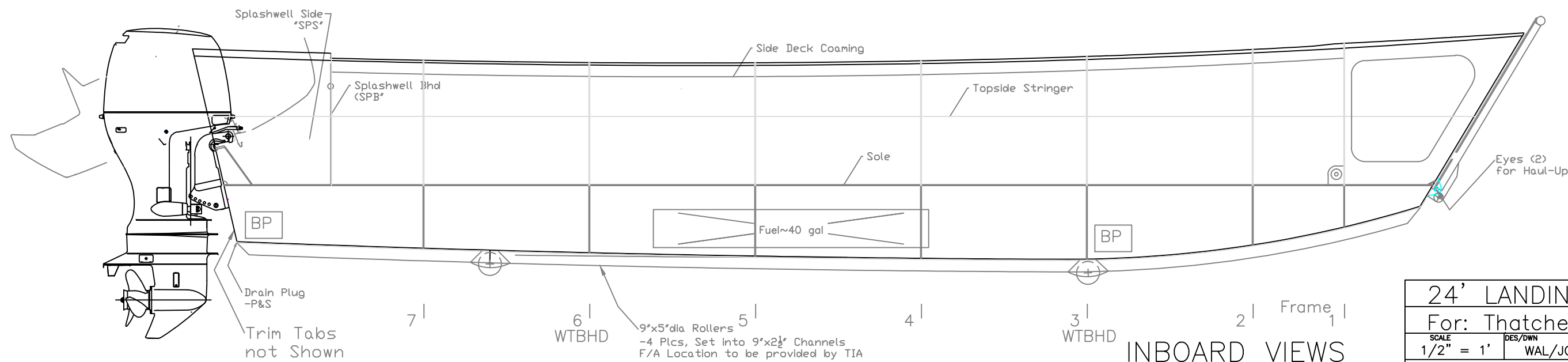
**OUTBOARD VIEWS**

REV. DESCRIPTION

24' LANDING CRAFT		
For: Thatchers Island		
SCALE 1/2" = 1'	DES/DWN WAL/JCC	DATE 3/3/14
<b>Response Marine, Inc.</b> Newburyport, MA www.responsemarine.com		SHEET DWG NO. 497-1



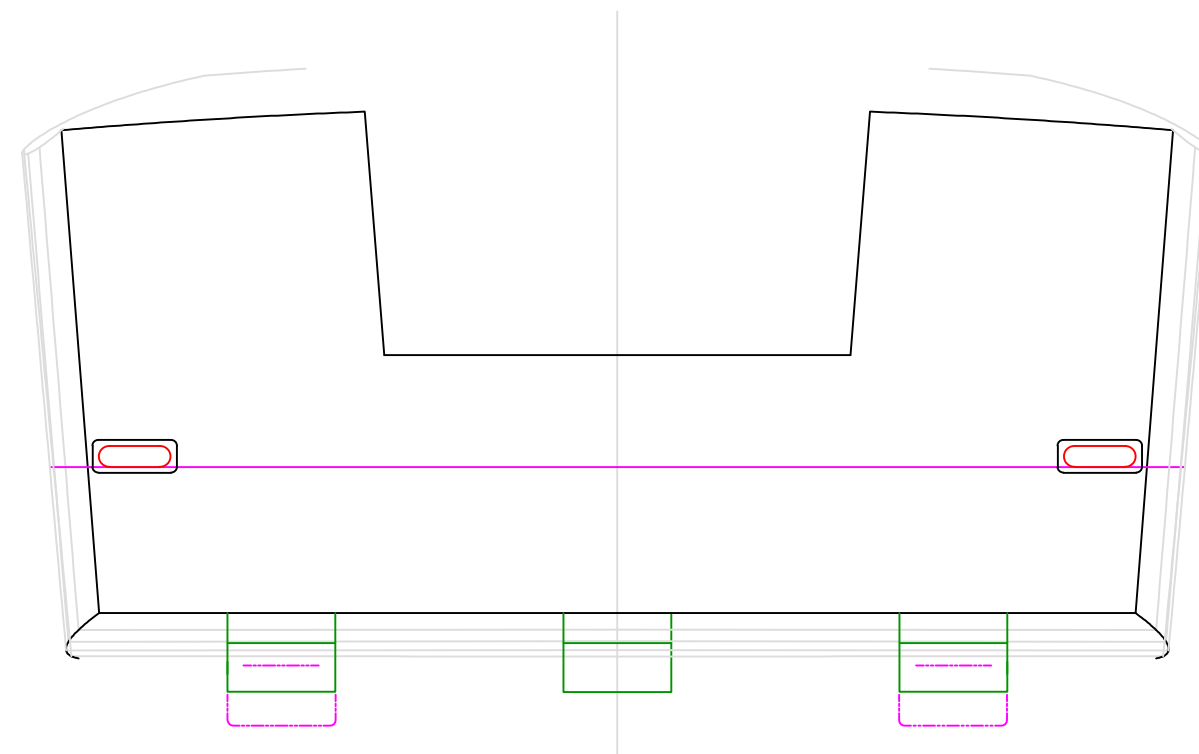
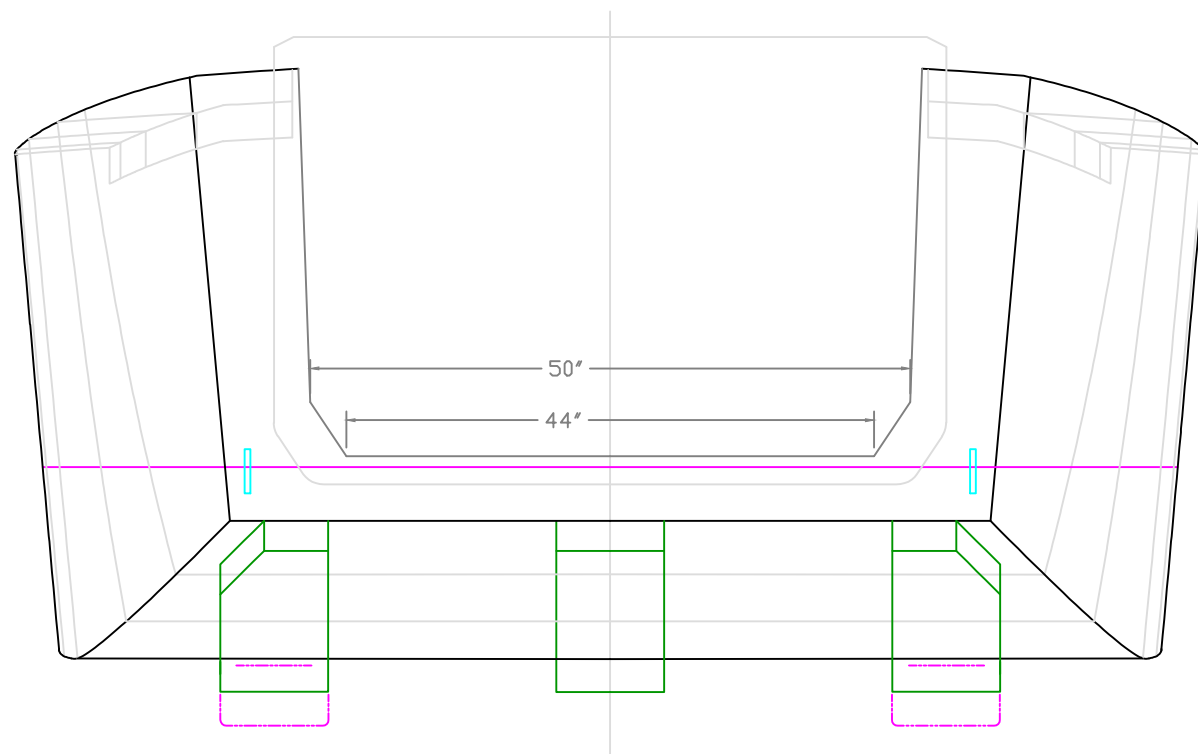
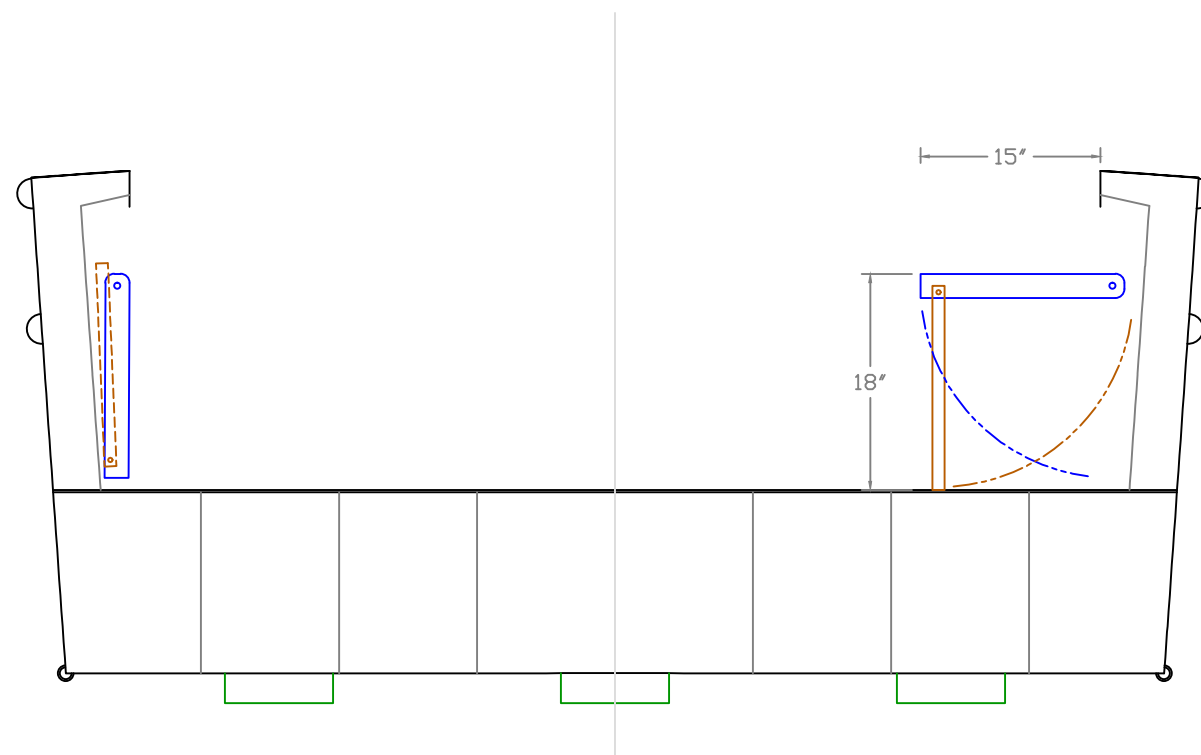
Butt Strgr's & Keelson Capped with 3/6"x 1 1/2" FB



INBOARD VIEWS

REV. DESCRIPTION

24' LANDING CRAFT		
For: Thatchers Island		
SCALE 1/2" = 1'	DES/DWN WAL/JCC	DATE 3/3/15
Response Marine, Inc. Newburyport, MA, www.responsemarine.com		SHEET DWG NO. 497-2



END & SECTION VIEWS

24' LANDING CRAFT		
For: Thatchers Island		
SCALE 3/4" = 1'	DES/DWN WAL/JCC	DATE 3/3/15
REV.		SHEET
DESCRIPTION		DWG NO. 497-3
<b>Response Marine, Inc.</b> Newburyport, MA, www.responsemarine.com		