

DRAWING LIST

Design	Dwg	Description	Customer	Date
RS 290 - Bill Deckelman				
493	-1	Outboard Profile		12/30/14
	-2	Outboard Plan		12/30/14
	-3	Inboard Profile & Body Plan		12/30/14
	2-1	Keel Layout		12/30/14
	2-2	Bottom Structure		12/30/14
	2-3	Topsides Structure		12/30/14
	2-4	Hull Joint Details		12/30/14
	2-5	Cockpit Deck		12/30/14
	2-6	Cockpit Deck- Aft Detail		12/30/14
	2-7	Side Decks & Coamings		12/30/14
	2-8	Topsides Stringers		12/30/14
	2-9	Transom Bulkhead		12/30/14
	2-10	Sheer Widths		12/30/14
	2-11	Step Chines		12/30/14
	2-12	Step Chines- Patterns		12/30/14
	3-1	Fuel Tank- 217 gal. Gross		12/30/14
	3-2	Fuel/Bilge Trunk Panels (P&S)		12/30/14
	B-1	Bending Flange "B-1"		12/30/14
	F-R	Frame Dimensions		12/30/14
	F-1	Frame 1		12/30/14
	F-2	Frame 2		12/30/14
	F-3	Frame 3		12/30/14
	F-4	Frame 4		12/30/14
	F-5	Frame 5		12/30/14
	F-6	Frame 6		12/30/14
	F-7	Frame 7		12/30/14
	F-8	Frame 8		12/30/14
	F-9	Frame 9		12/30/14
	F-T	Transom		12/30/14
RS 290 - Bill Deckelman				
Console Dwgs				
493	4-1	Console- OBD Profile		1/7/15
	4-2	Console- OBD Plan		1/7/15
	4-3	Console- Inbd Profile		1/7/15
	4-4	Console- Inbd Plan		1/7/15
	4-5	Consoles- Lkg Fwd		1/7/15
	4-6	Console- Skin Layout		1/7/15
	4-7	Consoles- Seat Base		1/7/15
	4-8	Consoles- Aft Stanchion		1/7/15
	4-9	Consoles- Fwd Roof Box		1/7/15
	4-10	Consoles- Roof		1/7/15
	4-11	Console- Int.P (Interior) Panels		1/7/15

NC CUT PARTS LIST
 #493, Rock Salt 290, Bill Deckelman
 Response Marine, Inc
 File: RMIde\BlackLab\RS290

1/21/2015

PART		<u>1/8" Parts-5086</u>				
	<u>Part #</u>	<u>Description</u>	<u>Pieces</u>	<u>Bending</u>	<u>Bending Instruction</u>	
12/26/2014	FB-1P	Forward Bench Vertical Face, Port	1	Y	As marked on part	
12/26/2014	FB-1S	Forward Bench Vertical Face, Stbd	1	Y	As marked on part	
	SC1A-S	Step Chine #1 Pattern- fwd, side	1			
2/21/14	SC1B-S	Step Chine #1 Pattern- aft, side	1			
2/21/14	SC1A-B	Step Chine #1 Pattern- fwd, bottom	1			
2/21/14	SC1B-B	Step Chine #1 Pattern- aft bottom	1			
2/21/14	SC-2A-S	Step Chine #2 Pattern- fwd, side	1			
2/21/14	SC-2B-S	Step Chine #2 Pattern- aft, side	1			
2/21/14	SC-2A-B	Step Chine #2 Pattern- fwd, bottom	1			
2/21/14	SC2B-B	Step Chine #2 Pattern- aft bottom	1			
1/16/15	T-RF	Tee Top Roof- ONE PIECE	1			
	T-SEA-P	Tee, Aft Stanchion Front, Port	1			
	T-SEA-S	Tee, Aft Stanchion Front, Stbd	1			
		Sub Total 1/8" 5052	13			
PART		<u>3/16" Parts-5052</u>				
	<u>Part #</u>	<u>Description</u>	<u>Pieces</u>	<u>Bending</u>	<u>Bending Instruction</u>	
	AB-1	Aft Bench Box- Sides & Back	1	Y	As marked on part, "TR"= 1/4" IS Radius	
	AB-2	Aft Bench Box- Top & Front	1	Y	As marked on part, "TR"= 1/4" IS Radius	
	AB-3	Aft Bench Box- Aft Doors	2			
	AB-4	Aft Bench Box- Seat Back	1			
	C-A	Console Skin, Aft	1	Y	As marked on part, "TR"= 1/4" IS Radius	
	CI-ST	Console Interior- Sole at Tanks	1			
	CI-S	Console Interior- Sole	1			
	CI-SE	Console Interior- Sole Fwd End	1			
	CI-SS	Console Interior- Step, Stbd	1	Y	As marked on part, "TR"= 1/4" IS Radius	
	CI-SP	Console Interior- Step, Port	1	Y	As marked on part, "TR"= 1/4" IS Radius	
	C-T	Console Top/Front	1	Y	As marked on part, "TR"= 1/4" IS Radius	
12/24/14	J-FDA	Jig- Foredeck, Fwd	1			
12/24/14	J-FDB	Jig- Foredeck, Aft	1			
	T-BA	Tee Top Fwd Box	1	Y	As marked on part, "TR"= 1/4" IS Radius	

T-BB	Tee Top Aft Box	1	Y	As marked on part, "TR"= 1/4" IS Radius
	Sub Total 3/16" 5052	16		

3/16" Parts-5083/86

<u>Part #</u>	<u>Description</u>	<u>Pieces</u>	<u>Bending</u>	<u>Bending Instruction</u>
12/24/14	ALB Anchor Locker Bottom	1		
	C-SD Console Side Door	1		
	C-SP Console Side, Port	1	Y	As marked on part
	C-SS Console Side, Stbd	1	Y	As marked on part
2/21/14	DB-A Deck Body, F1-F2	1		
2/21/14	DB-B Deck Body, F2-F4	1		
X	DB-C Deck Body, F4-F8	1		
X	DB-D Deck Body, F8-Transom	1		
X	DB-H Deck Body Hatch, Cockpit	1		
X	DB-HH Deck Body Hatch, Engine Deck	1		
X	DM-AP Deck Margin, F2-F4, Port	1		
X	DM-AS Deck Margin, F2-F4, Stbd	1		
X	DM-BP Deck Margin, F4-Transom, Port	1		
X	DM-BS Deck Margin, F4-Transom, Stbd	1		
12/28/14	F1-HC Frame 1 Hatch Cover	1		
12/24/14	F6-T1P Fuel Trunk Frame, Port	1		
12/24/14	F6-T1S Fuel Trunk Frame, Stbd	1		
12/28/14	F6-T2P Fuel Trunk Face, Port	1		
12/28/14	F6-T2S Fuel Trunk Face, Stbd	1		
12/28/14	F6-T3P Fuel Trunk Removeable Panel, Port	1		
12/28/14	F6-T3S Fuel Trunk Removeable Panel, Stbd	1		
12/24/14	F6-T4P Fuel Trunk Top Filler @ Coaming, Port	1		
12/24/14	F6-T4S Fuel Trunk Top Filler @ Coaming, Stbd	1		
12/26/2014	FB-2P Forward Bench Horizontal Face, Port	1		
12/26/2014	FB-2S Forward Bench Horizontal Face, Stbd	1		
12/24/14	FDC-1 Foredeck Coaming, IS	1		
12/24/14	FDC-2 Foredeck Coaming, OS	1		
12/24/14	FDC-3P Foredeck Coaming, TOP, Port	1		
12/24/14	FDC-3S Foredeck Coaming, TOP, Stbd	1		
12/24/14	FTR False Transom	1		
12/28/14	L-P Liner, Aft @ Transom Deck, Port	1		
12/28/14	L-S Liner, Aft @ Transom Deck, Stbd	1		
12/28/14	SD-AP Side/Fore Deck, Port, Fwd	1		
12/28/14	SD-AS Side/Fore Deck, Stbd, Fwd	1		
12/28/14	SD-BP Side/Fore Deck, Port, Aft	1		
12/28/14	SD-BS Side/Fore Deck, Stbd, Aft	1		
12/28/14	SDC-P Side Deck Coaming, Port	1		

12/28/14	SDC-S	Side Deck Coaming, Stbd	1		
12/24/14	ST-P	Scupper Tube, Port	1	Y	As marked on part
12/24/14	ST-S	Scupper Tube, Stbd	1	Y	As marked on part
X	T-1	Fuel Tank Ends	2		
	T-2	Fuel Tank Body	1	Y	As marked on part
	T-3	Fuel Tank Transverse Baffle	2		
X	T-4	Fuel Tank Long'l Baffle	2		
X	T-5	Fuel Tank Top	1		
	T-BGA-P	Tee Top Gusset, Fwd Port	1	Y	As marked on part
	T-BGA-S	Tee Top Gusset, Fwd Stbd	1	Y	As marked on part
	T-BGB-P	Tee Top Gusset, Aft Port	1		
	T-BGB-S	Tee Top Gusset, Aft Stbd	1		
12/28/14	TBK-P	Transom Bulkhead, Port	1		
12/28/14	TBK-S	Transom Bulkhead, Stbd	1		
	T-BSA-P	Tee Top Box Side, Fwd Port	1		
	T-BSA-S	Tee Top Box Side, Fwd Stbd	1		
12/28/14	TD	Transom Deck	1		
12/24/14	TD-S1	Transom Door, Side, Inboard	1		
12/24/14	TD-S2	Transom Door, Side, Outboard Buildout	1	Y	As marked on part
12/24/14	TD-T	Transom Door, Threshold	1	Y	As marked on part
	T-SA-P	Tee, Aft Stanchion, Inbd Port	1		
	T-SA-S	Tee, Aft Stanchion, Inbd Stbd	1		
	T-SB-P	Tee, Aft Stanchion, Outbd Port	1		
	T-SB-S	Tee, Aft Stanchion, Outbd Stbd	1		
	T-SEB-P	Tee, Aft Stanchion Back Port	1		
	T-SEB-S	Tee, Aft Stanchion Back Stbd	1		
		Sub Total 3/16" 5083/86	66		

1/4" Parts-5083/86

	<u>Part #</u>	<u>Description</u>	<u>Pieces</u>	<u>Bending</u>	<u>Bending Instruction</u>
12/28/14	B-AP	Bottom, Port, Fwd	1		
12/28/14	B-AS	Bottom, Stbd, Fwd	1		
12/28/14	B-BP	Bottom, Port, Aft	1		
12/28/14	B-BS	Bottom, Stbd, Aft	1		
12/28/14	BS-1P	Bottom Stringer #1, Port	1		
12/28/14	BS-1S	Bottom Stringer #1, Stbd	1		
12/28/14	BS-2P	Bottom Stringer #2, Port	1		
12/28/14	BS-2S	Bottom Stringer #2, Stbd	1		
12/28/14	BS-3P	Bottom Stringer #3, Port	1		
12/28/14	BS-3S	Bottom Stringer #3, Stbd	1		
12/28/14	BS-4P	Bottom Stringer #4, Port	1		
12/28/14	BS-4S	Bottom Stringer #4, Stbd	1		
2/21/14	F1	Frame 1	1		

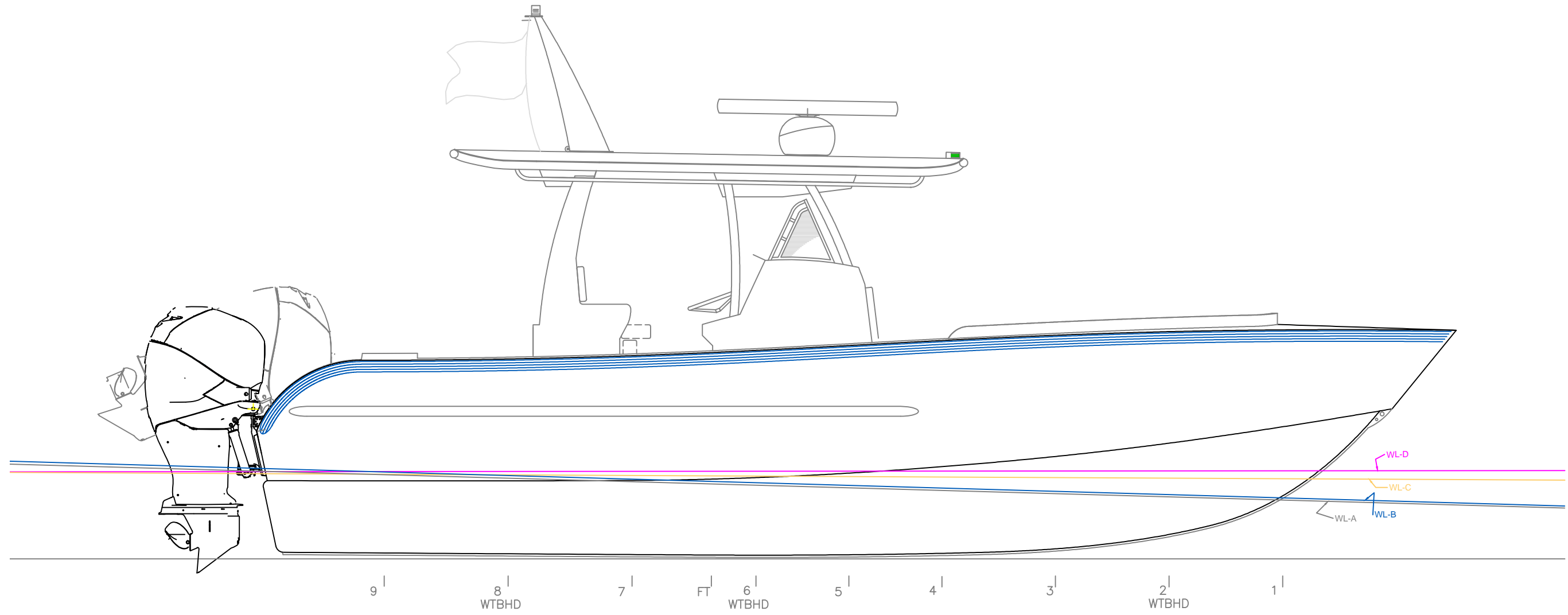
2/21/14	F2	Frame 2, WTBHD	1	Y	Per Drawing #B-1
2/21/14	F3	Frame 3	1	Y	Per Drawing #B-1
2/21/14	F3-P	Frame 3, Topsides, Port	1		
2/21/14	F3-S	Frame 3, Topsides, Stbd	1		
X	F4	Frame 4	1	Y	Per Drawing #B-1 (FLANGE FWD)
X	F5	Frame 5, WTBHD	1	Y	Per Drawing #B-1
X	F6	Frame 6	1	Y	Per Drawing #B-1
2/21/14	F6-P	Frame 6, Topsides, Port	1		
2/21/14	F6-S	Frame 6, Topsides, Stbd	1		
X	F6-D3P	Frame 6 Doubler at BS3, Fwd Side, Port	1		
X	F6-D3S	Frame 6 Doubler at BS3, Fwd Side, Stbd	1		
X	F7	Frame 7	1	Y	Per Drawing #B-1
X	F8	Frame 8, WTBHD	1	Y	Per Drawing #B-1
X	F9	Frame 9	1	Y	Per Drawing #B-1
12/28/14	G-P	Girder, Port	1	Y	Per Drawing #B-1
12/28/14	G-S	Girder, Stbd	1	Y	Per Drawing #B-1
X	TK-1	Transom Knee, BS1 to Transverse Angle	2		
X	TK-2	Transom Knee, BS2 to Transverse Angle	2		
X	TK-L	Transom Stiffener, @ Lip Above Deck, on Engine CL	2		
X	TK-S	Transom Stiffener, Transverse Angle to Lap Long'l Deck Angle	2		
12/28/14	TSL-AP	Topsides Stringer, Port, Fwd, Stem-F3	1		
12/28/14	TSL-AS	Topsides Stringer, Stbd, Fwd, Stem-F3	1		
12/28/14	TSL-BP	Topsides Stringer, Port, Bench/Shelf, F1-F5	1		
12/28/14	TSL-BS	Topsides Stringer, Stbd, Bench/Shelf, F1-F5	1		
12/28/14	TSL-CP	Topsides Stringer, Port, Shelf, F5-SwoopLip	1	Y	Per Drawing #B-1
12/28/14	TSL-CS	Topsides Stringer, Stb, Shelf, F5-SwoopLip	1	Y	Per Drawing #B-1
12/28/14	TS-AP	Topsides, Port, Fwd	1		
12/28/14	TS-AS	Topsides, Stbd, Fwd	1		
12/28/14	TS-BP	Topsides, Port, Aft	1		
12/28/14	TS-BS	Topsides, Stbd, Aft	1		
Sub Total 1/4" 5083/86			47		

3/8" Parts-5083/86

<u>Part #</u>	<u>Description</u>	<u>Pieces</u>
12/28/14	C-AP Chine Fwd, Port	1
12/28/14	C-AS Chine Fwd, Stbd	1
12/28/14	C-BP Chine Mid, Port	1
12/28/14	C-BS Chine Mid, Stbd	1
12/28/14	C-CP Chine Aft, Port	1
12/28/14	C-CS Chine Aft, Stbd	1
Sub Total 3/8" 5083/86		6

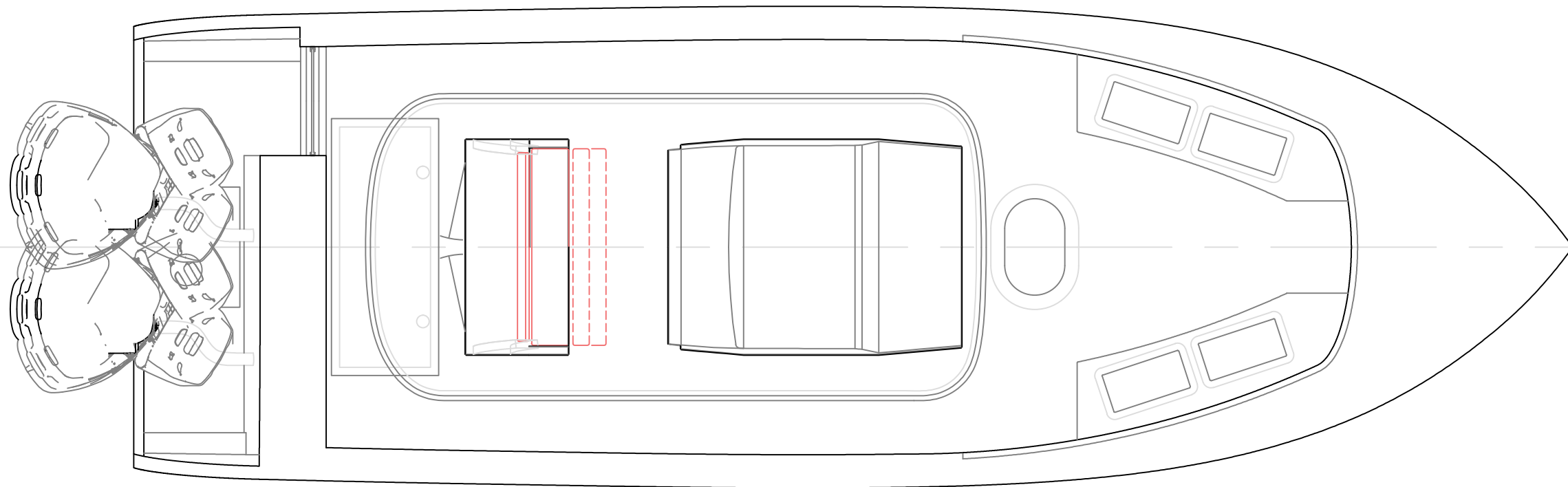
1/2" Parts-5083/86

<u>Part #</u>	<u>Description</u>	<u>Pieces</u>
12/29/14 K-A1	Keel, Foredeck CL at Stem	1
12/29/14 K-A	Keel, Fwd	1
12/29/14 K-B	Keel, Mid	1
12/29/14 K-C	Keel, Aft	1
2/21/14 TR	Transom	1
12/28/14 TL	Transom Lip	1
	Sub Total 1/2" 5083/86	6
	TOTAL PARTS:	154



OUTBOARD PROFILE		
RS-290, Deckelman		
SCALE 3/8" = 1'	DES/DWN WAL/JCC	DATE 12/30/14
Response Marine, Inc. Newburyport, MA, www.responsemarine.com		SHEET DWG NO. 493-1

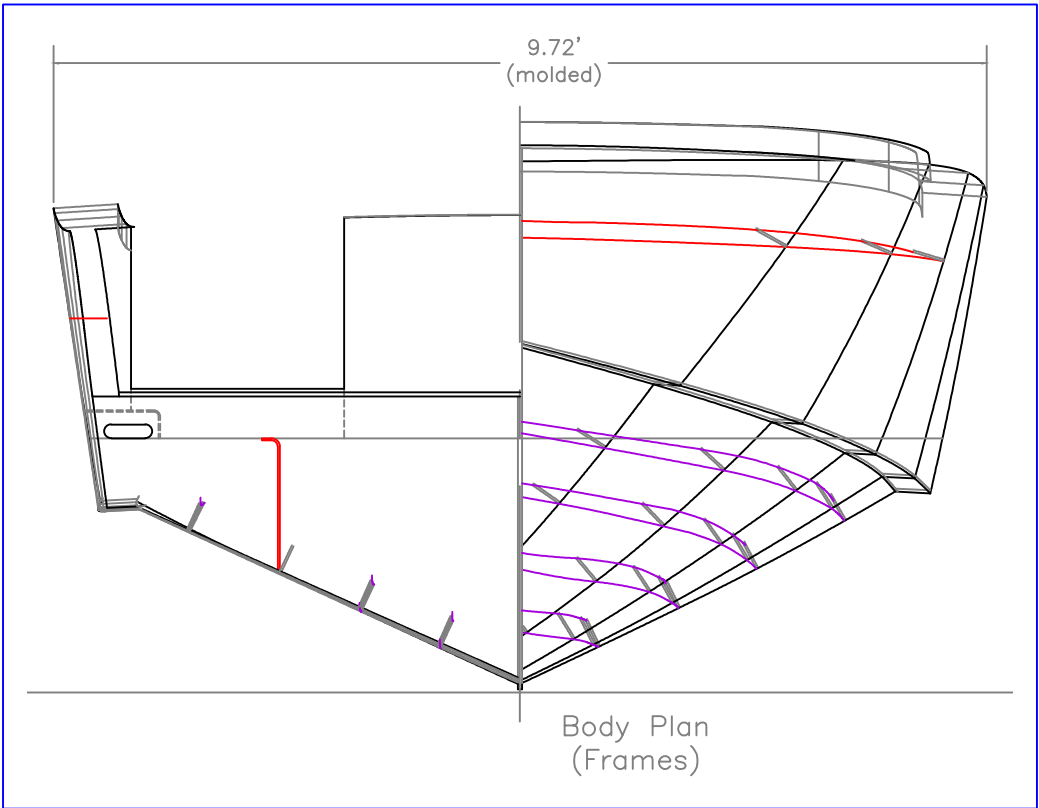
REV.	DESCRIPTION



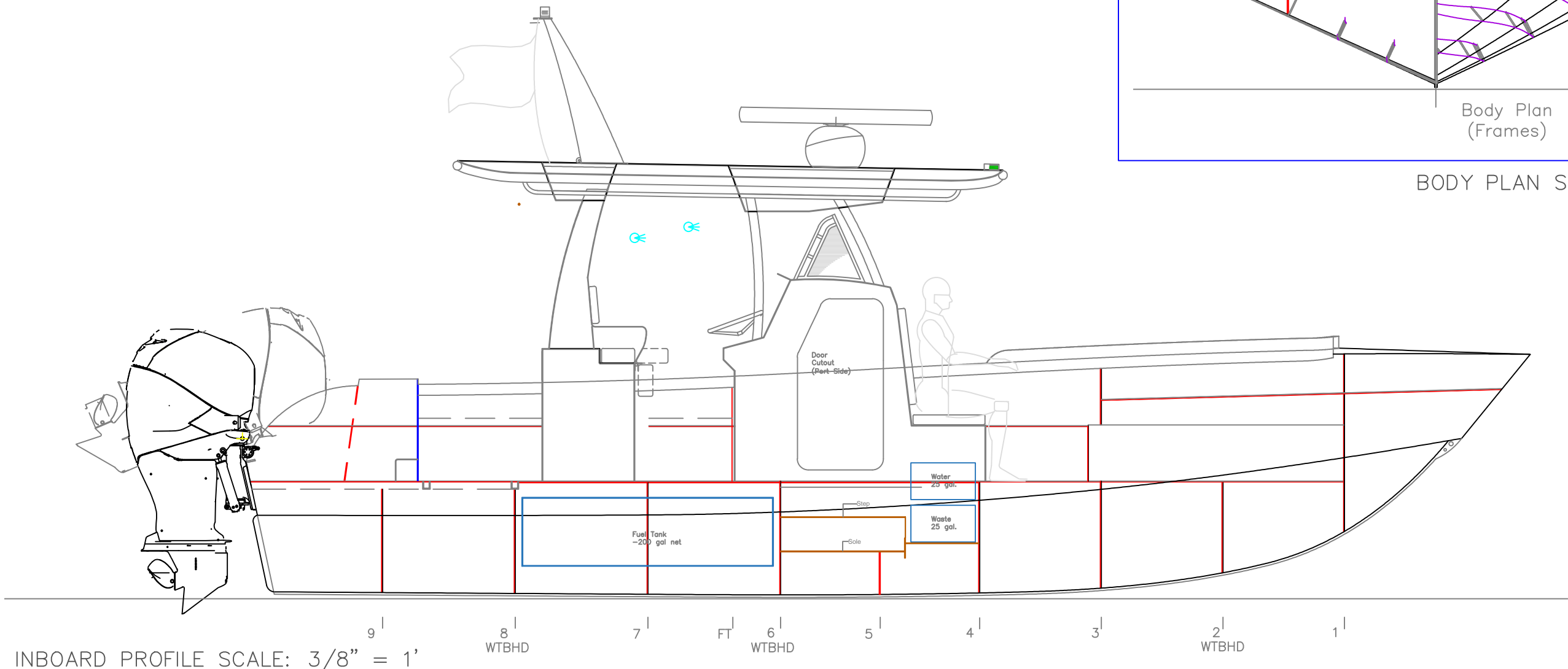
9' 8' WT BHD 7' FT 6' WT BHD 5' 4' 3' 2' WT BHD 1'

OUTBOARD PLAN		
RS-290, Deckelman		
SCALE 3/8" = 1'	DES/DWN WAL/JCC	DATE 12/30/14
Response Marine, Inc. Newburyport, MA, www.responsemarine.com		SHEET DWG NO. 493-2

REV.	DESCRIPTION



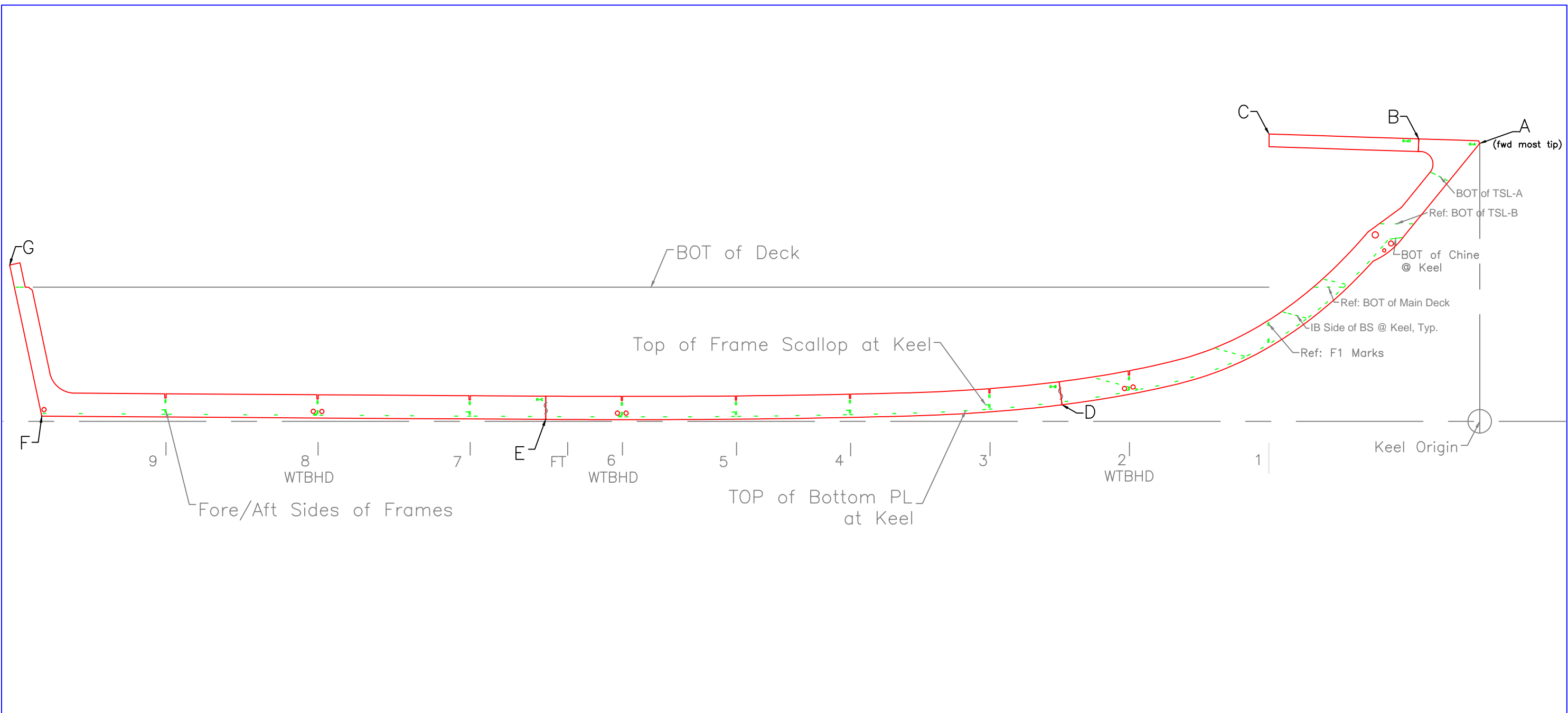
BODY PLAN SCALE: 1/2" = 1'



INBOARD PROFILE SCALE: 3/8" = 1'

INBOARD PROFILE & BODY		
RS-290, Deckelman		
SCALE NOTED	DES/DWN WAL/JCC	DATE 12/30/14
Response Marine, Inc. Newburyport, MA, www.responsemarine.com		SHEET DWG NO. 493-3

REV. DESCRIPTION

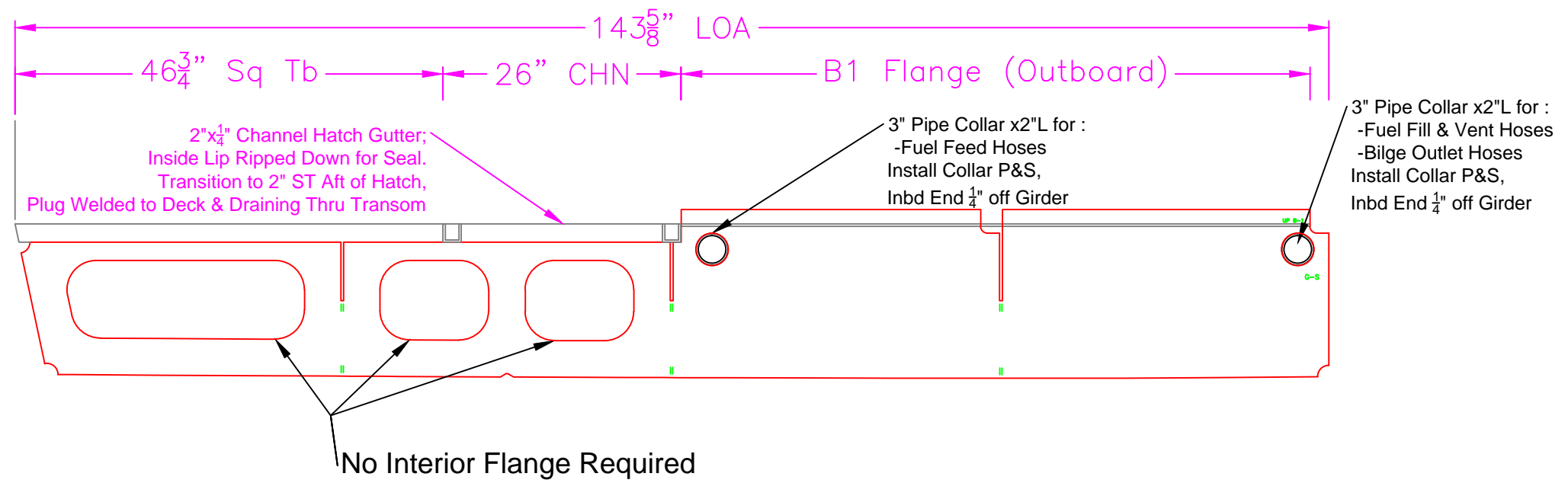
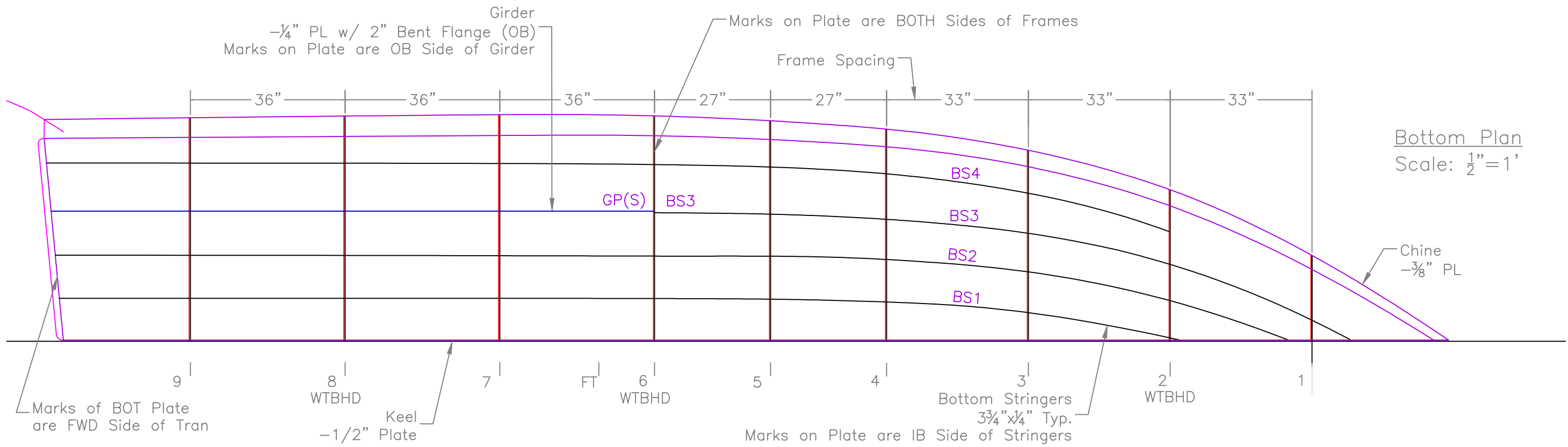


Response Marine, Inc.	1/16/15									
	Inches- sixteenths		ALIGNED (Inches-sixteenths)							
	Horizontal	Vertical	A	B	C	D	E	F		
A to Origin										
B to Origin										
C to Origin										
D to Origin										
E to Origin										
F to Origin										
G to Origin										

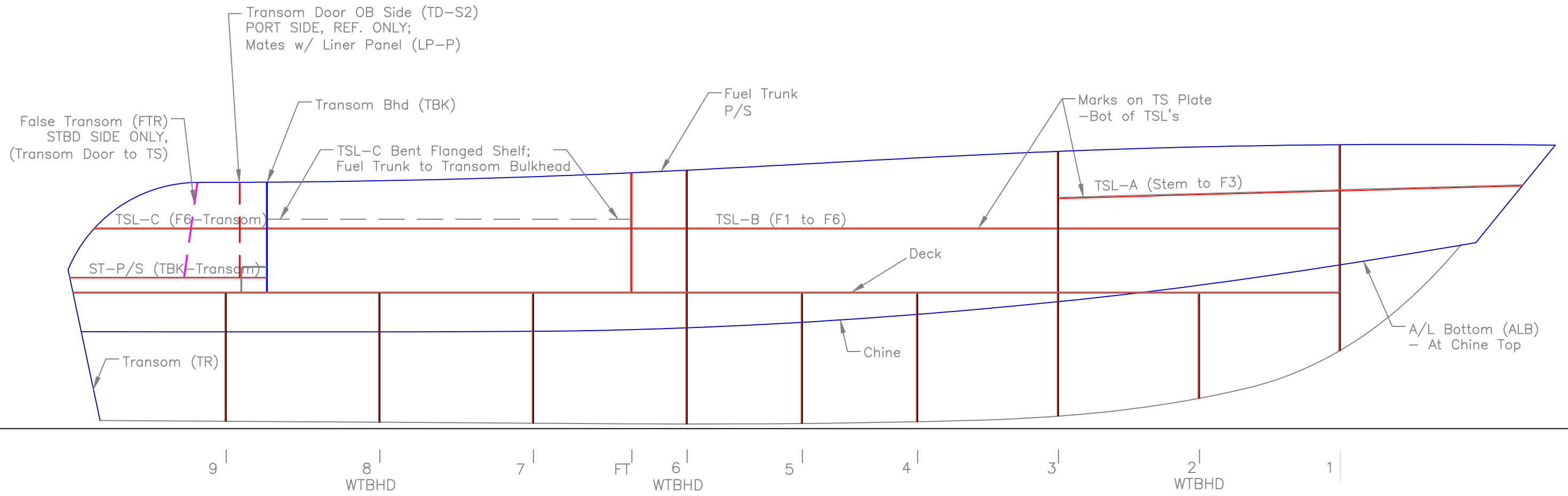
KEEL LAYOUT
 RS-290, Deckelman

SCALE 1/2" = 1'	DES/DWN WAL/JCC	DATE 12/30/14
Response Marine, Inc.		SHEET
Newburyport, MA, www.responsemarine.com		DWG NO. 493-2-1

REV.	DESCRIPTION

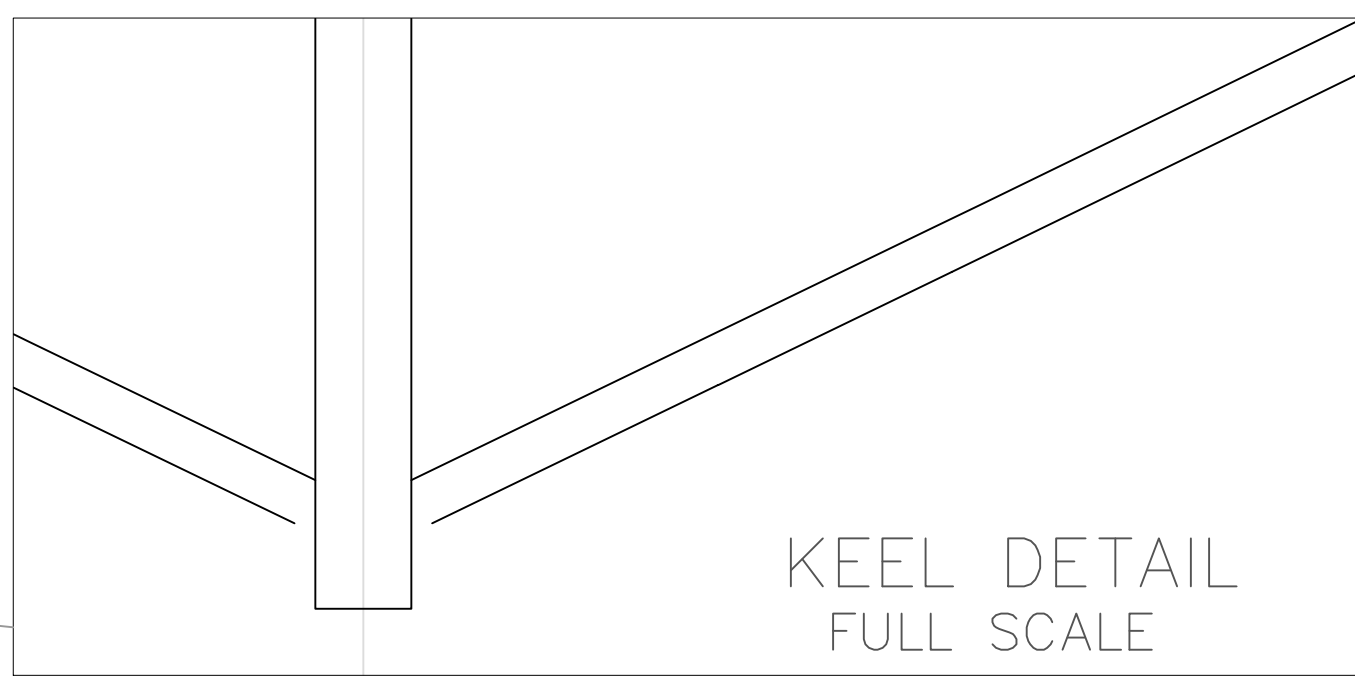
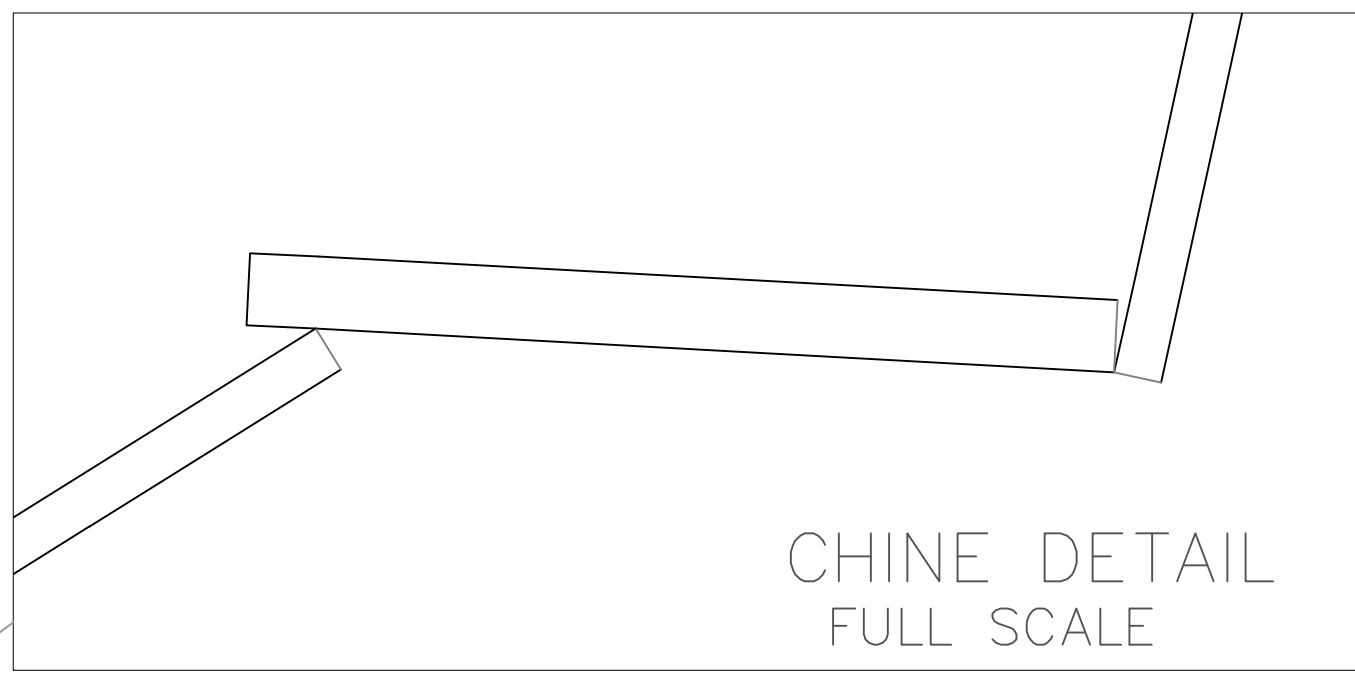
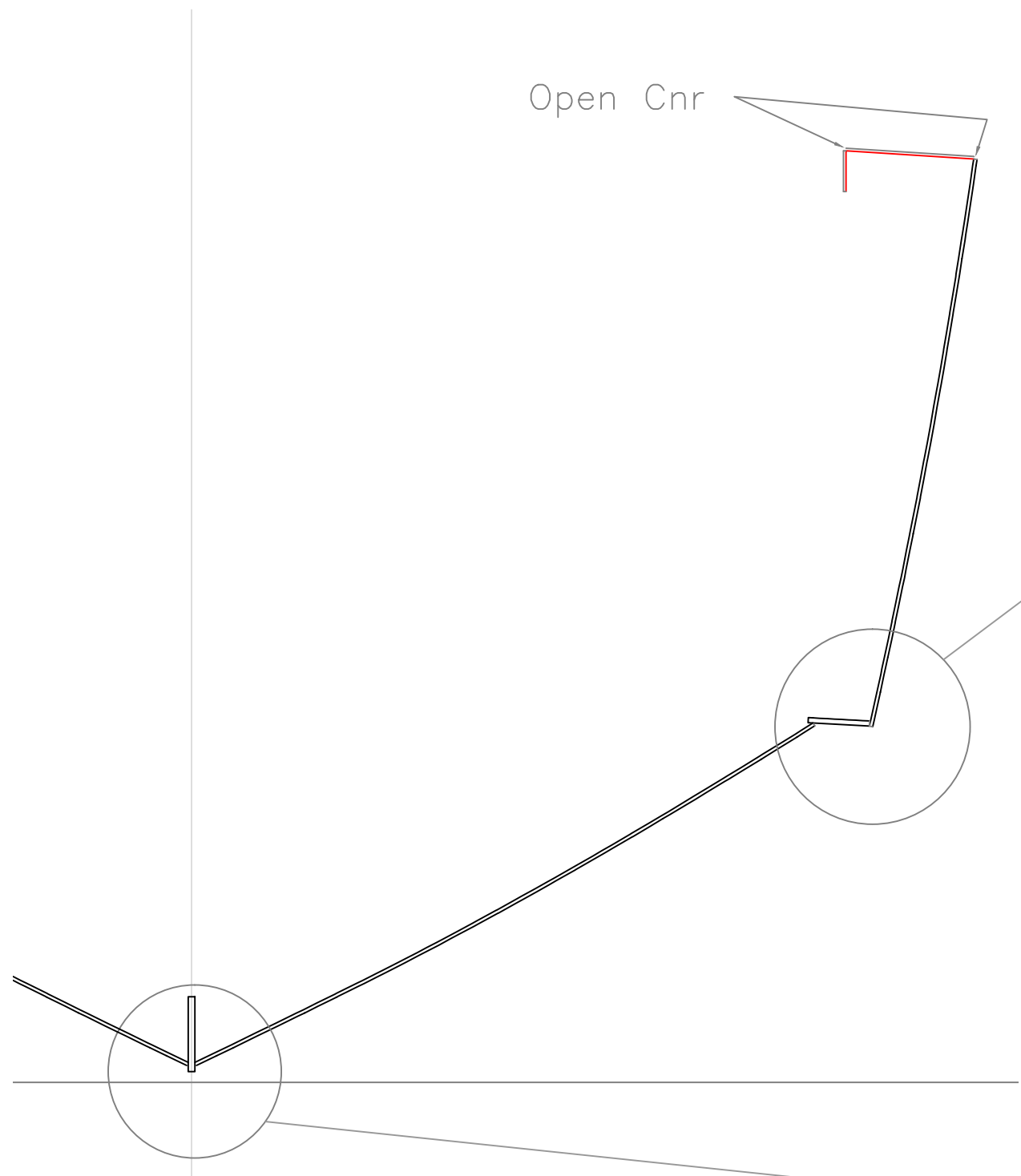


BOTTOM STRUCTURE		
RS-290, Deckelman		
SCALE NOTED	DES/DWN WAL/JCC	DATE 12/30/14
REV.		DESCRIPTION
Response Marine, Inc.		DWG NO. 493-2-2
Newburyport, MA, www.responsemarine.com		



TOPSIDES STRUCTURE		
RS-290, Deckelman		
SCALE 1/2" = 1'	DES/DWN WAL/JCC	DATE 12/30/14
Response Marine, Inc. Newburyport, MA, www.responsemarine.com		SHEET DWG NO. 493-2-3

REV.	DESCRIPTION

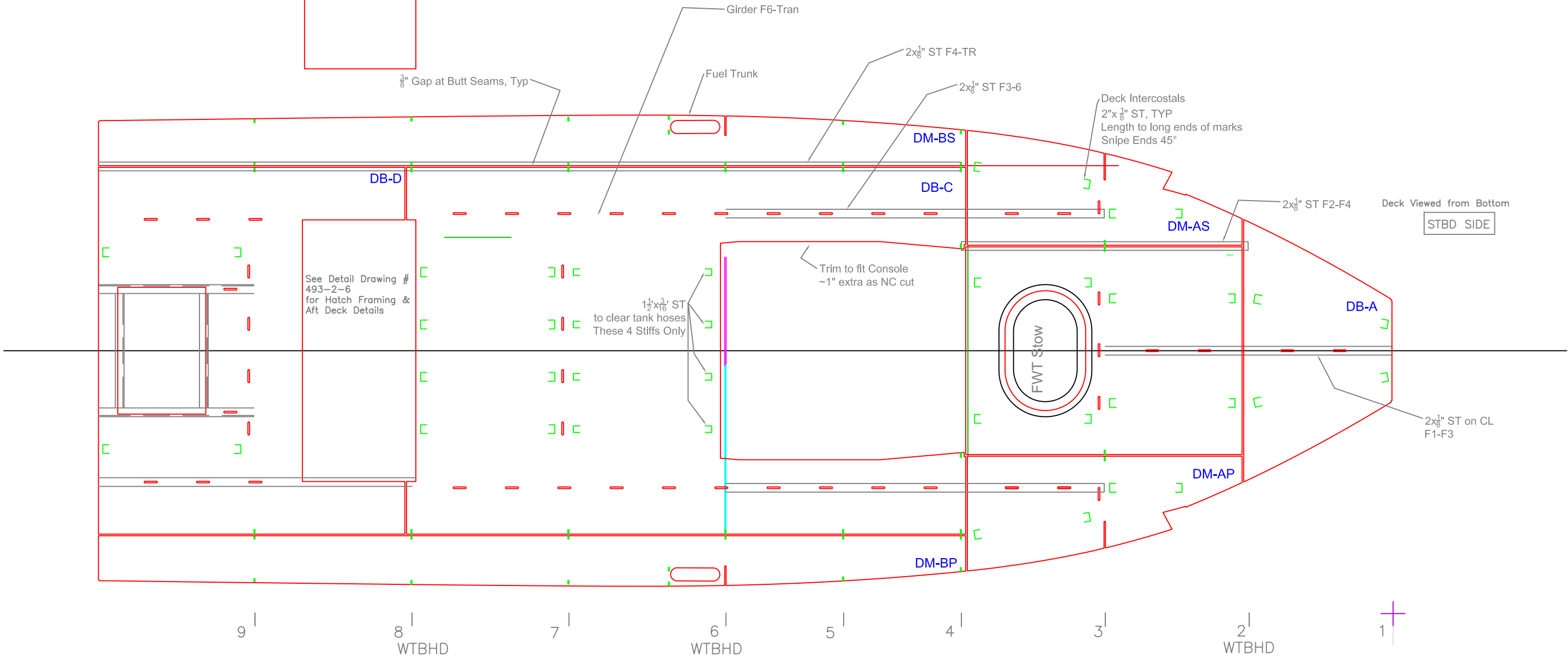


HULL JOINT DETAILS		
RS-290, Deckelman		
SCALE NOTED	DES/DWN WAL/JCC	DATE 12/30/14
Response Marine, Inc. Newburyport, MA, www.responsemarine.com		SHEET DWG NO. 493-2-4

REV.	DESCRIPTION

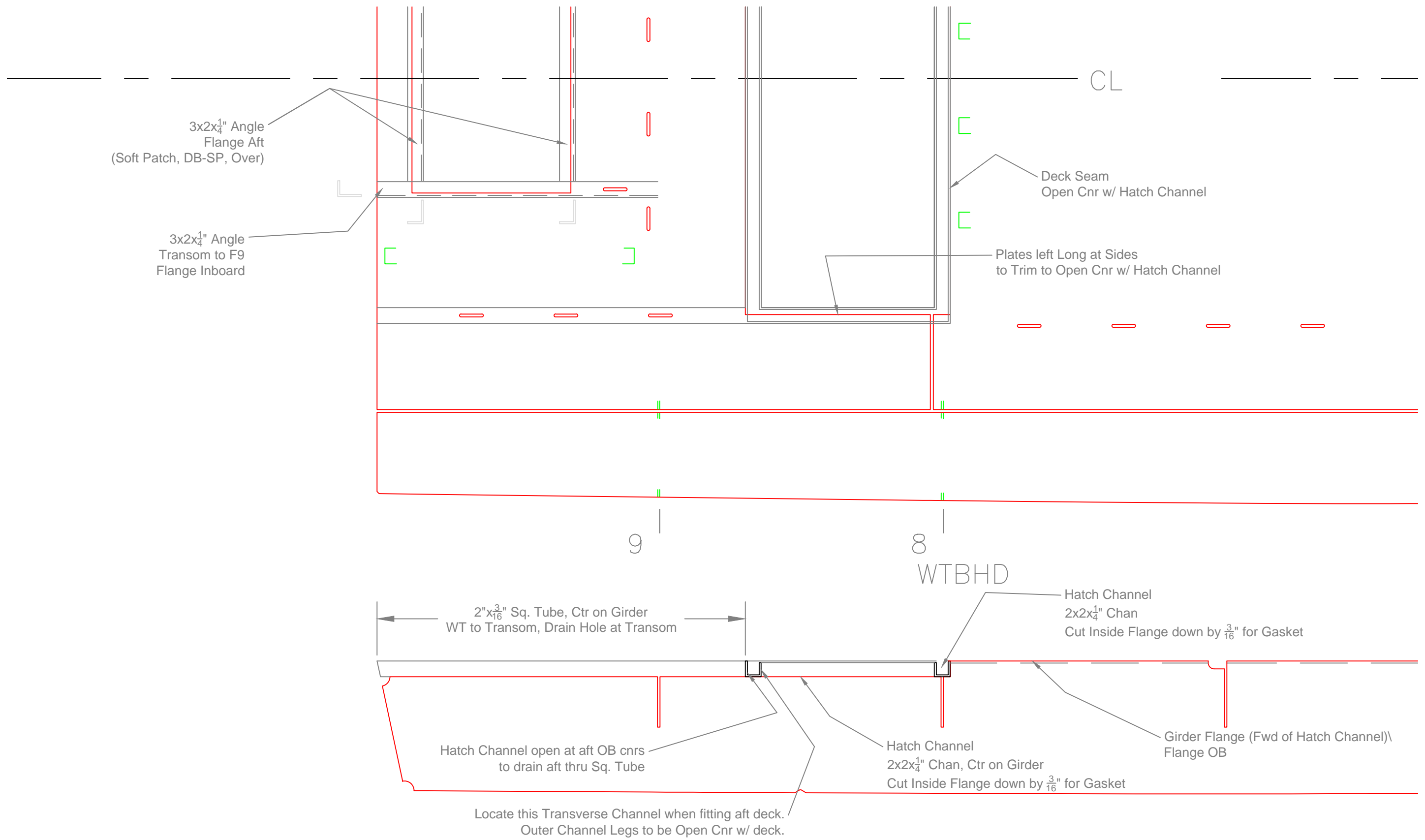
DB-HH
Soft Patch
at Transom

DB-H
Deck Hatch



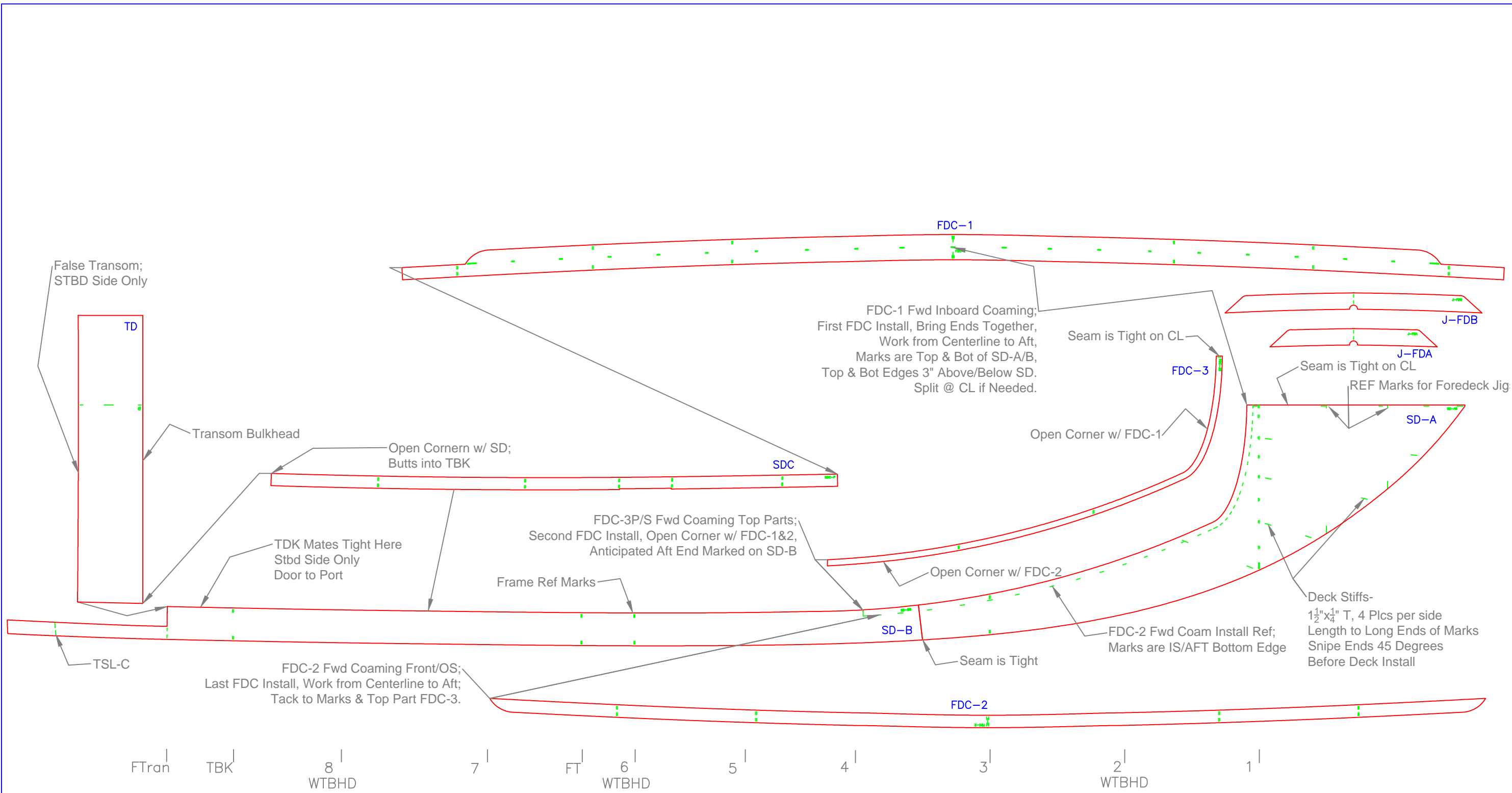
COCKPIT DECK		
RS-290, Deckelman		
SCALE 1/2" = 1'	DES/DWN WAL/JCC	DATE 12/30/14
Response Marine, Inc. Newburyport, MA, www.responsemarine.com		SHEET DWG NO. 493-2-5

REV.	DESCRIPTION



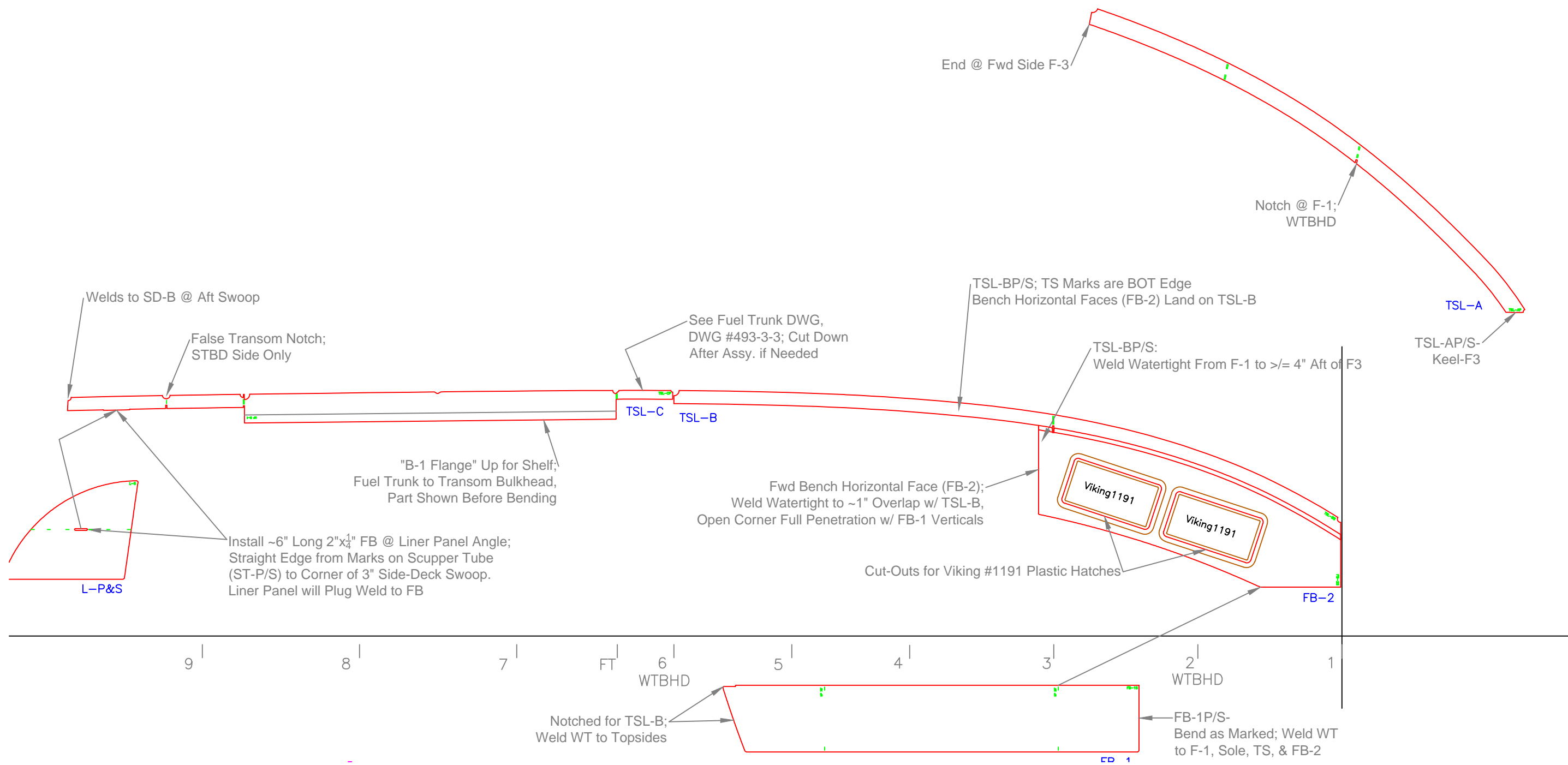
COCKPIT DECK- AFT DETAIL		
RS-290, Deckelman		
SCALE 1" = 1'	DES/DWN WAL/JCC	DATE 12/30/14
Response Marine, Inc. Newburyport, MA, www.responsemarine.com		SHEET DWG NO. 493-2-6

REV.	DESCRIPTION



SIDE DECKS & COAMINGS		
RS-290, Deckelman		
SCALE 1/2" = 1'	DES/DWN WAL/JCC	DATE 12/30/14
Response Marine, Inc. Newburyport, MA, www.responsemarine.com		SHEET DWG NO. 493-2-7

REV.	DESCRIPTION

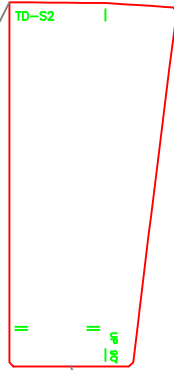


TOPSIDE STRINGERS		
RS-290, Deckelman		
SCALE 1/2" = 1'	DES/DWN WAL/JCC	DATE 12/30/14
Response Marine, Inc.		SHEET
Newburyport, MA, www.responsemarine.com		DWG NO. 493-2-8

REV.	DESCRIPTION

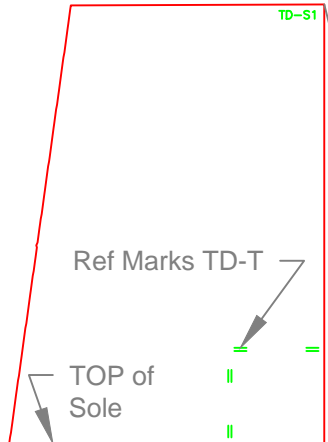
OB Tran Door Face, TB-S2;
(TBK-TS), Installs Above ST-P,
Part Shown Before Bending

TD-S2



TOP of ST-P

TD-S1



Ref Marks TD-T

TOP of Sole

Lk'g FWD
Install Marks & Stiffeners Aft
Install AFTER Hull & Deck Assy.

NOTES:
AFTER Deck Assy., Assembly Order:
1) Transom Bulkhead (TBK)
2) Scupper Tubes Port & Stbd (ST-P&S)
3) False Tran (FTR), Tran Deck (TD),
& Tran Door IB Face (TD-S1)
4) Liners Port & Stbd (L-P&S)
5) Tran Door OB Face (TD-S2)
6) Tran Door Threshold (TD-T)

IB Tran Door Face, TB-S1;
(TBK-FTR), Full Height From Sole

Open Corner w/ Transom Deck (TD)

SD-B Runs Over
TBK, P&S

Ref Marks TD-S2,
PORT Side Only

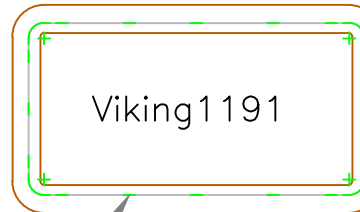
Port Side Liner Panel (L-P),
TBK-Transom.
Sbbd Panel Dies @ F-Tran

BOT of TSL-C

All Panels Open Cnrr
@ Tran Door Cut-Out

Ref Marks for TD-T,
Transom Door Threshold

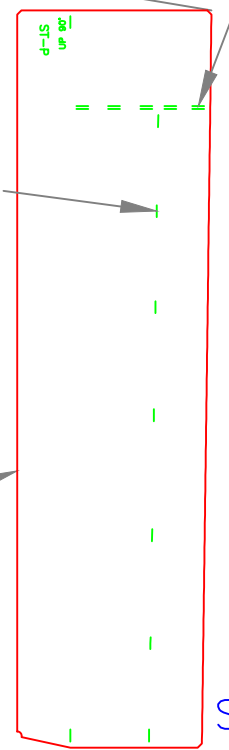
TBK-P



Tight Seam;
AFTER BULKHEAD
INSTALLATION

Ref Marks OS
Liner Panels

Ref Marks ST-P/S



ST-P/S

Tran Door Threshold (TD-T),
TB-S1 to Port Liner Panel (L-P);
Part Shown Before Bending.
Last Transom Area Install

Cockpit
Deck

Cut-Out Marks for Viking #1191 Plastic Hatches;
Stiffen Bulkhead @ Builder Discretion After Final
Transom Locker Design (i.e. Livewell, Hatches, etc.)

Scupper Tubes Port & Stbd (ST-P/S),
Transom Bulkhead (TBK) to Transom (TR);
Part Shown Before Bending, Weld WT.
NOTE: Drain Engine Deck Thru Scupper Tube
Vertical Side or Transom @ Builder's Discretion

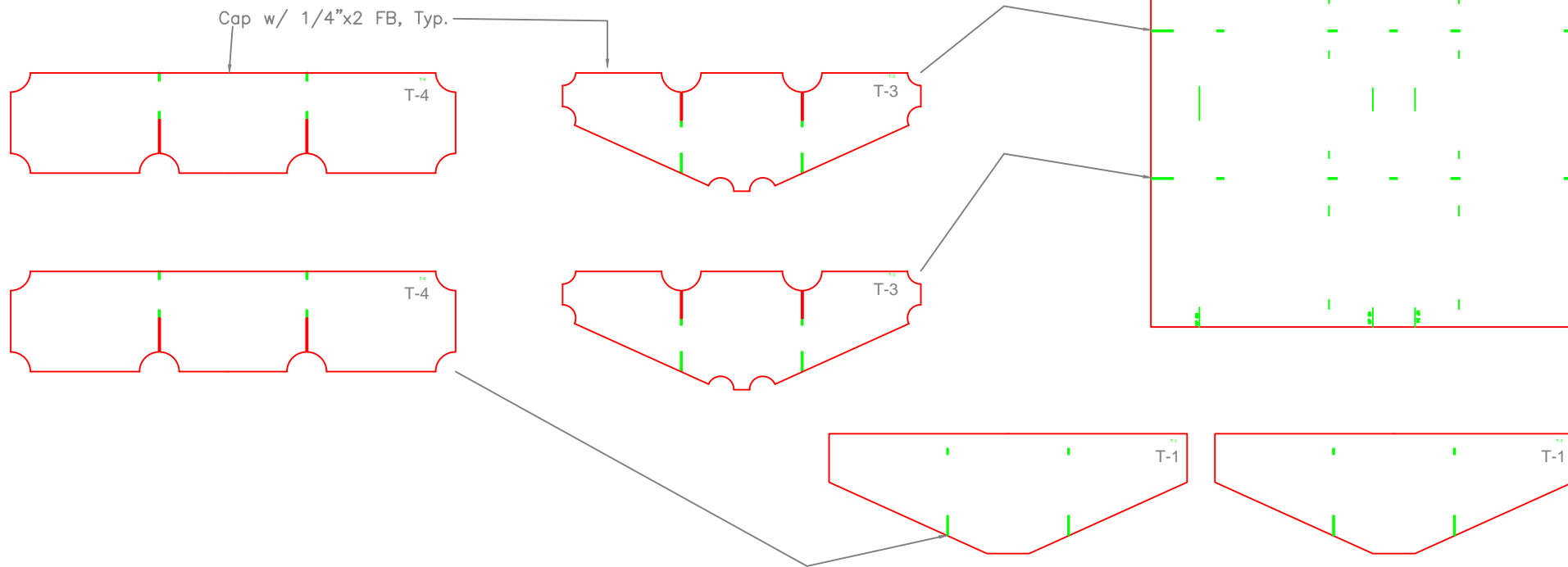
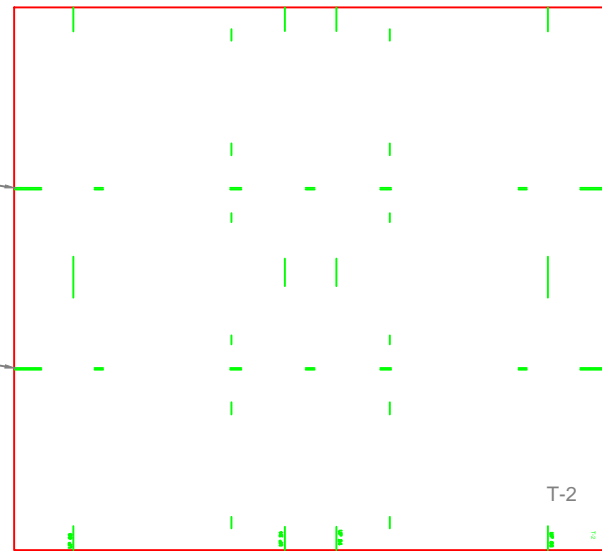
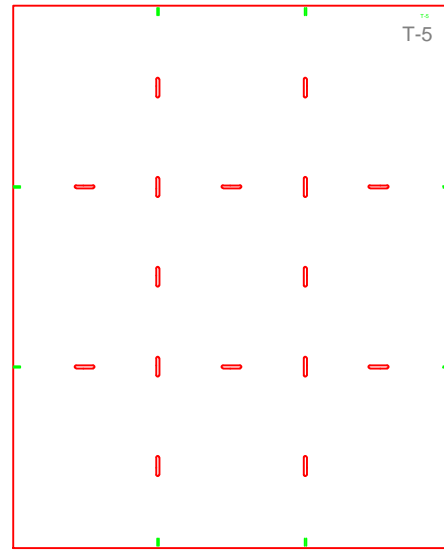


TD-T

TBK

TRANSM BULKHEAD		
RS-290, Deckelman		
SCALE 1" = 1'	DES/DWN WAL/JCC	DATE 12/30/14
Response Marine, Inc.		SHEET
Newburyport, MA, www.responsemarine.com		DWG NO. 493-2-9

REV.	DESCRIPTION



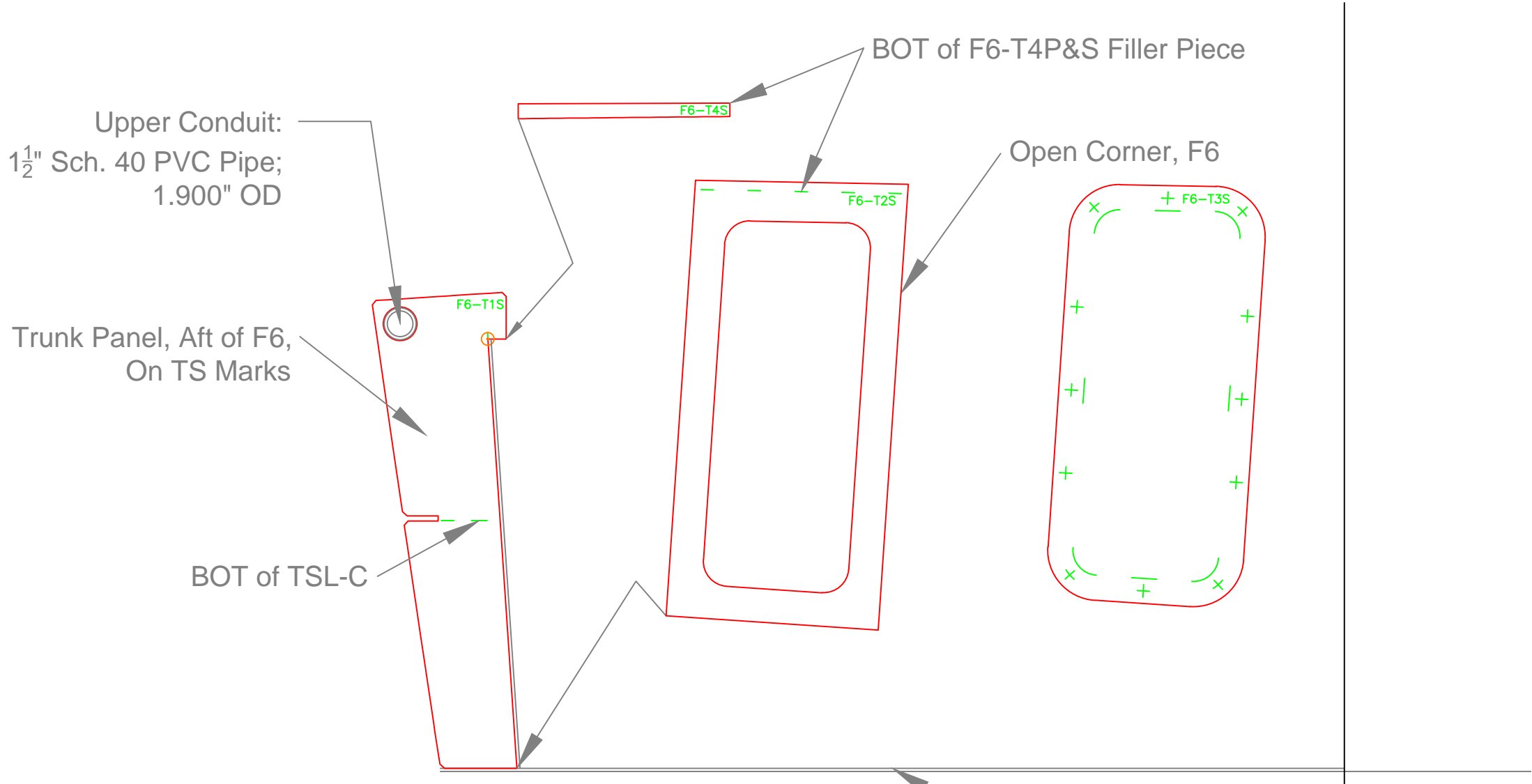
Gross Vol=217 gal
 200*.06= 12 gal ullage
 .75" FVV at CL= 11.8 gal
 1.5" FVV at 7.5" from front edge on transv CL = 16.7 gal
 (Plan on using 1.5FVV at 7.5" aft of Front Edge, on CL,
 with TVV's on fwd & aft CL's) (Aft TVV to be accessed at
 pickup location). Sender can be fwd or aft.



FUEL TANK- 217 gal. GROSS		
RS-290, Deckelman		
SCALE 1/2" = 1'	DES/DWN WAL/JCC	DATE 12/30/14
Response Marine, Inc. Newburyport, MA, www.responsemarine.com		SHEET DWG NO. 493-3-1

REV.	DESCRIPTION

Lk'g AFT
Install Marks FWD / OB



Note:
Parts are cut for Trunks Port & Stbd;
PORT- FUEL FILL/VENT TRUNK
STBD- BILGE TRUNK for BP Fwd of F6

Trunks

FUEL/BILGE TRUNK PANELS (P&S)

RS-290, Deckelman

SCALE 1-1/2" = 1'	DES/DWN WAL/JCC	DATE 12/30/14
----------------------	--------------------	------------------

Response Marine, Inc.

NEWBURYPORT, MA	WWW.RESPONSEMARINE.COM	DWG NO. 493-3-2
-----------------	------------------------	--------------------

REV.	DESCRIPTION

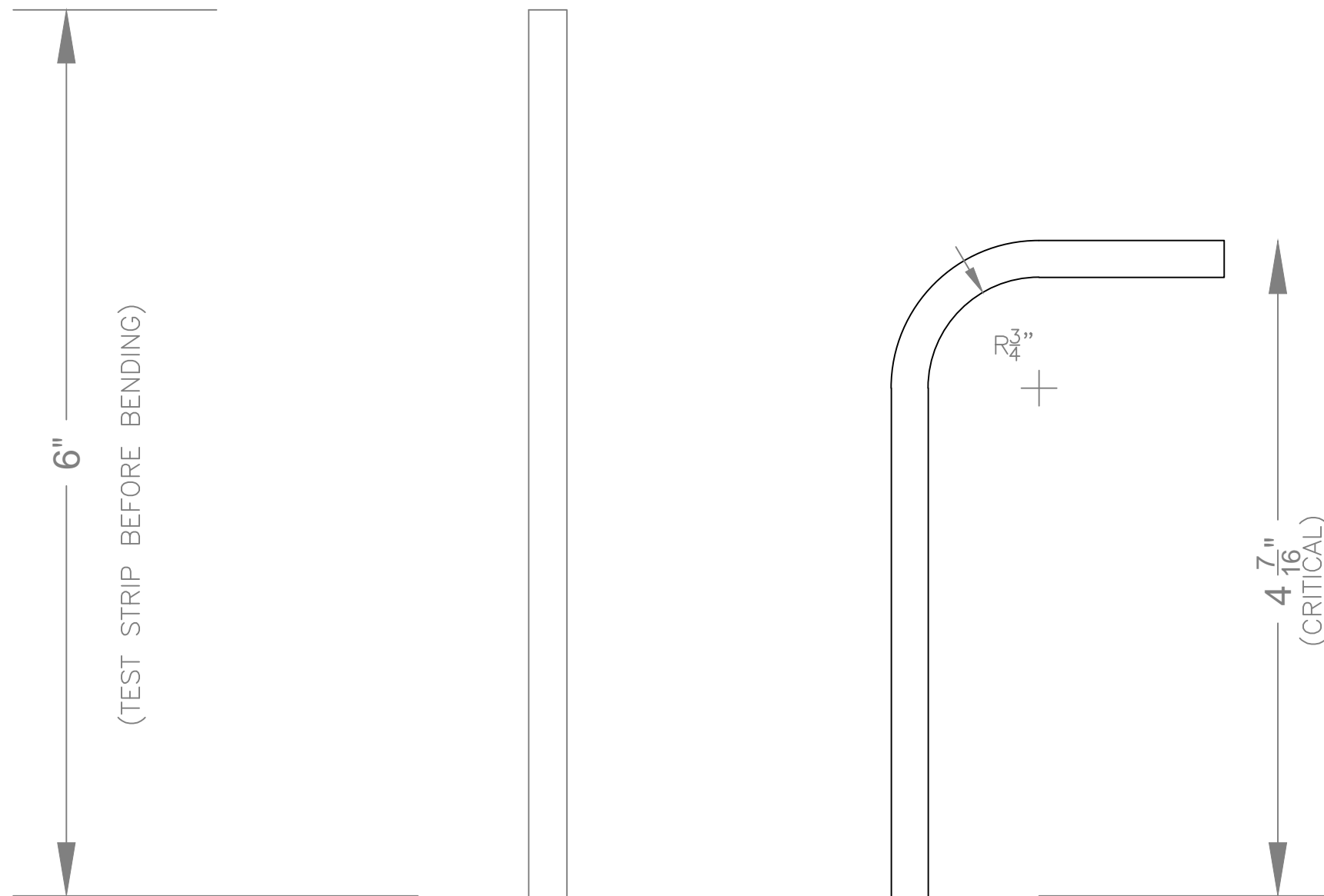
FRAME FLANGE BENDING: 1/4" 5083/86 H116 Stock

- 1) Confirm results with test strips for height to Top of Flange before bending frames.
- 2) Inside Bend Radius is 3/4", but may be as small as 3/8" provided there is no evidence of cracking. Bend is 90°.
- 3) Confirm Radius & Adjust Back Gauge to yield finished length of 6" test strip as shown below.
- 4) This same set up applies to all parts listed at right.

APPLIES TO:

F2	Frame 2, WTBHD	1
F3	Frame 3	1
F4	Frame 4	1
F5	Frame 5, WTBHD	1
F6	Frame 6	1
F7	Frame 7	1
F8	Frame 8, WTBHD	1
F9	Frame 9	1
G-P	Girder, Port	1
G-S	Girder, Stbd	1
TSL-CP	Topsides Stringer, Port, Shelf, F5-SwoopLip	1
TSL-CS	Topsides Stringer, Stb, Shelf, F5-SwoopLip	1

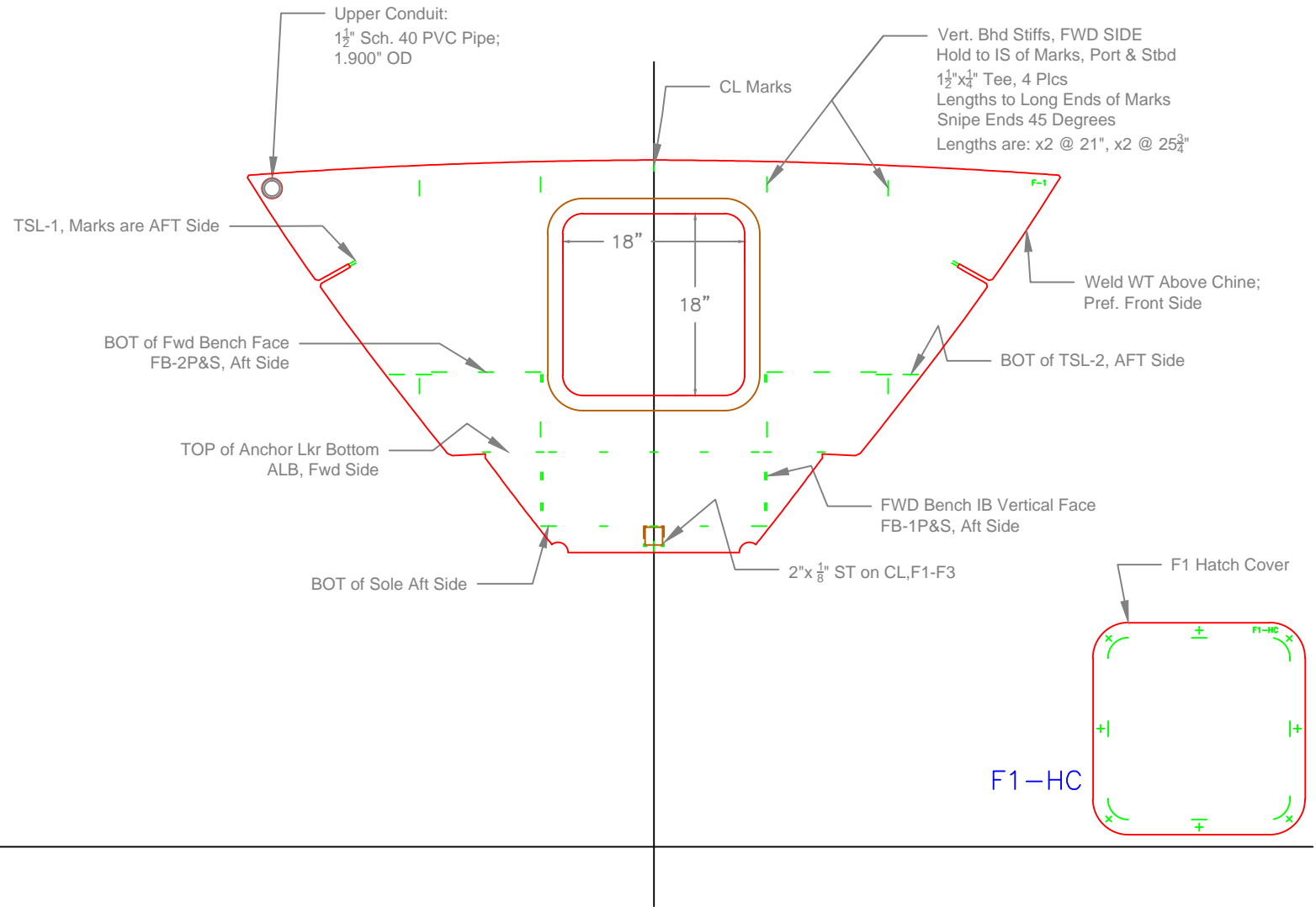
TOTAL PARTS: 12



BENDING FLANGE "B-1"		
RS-290, Deckelman		
SCALE	DES/DWN	DATE
FULL	WAL/JCC	12/30/14
Response Marine, Inc. Newburyport, MA, www.responsemarine.com		SHEET DWG NO. 493-B-1

REV. DESCRIPTION

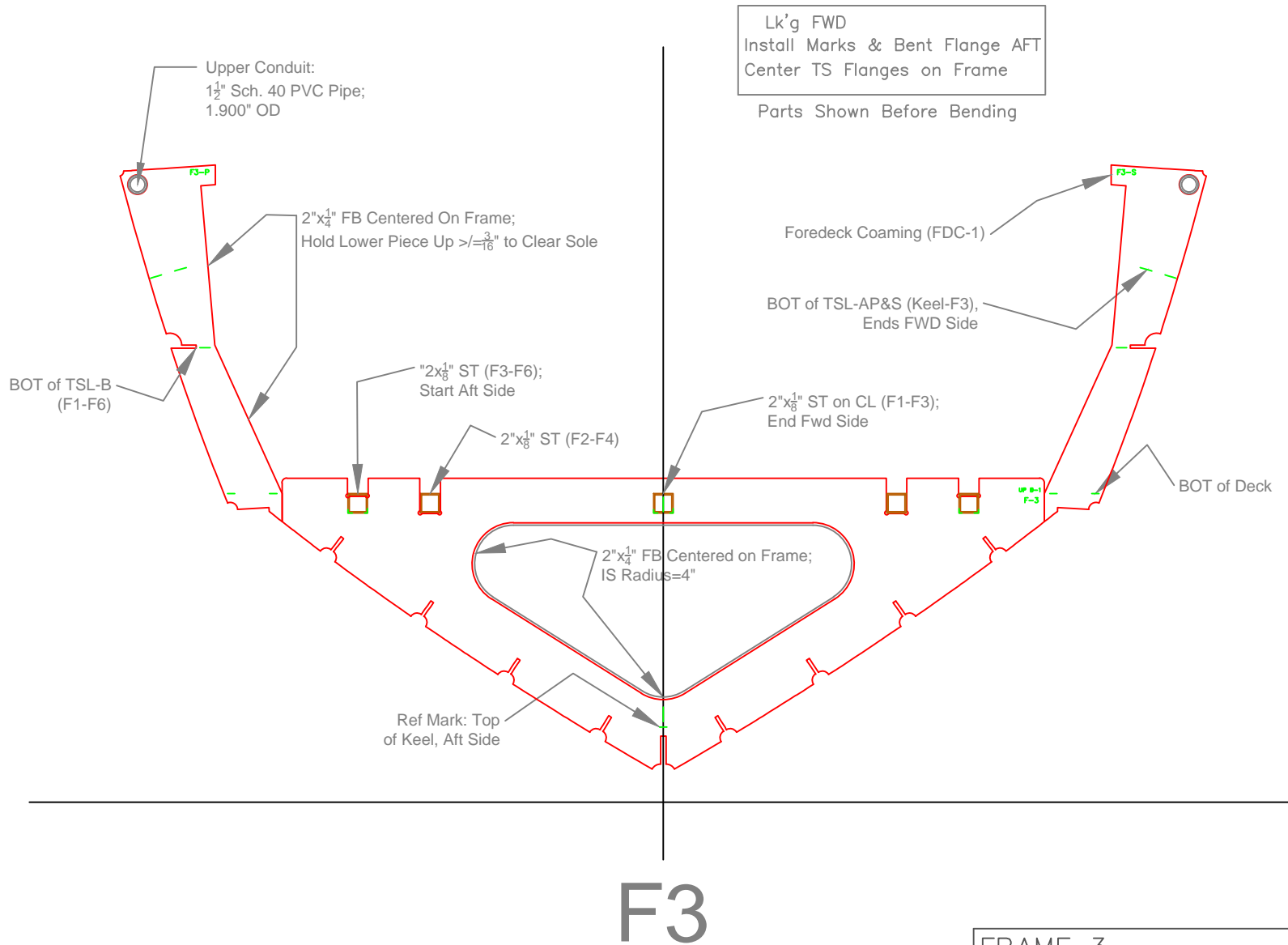
Lk'g FWD
Install Marks AFT & Stiffener FWD



F1

FRAME 1		
RS-290, Deckelman		
SCALE 3/4" = 1'	DES/DWN WAL/JCC	DATE 12/30/14
Response Marine, Inc.		SHEET
Newburyport, MA, www.responsemarine.com		DWG NO. 493-F-1

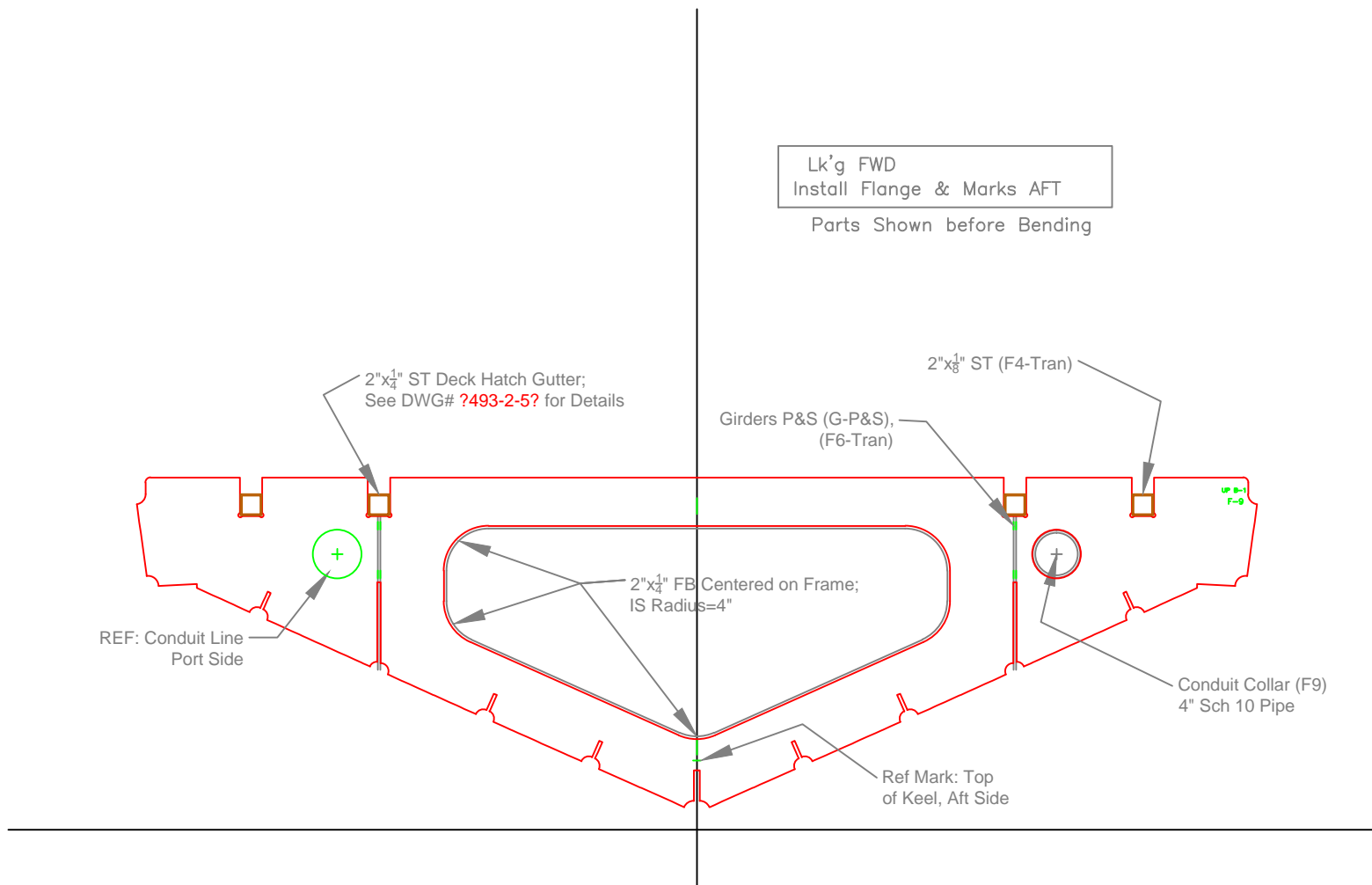
REV.	DESCRIPTION



F3

FRAME 3		
RS-290, Deckelman		
SCALE 3/4" = 1'	DES/DWN WAL/JCC	DATE 12/30/14
Response Marine, Inc. Newburyport, MA, www.responsemarine.com		SHEET DWG NO. 493-F-3

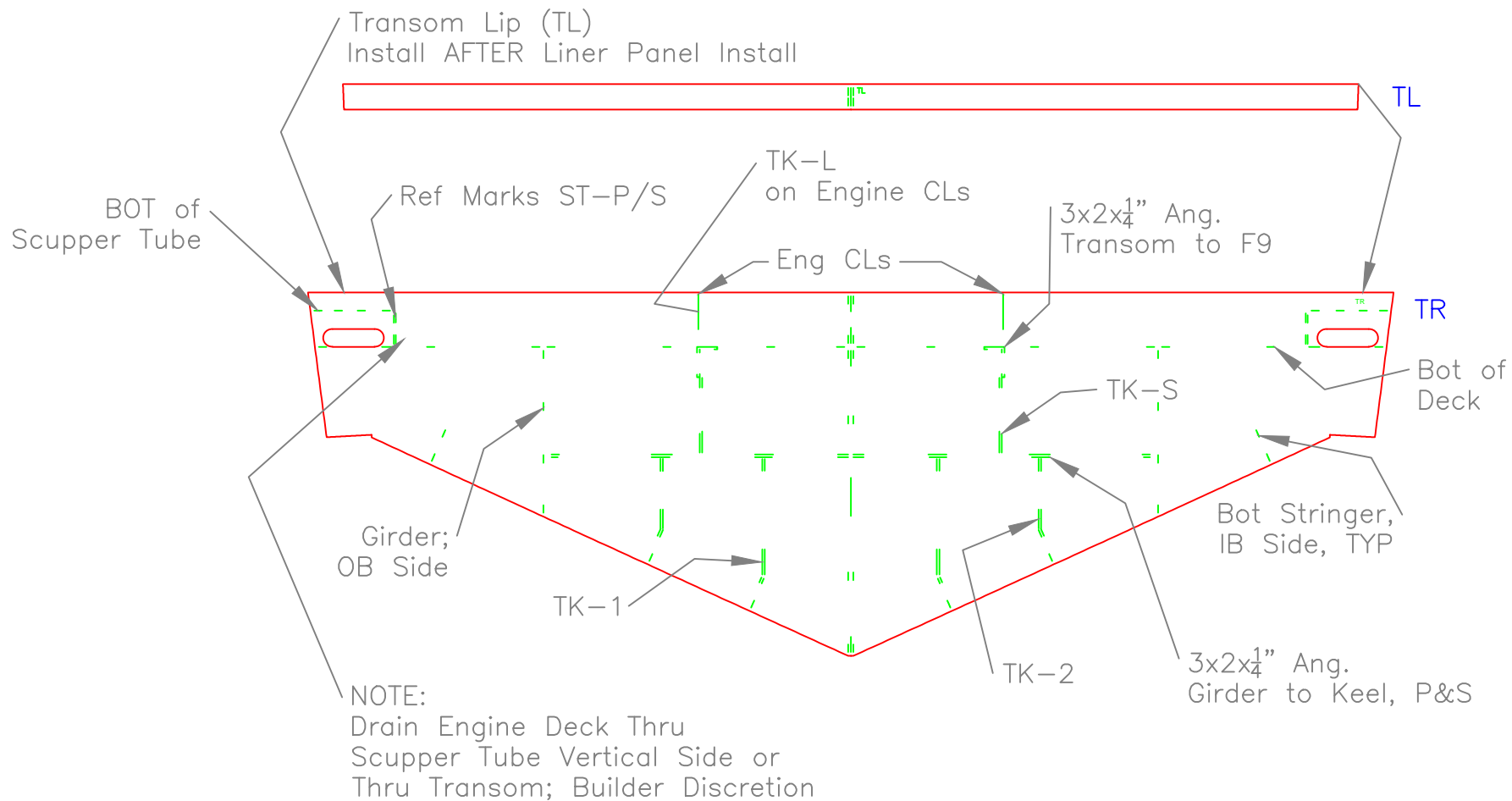
REV.	DESCRIPTION



F9

FRAME 9		
RS-290, Deckelman		
SCALE 3/4" = 1'	DES/DWN WAL/JCC	DATE 12/30/14
Response Marine, Inc. Newburyport, MA, www.responsemarine.com		SHEET DWG NO. 493-F-9

REV.	DESCRIPTION



TRANSOM (DEVELOPED)		
RS-290, Deckelman		
SCALE 3/4" = 1'	DES/DWN WAL/JCC	DATE 12/30/14
Response Marine, Inc. Newburyport, MA, www.responsemarine.com		SHEET DWG NO. 493-F-T

REV.	DESCRIPTION