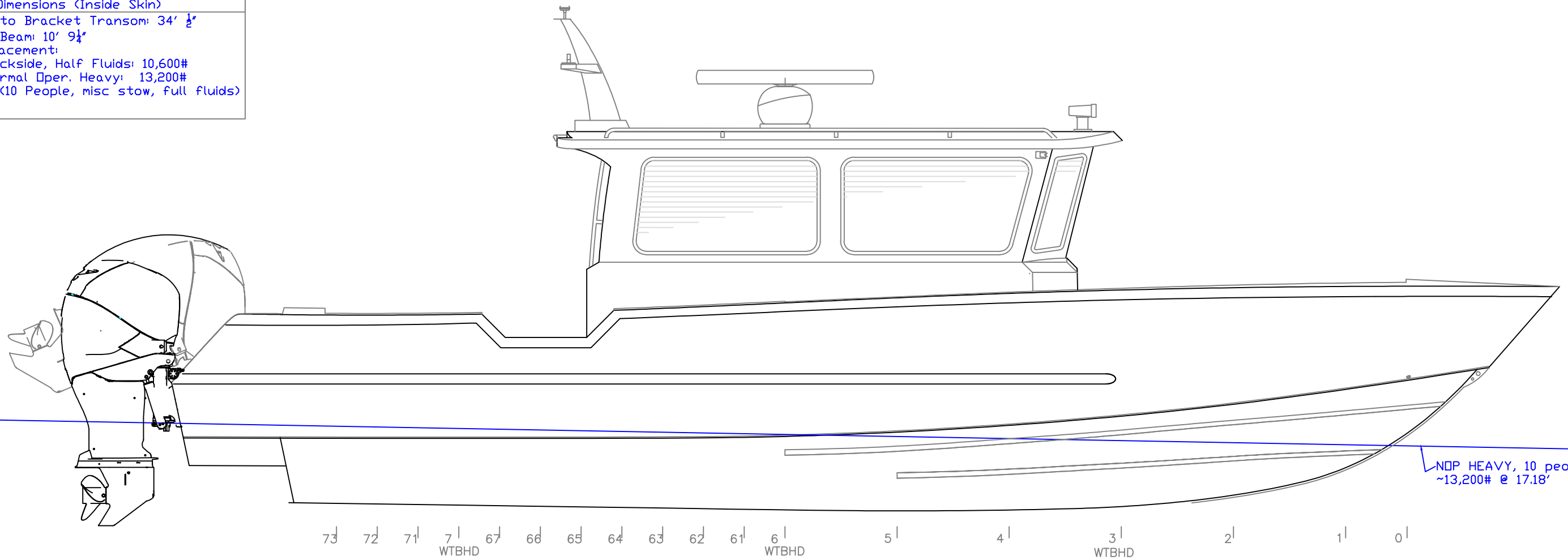
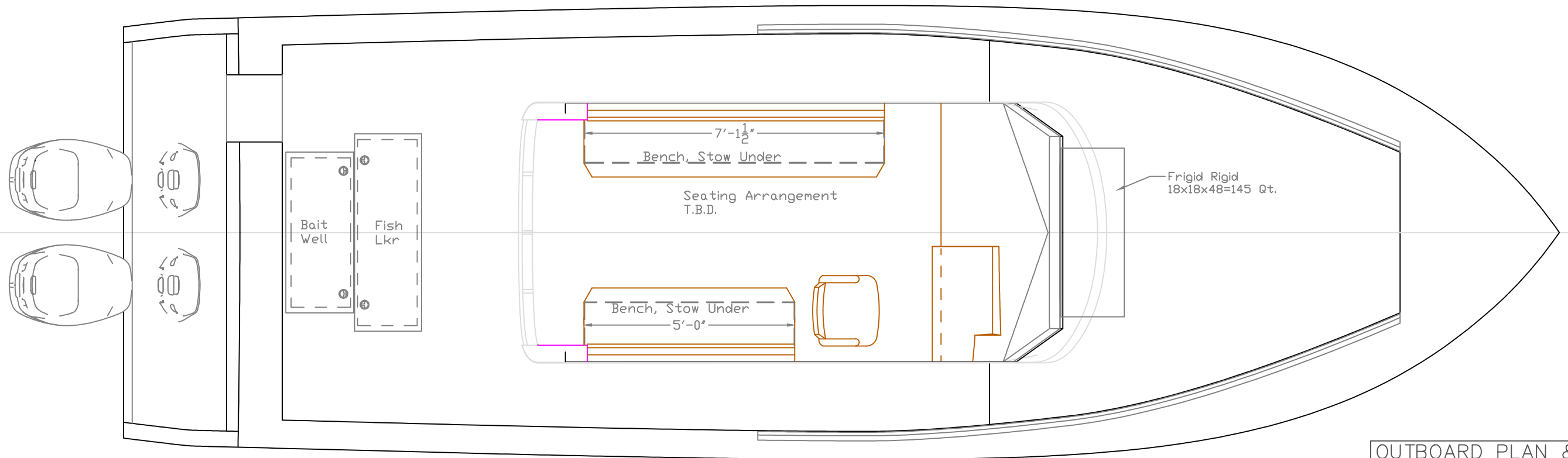


General Dimensions (Inside Skin)
 LOA to Bracket Transom: 34' ½"
 Hull Beam: 10' 9¼"
 Displacement:
 Dockside, Half Fluids: 10,600#
 Normal Oper. Heavy: 13,200#
 (10 People, misc stow, full fluids)



NDP HEAVY, 10 people, full fluids
 ~13,200# @ 17.18'

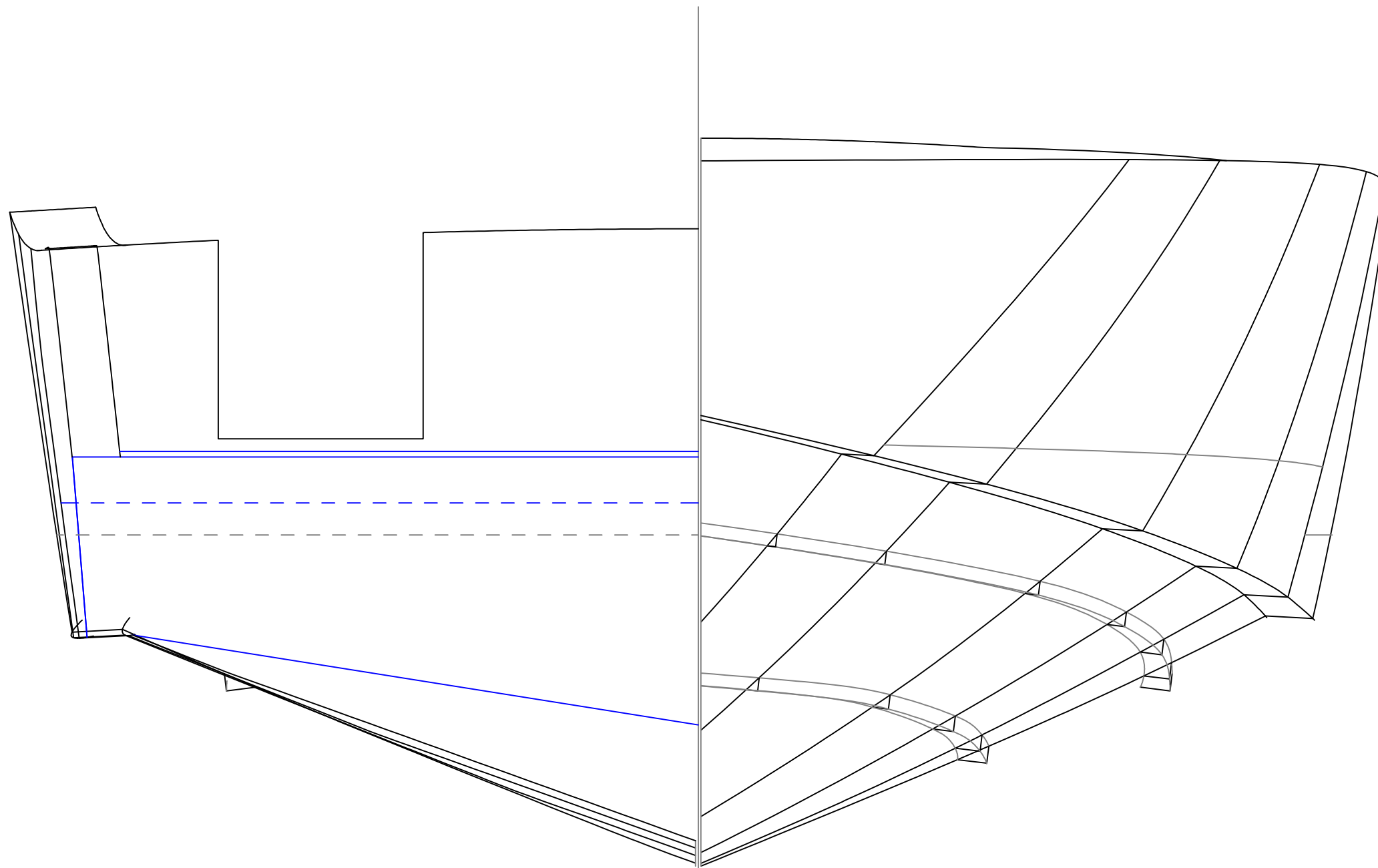


Note: Lines are Inside Skins



REV. DESCRIPTION

OUTBOARD PLAN & PROFILE		
SJC, V34 WalkAround		
SCALE 3/8"=1'	DES/DWN WAL/JCC	DATE 1/31/16
Response Marine, Inc.		SHEET
Newburyport, MA, www.responsemarine.com		DWG NO. 516-1



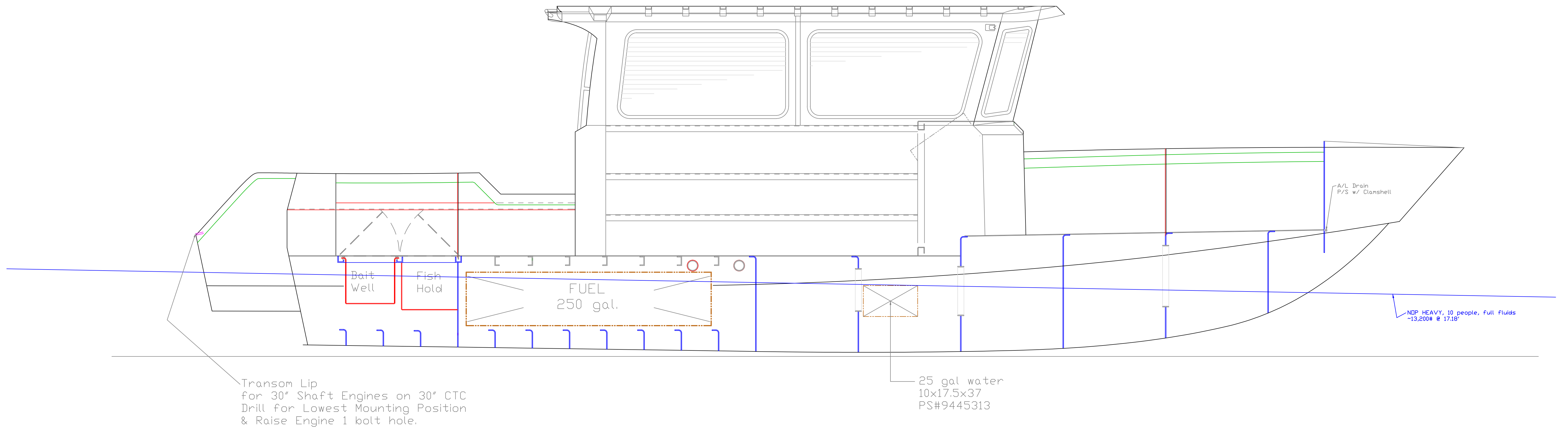
Body Plan
(Frames)

Note: Lines are Inside Skins



REV.	DESCRIPTION

OUTBOARD BODY PLAN		
SJC, V34 WalkAround		
SCALE 1"=1'	DES/DWN WAL/JCC	DATE 1/31/16
Response Marine, Inc. Newburyport, MA, www.responsemarine.com		SHEET DWG NO. 516-2



Note: Lines are Inside Skins



REV. DESCRIPTION

INBOARD PROFILE		
SJC, V34 WalkAround		
SCALE 3/4"=1'	DES/DWN WAL/JCC	DATE 1/31/16
SHEET		DWG NO. 516-3D
Response Marine, Inc. Newburyport, MA, www.responsemarine.com		