

NC Parts

Response Marine, Inc. Plaz Parts for #276- Chester 21' Skiff
 File: RMIDes\Cianbro 22\Chester 21
 revised: 12/6/06

Print Date: 12/06/2006

3/16" Parts- 5052

<u>Part #</u>	<u>Pieces</u>	<u>Description</u>	<u>Stock</u>
S-A	2	Sole (fwd)	3A-1, 3A-2
S-B	2	Sole (mid)	3A-1, 3A-2
S-C	2	Sole (aft)	3A-1, 3A-2
CF	1	Console Face	3A-4
CS-A	1	Console Side	3A-4
CS-B	1	Console Side	3A-4
D-A	1	Bow Deck	3A-3
	10	Sub Total	

3/16" Parts- 5083/5086

<u>Part #</u>	<u>Pieces</u>	<u>Description</u>	<u>Stock</u>
BG-1A	2	Bottom Longitudinal (Girder) 1A	3-3
BG-2A	2	Bottom Longitudinal (Girder) 2A	3-3
BG-3A	2	Bottom Longitudinal (Girder) 3A	3-1, 3-2
BS	2	Bow Stiffeners	3-2
CB	1	Console Back	3-2
CS-1	2	Chine Stiffeners (F2-Bow)	3-3
D-B	2	Side Decks (Aft)	3-3
F1	1	Frame 1	3-2
F2	1	Frame 2	3-2
F3	1	Frame 3	3-2
F4	1	Frame 4	3-2
F5	1	Frame 5	3-2
F6B	2	Frame 6 Body (halves)	3-2
F6P	1	Frame 6, Upper Port	3-2
F6S	1	Frame 6, Upper Stbd	3-2
FDC	1	Fwd Deck Coaming	3-3
SDC	2	Side Deck Coaming	3-3
TS-PA	1	Topsides, Port Fwd	3-1
TS-PB	1	Topsides, Port Aft	3-3
TS-SA	1	Topsides, Stbd Fwd	3-1
TS-SB	1	Topsides, Stbd Aft	3-3
	29	Sub Total	

NC Parts

1/4" Parts- 5083/5086

<u>Part #</u>	<u>Pieces</u>	<u>Description</u>	<u>Stock</u>
BL-1	2	Bottom Longitudinal 1 (fwd)	4-1, 4-2
BL-2	2	Bottom Longitudinal 2 (fwd)	4-1, 4-2
BL-3	2	Bottom Longitudinal 3 (fwd)	4-1, 4-2
BOT-P	1	Bottom Plate, Port	4-2
BOT-S	1	Bottom Plate, Stbd	4-1
BOW	1	Bow	4-3
PK-S	4	Push Knee Sides	4-1, 4-3
PK-D	2	Push Knee Doubler	4-1, 4-3
PK-F	2	Push Knee, Face	4-3
TRAN	1	Transom	4-3
TSL-A	2	Topside Longitudinal (fwd)	4-1, 4-2
TSL-B	2	Topside Longitudinal (aft)	4-1, 4-2
	22	Sub Total	

3/8" Parts-5083/5086

<u>Part #</u>	<u>Pieces</u>	<u>Description</u>	<u>Stock</u>
CA	2	Chine, Fwd	6-1
CB	2	Chine, Aft	6-1
KA	1	Keel, Fwd	6-1
KB	1	Keel, Mid	6-1
KC	1	Keel, Aft	6-1
PPA	2	Pick Point (aft)	6-1
TL-1	1	Transom Lip, 2'x24"	6-1
TL-2	1	Transom Coaming Stock, 2"x~40"	6-1
	11	Sub Total	
	72	Total Cut Parts	

Stock

Response Marine, Inc.

Stock List

276-Chester 21 Cut #2

12/06/2006 REVISED 4/9/07

SHEET/PLATE For NC Cutting at Yarde

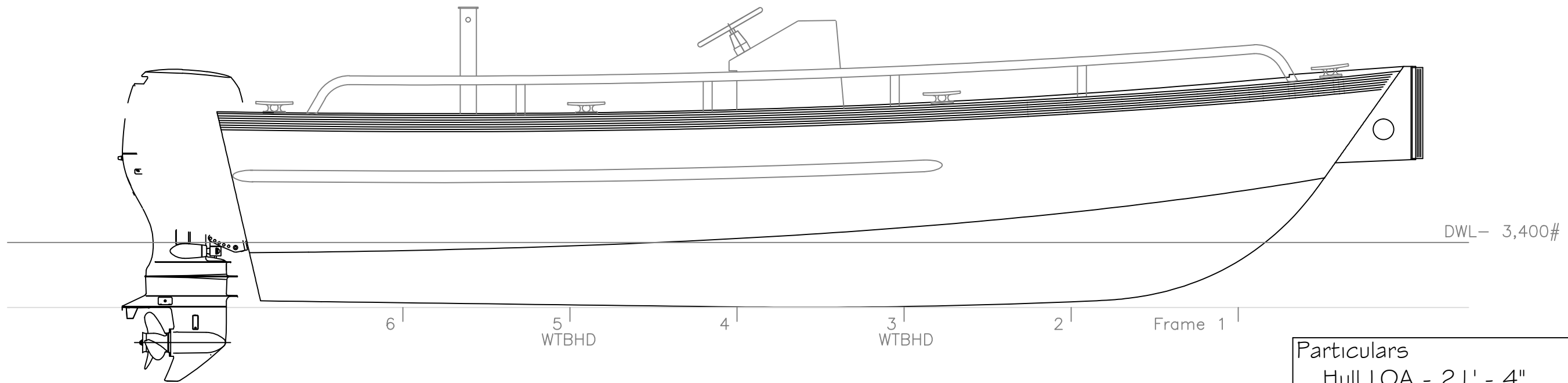
<u>QTY</u>	<u>Alloy</u>	<u>Thick</u>	<u>Width</u>	<u>Lngth</u>	approx. <u>lbs/ft^2</u>	<u>lbs</u>
3	5083 H116, Marine, ASTM B928 (Substitute 5086 H116 Marine if necessary)	0.190	72	240	2.7	972
2	5083 H116, Marine, ASTM B928 (Substitute 5086 H116 Marine if necessary)	0.250	60	240	3.6	720
1	5083 H116, Marine, ASTM B928 (Substitute 5086 H116 Marine if necessary)	0.250	48	144	3.6	173
1	5083 H116, Marine, ASTM B928 (Substitute 5086 H116 Marine if necessary)	0.375	60	144	5.4	324
4	5052 H32	0.190	48	144	2.7	518
Sub Total Plate to be						2,707

SHEET/PLATE (Stock, Do Not Cut)

<u>QTY</u>	<u>Alloy</u>	<u>Thick</u>	<u>Width</u>	<u>Lngth</u>	approx. <u>lbs/ft^2</u>	<u>lbs</u>
1	5052 H32	0.190	48	144	2.7	130
Total Sheet/Plate						2,837

EXTRUSION

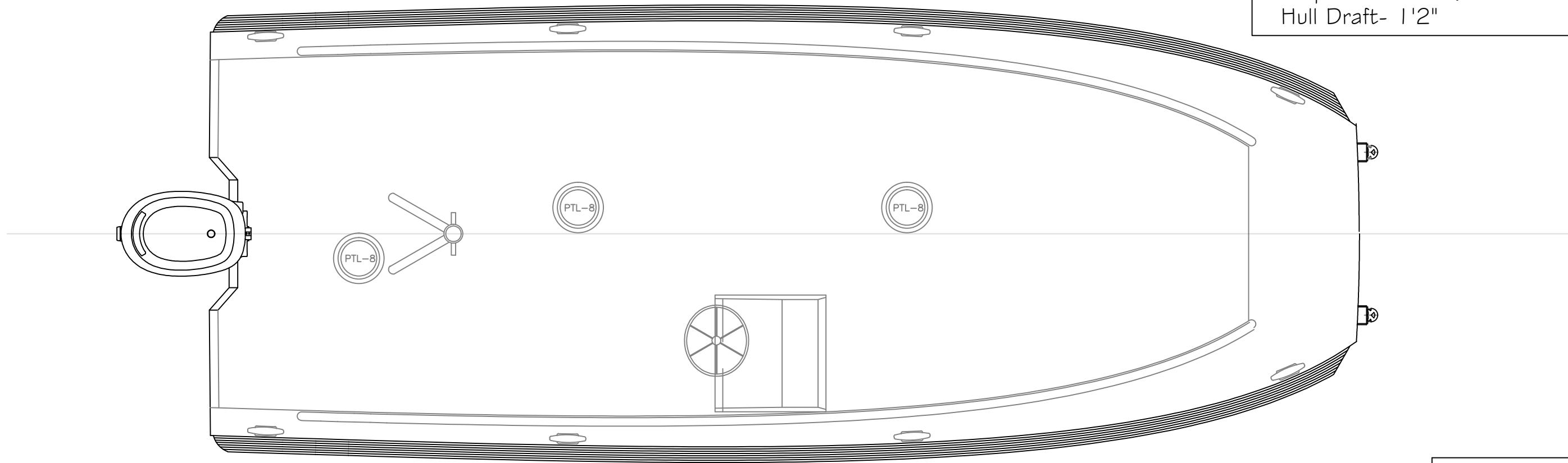
<u>QTY</u>	<u>Item</u>	<u>Alloy</u>	<u>Lgth (ft)</u>	<u>lbs/ft</u>	<u>lbs</u>
12	.190x1.50" Flat Bar	6061 T6	12	.34	49
4	.190 x 2" Flat Bar	6061 T6	12	.45	22
5	1" x .190" Angle	6061 T6	25	.4	50
1	1.50 x 1.50 x .250 Tee	6061 T6	25	.872	22
1	3" x 2.5" x2.6#l beam, AA	6061 T6	25	2.6	65
1	3" sch 40 Pipe	6061 T6	20	2.62	52
Sub Total					260
TOTAL					3,097



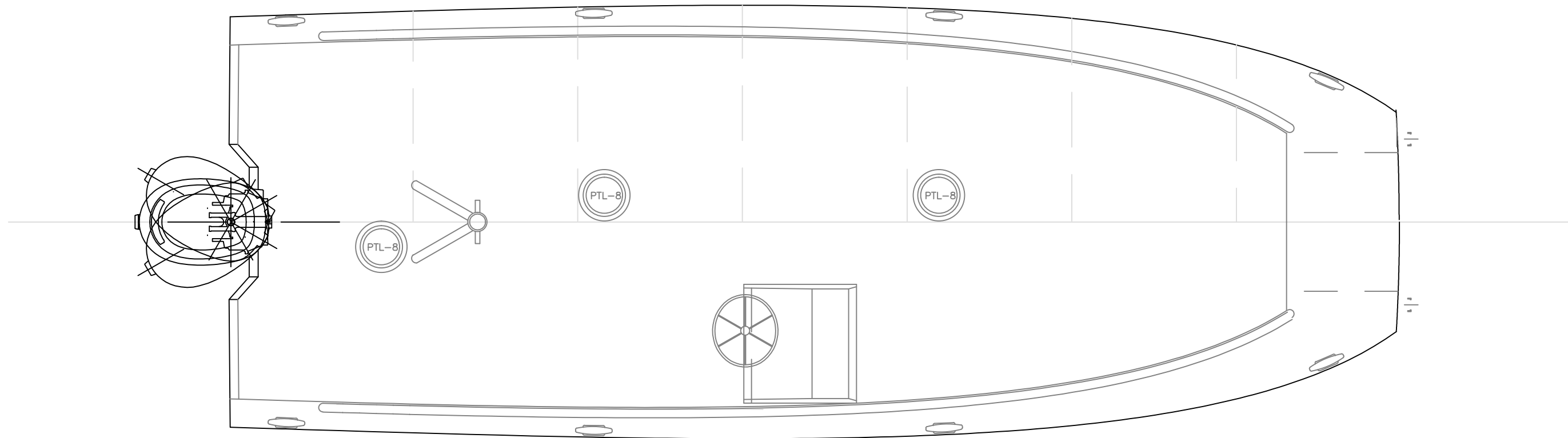
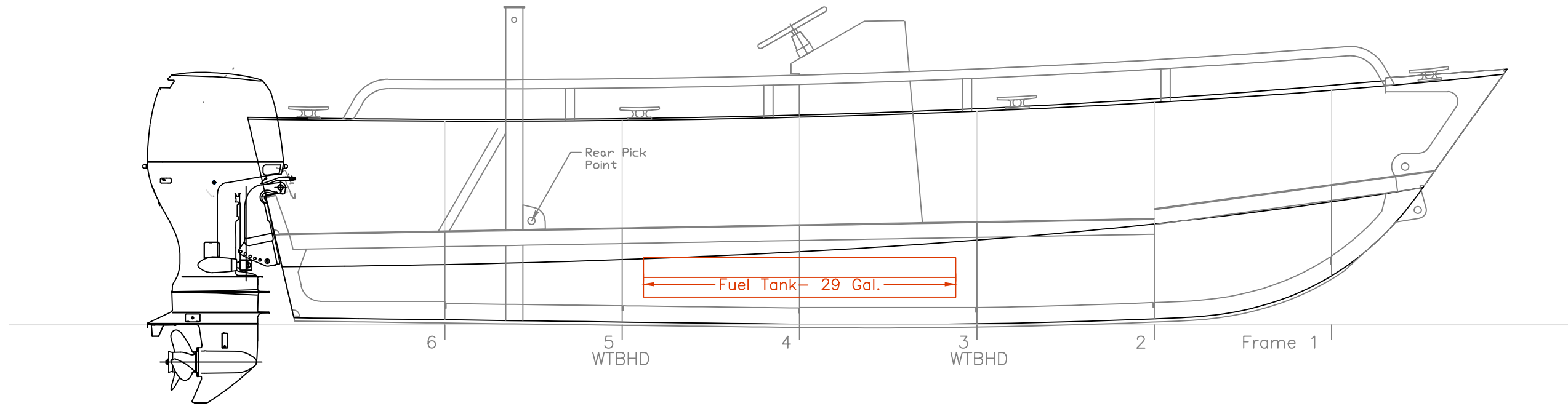
DWL- 3,400#

6 | 5 | 4 | 3 | 2 | Frame 1 |
 WTBHD WTBHD

Particulars
 Hull LOA - 21' - 4"
 Hull Beam- 8' - 0"
 LWL - 18' - 3"
 Displacement- 3,400# - 2 pax, 1/2 fuel
 Hull Draft- 1'2"



21' Skiff- CHESTER MARINE		
OUTBOARD VIEWS		
SCALE 1/2" = 1'	DES/DWN WAL	DATE 12/7/06
REV.	DESCRIPTION	SHEET
Response Marine, Inc. Newburyport, MA www.responsemarine.com		DWG NO. 276-01



21' Skiff- CHESTER MARINE

INBOARD VIEWS

SCALE 1/2" = 1'	DES/DWN WAL	DATE 12/7/06
--------------------	----------------	-----------------

Response Marine, Inc.
Newburyport, MA www.responsemarine.com

SHEET
DWG NO. 276-02

REV.	DESCRIPTION

Response Marine, Inc.

#276- Chester 21

12/6/06

Keel Points

Inches- sixteenths				Feet	
Horizontal	Vertical			Horizontal	Vertical

A to Origin
B to Origin
C to Origin
D to Origin
E to Origin

Aligned: Inches-Sixteenths

	A	B	C	D	E
--	---	---	---	---	---

B to
C to
D to

Response Marine, Inc.

#276- Chester 21

12/6/06

Keel Points

MILLIMETERS					
Horizontal	Vertical				

A to Origin
B to Origin
C to Origin
D to Origin
E to Origin

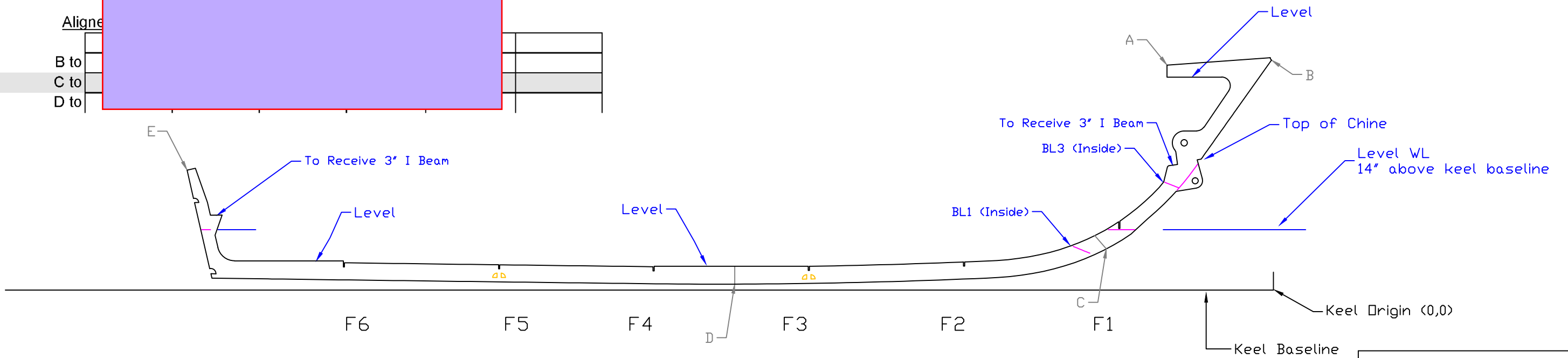
Aligned

B to
C to
D to

Notes:

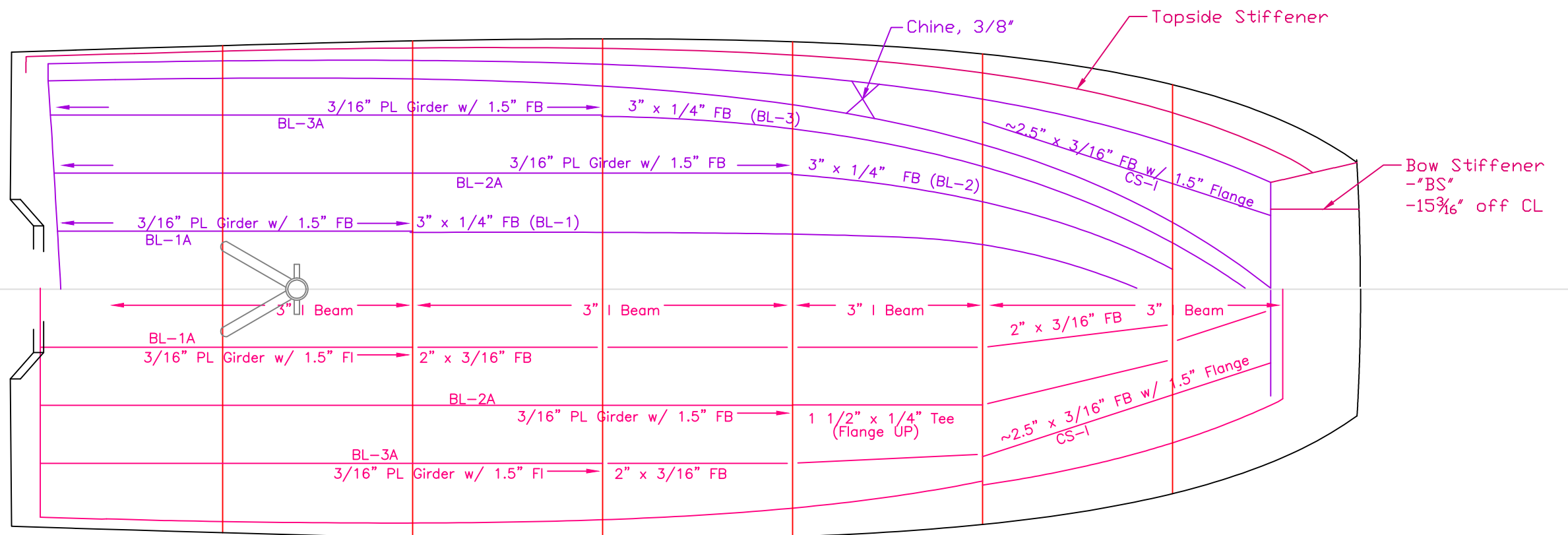
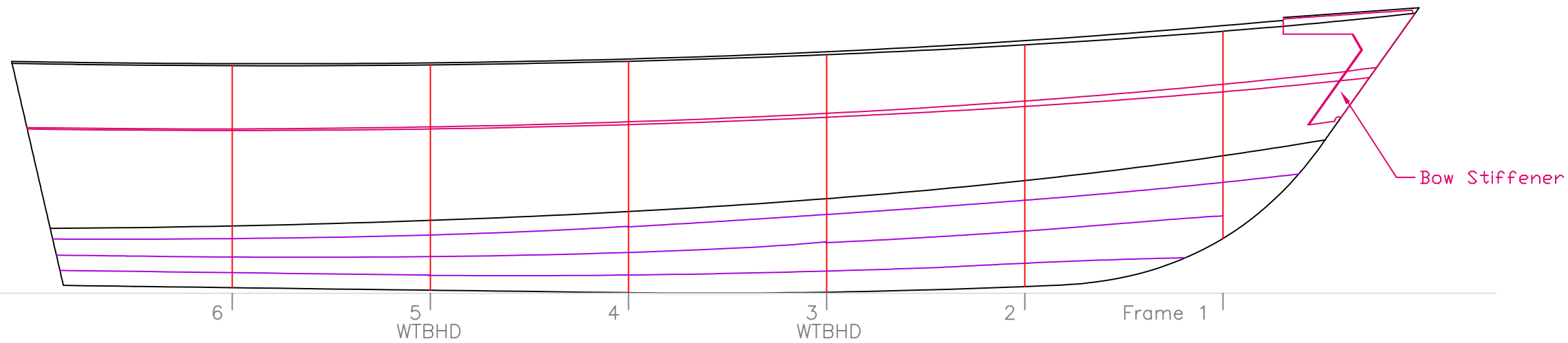
1) Aft of Frame 1, Top of Bottom Plate meets keel 5/8" (17mm) vertically above bottom of keel. Forward of Frame 1, exposed keel fairs to zero.

2) For frame heights on Keel, refer to Frame drawing FR-01.

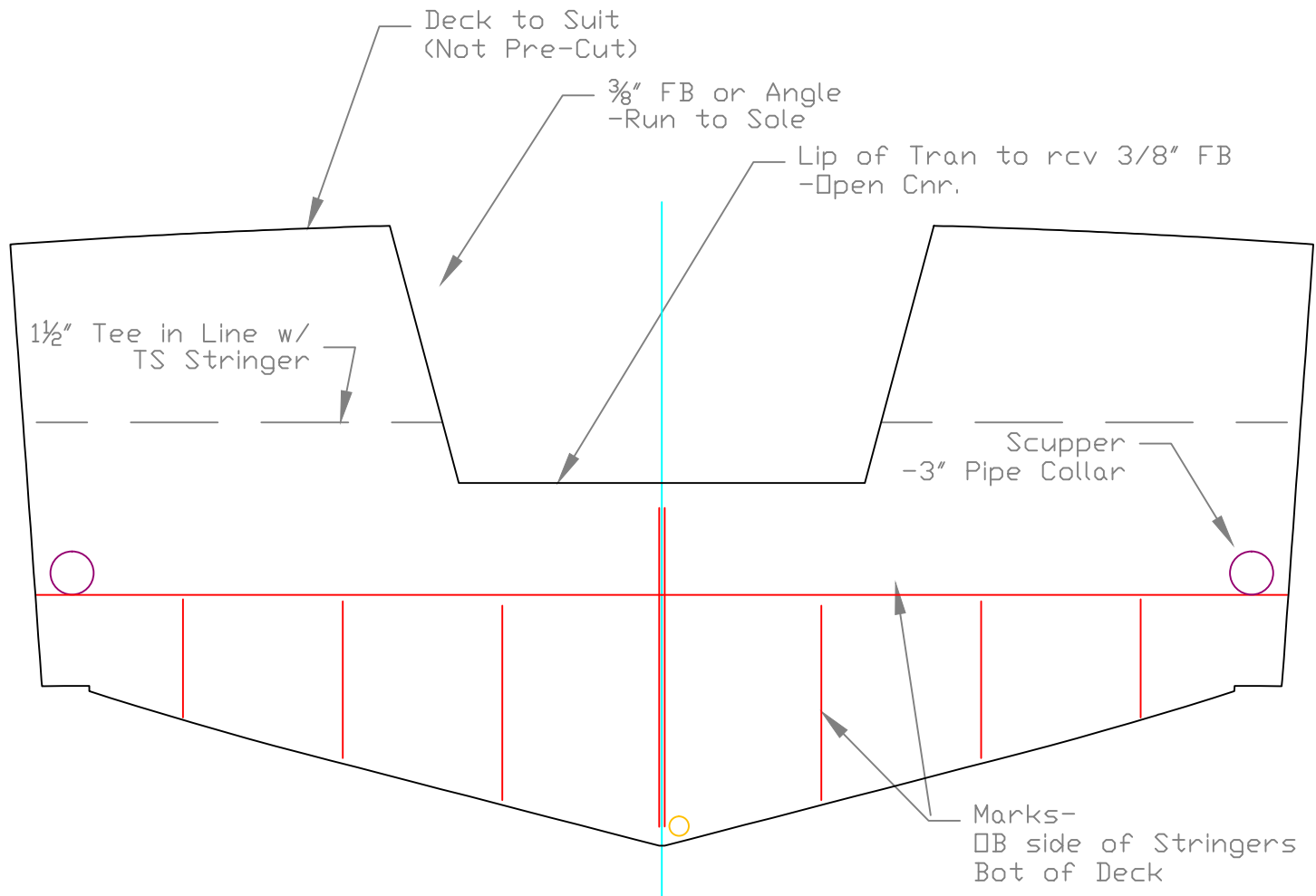


21' Skiff- CHESTER MARINE		
Keel Layout		
SCALE 1/2" = 1'	DES/DWN WAL/ARK	DATE 12/7/06
Response Marine, Inc. Newburyport, MA www.responsemarine.com		SHEET DWG NO. 276-2-01

REV.	DESCRIPTION



21' Skiff- CHESTER MARINE		
Hull Stringers		
SCALE 1/2" = 1'	DES/DWN WAL/ARK	DATE 12/7/06
REV.		DESCRIPTION
Response Marine, Inc. Newburyport, MA www.responsemarine.com		SHEET DWG NO. 276-2-02

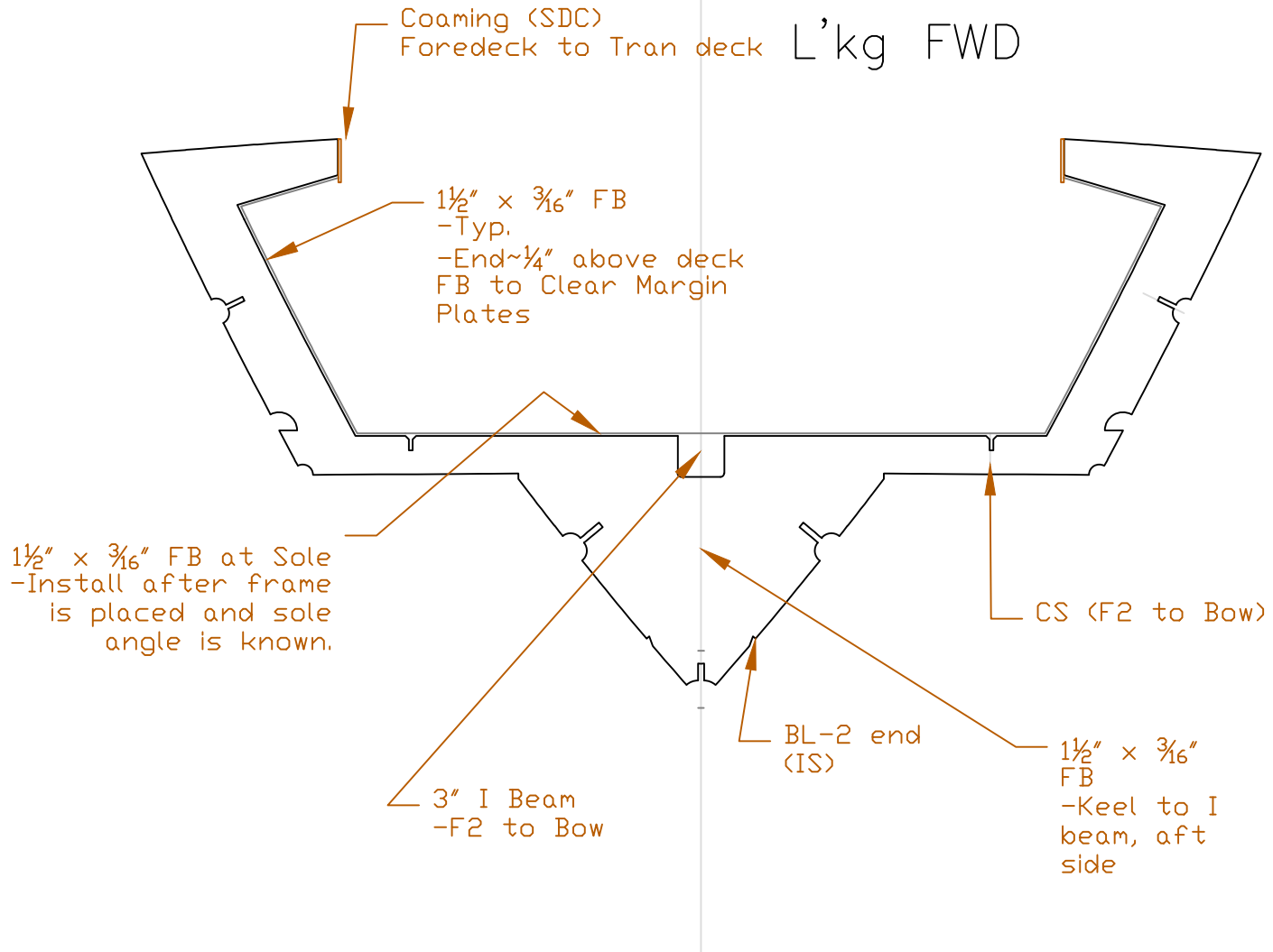


21' Skiff- CHESTER MARINE		
TRANSOM		
SCALE 1" = 1'	DES/DWN WAL/ARK	DATE 4/6/07
Response Marine, Inc. Newburyport, MA www.responsemarine.com		SHEET DWG NO. 275-2-05 R1

REV.	DESCRIPTION
R1, 4/9/07	Widened Engine Cutout

F1

L'kg FWD

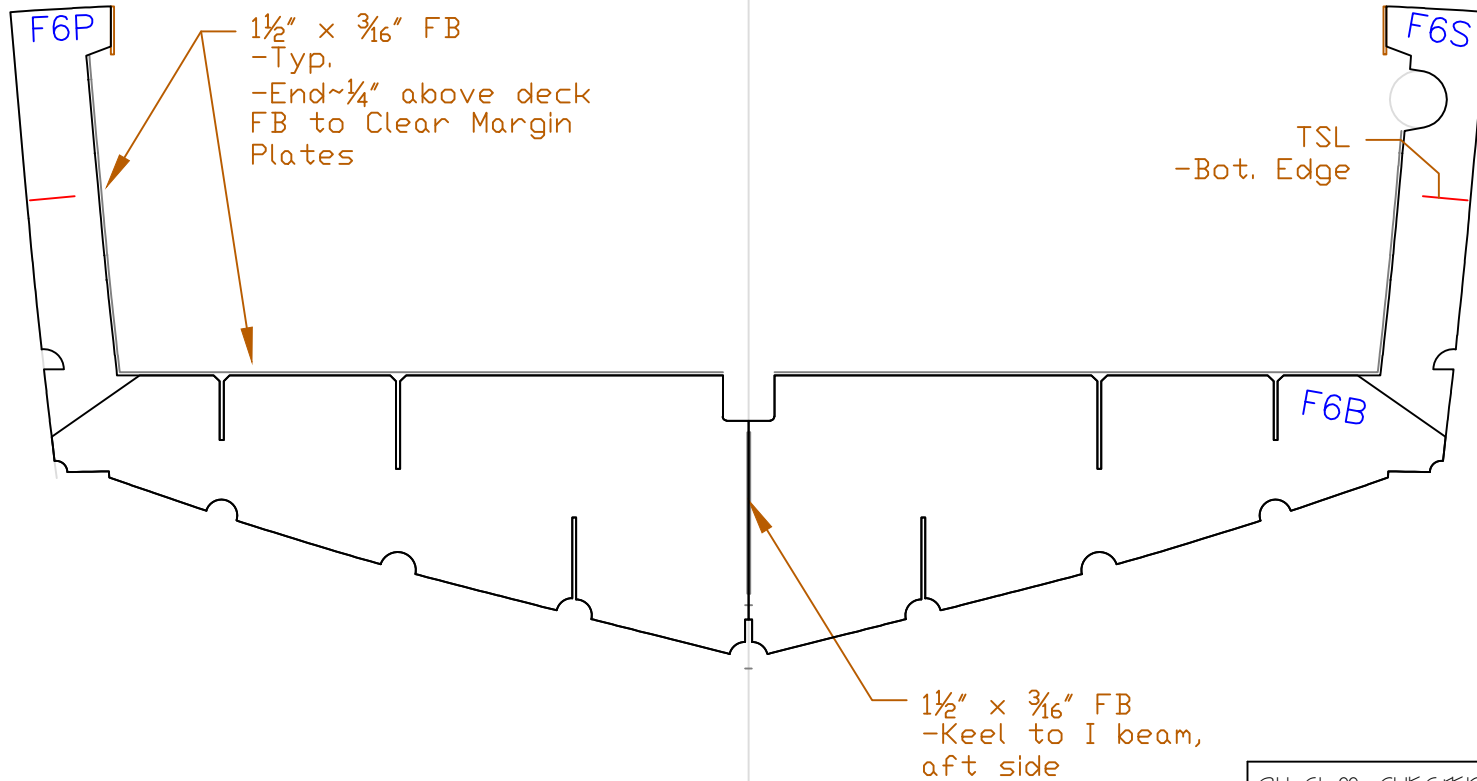


21' Skiff- CHESTER MARINE		
Frame 1		
SCALE 1" = 1'	DES/DWN WAL/ ARK	DATE 12/7/06
Response Marine, Inc. Newburyport, MA www.responsemarine.com		SHEET DWG NO. 276-F-1

REV.	DESCRIPTION

F6

L'kg FWD



21' Skiff- CHESTER MARINE		
Frame 6		
SCALE 1" = 1'	DES/DWN WAL/ARK	DATE 12/7/06
Response Marine, Inc. Newburyport, MA www.responsemarine.com		SHEET DWG NO. 276-F-6

REV.	DESCRIPTION