

DRAWING LIST

Delivered	Design	Dwg	Description	Customer	Date
White Metal Welding- 24' Flush Deck V Oyster Barge					
	538	-1	Outboard Profile		10/17/16
		-2	Outboard Plan & Body Plan		10/17/16
		-2-1	Keel Layout		10/17/16
		-2-2	Hull Skins		10/17/16
		-2-3	Hull Joint Details		10/17/16
		-2-4	Bow		10/17/16
		-2-5	Transom		10/17/16
		-2-6	Main Deck		10/17/16
		-2-7	Bow Knuckle		10/17/16
		-2-8	Engine Bracket & Deck		10/17/16
		-4-1	Console		10/17/16
		-4-2	Work Table		10/17/16
		-4-3	Roof		10/17/16
		-F1	Frame 1		10/13/16
		-F2	Frame 2		10/13/16
		-F3	Frame 3, WTBHD		10/13/16
		-F4	Frame 4		10/13/16
		-F5	Frame 5		10/13/16
		-F6	Frame 6, WTBHD		10/13/16
		-F7	Frame 7		10/13/16

\*\*\*\*\* NC Cut Parts \*\*\*\*\*

Response Marine, Inc.

Boat: WMW 24, Flush Deck, V, # 538

File: \Des\WhiteMetalWelding\24FDV

Rev. Date: 10/13/16

Print Date: 10/13/16

Cut Files are:

# 502A, 125 5052 parts

# 502A, 190 5052 parts

# 502A, 190 5086 parts

# 502A, 250 5086 parts

# 502, 375 5086 parts (no change v prior)

CHECKED REV

**1/8" Parts- 5052 Stock**

	<u>Part #</u>	<u>Pieces</u>	<u>Description</u>	<u>Bend</u>
10/4/16	C-2	1	Console Top/Front Face	Y- on marks tight radius
10/4/16	C-3	1	Console Back	Y- on marks tight radius
10/4/16	C-4	1	Console Seat	Y- on marks tight radius
10/4/16	C-5	1	Console Seat Lid	Y- on marks tight radius
10/4/16	C-6	1	Console Shelf	
	10/13/16 J-R	3	Roof Jigs	
	10/12/16 WT-4	1	Work Table, Cabinet Fwd/IB Face	Y Bump as Marked
	10/12/16 WT-7	1	Work Table, Cabinet, Corner Filler	
		10	Sub Total 1/8" 5052 parts	

**1/8" Parts- 5086 Stock**

	<u>Part #</u>	<u>Pieces</u>	<u>Description</u>	<u>Bend</u>
	10/12/16 R	1	Roof	
	10/12/16 WT-5	1	Work Table, Cabinet, Outboard Face	
	10/12/16 WT-6	1	Work Table, Cabinet, Aft Face	
10/4/16	C-1P	1	Console Sides	
10/4/16	C-1S	1	Console Sides	
		5	Sub Total 1/8" 5086 parts	

CHECKED

**3/16" Parts- 5052**

	<u>Part #</u>	<u>Pieces</u>	<u>Description</u>	<u>Bend</u>
		0	Sub Total 3/16" 5086 parts	

CHECKED

**3/16" Parts- 5086 Marine**

	<u>Part #</u>	<u>Pieces</u>	<u>Description</u>	<u>Bend</u>
	10/12/16 BK-AP	1	Bow Knuckle, Bottom, Port Side	
	10/12/16 BK-AS	1	Bow Knuckle, Bottom, Stbd Side	
	10/12/16 BK-B	1	Bow Knuckle, Bottom, FWD	

10/12/16 BK-CP	1	Bow Knuckle, Face, Port	Y	2" R Btwn Marks
10/12/16 BK-CS	1	Bow Knuckle, Face, Stbd	Y	2" R Btwn Marks
10/12/16 DB-A	1	Deck Body, Bow to F3		
10/12/16 DB-B	1	Deck Body, F3-F6		
10/12/16 DB-C	1	Deck Body, F6-Tran		
10/12/16 DM-AP	1	Sole Margin, Bow to F3, Port		
10/12/16 DM-AS	1	Sole Margin, Bow to F3, Stbd		
10/12/16 DM-BP	1	Sole Margin, F3 to Transom, Port		
10/12/16 DM-BS	1	Sole Margin, F3 to Transom, Stbd		
10/12/16 EB-P	1	Engine Bracket side, Port		
10/12/16 EB-S	1	Engine Bracket side, Stbd		
10/12/16 EB-LE	2	Engine Bracket, Lip Ends		
10/12/16 EB-D	1	Engine Bracket Deck		
10/12/16 F1	1	Frame 1		
10/12/16 F1U	1	Frame 1, Upper		
10/12/16 F2	1	Frame 2		
10/12/16 F2U	1	Frame 2, Upper		
10/12/16 F3	1	Frame 3, WTBHD		
10/12/16 F4	1	Frame 4		
10/12/16 F4U	1	Frame 4, Upper		
10/12/16 F5	1	Frame 5		
10/12/16 F5U	1	Frame 5, Upper		
10/12/16 F6	1	Frame 6, WTBHD		
10/12/16 F7	1	Frame 7		
10/12/16 F7U	1	Frame 7, Upper		
10/12/16 WT-1	1	Work Table, Counter Top		
10/12/16 WT-2P	1	Work Table, Counter Lip, Port/Fwd	Y	Bump as Marked
10/12/16 WT-2S	1	Work Table, Counter Lip, Stbd/Aft	Y	Bump as Marked
10/12/16 WT-8	1	Work Table, Cabinet, Door		

33 Sub Total 3/16" 5086 parts

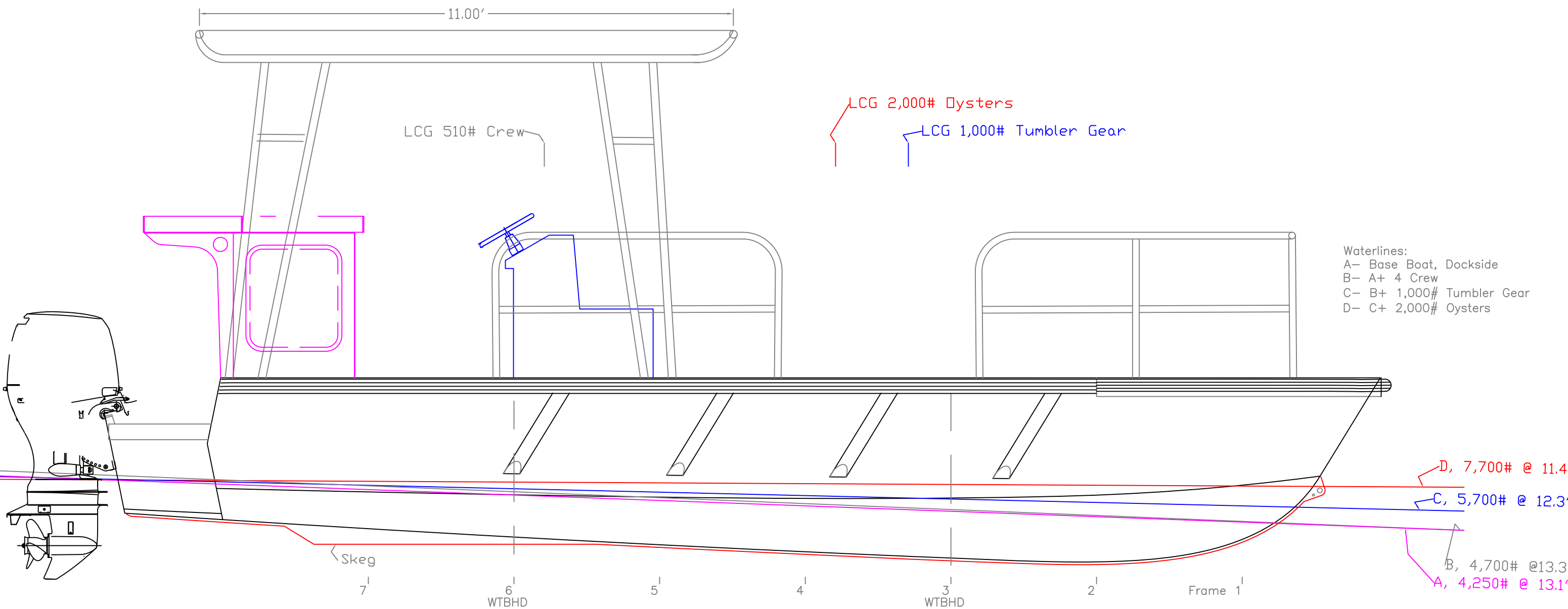
### 1/4" Parts- 5086 H116 Marine

10/11/16 B-AP	1	Bottom, Main, Port		
10/11/16 B-AS	1	Bottom, Main, Stbd		
10/11/16 B-BP	1	Bottom, Aft portion of Bracket, Port		
10/11/16 B-BS	1	Bottom, Aft portion of Bracket, Stbd		
10/12/16 BOW	1	Bow		
10/12/16 BOW-S1	2	Bow Stiffener, Vertical 12" off CL		
10/12/16 BOW-S2	2	Bow Stiffener, Vertical 24" off CL		
10/11/16 BS-1AP	1	Bottom Stringer 1, F1-F7, Port		
10/11/16 BS-1AS	1	Bottom Stringer 1, F1-F7, Stbd		
10/11/16 BS-1BP	1	Bottom Stringer 1, F7-Tran, Port		
10/11/16 BS-1BS	1	Bottom Stringer 1, F7-Tran, Stbd		
10/11/16 BS2-AP	1	Bottom Stringer 2, Stem-F3, Port		
10/11/16 BS2-AS	1	Bottom Stringer 2, Stem-F3, Stbd		
10/11/16 BS2-AP	1	Bottom Stringer 2, F3-Tran, Port		
10/11/16 BS2-AS	1	Bottom Stringer 2, F3-Tran, Stbd		
10/11/16 BS-3AP	1	Bottom Stringer 3, F1-F6, Port		
10/11/16 BS-3AS	1	Bottom Stringer 3, F1-F6, Stbd		
10/11/16 BS-3BP	1	Bottom Stringer 3, F6-Tran, Port		
10/11/16 BS-3BS	1	Bottom Stringer 3, F6-Tran, Stbd		
10/11/16 CS-P	1	Chine Stiffener, Bow to F2, Port		
10/11/16 CS-S	1	Chine Stiffener, Bow to F2, Stbd		
10/12/16 EB-T	1	Engine Bracket Transom		
10/12/16 EB-EFP	1	Engine Bracket Deck Edge Flange, Port	Y	Bump as Marked
10/12/16 EB-EFS	1	Engine Bracket Deck Edge Flange, Stbd	Y	Bump as Marked
10/12/16 TR	1	Transom, Lower		
10/12/16 TR-U	1	Transom, Upper		
10/12/16 TRS-C	1	Transom Stiffener, CL above Keel		
10/12/16 TRS-P	1	Transom Stiffener, Vertical at BS2, Port		

10/12/16 TRS-S	1	Transom Stiffener, Vertical at BS2, Stbd
10/12/16 TS-AP	1	Topsides, Fwd, Port
10/12/16 TS-AS	1	Topsides, Fwd, Stbd
10/12/16 TS-BP	1	Topsides, Aft, Port
10/12/16 TS-BS	1	Topsides, Aft, Stbd
10/12/16 TSS-P	1	Topsides Stringer, Port
10/12/16 TSS-S	1	Topsides Stringer, Stbd
10/12/16 WT-3	3	Work Table, Aft Gussets
	40	Sub Total 1/4" Parts

**3/8" Parts 5086 H116 Marine**

<u>Part #</u>	<u>Pieces</u>	<u>Description</u>
10/12/16 C-AP	1	Chine Port, Fwd
10/12/16 C-AS	1	Chine Starboard, Fwd
10/12/16 C-BP	1	Chine Port, Aft
10/12/16 C-BS	1	Chine Starboard, Aft
10/12/16 EB-L	1	Engine Bracket Lip
10/12/16 EB-LF	1	Engine Bracket Lip Face
10/12/16 KA	1	Keel, Fwd
10/12/16 KB	1	Keel, Mid
10/12/16 KC	1	Keel, Aft
	9	Total 3/8" parts
	97	Total Parts



Waterlines:  
 A- Base Boat, Dockside  
 B- A+ 4 Crew  
 C- B+ 1,000# Tumbler Gear  
 D- C+ 2,000# Oysters

D, 7,700# @ 11.4'  
 C, 5,700# @ 12.3'  
 B, 4,700# @ 13.3'  
 A, 4,250# @ 13.1'

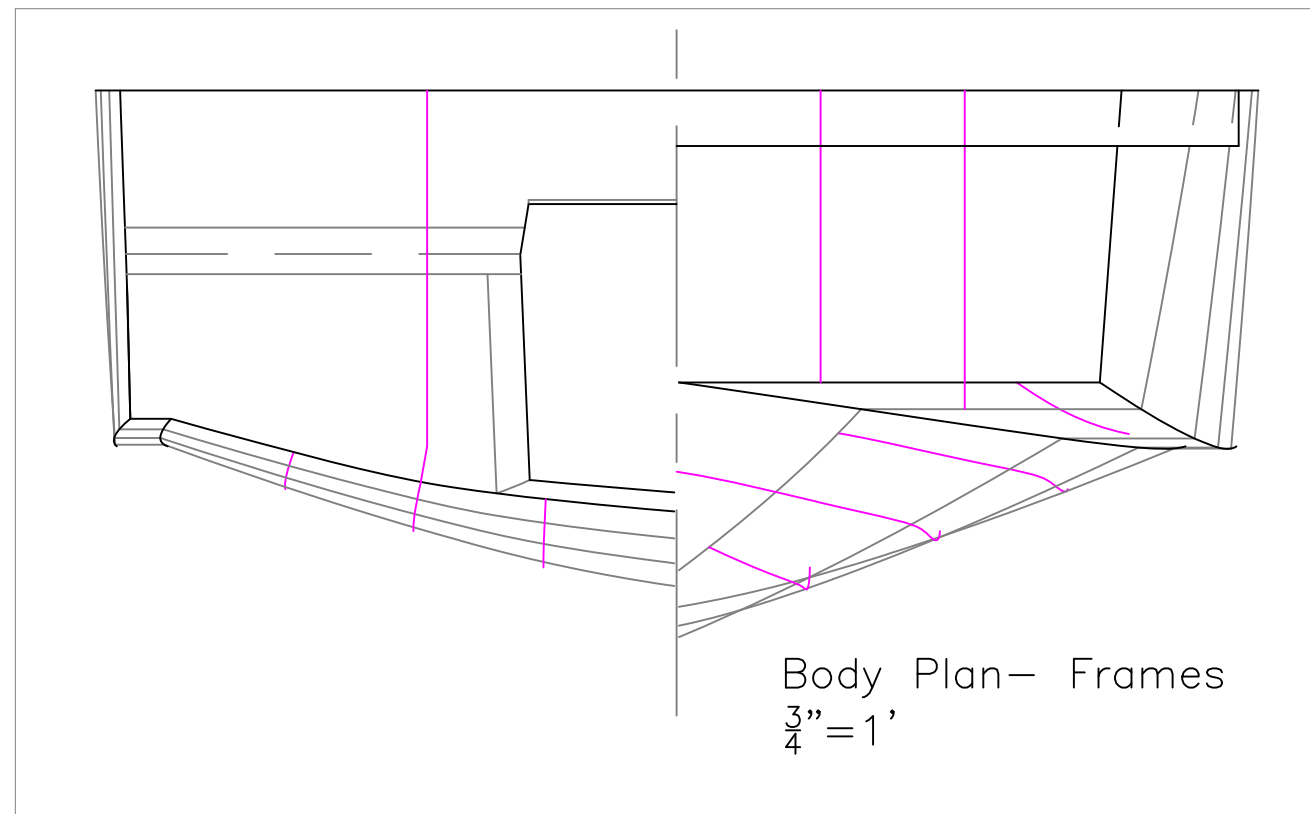
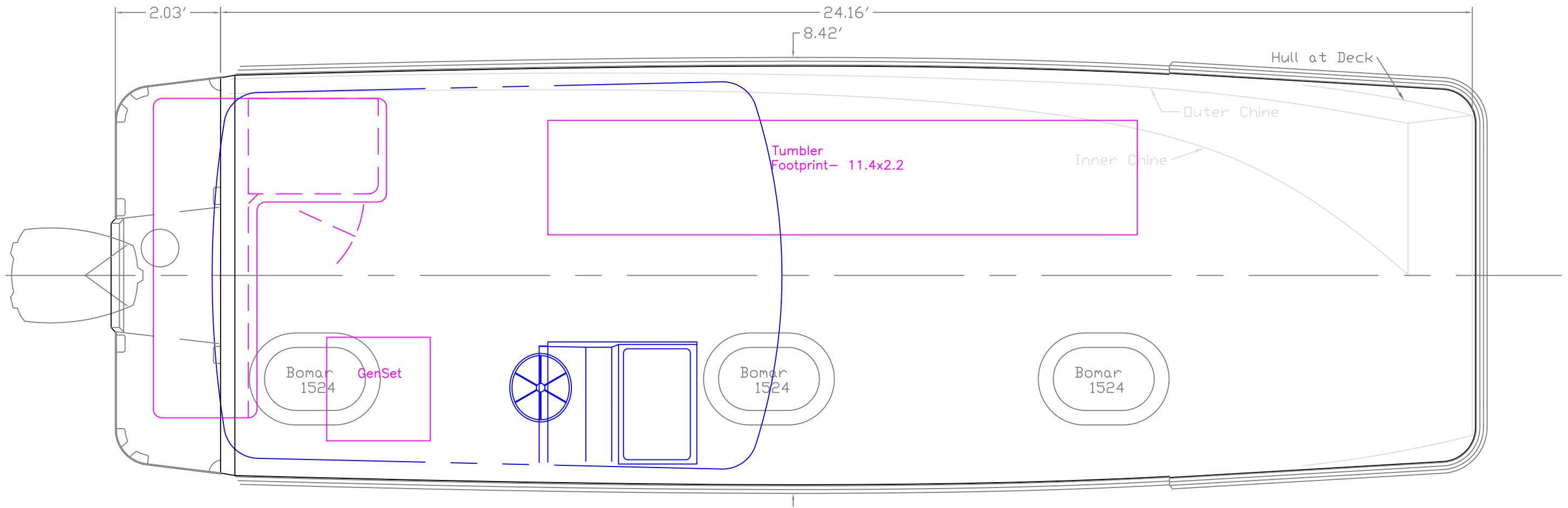
OUTBOARD PROFILE

24' Flush Deck V  
 For: White Metal Welding

SCALE 1/2" = 1'	DES/DWN WAL	DATE 10/17/16
--------------------	----------------	------------------

<b>Response Marine, Inc.</b>	SHEET
Newburyport, MA, www.responsemarine.com	DWG NO. 538-1

REV.	DESCRIPTION



OUTBOARD PLAN & BODY PLAN

24' Flush Deck V

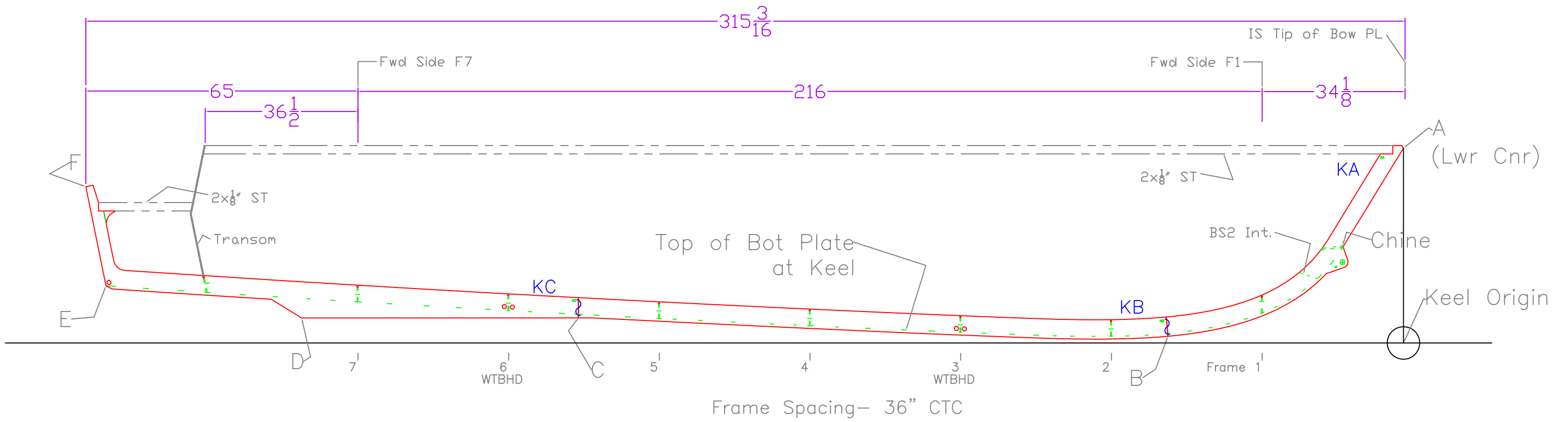
For: White Metal Welding

SCALE 1/2" = 1'	DES/DWN WAL	DATE 10/17/16
--------------------	----------------	------------------

<b>Response Marine, Inc.</b>		SHEET
------------------------------	--	-------

Newburyport, MA, <a href="http://www.responsemarine.com">www.responsemarine.com</a>	DWG NO. 538-2
-------------------------------------------------------------------------------------	---------------

REV.	DESCRIPTION



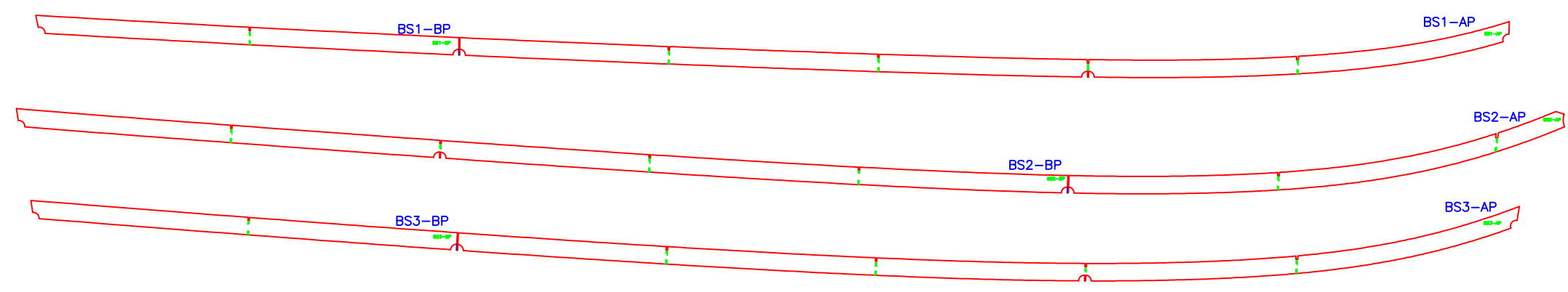
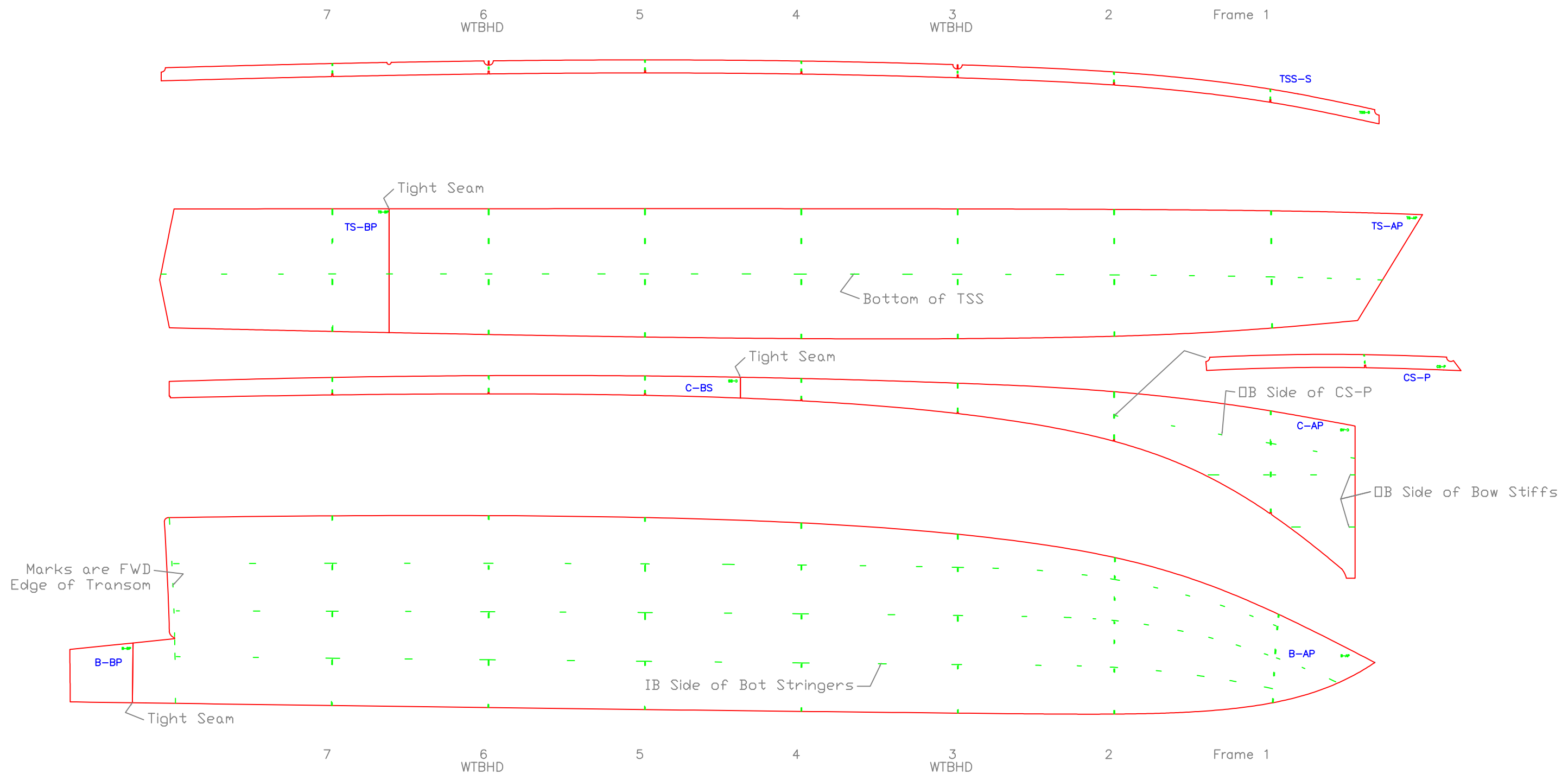
Response Marine, Inc.					
#538 WMW 24' FDV	10/14/16				
Keel Points					
	Inches- sixteenths			Feet	
	Horizontal	Vertical		Horizontal	Vertical
A to Origin					
B to Origin					
C to Origin					
D to Origin					
E to Origin					
F to Origin					
A					
A to					
B to					
C to					
D to					
E to					
F to	0				

REV.	DESCRIPTION
------	-------------

**KEEL LAYOUT**

24' Flush Deck V  
For: White Metal Welding

SCALE 1/2" = 1'	DES/DWN WAL	DATE 10/17/16
<b>Response Marine, Inc.</b>		SHEET
Newburyport, MA, www.responsemarine.com		DWG NO. 538-2-1



HULL SKINS

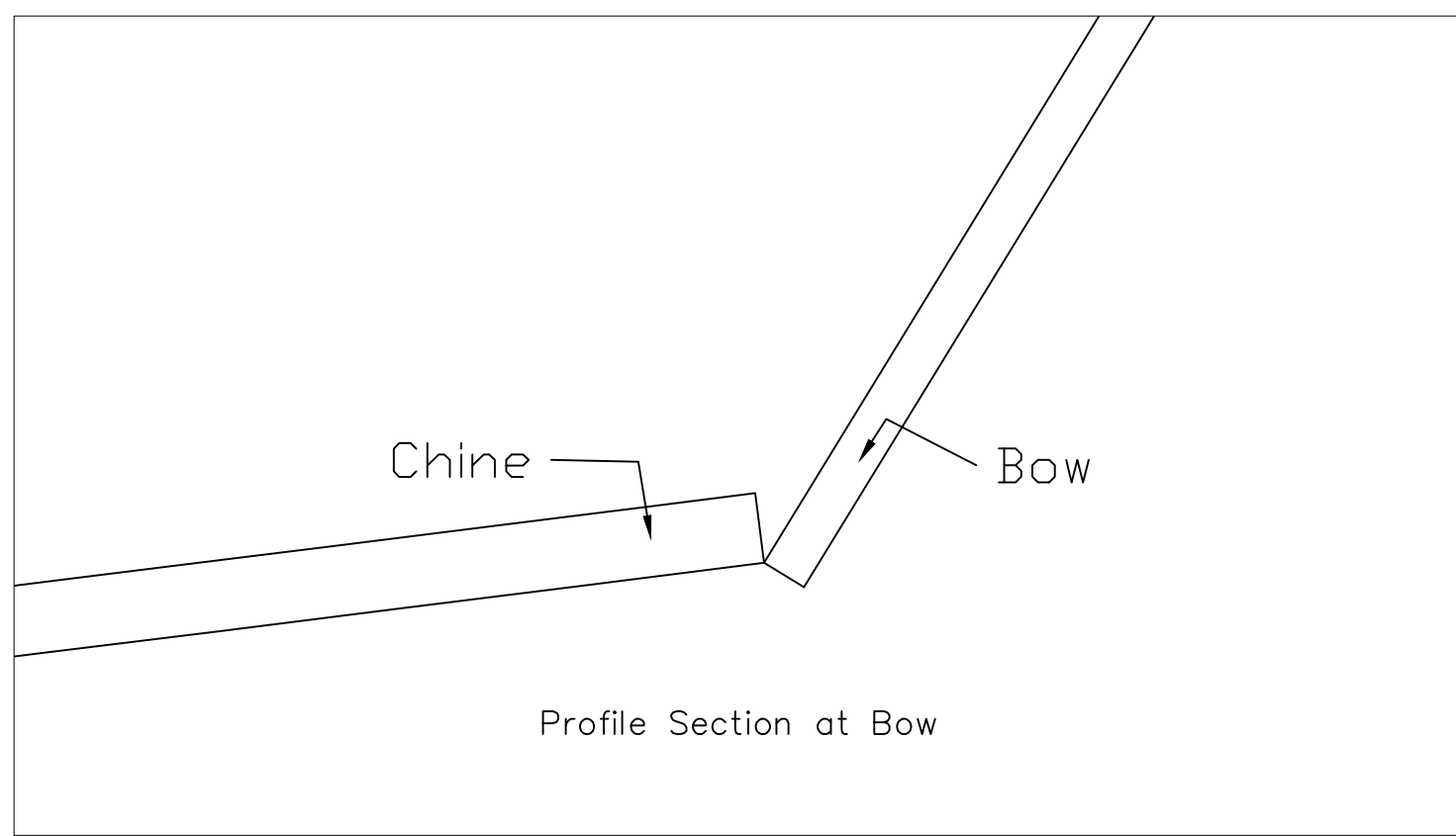
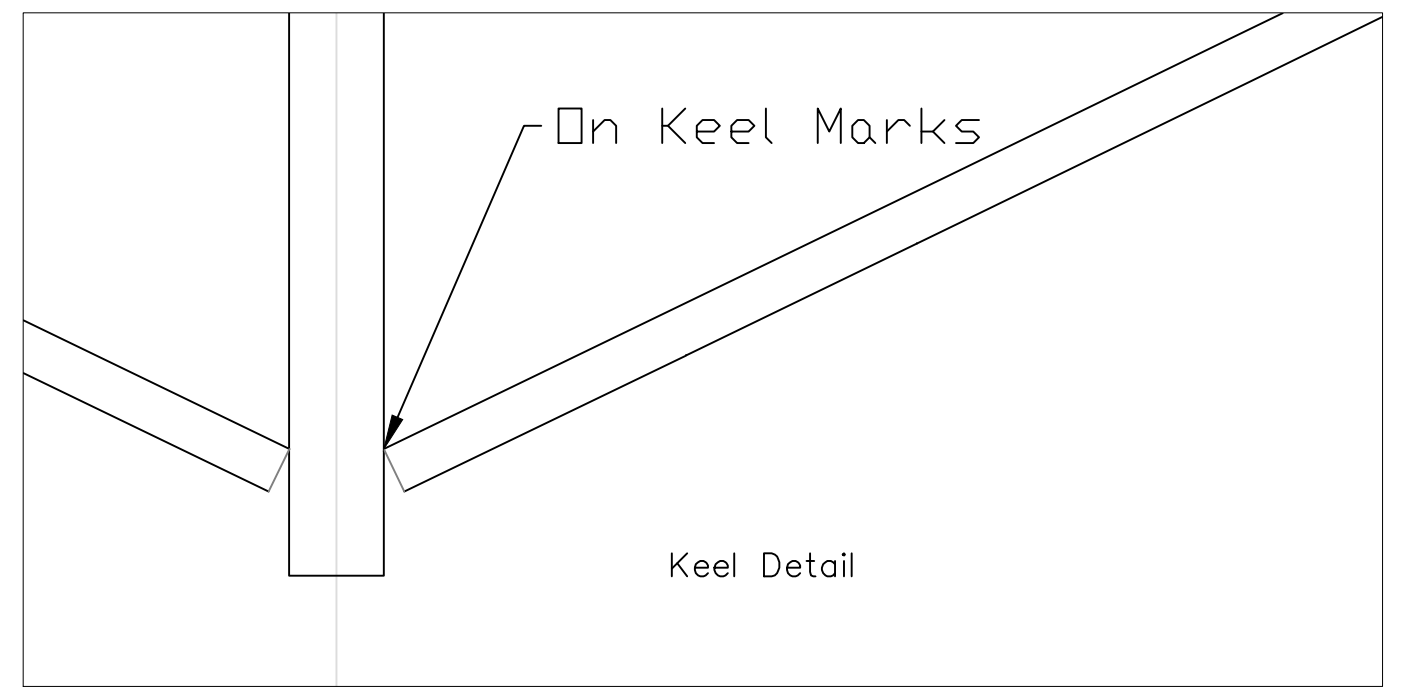
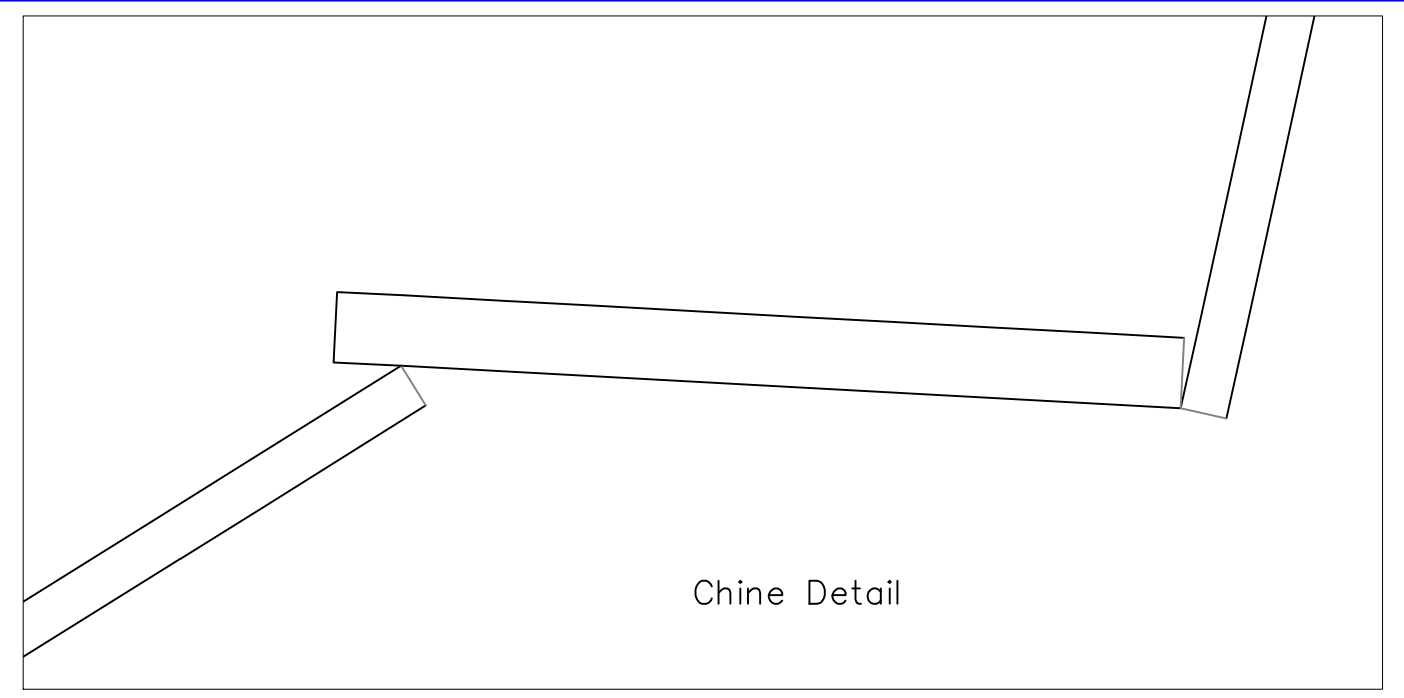
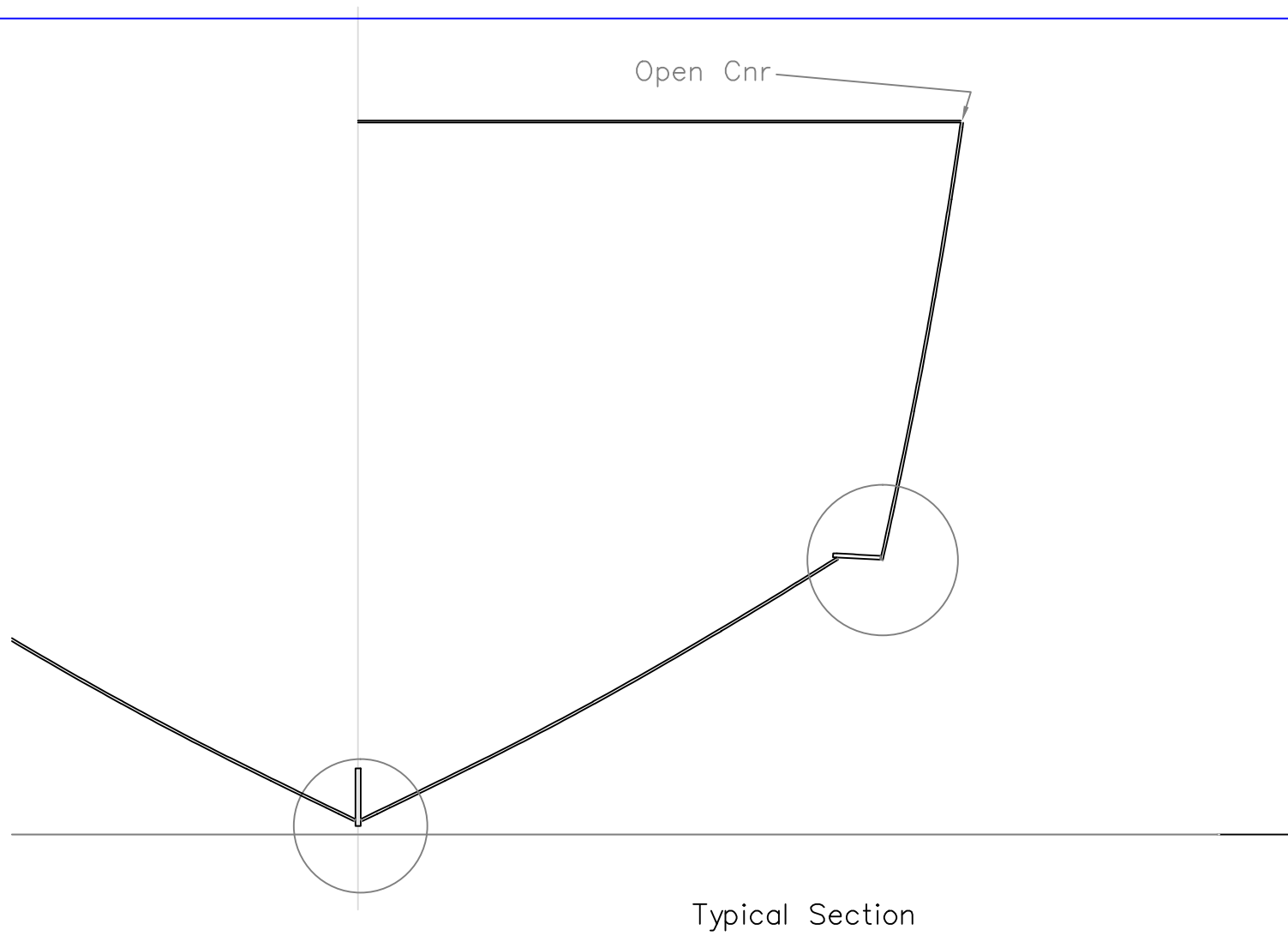
24' Flush Deck V

For: White Metal Welding

SCALE 1/2" = 1'	DES/DWN WAL	DATE 10/17/16
<b>Response Marine, Inc.</b> Newburyport, MA, www.responsemarine.com		SHEET DWG NO. 538-2-2

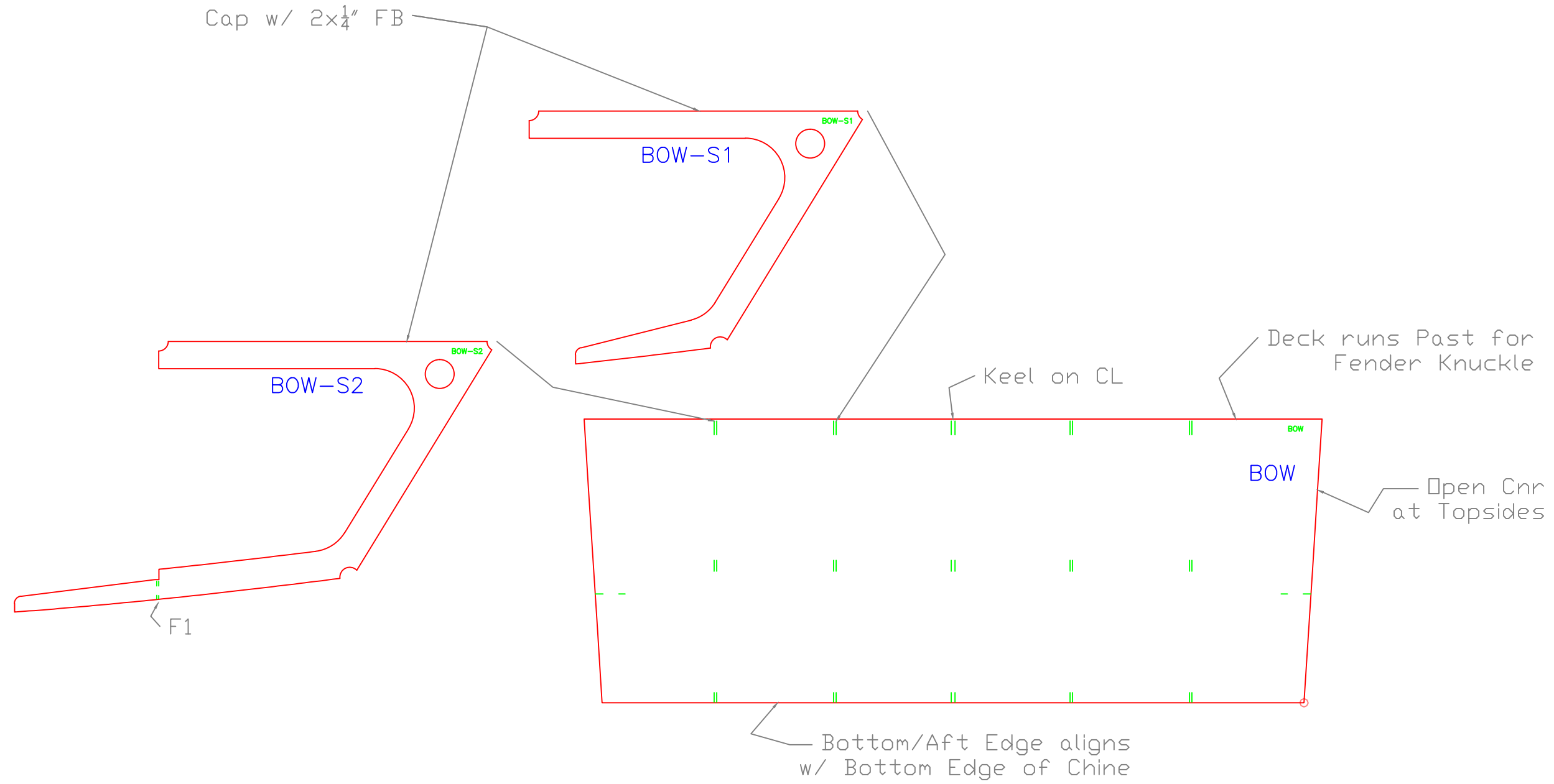
REV.	DESCRIPTION





REV.	DESCRIPTION

Hull Joint Details		
24' Flush Deck V		
For: White Metal Welding		
SCALE NONE	DES/DWN WAL	DATE 10/17/16
<b>Response Marine, Inc.</b> Newburyport, MA, www.responsemarine.com		SHEET DWG NO. 538-2-3

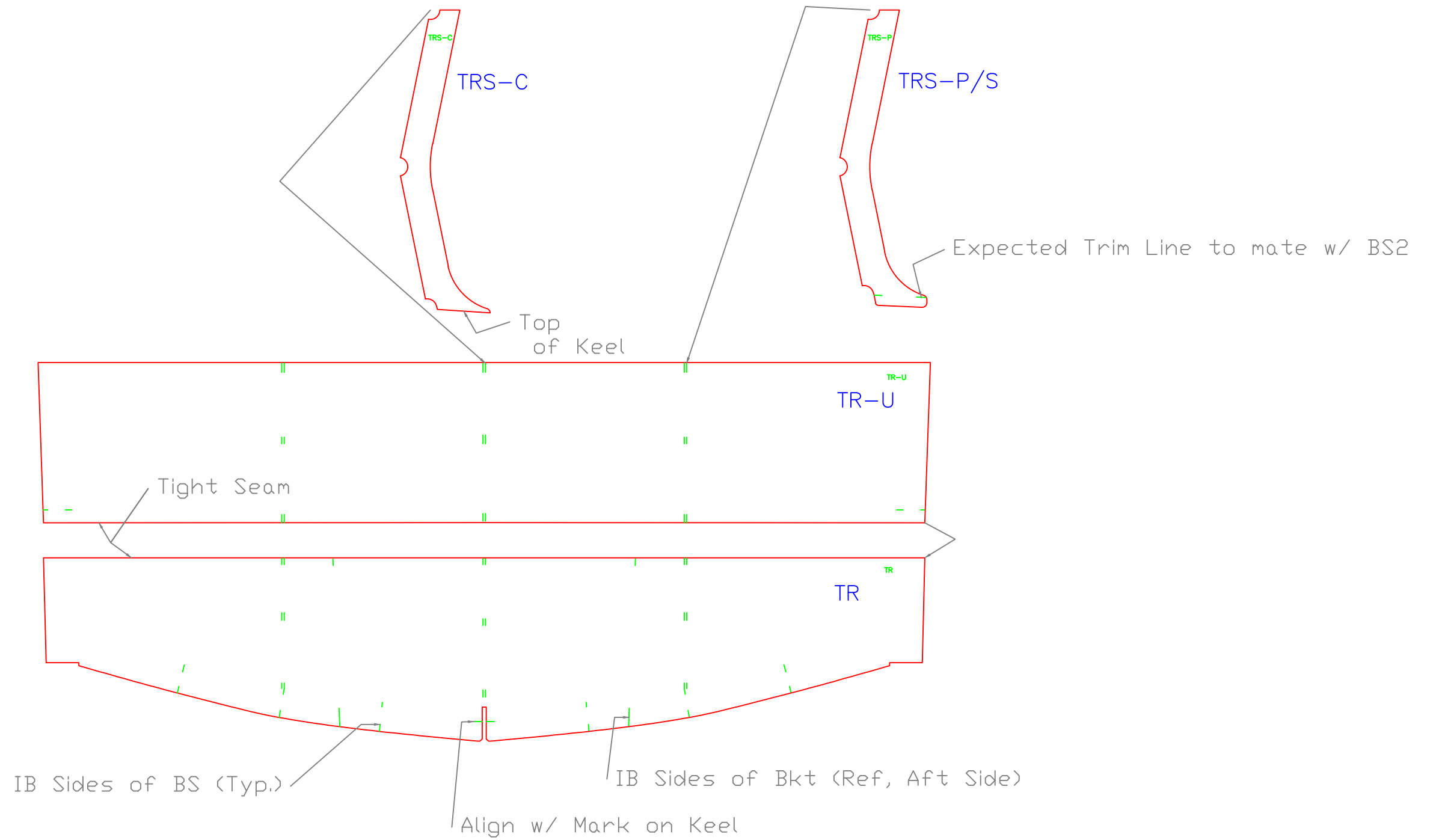


BOW  
 24' Flush Deck V  
 For: White Metal Welding

SCALE 1" = 1'	DES/DWN WAL	DATE 10/17/16
------------------	----------------	------------------

REV.	DESCRIPTION

**Response Marine, Inc.**  
 Newburyport, MA, www.responsemarine.com  
 SHEET  
 DWG NO. 538-2-4

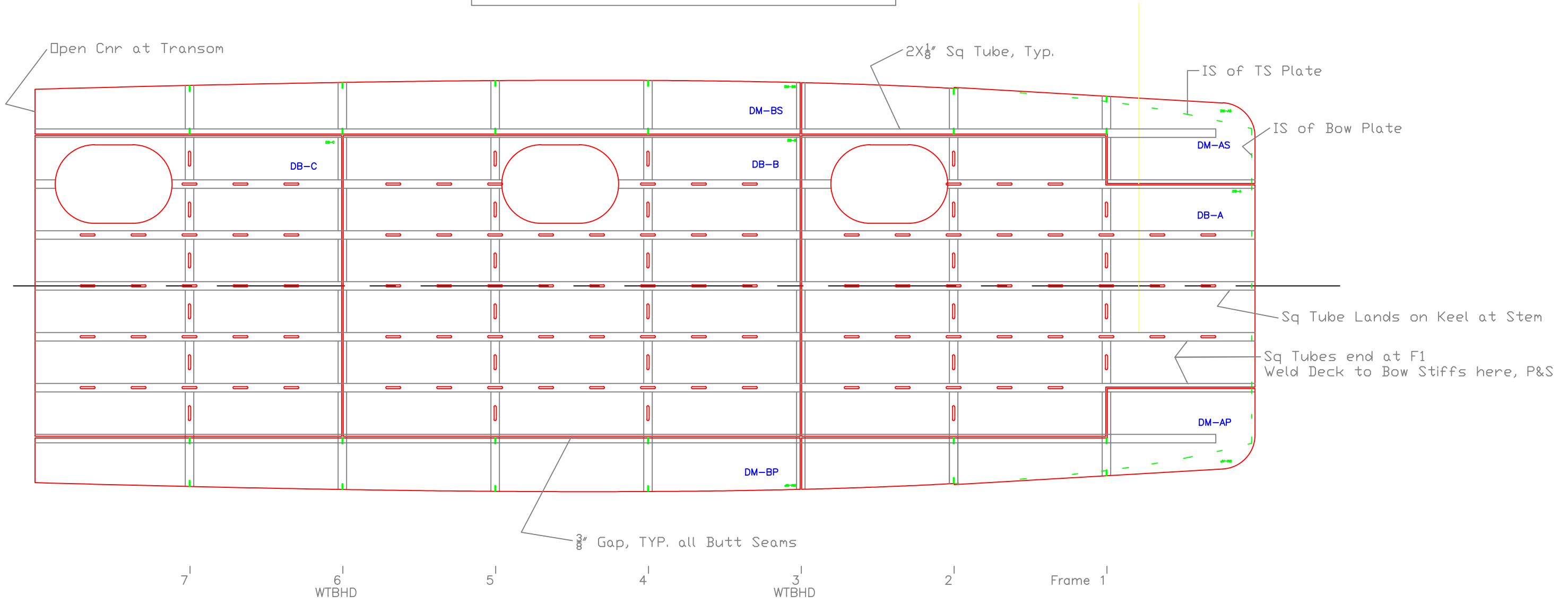


TRANSOM

24' Flush Deck V		
For: White Metal Welding		
SCALE 1" = 1'	DES/DWN WAL	DATE 10/17/16
<b>Response Marine, Inc.</b> Newburyport, MA, www.responsemarine.com		SHEET DWG NO. 538-2-5

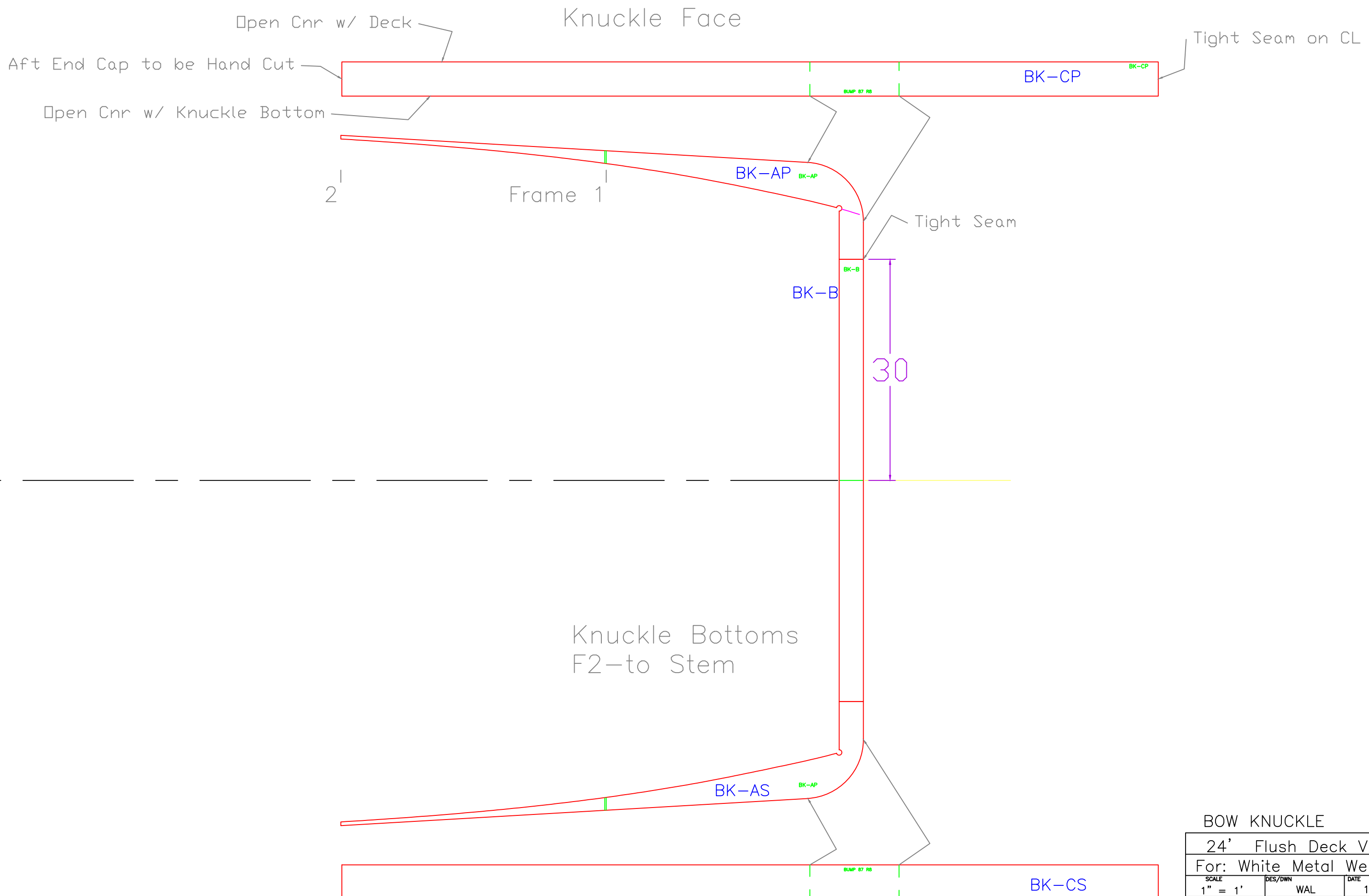
REV.	DESCRIPTION

MAIN DECK— Viewed from BELOW.



MAIN DECK		
24' Flush Deck V		
For: White Metal Welding		
SCALE 1/2" = 1'	DES/DWN WAL	DATE 10/17/16
<b>Response Marine, Inc.</b> Newburyport, MA, www.responsemarine.com		SHEET DWG NO. 538-2-6

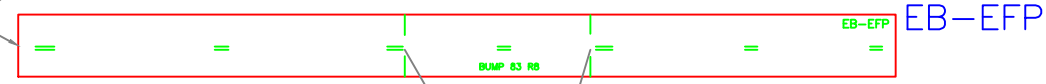
REV.	DESCRIPTION



BOW KNUCKLE		
24' Flush Deck V		
For: White Metal Welding		
SCALE 1" = 1'	DES/DWN WAL	DATE 10/17/16
<b>Response Marine, Inc.</b>		SHEET
Newburyport, MA, <a href="http://www.responsemarine.com">www.responsemarine.com</a>		DWG NO. 538-2-7

REV.	DESCRIPTION

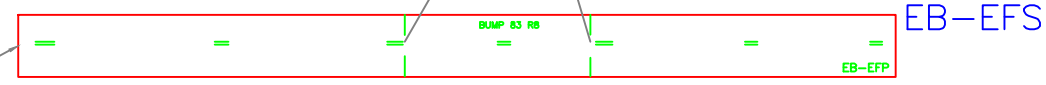
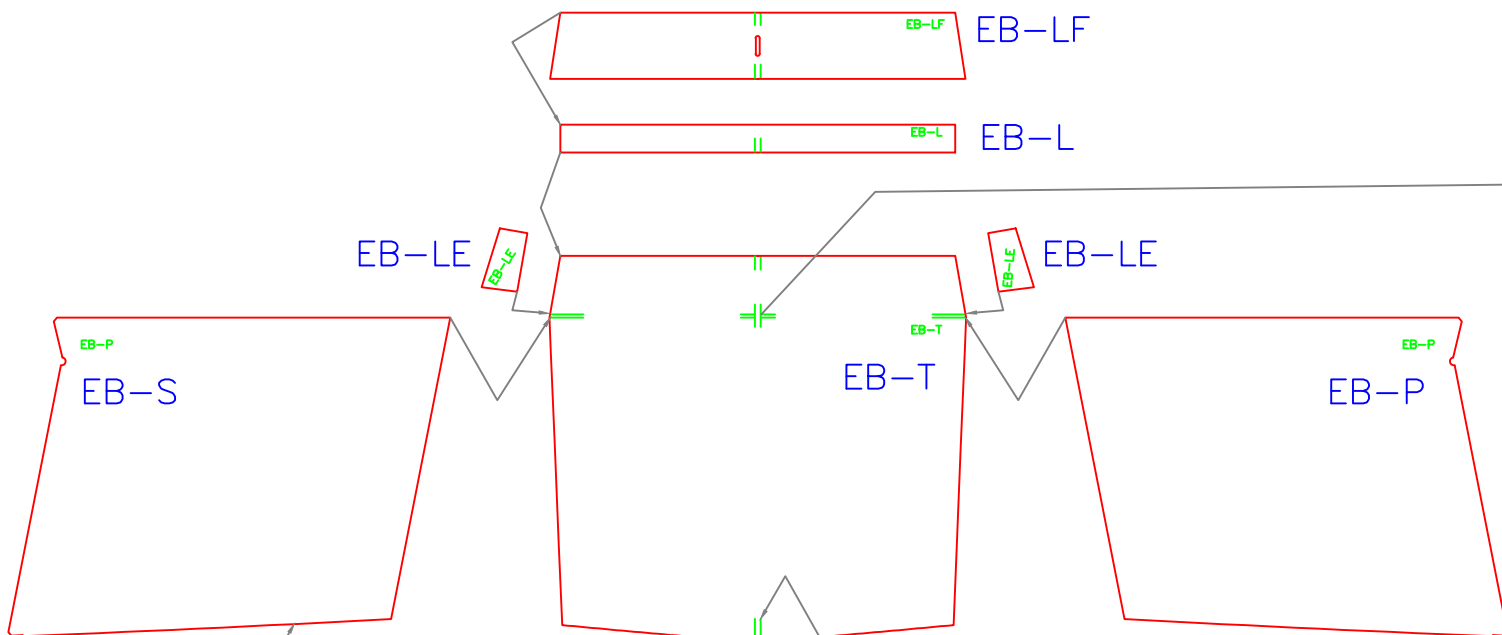
Each End is 1 1/2" Long for Trim



EB-D

Bracket sides

Armstrong DP-8  
(8.75 CD, 10" OD)



Each End is 1 1/2" Long for Trim

ENGINE BRACKET & DECK  
24' Flush Deck V

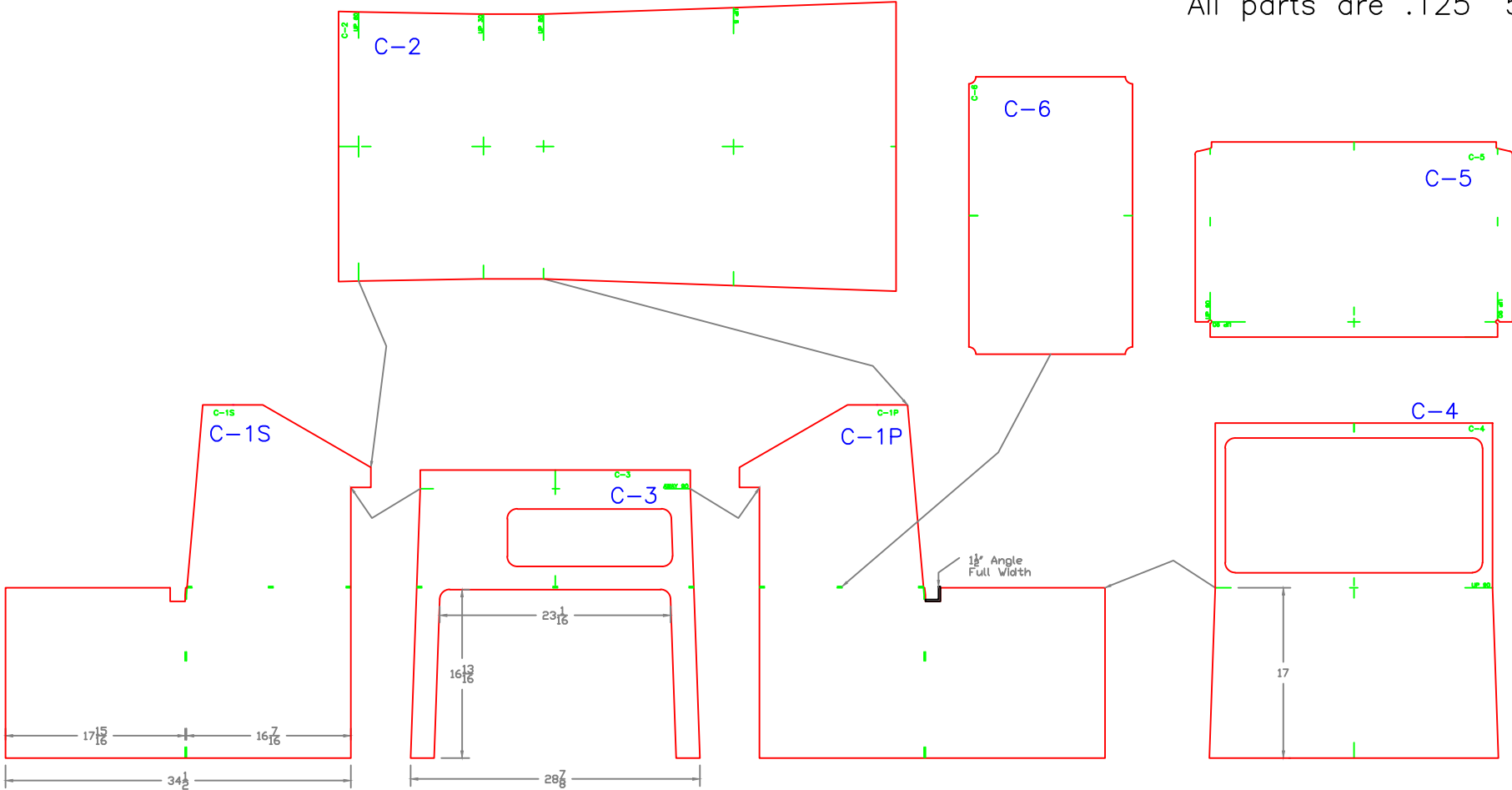
For: White Metal Welding

SCALE 1" = 1'	DES/DWN WAL	DATE 10/17/16
------------------	----------------	------------------

<b>Response Marine, Inc.</b> Newburyport, MA, www.responsemarine.com	SHEET DWG NO. 538-2-8
-------------------------------------------------------------------------	--------------------------

REV.	DESCRIPTION

All parts are .125" 5052



CONSOLE

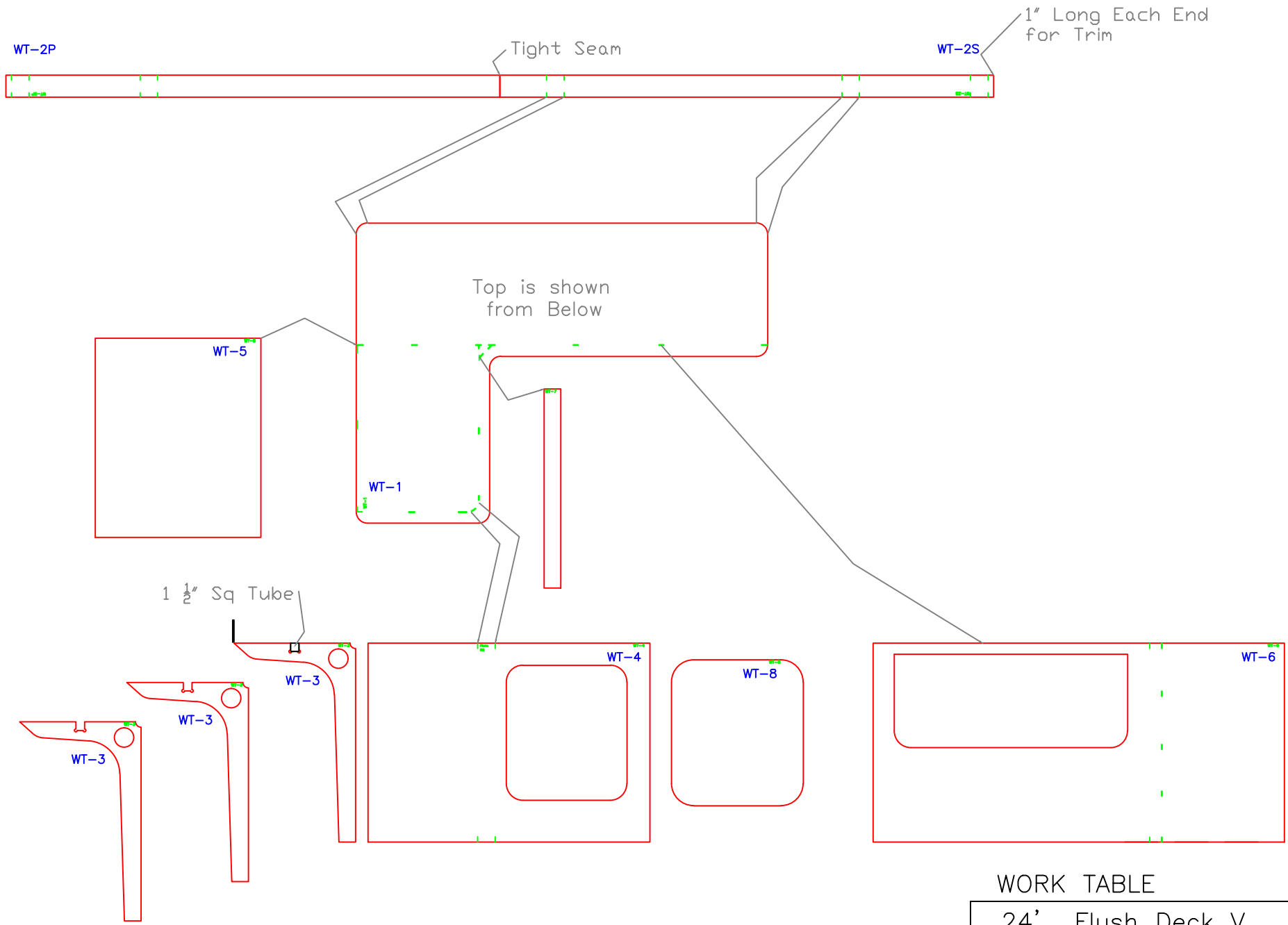
24' Flush Deck V  
 For: White Metal Welding

SCALE 3/4" = 1'	DES/DWN WAL	DATE 10/17/16
--------------------	----------------	------------------

SHEET	
DWG NO. 538-4-1	

REV.	DESCRIPTION

**Response Marine, Inc.**  
 Newburyport, MA, www.responsemarine.com

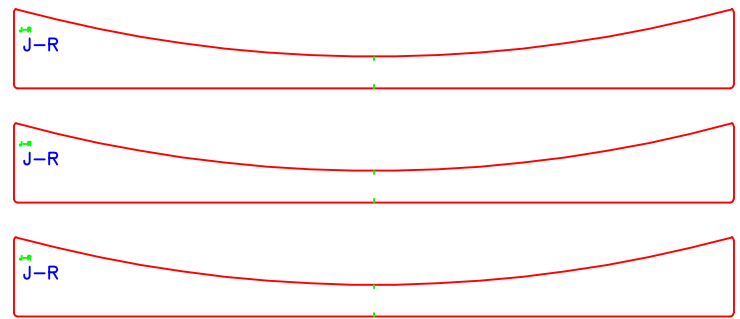
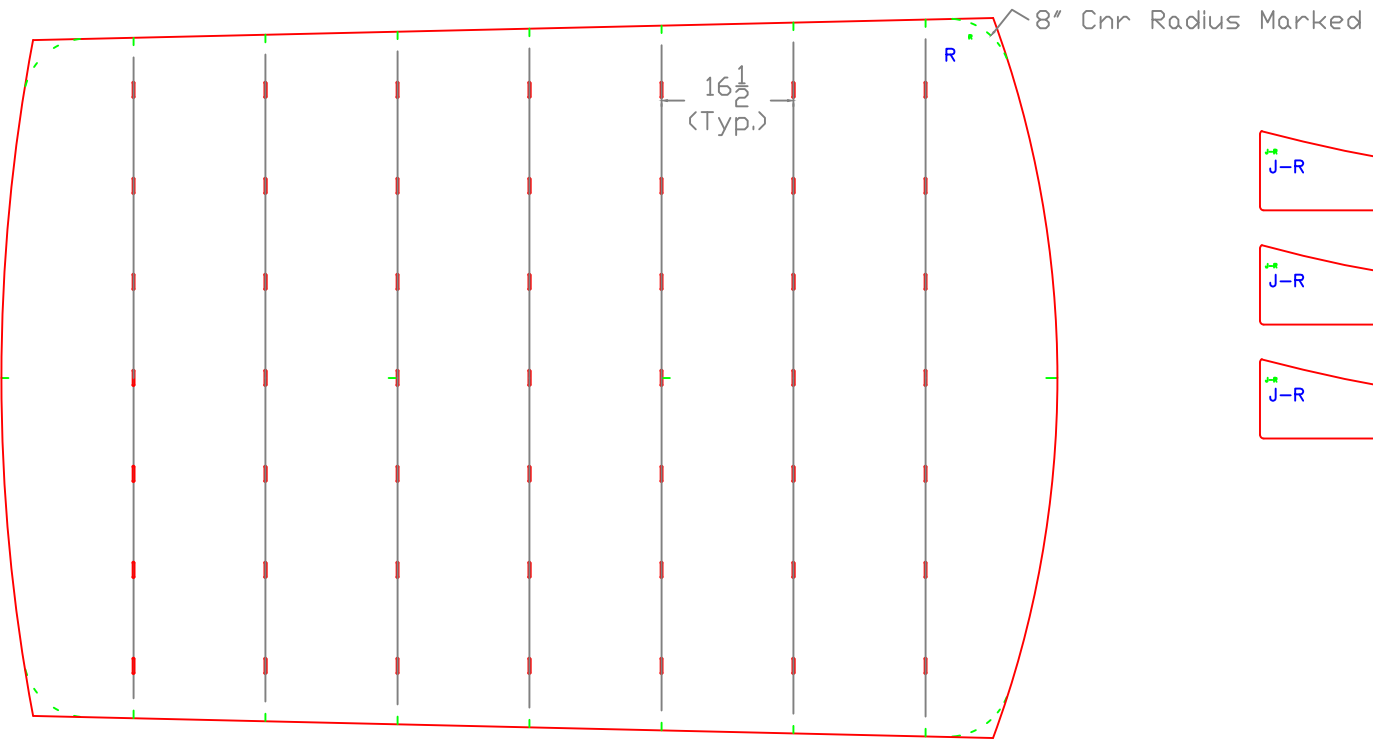


WORK TABLE

24' Flush Deck V		
For: White Metal Welding		
SCALE 1/2" = 1'	DES/DWN WAL	DATE 10/17/16
<b>Response Marine, Inc.</b> Newburyport, MA, <a href="http://www.responsemarine.com">www.responsemarine.com</a>		SHEET DWG. NO. 538-4-2

REV.	DESCRIPTION



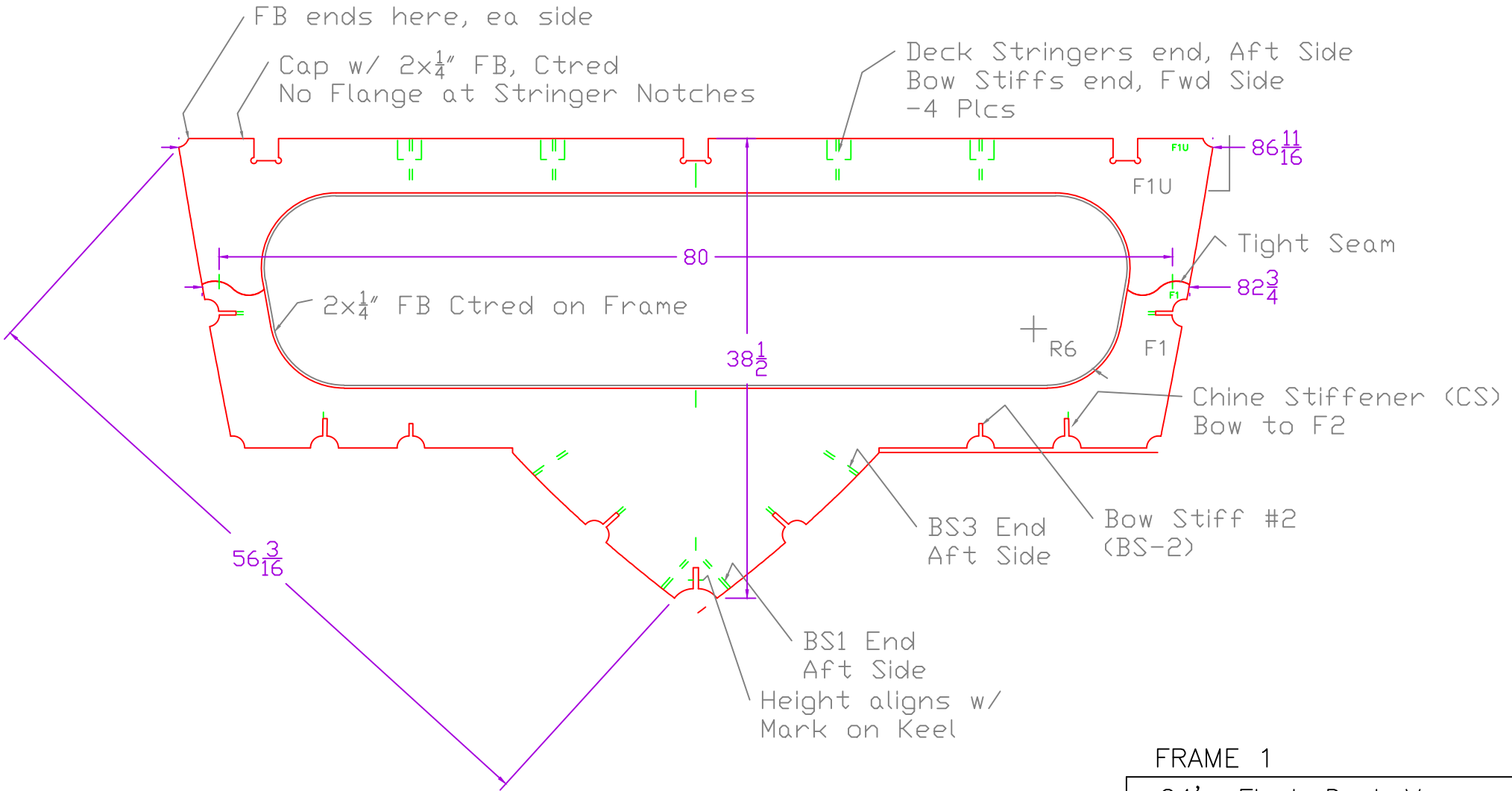


ROOF

24' Flush Deck V		
For: White Metal Welding		
SCALE 1/2" = 1'	DES/DWN WAL	DATE 10/17/16
<b>Response Marine, Inc.</b> Newburyport, MA, www.responsemarine.com		SHEET DWG. NO. 538-4-3

REV.	DESCRIPTION

# F1 Lk'g Fwd Install w/ Marks Aft

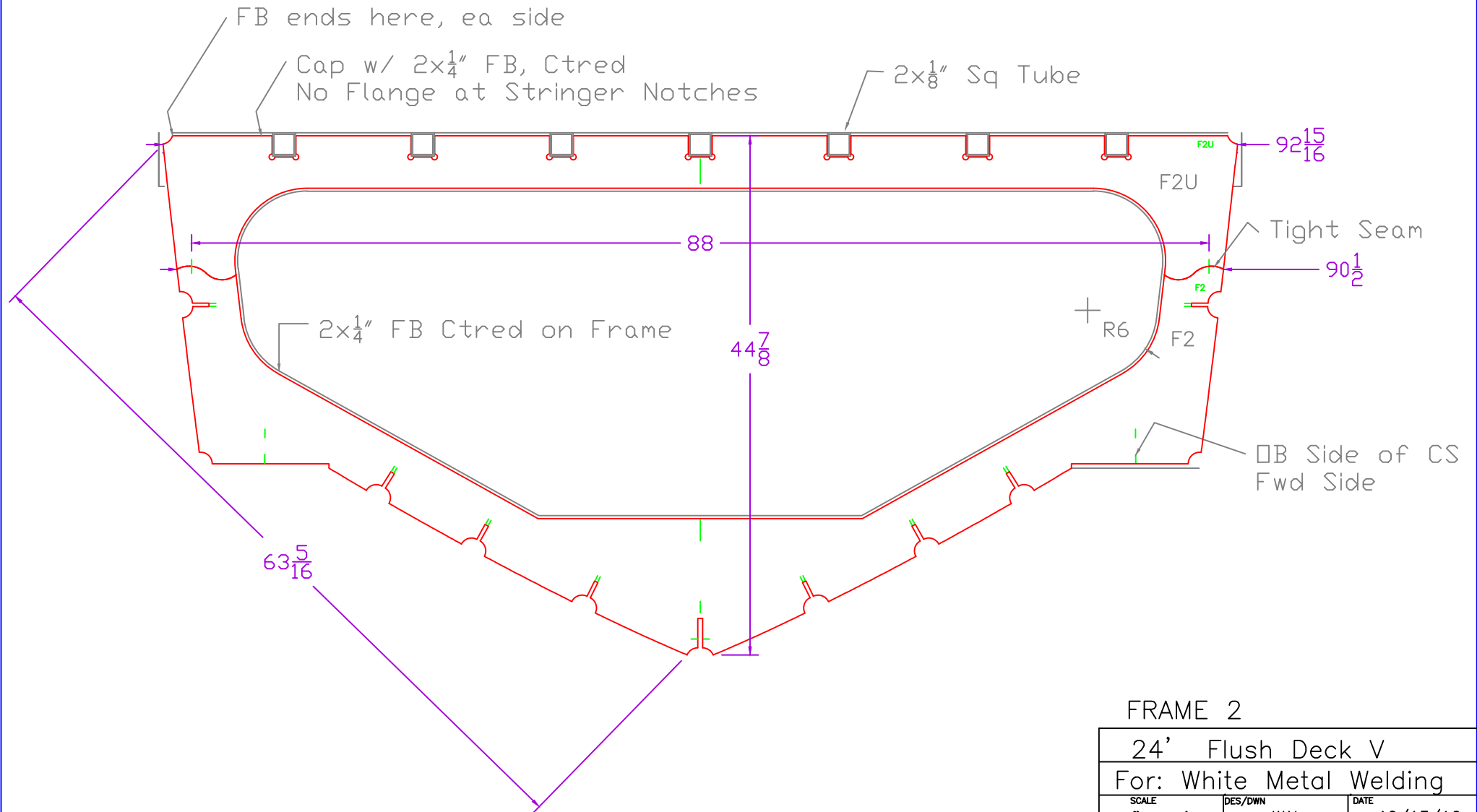


## FRAME 1

24' Flush Deck V		
For: White Metal Welding		
SCALE 1" = 1'	DES/DWN WAL	DATE 10/13/16
<b>Response Marine, Inc.</b> Newburyport, MA, <a href="http://www.responsemarine.com">www.responsemarine.com</a>		SHEET DWG NO. 538-F1

REV.	DESCRIPTION

F2 Lk'g Fwd  
Install w/ Marks Aft

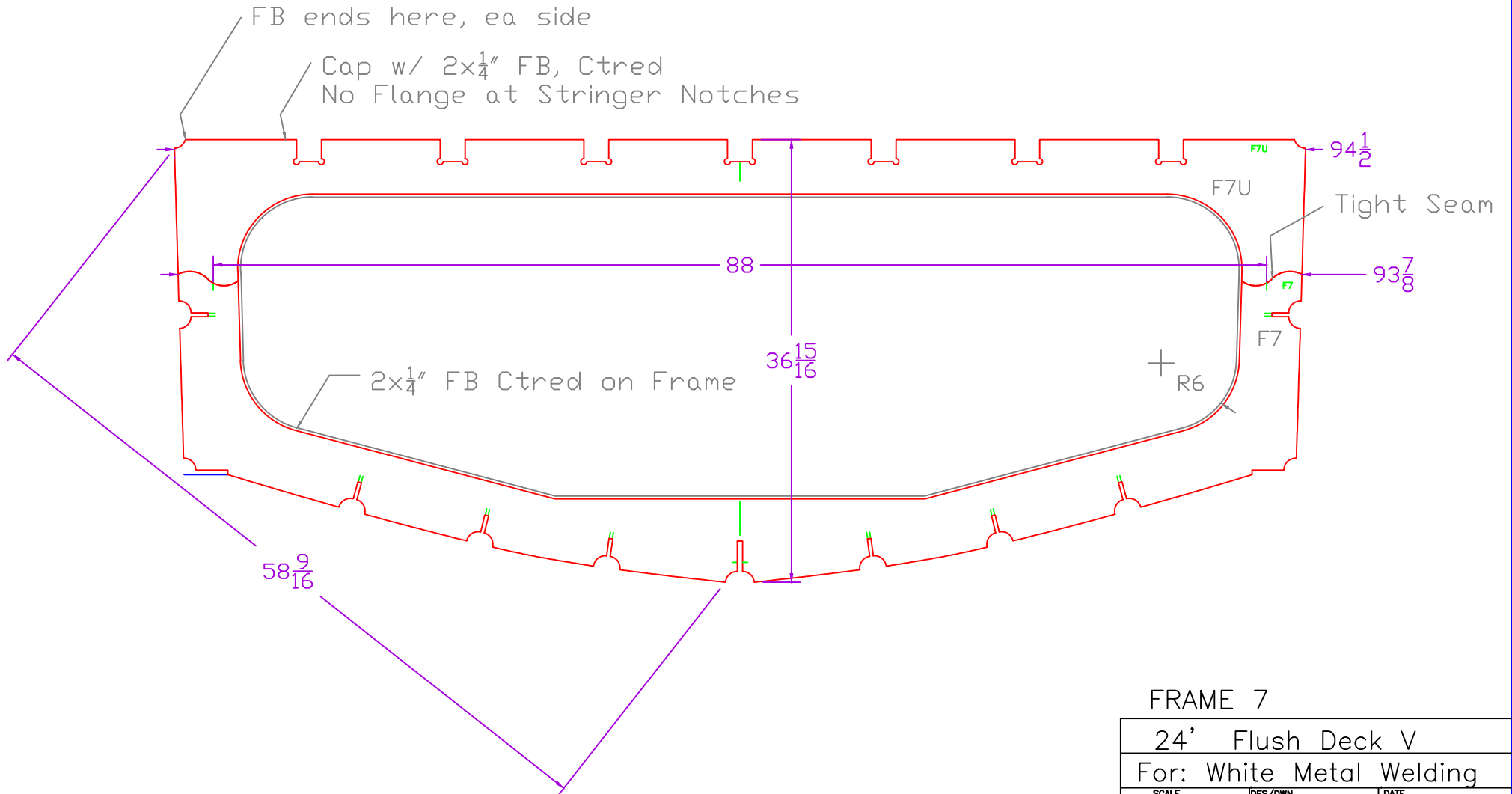


FRAME 2

24' Flush Deck V		
For: White Metal Welding		
SCALE 1" = 1'	DES/DWN WAL	DATE 10/13/16
Response Marine, Inc. Newburyport, MA, www.responsemarine.com		SHEET DWG NO. 538-F2

REV.	DESCRIPTION

F7 Lk'g Fwd  
Install w/ Marks Aft



FRAME 7

24' Flush Deck V		
For: White Metal Welding		
SCALE 1" = 1'	DES/DWN WAL	DATE 10/13/16
Response Marine, Inc.		SHEET
Newburyport, MA, www.responsemarine.com		DWG NO. 538-F7

REV.	DESCRIPTION