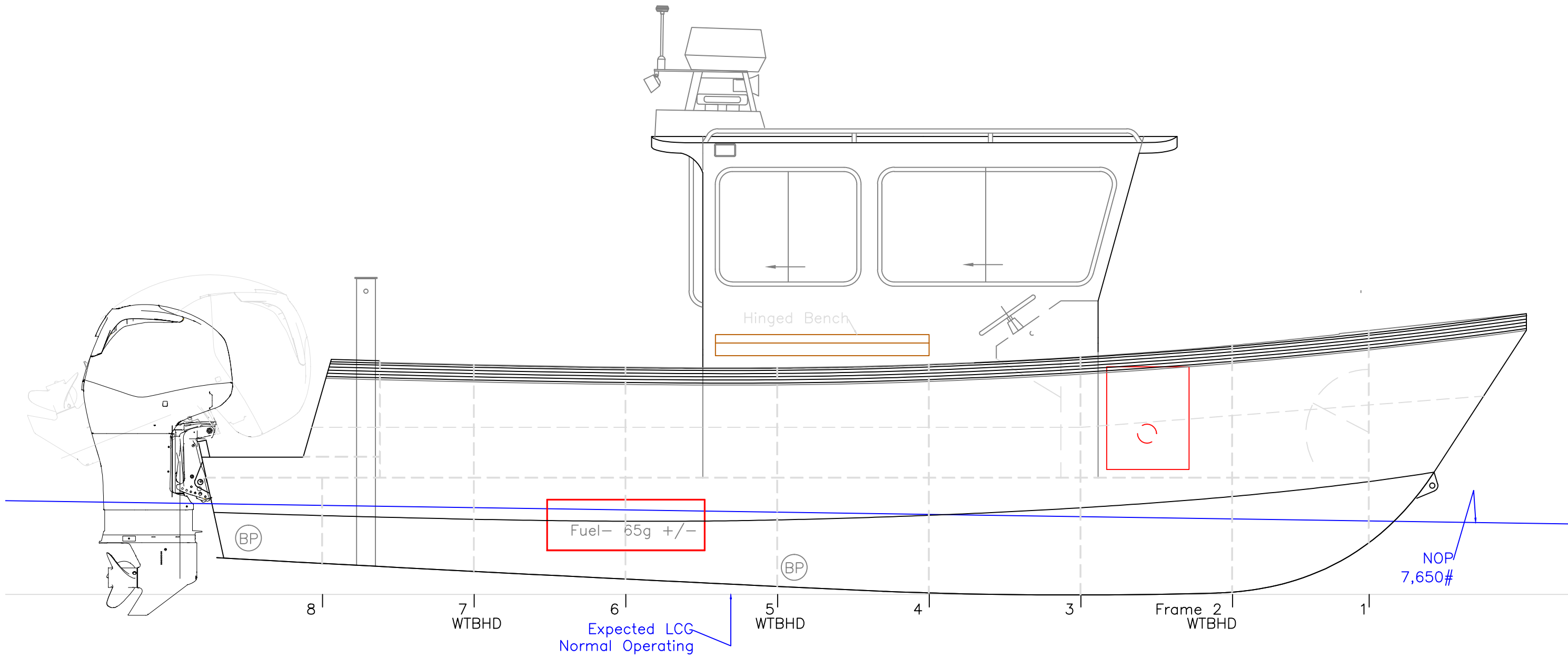


This drawing represents significant intellectual property of Response Marine, Inc. Reproduction of this drawing in any form, in whole or in part, including transmissions of any type, to third parties is forbidden without the prior written consent of Response Marine, Inc.

REV.	DESCRIPTION

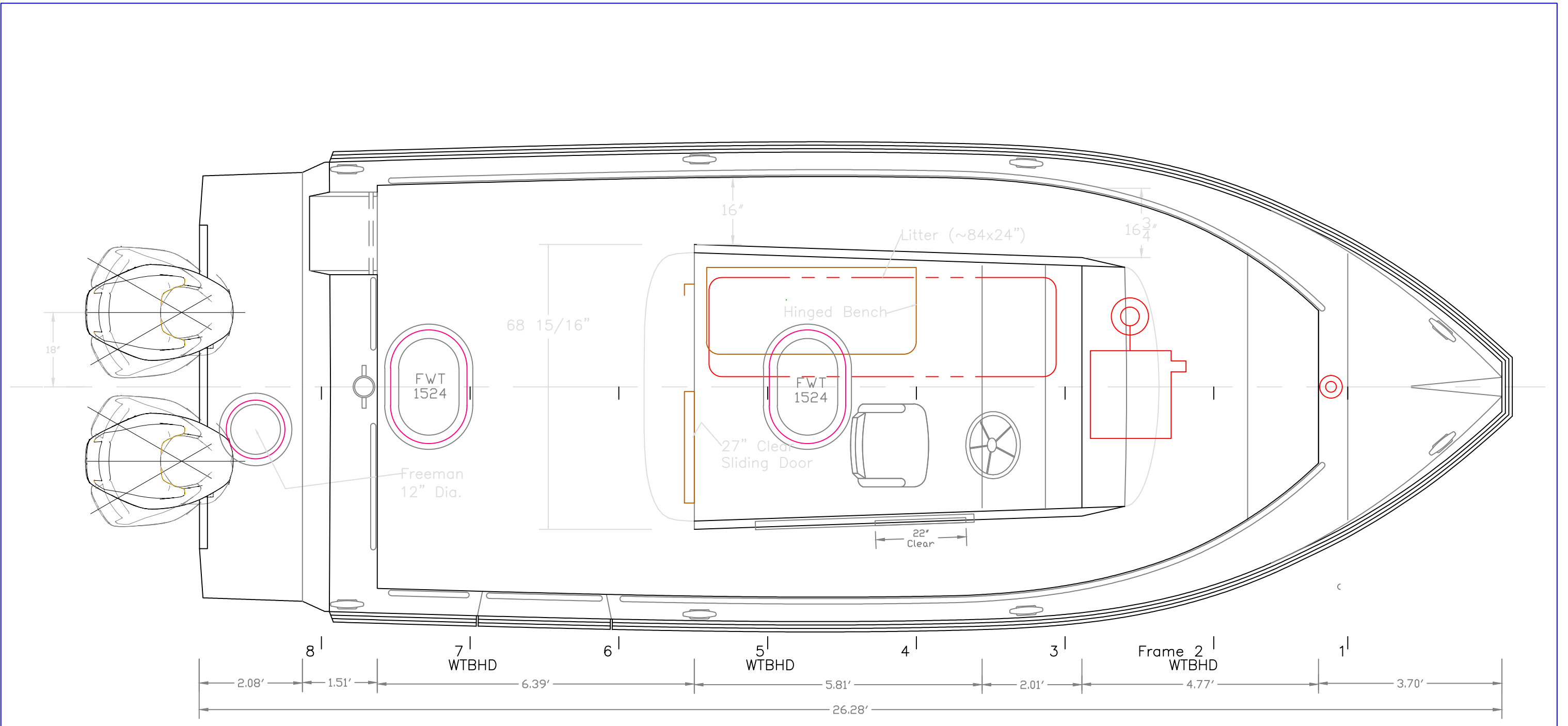
SACO 26' Fire/Rescue Boat		
O.B. PROFILE		For: Winninghoff Boats Inc.
SCALE 1/2"=1'	DES/DWN WAL/JCC	DATE 3/4/14
<b>Response Marine, Inc.</b> Newburyport, MA, <a href="http://www.responsemarine.com">www.responsemarine.com</a>		REV DWG NO. 465-1-01



This drawing represents significant intellectual property of Response Marine, Inc. Reproduction of this drawing in any form, in whole or in part, including transmissions of any type, to third parties is forbidden without the prior written consent of Response Marine, Inc.

REV.	DESCRIPTION

SACO 26' Fire/Rescue Boat		
I.B. PROFILE		For: Winninghoff Boats Inc.
SCALE 1/2"=1'	DES/DWN WAL/JCC	DATE 3/4/14
<b>Response Marine, Inc.</b>		REV
Newburyport, MA, <a href="http://www.responsemarine.com">www.responsemarine.com</a>		DWG NO. 465-1-02



This drawing represents significant intellectual property of Response Marine, Inc. Reproduction of this drawing in any form, in whole or in part, including transmissions of any type, to third parties is forbidden without the prior written consent of Response Marine, Inc.

SACO 26' Fire/Rescue Boat		
PLAN VIEW		
		For: Winninghoff Boats Inc.
SCALE	DES/DWN	DATE
1/2"=1'	WAL/JCC	3/4/14
<b>Response Marine, Inc.</b>		REV
Newburyport, MA, <a href="http://www.responsemarine.com">www.responsemarine.com</a>		DWG NO. 465-1-03

REV.	DESCRIPTION