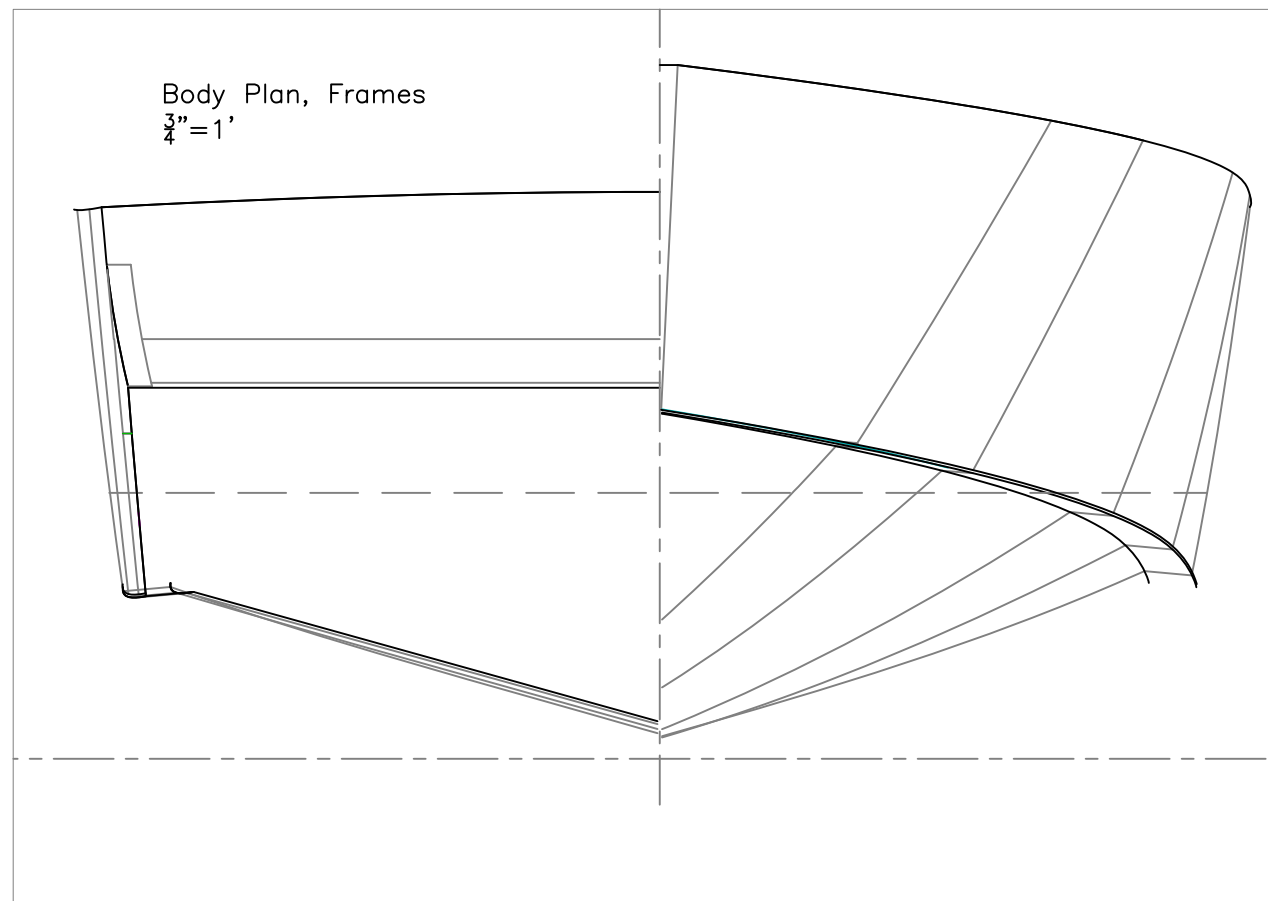
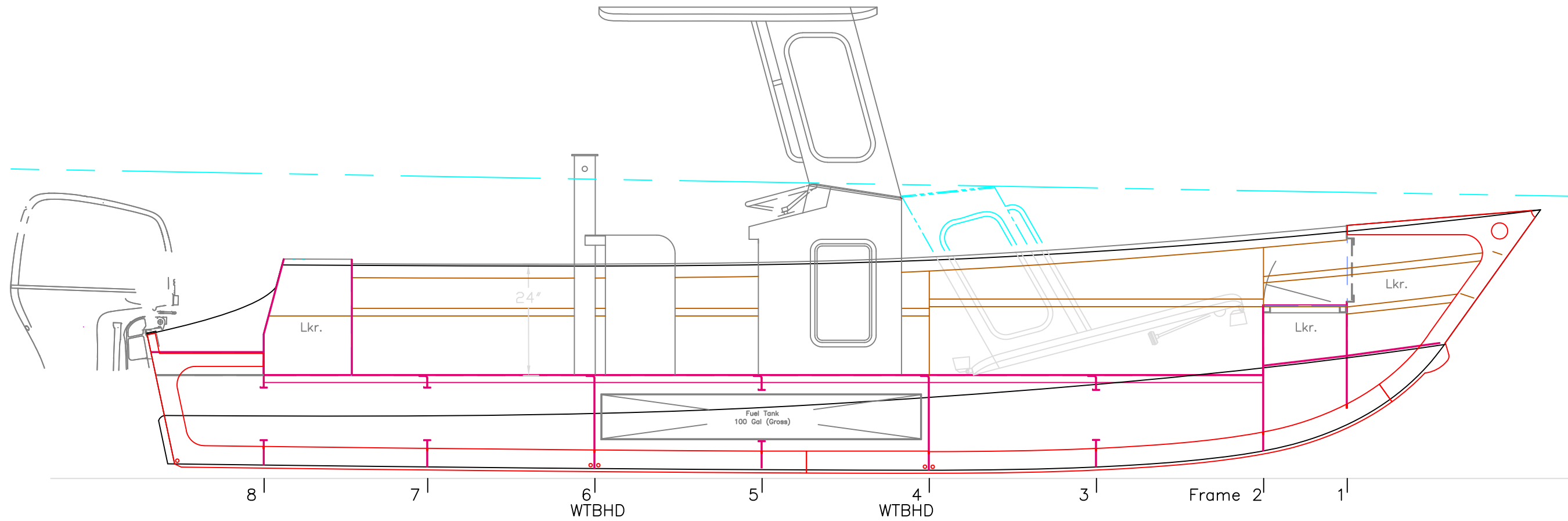


OUTBOARD VIEWS		
25'x8'3" CC, Pointview		
SCALE 1/2" = 1'	DES/DWN WAL	DATE 12/20/17
REV.	DESCRIPTION	DWG NO. 563-2
Response Marine, Inc. Newburyport, MA, www.responsemarine.com		



INB'D PROFILE & BODY PLAN		
25'x8'3" CC, Pointview		
SCALE 1/2" = 1'	DES/DWN WAL	DATE 12/20/17
REV.		REV.
DESCRIPTION		DWG NO. 563-3
Response Marine, Inc. Newburyport, MA, www.responsemarine.com		

REV. DESCRIPTION