

Response Marine, Inc.

STOCK LIST for 24' LC- Thatcher's Island
 File: WoodIsland24\ChesterMarine\ThatchersIsland
 revised: 4/3/15

Print Date: 5/25/2018

ORDERED FROM YARDE 150403

EXTRUSTION LIST:

C-D	Channel for Door	1	3" x 1-1/2" x 1.73#/ft, 6061 T6, 25' Lengths (AMERICAN STANDARD
F-BC	Flatbar Bottom Channel Flanges	6	1/4" x 9" Flatbar, 6061 T6, 12' Lengths
F-G	Flatbar Girder Flanges	14	3/16" x 1-1/2" Flatbar, 6061 T6, 12' Lengths
P-A	Pipe for Arch	3	2" Sch. 40 Pipe, 6063, 20' Lengths
P-D	Pipe for Door	5	1-1/2" Sch. 40 Pipe, 6063, 20' Lengths
P-R	Pipe for Rails	4	1" Sch. 40 Pipe, 6063, 20' Lengths

EXTRUSTION LIST:

QTY	Item	Alloy	Length (Ft)	#s/ft	#s/length	TOTAL #s	\$/each
1	3"x1.5" American Standard Channel	6061 T6	25	1.7300	43.250	43.250	\$88.663
6	.25"x9" Flatbar	6061 T6	12	2.6500	31.800	190.800	\$67.032
14	.190"x1.5" Flatbar	6061 T6	12	0.3318	3.981	55.734	\$7.960
3	2" Sch 40 Pipe	6063	20	1.2600	25.200	75.600	\$50.560
5	1.5" Sch 40 Pipe	6063	20	0.9400	18.800	94.000	\$36.660
4	1" Sch 40 Pipe	6063	20	0.5800	11.600	46.400	\$22.659

SubTotal 505.784

Plasma PLATE LIST:

QTY	Item	Alloy	Width (in)	Length (in)	Ft^2	#s/ft^2	EST Tot. #s
1	1/8" 5052 Plate	5052	48	60.000	20.0	1.8000	36
5	3/16" 5052 Plate	5052	72	120.000	300.0	2.7000	810
2	3/16" 5052 Plate	5052	72	96.000	96.0	2.7000	259
3	3/16" 5086/83 Plate	5086	96	288.000	576.0	2.7000	1555
1	3/16" 5086/83 Plate	5086	36	95.000	23.8	2.7000	64
1	1/4" 5086/83 Plate	5086	96	288.000	192.0	3.6000	691
1	1/4" 5086/83 Plate	5086	48	96.000	32.0	3.6000	115
1	1/4" 5086/83 Plate	5086	48	60.000	20.0	3.6000	72
1	Plasma per Nests	5052/86					3603

TOTAL Yarde Quote

Response Marine, Inc.

Plaz Parts for 24' LC- Thatcher's Island
File: WoodIsland24\ChesterMarine\ThatchersIsland
revised: 3/31/15

Print Date: 8/21/2019

1/8" 5052 Parts

<u>Date</u>	<u>Part #</u>	<u>Description</u>	<u>Pieces</u>	<u>Bending</u>	<u>Bending Instr</u>	<u>NOTES:</u>
3/31/2015	C3	Console Back, Lower	1	Y		On Marks, Match to Sides
3/31/2015	C4	Console Shelf	1	Y		On Marks, 90 Degrees
3/31/2015	T-U1B	Ullage Tank Bottom & Side	1	Y		On Marks, 90 Degrees
3/31/2015	T-U1T	Ullage Tank Top & Side	1	Y		On Marks, 90 Degrees
3/31/2015	T-U2	Ullage Tank Baffle	1			
3/31/2015	T-U3	Ullage Tank Ends	2			

Total Pieces: 7

3/16" 5052 Parts

<u>Date</u>	<u>Part #</u>	<u>Description</u>	<u>Pieces</u>	<u>Bending</u>	<u>Bending Instr</u>	<u>NOTES:</u>
3/31/2015	C1-P	Console Side, Port	1			
3/31/2015	C1-S	Console Side, Stbd	1			
3/31/2015	C2	Console Face/Body	1	Y		On Marks, Match to Sides
4/1/2015	DP-1	Deck Plate	4			
4/1/2015	DP-1R	Deck Plate Ring	4			
3/5/2015	F1-P	Frame 1, Topside, Port	1			
3/5/2015	F1-S	Frame 1, Topside, Stbd	1			
3/6/2015	F2	Frame 2	1	Y		B-1
3/6/2015	F2-P	Frame 2, Topside, Port	1			
3/6/2015	F2-S	Frame 2, Topside, Stbd	1			
3/6/2015	F3	Frame 3	1	Y		B-1
3/6/2015	F3-P	Frame 3, Topside, Port	1	Y		B-1
3/6/2015	F3-S	Frame 3, Topside, Stbd	1	Y		B-1
3/6/2015	F4	Frame 4	1	Y		B-1
3/6/2015	F5	Frame 5	1	Y		B-1
3/6/2015	F5-P	Frame 5, Topside, Port	1	Y		B-1
3/6/2015	F5-S	Frame 5, Topside, Stbd	1	Y		B-1
3/6/2015	F6	Frame 6	1	Y		B-1
3/6/2015	F7	Frame 7	1	Y		B-1
3/6/2015	F7-P	Frame 7, Topside, Port	1			
3/6/2015	F7-S	Frame 7, Topside, Stbd	1			
3/24/2015	FDC-BP	Foredeck Coaming, Aft Jog, Port	1			
3/24/2015	FDC-BS	Foredeck Coaming, Aft Jog, Stbd	1			
3/6/2015	S-AP	Sole, Fwd, Port	1			
3/6/2015	S-AS	Sole, Fwd, Stbd	1			
3/6/2015	S-BP	Sole, Mid, Port	1			
3/6/2015	S-BS	Sole, Mid, Stbd	1			
3/6/2015	S-CP	Sole, Aft, Port	1			
3/6/2015	S-CS	Sole, Aft, Stbd	1			
3/6/2015	SPB	Splashwell Bulkhead	1			
3/31/2015	T1	Fuel Tank Body	1	Y		On Marks, Match to Ends
3/31/2015	T2	Fuel Tank Transverse Baffles	2			
3/31/2015	T3	Fuel Tank Ends	2			
3/31/2015	T4	Fuel Tank Top	1			

Total Pieces: 42

3/16" 5083/86 Parts

<u>Date</u>	<u>Part #</u>	<u>Description</u>	<u>Pieces</u>	<u>Bending</u>	<u>Bending Instr</u>	<u>NOTES:</u>
3/6/2015	BC-W	Bottom Channel Webs	6			
3/5/2015	BS-1P	Bottom Longitudinal (Girder) 1, Pc	1			
3/5/2015	BS-1S	Bottom Longitudinal (Girder) 1, Stl	1			
3/5/2015	BS-2P	Bottom Longitudinal (Girder) 2, Pc	1			
3/5/2015	BS-2S	Bottom Longitudinal (Girder) 2, Stl	1			
3/5/2015	BS-3P	Bottom Longitudinal (Girder) 3, Pc	1			
3/5/2015	BS-3S	Bottom Longitudinal (Girder) 3, Stl	1			

3/6/2015	FDC-AP	Foredeck Coaming, Fwd, Port	1		
3/6/2015	FDC-AS	Foredeck Coaming, Fwd, Stbd	1		
3/5/2015	KS-A	Keel Stringer, Stem to F3	1		
3/5/2015	KS-B	Keel Stringer, F6 to Tran	1		
3/26/2015	SD-AP	Side Deck, Fwd, Port	1		
3/26/2015	SD-AS	Side Deck, Fwd, Stbd	1		
3/26/2015	SD-BP	Side Deck, Aft, Port	1		
3/26/2015	SD-BS	Side Deck, Aft, Stbd	1		
3/26/2015	SDC-P	Side Deck Coaming, Port	1		
3/26/2015	SDC-S	Side Deck Coaming, Stbd	1		
3/24/2015	SPS-P	Splashwell Side, Port	1		
3/24/2015	SPS-S	Splashwell Side, Stbd	1		
3/26/2015	TS-AP	Topsides, Fwd, Port	1		
3/26/2015	TS-AS	Topsides, Fwd, Stbd	1		
3/26/2015	TS-BP	Topsides, Aft, Port	1		
3/26/2015	TS-BS	Topsides, Aft, Stbd	1		
3/25/2015	TK	Transom Knees	3		
3/6/2015	TSL-AP	Topsides Stringer, Fwd, Port	1	Y	B-1
3/26/2015	TSL-AS	Topsides Stringer, Fwd, Stbd	1	Y	B-1
3/6/2015	TSL-BP	Topsides Stringer, Aft, Port	1	Y	B-1
3/6/2015	TSL-BS	Topsides Stringer, Aft, Stbd	1	Y	B-1

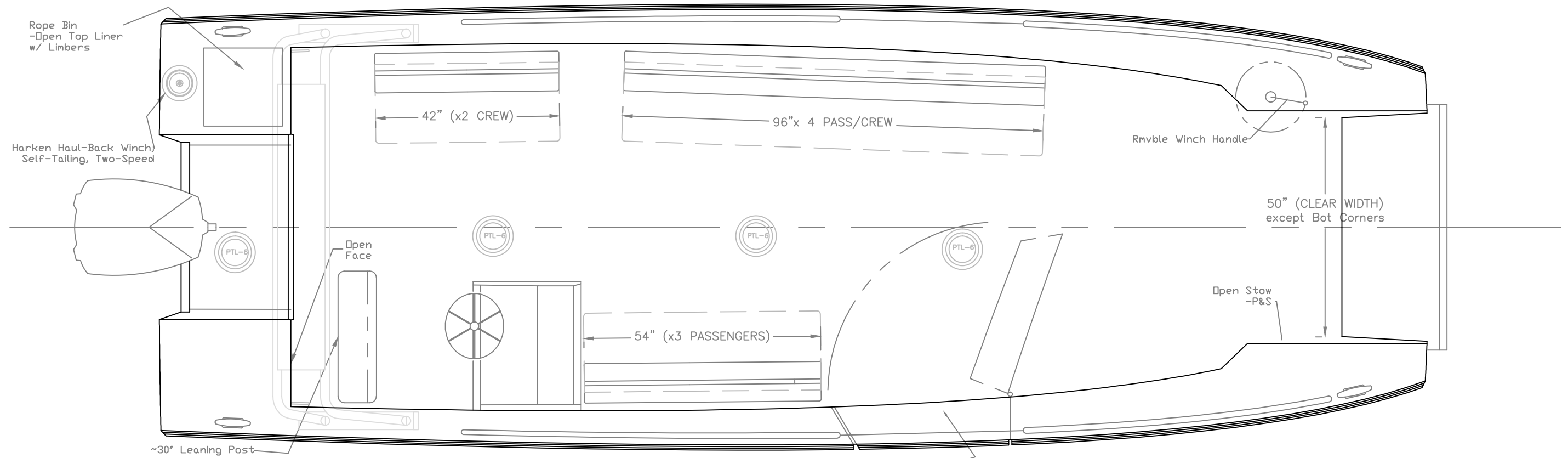
Total Pieces: 35

1/4" 5083/86 Parts

<u>Date</u>	<u>Part #</u>	<u>Description</u>	<u>Pieces</u>	<u>Bending</u>	<u>Bending Instr</u>	<u>NOTES:</u>
3/25/2015	B-P	Bow Plate, Port	1			
3/25/2015	B-S	Bow Plate, Stbd	1			
3/24/2015	BOT	Bottom Plate	1			
3/25/2015	BD	Bow Door	1			
3/30/2015	DDDA	Dive Door Door Face, Fwd	1			
3/30/2015	DDDF	Dive Door Door Frame, Aft	1	Y		Bend as Marked, 65 Deg. @ B-1A Back Guage Setting
3/30/2015	DDHF	Dive Door Hull Frame, Aft	1	Y		Bend as Marked, 65 Deg. @ B-1A Back Guage Setting
3/30/2015	DDHT	Dive Door Hull Threshold	1	Y		Bend as Marked, 90 Deg. @ B-1A Back Guage Setting PLUS 1"
3/30/2015	DDTF	Dive Door Door Bottom	1	Y		Bend as Marked, 90 Deg. @ B-1A Back Guage Setting
3/24/2015	TR	Transom	1			

Total Pieces: 10

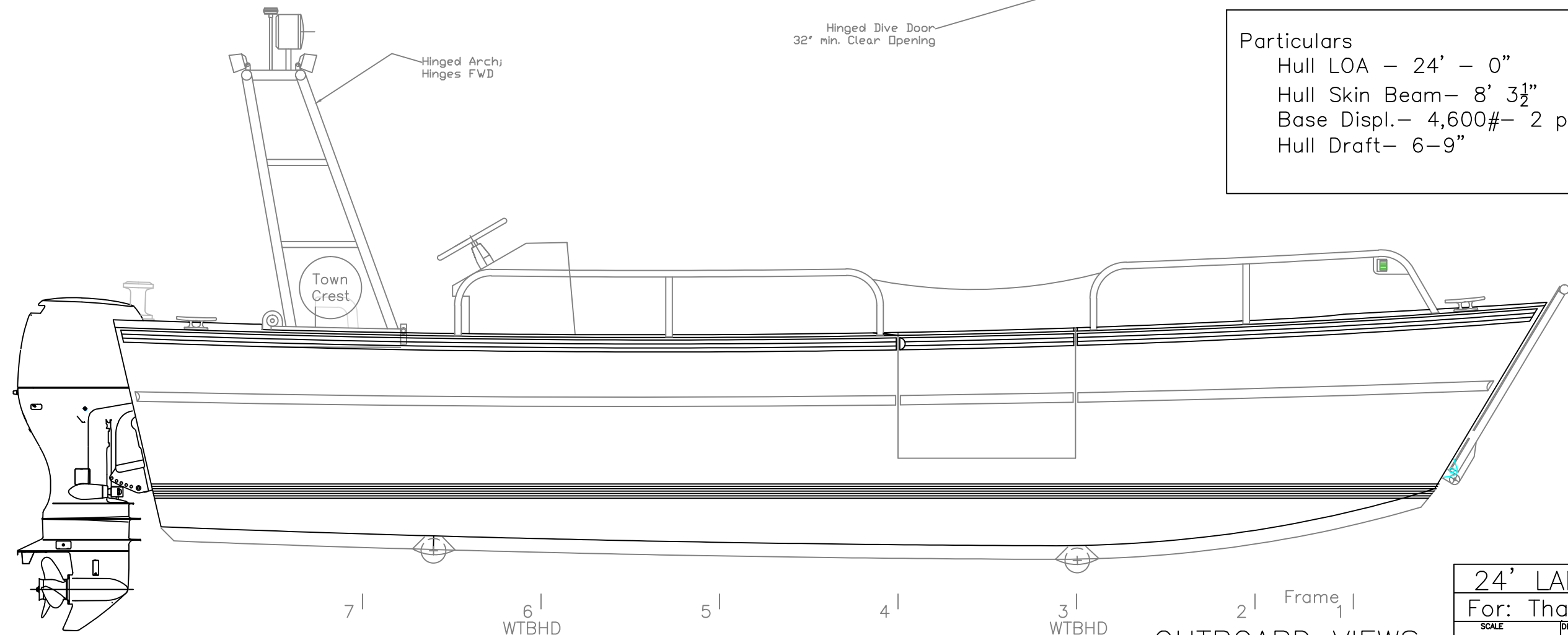
Total Cut Parts 94



Hinged Dive Door
32' min. Clear Opening

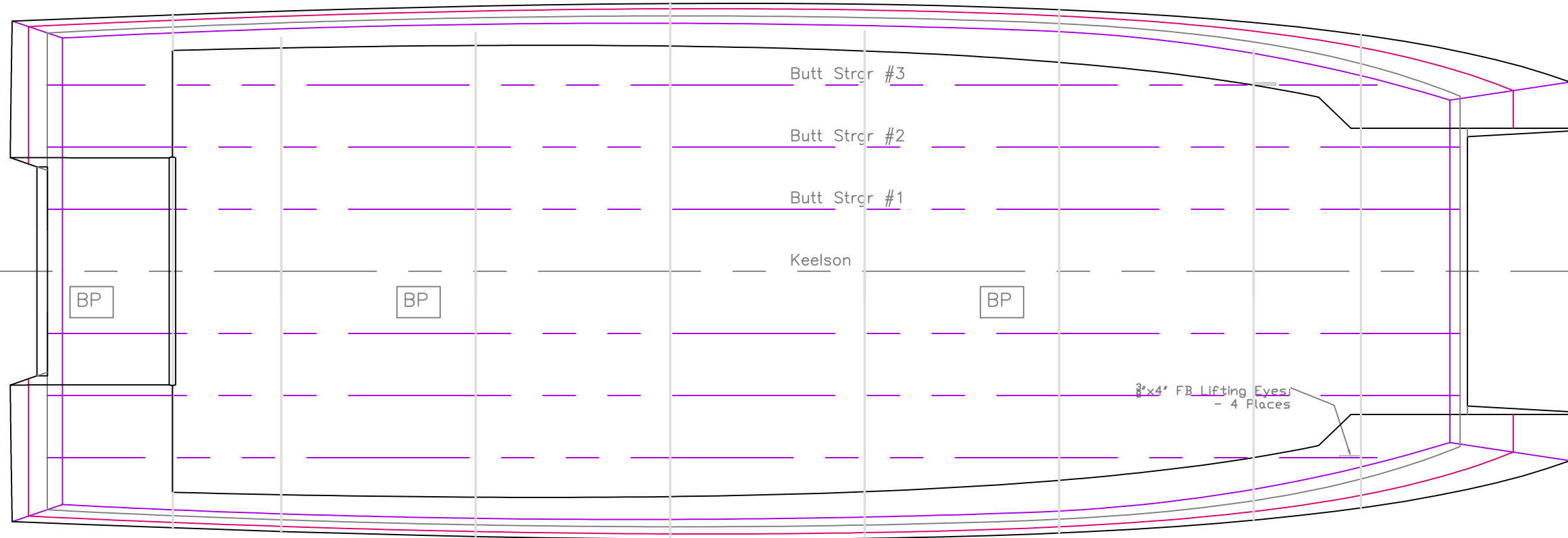
Hinged Arch
Hinges FWD

Particulars
 Hull LOA - 24' - 0"
 Hull Skin Beam - 8' 3 1/2"
 Base Displ. - 4,600# - 2 pax, 1/2 fuel
 Hull Draft - 6-9"

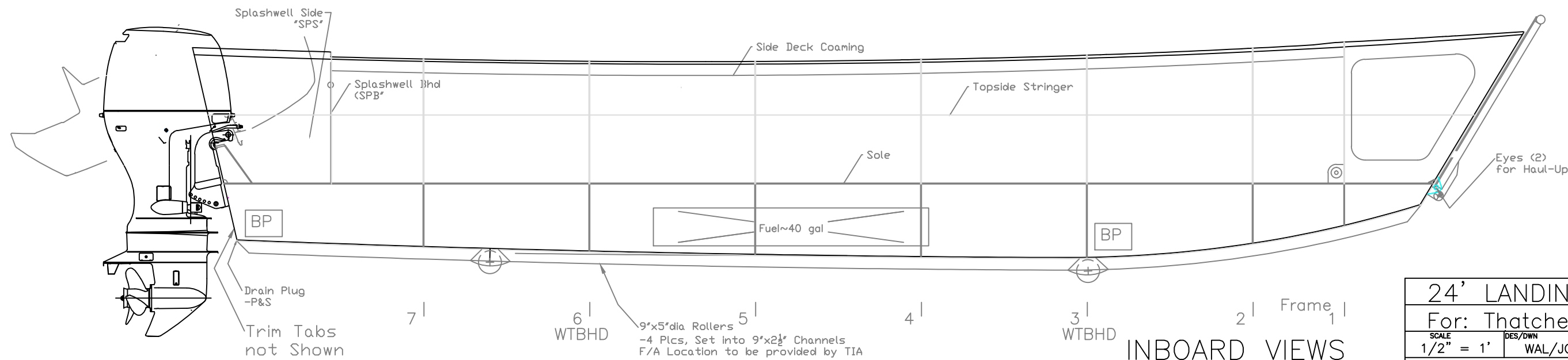


REV. DESCRIPTION
 1 Frame 1
OUTBOARD VIEWS

24' LANDING CRAFT		
For: Thatchers Island		
SCALE 1/2" = 1'	DES/DWN WAL/JCC	DATE 3/3/14
Response Marine, Inc. Newburyport, MA www.responsemarine.com		SHEET DWG NO. 497-1



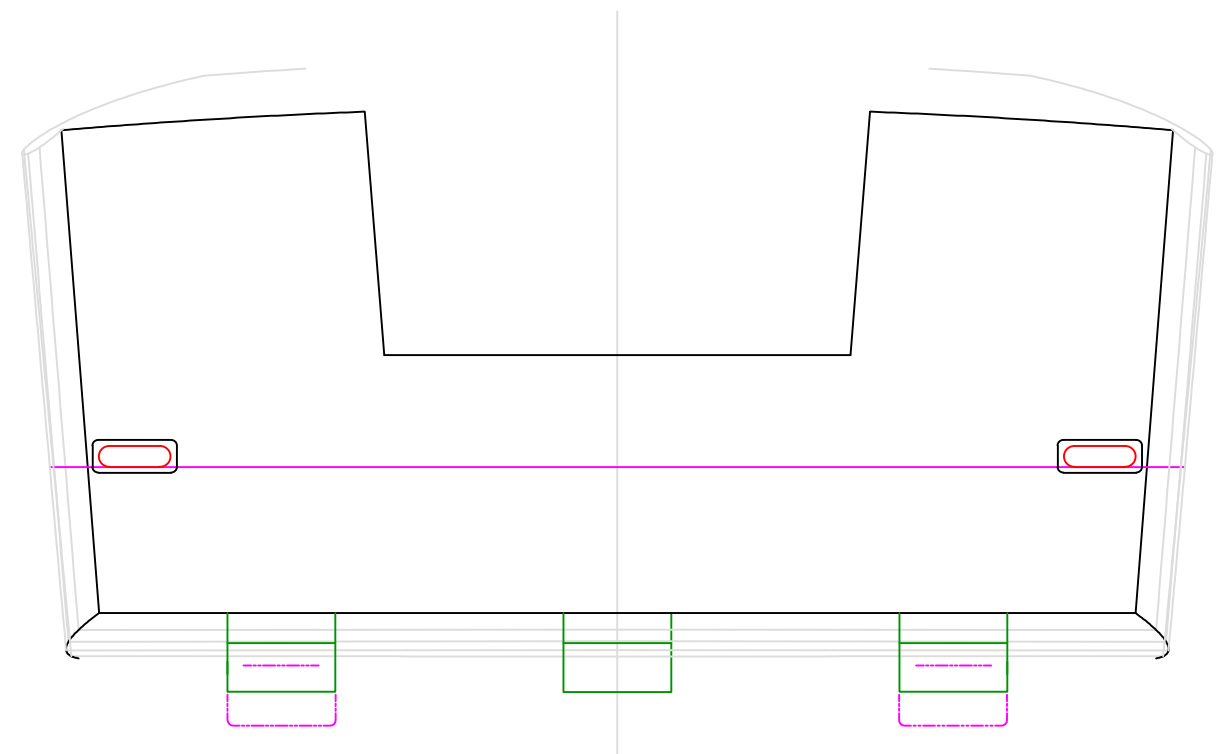
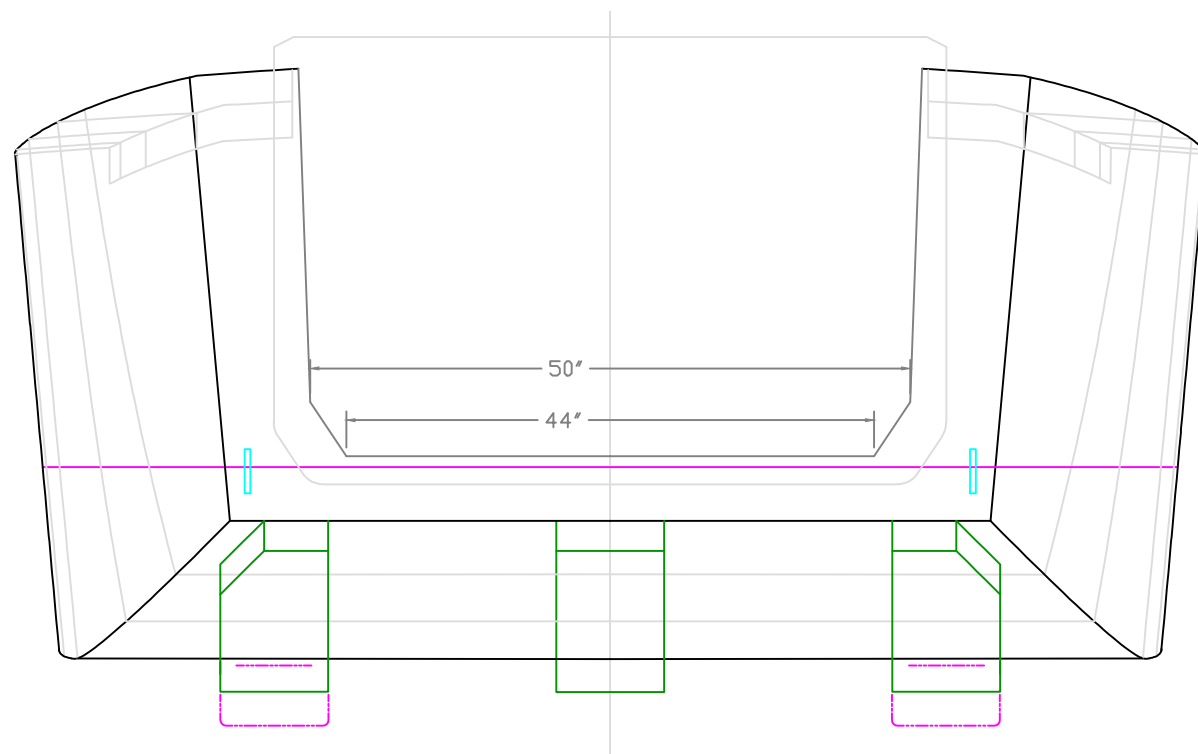
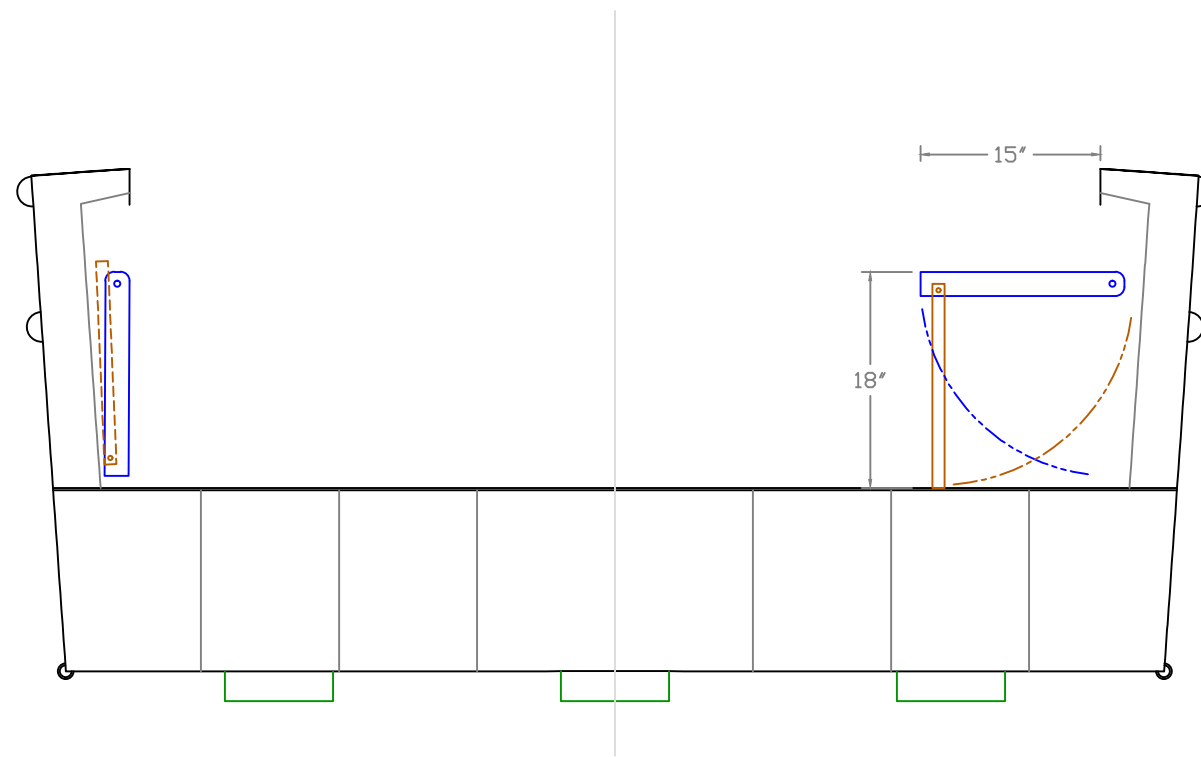
Butt Strgr's & Keelson Capped with 3/6"x 1 1/2" FB



INBOARD VIEWS

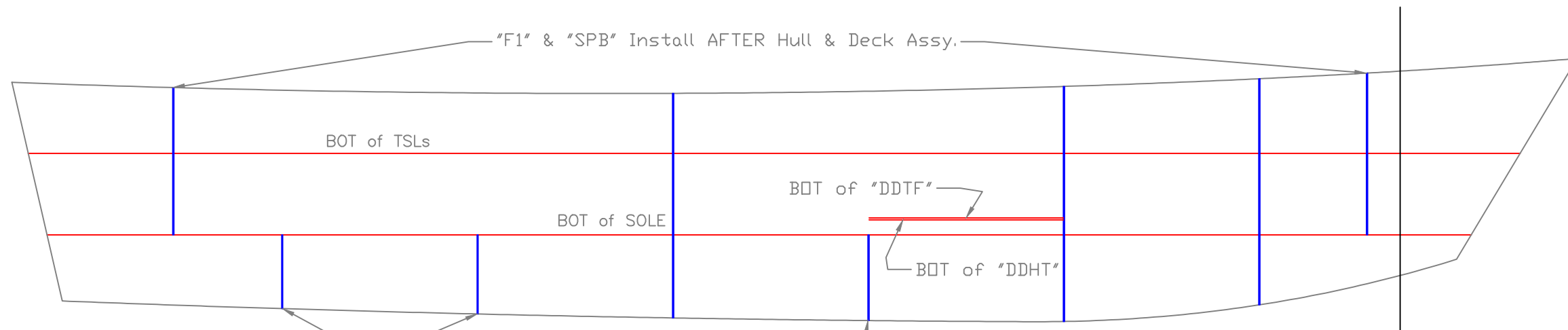
REV. DESCRIPTION

24' LANDING CRAFT		
For: Thatchers Island		
SCALE 1/2" = 1'	DES/DWN WAL/JCC	DATE 3/3/15
Response Marine, Inc. Newburyport, MA, www.responsemarine.com		SHEET DWG NO. 497-2

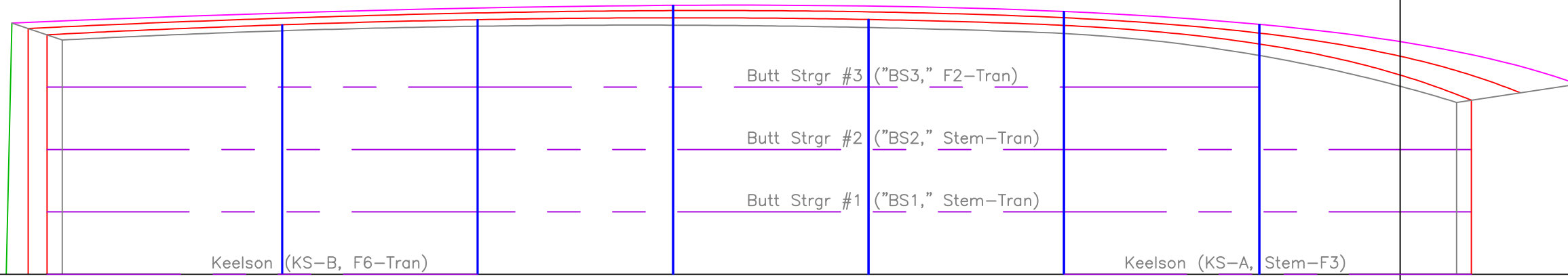


END & SECTION VIEWS

24' LANDING CRAFT		
For: Thatchers Island		
SCALE 3/4" = 1'	DES/DWN WAL/JCC	DATE 3/3/15
REV.		SHEET
DESCRIPTION		DWG NO. 497-3
Response Marine, Inc. Newburyport, MA, www.responsemarine.com		



7 | 6 | 5 | 4 | 3 | 2 | Frame 1 |
 WT BHD WT BHD

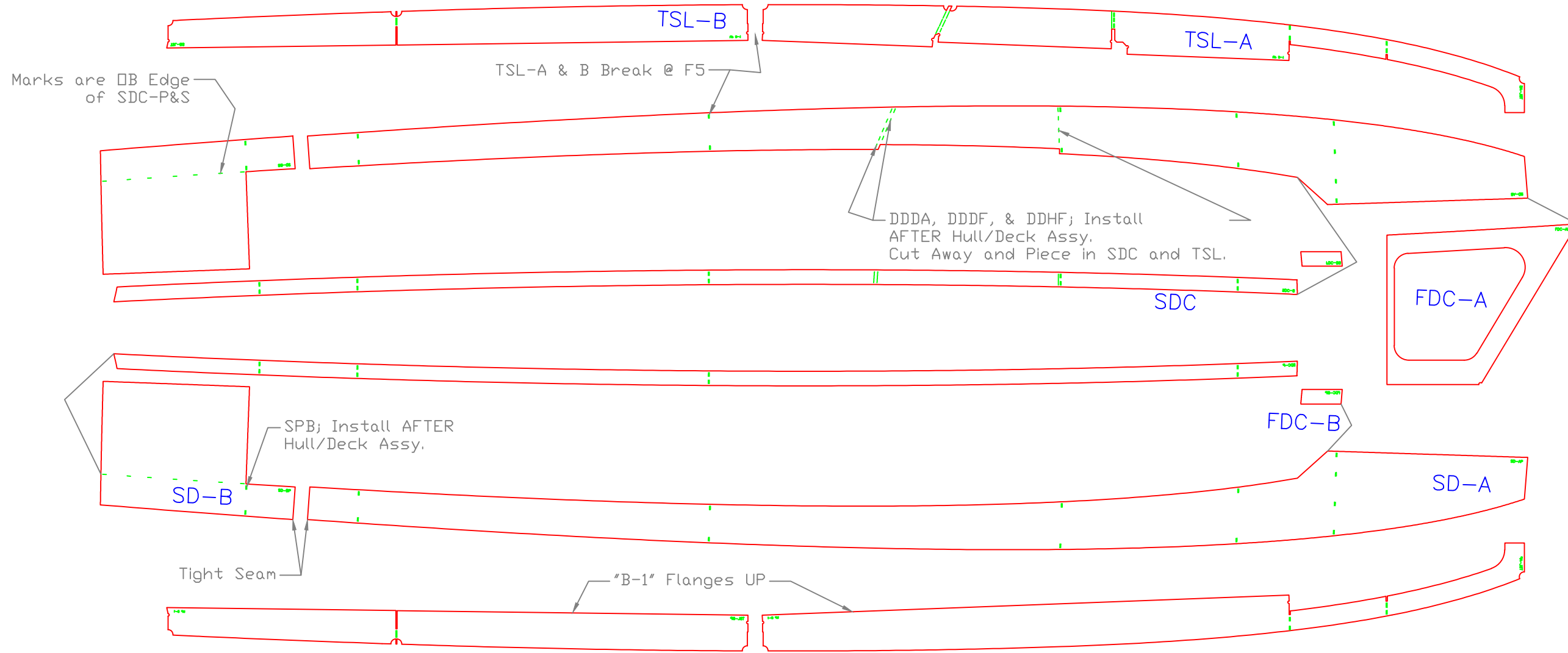


7 | 6 | 5 | 4 | 3 | 2 | Frame 1 |
 WT BHD WT BHD

BOTTOM & TOPSIDES LAYOUTS

24' LANDING CRAFT		
For: Thatchers Island		
SCALE 1/2" = 1'	DES/DWN WAL/JCC	DATE 4/20/15
Response Marine, Inc. Newburyport, MA www.responsemarine.com		SHEET DWG NO. 497-01

REV.	DESCRIPTION

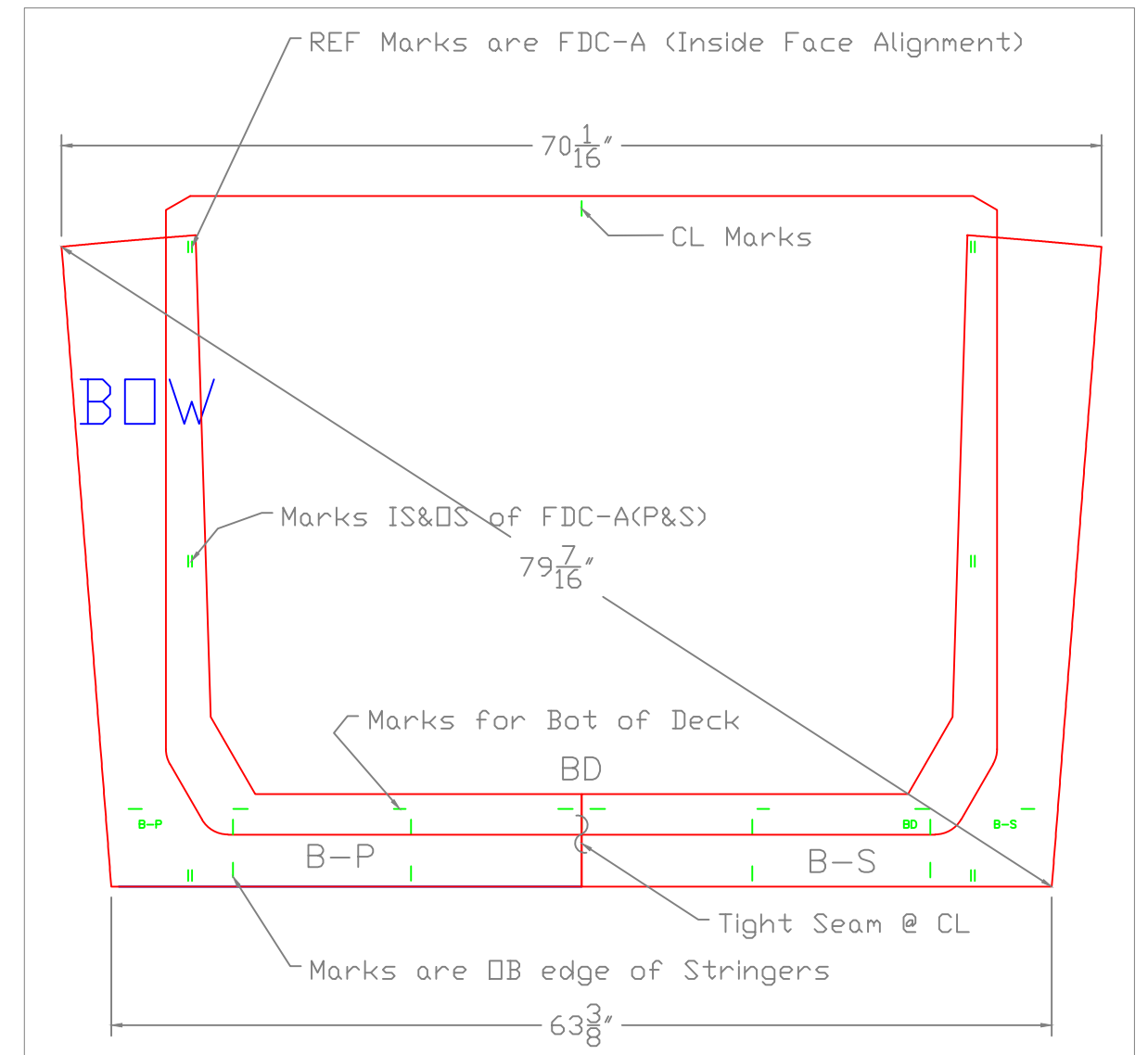
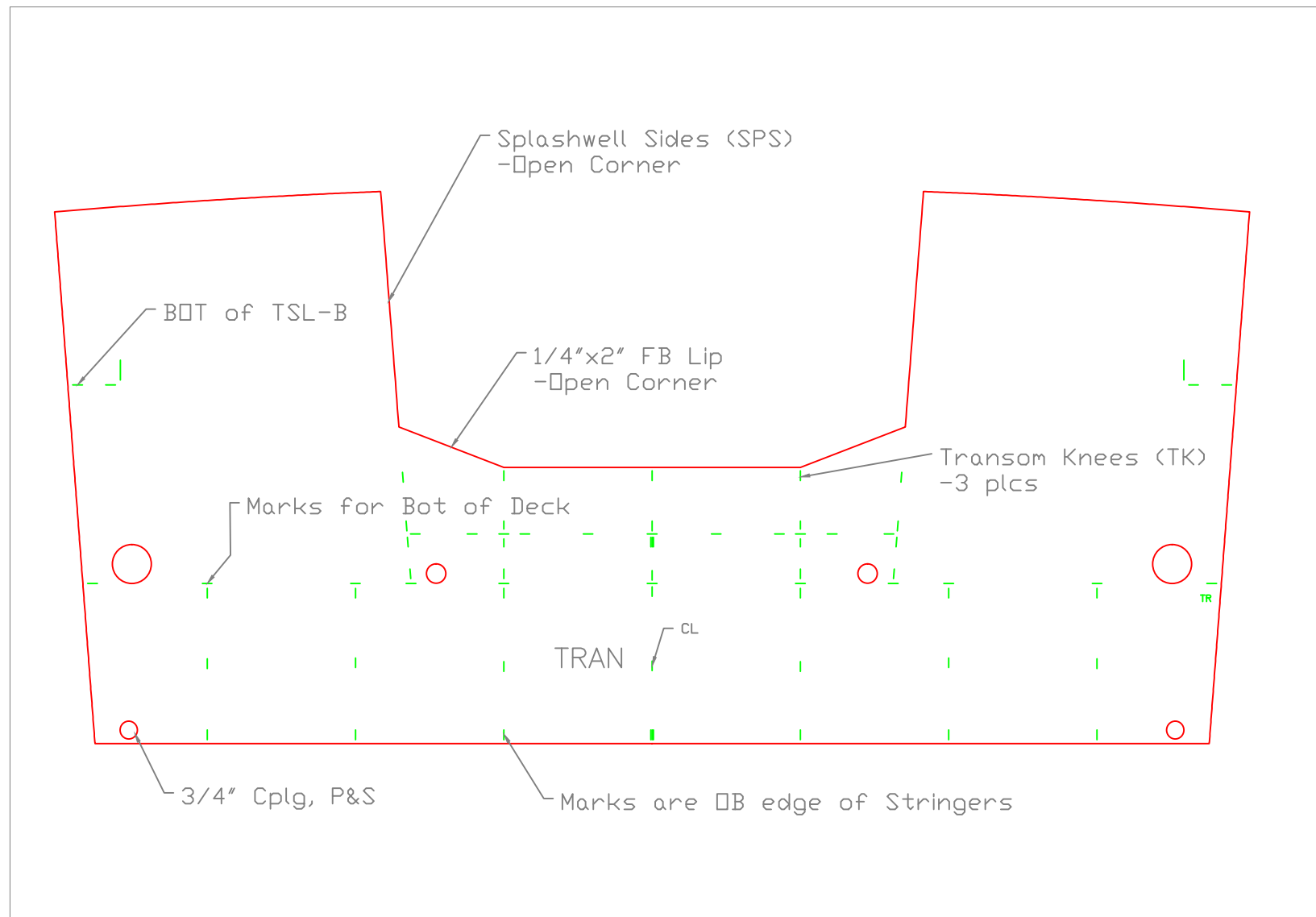


NOTE: Parts are VIEWED FROM BOTTOM

SIDEDECKS & TS
STRUCTURE

REV.	DESCRIPTION

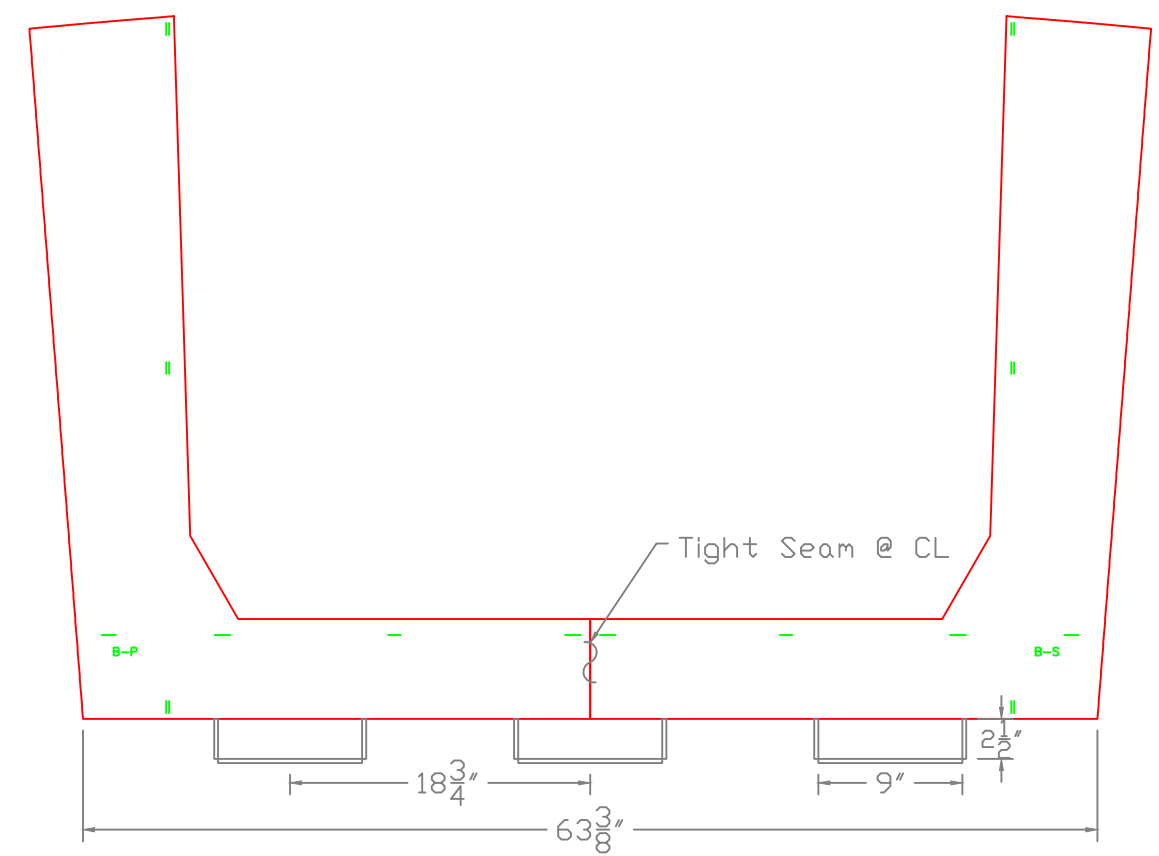
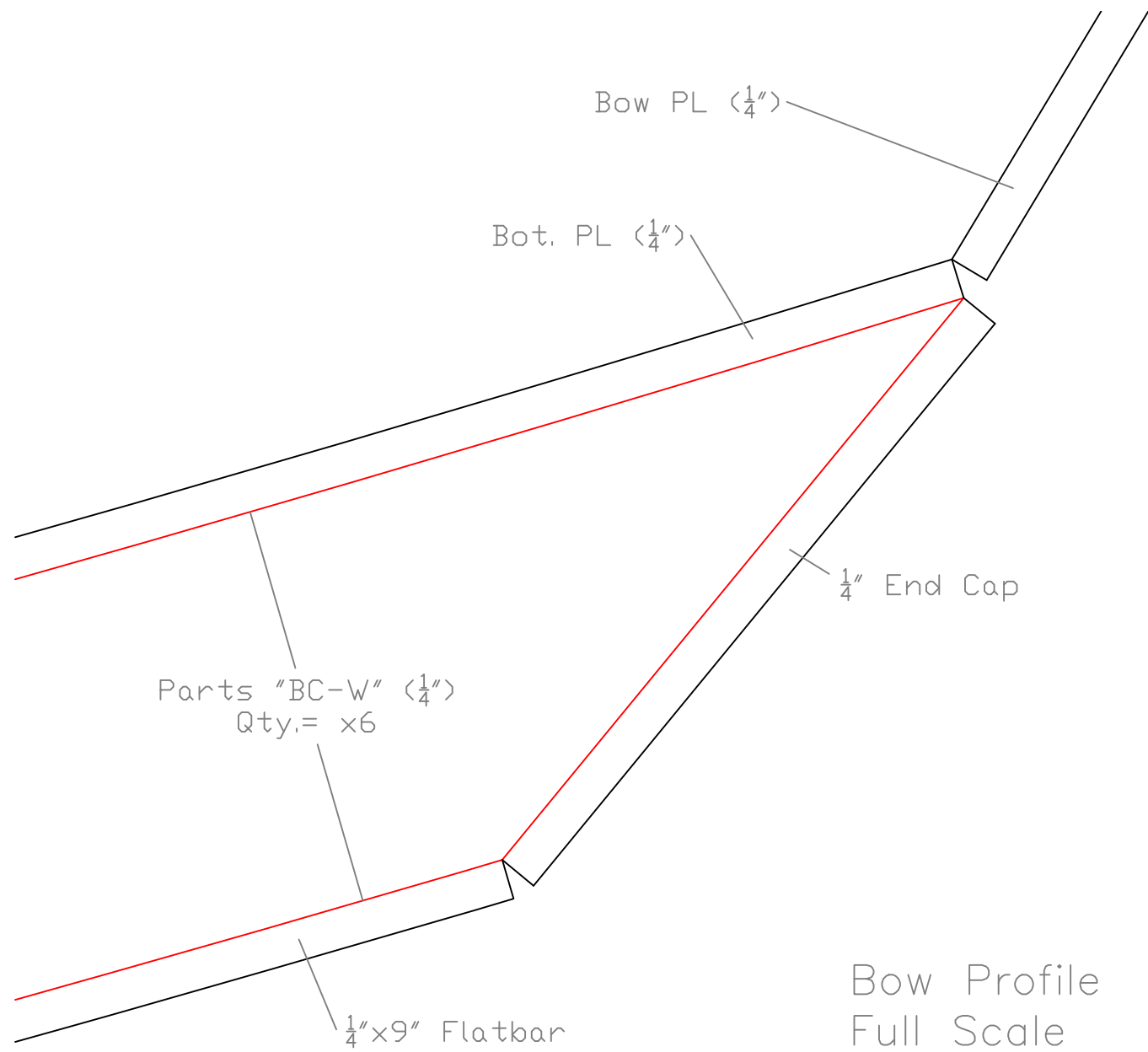
24' LANDING CRAFT		
For: Thatchers Island		
SCALE 1/2" = 1'	DES/DWN WAL/JCC	DATE 4/20/15
Response Marine, Inc.		SHEET
Newburyport, MA, www.responsemarine.com		DWG NO. 497-02



TRANSOM & BOW

REV.	DESCRIPTION

24' LANDING CRAFT		
For: Thatchers Island		
SCALE 1" = 1'	DES/DWN WAL/JCC	DATE 4/20/15
Response Marine, Inc. Newburyport, MA, www.responsemarine.com		SHEET DWG NO. 497-03



- Notes:
- 1) Channels are 2½"x¼" Web (Parts "BC-W") & ¼"x9" Flatbar
 - 2) CL Channel, L= 18'3" (Run from Bow aft)
 - 3) Outboard Channels (4), L=8' (Run from Bow aft)
 - 4) Cap Both Ends w/ ¼" PL.
 - 5) Aft end caps to have ½" diameter semi-circle or Vee opening at center/bottom for drainage.
 - 6) Stitch weld 3" welds on 9" ctrs.

BOTTOM CHANNELS

REV.	DESCRIPTION

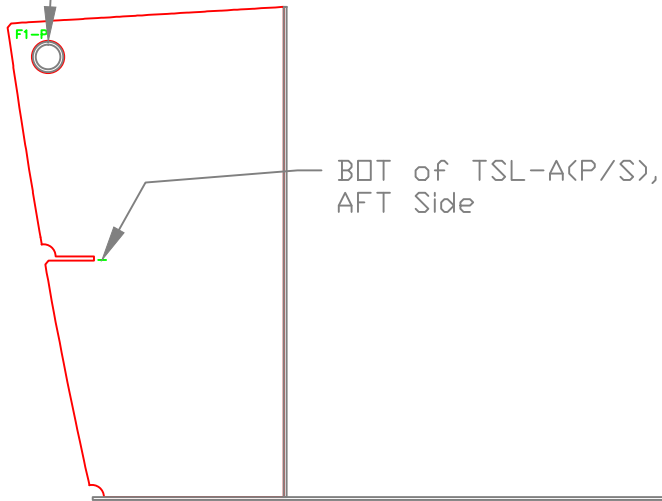
24' LANDING CRAFT		
For: Thatchers Island		
SCALE	DES/DWN	DATE
NOTED	WAL/JCC	4/20/15
Response Marine, Inc.		SHEET
Newburyport, MA www.responsemarine.com		DWG NO. 497-04

Lk'g FWD

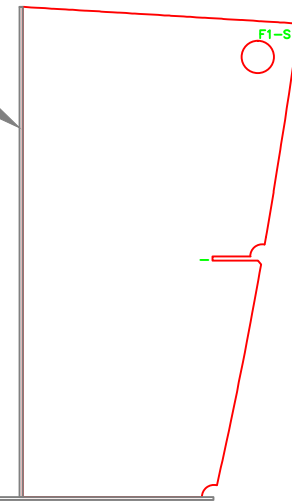
Install Marks AFT

Install AFTER Deck Assy.

Upper Conduit:
1½" Sch. 40 PVC Pipe;
1.900" OD



Open-Crnr Weld
w/ FDC-A(P/S)



F1

24' LANDING CRAFT
For: Thatchers Island

SCALE 1" = 1'	DES/DWN WAL/JCC	DATE 4/21/15
------------------	--------------------	-----------------

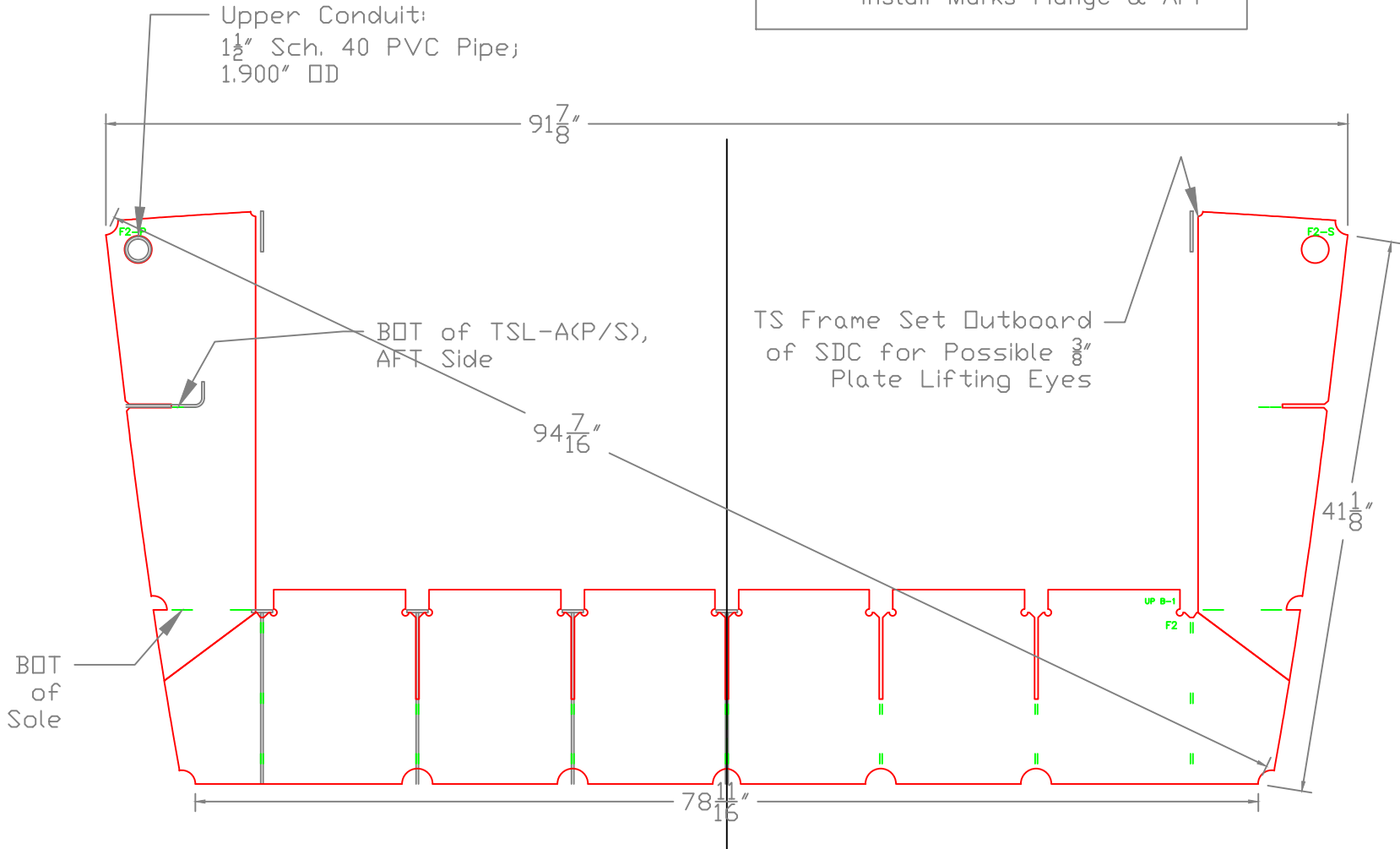
Response Marine, Inc.

Newburyport, MA, www.responsemarine.com

SHEET
DWG NO. 497-F1

REV. DESCRIPTION

Lk'g FWD
Install Marks Flange & AFT



F2

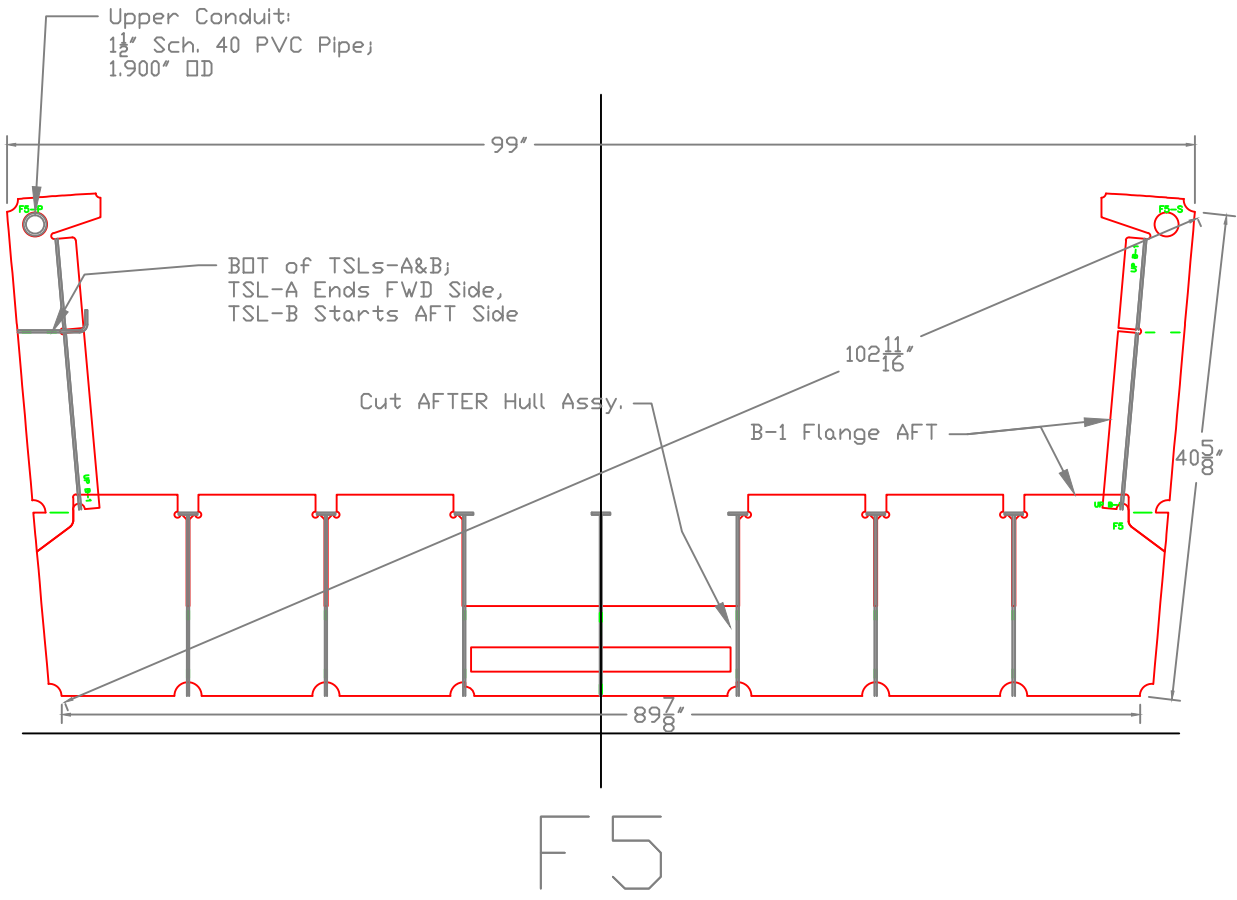
24' LANDING CRAFT
For: Thatchers Island

SCALE 1" = 1'	DES/DWN WAL/JCC	DATE 4/21/15
------------------	--------------------	-----------------

Response Marine, Inc.		SHEET
Newburyport, MA, www.responsemarine.com		DWG NO. 497-F2

REV.	DESCRIPTION

Lk'g FWD
Install Marks Flange & AFT



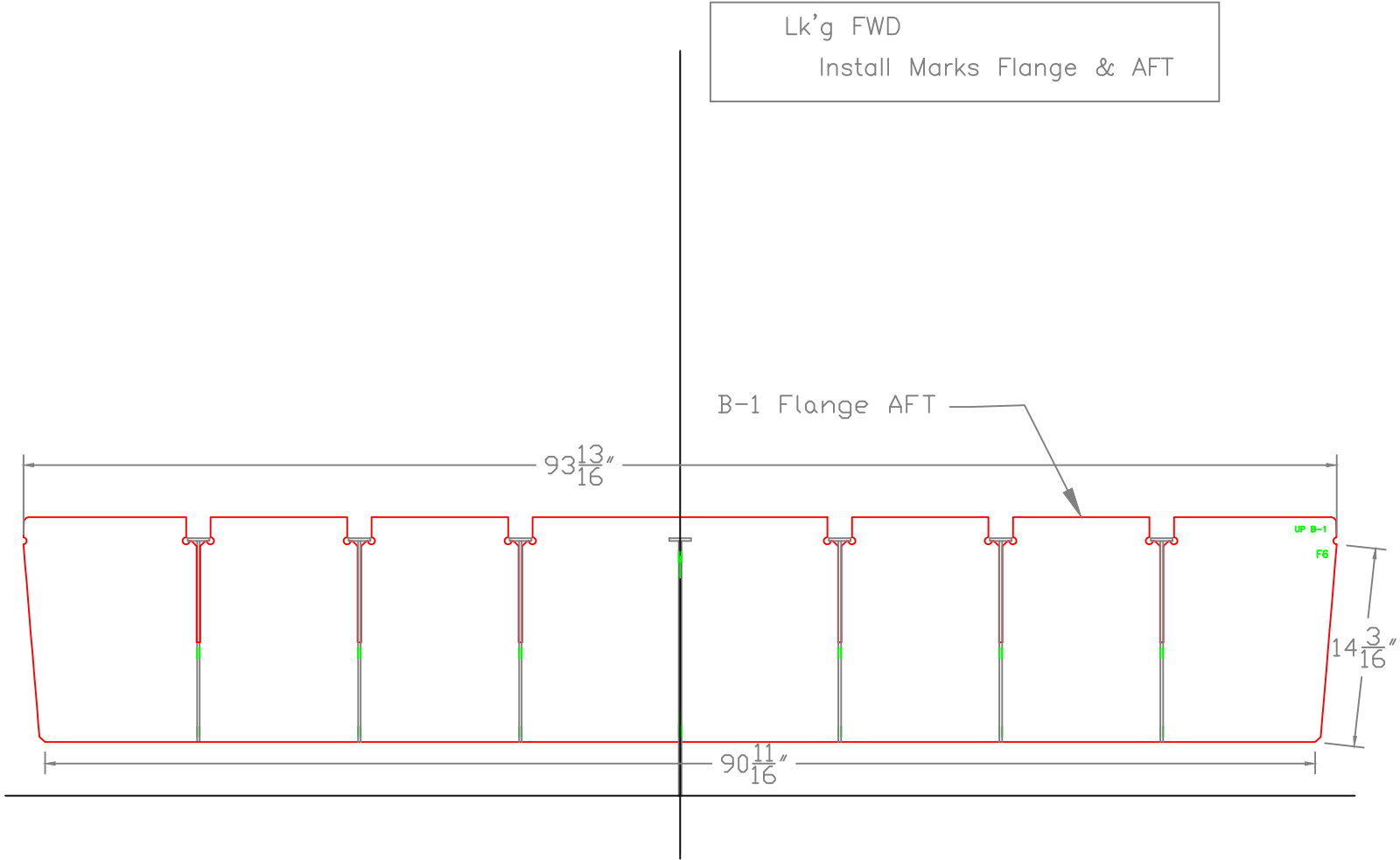
24' LANDING CRAFT
For: Thatchers Island

SCALE 3/4" = 1'	DES/DWN WAL/JCC	DATE 4/21/15
--------------------	--------------------	-----------------

Response Marine, Inc.		SHEET
Newburyport, MA, www.responsemarine.com	DWG NO. 497-F5	

REV.	DESCRIPTION

Lk'g FWD
Install Marks Flange & AFT



F6
WTBHD

24' LANDING CRAFT
For: Thatchers Island

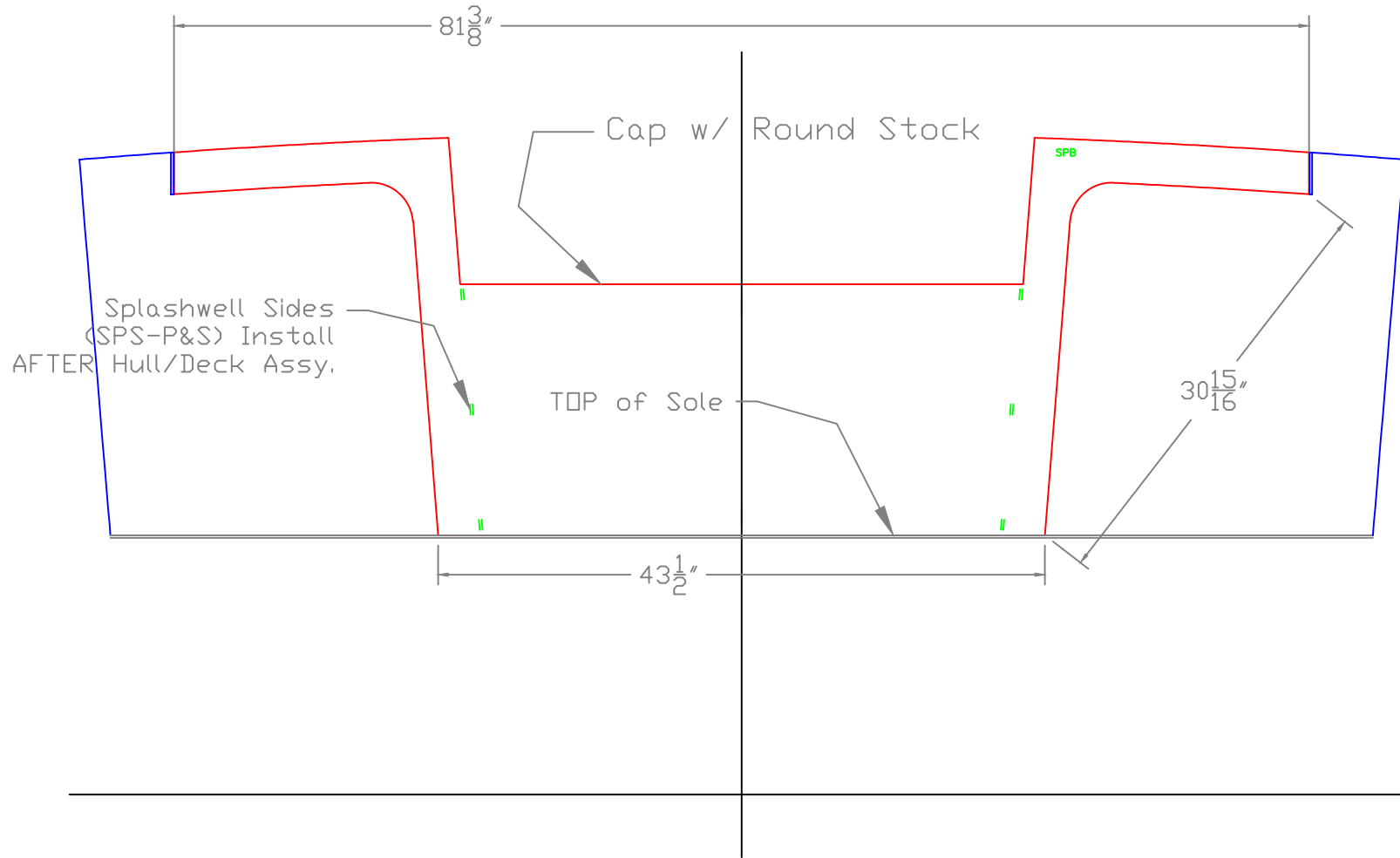
SCALE 1" = 1'	DES/DWN WAL/JCC	DATE 4/21/15
------------------	--------------------	-----------------

Response Marine, Inc.		SHEET
Newburyport, MA, www.responsemarine.com		DWG NO. 497-F6

REV.	DESCRIPTION

Lk'g FWD

Install AFTER Hull & Deck Assy.



SPB

24' LANDING CRAFT
For: Thatchers Island

SCALE 1" = 1'
DES/DWN WAL/JCC
DATE 4/21/15

SHEET

Response Marine, Inc.
Newburyport, MA, www.responsemarine.com
DWG NO. 497-SPB

REV.	DESCRIPTION