

Response Marine, Inc.

NC Cut Parts List: USCGA 36' RV

Print Date: 4/20/20 revised: 1/27/12

Notes: There are no SD Coamings
(4) Jig Parts not listed

3/16" Parts- 5083

<u>Part #</u>	<u>Pieces</u>	<u>Description</u>
TS-AP	1	Topsides, Fwd, Port
TS-BP	1	Topsides, Aft, Port
TS-AS	1	Topsides, Fwd, Stbd
TS-BS	1	Topsides, Aft, Stbd
	4	Total 3/16" 5083 parts

3/16" Parts- 5086

<u>Part #</u>	<u>Pieces</u>	<u>Description</u>
AD-1	2	Aft Deck
ALB-1	1	Anchor Locker Bottom F1-Stem
ALB-2S	1	Anchor Locker Bottom F2-F1, Stbd
ALB-2P	1	Anchor Locker Bottom F2-F1, Port
CF	1	Cuddy Front
CF J-A	1	Cuddy Front Jig, A
CF J-B	1	Cuddy Front Jig, B
CS-P	1	Cuddy/House Side
CS-S	1	Cuddy/House Side
CSJ-1	2	Cuddy side Jig
CT	1	Cuddy Roof, Half
CTW-P	1	Cuddy Trunk Wing
CTW-S	1	Cuddy Trunk Wing
DB	1	Dash Bulkhead
F1	1	Frame 1
F10	1	Frame 10
F2	1	Frame 2
F3	1	Frame 3
F4	1	Frame 4
F5	1	Frame 5
F6	1	Frame 6
F7	1	Frame 7
F8-A	1	Frame 8, Upper
F8-B	1	Frame 8, Lower
F8-C	2	Frame 8, Bulwarks
F9	1	Frame 9
SD-AP	1	Side Deck Fwd, Port
SD-AS	1	Side Deck Fwd, Stbd
SD-BP	1	Side Deck, Mid, Port
SD-BS	1	Side Deck, Mid, Stbd
STEM	1	Stem Plate
MP-AS	1	Margin Plate, Fwd
MP-AP	1	Margin Plate, Fwd
MP-BP	1	Margin Plate, Aft
MP-BS	1	Margin Plate, Aft

PHB-P	1	Pilothouse Back, Port
PHB-S	1	Pilothouse Back, Stbd
PHS-P	1	Pilothouse Side
PHS-S	1	Pilothouse Side
R-P	1	Roof, Port
R-S	1	Roof, Stbd
TJ-A	1	Transom Jig, A
TJ-B	1	Transom Jig,B
TRAN	1	Transom
WSC	1	Windshield, Center
WS-P	1	Windshield, Port
WS-S	1	Windshield, Stbd

50 Total 3/16" 5086 parts

1/4" Parts- 5086

<u>Part #</u>	<u>Pieces</u>	<u>Description</u>
B-AP	1	Bottom Plate, Fwd, Port
B-AS	1	Bottom Plate, Fwd, Stbd
B-BP	1	Bottom Plate, Aft, Port
B-BS	1	Bottom Plate, Aft, Stbd
EVL-1	8	Engine Vent Louvre, Short
EVL-2	8	Engine Vent Louvre, Med.
EVL-3	4	Engine Vent Louvre, Long
F-61P	1	Intermediate Frame
F-61S	1	Intermediate Frame
F-62AP	1	Intermediate Frame
F-62AS	1	Intermediate Frame
F-62BP	1	Intermediate Frame
F-62BS	1	Intermediate Frame
F-63P	1	Intermediate Frame
F-63S	1	Intermediate Frame
F-71P	1	Intermediate Frame
F-71S	1	Intermediate Frame
F-72AP	1	Intermediate Frame
F-72AS	1	Intermediate Frame
F-72BP	1	Intermediate Frame
F-72BS	1	Intermediate Frame
F-73P	1	Intermediate Frame
F-73S	1	Intermediate Frame
F-81AP	1	Intermediate Frame
F-81AS	1	Intermediate Frame
F-81BP	1	Intermediate Frame
F-81BS	1	Intermediate Frame
F-91P	1	Intermediate Frame
F-91S	1	Intermediate Frame
F2-P	1	Inspection Plate, F2
F2-R	1	Doubler Ring, F2
F6DBS3	2	F6 Doubler, Front Side at BS3
F6DIBP	1	F6 doubler at eng bed, IB, Port
F6DIBS	1	F6 doubler at eng bed, IB, Stbd
F6DOBP	1	F6 doubler at eng bed, OB, Port
F6DOBS	1	F6 doubler at eng bed, OB, Stbd
SLD-P	1	Shaft Log Doubler, Port
SLD-S	1	Shaft Log Doubler, Stbd
T-B	1	Fuel Tank Body

T-BL	1	Fuel Tank Baffle, Longl
T-BT	1	Fuel Tank Baffle, Transverse
T-E	2	Fuel Tank Ends
TSL-1BP	1	Topside Stringer 1, Tran-F6, Port
TSL-1BS	1	Topside Stringer 1, Tran-F6, Stbd
TSL-2P	1	Topside Stringer 2, F4-Stem, Port
TSL-2S	1	Topside Stringer 2, F4-Stem, Stbd
TSL-3P	1	Topside Stringer 3, Stem-F6, Port
TSL-3S	1	Topside Stringer 3, Stem-F6, Stbd
TSS-1AP	1	Topside Stringer 1, F6-Stem, Port
TSS-1AS	1	Topside Stringer 1, F6-Stem, Stbd
T-TP	1	Fuel Tank Top, Port
T-TS	1	Fuel Tank Top, Stbd

71 Total 1/4" parts

5/16" Parts, 5083

<u>Part #</u>	<u>Pieces</u>	<u>Description</u>
BS-1AP	1	Bottom Stringer 1, F7-Stem, Port
BS-1AS	1	Bottom Stringer 1, F7-Stem, Stbd
BS-1BP	1	Bottom Stringer 1, Tran-F7, Port
BS-1BS	1	Bottom Stringer 1, Tran-F7, Stbd
BS-2P	1	Bottom Stringer 2, F6-Stem, Port
BS-2S	1	Bottom Stringer 2, F6-Stem, Stbd
BS-3AP	1	Bottom Stringer 3, F4-F2, Port
BS-3AS	1	Bottom Stringer 3, F4-F2, Stbd
BS-3BP	1	Bottom Stringer 3, F4-F10, Port
BS-3BS	1	Bottom Stringer 3, F4-F10, Stbd
BS-4P	1	Bottom Stringer 4, F6-F3, Port
BS-4S	1	Bottom Stringer 4, F6-F3, Stbd
BS-5AP	1	Bottom Stringer 5, F8-F4, Port
BS-5AS	1	Bottom Stringer 5, F8-F4, Stbd
BS-5BP	1	Bottom Stringer 5, T-F8, Port
BS-5BS	1	Bottom Stringer 5, T-F8<Stbd

16 Total 5/16" parts

3/8" Parts- 5086

<u>Part #</u>	<u>Pieces</u>	<u>Description</u>
BR-1	2	Bow Roller
C-AP	1	Chine, fwd, Port
C-AS	1	Chine, fwd, Stbd
C-BP	1	Chine, mid, Port
C-BS	1	Chine, mid, Stbd
C-CP	1	Chine, aft, Port
C-CS	1	Chine, aft, Stbd
EBI-AP	1	Engine Bed Web Inboard, Port
EBI-AS	1	Engine Bed Web Inboard, Stbd
EBI-BP	1	Engine Bed Flange Inboard, Port
EBI-BS	1	Engine Bed Flange Inboard, Stbd
EBI-CP	1	Engine Bed Flange Inboard, Port
EBI-CS	1	Engine Bed Flange Inboard, Stbd
EBI-DP	1	Engine Bed Flange Inboard, Port
EBI-DS	1	Engine Bed Flange Inboard, Stbd

EBI-EP	1	Engine Bed Flange Inboard, Port
EBI-ES	1	Engine Bed Flange Inboard, Stbd
EBI-FP	1	Engine Bed Flange Inboard, Port
EBI-FS	1	Engine Bed Flange Inboard, Stbd
EBI-GP	1	Engine Bed Web Inboard, Port
EBI-GS	1	Engine Bed Web Inboard, Stbd
EBO-AP	1	Engine Bed Web Outboard, Port
EBO-AS	1	Engine Bed Web Outboard, Stbd
EBO-BP	1	Engine Bed Flange Outboard, Port
EBO-BS	1	Engine Bed Flange Outboard, Stbd
EBO-CP	1	Engine Bed Flange Outboard, Port
EBO-CS	1	Engine Bed Flange Outboard, Stbd
EBO-DP	1	Engine Bed Flange Outboard, Port
EBO-DS	1	Engine Bed Flange Outboard, Stbd
EBO-EP	1	Engine Bed Flange Outboard, Port
EBO-ES	1	Engine Bed Flange Outboard, Stbd
EBO-FP	1	Engine Bed Flange Outboard, Port
EBO-FS	1	Engine Bed Flange Outboard, Stbd
EBO-GP	1	Engine Bed Flange Outboard, Port
EBO-GS	1	Engine Bed Flange Outboard, Stbd

36 Total 3/8" parts

3/4" Parts- 5086

<u>Part #</u>	<u>Pieces</u>	<u>Description</u>
BIP	2	Bottom Insert Plates
K-A	1	Deck CL Return to F2
K-B	1	Stem
K-C	1	Keel Fwd
K-D	1	Keel Mid
K-E	1	Keel Aft

7 Total 3/4" Parts

184 Total Cut Parts

Response Marine, Inc.- for Vikng Welding
 #379- 36' USCGA Marine Science Vessel

1/27/12

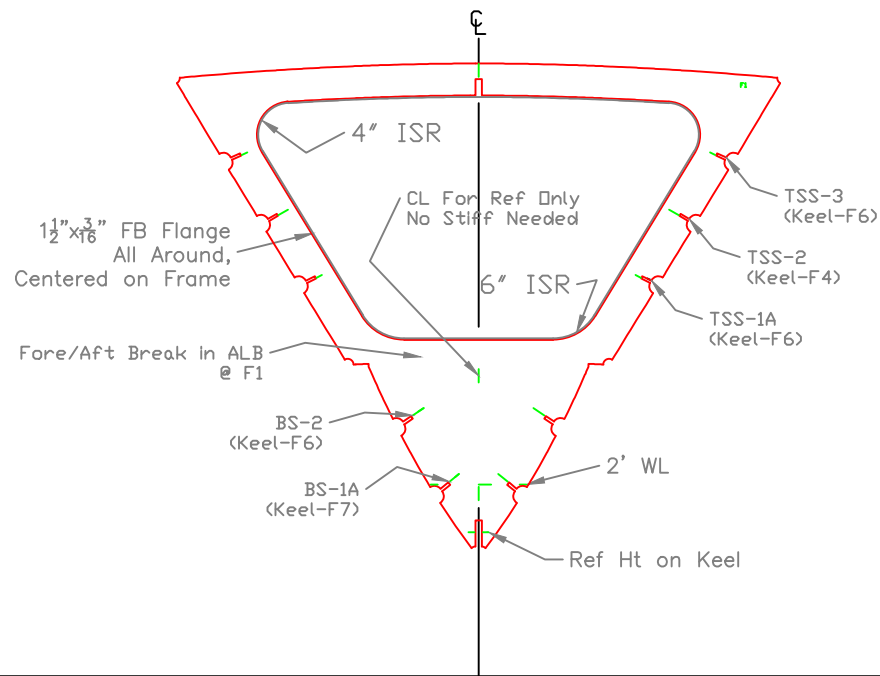
Extrusion Stock

EXTRUSION (All 6061 T6, unless noted)

<u>QTY</u>	<u>Item</u>	<u>Dims</u>	<u>Thick</u>	<u>Lngh</u>	<u>Alloy</u>	<u>lbs/ft</u>	<u>lbs</u>
12	Struct. Tee	1.5 x 1.5	0.250	25		0.87	261
3	Angle	1.5x1.5	0.190	25		0.62	47
2	Angle	3x2	0.250	25		1.40	70
1	Angle	2x2	0.190	25		0.85	21
10	Angle	.75x.75	0.125	16	6063	0.20	32
6	Chan	2x1	0.125	25		0.58	87
1	Chan	5x2.75		25		3.09	77
2	Chan, AA	8x3		25		4.15	208
5	Chan	2x2	0.250	16	6063	1.63	131
2	Flat Bar	1.5	0.190	12		0.33	8
10	Flat Bar	2	0.190	12		0.44	53
10	Flat Bar	3	0.250	12		0.89	106
9	Sq. Tubing	1.5	0.125	24		0.81	175
3	Sq. Tubing	1.5	0.190	24		1.14	82
1	Sq. Tubing	2	0.190	24		1.60	38
1	Pipe	1.5	Sch 40	20		0.94	19
1	Pipe	2.5	Sch 40	20		2.00	40

Frame 1

Marks AFT

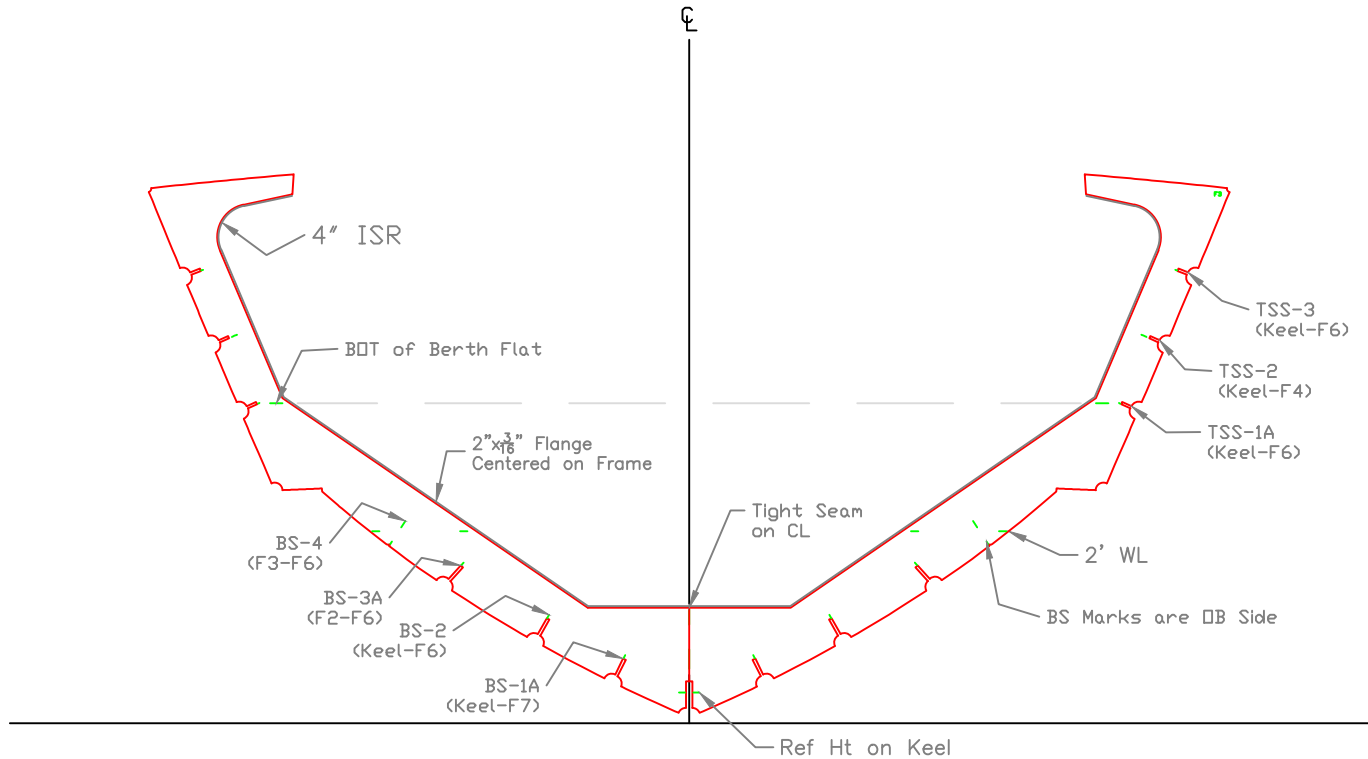


Looking Fwd
Marks on AFT Side of Frame

FRAME 1						
11m R/V- USCG ALUMNI ASSOCIATION						
SCALE 1/2"=1'	DES/DWN WAL/JCC	DATE 02/17/12				
<table border="1"> <thead> <tr> <th>REV.</th> <th>DESCRIPTION</th> </tr> </thead> <tbody> <tr> <td> </td> <td> </td> </tr> </tbody> </table>		REV.	DESCRIPTION			SHEET DWG NO. 379-F-1
REV.	DESCRIPTION					
Response Marine, Inc. Newburyport, MA www.responsemarine.com						

Frame 3

Marks AFT

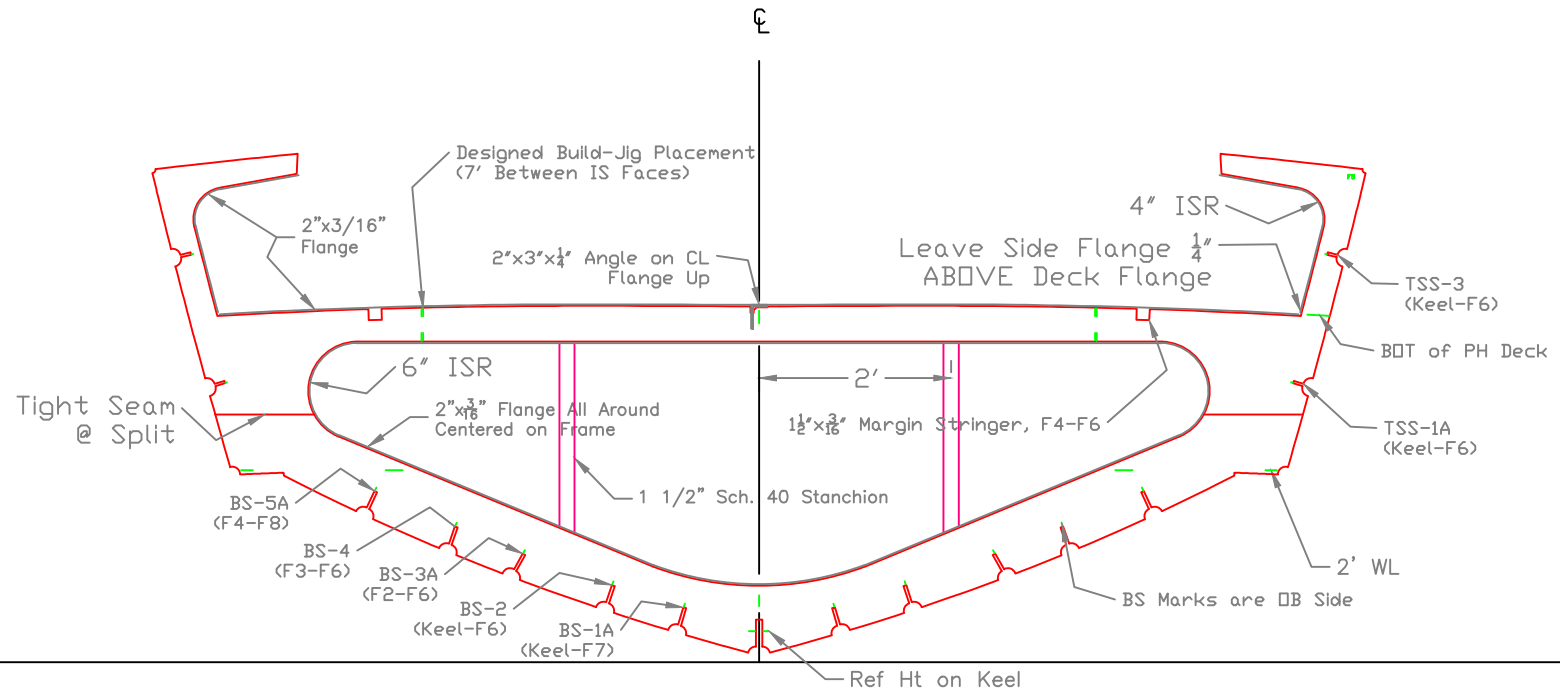


Looking Fwd
Marks on AFT Side of Frame

FRAME 3		
11m R/V- USCG ALUMNI ASSOCIATION		
SCALE 1/2"=1'	DES/DWN WAL/JCC	DATE 02/17/12
REV.		SHEET
DESCRIPTION		DWG NO. 379-F-3
Response Marine, Inc. Newburyport, MA, www.responsemarine.com		

Frame 5

Marks AFT



Looking Fwd
Marks on AFT Side of Frame

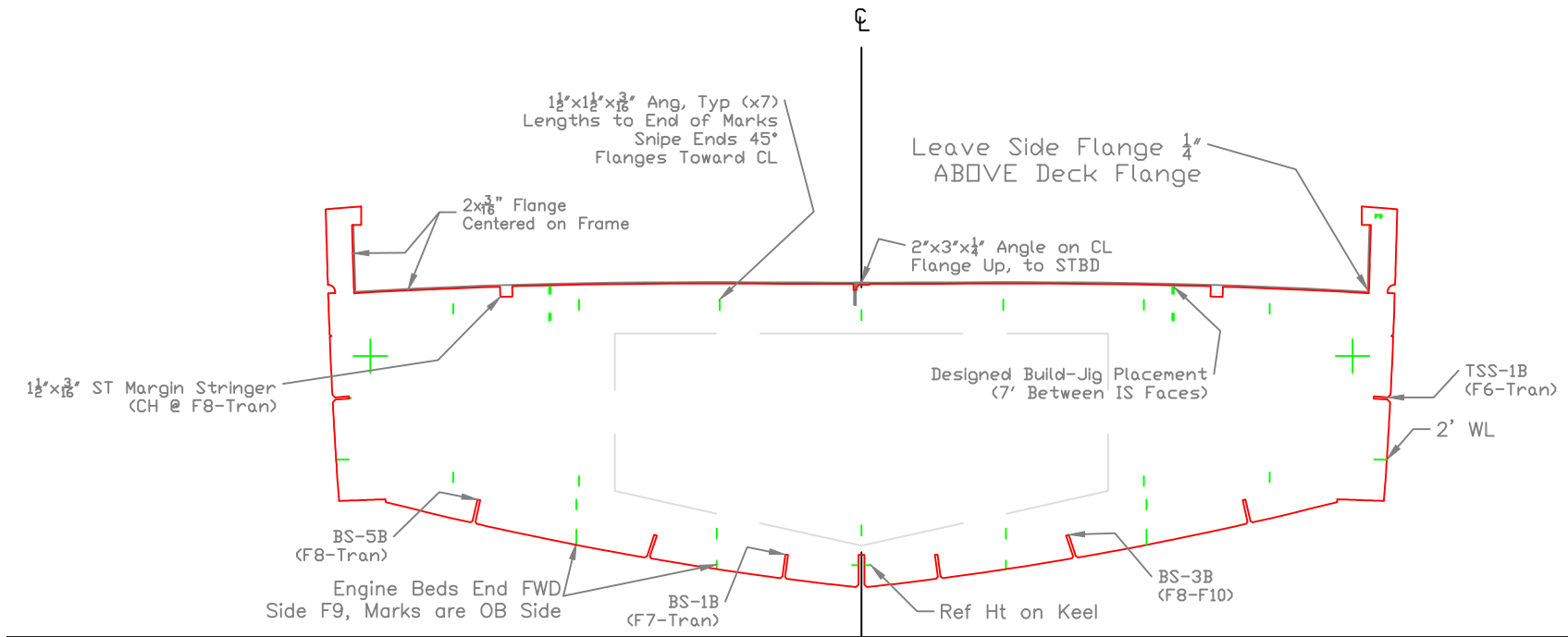
FRAME 5		
11m R/V- USCG ALUMNI ASSOCIATION		
SCALE 1/2"=1'	DES/DWN WAL/JCC	DATE 02/17/12
Response Marine, Inc. Newburyport, MA www.responsemarine.com		SHEET DWG NO. 379-F-5

REV.	DESCRIPTION

Frame 9

WTBHD

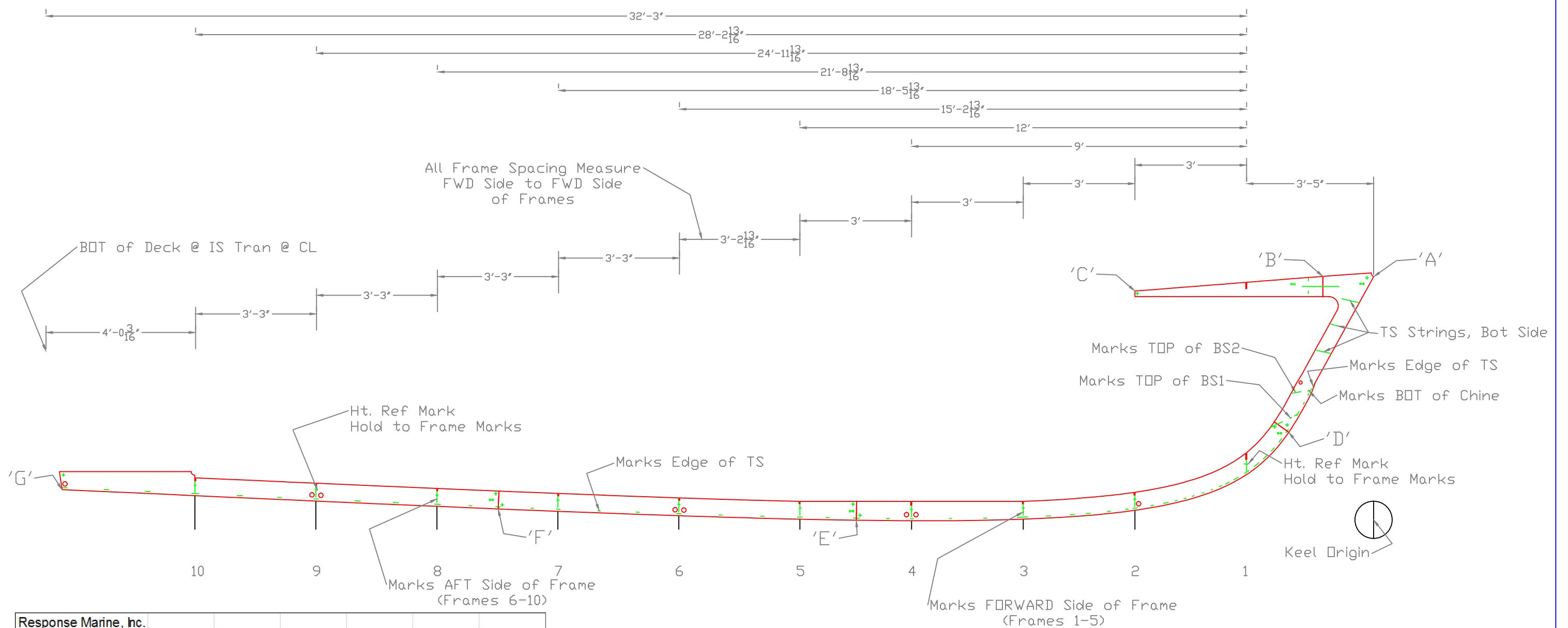
Marks & Stiffs AFT



Looking Fwd
Stiffeners on AFT Side of Frame

FRAME 9, WTBHD		
11m R/V- USCG ALUMNI ASSOCIATION		
SCALE 1/2"=1'	DES/DWN WAL/JCC	DATE 02/17/12
Response Marine, Inc.		SHEET
Newburyport, MA www.responsemarine.com		DWG NO. 379-F-9

REV.	DESCRIPTION



Response Marine, Inc.
USCGAA 3/29/12
Keel Points

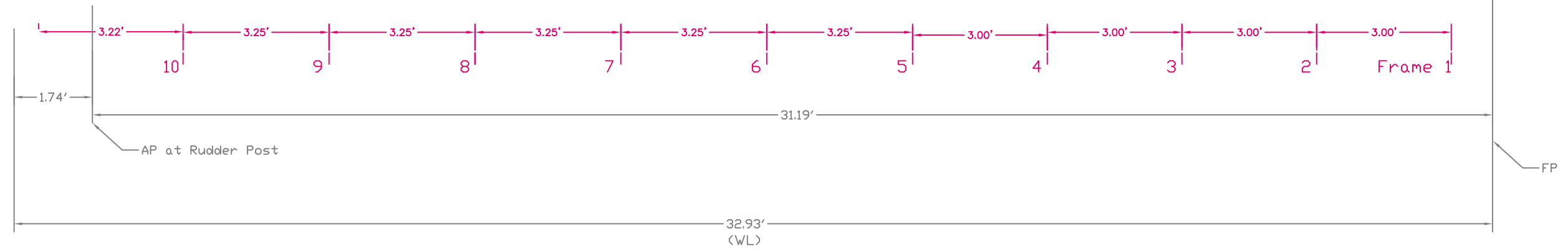
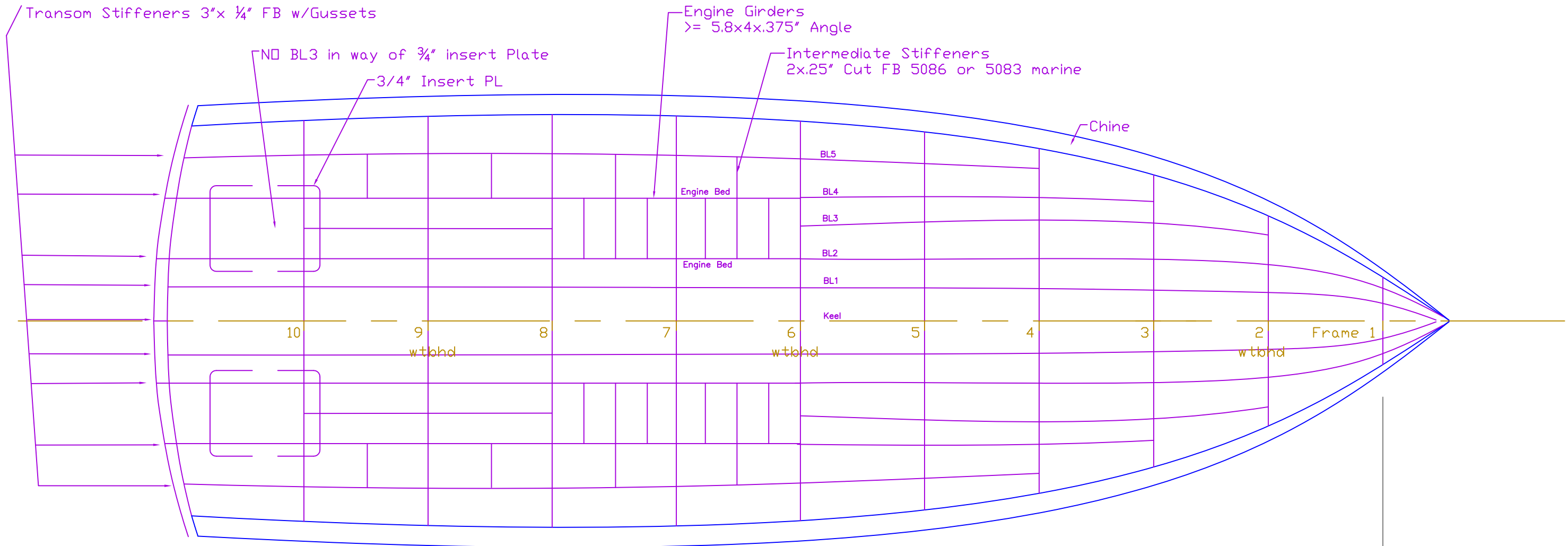
	Inches- sixteenths		Feet	
	Horizontal	Vertical	Horizontal	Vertical
A to Origin				
B to Origin				
C to Origin				
D to Origin				
E to Origin	16			
F to Origin	28			
G to Origin	42			
H to Origin				
I to Origin				

	ALIGNED (INCHES)						
	A	B	C	D	E	F	G
A to							
B to							
C to							
D to							
E to							
F to							
G to							

KEEL LAYOUT		
11m R/V- USCG ALUMNI ASSOCIATION		
SCALE 3/8" = 1'	DES/DWN WAL/JCC	DATE 03/29/12
Response Marine, Inc. Newburyport, MA, www.responsemarine.com		Rev 379-2-1A

DATE

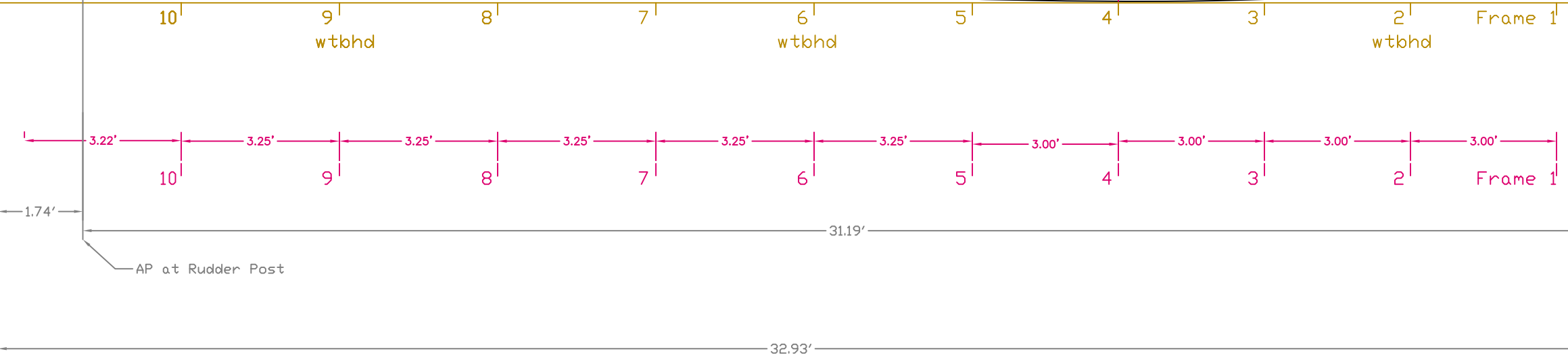
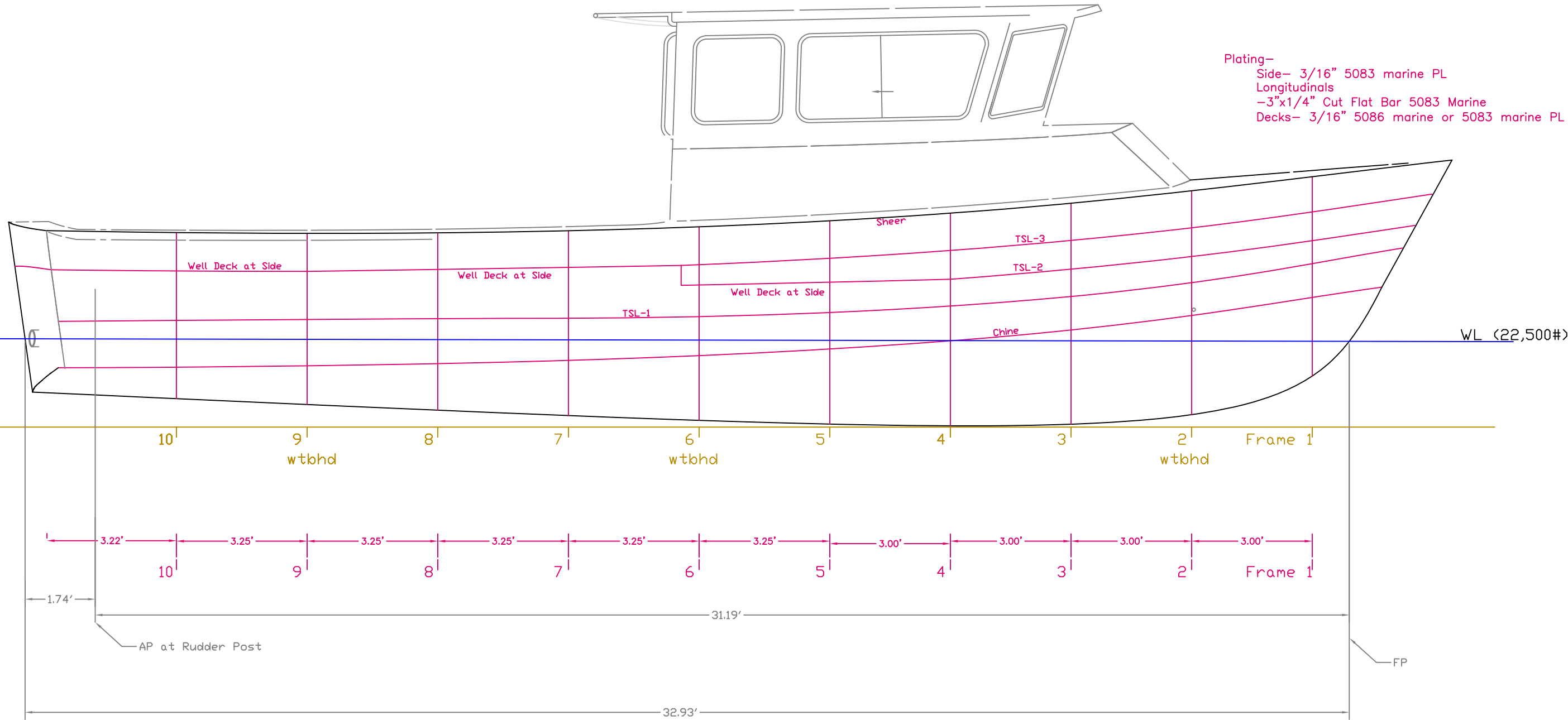
Plating—
 Chine— 3/8" 5086 marine PL
 Bottom— 1/4" 5083 marine PL
 Longitudinals— 3 3/4" X 5/16" Cut Flat Bar 5083 marine PL
 Engine Girders— 3/8" 5086 marine PL
 Keelson— 5 3/4" x 3/4" 5086 marine PL
 Transverse Frames— 7" X 3/16" 5086 marine or 5083 marine PL
 w/ 2" x 3/16" Flange 6061 T6



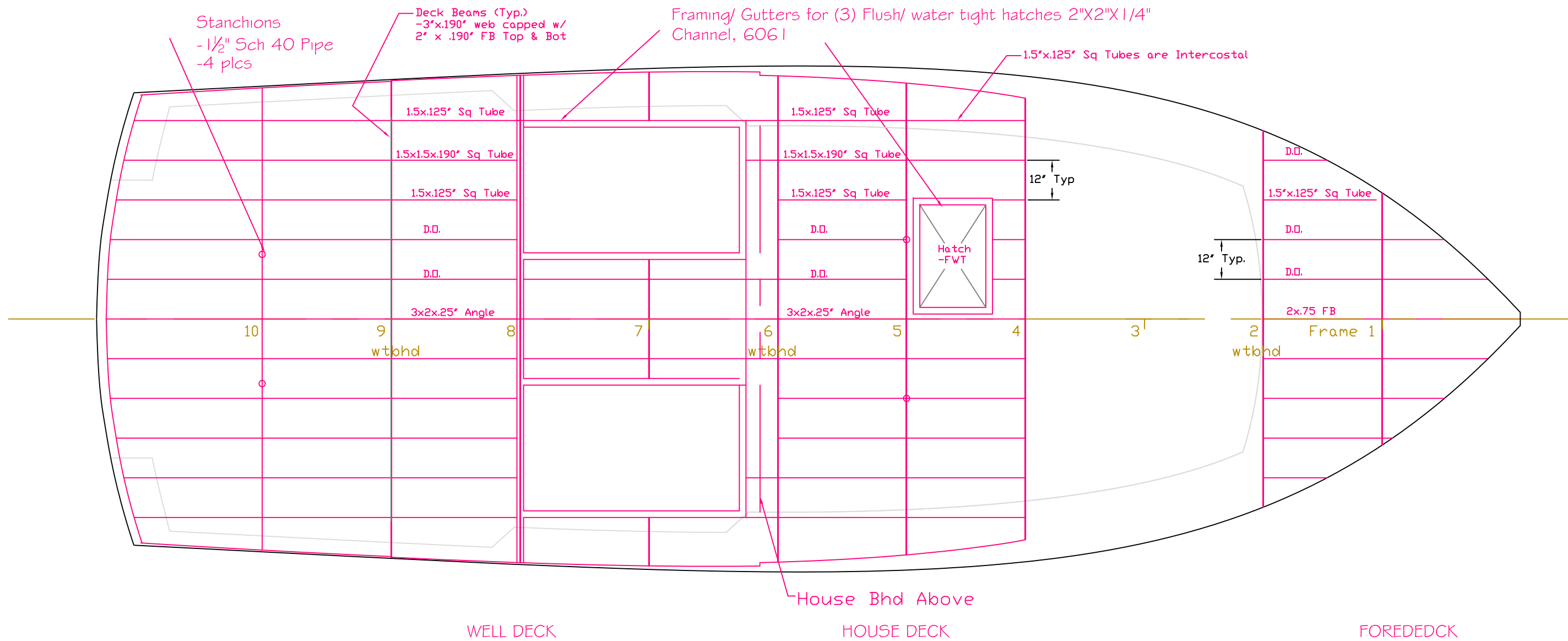
BOTTOM STRUCTURE		
11m R/V- USCG ALUMNI ASSOCIATION		
SCALE 3/8" = 1'	DES/DWN WAL/ARK	DATE 1/17/05
Response Marine, Inc.		REV 12/19/11
Newburyport, MA, www.responsemarine.com		DWG. NO. 379-2-1, R1

REV.	DESCRIPTION
R1, 12/19/11	Changed Alloy & Stringers

Plating—
 Side— 3/16" 5083 marine PL
 Longitudinals
 -3"x1/4" Cut Flat Bar 5083 Marine
 Decks— 3/16" 5086 marine or 5083 marine PL



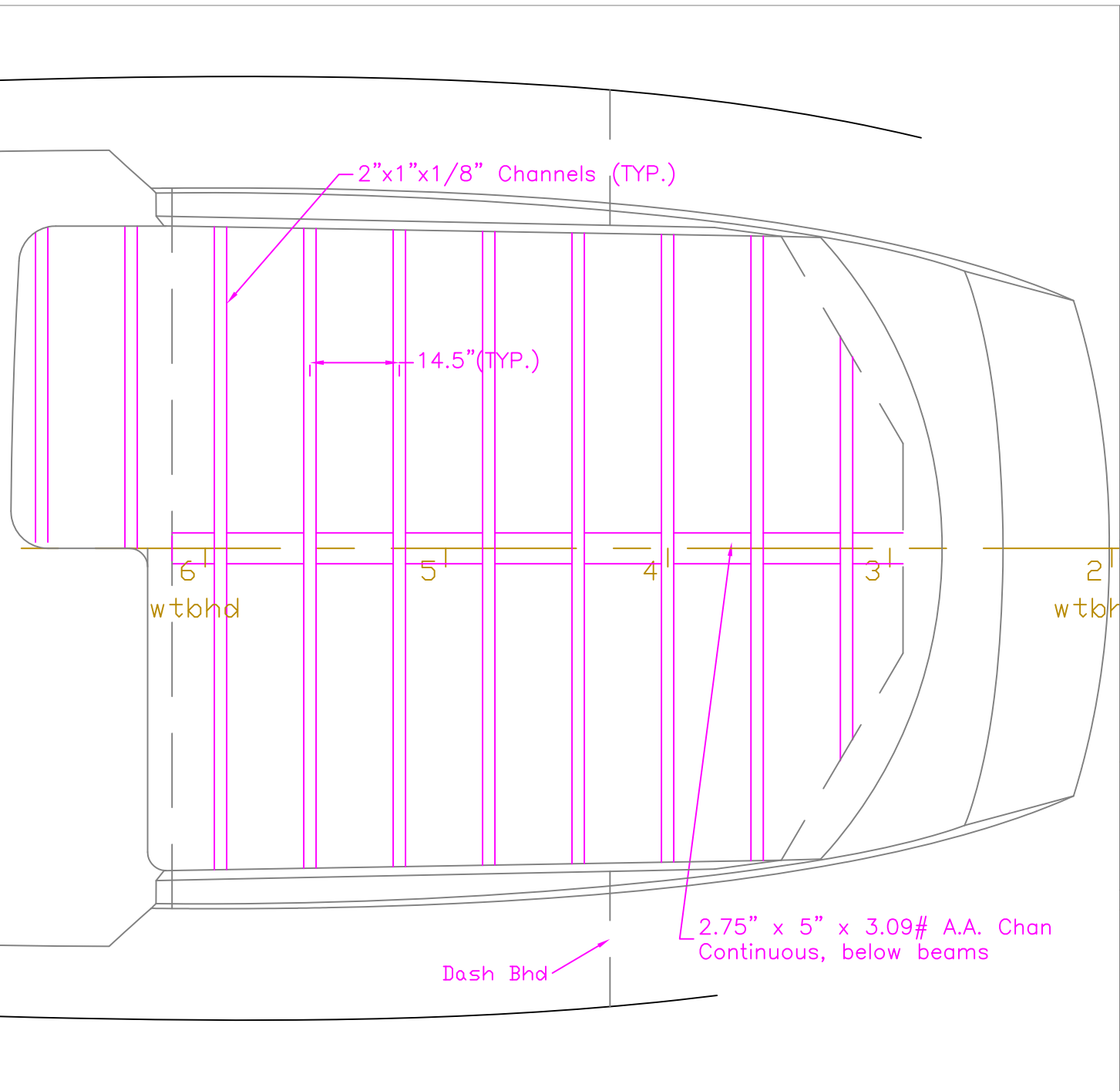
SIDE STRUCTURE		
11m R/V- USCG ALUMNI ASSOCIATION		
SCALE 3/8" = 1'	DES/DWN WAL/ARK	DATE 1/17/05
Response Marine, Inc. Newburyport, MA, www.responsemarine.com		Rev 12/19/11
R1, 12/19/11 Added TSL 2 & Dlms		DWG NO. 379-2-2, R1



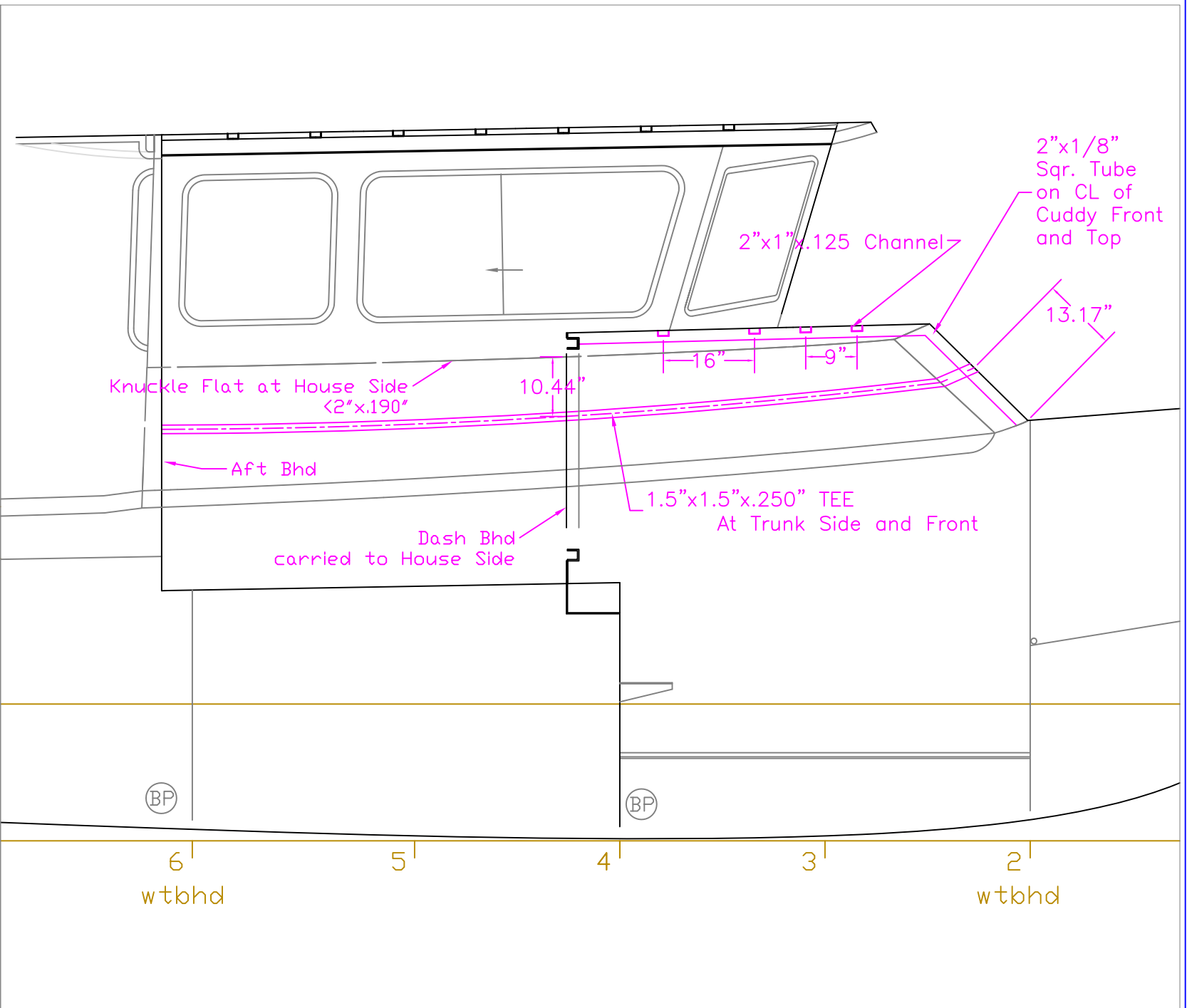
All Deck Plating- 3/16" 5086 marine or 5083 marine

DATE
R1, 12/19/11 Changed Stringers

DECK STRUCTURE		
11m R/V- USCG ALUMNI ASSOCIATION		
SCALE 3/8" = 1'	DES/DWN WAL/ARK	DATE 1/17/05
Response Marine, Inc.		Rev 12/19/11
Newburyport, MA, www.responsemarine.com		DWG NO. 379-2-3, R1



ROOF PLAN



PROFILE

Trunk Cabin & House Plating
 - All .190 5086-H116 marine
 - 5083-H116 marine may be substituted.

R1, 12/19/11, Revised Structure

CABIN STRUCTURE		
11m R/V- USCG ALUMNI ASSOCIATION		
SCALE 1/2" = 1'	DES/DWN WAL/ARK	DATE 1/17/05
Response Marine, Inc. Newburyport, MA, www.responsemarine.com		Rev 12/19/11
		DWG NO. 379-4-1, R1