

Response Marine, Inc.
Design #631

Chester 32x12 FBLC

Drawing List (in page order of pdf file)

8/6/22

<u>DWG #</u>	<u>Title</u>	<u>Date</u>
631 -1	Outboard Views	8/6/22
-2	Inboard Views	8/6/22
-3	End Views	8/6/22
-2-1	Girders- BS-3P/S	7/13/22
-2-2	Girder Cutout Flange Dims	7/13/22
-2-3	Bottom Stringers 1 & 2	7/13/22
-2-4	Bottom Stringers 4 & 5	7/13/22
-2-5	Bottom Plate Layout	7/13/22
-2-6	Topsides Plate Layout	7/13/22
-2-7	Sheer Widths	7/13/22
-2-8	Bow	7/13/22
-2-9	Transom	7/13/22
-2-10	False Transom	7/13/22
-2-11	Side Deck Layout	7/13/22
-2-12	Cockpit Deck	7/13/22
-2-13	House & Engine Decks	7/13/22
-2-14	Bow Locker Coaming	7/13/22
-2-15	Dive Door- TS Plate Marks	7/13/22
-2-16	Dive Door- Parts #1	7/13/22
-2-17	Dive Door- Parts #2	7/13/22
-2-18	Bow Door Profile	7/13/22
-2-19	Bow Door Plate	7/13/22
-2-20	Bow Door Stiffs/Hinges	7/13/22
-3-1	Fuel Tank, 216 gal, gross	7/13/22
4-1	House- Front (Stbd)	8/4/22
4-2	House- Front (Port)	8/4/22
4-3	House- Aft BHD	8/4/22
4-4	House- Sides	8/4/22
4-5	House Roof- Skin	8/4/22
4-6	House Roof- Beams & Jig	8/4/22
4-7	House Roof- Visors	8/4/22
-7-1	Window Set- 8 Windows	8/4/22
-7-2	Doors	8/4/22
-FR-1	Typical Frame Details	7/13/22
-FR-2	Frame Cutout Flange Dims	7/13/22
-F-1	Frame 1	7/13/22
-F-2	Frame 2	7/13/22
-F-3	Frame 3, WTBHD	7/13/22
-F3D	Frame 3, Dimensions	7/13/22
-F-4	Frame 4	7/13/22
-F-5	Frame 5	7/13/22
-F-6	Frame 6	7/13/22
-F-7	Frame 7	7/13/22
-F-8	Frame 8, WTBHD	7/13/22
-F-9	Frame 9	7/13/22

Response Marine, Inc.

NC PARTS LIST

Boat: 631- 32x12 FBLC
File: RMI\designs\Chester\631 ...\
revised: 8/6/22

Print Date: 8/8/2022

3/16" 5052 Parts

<u>Part #</u>	<u>Pieces</u>	<u>Description</u>	<u>Forming</u>
DD-DC	1	Dive Door Door Bottom	90 deg., R 1/4", AWAY
PH-BHD-P	1	Pilothouse Aft Bhd, Port	
PH-BHD-S	1	Pilothouse Aft Bhd, Stbd	
PH-F	1	Pilothouse Front	15 deg., R 1/4", AWAY
PHR-J	4	Pilothouse Roof- Jig	
PHR-P	1	Pilothouse Roof, Port	
PHR-S	1	Pilothouse Roof, Stbd	
PHR-VAP	1	Pilothouse Visor, Front, Port	Bump 2 deg on marks & halfway btwn marks
PHR-VAS	1	Pilothouse Visor, Front, Stbd	
PHR-VB	1	Pilothouse Visor, Aft	
PHR-VP	1	Pilothouse Visor, Side, Port	
PHR-VS	1	Pilothouse Visor, Side, Stbd	
PHS-P	1	Pilothouse House Side, Port	
PHS-PD1	1	Pilothouse Side, Port side of Helm	90 deg., R 1/4", AWAY
PHS-PD2	1	Pilothouse House Side/Front, Port Fwd Door	
PHS-S	1	Pilothouse House Side, Stbd	
PH-VF-0	1	Pilothouse Visor Frame, Fwd CL	
PH-VF-P	1	Pilothouse Visor Frame, Fwd, Port	
PH-VF-S	1	Pilothouse Visor Frame Fwd, Stbd	
T-A	1	Fuel Tank Body	(4) R 1/4"
T-BL	1	Fuel Tank Longitudinal Baffle	
T-BT	2	Fuel Tank Transverse Baffle	
T-C	2	Fuel Tank Ends	
T-D	1	Fuel Tank Top	
VF	8	Pilothouse Visor Side Frames	
	37	Sub Total 3/16" 5052 Parts	

3/16" 5083/86 Parts

<u>Part #</u>	<u>Pieces</u>	<u>Description</u>	<u>Forming</u>
BDR-1	1	Bow Door Roller Housing, Inboard Side	
BDR-2	1	Bow Door Roller Housing, Outboard Side	
BDR-3	1	Bow Door Roller Housing, Cap (Trim to suit)	
BOW-DC	1	Bow- Cockpit Deck Coaming	
BOW-SN2	2	Bow Snipe at Doorway Top, Fore/Aft	
DB-AP	1	Deck Body, Stem-F3, Port	
DB-AS	1	Deck Body, Stem-F3, Stbd	
DB-BP	1	Deck Body, F3 to House Front, Port	
DB-BS	1	Deck Body, F3 to House Front, Stbd	
DB-CP	1	Deck Body, House Front to Transom, Port	
DB-CS	1	Deck Body, House Front to Transom, Stbd	
DB-DP	1	Deck Body, Engine Deck, FTran to Transom, Port	
DB-DS	1	Deck Body, Engine Deck, FTran to Transom, Stbd	
DD-DFA	1	Dive Door Door Frame, Fwd	
DD-DFB	1	Dive Door Door Frame, Aft	
DD-HF	1	Dive Door Hull Frame, Aft	
DD-HTH	1	Dive Door Hull Threshold, Horizontal, F3-F4	
DD-HTV	1	Dive Door Hull Threshold, Vertical, F3-F4	
DM-AP	1	Deck Margin, Stem-F2, Port	
DM-AS	1	Deck Margin, Stem-F2, Stbd	
DM-BP	1	Deck Margin, F2-F7, Port	
DM-BS	1	Deck Margin, F2-F6, Stbd	
DM-CP	1	Deck Margin (F6 to FTran), Port	
DM-CS	1	Deck Margin (F5 to FTran), Stbd	
F1	1	Frame 1	
F2	1	Frame 2	
F2-P	1	Frame 2, Topside, Port	
F2-S	1	Frame 2, Topside, Stbd	
F3	1	Frame 3	
F4	1	Frame 4	
F4-P	1	Frame 4, Topside, Port	
F4-S	1	Frame 4, Topside, Stbd	
F5	1	Frame 5	
F5-P	1	Frame 5, Topside, Port	
F5-S	1	Frame 5, Topside, Stbd	
F6	1	Frame 6	
F6-P	1	Frame 6, Topside, Port	

F6-S	1	Frame 6, Topside, Stbd	
F7	1	Frame 7	
F8	1	Frame 8, Topside, Port	
F8-P	1	Frame 8, Topside, Port	
F8-S	1	Frame 8, Topside, Stbd	
F9	1	Frame 9 (below deck only)	
FTR-P	1	False Transom, Port	UP 10, R 1/4"
FTR-S	1	False Transom, Stbd	UP 10, R 1/4"
PHR-BA1	1	Pilothouse Roof- Beam #1	
PHR-BA2	1	Pilothouse Roof- Beam #2	
PHR-BB	1	Pilothouse Roof- Beam #3	
PHR-BC	4	Pilothouse Roof- Beam #4 thru #7	
SD-AP	1	Side Deck, Fwd, Port	
SD-AS	1	Side Deck, Fwd, Stbd	
SD-BP	1	Side Deck, Aft, Port	
SD-BS	1	Side Deck, Aft, Stbd	
SDC-AP	1	Side Deck Coaming, Fwd, Port Jog	
SDC-AS	1	Side Deck Coaming, Fwd, Stbd Jog	
SDC-BP	1	Side Deck Coaming, Mid, Port (end aft of F5)	
SDC-BS	1	Side Deck Coaming, Mid, Stbd (aft end at House Front)	
SDC-CP	1	Side Deck Coaming, Mid, Port (aft end aft of House Front)	
SDC-DP	1	Side Deck Coaming, Aft, Port (House aft BHD to FTran)	
TDC-P	1	Transom Deck Coaming- Port	
TDC-S	1	Transom Deck Coaming- Stbd	
TD-P	1	Transom Deck, Port	
TD-S	1	Transom Deck, Stbd	
TS-AP	1	Topsides, Fwd, Port	
TS-AS	1	Topsides, Fwd, Stbd	
TS-BP	1	Topsides, Aft, Port	
TS-BS	1	Topsides, Aft, Stbd	
	71	Sub Total 3/16" 5086 Parts	

1/4" 5083/86 Parts

<u>Part #</u>	<u>Pieces</u>	<u>Description</u>	<u>Forming</u>
BDP	1	Bow Door Plate	
BDS	5	Bow Door Stiffeners	
BDS	7	Bow Door Stiffener, Doubler Discs at Hinge Point	
BDS-P	1	Bow Door Stiffener, Port End	
BDS-S	1	Bow Door Stiffener, Stbd End	

BOT-AP	1	Bottom Plate, Fwd, Port	
BOT-AS	1	Bottom Plate, Fwd, Stbd	
BOT-BP	1	Bottom Plate, Aft, Port	
BOT-BS	1	Bottom Plate, Aft, Stbd	
BOW	1	Bow Plate	
BOW-SN1	2	Bow Snipe at Doorway Top, Transverse	
BS-1A	2	Bottom Longitudinal 1, Fwd, Stem to F8	
BS-1B	2	Bottom Longitudinal 1, Aft, F8 to Tran	
BS-2AP	1	Bottom Longitudinal 1, Fwd, Stem to F3, Port	
BS-2AS	1	Bottom Longitudinal 1, Fwd, Stem to F3, Stbd	
BS-2BP	1	Bottom Longitudinal 1, Aft, F3 to Tran, Port	
BS-2BS	1	Bottom Longitudinal 1, Aft, F3 to Tran, Stbd	
BS-3AP	1	Bottom Longitudinal 3, GIRDER, Fwd, Port, Stem to F8	
BS-3AS	1	Bottom Longitudinal 3, GIRDER, Fwd, Stbd, Stem to F8	
BS-3BP	1	Bottom Longitudinal 3, GIRDER, Aft, Port, F8 to Tran	
BS-3BS	1	Bottom Longitudinal 3, GIRDER, Aft, Stbd, F8 to Tran	
BS-4A	2	Bottom Longitudinal 4, Fwd, Stem to F3	
BS-4B	2	Bottom Longitudinal 4, Aft, F3 to Tran	
BS-5A	2	Bottom Longitudinal 5, Fwd, Stem to F8	
BS-5B	2	Bottom Longitudinal 5, Aft, F8 to Tran	
BSC-4/5	2	Bot Stringer Cap btwn BS-4 & 5 at Stem (landing for deck tube)	
FDC-P	1	Foredeck Compartment Coaming, Port	
FDC-S	1	Foredeck Compartment Coaming, Stbd	
TSC-P	1	Topsides Coaming at Engine Well, Port	Bump 2 degree increments
TSC-S	1	Topsides Coaming at Engine Well, Stbd	Bump 2 degree increments
TSL-1AP	1	Topsides Stringer #1, F1-F8, Port	
TSL-1AS	1	Topsides Stringer #1, F1-F8, Stbd	
TSL-1BP	1	Topsides Stringer #1, F8-Transom, Port	
TSL-1BS	1	Topsides Stringer #1, F8-Transom, Stbd	
TSL-2AP	1	Topsides Stringer #2, Stem-F2, Port	
TSL-2AS	1	Topsides Stringer #2, Stem-F3, Stbd	
TSL-2BP	1	Topsides Stringer #2, Aft side of Dive Door to Transom, Port	
TSL-2BS	1	Topsides Stringer #2, F3-Transom, Stbd	
TSL-2DDP	1	Topsides Stringer #2, Dive Door, Port	

57 Sub Total 1/4" 5086 Parts

3/8" 5086 Parts

<u>Part #</u>	<u>Pieces</u>	<u>Description</u>
BDH	14	Bow Door Hinge Eyes, at Bow
DD-H1	2	Dive Door Hinge- Door
DD-H2	2	Dive Door Hinge- Hull
TL-P	1	Transom Engine Lip, Port
TL-S	1	Transom Engine Lip, Stbd
TR	1	Transom
	21	Sub Total 3/8" 5086 Parts
	186	Total Cut Parts

Response Marine, Inc.

631- 32x12 FBLC

File: RMI\designs\Chester\631 ...\

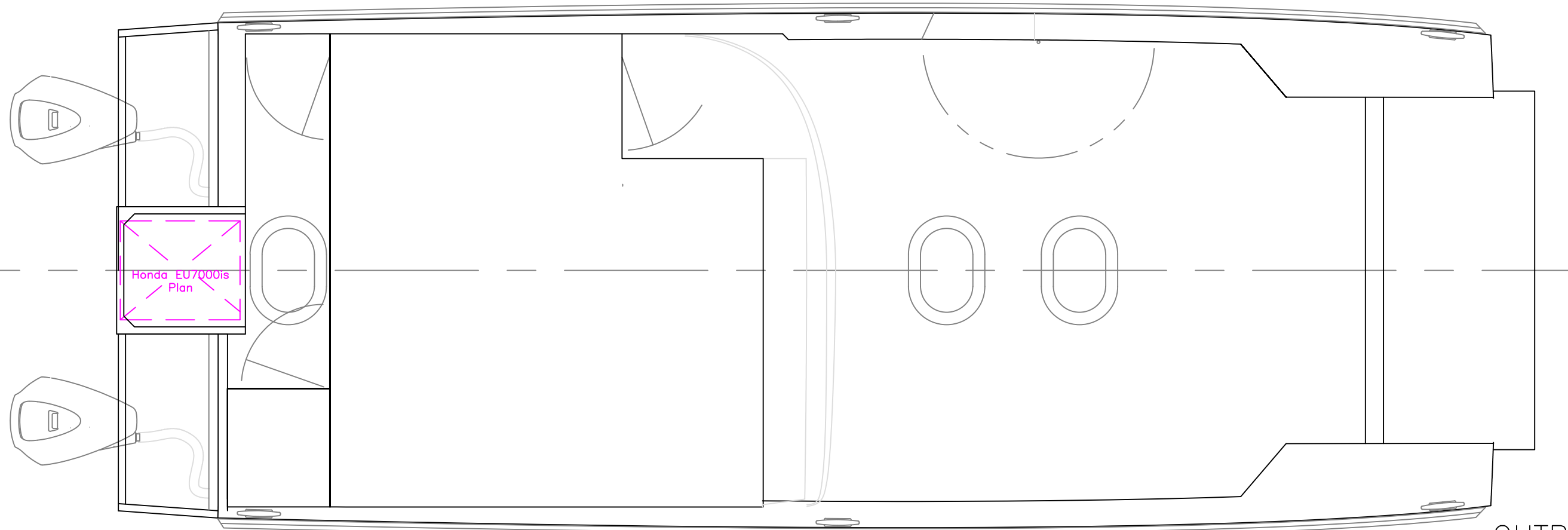
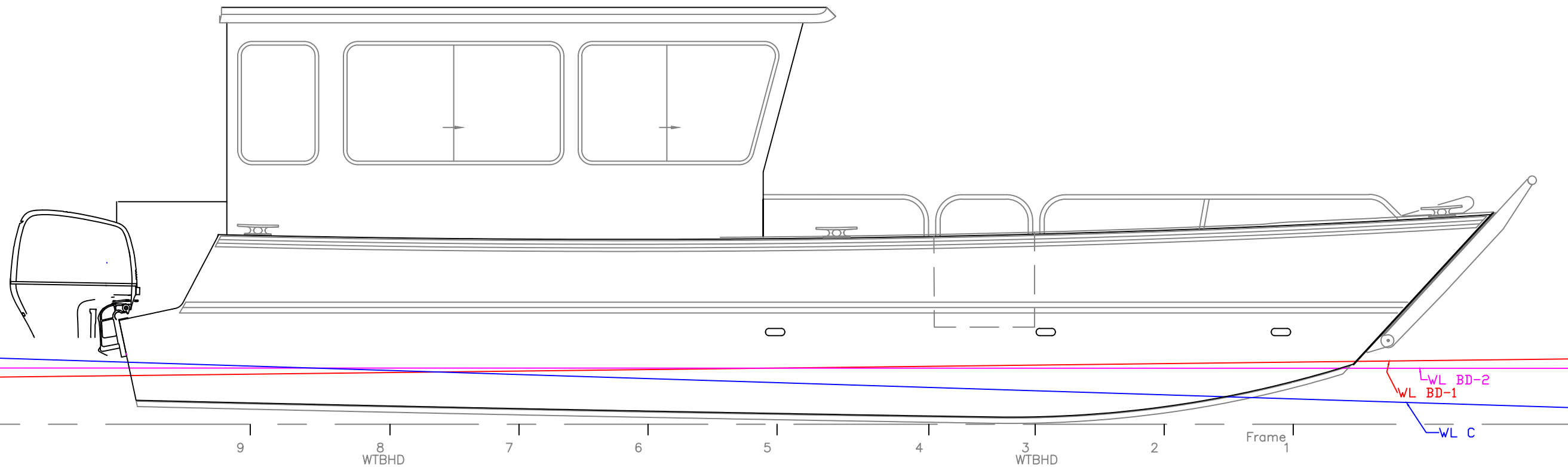
8/6/22

EXTRUSION

<u>Use</u>	<u>QTY</u>	<u>Alloy</u>	<u>Item</u>	<u>Lgth (ft)</u>	<u>lbs/ft</u>	<u>lbs</u>
Bottom & Bow Door	7	6061 T6	3" x 1.50" x 1.73# Channel (Am. Standard)	25	1.73	303
Bow Door Stiffs & Slats	7	6061 T6	2"x.5" Flat Bar	12	1.179	99
Bow Door Flanges	4	6061 T6	2"x.250" Flat Bar	12	.59	28
Frame & Girder Flanges	45	6061 T6	1.5"x.188" Flat Bar	12	.332	179
House	2	6061 T6	2x2x.25" Angle	25	1.11	56
House & Tank	1	6061 T6	1.5x1.5x.188" Angle	25	.622	16
Deck	16	6061 T6	1.5" x .188" Sq Tube	24	1.14	438
Rub Rail & Strakes, to be split	3	6061 T6	3" Sch 40 Pipe	20	2.62	157
Door (need ~8')	1	6061 T6	2" Sch 80 Pipe	20	1.74	35
					Sub Total	1,310

Not Included:

Pipes for railings



OUTBOARD VIEWS		
32' x12' LANDING CRAFT		
For: Chester Boat Works		
SCALE 3/8" = 1'	DES/DWN WAL	DATE 8/6/22
Response Marine, Inc. Newburyport, MA, www.responsemarine.com		SHEET DWG NO. 631-1

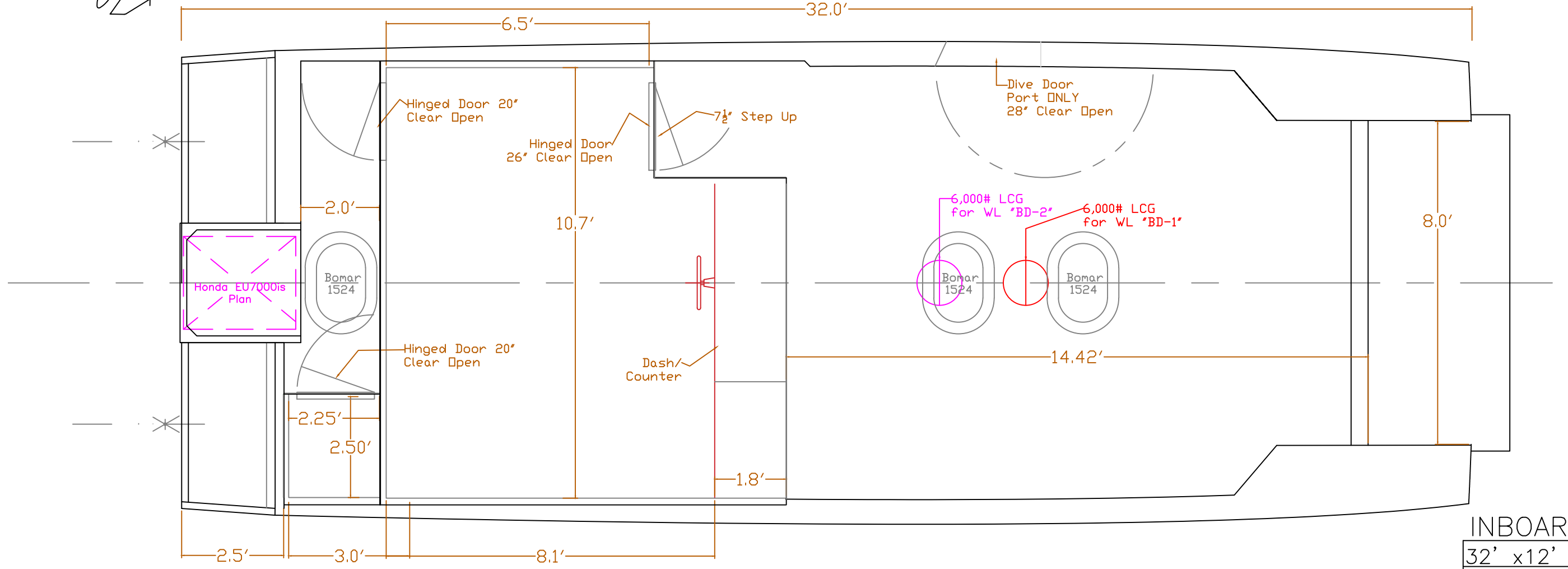
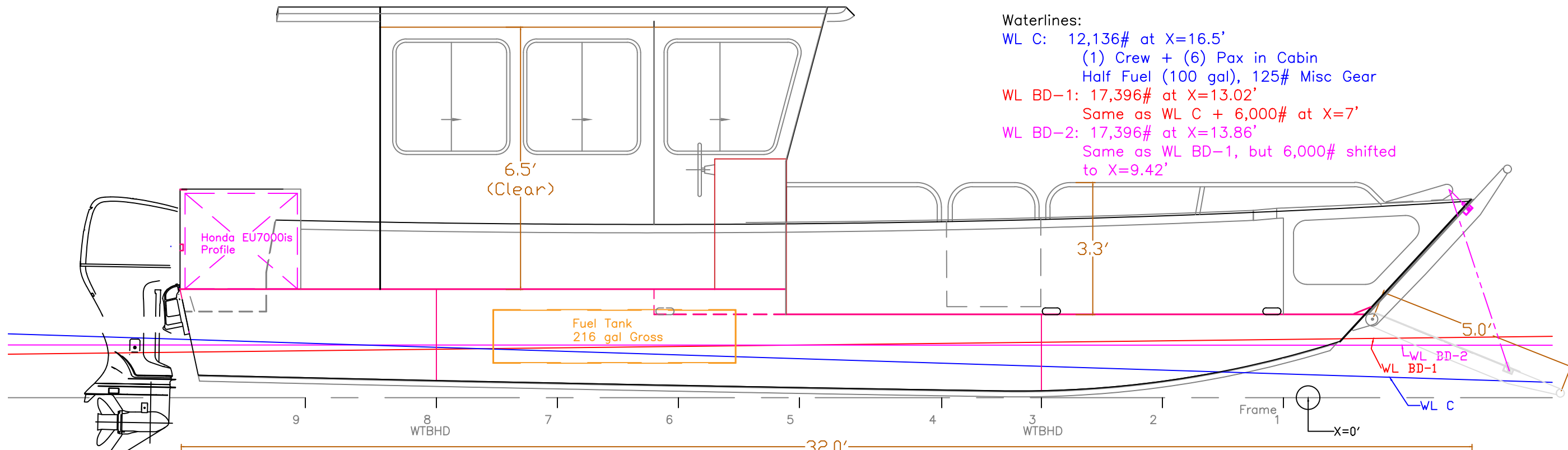
REV.	DESCRIPTION

Waterlines:

WL C: 12,136# at X=16.5'
 (1) Crew + (6) Pax in Cabin
 Half Fuel (100 gal), 125# Misc Gear

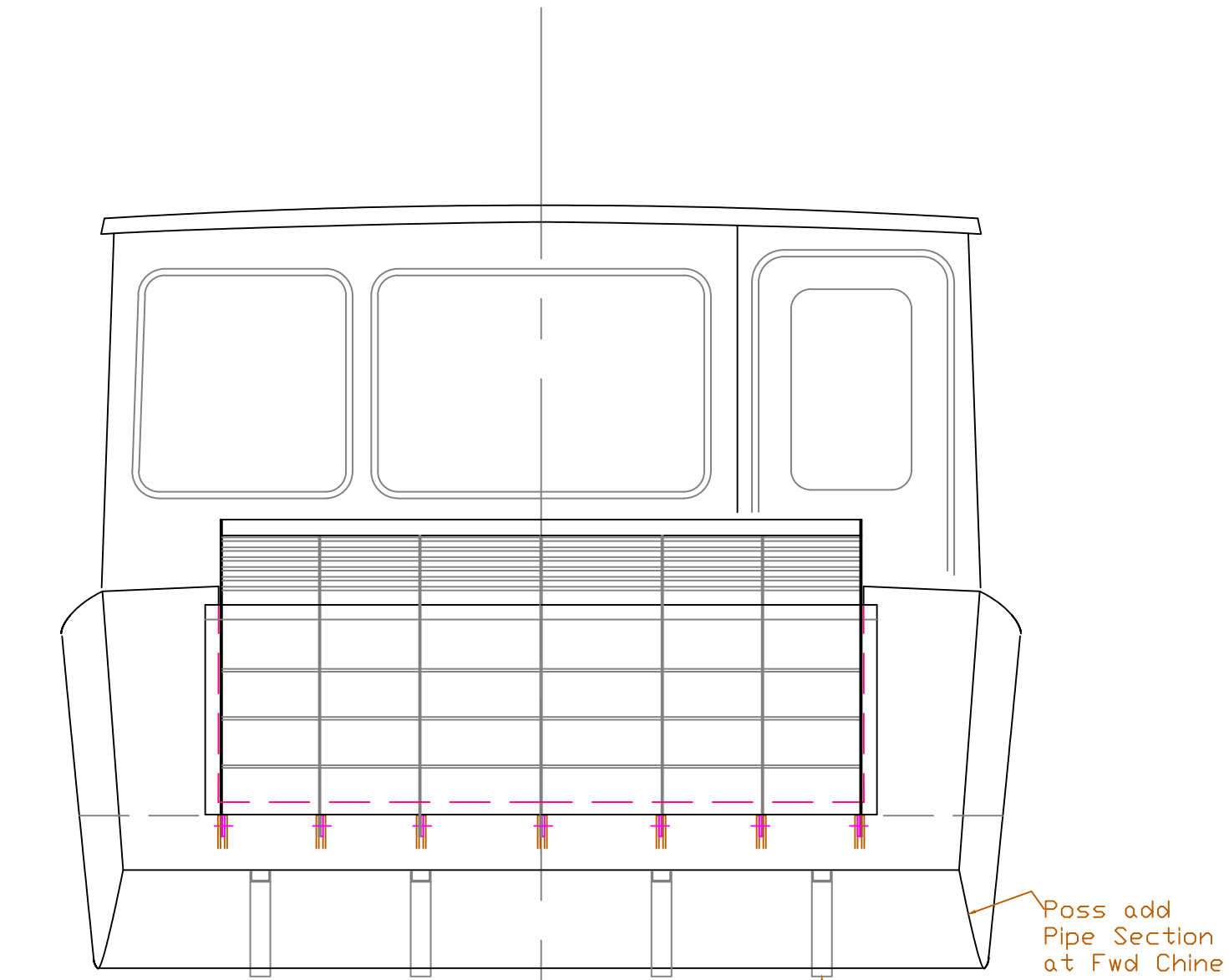
WL BD-1: 17,396# at X=13.02'
 Same as WL C + 6,000# at X=7'

WL BD-2: 17,396# at X=13.86'
 Same as WL BD-1, but 6,000# shifted
 to X=9.42'



INBOARD VIEWS		
32' x12' LANDING CRAFT		
For: Chester Boat Works		
SCALE 3/8" = 1'	DES/DWN WAL	DATE 8/6/22
SHEET		DWG NO. 631-2
Response Marine, Inc. Newburyport, MA, www.responsemarine.com		

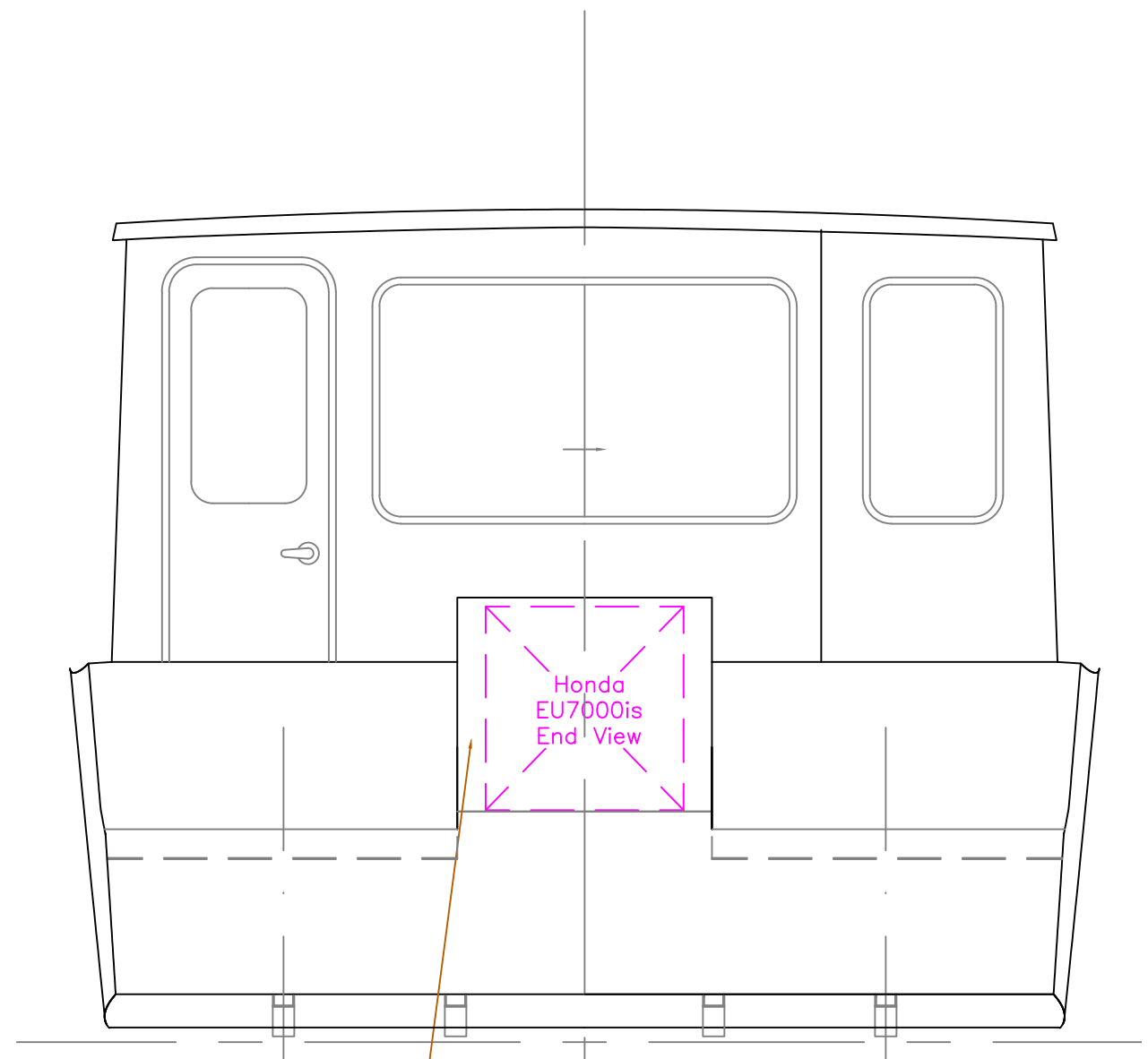
REV.	DESCRIPTION



Bow View

3"x1 1/2" Channel
-4 Places

Poss add
Pipe Section
at Fwd Chine



Transom View

Generator Boundary
-Closed Back & Sides
-Open Top & Front

7.0'
Eng CL

INBOARD VIEWS

32' x12' LANDING CRAFT

For: Chester Boat Works

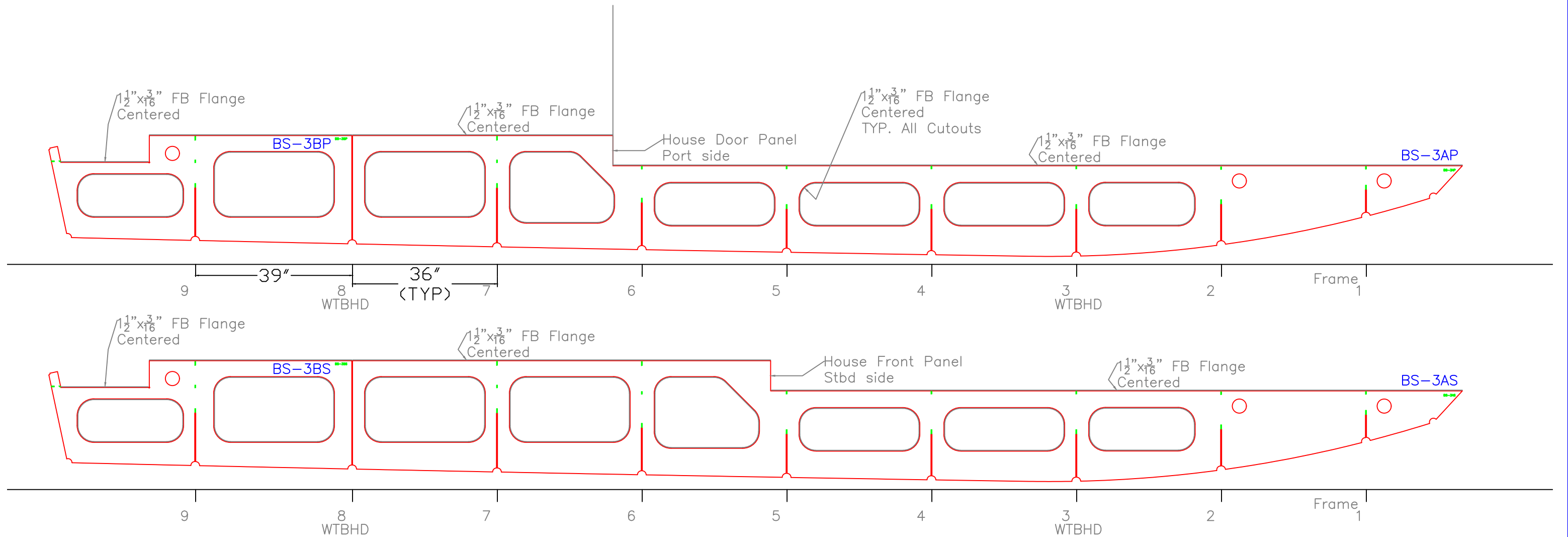
SCALE 1/2" = 1'	DES/DWN WAL	DATE 8/6/22
--------------------	----------------	----------------

SHEET	
-------	--

Response Marine, Inc.
Newburyport, MA, www.responsemarine.com

DWG NO.
631-3

REV.	DESCRIPTION

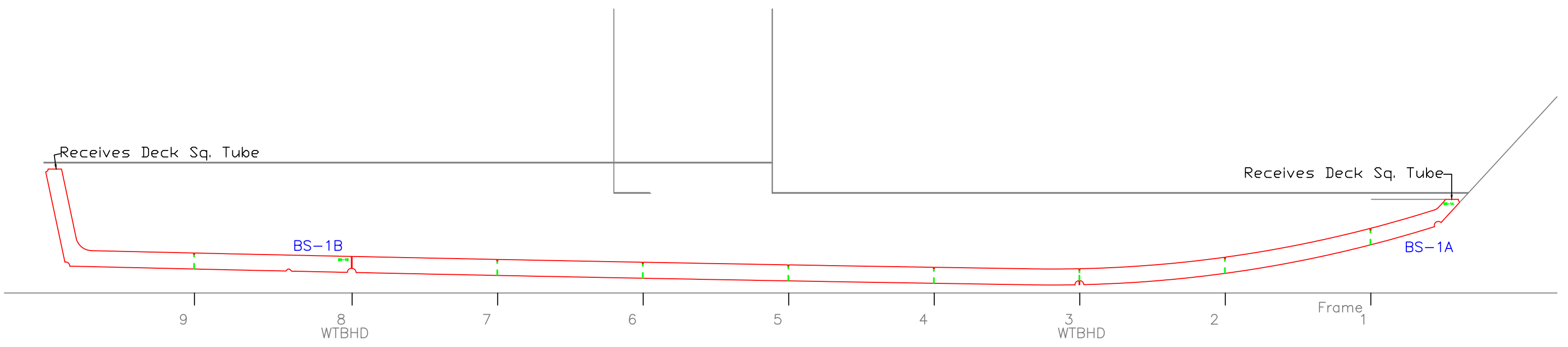
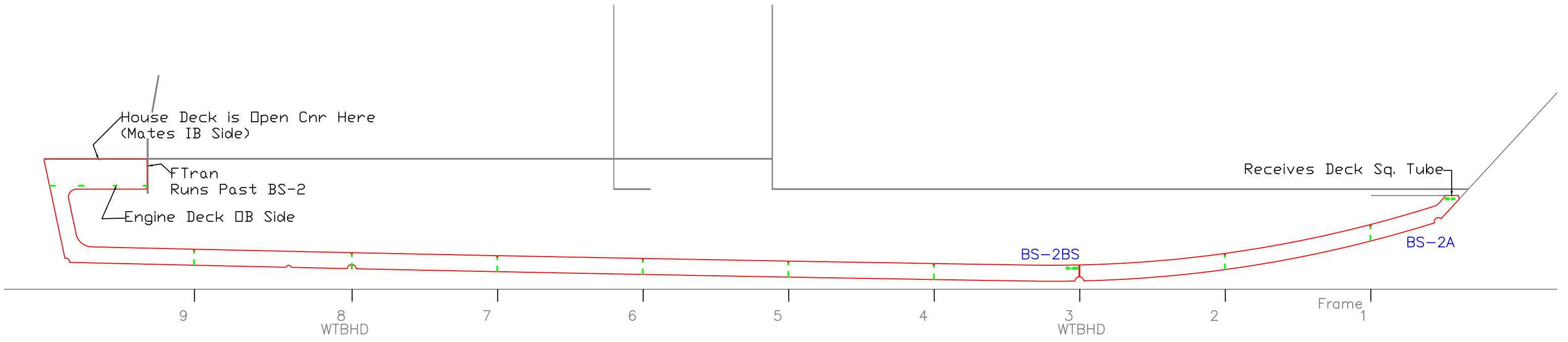


Install w/ Marks Inboard
(Stbd Parts shown Mirrored)

This drawing and referenced information represent the intellectual property of Response Marine, Inc. Use, reproduction, or transmittal of drawings and referenced NC part files requires pre-payment of licensing fee to Response Marine, Inc. Construction of each boat and component fabrication are licensed on a per boat basis, and require proof of payment for each unit built, prior to construction. Possession of this drawing and referenced information does not constitute the right to use. Proper boat construction and outfitting requires knowledge and expertise beyond the scope of this, and other, drawings, and this knowledge and expertise is the sole responsibility of the builder.

REV.	DESCRIPTION

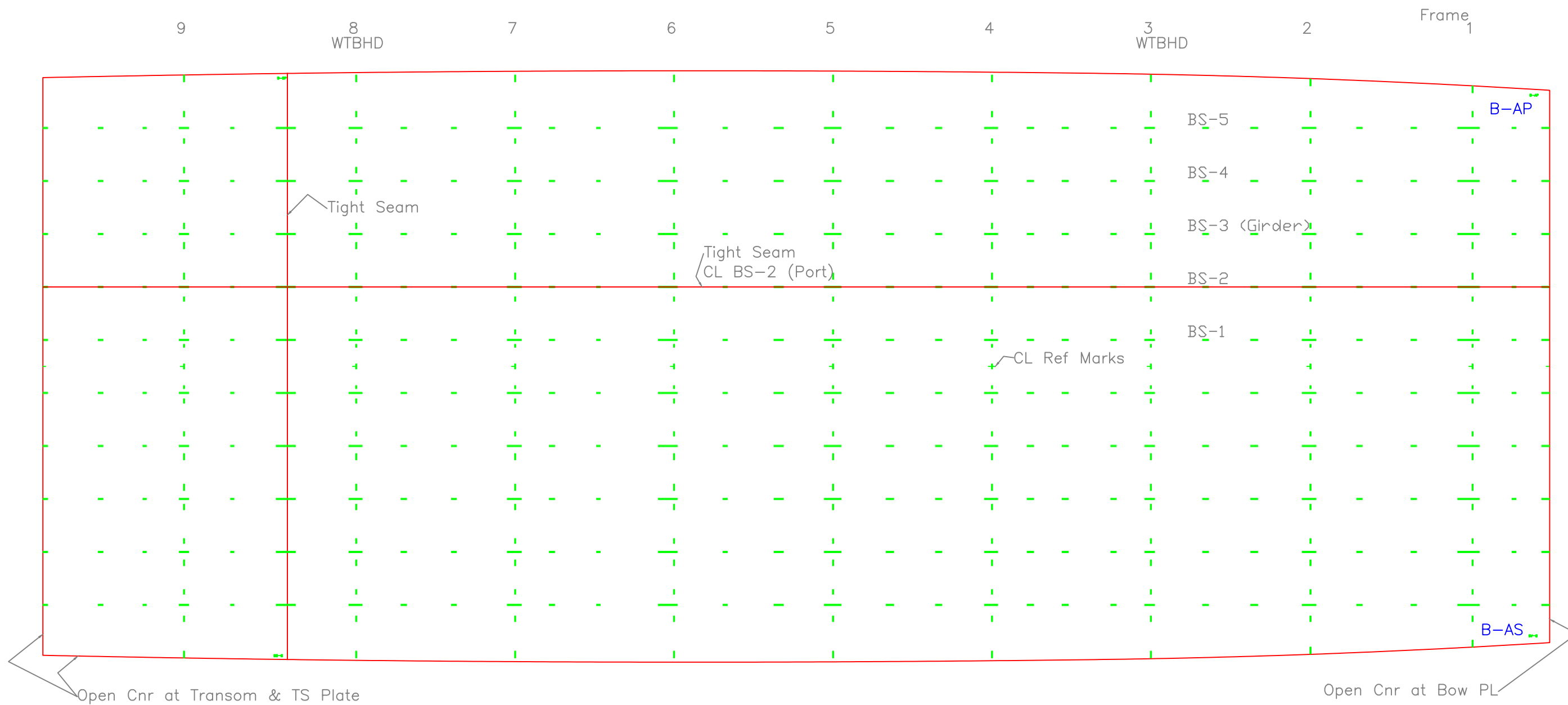
Girders- BS-3P/S		
32' x12' LANDING CRAFT		
SCALE 1/2"=1'	DES/DWN WAL	DATE 7/13/22
Response Marine, Inc. Newburyport, MA, www.responsemarine.com		SHEET DWG NO. 631-2-1



BOTTOM STRINGERS 1 & 2		
32' x 12' LANDING CRAFT		
SCALE 1/2"=1'	DES/DWN WAL	DATE 7/13/22
Response Marine, Inc. Newburyport, MA, www.responsemarine.com		SHEET DWG NO. 631-2-3

This drawing and referenced information represent the intellectual property of Response Marine, Inc. Use, reproduction, or transmittal of drawings and referenced NC part files requires pre-payment of licensing fee to Response Marine, Inc. Construction of each boat and component fabrication are licensed on a per boat basis, and require proof of payment for each unit built, prior to construction. Possession of this drawing and referenced information does not constitute the right to use. Proper boat construction and outfitting requires knowledge and expertise beyond the scope of this, and other, drawings, and this knowledge and expertise is the sole responsibility of the builder.

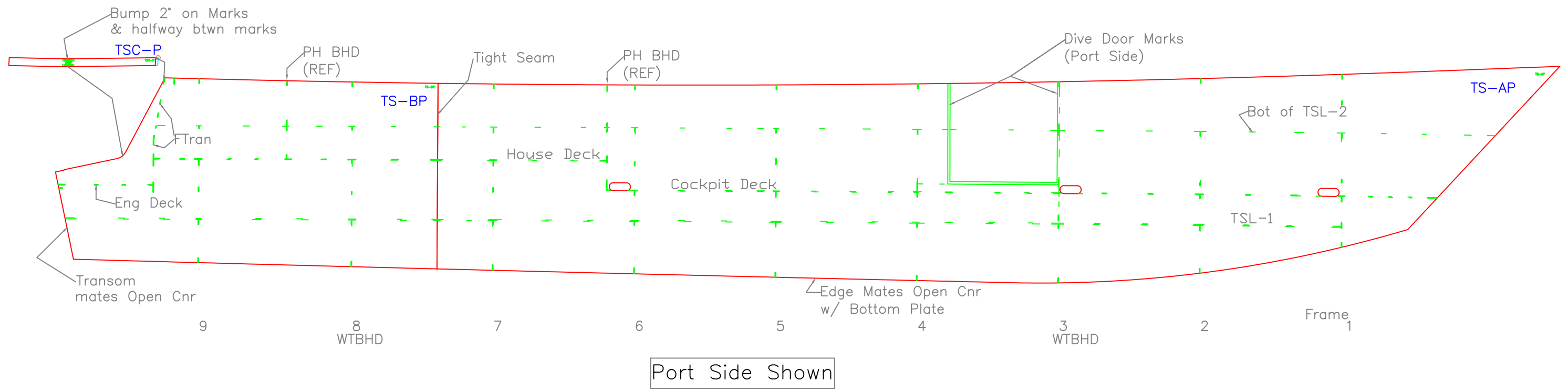
REV.	DESCRIPTION



This drawing and referenced information represent the intellectual property of Response Marine, Inc. Use, reproduction, or transmittal of drawings and referenced NC part files requires pre-payment of licensing fee to Response Marine, Inc. Construction of each boat and component fabrication are licensed on a per boat basis, and require proof of payment for each unit built, prior to construction. Possession of this drawing and referenced information does not constitute the right to use. Proper boat construction and outfitting requires knowledge and expertise beyond the scope of this, and other, drawings, and this knowledge and expertise is the sole responsibility of the builder.

REV.	DESCRIPTION

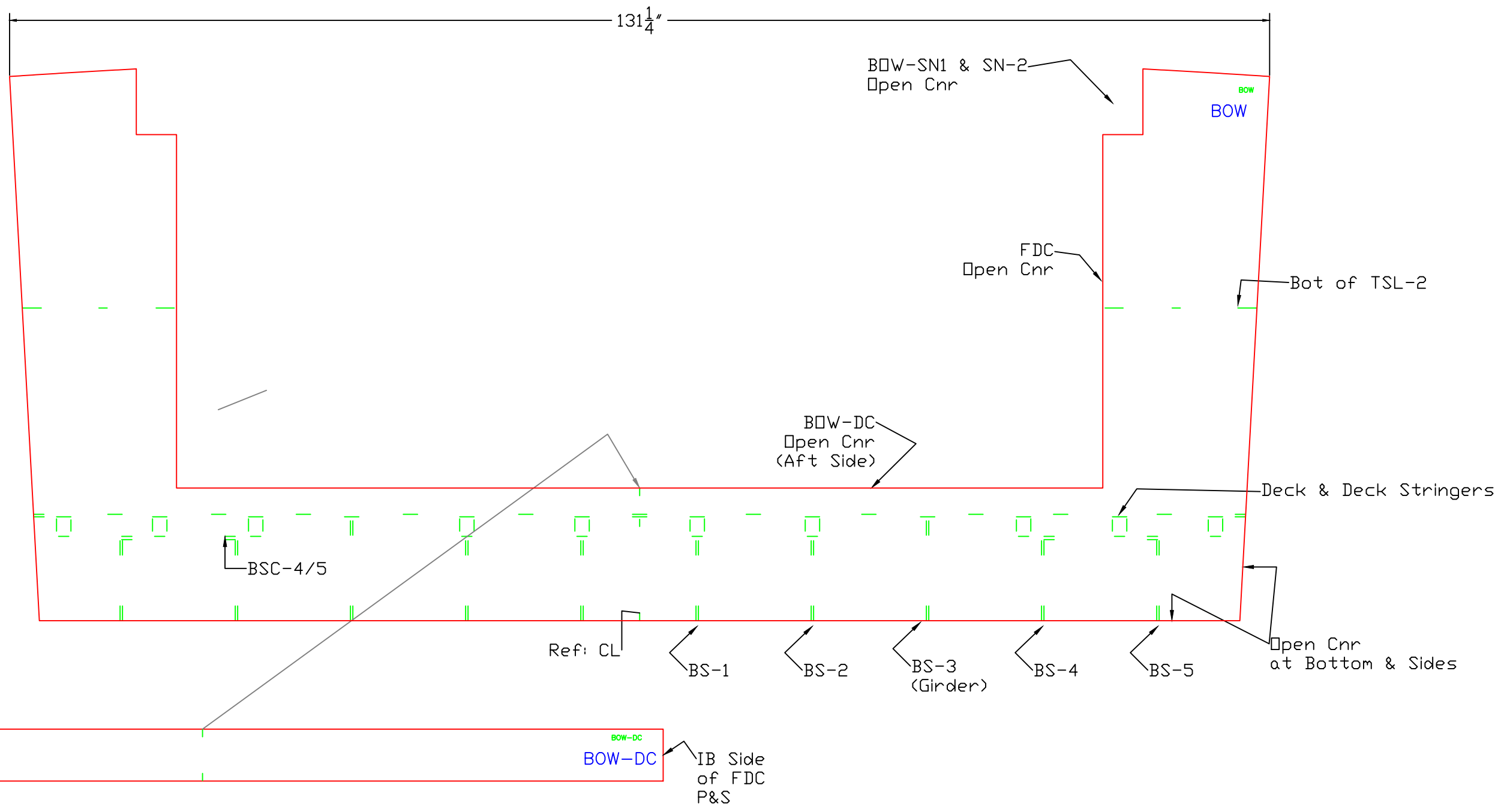
BOTTOM PLATE LAYOUT		
32' x12' LANDING CRAFT		
SCALE NONE	DES/DWN WAL	DATE 7/13/22
Response Marine, Inc. Newburyport, MA, www.responsemarine.com		SHEET DWG NO. 631-2-5



This drawing and referenced information represent the intellectual property of Response Marine, Inc. Use, reproduction, or transmittal of drawings and referenced NC part files requires pre-payment of licensing fee to Response Marine, Inc. Construction of each boat and component fabrication are licensed on a per boat basis, and require proof of payment for each unit built, prior to construction. Possession of this drawing and referenced information does not constitute the right to use. Proper boat construction and outfitting requires knowledge and expertise beyond the scope of this, and other, drawings, and this knowledge and expertise is the sole responsibility of the builder.

REV.	DESCRIPTION

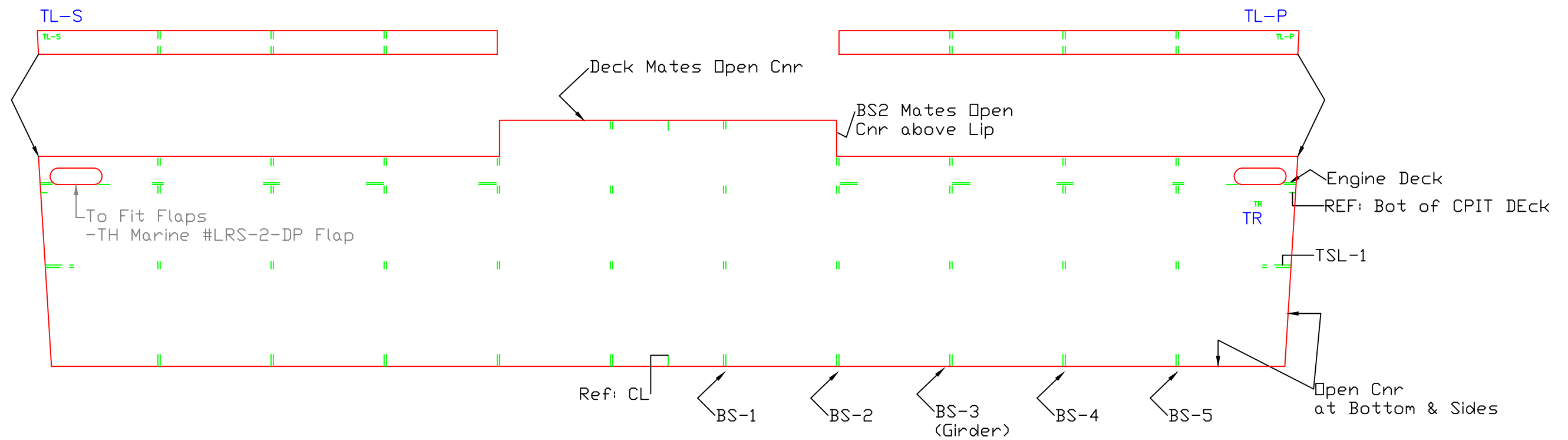
TOPSIDES PLATE LAYOUT		
32' x 12' LANDING CRAFT		
SCALE NONE	DES/DWN WAL	DATE 7/13/22
Response Marine, Inc. Newburyport, MA, www.responsemarine.com		SHEET DWG NO. 631-2-6



This drawing and referenced information represent the intellectual property of Response Marine, Inc. Use, reproduction, or transmittal of drawings and referenced NC part files requires pre-payment of licensing fee to Response Marine, Inc. Construction of each boat and component fabrication are licensed on a per boat basis, and require proof of payment for each unit built, prior to construction. Possession of this drawing and referenced information does not constitute the right to use. Proper boat construction and outfitting requires knowledge and expertise beyond the scope of this, and other, drawings, and this knowledge and expertise is the sole responsibility of the builder.

REV.	DESCRIPTION

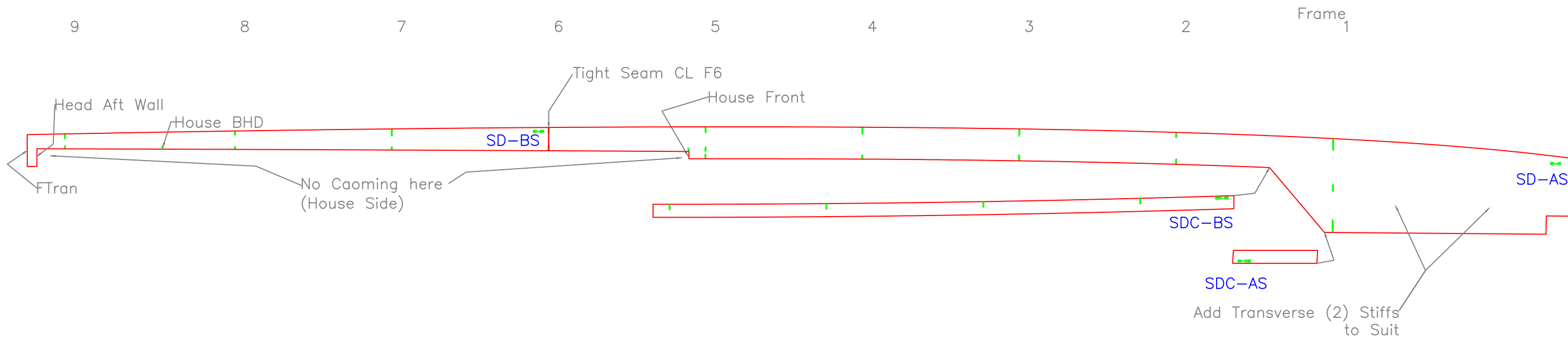
BOW		
32' x 12' LANDING CRAFT		
SCALE 1"=1'	DES/DWN WAL	DATE 7/13/22
Response Marine, Inc. Newburyport, MA, www.responsemarine.com		SHEET DWG NO. 631-2-8



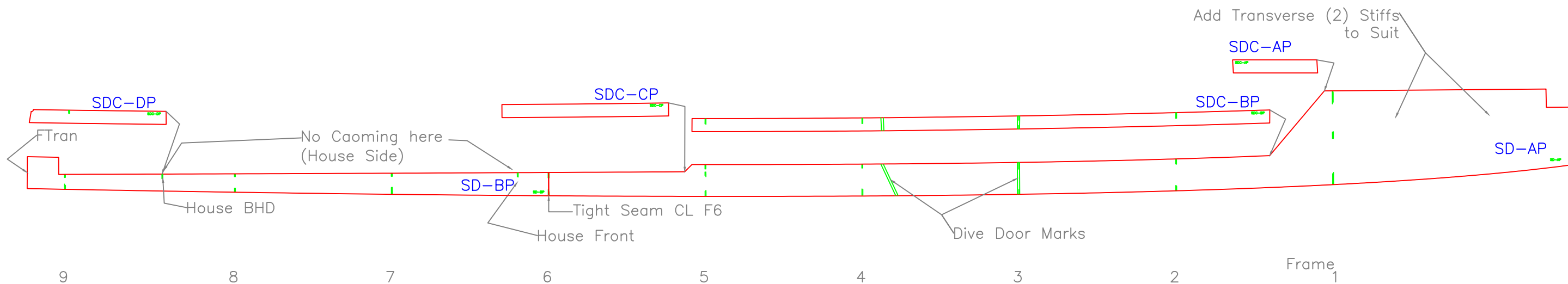
This drawing and referenced information represent the intellectual property of Response Marine, Inc. Use, reproduction, or transmittal of drawings and referenced NC part files requires pre-payment of licensing fee to Response Marine, Inc. Construction of each boat and component fabrication are licensed on a per boat basis, and require proof of payment for each unit built, prior to construction. Possession of this drawing and referenced information does not constitute the right to use. Proper boat construction and outfitting requires knowledge and expertise beyond the scope of this, and other, drawings, and this knowledge and expertise is the sole responsibility of the builder.

REV.	DESCRIPTION

TRANSOM		
32' x12' LANDING CRAFT		
SCALE 1"=1'	DES/DWN WAL	DATE 7/13/22
Response Marine, Inc. Newburyport, MA, www.responsemarine.com		SHEET DWG NO. 631-2-9



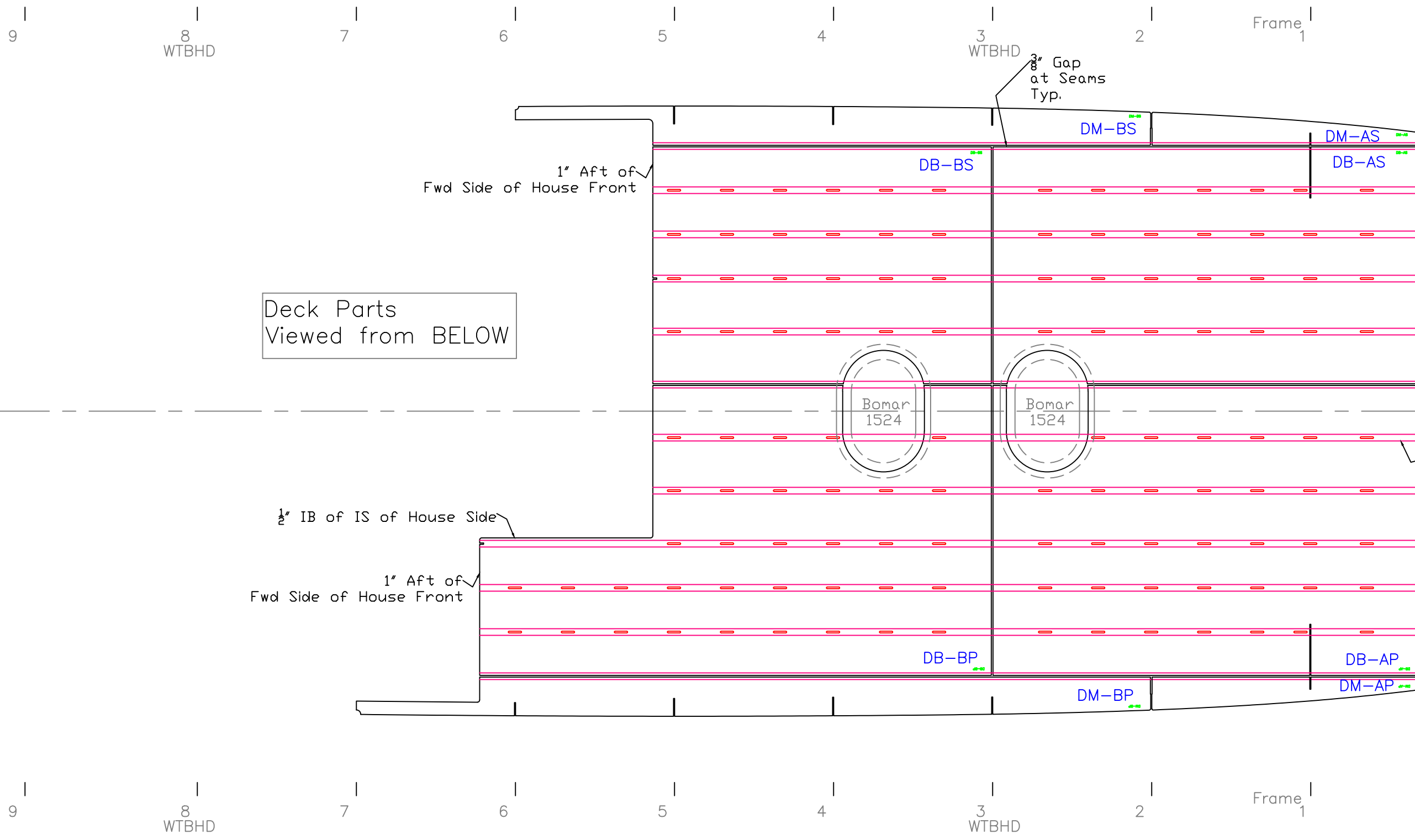
Side Deck Parts Viewed from BELOW



This drawing and referenced information represent the intellectual property of Response Marine, Inc. Use, reproduction, or transmittal of drawings and referenced NC part files requires pre-payment of licensing fee to Response Marine, Inc. Construction of each boat and component fabrication are licensed on a per boat basis, and require proof of payment for each unit built, prior to construction. Possession of this drawing and referenced information does not constitute the right to use. Proper boat construction and outfitting requires knowledge and expertise beyond the scope of this, and other, drawings, and this knowledge and expertise is the sole responsibility of the builder.

REV.	DESCRIPTION

SIDE DECK LAYOUT		
32' x12' LANDING CRAFT		
SCALE 1/2"=1'	DES/DWN WAL	DATE 7/13/22
Response Marine, Inc. Newburyport, MA, www.responsemarine.com		SHEET DWG NO. 631-2-11



Deck Parts
Viewed from BELOW

Deck Stringers
1 1/2" x 3/16" Sq Tube

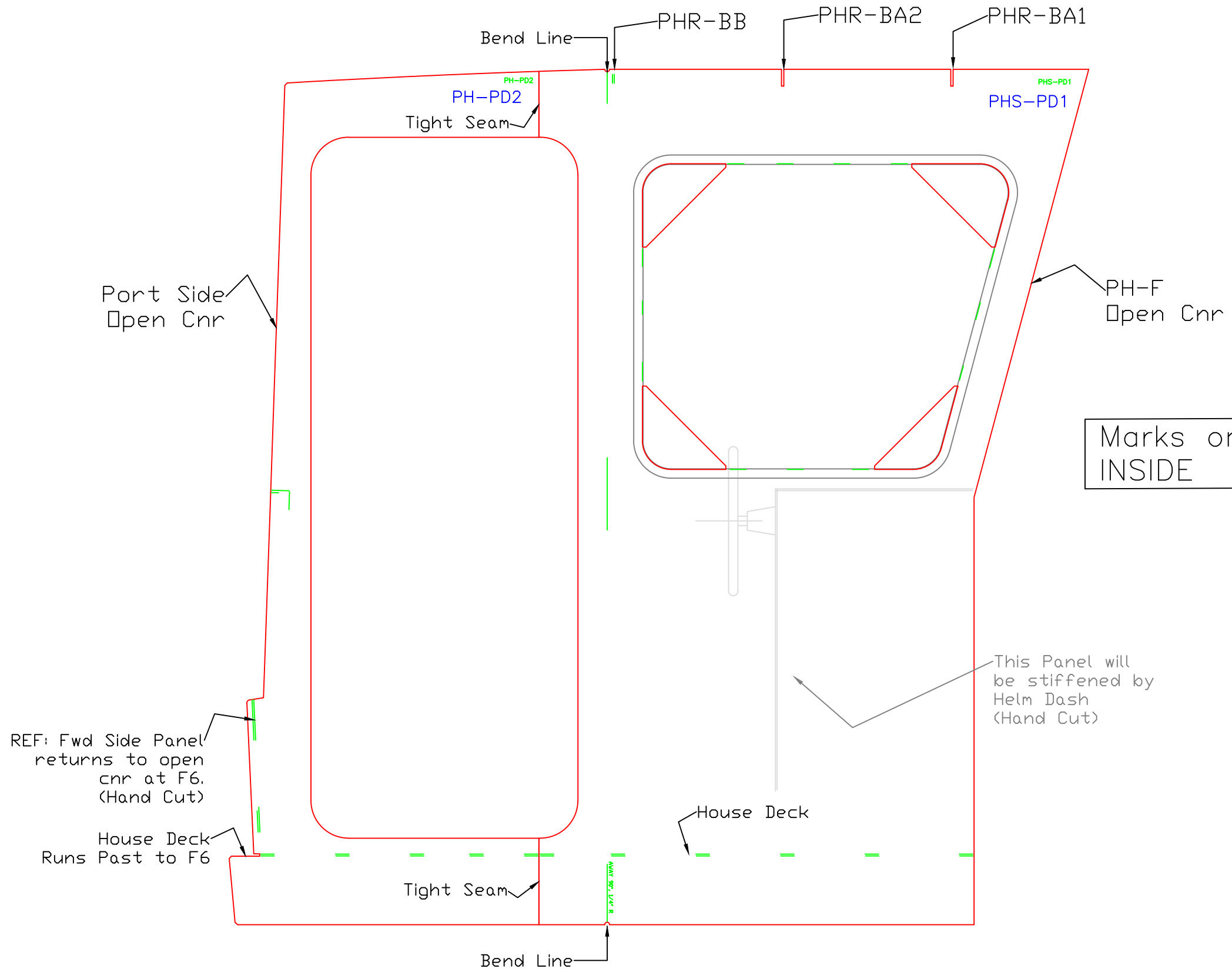
Bomar
1524

Bomar
1524

COCKPIT DECK		
32' x 12' LANDING CRAFT		
SCALE 1/2"=1'	DES/DWN WAL	DATE 7/13/22
Response Marine, Inc. Newburyport, MA, www.responsemarine.com		SHEET DWG NO. 631-2-12

This drawing and referenced information represent the intellectual property of Response Marine, Inc. Use, reproduction, or transmittal of drawings and referenced NC part files requires pre-payment of licensing fee to Response Marine, Inc. Construction of each boat and component fabrication are licensed on a per boat basis, and require proof of payment for each unit built, prior to construction. Possession of this drawing and referenced information does not constitute the right to use. Proper boat construction and outfitting requires knowledge and expertise beyond the scope of this, and other, drawings, and this knowledge and expertise is the sole responsibility of the builder.

REV.	DESCRIPTION

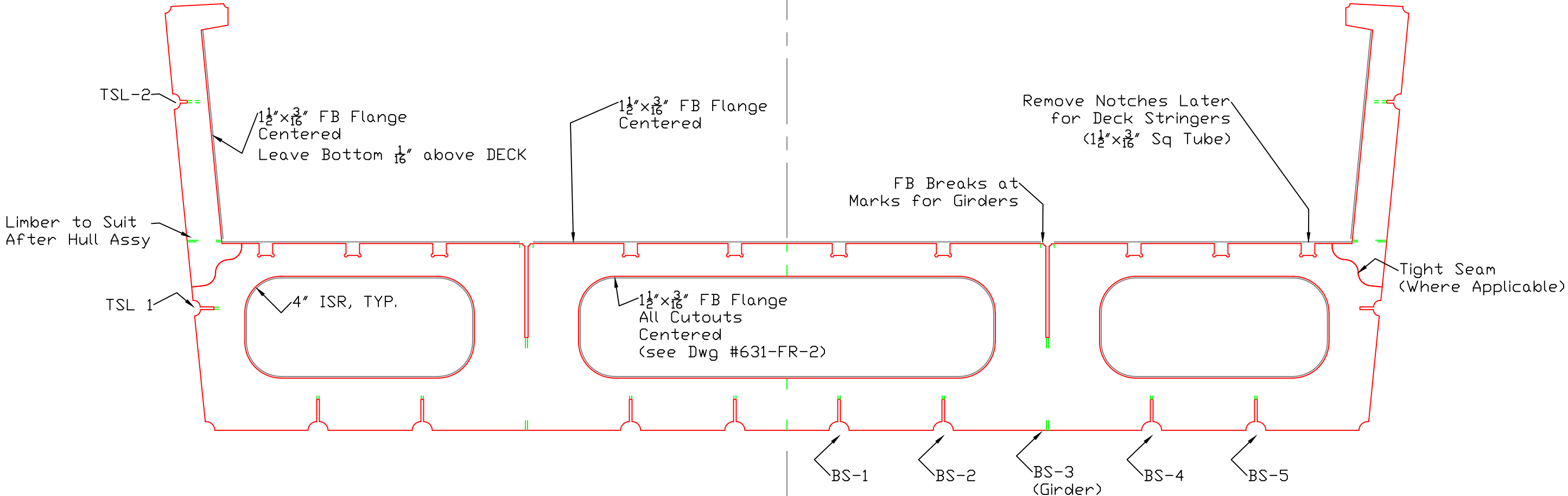


House- Front (Stbd)		
32' x12' LANDING CRAFT		
SCALE 1" = 1'	DES/DWN WAL	DATE 8/4/22
Response Marine, Inc. Newburyport, MA, www.responsemarine.com		SHEET DWG NO. 631-4-2

This drawing and referenced information represent the intellectual property of Response Marine, Inc. Use, reproduction, or transmittal of drawings and referenced NC part files requires pre-payment of licensing fee to Response Marine, Inc. Construction of each boat and component fabrication are licensed on a per boat basis, and require proof of payment for each unit built, prior to construction. Possession of this drawing and referenced information does not constitute the right to use. Proper boat construction and outfitting requires knowledge and expertise beyond the scope of this, and other, drawings, and this knowledge and expertise is the sole responsibility of the builder.

REV.	DESCRIPTION

Flanging is same for All Frames
Except as noted on Frame Drawings



This drawing and referenced information represent the intellectual property of Response Marine, Inc. Use, reproduction, or transmittal of drawings and referenced NC part files requires pre-payment of licensing fee to Response Marine, Inc. Construction of each boat and component fabrication are licensed on a per boat basis, and require proof of payment for each unit built, prior to construction. Possession of this drawing and referenced information does not constitute the right to use. Proper boat construction and outfitting requires knowledge and expertise beyond the scope of this, and other, drawings, and this knowledge and expertise is the sole responsibility of the builder.

REV.	DESCRIPTION

TYPICAL FRAME DETAILS		
32' x 12' LANDING CRAFT		
SCALE 1" = 1'	DES/DWN WAL	DATE 7/13/22
Response Marine, Inc. Newburyport, MA, www.responsemarine.com		SHEET DWG NO. 631-FR-1