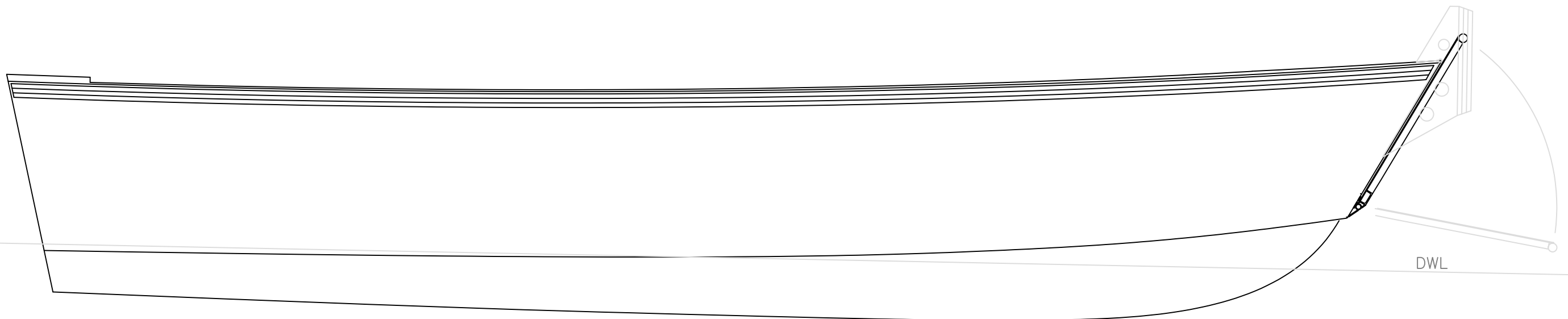


Particulars
 Hull LOA (molded) - 26' - 3"
 Hull Beam (molded) - 8' - 5 3/8"
 Displacement - 4,100# - w/ 485# Engine, no crew, no fuel
 Hull Draft - 13 1/2" (4,400# DWL)



7 | 6 | 5 | 4 | 3 | 2 | Frame 1 |
 WTBD WTBD

PROFILE & PLAN

26' V LANDING CRAFT

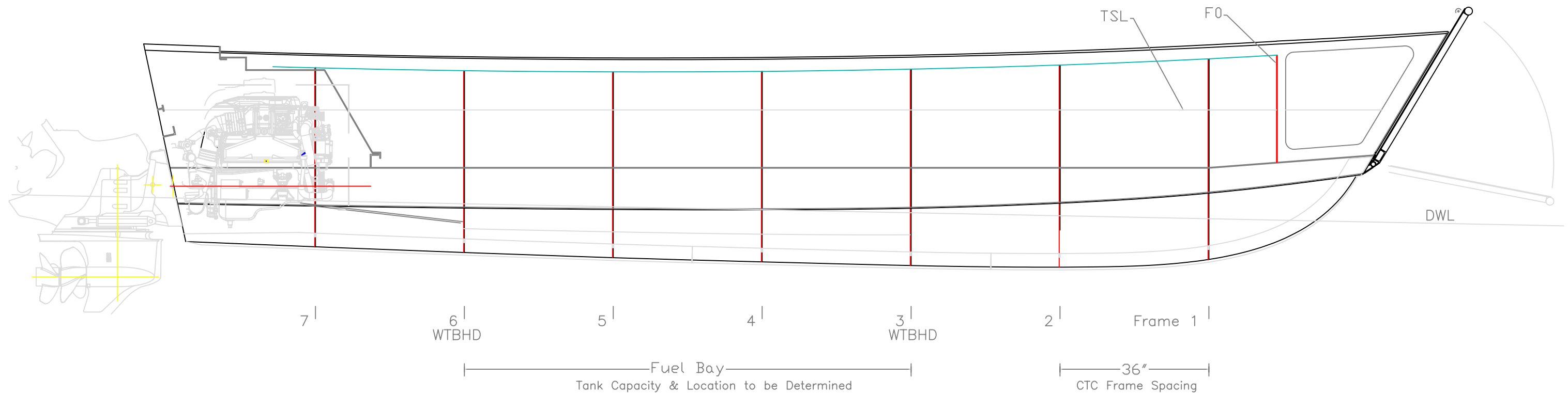
For: Tom Sears

SCALE 1/2" = 1'	DES/DWN WAL	DATE 8/9/07
--------------------	----------------	----------------

Response Marine, Inc.	SHEET
------------------------------	-------

Newburyport, MA, www.responsemarine.com	DWG NO. 294-01
---	----------------

REV.	DESCRIPTION



INBOARD PROFILE

26' V LANDING CRAFT

For: Tom Sears

SCALE 1/2" = 1'	DES/DWN WAL	DATE 8/9/07
--------------------	----------------	----------------

Response Marine, Inc.	SHEET
------------------------------	-------

Newburyport, MA, www.responsemarine.com	DWG NO. 294-02
---	----------------

REV.	DESCRIPTION