

Response Marine, Inc. Plaz Parts for WBI 22 ext- Balestra  
 File: RMLeng\Wiking\WBI 22 extl...  
 revised: 8/3/08

Print Date: 8/3/2008

**3/16" Parts- 5086**

<u>Part #</u>	<u>Pieces</u>	<u>Description</u>	<u>Stock</u>	<u>Bending</u>
FD-S	1	Foredeck Stbd		
FD-P	1	Foredeck Port		
SDC-AP	1	Side Deck Coaming- Fwd Port		
SDC-AS	1	Side Deck Coaming- Fwd Stbd		
SDC-BS	1	Side Deck Coaming- Aft Stbd		
SDC-BP	1	Side Deck Coaming- Aft Port		
SD-P	1	Side Deck, Port		
SD-S	1	Side Deck, Stbd		
J-FD	1	Foredeck Jig (at Marks on foredeck plates)		
ST	2	Scupper Tube		Y
ED	1	Engine Deck		
SM-A	2	Sole Margin fwd		
SM-B	2	Sole Margin aft		
SB	1	Sole, mid fwd		
SA	1	Sole, fwd		
TB	1	Transom Bulkhead		
	19	Total Pieces		

**3/16" Parts- 5052**

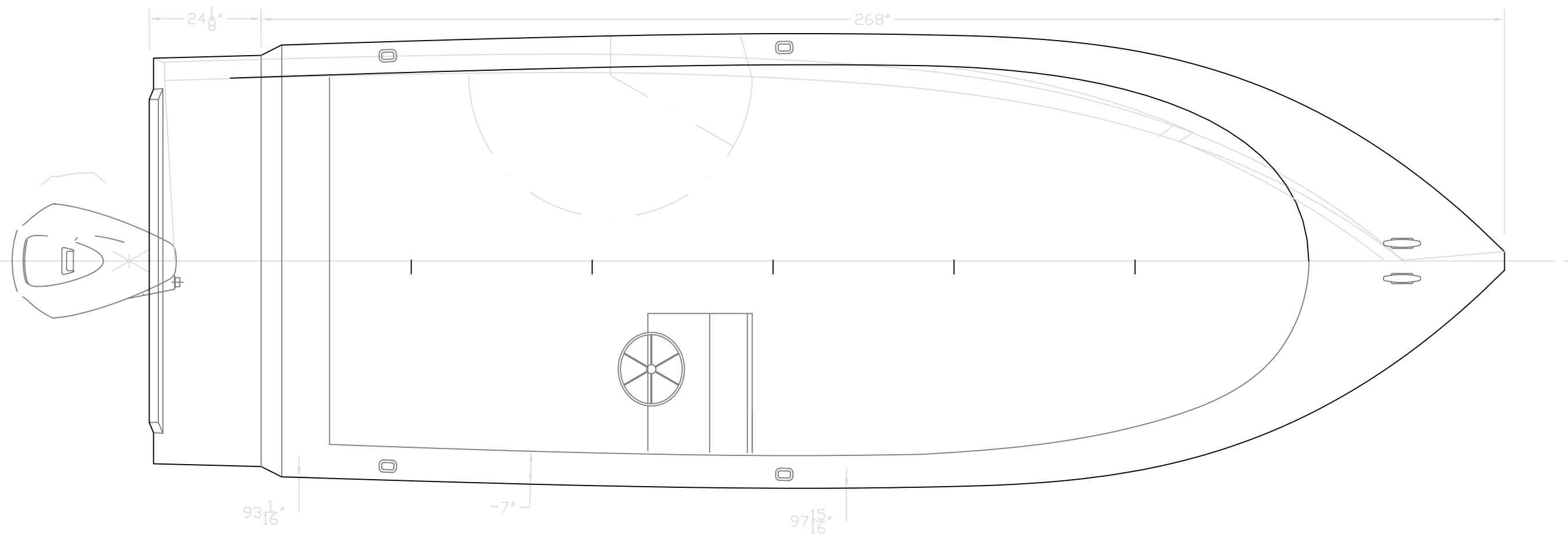
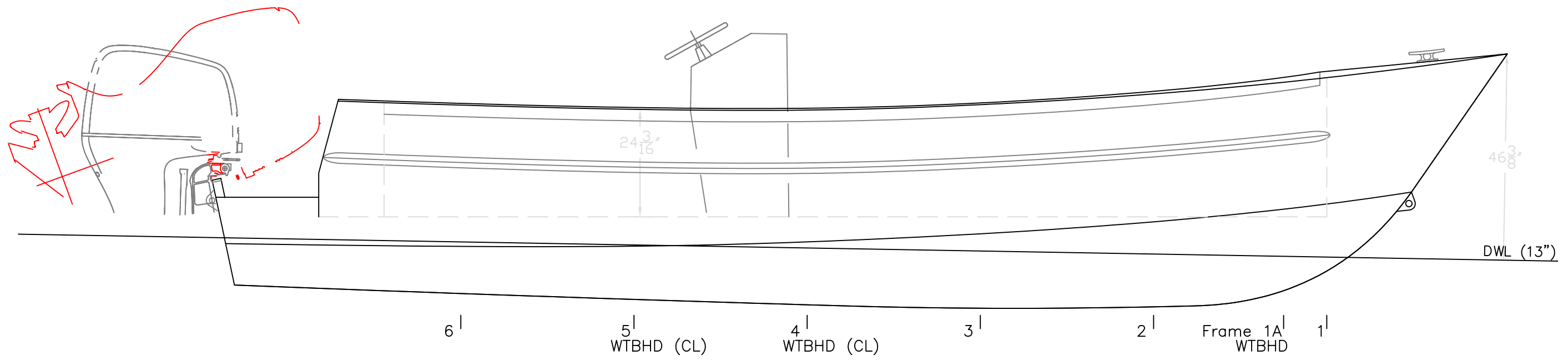
<u>Part #</u>	<u>Pieces</u>	<u>Description</u>	<u>Stock</u>	<u>Bending</u>
TS-BS	1	Topsides, Aft Stbd		
TS-BP	1	Topsides, Aft Port		
BS-2A	2	Butt Stringer #2, fwd		
BS-2B	2	Butt Stringer #2, aft		
F2	1	Frame 2		
TS-AP	1	Topsides, Fwd Port		
TS-AS	1	Topsides, Fwd Stbd		
F11	1	Frame 11 (just aft of F1, Bottom Only)		
F1	1	Frame 1		
F4	1	Frame 4 (bottom)		
F5	1	Frame 5 (bottom)		
F6	1	Frame 6 (bottom)		
F3	1	Frame 3 (bottom)		
ALB	1	Anchor Locker Bottom		
FT	1	False Transom		Y
SF	1	Stem Face		
	18	Total Pieces		

**1/4" Parts**

<u>Part #</u>	<u>Pieces</u>	<u>Description</u>	<u>Stock</u>
B-AS	1	Bottom, fwd stbd	
B-AP	1	Bottom, fwd port	
B-BS	1	Bottom, aft stbd	
B-BP	1	Bottom, aft port	
BS-1A	2	Bottom Stringer 1 (fwd)	
BS-1B	2	Bottom Stringer (aft)	
TRAN	1	Transom	
	9	Total Pieces	

**3/8" Parts**

<u>Part #</u>	<u>Pieces</u>	<u>Description</u>	<u>Stock</u>
C-AP	1	Chine, fwd port	
C-AS	1	Chine, fwd stbd	
C-BP	1	Chine, aft port	
C-BS	1	Chine, aft stbd	
KA	1	Keel, fwd	
KB	1	Keel Mid	
KC	1	Keel, Aft	
	7	Total 3/8" parts	
	34	Total Cut Parts	



OUTBOARD VIEWS

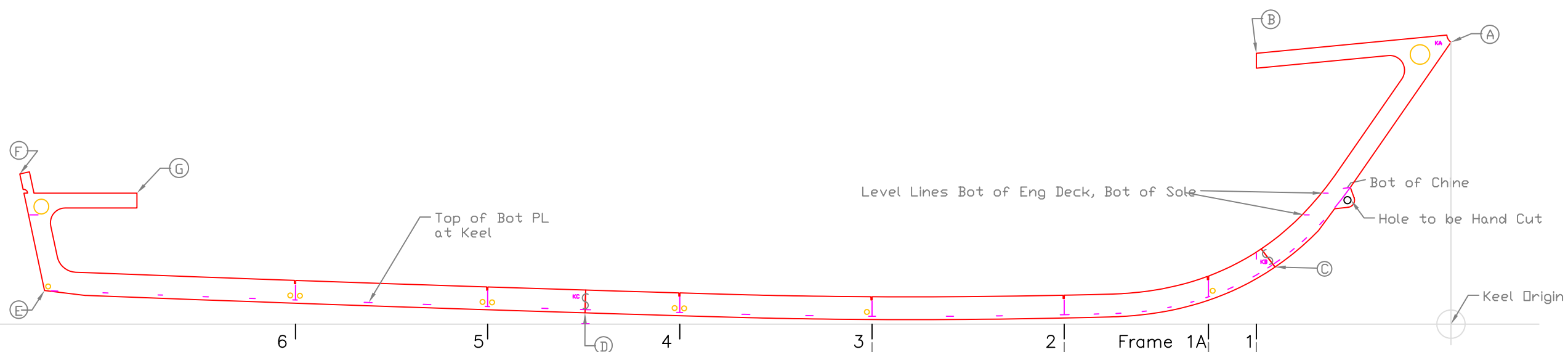
24'x8' BWDB

For: Winninghoff Boats

SCALE 1/2" = 1'	DES/DWN WAL	DATE 8/3/08
SHEET		DWG NO. 316-1

REV.	DESCRIPTION

**Response Marine, Inc.**  
Newburyport, MA, [www.responsemarine.com](http://www.responsemarine.com)



Level Lines Bot of Eng Deck, Bot of Sole

Bot of Chine

Hole to be Hand Cut

Keel Origin

39' [990.60] (Typ)

29 <sup>5</sup>/<sub>16</sub>' [743.86]

9 <sup>11</sup>/<sub>16</sub>' [246.74]

Keel Points	Inches- sixteenths		Feet	
	Horizontal	Vertical	Horizontal	Vertical
A to Origin	0	57 2/16	0.0000	4.7618
B to Origin				
C to Origin				
D to Origin				
E to Origin				
F to Origin				
G to Origin				
A to				
B to				
C to				
D to				
E to				
F to				
G to				

KEEL LAYOUT  
24'x8' BWDB  
For: Winninghoff Boats

SCALE 1/2" = 1'	DES/DWN WAL	DATE 8/3/08
<b>Response Marine, Inc.</b> <small>Newburyport, MA, www.responsemarine.com</small>		SHEET DWG NO. 316-2-1

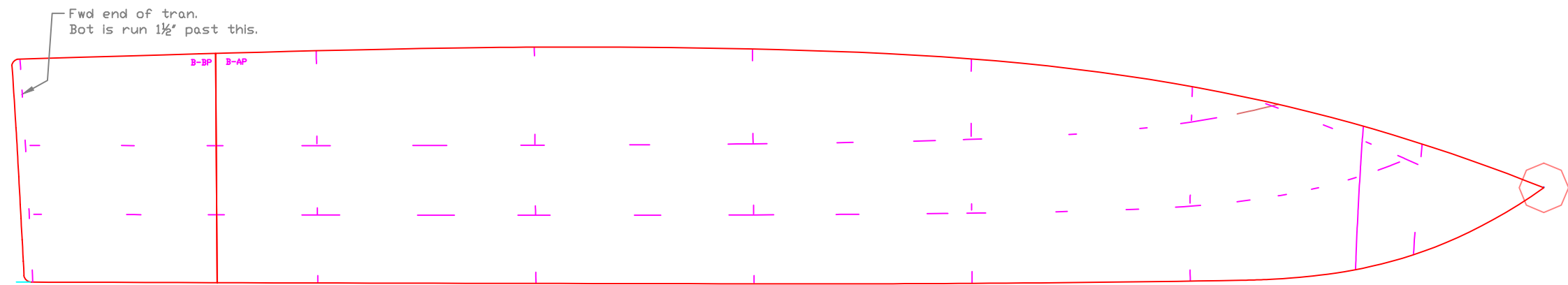
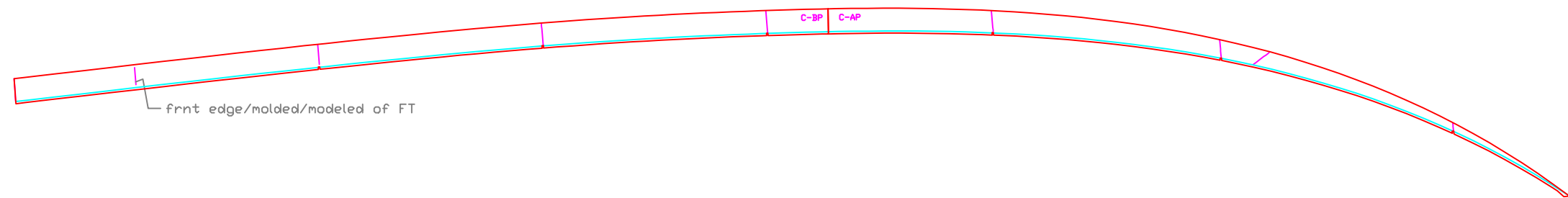
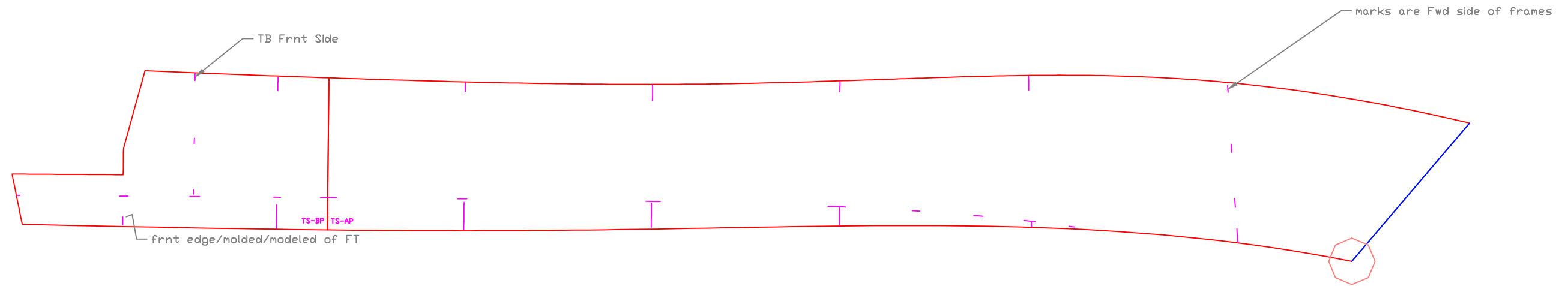
REV.	DESCRIPTION



GIRDER LAYOUT

24'x8' BWDB		
For: Winninghoff Boats		
SCALE 1/2" = 1'	DES/DWN WAL	DATE 9/10/08
<b>Response Marine, Inc.</b> <small>Nantuxport, MA www.responmarine.com</small>		SHEET DWG NO. 316-2-2

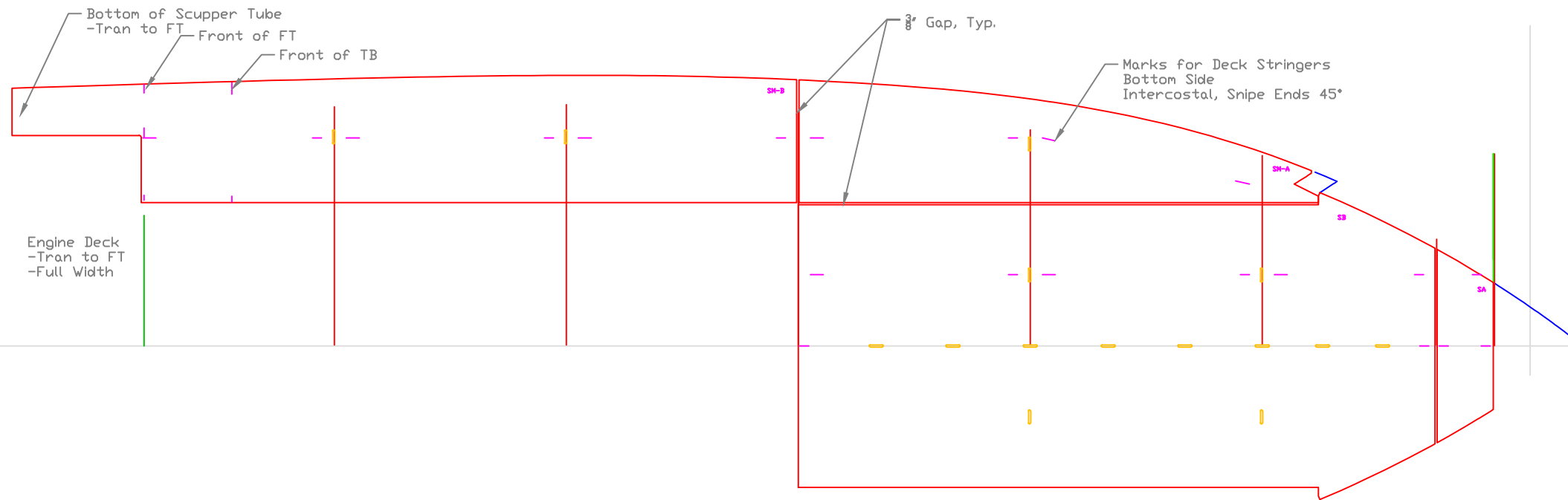
REV.	DESCRIPTION



HULL PLATES

24'x8' BWDB		
For: Winninghoff Boats		
SCALE 1/2" = 1'	DES/DWN WAL	DATE 9/10/08
<b>Response Marine, Inc.</b> <small>Nantuxport, MA www.responsemarine.com</small>		SHEET
		DWG NO. 316-2-3

REV.	DESCRIPTION



Engine Deck  
 -Tran to FT  
 -Full Width

Marks for Deck Stringers  
 Bottom Side  
 Intercostal, Snipe Ends 45°

3/8" Gap, Typ.

COCKPIT DECK LAYOUT

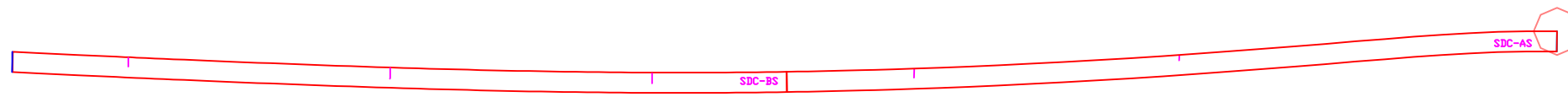
24'x8' BWDB

For: Winninghoff Boats

SCALE 1/2" = 1'	DES/DWN WAL	DATE 9/10/08
SHEET		DWG NO. 316-2-4

REV.	DESCRIPTION

**Response Marine, Inc.**  
 Newburyport, MA www.responsemarine.com



SIDE DECKS & COAMINGS

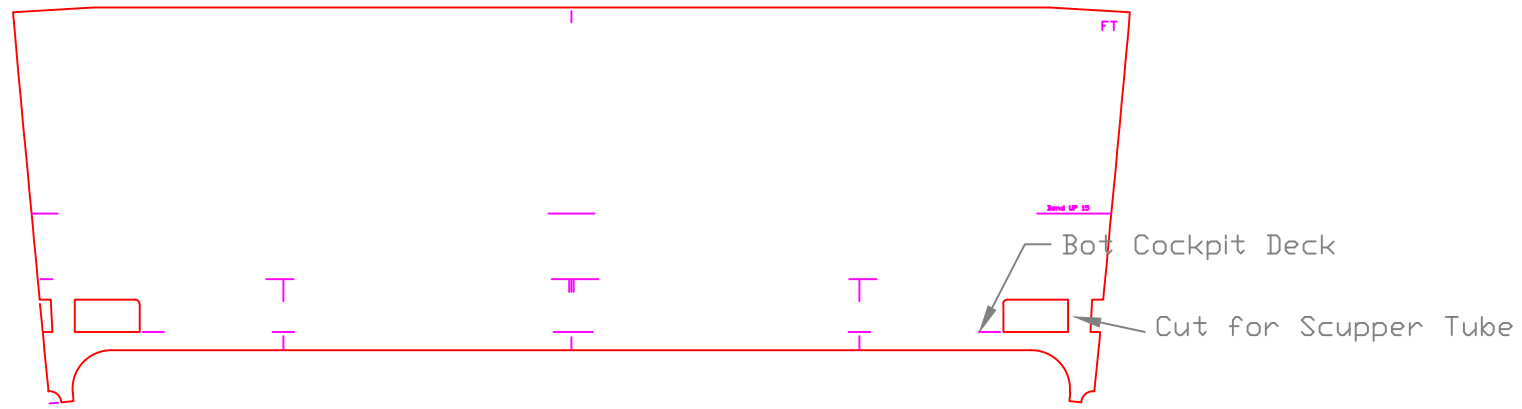
24'x8' BWDB

For: Winninghoff Boats

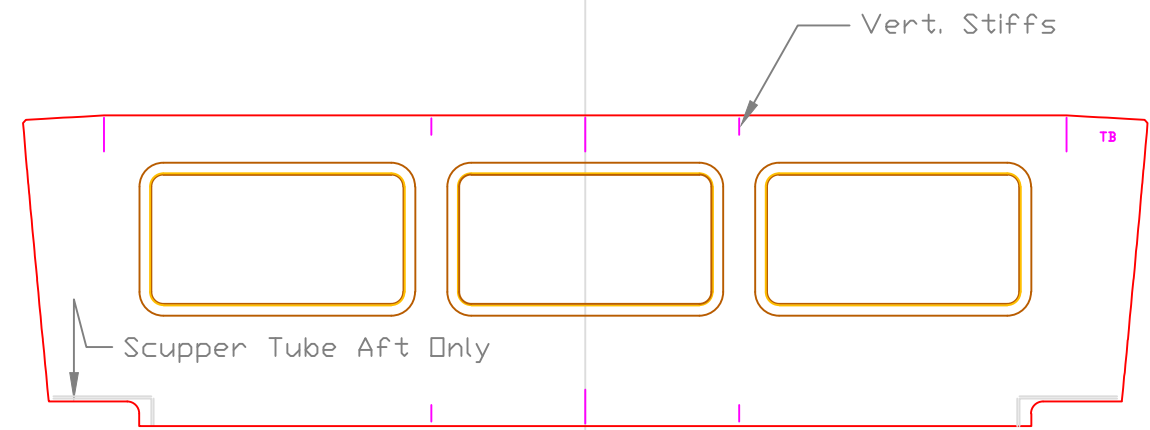
SCALE 1/2" = 1'	DES/DWN WAL	DATE 9/10/08
--------------------	----------------	-----------------

REV.	DESCRIPTION

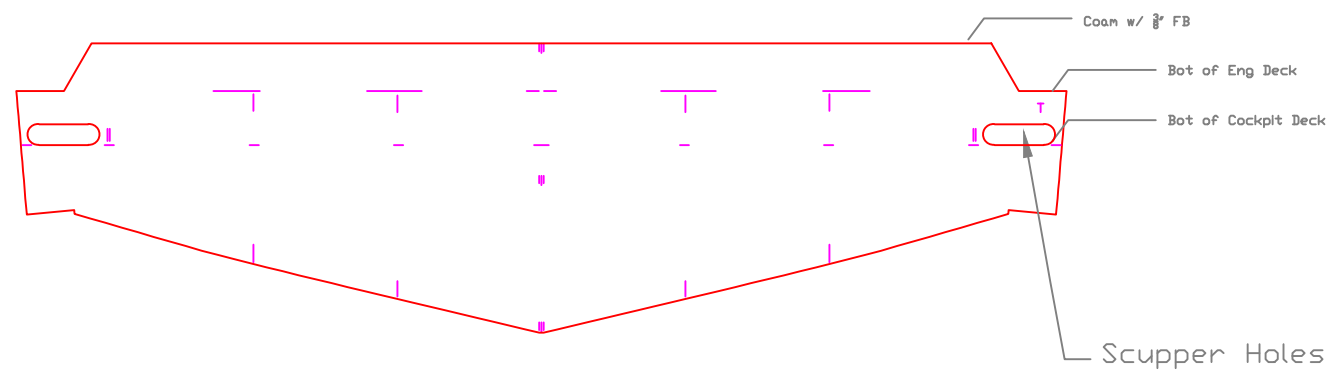
<b>Response Marine, Inc.</b>	SHEET
<small>Newport, MA www.responsemarine.com</small>	DWG NO. 316-2-5



**False Transom**



**Transom Bhd**



**Transom**

TRANSOM 7 TRANSOM BHD5

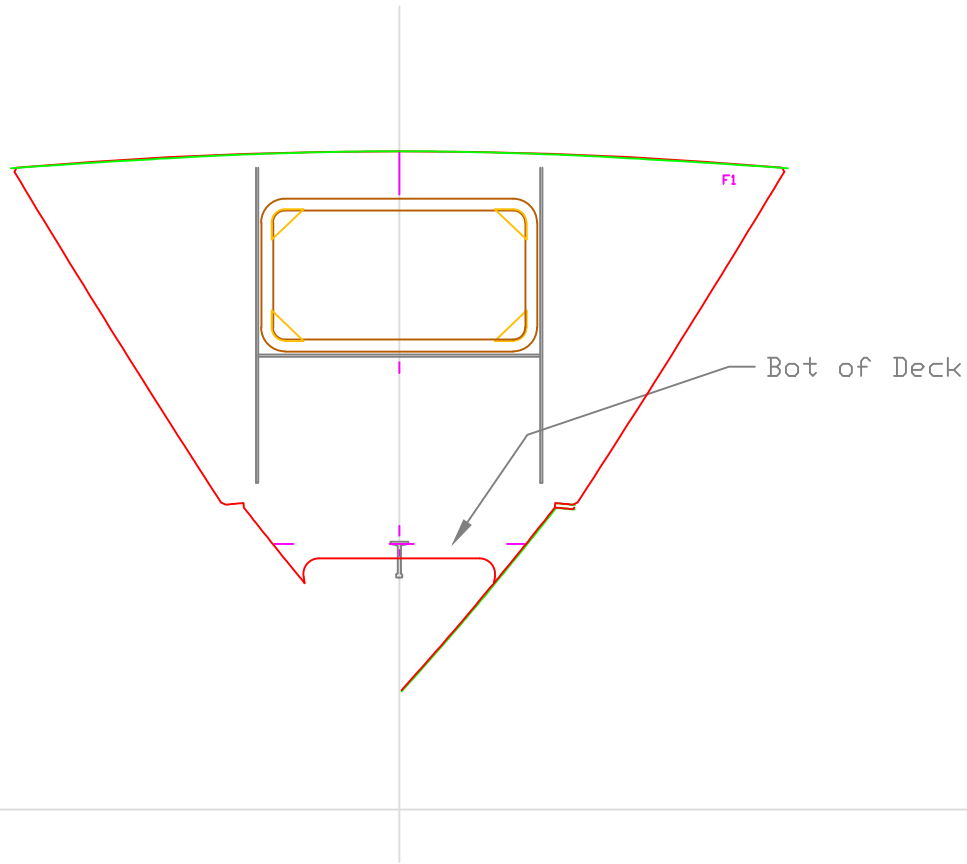
24'x8' BWDB

For: Winninghoff Boats

SCALE 1/2" = 1'	DES/DWN WAL	DATE 9/10/08
<b>Response Marine, Inc.</b> <small>Newburyport, MA www.responsemarine.com</small>		SHEET DWG NO. 316-2-6

REV. DESCRIPTION





FRAME 1

24'x8' BWDB

For: Winnighoff Boats/ Ballestra

SCALE

3/4" = 1"

DES/DWN

WAL

DATE

9/10/08

SHEET

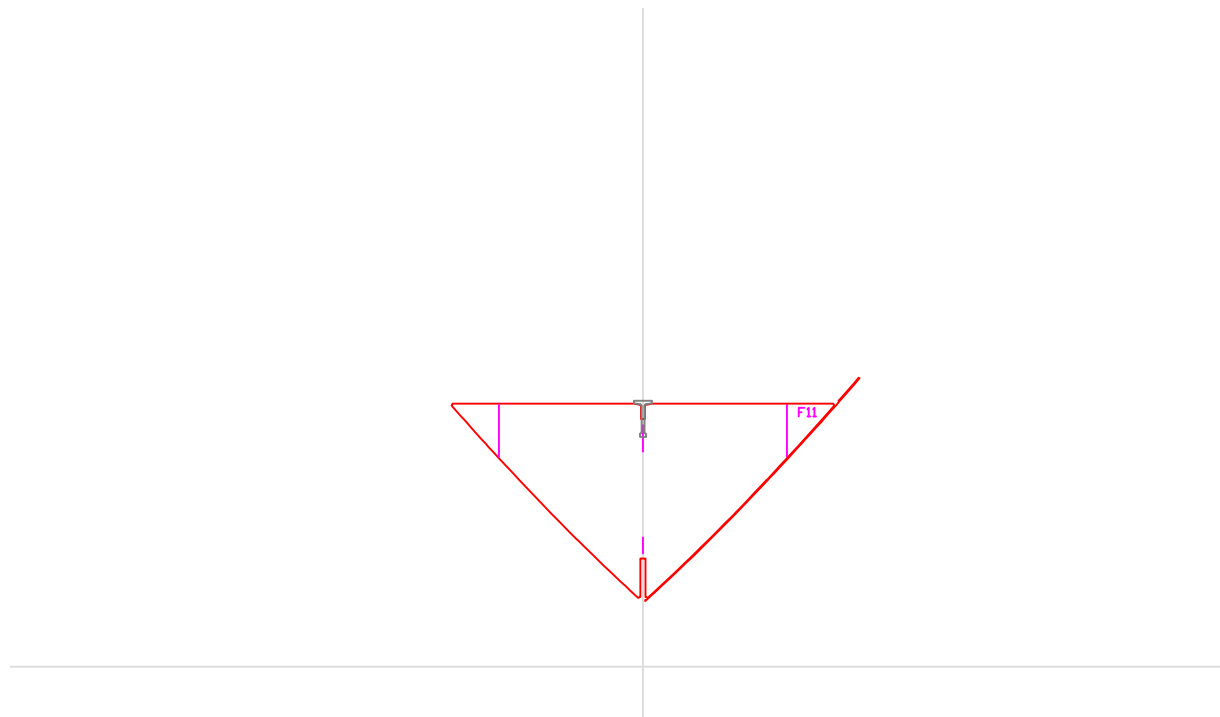
DWG NO.  
316-F-1

REV.

DESCRIPTION

**Response Marine, Inc.**

Newburyport, MA www.responsemarine.com



FRAME 11

24'x8' BWDB

For: Winnighoff Boats/ Ballestra

SCALE

3/4" = 1"

DES/DWN

WAL

DATE

9/10/08

SHEET

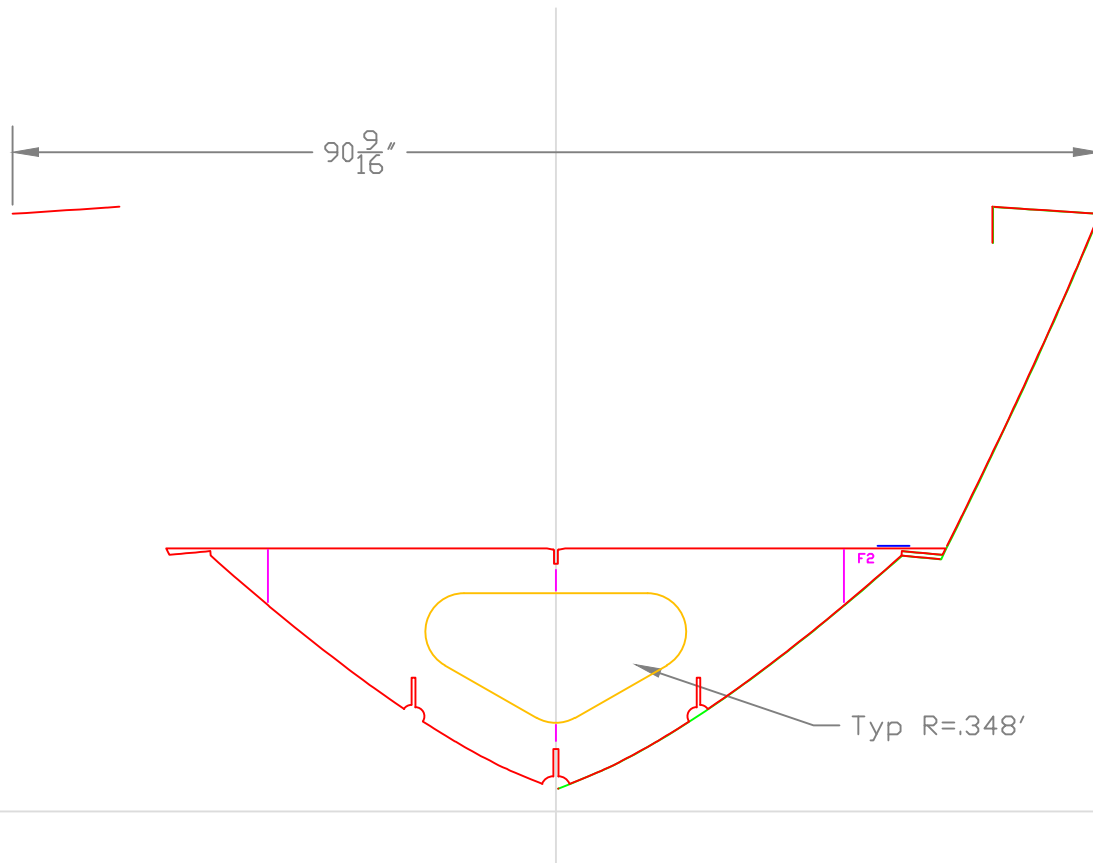
DWG NO.  
316-F-11

REV.

DESCRIPTION

**Response Marine, Inc.**

Newburyport, MA [www.responsemarine.com](http://www.responsemarine.com)



FRAME 2

24'x8' BWDB

For: Winnihoff Boats/ Ballestra

SCALE

3/4" = 1'

DES/DWN

WAL

DATE

9/10/08

SHEET

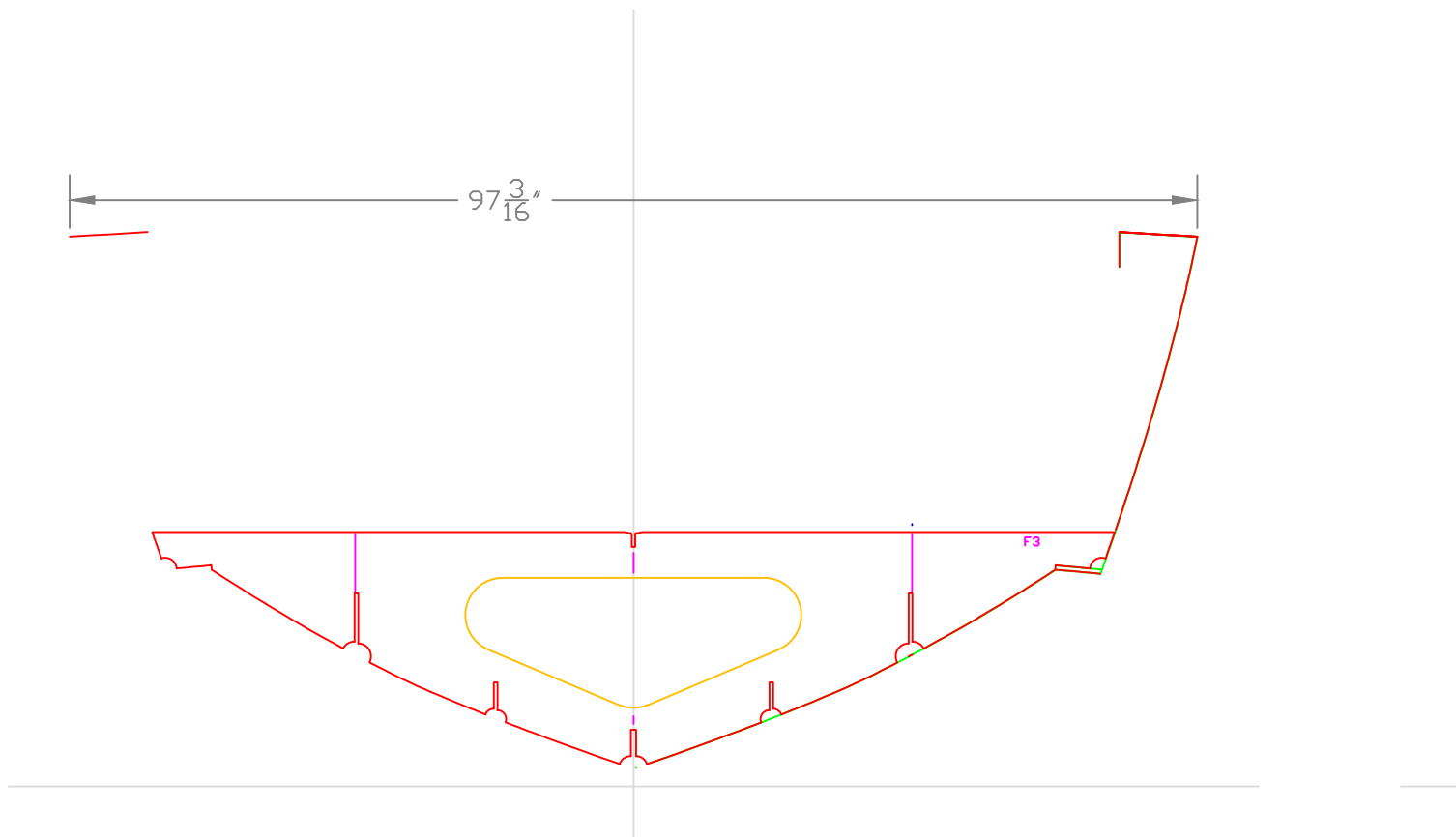
DWG NO.  
316-F-2

REV.

DESCRIPTION

**Response Marine, Inc.**

Newburyport, MA, www.responsemarine.com



FRAME 3

24'x8' BWDB

For: Winnihoff Boats/ Ballestra

SCALE

3/4" = 1"

DES/DWN

WAL

DATE

9/10/08

SHEET

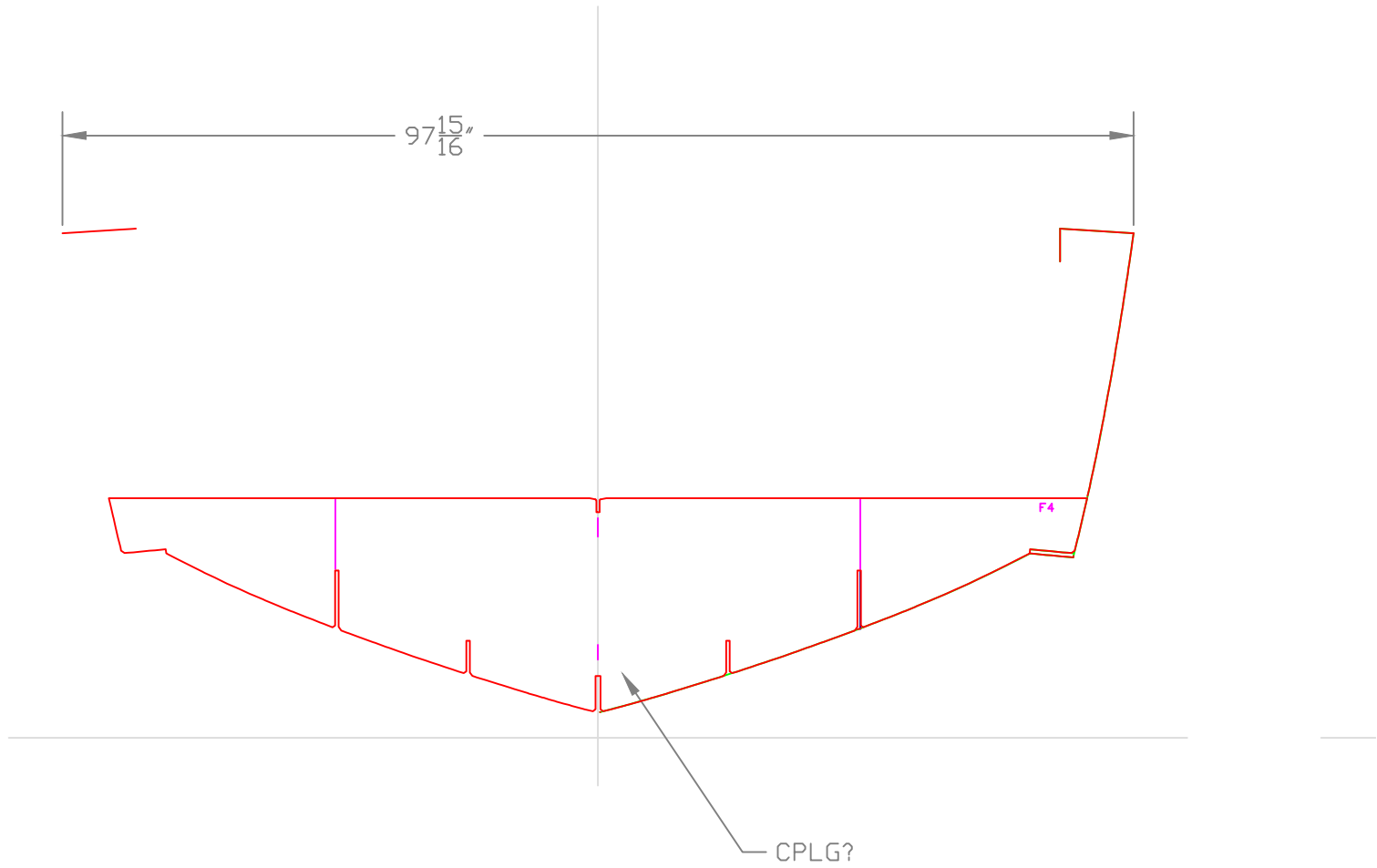
DWG NO.  
316-F-3

REV.

DESCRIPTION

**Response Marine, Inc.**

Newburyport, MA www.responsemarine.com



FRAME 4

24'x8' BWDB

For: Winnihoff Boats/ Ballestra

SCALE

3/4" = 1"

DES/DWN

WAL

DATE

9/10/08

SHEET

DWG NO.  
316-F-4

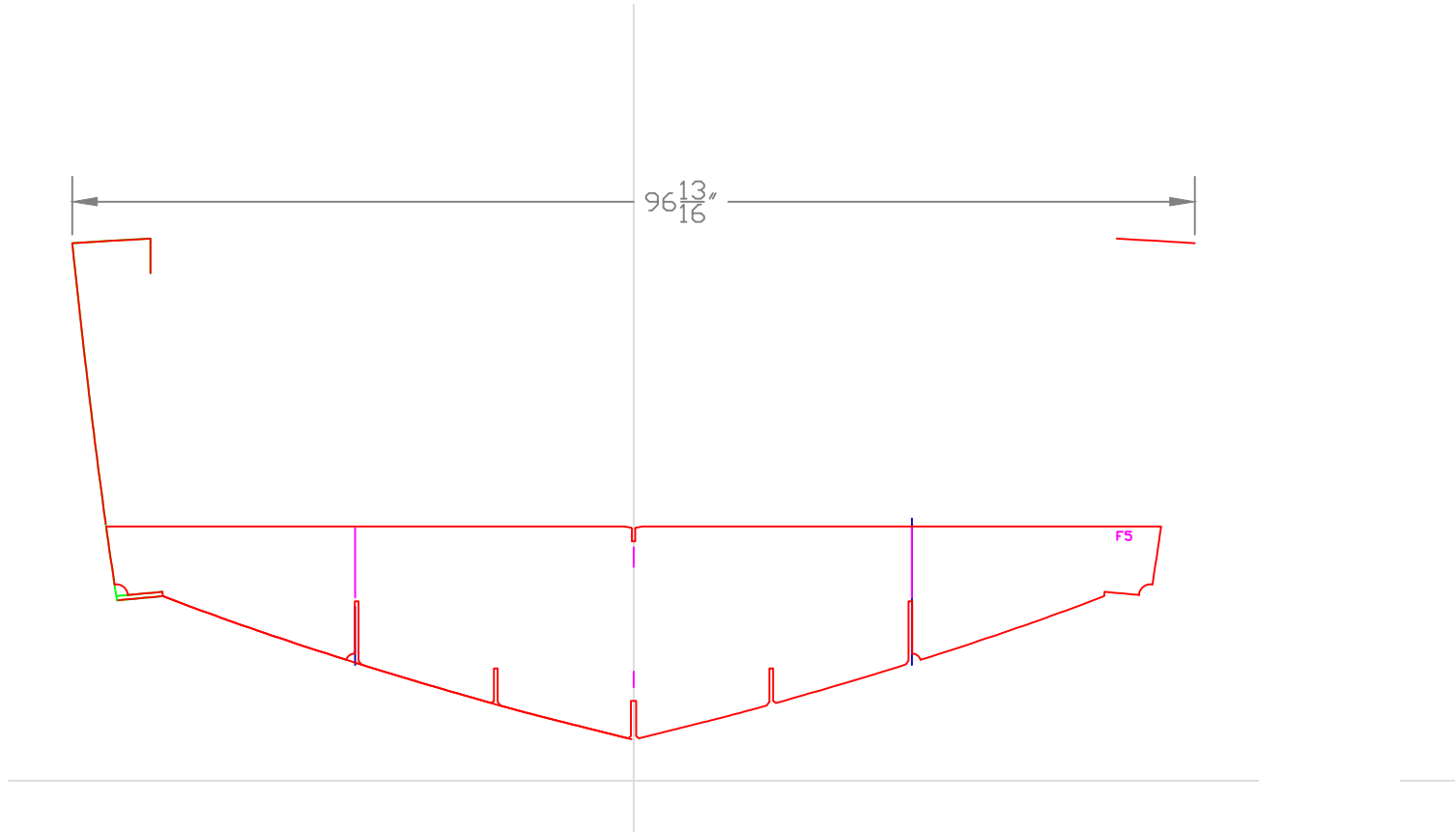
**Response Marine, Inc.**

Newburyport, MA www.responsemarine.com

REV.

DESCRIPTION

REV.	DESCRIPTION



FRAME 5

24'x8' BWDB

For: Winnighoff Boats/ Ballestra

SCALE 3/4" = 1"	DES/DWN WAL	DATE 9/10/08
--------------------	----------------	-----------------

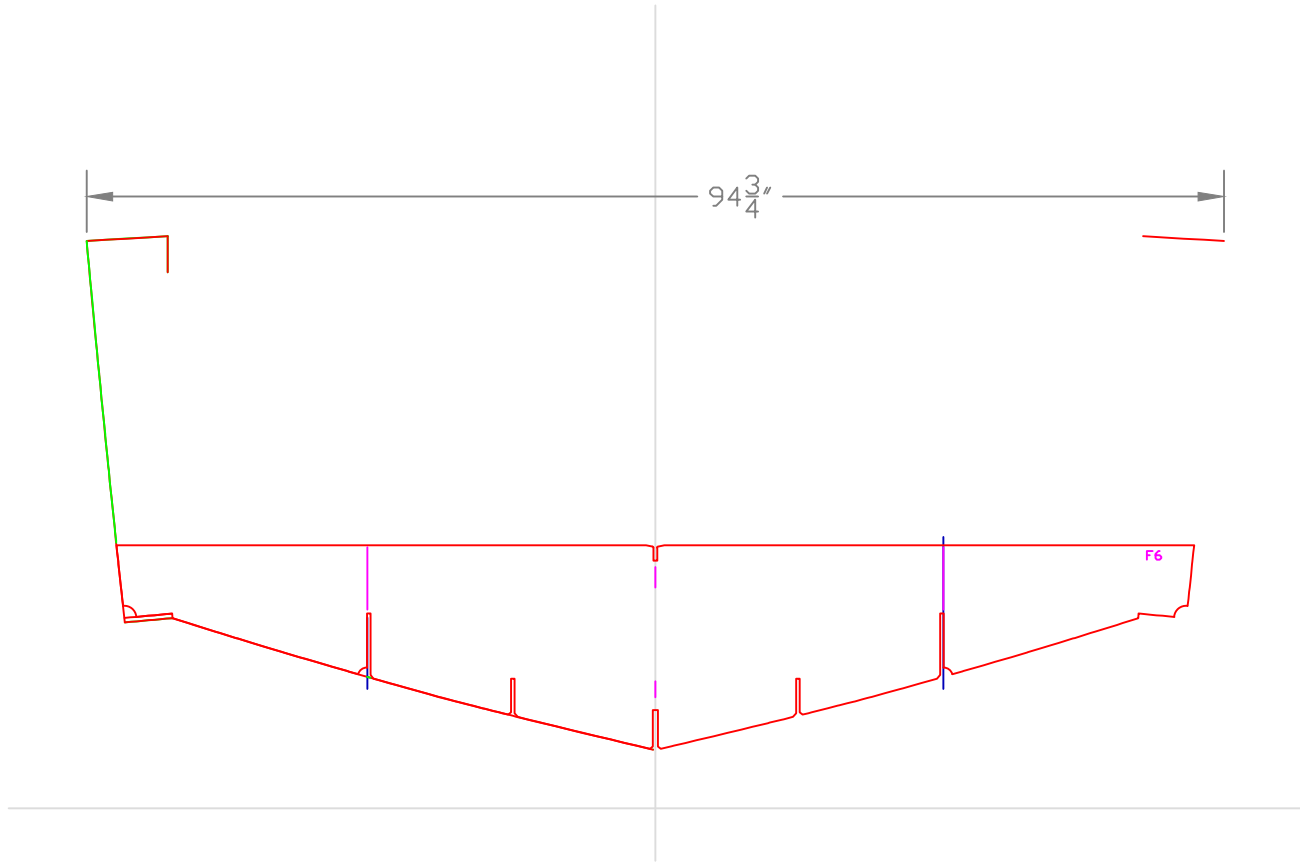
**Response Marine, Inc.**

Newburyport, MA www.responsemarine.com

SHEET

DWG NO.  
316-F-5

REV.	DESCRIPTION
------	-------------



FRAME 6

24'x8' BWDB

For: Winnighoff Boats/ Ballestra

SCALE 3/4" = 1"	DES/DWN WAL	DATE 9/10/08
--------------------	----------------	-----------------

**Response Marine, Inc.**

Newburyport, MA www.responsemarine.com

SHEET

DWG NO.  
316-F-6

REV.	DESCRIPTION