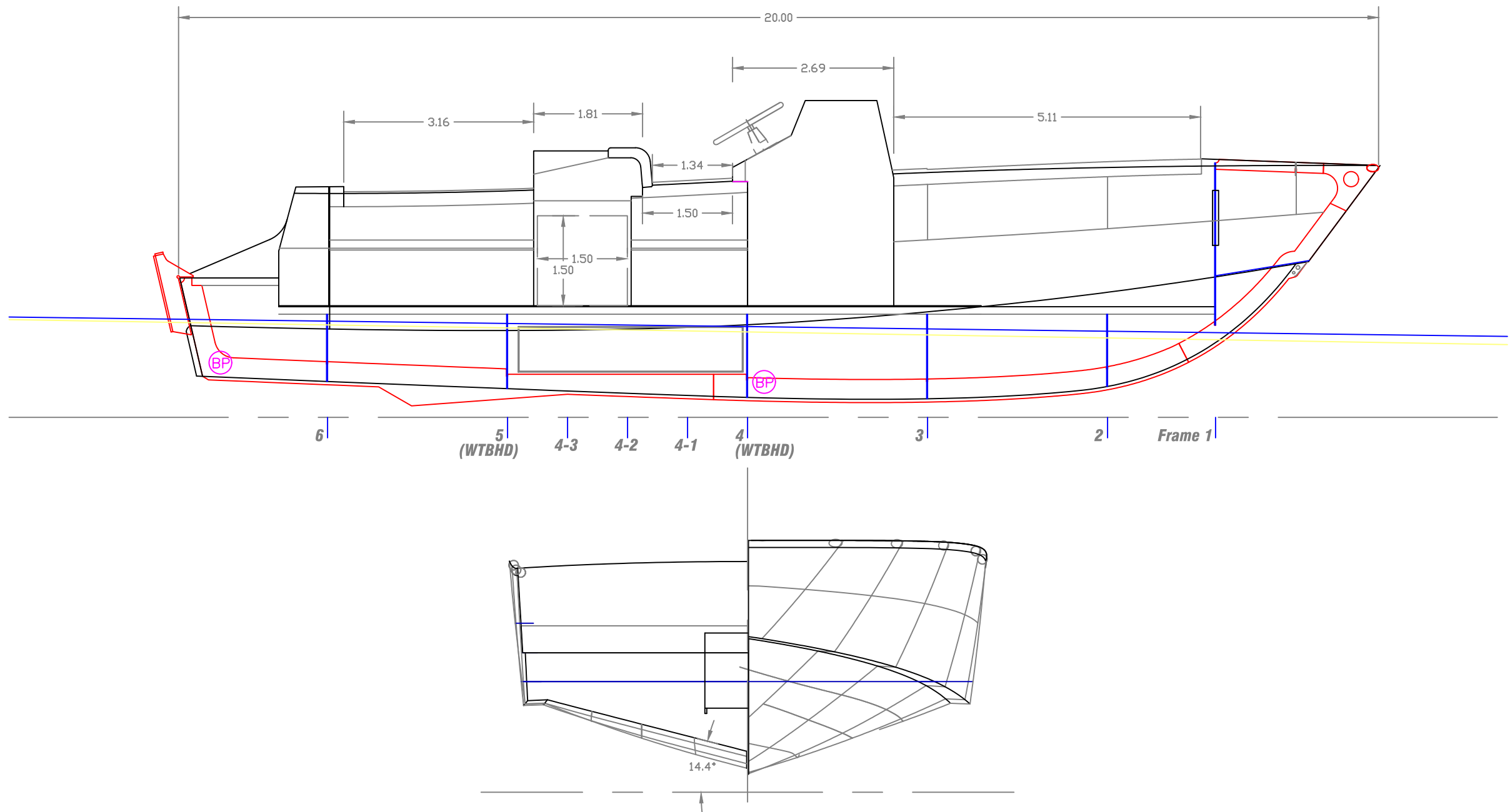


20' x 8' Skiff		
PROFILE & PLAN		
SCALE 1/2" = 1'	DES/DWN WAL	DATE 5/29/17
<b>Response Marine, Inc.</b> Newburyport, MA, <a href="http://www.responsemarine.com">www.responsemarine.com</a>		SHEET DWG NO. 559-1

REV.	DESCRIPTION



20' x 8' Skiff		
IB PROFILE & BODY PLAN		
SCALE 1/2" = 1'	DES/DWN WAL	DATE 5/29/17
<b>Response Marine, Inc.</b>		SHEET
Newburyport, MA, <a href="http://www.responsemarine.com">www.responsemarine.com</a>		DWG NO. 559-2

REV.	DESCRIPTION

DRAWING LIST

<b>Design</b>	<b>Dwg</b>	<b>Description</b>	<b>Customer</b>	<b>Date</b>
WMW 20' X 8'1"		Center Console Skiff		
559	-1	Outboard Profile & Plan		5/29/17
	-2	Inboard Profile & Body Plan		5/29/17
	2-1	Keel Layout		5/29/17
	2-2	Girder Layout		5/29/17
	2-3A	Bottom Layout		5/29/17
	2-3B	Side Layout		5/29/17
	2-4	Cockpit Sole Layout		5/29/17
	2-5	Engine Deck & Anc Lkr Bottom		5/29/17
	2-6	Scupper Tubes		5/29/17
	2-7	False Transom		5/29/17
	2-8	Transom		5/29/17
	2-9	Side Decks		5/29/17
	2-10	Transom Bulkhead		5/29/17
	2-11	Engine Mount Bracket		5/29/17
	C-1	Typical Skin Joints		5/29/17
	3-1	Fuel Tank		5/29/17
	3-2	Ullage Fuel Tank		5/29/17
	4-1	Console		5/29/17
	4-2	Leaning Post- Parts		5/29/17
	4-3	Leaning Post- Section		5/29/17
	F0	Frame 0		5/29/17
	F1	Frame 1		5/29/17
	F2	Frame 2		5/29/17
	F3	Frame 3		5/29/17
	F4	Frame 4		5/29/17
	F41	Frames 41 & 43		5/29/17
	F42	Frame 42		5/29/17
	F5	Frame 5		5/29/17
	F6	Frame 6		5/29/17

Response Marine,

NC Parts for #559 WMW 20'

File: RM\Ids\Viking\Deriv\559 WMW

Revised: 5/30/17

Print Date: 5/30/17

**1/8" 5052 Parts**

<u>Part #</u>	<u>Pieces</u>	<u>Description</u>	<u>Bending</u>	<u>Bending Info</u>
LP-1	1	Leaning Post, Sides& Aft	Y	On Marks
LP-2	1	Leaning Post, Front Bottom	Y	On Marks
LP-3	1	Leaning Post, Front Top	Y	On Marks
LP-4	1	Leaning Post, Lid Front Gutter	Y	On Marks
LP-5	1	Leaning Post, Shelf		
LP-6	1	Leaning Post, Lid	Y	On Marks
CS-P	1	Console Side, Port		
CS-S	1	Console Side, Stbd		
CF	1	Console Front	Y	On Marks
CB	1	Console Back	Y	On Marks
CT	1	Console Top	Y	On Marks
CS-AP	1	Console Side, Angled Jog, Port		
CS-AS	1	Console Side, Angled Jog, Stbd		
J-CS	2	Jig, Console Side		
ST-P	1	Scupper Tube, Port. Tbhd to Tran	Y	On Marks
ST-S	1	Scupper Tube, Stbd, Tbhd to Tran	Y	On Marks
UT-1	1	Ullage Tank, Front/Top/Bot	Y	As Marked
UT-2	1	Ullage Tank, Back/Sides	Y	As Marked
	19	Total Pieces (1/8")		

**3/16" 5083/86 Parts**

<u>Part #</u>	<u>Pieces</u>	<u>Description</u>	<u>Bending</u>	<u>Bending Info</u>
ALB	1	Anchor Locker Bottom		
CSS	4	Console Side Stiffeners		
DB-AP	1	Deck Body, F1-F4, Port		
DB-AS	1	Deck Body, F1-F4, Stbd		
DB-BP	1	Deck Body, OB, F4-F5, Port		
DB-BS	1	Deck Body, OB, F4-F5, Stbd		
DB-CP	1	Deck Body, F5-Tran, Port		
DB-CS	1	Deck Body, F5-Tran, Stbd		
DB-D	1	Deck Body, CL, F4-F5		

DB-EP	1	Deck Body, Transom, Port		
DB-ES	1	Deck Body, Transom, Stbd		
DP-5	2	Deck Plate Cover		
DP-5R	2	Deck Plate Ring		
F0	1	Frame 0, Foredeck/TS		
F1	1	Frame 1		
F2	1	Frame 2		
F2-U	1	Frame 2, Upper		
F3	1	Frame 3, Main Lower		
F3-U	1	Frame 3, Upper		
F4	1	Frame 4		
F4-P	1	Frame 4, Upper, Port		
F4-S	1	Frame 4, Upper, Stbd		
F41	2	Frame 41, Between Girders		
F42-P	1	Frame 42, Port		
F42-S	1	Frame 42, Stbd		
F42-D	1	Frame 42,, Deck Btwn Girders		
F43	2	Frame 43, Between Girders		
F5	1	Frame 5		
F6	1	Frame 6		
FDC-P	1	Side Deck Coaming, Port	Y	Bump on Marks
FDC-S	1	Side Deck Coaming, Stbd	Y	Bump on Marks
FT-1	2	Fuel Tank Ends		
FT-2	1	Fuel Tank Bottom CL		
FT-3	2	Fuel Tank Bottom Slants		
FT-4	2	Fuel Tank Sides		
FT-5	1	Fuel Tank, Transverse Baffle		
FT-6	1	Fuel Tank, Long'l Baffle		
FT-7	1	Fuel Tank Top		
G-P	1	Girder, Tran-F4, Port		
G-S	1	Girder, Tran-F4, Stbd		
SD-P	1	Side Deck, Port		
SD-S	1	Side Deck, Stbd		
FTR-U	1	False Transom		
FTR-L	1	False Transom		
SDC-P	1	Side Deck Coaming, Port		
SDC-S	1	Side Deck Coaming, Stbd		
TBHD	1	Transom Bhd		
TD	1	Transom Deck		
TDC	1	Transom Deck Coaming		
TS-P	1	Topsides, Port		
TS-S	1	Topsides, Stbd		
TSL-BP	1	Topside Stringer, Aft Port, F4-False Tran		

TSL-BS 1 Topside Stringer, Aft Stbd, F4-False Tran

63 Total Pieces (3/16")

### **1/4" 5083/86 Parts**

<u>Part #</u>	<u>Pieces</u>	<u>Description</u>
B-P	1	Bottom Plate, Port
B-S	1	Bottom Plate, Stbd
BS1-P	1	Bottom Longitudinal 1, Fwd, Port
BS1-S	1	Bottom Longitudinal 1, Fwd, Stbd
BS2-P	1	Bottom Longitudinal 2, Fwd, Port
BS2-S	1	Bottom Longitudinal 2, Fwd, Stbd
BS3-AP	1	Bottom Longitudinal 3, Fwd, Port
BS3-AS	1	Bottom Longitudinal 3, Fwd, Stbd
BS3-BP	1	Bottom Longitudinal 3, Aft, Port
BS3-BS	1	Bottom Longitudinal 3, Aft, Stbd
C-P	1	Chine, Port
C-S	1	Chine, Stbd
TR	1	Transom (20 ft Boat)
TR-K	2	Transom Knee @ BS1
TR-S	2	Transom Stiffener, Transverse
TSL-AP	1	Topside Stringer, Fwd Port, Stem to F4
TSL-AS	1	Topside Stringer, Fwd Stbd Stem to F4

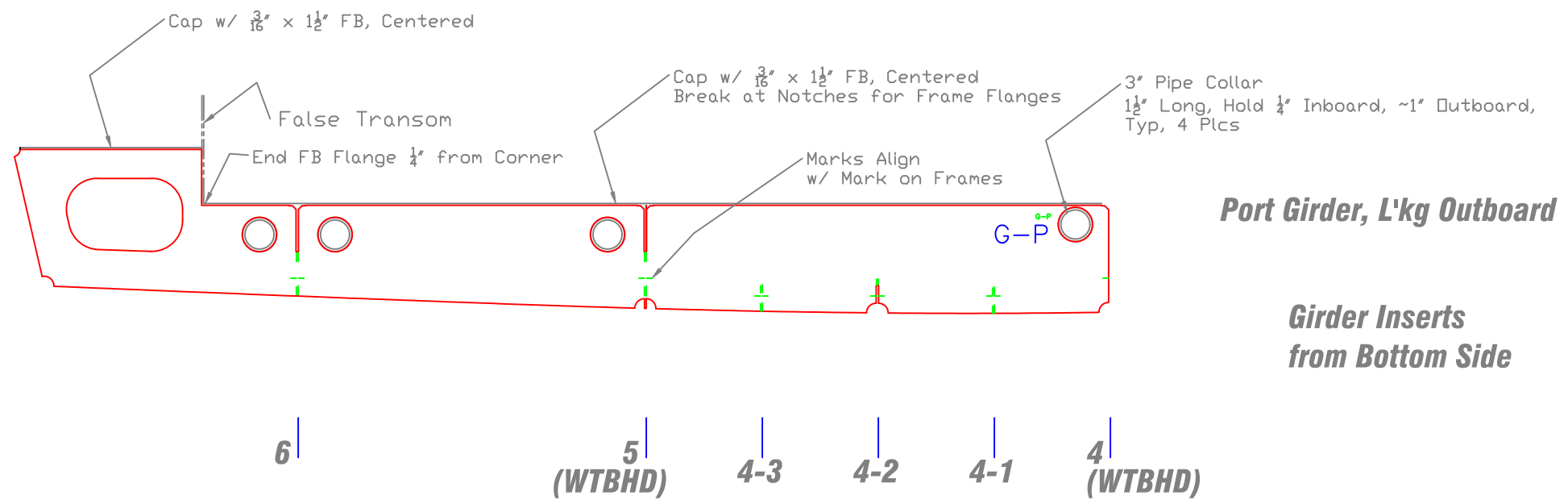
19 Total Pieces

### **3/8" 5083/86 Parts**

<u>Part #</u>	<u>Pieces</u>	<u>Description</u>
EB-1	1	Engine Bracket, Transom
EB-2	2	Engine Bracket, Sides
EB-3	1	Engine Bracket, Lip
K-A	1	Keel, Fwd
K-B	1	Keel, Mid fwd
K-D	1	Keel, Foredeck CL
K-C	1	Keel, Aft

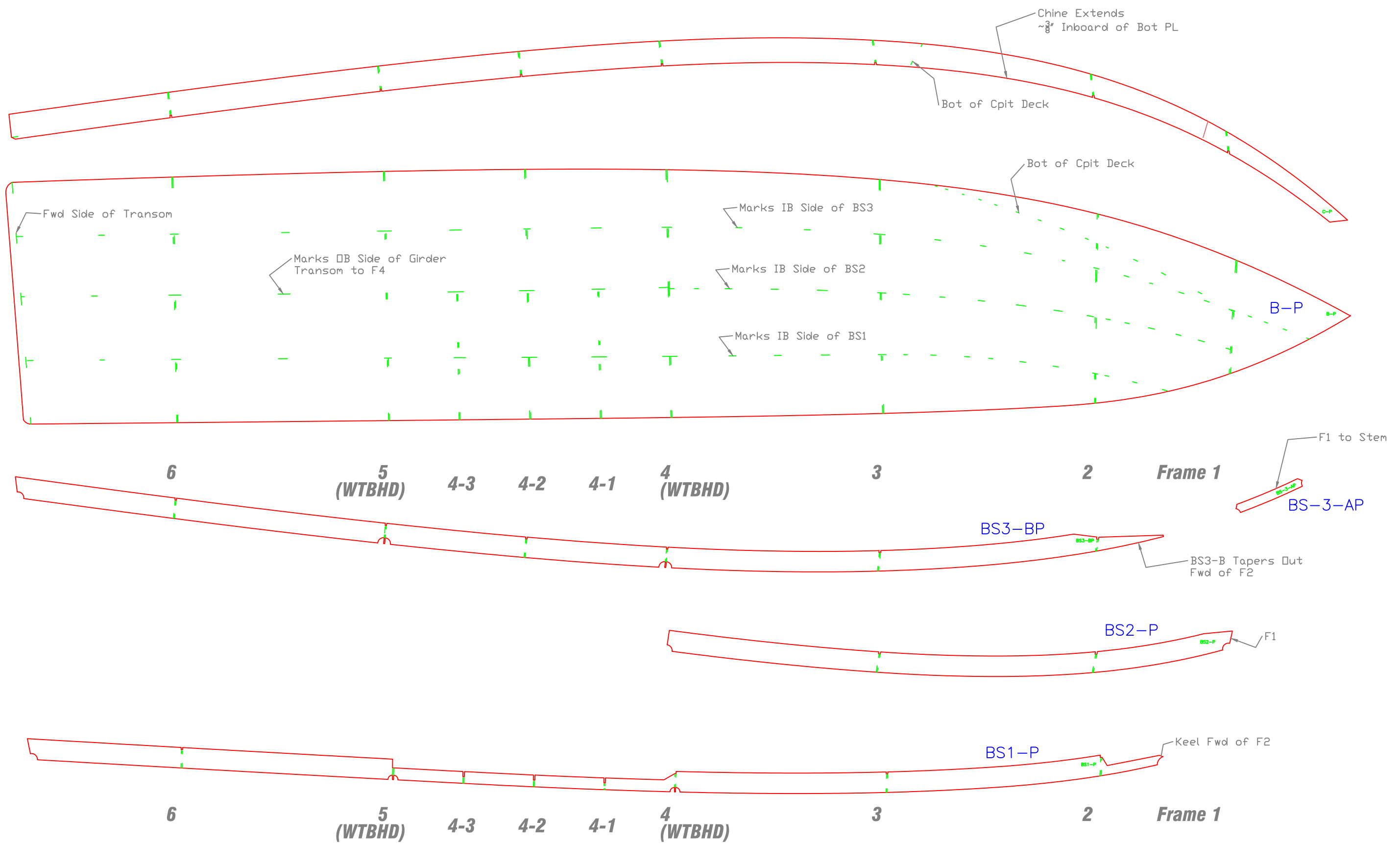
8 Total 3/8" parts

**109 Total Cut Parts**



20' x 8' Skiff		
GIRDER LAYOUT		
SCALE 3/4" = 1'	DES/DWN WAL	DATE 5/29/17
<b>Response Marine, Inc.</b>		SHEET
Newburyport, MA, <a href="http://www.responsemarine.com">www.responsemarine.com</a>		DWG NO. 559-2-2

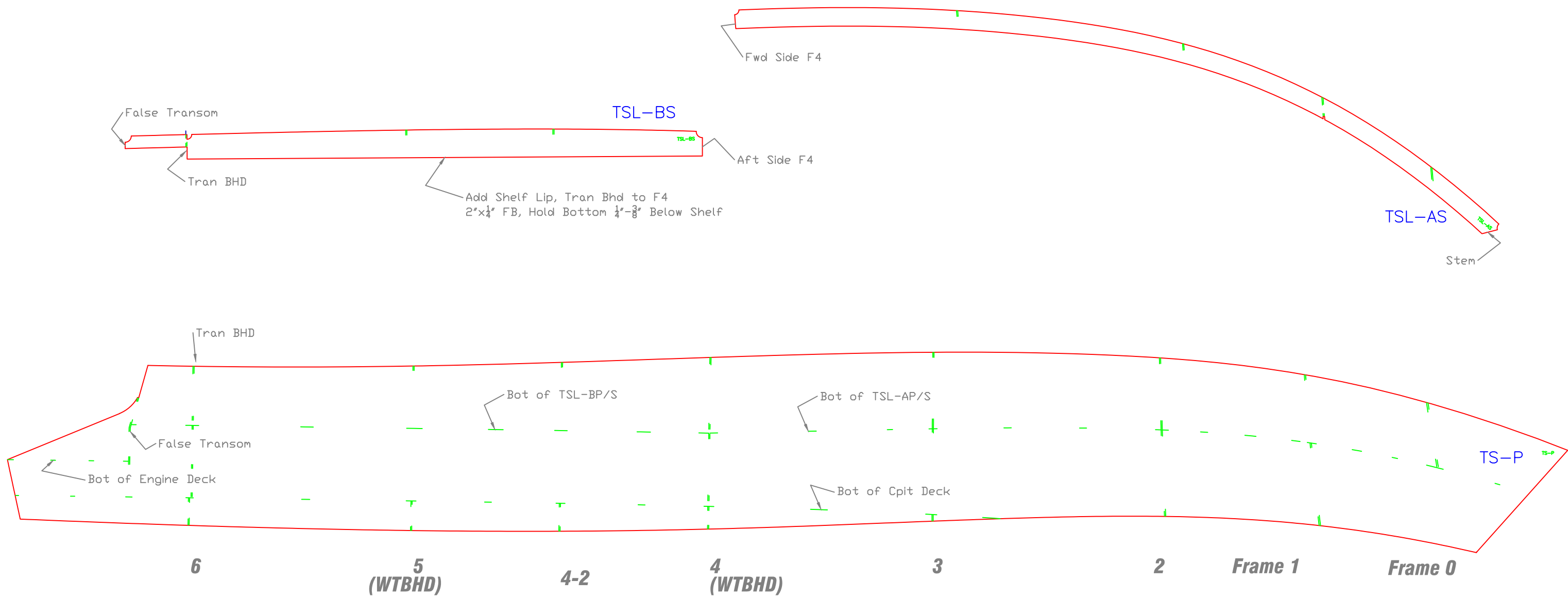
REV.	DESCRIPTION



20' x 8' Skiff		
BOTTOM LAYOUT		
SCALE 3/4" = 1'	DES/DWN WAL	DATE 5/29/17
<b>Response Marine, Inc.</b> Newburyport, MA, <a href="http://www.responsemarine.com">www.responsemarine.com</a>		SHEET DWC NO. 559-2-3A

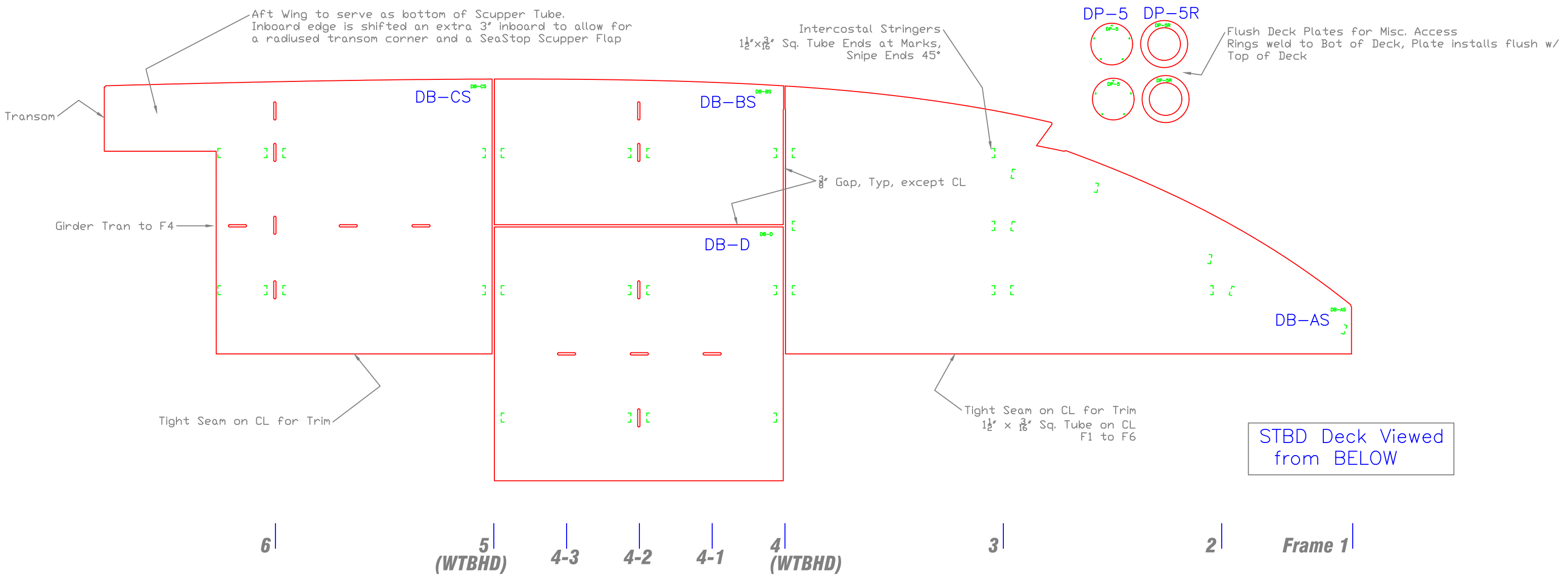
REV.	DESCRIPTION





20' x 8' Skiff		
SIDE LAYOUT		
SCALE 3/4" = 1'	DES/DWN WAL	DATE 5/29/17
<b>Response Marine, Inc.</b> Newburyport, MA, www.responsemarine.com		SHEET DWG NO. 559-2-3B

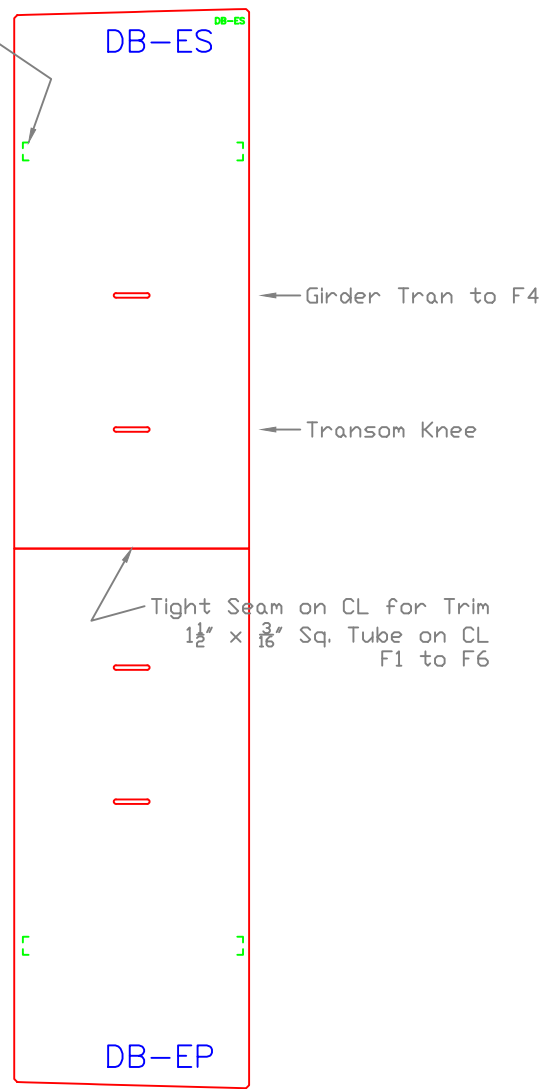
REV.	DESCRIPTION



20' x 8' Skiff		
COCKPIT DECK LAYOUT		
SCALE 3/4" = 1'	DES/DWN WAL	DATE 5/29/17
<b>Response Marine, Inc.</b> Newburyport, MA, www.responsemarine.com		SHEET DWG NO. 559-2-4

REV.	DESCRIPTION

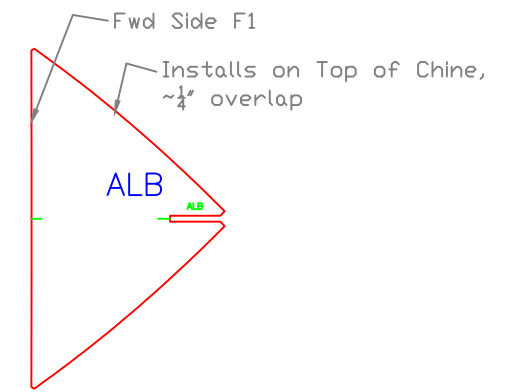
Intercostal Stringers  
 $1\frac{1}{2} \times \frac{3}{16}$  Sq. Tube Ends at Marks,  
 Snipe Ends 45°



Viewed  
 from BELOW

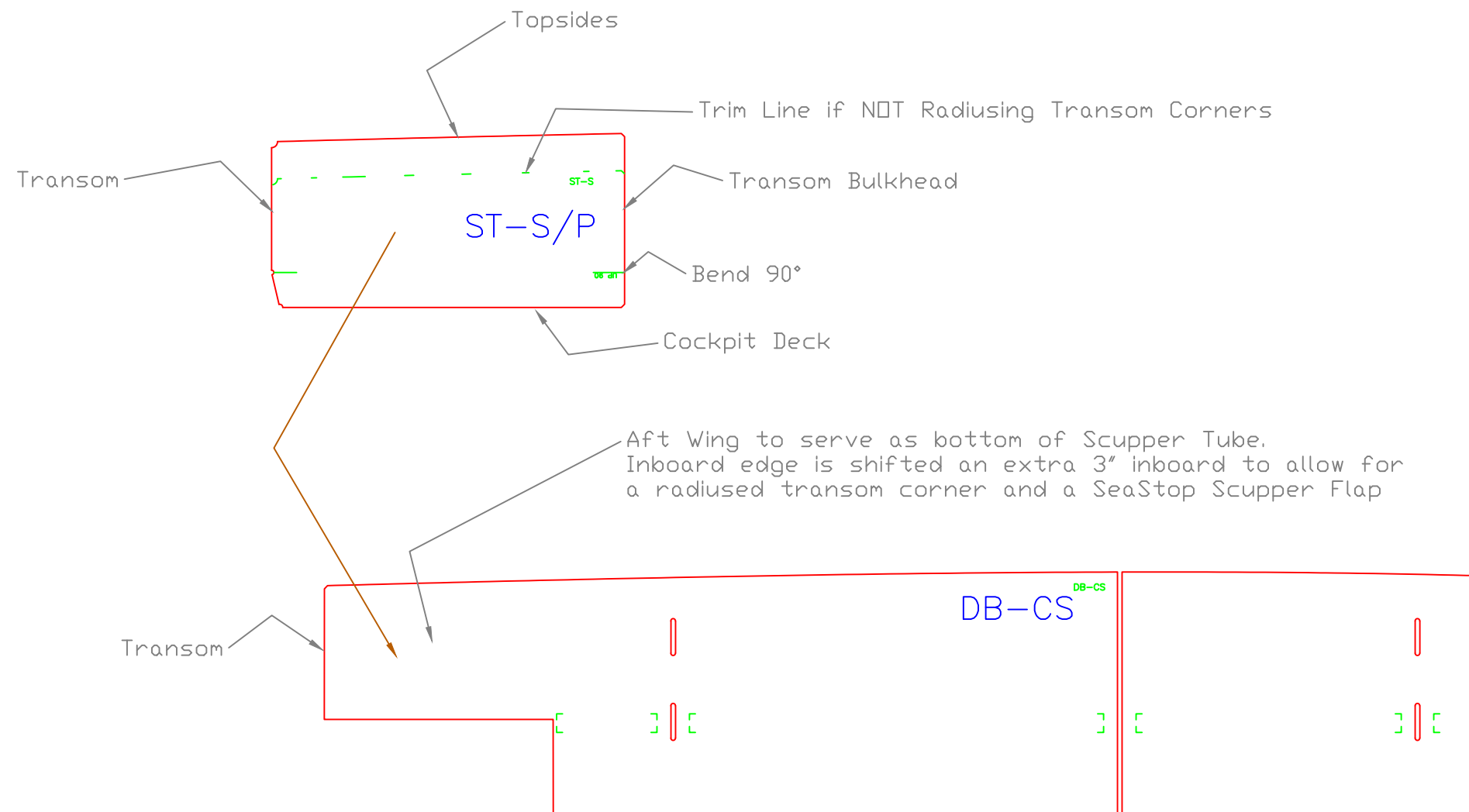
: flush w/

Transom



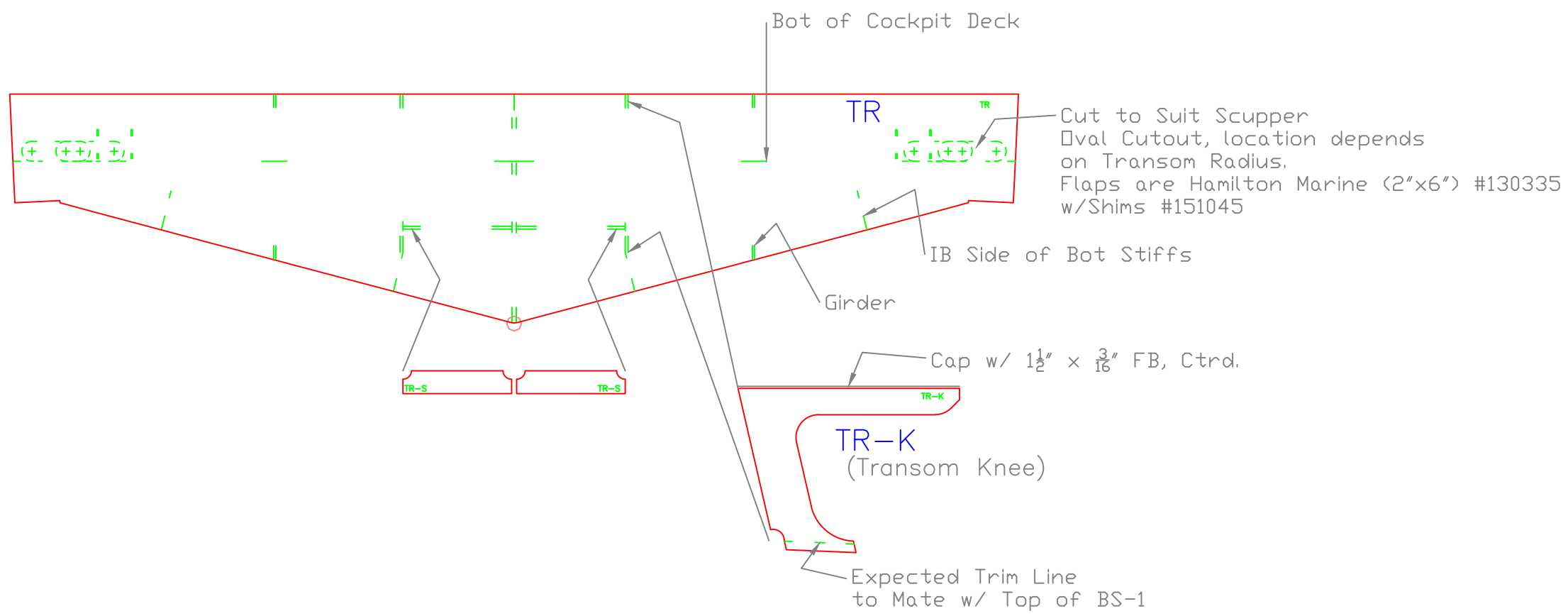
20' x 8' Skiff		
ENGINE DECK & A/L BOT		
SCALE 3/4" = 1'	DES/DWN WAL	DATE 5/29/17
<b>Response Marine, Inc.</b> Newburyport, MA, www.responsemarine.com		SHEET DWG NO. 559-2-5

REV.	DESCRIPTION



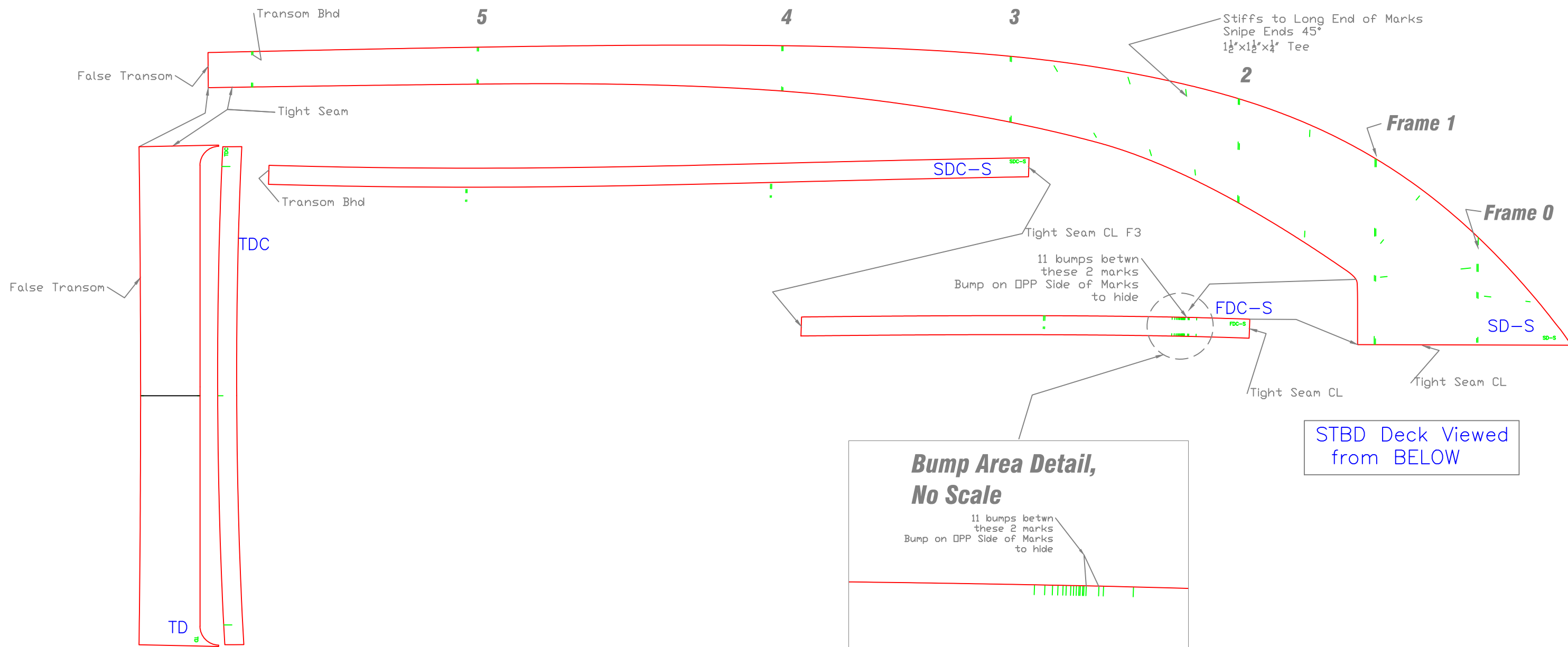
20' x 8' Skiff		
SCUPPER TUBES		
SCALE 1" = 1'	DES/DWN WAL	DATE 5/29/17
<b>Response Marine, Inc.</b> Newburyport, MA, <a href="http://www.responsemarine.com">www.responsemarine.com</a>		SHEET DWG NO. 559-2-6

REV.	DESCRIPTION



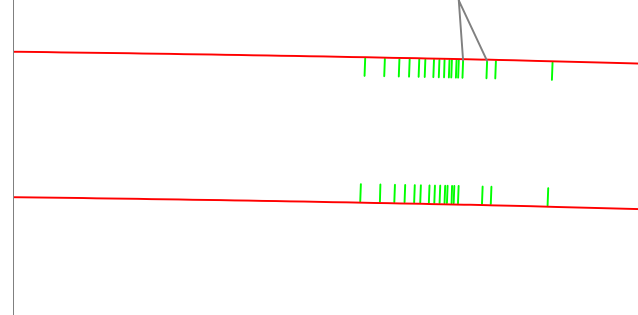
20' x 8' Skiff		
TRANSOM		
SCALE 1" = 1'	DES/DWN WAL	DATE 5/29/17
<b>Response Marine, Inc.</b> Newburyport, MA, <a href="http://www.responsemarine.com">www.responsemarine.com</a>		SHEET DWG NO. 559-2-8

REV.	DESCRIPTION



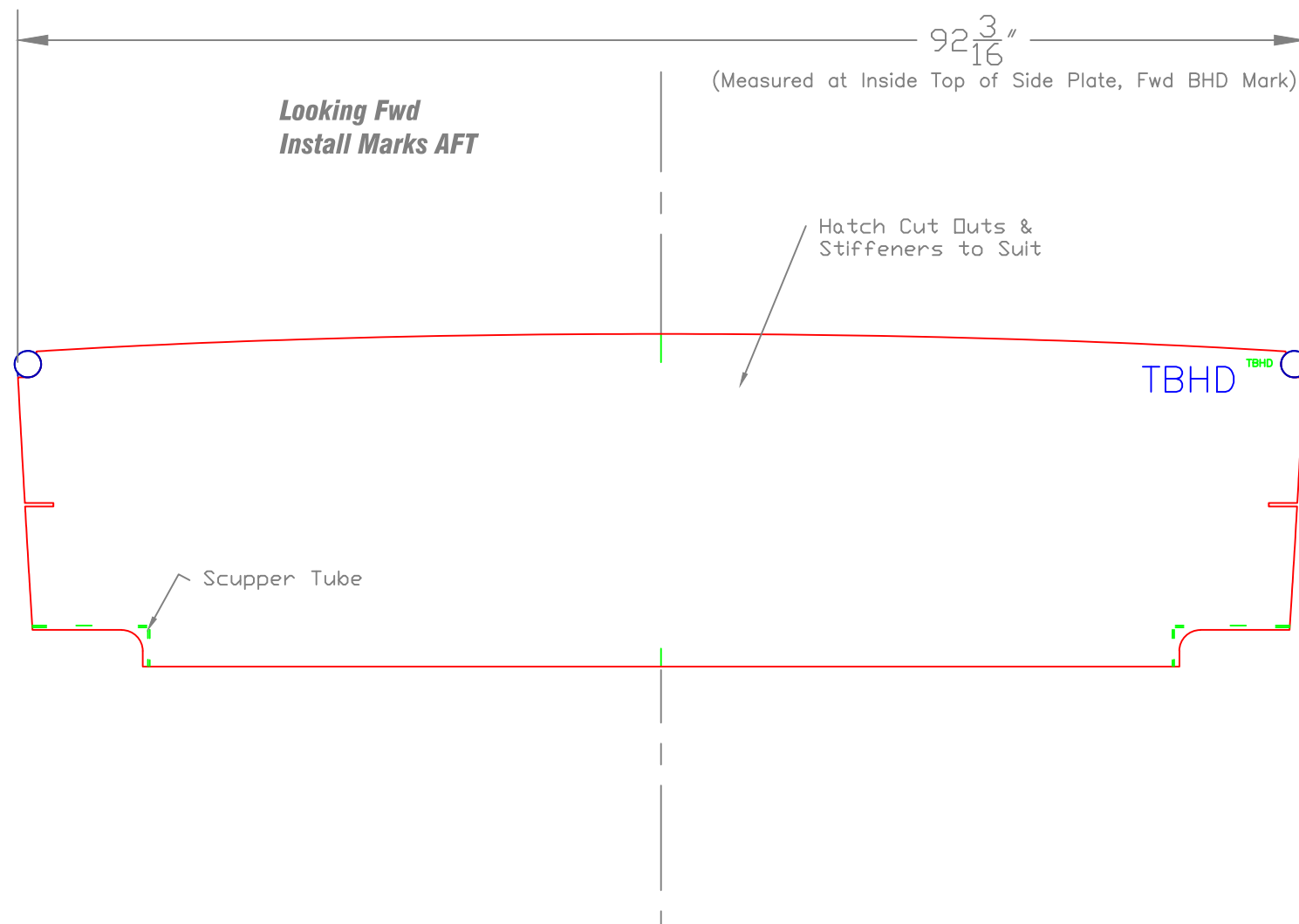
**Bump Area Detail,  
No Scale**

11 bumps betwn  
these 2 marks  
Bump on DPP Side of Marks  
to hide



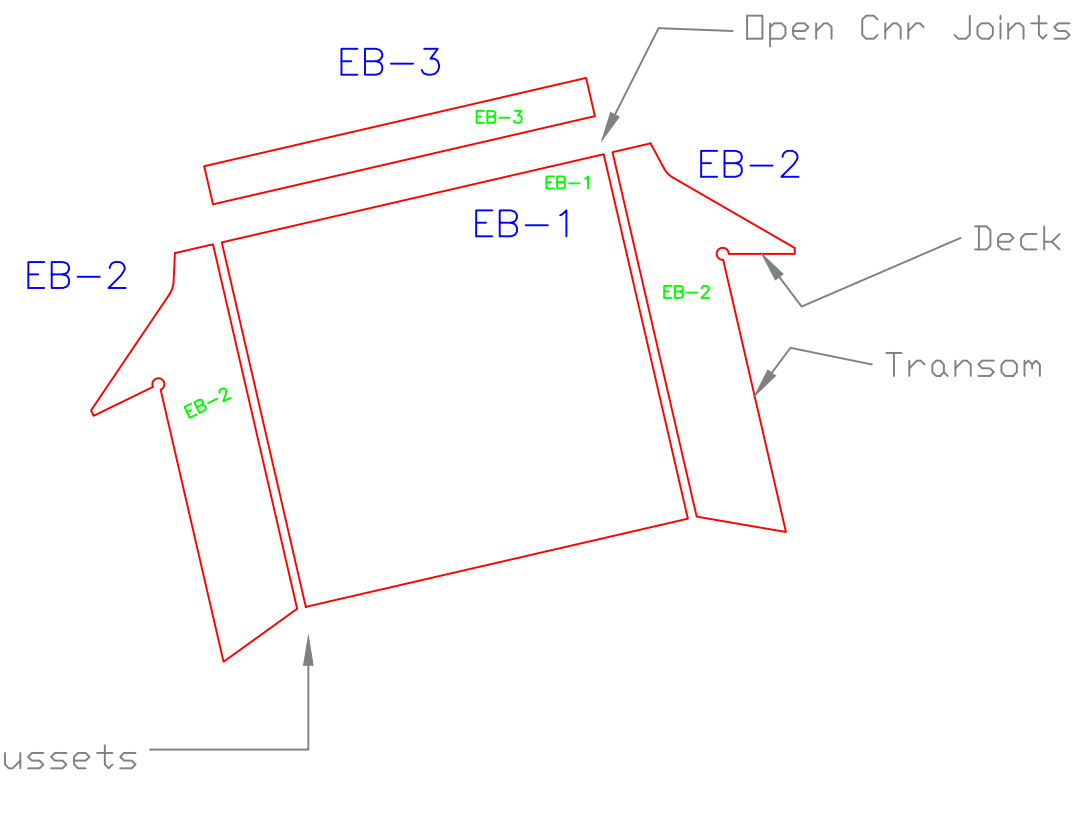
20' x 8' Skiff		
SIDE DECKS		
SCALE 3/4" = 1'	DES/DWN WAL	DATE 5/29/17
<b>Response Marine, Inc.</b> Newburyport, MA, www.responsemarine.com		SHEET DWG NO. 559-2-9

REV.	DESCRIPTION



20' x 8' Skiff		
TRANSOM BULKHEAD		
SCALE 1 1/2" = 1'	DES/DWN WAL	DATE 5/29/17
<b>Response Marine, Inc.</b> Newburyport, MA, <a href="http://www.responsemarine.com">www.responsemarine.com</a>		SHEET DWC NO. 559-2-10

REV.	DESCRIPTION

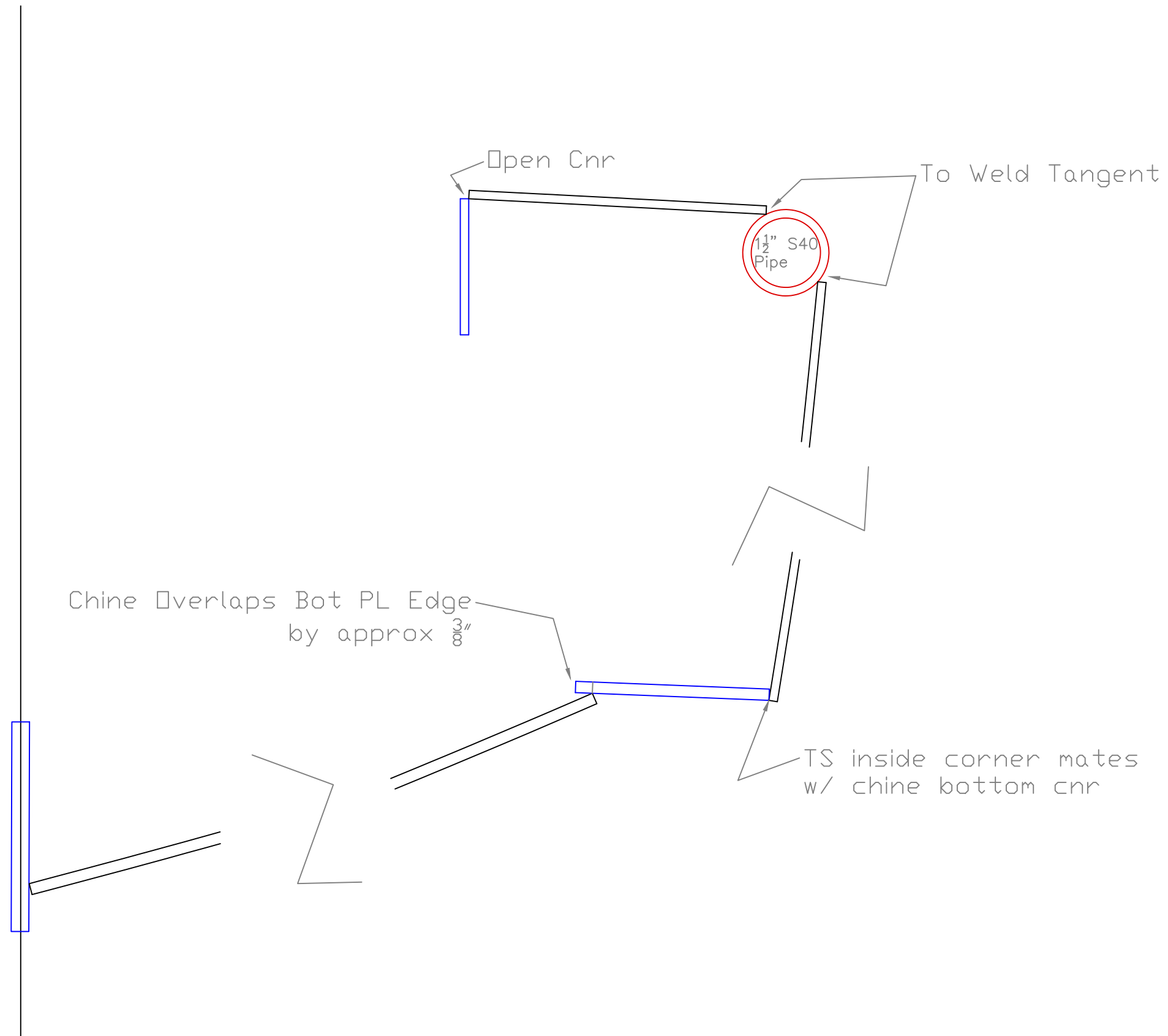


Add hand cut 3" x 1/4" 45° gussets  
at Bot Cnrs.

20' x 8' Skiff		
ENGINE MOUNT BRACKET		
SCALE 1 1/2" = 1'	DES/DWN WAL	DATE 5/29/17
<b>Response Marine, Inc.</b> Newburyport, MA, <a href="http://www.responsemarine.com">www.responsemarine.com</a>		SHEET DWC NO. 559-2-11

REV.	DESCRIPTION

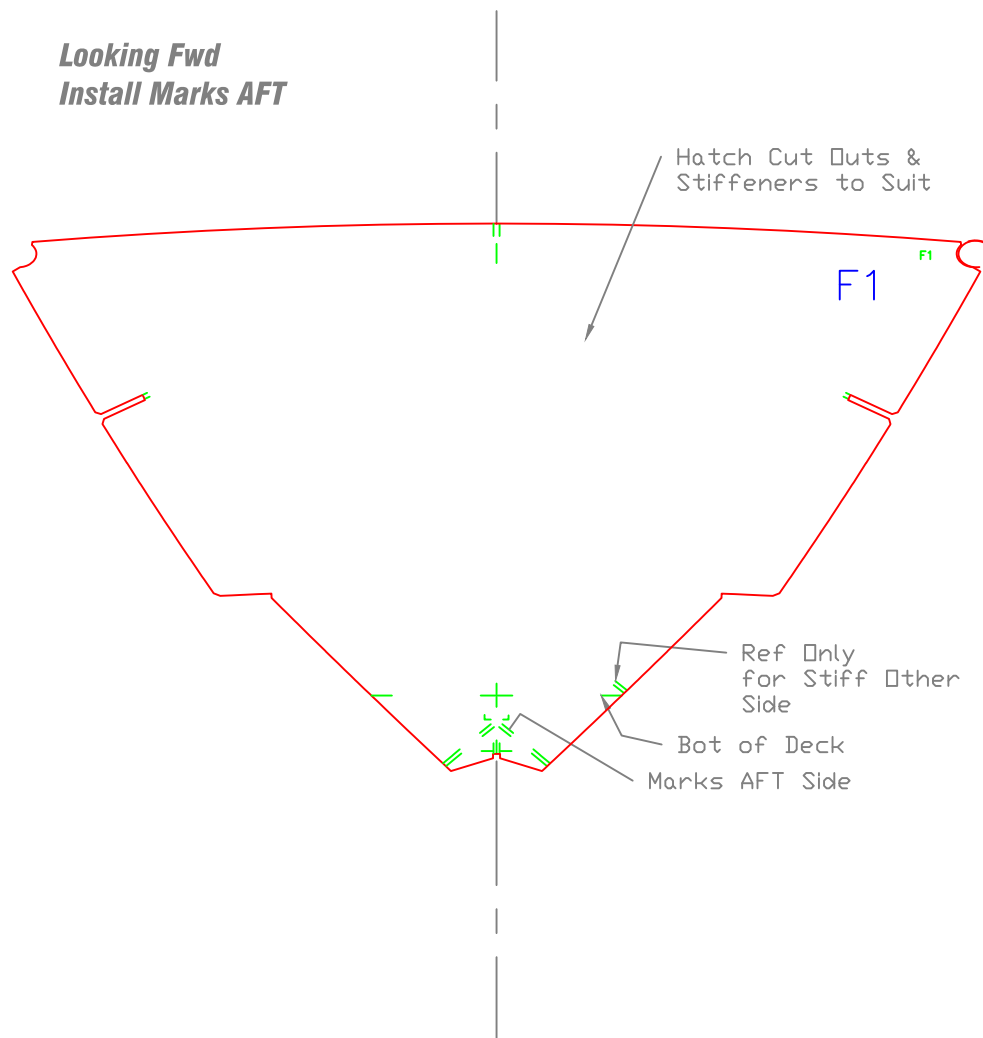




20' x 8' Skiff		
TYPICAL SKIN JOINTS		
SCALE NONE	DES/DWN WAL	DATE 5/29/17
<b>Response Marine, Inc.</b> Newburyport, MA, <a href="http://www.responsemarine.com">www.responsemarine.com</a>		SHEET DWG NO. 559-C-1

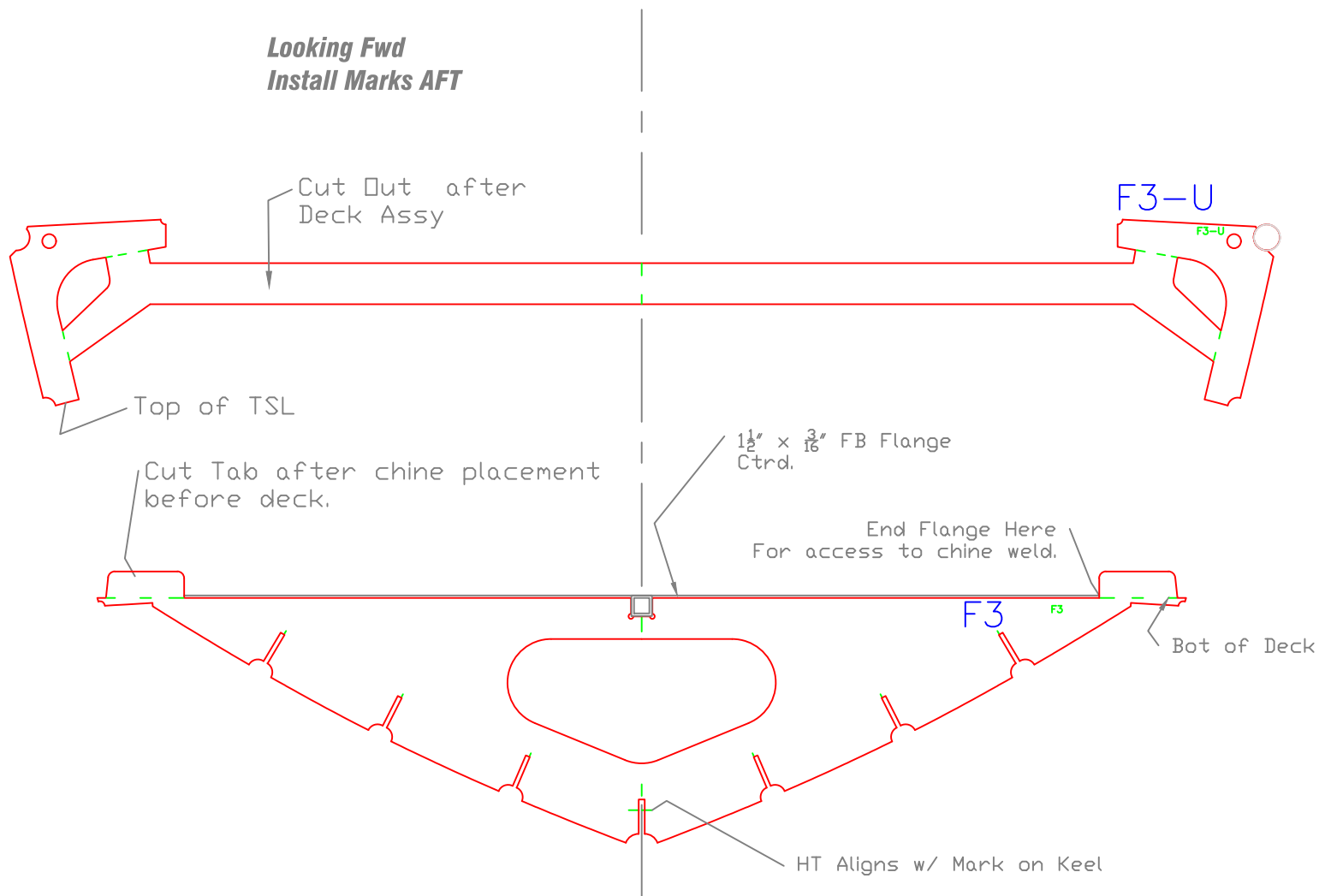
REV.	DESCRIPTION

Looking Fwd  
Install Marks AFT



20' x 8' Skiff		
FRAME 1		
SCALE 1" = 1'	DES/DWN WAL	DATE 5/29/17
<b>Response Marine, Inc.</b>		SHEET
Newburyport, MA, <a href="http://www.responsemarine.com">www.responsemarine.com</a>		DWG NO. 559-F1

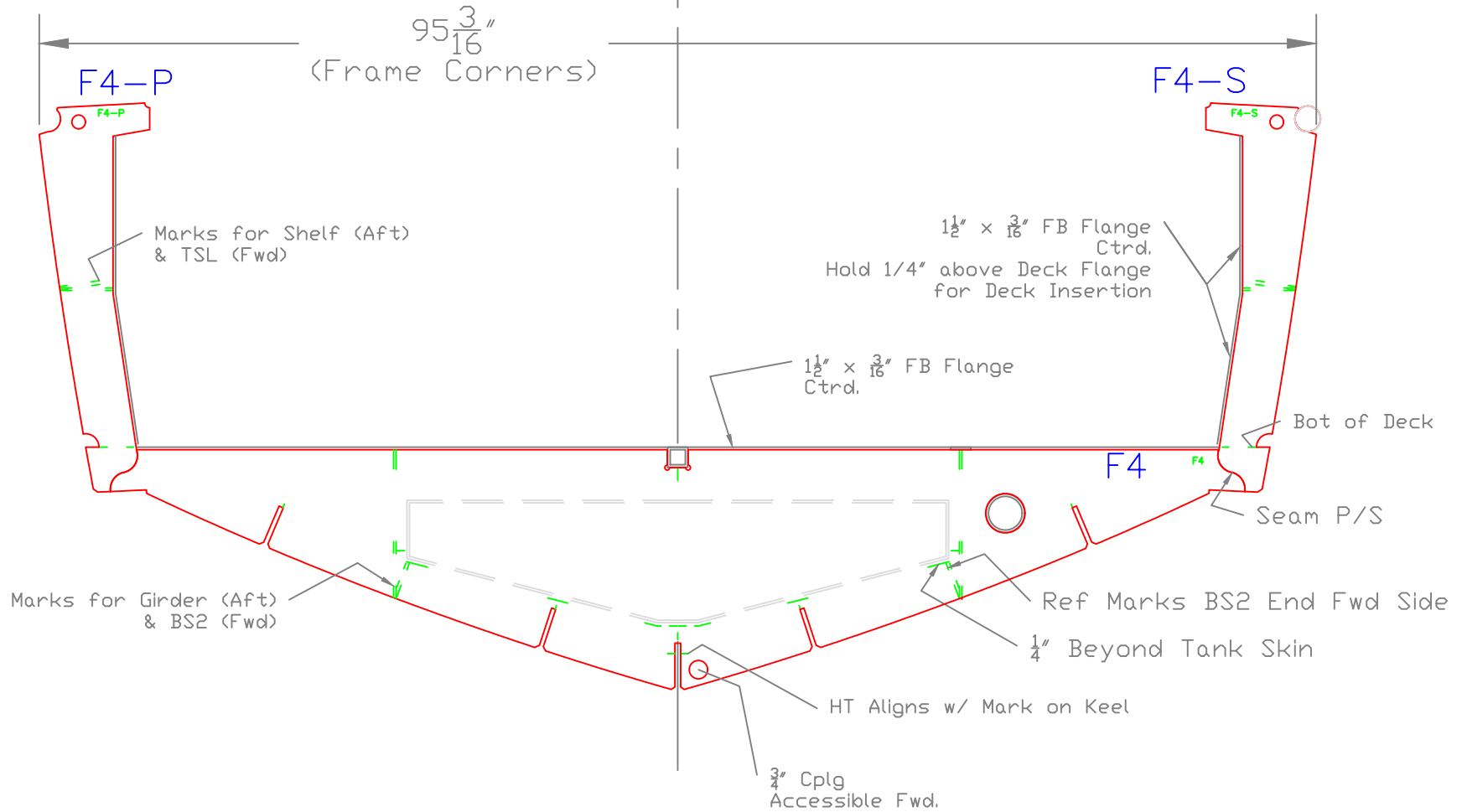
REV.	DESCRIPTION



20' x 8' Skiff		
FRAME 3		
SCALE 1" = 1'	DES/DWN WAL	DATE 5/29/17
<b>Response Marine, Inc.</b> Newburyport, MA, <a href="http://www.responsemarine.com">www.responsemarine.com</a>		SHEET
		DWG NO. 559-F3

REV.	DESCRIPTION

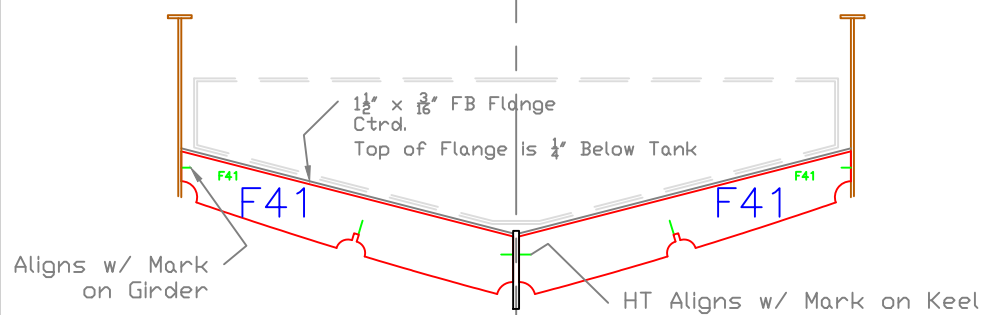
Looking Fwd  
Install Marks AFT



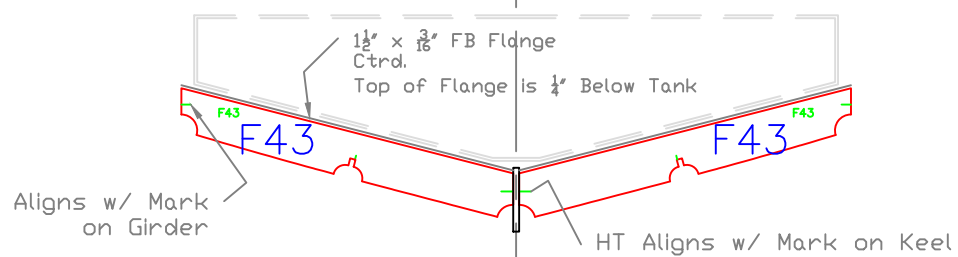
20' x 8' Skiff		
FRAME 4		
SCALE 1" = 1'	DES/DWN WAL	DATE 5/29/17
<b>Response Marine, Inc.</b>		SHEET
Newburyport, MA, <a href="http://www.responsemarine.com">www.responsemarine.com</a>		DWG NO. 559-F4

REV.	DESCRIPTION

**Looking Fwd**  
**Install Marks AFT**  
**2 Parts, Install after Keel & Girders**

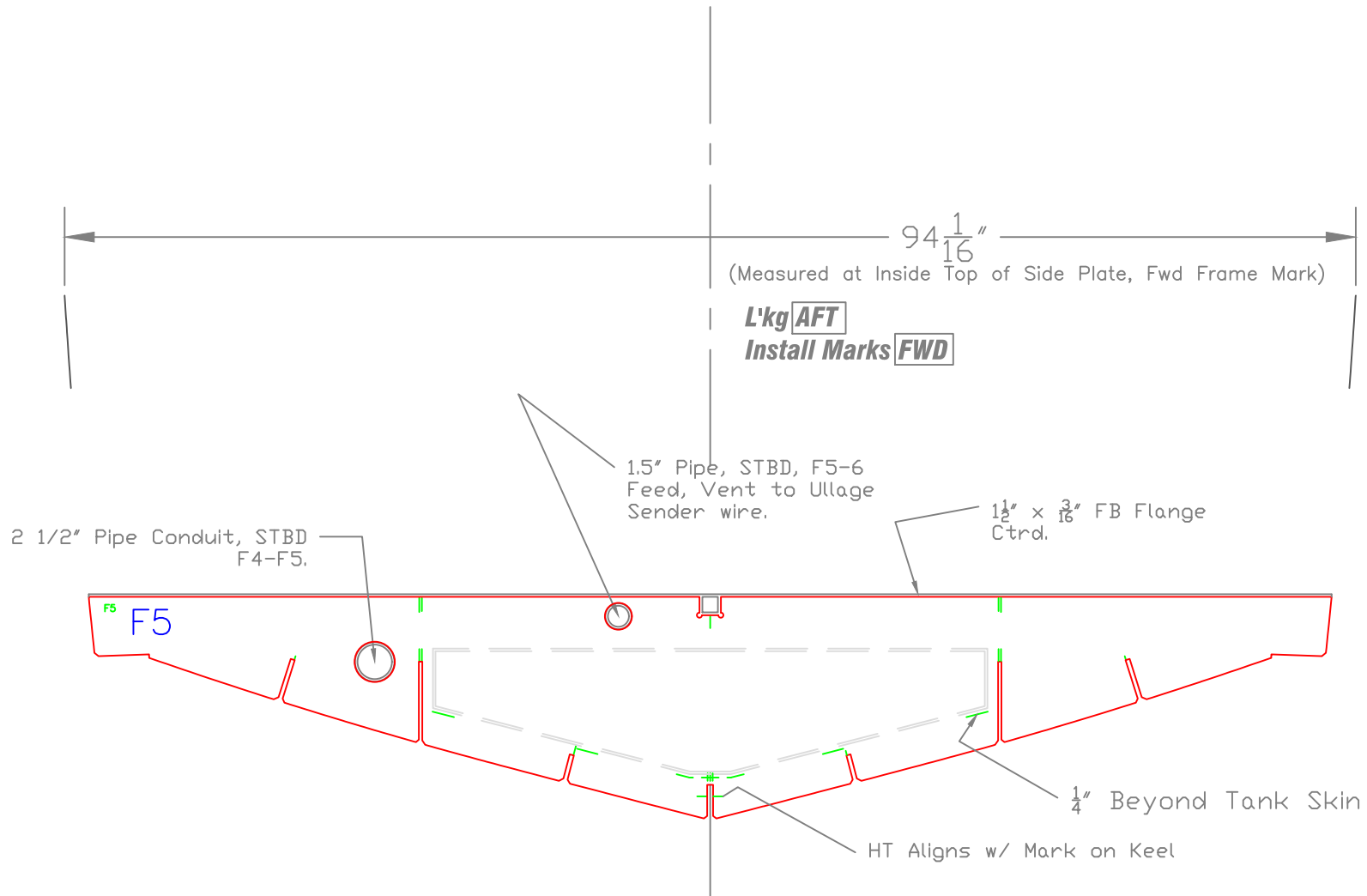


**Looking Fwd**  
**Install Marks AFT**  
**2 Parts, Install after Keel & Girders**



20' x 8' Skiff		
FRAME 41 & 43		
SCALE 1" = 1'	DES/DWN WAL	DATE 5/29/17
<b>Response Marine, Inc.</b>		SHEET
Newburyport, MA, <a href="http://www.responsemarine.com">www.responsemarine.com</a>		DWG NO. 559-F41

REV.	DESCRIPTION



20' x 8' Skiff		
FRAME 5		
SCALE 1" = 1'	DES/DWN WAL	DATE 5/29/17
<b>Response Marine, Inc.</b>		SHEET
Newburyport, MA, <a href="http://www.responsemarine.com">www.responsemarine.com</a>		DWG NO. 559-F5

REV.	DESCRIPTION