

Response Marine, Plaz Parts for 293 18' NY Sled  
 File: RMIdes\Viking\  
 revised: 1/31/08

Print Date: 2/1/08

Note: Bending notes "Y-bg" are all the same back gauge, per dwg 293-B-1

**1/8" Parts- 5052 H32**

<u>Part #</u>	<u>Pieces</u>	<u>Description</u>	<u>Stock</u>	<u>Bending</u>
TB	2	Fuel Tank Baffles		Y-bg
TE	2	Fuel Tank Ends		
TS	1	Fuel Tank Skin		Y
TT	1	Fuel Tank Top		
	6	Total 1/8" Parts		

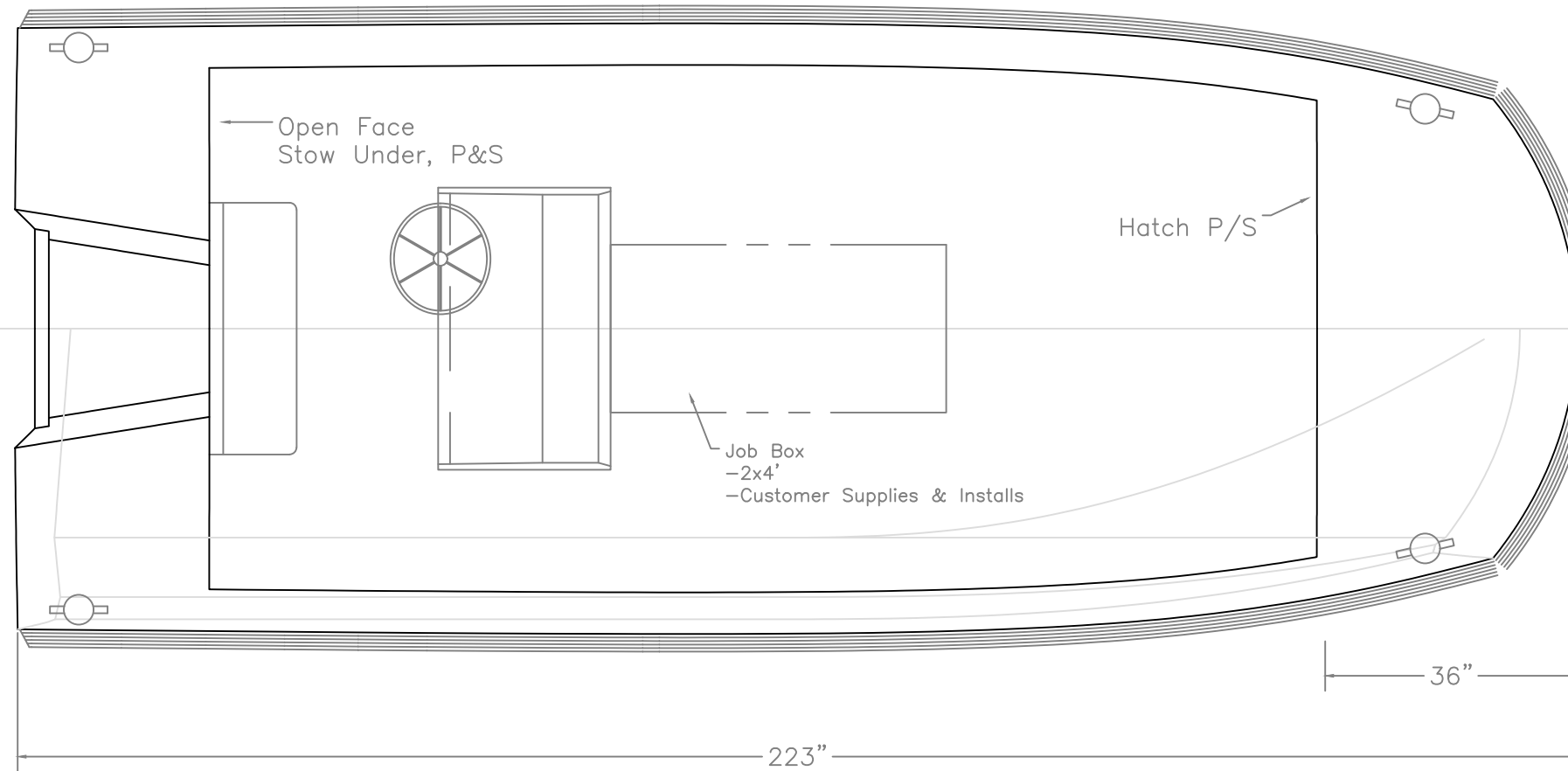
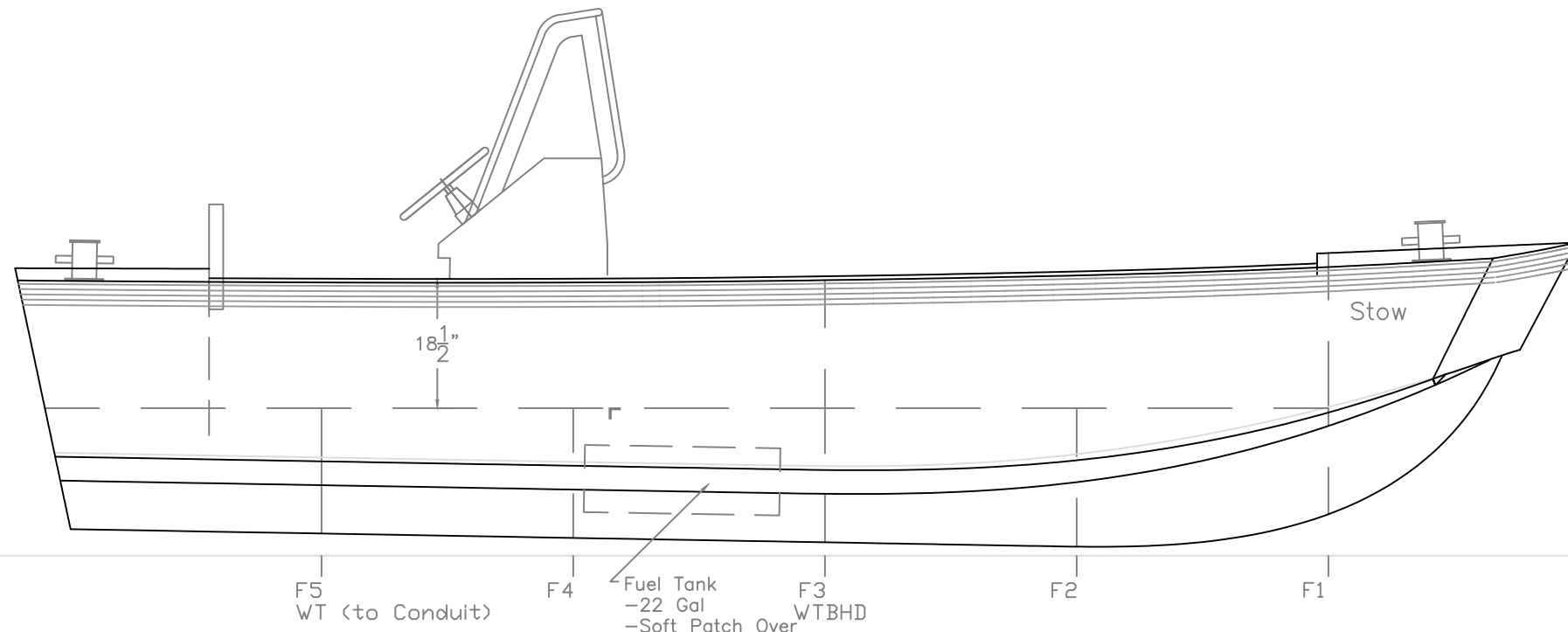
**3/16" Parts- 5052**

<u>Part #</u>	<u>Pieces</u>	<u>Description</u>	<u>Stock</u>	<u>Bending</u>
B-0	1	Bow Stiffener at CL		
B-1	2	Bow Stiffener at 14" off CL		
B-A	2	Bottom Fwd		
B-B	1	Hull Bottom Body aft		Y
BF	2	Bow Filler, CL fwd of F1		
Bow	1	Bow		
BS-1A	2	Bottom Stringer1 Fwd		
BS-1B	2	Bottom Stringer 1 Aft		
BS-2	2	Bottom Stringer 2 Aft		
BS-2	2	Bottom Stringer 2, Fwd		
C-A	2	Chine Fwd		
CB	1	Console Back		Y
CF	1	Console Front		Y
CMB	1	Console Mid Bulkhead		
CS	2	Console Sides		
CT	1	Console Top		Y
DA-P	1	Deck Fwd, Port		
DA-S	1	Deck Fwd, Stbd		
DB-P	1	Deck Mid, Port		
DB-S	1	Deck Mid, Stbd		
DC-P	1	Deck Aft, Port		
DC-S	1	Deck Aft, Stbd		
DF	2	Deck Filler, OB, Fwd of Frame 1		
DP	6	Deck Plates		
DR	6	Deck Plate Rings, install on bot of deck		
DT	1	Deck at Tank, Soft Patch		

F1	1	Frame 1	Y-bg
F2	1	Frame 2	Y-bg
F3	1	Frame 3	Y-bg
F3-P	1	Frame 3 Topsides, Port	Y-bg
F3-S	1	Frame 3 Topsides, Stbd	
F4	1	Frame 4	Y-bg
F5	1	Frame 5	Y-bg
FD	1	Foredeck	
FDC	1	Foredeck Coaming	
FL	2	Bottom Flat, Fwd	
FT-A	1	Fuel Trunk, Aft Side	
FT-B	1	Fuel Trunk, Face Panel	
FT-C	1	Fuel Trunk, Cover Plate	
SB	1	Splashwell Bulkhead/Coaming	
SD	2	Side Decks	
SDC	2	Side Deck Coaming	
SPS-P	1	Splashwell Side, Port	
SPS-S	1	Splashwell Side, Stbd	
TC-A	2	Trip Chine Fwd	
TD	2	Transom Deck	
TS-A	2	Topsides fwd	
TS-B	2	Hull Side Body aft	Y
	75	Sub Total 3/16" Parts	

**1/4" Parts- 5083/86**

<u>Part #</u>	<u>Pieces</u>	<u>Description</u>	<u>Stock</u>	<u>Bending</u>
T	1	Transom		
	1	Sub Total 1/4" Parts		
	82	TOTAL PARTS		



PLAN & PROFILE

S-185: 18'6" x 7'4" Work Sled

For: NYDEC

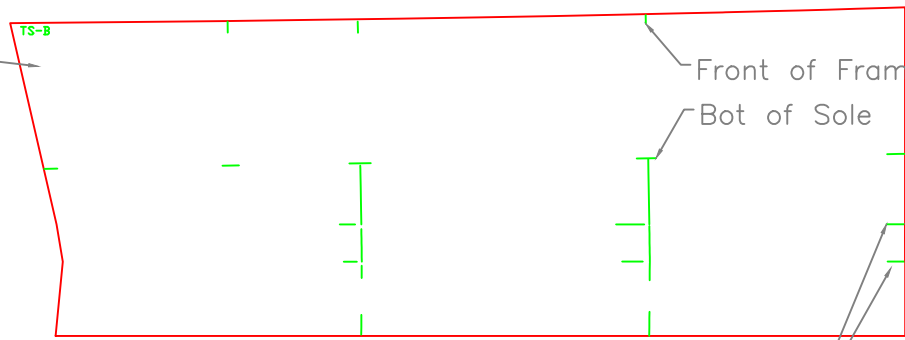
SCALE 1/2" = 1'	DES/DWN WAL	DATE 2/11/08
--------------------	----------------	-----------------

<b>Response Marine, Inc.</b>		REV 12/9/13
------------------------------	--	----------------

Newburyport, MA, www.responsemarine.com DWG NO.  
293-01, R1

REV.	DESCRIPTION
12/9/13	Tank to 22 gal for EPA, Job Box Note

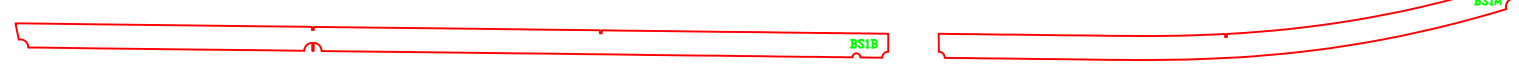
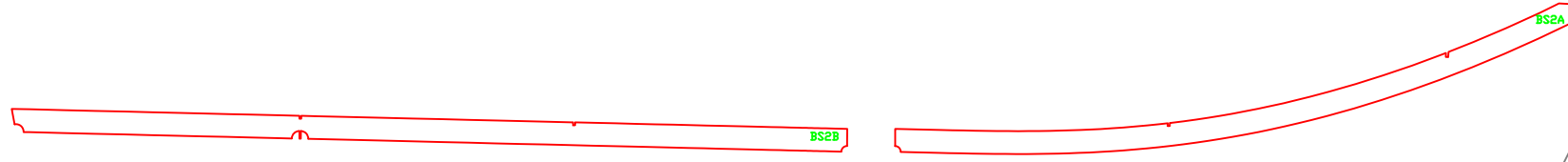
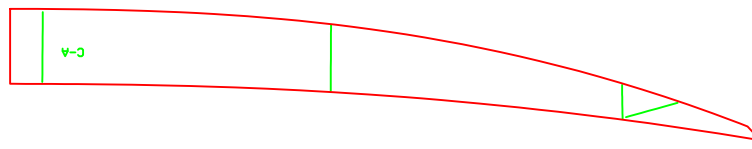
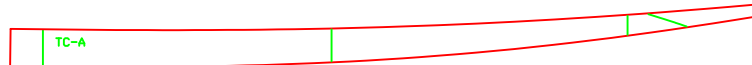
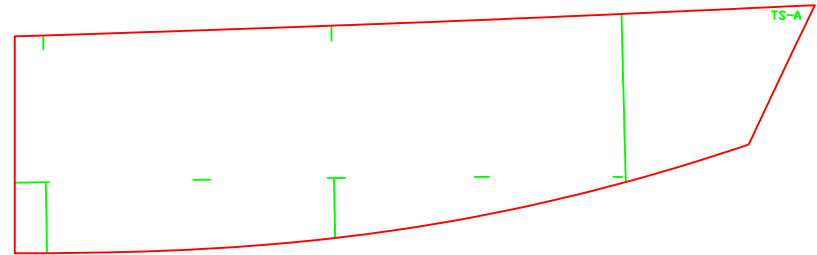
Hull Sides Aft  
(TS-B)  
Bend to Match  
Transom or F5  
(Prefer Bend  
slightly Less?)



Front of Frames

Bot of Sole

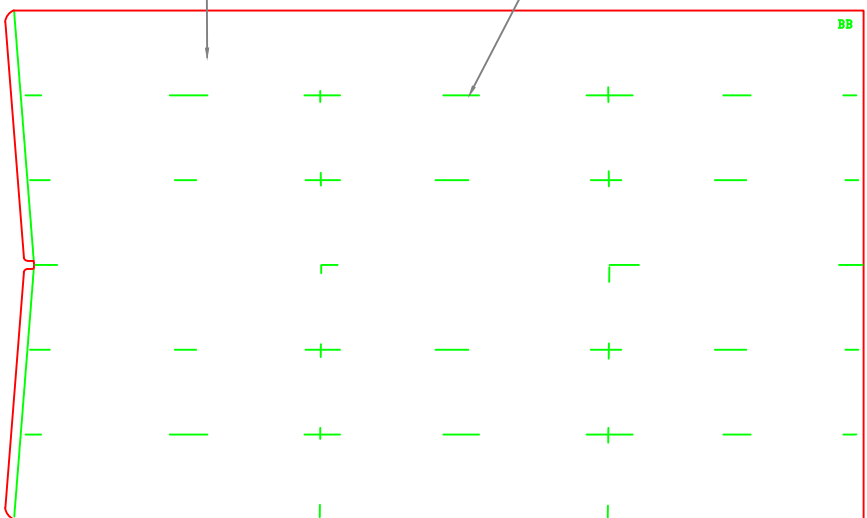
Bend Lines (2)



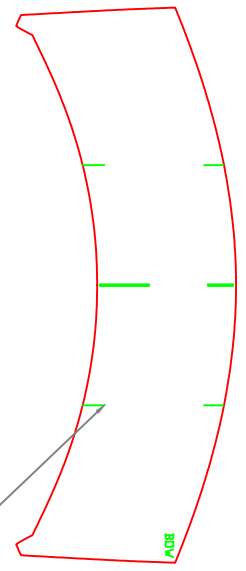
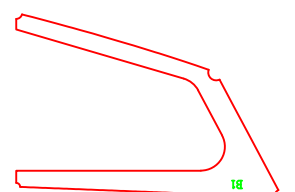
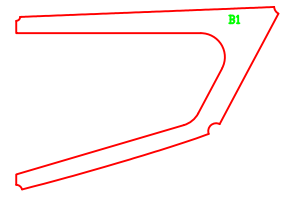
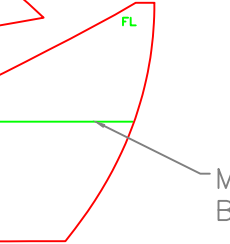
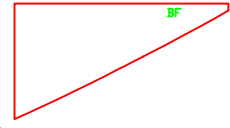
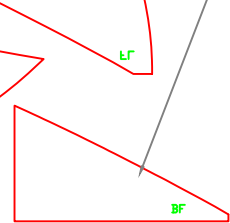
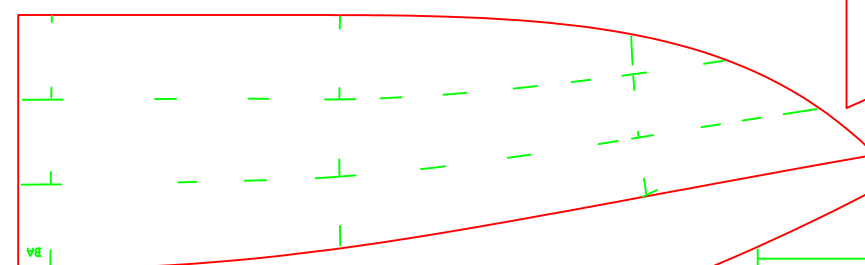
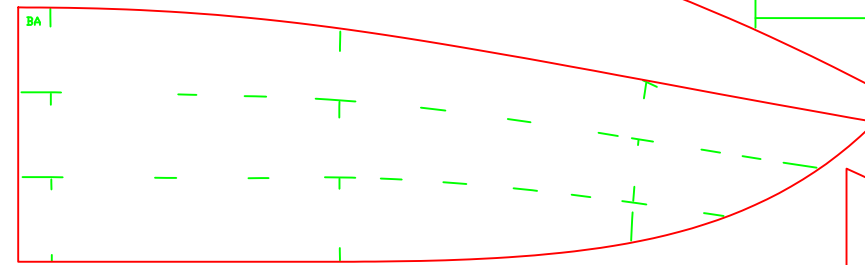
BS1  
End at F1

Bottom Filler  
Fwd of F1

Hull Bottom Aft (B-B)  
Bend on CL to Match  
Transom or F5



Marks are Inside of  
Stringers



Marks are Outside of  
Bow Stiffeners

HULL PARTS

S-185: 18'6" x 7'4" Work Sled

For: NYDEC

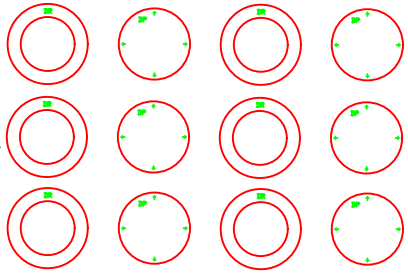
SCALE 1/2" = 1'	DES/DWN WAL	DATE 2/11/08
--------------------	----------------	-----------------

REV.	DESCRIPTION

**Response Marine, Inc.**  
Newburyport, MA, www.responsemarine.com

DWG NO.  
293-2-1

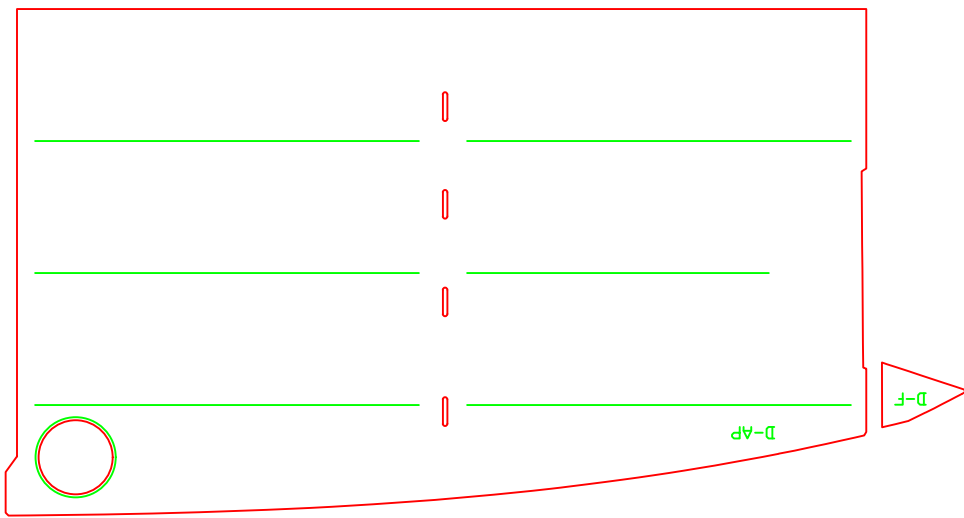
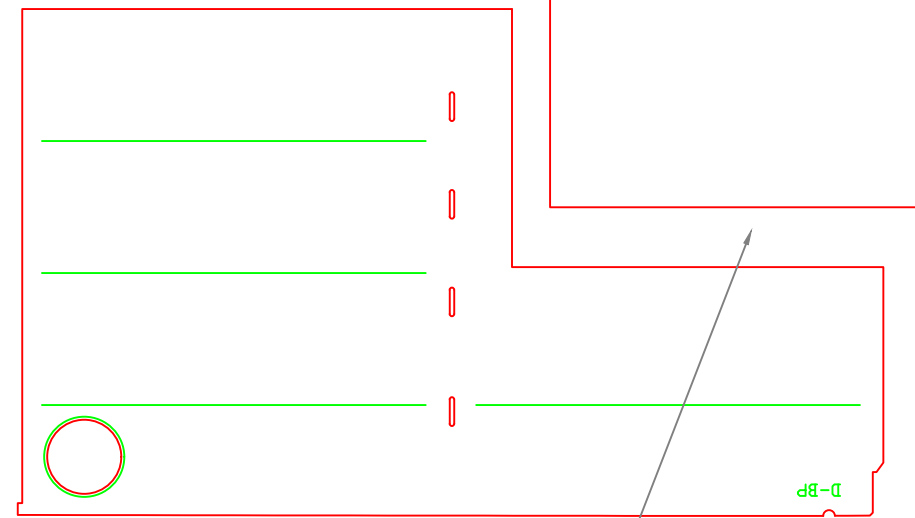
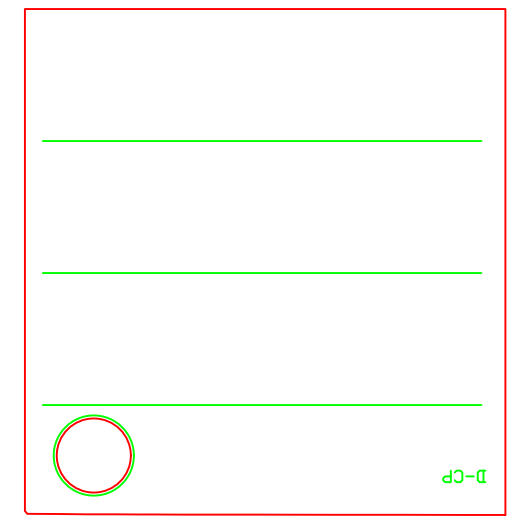
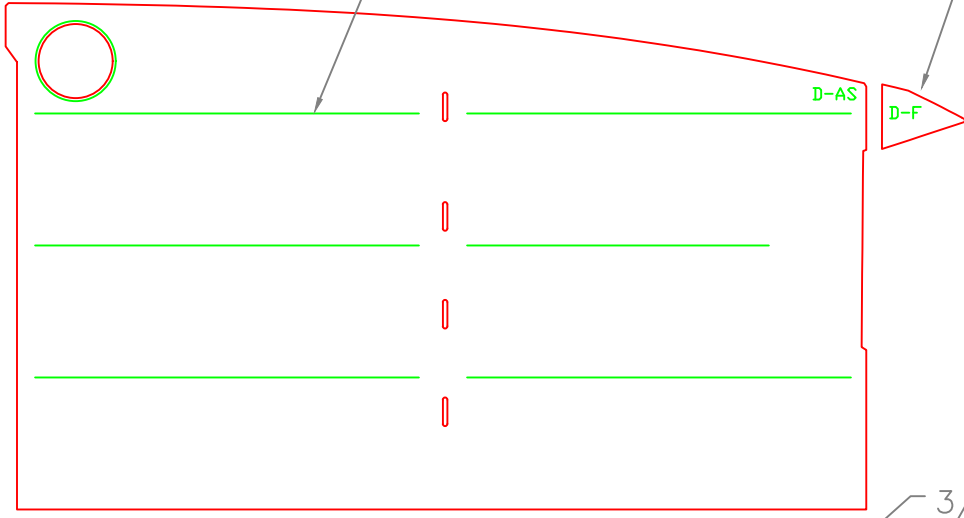
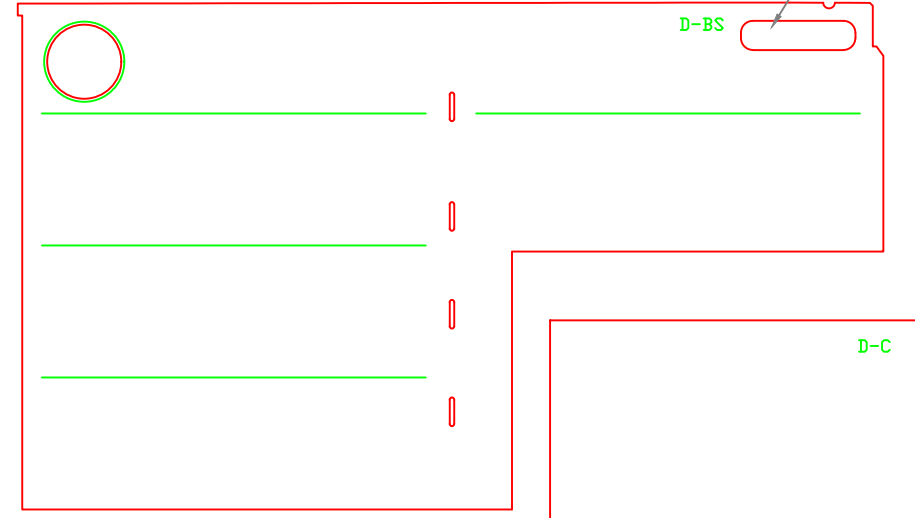
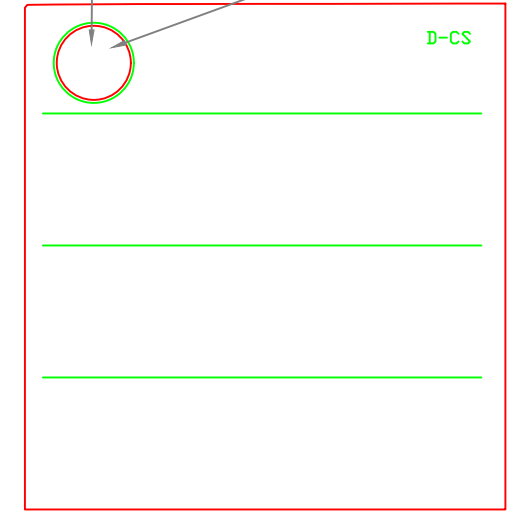
Deck Plates  
Weld Rings WT to Underside  
Drill & Tap Plates



Fuel Trunk, Stbd

1 1/2" T  
Length of Marks  
Snipe Ends 45°

Filler Fwd of F1



3/8" Gap at  
Seams, Typ

Removable Panel at Tank  
Frame Aft & Sides w/ 2x3/16"  
Angle

COCKPIT DECK

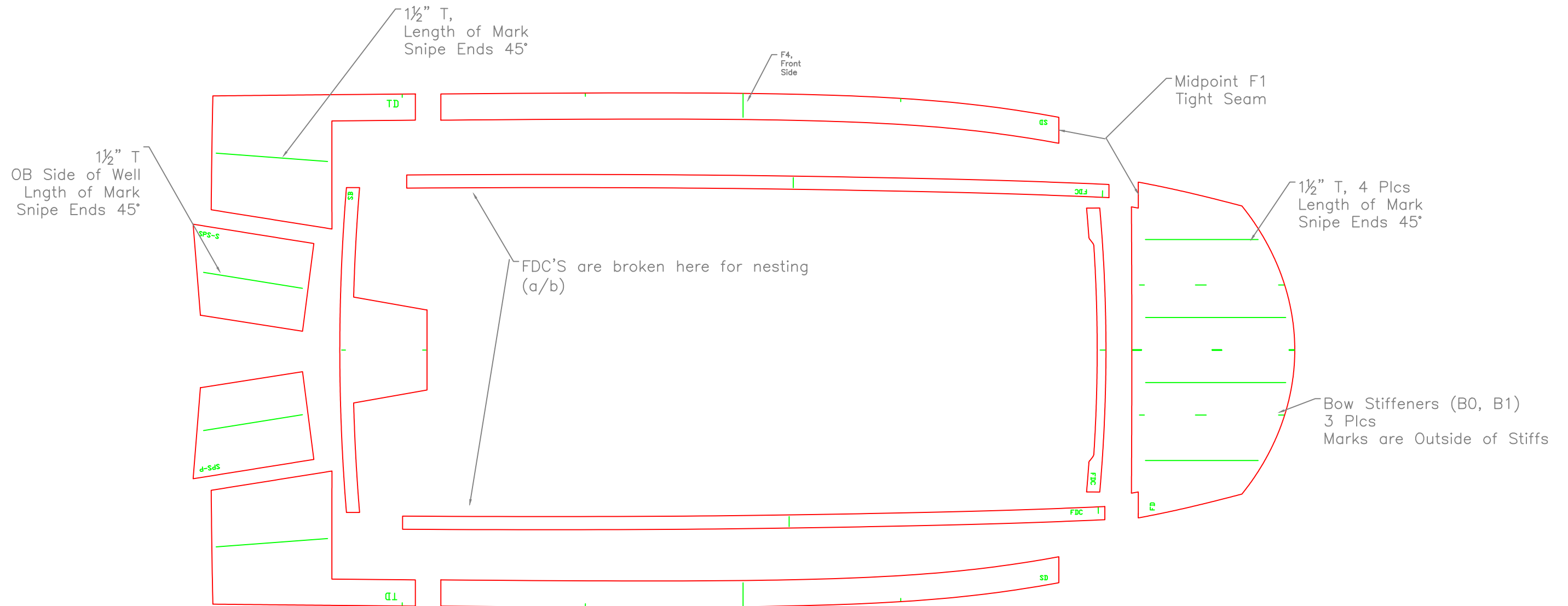
S-185: 18'6" x 7'4" Work Sled

For: NYDEC

SCALE 1/2" = 1'	DES/DWN WAL	DATE 2/11/08
--------------------	----------------	-----------------

REV.	DESCRIPTION

**Response Marine, Inc.**  
Newburyport, MA, www.responsemarine.com  
DWG NO.  
293-2-2



SIDE DECKS & COAMINGS  
 S-185: 18'6" x 7'4" Work Sled

For: NYDEC

SCALE 1/2" = 1'	DES/DWN WAL	DATE 2/11/08
--------------------	----------------	-----------------

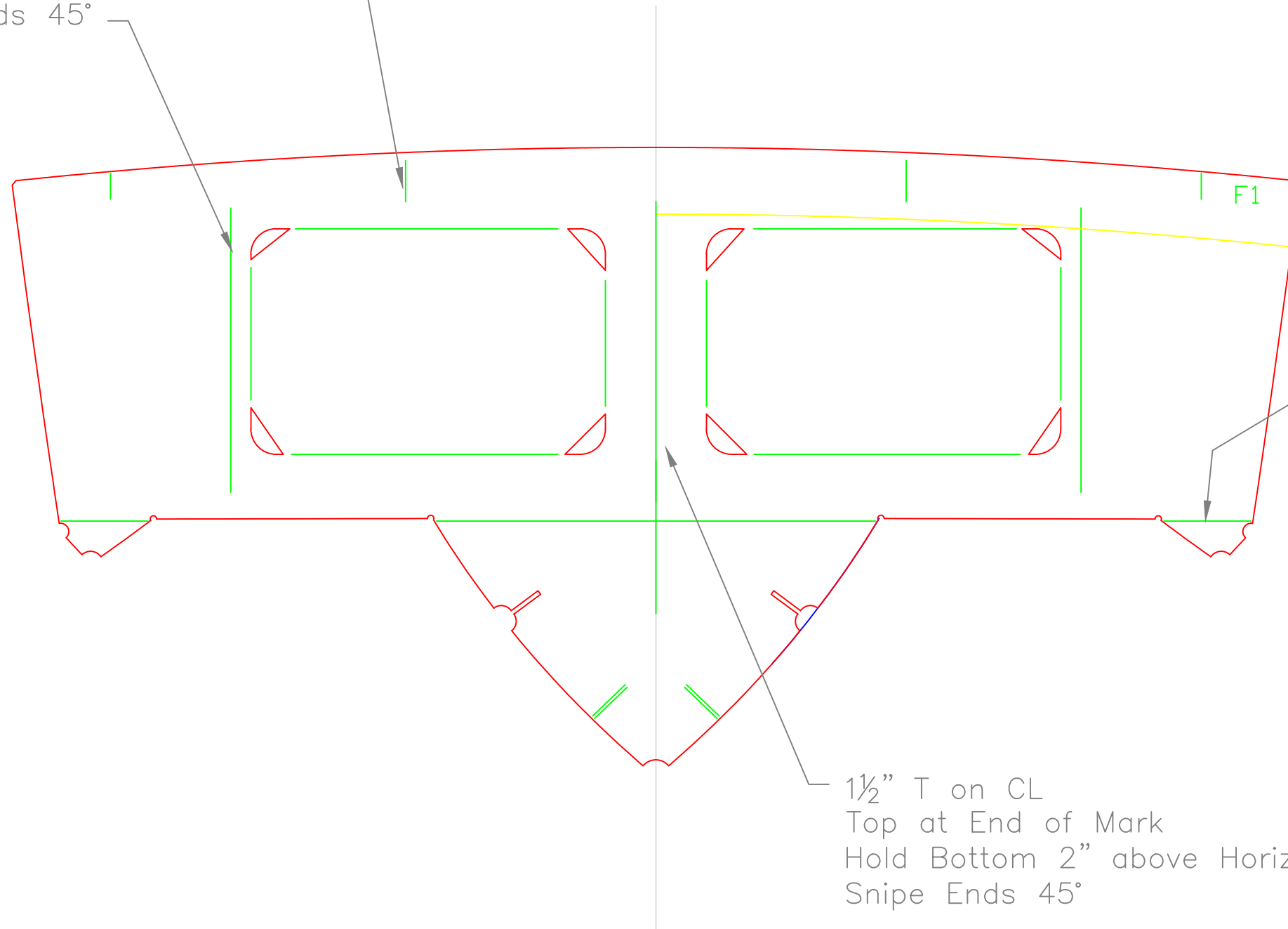
REV.	DESCRIPTION

**Response Marine, Inc.**  
 Newburyport, MA, www.responsemarine.com  
 SHEET  
 DWG NO.  
 293-2-3

1/2" T  
 Outboard of Hatches  
 Length of Mark  
 Snipe Ends 45°

OB Side  
 of B-1

Stiffeners on Front Side



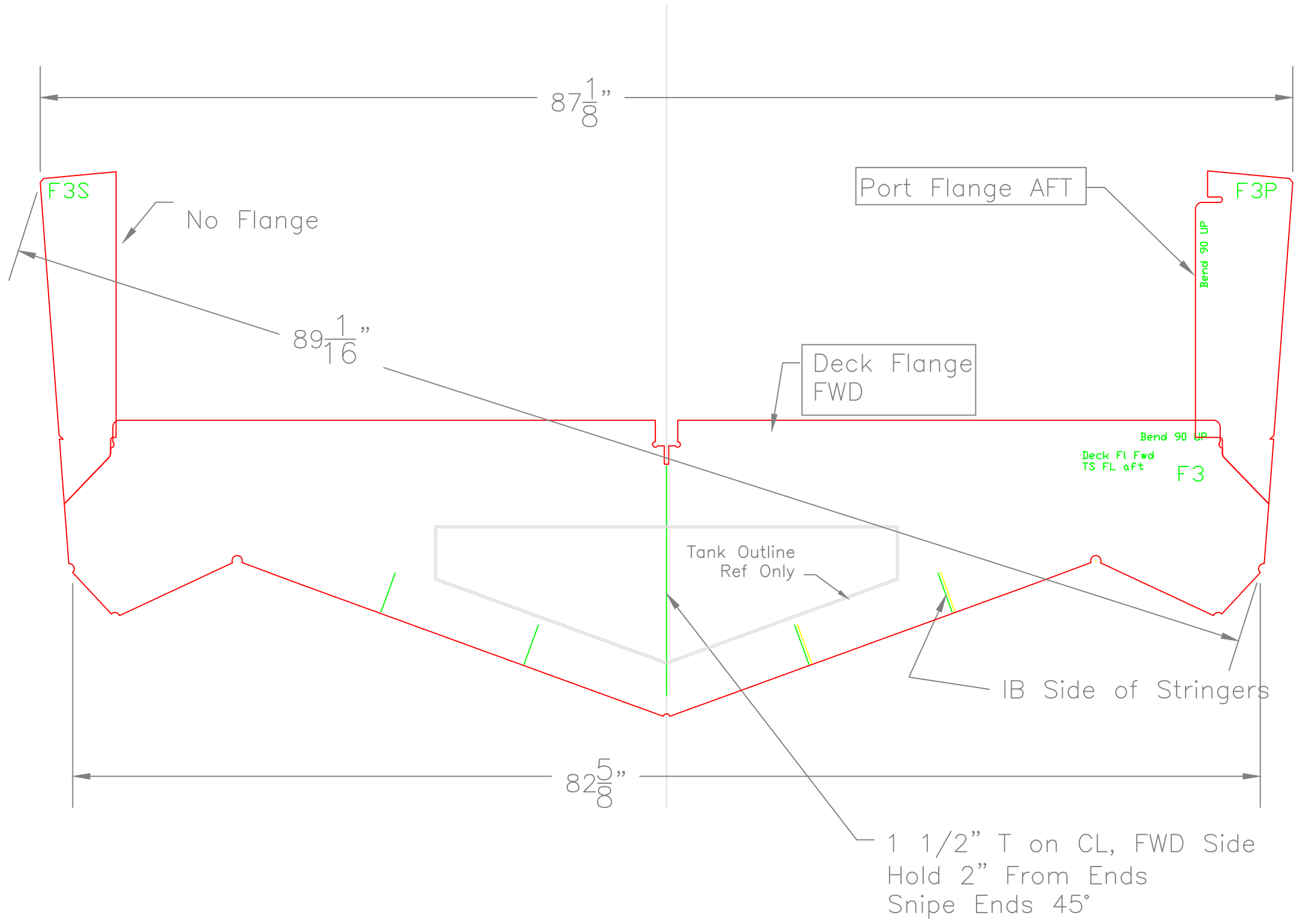
Bot of Sole

1/2" T on CL  
 Top at End of Mark  
 Hold Bottom 2" above Horiz Line  
 Snipe Ends 45°

FRAME 1		
S-185: 18'6" x 7'4" Work Sled		
For: NYDEC		
SCALE	DES/DWN	DATE
1 1/2" = 1'	WAL	2/11/08
		SHEET
		DWG NO.
		293-F-1

REV.	DESCRIPTION

**Response Marine, Inc.**  
 Newburyport, MA, www.responsemarine.com



FRAME 3

S-185: 18'6" x 7'4" Work Sled

For: NYDEC

SCALE 1 1/2" = 1'	DES/DWN WAL	DATE 2/11/08
----------------------	----------------	-----------------

**Response Marine, Inc.**  
Newburyport, MA, www.responsemarine.com

SHEET  
DWG NO.  
293-F-3

REV.	DESCRIPTION