

***** NC CUT Parts *****

Response Marine, Inc.

Boat: Response #550 for Jay Harrington, 18'6" Skiff

File: \wbi\seaduck17\deriv\Harrington 18

Rev. Date: 1/12/17

Print Date: 1/14/17

3/16" Parts- 5052 H32

<u>2 Boat Qty</u>	<u>Part #</u>	<u>Pieces</u>	<u>Description</u>	<u>Bend</u>	<u>Bend Info</u>
2	DB-A	1	Deck Body, F1-F2		
2	DB-BP	1	Deck Body, Port, F2-F4		
2	DB-BS	1	Deck Body, Stbd, F2-F4		
2	DB-CP	1	Deck Body, Port, F4-Transom		
2	DB-CS	1	Deck Body, Stbd, F4-Transom		
2	DM-AP	1	Deck Margin, Fwd, Port, F1-F3		
2	DM-AS	1	Deck Margin, Fwd, Stbd, F1-F3		
2	DM-BP	1	Deck Margin, Aft, Port, F3-Transom		
2	DM-BS	1	Deck Margin, Aft, Stbd, F3-Transom		
2	J-TR	2	Transom Jigs		
2	SD-AP	1	Side Deck, Fwd, Port		
2	SD-AS	1	Side Deck, Fwd, Stbd		
2	SD-BP	1	Side Deck, Aft, Port		
2	SD-BS	1	Side Deck, Aft, Stbd		
2	SDC-A	1	Side Deck Coaming, Fwd, CL		
2	SDC-BP	1	Side Deck Coaming, Aft, Port		
2	SDC-BS	1	Side Deck Coaming, Aft, Stbd		
34		18	Sub Total 3/16" 5052 parts		

3/16" Parts- 5086 H32

<u>2 Boat Qty</u>	<u>Part #</u>	<u>Pieces</u>	<u>Description</u>	<u>Bend</u>	<u>Bend Info</u>
2	ALB	1	Anchor Locker Bottom		
2	BOT-P	1	Bottom, Port		
2	BOT-S	1	Bottom, Stbd		
2	F1	1	Frame 1, Anchor Lkr Bulkhead		
2	F2	1	Frame 2, Below Deck (WTBHD)		
2	F3	1	Frame 3, Below Deck		
2	F4	1	Frame 4, Below Deck (WTBHD)		
2	F5	1	Frame 5, Below Deck		
2	G-P	1	Girder, Port (F3-Tran)		
2	G-S	1	Girder, Stbd (F3-Tran)		
2	ST	1	Stem Flat		
2	TDC-P	1	Transom Deck Coaming, Port		
2	TDC-S	1	Transom Deck Coaming, Stbd		
2	TD-P	1	Transom Deck, Port		
2	TD-S	1	Transom Deck, Stbd		
2	TS-P	1	Topsides, Port		
2	TS-S	1	Topsides, Stbd		

34 17 Sub Total 3/16" 5086 parts

68 35 Sub Total all 3/16" Parts

1/4" Parts- 5086 H32

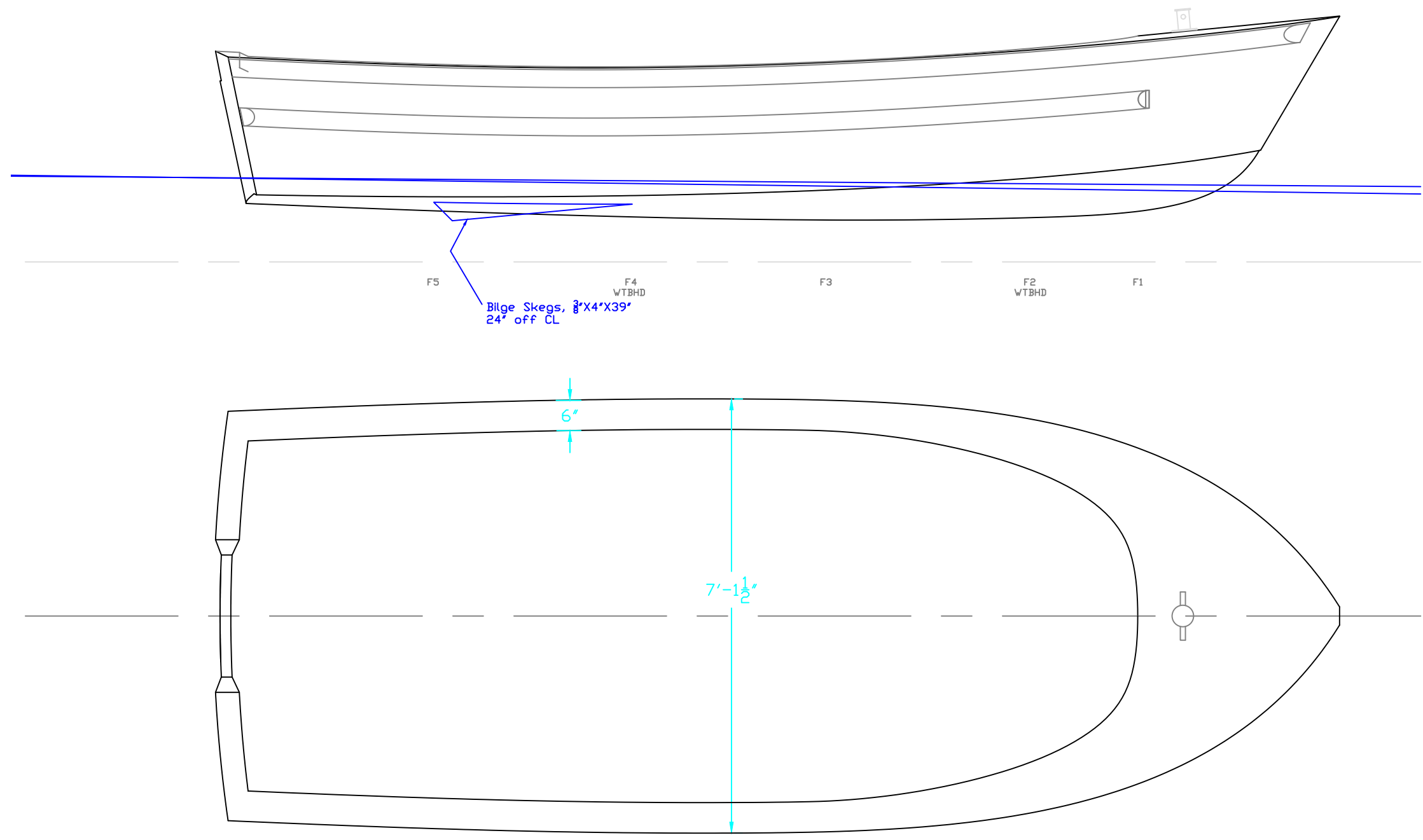
<u>2 Boat Qty</u>	<u>Part #</u>	<u>Pieces</u>	<u>Description</u>	<u>Bend</u>	<u>Bend Info</u>
2	BS-1AP	1	Bottom Stringer #1, Stem to aft of F3, Port		
2	BS-1AS	1	Bottom Stringer #1, Stem to aft of F3, Stbd		
2	BS-1BP	1	Bottom Stringer #1, Fwd of F4 to Transom, Port		
2	BS-1BS	1	Bottom Stringer #1, Fwd of F4 to Transom, Stbd		
2	BS-2P	1	Bottom Stringer #2, F1 to F3, Port		
2	BS-2S	1	Bottom Stringer #2, F1 to F3, Stbd		
2	TK-P	1	Transom Knee/Coaming, Port	Bend or Cut	
2	TK-S	1	Transom Knee/Coaming, Stbd	Bend or Cut	
2	TR	1	Transom		
18		9	Sub Total 1/4" 5086 parts		

3/8" Parts 5083/5086 H116

<u>2 Boat Qty</u>	<u>Part #</u>	<u>Pieces</u>	<u>Description</u>
2	C-AP	1	Chine, Fwd, Port
2	C-AS	1	Chine, Fwd, Stbd
2	C-BP	1	Chine, Aft, Port
2	C-BS	1	Chine, Aft, Stbd
2	K-A	1	Keel, Fwd
2	K-B	1	Keel, Mid
2	K-C	1	Keel, Aft
2	TL	1	Transom Lip
16		8	Total 3/8" parts
102		52	Total Parts

DRAWING LIST

Delivered	Design	Dwg	Description	Customer	Date
#550					
WBI- Harrington Skiff					
	550	-1	Outboard Views		1/9/17
		-2	Inboard Pro & Body Plan		1/9/17
		-2-1	Keel Layout		1/14/17
		-2-2	Bottom PL & Stringers		1/14/17
		-2-3	Side Decks		1/14/17
		-2-4	Cockpit Deck		1/14/17
		-2-5	Transom		1/14/17
		-F-1	Frame 1		1/14/17
		-F-2	Frames 2 & 3		1/14/17
		-F-3	Frames 3 & 4		1/14/17



F5 F4 F3 F2 F1

Bilge Skegs, 3/4" X 4" X 39"
24" off CL

WTBHD

WTBHD

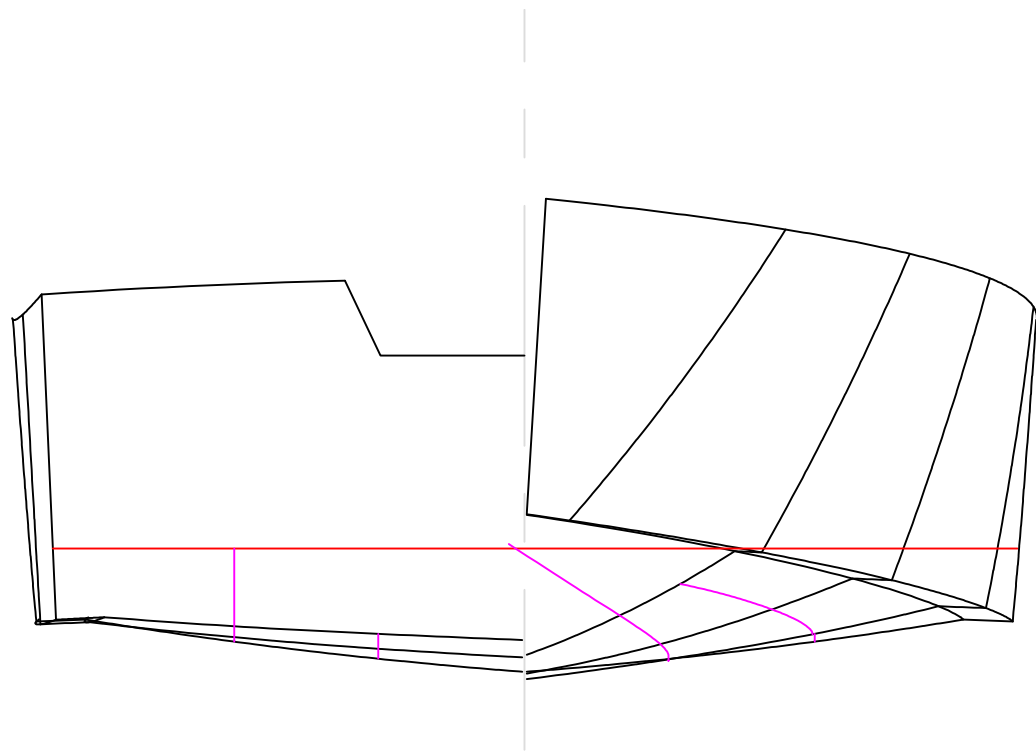
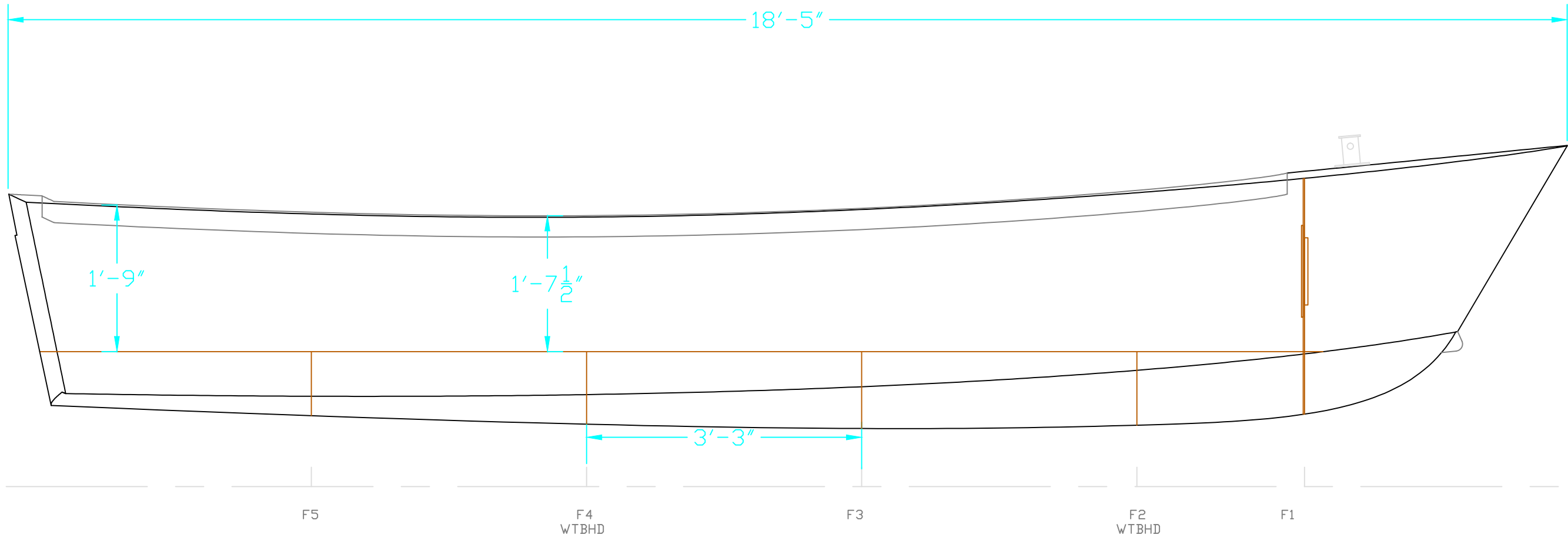
6'

7'-1 1/2"

Design/Outfit for Commercial Use Only

REV.	DESCRIPTION

18.5' x 7 2' Work Skiff		
Outboard Views		
SCALE 1/2" = 1'	DES/DWN WAL	DATE 1/9/17
Response Marine, Inc.		SHEET
Newburyport, MA, www.responsemarine.com		DWG NO. 550-1

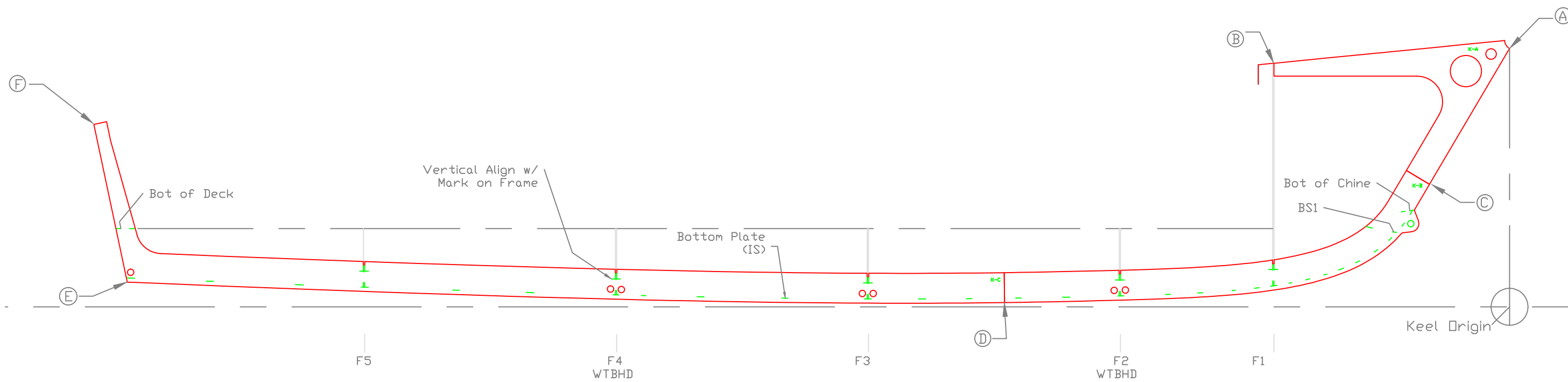


Design/Outfit for Commercial Use Only

REV.	DESCRIPTION

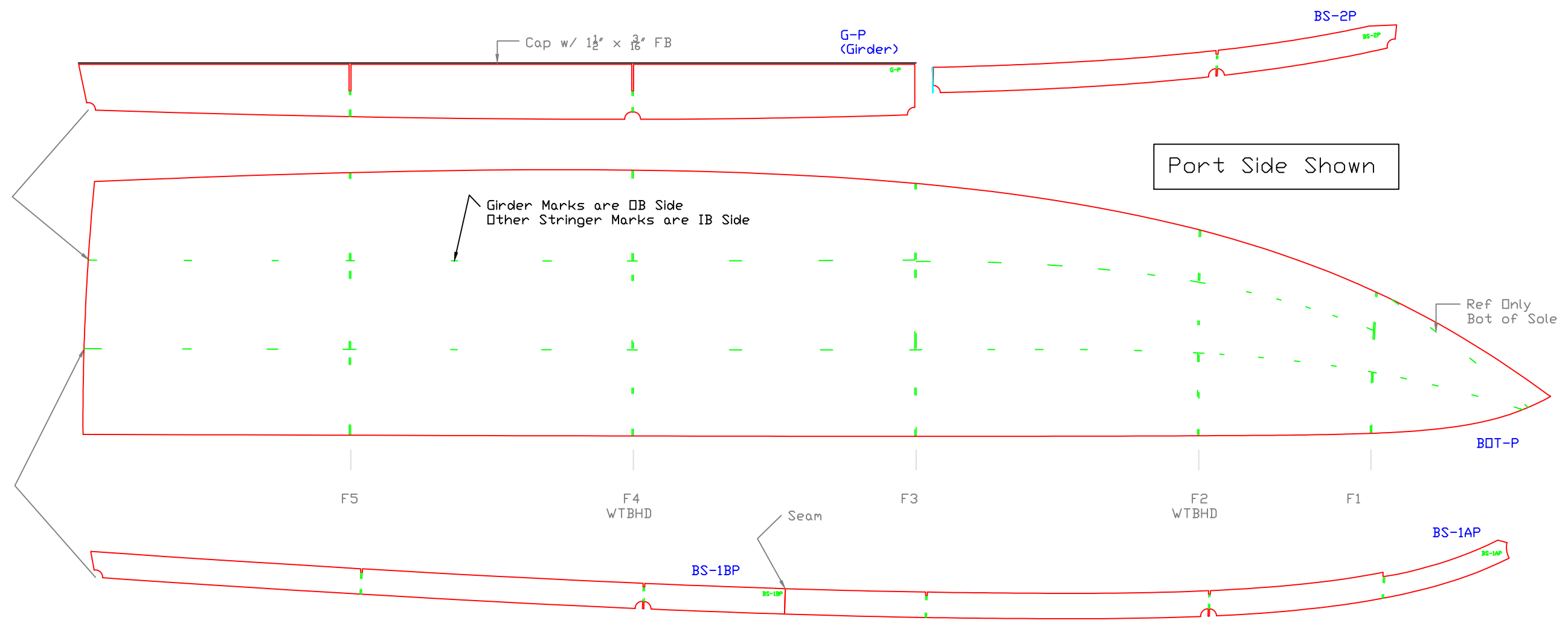
18.5' x 7'2" Work Skiff		
Inboard Pro & Body Plan		
SCALE 3/4" = 1'	DES/DWN WAL	DATE 1/9/17
Response Marine, Inc.		SHEET
Newburyport, MA, www.responsemarine.com		DWG NO. 550-2

KEEL POINTS		1/14/17						
		Inches- sixteenths		ALIGNED (Inches-sixteenths)				
		Horizontal	Vertical	A	B	C	D	E
A to Origin			20 15/16					
B to Origin								
C to Origin								
D to Origin								
E to Origin								
F to Origin								
A to Origin								
B to Origin								
C to Origin								
D to Origin								
E to Origin								
F to Origin								



18.5' x 7 2' Work Skiff		
KEEL LAYOUT		
SCALE 3/4" = 1'	DES/DWN WAL	DATE 1/14/17
Response Marine, Inc.		SHEET
Newburyport, MA, www.responsemarine.com		DWG NO. 550-2-1

REV.	DESCRIPTION



Port Side Shown

Girder Marks are DB Side
Other Stringer Marks are IB Side

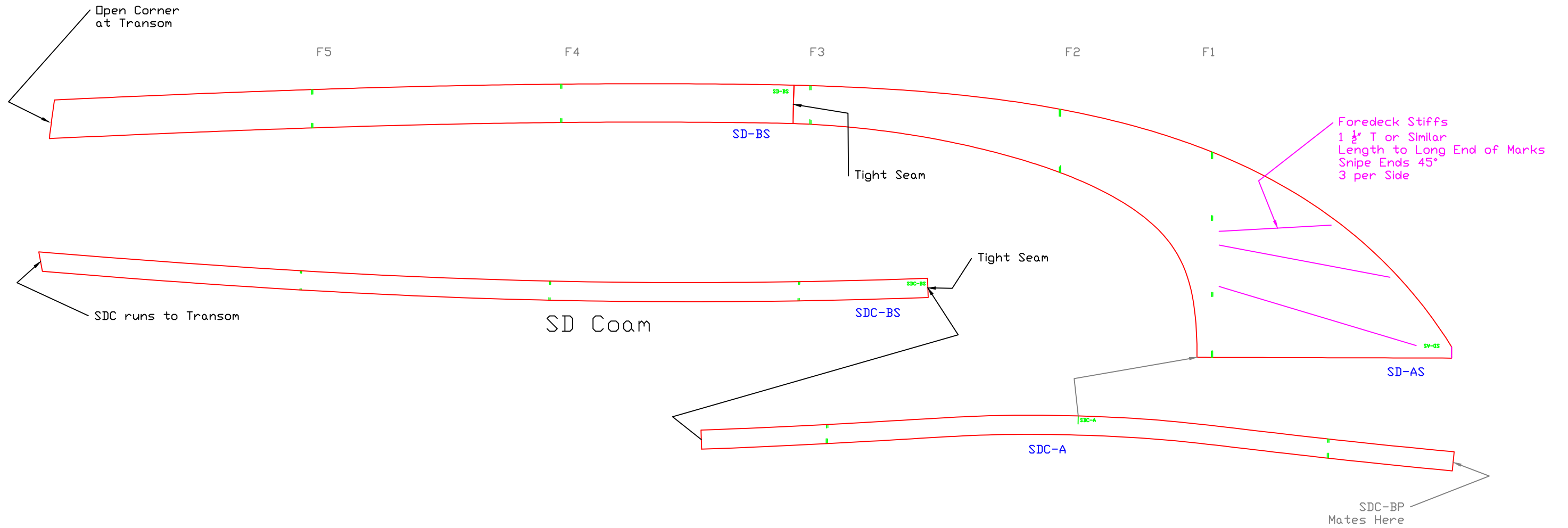
Ref Only
Bot of Sole

18.5' x 7 2' Work Skiff
BOTTOM PL & STRINGERS

SCALE 3/4" = 1'	DES/DWN WAL	DATE 1/14/17
--------------------	----------------	-----------------

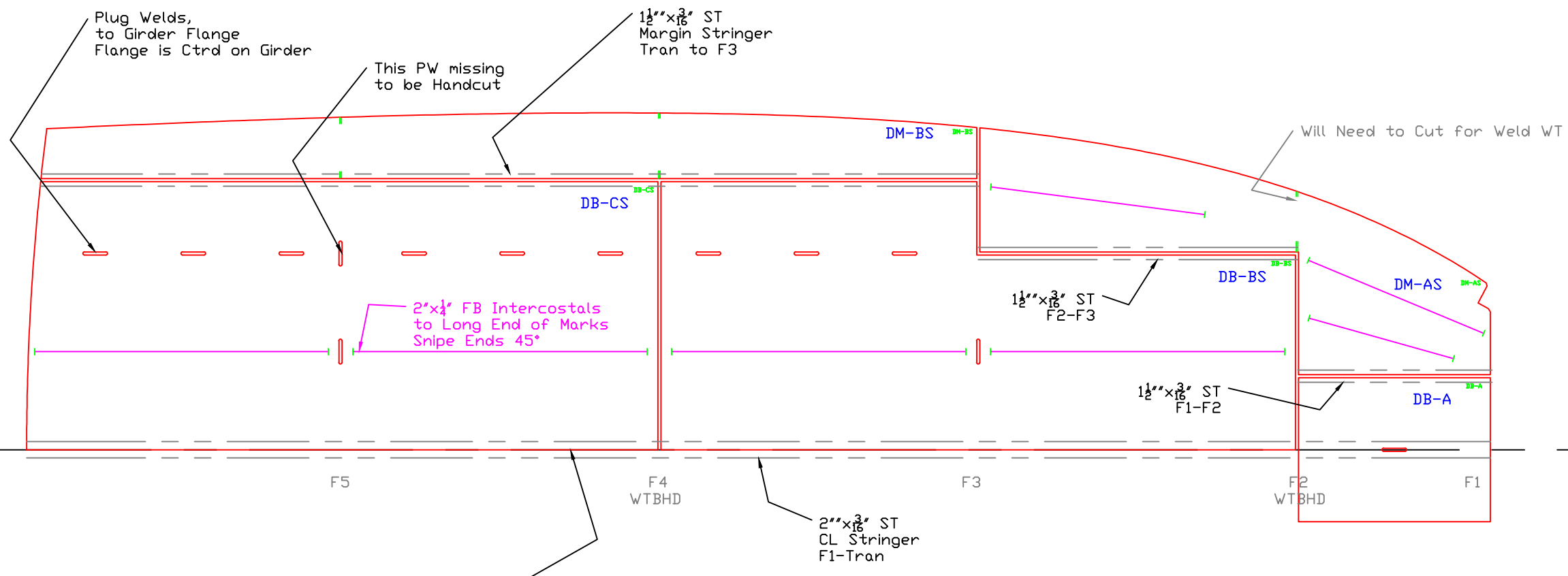
Response Marine, Inc.		SHEET
Newburyport, MA, www.responsemarine.com		DWG NO. 550-2-2

REV.	DESCRIPTION



18.5' x 7 2' Work Skiff		
SIDE DECKS		
SCALE 3/4" = 1'	DES/DWN WAL	DATE 1/14/17
Response Marine, Inc. Newburyport, MA, www.responsemarine.com		SHEET DWG NO. 550-2-3

REV.	DESCRIPTION

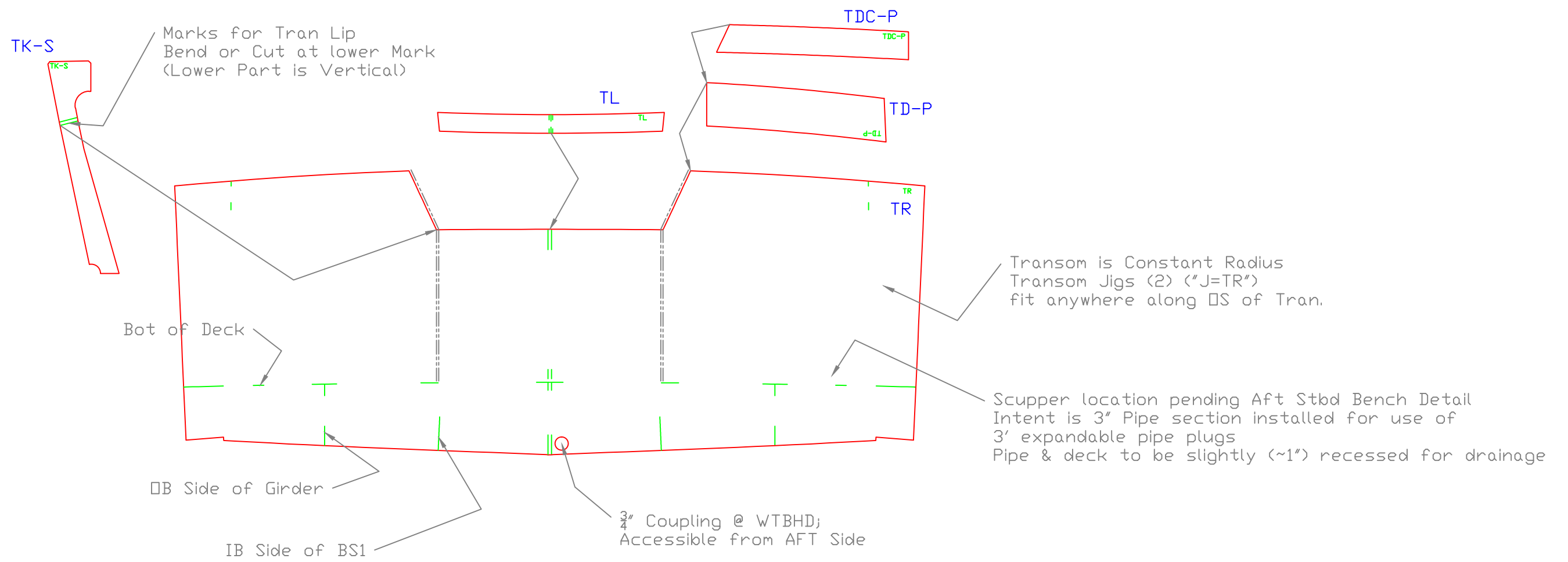


Tight Seam on CL for Trimming
(3/8" Gap at other Seams)

VIEWED FROM BOTTOM
(Stbd Side Shown)

18.5' x 7 2' Work Skiff		
COCKPIT DECK		
SCALE 3/4" = 1'	DES/DWN WAL	DATE 1/14/17
Response Marine, Inc.		SHEET
Newburyport, MA, www.responsemarine.com		DWG NO. 550-2-4

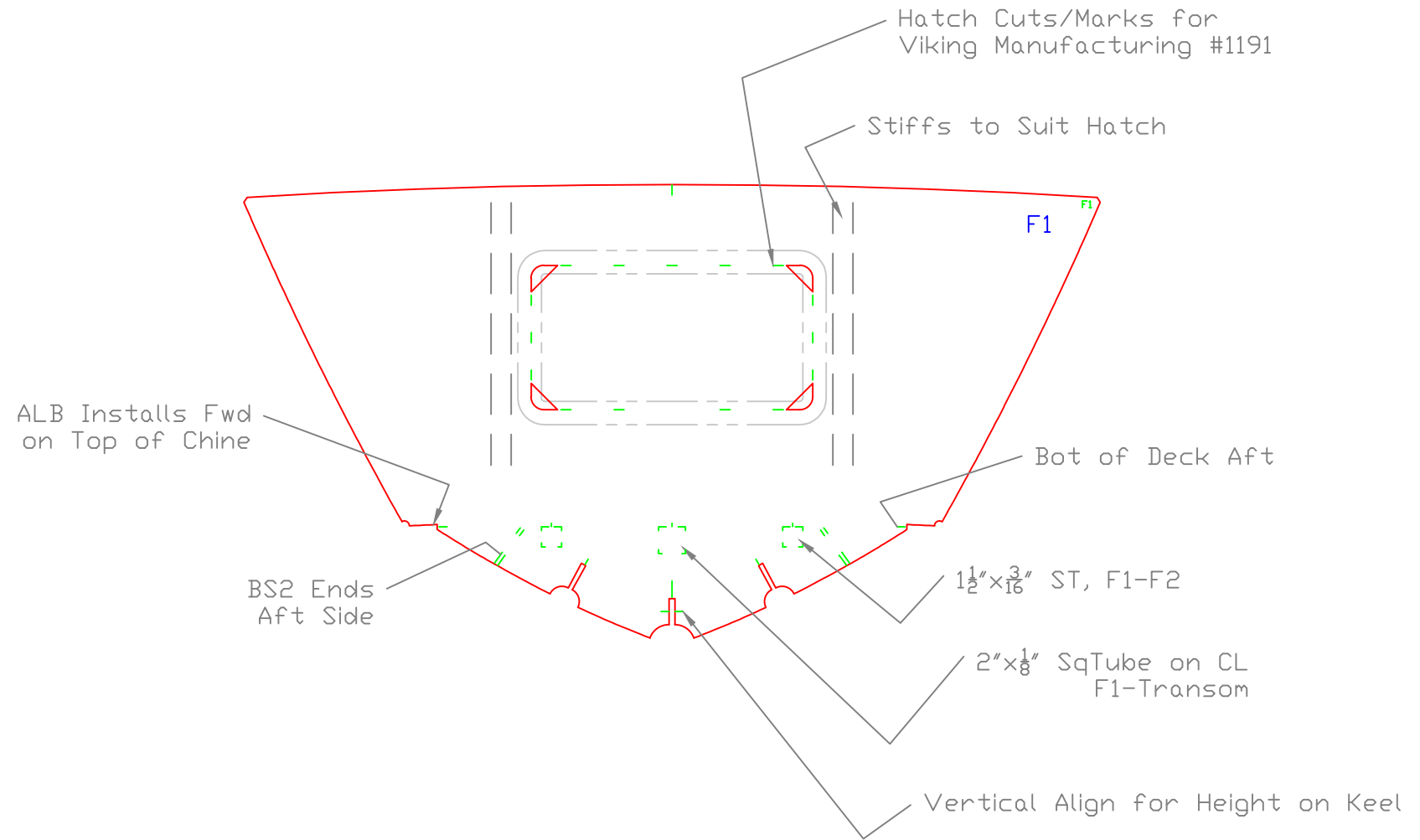
REV.	DESCRIPTION



18.5' x 7 2' Work Skiff		
TRANSOM		
SCALE 3/4" = 1'	DES/DWN	DATE 1/14/17
Response Marine, Inc. Newburyport, MA, www.responsemarine.com		SHEET DWG NO. 550-2-5

REV.	DESCRIPTION

Looking Fwd
Install w/ Marks Aft

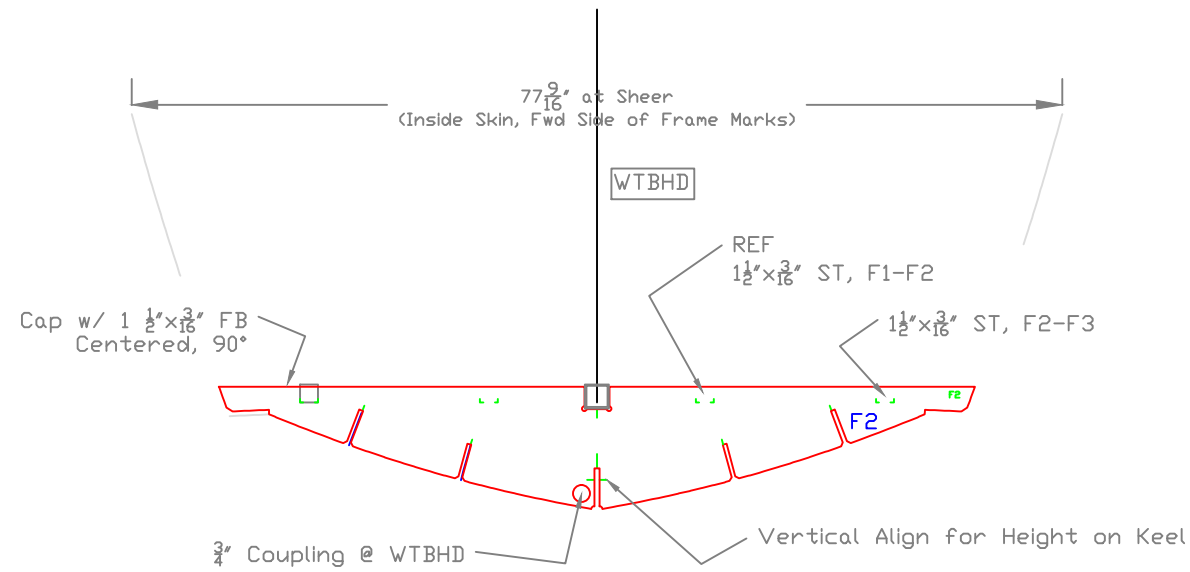


F1

18.5' x 7 2' Work Skiff		
FRAME 1		
SCALE 1" = 1'	DES/DWN	DATE 1/14/17
Response Marine, Inc. Newburyport, MA, www.responsemarine.com		SHEET DWG NO. 550-F-1

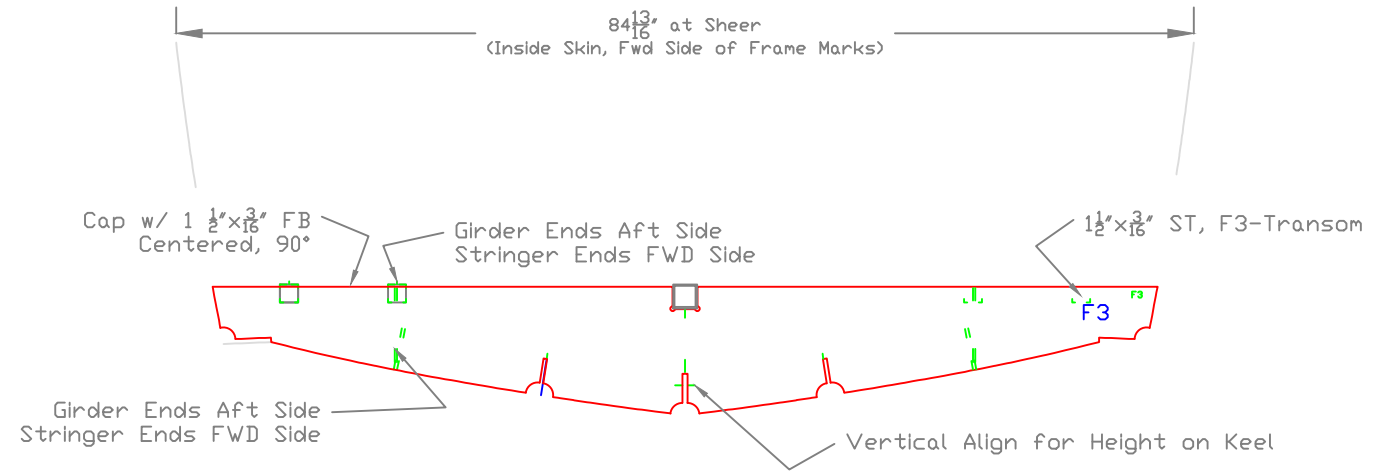
REV.	DESCRIPTION

Looking Fwd
Install w/ Marks Aft



F2

Looking Fwd
Install w/ Marks Aft

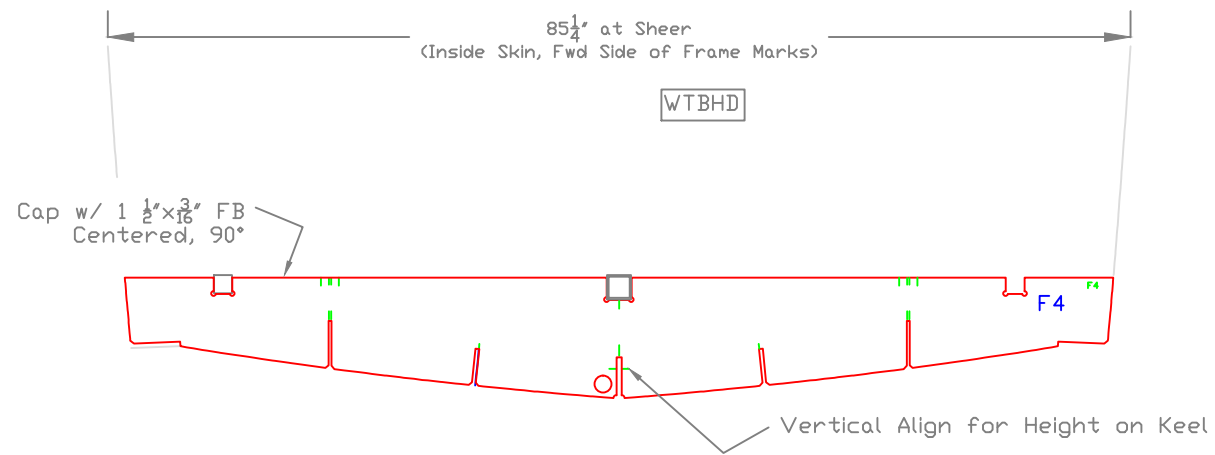


F3

18.5' x 7 2' Work Skiff		
FRAMES 2 & 3		
SCALE 3/4" = 1'	DES/DWN	DATE 1/14/17
Response Marine, Inc. Newburyport, MA, www.responsemarine.com		SHEET
		DWG NO. 550-F-2

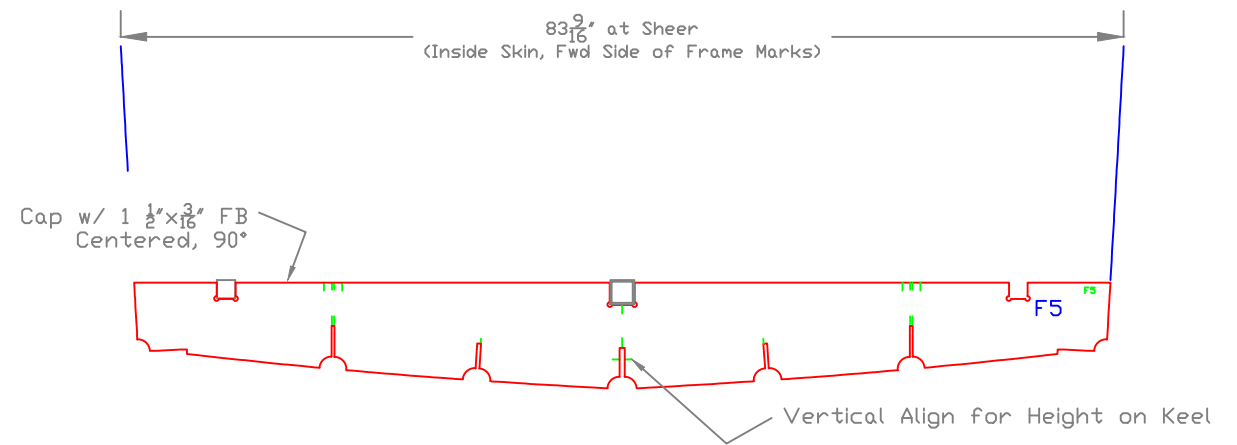
REV.	DESCRIPTION

Looking Fwd
Install w/ Marks Aft



F4

Looking Fwd
Install w/ Marks Aft



F5

18.5' x 7 2' Work Skiff		
FRAMES 4 & 5		
SCALE 3/4" = 1'	DES/DWN	DATE 1/14/17
Response Marine, Inc. Newburyport, MA, www.responsemarine.com		SHEET
		DWG NO. 550-F-3

REV.	DESCRIPTION