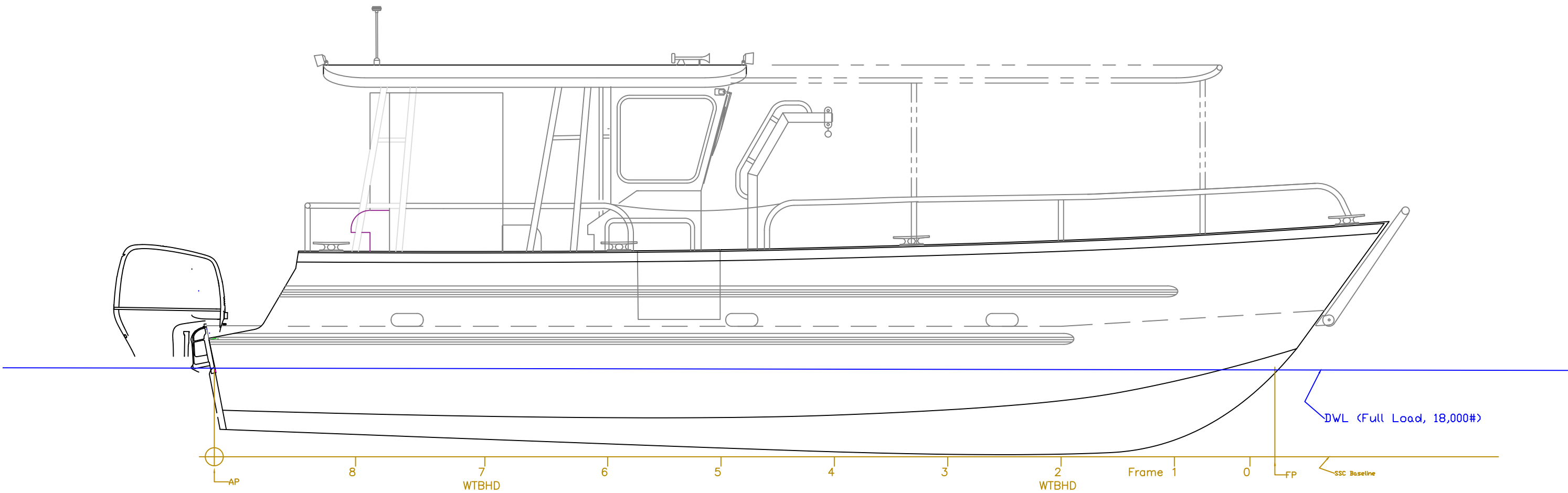


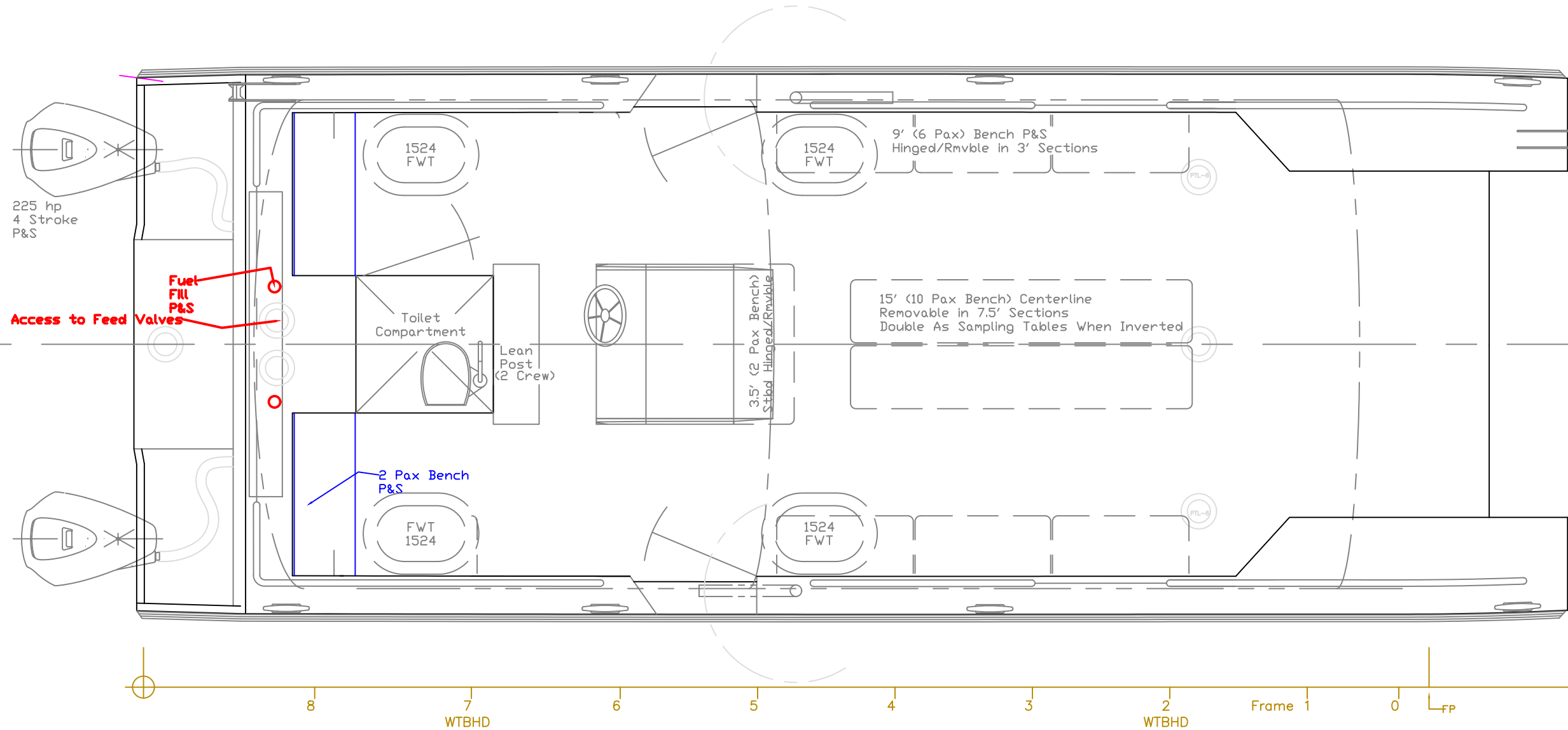
~ Particulars ~
 Hull LOA- 31' 4" (w/o Engines & Door)
 Beam- 11' 10" (w/o Rub Rails)
 Draft-2'4" (Loaded, 18,000 lbs)
 28 Pax + 2 Crew



OUTBOARD PROFILE

31'x12' Landing Craft Cat/Tri		
For: Save The Bay		
SCALE 3/8" = 1'	DES/DWN WAL/JCC	DATE 3/26/20
Response Marine, Inc.		REV 12/7/20
Newburyport, MA www.responsemarine.com		DWG NO. 524A-1,r2

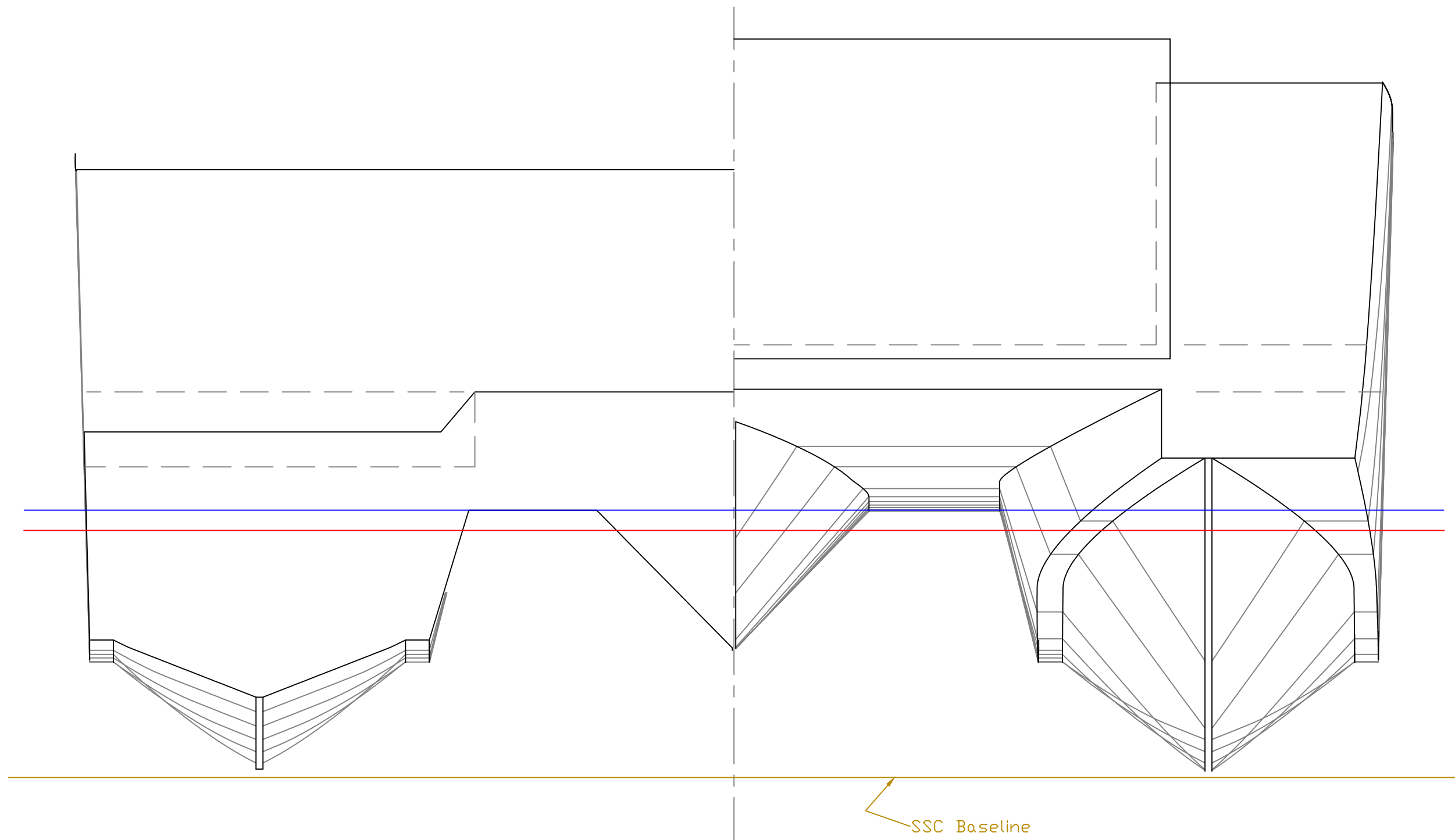
REV.	DESCRIPTION
R1,	7/9/20, Fuel Shift
R2,	12/7/20, WL, Displ. & Draft



OUTBOARD PLAN

31'x12' Landing Craft Cat/Tri		
For: Save The Bay		
SCALE 3/8" = 1'	DES/DWN WAL/JCC	DATE 3/26/20
Response Marine, Inc.		REV 7/9/20
Newburyport, MA www.responsemarine.com		DWG NO. 524A-2,r1

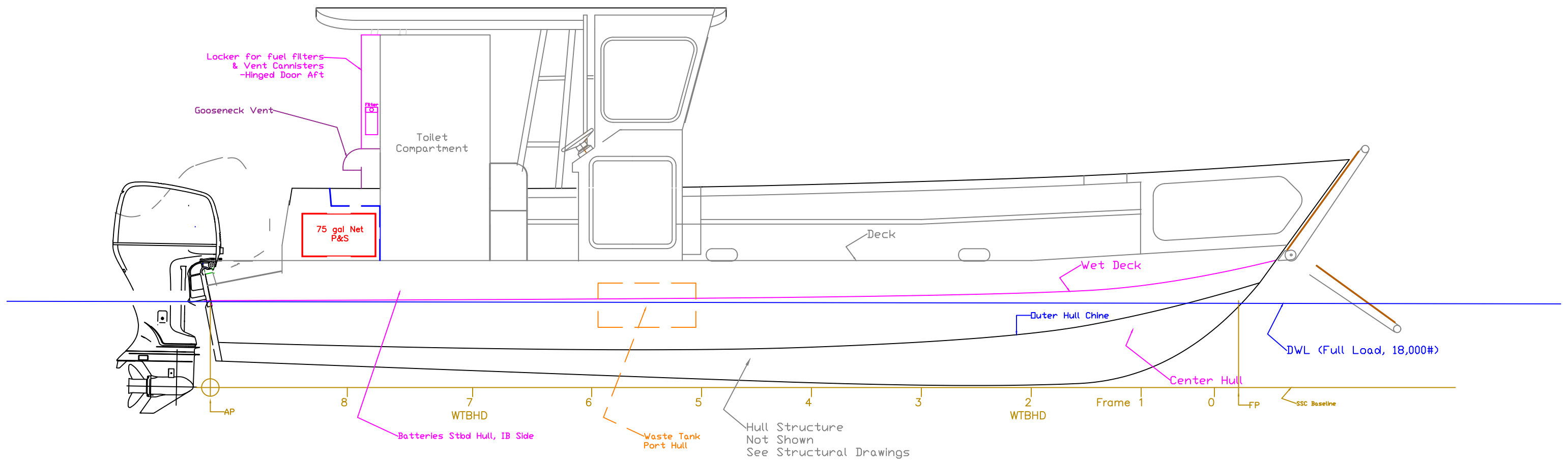
REV.	DESCRIPTION
R1, 7/9/20,	Fuel Shift



Body Plan

31'x12' Landing Craft Cat/Tri		
For: Save The Bay		
SCALE 1" = 1'	DES/DWN WAL/JCC	DATE 3/26/20
Response Marine, Inc. Newburyport, MA, www.responsemarine.com		REV DWG NO. 524A-3

REV.	DESCRIPTION



INBOARD PROFILE

31'x12' Landing Craft Cat/Tri

For: Save the Bay

REV.	DESCRIPTION
R1, 7/9/20,	Fuel Shift
R2, 12/7/20,	added Batt & Waste notes

SCALE	DES/DWN	DATE
3/8" = 1'	WAL/JCC	3/26/20

Response Marine, Inc.	REV 12/7/20
Newburyport, MA, www.responsemarine.com	DWG NO. 524A-4,r2