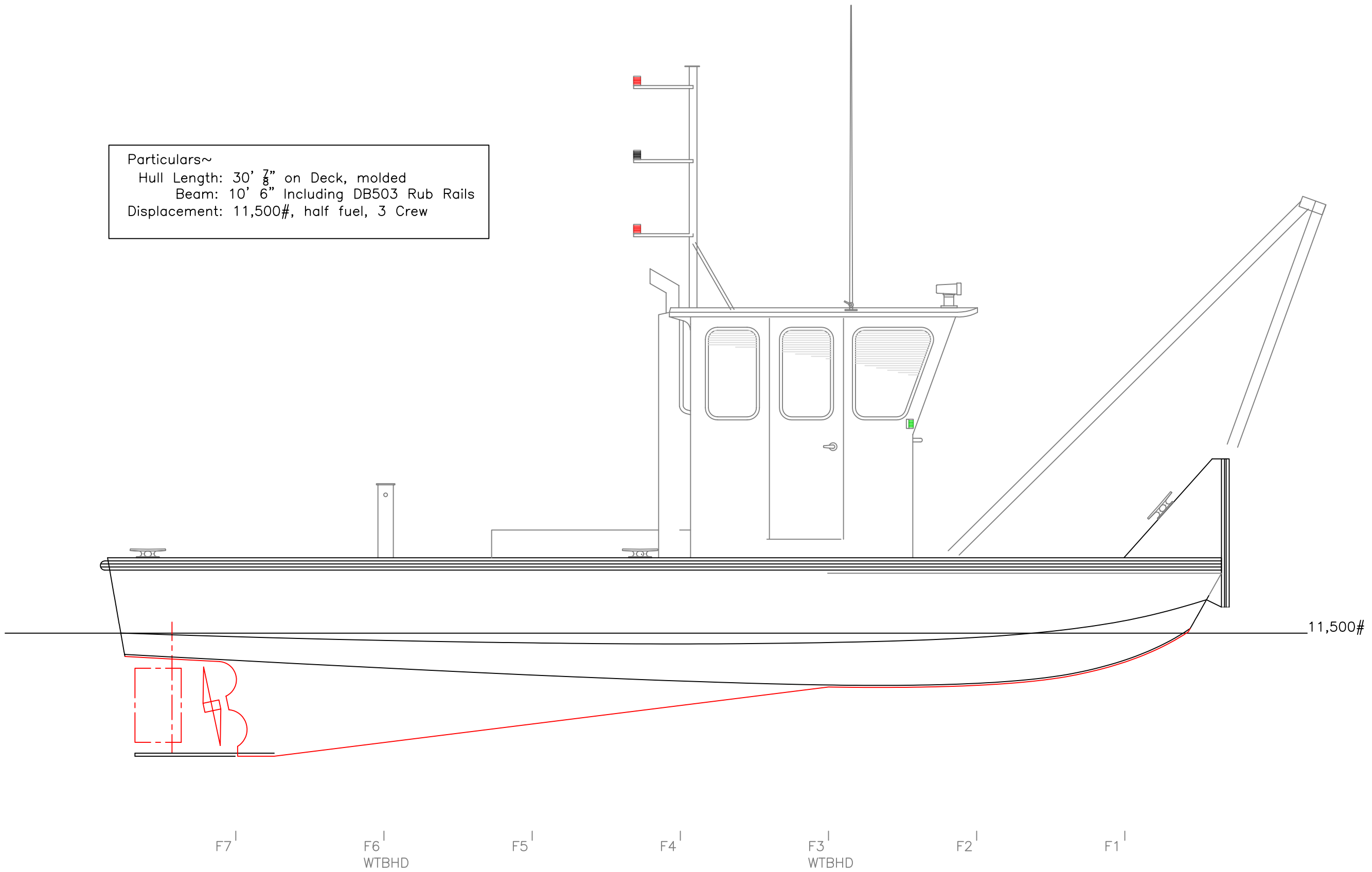
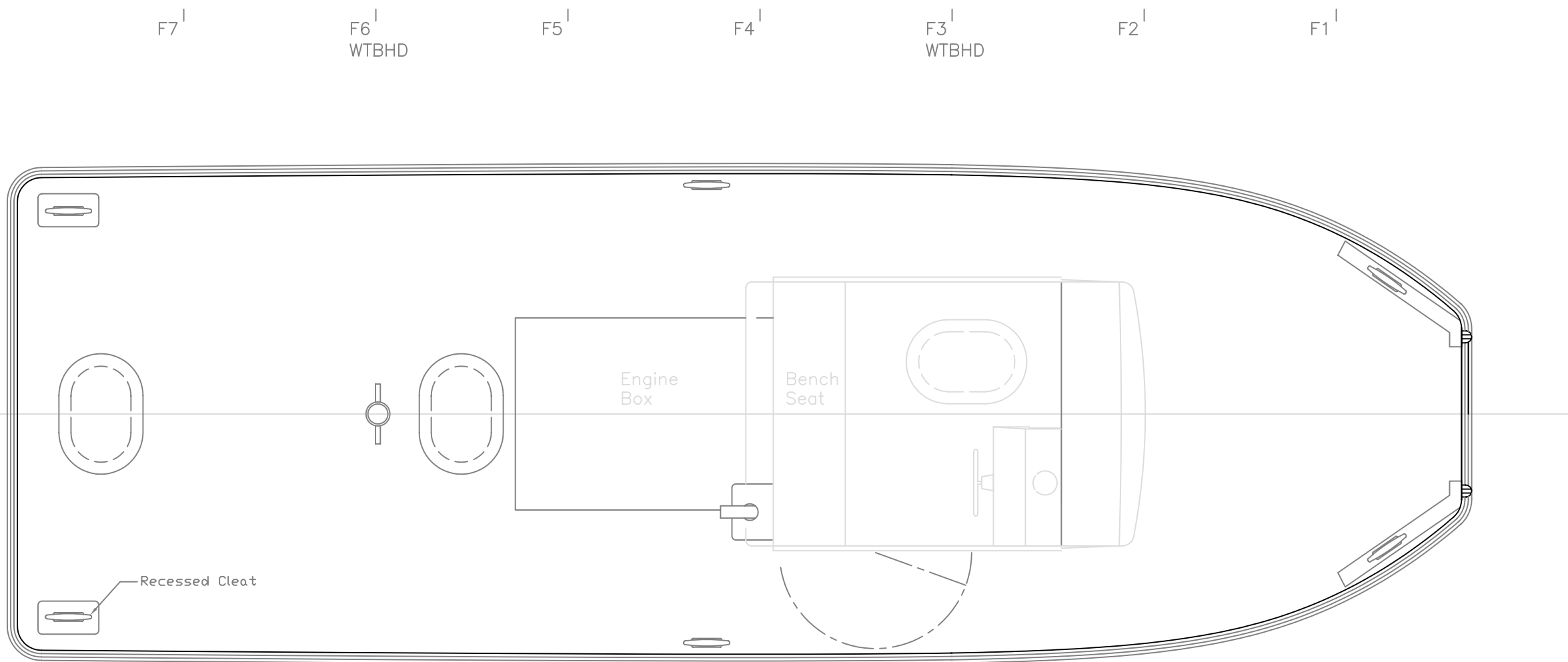


Particulars~
 Hull Length: 30' 7" on Deck, molded
 Beam: 10' 6" Including DB503 Rub Rails
 Displacement: 11,500#, half fuel, 3 Crew



PROFILE		
30'x10' DREDGE		
SOUND MARINE		
SCALE 3/8"=1'	DES/DWN WAL	DATE 10/15/08
Response Marine, Inc. Newburyport, MA, www.responsemarine.com		SHEET DWG NO. 321-01

REV.	DESCRIPTION



DECK PLAN

30' x 10' DREDGE

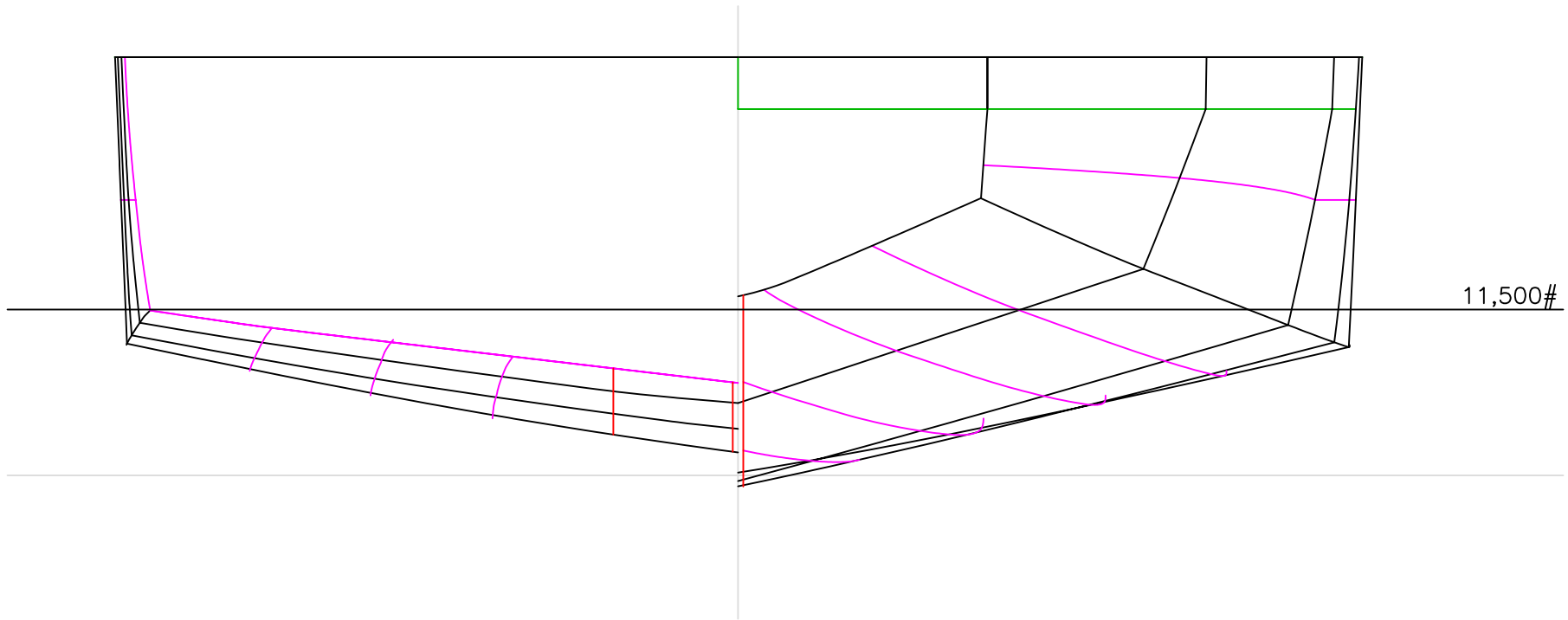
SOUND MARINE

SCALE 3/8"=1'	DES/DWN WAL	DATE 10/10/08
------------------	----------------	------------------

Response Marine, Inc.		SHEET
------------------------------	--	-------

Newburyport, MA, www.responsemarine.com	DWG NO. 321-02
---	-------------------

REV.	DESCRIPTION
------	-------------



BODY PLAN (stations)

30' x 10' DREDGE

SOUND MARINE

SCALE

3/4" = 1'

DES/DWN

WAL

DATE

10/10/08

SHEET

REV.

DESCRIPTION

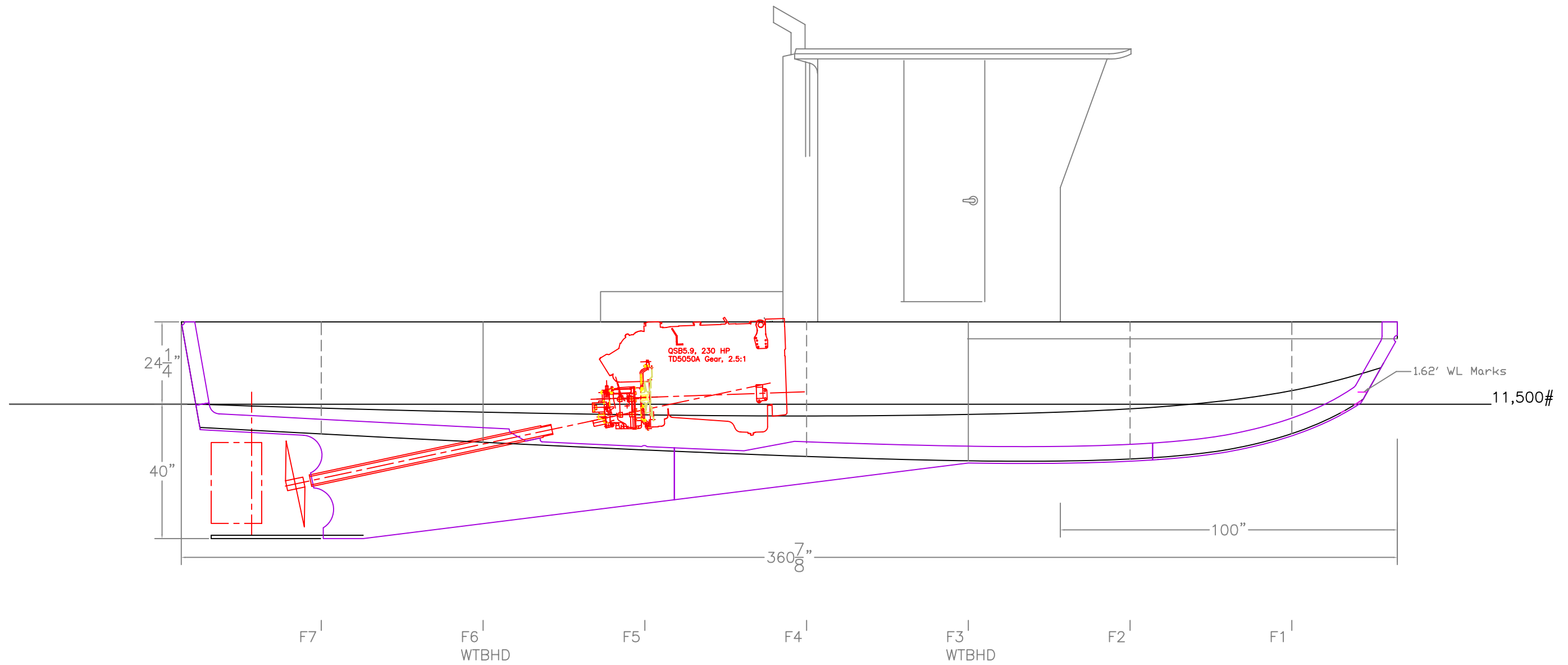
Response Marine, Inc.

Newburyport, MA,

www.responsemarine.com

DWG NO.

321-03



DREDGE 30'; IB PROFILE

SOUND MARINE

SCALE 3/8"=1'	DES/DWN WAL	DATE 10/15/08
------------------	----------------	------------------

Response Marine, Inc.

Newburyport, MA, www.responsemarine.com

SHEET

DWG NO.

321-04

REV.	DESCRIPTION