
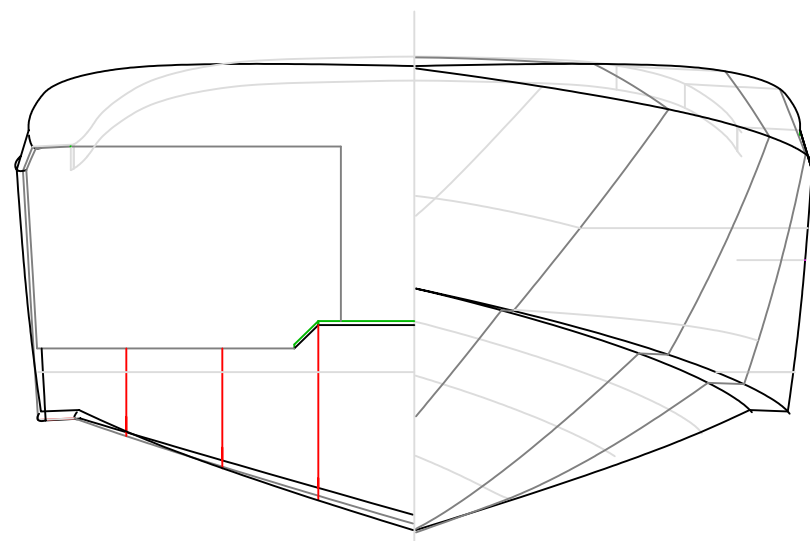
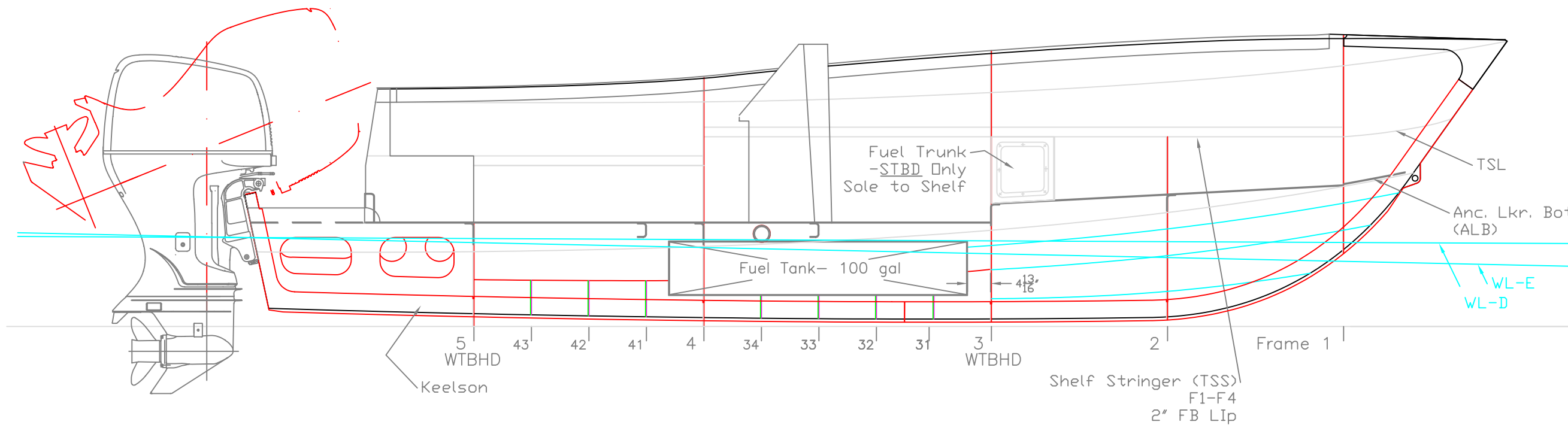



WL-D; 250 Suzuki, 100 gal fuel, 1000# crew, 490# gear  
 WL-E; 250 Suzuki, 50 gal fuel, 730# crew, 50# gear

	OUTB'D PROFILE & PLAN		
	BONES BOAT CO. 22'		
	SCALE 1/2" = 1'	DES/DWN WAL	DATE 6/16/09
	<b>Response Marine, Inc.</b> Newburyport, MA, www.responsemarine.com		SHEET DWG NO. 328-01



Body Plan - Frames

	INB'D PROFILE BONES BOAT CO. 22'		
	SCALE 1/2" = 1'	DES/DWN WAL	DATE 6/16/09
	Response Marine, Inc. Newburyport, MA, www.responsemarine.com		REV 3/11/10
			DWG NO. 328-2