

Response Marine, Inc.

Plaz Parts for Sound Marine 32'  
File: RMI\des\Sound\Huntington 32\  
revised:6/4/07

Print Date: 6/4/07

**3/16" Parts- 5052**

<u>Part #</u>	<u>Pieces</u>	<u>Description</u>	<u>Stock</u>	<u>Bending</u>
F6U	2	Frame 6 Upper		Y
F7U	2	Frame 7 Upper		Y
FD	1	Foredeck		
FDC	1	Foredeck Coaming		
J-TA	1	Jig- Tunnel Fwd		
J-TB	1	Jig- Tunnel Aft		
SDC-B	2	Side Deck Coaming, Aft		
SDC-J	2	Side Deck Coaming, Jog		
T-1	4	Tank Ends		
T-2	2	Tank Body- Lower/OB		Y
T-3	2	Tank Body- Top/IB		Y
T-4	2	Tank Baffle		
V	2	Vent Panel		
VF	2	Vent Frame		Y
	26	Sub Total		

**3/16" Parts- 5083/86**

<u>Part #</u>	<u>Pieces</u>	<u>Description</u>	<u>Stock</u>	<u>Bending</u>
F0	2	Topsides Frame fwd		
F1	1	Frame 1		
F1U	2	Frame 1, Upper		
F2	1	Frame 2		
F-2U	2	Frame 2, upper		
F3	1	Frame 3		
F3U	2	Frame 3, Upper		
F4	1	Frame 4		
F4U	2	Frame 4, Upper		
F5	1	Frame 5		
F5U	2	Frame 5, upper		
F6	1	Frame 6		
F7	1	Frame 7		
F8	1	Frame 8		
F9	1	Frame 9		
SDA	2	Side Deck, Fwd		
SDB	2	Side Deck, Aft		
SDC-A	2	Side Deck Coaming, Fwd Jog		
SG	2	SheerGuard, F4- Stem		
TS-A	2	Topsides, forward		
TS-B	2	Topsides, aft, Stbd		

33 Sub Total

**1/4" Parts- 5052**

<u>Part #</u>	<u>Pieces</u>	<u>Description</u>	<u>Stock</u>	<u>Bending</u>
DM-A	2	Deck Margin, Fwd		
DM-B	2	Deck Margin, Mid		
DM-C	2	Deck Margin, Aft		
	6	Sub Total		

**1/4" Parts- 5083/5086**

<u>Part #</u>	<u>Pieces</u>	<u>Description</u>	<u>Stock</u>	<u>Bending</u>
B-A	2	Bottom Plate, Fwd		
B-B	2	Bottom Plate, Aft		
BS-1A	2	Bottom Longitudinal 1 (fwd)		
BS-2A	2	Bottom Longitudinal 2 (fwd)		
BS-2B	2	Bottom Longitudinal 2 (aft)		
BS-3A	2	Bottom Longitudinal 3 (fwd)		
BS-3B	2	Bottom Longitudinal 3 (aft)		
BS-4A	2	Bottom Longitudinal 4 (fwd)		
BS-4B	2	Bottom Longitudinal 4 (mid)		
BS-5A	2	Bottom Longitudinal 5 (fwd)		
BS-5B	2	Bottom Longitudinal 5 (aft)		
F3D	2	Frame 3 Doubler		
S	1	Stem		Y
T	1	Transom		Y
TSS-1A	2	Topside Stringer Fwd		
TSS-1B	2	Topside Stringer, Aft		
	30	Sub Total		

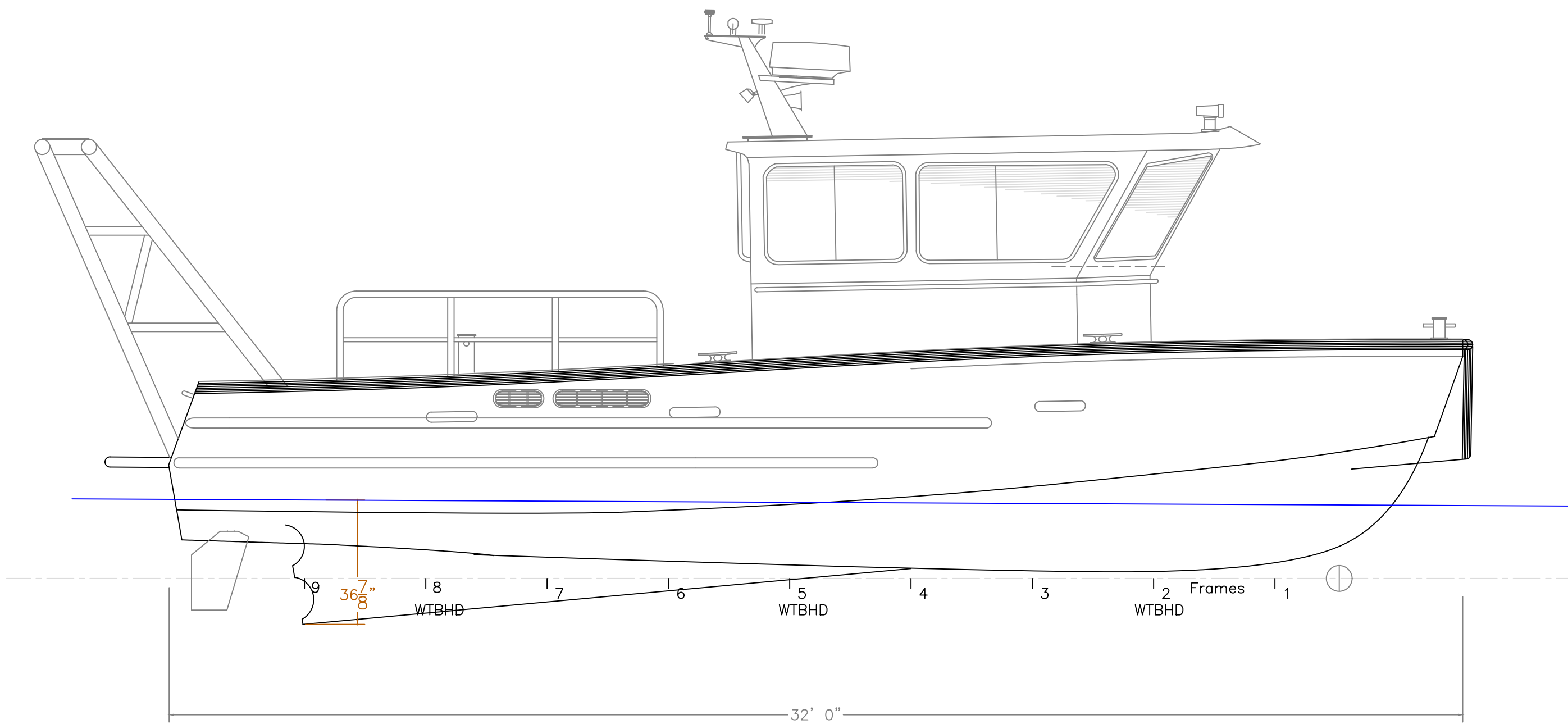
**3/8" Parts, 5083/5086**

<u>Part #</u>	<u>Pieces</u>	<u>Description</u>	<u>Stock</u>	<u>Bending</u>
C-A	2	Chine Fwd		
C-B	2	Chine Aft		
EG-A	2	Engine Girder Fwd		
EG-B	2	Engine Girder Mid		
EG-C	2	Engine Girder Aft		
GF-1	2	Girder Flange		
GF-2	2	Girder Flange		
GF-3	2	Girder Flange		
GF-4	2	Girder Flange		
GF-5	2	Girder Flange		
GF-6	2	Girder Flange		
GF-7	2	Girder Flange		
GF-8	2	Girder Flange		
TA	1	Girder Flange		Y
TB	1	Girder Flange		Y

28 Sub Total

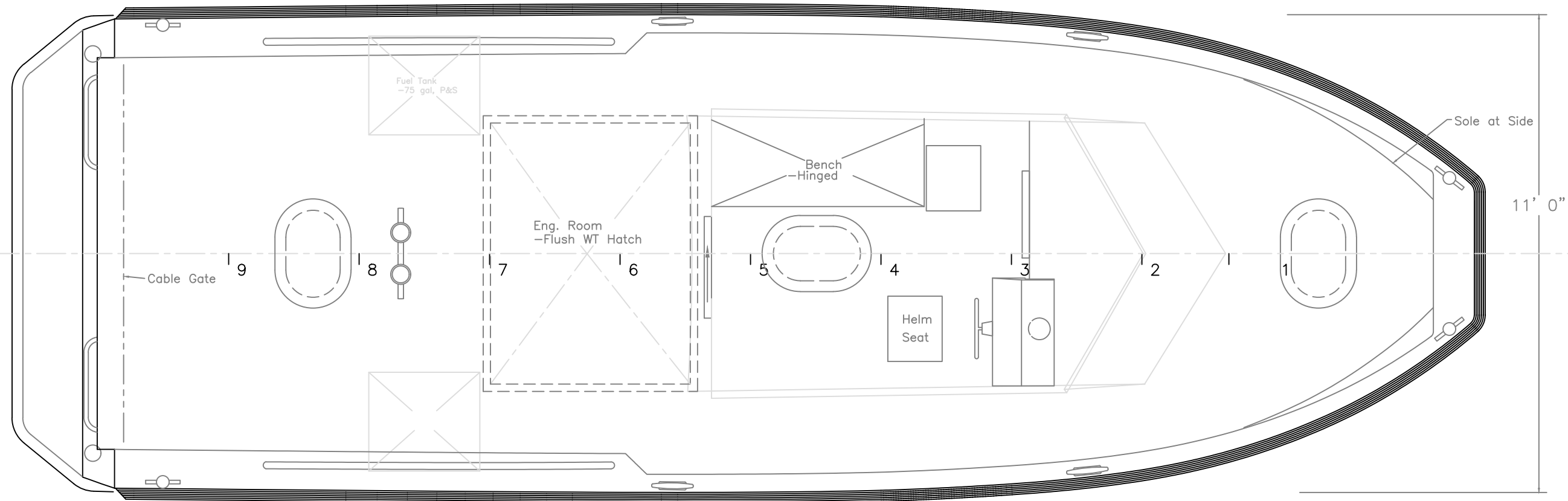
**1" Parts, 5083/5086**

<u>Part #</u>	<u>Pieces</u>	<u>Description</u>	<u>Stock</u>	<u>Bending</u>
K-A	1	Keel, Stem		
K-B	1	Keel, Fwd		
K-C	1	Keel, Mid		
K-D	1	Keel, Aft		
	4	Sub Total		
	127	Total Cut Parts		



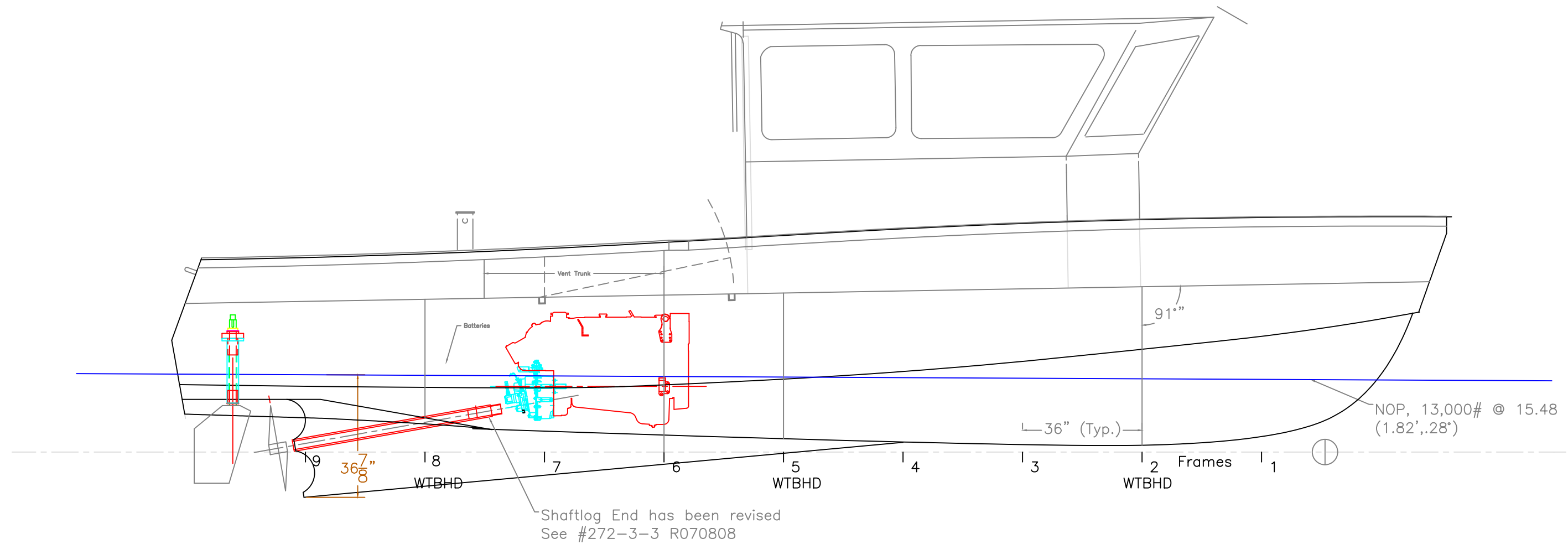
320-SI; OUTBOARD PROFIL		
SOUND MARINE		
SCALE 3/8"=1'	DES/DWN WAL	DATE 6/15/07
<b>Response Marine, Inc.</b> Newburyport, MA, <a href="http://www.responsemarine.com">www.responsemarine.com</a>		SHEET DWG NO. 272-01

REV.	DESCRIPTION



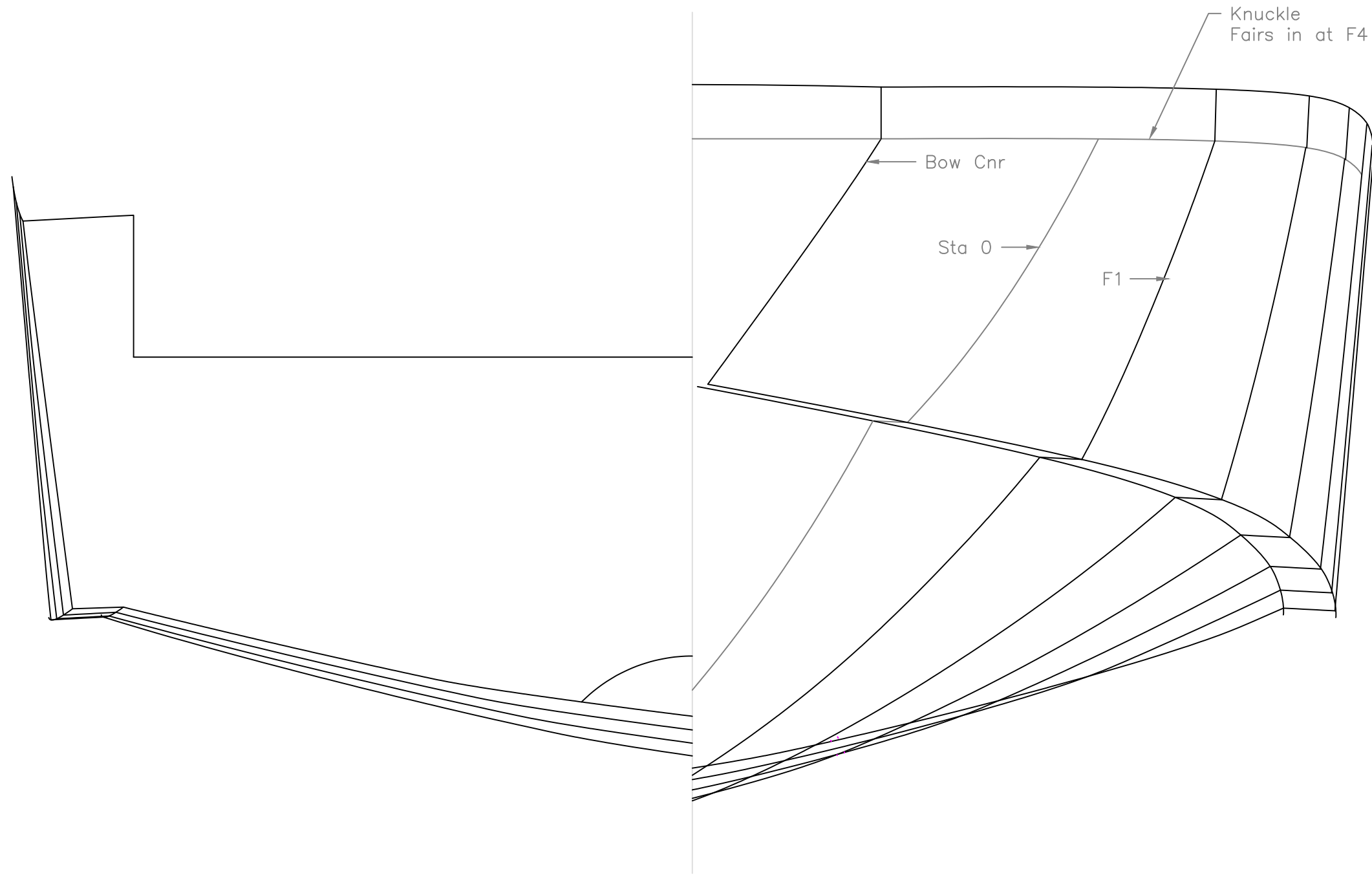
320 SI; ARRANGEMENT		
SOUND MARINE		
SCALE 3/8" = 1'	DES/DWN WAL	DATE 6/15/07
<b>Response Marine, Inc.</b> Newburyport, MA, <a href="http://www.responsemarine.com">www.responsemarine.com</a>		SHEET DWG NO. 272-02

REV.	DESCRIPTION



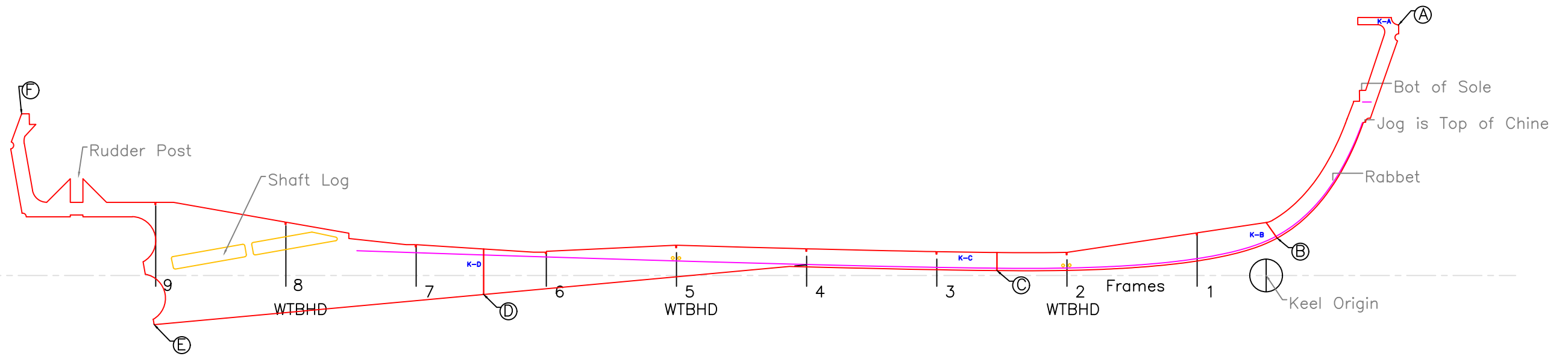
320-SI; INBOARD PROFILE		
SOUND MARINE		
SCALE 3/8"=1'	DES/DWN WAL	DATE 6/15/07
<b>Response Marine, Inc.</b> Newburyport, MA, www.responsemarine.com		SHEET DWG NO. 272-03

REV.	DESCRIPTION



BODY PLAN		
320-SI- SOUND MARINE		
SCALE 1"=1'	DES/DWN WAL	DATE 6/14/07
<b>Response Marine, Inc.</b> Newburyport, MA, www.responsemarine.com		SHEET DWG NO. 272-04

REV.	DESCRIPTION

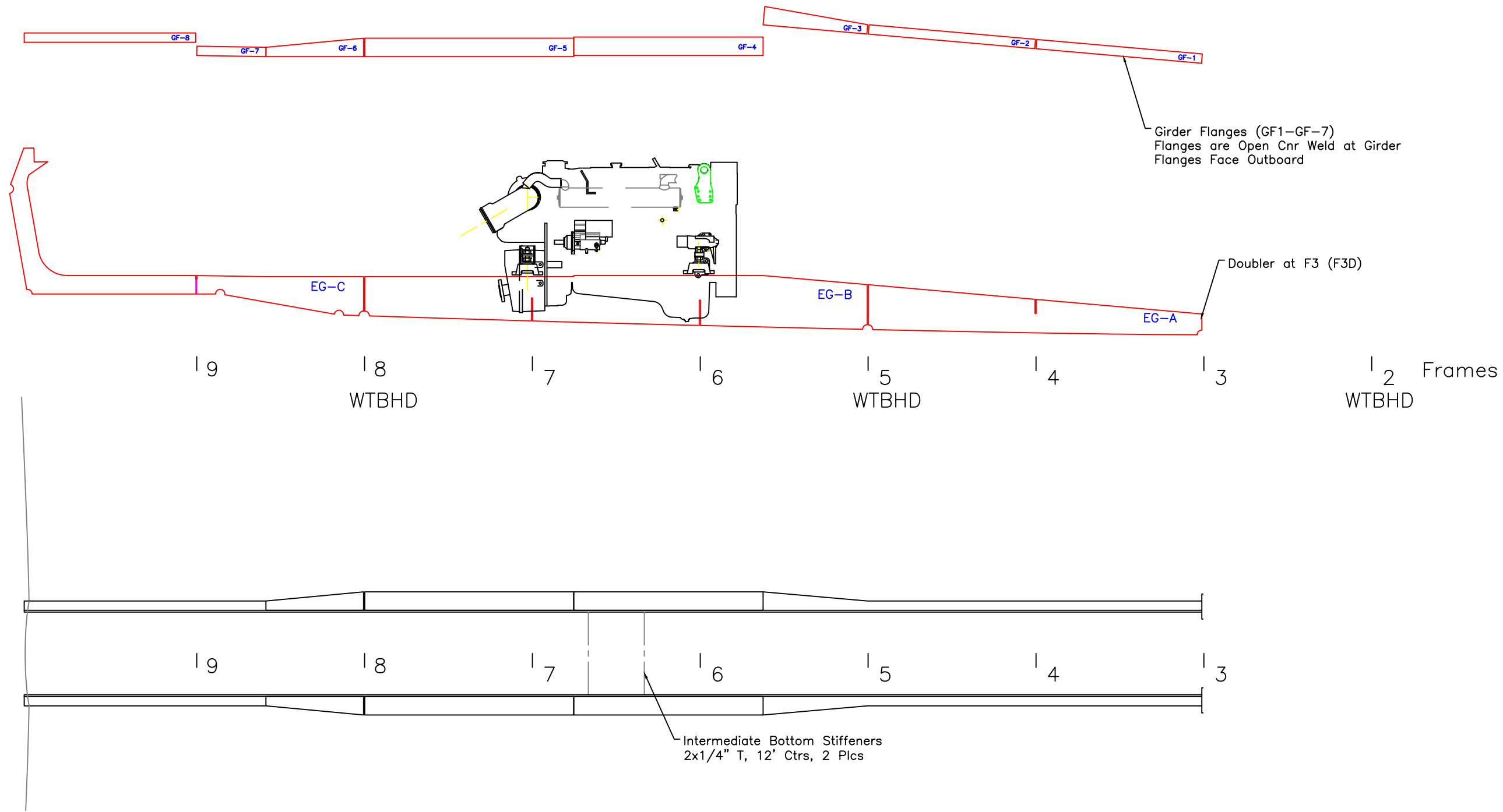


KEEL POINTS									
#272, Sound-Huntington 32									
Response Marine, I 6/14/07									
	Inches- sixteenths			ALIGNED (Inches-sixteenths)					
	Horizontal	Vertical		A	B	C	D	E	
A to Origin			A to						
B to Origin			B to						
C to Origin			C to						
D to Origin			D to						
E to Origin			E to						
F to Origin			F to						
	Millimeters			ALIGNED (Millimeters)					
	Horizontal	Vertical		A	B	C	D	E	
A to Origin			A to						
B to Origin			B to						
C to Origin			C to						
D to Origin			D to						
E to Origin			E to						
F to Origin			F to						

320-SI; KEEL LAYOUT		
SOUND MARINE		
SCALE 3/8"=1'	DES/DWN WAL	DATE 6/14/07
Response Marine, Inc.		SHEET
Newburyport, MA, www.responsemarine.com		DWG NO. 272-2-

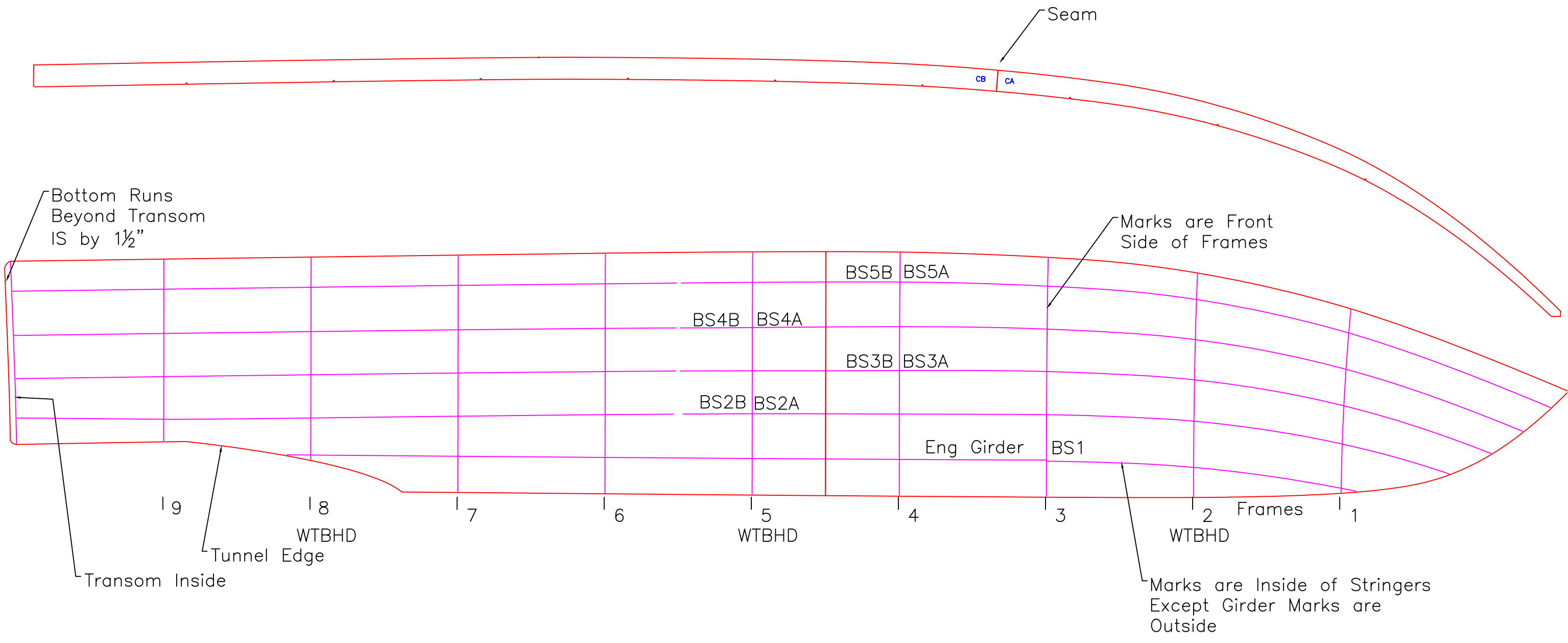
REV.	DESCRIPTION





320-SI; ENGINE GIRDERS		
SOUND MARINE		
SCALE 1/2"=1'	DES/DWN WAL	DATE 6/14/07
<b>Response Marine, Inc.</b> Newburyport, MA, www.responsemarine.com		SHEET DWG NO. 272-2-

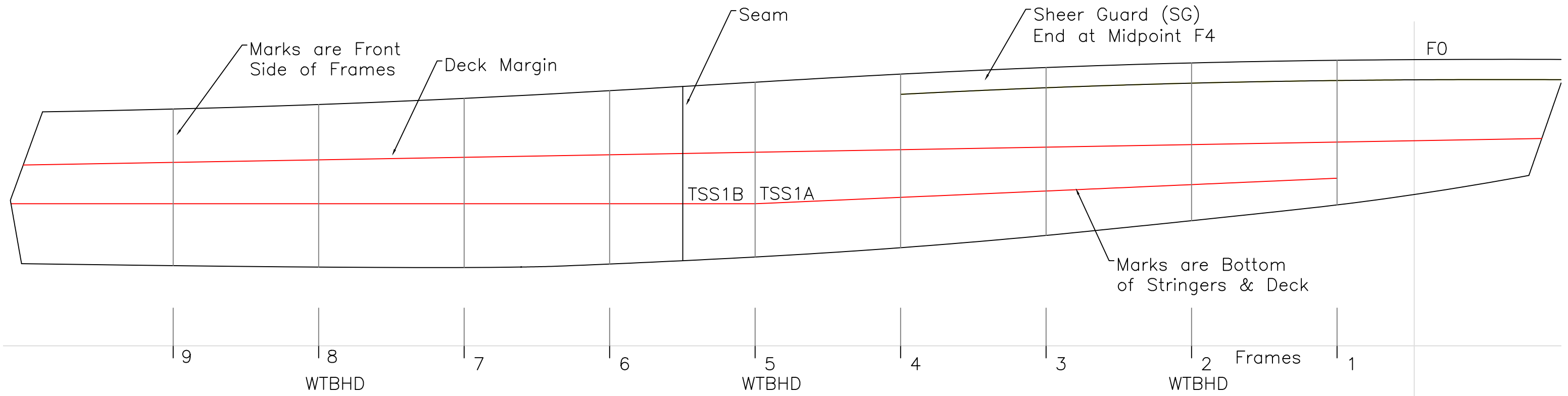
REV.	DESCRIPTION



DEVELOPED BOTTOM & CHINE SHOWN

320-SI; BOTTOM LAYOUT		
SOUND MARINE		
SCALE 1/2"=1'	DES/DWN WAL	DATE 6/14/07
<b>Response Marine, Inc.</b> Newburyport, MA, www.responsemarine.com		SHEET DWG NO. 272-2-

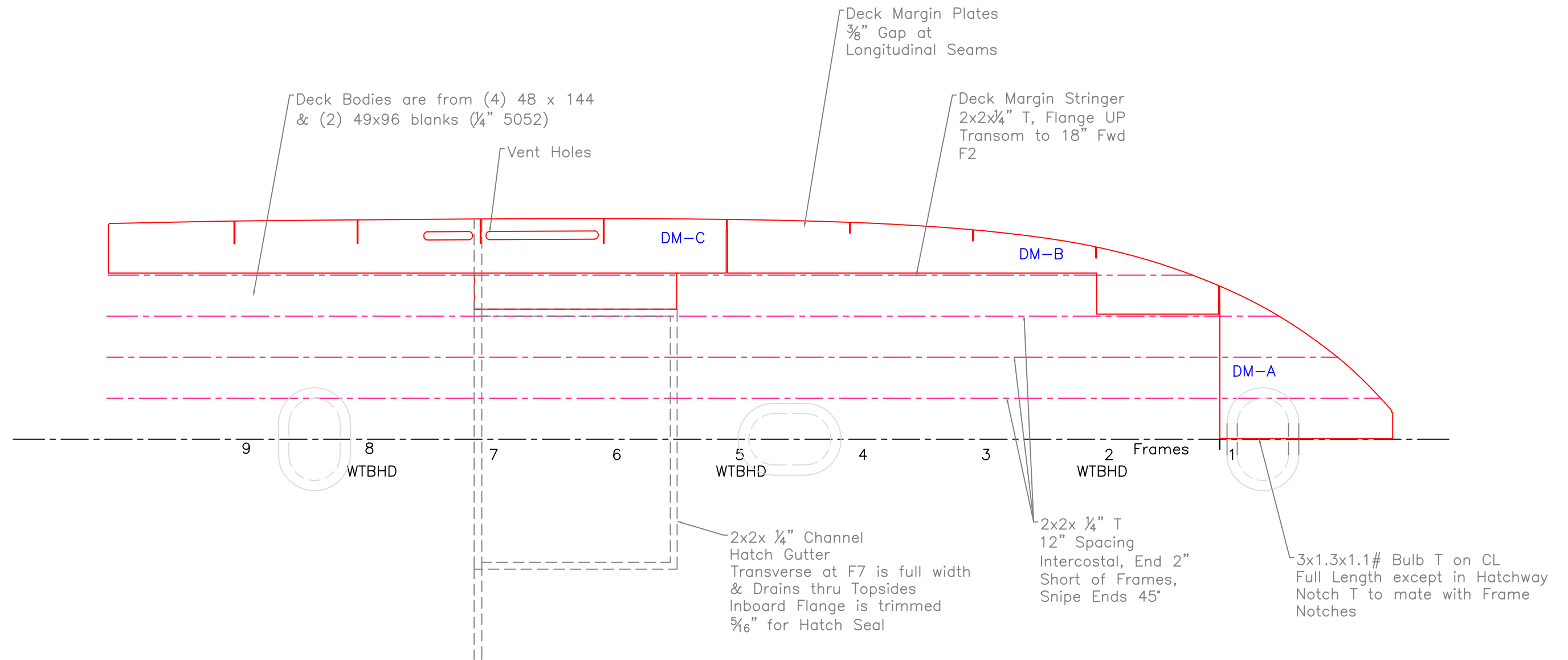
REV.	DESCRIPTION



PROFILE VIEW

320-SI; TOPSIDE LAYOUT		
SOUND MARINE		
SCALE 1/2"=1'	DES/DWN WAL	DATE 6/14/07
<b>Response Marine, Inc.</b> Newburyport, MA, www.responsemarine.com		SHEET DWG NO. 272-2-

REV.	DESCRIPTION

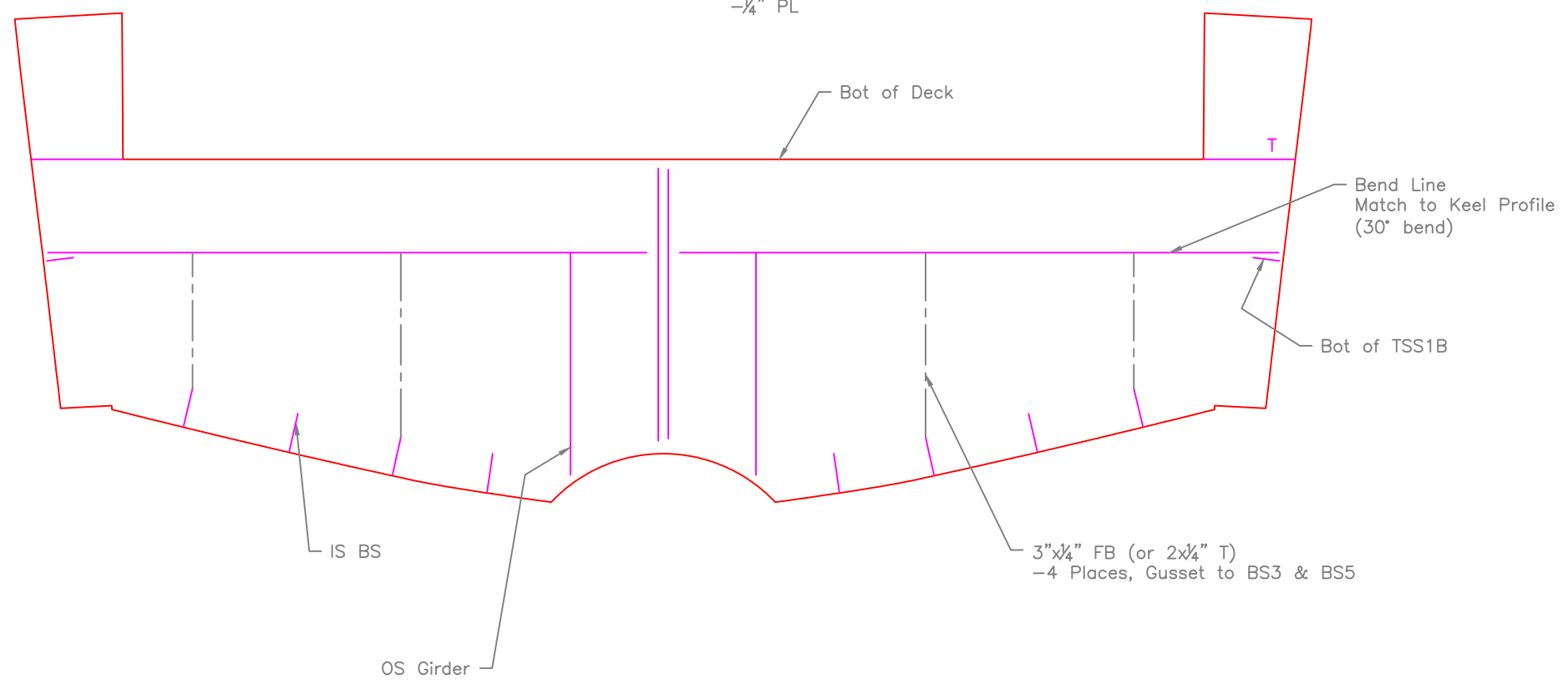


320-SI; DECK LAYOUT		
SOUND MARINE		
SCALE 3/8"=1'	DES/DWN WAL	DATE 6/4/07
<b>Response Marine, Inc.</b> Newburyport, MA, www.responsemarine.com		SHEET DWG NO. 272-2-

REV.	DESCRIPTION

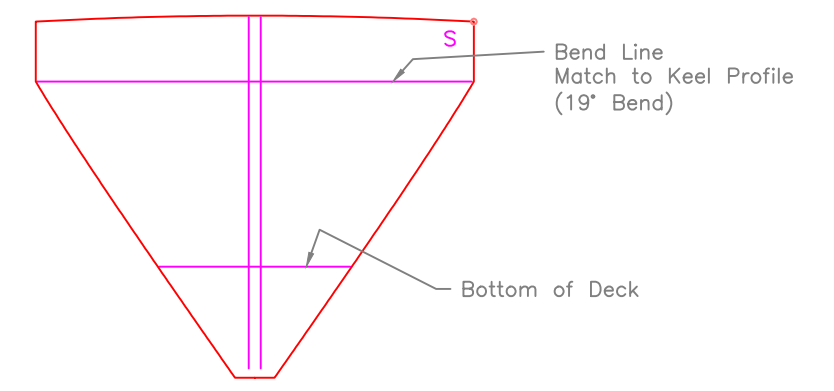
# TRANSOM

-1/4" PL



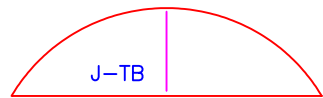
# STEM

-1/4" PL

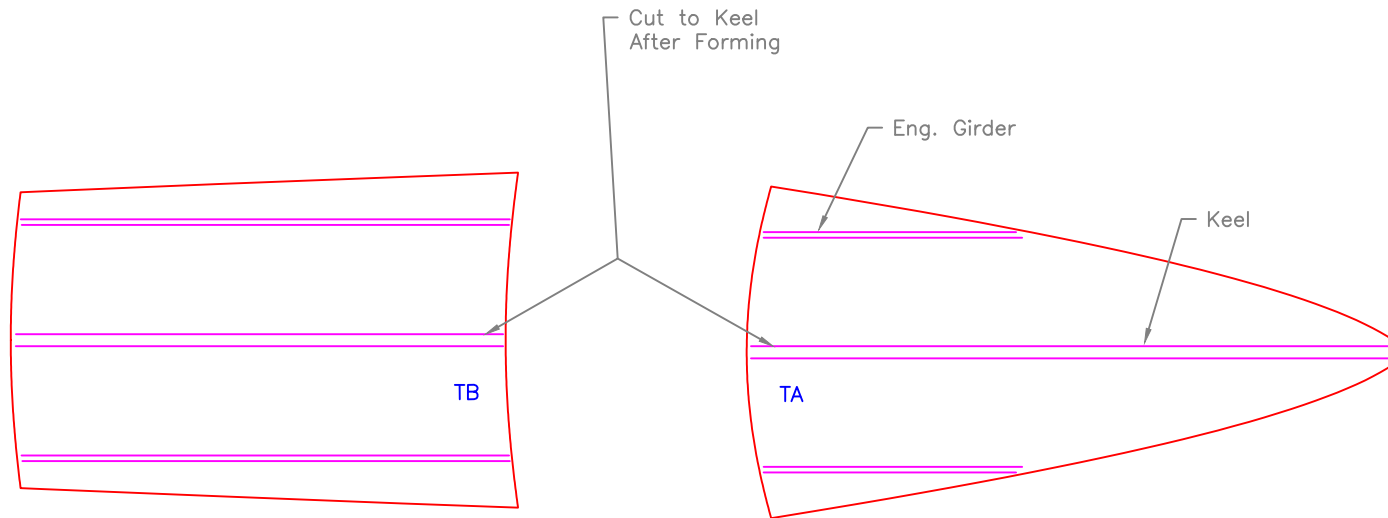


320-SI; TRANSOM & STEM		
SOUND MARINE		
SCALE 3/4"=1'	DES/DWN WAL	DATE 6/15/07
<b>Response Marine, Inc.</b> Newburyport, MA, www.responsemarine.com		SHEET 272-2-6

REV.	DESCRIPTION

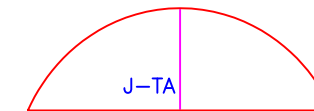


Jig Tunnel Aft, 90 off plate, from section view



Tunnel Aft  
-3/8" PL

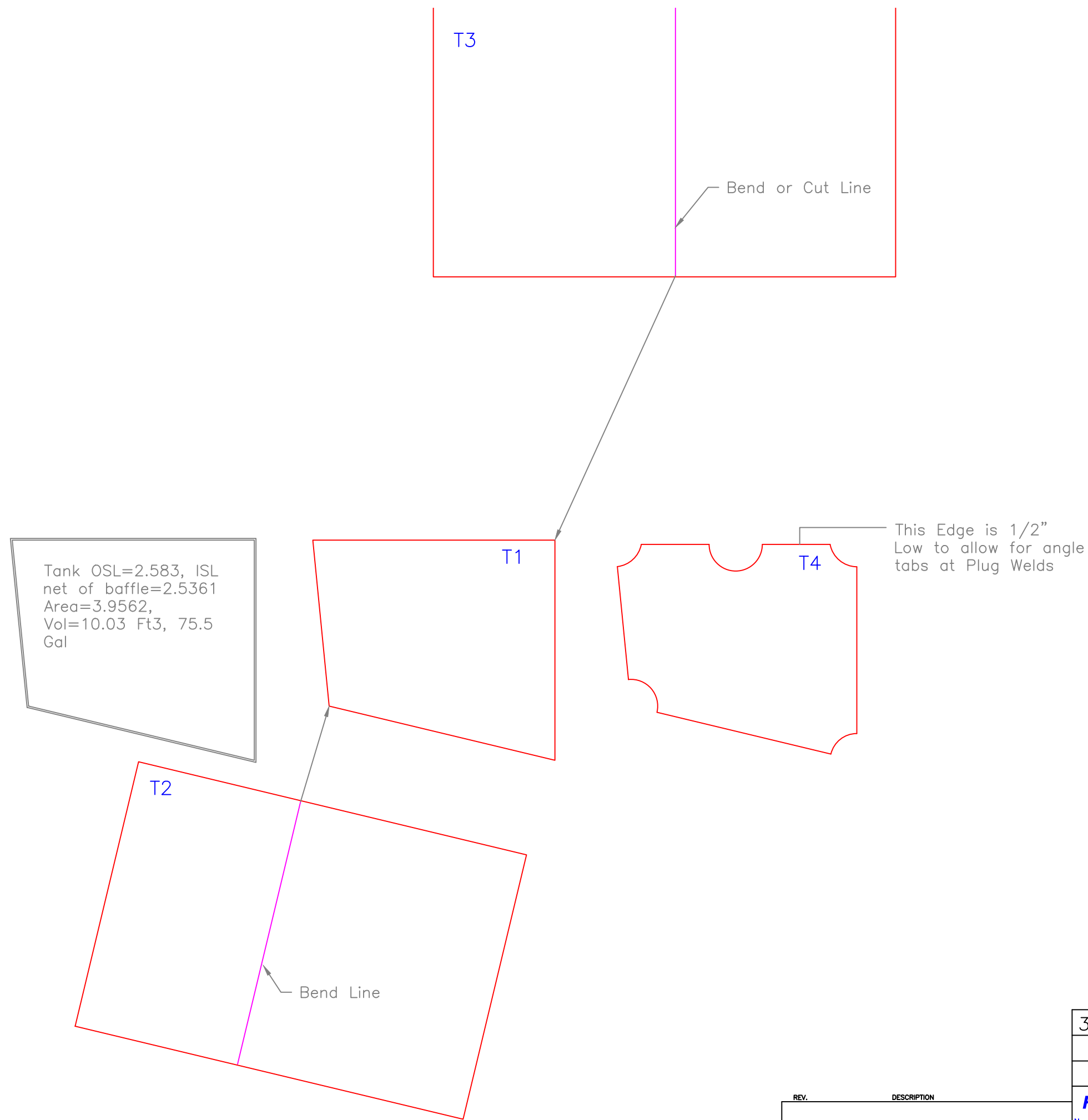
Tunnel Fwd  
-3/8" PL



Jig Tunnel Fwd, 90 off Plate

320-SI; TUNNEL PARTS		
SOUND MARINE		
SCALE 3/4"=1'	DES/DWN WAL	DATE 6/15/07
<b>Response Marine, Inc.</b> Newburyport, MA, www.responsemarine.com		SHEET DWG NO. 272-2-;

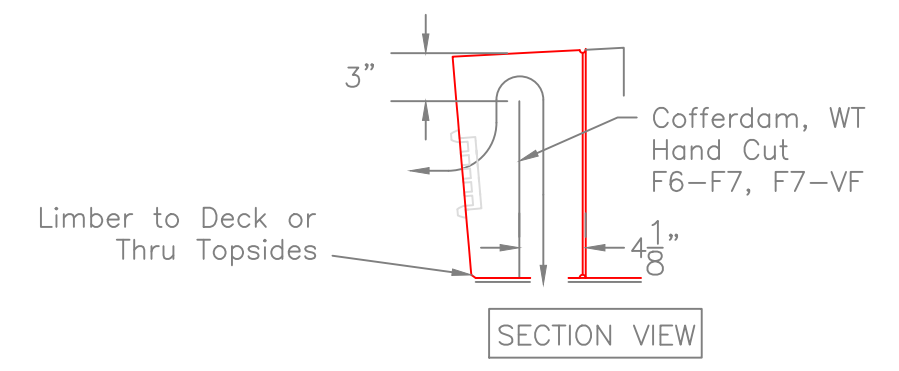
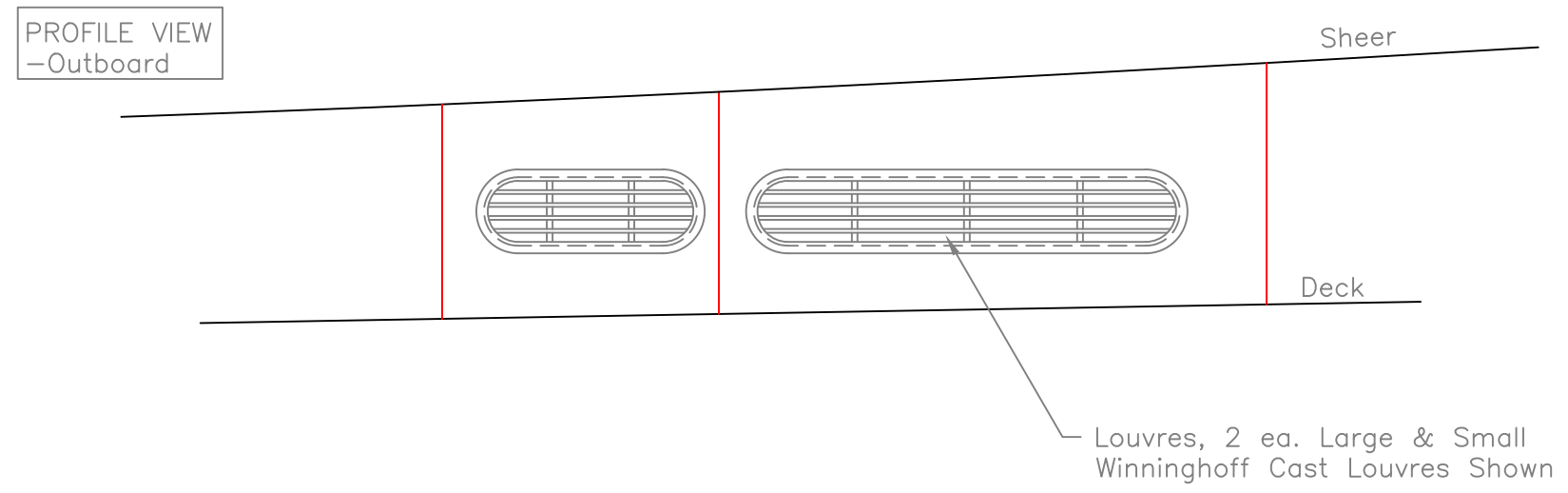
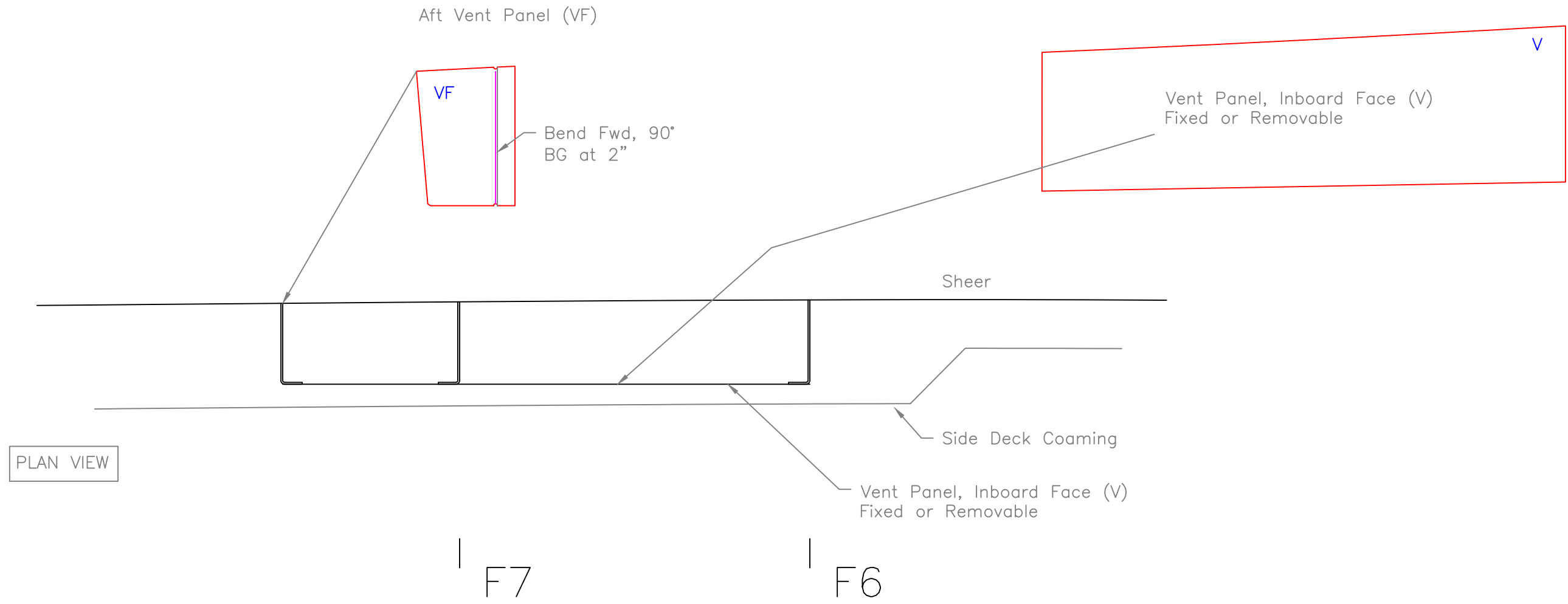
REV.	DESCRIPTION



Tank OSL=2.583, ISL  
 net of baffle=2.5361  
 Area=3.9562,  
 Vol=10.03 Ft3, 75.5  
 Gal

320-SI; FUEL TANKS		
SOUND MARINE		
SCALE 1"=1'	DES/DWN WAL	DATE 6/15/07
<b>Response Marine, Inc.</b> Newburyport, MA, www.responsemarine.com		SHEET DWG NO. 272-3-

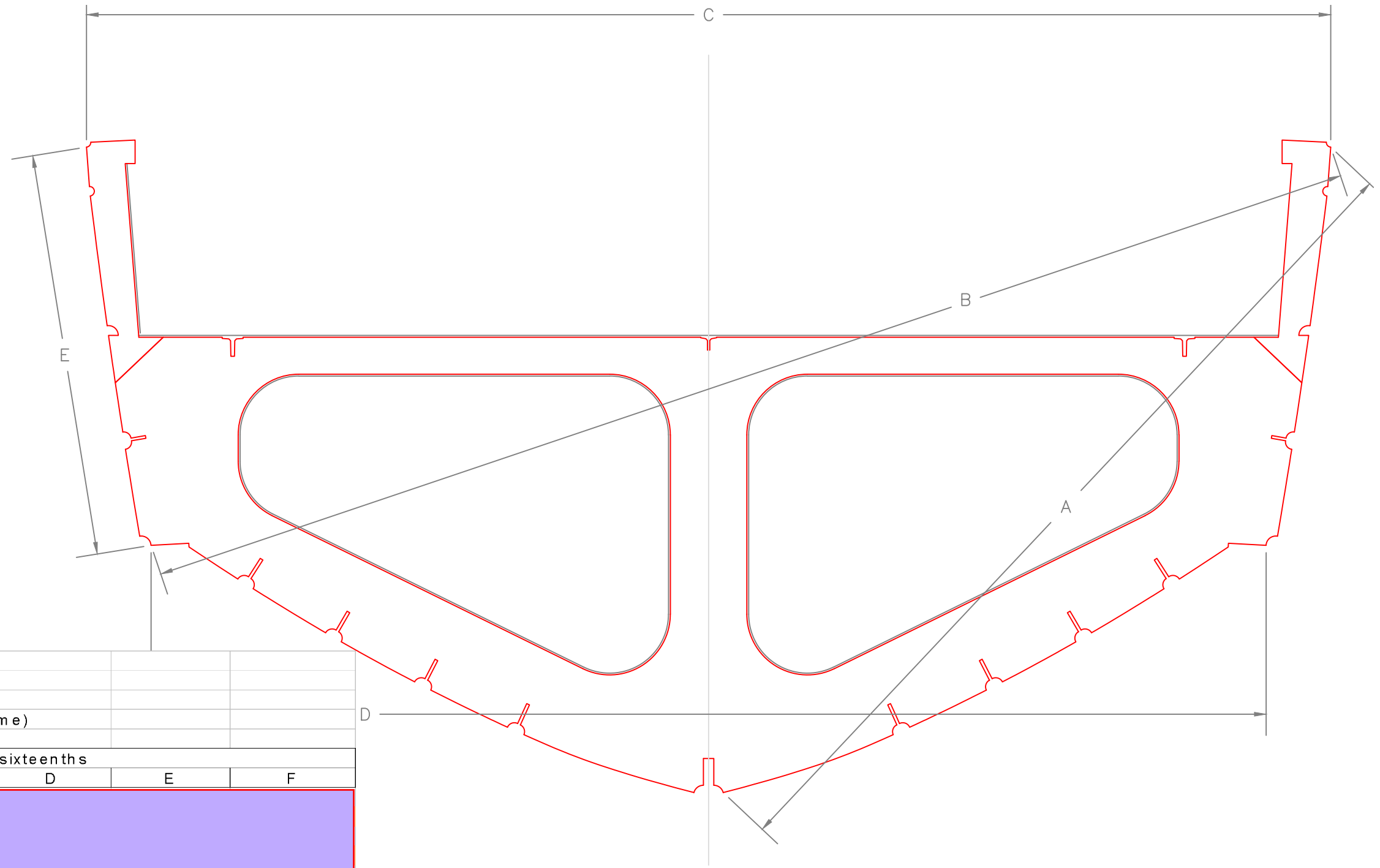
REV.	DESCRIPTION



320-SI; VENT TRUNKS		
SOUND MARINE		
SCALE 1"=1'	DES/DWN WAL	DATE 6/15/07
<b>Response Marine, Inc.</b> Newburyport, MA, www.responsemarine.com		SHEET DWG NO. 272-3-2

REV.	DESCRIPTION

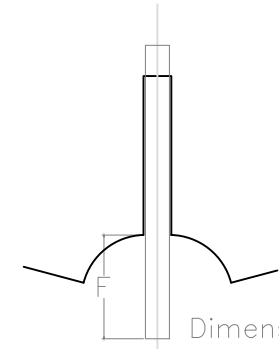




FRAME DIMENSIONS  
 #272, Sound-Huntington 32  
 Response Marine, I 6/14/07  
 (F is measured at FRONT side of Frame)

	Inches- sixteenths					
	A	B	C	D	E	F
F1						
F2						
F3						
F4						
F5						
F6						
F7						
F8						
F9						

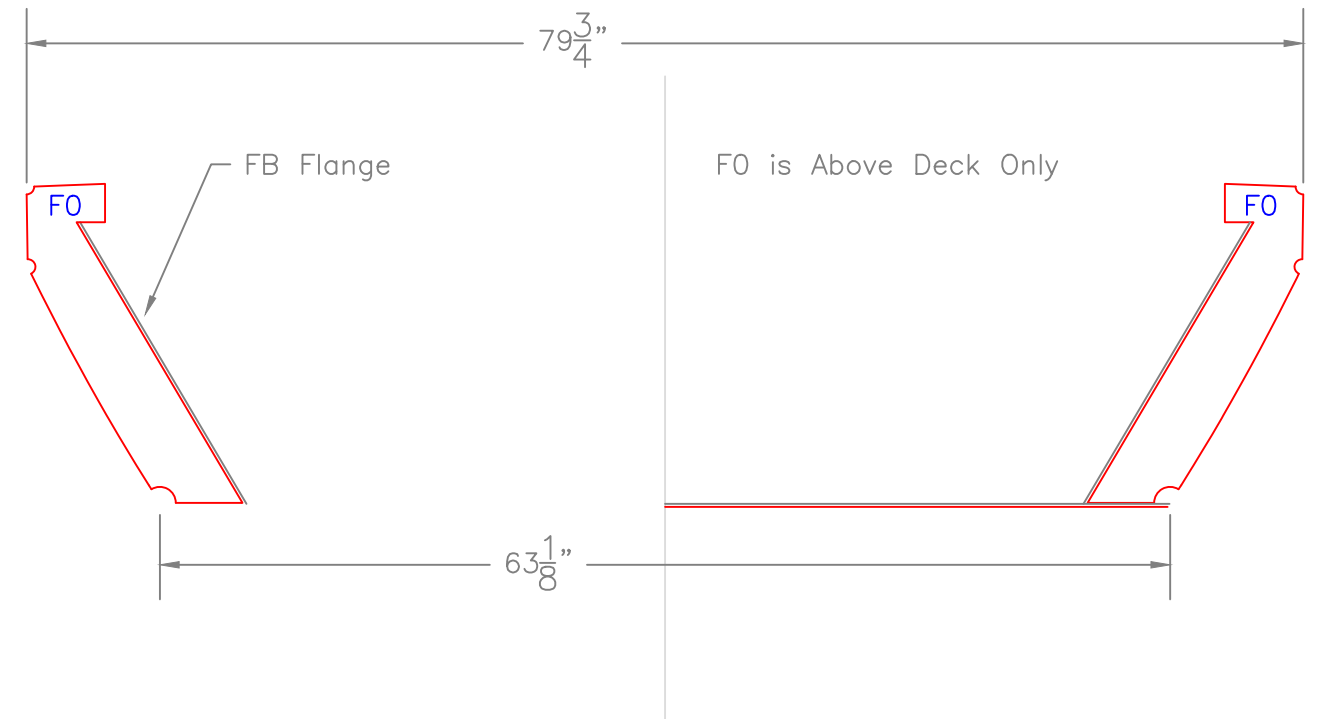
	Millimeters					
	A	B	C	D	E	F
F1						
F2						
F3						
F4						
F5						
F6						
F7						
F8						
F9						



Dimension "F" is Distance from top of Frame Limber to Bottom of Keel. Measured at Front Side of Frame

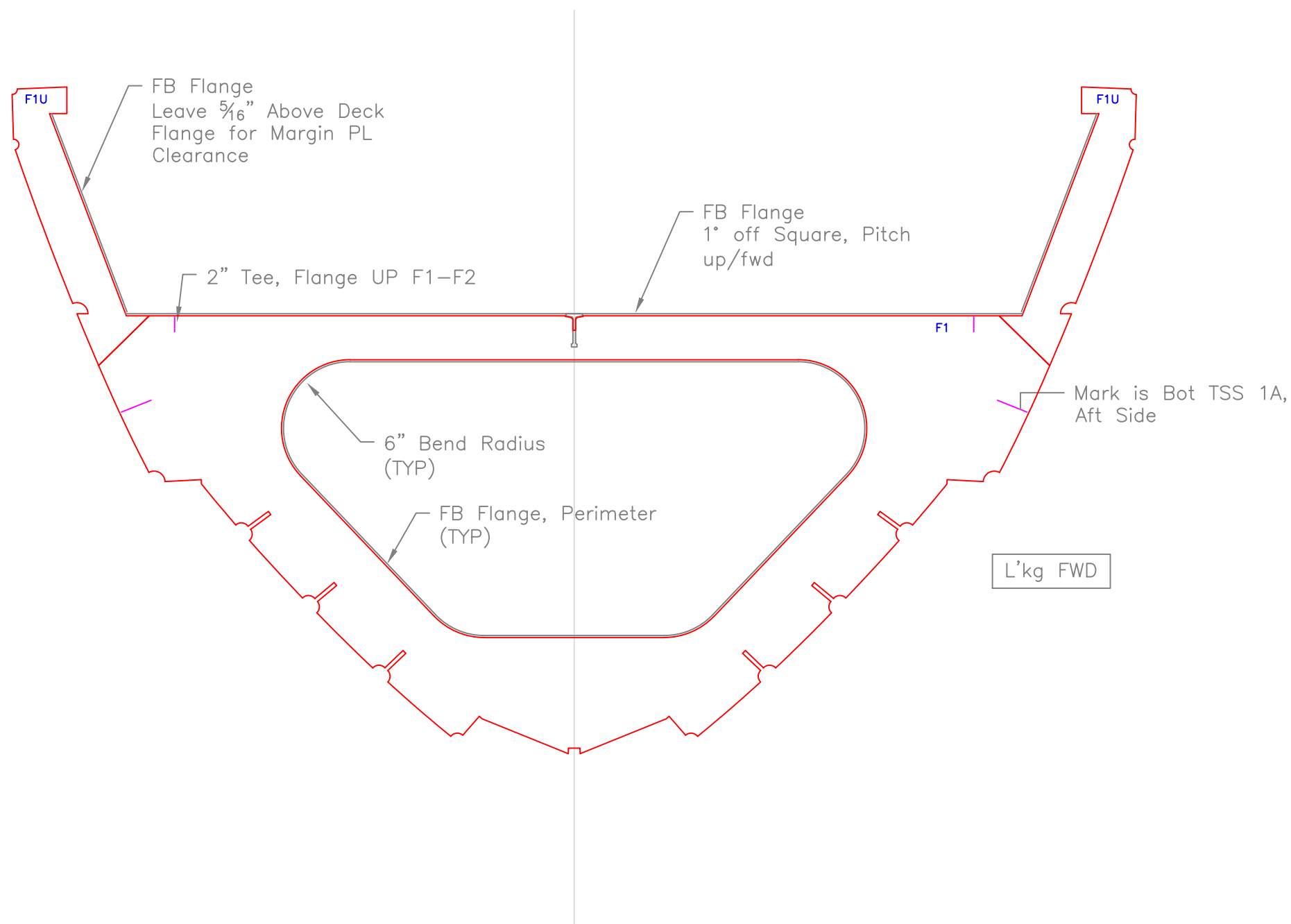
REV.	DESCRIPTION

FRAME DIMENSIONS		
320-SI- SOUND MARINE		
SCALE 1"=1'	DES/DWN WAL	DATE 6/14/07
Response Marine, Inc. Newburyport, MA, www.responsemarine.com		SHEET DWG NO. 272-FR



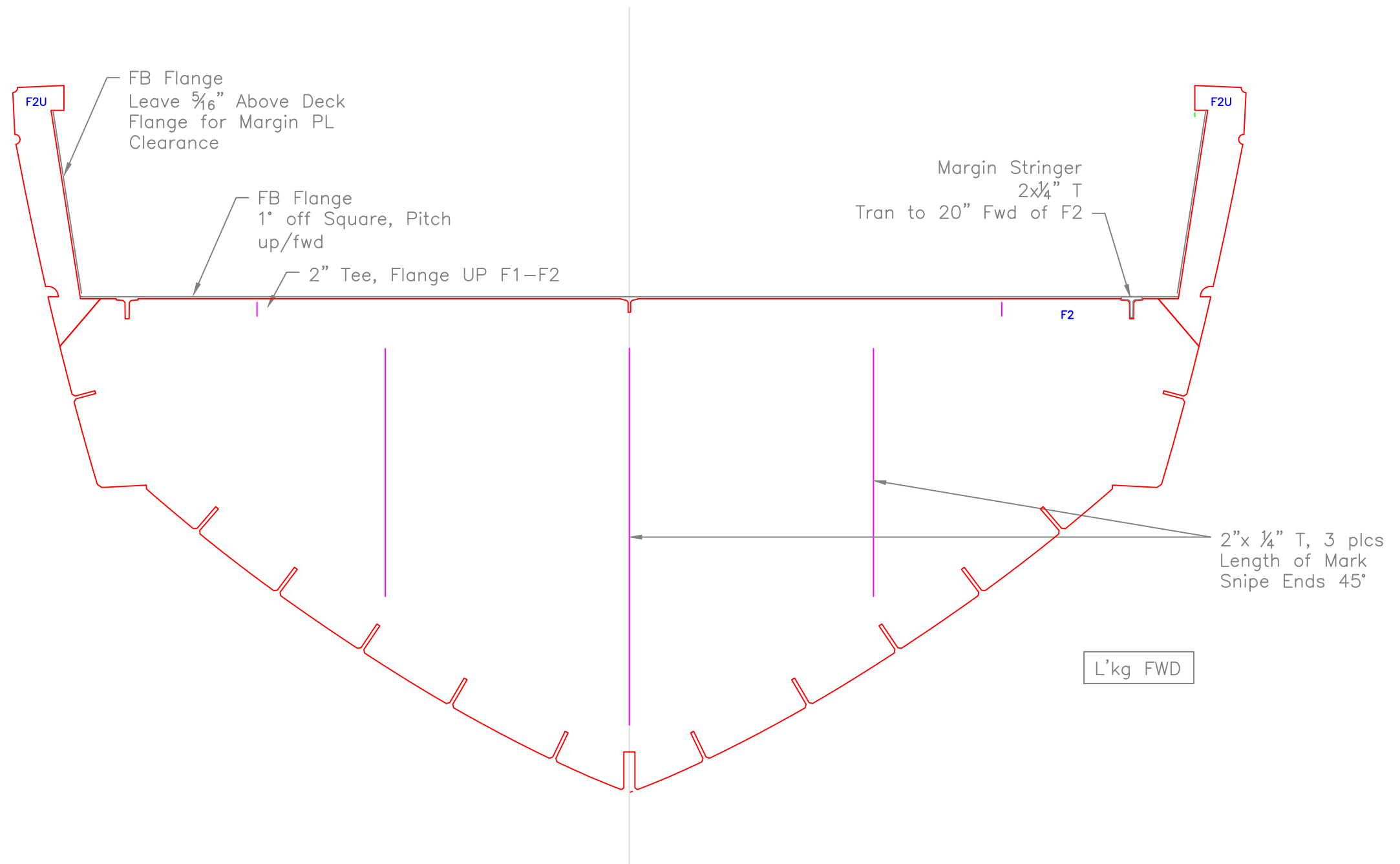
FRAME 0		
320-SI- SOUND MARINE		
SCALE 1"=1'	DES/DWN WAL	DATE 6/14/07
<b>Response Marine, Inc.</b> Newburyport, MA, www.responsemarine.com		SHEET 272-FO

REV.	DESCRIPTION



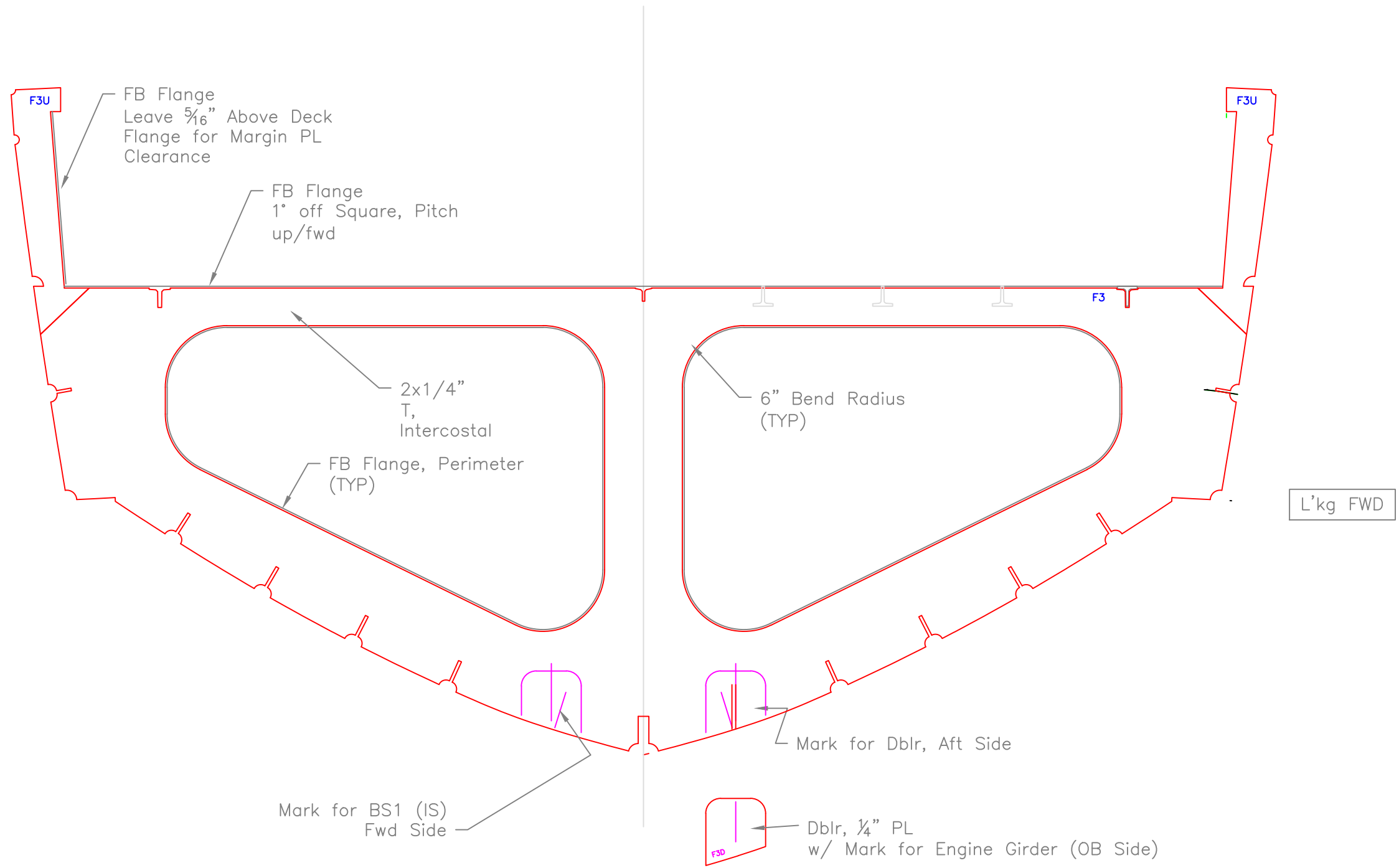
FRAME 1		
320-SI- SOUND MARINE		
SCALE 1"=1'	DES/DWN WAL	DATE 6/14/07
<b>Response Marine, Inc.</b> Newburyport, MA, www.responsemarine.com		SHEET 272-F1

REV.	DESCRIPTION



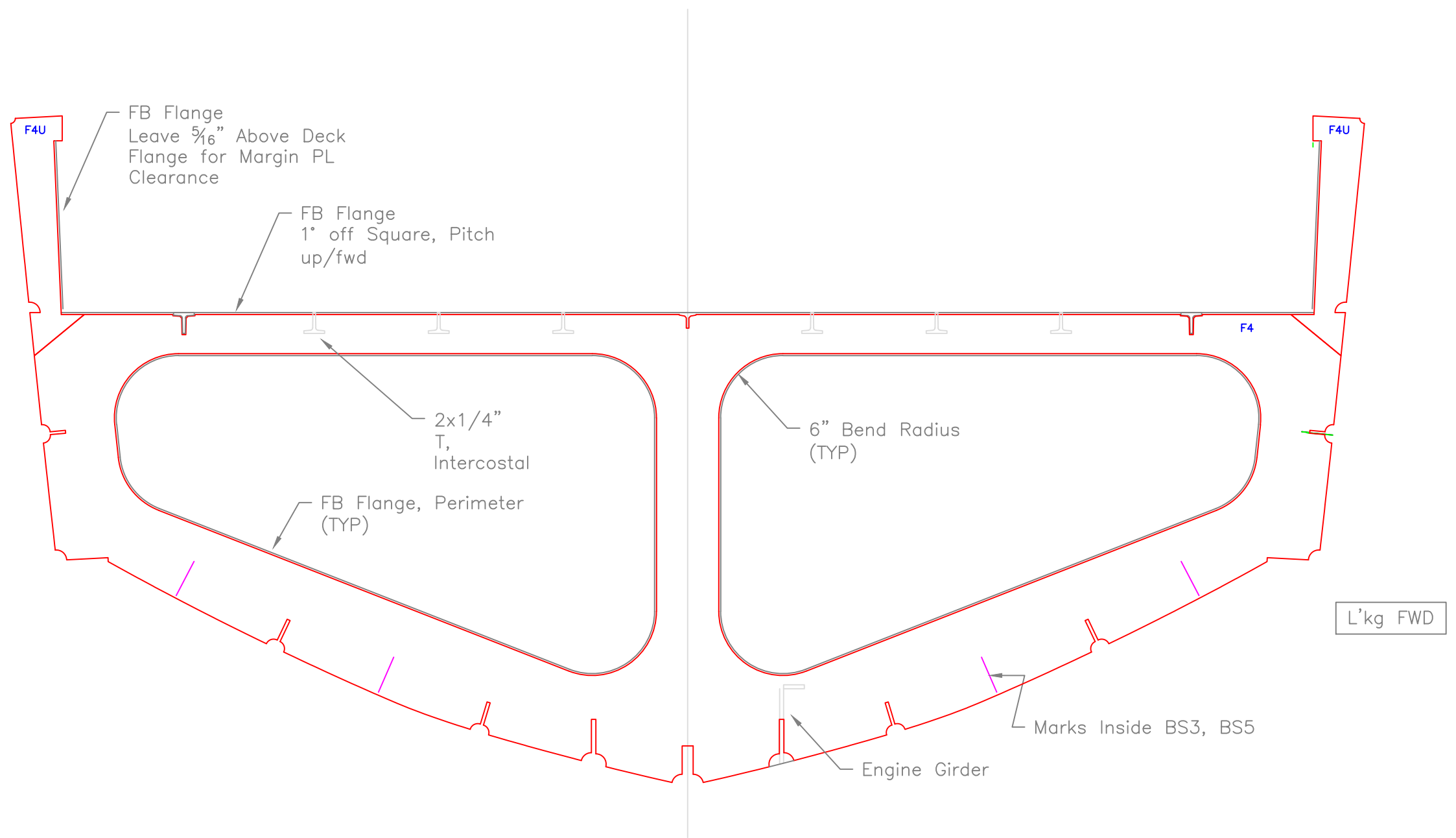
FRAME 2, WTBHD		
320-SI- SOUND MARINE		
SCALE 1"=1'	DES/DWN WAL	DATE 6/14/07
<b>Response Marine, Inc.</b> Newburyport, MA, www.responsemarine.com		SHEET 272-F2

REV.	DESCRIPTION



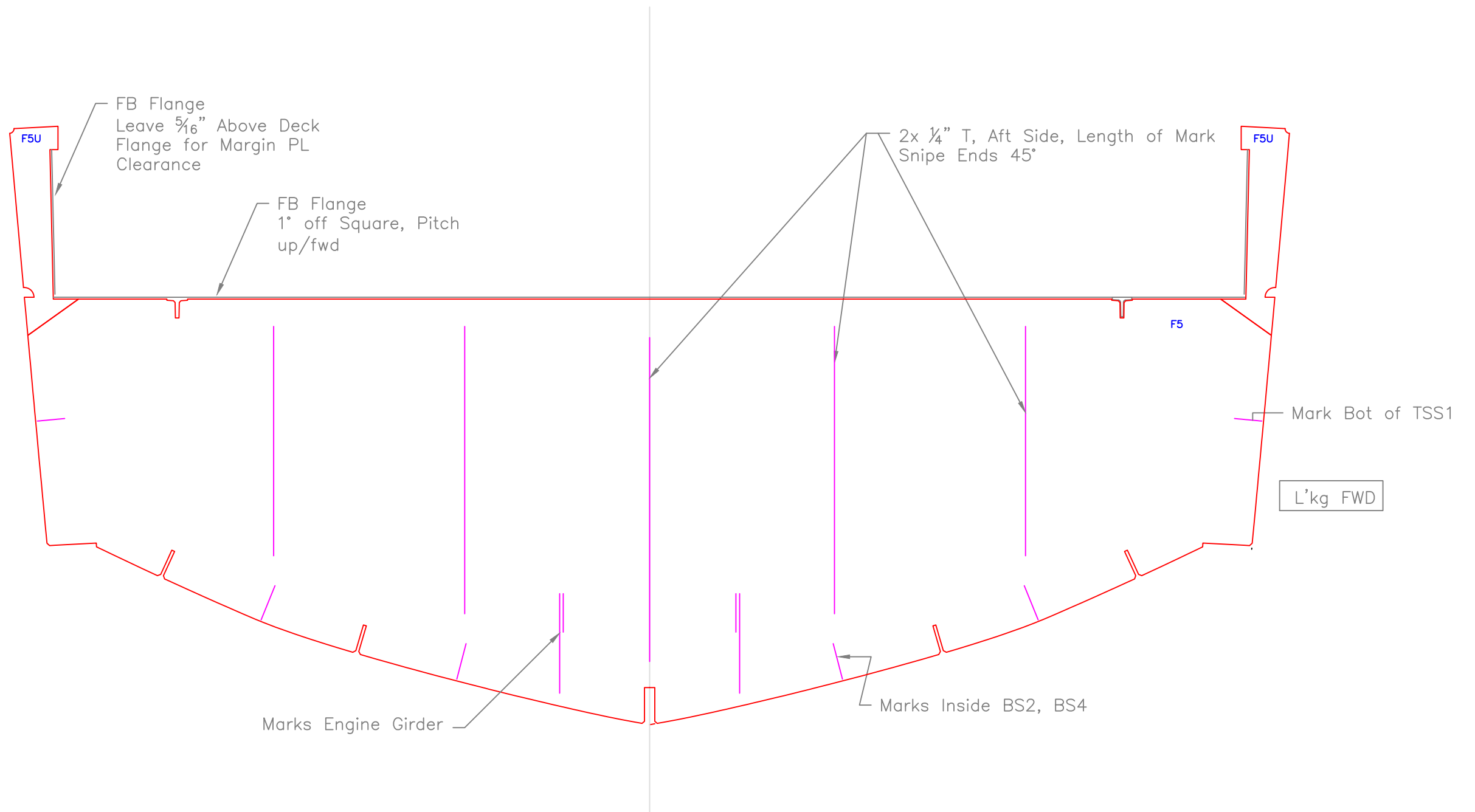
FRAME 3		
320-SI- SOUND MARINE		
SCALE 1"=1'	DES/DWN WAL	DATE 6/14/07
<b>Response Marine, Inc.</b> Newburyport, MA, www.responsemarine.com		SHEET 272-F3

REV.	DESCRIPTION



FRAME 4		
320-SI- SOUND MARINE		
SCALE 1"=1'	DES/DWN WAL	DATE 6/4/07
<b>Response Marine, Inc.</b> Newburyport, MA, www.responsemarine.com		SHEET 272-F4

REV.	DESCRIPTION

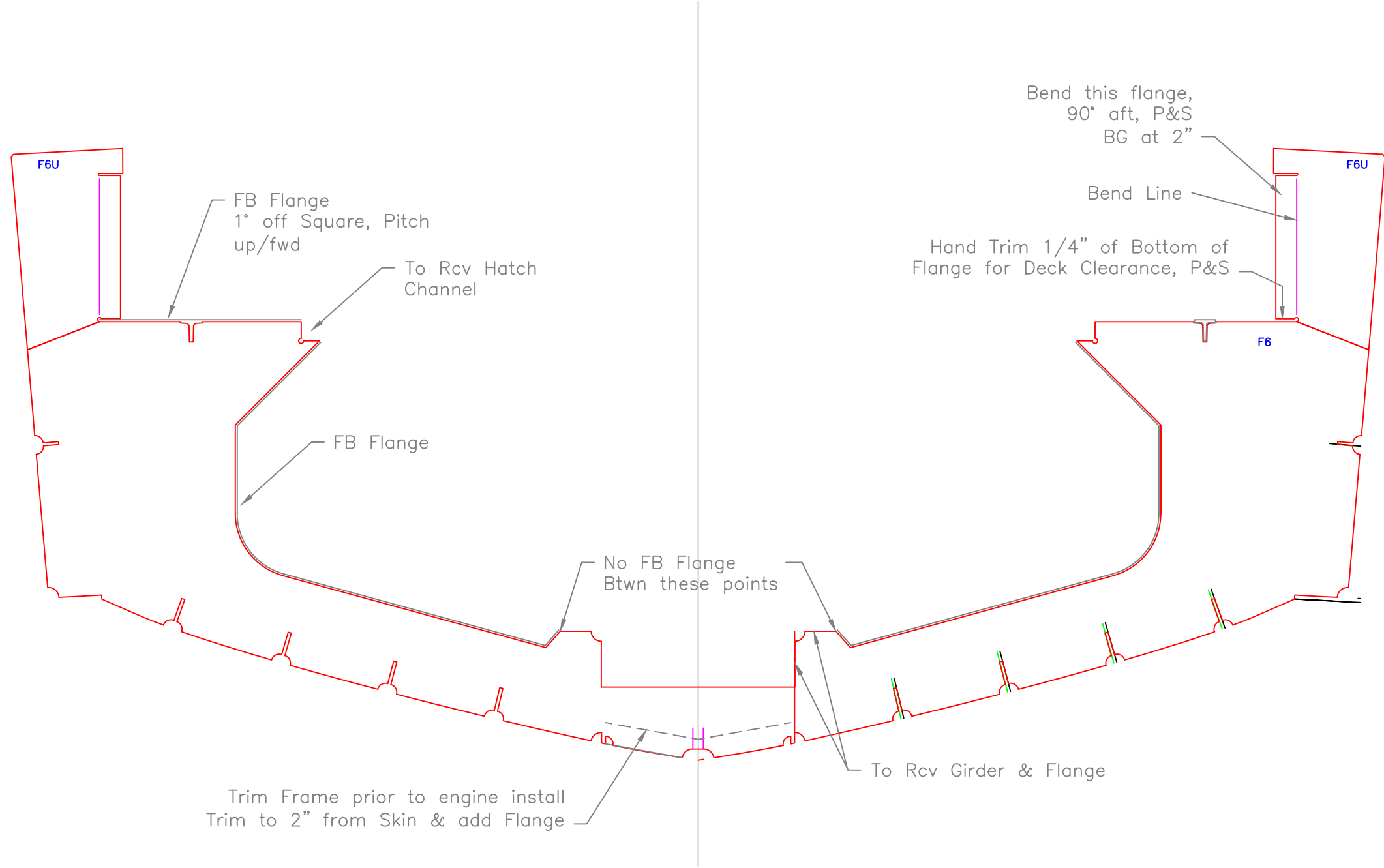


FRAME 5, WTBD		
320-SI- SOUND MARINE		
SCALE 1"=1'	DES/DWN WAL	DATE 6/14/07
<b>Response Marine, Inc.</b> Newburyport, MA, www.responsemarine.com		SHEET 272-F5

REV.	DESCRIPTION

of TSS1

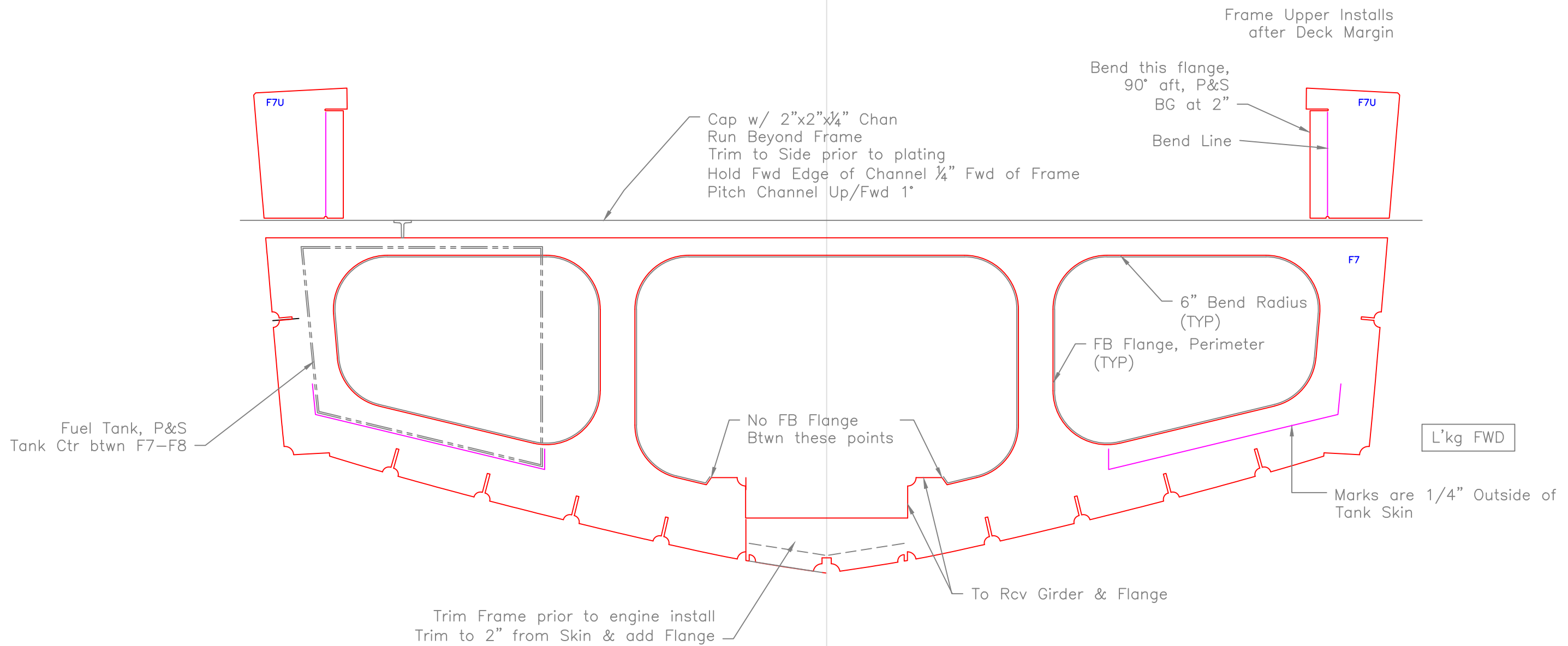
)



FRAME 6		
320-SI- SOUND MARINE		
SCALE 1"=1'	DES/DWN WAL	DATE 6/14/07
<b>Response Marine, Inc.</b> Newburyport, MA, www.responsemarine.com		SHEET 272-F6

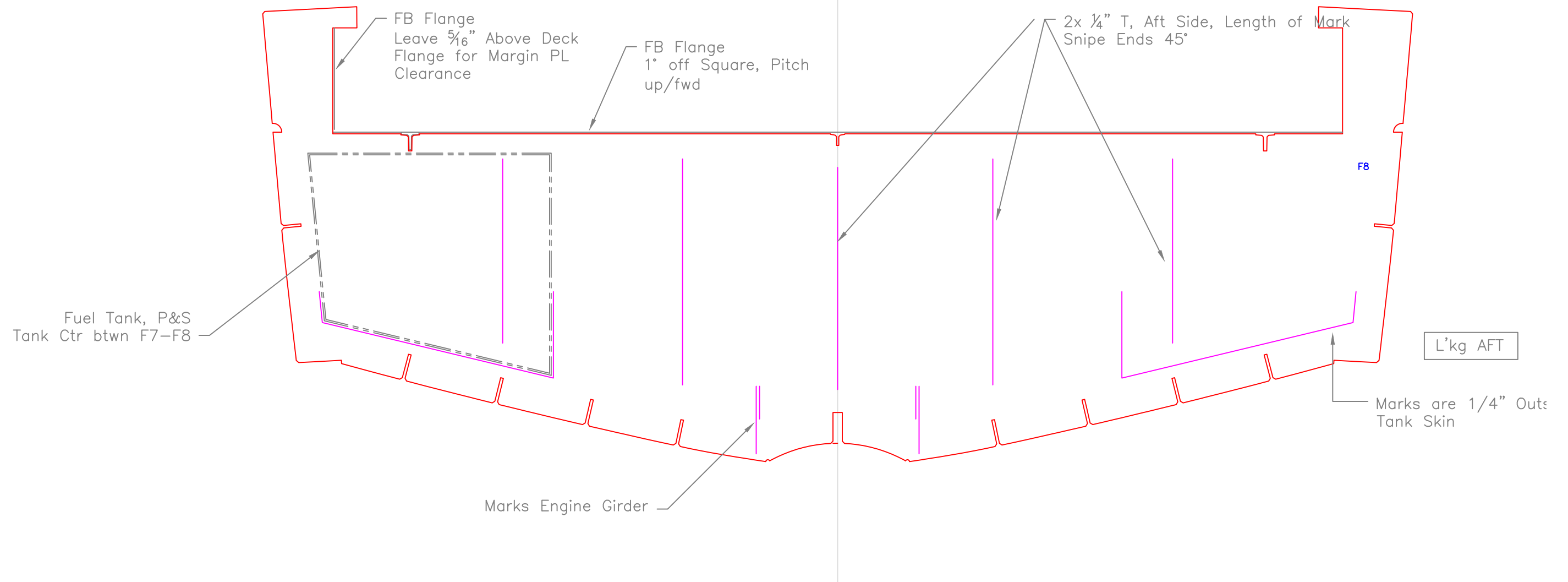
REV.	DESCRIPTION





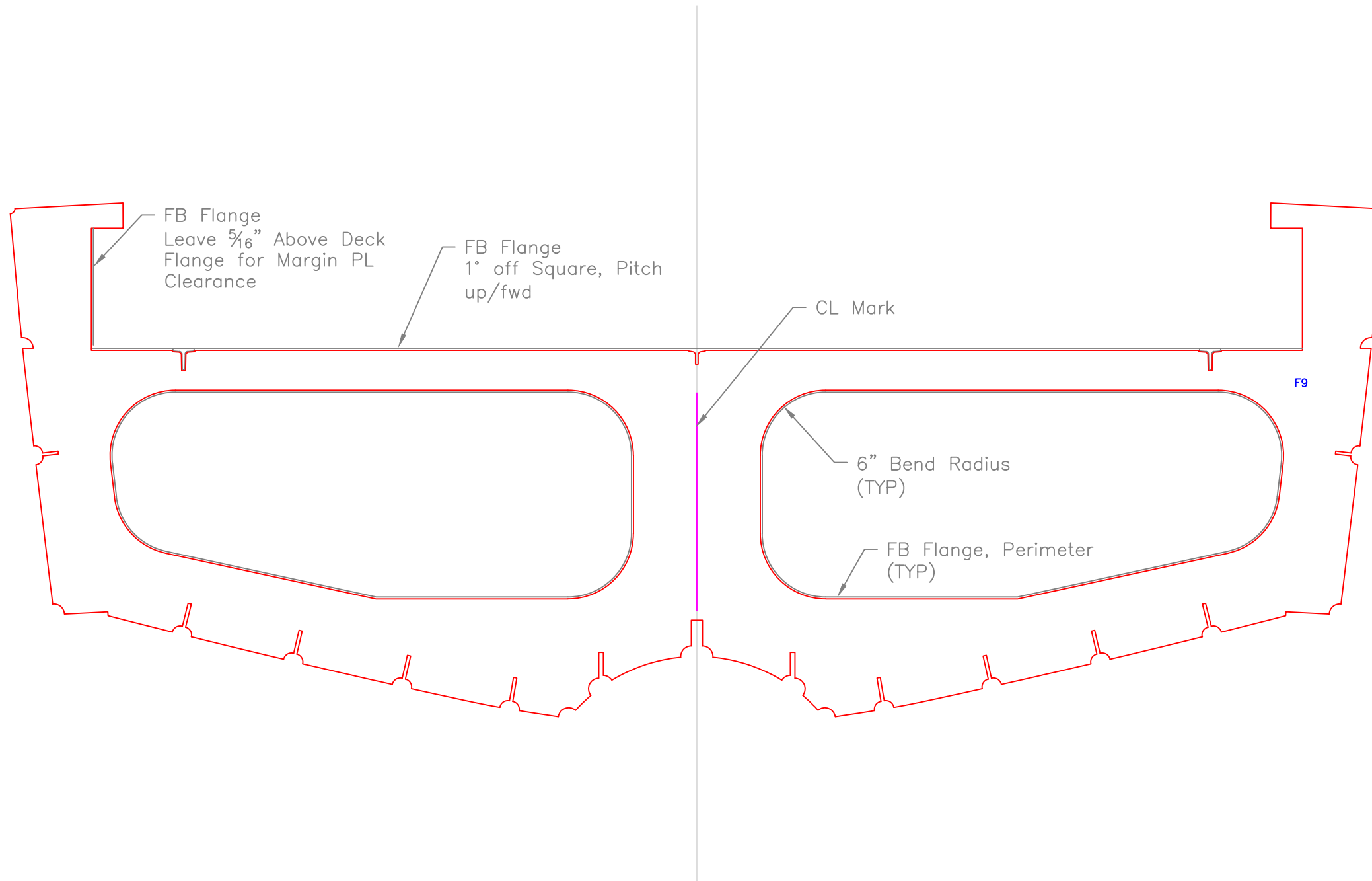
FRAME 7		
320-SI- SOUND MARINE		
SCALE 1"=1'	DES/DWN WAL	DATE 6/14/07
<b>Response Marine, Inc.</b> Newburyport, MA, www.responsemarine.com		SHEET DWG NO. 272-F7

REV.	DESCRIPTION



FRAME 8, WT BHD		
320-SI- SOUND MARINE		
SCALE 1"=1'	DES/DWN WAL	DATE 6/14/07
<b>Response Marine, Inc.</b> Newburyport, MA, www.responsemarine.com		SHEET 272-F8

REV.	DESCRIPTION



of

FRAME 9		
320-SI- SOUND MARINE		
SCALE 1"=1'	DES/DWN WAL	DATE 6/14/07
<b>Response Marine, Inc.</b> Newburyport, MA, <a href="http://www.responsemarine.com">www.responsemarine.com</a>		SHEET 272-F9

REV.	DESCRIPTION