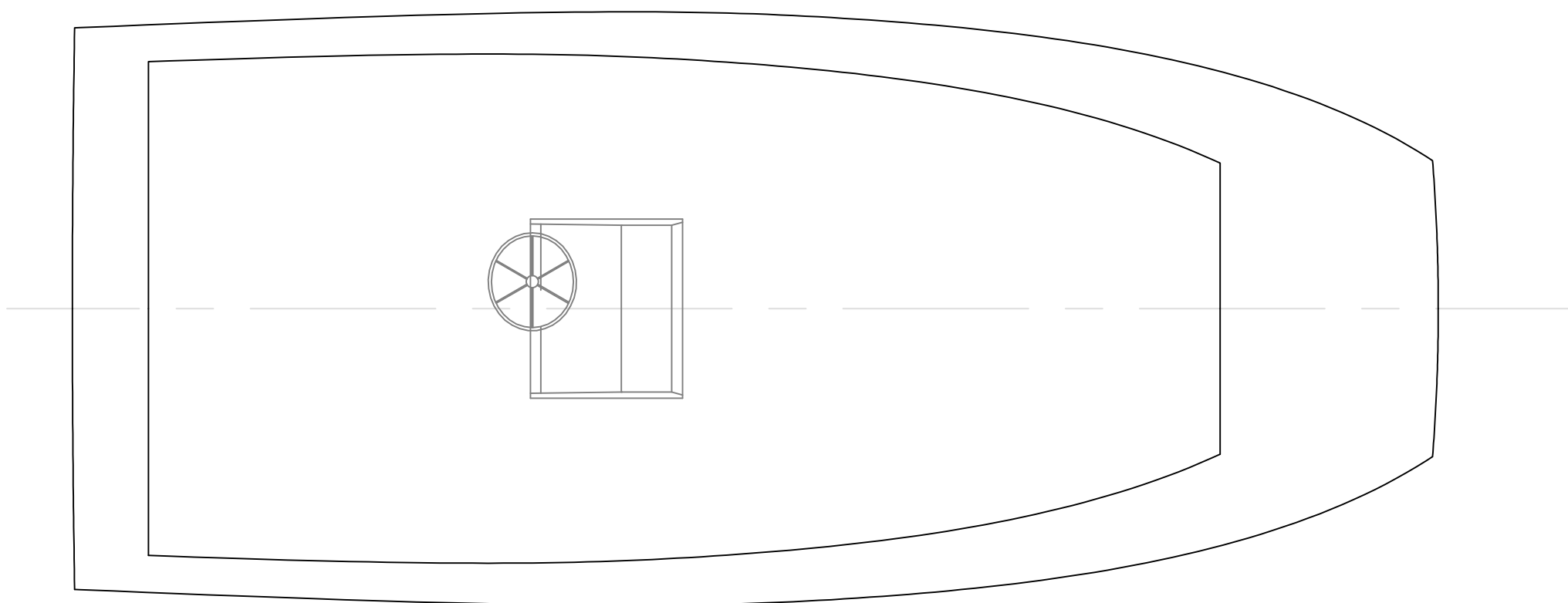
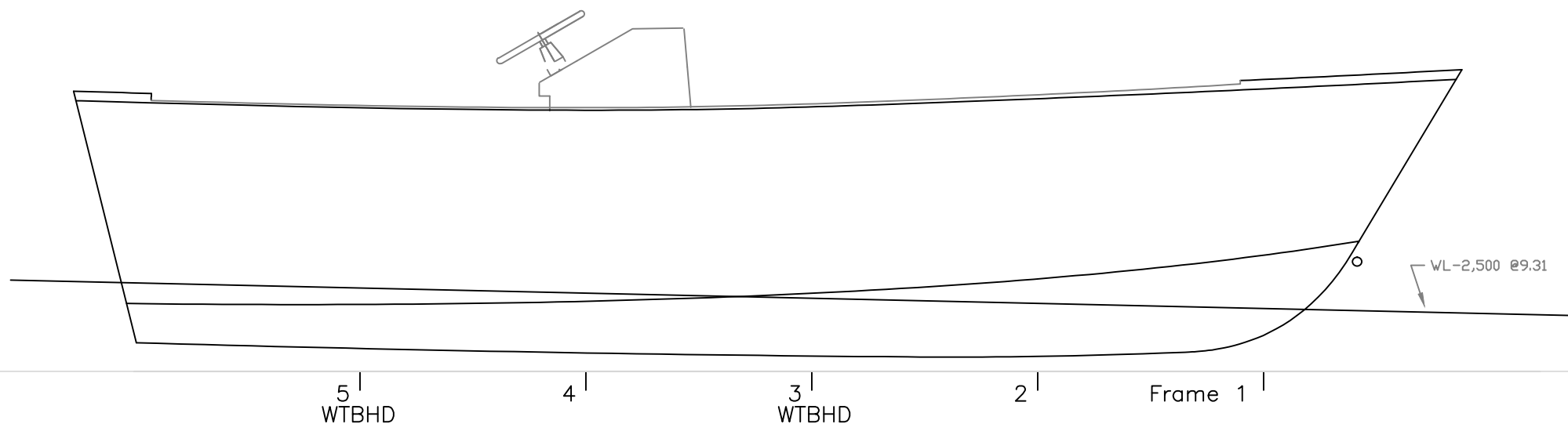


OUTBOARD VIEWS

18' Skiff		
For: Sound Marine		
SCALE 1/2" = 1'	DES/DWN WAL	DATE 3/15/11
Response Marine, Inc. <small>Newington, MA www.responsemarine.com</small>		SHEET DWG. NO. 260-P2a



OUTBOARD VIEWS

18' Skiff		
For: Sound Marine		
SCALE 1/2" = 1'	DES/DWN WAL	DATE 6/8/06
Response Marine, Inc.		SHEET
<small>Newington, MA www.responmarine.com</small>		DWG. NO. 260-1-03

***** Plazed Parts *****

Response Marine, Inc.

Boat: Sound Marine 18'- **CUTTING Files dated 11/13/14**

File: \Des\Sound Mar 18

Rev. Date: 11/13/14

Print Date: 7/12/16

7/12/16 Deleted the extra keel for separate boat

Same as March 2011 cut except did NOT include:

DEL Windshield & Roof Jigs

DEL Second Keel

Added 37 gal tank (gross)

Added Fwd Bench

Moved Side Deck Main Parts (SDA) to 5086

1/8" Parts- 5052 Stock

<u>Part #</u>	<u>Pieces</u>	<u>Description</u>	<u>Bend</u>
C-WS	0	Console Windshield & Wings	Y- on marks tight radius
C-1	1	Console Front & Sides	Y- on marks tight radius
C-2	1	Console Top	Y- on marks tight radius
C-3	1	Console Back	Y- on marks tight radius
WS-RJ	0	Windshield Roof Jig	
	3	Sub Total 1/8" 5052 parts	

3/16" Parts- 5052

<u>Part #</u>	<u>Pieces</u>	<u>Description</u>	<u>Bend</u>
BNCH-H	1	Forward Bench, Horizontal	maybe
BNCH-V	1	Forward Bench, Vertical	Y
BR	1	Bow Rub Vertical for Fabrication	
BS2-A	2	Bottom Stringer 2, Aft	Y, Flange per dwg "F-R"
F1	1	Frame 1	
F2	1	Frame 2	Y, Flange per dwg "F-R"
F2P	1	Frame 2, port	Y, Flange per dwg "F-R"
F2S	1	Frame 2, stbd	Y, Flange per dwg "F-R"
F3	1	Frame 3	Y, Flange per dwg "F-R"
F3-P	1	Frame 3, port	Y, Flange per dwg "F-R"
F3-S	1	Frame 3, stbd	Y, Flange per dwg "F-R"
F4	1	Frame 4	Y, Flange per dwg "F-R"
F4-P	1	Frame 4, port	Y, Flange per dwg "F-R"
F4-S	1	Frame 4, stbd	Y, Flange per dwg "F-R"
F5	1	Frame 5	Y, Flange per dwg "F-R"
F5-P	1	Frame 5, port	Y, Flange per dwg "F-R"
F5-S	1	Frame 5, stbd	Y, Flange per dwg "F-R"
FD	1	Foredeck	

SDA	0	Side Deck Fwd (MOVED TO 5086 FOR STOCK SIZE)	
WS-VA	1	Wndshield Visor Fwd	
WS-VB	1	Windshield Visor Aft	
WS-R	1	Windshield Roof	
37T-1	1	37 gal Tank, gross, BODY	Y
37T-2	1	37 gal Tank, gross, TRANS BAFFLE	Y, Flange per dwg "F-R"
37T-3	1	37 gal Tank, gross, LONGL BAFFLE	Y, Flange per dwg "F-R"
37T-4	2	37 gal Tank, gross, ENDS	
37T-5	1	37 gal Tank, gross, TOP	
	28	Sub Total 3/16" 5086 parts	

3/16" Parts- 5086 Marine

Bend

<u>Part #</u>	<u>Pieces</u>	<u>Description</u>
B	2	Bottom
Bow	1	Bow
BS	2	Bow Stiffeners
SM	2	Sole Margin
SDA	2	Side Deck Fwd (MOVED from 5052 FOR STOCK SIZE)
SDB	2	Side Deck Aft
TS	2	Topsides
	13	Sub Total 3/16" 5086 parts

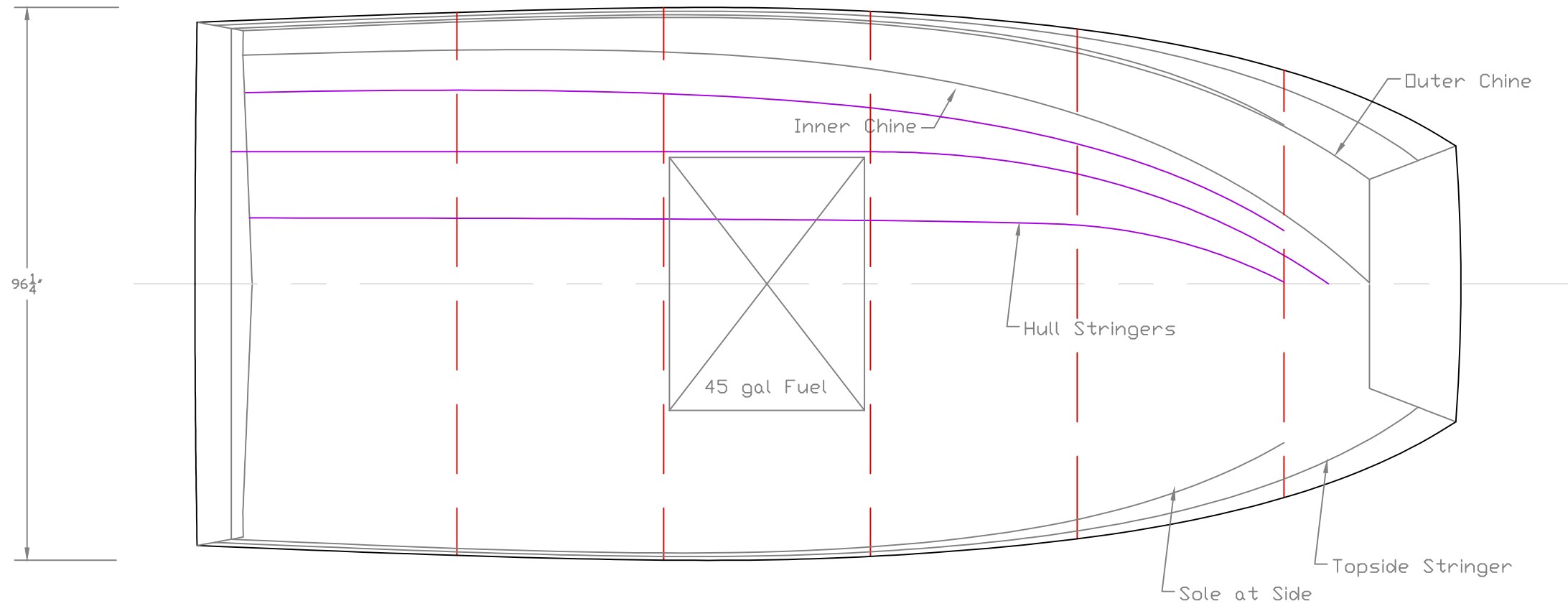
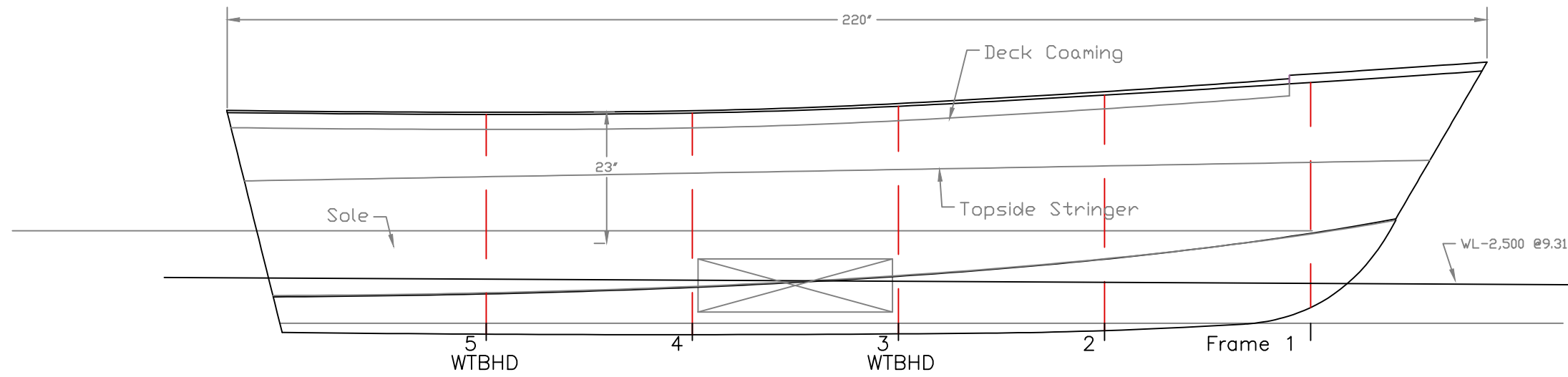
1/4" Parts- 5086 H116 Marine

BS1	2	Bottom Stringer 1
BS2	2	Bottom Stringer 2, fwd
BS3	2	Bottom Stringer 3
C-P	1	Chine Port
C-S	1	Chine Starboard
FDC	1	Foredeck Coaming
SDC	2	Side Deck Coaming
T	1	Transom
TSS	2	Topsides Stringer
	14	Sub Total 1/4" Parts

3/8" Parts 5086 H116 Marine

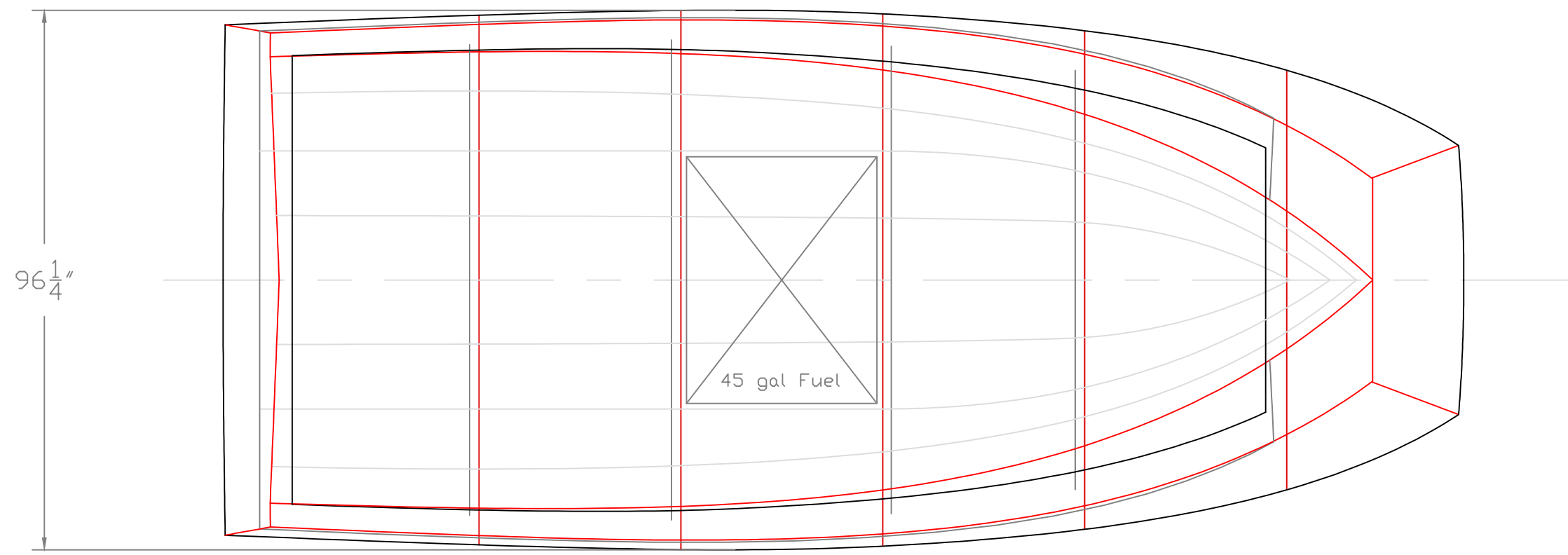
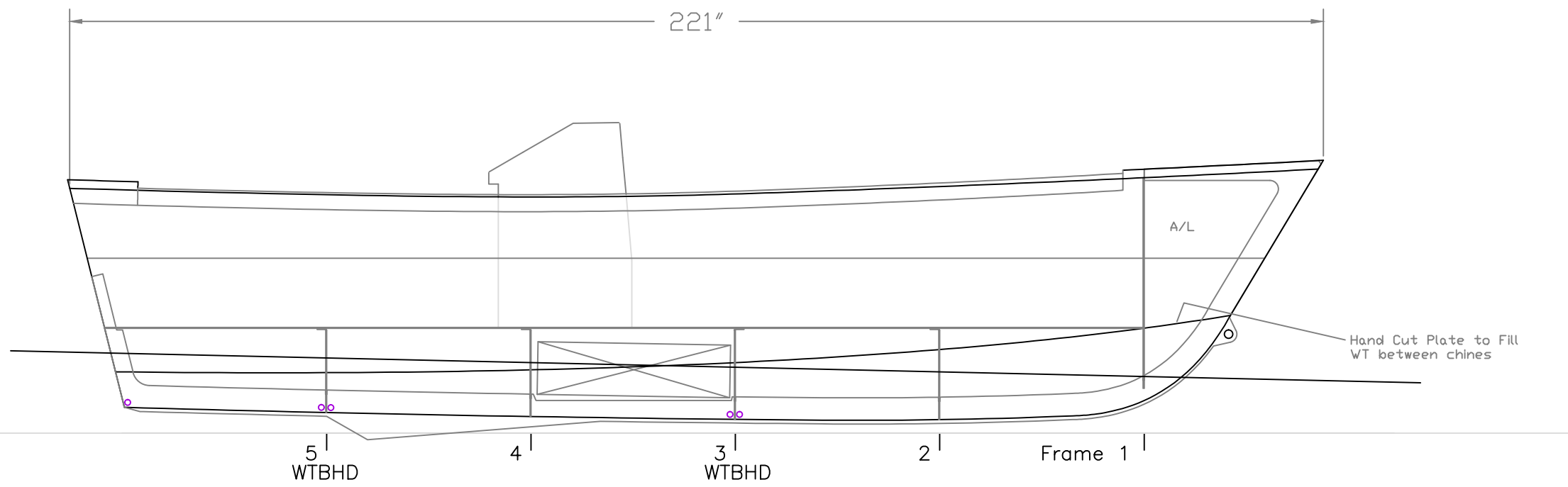
<u>Part #</u>	<u>Pieces</u>	<u>Description</u>
KA	1	Keel, Fwd
KB	1	Keel, Mid
KC	1	Keel, Aft
	3	Total 3/8" parts

61 Total Parts



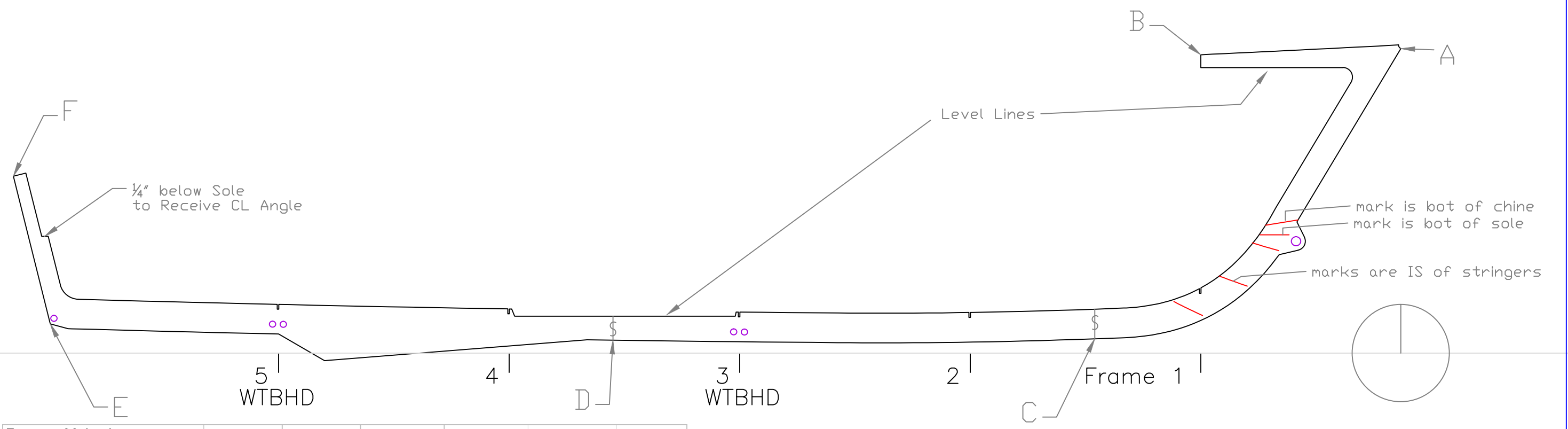
INBOARD VIEWS

18' Skiff		
For: Sound Marine		
SCALE 1/2" = 1'	DES/DWN WAL	DATE 5/30/06
Response Marine, Inc.		SHEET
Newburyport, MA www.responsemarine.com		DWG NO. 260-P3

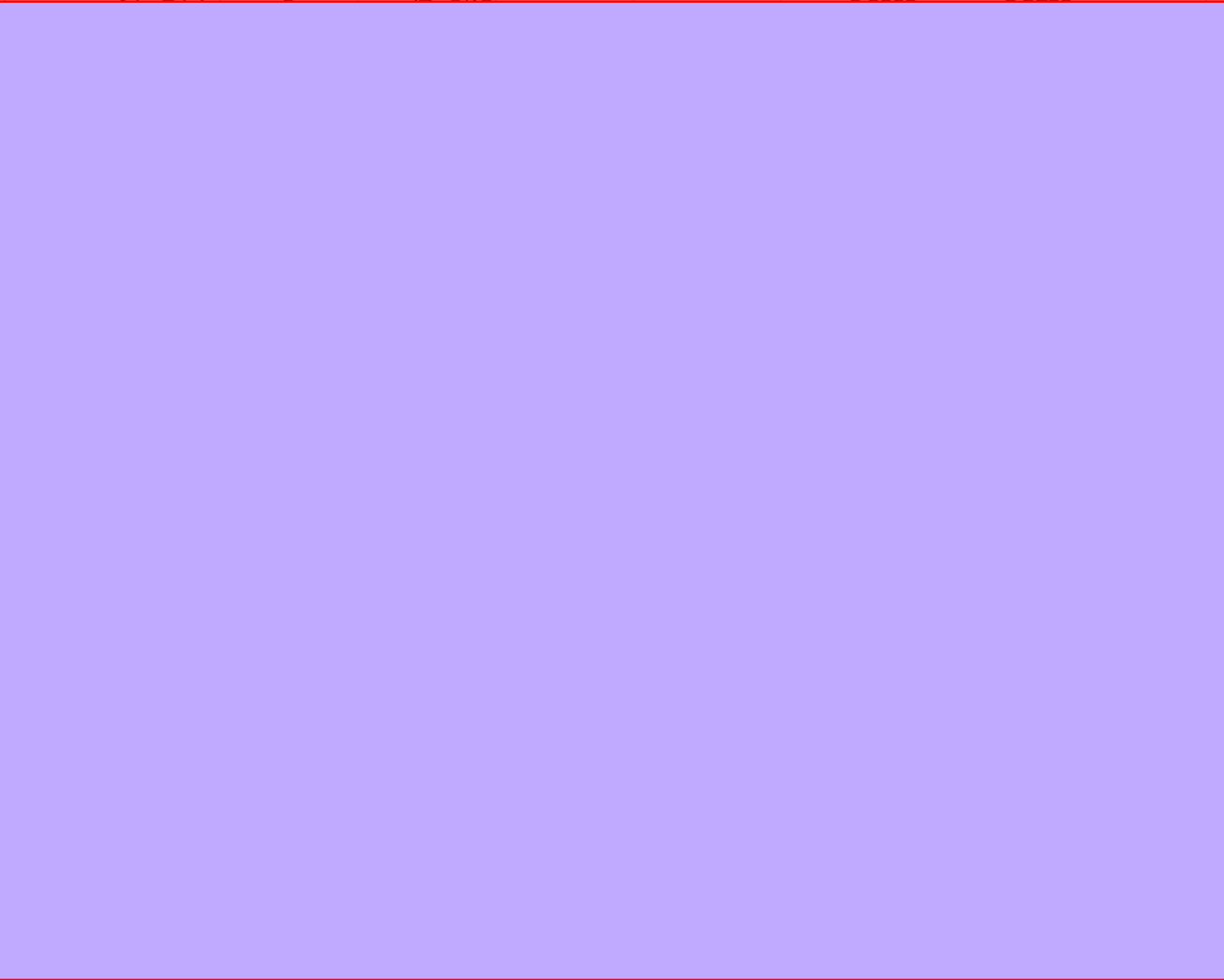


INBOARD VIEWS

18' Skiff		
For: Sound Marine		
SCALE 1/2" = 1'	DES/DWN WAL	DATE 6/8/06
Response Marine, Inc.		SHEET
Newington, MA www.responsemarine.com		DWG. NO. 260-1-02



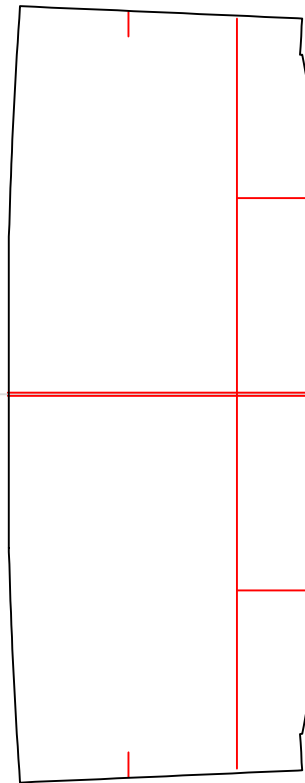
Response Marine, Inc.					
Sound Marine 18	6/8/06				
Keel Points					
	Inches- sixteenths		Feet		
	Horizontal	Vertical	Horizontal	Vertical	



Frame Spacing; 36" ctc

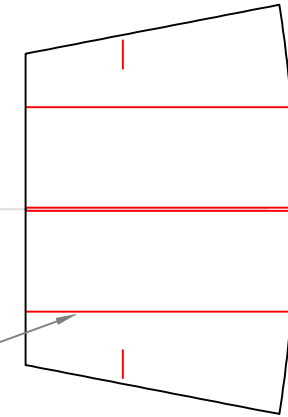
KEEL LAYOUT			
18' Skiff			
For: Sound Marine			
SCALE 3/4" = 1'	DES/DWN WAL	DATE 6/8/06	
Response Marine, Inc.			SHEET
Newington, MA www.responmarine.com			DWG. NO. 260-2-01

TRANSOM



3/4" Coupling

BOW



Bow Stiffener (BS)
Mark is IB

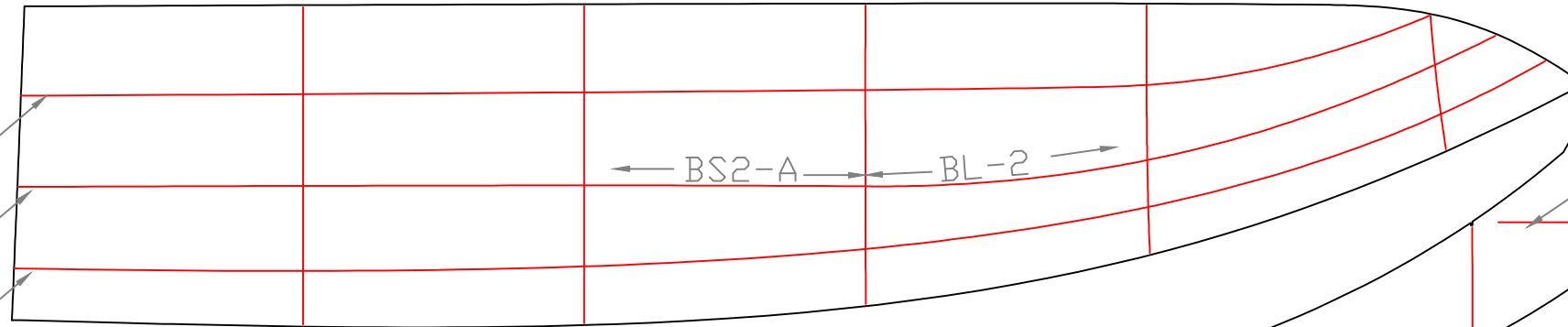
5
WTBHD

4

3
WTBHD

2

Frame 1

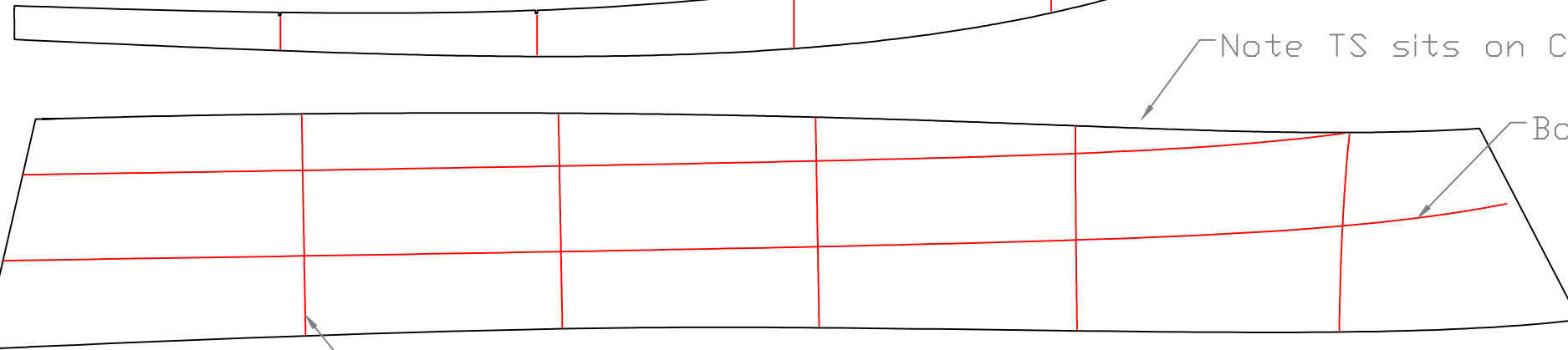


BS-1
-Mark is IB

BS-2, BS2-A
-Mark is IB

BS-3
-Mark is IB

Note TS sits on Chine by 3/32"

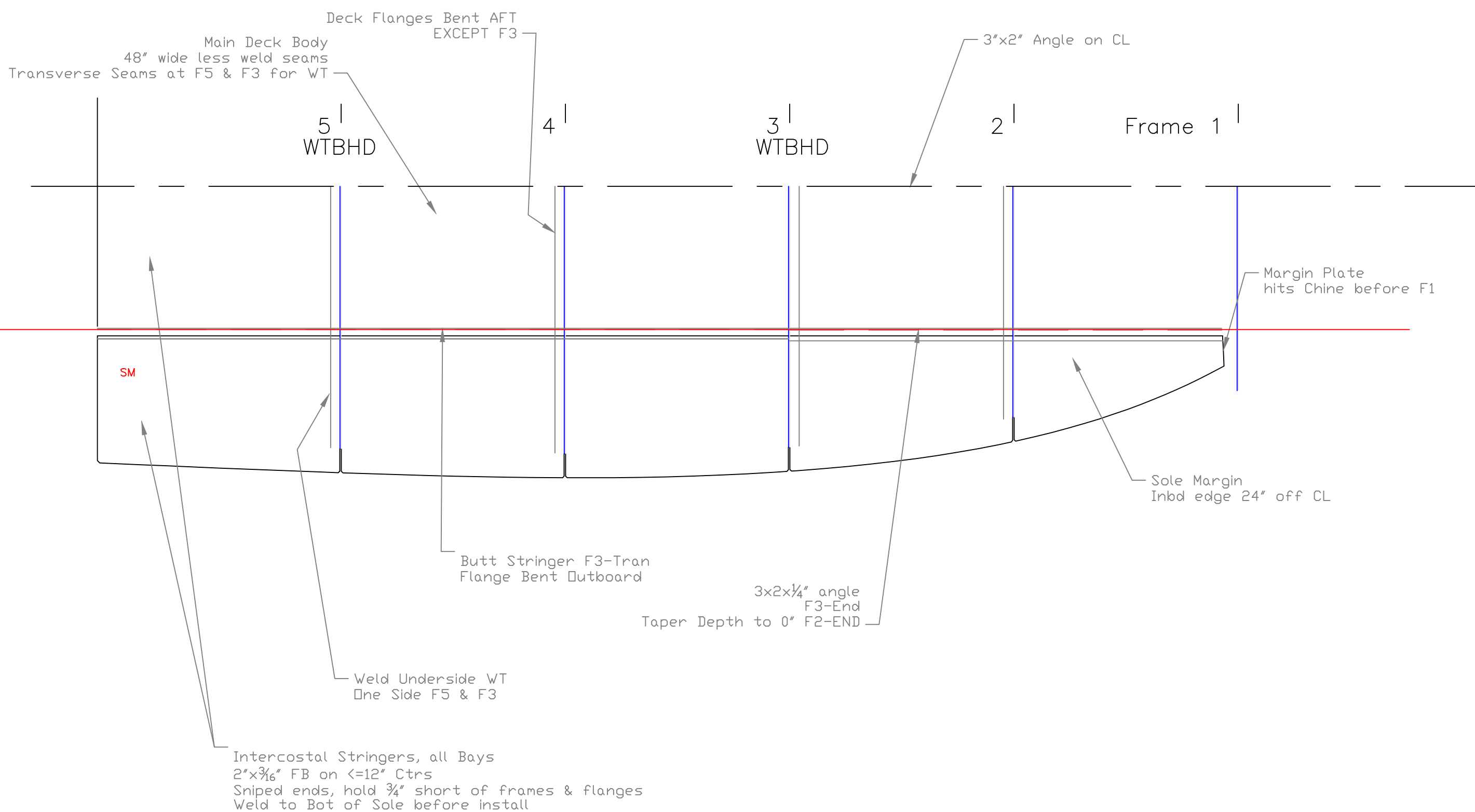


Bot of TSL

FRONT side of Frames

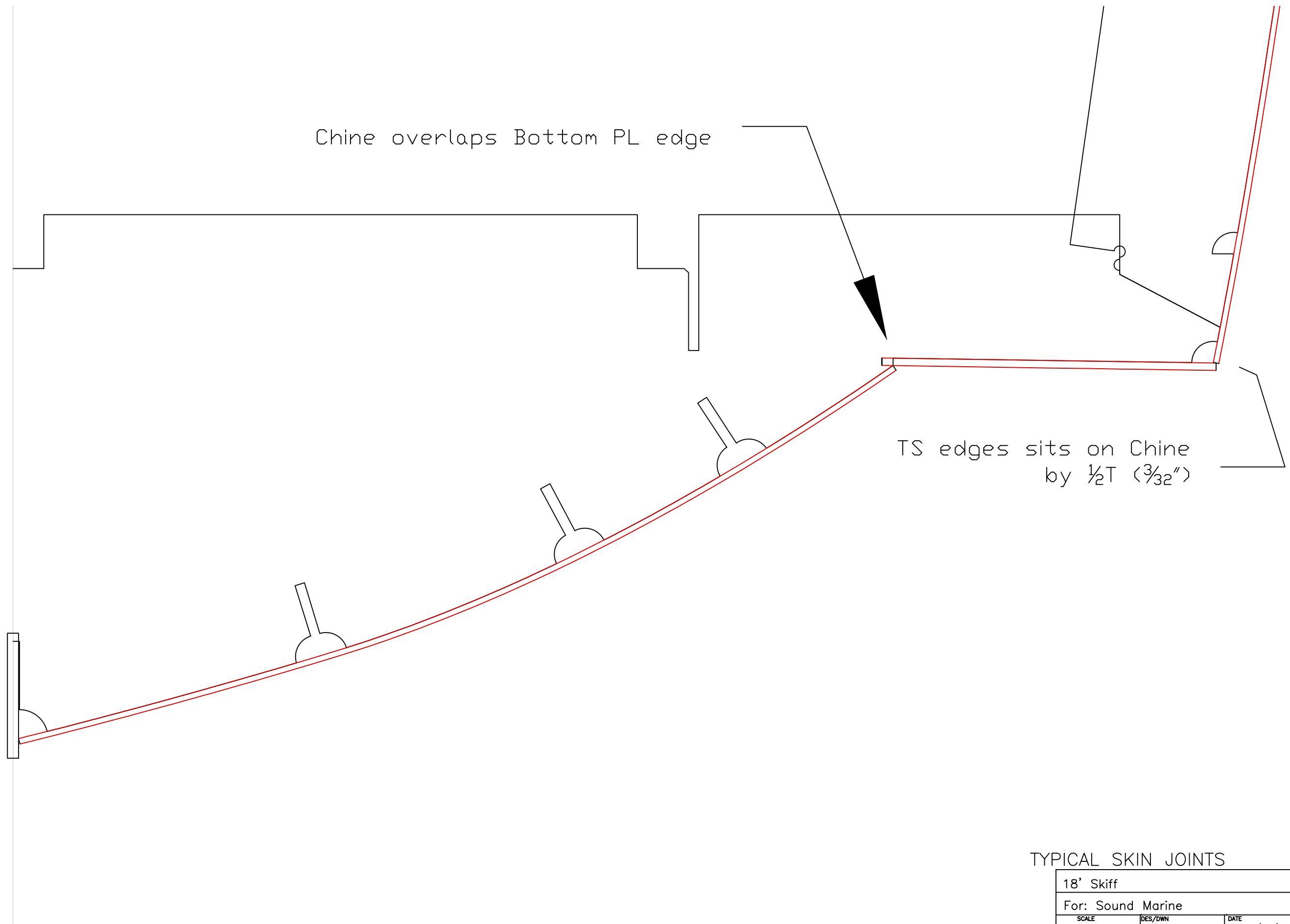
SKIN LAYOUT

18' Skiff		
For: Sound Marine		
SCALE NONE	DES/DWN WAL	DATE 6/8/06
Response Marine, Inc.		SHEET
Newington, MA www.responsemarine.com		DWG. NO. 260-2-02



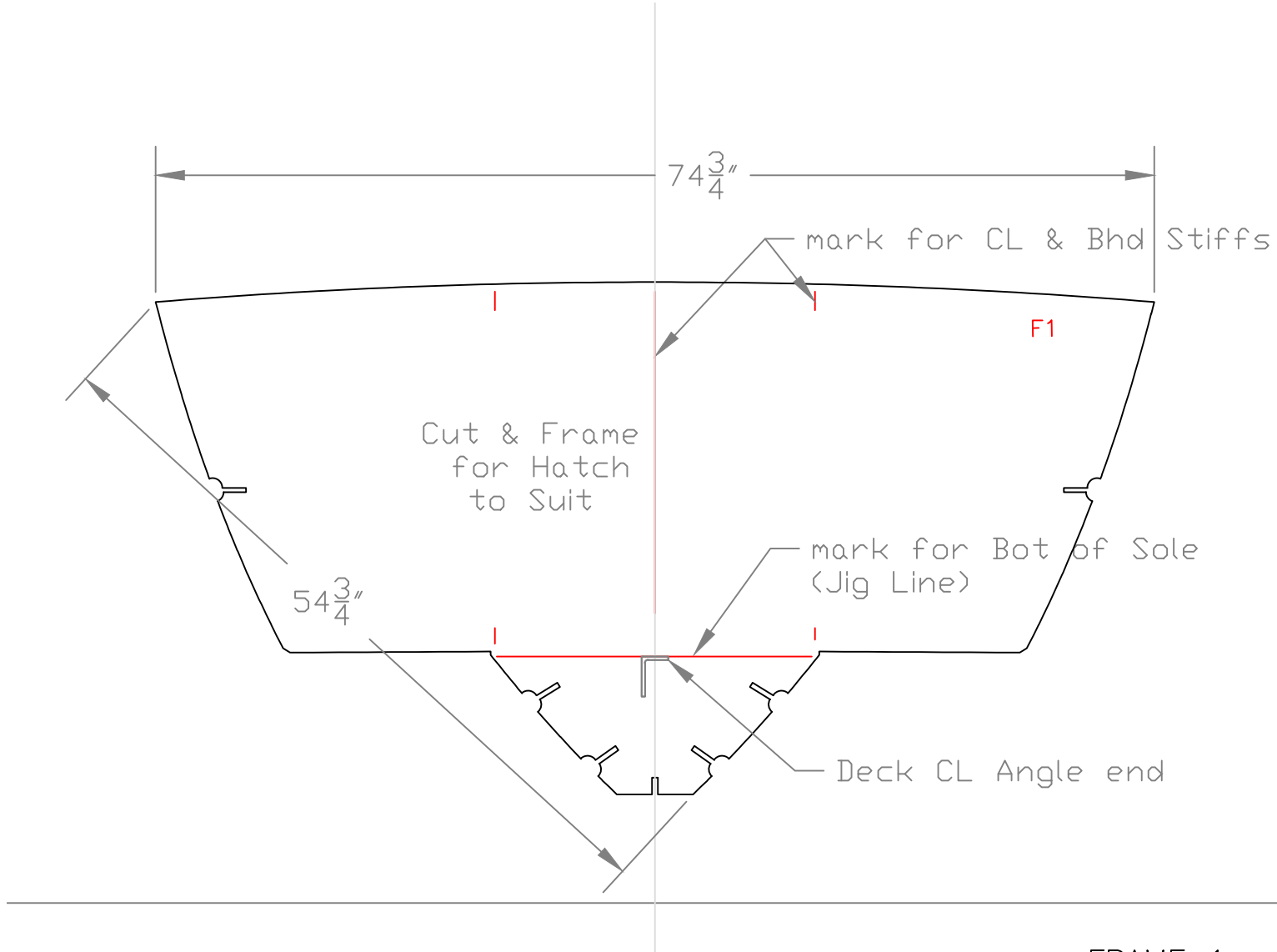
COCKPIT SOLE LAYOUT

18' Skiff		
For: Sound Marine		
SCALE 3/4" = 1'	DES/DWN WAL	DATE 6/8/06
Response Marine, Inc.		SHEET
Newington, MA www.responsemarine.com		DWG. NO. 260-2-03



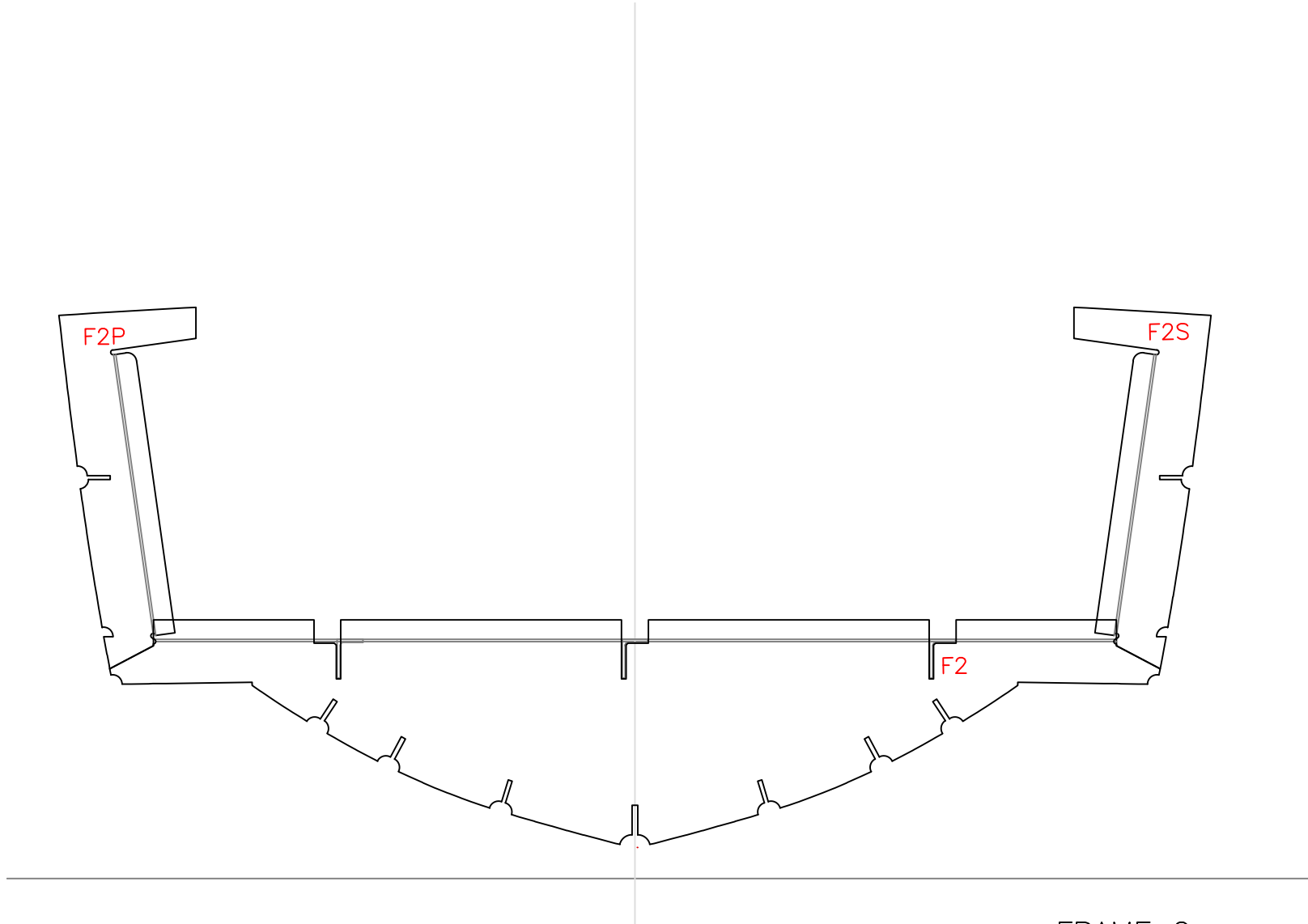
TYPICAL SKIN JOINTS

18' Skiff		
For: Sound Marine		
SCALE NONE	DES/DWN WAL	DATE 6/8/06
Response Marine, Inc.		SHEET
<small>Newington, MA www.responmarine.com</small>		DWG. NO. 260-C-1



FRAME 1

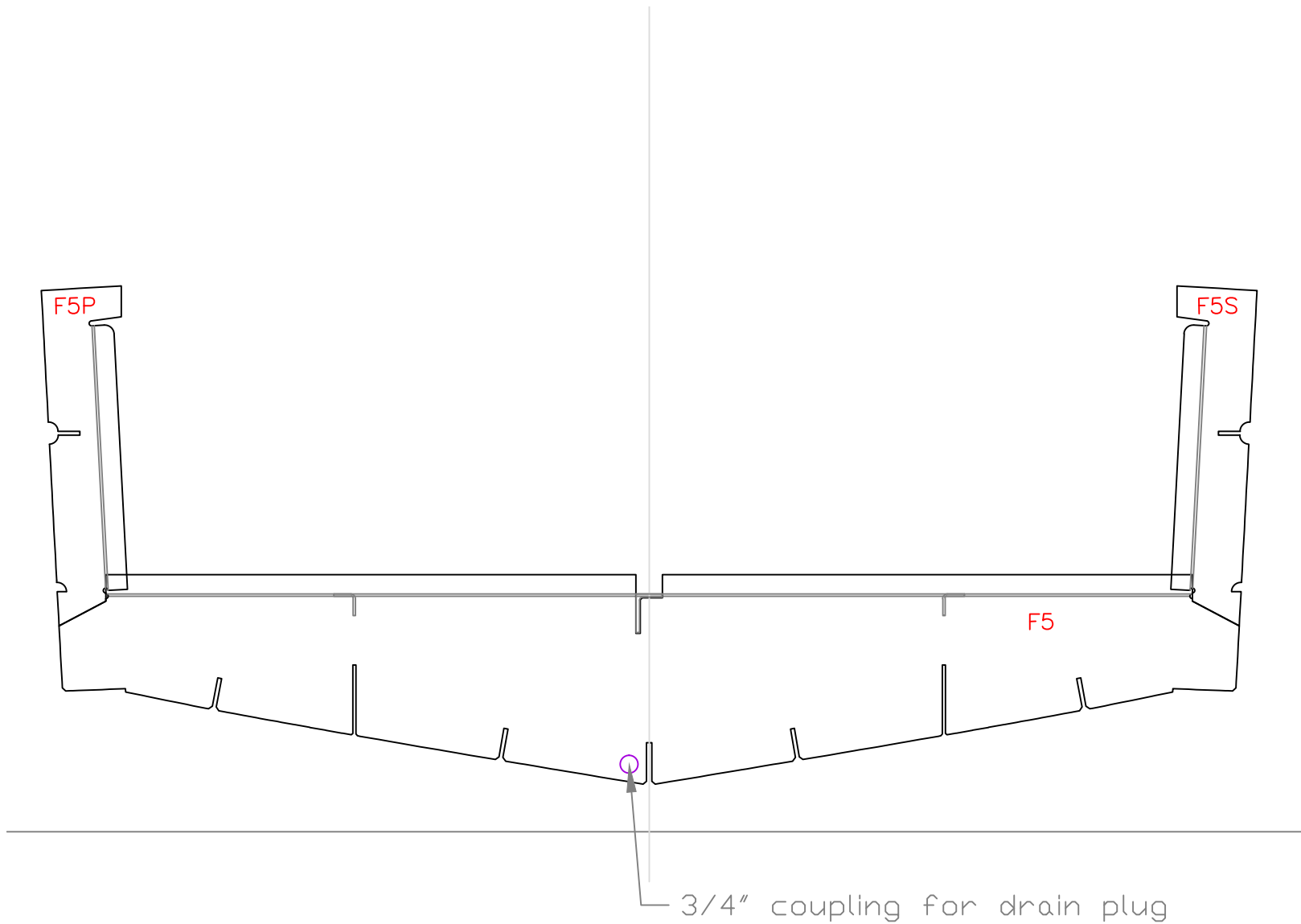
18' Skiff		
For: Sound Marine		
SCALE 1" = 1'	DES/DWN WAL	DATE 6/8/06
Response Marine, Inc. <small>Newburyport, MA, www.responsemarine.com</small>		SHEET DWG. NO. 260-F1



FRAME 2

18' Skiff		
For: Sound Marine		
SCALE 1" = 1'	DES/DWN WAL	DATE 6/8/06
Response Marine, Inc.		SHEET
Newburyport, MA, www.responsemarine.com		DWG NO. 260-F2-R

REVISIONS
9/28/06- Margin Angle Notches



FRAME 5

18' Skiff		
For: Sound Marine		
SCALE 1" = 1'	DES/DWN WAL	DATE 6/8/06
Response Marine, Inc.		SHEET
Newburyport, MA, www.responsemarine.com		DWG. NO. 260-F5