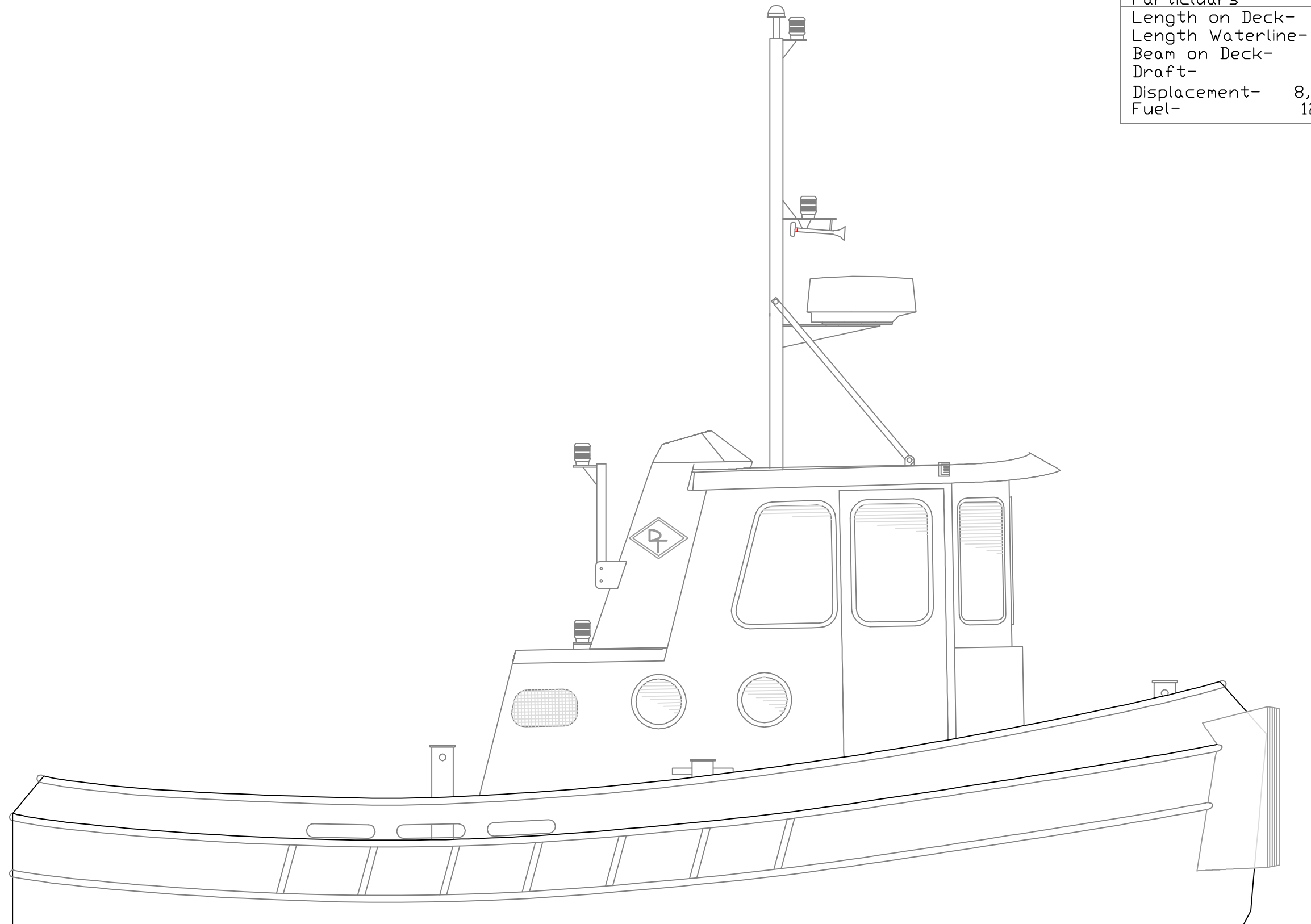


Particulars-	
Length on Deck-	23' 0"
Length Waterline-	22' 7"
Beam on Deck-	8' 10"
Draft-	3' 5"
Displacement-	8,000#, w/ 1/2 Fuel, 750# Load
Fuel-	124 Gal.



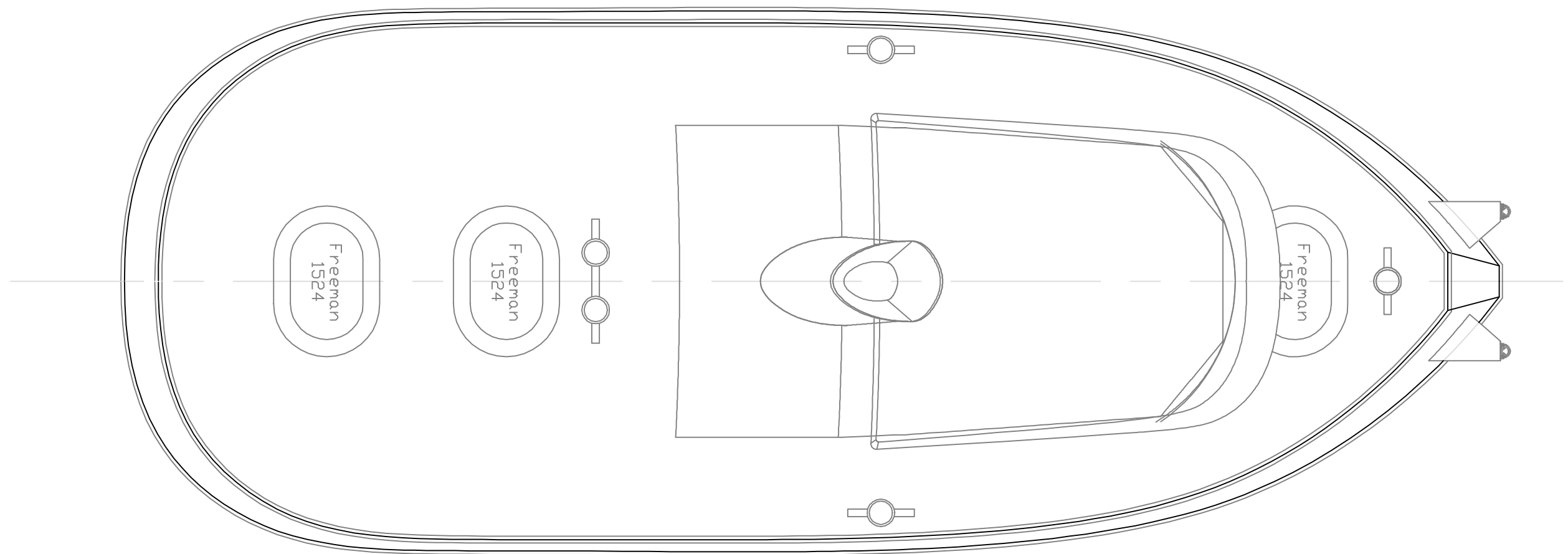
PROFILE

DIROCCO 23' TUG

SCALE 1/2" = 1'	DES/DWN WAL	DATE 12/18/06
--------------------	----------------	------------------

<i>Response Marine, Inc.</i> Newburyport, MA www.responsemarine.com	SHEET DWG NO. 267-01
--	-------------------------

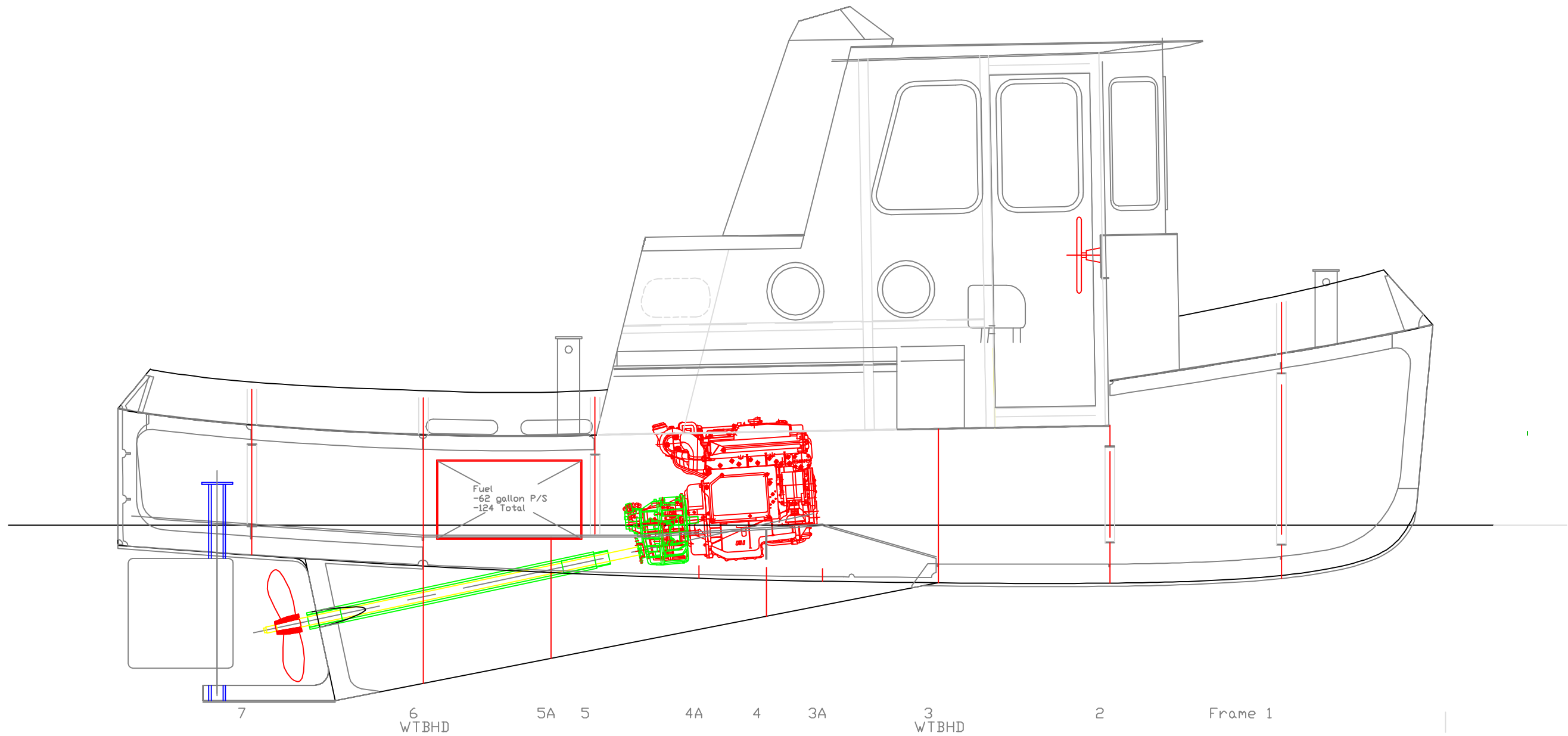
REV.	DESCRIPTION



OUTBOARD PLAN

DIRROCCO 23' TUG		
SCALE 1/2" = 1'	DES/DWN WAL	DATE 12/18/06
<i>Response Marine, Inc.</i> Newburyport, MA www.responsemarine.com		SHEET
		DWG NO. 267-02

REV.	DESCRIPTION

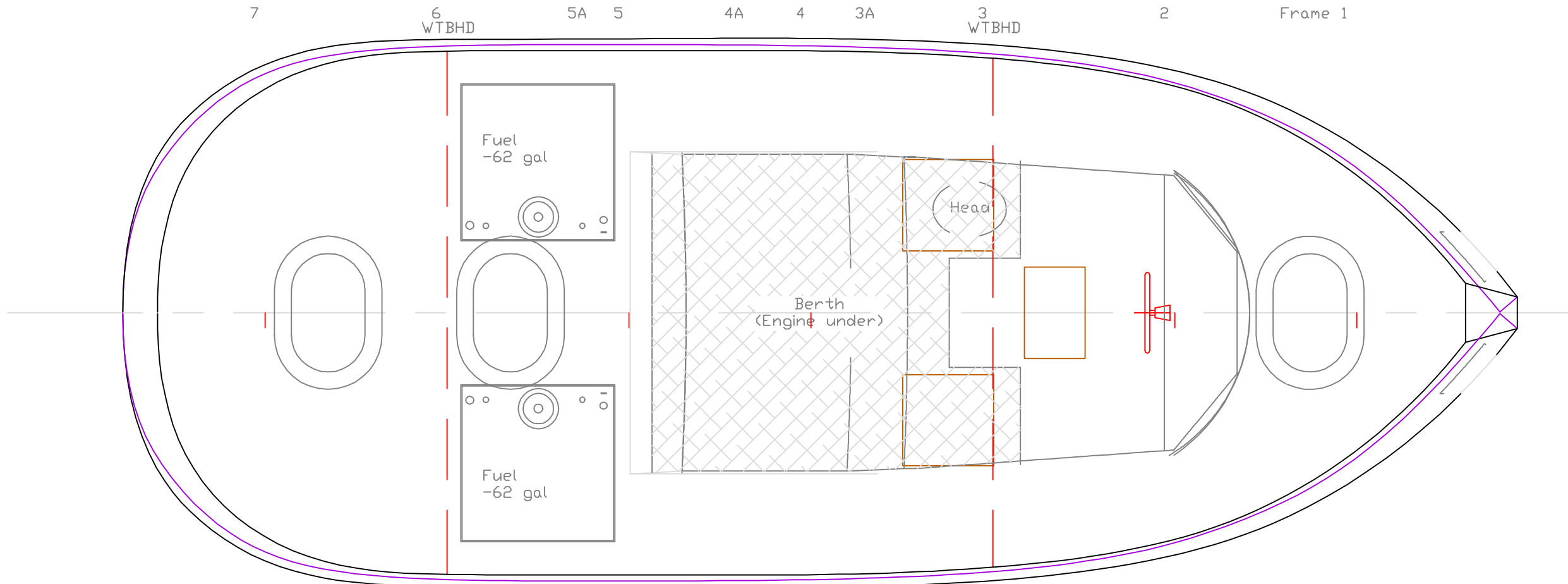


INBOARD PROFILE
DIRROCCO 23' TUG

SCALE 1/2" = 1'	DES/DWN WAL	DATE 12/18/06
--------------------	----------------	------------------

<i>Response Marine, Inc.</i> Newburyport, MA www.responsemarine.com		SHEET DWG NO. 267-03
--	--	-------------------------

REV.	DESCRIPTION



INBOARD PLAN

DIRROCCO 23' TUG

SCALE 1/2" = 1'	DES/DWN WAL	DATE 12/18/06
--------------------	----------------	------------------

SHEET	
Response Marine, Inc. Newburyport, MA www.responsemarine.com	DWG NO. 267-04

REV.	DESCRIPTION