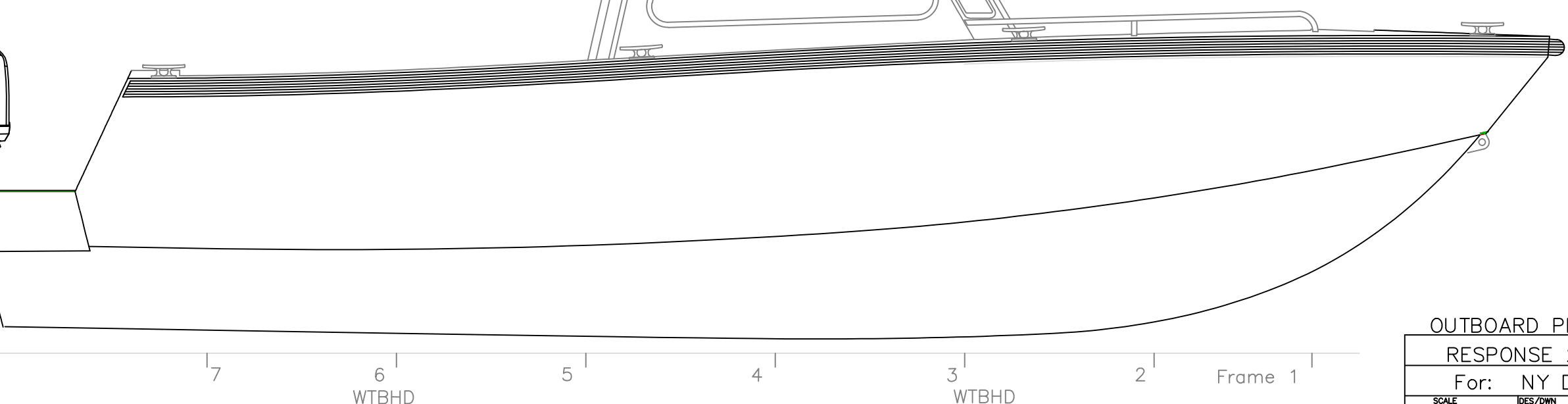
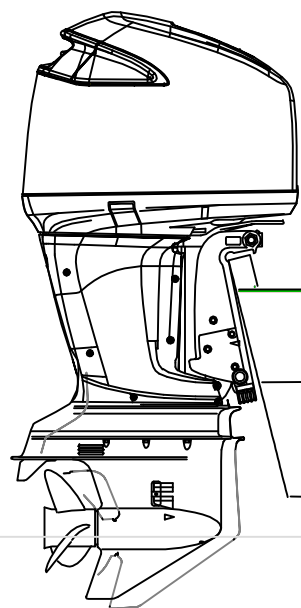
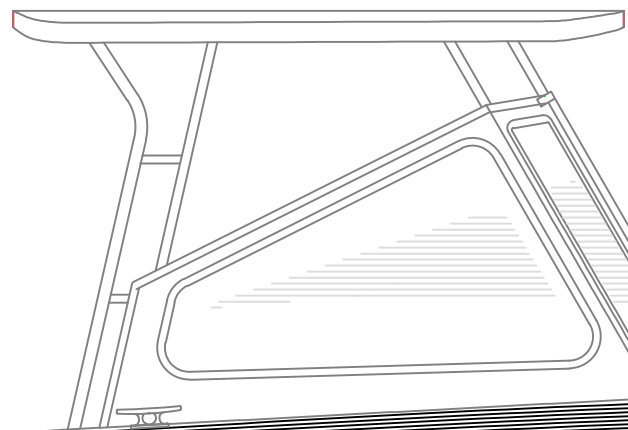
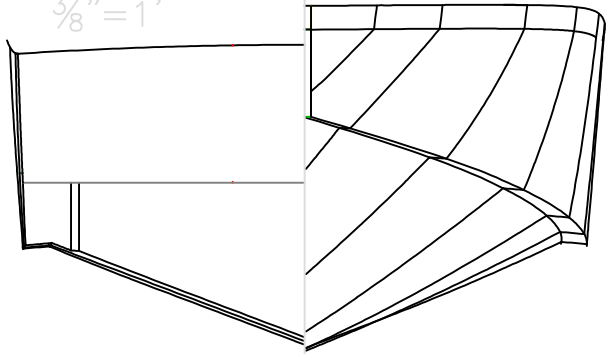


PARTICULARS~	
Hull LOA;	25' 4" (w/ 3" Rub Rail)
Hull Beam;	8' 9" (w/ 3" Rub Rail)
Draft;	1' 6"
Displacement;	5,750 lbs. (Normal Operating)

BODY PLAN
3/8" = 1'



OUTBOARD PLAN & PROFILE

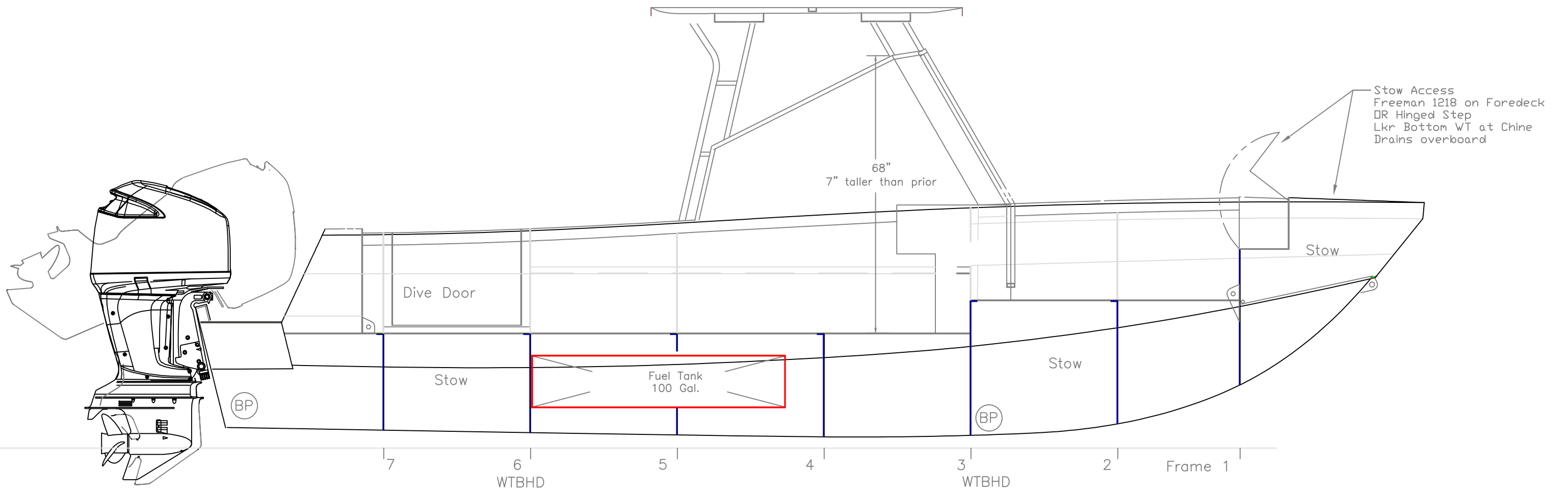
RESPONSE 255 DTC

For: NY DEC

SCALE 1/2" = 1'	DES/DWN WAL	DATE 12/19/13
--------------------	----------------	------------------

REV.	DESCRIPTION
1	Changed WS height, fwd stow, OA Meas

Response Marine, Inc.
Newburyport, MA, www.responsemarine.com DWG NO. 245-1-01A



INBOARD PROFILE

RESPONSE 255 DTC

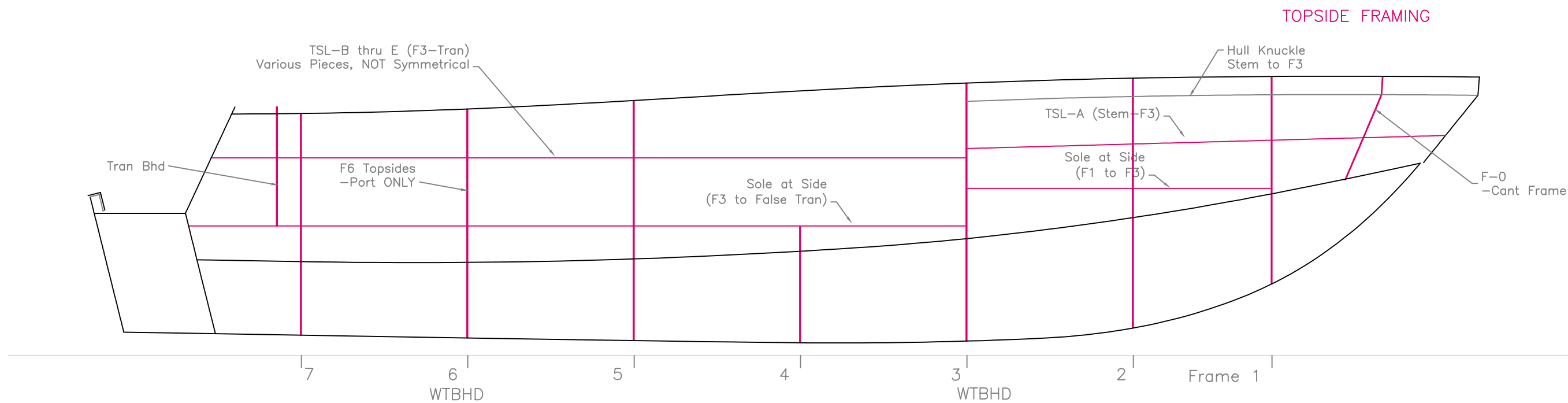
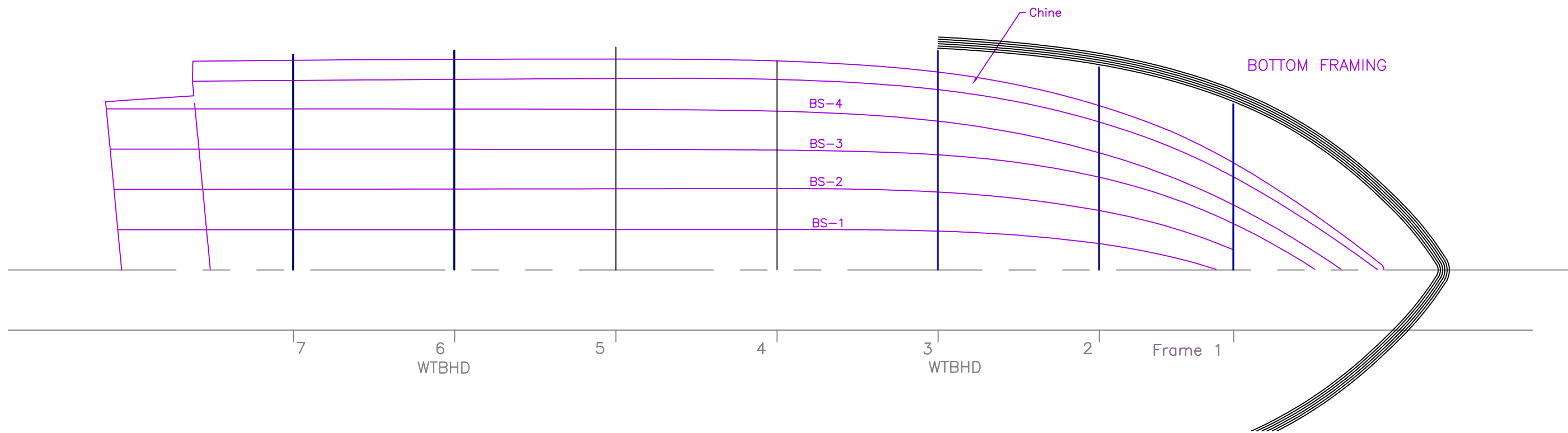
For: NY DEC

SCALE 1/2" = 1'	DES/DWN WAL	DATE 9/10/13
--------------------	----------------	-----------------

REV.	DESCRIPTION
	Changed WS height, fwd stow

Response Marine, Inc.
Newburyport, MA, www.responsemarine.com

SHEET	DWG. NO. 245-1-02A
-------	-----------------------



HULL STIFFENERS

RESPONSE 239 DTC

For: NY DEC

SCALE 1/2" = 1'	DES/DWN WAL	DATE 8/3/05
--------------------	----------------	----------------

SHEET	
-------	--

Response Marine, Inc.

REV.	DESCRIPTION	DWG NO. 245-2-02
------	-------------	---------------------

Newburyport, MA, www.responsemarine.com