

Particulars~

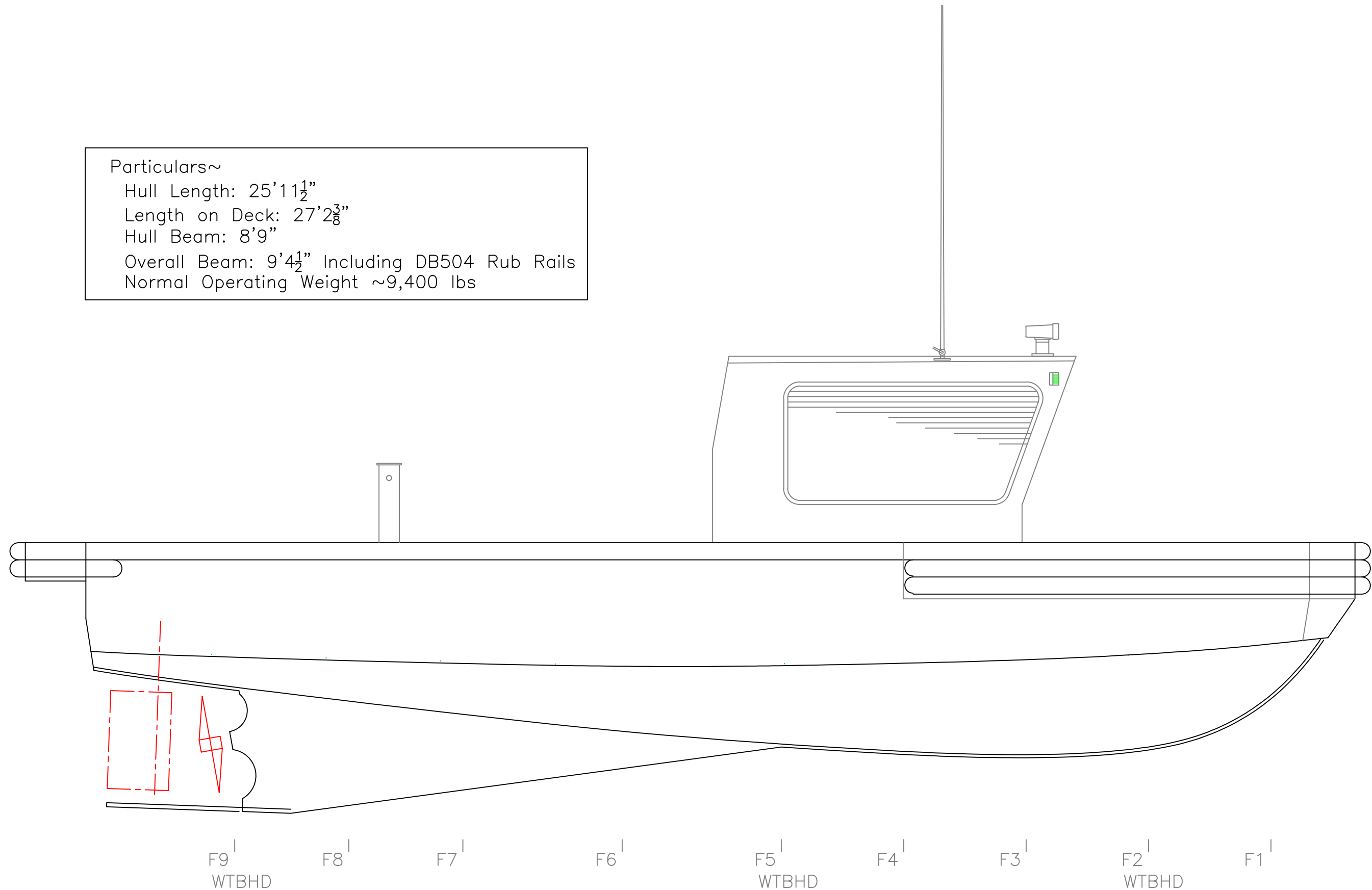
Hull Length: 25'11 $\frac{1}{2}$ "

Length on Deck: 27'2 $\frac{3}{8}$ "

Hull Beam: 8'9"

Overall Beam: 9'4 $\frac{1}{2}$ " Including DB504 Rub Rails

Normal Operating Weight ~9,400 lbs



F9 |
WTBHD

F8 |

F7 |

F6 |

F5 |
WTBHD

F4 |

F3 |

F2 |
WTBHD

F1 |

PROFILE

26'x8'9" LINE HANDLER

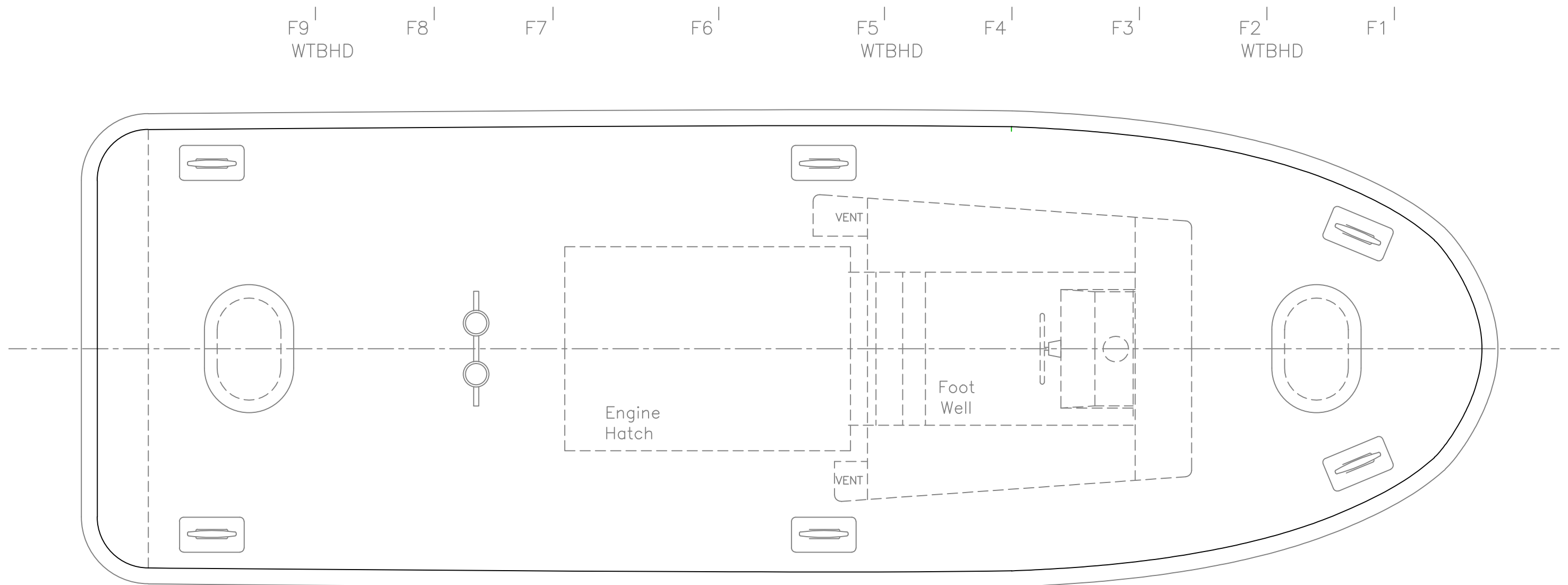
SOUND MARINE

SCALE 1/2"=1'	DES/DWN WAL/JCC	DATE 9/9/11
------------------	--------------------	----------------

REV.	DESCRIPTION

Response Marine, Inc.
Newburyport, MA, www.responsemarine.com

SHEET	DWG NO.
	402-01



DECK PLAN

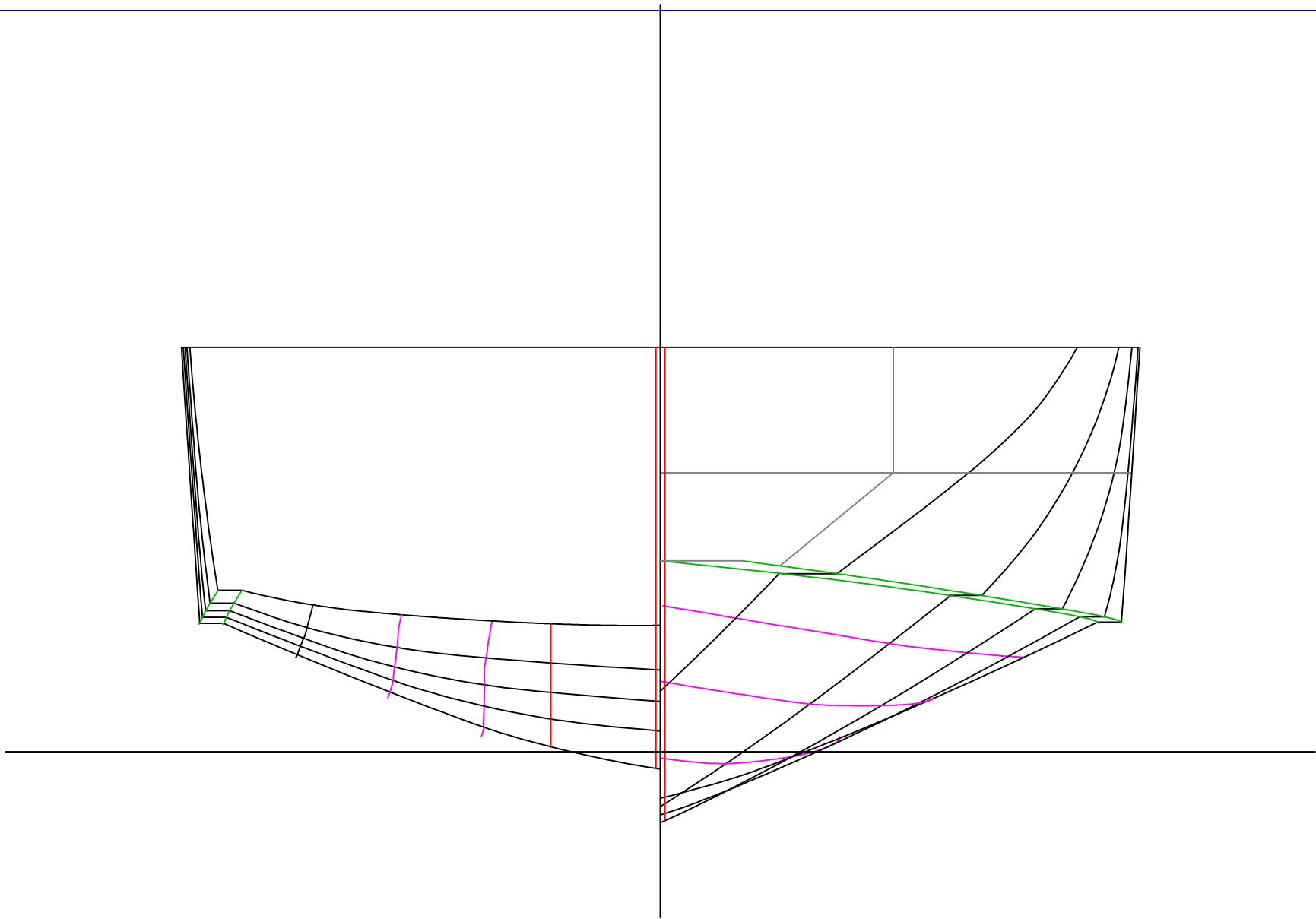
26' x 8'9" LINE HANDLER

SOUND MARINE

SCALE 1/2"=1'	DES/DWN WAL/JCC	DATE 9/9/11
------------------	--------------------	----------------

REV.	DESCRIPTION

Response Marine, Inc.
 Newburyport, MA, www.responsemarine.com
 SHEET
 DWG NO. 402-02



BODY PLAN (stations)

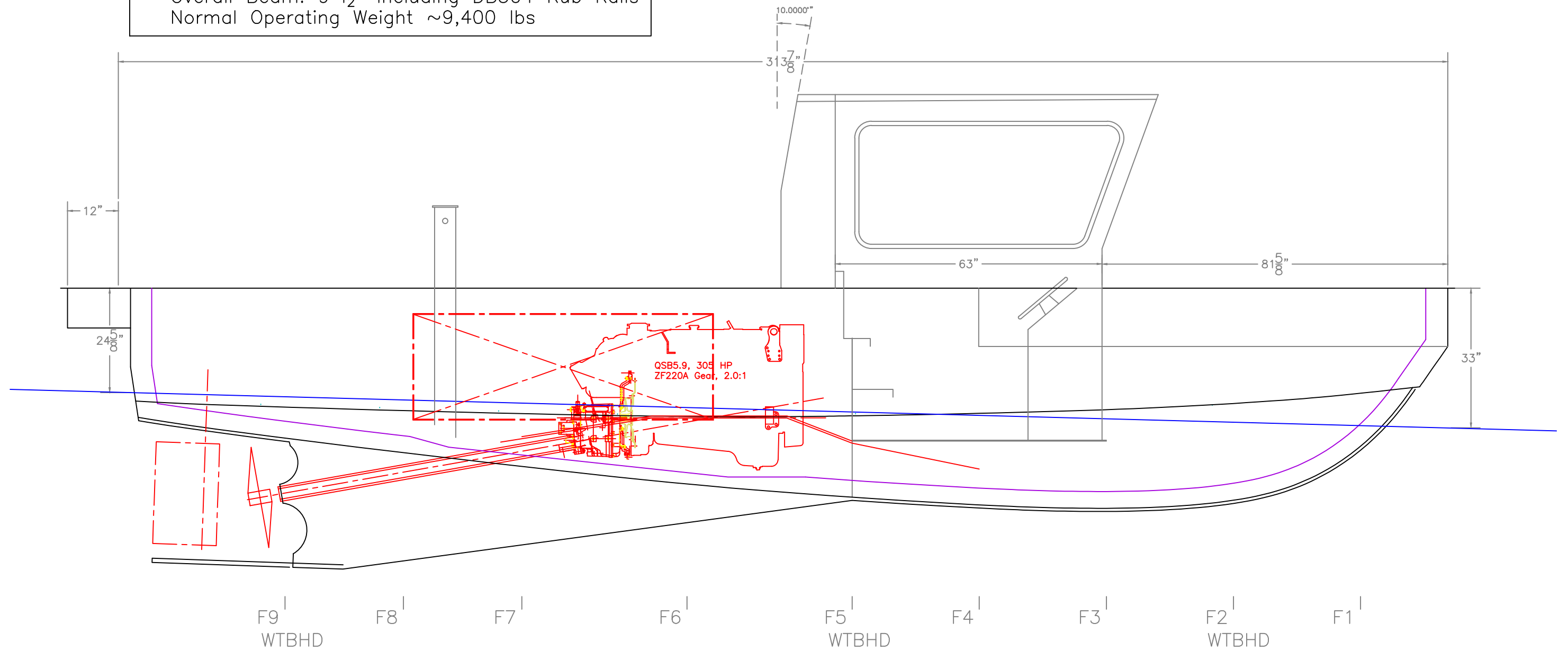
26' x 8'9" LINE HANDLER

SOUND MARINE

SCALE 3/4"=1'	DES/DWN WAL/JCC	DATE 6/20/11
Response Marine, Inc. Newburyport, MA, www.responsemarine.com		SHEET DWG NO. 402-03

REV.	DESCRIPTION

Particulars~
 Hull Length: 25'11½"
 Length on Deck: 27'2¾"
 Hull Beam: 8'9"
 Overall Beam: 9'4½" Including DB504 Rub Rails
 Normal Operating Weight ~9,400 lbs



26' LINE HANDLER; IB PROFILE		
SOUND MARINE		
SCALE 1/2"=1'	DES/DWN WAL/JCC	DATE 9/9/11
Response Marine, Inc. Newburyport, MA, www.responsemarine.com		SHEET DWG NO. 402-04

REV.	DESCRIPTION