

Response Marine, Inc. Stock for Kelley 42

File: RMides\Norvelle\Kelley42

revised: 6/29/05

Print Date: 2/8/07

**SHEET/PLATE TO CUTTER**

<u>Part</u>	<u>QTY</u>	<u>Item</u>	<u>Thick</u>	<u>Width</u>	<u>Lngh</u>	<u>lbs/ft^2</u>	<u>lbs</u>
	4	3/16" Sheet- 5052	0.190	72	240	2.67	1,282
	5	3/16" Sheet- 5052	0.190	72	300	2.67	2,003
		3/16" Sheet- 5086 H32/116					
	2	3/16" Sheet- 5086 H32/116	0.190	96	240	2.67	854
	14	1/4" Plate- 5086 H116/117	0.250	96	300	3.456	9,677
Chine	1	3/8" Plate- 5086 H116/117	0.375	60	240	5.184	518
Keel	1	1/2" Plate- 5086 H116/H117	0.500	48	240	6.91	553
						Total Sheet/Plate	14,887

**EXTRUSION & SHEET FOR STOCK****Does not include:**

- Joinerwork Stock
- Split Pipe Rails & Pipe Rails
- Transom Platform
- Fwd Cabin Sole]

<b><u>SHEET</u></b>							
<u>Part</u>	<u>QTY</u>	<u>Item</u>	<u>Thick</u>	<u>Width</u>	<u>Lngh</u>	<u>lbs/ft^2</u>	<u>lbs</u>
Decks, Vent Liners	4	3/16" Sheet- 5052	0.190	60	240	2.67	1,068
TOTAL ALL SHEET/PLATE							15,955

<b><u>EXTRUSIONS</u></b>								
<u>Part</u>	<u>QTY</u>	<u>Item</u>	<u>Thick</u>	<u>Dims</u>	<u>Lngh</u>	<u>Alloy</u>	<u>lbs/ft</u>	<u>lbs</u>
Deck CL	1	I Beam	0.170	3x2.33x1.96#	25	6061 T6	1.96	49
Bhds & House Sides for Joiner	14	Angle	0.25	2x2	25	6061 T6	1.11	389
Roof Girders	2	Angle	0.25	4x4	25	6061 T6	2.28	114
Door & House Side Framing	8	Angle	0.25	3x2	25	6061 T6	1.4	280
Cabin & House Sides/Back	9	Tee	0.25	1.5x1.5	25	6061 T6	0.87	196
Construction jiggig	8	Tee	0.25	1.5x1.5	25	6061 T6	0.87	174
Frame Flanges, Bhd Stiffs	30	Flat Bar	0.25	3	12	6061 T6	0.9	324
deck stiffs	32	Flat Bar	0.25	2	12	6061 T6	0.45	173
Hatch Gutters (1 extra)	4	Channel, sharp Corner	0.25	2x2	16	6063	1.634	105
PH Roof Beams	22	Channel	0.125	2x1	16	6063	0.58	204
conduit	1	Round Tube	0.125	6	20	6061 T6	1.788	36
PH Stanchions	1	Pipe		2.5" Sch 80	20	6061 T6	2.65	53
Sub Total Extrusion								2,096
TOTAL Plate & Extrusion								18,050

Response Marine, Plaz Parts for Norvelle - Kelley 42  
 File: RMIDes\Kelley42a 050516

Revised: 5/31/05  
 Print Date: 8/1/05

**3/16" Parts**

<u>Part #</u>	<u>Pieces</u>	<u>Description</u>	<u>Stock</u>
ALB	1	Anchor Locker Bottom	3- 2
CF	1	Cuddy Front	3- 11
CS-P	1	Cuddy Side, Port	3- 8
CS-S	1	Cuddy Side, Stbd	3- 9
CT-P	1	Cuddy Top, Port	3- 1
CT-S	1	Cuddy Top, Stbd	3- 2
FD-S	1	Foredeck, Stbd	3- 8
FD-P	1	Foredeck, Port	3- 9
C-BS	1	Side Deck Coaming, Stbd Fwd	3- 5
C-BP	1	Side Deck Coaming, Port Fwd	3- 5
C-A	1	Side Deck Coaming, Stem	3- 8
C-CP	1	Side Deck Coaming, Stbd Slant	3- 8
C-CS	1	Side Deck Coaming, Port Slant	3- 8
C-DP	1	Side Deck Coaming, Port Aft (Tran to Jog)	3- 2
C-DS	1	Side Deck Coaming, Stbd Aft (Tran to Jog)	3- 2
VJ-1	1	Visor Jig, Fwd CL	3- 7
VS-1	2	Visor Stiffener, FWD/Bottom @ 18" off CL	3- 7
VJ-2	2	Visor Jig, Fwd Cnrs at marks	3- 7
VJ-3	10	Visor Jig, Sides/Bottom from F5 aft	3- 7
VJ-4	3	Visor Jig, Aft Visor (Bottom)	3- 7
PHB-P	1	Pilothouse Back- Port side	3- 1
PHB-S	1	Pilothouse Back- Stbd side	3- 2
PHS-P	1	Pilothouse Side, Port	3- 10
PHS-S	1	Pilothouse Side, Stbd	3- 11
R-S	1	Roof, Stbd	3- 6
R-P	1	Roof, Port	3- 7
RJ	2	Pilothouse Roof Jigs	3- 1,3
SD-AP	1	Side Decks, Aft/Port	3- 5
SD-AS	1	Side Decks, Aft/Stbd	3- 5
MP-A1	1	Deck Margin Plate, Fwd	3- 3
MP-A2	1	Deck Margin Plate, Fwd	3- 3
MP-B1	1	Deck Margin Plate, Aft	3- 4
MP-B2	1	Deck Margin Plate, Aft	3- 4
S-P	1	Stairs, Port	3- 8

S-S	1	Stairs, Stbd	3- 9
SD-BS	1	Side Deck Aft, Stbd	3- 8
SD-BP	1	Side Deck Aft, Port	3- 9
PHW-P	1	Pilothouse Side Wing, Port	3- 11
PHW-S	1	Pilothouse Side Wing, Stbd	3- 10
TD	1	Transom Deck	3- 4
TDC	1	Transom Deck Coaming	3- 1
V-P	1	Visor, Port	3- 7
V-S	1	Visor, Stbd	3- 6
V-B	1	Visor, Aft	3- 1
WS-P	1	Windshield, Port	3- 11
WS-S	1	Windshield, Stbd	3- 10
WS-C	1	Windshield, Center	3- 10
WSF-21	1	Windshield Fairing, Port	3- 2
WSF-22	1	Windshield Fairing, Stbd	3- 2
WSF-1	1	Windshield Fairing, Center	3- 2
64	Total 3/16" Parts		

**1/4" Parts**

<u>Part #</u>	<u>Pieces</u>	<u>Description</u>	<u>Stock</u>
B-AP	1	Bottom Plate, Fwd Port	4- 4
B-AS	1	Bottom Plate, Fwd Stbd	4- 3
B-BP	1	Bottom Plate Aft Port	4- 8
B-BS	1	Bottom Plate Aft Stbd	4- 7
BL-1A	2	Bottom Longitudinal 1 (F2- F4)	4- 5,6
BL-1B	2	Bottom Longitudinal 1 (F5-F10)	4- 7,8
BL-1C	2	Bottom Longitudinal 1 (F10-Tran)	4- 5,6
BL-2A	2	Bottom Longitudinal 2 (F1-F9+)	4- 3,4
BL-2B	2	Bottom Longitudinal 2 (F9+ - Tran )	4- 5,6
BL-3A	2	Bottom Longitudinal 3 (F1-F5)	4- 1,2
BL-3B	2	Bottom Longitudinal 3 (F5-F10)	4- 7,8
BL-3C	2	Bottom Longitudinal 3 (F10-Tran)	4- 7,8
BL-4A	2	Bottom Longitudinal 4 (Stem - F8+)	4- 3,4
BL-4B	2	Bottom Longitudinal 4 (F8+ - Tran)	4- 5,6
BL-5A	2	Bottom Longitudinal 5 (Stem-F5)	4- 1,2
BL-5B	2	Bottom Longitudinal 5 (F5-F10)	4- 5,6
BL-5C	2	Bottom Longitudinal 5 (F10-Tran)	4- 3,4
BL-6A	2	Bottom Longitudinal 6 (Stem - F8+)	4- 5,6
BL-6B	2	Bottom Longitudinal 6 (F8+ - Tran)	4- 1,2

CBS-P	1	Cabin Berth Stiffener, Port	4- 13
CBS-S	1	Cabin Berth Stiffener, Stbd	4- 12
F0	1	Frame 0, Body	4- 9
F0-P	1	Frame 0, Upper Port	4- 9
F0-S	1	Frame 0, Upper Stbd	4- 9
F1	1	Frame 1, Body	4- 12
F10	1	Frame 10, Body	4- 11
F10-P	1	Frame 10, Upper Port	4- 11
F10-S	1	Frame 10, Upper Stbd	4- 11
F11	1	Frame 11, Body	4- 12
F11-P	1	Frame 11, Upper Port	4- 12
F11-S	1	Frame 11, Upper Stbd	4- 12
F12	1	Frame 12, Body	4- 9
F12-P	1	Frame 12, Upper Port	4- 9
F12-S	1	Frame 12, Upper Stbd	4- 9
F1-P	1	Frame 1, Upper Port	4- 9
F1-S	1	Frame 1, Upper Stbd	4- 9
F2	1	Frame 2, Body	4- 9
F2-P	1	Frame 2, Upper Port	4- 9
F2-S	1	Frame 2, Upper Stbd	4- 9
F3	1	Frame 3, Body	4- 13
F3-BP	1	Frame 3, Bulkhead, Port	4- 8
F3-BS	1	Frame 3, Bulkhead, Stbd	4- 8
F3-P	1	Frame 3, Upper Port	4- 9
F3-S	1	Frame 3, Upper Stbd	4- 9
F4	1	Frame 4, Body	4- 13
F4-P	1	Frame 4, Upper Port	4- 9
F4-S	1	Frame 4, Upper Stbd	4- 9
F5	1	Frame 5, Bulkhead, Body	4- 13
F5-B	1	Frame 5, Bulkhead, Upper	4- 14
F5-P	1	Frame 5, Upper Port	4- 9
F5-S	1	Frame 5, Upper Stbd	4- 9
F6	1	Frame 6, Body	4- 10
F6-P	1	Frame 6, Upper Port	4- 10
F6-S	1	Frame 6, Upper Stbd	4- 10
F7	1	Frame 7, Body	4- 9
F7-P	1	Frame 7, Upper Port	4- 9
F7-S	1	Frame 7, Upper Stbd	4- 9
F8	1	Frame 8, Body	4- 10
F8-P	1	Frame 8, Upper Port	4- 9
F8-S	1	Frame 8, Upper Stbd	4- 9
F9	1	Frame 9, Body	4- 11

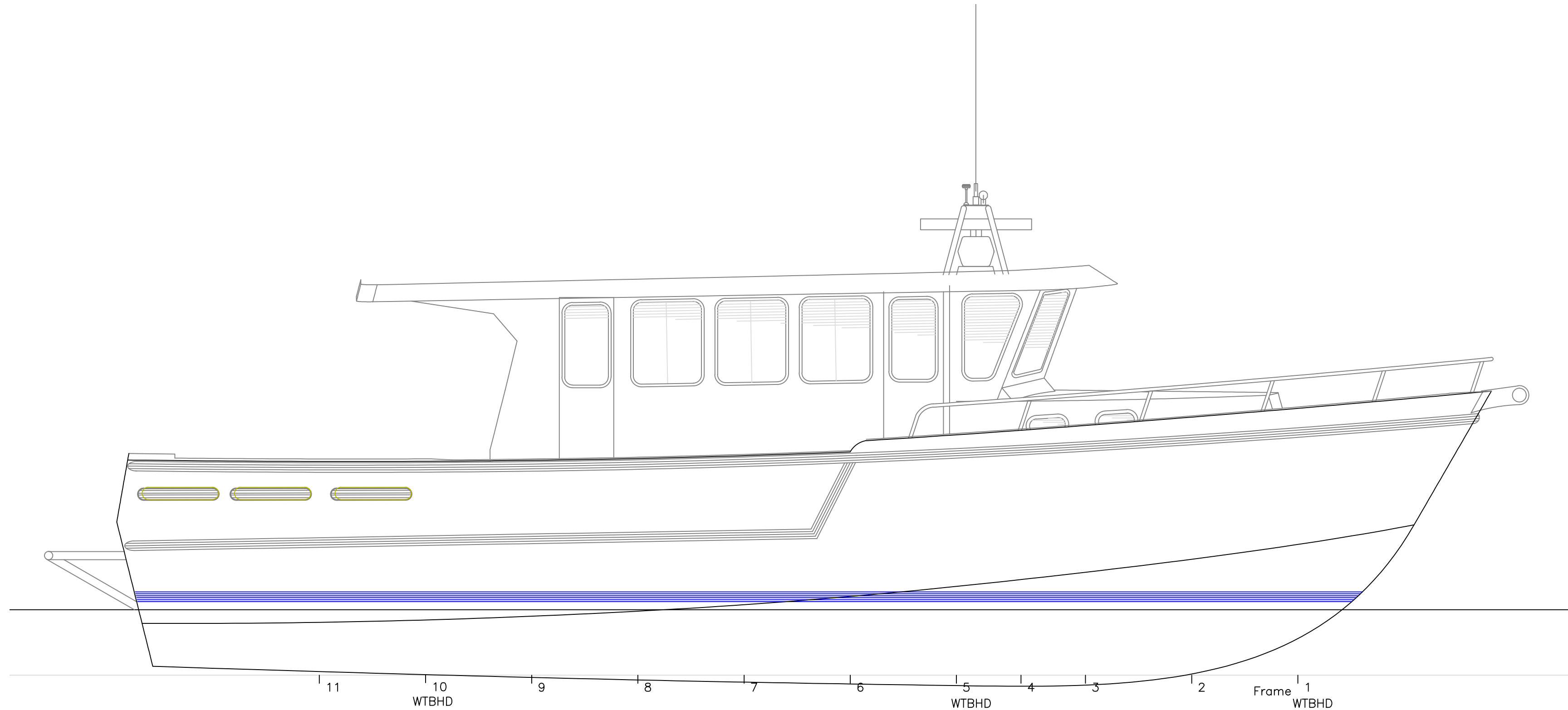
F9-P	1	Frame 9, Upper Port	4- 11
F9-S	1	Frame 9, Upper Stbd	4- 11
FT-11	1	Aft Fuel Tank, Skin	4- 13
FT-12	2	Aft Fuel Tank Ends	4- 13
FT-13	2	Aft Fuel Tank Long'l Baffle	4- 13
FT-14	2	Aft Fuel Tank Long'l Baffle	4- 13
FT-15	1	Aft Fuel Tank, Top	4- 14
FT-21	1	Fwd Fuel Tank, Skin	4- 11
FT-22	2	Fwd. Fuel Tank Ends	4- 10,11
FT-23	2	Fwd. Fuel Tank Long'l Baffle	4- 11
FT-24	2	Fwd. Fuel Tank Long'l Baffle	4- 10
FT-25	1	Fwd Fuel Tank, Top	4- 14
TL	1	Transom, Lower	4- 12
TS-AP	1	Topsides, Fwd Port	4- 2
TS-AS	1	Topsides, Fwd Stbd	4- 1
TS-BP	1	Topsides, Aft Port	4- 5
TS-BS	1	Topsides, Aft Stbd	4- 6
TSL-1A	2	Topside Longitudinal 1 (F5-F10)	4- 5,6
TSL-1B	2	Topside Longitudinal 1 (F10-Tran)	4- 5,6
TSL-2	2	Topside Longitudinal 2 (Stem-F2)	4- 5,6
TSL-3A	2	Topside Longitudinal 3 (Stem-F6)	4- 1,2
TSL-3B	2	Topside Longitudinal 3 (F6-Tran)	4- 7,8
TU	1	Transom, Upper	4- 14
	110	Total 1/4" Parts	

**3/8" Parts**

<u>Part #</u>	<u>Pieces</u>	<u>Description</u>	<u>Stock</u>
C-A	2	Chine, fwd	6-1
C-B	2	Chine, mid	6-1
C-C	2	Chine, aft	6-1
K-A	1	Keel, Fwd	6-1
K-B	1	Keel, Mid	6-1
K-C	1	Keel, Aft	6-1
	9	Total 3/8" Parts	

**1/2" Parts**

<u>Part #</u>	<u>Pieces</u>	<u>Description</u>	<u>Stock</u>
K-A	1	Keel, Foredeck Stiff	8-1
K-B	1	Keel, Fwd	8-1
K-C	1	Keel, Mid	8-1
K-D	1	Keel, Aft	8-1
K-E	1	Keel, Transom Stiff	8-1
	5	Total 1/2" parts	
	188	Total Cut Parts	



# OUTBOARD PROFILE

KELLEY- 42' X 14' 6"

For: Doug Kelley

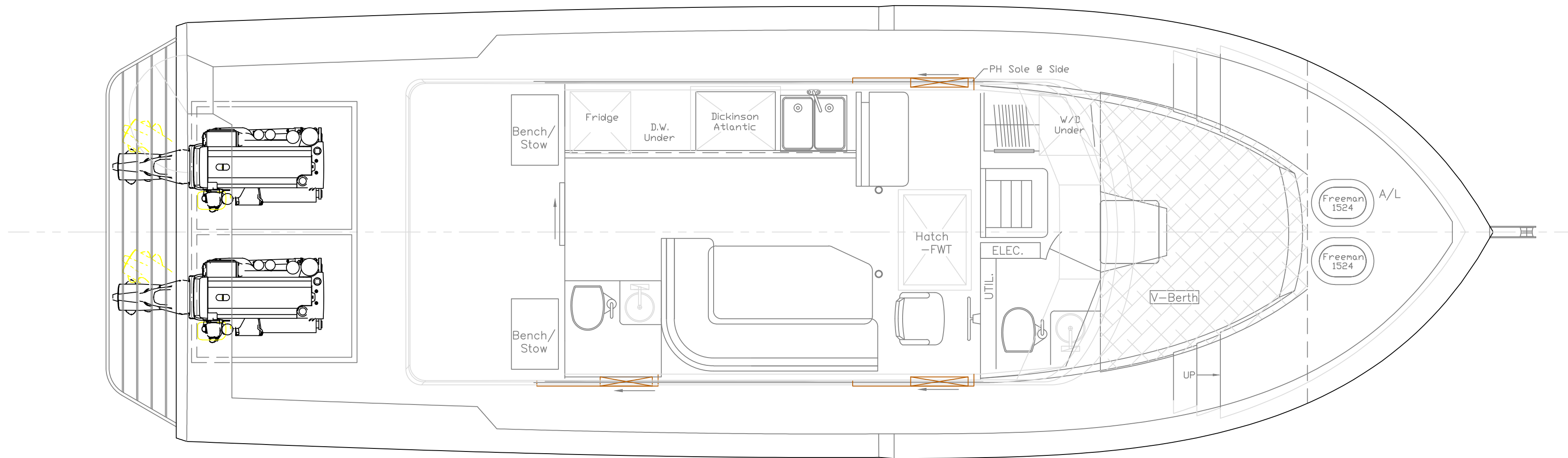
SCALE 3/8" = 1'	DES/DWN WAL	DATE 6/29/05
--------------------	----------------	-----------------

<b>Response Marine, Inc.</b>		SHEET
------------------------------	--	-------

Newburyport, MA, <a href="http://www.responsemarine.com">www.responsemarine.com</a>	DWG NO. 239-01PR
---	---------------------

REV.	DESCRIPTION





# OUTBOARD PLAN

KELLEY- 42' X 14' 6"

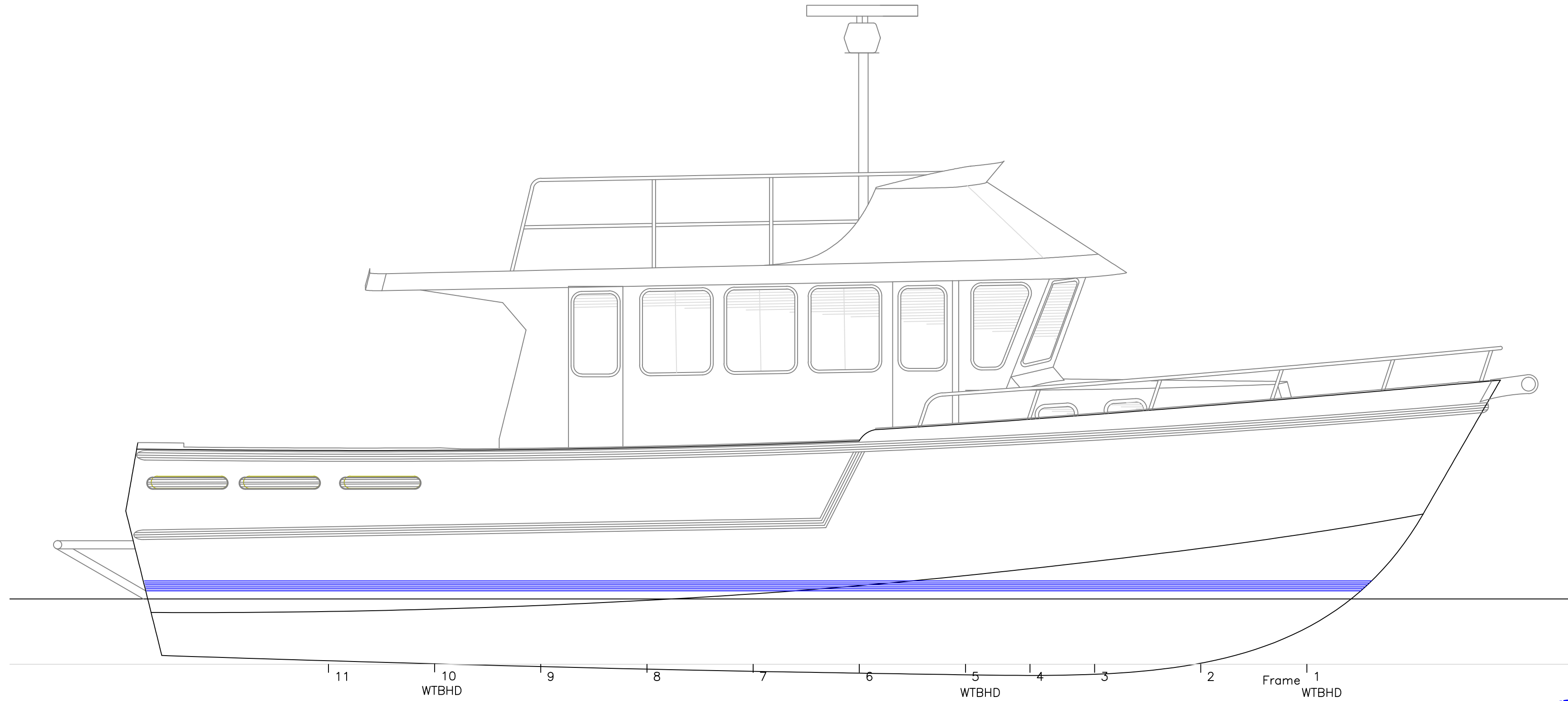
For: Doug Kelley

SCALE 3/8" = 1'	DES/DWN WAL	DATE 6/29/05
--------------------	----------------	-----------------

**Response Marine, Inc.**

Newburyport, MA, [www.responsemarine.com](http://www.responsemarine.com) DWG NO. 239-01PL

REV.	DESCRIPTION



**PRELIMINARY W/ FLYBRIDGE 6/28/07**

**OUTBOARD PROFILE**

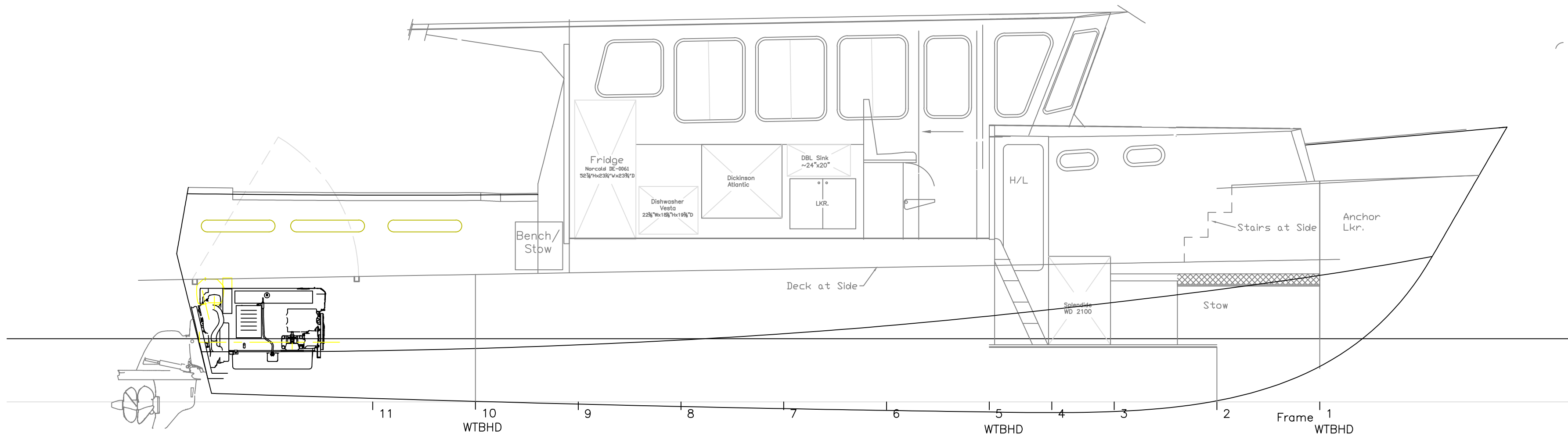
KELLEY- 42' X 14' 6"

For: Doug Kelley

SCALE 3/8" = 1'	DES/DWN WAL	DATE 6/29/05
--------------------	----------------	-----------------

<b>Response Marine, Inc.</b>	SHEET
Newburyport, MA, <a href="http://www.responsemarine.com">www.responsemarine.com</a>	DWG NO. 239-01PR

REV.	DESCRIPTION



# INBOARD PROFILE

KELLEY- 42' X 14' 6"

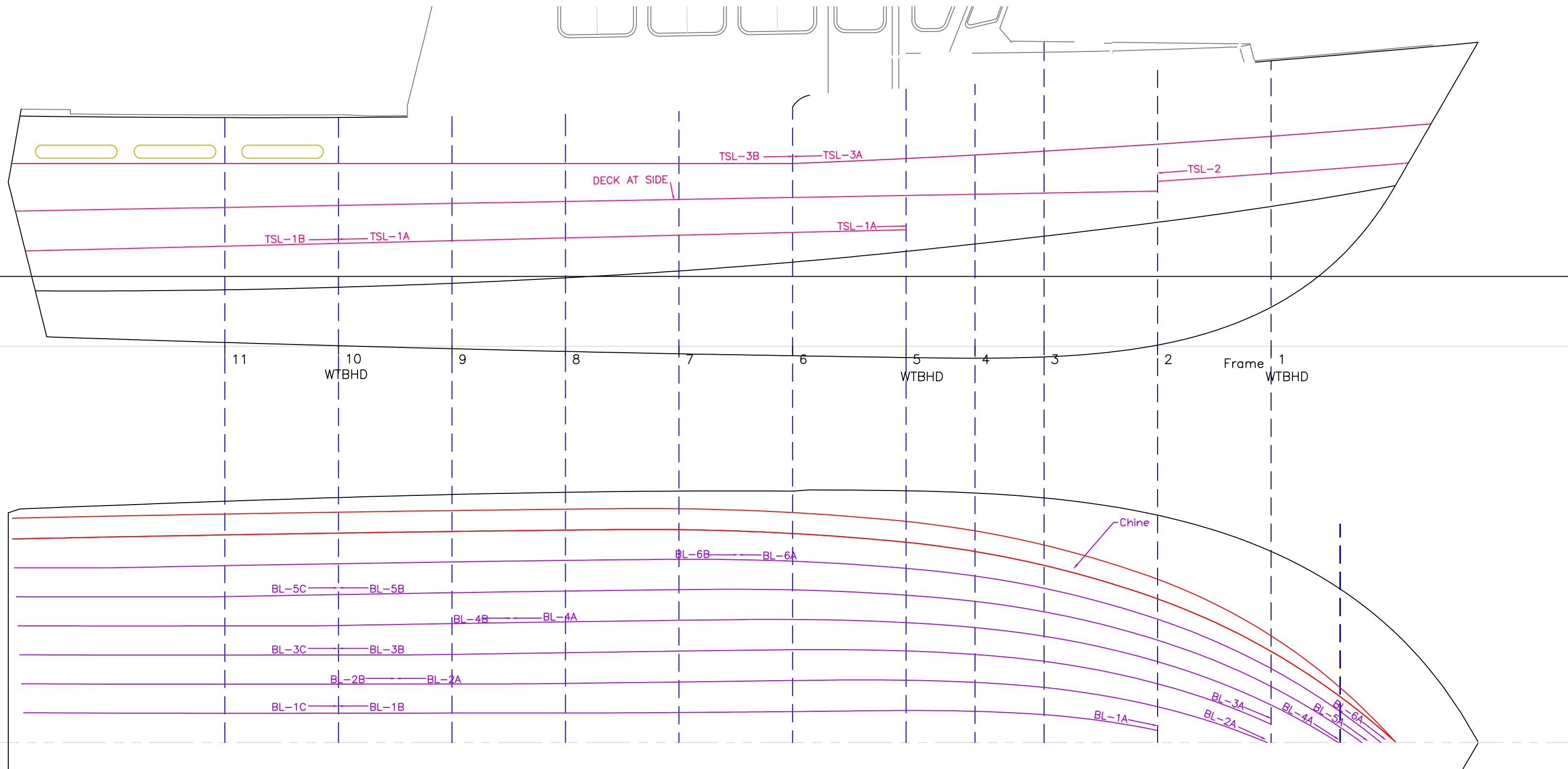
For: Doug Kelley

SCALE 3/8" = 1'	DES/DWN WAL	DATE 6/29/05
--------------------	----------------	-----------------

<b>Response Marine, Inc.</b>		SHEET
------------------------------	--	-------

Newburyport, MA, <a href="http://www.responsemarine.com">www.responsemarine.com</a>	DWG. NO. 239-02PR
---	----------------------

REV.	DESCRIPTION



# HULL STRINGERS

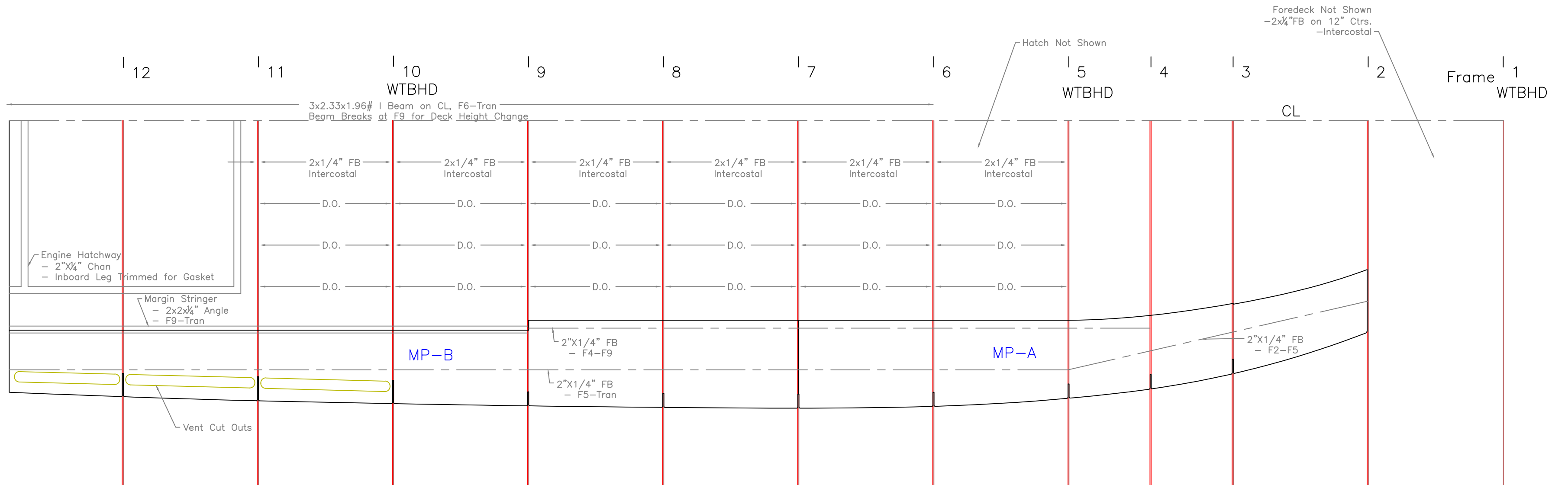
KELLEY- 42' X 14' 6"

For: Doug Kelley

SCALE 3/8" = 1'	DES/DWN WAL	DATE 6/29/05
--------------------	----------------	-----------------

<b>Response Marine, Inc.</b>		SHEET
Newburyport, MA, <a href="http://www.responsemarine.com">www.responsemarine.com</a>	DWG. NO. 239-2-02	

REV.	DESCRIPTION



# DECK CONSTRUCTION

KELLEY- 42' X 14' 6"

For: Doug Kelley

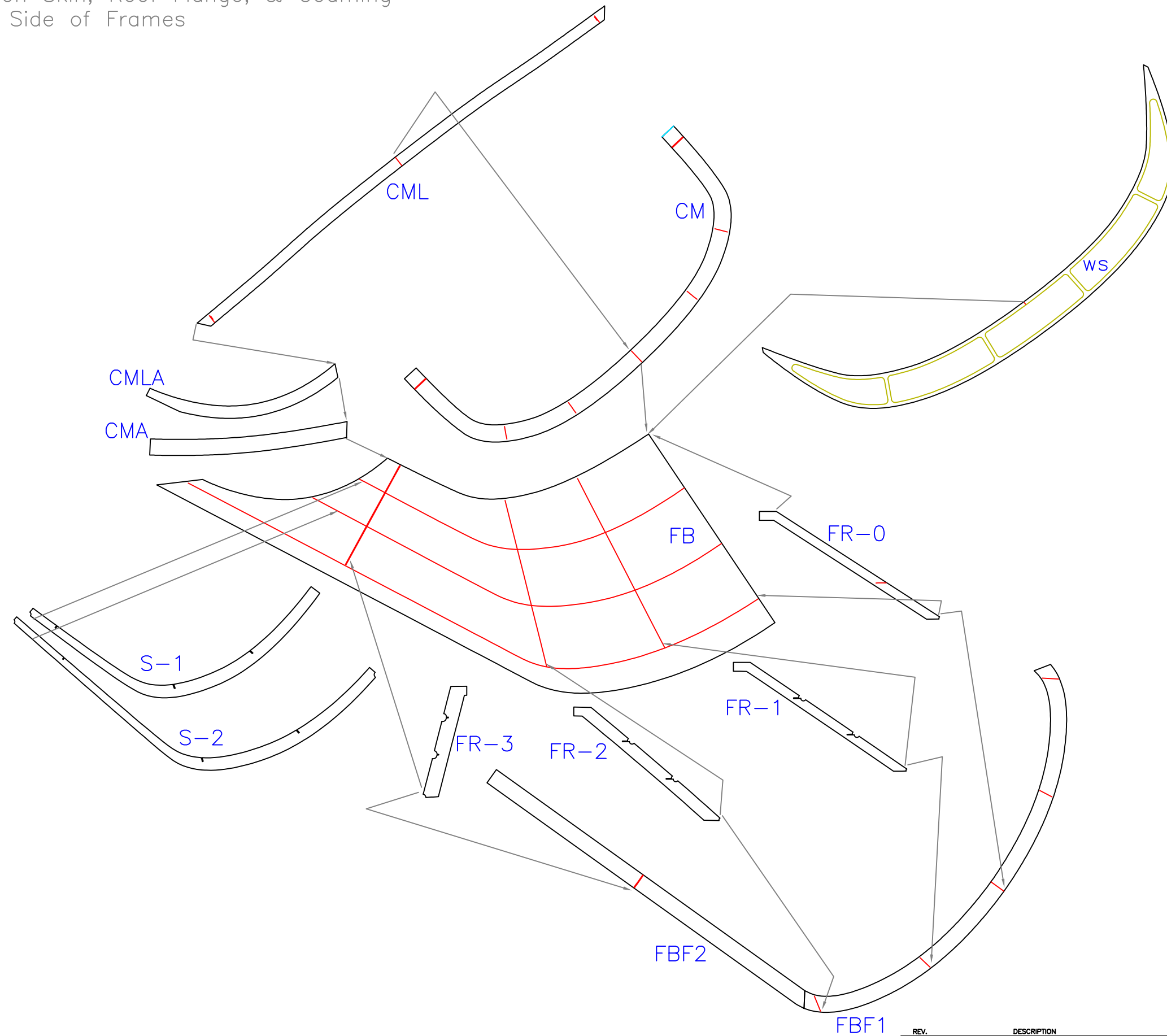
SCALE 1/2" = 1'	DES/DWN WAL	DATE 6/29/05
--------------------	----------------	-----------------

<b>Response Marine, Inc.</b>		SHEET
------------------------------	--	-------

Newburyport, MA, <a href="http://www.responsemarine.com">www.responsemarine.com</a>	DWG. NO. 239-2-03
---	----------------------

REV.	DESCRIPTION

Notes:  
 1) Frame marks on Skin, Roof Flange, & Coaming are Outboard Side of Frames



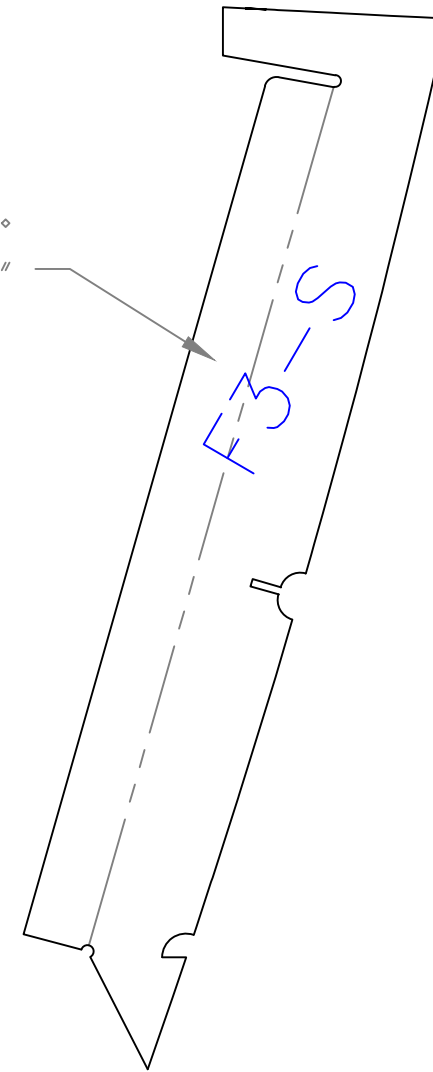
FLYBRIDGE PARTS		
KELLEY- 42' X 14' 6"		
For: Doug Kelley		
SCALE NONE	DES/DWN WAL	DATE 8/28/07
<b>Response Marine, Inc.</b>		SHEET
Newburyport, MA, <a href="http://www.responsemarine.com">www.responsemarine.com</a>		DWG. NO. 239-4-01

REV.	DESCRIPTION

Notes:

- 1) Same Bending dimensions apply to all frames (13 total).
- 2) Each frame has an "S" & a "P" part, to be bent mirror image.
- 3) Install parts with flanges bent AFT.

Bend this Flange up 90°  
Set Back Gauge at 2<sup>3</sup>/<sub>4</sub>"



FRAME BENDING

KELLEY- 42' X 14' 6"

For: Doug Kelley

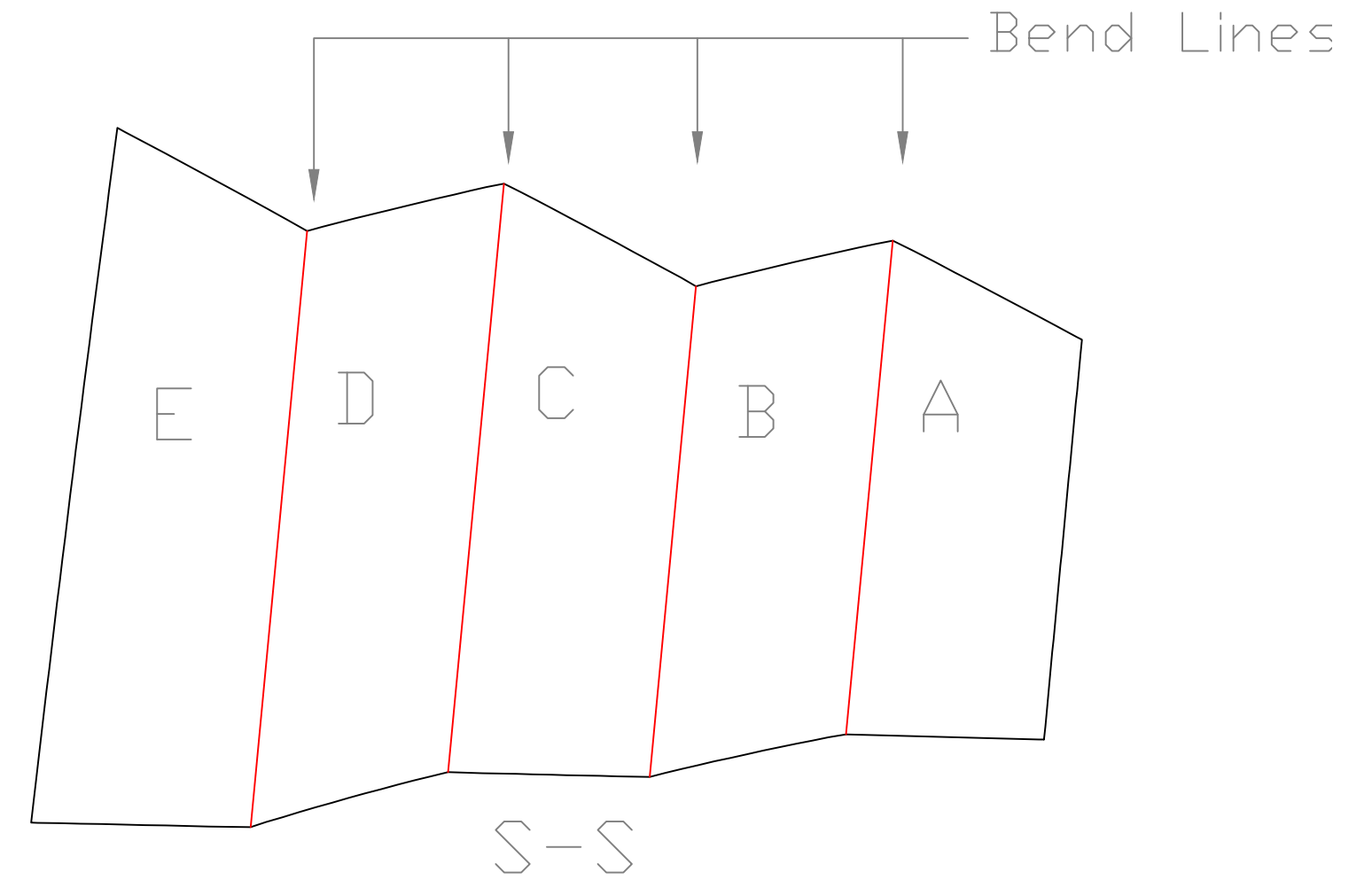
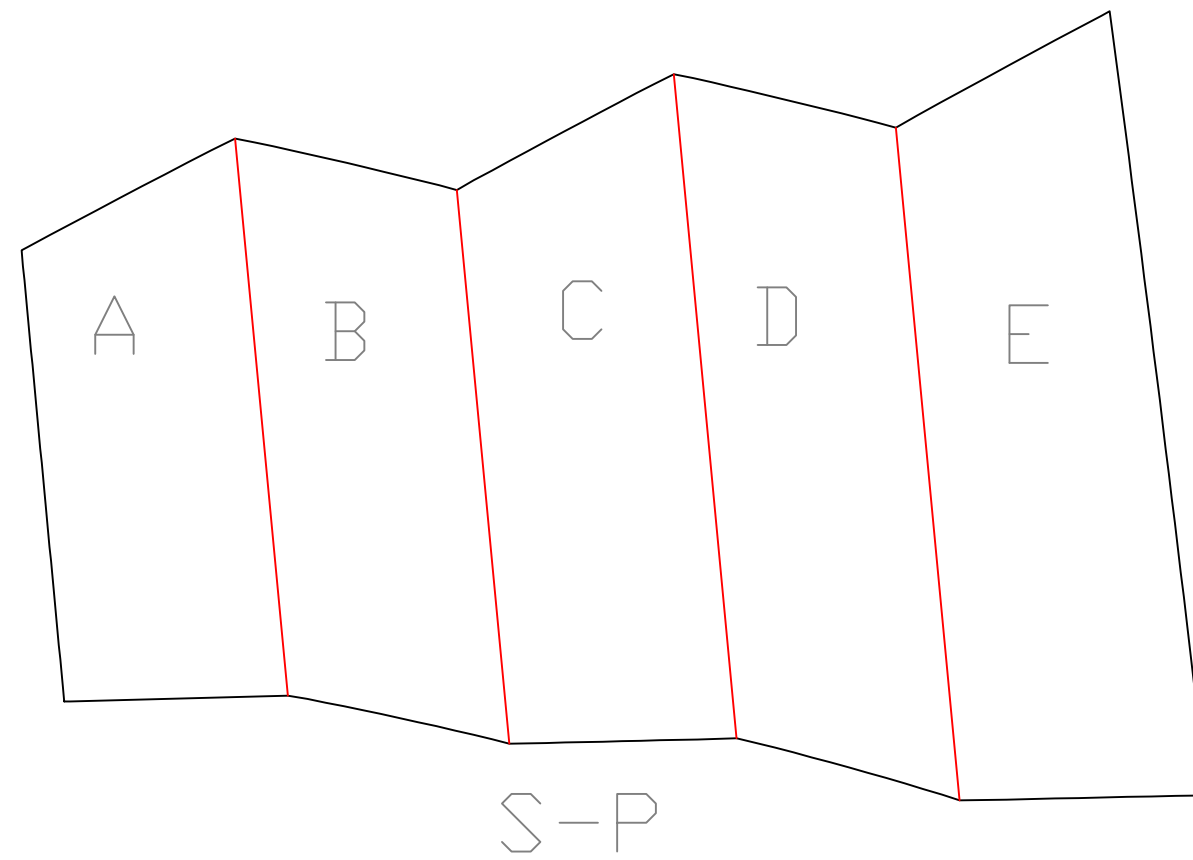
SCALE 1 1/2" = 1'	DES/DWN WAL	DATE 6/22/05
----------------------	----------------	-----------------

SHEET	
-------	--

<b>Response Marine, Inc.</b>		DWG. NO. 239-B-01
------------------------------	--	----------------------

Newburyport, MA, [www.responsemarine.com](http://www.responsemarine.com)

REV.	DESCRIPTION
------	-------------



Bends:  
 A-B; 90° down  
 B-C; 90° up  
 C-D; 90° down  
 D-E; 90° up

Material is  $\frac{3}{16}$ " 5052

STAIR BENDING

KELLEY- 42' X 14' 6"

For: Doug Kelley

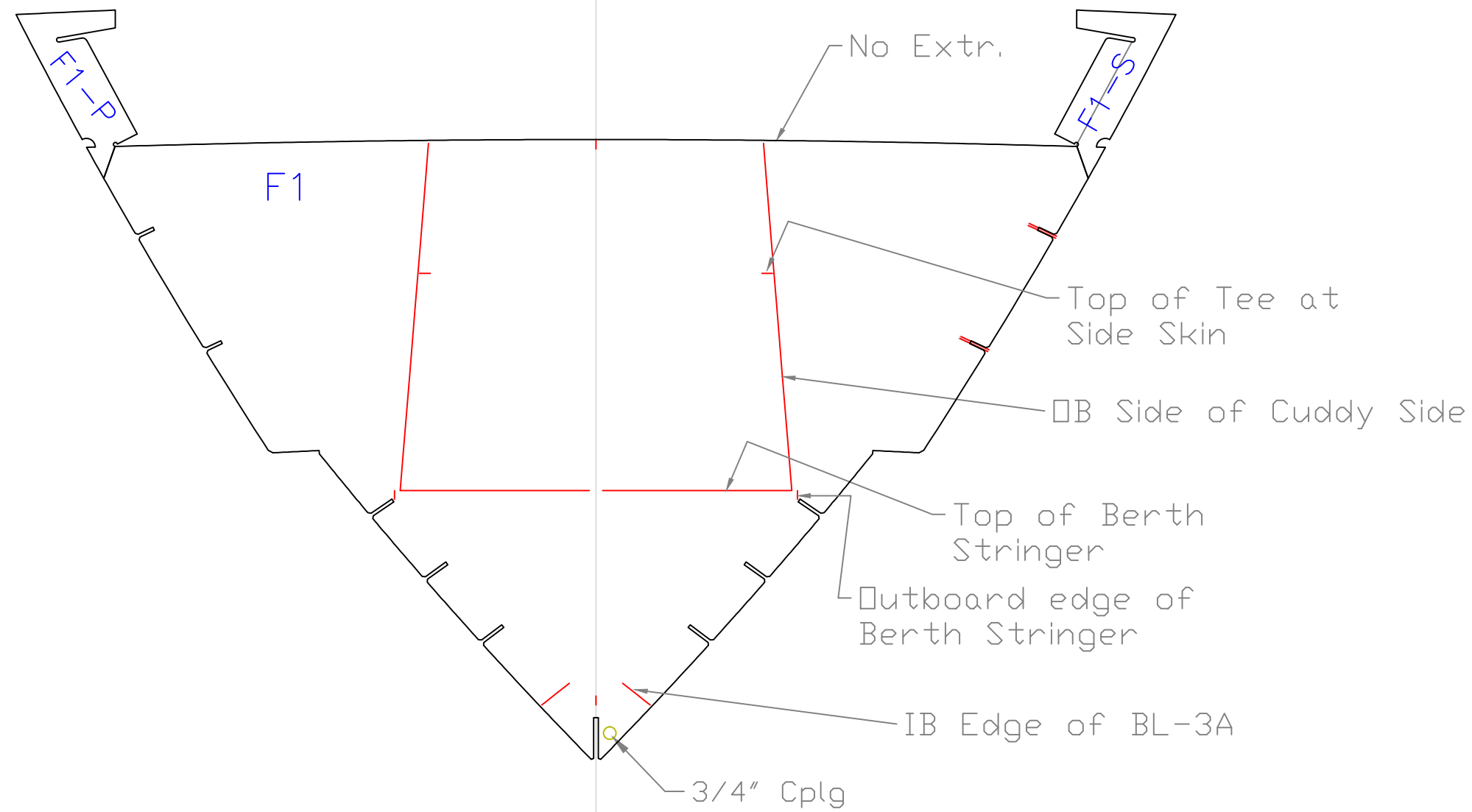
SCALE 1 1/2" = 1'	DES/DWN WAL	DATE 6/22/05
----------------------	----------------	-----------------

REV.	DESCRIPTION	SHEET
------	-------------	-------

**Response Marine, Inc.**  
 Newburyport, MA, www.responsemarine.com

DWG NO.  
239-B-01





FRAME 1

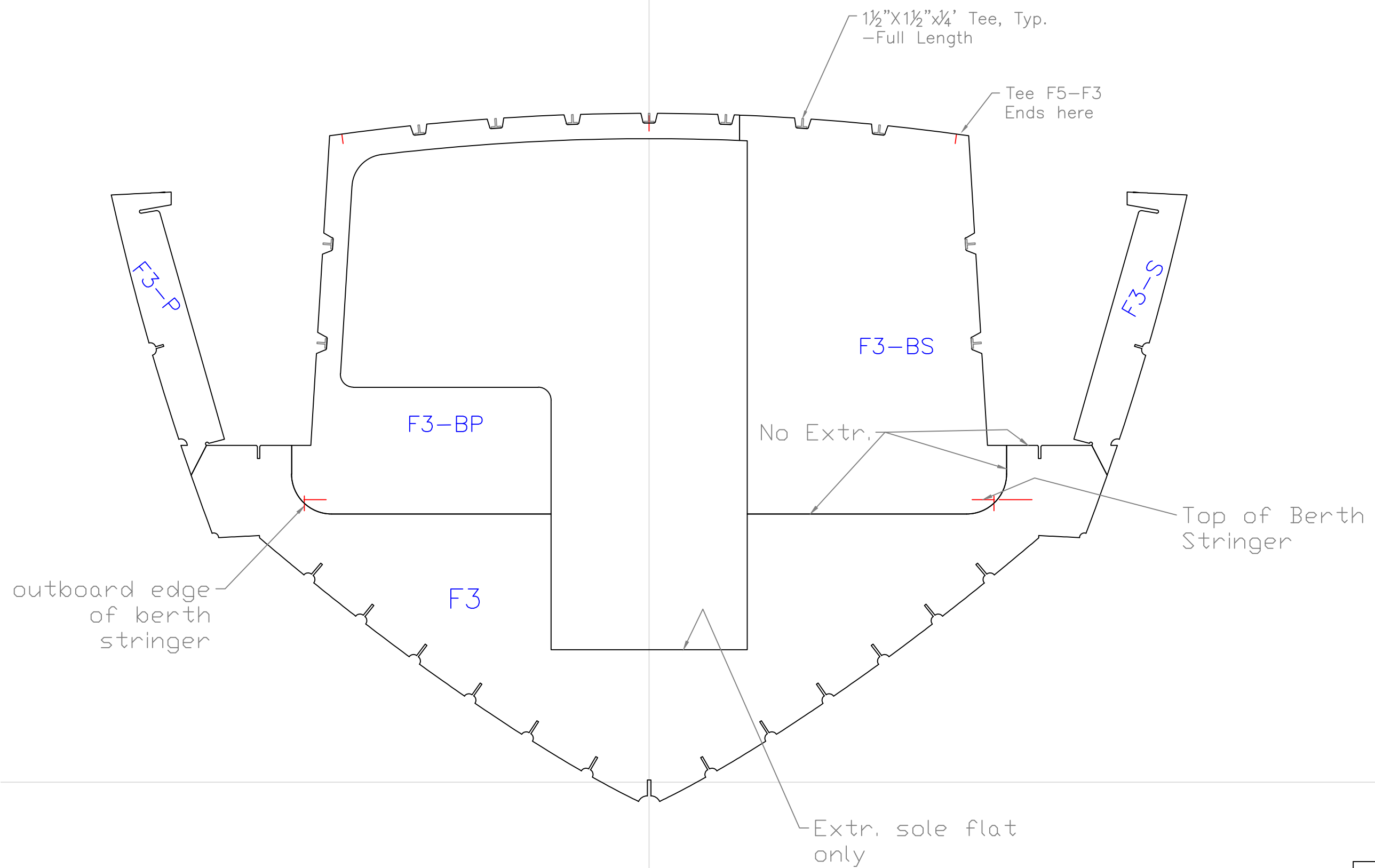
KELLEY- 42' X 14' 6"

For: Doug Kelley

SCALE 3/4" = 1'	DES/DWN WAL	DATE 6/29/05
--------------------	----------------	-----------------

<b>Response Marine, Inc.</b>		SHEET
Newburyport, MA, <a href="http://www.responsemarine.com">www.responsemarine.com</a>	DWG. NO.	239-F-01

REV.	DESCRIPTION



FRAME 3

KELLEY- 42' X 14' 6"

For: Doug Kelley

SCALE 3/4" = 1'	DES/DWN WAL	DATE 6/29/05
--------------------	----------------	-----------------

**Response Marine, Inc.**  
Newburyport, MA www.responsemarine.com

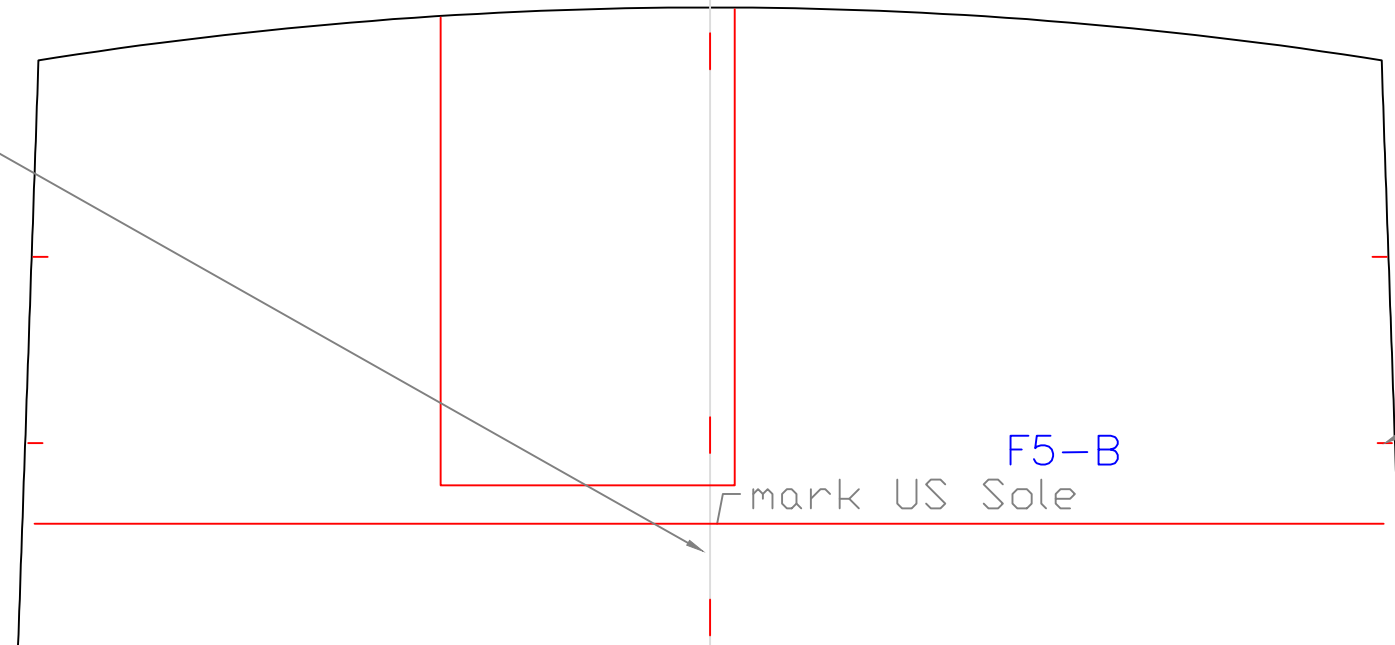
DWG. NO.  
239-F-03

REV.	DESCRIPTION

No I Beam on Sole CL @ F5-6 due to hatch & no stock

No Extr.

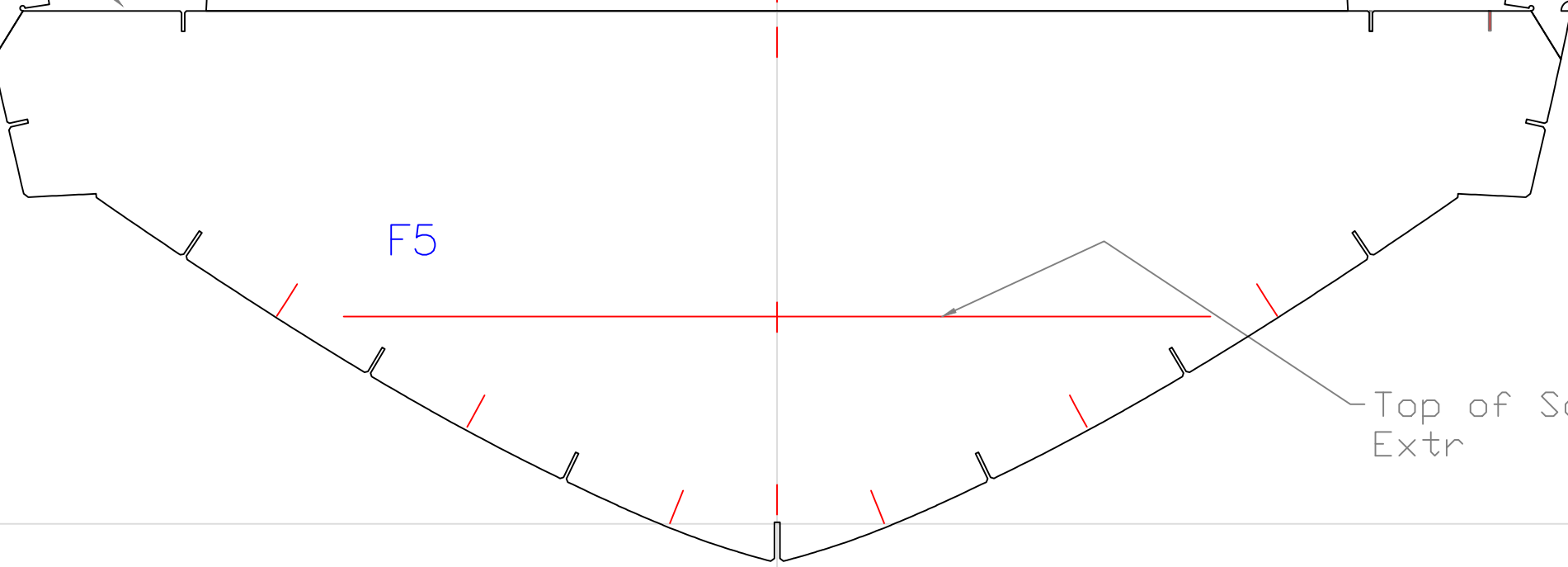
F5-P



F5-B  
mark US Sole

F5-S

Top of Tee's at Side Skin



F5

Top of Sole Extr

WTBHD

FRAME 5

KELLEY- 42' X 14' 6"

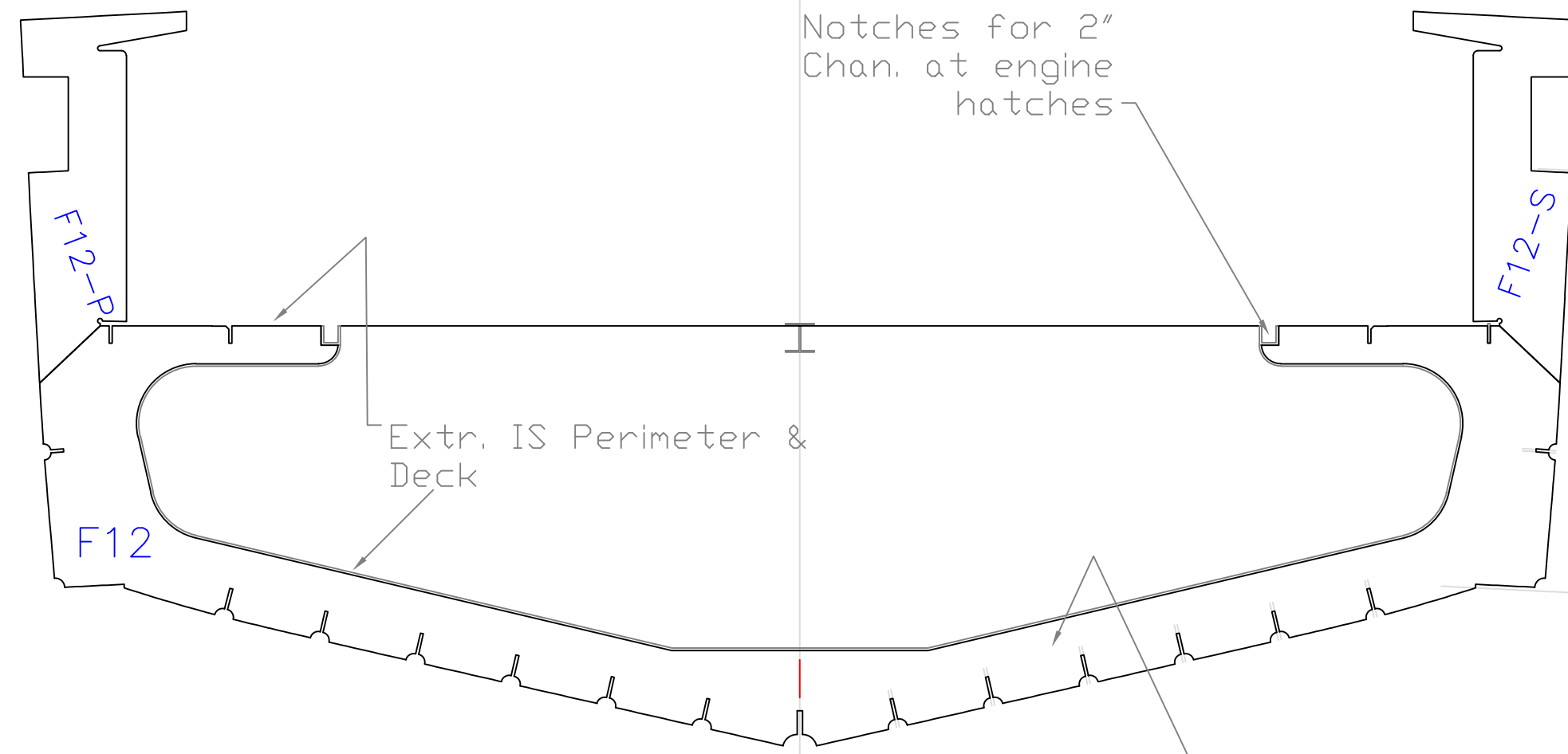
For: Doug Kelley

SCALE 3/4" = 1'	DES/DWN WAL	DATE 6/29/05
--------------------	----------------	-----------------

<b>Response Marine, Inc.</b>		SHEET
------------------------------	--	-------

Newburyport, MA	www.responsemarine.com	DWG. NO. 239-F-05
-----------------	------------------------	----------------------

REV.	DESCRIPTION



Notches for 2"  
Chan. at engine  
hatches

Extr. IS Perimeter &  
Deck

Cut down Frame  
in way of  
Engines

### FRAME 12

KELLEY- 42' X 14' 6"  
For: Doug Kelley

SCALE 3/4" = 1'	DES/DWN WAL	DATE 6/29/05
--------------------	----------------	-----------------

<b>Response Marine, Inc.</b>		SHEET
Newburyport, MA, <a href="http://www.responsemarine.com">www.responsemarine.com</a>	DWG. NO.	239-F-12

REV.	DESCRIPTION